

UCTE



November 2005

Monthly provisional values
union for the co-ordination of transmission of electricity

Table of contents ¹		Page
1	Electricity supply situation of the countries	2
2	Physical energy flows	3
3	Monthly consumption	4
4	Monthly consumption variation	6
5	Consumption of the last 12 months	8
6	Variation of the last 12 months' consumption	9
7	Load flows (night)	10
8	Load flows (day)	11
9	Unavailability of international tie lines (major events)	12
10	Network reliability (major events)	14
11	Scheduled exchanges	15
12	Load on the 3 rd Wednesday	16

¹ Monthly provisional values from the UCTE database as of 24 February 2006

All values are calculated to represent 100% of the national values

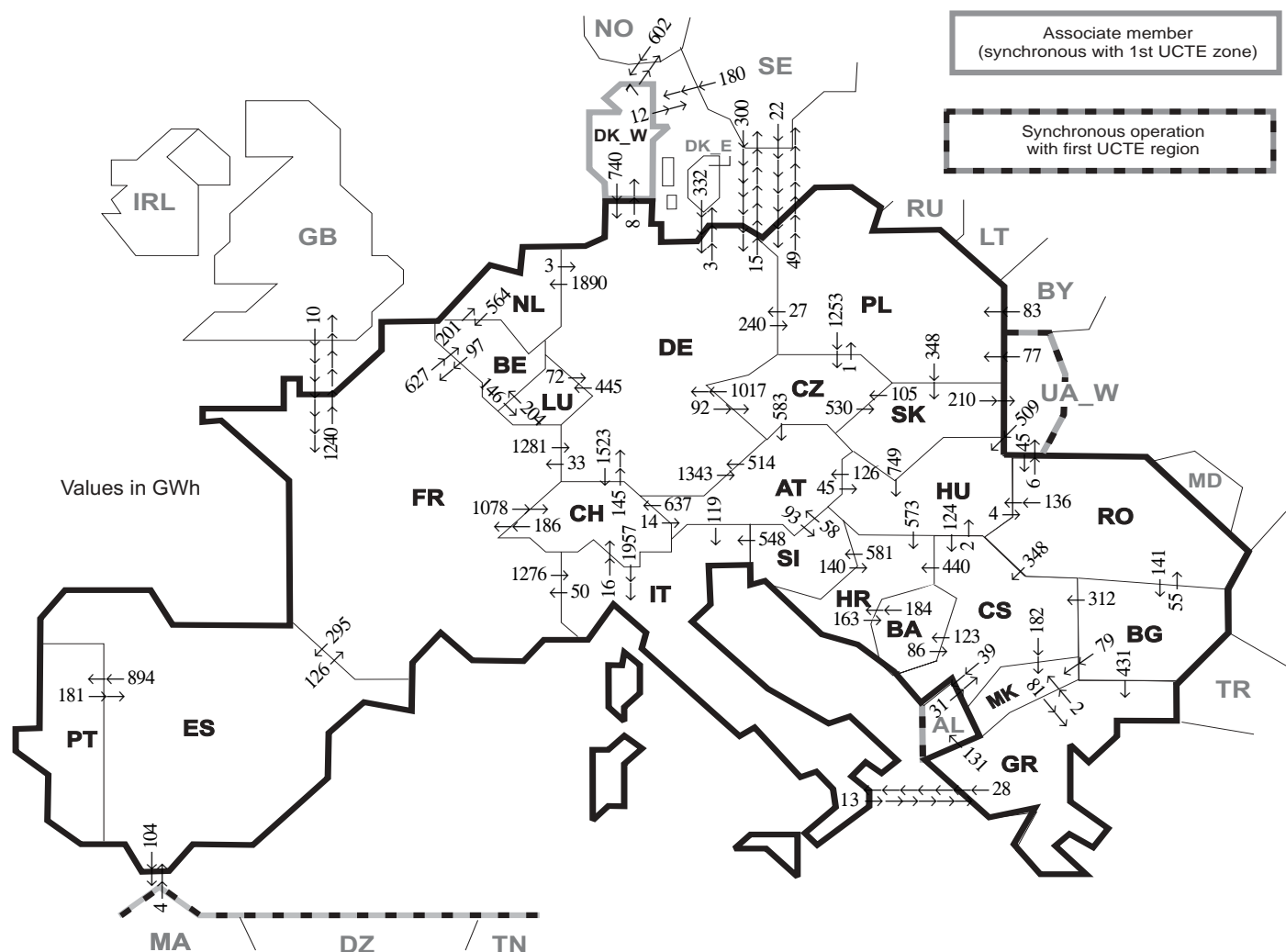
Countries	Net production in GWh							Exchange balance in GWh	Pump in GWh	Consumption in GWh			
	Therm. nuclear	Fossil fuel	Hydro prod	Other renew.	Of which wind	Not identify	Total			monthly	var. [%]	last 12 months	var. [%]
AT	0	2805	2323	0	0	263	5391 ¹	665	251	5805	-2,5	63179	-5,2
BA	0	549	436	0	0	0	985	52	0	1037	8,9	11164	1,4
BE	3543	2930	120	258	16	0	6851 ¹	950	147	7654	-0,4	86848	-1,4
BG	1635	2284	260	0	0	0	4179	-744	49	3386	7,2	35980	1,7
CH	2336	189	2144	80	0	0	4749 ¹	963	176	5536	2,8	62753	4,4
CS	0	2868	983	0	0	0	3851 ¹	114	34	3931	3,2	41617	0,5
CZ	2063	4321	201	5	2	0	6590 ¹	-679	79	5832	3,5	62532	2,1
DE	12749	33481	1546	3218	2302	0	50994 ¹	-1161	770	49063	-0,2	556363	1,1
ES	5208	12866	1731	2188	1907	0	21993 ¹	-701	490	20802	-2,6	247714	-0,9
FR	38395	7175	3862	389	107	0	49821	-5447	600	43774	0,6	480054	1,3
GR	0	3568	402	107	99	0	4077 ¹	364	91	4350	5,1	52758	2,7
HR	0	514	486	2	1	0	1002 ¹	454	10	1446	5,4	16477	3,6
HU	1065	1757	17	0	0	0	2839 ¹	614	0	3453	3,3	38703	1,4
IT	0	21233	2970	600	189	0	24803 ¹	3849	796	27856	0,9	328015	1,2
LU	0	270	75	10	4	0	355	315	101	569	3,1	6202	-2,5
MK	0	493	108	0	0	0	601 ¹	183	0	784	12,8	8013	8,8
NL	324	7456	0	511	188	0	8291 ¹	1524	0	9815	2,0	114210	3,3
PL	0	12937	224	0	0	0	13161 ¹	-1254	195	11712	2,6	130018	-0,8
PT	0	2703	522	374	209	0	3599 ¹	724	60	4263	2,6	49330	4,1
RO	440	3257	1434	0	0	0	5131 ¹	-527	0	4604	0,7	51920	3,1
SI	473	483	207	0	0	0	1163	-30	0	1133	-3,0	12969	-3,1
SK	1545	641	173	1	1	249	2609 ¹	-187	18	2404	3,4	26233	-0,4
UCTE	69776	124780	20224	7743	5025	512	223035¹	41	3867	219209	0,7	2483052	0,9
DK_W	0	1295	2	581	465	0	1878 ¹	31	0	1909	1,1	21240	n.a.
UA_W ²	0	747	5	0	0	0	752 ¹	-338	0	414	-0,7	4384	-0,1

¹ Including deliveries from industry

² UA_W represents the so-called Burshtyn Island synchronously interconnected with UCTE

All representativities of the national production and consumption values used to calculate values at a representativity of 100% as stated in the table above

Countries	AT	BA	BE	BG	CH	CS	CZ	DE	ES	FR	GR	HR	HU	IT	LU	MK	NL	PL	PT	RO	SI	SK	DK_W	UA_W ²
Production																								
Therm.nuclear	100	100	100	100	100	100	100	100	100	100	100	100	100	100	100	100	100	100	100	100	100	100	100	100
Fossil fuel	100	100	100	100	100	100	100	100	100	100	100	100	100	100	98	100	100	100	94	100	100	100	100	100
Hydro prod	100	100	100	100	100	100	100	100	100	100	100	100	100	100	99	100	100	100	100	100	100	100	100	100
Other renew.	100	100	100	100	100	100	100	100	100	100	100	100	100	100	99	100	100	100	100	100	100	100	100	100
Not identify	100	100	100	100	100	100	100	100	100	100	100	100	100	100	100	100	100	100	100	100	100	100	100	100
Consumption	100	100	100	100	100	100	100	100	98	100	100	100	100	100	99	100	100	100	96	100	95	100	100	100



Exporting countries	Importing countries																			Sum export							
	AT	BA	BE	BG	CH	CS	CZ	DE	ES	FR	GR	HR	HU	IT	LU	MK	NL	PL	PT		RO	SI	SK	DK_W	UA_W ²	Other III ¹	
AT	-	-	-	-	637	-	0	514	-	-	-	-	45	119	-	-	-	-	-	-	-	93	-	-	-	-	1408
BA	-	-	-	-	-	86	-	-	-	-	-	184	-	-	-	-	-	-	-	-	-	-	-	-	-	-	270
BE	-	-	-	-	-	-	-	-	97	-	-	-	-	-	146	-	201	-	-	-	-	-	-	-	-	-	444
BG	-	-	-	-	-	312	-	-	-	-	431	-	-	-	-	79	-	-	-	-	55	-	-	-	-	0	877
CH	14	-	-	-	-	-	-	145	-	186	-	-	-	-	-	-	-	-	-	-	-	-	-	-	-	2302	
CS	-	123	-	0	-	-	-	-	-	-	-	440	2	-	-	182	-	-	-	0	-	-	-	-	-	39	786
CZ	583	-	-	-	-	-	-	-	1017	-	-	-	-	-	-	-	-	1	-	-	-	530	-	-	-	-	2131
DE	1343	-	-	-	1523	-	92	-	-	33	-	-	-	-	445	-	1890	240	-	-	-	-	8	-	-	18	5592
ES	-	-	-	-	-	-	-	-	-	126	-	-	-	-	-	-	-	-	894	-	-	-	-	-	-	104	1124
FR	-	-	627	-	1078	-	-	1281	295	-	-	-	-	1276	-	-	-	-	-	-	-	-	-	-	-	1240	5797
GR	-	-	-	0	-	-	-	-	-	-	-	-	-	28	-	2	-	-	-	-	-	-	-	-	-	131	161
HR	-	163	-	-	-	0	-	-	-	-	-	-	0	-	-	-	-	-	-	-	581	-	-	-	-	-	744
HU	126	-	-	-	-	124	-	-	-	-	-	573	-	-	-	-	-	-	-	-	4	0	-	0	-	-	827
IT	0	-	-	-	16	-	-	-	-	50	13	-	-	-	-	-	-	-	-	-	0	-	-	-	-	-	79
LU	-	-	204	-	-	-	-	72	-	-	-	-	-	-	-	-	-	-	-	-	-	-	-	-	-	-	276
MK	-	-	-	0	-	0	-	-	-	-	-	81	-	-	-	-	-	-	-	-	-	-	-	-	-	-	81
NL	-	-	564	-	-	-	-	3	-	-	-	-	-	-	-	-	-	-	-	-	-	-	-	-	-	-	567
PL	-	-	-	-	-	-	-	-	-	-	-	-	-	-	-	-	-	-	-	-	-	-	-	0	49	1677	
PT	-	-	-	-	-	-	-	-	181	-	-	-	-	-	-	-	-	-	-	-	-	-	-	-	-	-	181
RO	-	-	-	141	-	348	-	-	-	-	-	-	136	-	-	-	-	-	-	-	-	-	-	6	0	631	
SI	58	-	-	-	-	-	-	-	-	-	-	140	548	-	-	-	-	-	-	-	-	-	-	-	-	-	746
SK	-	-	-	-	-	-	-	-	-	-	-	-	-	-	-	-	-	-	0	-	-	-	-	-	210	1064	
DK_W	-	-	-	-	-	-	-	740	-	-	-	-	-	-	-	-	-	-	-	-	-	-	-	-	-	19	759
UA_W ²	-	-	-	-	-	-	-	-	-	-	-	509	-	-	-	-	-	77	-	45	0	-	-	-	-	-	631
Other III ¹	-	-	-	0	31	-	632	4	10	0	-	-	-	-	-	-	-	105	-	0	-	-	782	-	-	1564	
Sum imp	2124	286	1395	141	3254	901	1450	4431	480	502	525	1337	1441	3928	591	263	2091	423	894	104	674	878	790	216	1600	30719	

Sum of physical energy flows between UCTE countries = 25960GWh

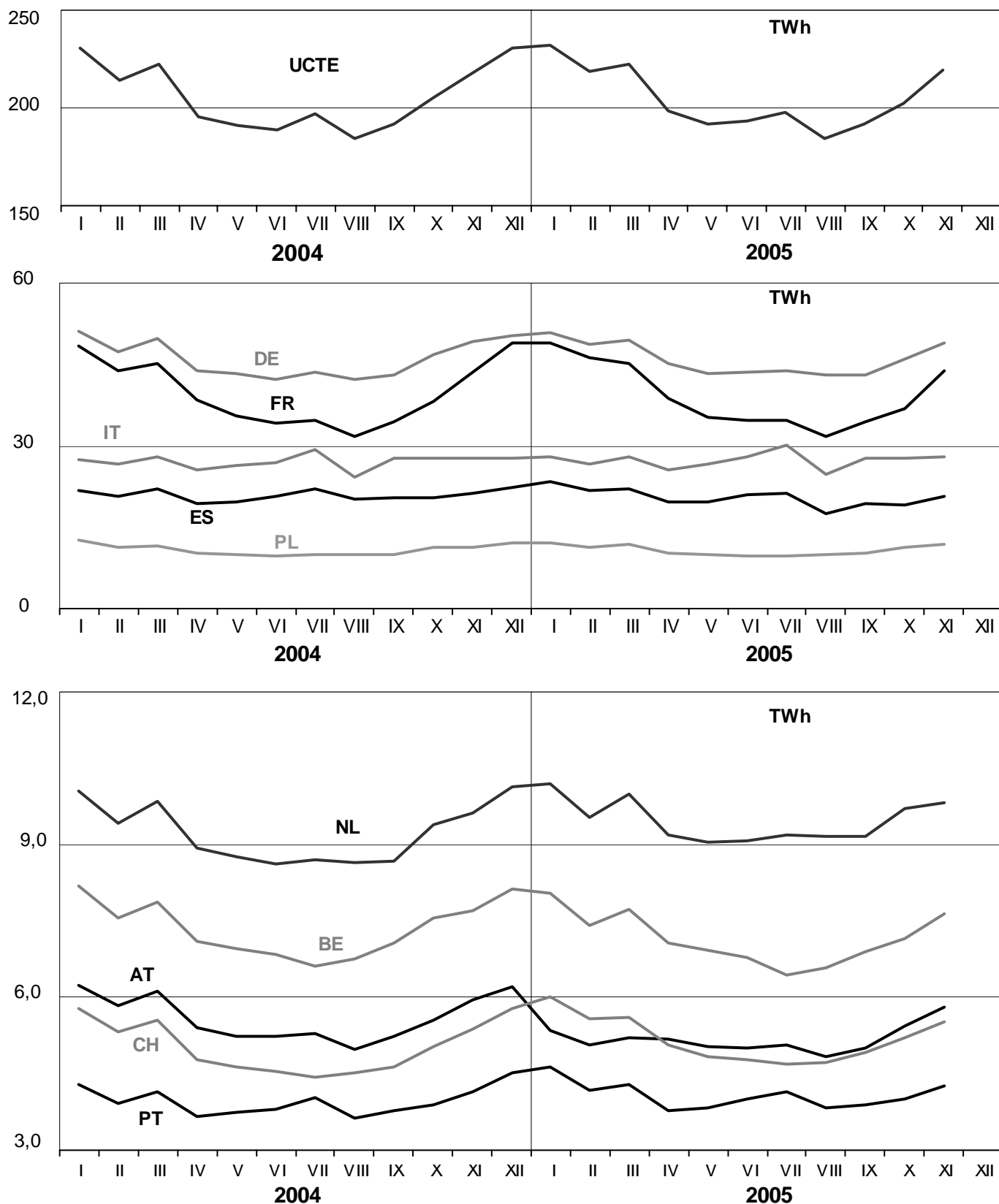
Total physical energy flows = 30719GWh

¹ Other III: Albania, Belarus, Denmark East, Great Britain, Morocco, Republic of Moldavia, Norway, Sweden and Republic of Turkey

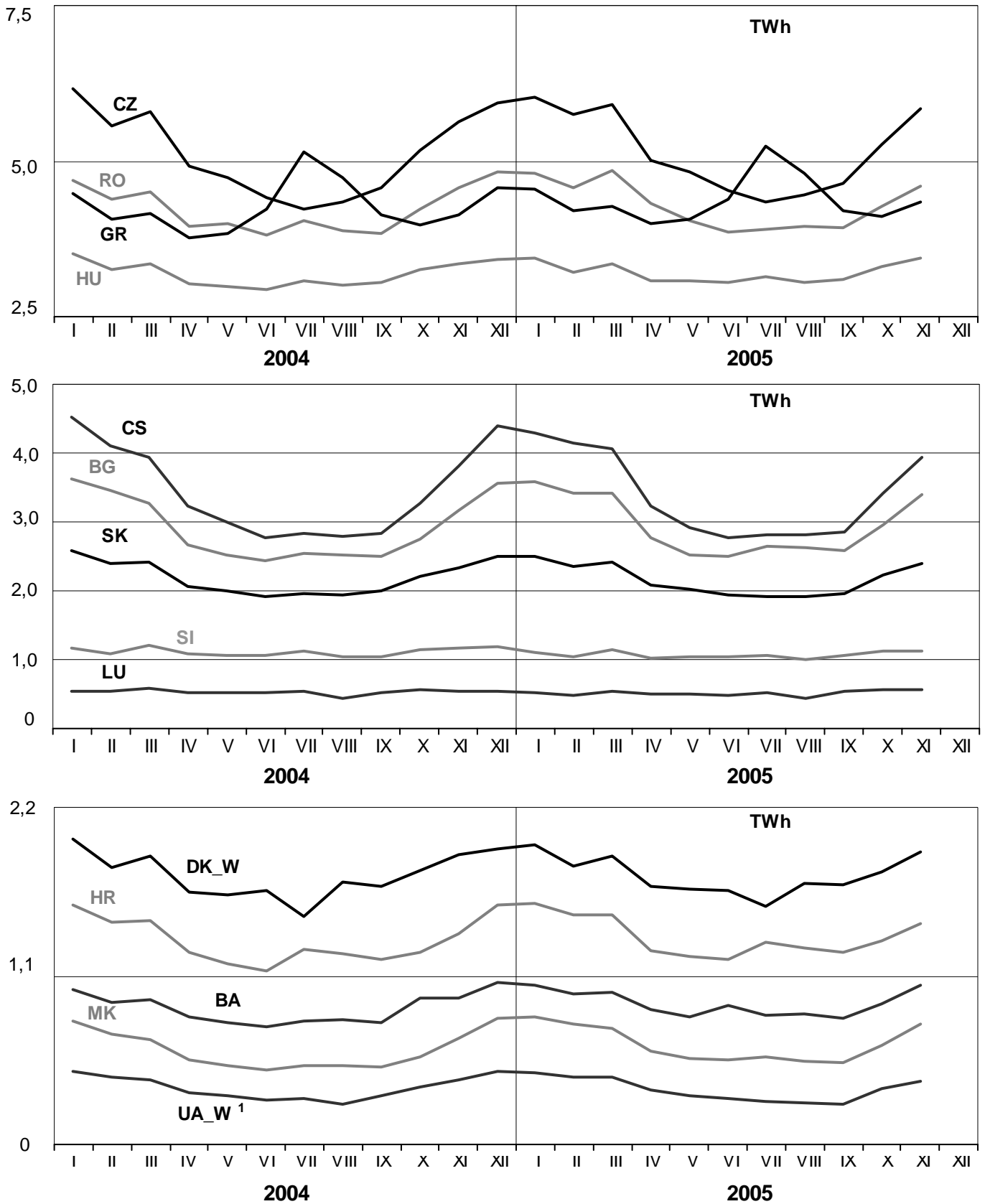
² UA_W represents the so-called Burshtyn Island synchronously interconnected with UCTE

These physical energy flows were measured on the cross-frontier transmission lines (≤ 110 kV) listed in table 9 of the Statistical Yearbook. These values may differ from the official statistics and the exchange balances in chapter 1.

All values are calculated to represent 100% of the national values



All values are calculated to represent 100% of the national values

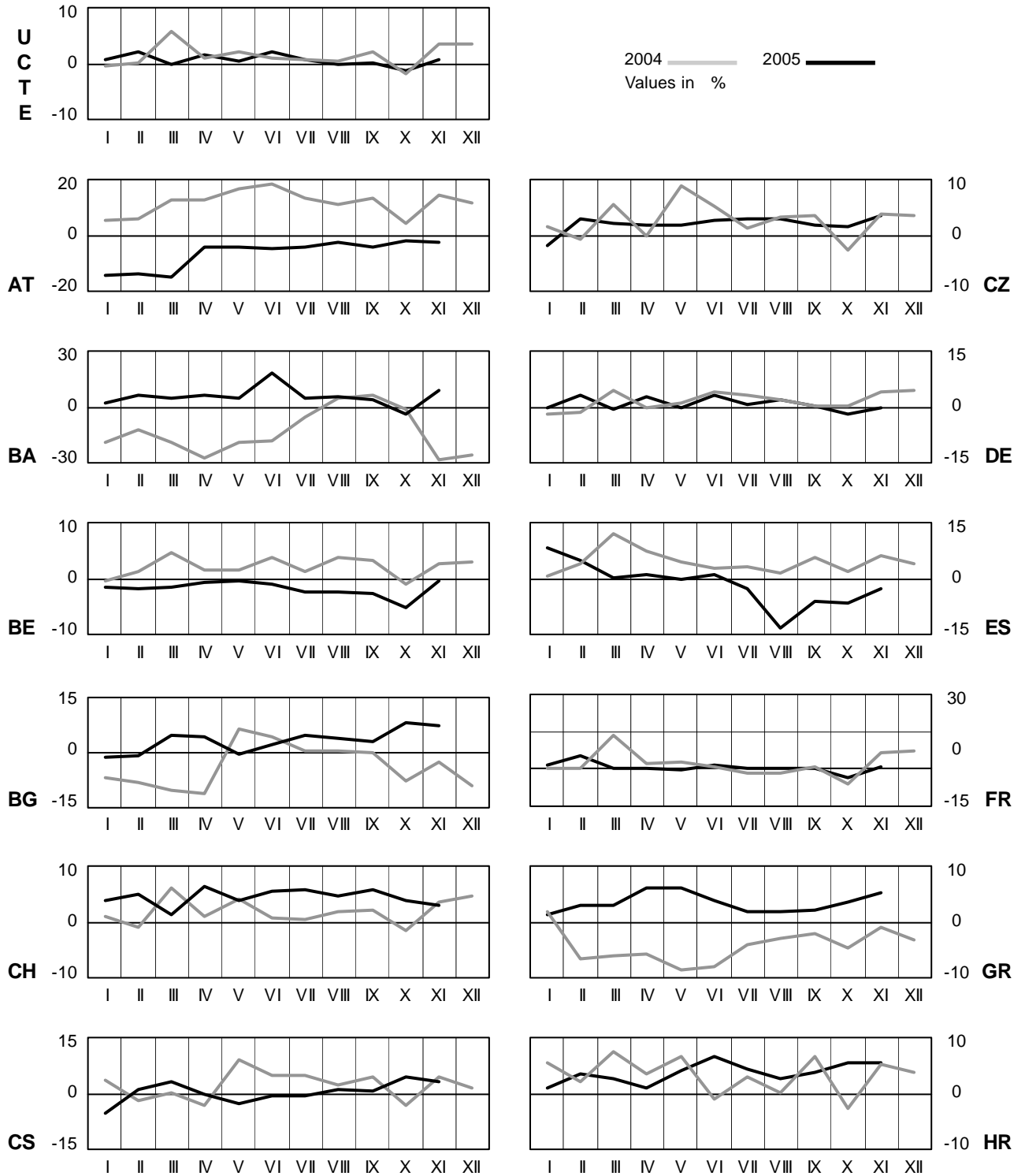


¹ UA_W represents the so-called Burshtyn Island synchronously interconnected with UCTE

4 Monthly consumption variation

November 2005

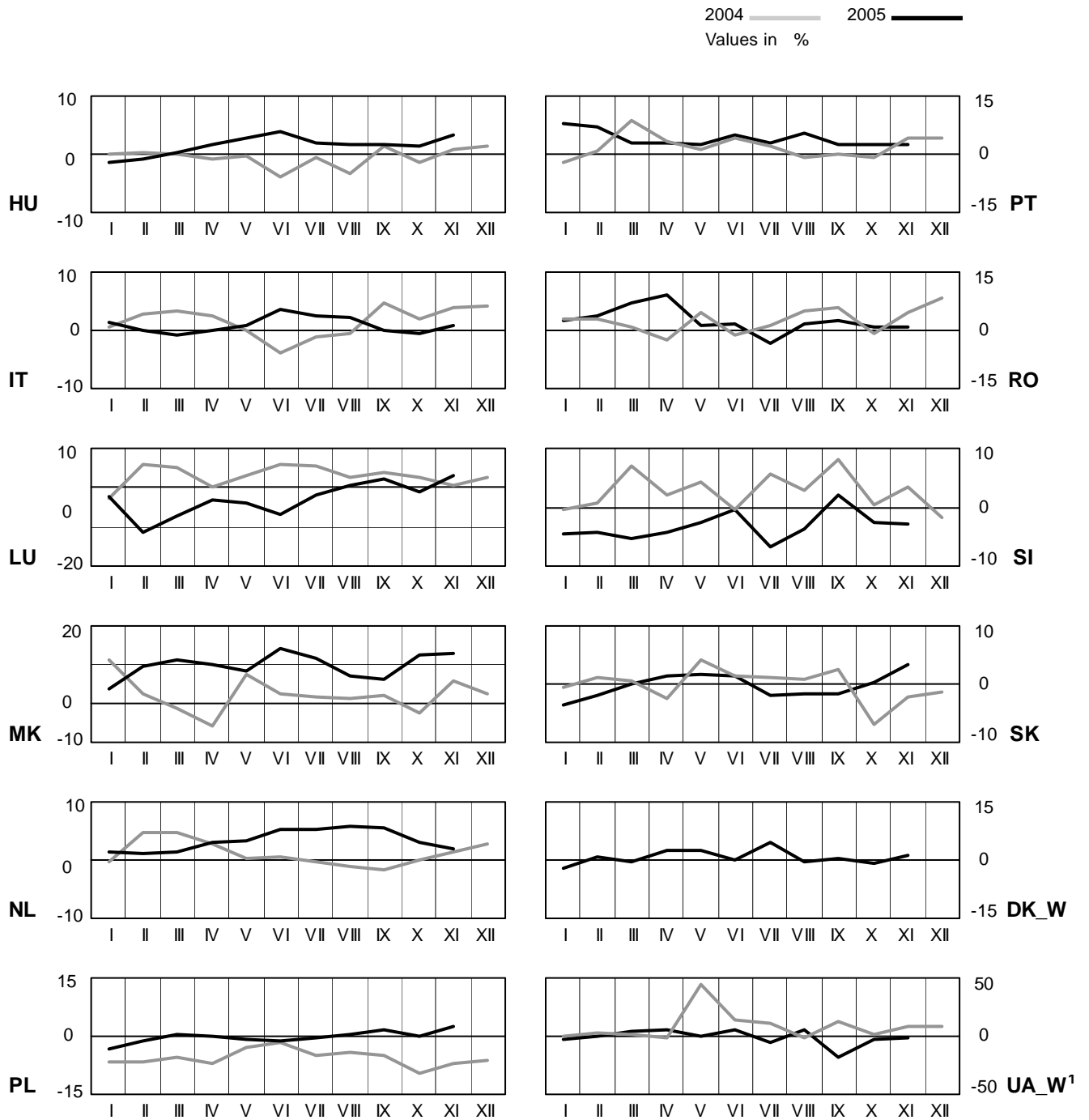
All values are calculated to represent 100% of the national values



4 Monthly consumption variation

November 2005

All values are calculated to represent 100% of the national values



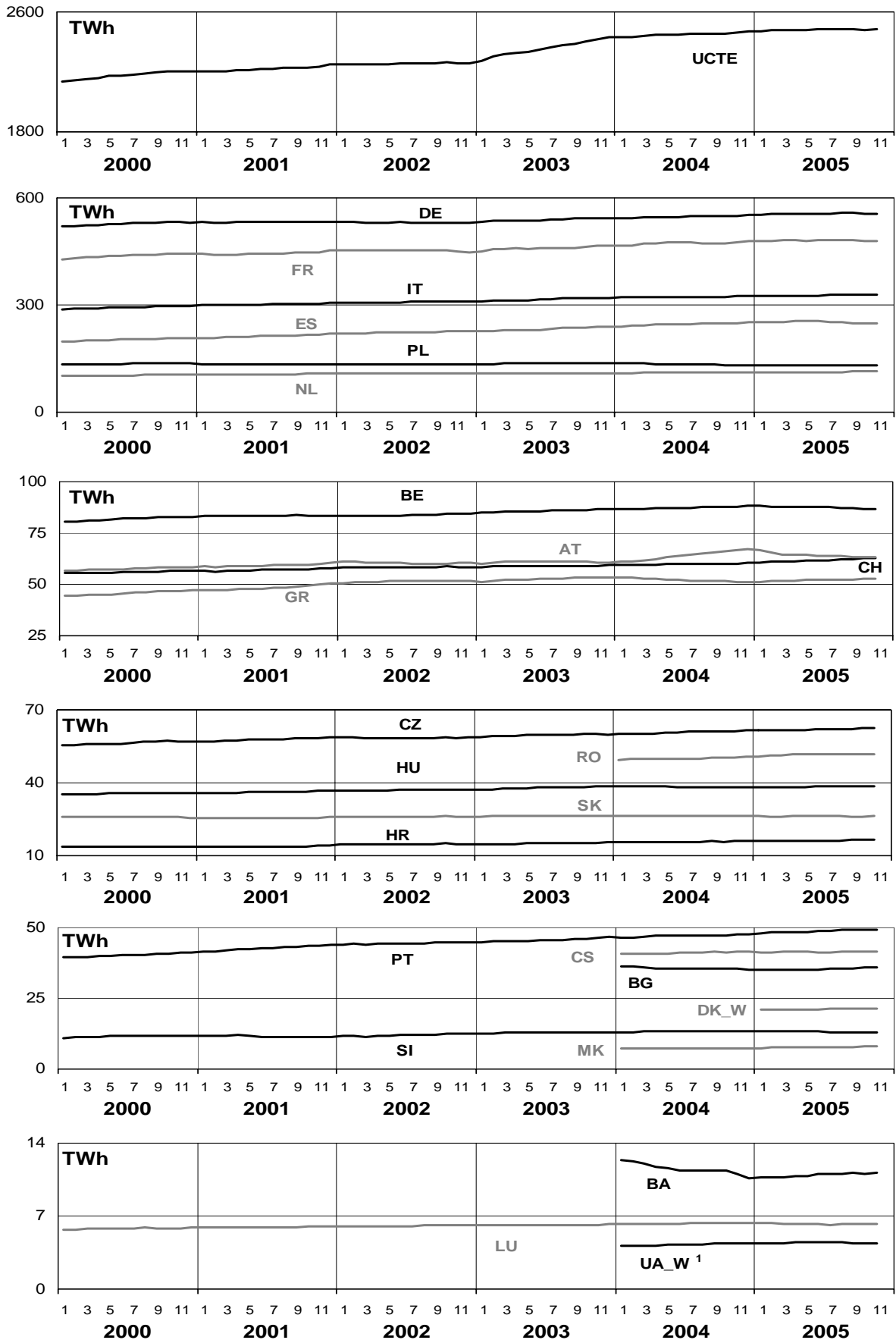
¹ UA_W represents the so-called Burshtyn Island synchronously interconnected with UCTE

5

Consumption of the last 12 months

November 2005

All values are calculated to represent 100% of the national values



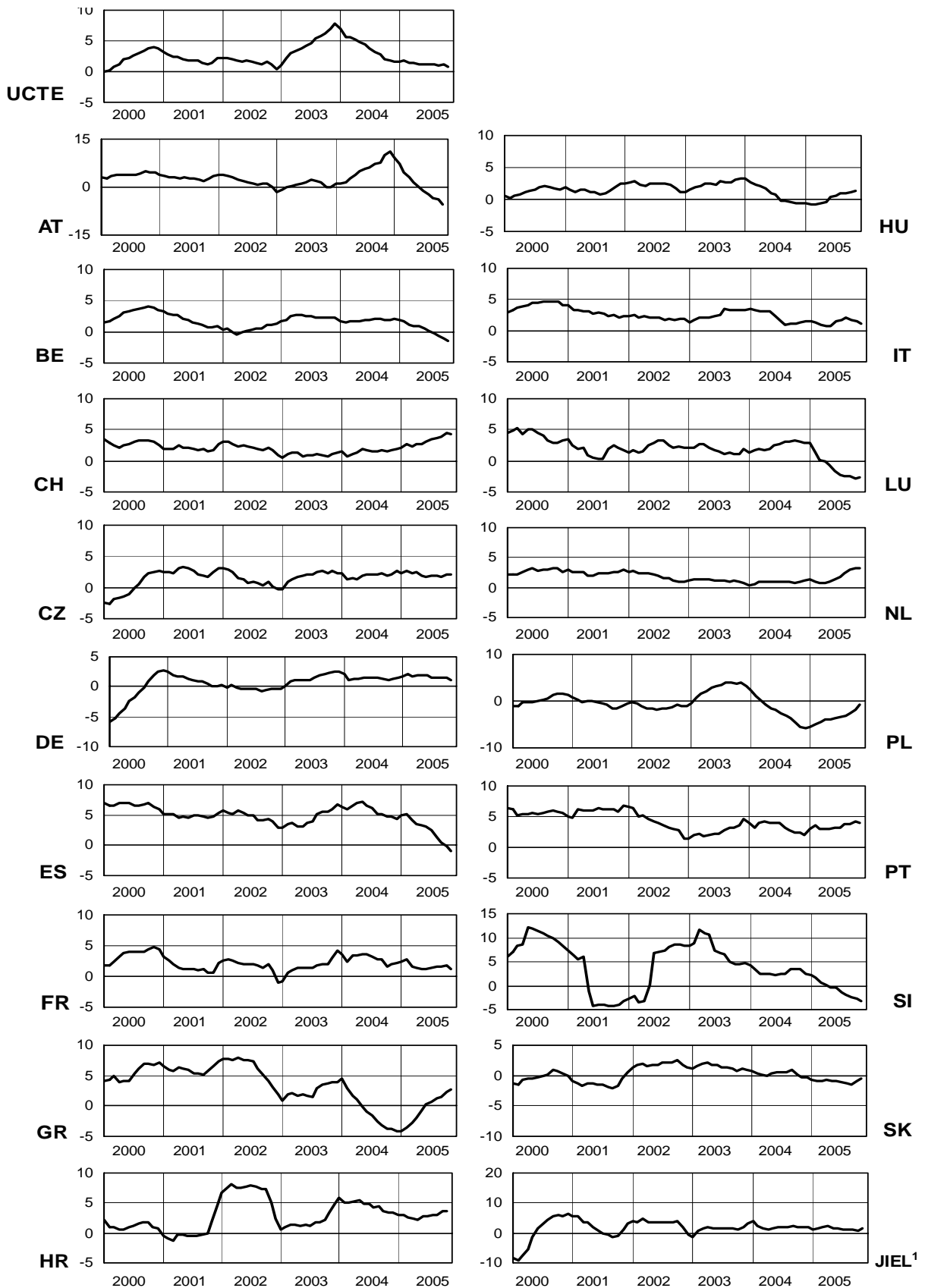
¹ UA_W represents the so-called Burshtyn Island synchronously interconnected with UCTE

6

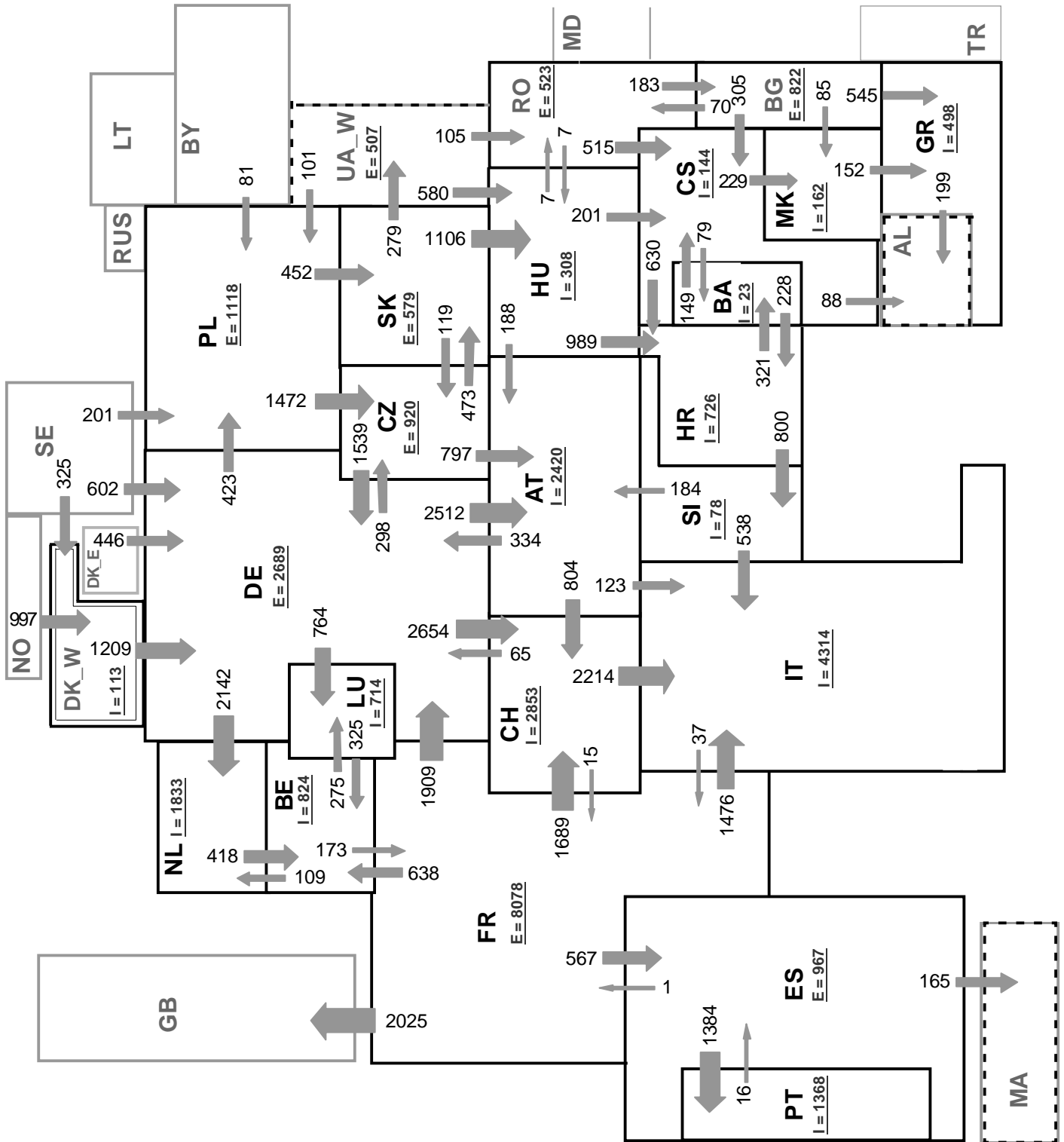
Variation of the last 12 months' consumption in %

November 2005

All values are calculated to represent 100% of the national values



¹ JIEL = FRY + FYROM (Federal Republic of Yugoslavia and former Yugoslav Republic of Macedonia)



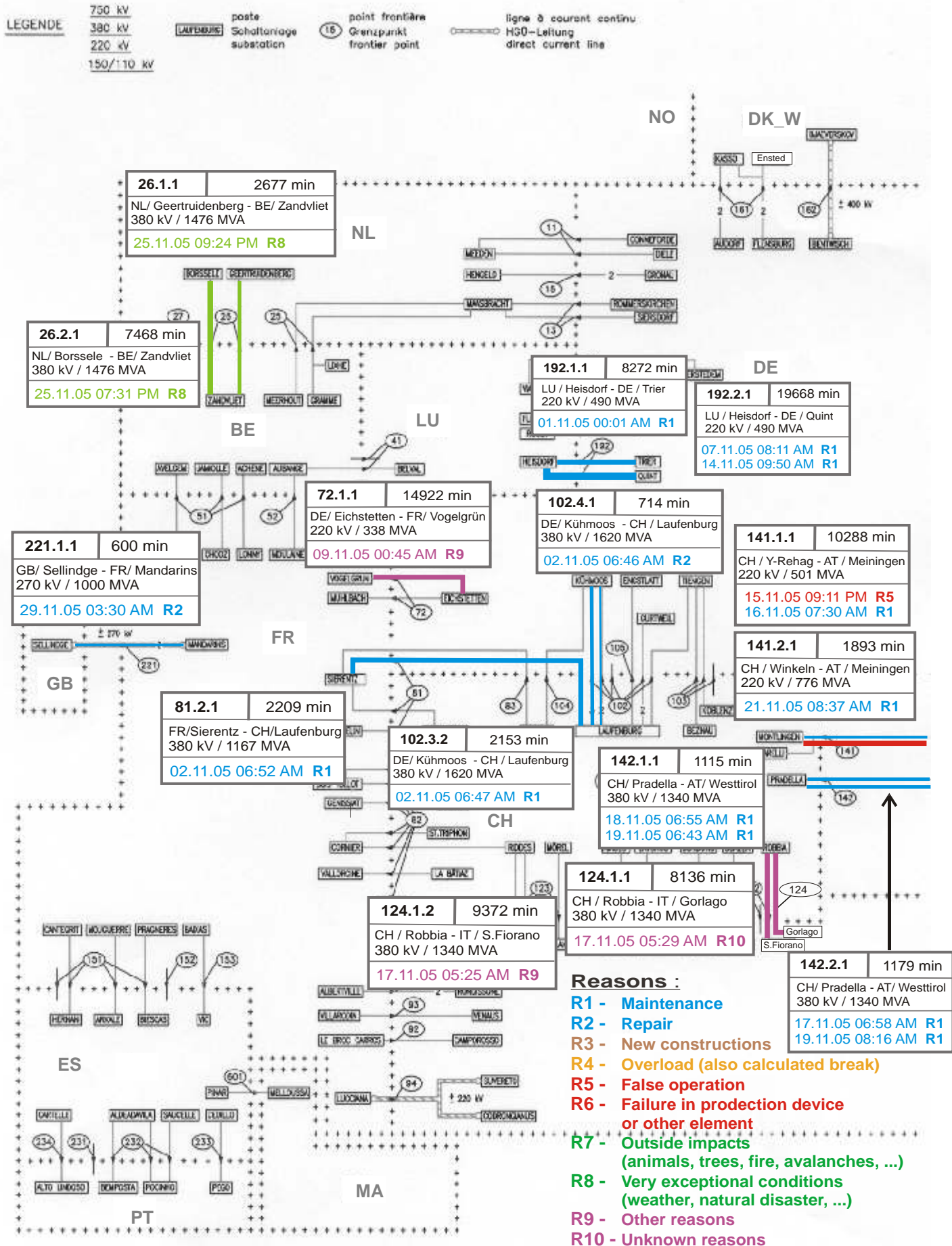
Associate member

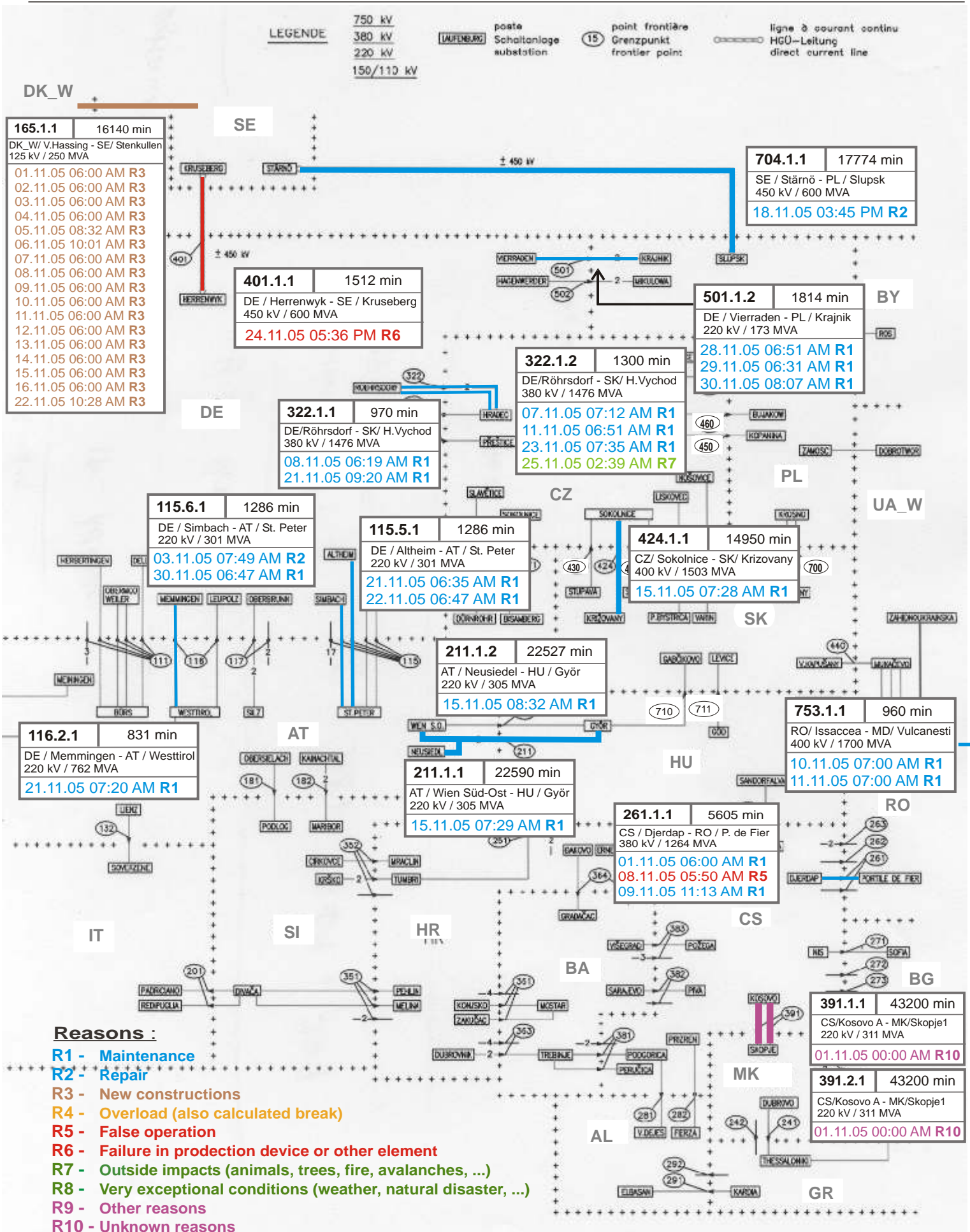
Synchronous operation with first region

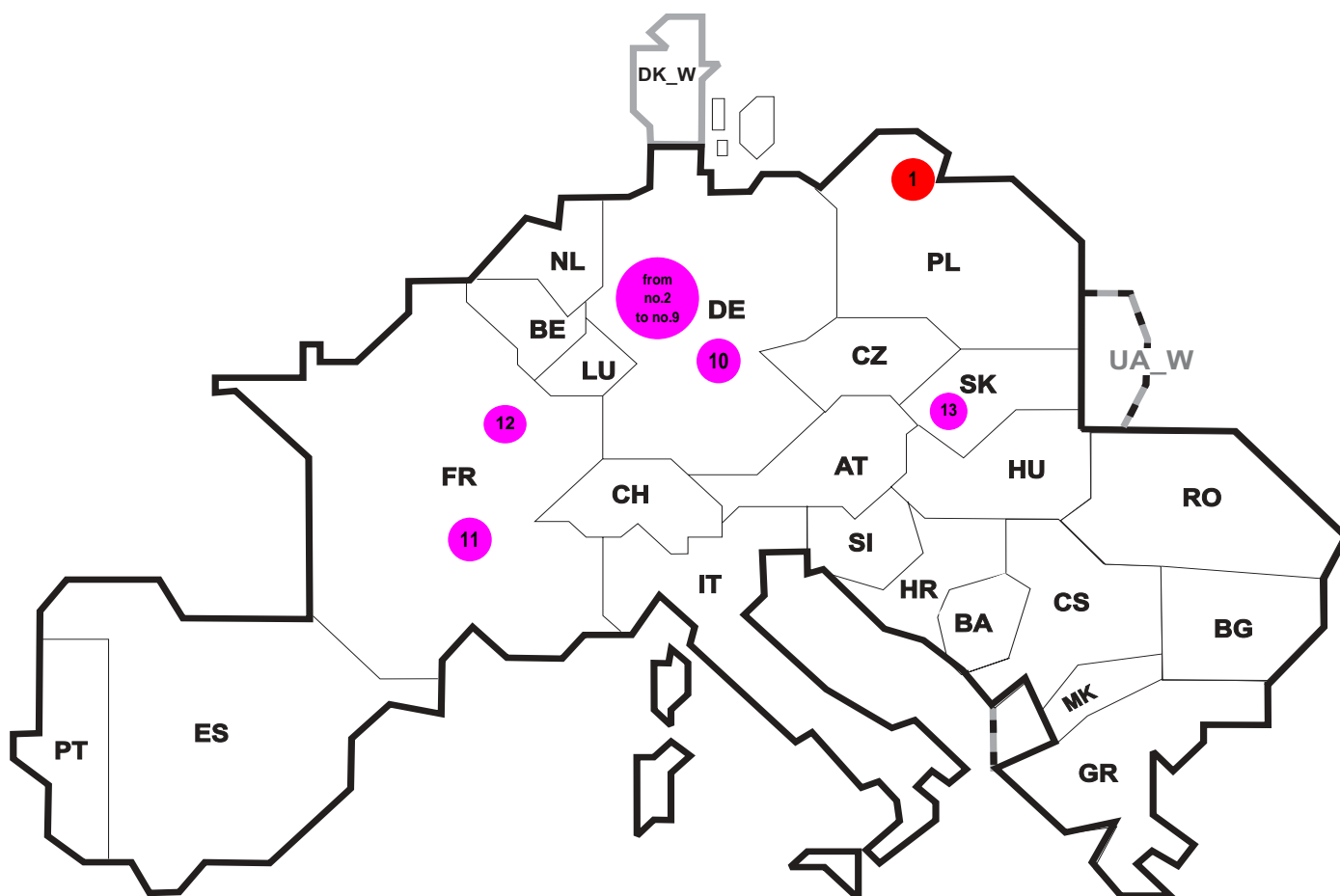
Sum of load flows in MW:

UCTE = 33728 MW Total = 41131 MW

* Central European Time (CET)
I = Import balance
E = Export balance







Reasons:

R4 Overload (also calculated break)

R5 False operation

R6 Failure in protection device or other element

R7 Outside impacts (animals, trees, fire, avalanches, ...)
(animals, trees, fire, avalanches, ...)

R8 Very exceptional conditions
(weather, natural disaster, ...)

R9 Other reasons

R10 Unknown reasons

No	Country	Substation	Reason	Energy not supplied [MWh]	Total loss of power [MW]	Restoration time [min]	Equivalent time of interruption ¹
1	PL	Slupsk	R6	168000	200	50432	679,14
2	DE	Ibbenbüren	R9	9505	705	809	8,98
3	DE	Walsum	R9	702	1080	117	0,66
4	DE	Hesseln	R9	18	220	10	0,02
5	DE	Luestringen	R9	42	500	30	0,04
6	DE	Voerde	R9	216	1290	20	0,20
7	DE	Wehrendorf	R9	25	310	15	0,02
8	DE	Westerkappeln	R9	26	300	10	0,02
9	DE	St.Huelfe	R9	12	140	0	0,01
10	DE	Remptendorf	R9	5564	1435	2676	5,26
11	FR	Cusset Poste	R9	155	87	107	0,17
12	FR	Vénissieux	R9	36	30	71	0,04
13	SK	Krizovany	R10	20	150	8	0,40

¹ (year [in min] * energy not supply) / consumption last 12 months

Control area	Export Programs	Import Programs	Export Programs at 03:00	Import Programs at 03:00	Export Programs at 11:00	Import Programs at 11:00
AT	702462	1137207	1984	619	788	1485
BA	98379	29124	129	0	136	25
BE	546095	1439001	993	1772	983	2175
BG	n.a.	n.a.	n.a.	n.a.	n.a.	n.a.
CH	2005380	2969523	1951	4842	3855	3140
CS	629081	745353	561	656	741	1053
CZ	1594638	874940	2077	1191	2312	1323
DE	4064048	2101648	5379	1977	4285	3741
ES	1046069	345323	1599	589	1702	306
FR	7648123	2368562	10282	2271	11106	2962
GR	30418	398110	0	487	0	502
HR	147496	609831	214	964	49	656
HU	452286	1067629	856	1178	565	1789
IT	78930	3928407	37	4351	47	6970
MK	3900	188000	185	339	40	349
NL	463301	1980670	563	2404	35	2864
PL	1360683	116052	1569	460	2177	216
PT	22936	746555	0	1385	0	1286
RO	700376	179684	775	288	1335	219
SI	625142	613604	791	831	894	755
SK	694125	453575	1008	395	980	782
DK_W	719734	779582	1185	1460	1192	1340
UA_W ¹	336870	240	410	10	502	10

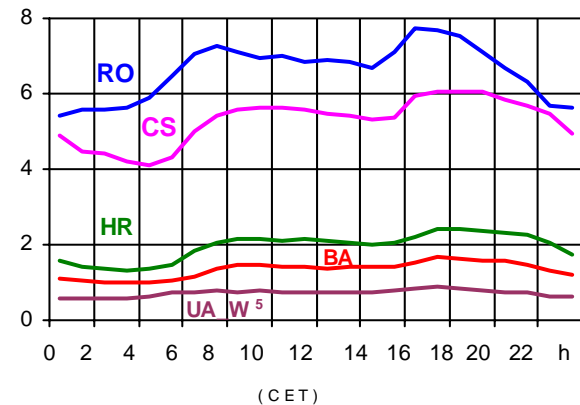
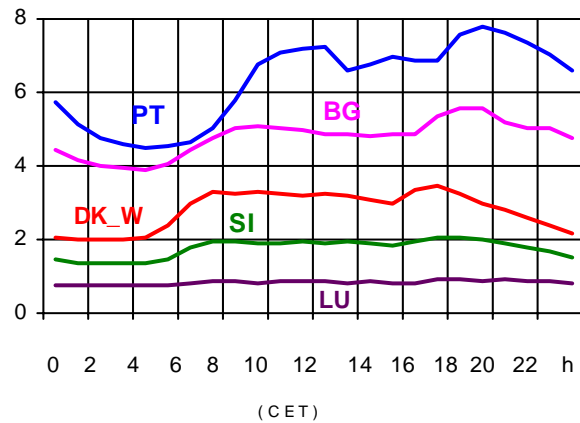
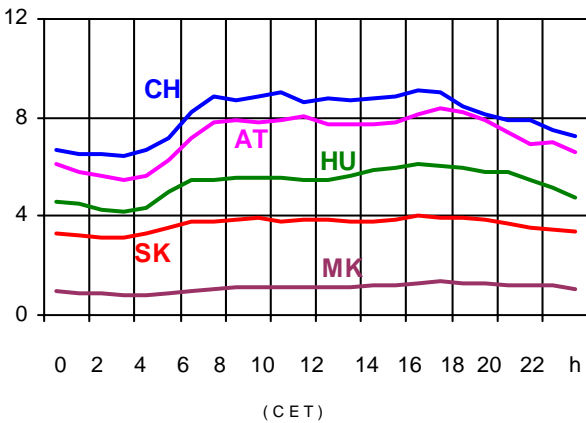
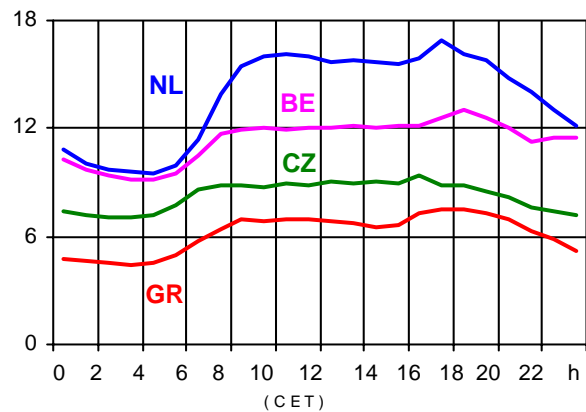
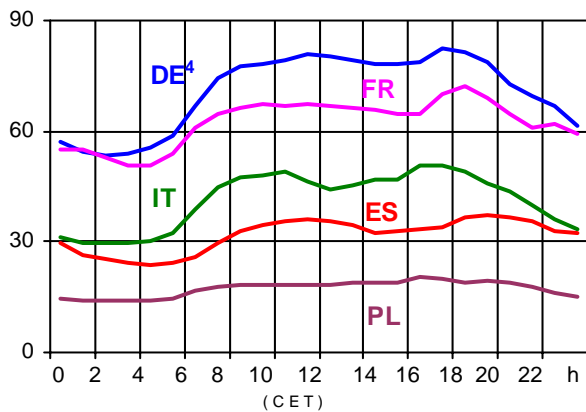
- Control areas can differ from national borders (i.e. German block which includes parts of AT, LU and DK).
- Values are calculated on an hourly base (MWh).
- This values are not the provisional values entered in the VULCANUS system, but the definitive values after an eventual correction during the actual date.
- Export Programs: Sum of all positive values of every hour of every border
- Import Programs: Sum of all negative values of every hour of every border
- Export Programs at 03:00: Sum of all positive values the third Wednesday from 02:00 to 03:00 a.m.
- Import Programs at 03:00: Sum of all negative values the third Wednesday from 02:00 to 03:00 a.m.
- Export Programs at 11:00: Sum of all positive values the third Wednesday from 10:00 to 11:00 a.m.
- Import Programs at 11:00: Sum of all negative values the third Wednesday from 10:00 to 11:00 a.m.

¹ UA_W represents the so-called Burshtyn Island synchronously interconnected with UCTE

All values are calculated to represent 100% of the national values

Consumption hourly load curves¹ on 16.11.2005

Values in GW



	Peak load MW	var.% ²	Load representativity ¹ %	Parallel power ³ MW
AT	8408	-19,2	100	9175
BA	1676	-2,4	100	1452
BE	12990	3,9	100	10711
BG	5590	3,7	100	6044
CH	9096	0,1	100	9910
CS	6058	-7,3	100	5473
CZ	9343	12,7	100	10662
DE ⁴	82527	2,3	91	79500
ES	37109	-4,9	98	36205
FR	72087	-1,5	100	75426
GR	7502	4,6	100	6440
HR	2443	3,4	100	1903
HU	6097	0,6	100	4232
IT	50571	0,1	100	42648
LU	942	-2,1	99	839
MK	1330	9,7	100	n.a.
NL	16858	9,7	100	13290
PL	20218	1,5	100	20714
PT	7786	-1,2	96	5543
RO	7731	0,8	100	7023
SI	2068	0,9	95	1913
SK	4033	0,7	100	3949
UCTE	365048	0,7		353052
DK_W	3445	1,2	100	3219
UA_W ⁵	874	-4,8	100	1247

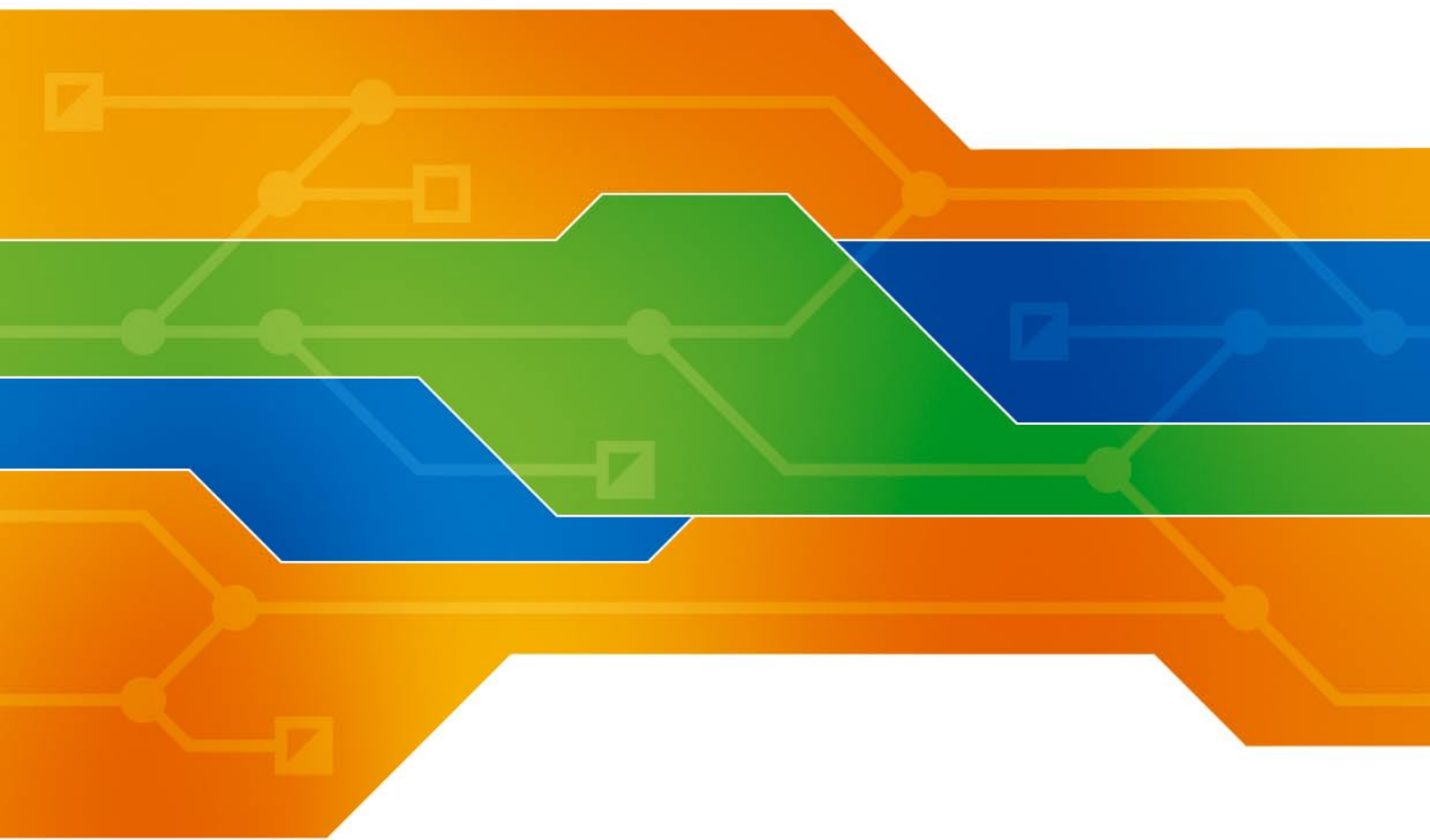
¹ Percentage as referred to total values in %

² Variation as compared to corresponding month of the previous year

³ Power produced in parallel operation (including autoproduction)

⁴ Values estimated on the basis of the vertical load. The vertical load is the total amount of the power flows out of the transmission network into distribution and large consumer networks.

⁵ UA_W represents the so-called Burshtyn Island synchronously interconnected with UCTE



Contact

Boulevard Saint-Michel, 15
B-1040 Brussels - Belgium
Tel +32 2 741 69 40 - Fax +32 2 741 69 49

info@ucte.org
www.ucte.org