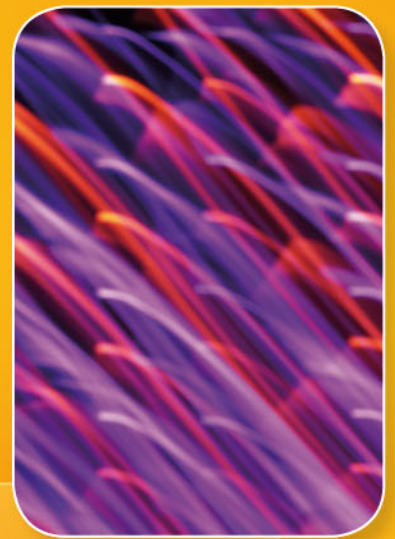


# UCTE



## October 2007

Monthly provisional values  
union for the co-ordination of transmission of electricity

<b>Table of contents</b>		Page
1	Electricity supply situation of the countries	2
2	Physical energy flows	3
3	Monthly consumption	4
4	Monthly consumption variation	6
5	Consumption of the last 12 months	8
6	Variation of the last 12 months' consumption	10
7	Load flows (night)	12
8	Load flows (day)	13
9	Unavailability of international tie lines ( major events )	14
10	Network reliability ( major events )	16
11	Scheduled exchanges	17
12	Load on the 3 <sup>rd</sup> Wednesday	18

#### **General remarks and abbreviations used in the tables**

- All values of production and consumption in chapter 1, 3&4, 5&6 and 12 are calculated to represent 100% of the national values.
- DK\_W Denmark West represents the Western part of Denmark synchronously interconnected with UCTE (Jutland and Funen).
- UA\_W Ukraine West represents the so-called Burshtyn Island synchronously interconnected with UCTE.
- CET Central European Time
- The Bulgarian values of production and consumption are gross values.

Countries	Net production in GWh							Exchange balance in GWh	Pump in GWh	Consumption in GWh			
	Therm. nuclear	Therm. conv.	Hydro prod	Other renew.	Of which wind	Not identify	Total			monthly	var. [%]	last 12 months	var. [%]
AT	0	2502	2875	0	0	618	5995 <sup>1</sup>	122	252	5865	5,5	66909	0,3
BA	0	768	290	0	0	0	1058	-73	0	985	8,6	11073	-1,1
BE <sup>2</sup>	3847	2787	125	278	22	0	7037 <sup>1</sup>	835	149	7723	2,3	88889	-1,4
BG	727	2325	229	0	0	0	3281	-464	49	2768	4,8	32777	-9,8
CH	2398	176	2911	87	1	0	5572 <sup>1</sup>	-37	135	5400	5,0	62487	-1,7
CZ	2343	4541	163	24	8	0	7071 <sup>1</sup>	-1408	30	5633	5,8	63947	-1,0
DE	10565	32748	1897	3423	1596	0	48633 <sup>1</sup>	-1098	807	46728	1,6	557537	-0,8
ES	4905	13579	2193	2504	1835	0	23181 <sup>1</sup>	-1140	291	21751	4,6	263860	1,5
FR	36895	4156	3923	537	272	0	45511 <sup>1</sup>	-3931	783	40797	12,4	473066	-2,2
GR	0	3898	179	130	110	0	4207 <sup>1</sup>	278	105	4380	4,9	55494	3,0
HR	0	745	312	4	4	0	1061 <sup>1</sup>	420	15	1466	10,7	17102	1,3
HU <sup>3</sup>	1331	2025	0	0	0	0	3356 <sup>1</sup>	203	0	3559	3,8	41138	1,4
IT	0	22228	2800	776	333	0	25804 <sup>1</sup>	3845	620	29029	1,7	338029	0,2
LU	0	254	69	10	3	0	333	359	94	598	3,3	6745	2,1
ME	0	111	62	0	0	0	173	195	0	368	n.a.	3770	n.a.
MK	0	446	60	0	0	0	506 <sup>1</sup>	204	0	710	10,4	8290	-1,4
NL	356	8284	0	529	145	0	9169 <sup>1</sup>	826	0	9995	1,1	116687	0,6
PL	0	13311	232	44	31	0	13587 <sup>1</sup>	-821	110	12656	8,9	140721	3,3
PT	0	2302	647	450	267	0	3399 <sup>1</sup>	887	62	4224	2,4	51218	0,8
RO	766	2684	1417	0	0	0	4867 <sup>1</sup>	-206	15	4646	5,1	53652	1,5
RS	0	2656	708	0	0	0	3364	257	144	3477	n.a.	31832	n.a.
SI	80	430	267	0	0	0	777	373	0	1150	1,0	13434	2,3
SK	966	707	342	28	0	0	2043 <sup>1</sup>	373	19	2397	6,4	27360	0,4
DK_W	0	1621	2	402	257	0	2025 <sup>1</sup>	-136	0	1889	2,9	21732	-0,1
<b>UCTE<sup>4</sup></b>	<b>65179</b>	<b>125284</b>	<b>21703</b>	<b>9226</b>	<b>4884</b>	<b>618</b>	<b>222010<sup>1</sup></b>	<b>-137</b>	<b>3680</b>	<b>218194</b>	<b>6,1</b>	<b>2555918</b>	<b>0,6</b>
UA_W	0	688	10	0	0	0	698 <sup>1</sup>	-328	0	370	9,1	4203	-4,3

<sup>1</sup> Including deliveries from industry

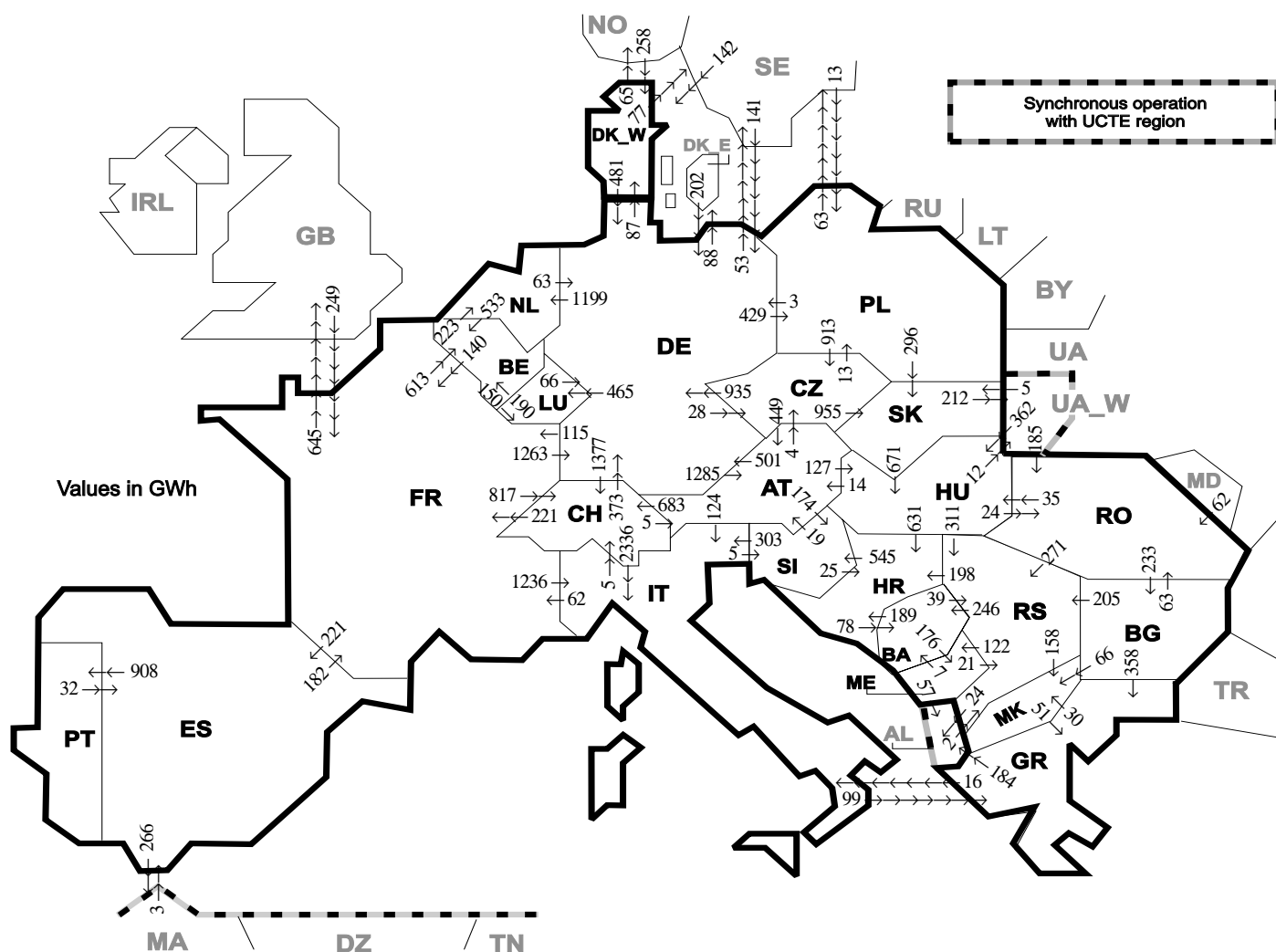
<sup>2</sup> The reported figures are best estimates based on actual measurements and extrapolations

<sup>3</sup> Data on hydro, other renewable, not clearly identifiable production are not yet available

<sup>4</sup> From June 2007 on including DK\_W

All representativities of the national production and consumption values used to calculate values at a representativity of 100% as stated in the table above

Countries	AT	BA	BE	BG	CH	CZ	DE	ES	FR	GR	HR	HU	IT	LU	ME	MK	NL	PL	PT	RO	RS	SI	SK	DK_W	UA_W
Production																									
Therm.nuclear	100	100	100	100	100	100	100	100	100	100	100	100	100	100	100	100	100	100	100	100	100	100	100	100	100
Thermal conv.	100	100	100	100	100	100	100	97	100	100	100	100	100	100	100	100	100	100	95	100	100	100	100	100	100
Hydro prod	100	100	100	100	100	100	100	100	100	100	100	100	100	100	100	100	100	100	100	100	100	100	100	100	100
Other renew.	100	100	100	100	100	100	100	95	100	100	100	100	100	100	100	100	100	100	100	100	100	100	100	100	100
Not identify	100	100	100	100	100	100	100	100	100	100	100	100	100	100	100	100	100	100	100	100	100	100	100	100	100
Consumption	100	100	100	100	100	100	100	98	100	100	100	100	100	100	100	100	100	100	97	100	100	95	100	100	100

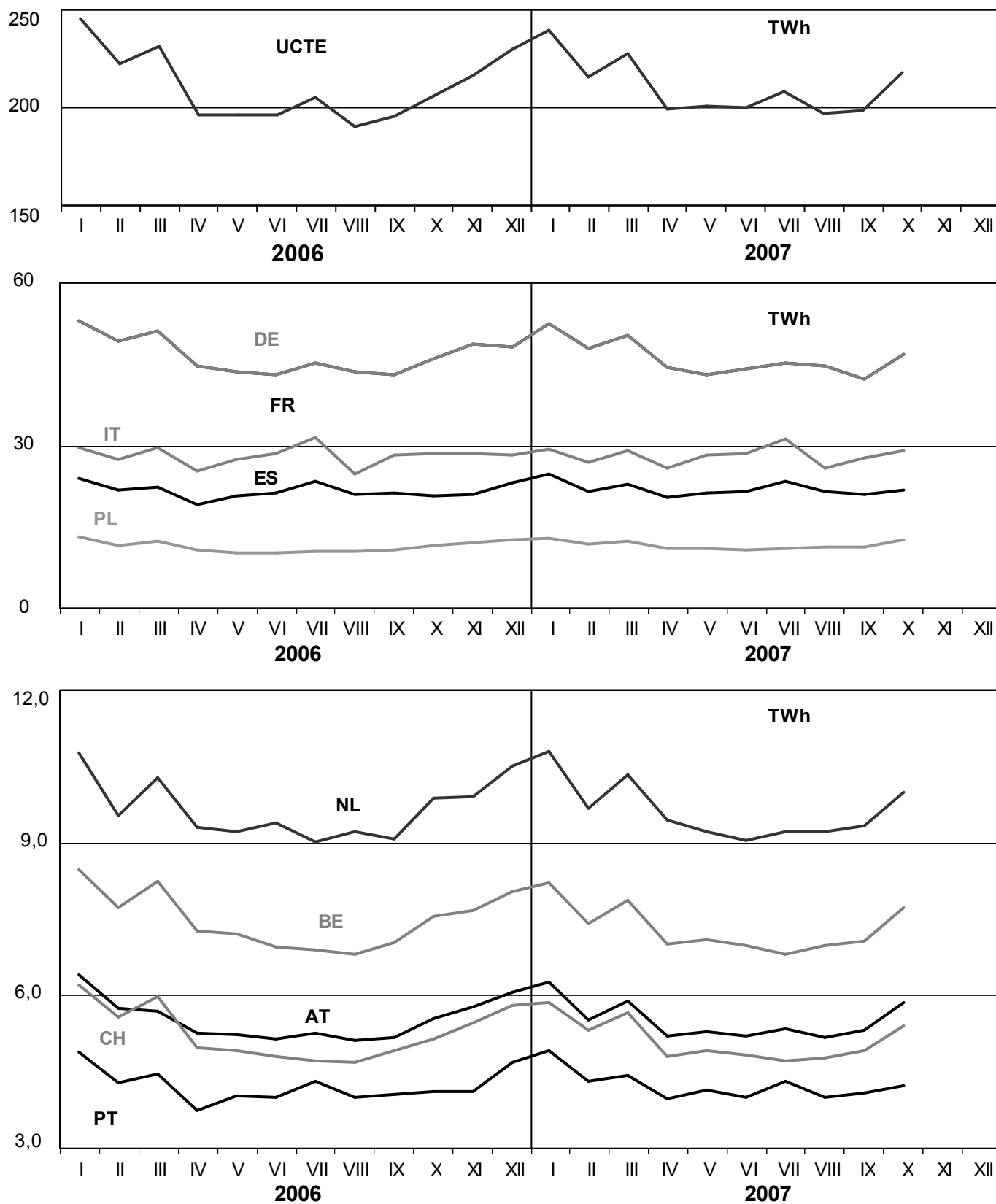


Exporting countries	AT	BA	BE	BG	CH	CZ	DE	ES	FR	GR	HR	HU	IT	LU	ME	MK	NL	PL	PT	RO	RS	SI	SK	DK_W	UA_W	Other III <sup>1</sup>	Sum export
AT	-	-	-	-	683	4	501	-	-	-	-	127	124	-	-	-	-	-	-	-	-	174	-	-	-	-	1613
BA	-	-	-	-	-	-	-	-	-	-	189	-	-	-	176	-	-	-	-	-	39	-	-	-	-	-	404
BE	-	-	-	-	-	-	-	-	140	-	-	-	-	150	-	-	223	-	-	-	-	-	-	-	-	-	513
BG	-	-	-	-	-	-	-	-	-	358	-	-	-	-	66	-	-	-	63	205	-	-	-	-	-	0	692
CH	5	-	-	-	-	-	373	-	221	-	-	-	2336	-	-	-	-	-	-	63	205	-	-	-	-	-	2935
CZ	449	-	-	-	-	-	935	-	-	-	-	-	-	-	-	-	-	13	-	-	-	955	-	-	-	-	2352
DE	1285	-	-	-	1377	28	-	-	115	-	-	-	465	-	-	1199	429	-	-	-	-	-	87	-	141	-	5126
ES	-	-	-	-	-	-	-	-	182	-	-	-	-	-	-	-	-	-	908	-	-	-	-	-	-	266	1356
FR	-	-	613	-	817	-	1263	221	-	-	-	-	1236	-	-	-	-	-	-	-	-	-	-	-	-	-	4795
GR	-	-	-	0	-	-	-	-	-	-	-	-	16	-	-	30	-	-	-	-	-	-	-	-	-	-	230
HR	-	78	-	-	-	-	-	-	-	-	0	-	-	-	-	-	-	-	-	-	0	545	-	-	-	-	623
HU	14	-	-	-	-	-	-	-	-	-	631	-	-	-	-	-	-	-	-	24	311	0	-	12	-	-	992
IT	0	-	-	-	5	-	-	-	62	99	-	-	-	-	-	-	-	-	-	-	-	5	-	-	-	-	171
LU	-	-	190	-	-	-	66	-	-	-	-	-	-	-	-	-	-	-	-	-	-	-	-	-	-	-	256
ME	-	7	-	-	-	-	-	-	-	-	-	-	-	-	-	-	-	-	-	-	-	21	-	-	-	57	85
MK	-	-	-	0	-	-	-	-	-	-	-	-	-	-	-	-	-	-	-	-	-	0	-	-	-	-	51
NL	-	-	533	-	-	-	63	-	-	-	-	-	-	-	-	-	-	-	-	-	-	-	-	-	-	-	596
PL	-	-	-	-	913	3	-	-	-	-	-	-	-	-	-	-	-	-	-	-	-	-	296	-	-	63	1275
PT	-	-	-	-	-	-	-	32	-	-	-	-	-	-	-	-	-	-	908	-	-	-	-	-	-	-	32
RO	-	-	-	233	-	-	-	-	-	-	-	35	-	-	-	-	-	-	-	-	271	-	-	0	0	0	539
RS	-	246	-	0	-	-	-	-	-	-	198	0	-	122	158	-	-	-	-	0	-	-	-	-	-	24	748
SI	19	-	-	-	-	-	-	-	-	-	25	303	-	-	-	-	-	-	-	-	-	-	-	-	-	-	347
SK	-	-	-	-	-	0	-	-	-	-	-	671	-	-	-	-	-	-	0	-	-	-	-	-	-	-	883
DK_W	-	-	-	-	-	-	481	-	-	-	-	-	-	-	-	-	-	-	-	-	-	-	-	-	-	142	623
UA_W	-	-	-	-	-	-	-	-	-	-	-	-	-	-	-	-	-	-	-	185	-	5	-	-	-	-	552
Other III <sup>1</sup>	-	-	-	0	-	-	343	3	249	0	-	-	-	-	0	-	-	13	-	62	2	-	-	400	-	-	1072
<b>Sum imp</b>	<b>1772</b>	<b>331</b>	<b>1336</b>	<b>233</b>	<b>2882</b>	<b>945</b>	<b>4028</b>	<b>256</b>	<b>969</b>	<b>508</b>	<b>1043</b>	<b>1195</b>	<b>4015</b>	<b>615</b>	<b>298</b>	<b>254</b>	<b>1422</b>	<b>455</b>	<b>908</b>	<b>334</b>	<b>849</b>	<b>724</b>	<b>1256</b>	<b>487</b>	<b>224</b>	<b>1522</b>	<b>28861</b>

Sum of physical energy flows between UCTE countries = 25491GWh Total physical energy flows = 28861GWh

<sup>1</sup> Other III: Albania, Belarus, Denmark East, Great Britain, Morocco, Republic of Moldavia, Norway, Sweden, Republic of Turkey and Ukraina

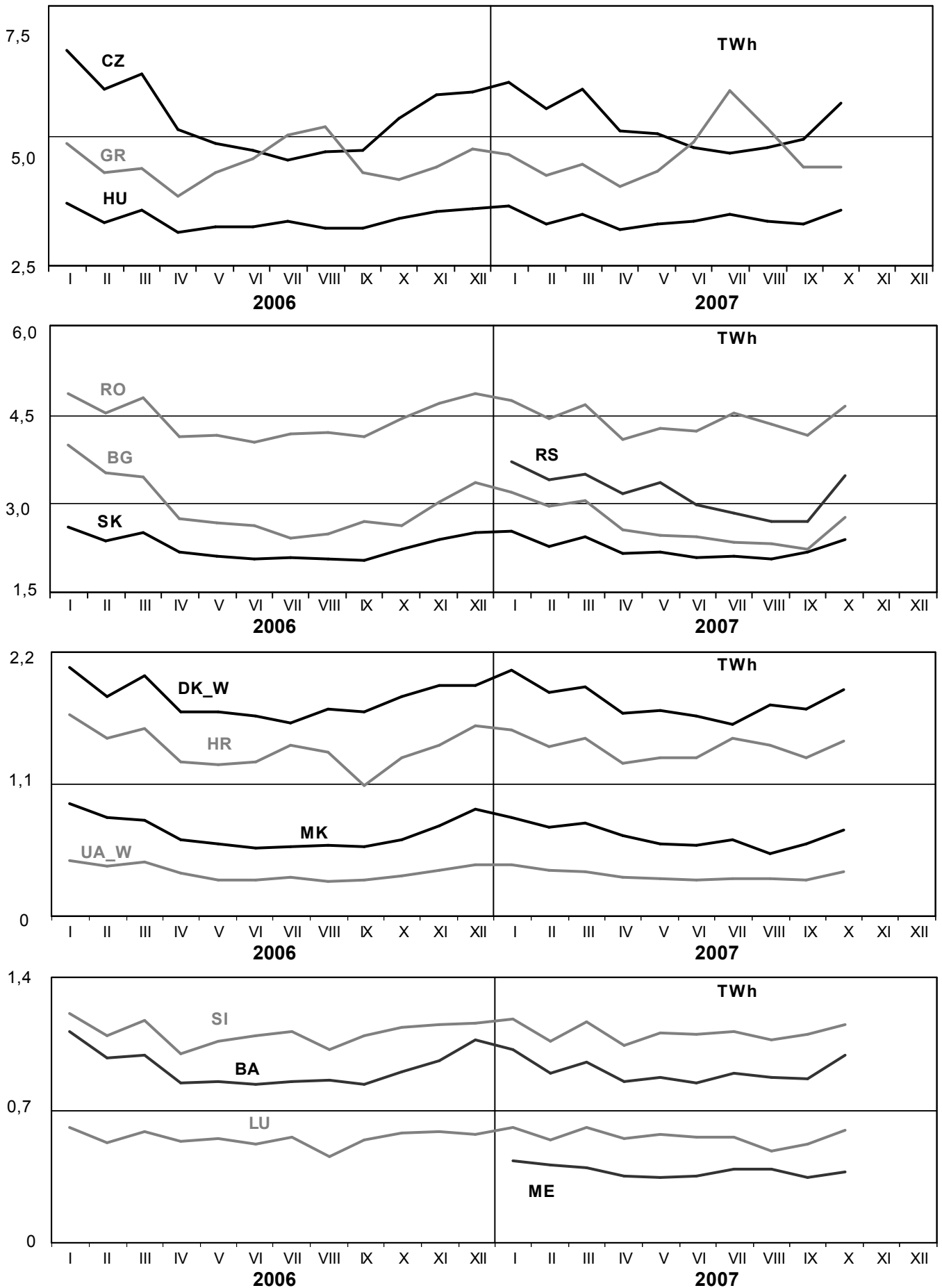
These physical energy flows were measured on the cross-frontier transmission lines (≤ 110 kV) listed in table 9 of the Statistical Yearbook. These values may differ from the official statistics and the exchange balances in chapter 1.



# 3

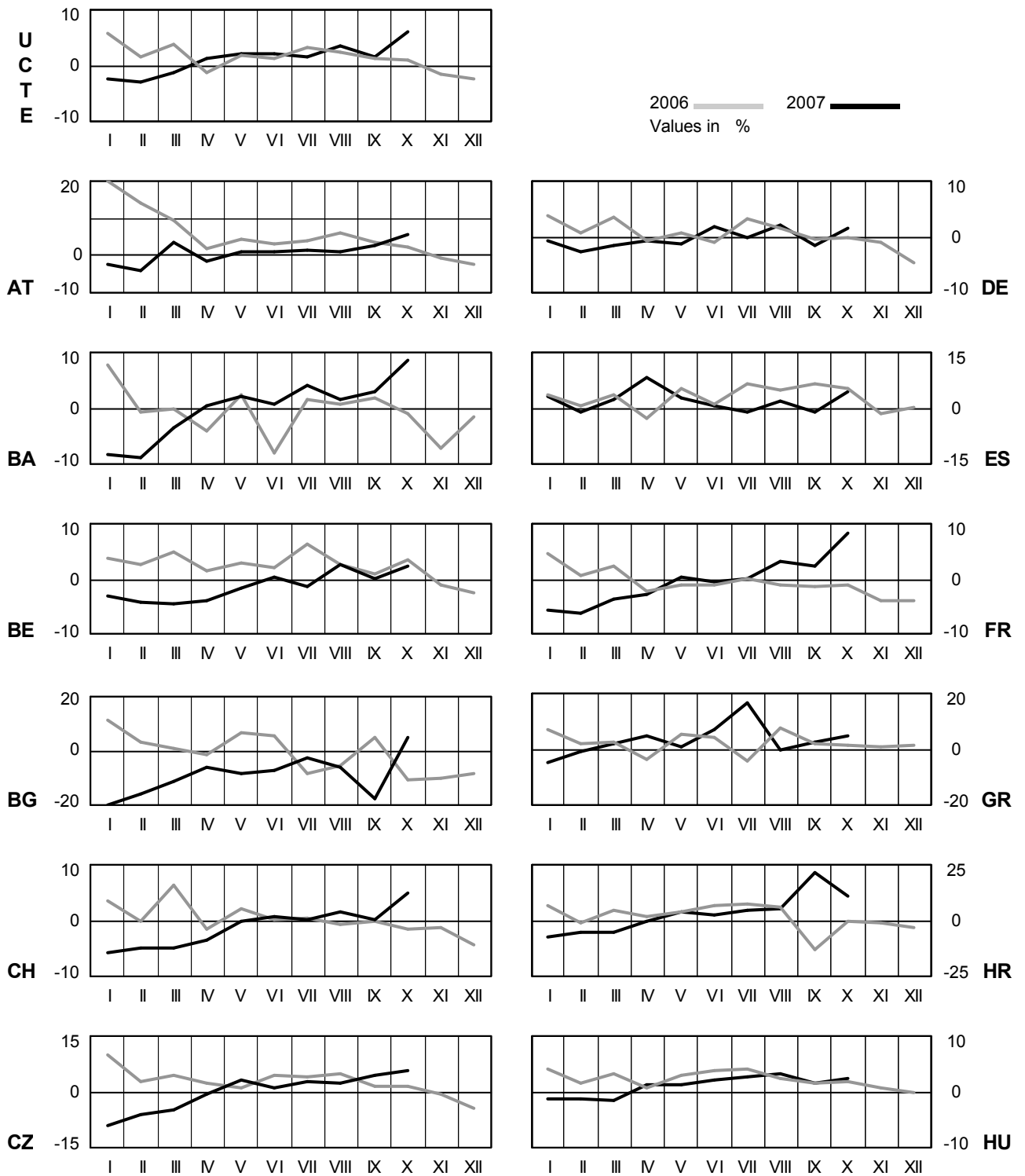
## Monthly consumption

October 2007



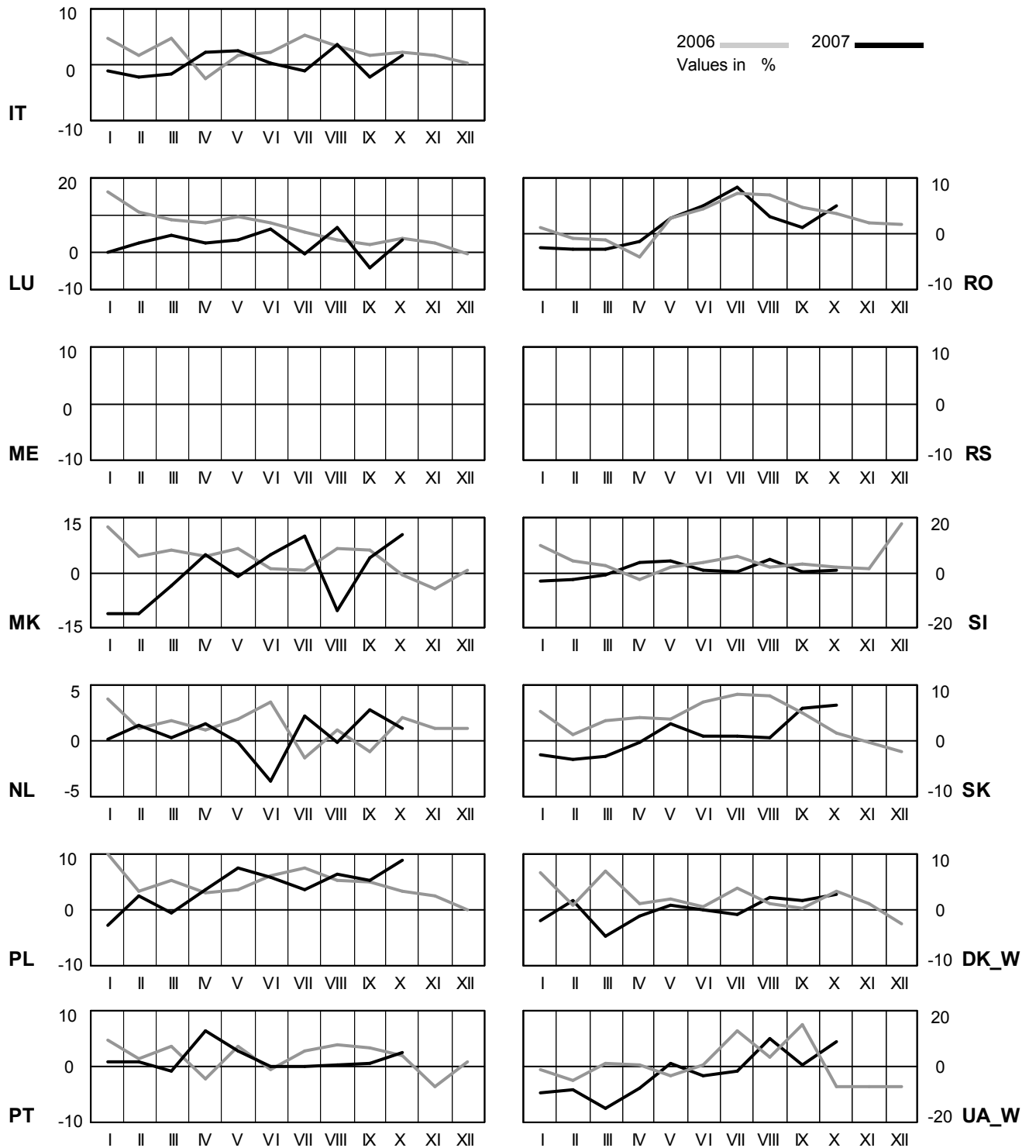
# 4 Monthly consumption variation

October 2007



# 4 Monthly consumption variation

October 2007

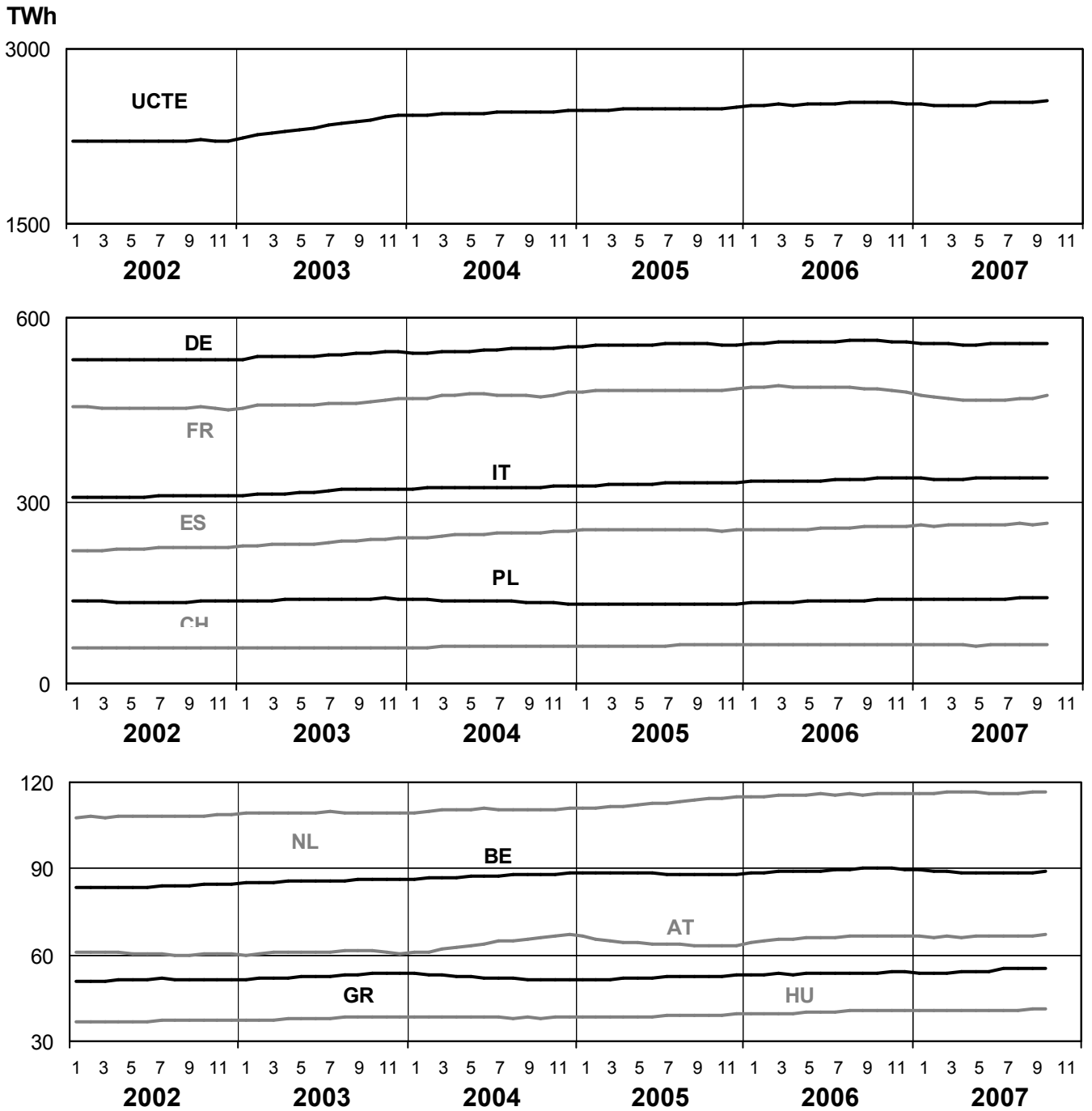




# 5

## Consumption of the last 12 months

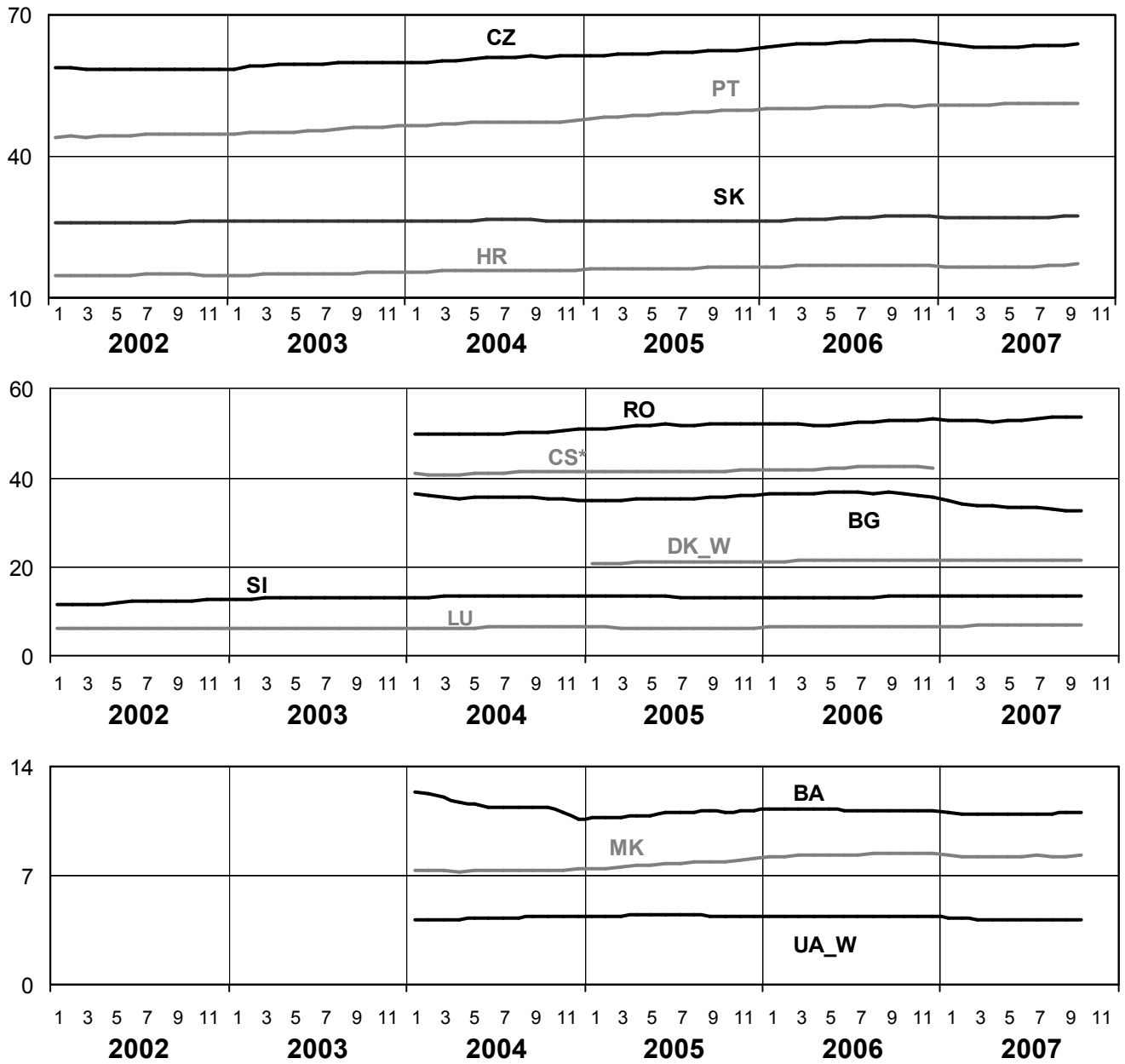
October 2007



# 5

## Consumption of the last 12 months

October 2007

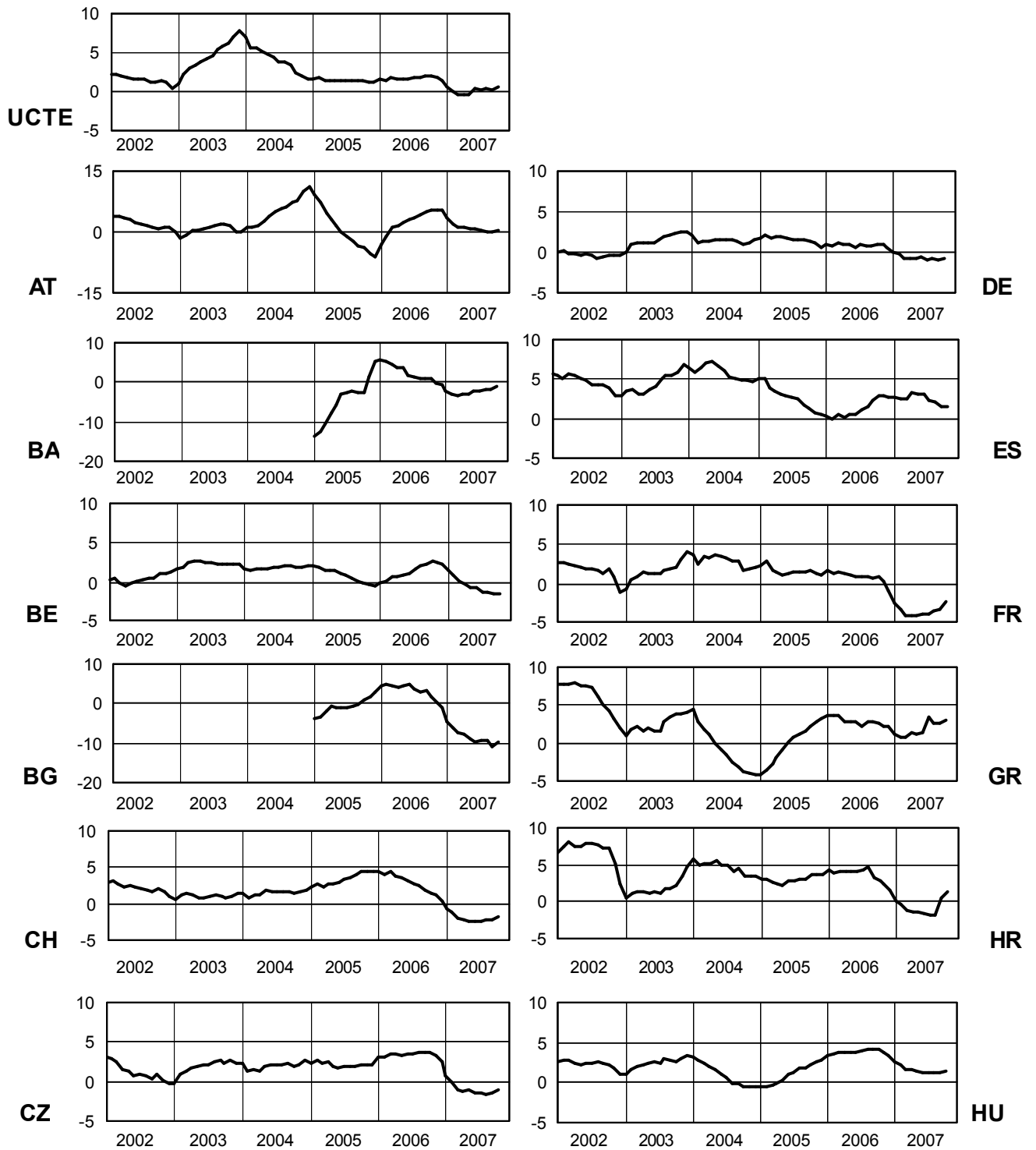


\* CS consumption values until December 2006; from 2007 on ME and RS as separate countries

# 6

## Variation of the last 12 months' consumption in %

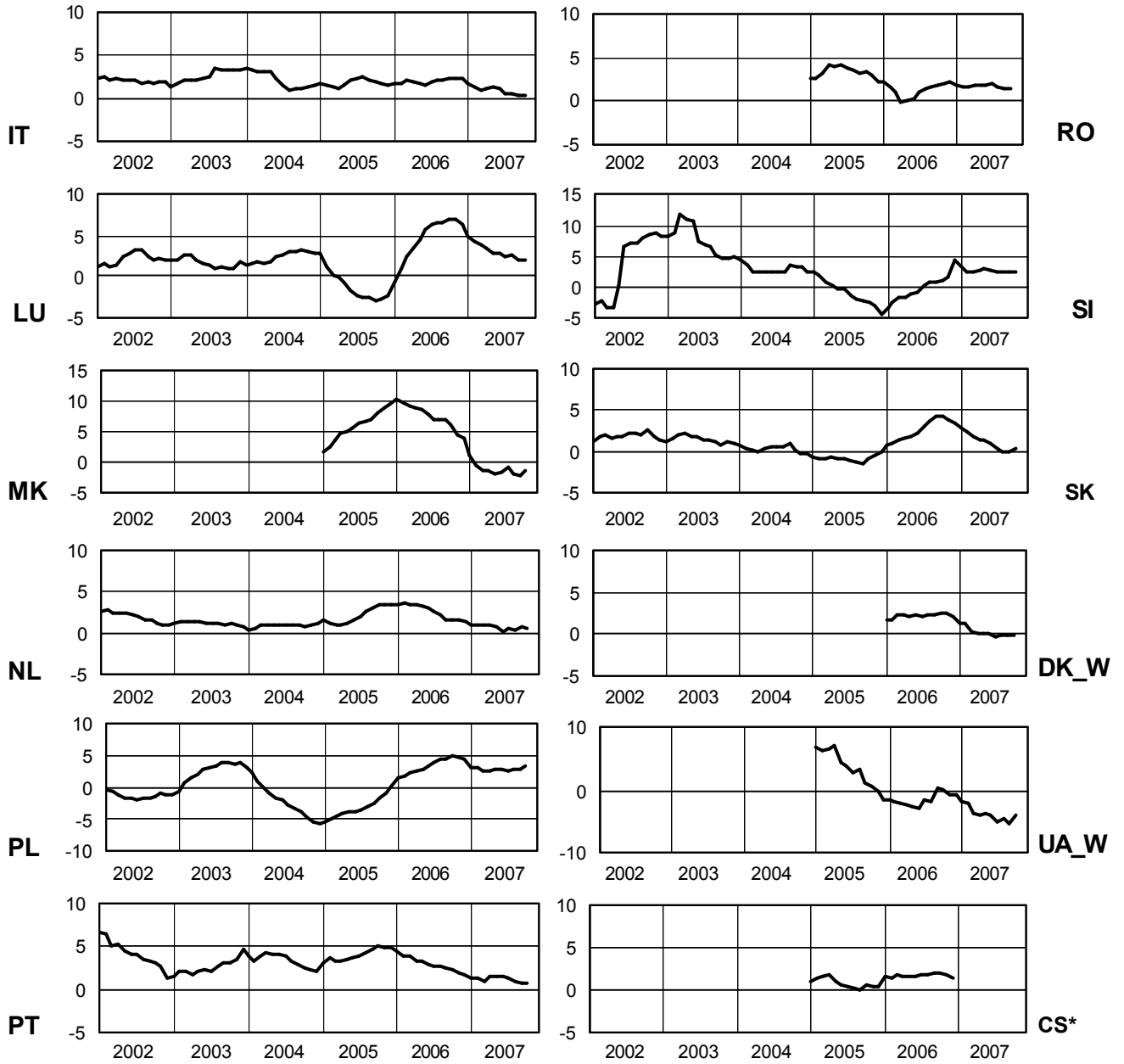
October 2007



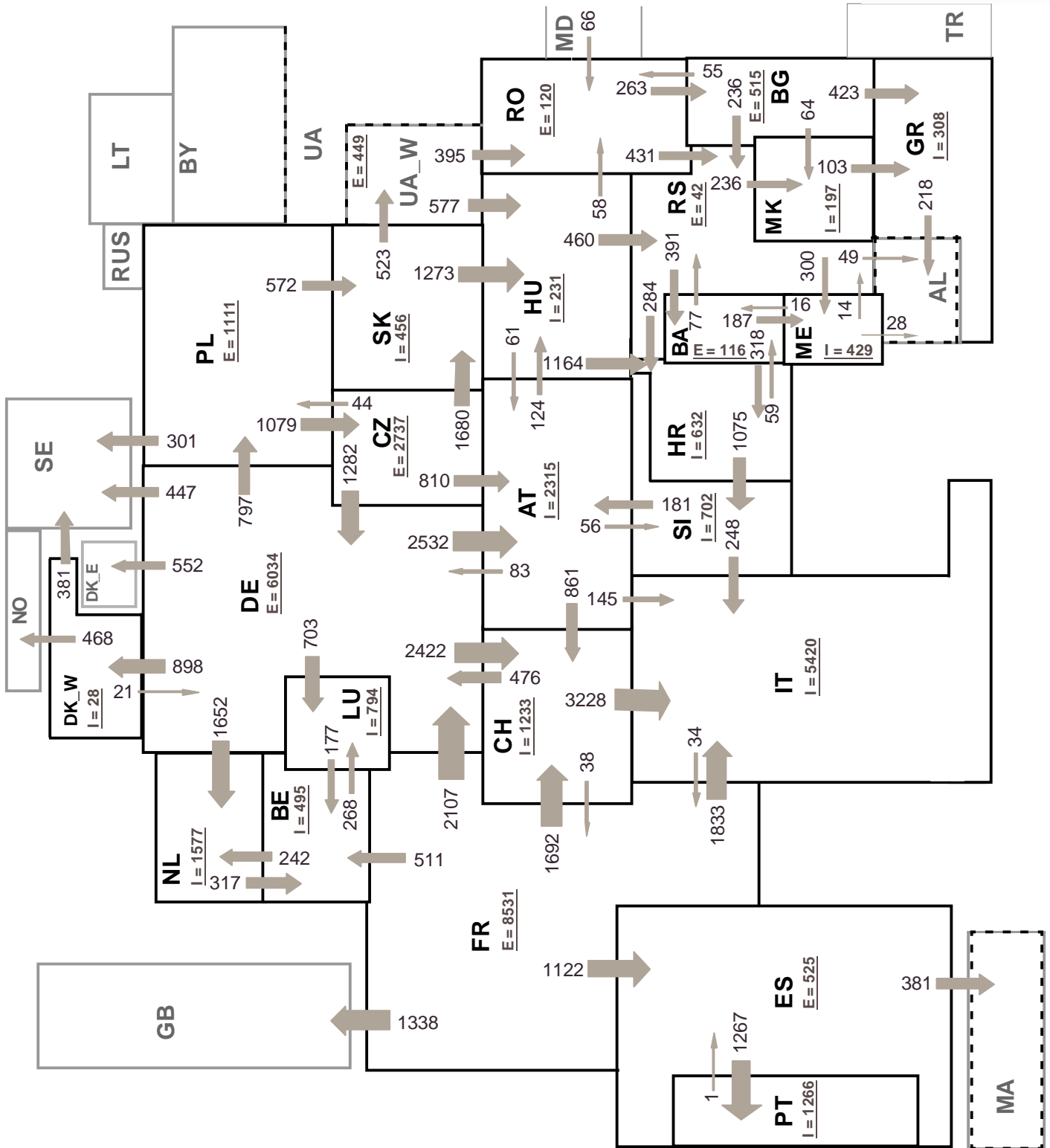
# 6

## Variation of the last 12 months' consumption in %

October 2007



\* CS consumption values until December 2006; from 2007 on ME and RS as separate countries



Sum of load flows in MW

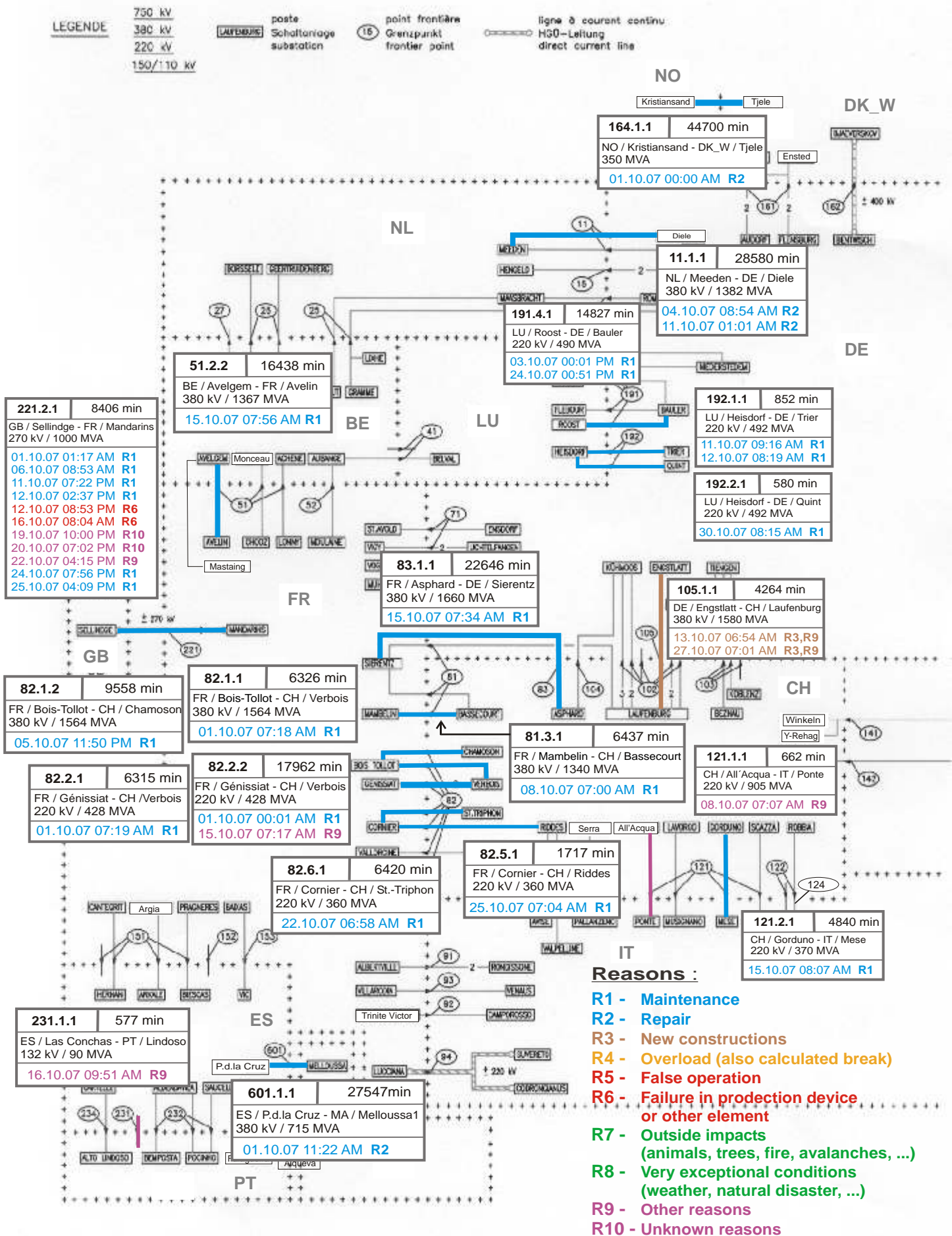
UCTE = 37051 MW

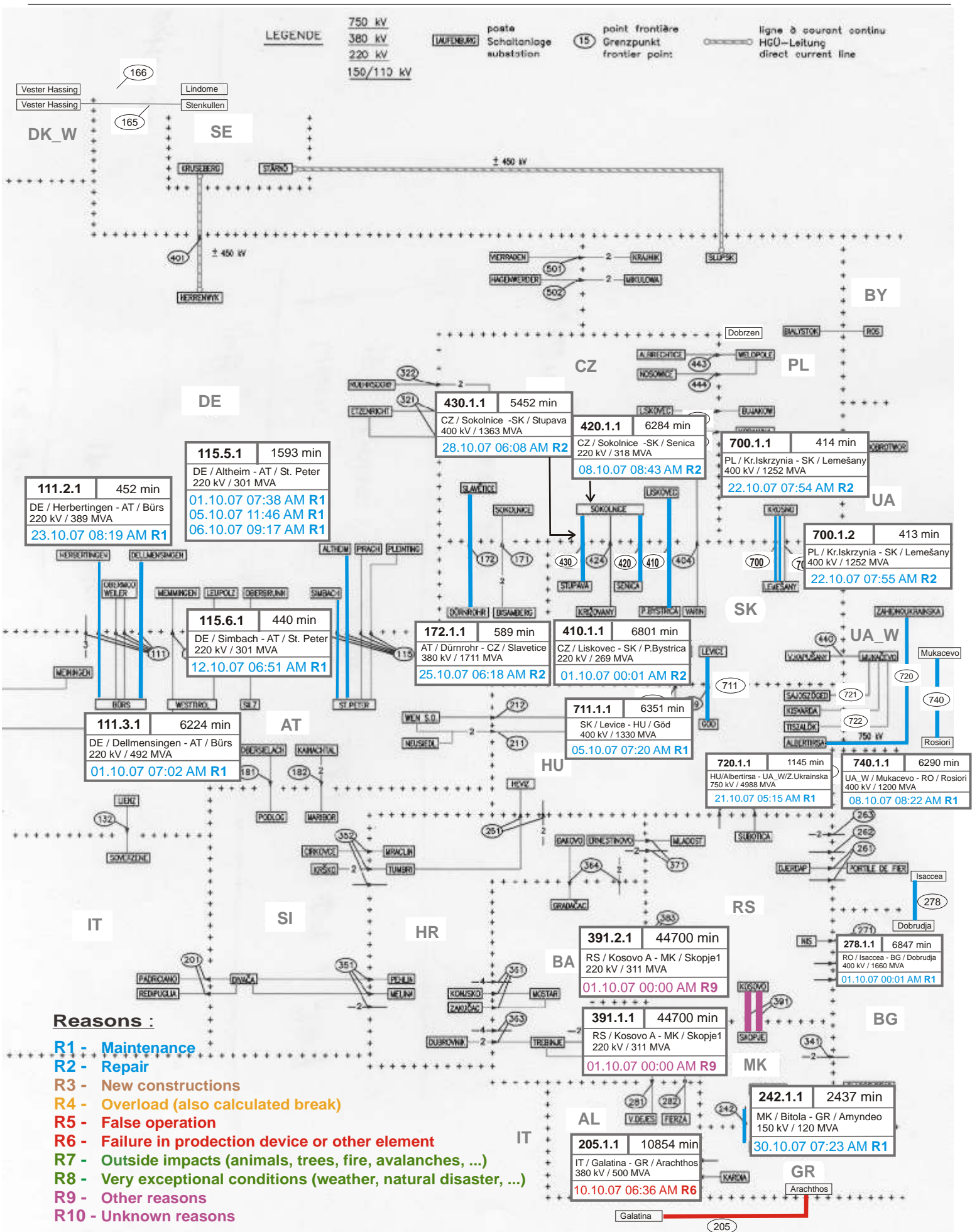
Total = 42775 MW

Synchronous operation with UCTE region

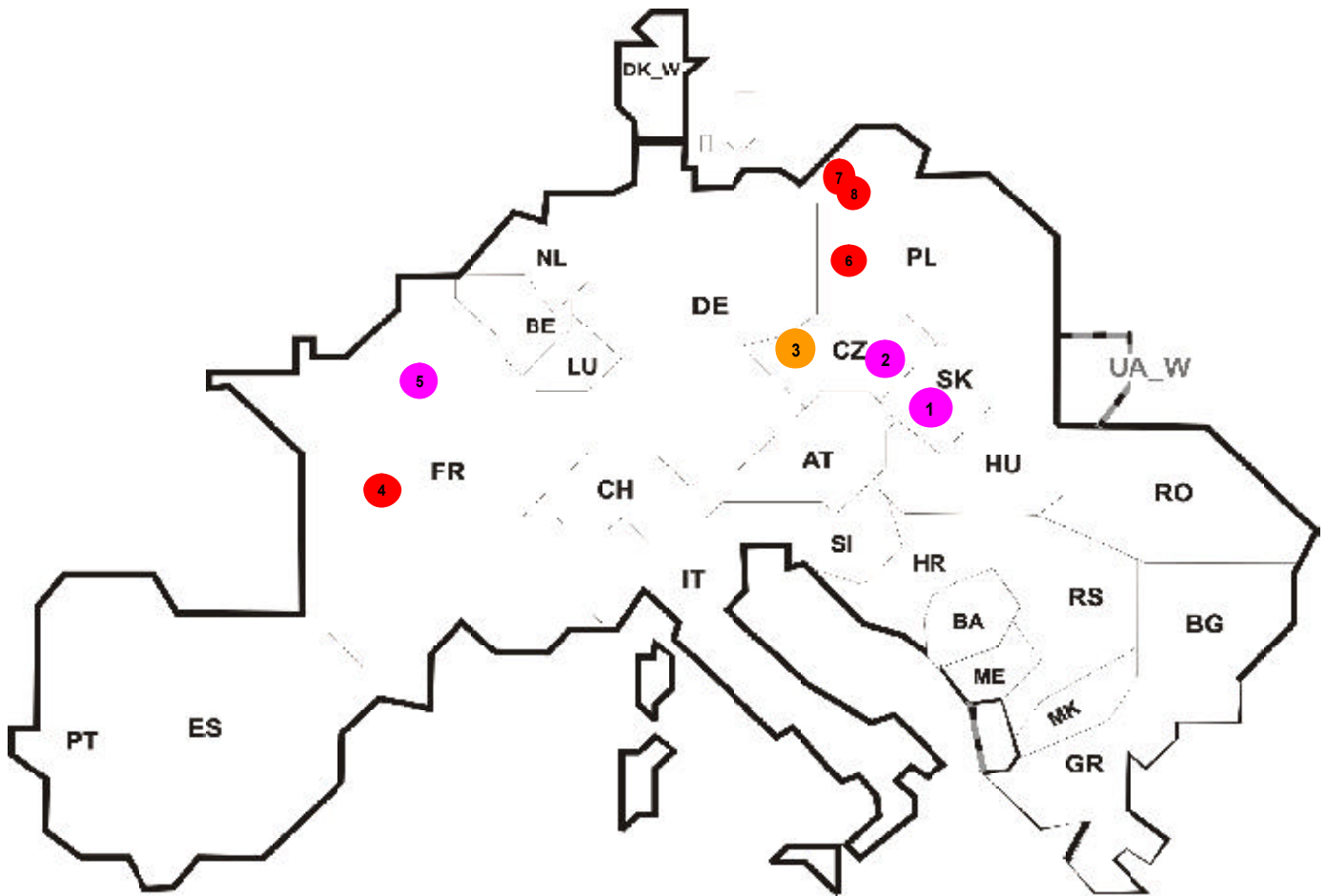
I = Import balance  
E = Export balance











Reasons:

- R4** Overload (also calculated break)
- R5** False operation
- R6** Failure in protection device or other element
- R7** Outside impacts (animals, trees, fire, avalanches, ...)
- R8** Very exceptional conditions (weather, natural disaster, ...)
- R9** Other reasons
- R10** Unknown reasons

No	Country	Substation	Reason	Energy not supplied <sup>2</sup> [ MWh ]	Total loss of power [ MW ]	Restoration time [ min ]	Equivalent time of interruption <sup>1</sup>
1	SK	Sucany	R9	25	135	11	0,480
2	CZ	Otrokovice	R9	21	206	6	0,169
3	CZ	Chotejovice	R4	3	17	10	0,023
4	FR	Marmagne	R6	11	28	23	0,012
5	FR	Buttes Chaumont	R9	4	46	5	0,004
6	PL	Patnow	R5	0	302	78	0,000
7	PL	Krajnik	R6	0	150	50	0,000
8	PL	Krajnik	R6	0	113	43	0,000

<sup>1</sup> ( year [in min] \* energy not supplied ) / consumption last 12 months

Control area	Export Programs	Import Programs	Export Programs at 03:00	Import Programs at 03:00	Export Programs at 11:00	Import Programs at 11:00
AT	640602	937099	802	823	1692	1274
BA	440103	364109	334	190	404	190
BE	168096	954373	152	681	287	1739
BG	n.a.	n.a.	n.a.	n.a.	n.a.	n.a.
CH	2400004	2376627	2826	4111	3885	3152
CZ	2190893	739684	3533	751	2917	1443
DE	3059244	1898516	4780	2133	2393	1887
ES	1479680	363017	1704	1165	2099	300
FR	6573277	2729495	10229	1734	9692	2999
GR	59894	336388	0	290	0	290
HR	227761	644359	14	600	122	494
HU	945715	1147457	1340	1551	1316	1740
IT	171499	4015649	34	5454	52	7038
ME	233900	429161	215	630	205	615
MK	3900	210000	30	231	30	276
NL	697485	1515992	300	1884	492	1926
PL	741136	27984	1046	73	1000	0
PT	87	886953	0	1300	0	1200
RO	354977	142417	311	178	594	150
RS	550465	655421	891	864	999	967
SI	208701	588981	60	801	323	929
SK	625956	928722	1796	2180	1325	2076
DK_W	480362	582331	895	852	930	1100
UA_W	327220	3057	465	15	500	0

- Control areas can differ from national borders ( i.e. German block which includes parts of AT, LU and DK ).

- Values are calculated on an hourly base ( MWh ).

- This values are not the provisional values entered in the VULCANUS system, but the definitive values after an eventual correction during the actual date.

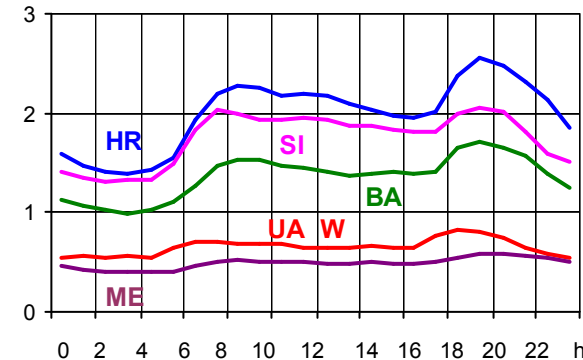
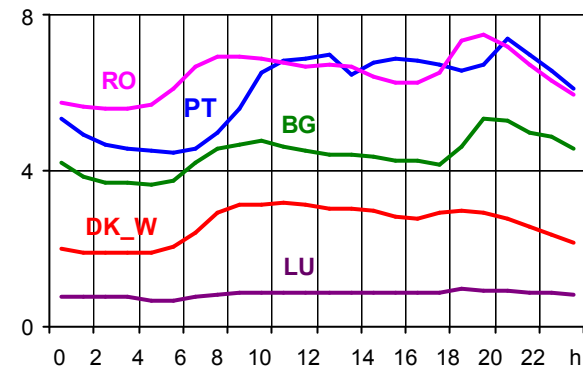
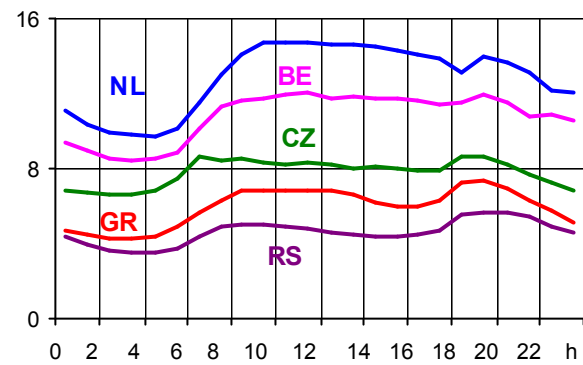
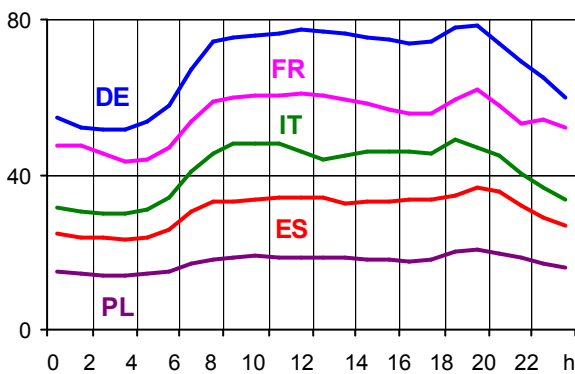
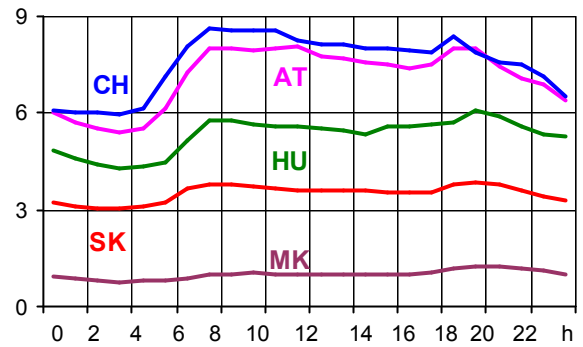
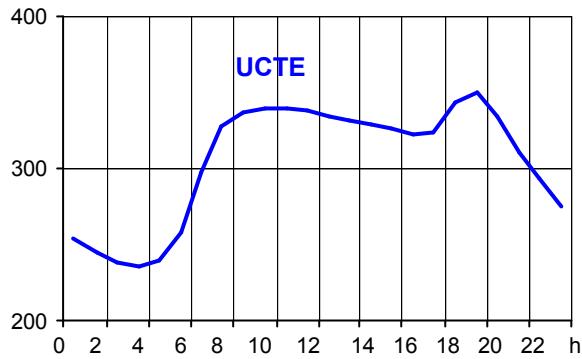
- Export Programs: Sum of all positive values of every hour of every border  
 - Import Programs: Sum of all negative values of every hour of every border

- Export Programs at 03:00: Sum of all positive values the third Wednesday from 02:00 to 03:00 a.m.  
 - Import Programs at 03:00: Sum of all negative values the third Wednesday from 02:00 to 03:00 a.m.

- Export Programs at 11:00: Sum of all positive values the third Wednesday from 10:00 to 11:00 a.m.  
 - Import Programs at 11:00: Sum of all negative values the third Wednesday from 10:00 to 11:00 a.m.

Consumption hourly load curves on 17.10.2007 CET

Values in GW



	Highest load		Load representativity %
	MW	var.% <sup>1</sup>	
AT	8060	2,1	100
BA	1706	1,6	100
BE <sup>2</sup>	12023	-0,9	100
BG	5325	-2,7	100
CH	8606	2,0	100
CZ	8618	0,4	100
DE	78662	3,0	91
ES	36789	5,1	98
FR	61781	5,3	100
GR	7371	-2,9	100
HR	2562	5,0	100
HU	6096	2,1	100
IT	48962	2,9	100
LU	952	0,1	100
ME	580	-	100
MK	1243	4,8	100
NL	14744	-7,4	100
PL <sup>3</sup>	20551	2,8	100
PT	7369	3,6	97
RO	7475	2,1	100
RS	5696	-	100
SI	2060	-1,4	95
SK	3867	-1,6	100
DK_W	3198	2,5	100
<b>UCTE<sup>4</sup></b>	<b>349451</b>	<b>2,1</b>	
UA_W	831	-0,4	100

<sup>1</sup> Variation as compared to corresponding month of the previous year

<sup>2</sup> The reported figures are best estimates based on actual measurements and extrapolations.

<sup>3</sup> Operational data

<sup>4</sup> From June 2007 on including DK\_W



## Contact

Boulevard Saint-Michel, 15  
B-1040 Brussels – Belgium  
Tel +32 2 741 69 40 – Fax +32 2 741 69 49

[info@ucte.org](mailto:info@ucte.org)  
[www.ucte.org](http://www.ucte.org)