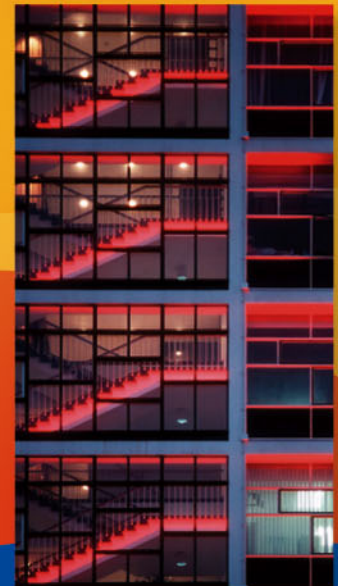
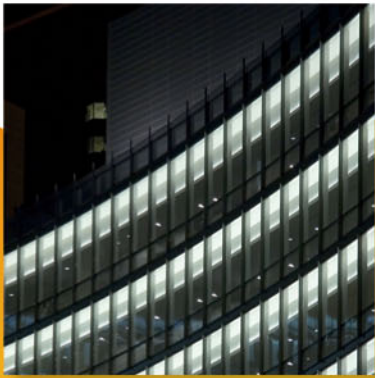


UCTE



October 2006

Monthly provisional values
union for the co-ordination of transmission of electricity

| Table of contents | | Page |
|--------------------------|--|-------------|
| 1 | Electricity supply situation of the countries | 2 |
| 2 | Physical energy flows | 3 |
| 3 | Monthly consumption | 4 |
| 4 | Monthly consumption variation | 6 |
| 5 | Consumption of the last 12 months | 8 |
| 6 | Variation of the last 12 months' consumption | 10 |
| 7 | Load flows (night) | 12 |
| 8 | Load flows (day) | 13 |
| 9 | Unavailability of international tie lines (major events) | 14 |
| 10 | Network reliability (major events) | 16 |
| 11 | Scheduled exchanges | 17 |
| 12 | Load on the 3 rd Wednesday | 18 |

General remarks and abbreviations used in the tables

- All values of production and consumption in chapter 1, 3&4, 5&6 and 12 are calculated to represent 100% of the national values.
- DK_W Denmark West represents the Western part of Denmark synchronously interconnected with UCTE (Jutland and Funen).
- UA_W Ukraine West represents the so-called Burshtyn Island synchronously interconnected with UCTE.
- CET Central European Time
- The Bulgarian values of production and consumption are gross values.

| Countries | Net production in GWh | | | | | | | Exchange balance in GWh | Pump in GWh | Consumption in GWh | | | |
|-----------------|-----------------------|---------------|--------------|--------------|---------------|--------------|---------------------------|----------------------------|----------------|--------------------|------------|----------------|------------|
| | Therm. nuclear | Therm. conv. | Hydro prod | Other renew. | Of which wind | Not identify | Total | | | monthly | var. [%] | last 12 months | var. [%] |
| AT | 0 | 1930 | 2248 | 0 | 0 | 566 | 4744 ¹ | 1090 | 273 | 5561 | 2,4 | 66696 | 5,3 |
| BA | 0 | 653 | 385 | 0 | 0 | 0 | 1038 | -131 | 0 | 907 | -1,1 | 11199 | 1,1 |
| BE ² | 3933 | 2738 | 131 | 226 | 35 | 0 | 7028 ¹ | 664 | 153 | 7539 | 4,5 | 90162 | 3,6 |
| BG | 1313 | 1654 | 218 | 0 | 0 | 0 | 3185 | -487 | 56 | 2642 | -10,9 | 36339 | 1,6 |
| CH | 2388 | 177 | 2673 | 82 | 1 | 0 | 5320 ¹ | 9 | 184 | 5145 | -1,5 | 63555 | 1,5 |
| CS | 0 | 2562 | 605 | 0 | 0 | 0 | 3167 ¹ | 196 | 74 | 3289 | -3,7 | 42440 | 2,3 |
| CZ | 1578 | 4678 | 228 | 15 | 6 | 0 | 6499 ¹ | -1075 | 91 | 5333 | 1,5 | 64667 | 3,7 |
| DE | 13593 | 28038 | 1934 | 4870 | 3172 | 0 | 48435 ¹ | -1817 | 857 | 45761 | -0,6 | 558090 | 0,3 |
| ES | 4638 | 11774 | 2273 | 2308 | 2261 | 0 | 20993 ¹ | -236 | 546 | 20696 | 4,8 | 259835 | 4,6 |
| FR | 35706 | 2935 | 4860 | 476 | 217 | 0 | 43977 | -7313 | 665 | 35999 | -2,5 | 481974 | 0,5 |
| GR | 0 | 3498 | 315 | 130 | 122 | 0 | 3943 ¹ | 298 | 65 | 4176 | 1,6 | 53901 | 2,6 |
| HR | 0 | 485 | 386 | 4 | 3 | 0 | 875 ¹ | 467 | 18 | 1324 | -0,1 | 16880 | 2,9 |
| HU ³ | 1016 | 1750 | 0 | 0 | 0 | 0 | 2766 ¹ | 664 | 0 | 3430 | 2,8 | 40590 | 4,1 |
| IT | 0 | 20249 | 3339 | 697 | 259 | 0 | 24285 ¹ | 4844 | 718 | 28411 | 1,7 | 335161 | 1,7 |
| LU | 0 | 257 | 78 | 11 | 6 | 0 | 346 | 335 | 102 | 579 | 3,6 | 6604 | 7,0 |
| MK | 0 | 445 | 112 | 0 | 0 | 0 | 557 ¹ | 86 | 0 | 643 | -0,5 | 8404 | 6,1 |
| NL | 189 | 8950 | 0 | 686 | 289 | 0 | 9825 ¹ | 1876 | 0 | 11701 | 20,9 | 117742 | 3,1 |
| PL | 0 | 12421 | 151 | 19 | 11 | 0 | 12591 ¹ | -887 | 78 | 11626 | 3,3 | 136225 | 4,9 |
| PT | 0 | 2034 | 956 | 550 | 391 | 0 | 3540 ¹ | 535 | 78 | 4173 | 3,1 | 51222 | 3,2 |
| RO | 413 | 3190 | 1103 | 0 | 0 | 0 | 4706 ¹ | -278 | 6 | 4422 | 3,6 | 52850 | 1,9 |
| SI | 513 | 426 | 221 | 0 | 0 | 0 | 1160 | -21 | 0 | 1139 | 2,2 | 13136 | 1,0 |
| SK | 1335 | 535 | 185 | 1 | 0 | 182 | 2238 ¹ | 34 | 20 | 2252 | 1,4 | 27239 | 4,1 |
| UCTE | 66615 | 111379 | 22401 | 10075 | 6773 | 748 | 211218¹ | -1147 | 3984 | 206748 | 1,5 | 2534911 | 2,0 |
| DK_W | 0 | 1645 | 2 | 481 | 367 | 0 | 2128 ¹ | -292 | 0 | 1836 | 3,4 | 21768 | 2,6 |
| UA_W | 0 | 685 | 5 | 0 | 0 | 0 | 690 ¹ | -351 | 0 | 339 | -7,4 | 4390 | 0,1 |

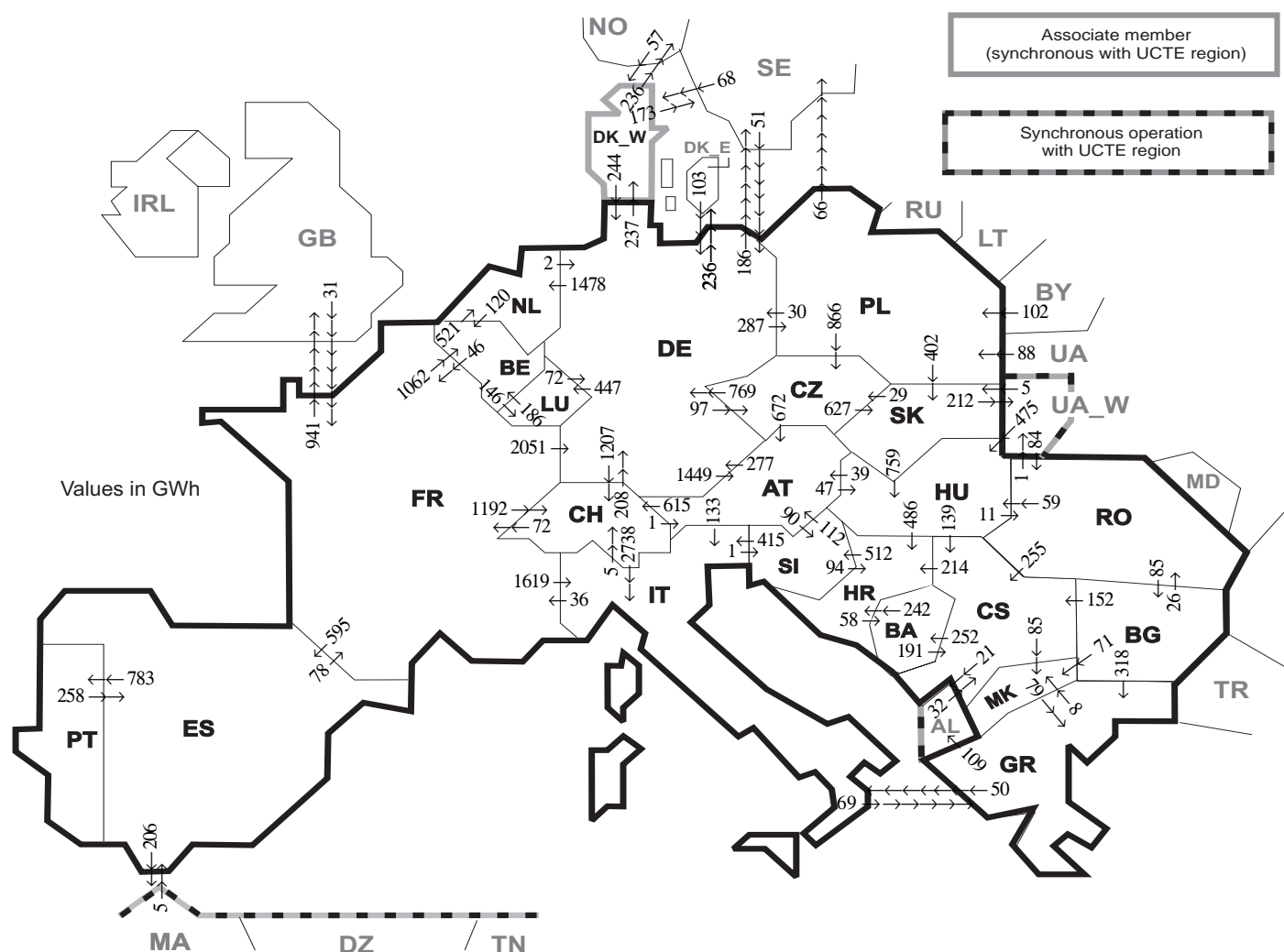
¹ Including deliveries from industry

² The reported figures are best estimates based on actual measurements and extrapolations.

³ Data on hydro, other renewable, not clearly identifiable production are not yet available.

All representativities of the national production and consumption values used to calculate values at a representativity of 100% as stated in the table above

| Countries | AT | BA | BE | BG | CH | CS | CZ | DE | ES | FR | GR | HR | HU | IT | LU | MK | NL | PL | PT | RO | SI | SK | DK_W | UA_W |
|---------------|-----|-----|-----|-----|-----|-----|-----|-----|-----|-----|-----|-----|-----|-----|-----|-----|-----|-----|-----|-----|-----|-----|------|------|
| Production | | | | | | | | | | | | | | | | | | | | | | | | |
| Therm.nuclear | 100 | 100 | 100 | 100 | 100 | 100 | 100 | 100 | 100 | 100 | 100 | 100 | 100 | 100 | 100 | 100 | 100 | 100 | 100 | 100 | 100 | 100 | 100 | 100 |
| Thermal conv. | 100 | 100 | 100 | 100 | 100 | 100 | 100 | 100 | 97 | 100 | 100 | 100 | 100 | 100 | 100 | 100 | 100 | 100 | 92 | 100 | 100 | 100 | 100 | 100 |
| Hydro prod | 100 | 100 | 100 | 100 | 100 | 100 | 100 | 100 | 100 | 100 | 100 | 100 | 100 | 100 | 100 | 100 | 100 | 100 | 100 | 100 | 100 | 100 | 100 | 100 |
| Other renew. | 100 | 100 | 100 | 100 | 100 | 100 | 100 | 100 | 95 | 100 | 100 | 100 | 100 | 100 | 100 | 100 | 100 | 100 | 100 | 100 | 100 | 100 | 100 | 100 |
| Not identify | 100 | 100 | 100 | 100 | 100 | 100 | 100 | 100 | 100 | 100 | 100 | 100 | 100 | 100 | 100 | 100 | 100 | 100 | 100 | 100 | 100 | 100 | 100 | 100 |
| Consumption | 100 | 100 | 100 | 100 | 100 | 100 | 100 | 100 | 98 | 100 | 100 | 100 | 100 | 100 | 100 | 100 | 100 | 100 | 96 | 100 | 95 | 100 | 100 | 100 |



| Exporting countries | Importing countries | | | | | | | | | | | | | | | | | | | | Sum export | | | | | | |
|------------------------|---------------------|------------|-------------|-----------|-------------|------------|------------|-------------|------------|------------|------------|-------------|-------------|-------------|------------|------------|-------------|------------|------------|------------|------------|------------|------------|------------|-------------|------------------------|-----|
| | AT | BA | BE | BG | CH | CS | CZ | DE | ES | FR | GR | HR | HU | IT | LU | MK | NL | PL | PT | RO | | SI | SK | DK_W | UA_W | Other III ¹ | |
| AT | - | - | - | - | 615 | - | 0 | 277 | - | - | - | 47 | 133 | - | - | - | - | - | - | - | 90 | - | - | - | - | 1162 | |
| BA | - | - | - | - | - | 191 | - | - | - | - | - | 242 | - | - | - | - | - | - | - | - | - | - | - | - | - | 433 | |
| BE | - | - | - | - | - | - | - | - | 46 | - | - | - | - | - | 146 | - | 521 | - | - | - | - | - | - | - | - | 713 | |
| BG | - | - | - | - | - | 152 | - | - | - | - | 318 | - | - | - | 71 | - | - | - | - | 26 | - | - | - | - | 0 | 567 | |
| CH | 1 | - | - | - | - | - | 208 | - | 72 | - | - | - | 2738 | - | - | - | - | - | - | - | - | - | - | - | - | 3019 | |
| CS | - | 252 | - | 0 | - | - | - | - | - | - | - | 214 | 0 | - | 85 | - | - | - | 0 | 0 | - | - | - | - | 21 | 572 | |
| CZ | 672 | - | - | - | - | - | - | 769 | - | - | - | - | - | - | - | - | - | 0 | - | - | 627 | - | - | - | - | 2068 | |
| DE | 1449 | - | - | - | 1207 | - | 97 | - | 0 | - | - | - | 447 | - | 1478 | 287 | - | - | - | - | - | 237 | - | 422 | - | 5624 | |
| ES | - | - | - | - | - | - | - | - | 78 | - | - | - | - | - | - | - | - | - | 783 | - | - | 237 | - | - | 206 | 1067 | |
| FR | - | - | 1062 | - | 1192 | - | - | 2051 | 595 | - | - | - | 1619 | - | - | - | - | - | - | - | - | - | - | - | 941 | 7460 | |
| GR | - | - | - | 0 | - | - | - | - | - | - | - | - | 50 | - | 8 | - | - | - | - | - | - | - | - | - | - | 109 | 167 |
| HR | - | 58 | - | - | - | 0 | - | - | - | - | - | 0 | - | - | - | - | - | - | - | - | 512 | - | - | - | - | 570 | |
| HU | 39 | - | - | - | - | 139 | - | - | - | - | - | 486 | - | - | - | - | - | - | - | 11 | 0 | 0 | - | - | - | 675 | |
| IT | 0 | - | - | - | 5 | - | - | - | - | 36 | 69 | - | - | - | - | - | - | - | - | - | 1 | - | - | - | - | 111 | |
| LU | - | - | 186 | - | - | - | - | 72 | - | 36 | - | - | - | - | - | - | - | - | - | - | - | - | - | - | - | 258 | |
| MK | - | - | - | 0 | - | 0 | - | - | - | - | 79 | - | - | - | - | - | - | - | - | - | - | - | - | - | - | 79 | |
| NL | - | - | 120 | - | - | - | - | 2 | - | - | - | - | - | - | - | - | - | - | - | - | - | - | - | - | - | 122 | |
| PL | - | - | - | - | - | - | 866 | 30 | - | - | - | - | - | - | - | - | - | - | - | - | 402 | - | - | 66 | - | 1364 | |
| PT | - | - | - | - | - | - | - | - | 258 | - | - | - | - | - | - | - | - | - | - | - | - | - | - | - | - | 258 | |
| RO | - | - | - | 85 | - | 255 | - | - | - | - | - | 59 | - | - | - | - | - | - | - | - | - | - | - | 1 | 0 | 400 | |
| SI | 112 | - | - | - | - | - | - | - | - | - | - | 94 | 415 | - | - | - | - | - | - | - | - | - | - | - | - | 621 | |
| SK | - | - | - | - | - | 29 | - | - | - | - | - | 759 | - | - | - | - | 0 | - | - | - | - | - | - | 212 | - | 1000 | |
| DK_W | - | - | - | - | - | - | 244 | - | - | - | - | - | - | - | - | - | - | - | - | - | - | - | - | - | 409 | 653 | |
| UA_W | - | - | - | - | - | - | - | - | - | - | - | 475 | - | - | - | - | - | - | - | 84 | 5 | - | - | - | - | 564 | |
| Other III ¹ | - | - | - | 0 | - | 32 | - | 154 | 5 | 31 | 0 | - | - | - | - | - | 190 | - | 190 | 0 | - | 125 | - | - | - | 537 | |
| Sum imp | 2273 | 310 | 1368 | 85 | 3019 | 769 | 992 | 3807 | 858 | 263 | 466 | 1036 | 1340 | 4955 | 593 | 164 | 1999 | 477 | 783 | 121 | 603 | ### | 362 | 213 | 2174 | 30064 | |

Sum of physical energy flows between UCTE countries = 26095GWh

Total physical energy flows = 30064GWh

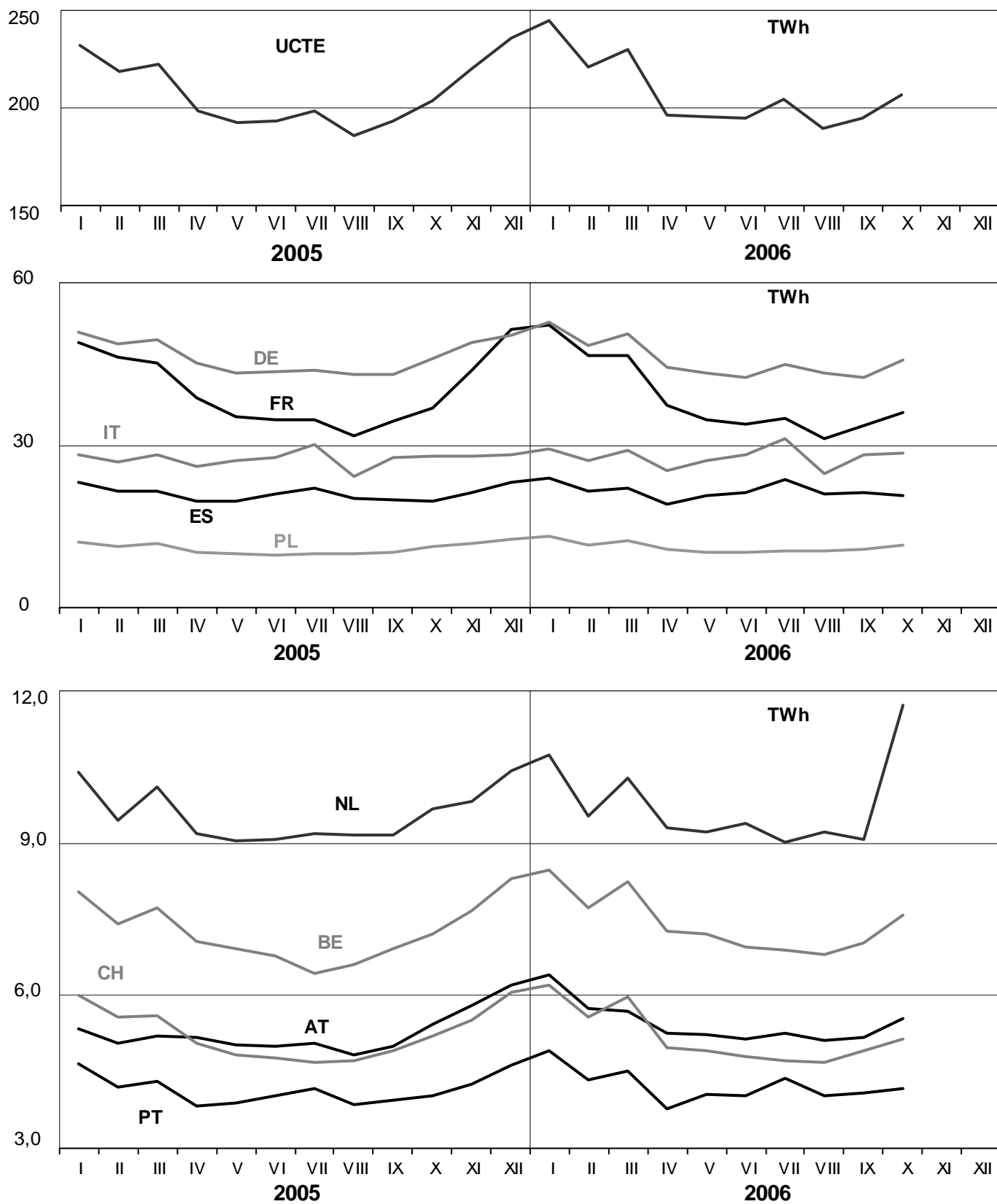
¹ Other III: Albania, Belarus, Denmark East, Great Britain, Morocco, Republic of Moldavia, Norway, Sweden, Republic of Turkey and Ukraina

These physical energy flows were measured on the cross-frontier transmission lines (≤ 110 kV) listed in table 9 of the Statistical Yearbook. These values may differ from the official statistics and the exchange balances in chapter 1.

3

Monthly consumption

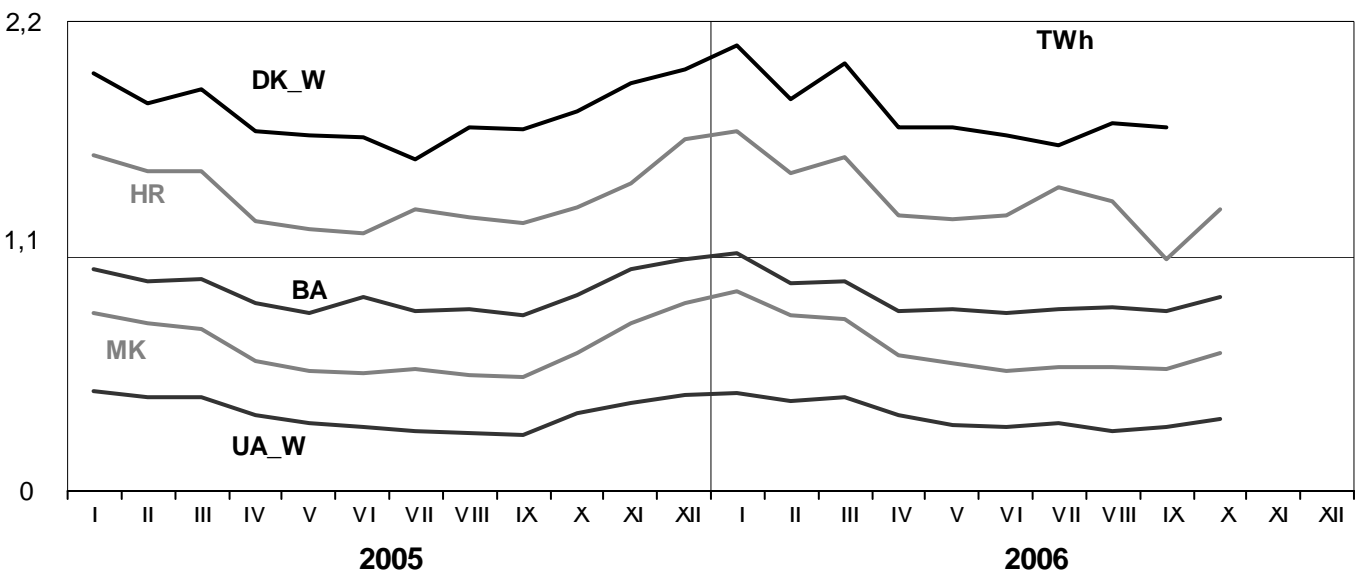
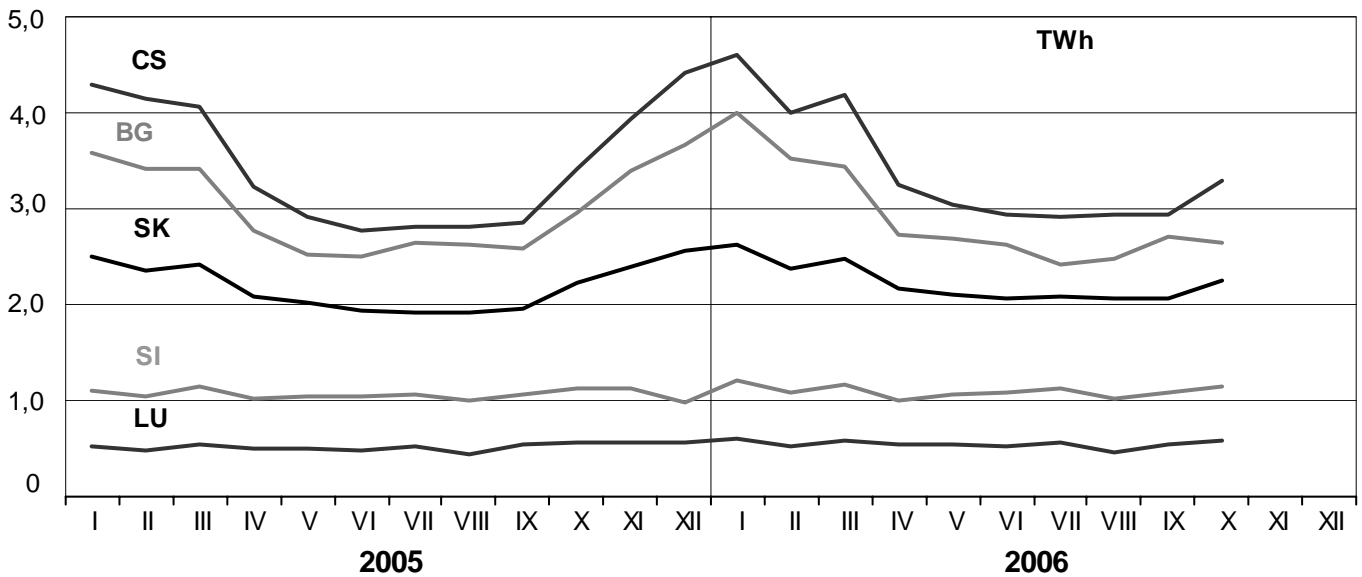
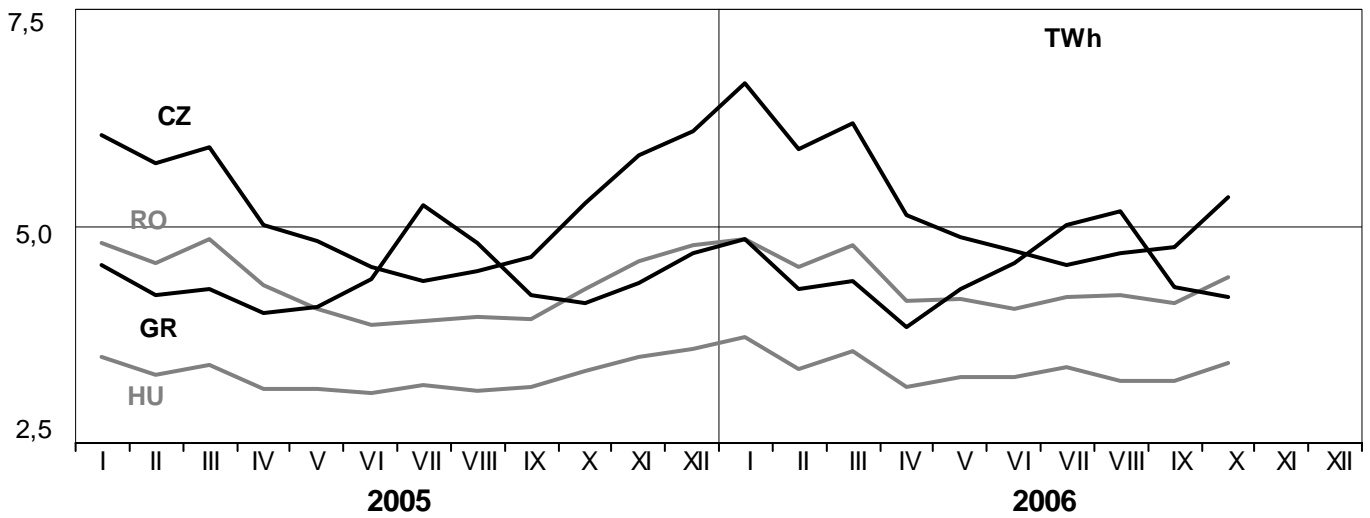
October 2006



3

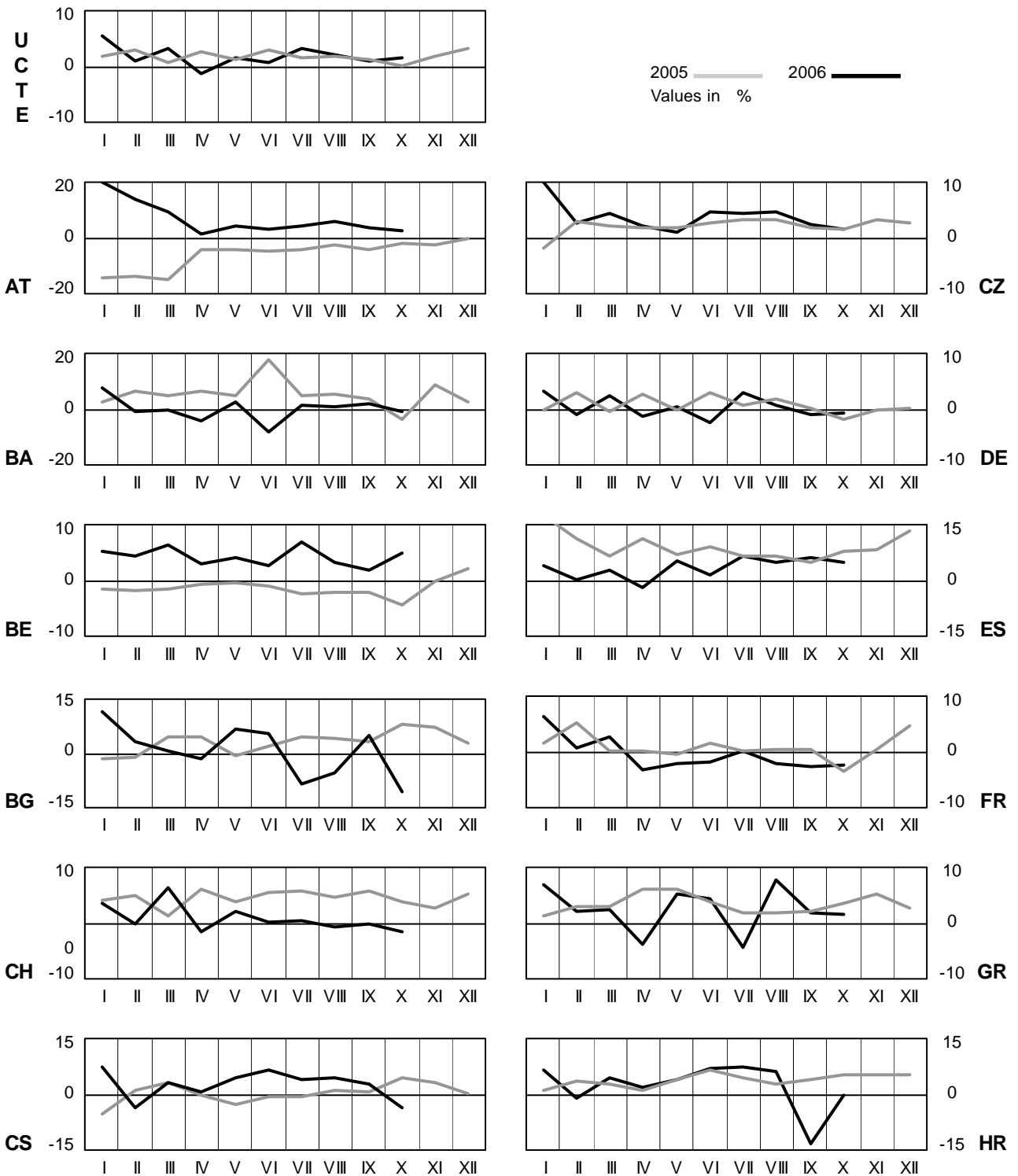
Monthly consumption

October 2006



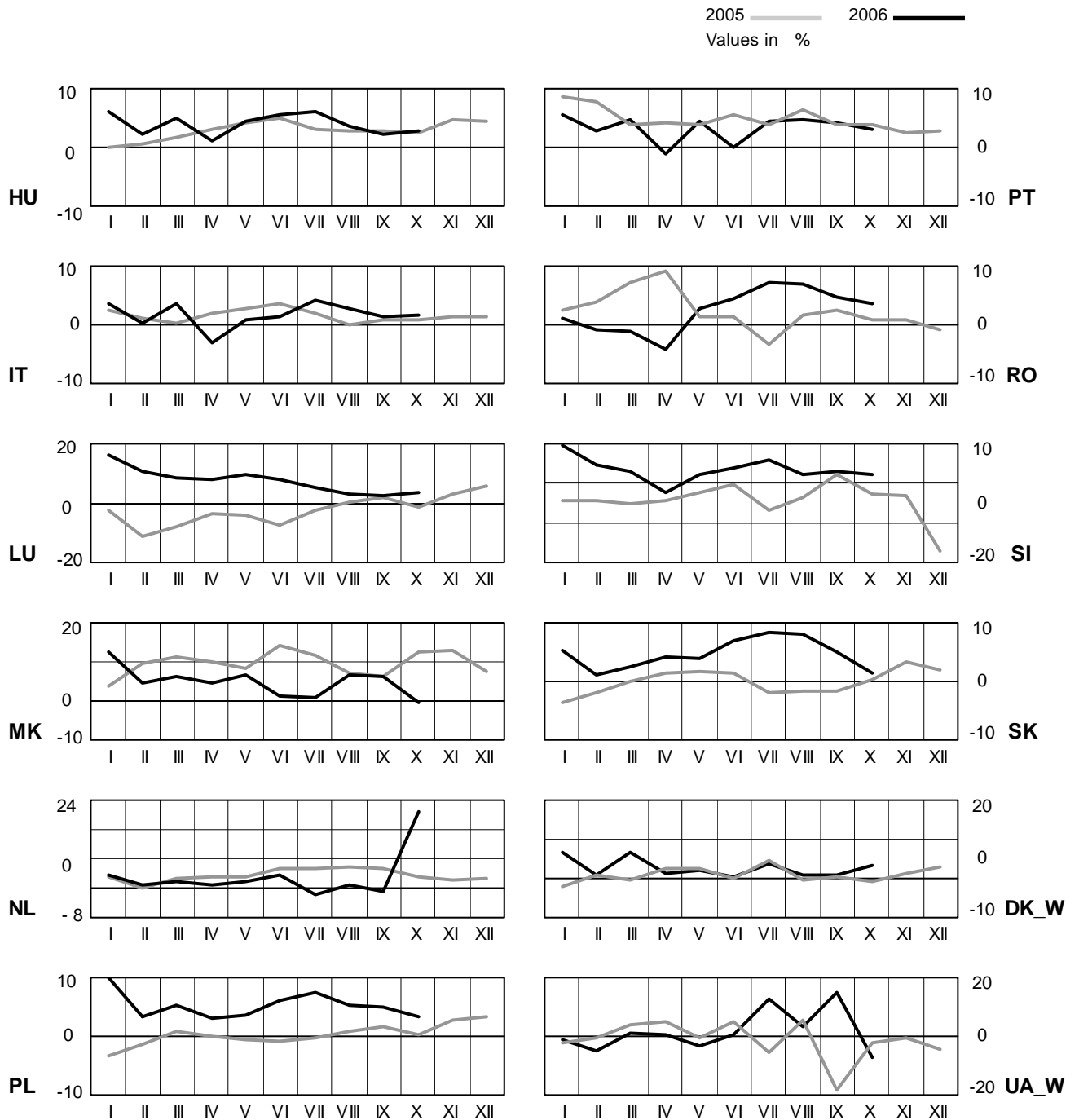
4 Monthly consumption variation

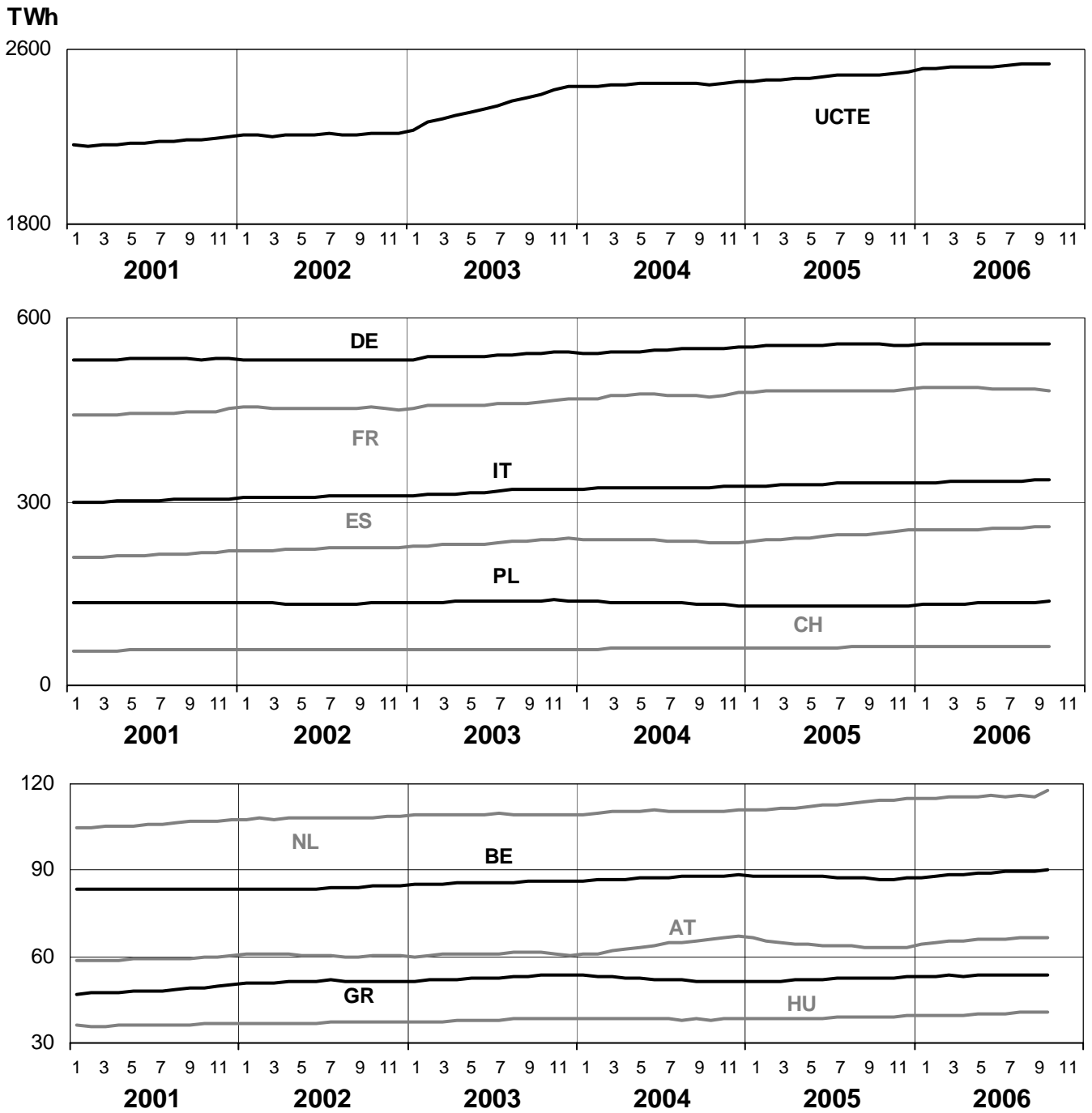
October 2006



4 Monthly consumption variation

October 2006



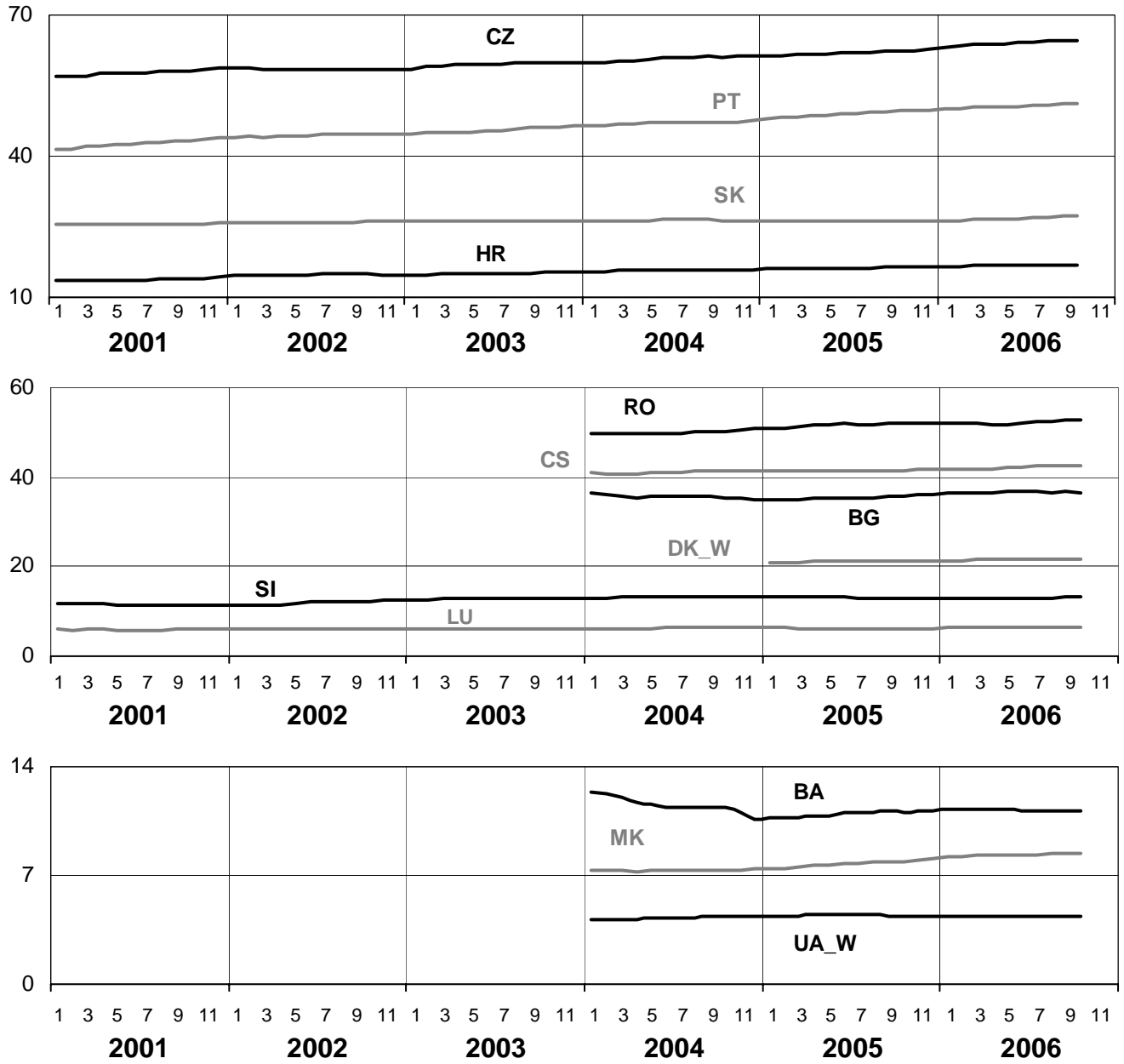


5

Consumption of the last 12 months

October 2006

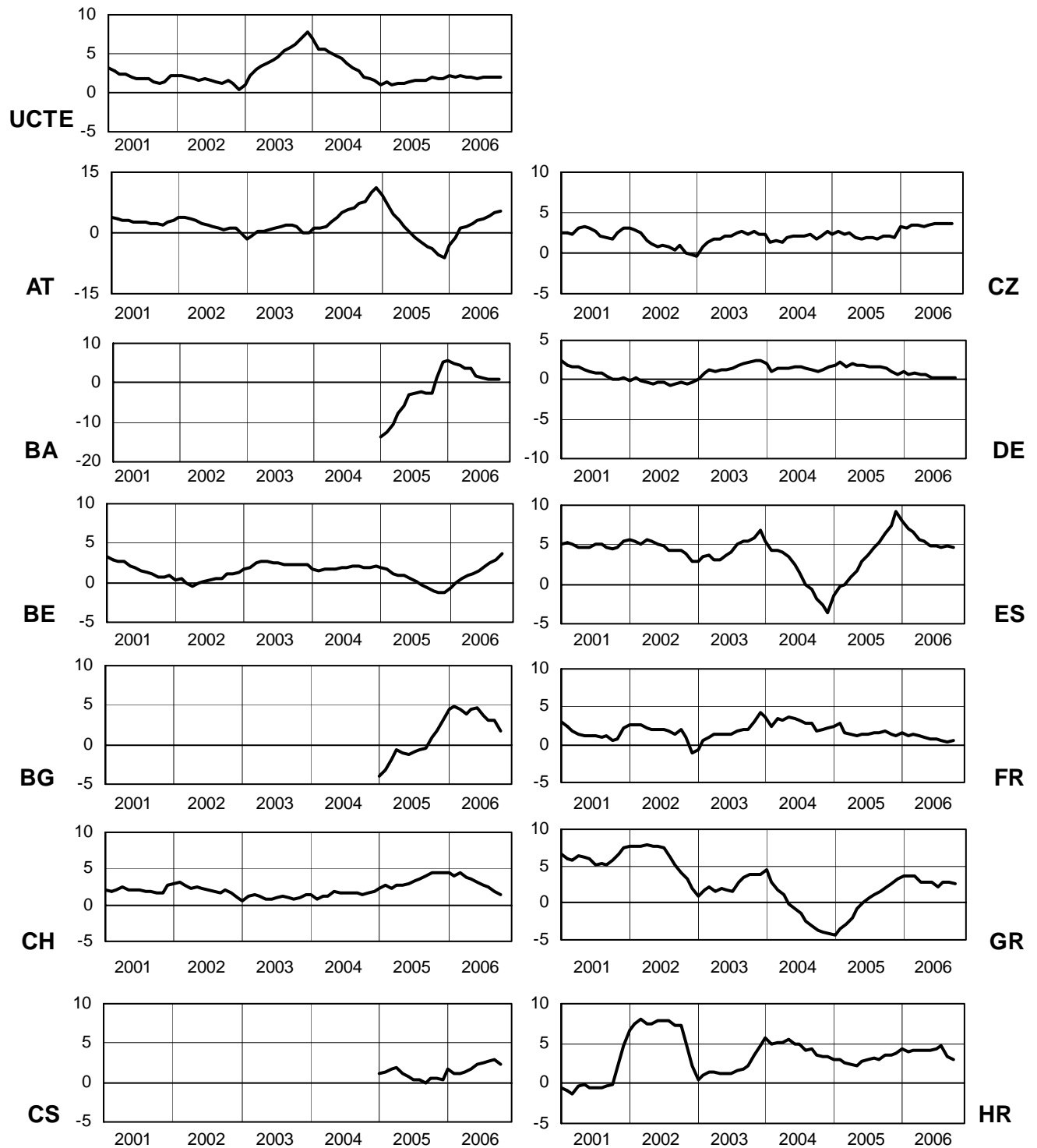
TWh



6

Variation of the last 12 months' consumption in %

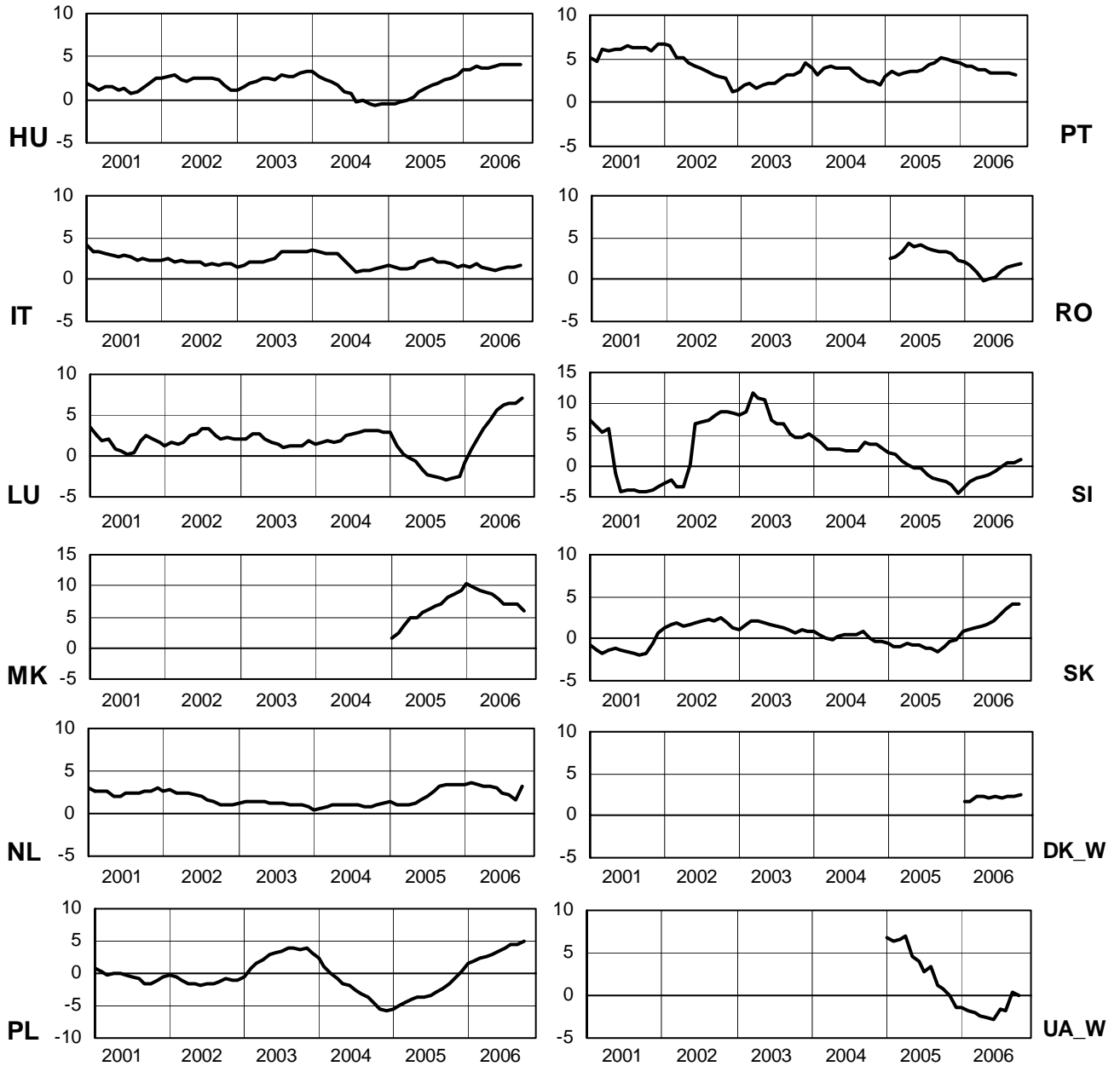
October 2006

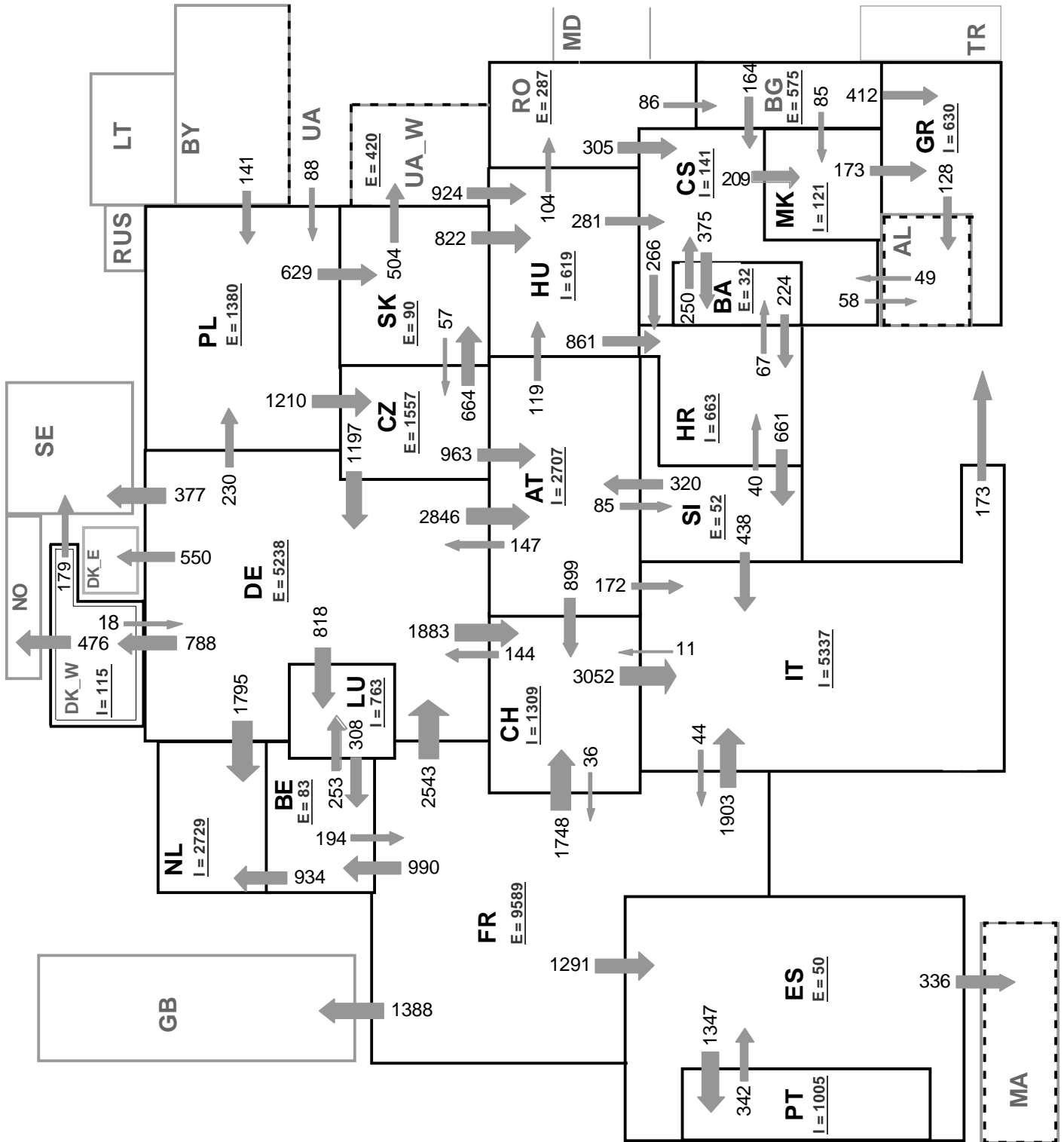


6

Variation of the last 12 months' consumption in %

October 2006





Associate member

Synchronous operation with UCTE region

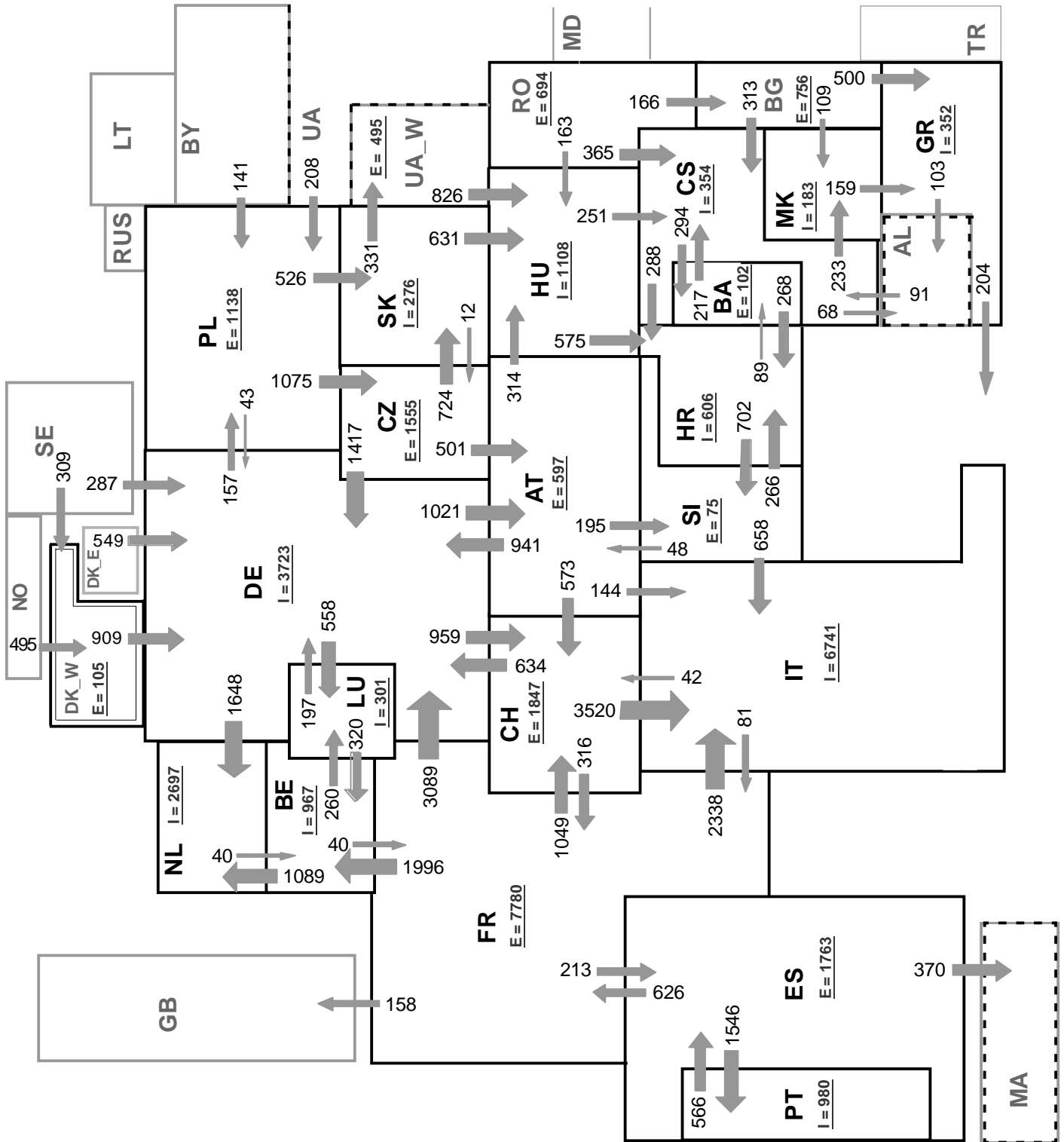
Sum of load flows in MW:

UCTE = 35170 MW

Total = 41174 MW

I = Import balance

E = Export balance



Associate member

Synchronous operation with UCTE region

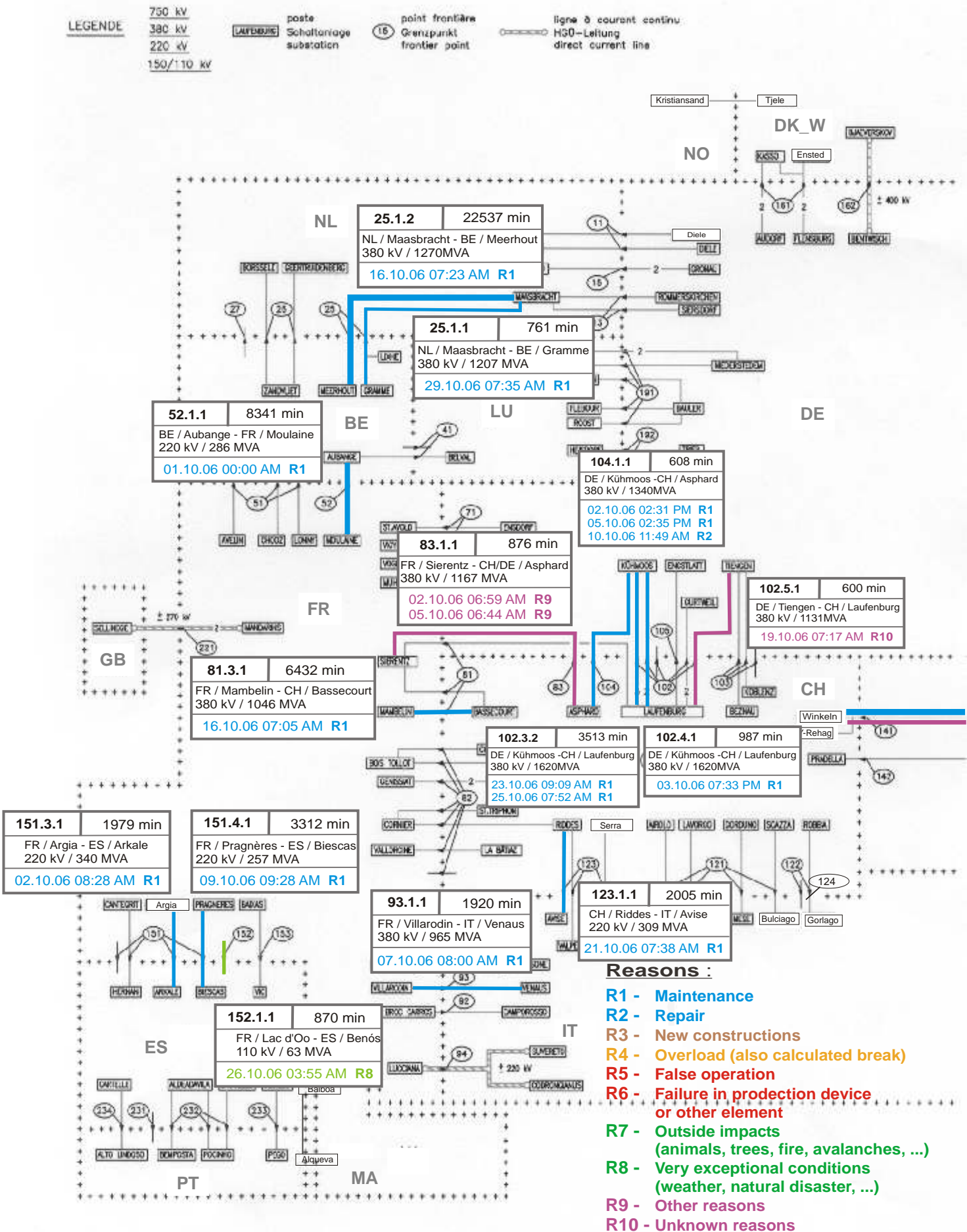
Sum of load flows in MW:

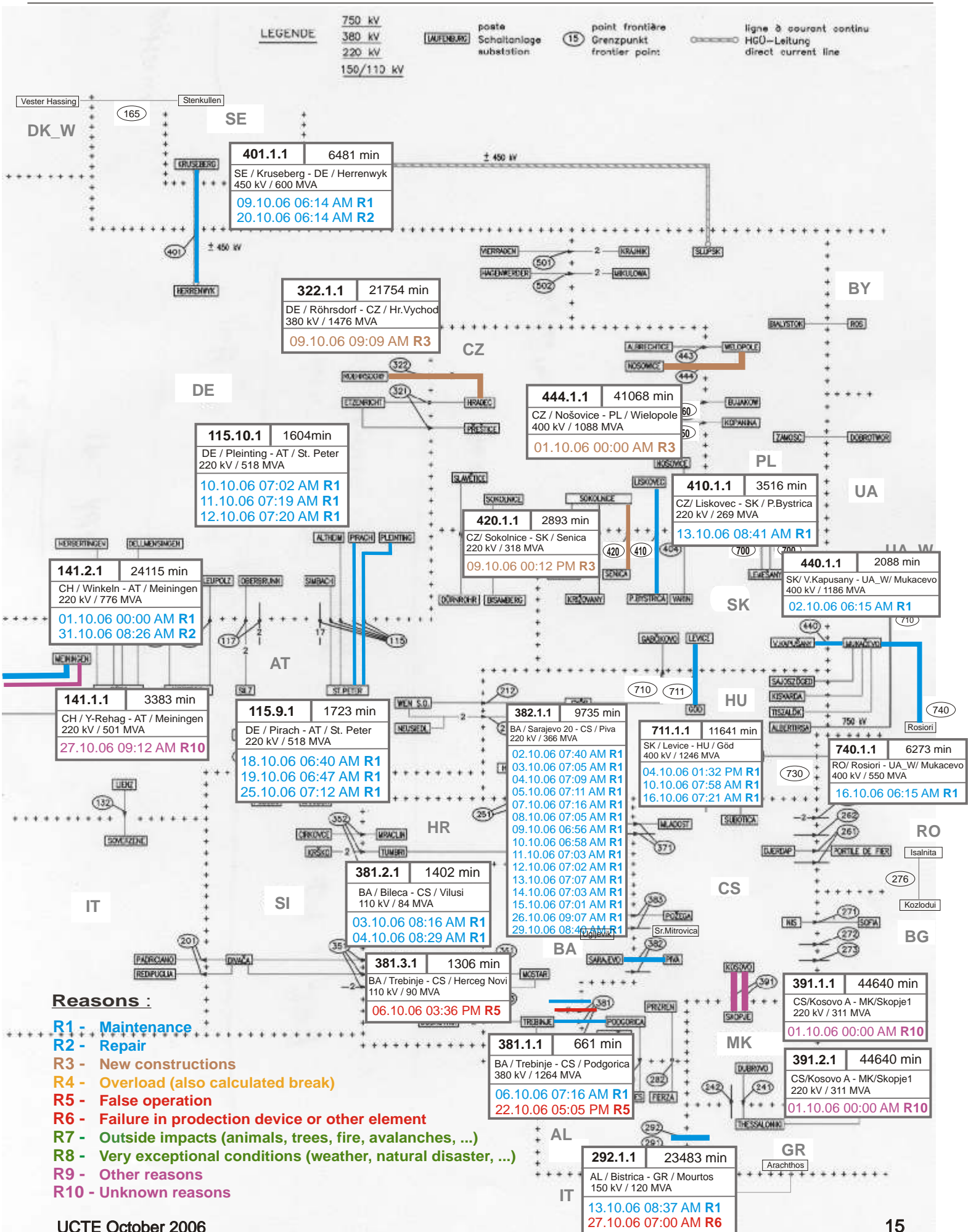
UCTE = 35269 MW

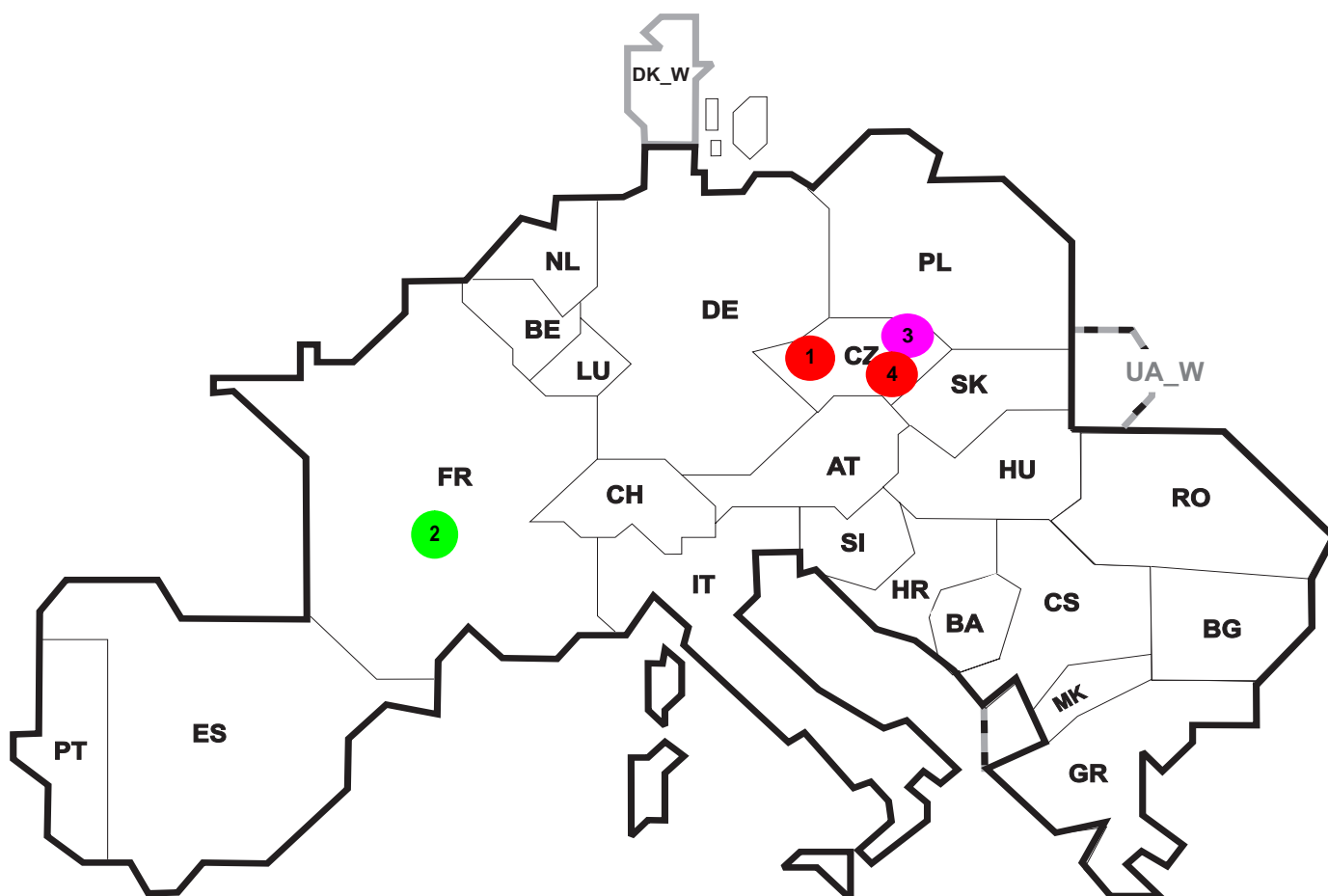
Total = 40114 MW

I = Import balance

E = Export balance







Reasons:

R4 Overload (also calculated break)

R5 False operation

R6 Failure in protection device or other element

R7 Outside impacts (animals, trees, fire, avalanches, ...)
(animals, trees, fire, avalanches, ...)

R8 Very exceptional conditions
(weather, natural disaster, ...)

R9 Other reasons

R10 Unknown reasons

| No | Country | Substation | Reason | Energy not supplied [MWh] | Total loss of power [MW] | Restoration time [min] | Equivalent time of interruption ¹ |
|----|---------|-----------------|--------|-----------------------------|----------------------------|--------------------------|--|
| 1 | CZ | Neznasov | R6 | 400 | 232 | 77 | 3,25 |
| 2 | FR | Petite Rosselle | R7 | 28 | 50 | 108 | 0,03 |
| 3 | CZ | Hradec - Vychod | R9 | 0 | 420 | 82 | 0,00 |
| 4 | CZ | Slavetice | R6 | 0 | 220 | 3 | 0,00 |

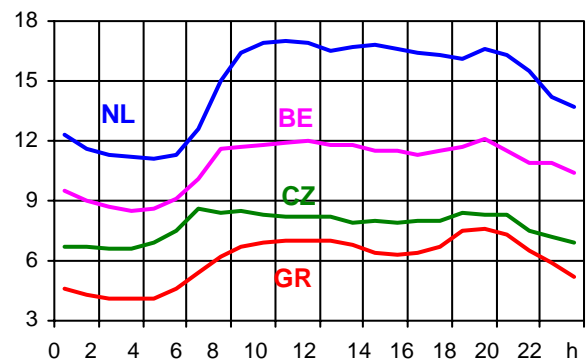
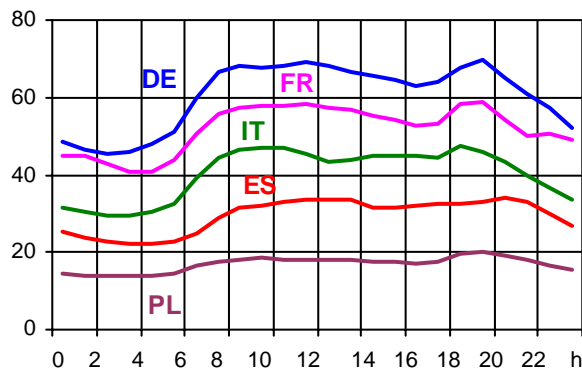
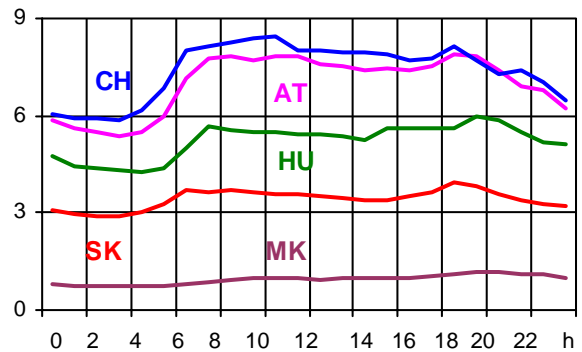
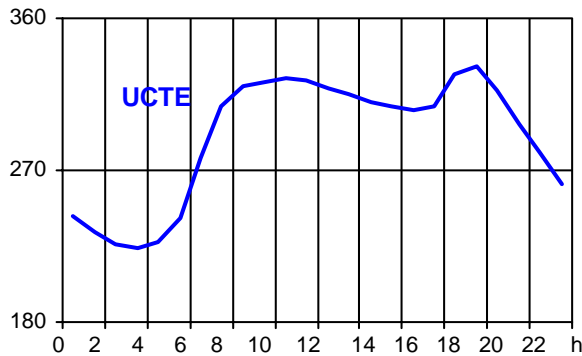
¹ (year [in min] * energy not supply) / consumption last 12 months

| Control area | Export Programs | Import Programs | Export Programs at 03:00 | Import Programs at 03:00 | Export Programs at 11:00 | Import Programs at 11:00 |
|--------------|-----------------|-----------------|--------------------------|--------------------------|--------------------------|--------------------------|
| AT | 689685 | 1604026 | 2795 | 859 | 696 | 908 |
| BA | 243904 | 113412 | 188 | 100 | 252 | 100 |
| BE | 706608 | 1322382 | 1023 | 799 | 834 | 1754 |
| BG | n.a. | n.a. | n.a. | n.a. | n.a. | n.a. |
| CH | 2726102 | 2735764 | 2417 | 3700 | 4706 | 2888 |
| CS | 284619 | 478259 | 387 | 614 | 390 | 714 |
| CZ | 1766685 | 637866 | 2436 | 797 | 2499 | 877 |
| DE | 3155499 | 2171654 | 5182 | 3292 | 2368 | 4232 |
| ES | 1138484 | 902301 | 1361 | 1300 | 2250 | 430 |
| FR | 8323922 | 1121241 | 11069 | 1458 | 9607 | 1667 |
| GR | 65961 | 361417 | 0 | 619 | 200 | 536 |
| HR | 17136 | 482873 | 3 | 650 | 92 | 536 |
| HU | 501860 | 1165677 | 830 | 1438 | 606 | 1725 |
| IT | 110523 | 4954693 | 228 | 5565 | 123 | 6864 |
| MK | 0 | 84500 | 43 | 166 | 49 | 226 |
| NL | 313306 | 2186472 | 184 | 2899 | 354 | 3048 |
| PL | 990931 | 114013 | 1485 | 135 | 1356 | 214 |
| PT | 204104 | 740722 | 0 | 1022 | 18 | 1018 |
| RO | 396129 | 114416 | 449 | 158 | 782 | 76 |
| SI | 599564 | 580701 | 761 | 739 | 813 | 733 |
| SK | 608469 | 582120 | 851 | 697 | 848 | 1034 |
| DK_W | 368251 | 635294 | 800 | 862 | 1120 | 815 |
| UA_W | 346382 | 0 | 422 | 0 | 499 | 0 |

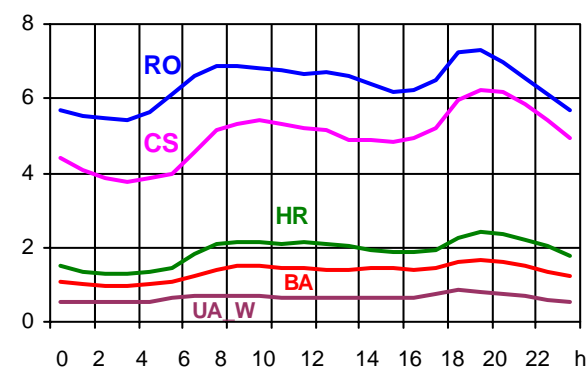
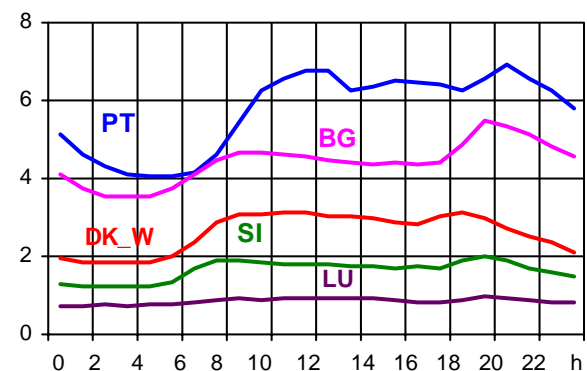
- Control areas can differ from national borders (i.e. German block which includes parts of AT, LU and DK).
- Values are calculated on an hourly base (MWh).
- This values are not the provisional values entered in the VULCANUS system, but the definitive values after an eventual correction during the actual date.
- Export Programs: Sum of all positive values of every hour of every border
- Import Programs: Sum of all negative values of every hour of every border
- Export Programs at 03:00: Sum of all positive values the third Wednesday from 02:00 to 03:00 a.m.
- Import Programs at 03:00: Sum of all negative values the third Wednesday from 02:00 to 03:00 a.m.
- Export Programs at 11:00: Sum of all positive values the third Wednesday from 10:00 to 11:00 a.m.
- Import Programs at 11:00: Sum of all negative values the third Wednesday from 10:00 to 11:00 a.m.

Consumption hourly load curves on 18.10.2006

Values in GW



| | Highest load | | Load representativity | Parallel power ² |
|-----------------|---------------|--------------------|-----------------------|-----------------------------|
| | MW | var.% ¹ | | |
| AT | 7897 | 0,3 | 100 | 7908 |
| BA | 1679 | 3,0 | 100 | 1564 |
| BE ³ | 12092 | 4,0 | 100 | 10963 |
| BG | 5470 | 0,1 | 100 | 5388 |
| CH | 8440 | -6,0 | 100 | 10515 |
| CS | 6211 | -0,2 | 100 | 4972 |
| CZ | 8587 | -0,9 | 100 | 10049 |
| DE | 76386 | -3,1 | 91 | 74900 |
| ES | 35016 | 5,5 | 98 | 34682 |
| FR | 58675 | -2,5 | 100 | 65785 |
| GR | 7590 | 2,2 | 100 | 6621 |
| HR | 2441 | -0,1 | 100 | 1832 |
| HU | 5972 | 1,0 | 100 | 4338 |
| IT | 47586 | -1,5 | 100 | 40049 |
| LU | 951 | 19,3 | 100 | 945 |
| MK | 1186 | -2,8 | 100 | 790 |
| NL | 16997 | 12,2 | 100 | 14289 |
| PL ⁴ | 19987 | 1,5 | 100 | 22023 |
| PT | 7191 | 3,2 | 96 | 5602 |
| RO | 7323 | 1,8 | 100 | 7437 |
| SI | 2089 | 4,6 | 95 | 1877 |
| SK | 3930 | 2,4 | 100 | 3307 |
| UCTE | 331235 | 0,7 | | 335836 |
| DK_W | 3121 | 1,9 | 100 | 2914 |
| UA_W | 834 | -2,7 | 100 | 1170 |



¹ Variation as compared to corresponding month of the previous year
² Power produced in parallel operation (including autoproduction)
³ The reported figures are best estimates based on actual measurements and extrapolations.
⁴ Average value of each hour



Contact

Boulevard Saint-Michel, 15
B-1040 Brussels – Belgium
Tel +32 2 741 69 40 – Fax +32 2 741 69 49

info@ucte.org
www.ucte.org