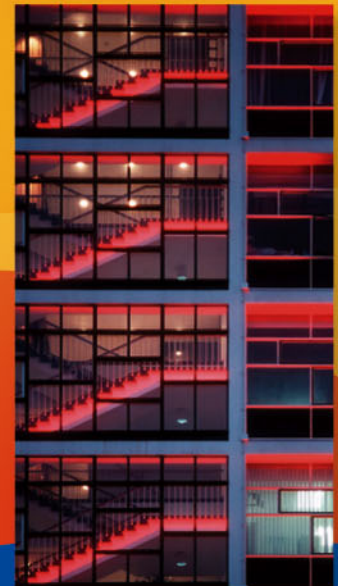
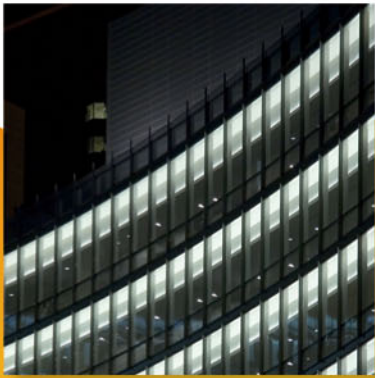


UCTE



September 2006

Monthly provisional values
union for the co-ordination of transmission of electricity

Table of contents		Page
1	Electricity supply situation of the countries	2
2	Physical energy flows	3
3	Monthly consumption	4
4	Monthly consumption variation	6
5	Consumption of the last 12 months	8
6	Variation of the last 12 months' consumption	10
7	Load flows (night)	12
8	Load flows (day)	13
9	Unavailability of international tie lines (major events)	14
10	Network reliability (major events)	16
11	Scheduled exchanges	17
12	Load on the 3 rd Wednesday	18

General remarks and abbreviations used in the tables

- All values of production and consumption in chapter 1, 3&4, 5&6 and 12 are calculated to represent 100% of the national values.
- DK_W Denmark West represents the Western part of Denmark synchronously interconnected with UCTE (Jutland and Funen).
- UA_W Ukraine West represents the so-called Burshtyn Island synchronously interconnected with UCTE.
- CET Central European Time
- The Bulgarian values of production and consumption are gross values.

Countries	Net production in GWh							Exchange balance in GWh	Pump in GWh	Consumption in GWh			
	Therm. nuclear	Therm conv.	Hydro prod	Other renew.	Of which wind	Not identify	Total			monthly	var. [%]	last 12 months	var. [%]
AT	0	1243	2810	0	0	598	4651 ¹	801	264	5188	3,5	66567	4,9
BA	0	613	358	0	0	0	971	-131	0	840	1,9	11209	0,9
BE ²	3431	2617	118	200	20	0	6366 ¹	818	141	7043	1,7	89838	2,9
BG	1343	1793	212	0	0	0	3348	-601	39	2708	5,2	36661	3,2
CH	2234	180	3121	83	0	0	5618 ¹	-477	227	4914	0,0	63631	2,0
CS	0	2189	693	0	0	0	2882 ¹	99	48	2933	2,9	42566	2,9
CZ	1732	4014	233	14	6	0	5993 ¹	-1149	82	4762	2,3	64588	3,7
DE	13273	25245	1959	3348	2173	0	43825 ¹	-407	812	42606	-1,1	558363	0,2
ES	4323	13863	1511	1803	1442	0	21500 ¹	-317	489	21216	6,0	258895	4,8
FR	33831	2579	4223	396	152	0	41029	-6958	524	33547	-2,7	482879	0,4
GR	0	3535	328	111	101	0	3974 ¹	375	63	4286	1,7	53834	2,7
HR	0	312	366	3	2	0	681 ¹	420	12	1089	-13,2	16881	3,3
HU ³	961	1600	0	0	0	0	2561 ¹	651	0	3212	2,4	40498	4,1
IT	0	20799	3447	798	270	0	25044 ¹	3892	704	28232	1,4	334676	1,6
LU	0	270	70	9	3	0	349	287	92	544	2,3	6584	6,5
MK	0	330	71	0	0	0	401 ¹	169	0	570	6,1	8407	7,1
NL	314	6418	0	542	145	0	7274 ¹	1989	0	9263	1,0	115809	1,7
PL	0	11547	213	32	23	0	11792 ¹	-959	109	10724	5,0	135851	4,6
PT	0	2569	380	363	204	0	3312 ¹	711	86	4100	4,1	51095	3,3
RO	124	2542	1701	0	0	0	4367 ¹	-248	4	4115	4,7	52695	1,6
SI	495	351	230	0	0	0	1076	17	0	1093	3,1	13112	0,6
SK	1150	388	248	1	0	201	1988 ¹	86	17	2057	4,9	27209	4,1
UCTE	63211	104997	22292	7703	4541	799	199002¹	-932	3713	195042	1,0	2531848	1,9
DK_W	0	1520	1	476	387	0	1997 ¹	-289	0	1708	0,8	21708	2,2
UA_W	0	654	11	0	0	0	665 ¹	-366	0	299	15,0	4417	0,5

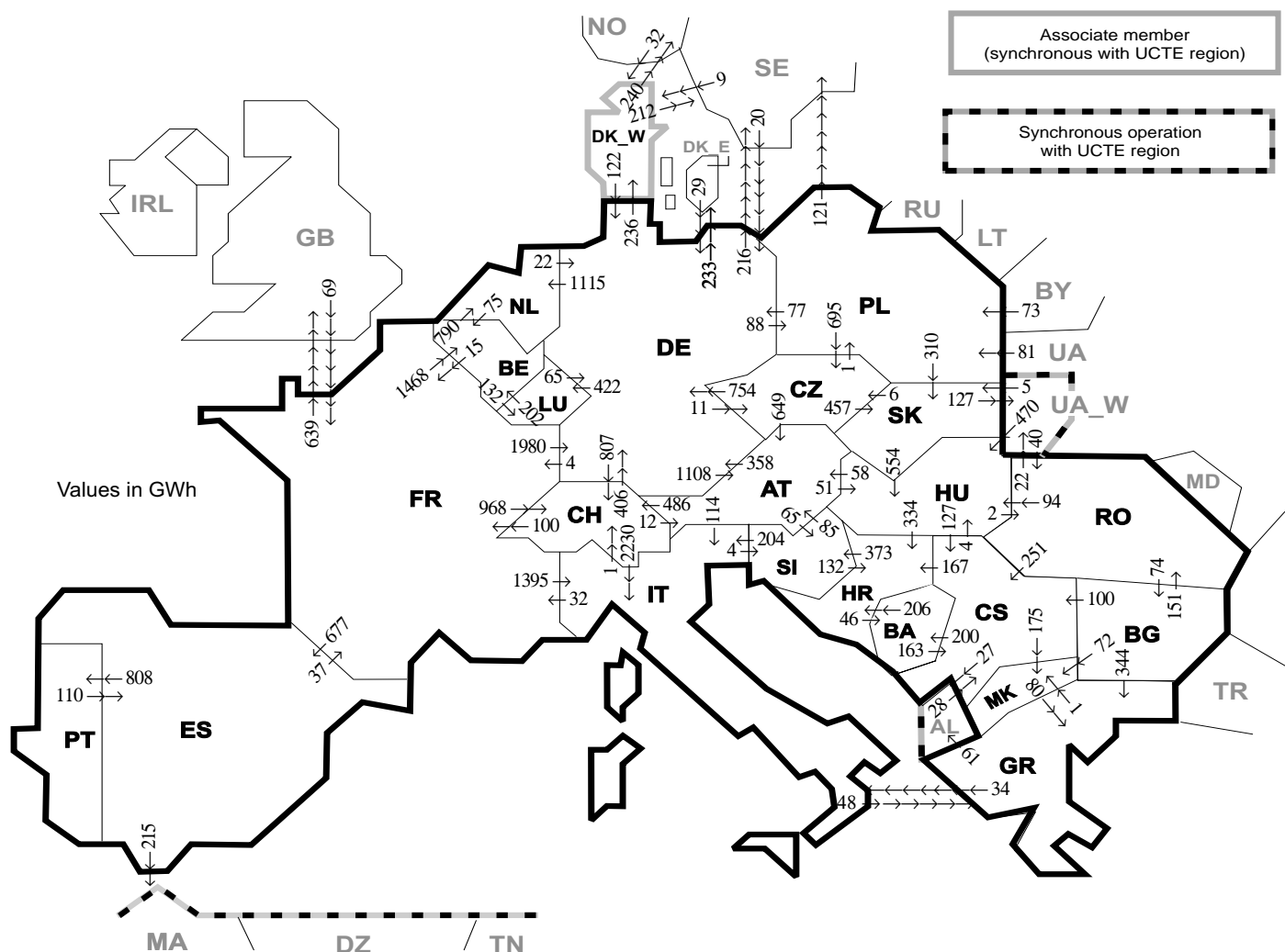
¹ Including deliveries from industry

² The reported figures are best estimates based on actual measurements and extrapolations.

³ Data on hydro, other renewable, not clearly identifiable production are not yet available.

All representativities of the national production and consumption values used to calculate values at a representativity of 100% as stated in the table above

Countries	AT	BA	BE	BG	CH	CS	CZ	DE	ES	FR	GR	HR ³	HU	IT	LU	MK	NL	PL	PT	RO	SI	SK	DK_W	UA_W
Production																								
Therm.nuclear	100	100	100	100	100	100	100	100	100	100	100	100	100	100	100	100	100	100	100	100	100	100	100	100
Thermal conv.	100	100	100	100	100	100	100	100	97	100	100	100	100	100	100	100	100	100	94	100	100	100	100	100
Hydro prod	100	100	100	100	100	100	100	100	100	100	100	100	100	100	100	100	100	100	100	100	100	100	100	100
Other renew.	100	100	100	100	100	100	100	100	95	100	100	100	100	100	100	100	100	100	100	100	100	100	100	100
Not identify	100	100	100	100	100	100	100	100	100	100	100	100	100	100	100	100	100	100	100	100	100	100	100	100
Consumption	100	100	100	100	100	100	100	100	98	100	100	100	100	100	100	100	100	100	96	100	95	100	100	100



Exporting countries	Importing countries																				Sum export						
	AT	BA	BE	BG	CH	CS	CZ	DE	ES	FR	GR	HR	HU	IT	LU	MK	NL	PL	PT	RO		SI	SK	DK_W	UA_W	Other III ¹	
AT	-	-	-	-	486	-	0	358	-	-	-	51	114	-	-	-	-	-	-	-	65	-	-	-	-	-	1074
BA	-	-	-	-	-	163	-	-	-	-	-	206	-	-	-	-	-	-	-	-	-	-	-	-	-	-	369
BE	-	-	-	-	-	-	-	-	-	15	-	-	-	-	132	-	790	-	-	-	-	-	-	-	-	-	937
BG	-	-	-	-	-	100	-	-	-	-	344	-	-	-	-	72	-	-	-	-	151	-	-	-	-	0	667
CH	12	-	-	-	-	-	-	406	-	100	-	-	2230	-	-	-	-	-	-	-	-	-	-	-	-	2748	
CS	-	200	-	0	-	-	-	-	-	-	-	167	4	-	-	175	-	-	-	0	-	-	-	-	-	27	573
CZ	649	-	-	-	-	-	-	754	-	-	-	-	-	-	-	-	-	1	-	-	-	457	-	-	-	1861	
DE	1108	-	-	-	807	-	11	-	-	4	-	-	-	422	-	1115	88	-	-	-	-	-	236	-	449	4240	
ES	-	-	-	-	-	-	-	-	-	37	-	-	-	-	-	-	-	-	808	-	-	-	-	-	215	1060	
FR	-	-	1468	-	968	-	-	1980	677	-	-	-	1395	-	-	-	-	-	-	-	-	-	-	-	639	7127	
GR	-	-	-	0	-	-	-	-	-	-	34	-	-	-	-	1	-	-	-	-	-	-	-	-	-	61	96
HR	-	46	-	-	-	0	-	-	-	-	-	0	-	-	-	-	-	-	-	-	-	373	-	-	-	419	
HU	58	-	-	-	-	127	-	-	-	-	-	334	-	-	-	-	-	-	-	-	2	0	-	0	-	521	
IT	0	-	-	-	1	-	-	-	-	32	48	-	-	-	-	-	-	-	-	-	-	4	-	-	-	85	
LU	-	-	202	-	-	-	-	65	-	-	-	80	-	-	-	-	-	-	-	-	-	-	-	-	-	267	
MK	-	-	-	0	-	0	-	-	-	-	-	-	-	-	-	-	-	-	-	-	-	-	-	-	-	80	
NL	-	-	75	-	-	-	-	22	-	-	-	-	-	-	-	-	-	-	-	-	-	-	-	-	-	97	
PL	-	-	-	-	-	-	695	77	-	-	-	-	-	-	-	-	-	-	-	-	-	-	-	-	-	1203	
PT	-	-	-	-	-	-	-	-	110	-	-	-	-	-	-	-	-	-	-	-	-	-	-	-	-	110	
RO	-	-	-	74	-	251	-	-	-	-	-	-	94	-	-	-	-	-	-	-	-	-	-	22	0	441	
SI	85	-	-	-	-	-	-	-	-	-	-	132	204	-	-	-	-	-	-	-	-	-	-	-	-	421	
SK	-	-	-	-	-	6	-	-	-	-	-	554	-	-	-	-	0	-	-	-	-	-	-	127	-	687	
DK_W	-	-	-	-	-	-	-	122	-	-	-	-	-	-	-	-	-	-	-	-	-	-	-	-	452	574	
UA_W	-	-	-	-	-	-	-	-	-	-	-	470	-	-	-	-	-	-	-	-	40	5	-	-	-	515	
Other III ¹	-	-	-	0	-	28	-	49	0	69	0	-	-	-	-	-	-	154	-	0	-	-	41	-	-	341	
Sum imp	1912	246	1745	74	2262	669	712	3833	787	257	472	839	1173	3977	554	248	1905	243	808	193	442	772	277	149	1964	26513	

Sum of physical energy flows between UCTE countries = 23186GWh

Total physical energy flows = 26513GWh

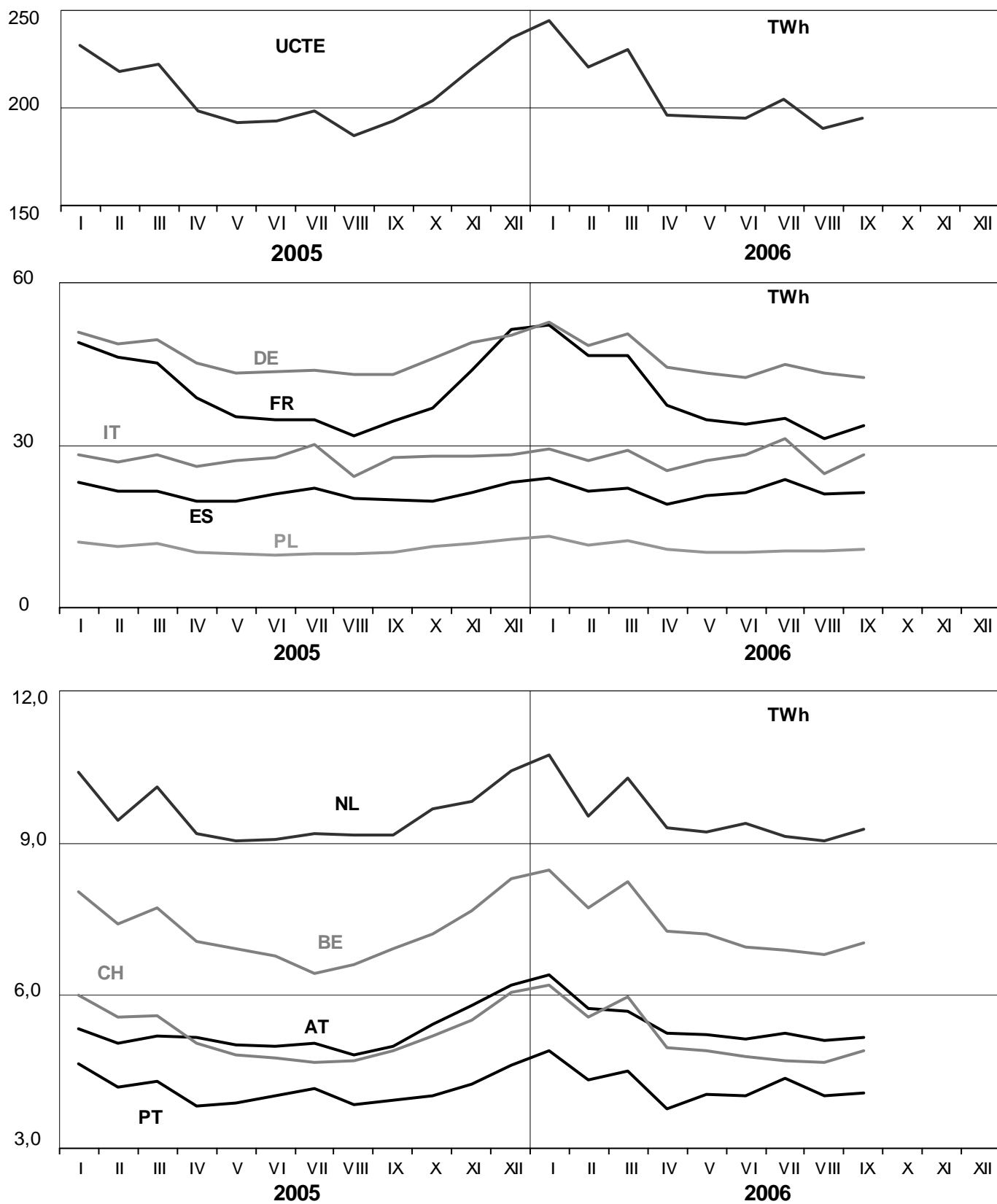
¹ Other III: Albania, Belarus, Denmark East, Great Britain, Morocco, Republic of Moldavia, Norway, Sweden, Republic of Turkey and Ukraina

These physical energy flows were measured on the cross-frontier transmission lines (≤ 110 kV) listed in table 9 of the Statistical Yearbook. These values may differ from the official statistics and the exchange balances in chapter 1.

3

Monthly consumption

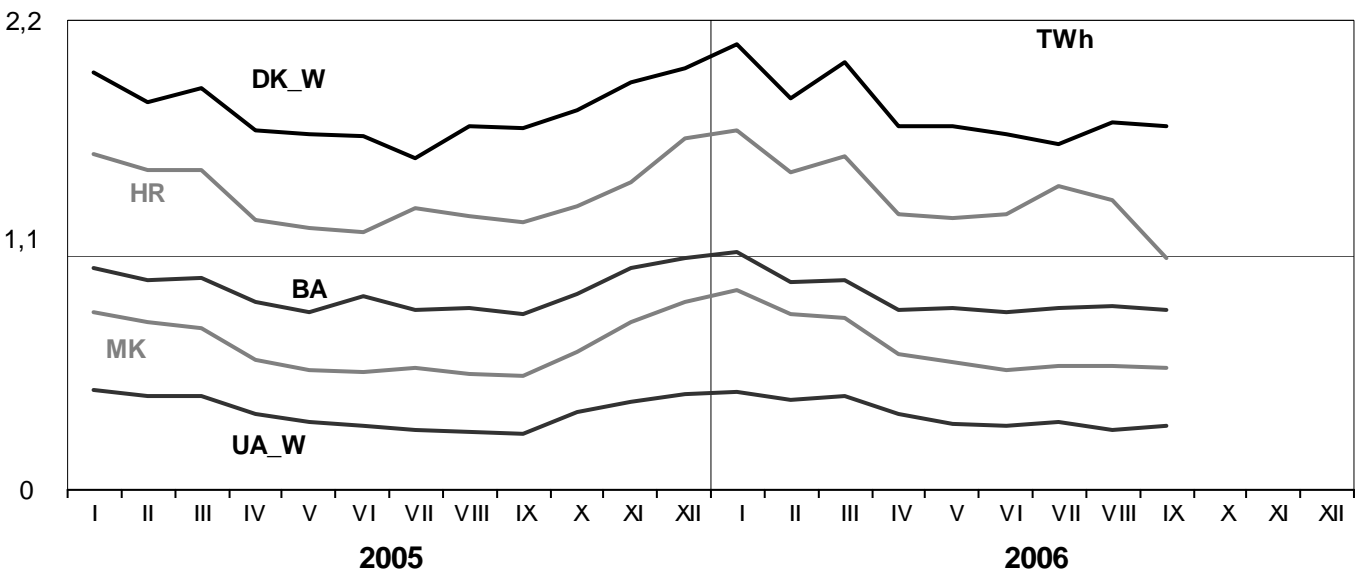
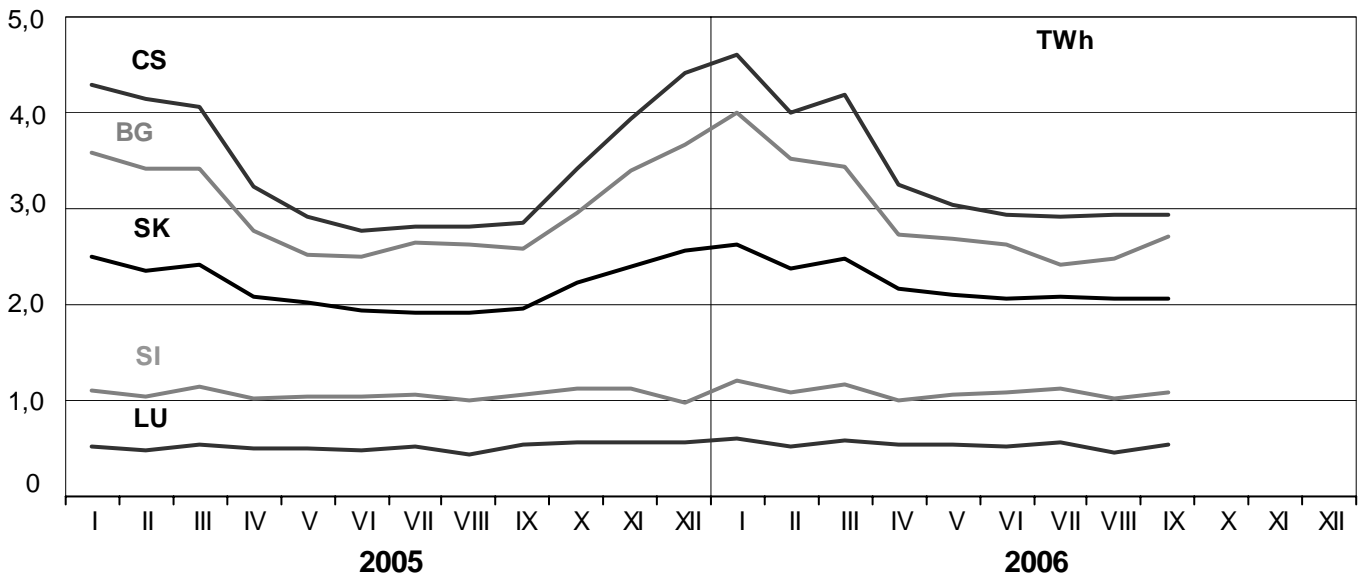
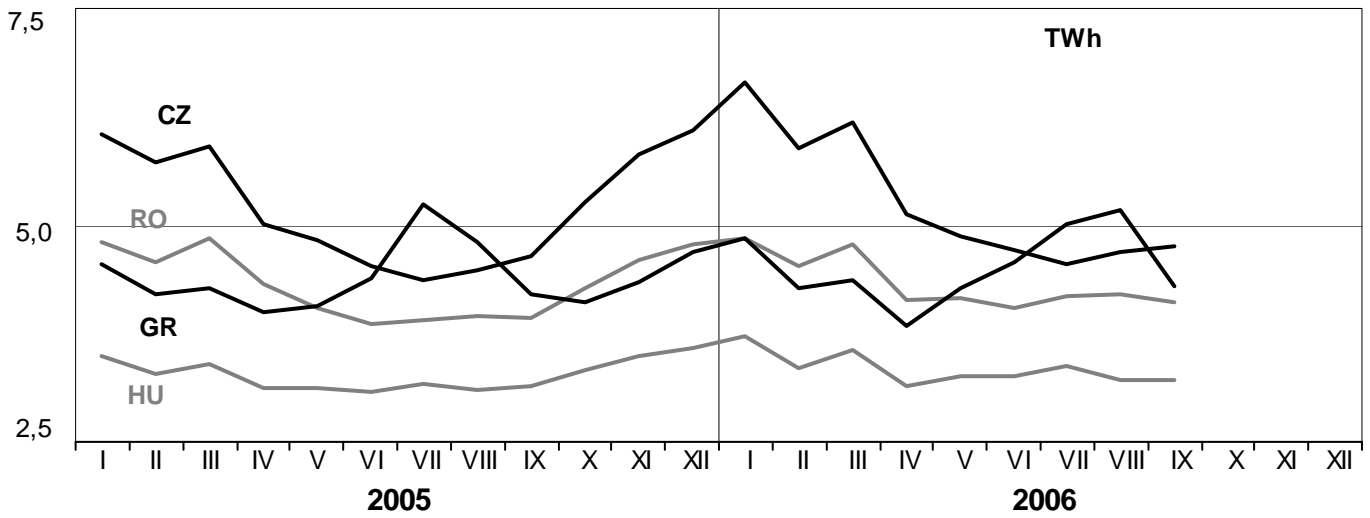
September 2006



3

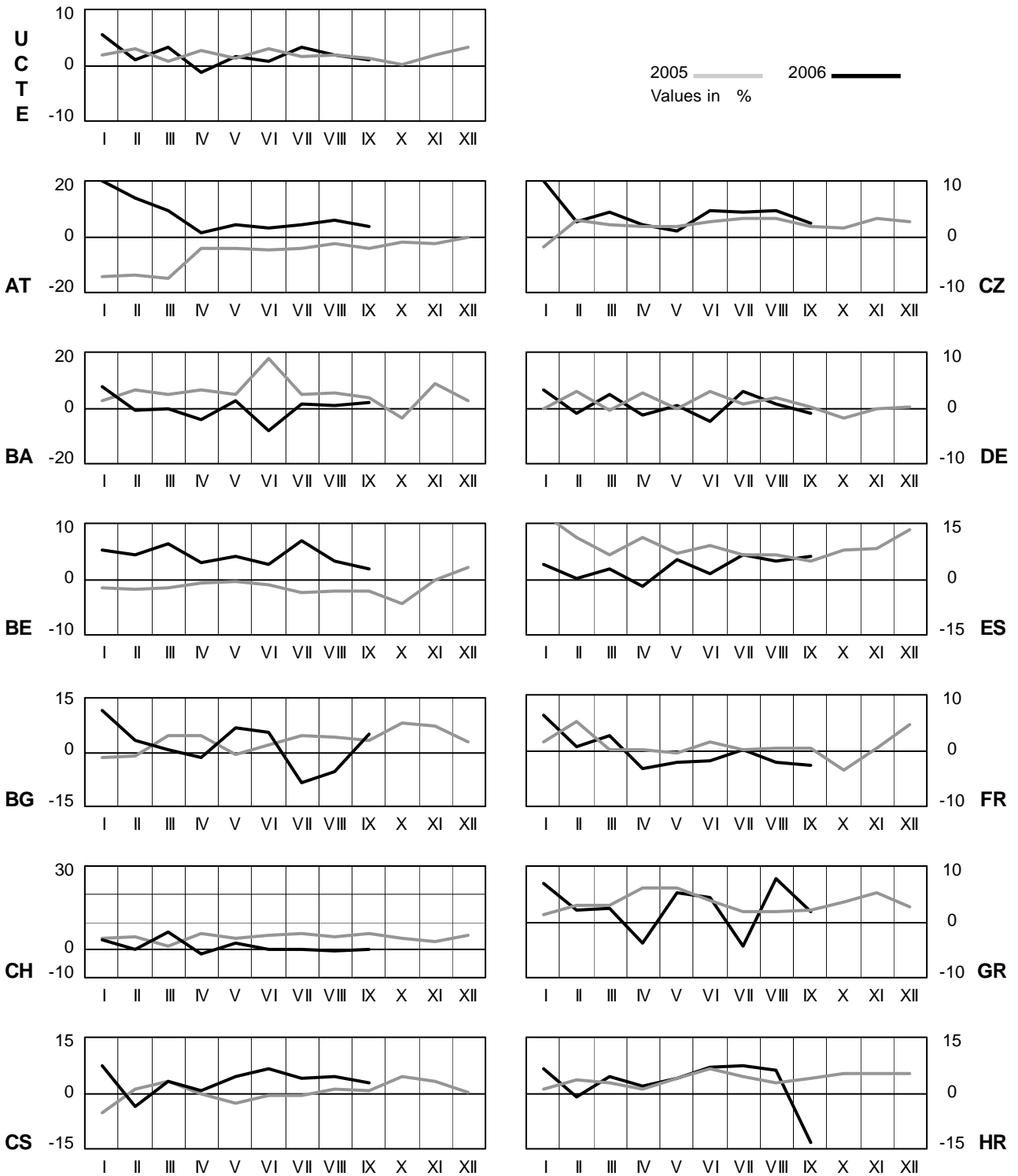
Monthly consumption

September 2006



4 Monthly consumption variation

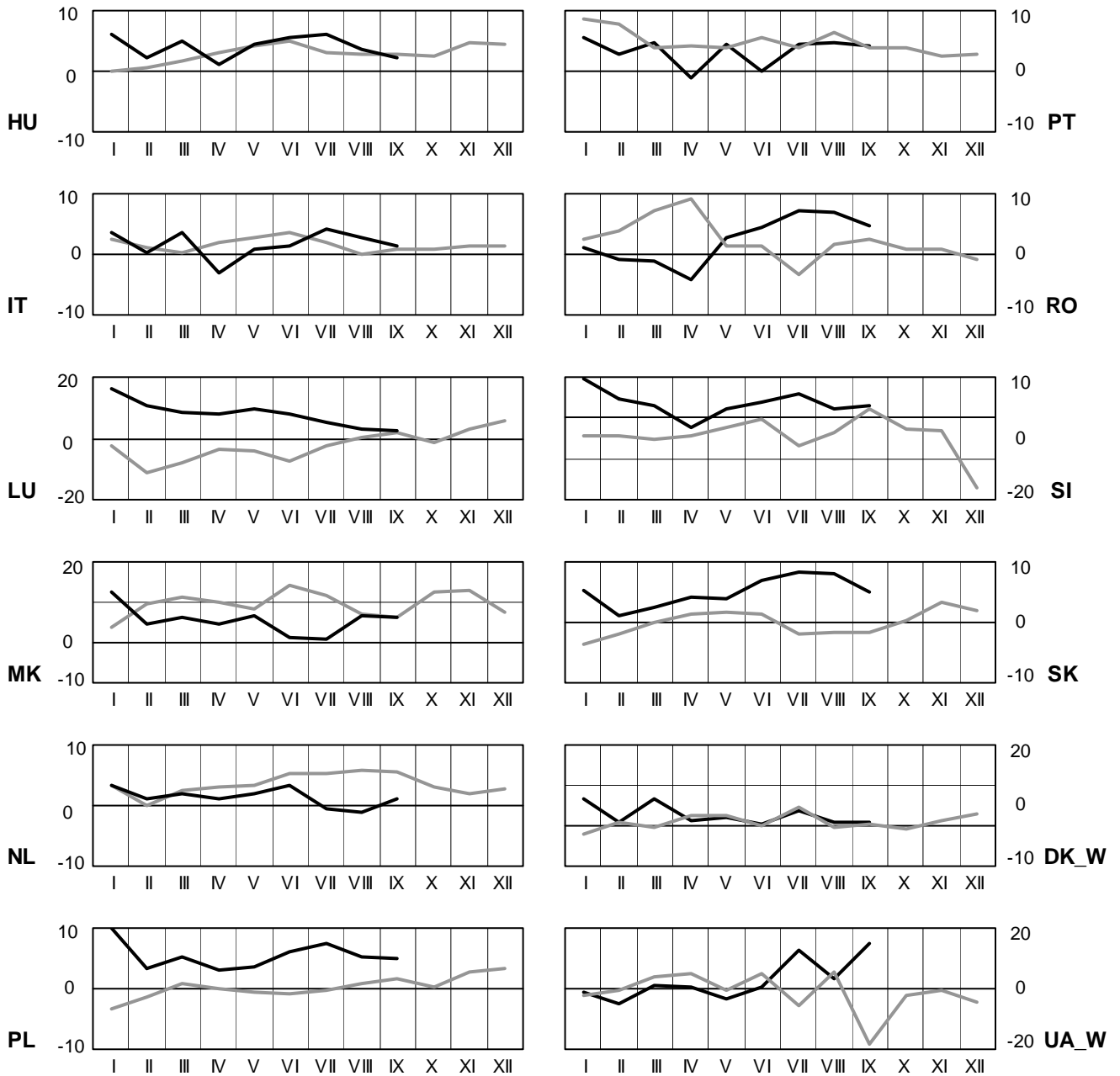
September 2006

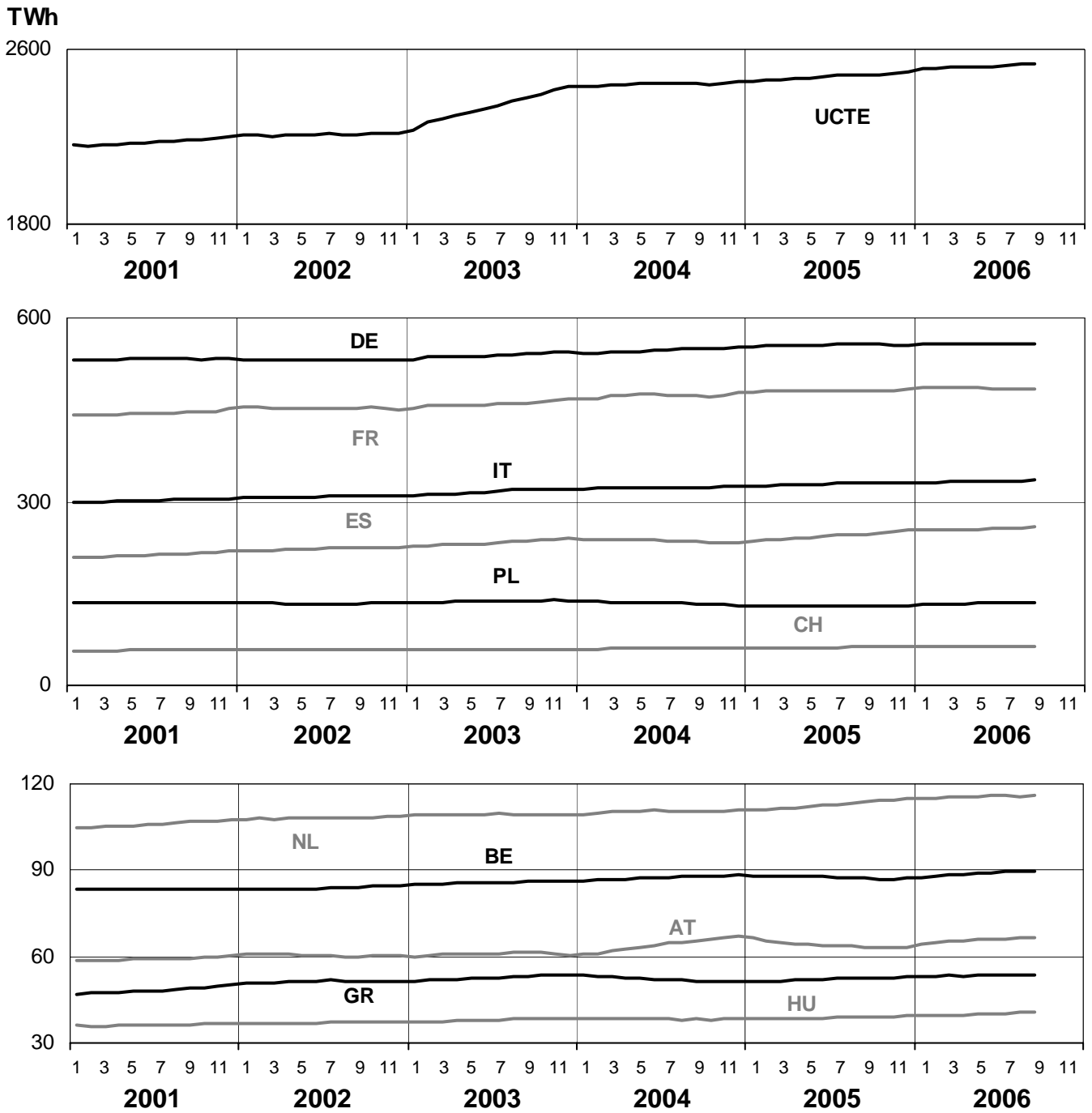


4 Monthly consumption variation

September 2006

2005 — 2006 —
Values in %



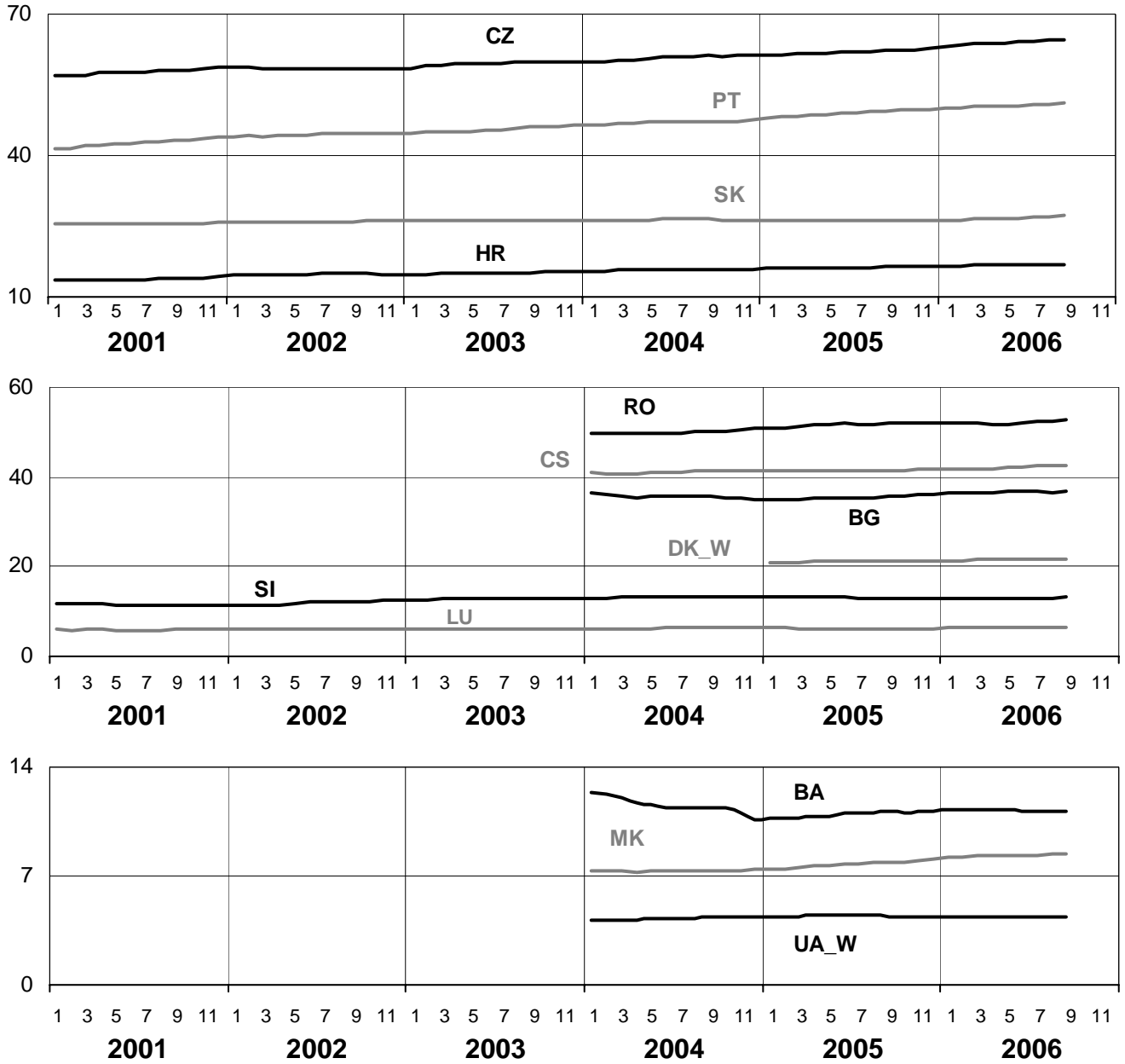


5

Consumption of the last 12 months

September 2006

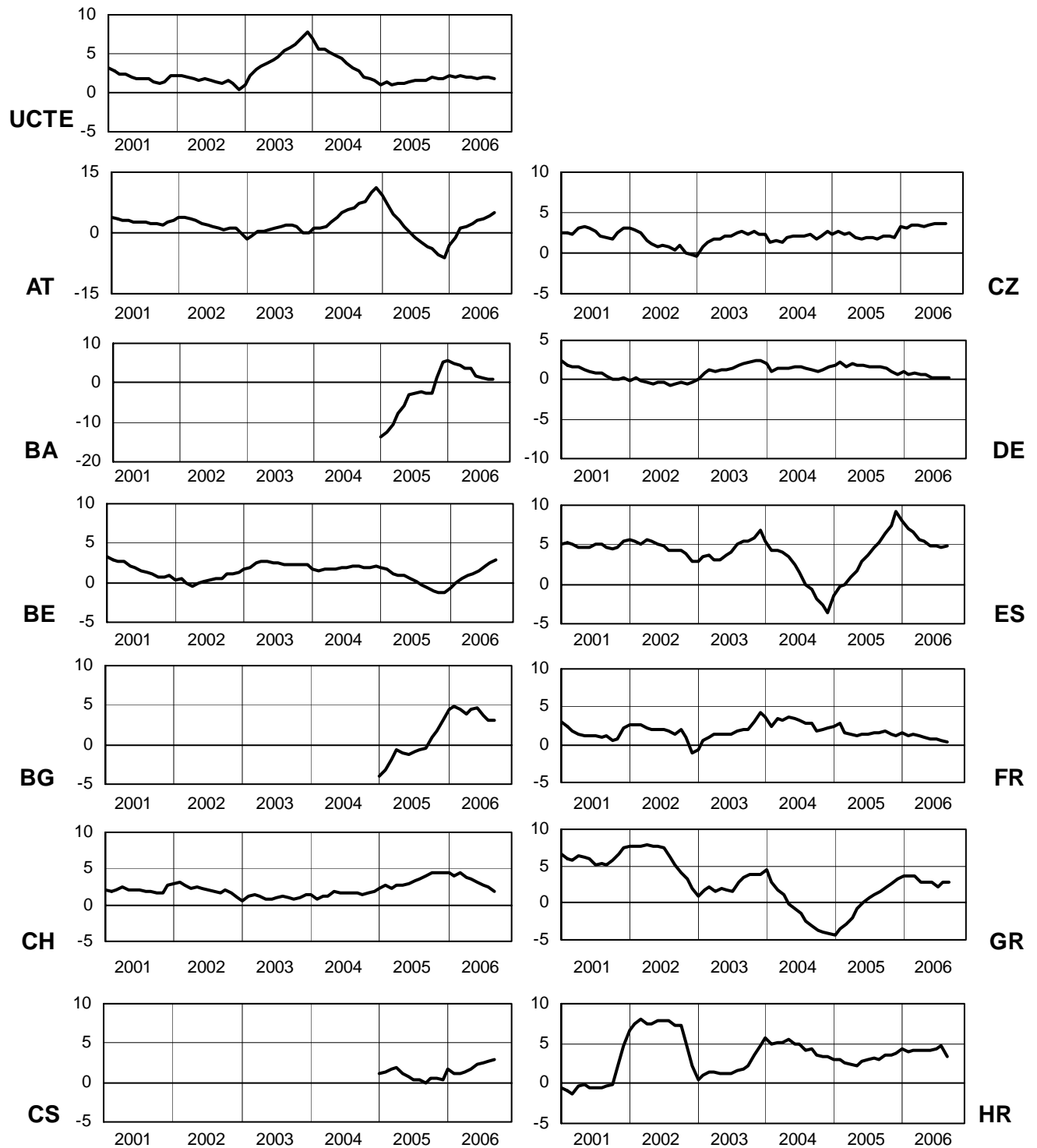
TWh



6

Variation of the last 12 months' consumption in %

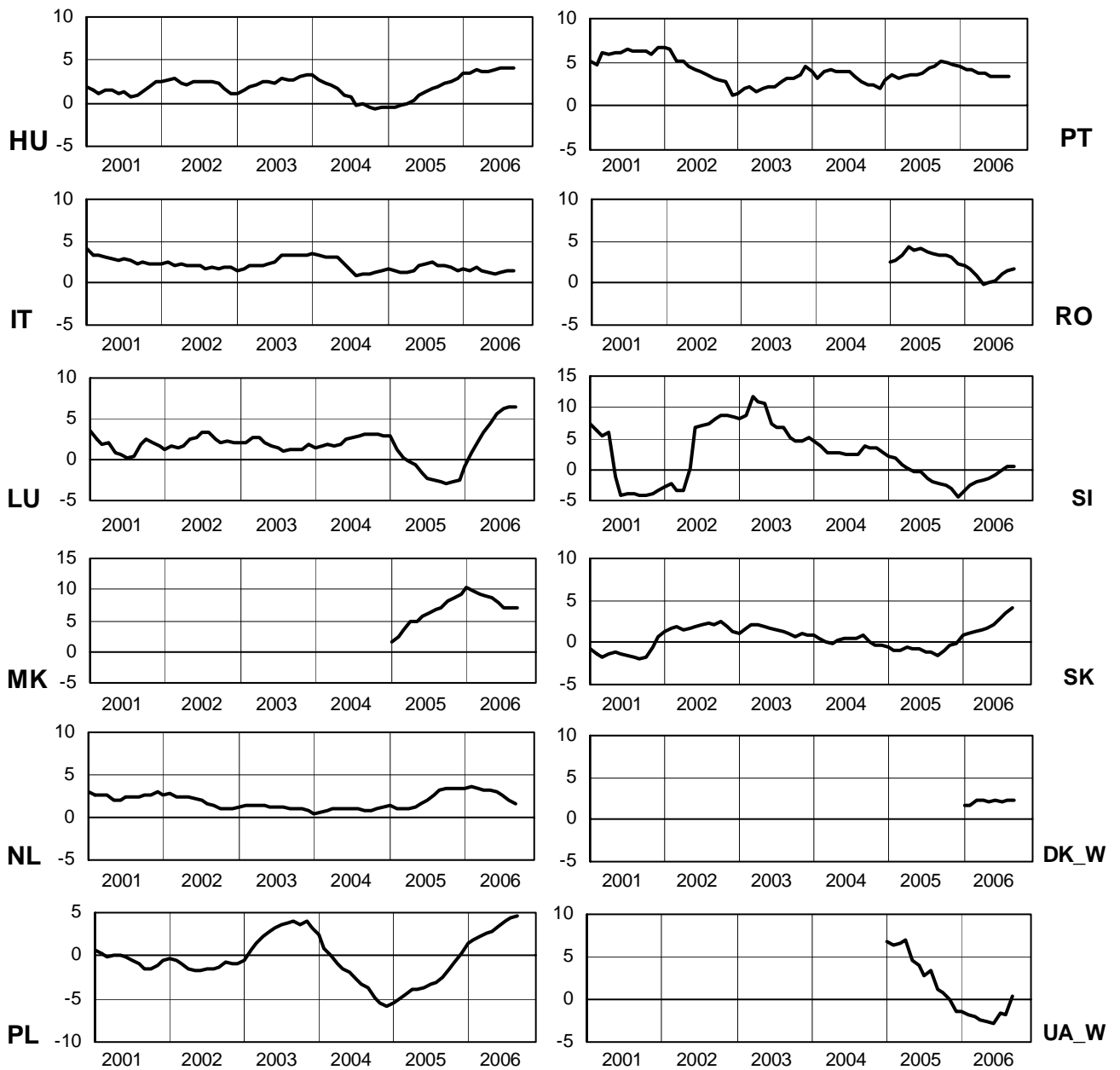
September 2006

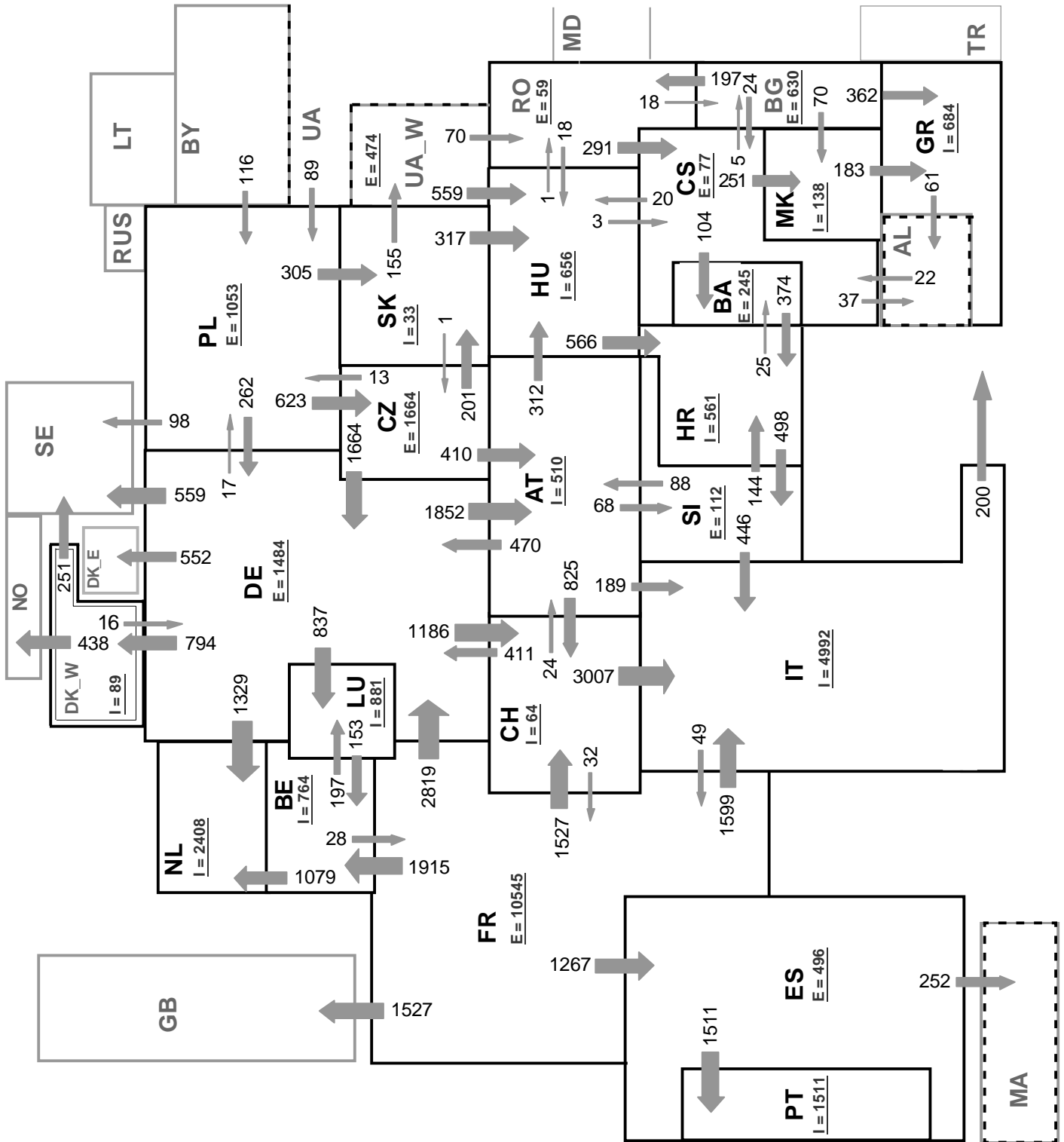


6

Variation of the last 12 months' consumption in %

September 2006





Associate member

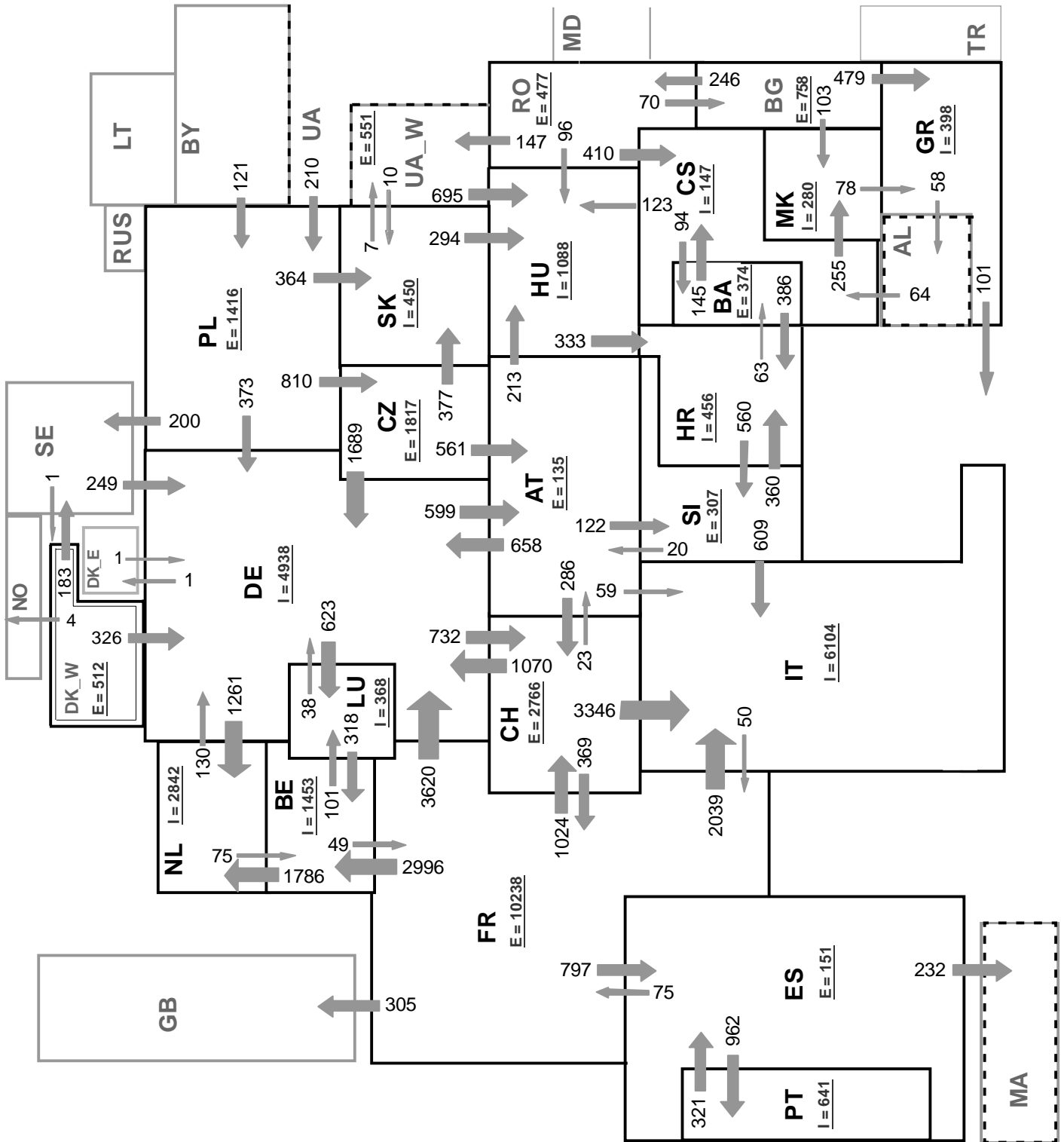
Synchronous operation with UCTE region

Sum of load flows in MW:

UCTE = 30387 MW

Total = 35983 MW

I = Import balance
E = Export balance



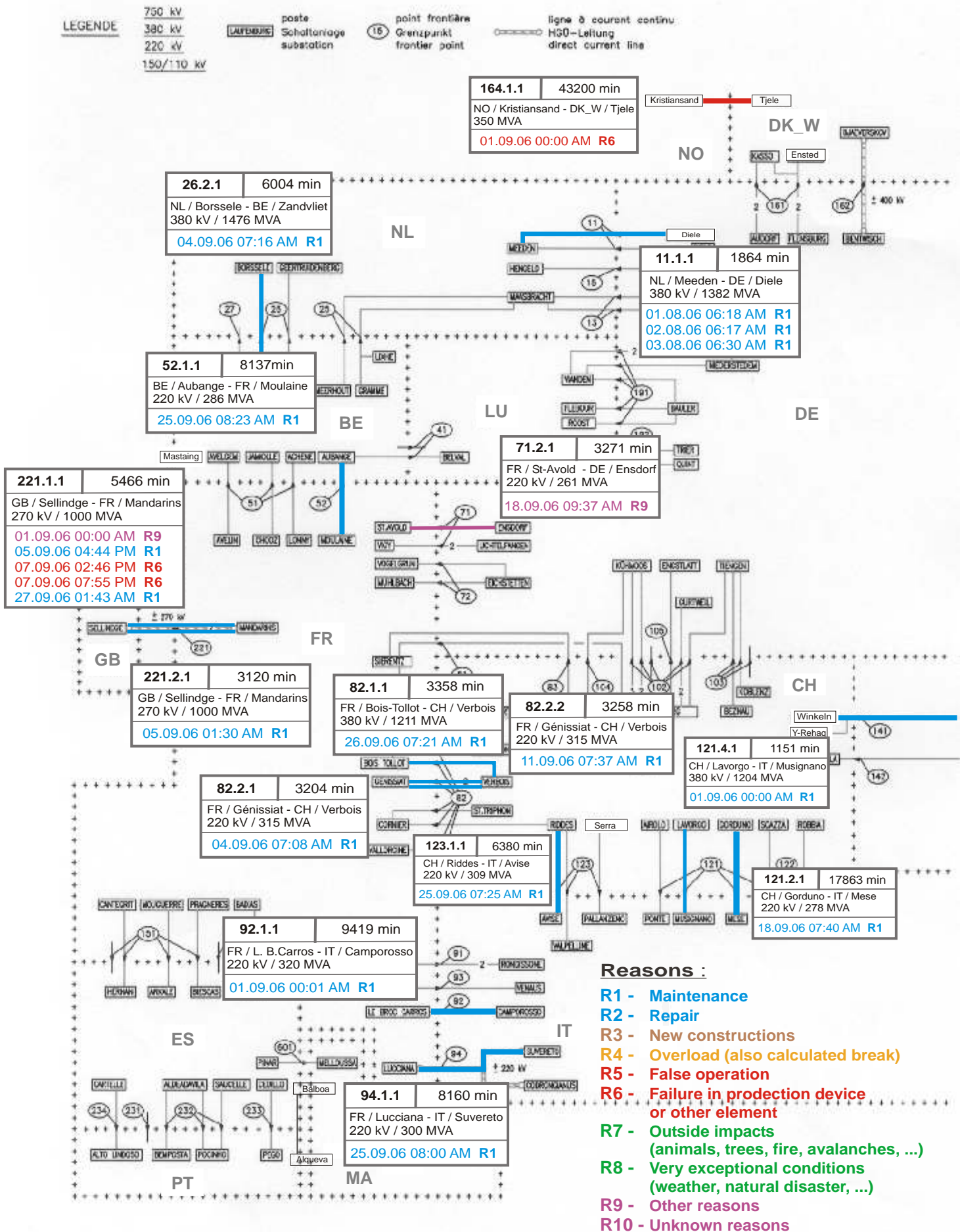
Associate member

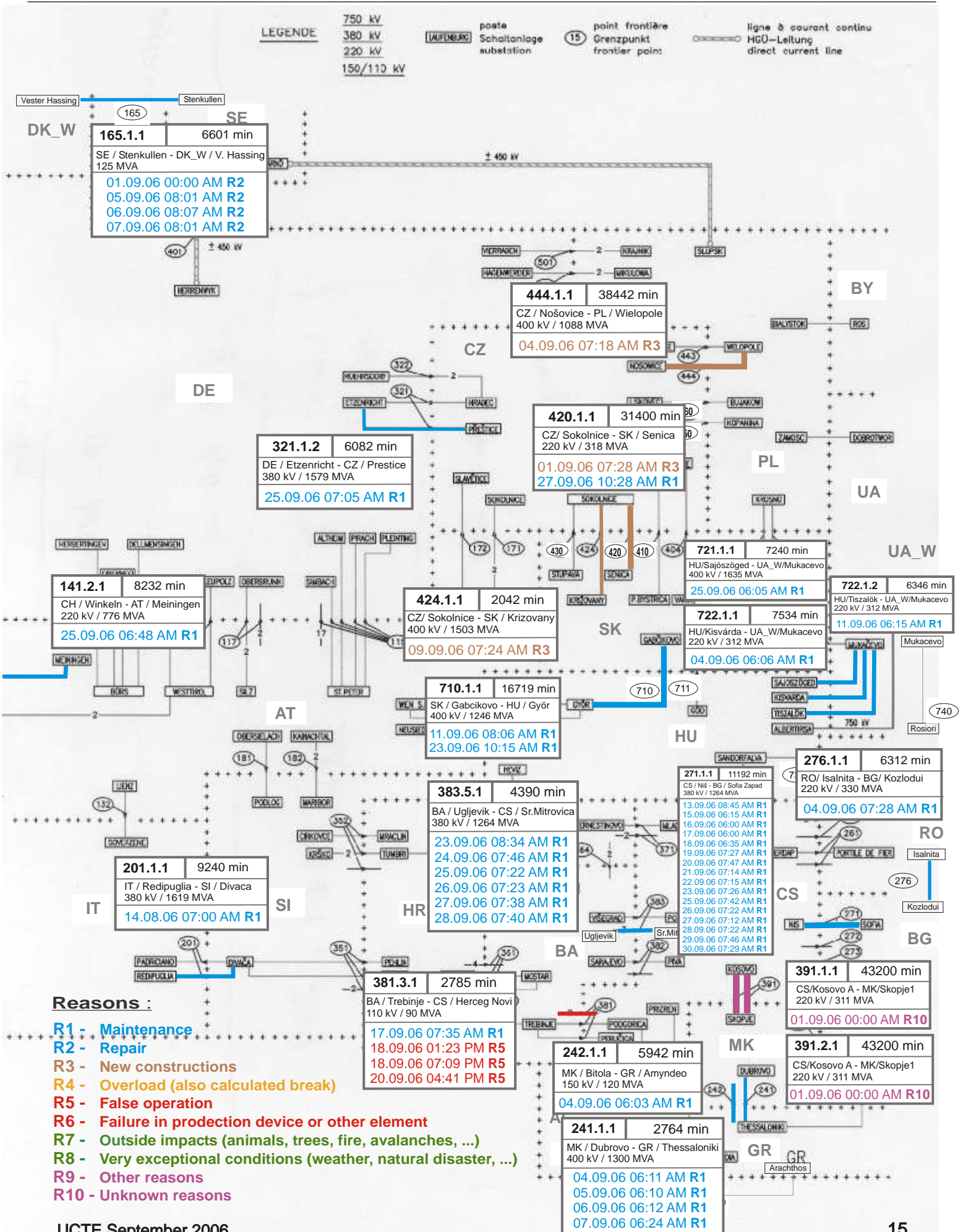
Synchronous operation with UCTE region

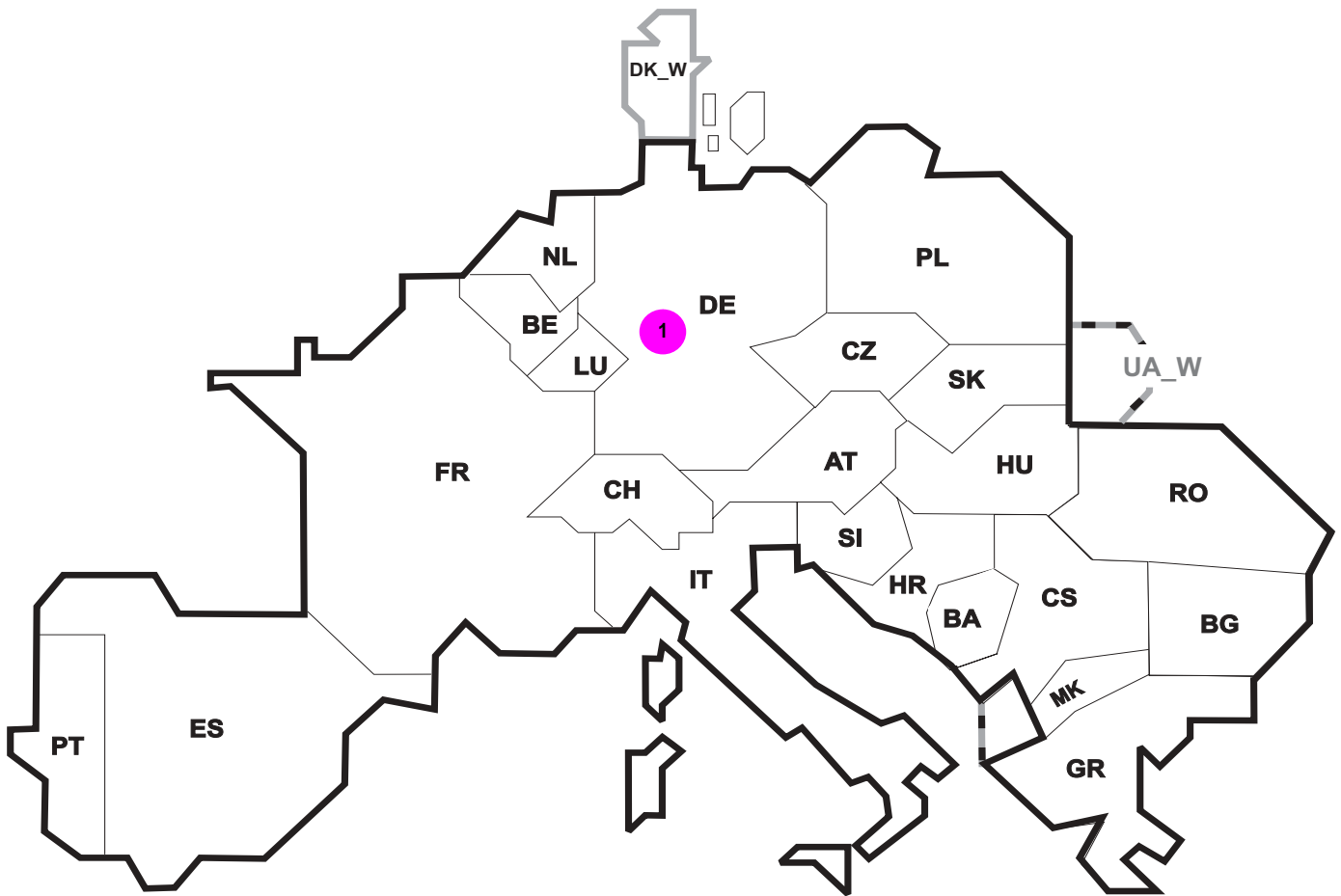
Sum of load flows in MW:

UCTE = 32741 MW
 Total = 35555 MW

I = Import balance
 E = Export balance







Reasons:

R4 Overload (also calculated break)

R5 False operation

R6 Failure in protection device or other element

R7 Outside impacts (animals, trees, fire, avalanches, ...)
(animals, trees, fire, avalanches, ...)

R8 Very exceptional conditions
(weather, natural disaster, ...)

R9 Other reasons

R10 Unknown reasons

No	Country	Substation	Reason	Energy not supplied [MWh]	Total loss of power [MW]	Restoration time [min]	Equivalent time of interruption ¹
1	DE	Kusenhorst	R10	216	360	36	0,20

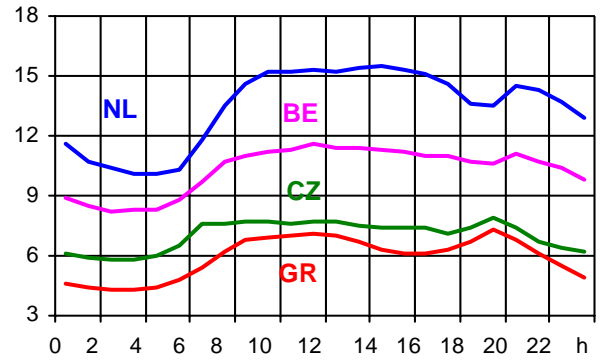
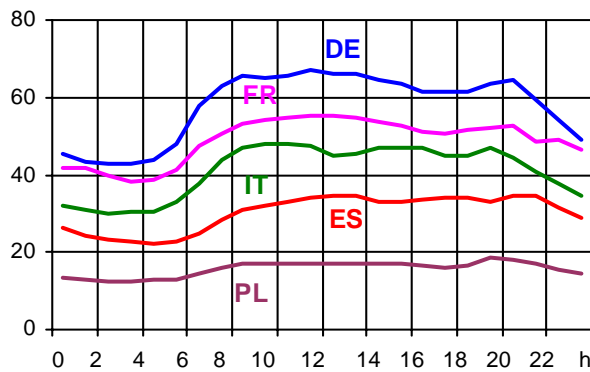
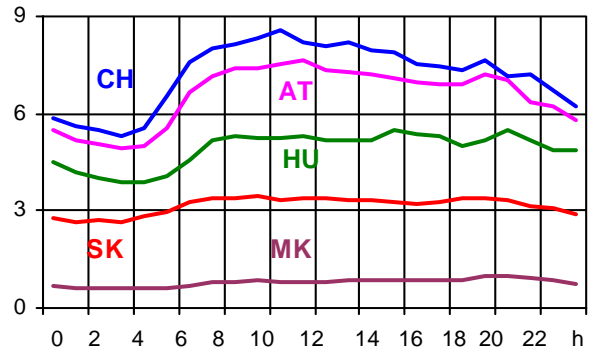
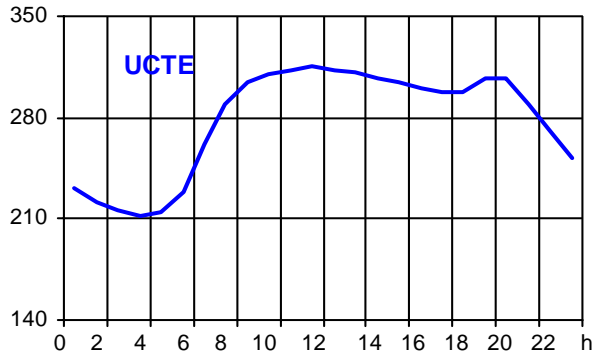
¹ (year [in min] * energy not supply) / consumption last 12 months

Control area	Export Programs	Import Programs	Export Programs at 03:00	Import Programs at 03:00	Export Programs at 11:00	Import Programs at 11:00
AT	529432	342890	466	579	984	363
BA	210592	81641	340	89	453	70
BE	602274	1338093	1114	1922	870	2068
BG	n.a.	n.a.	n.a.	n.a.	n.a.	n.a.
CH	2547289	2078449	2959	3018	5588	2836
CS	274897	368179	298	244	353	483
CZ	1777690	580578	2334	586	2691	799
DE	2378556	2965827	2059	3829	2036	7011
ES	1200190	882757	1817	1300	895	809
FR	7895777	1030144	11954	1372	10762	542
GR	50524	422267	22	721	119	521
HR	42061	462242	149	687	247	715
HU	442673	1094545	587	1263	600	1700
IT	85490	3976909	249	5241	50	6154
MK	78454	247548	7	130	7	293
NL	321632	2127855	457	2878	118	2982
PL	1032713	100583	1287	134	1604	214
PT	110911	821713	0	1500	0	646
RO	425036	175207	383	314	753	267
SI	529393	546285	765	687	1000	670
SK	586242	617888	781	760	851	1214
DK_W	553214	263843	970	800	462	0
UA_W	362335	0	475	0	549	0

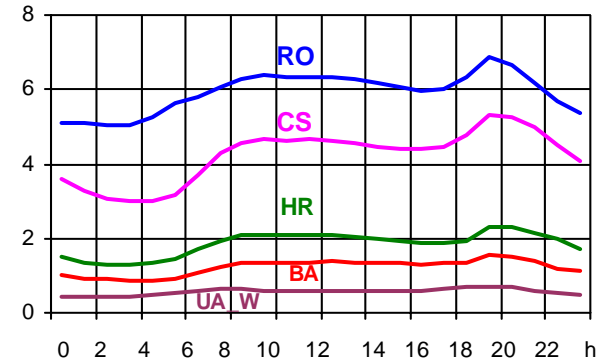
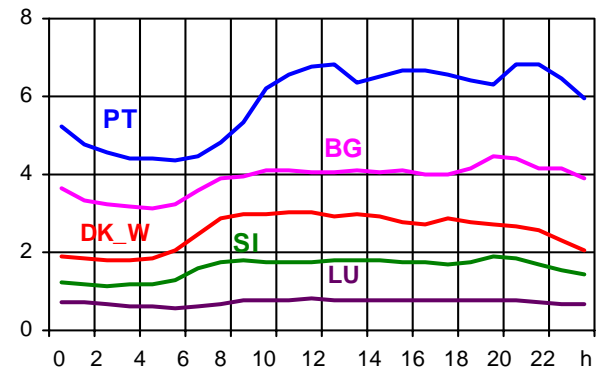
- Control areas can differ from national borders (i.e. German block which includes parts of AT, LU and DK).
- Values are calculated on an hourly base (MWh).
- This values are not the provisional values entered in the VULCANUS system, but the definitive values after an eventual correction during the actual date.
- Export Programs: Sum of all positive values of every hour of every border
- Import Programs: Sum of all negative values of every hour of every border
- Export Programs at 03:00: Sum of all positive values the third Wednesday from 02:00 to 03:00 a.m.
- Import Programs at 03:00: Sum of all negative values the third Wednesday from 02:00 to 03:00 a.m.
- Export Programs at 11:00: Sum of all positive values the third Wednesday from 10:00 to 11:00 a.m.
- Import Programs at 11:00: Sum of all negative values the third Wednesday from 10:00 to 11:00 a.m.

Consumption hourly load curves on 20.09.2006

Values in GW



	Highest load		Load representativity	Parallel power ²
	MW	var.% ¹		
AT	7656	2,0	100	8725
BA	1547	4,0	100	1741
BE ³	11628	3,3	100	10037
BG	4472	4,0	100	4824
CH	8556	-0,6	100	11226
CS	5340	4,5	100	4475
CZ	7908	1,6	100	9873
DE	73782	-2,6	91	72200
ES	35535	5,1	98	33301
FR	55241	-2,0	100	65219
GR	7331	1,9	100	6603
HR	2303	1,1	100	1779
HU	5505	-0,9	100	4213
IT	48092	1,8	100	41089
LU	797	-13,3	100	835
MK	1002	7,7	100	548
NL	15500	6,6	100	12342
PL ⁴	18480	1,0	100	22430
PT	7131	4,7	96	5930
RO	6855	4,0	100	6799
SI	1974	0,8	95	2049
SK	3435	0,0	100	2953
UCTE	315951	1,3		329191
DK_W	3021	-1,0	100	3715
UA_W	717	15,8	100	1143



- ¹ Variation as compared to corresponding month of the previous year
- ² Power produced in parallel operation (including autoproduction)
- ³ The reported figures are best estimates based on actual measurements and extrapolations.
- ⁴ Average value of each hour



Contact

Boulevard Saint-Michel, 15
B-1040 Brussels – Belgium
Tel +32 2 741 69 40 – Fax +32 2 741 69 49

info@ucte.org
www.ucte.org