

UCTE



September 2003

Monthly provisional values
union for the co-ordination of transmission of electricity

Table of contents ¹		Page
1	Electricity supply situation of the countries	2
2	Physical energy flows	3
3	Monthly consumption	4
4	Monthly consumption variation	5
5	Consumption of last 12 months	6
6	Variation of the last 12 months' consumption	7
7	Load flows (night)	8
8	Load flows (day)	9
9	Unavailability of international tie lines (major events)	10
10	Network reliability (major events)	12
11	Scheduled exchanges	13
12	Load on the 3 rd Wednesday	14

¹ Monthly provisional values as of UCTE database as of 17 December 2003

1

Electricity supply situation of the countries

September 2003

Countries	Net production in GWh ¹				Exchange balance in GWh	Pump in GWh	Consumption in GWh ¹			
	Hy	Tn	Tc	Total			monthly	Δ ³ [%]	last 12 months	Δ ³ [%]
B	49	3762	2625	6436 ²	291	58	6669	0,4	84518	1,2
D	1389	12998	27739	42126 ²	-999	701	40426	2,3	507851	2,2
E	1975	4126	12126	18227 ²	160	437	17950	6,0	219676	4,1
F	3199	31457	3365	38021	-4422	614	32985	1,7	444293	1,8
GR	291	0	3598	3889 ²	116	81	3924	6,0	49406	3,2
I	2631	0	20000	22631	4314	769	26176	1,5	319134	3,2
SLO	184	453	321	958	-46	0	912	-7,3	12212	5,4
HR	166	0	832	998 ²	144	8	1134	3,3	15196	1,8
BiH	176	0	455	631	113	0	744	n.a.	n.a.	n.a.
FYROM	28	0	415	443 ²	2	0	445	n.a.	n.a.	n.a.
SCG	366	0	2130	2496	181	66	2611	n.a.	n.a.	n.a.
L	75	0	247	322	270	97	495	2,3	6086	0,2
NL	0	195	7479	7674 ²	1326	0	9000	1,6	109874	4,3
A	2155	0	1319	3474	803	232	4045	1,8	51581	1,0
P	589	0	2602	3191 ²	351	33	3509	7,9	42412	2,5
CH	2633	2251	225	5109 ²	-325	257	4527	-0,7	59015	2,7
CZ	104	2192	3653	5949 ²	-1492	51	4406	0,5	59783	3,8
H	8	725	1580	2313 ²	698	0	3011	0,8	38245	1,1
PL ⁵	193	0	11417	11610 ²	-850	186	10574	1,5	138328	1,2
SK	178	1271	540	1989 ²	-13	30	1946	-2,2	26319	5,4
UCTE	17142	60733	107459	185334²	-57	3665	181612	2,6	2233995	0,1
RO	576	168	2803	3547 ²	77	0	3624	n.a.	n.a.	n.a.
BG	177	1135	1988	3300 ²	-756	45	2499	n.a.	n.a.	n.a.
West-UA	2	0	558	560 ²	-277	0	283	n.a.	n.a.	n.a.

¹ Percentage as referred to total values in %

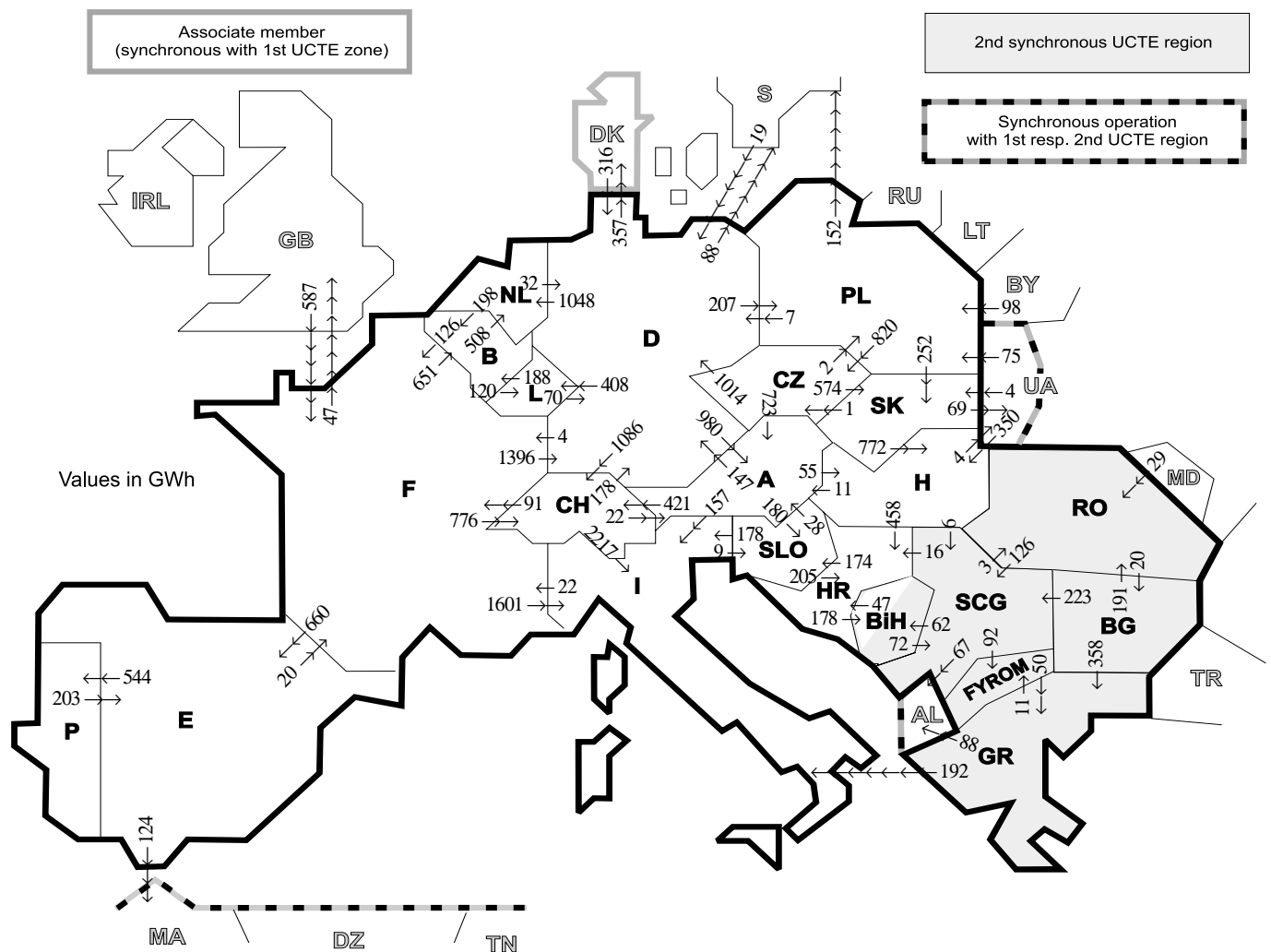
Countries	B	D	E	F	GR ⁴	I	SLO	HR	BiH	FY- ROM	SCG	L	NL	A	P	CH	CZ	H	PL	SK	RO	BG	West- UA
Production	99	94	94	97	93	100	95	100	99	100	96	98	100	84	91	100	100	100	100	100	100	100	100
Consumption	99	94	94	97	93	100	95	100	99	100	96	99	100	90	91	100	100	100	100	100	100	100	100

² Including deliveries from industry

³ Variation as compared to corresponding period of the previous year and representativity 100%

⁴ The representativity of data referring to the whole country including the isolated systems of the Greek island is 93%.
The representativity of data referring interconnected system on the mainland is 99%.

⁵ Production values are gross values.



Exporting countries	Importing countries																			Σ Export							
	B	D	E	F	GR	I	SLO	HR	BIH	FY-ROM	SCG	L	NL	A	P	CH	CZ	H	PL		SK	RO	BG	West-UA	DK ²	III ¹	
B	-	-	-	126	-	-	-	-	-	-	-	120	508	-	-	-	-	-	-	-	-	-	-	-	-	-	754
D	-	-	-	4	-	-	-	-	-	-	-	408	1048	980	-	1086	0	-	207	-	-	-	-	-	357	445	4535
E	-	-	-	20	-	-	-	-	-	-	-	-	-	-	544	-	-	-	-	-	-	-	-	-	-	124	688
F	651	1396	660	-	-	1601	-	-	-	-	-	-	-	-	-	776	-	-	-	-	-	-	-	-	-	47	5131
GR	-	-	-	-	-	192	-	-	-	11	-	-	-	-	-	-	-	-	-	-	-	0	-	-	-	88	291
I	-	-	-	22	0	-	9	-	-	-	-	-	-	0	0	-	-	-	-	-	-	-	-	-	-	-	31
SLO	-	-	-	-	-	178	-	-	-	-	-	-	-	28	-	-	-	-	-	-	-	-	-	-	-	-	411
HR	-	-	-	-	-	-	174	-	178	-	0	-	-	-	-	-	-	0	-	-	-	-	-	-	-	-	352
BIH	-	-	-	-	-	-	47	-	-	-	72	-	-	-	-	-	-	-	-	-	-	-	-	-	-	-	119
FYROM	-	-	-	-	50	-	-	-	-	-	0	-	-	-	-	-	-	-	-	-	-	-	0	-	-	-	50
SCG	-	-	-	-	-	-	-	16	62	92	-	-	-	-	-	-	-	0	-	-	-	3	0	-	-	67	240
L	188	70	-	-	-	-	-	-	-	-	-	-	-	-	-	-	-	-	-	-	-	-	-	-	-	-	258
NL	198	32	-	-	-	-	-	-	-	-	-	-	-	-	-	-	-	-	-	-	-	-	-	-	-	-	230
A	-	147	-	-	-	157	180	-	-	-	-	-	-	-	-	-	-	-	-	-	-	-	-	-	-	-	960
P	-	-	203	-	-	-	-	-	-	-	-	-	-	-	-	-	-	-	-	-	-	-	-	-	-	-	203
CH	-	178	-	91	-	2217	-	-	-	-	-	-	-	22	-	-	-	-	-	-	-	-	-	-	-	-	2508
CZ	-	1014	-	-	-	-	-	-	-	-	-	-	-	723	-	-	-	-	2	574	-	-	-	-	-	-	2313
H	-	-	-	-	-	-	-	458	-	-	6	-	-	11	-	-	-	-	-	0	0	-	4	-	-	4	483
PL	-	7	-	-	-	-	-	-	-	-	-	-	-	-	-	-	820	-	-	252	-	-	0	-	152	1231	
SK	-	-	-	-	-	-	-	-	-	-	-	-	-	-	-	-	1	772	0	-	-	-	69	-	69	911	
RO	-	-	-	-	-	-	-	-	-	-	126	-	-	-	-	-	-	-	-	0	-	20	-	-	-	0	146
BG	-	-	-	-	358	-	-	-	-	0	223	-	-	-	-	-	-	-	-	-	-	191	-	-	-	0	772
West-UA	-	-	-	-	-	-	-	-	-	-	-	-	-	-	-	-	-	350	75	4	0	-	-	-	-	429	
DK ²	-	316	-	-	-	-	-	-	-	-	-	-	-	-	-	-	-	-	-	-	-	-	-	-	-	316	
III ¹	-	19	0	587	0	-	-	-	-	-	0	-	-	-	-	-	-	350	173	4	29	0	-	-	-	1162	
Σ Import	1037	3179	863	850	408	4345	363	726	240	103	427	528	1556	1764	544	2283	821	1177	382	830	223	20	73	357	996	24524	

Sum of physical energy flows between UCTE countries = 21264 GWh

Total physical energy flows = 23665 GWh

¹ III = Third countries: Albania, Belarus, Denmark, Great Britain, Morocco, Republic of Moldavia, Sweden, Republic of Turkey and West-Ukraine

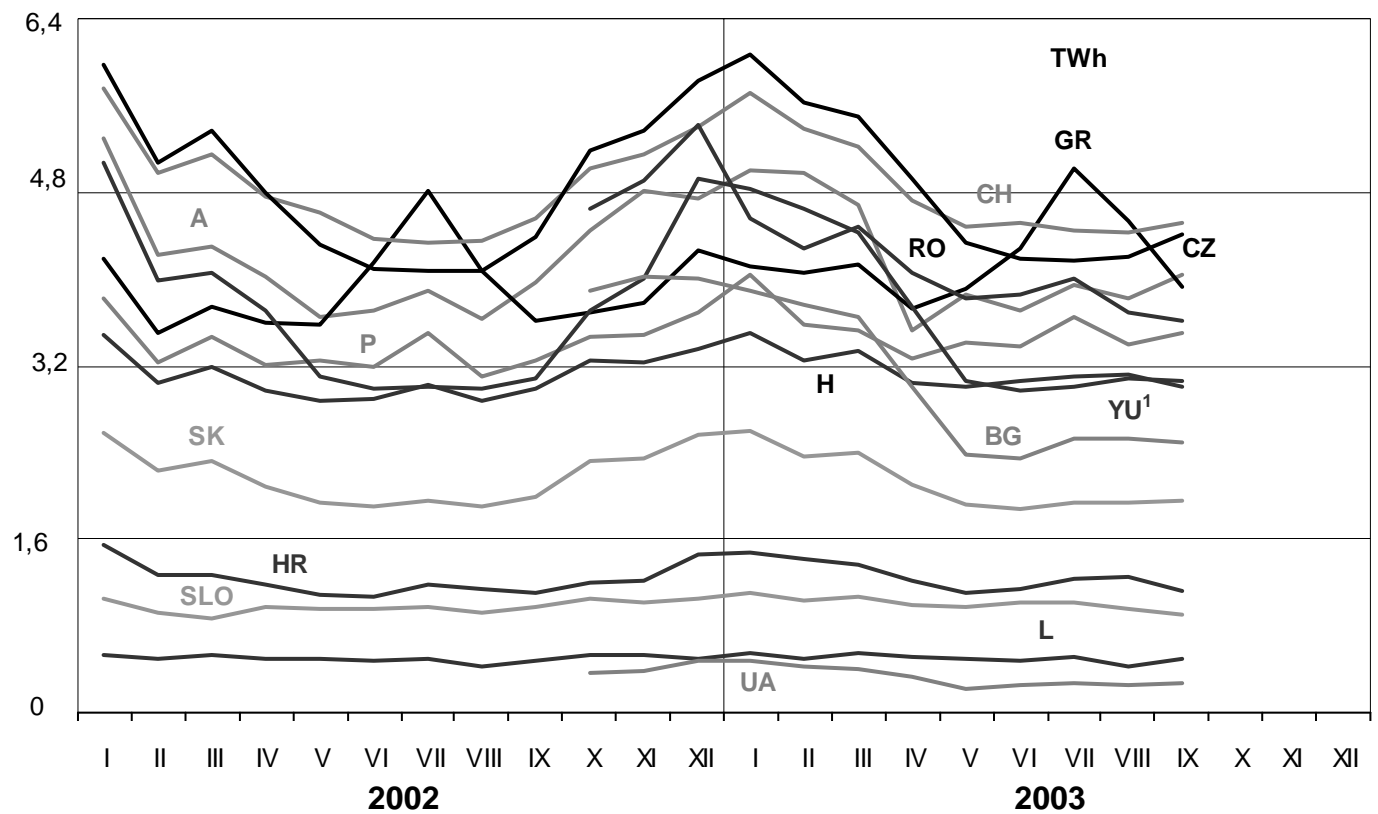
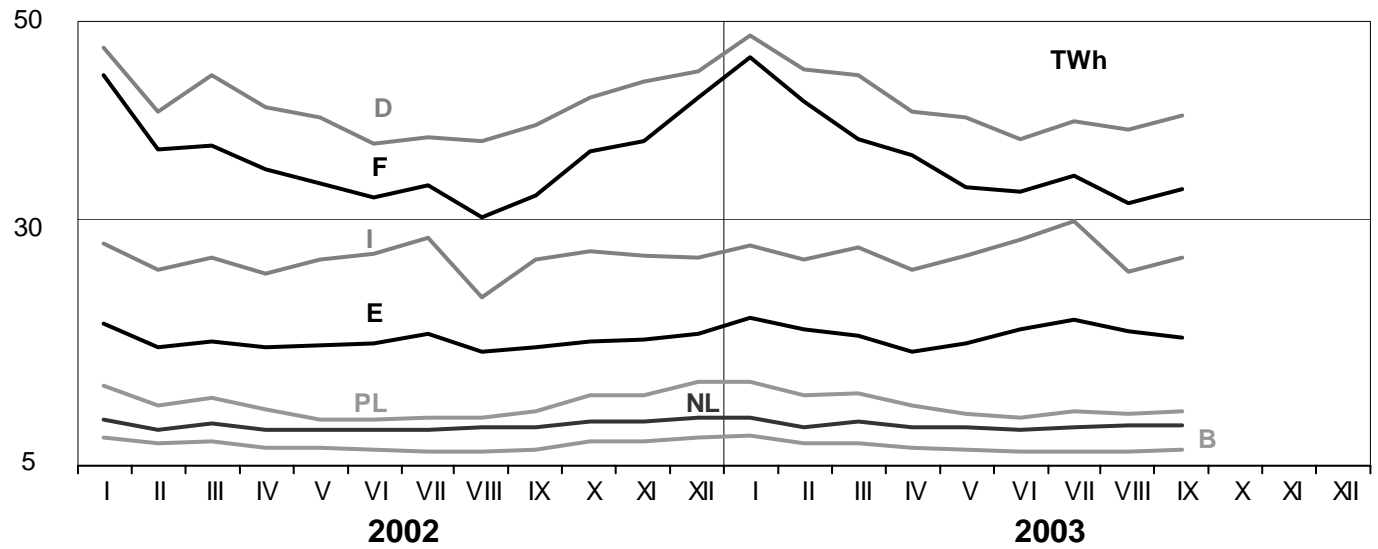
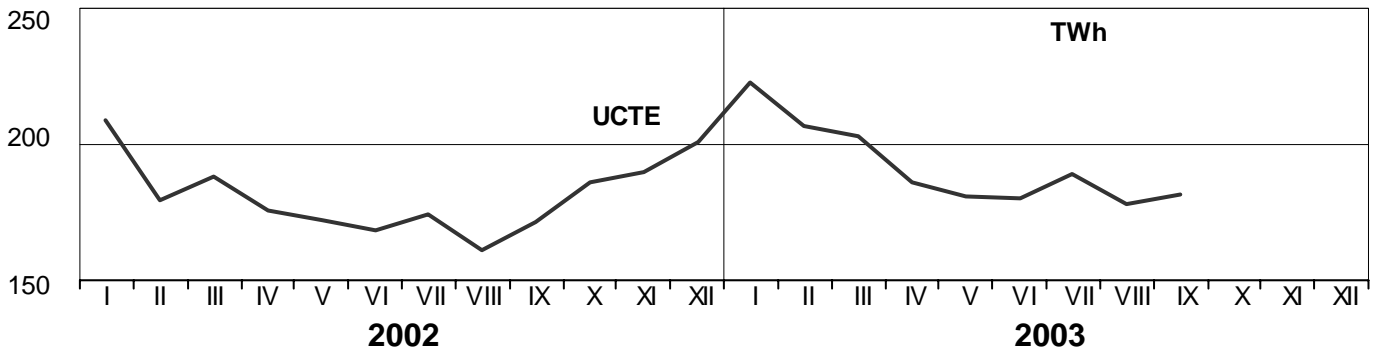
² Denmark (Jutland)

These physical energy flows were measured on the cross-frontier transmission lines (≥ 110 kV) listed in table 9 of the Statistical Yearbook. These values may differ from the official statistics and the exchange balances in chapter 1.

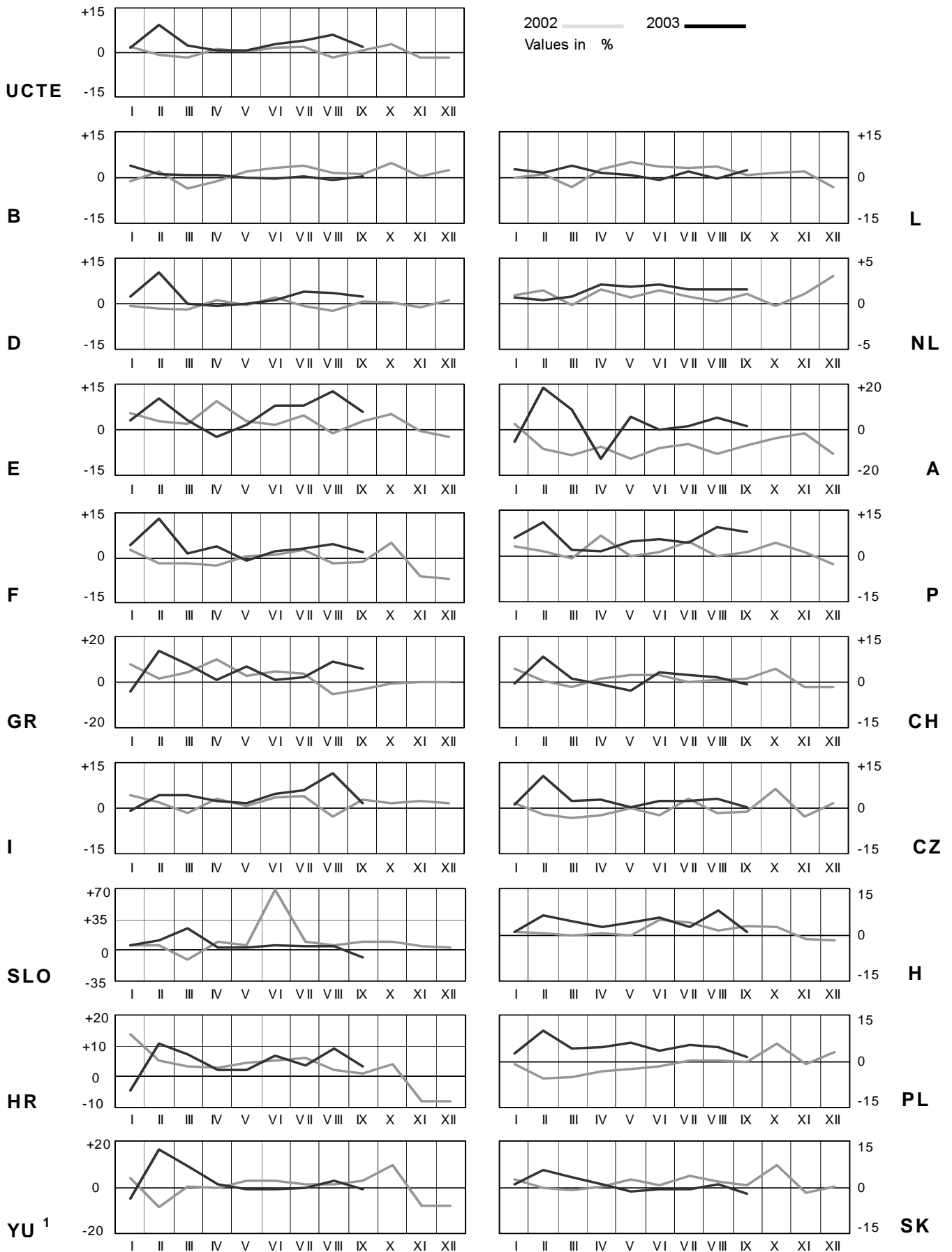
3

Monthly consumption

September 2003



¹ YU = FRY + FYROM (Federal Republic of Yugoslavia and former Yugoslav Republic of Macedonia)

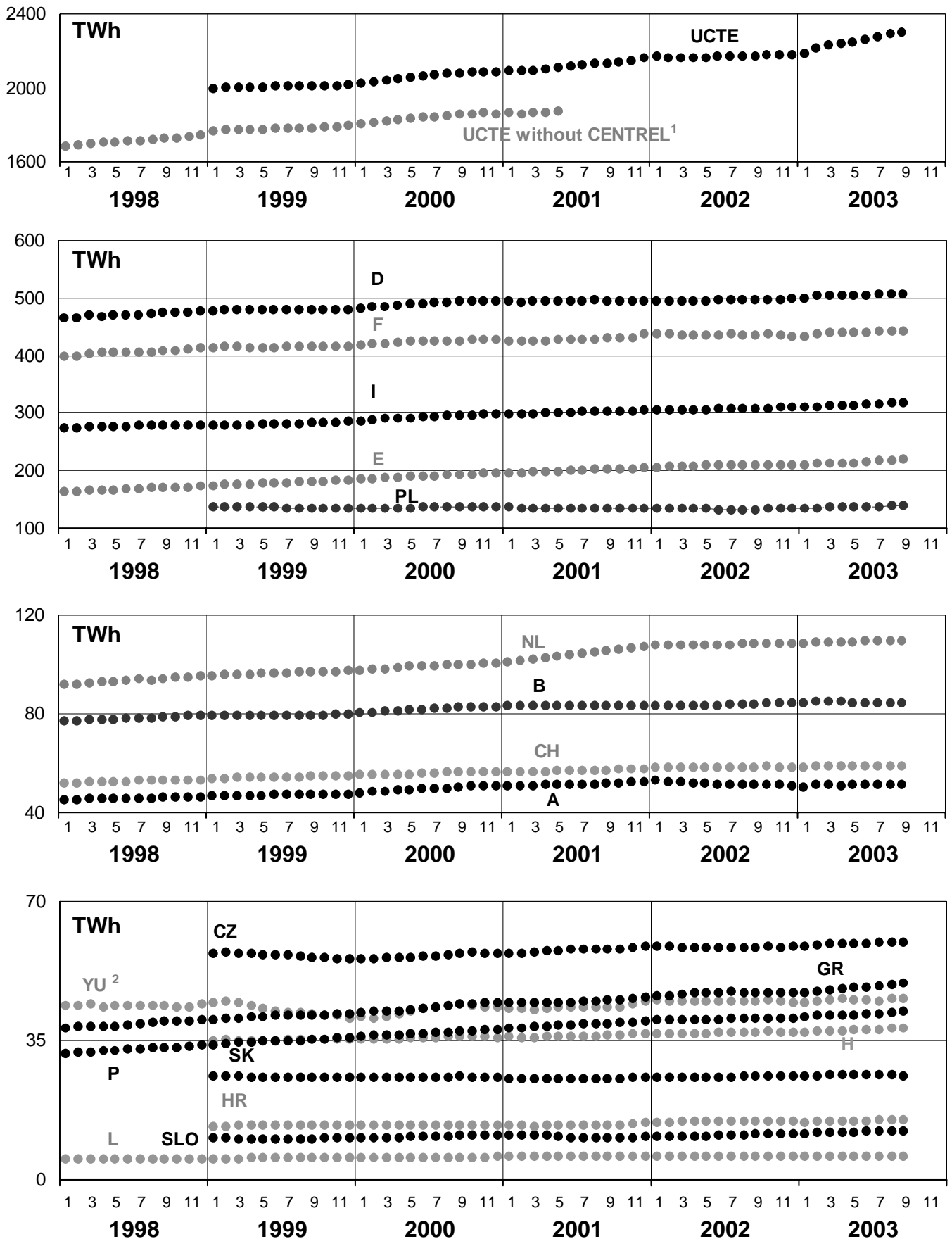


¹YU = FRY + FYROM (Federal Republic of Yugoslavia and former Yugoslav Republic of Macedonia)

5

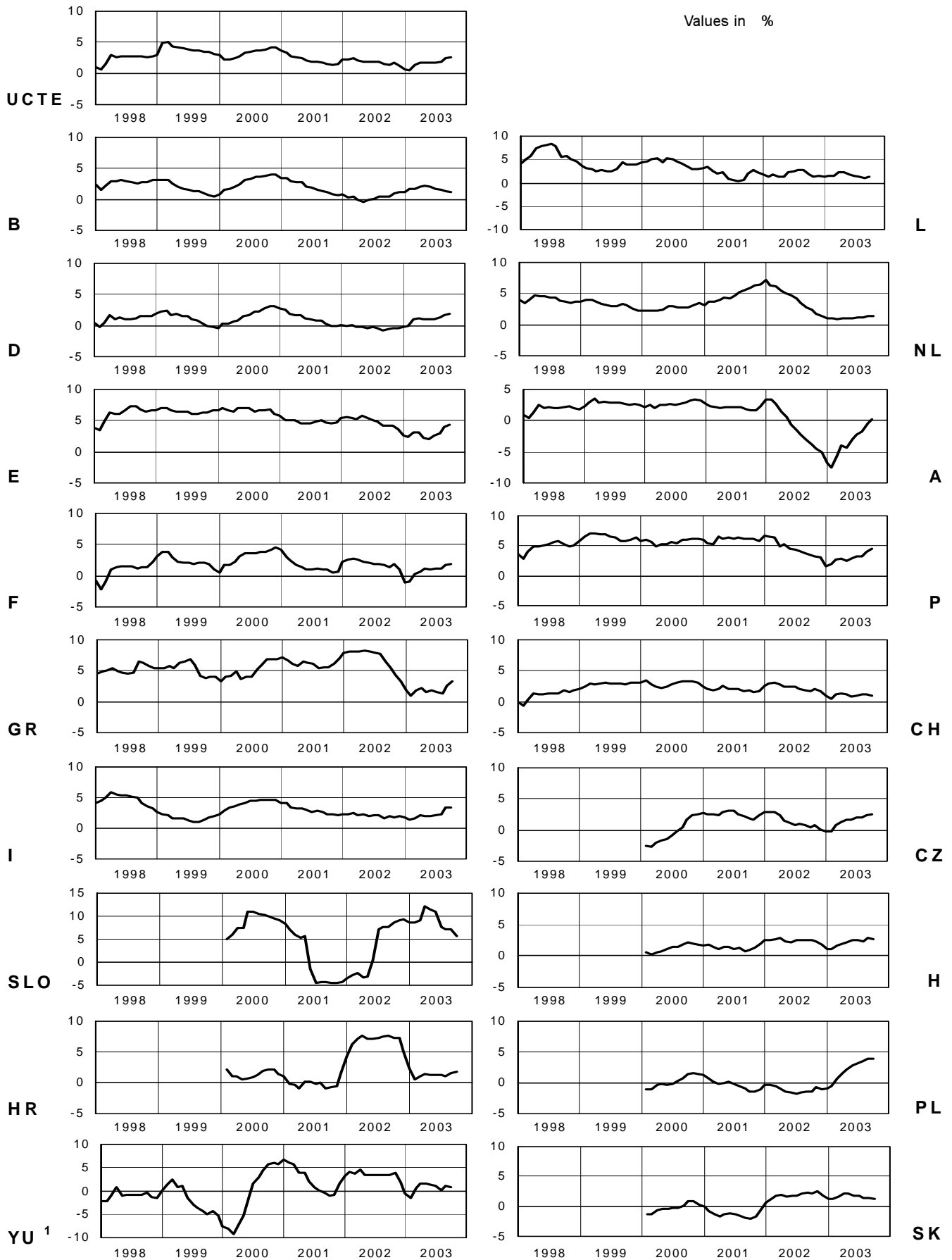
Consumption of last 12 months

September 2003

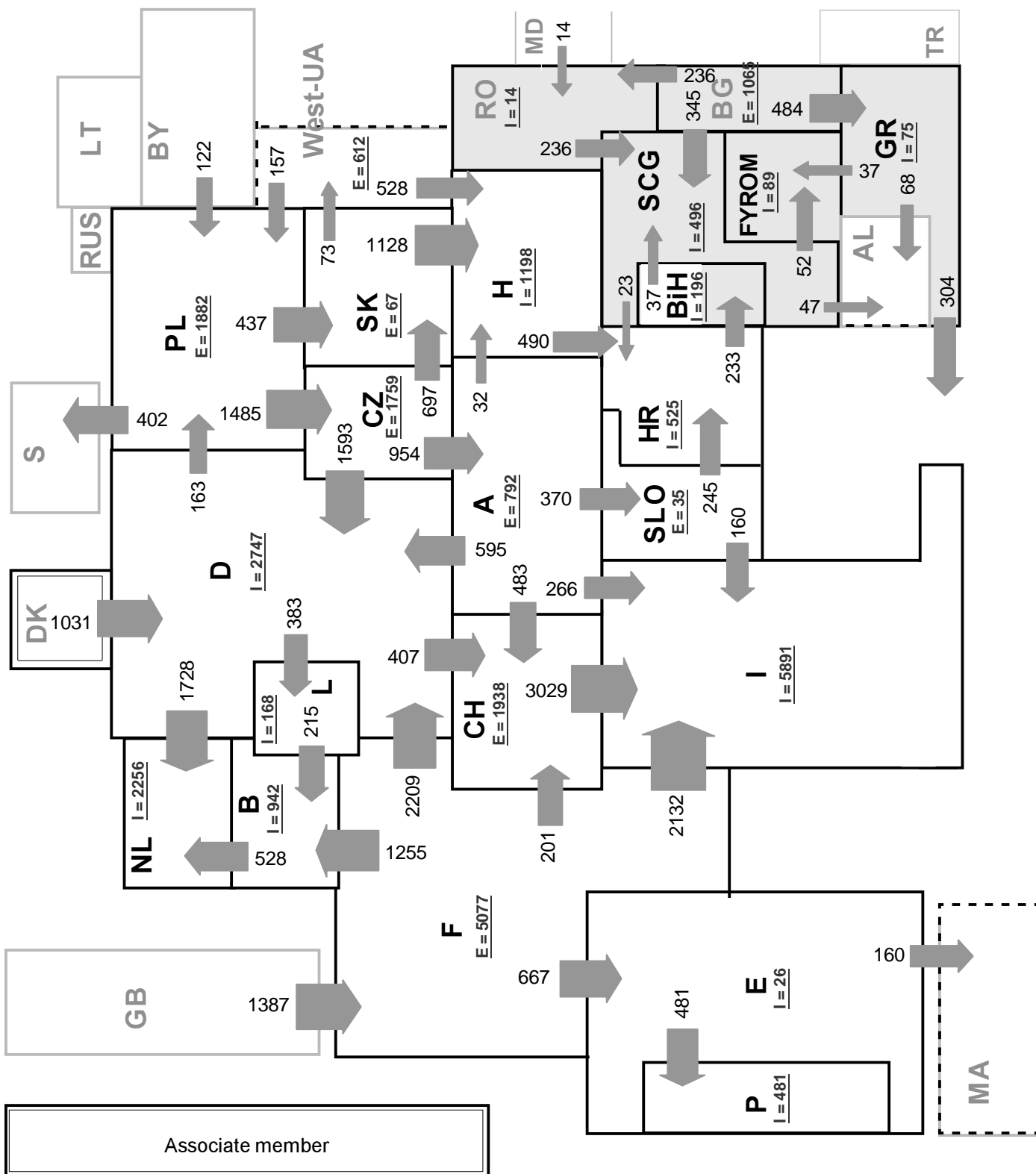


¹ CENTREL countries CZ, H, PL and SK member of UCTE from May 2001

² YU = FRY + FYROM (Federal Republic of Yugoslavia and former Yugoslav Republic of Macedonia)



¹ YU = FRY + FYROM (Federal Republic of Yugoslavia and former Yugoslav Republic of Macedonia)



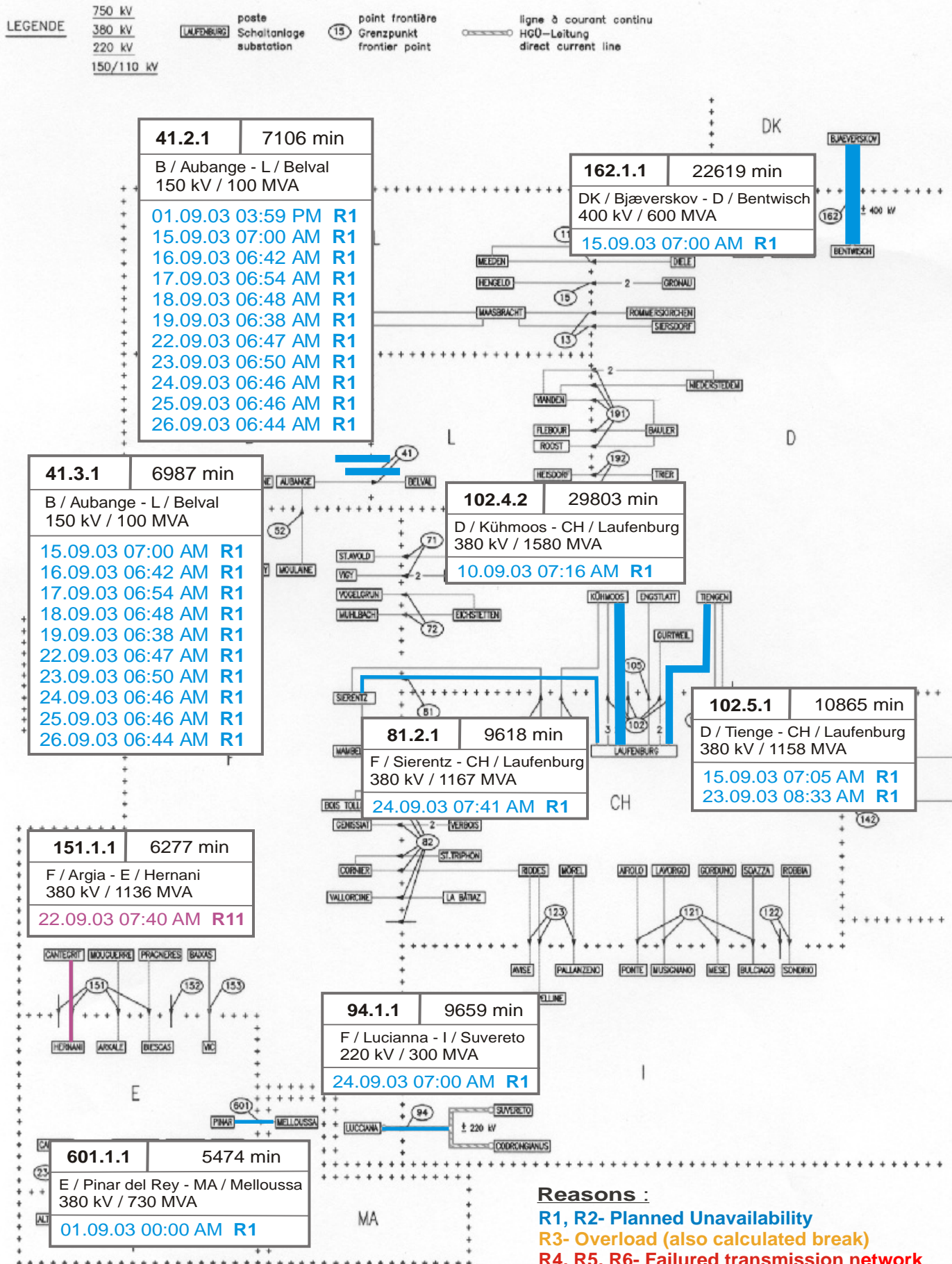
Sum of load flows in MW:

UCTE = 24320 Total = 28309

* Central European Time (CET)

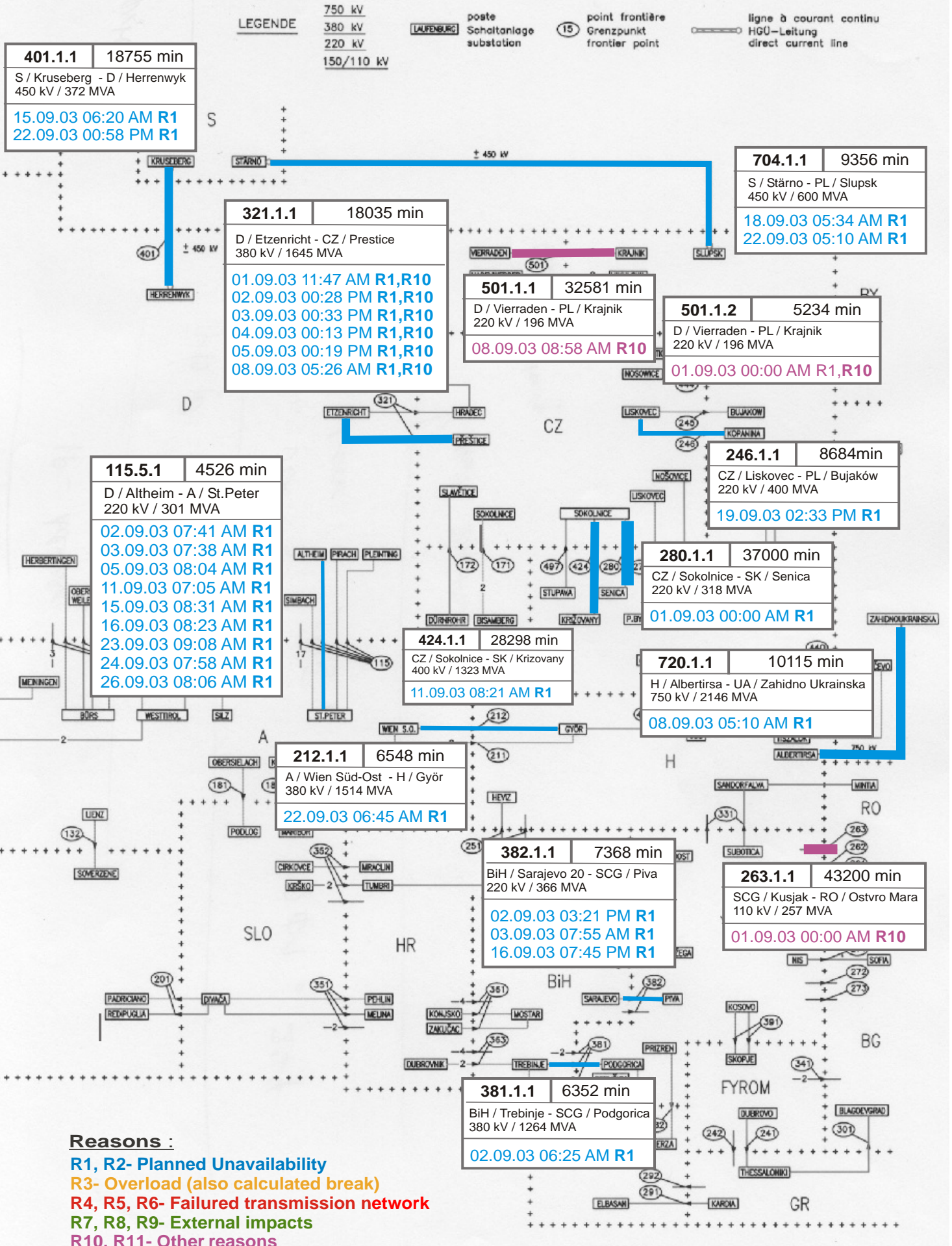
I = Import balance

E = Export balance



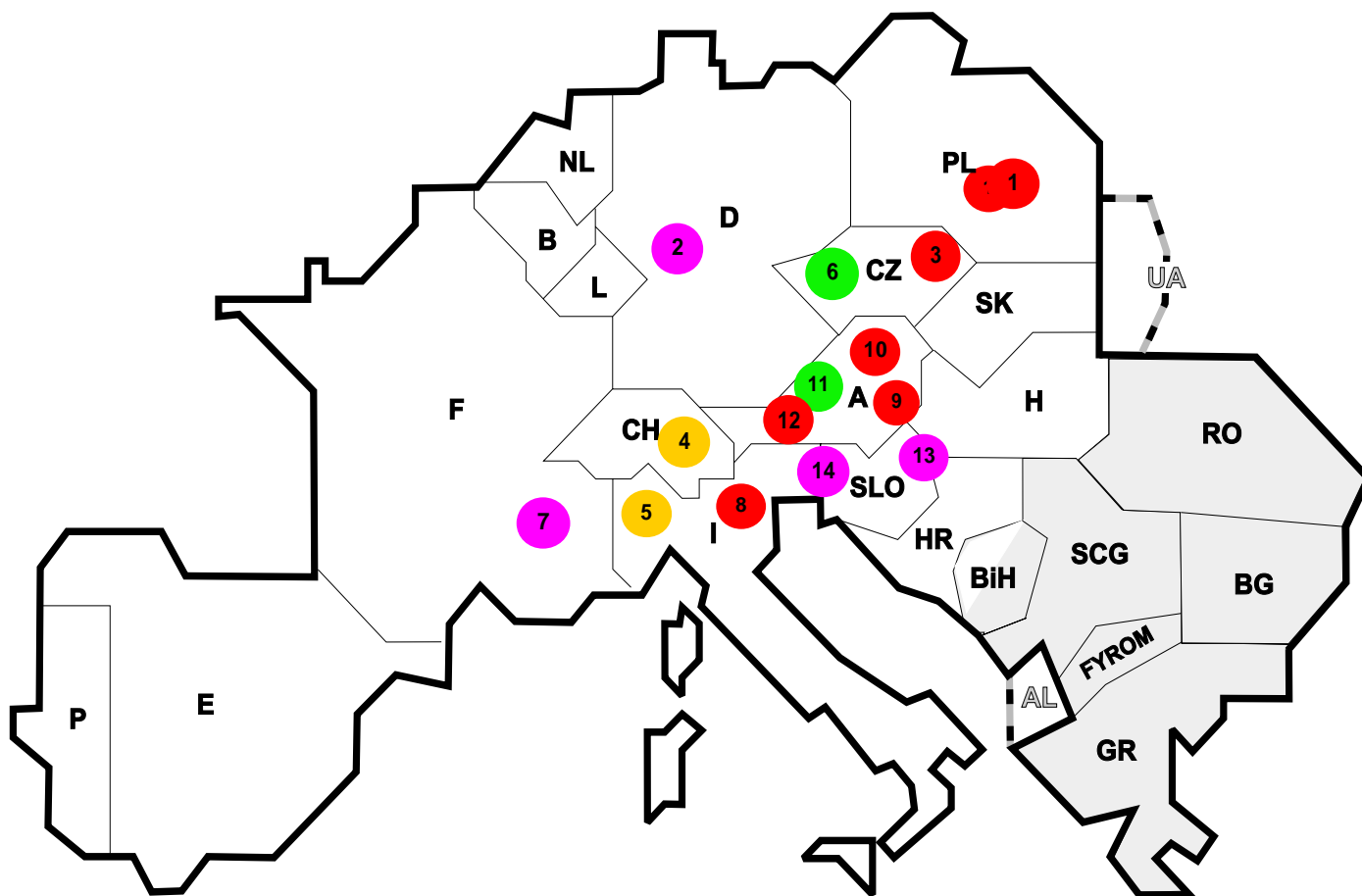
Reasons :

- R1, R2- Planned Unavailability
- R3- Overload (also calculated break)
- R4, R5, R6- Failed transmission network
- R7, R8, R9- External impacts
- R10, R11- Other reasons



Reasons :

- R1, R2- Planned Unavailability
- R3- Overload (also calculated break)
- R4, R5, R6- Failed transmission network
- R7, R8, R9- External impacts
- R10, R11- Other reasons



Reasons:

R3 Overload

R7, R8, R9 External impacts (animals...)

R4, R5, R6 Failure in the transmission network

R10, R11 Other reasons

Nbr	Country	Substation	Reason	Energie not supplied [MWh]	Total loss of power [MW]	Restoration time [min]	Equivalent time of interruption ¹
1	PL	Rogow iec	R6	540	1750	764	6,65
2	D	Brauweiler	R10	477	260	110	0,27
3	CZ	Krasikov	R4	111	230	28	2,02
4	CH	Mettlen	R3	70	0	20	0,00
5	I	Montecorvino	R3	15	150	6	0,25
6	CZ	Sokolnice	R7	14	20	37	0,18
7	F	Pontarlier	R11	11	49	16	0,06
8	I	Misterbianco	R5	3	40	5	0,07
9	A	Ernsthofen	R5	0	0	16	0,00
10	A	Hessenberg	R6	0	0	30	0,00
11	A	Westtirol	R7	0	0	574	0,00
12	A	Wien-Südost	R6	0	0	35	0,00
13	SLO	Bericevo	R10	0	0	7	0,00
14	SLO	Divaca	R10	0	0	63	0,00

¹ (year [in min] * power loss) / consumption last 12 months

Control area	Prog_exp	Prog_imp	Prog_exp3	Prog_imp3	Prog_exp11	Prog_imp11
B	339165	580354	695	0	212	591
D	2977287	2515554	3669	3281	2880	4172
E	522955	684572	963	1200	810	824
F	6520482	2232489	8454	2555	9304	4272
GR	219928	333598	300	367	300	447
I	31507	4345391	0	5567	1	5892
SLO	316810	490598	405	648	498	762
HR	183611	571619	269	467	226	453
BiH	79	209	86	193	39	227
FYROM	n.a.	n.a.	n.a.	n.a.	n.a.	n.a.
SCG	256235	455033	264	490	229	670
NL	381442	1709026	531	1828	317	2588
A	1142649	286948	278	1433	396	1600
P	79820	428803	0	650	140	639
CH	2195104	1973316	2508	3755	3477	1530
CZ	1881070	366482	2577	238	2728	919
H	310388	1009094	521	1251	322	1520
PL	1009403	205320	1129	200	2085	165
SK	633012	573958	805	607	950	847
RO	420	1340	60	141	0	37
BG	n.a.	n.a.	n.a.	n.a.	n.a.	n.a.
West-UA	277487	0	322	0	450	0

- Control areas can differ from national borders (i.e. German block which includes parts of A, L and DK).

- Values are calculated on an hourly base (MWh).

- This values are not the provisional values entered in the VULCANUS system, but the definitive values after an eventual correction during the actual date.

- Prog_exp: Sum of all positive values of every hour of every border

- Prog_imp: Sum of all negative values of every hour of every border

- Prog_exp3: Sum of all positive values the third Wednesday from 02:00 to 03:00 a.m.

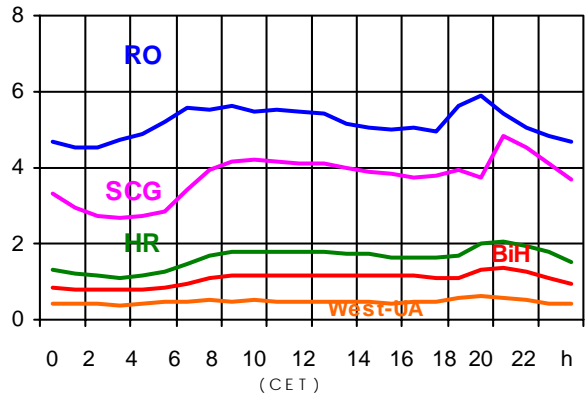
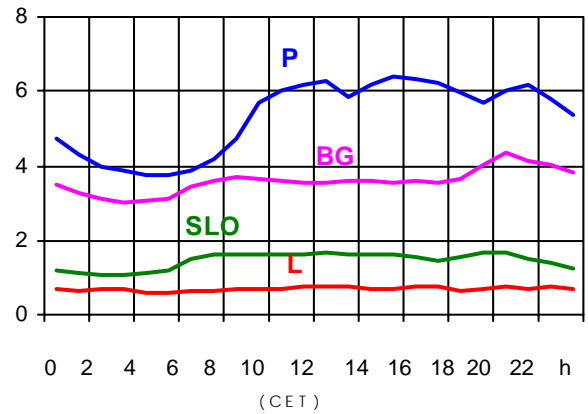
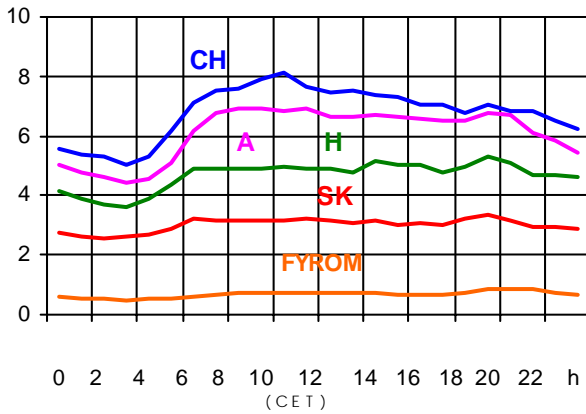
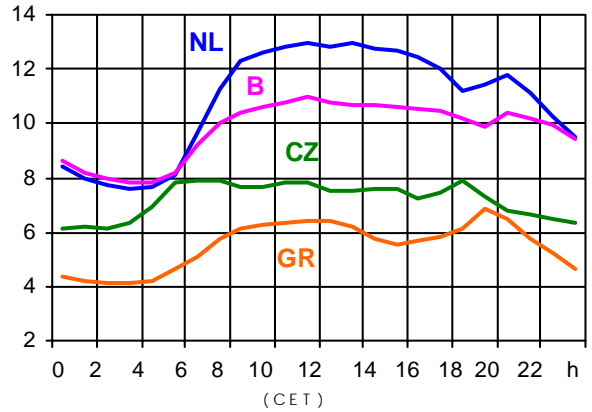
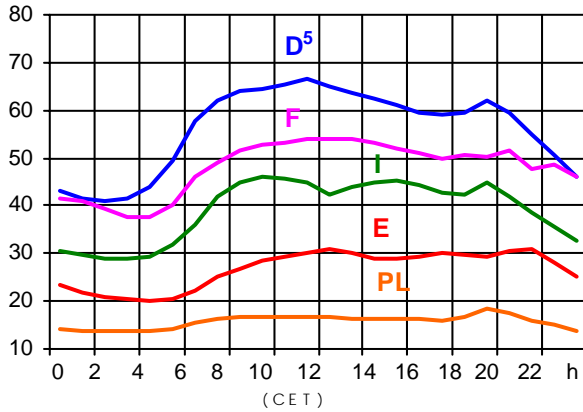
- Prog_imp3: Sum of all negative values the third Wednesday from 02:00 to 03:00 a.m.

- Prog_exp11: Sum of all positive values the third Wednesday from 10:00 to 11:00 a.m.

- Prog_imp11: Sum of all negative values the third Wednesday from 10:00 to 11:00 a.m.

Consumption hourly load curves¹ on 17.09.03

Values in GW



	Peak load MW	Δ % ²	Cons_load_repr ¹ %	Parallel load ³ MW
B	10965	-1,0	100	9866
D	66400	1,1	91	70600
E	30866	6,2	94	29396
F ⁴	54126	0,6	97	60637
GR ⁴	6828	3,3	93	6261
I	45876	-0,6	100	39289
SLO	1663	-1,2	95	1633
HR	2030	6,1	100	1507
BIH	1348	n.a.	100	969
FYROM	866	n.a.	100	668
SCG	4842	n.a.	96	3643
L	776	-4,2	99	728
NL	12990	4,1	90	10555
A	6942	-8,1	82	7402
P	6365	13,8	91	5233
CH	8116	-2,1	100	9928
CZ	7908	8,0	100	9256
H	5283	0,7	100	3751
PL	18387	0,3	100	18670
SK	3380	-0,9	100	3246
UCTE	298408	1,3		303383
DK ⁶				2650
RO	5885	n.a.	100	5512
BG	4375	n.a.	100	4633
West-UA	642	n.a.	100	949

¹ Percentage as referred to total values in %

² Variation as compared to corresponding month of the previous year

³ Including autoproduction

⁴ The representativity of data referring to the whole country, including the systems of the Greek islands, is 93%. The representativity of data to the interconnected system is 99%.

⁵ Values estimated on the basis of former data from the German Federal Office for Statistics

⁶ Denmark (Jutland)



Contact

Boulevard Saint-Michel, 15
B-1040 Brussels - Belgium
Tel +3227416940 - Fax +3227416949

info@ucte.org
www.ucte.org