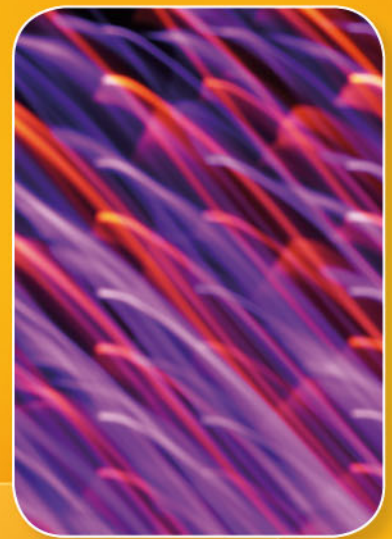


UCTE



August 2007

Monthly provisional values
union for the co-ordination of transmission of electricity

Table of contents		Page
1	Electricity supply situation of the countries	2
2	Physical energy flows	3
3	Monthly consumption	4
4	Monthly consumption variation	6
5	Consumption of the last 12 months	8
6	Variation of the last 12 months' consumption	10
7	Load flows (night)	12
8	Load flows (day)	13
9	Unavailability of international tie lines (major events)	14
10	Network reliability (major events)	16
11	Scheduled exchanges	17
12	Load on the 3 rd Wednesday	18

General remarks and abbreviations used in the tables

- All values of production and consumption in chapter 1, 3&4, 5&6 and 12 are calculated to represent 100% of the national values.
- DK_W Denmark West represents the Western part of Denmark synchronously interconnected with UCTE (Jutland and Funen).
- UA_W Ukraine West represents the so-called Burshtyn Island synchronously interconnected with UCTE.
- CET Central European Time
- The Bulgarian values of production and consumption are gross values.

Countries	Net production in GWh							Exchange balance in GWh	Pump in GWh	Consumption in GWh			
	Therm. nuclear	Therm. conv.	Hydro prod	Other renew.	Of which wind	Not identify	Total			monthly	var. [%]	last 12 months	var. [%]
AT	0	1365	3121	0	0	574	5060 ¹	340	221	5179	1,0	66462	0,1
BA	0	723	237	0	0	0	960	-86	0	874	1,5	10970	-2,0
BE ²	3993	2375	142	240	25	0	6750 ¹	384	149	6985	2,6	88705	-1,3
BG	1013	1878	0	0	0	0	2891	-508	44	2339	-5,9	33126	-9,3
CH	1378	157	4280	77	1	0	5892 ¹	-921	208	4763	1,5	62228	-2,2
CZ	2011	4186	119	16	5	0	6332 ¹	-1520	24	4788	2,1	63432	-1,6
DE	9393	28833	2255	3828	1825	0	44309 ¹	1095	785	44619	2,2	557474	-0,8
ES	3981	13281	2209	2680	2296	0	22151 ¹	-314	366	21471	2,0	263130	2,1
FR	32610	2125	5034	582	278	0	40351 ¹	-7048	430	32873	4,7	467327	-3,7
GR	0	4303	315	119	104	0	4737 ¹	519	86	5170	-0,2	55179	2,6
HR	0	608	254	3	3	0	865 ¹	589	21	1433	5,3	16723	-1,9
HU ³	1177	1803	0	0	0	0	2980 ¹	385	0	3365	4,8	40933	1,3
IT	0	19043	3473	770	337	0	23286 ¹	2961	496	25751	3,6	338196	0,6
LU	0	171	70	12	4	0	253	320	90	483	6,6	6748	2,7
ME	0	0	82	0	0	0	82	303	0	385	n.a.	3057	n.a.
MK	0	356	52	0	0	0	408 ¹	117	0	525	-10,1	8200	-2,1
NL	334	6366	0	576	192	0	7276 ¹	1941	0	9217	-0,2	116328	0,4
PL	0	11261	148	42	31	0	11451 ¹	-191	68	11192	6,3	139127	2,8
PT	0	2258	513	565	382	0	3336 ¹	712	33	4015	0,2	51095	1,0
RO	502	2642	1072	0	0	0	4216 ¹	141	15	4342	3,0	53379	1,7
RS	0	2152	531	0	0	0	2683	86	57	2712	n.a.	25658	n.a.
SI	495	407	226	0	0	0	1128	-55	0	1073	5,0	13417	2,6
SK	1078	521	271	21	0	0	1891 ¹	197	15	2073	0,4	27097	-0,1
DK_W	0	1040	2	478	370	0	1520 ¹	242	0	1762	2,1	21651	-0,2
UCTE⁴	57965	107854	24406	10009	5853	574	200808¹	-311	3108	197389	3,7	2544033	0,3
UA_W	0	694	5	0	0	0	699 ¹	-388	0	311	9,9	4171	-4,7

¹ Including deliveries from industry

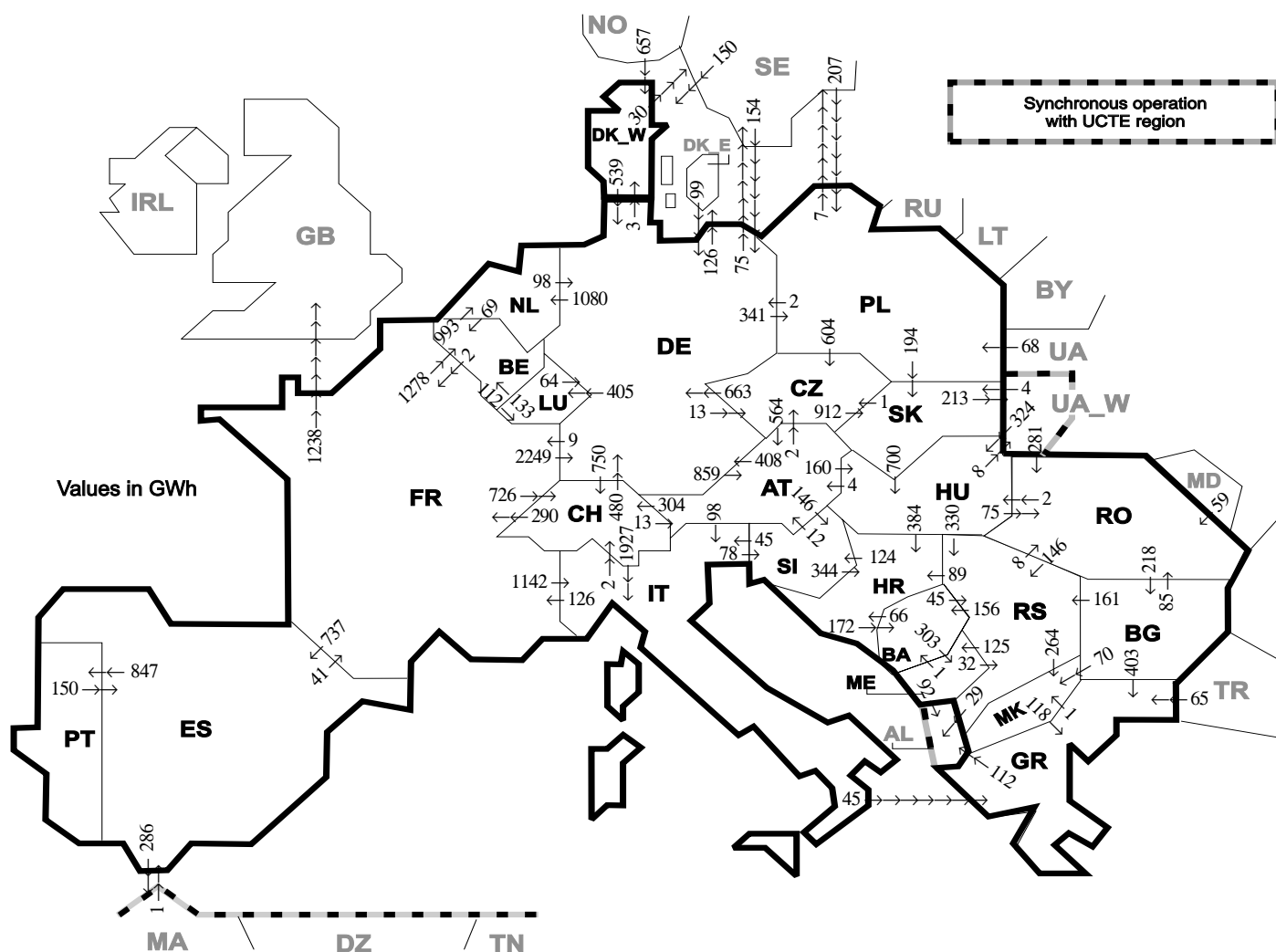
² The reported figures are best estimates based on actual measurements and extrapolations

³ Data on hydro, other renewable, not clearly identifiable production are not yet available

⁴ From June 2007 on including DK_W

All representativities of the national production and consumption values used to calculate values at a representativity of 100% as stated in the table above

Countries	AT	BA	BE	BG	CH	CZ	DE	ES	FR	GR	HR	HU	IT	LU	ME	MK	NL	PL	PT	RO	RS	SI	SK	DK_W	UA_W
Production																									
Therm.nuclear	100	100	100	100	100	100	100	100	100	100	100	100	100	100	100	100	100	100	100	100	100	100	100	100	100
Thermal conv.	100	100	100	100	100	100	100	97	100	100	100	100	100	100	100	100	100	100	95	100	100	100	100	100	100
Hydro prod	100	100	100	100	100	100	100	100	100	100	100	100	100	100	100	100	100	100	100	100	100	100	100	100	100
Other renew.	100	100	100	100	100	100	100	95	100	100	100	100	100	100	100	100	100	100	100	100	100	100	100	100	100
Not identify	100	100	100	100	100	100	100	100	100	100	100	100	100	100	100	100	100	100	100	100	100	100	100	100	100
Consumption	100	100	100	100	100	100	100	98	100	100	100	100	100	100	100	100	100	100	97	100	100	95	100	100	100



Exporting countries	AT	BA	BE	BG	CH	CZ	DE	ES	FR	GR	HR	HU	IT	LU	ME	MK	NL	PL	PT	RO	RS	SI	SK	DK_W	UA_W	Other III ¹	Sum export
AT	-	-	-	-	304	2	408	-	-	-	-	160	98	-	-	-	-	-	-	-	-	146	-	-	-	-	1118
BA	-	-	-	-	-	-	-	-	-	-	66	-	-	-	303	-	-	-	-	-	-	-	-	-	-	-	414
BE	-	-	-	-	-	-	-	-	2	-	-	-	112	-	-	993	-	-	-	-	-	-	-	-	-	-	1107
BG	-	-	-	-	-	-	-	-	-	403	-	-	-	-	70	-	-	-	85	161	-	-	-	-	-	0	719
CH	13	-	-	-	-	-	480	-	290	-	-	1927	-	-	-	-	-	-	-	-	-	-	-	-	-	2710	
CZ	564	-	-	-	-	-	663	-	-	-	-	-	-	-	-	-	0	-	-	-	-	912	-	-	-	2139	
DE	859	-	-	-	750	13	-	-	9	-	-	405	-	-	1080	341	-	-	-	-	-	-	3	201	-	3661	
ES	-	-	-	-	-	-	-	-	41	-	-	-	-	-	-	-	-	-	847	-	-	-	-	-	-	286	1174
FR	-	-	1278	-	726	-	2249	737	-	-	-	1142	-	-	-	-	-	-	-	-	-	-	-	-	-	1238	7370
GR	-	-	-	0	-	-	-	-	-	-	-	-	0	-	-	1	-	-	-	-	-	-	-	-	-	-	113
HR	-	172	-	-	-	-	-	-	-	-	-	0	-	-	-	-	-	-	-	-	0	124	-	-	-	-	296
HU	4	-	-	-	-	-	-	-	-	-	384	-	-	-	-	-	-	-	-	75	330	0	-	8	-	-	801
IT	0	-	-	-	2	-	-	-	126	45	-	-	-	-	-	-	-	-	-	-	-	78	-	-	-	-	251
LU	-	-	133	-	-	-	64	-	-	-	-	-	-	-	-	-	-	-	-	-	-	-	-	-	-	-	197
ME	-	1	-	-	-	-	-	-	-	-	-	-	-	-	-	-	-	-	-	-	-	32	-	-	-	92	125
MK	-	-	-	0	-	-	-	-	-	-	-	-	-	-	-	-	-	-	-	-	-	0	-	-	-	-	118
NL	-	-	69	-	-	-	98	-	-	-	-	-	-	-	-	-	-	-	-	-	-	-	-	-	-	-	167
PL	-	-	-	-	604	2	-	-	-	-	-	-	-	-	-	-	-	-	-	-	-	194	-	-	-	-	807
PT	-	-	-	-	-	-	-	150	-	-	-	-	-	-	-	-	-	-	-	-	-	-	-	-	-	-	150
RO	-	-	-	218	-	-	-	-	-	-	-	2	-	-	-	-	-	-	-	-	146	-	-	-	0	0	366
RS	-	156	-	0	-	-	-	-	-	-	89	0	-	-	125	264	-	-	-	8	-	-	-	-	-	29	671
SI	12	-	-	-	-	-	-	-	-	-	344	45	-	-	-	-	-	-	-	-	-	-	-	-	-	-	401
SK	-	-	-	-	-	1	-	-	-	-	-	700	-	-	-	-	-	-	-	-	-	-	-	213	-	-	914
DK_W	-	-	-	-	-	-	539	-	-	-	-	-	-	-	-	-	-	-	-	-	-	-	-	-	30	569	
UA_W	-	-	-	-	-	-	-	-	-	-	-	324	-	-	-	-	-	-	-	-	-	-	4	-	-	-	609
Other III ¹	-	-	-	0	-	-	253	1	0	65	-	-	-	-	0	-	-	275	-	59	0	-	-	807	-	-	1460
Sum imp	1452	329	1480	218	1782	620	4756	888	468	631	883	1186	3212	517	428	335	2073	616	847	508	714	348	1110	810	221	1995	28427

Sum of physical energy flows between UCTE countries = 24142GWh Total physical energy flows = 28427GWh

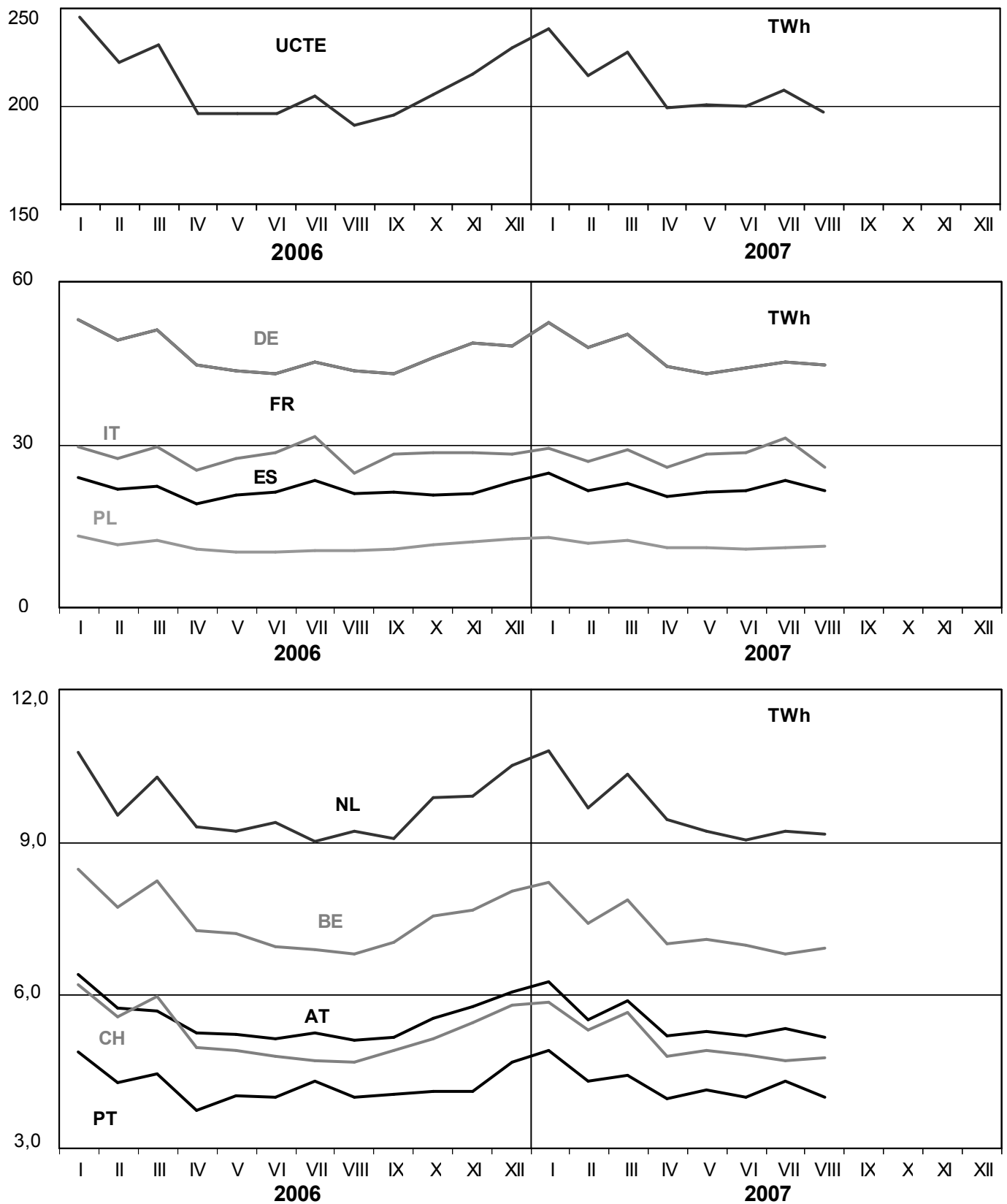
¹ Other III: Albania, Belarus, Denmark East, Great Britain, Morocco, Republic of Moldavia, Norway, Sweden, Republic of Turkey and Ukraine

These physical energy flows were measured on the cross-frontier transmission lines (≤ 110 kV) listed in table 9 of the Statistical Yearbook. These values may differ from the official statistics and the exchange balances in chapter 1.

3

Monthly consumption

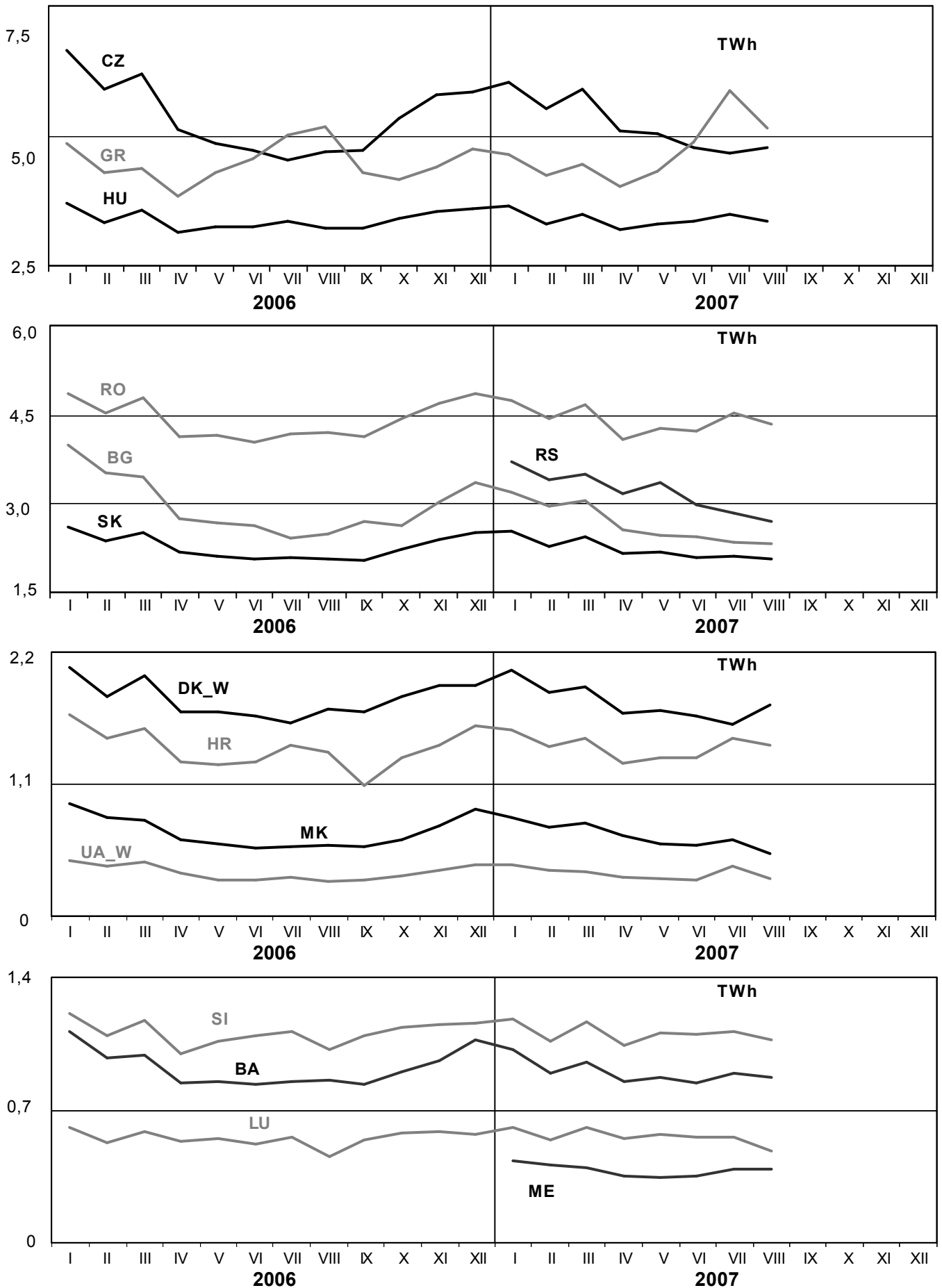
August 2007



3

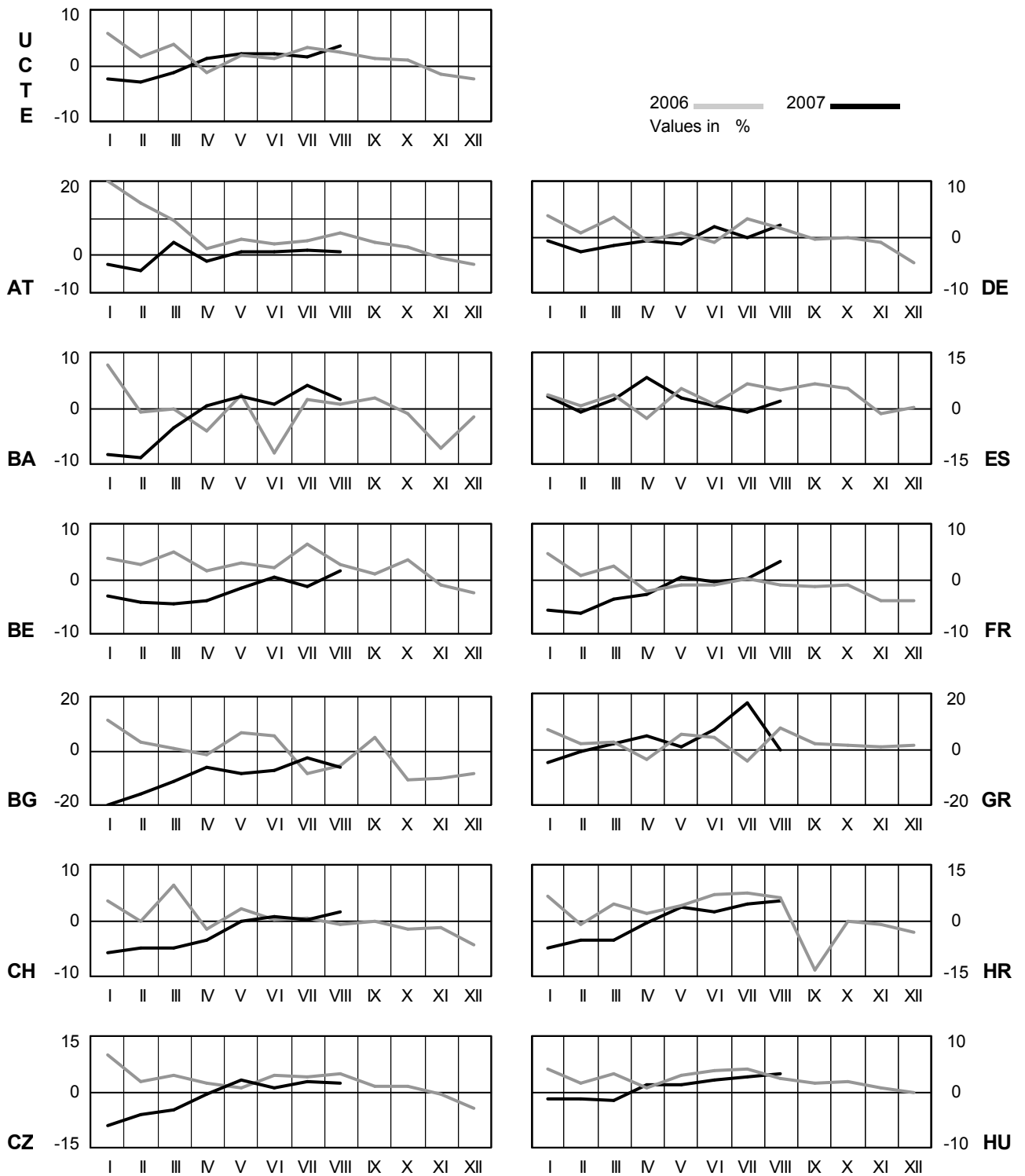
Monthly consumption

August 2007



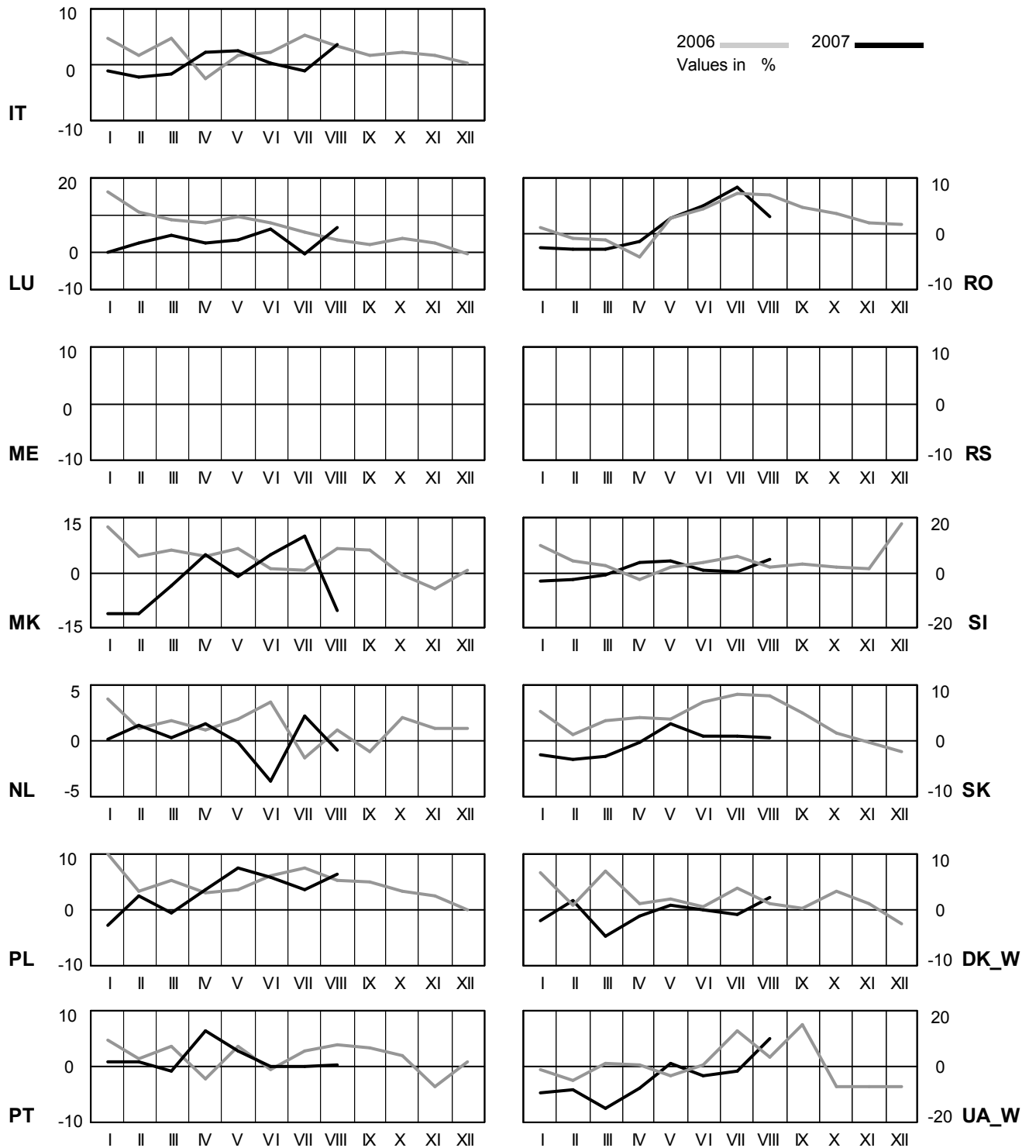
4 Monthly consumption variation

August 2007



4 Monthly consumption variation

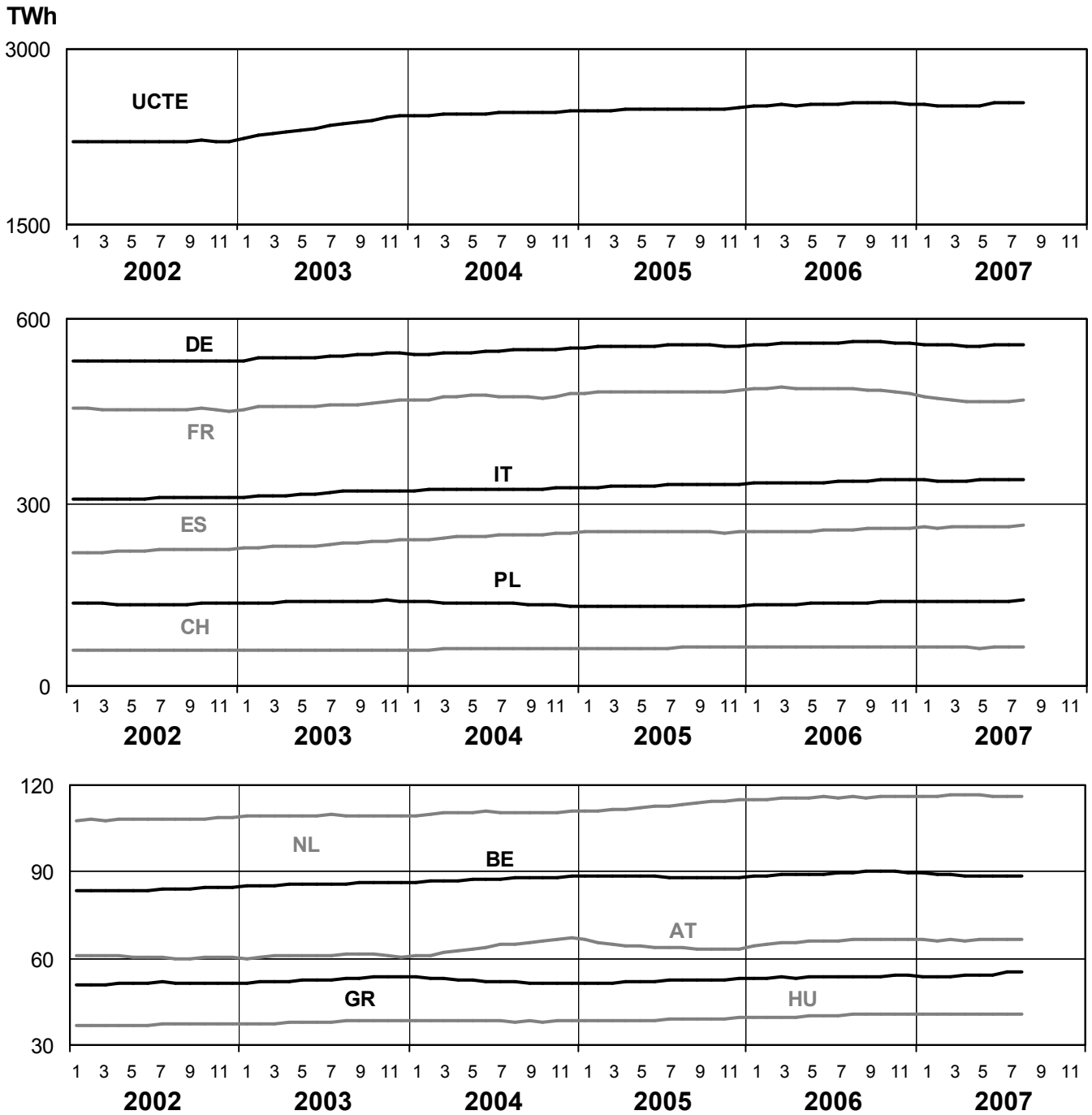
August 2007



5

Consumption of the last 12 months

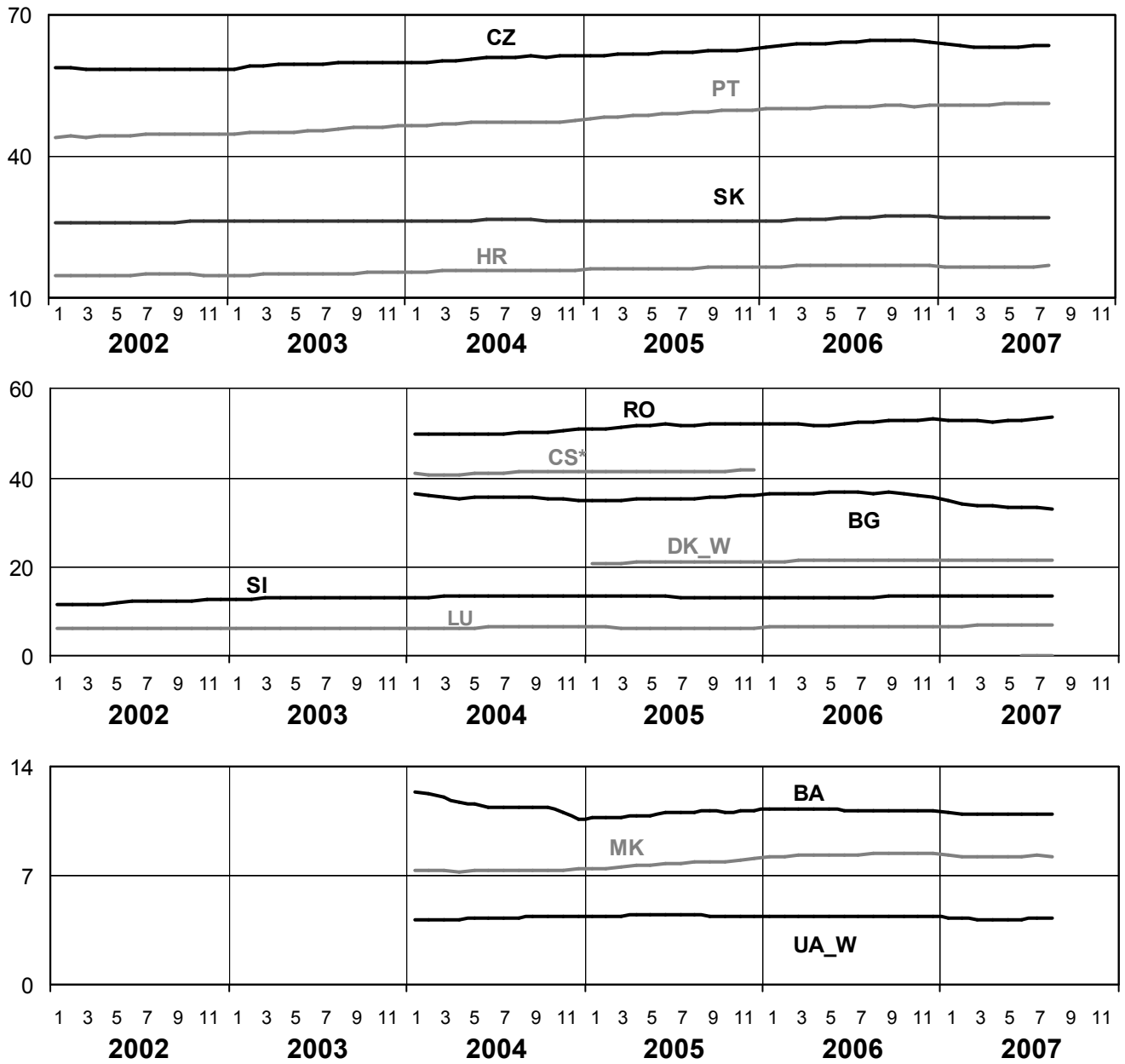
August 2007



5

Consumption of the last 12 months

August 2007

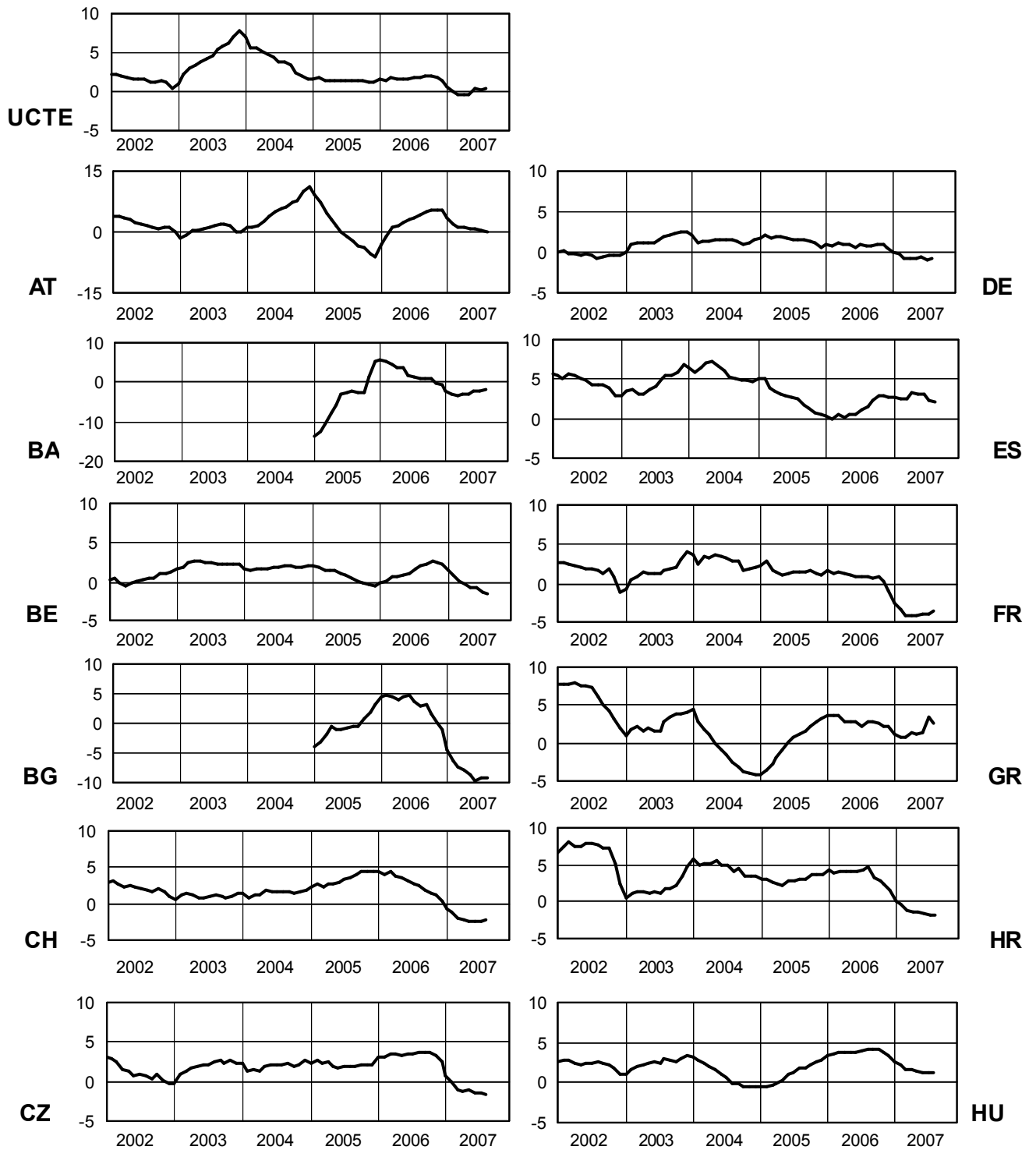


* CS consumption values until December 2006; from 2007 on ME and RS as separate countries

6

Variation of the last 12 months' consumption in %

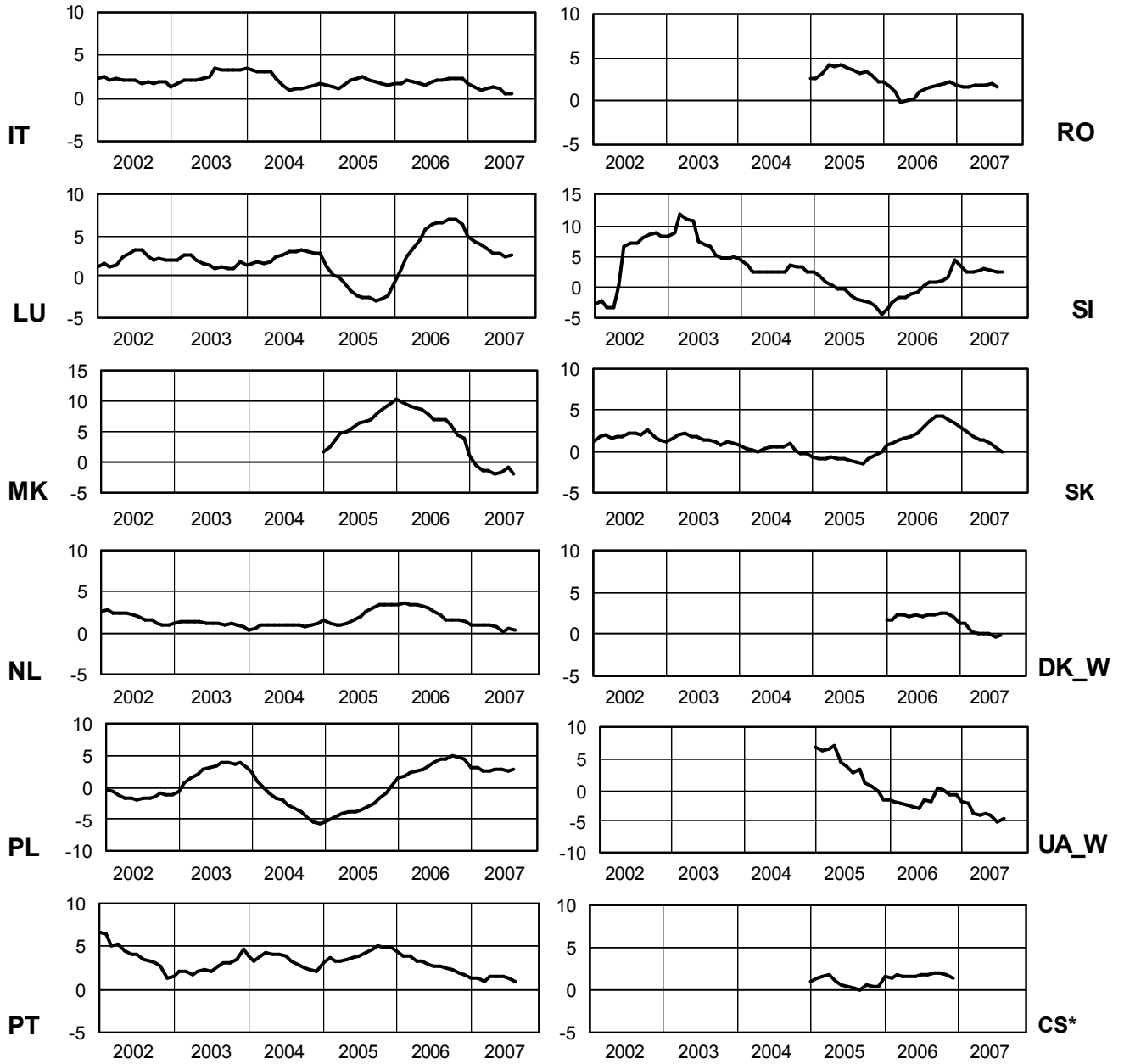
August 2007



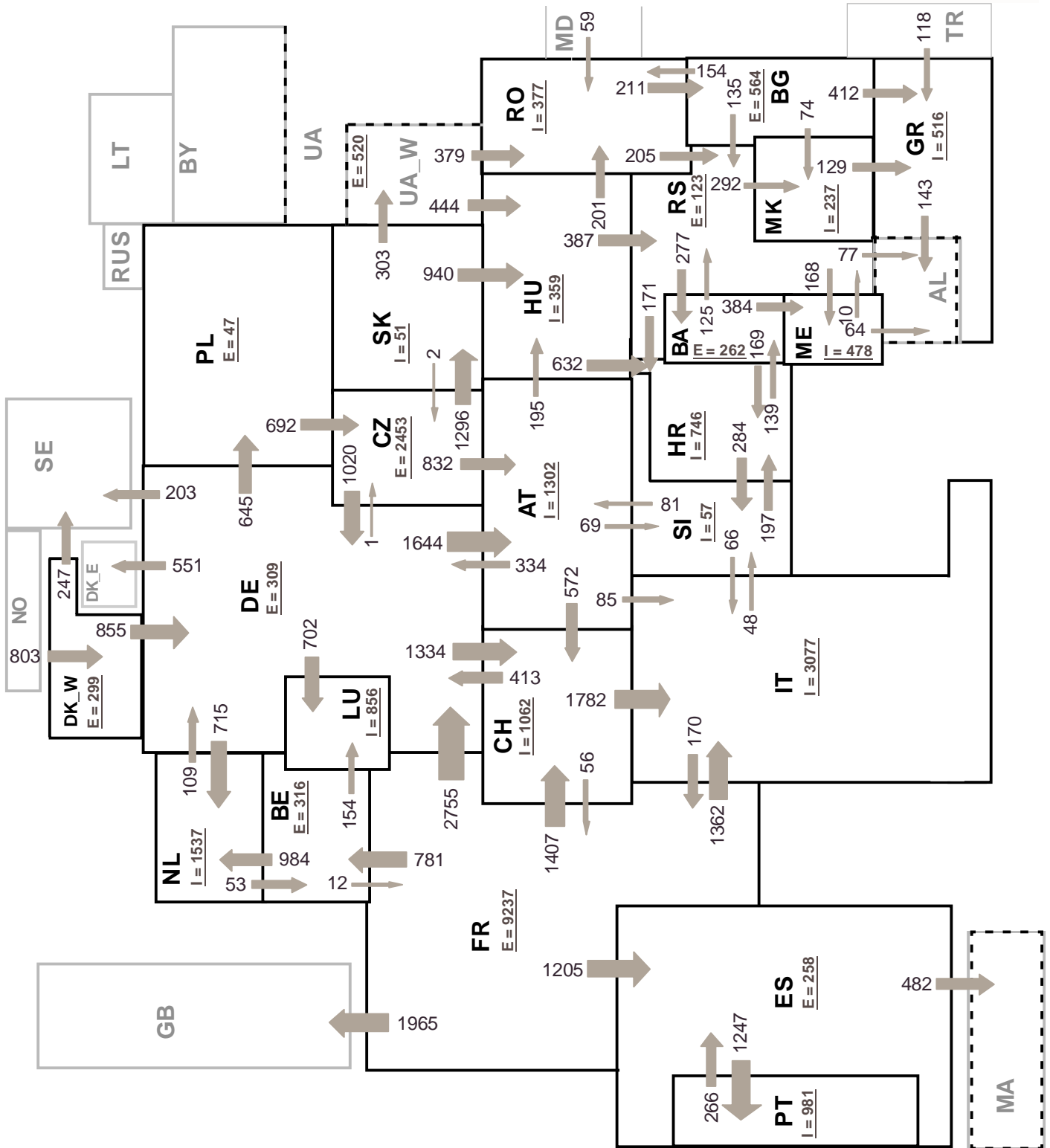
6

Variation of the last 12 months' consumption in %

August 2007



* CS consumption values until December 2006; from 2007 on ME and RS as separate countries



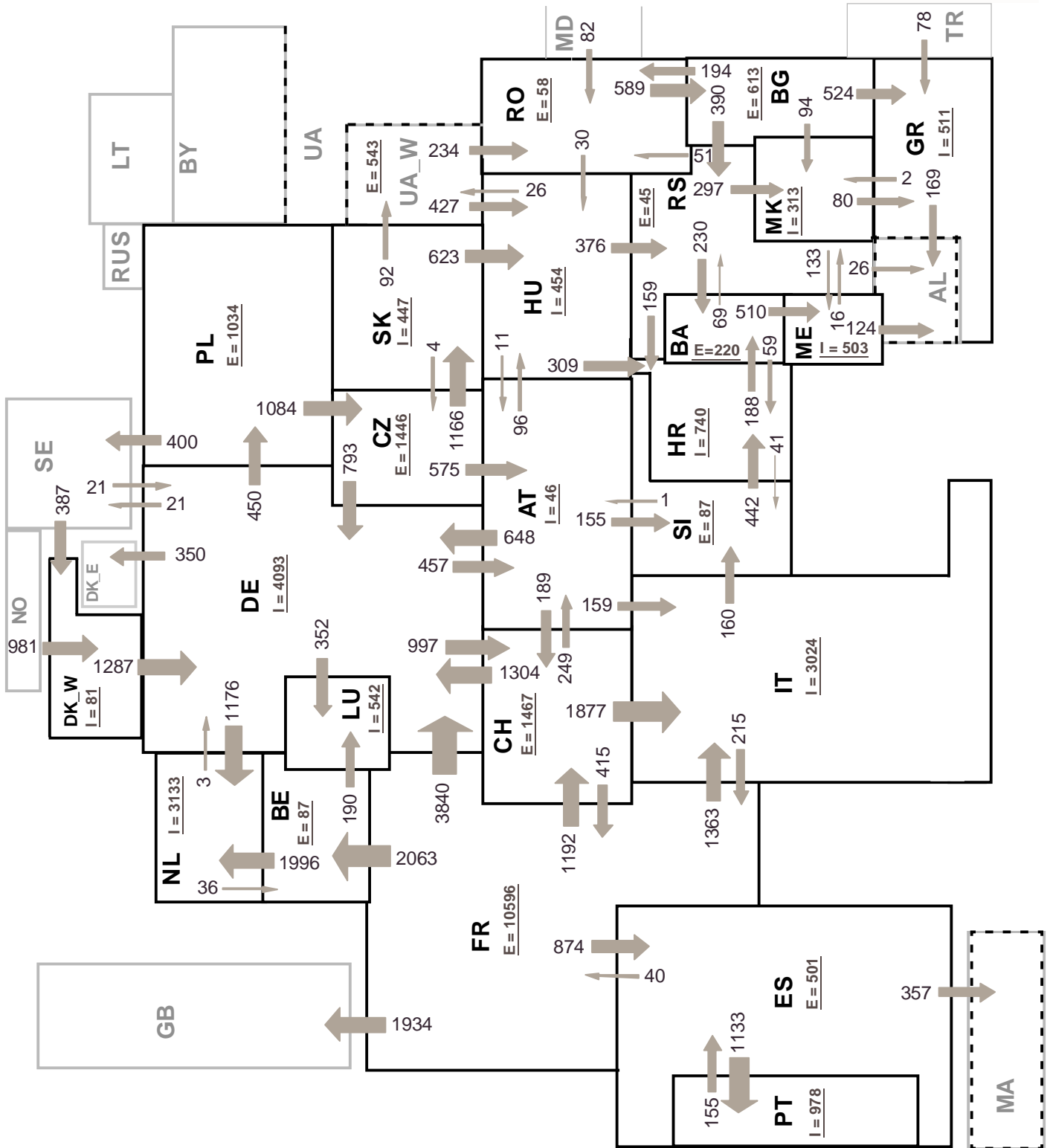
Sum of load flows in MW

UCTE = 29467 MW

Total = 35099 MW

Synchronous operation with UCTE region

I = Import balance
E = Export balance



Sum of load flows in MW

UCTE = 32603 MW

Total = 37820 MW

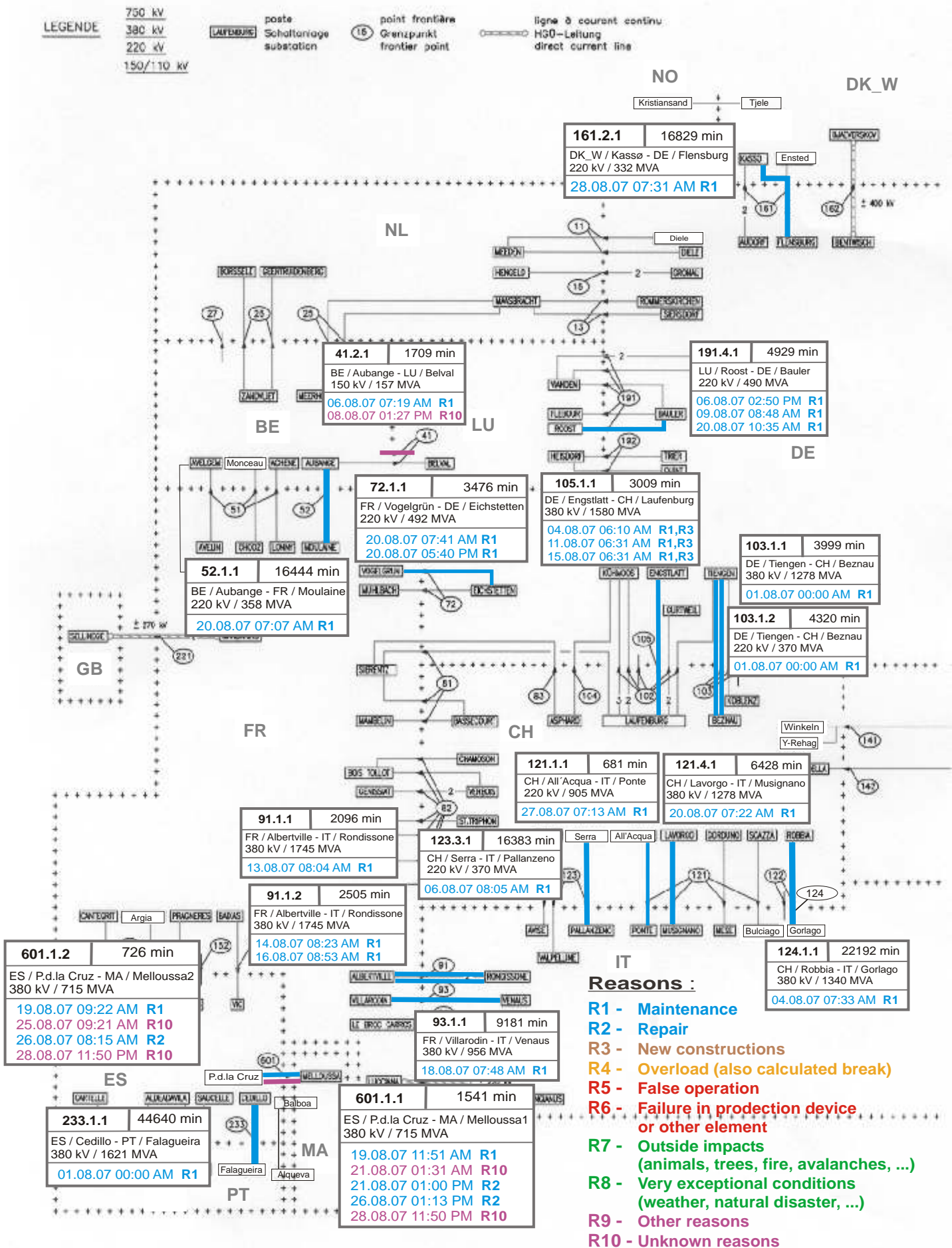
Synchronous operation with UCTE region

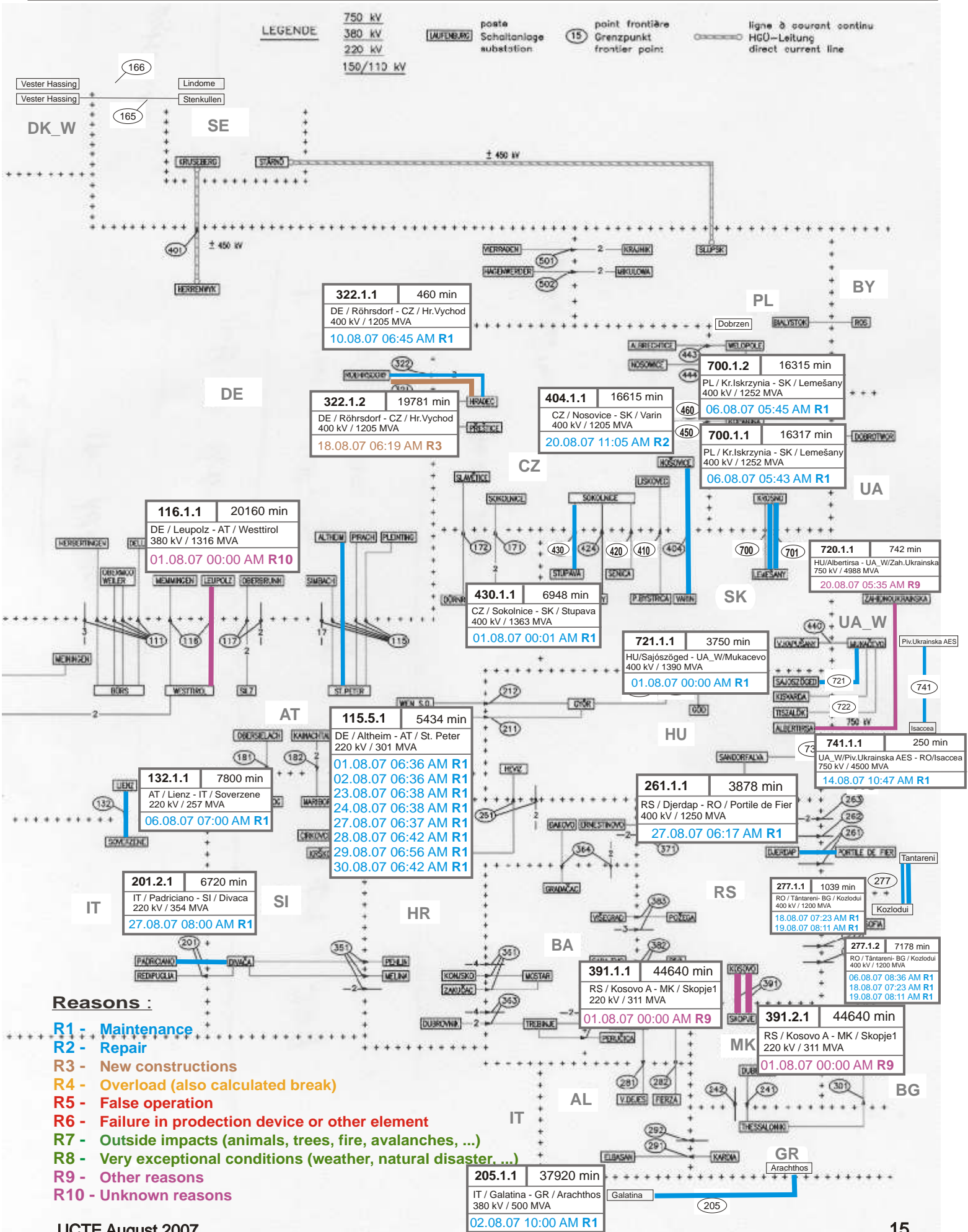
I = Import balance
E = Export balance

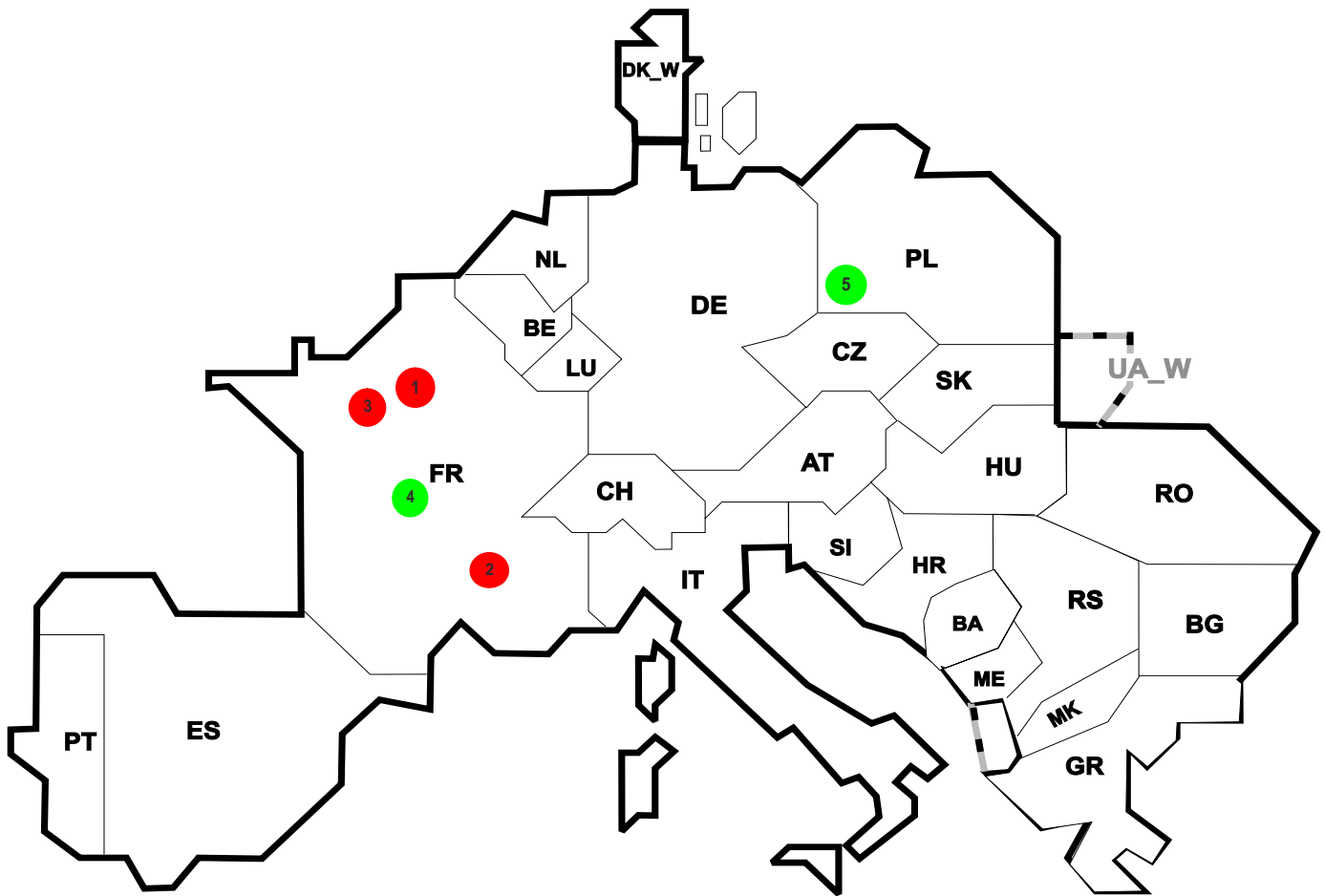
9

Unavailability of international tie lines (major events with sum over 250 minutes)

August 2007







Reasons:

R4 Overload (also calculated break)

R5 False operation

R6 Failure in protection device or other element

R7 Outside impacts (animals, trees, fire, avalanches, ...)
(animals, trees, fire, avalanches, ...)

R8 Very exceptional conditions
(weather, natural disaster, ...)

R9 Other reasons

R10 Unknown reasons

No	Country	Substation	Reason	Energy not supplied ² [MWh]	Total loss of power [MW]	Restoration time [min]	Equivalent time of interruption ¹
1	FR	Villejust	R6	20	62	20	0,022
2	FR	Pariset	R6	9	42	13	0,010
3	FR	Cergy	R6	2	23	4	0,002
4	FR	Malintrat	R7	2	3	30	0,002
5	PL	Mikulow a	R7	0	668	244	0,000

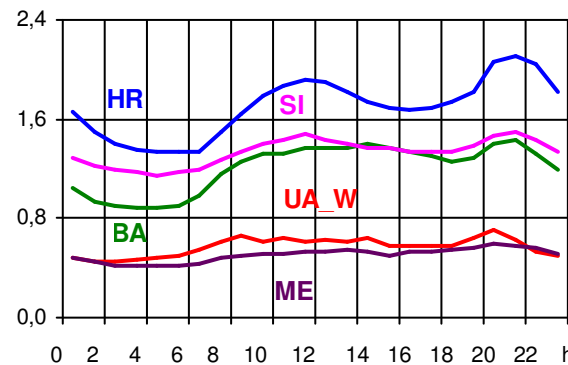
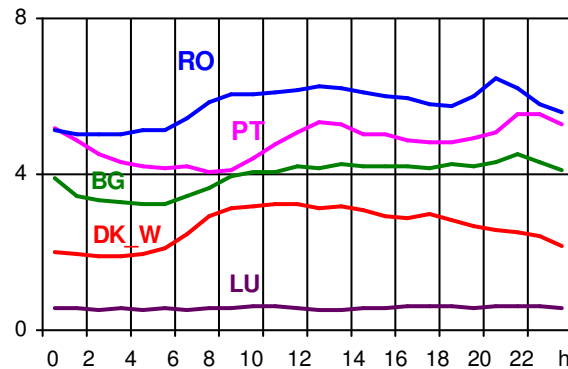
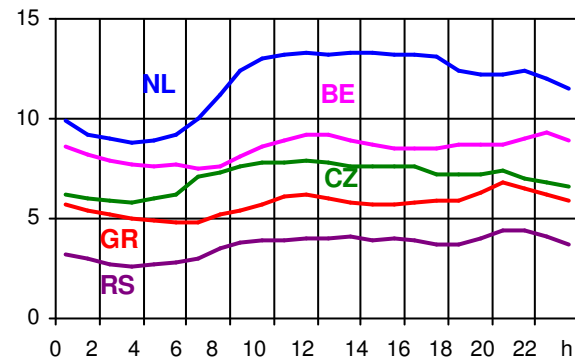
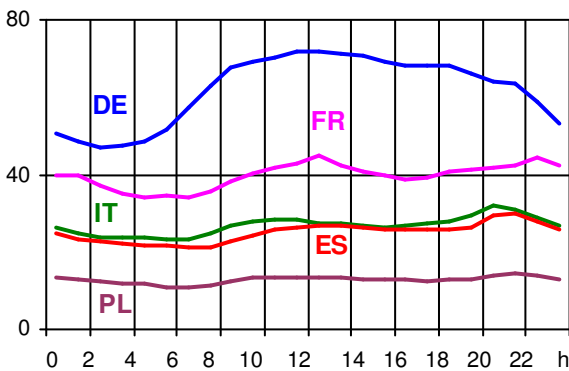
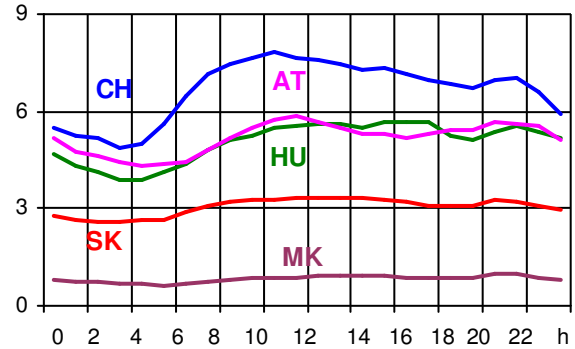
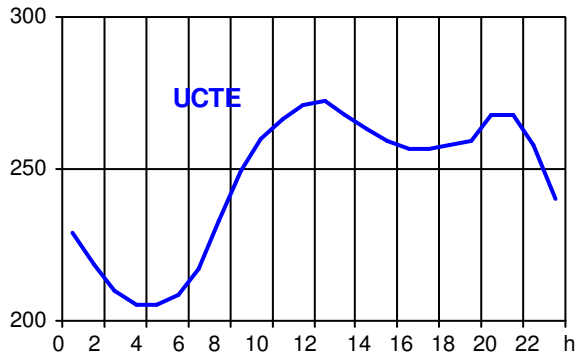
¹ (year [in min] * energy not supplied) / consumption last 12 months

Control area	Export Programs	Import Programs	Export Programs at 03:00	Import Programs at 03:00	Export Programs at 11:00	Import Programs at 11:00
AT	618182	978218	1443	735	1292	693
BA	436536	353835	310	170	396	170
BE	832814	1184600	565	398	1401	1497
BG	n.a.	n.a.	n.a.	n.a.	n.a.	n.a.
CH	2881328	1964528	1582	2657	4308	2867
CZ	2212492	667577	3093	611	2623	1123
DE	2286134	2954395	2593	3073	2347	5561
ES	1063305	757259	1498	1200	1274	1100
FR	7786879	893527	10070	862	10967	378
GR	25385	544893	0	577	0	537
HR	313981	900103	446	1184	447	1185
HU	855882	1240788	1148	1523	1177	1632
IT	251494	3210706	218	3295	375	3400
ME	185223	490778	160	579	160	665
MK	29000	248500	0	221	30	353
NL	138732	2043914	410	1945	0	3136
PL	400108	297306	20	57	900	0
PT	519	714508	0	1000	0	1000
RO	183246	328787	173	547	338	272
RS	453650	435925	579	495	688	649
SI	510106	450596	621	552	613	499
SK	795631	928245	953	936	656	1048
DK_W	853112	528526	797	938	1595	1214
UA_W	426769	43220	606	89	588	43

- Control areas can differ from national borders (i.e. German block which includes parts of AT, LU and DK).
- Values are calculated on an hourly base (MWh).
- This values are not the provisional values entered in the VULCANUS system, but the definitive values after an eventual correction during the actual date.
- Export Programs: Sum of all positive values of every hour of every border
- Import Programs: Sum of all negative values of every hour of every border
- Export Programs at 03:00: Sum of all positive values the third Wednesday from 02:00 to 03:00 a.m.
- Import Programs at 03:00: Sum of all negative values the third Wednesday from 02:00 to 03:00 a.m.
- Export Programs at 11:00: Sum of all positive values the third Wednesday from 10:00 to 11:00 a.m.
- Import Programs at 11:00: Sum of all negative values the third Wednesday from 10:00 to 11:00 a.m.

Consumption hourly load curves on 15.08.2007 CET

Values in GW



	Highest load MW	var.% ¹	Load representativity %
AT	5875	-18,8	100
BA	1429	0,1	100
BE ²	9271	-17,0	100
BG	4516	3,0	100
CH	7851	-3,7	100
CZ	7875	6,2	100
DE	71687	1,5	91
ES	29889	0,1	98
FR	44765	-6,9	100
GR	6781	-12,3	100
HR	2109	-7,2	100
HU	5690	7,4	100
IT	32026	-4,1	100
LU	634	-4,5	100
ME	601	-	100
MK	985	2,6	100
NL	13298	-2,6	100
PL ⁴	14425	-13,2	100
PT	5546	-6,3	97
RO	6436	0,1	100
RS	4395	-	100
SI	1497	-10,4	95
SK	3342	2,2	100
DK_W	3244	7,7	100
UCTE³	272241	-4,5	
UA_W	709	6,3	100

¹ Variation as compared to corresponding month of the previous year

² The reported figures are best estimates based on actual measurements and extrapolations.

³ From June 2007 on including DK_W

⁴ This 3rd Wednesday there was the holiday in Poland



Contact

Boulevard Saint-Michel, 15
B-1040 Brussels – Belgium
Tel +32 2 741 69 40 – Fax +32 2 741 69 49

info@ucte.org
www.ucte.org