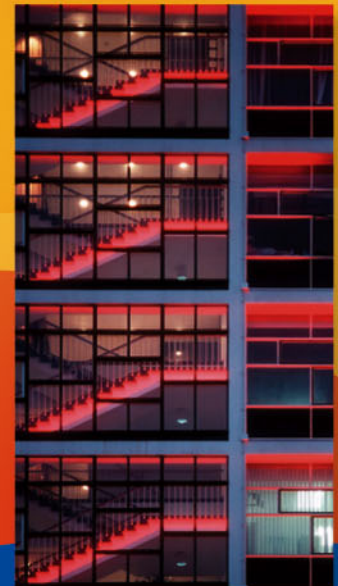
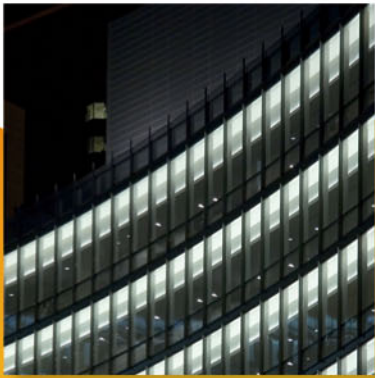


UCTE



August 2006

Monthly provisional values
union for the co-ordination of transmission of electricity

Table of contents		Page
1	Electricity supply situation of the countries	2
2	Physical energy flows	3
3	Monthly consumption	4
4	Monthly consumption variation	6
5	Consumption of the last 12 months	8
6	Variation of the last 12 months' consumption	10
7	Load flows (night)	12
8	Load flows (day)	13
9	Unavailability of international tie lines (major events)	14
10	Network reliability (major events)	16
11	Scheduled exchanges	17
12	Load on the 3 rd Wednesday	18

General remarks and abbreviations used in the tables

- All values of production and consumption in chapter 1, 3&4, 5&6 and 12 are calculated to represent 100% of the national values.
- DK_W Denmark West represents the Western part of Denmark synchronously interconnected with UCTE (Jutland and Funen).
- UA_W Ukraine West represents the so-called Burshtyn Island synchronously interconnected with UCTE.
- CET Central European Time
- The Bulgarian values of production and consumption are gross values.

1

Electricity supply situation of the countries

August 2006

Countries	Net production in GWh							Exchange balance in GWh	Pump in GWh	Consumption in GWh			
	Therm. nuclear	Therm conv.	Hydro prod	Other renew.	Of which wind	Not identify	Total			monthly	var. [%]	last 12 months	var. [%]
AT	0	1175	3658	0	0	725	5558 ¹	-185	243	5130	5,9	66391	4,3
BA	0	739	297	0	0	0	1036	-175	0	861	0,6	11193	1,0
BE ²	3534	2408	122	195	21	0	6259 ¹	689	137	6811	3,2	89719	2,6
BG	1272	1727	252	0	0	0	3251	-730	36	2485	-5,5	36527	3,0
CH	1510	186	3095	87	0	0	4878 ¹	131	317	4692	-0,7	63464	2,1
CS	0	2083	748	0	0	0	2831 ¹	159	51	2939	4,4	42483	2,8
CZ	2025	3623	301	12	4	0	5961 ¹	-1187	84	4690	4,7	64480	3,7
DE	12444	25779	2236	3164	1943	0	43623 ¹	493	781	43335	0,8	558838	0,3
ES	5182	12038	1445	2200	2138	0	20865 ¹	53	411	20994	4,7	257687	4,7
FR	32698	1758	3901	434	179	0	38791	-7072	535	31184	-2,2	483811	0,6
GR	0	4143	491	81	74	0	4715 ¹	511	45	5181	7,6	53762	2,8
HR	0	442	341	2	1	0	785 ¹	593	17	1361	6,1	17047	4,7
HU ³	1291	1356	0	0	0	0	2647 ¹	563	0	3210	3,6	40424	4,1
IT	0	18030	3669	798	360	0	22497 ¹	2923	636	24784	2,9	334289	1,5
LU	0	239	65	9	4	0	313	225	85	453	3,2	6572	6,5
MK	0	359	90	0	0	0	449 ¹	135	0	584	6,8	8374	7,1
NL	327	6778	0	558	161	0	7663 ¹	1388	0	9051	-1,1	115723	2,0
PL	0	10975	206	23	15	0	11204 ¹	-550	124	10530	5,4	135338	4,3
PT	0	2801	347	432	259	0	3580 ¹	356	47	4036	4,7	50934	3,3
RO	479	2405	1654	0	0	0	4538 ¹	-306	16	4216	6,9	52512	1,5
SI	505	320	287	0	0	0	1112	-90	0	1022	2,2	13079	0,5
SK	1393	310	348	1	0	188	2240 ¹	-161	15	2064	7,9	27112	3,6
UCTE	62660	99674	23553	7996	5159	913	194796¹	-2237	3580	189613	1,9	2529759	1,9
DK_W	0	1551	1	301	185	0	1853 ¹	-133	0	1720	0,7	21695	2,2
UA_W	0	616	11	0	0	0	627 ¹	-344	0	283	3,3	4378	-1,7

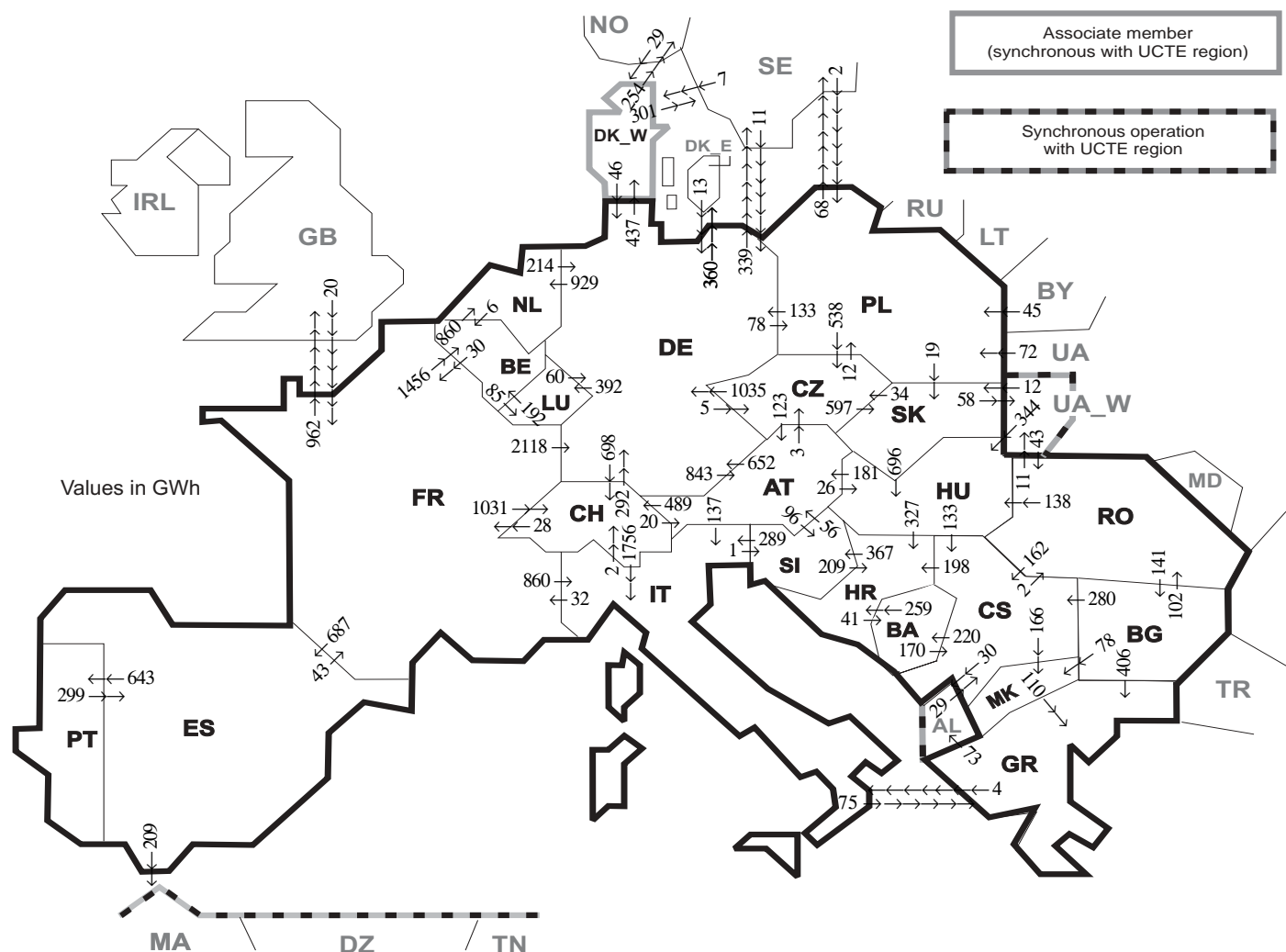
¹ Including deliveries from industry

² The reported figures are best estimates based on actual measurements and extrapolations.

³ Data on hydro, other renewable, not clearly identifiable production are not yet available.

All representativities of the national production and consumption values used to calculate values at a representativity of 100% as stated in the table above

Countries	AT ⁴	BA	BE	BG	CH	CS	CZ	DE	ES	FR	GR	HR	HU	IT	LU	MK	NL	PL	PT	RO	SI	SK	DK_W	UA_W
Production																								
Therm.nuclear	100	100	100	100	100	100	100	100	100	100	100	100	100	100	100	100	100	100	100	100	100	100	100	100
Thermal conv.	100	100	100	100	100	100	100	100	97	100	100	100	100	100	100	100	100	100	95	100	100	100	100	100
Hydro prod	100	100	100	100	100	100	100	100	100	100	100	100	100	100	100	100	100	100	100	100	100	100	100	100
Other renew.	100	100	100	100	100	100	100	100	95	100	100	100	100	100	100	100	100	100	100	100	100	100	100	100
Not identify	100	100	100	100	100	100	100	100	100	100	100	100	100	100	100	100	100	100	100	100	100	100	100	100
Consumption	100	100	100	100	100	100	100	100	98	100	100	100	100	100	100	100	100	100	96	100	95	100	100	100



Exporting countries	Importing countries																				Sum export						
	AT	BA	BE	BG	CH	CS	CZ	DE	ES	FR	GR	HR	HU	IT	LU	MK	NL	PL	PT	RO		SI	SK	DK_W	UA_W	Other III ¹	
AT	-	-	-	-	489	-	3	652	-	-	-	26	137	-	-	-	-	-	-	-	96	-	-	-	-	-	1403
BA	-	-	-	-	-	170	-	-	-	-	-	259	-	-	-	-	-	-	-	-	-	-	-	-	-	-	429
BE	-	-	-	-	-	-	-	-	30	-	-	-	-	-	85	860	-	-	-	-	-	-	-	-	-	-	975
BG	-	-	-	-	-	280	-	-	-	-	406	-	-	-	78	-	-	-	-	-	102	-	-	-	0	866	
CH	20	-	-	-	-	-	-	292	28	-	-	-	1756	-	-	-	-	-	-	-	-	-	-	-	-	2096	
CS	-	220	-	0	-	-	-	-	-	-	-	198	0	-	166	-	-	-	-	-	2	-	-	-	30	616	
CZ	123	-	-	-	-	-	-	1035	-	-	-	-	-	-	-	-	-	12	-	-	-	597	-	-	-	1767	
DE	843	-	-	-	698	-	5	-	0	-	-	-	392	-	929	78	-	-	-	-	-	-	437	-	699	4081	
ES	-	-	-	-	-	-	-	-	43	-	-	-	-	-	-	-	-	-	643	-	-	-	-	-	209	895	
FR	-	-	1456	-	1031	-	-	2118	687	-	-	-	860	-	-	-	-	-	-	-	-	-	-	-	962	7114	
GR	-	-	-	0	-	-	-	-	-	-	-	-	4	-	0	-	-	-	-	-	-	-	-	-	73	77	
HR	-	41	-	-	-	0	-	-	-	-	-	0	-	-	-	-	-	-	-	-	-	367	-	-	-	408	
HU	181	-	-	-	-	133	-	-	-	-	-	327	-	-	-	-	-	-	-	0	0	0	0	0	0	641	
IT	0	-	-	-	2	-	-	-	-	32	75	-	-	-	-	-	-	-	-	-	-	1	-	-	-	110	
LU	-	-	192	-	-	-	-	60	-	-	-	-	-	-	-	-	-	-	-	-	-	-	-	-	-	252	
MK	-	-	-	0	-	0	-	-	-	-	-	110	-	-	-	-	-	-	-	-	-	-	-	-	-	110	
NL	-	-	6	-	-	-	-	214	-	-	-	-	-	-	-	-	-	-	-	-	-	-	-	-	-	220	
PL	-	-	-	-	-	-	538	133	-	-	-	-	-	-	-	-	-	-	-	-	-	19	-	-	68	758	
PT	-	-	-	-	-	-	-	-	299	-	-	-	-	-	-	-	-	-	-	-	-	-	-	-	-	299	
RO	-	-	-	141	-	162	-	-	-	-	-	-	138	-	-	-	-	-	-	-	-	-	-	11	0	452	
SI	56	-	-	-	-	-	-	-	-	-	-	209	289	-	-	-	-	-	-	-	-	-	-	-	-	554	
SK	-	-	-	-	-	34	-	-	-	-	-	696	-	-	-	-	0	-	-	-	-	-	-	58	-	788	
DK_W	-	-	-	-	-	-	46	-	-	-	-	-	-	-	-	-	-	-	-	-	-	-	-	-	555	601	
UA_W	-	-	-	-	-	-	-	-	-	-	-	344	-	-	-	-	-	-	-	-	43	12	-	-	-	399	
Other III ¹	-	-	-	0	-	29	24	0	20	0	-	-	-	-	-	-	-	119	-	0	-	-	36	-	-	228	
Sum imp	1223	261	1654	141	2220	774	580	4574	986	153	591	993	1204	3046	477	244	1789	209	643	147	464	628	473	69	2596	26139	

Sum of physical energy flows between UCTE countries = 22364GWh Total physical energy flows = 26139GWh

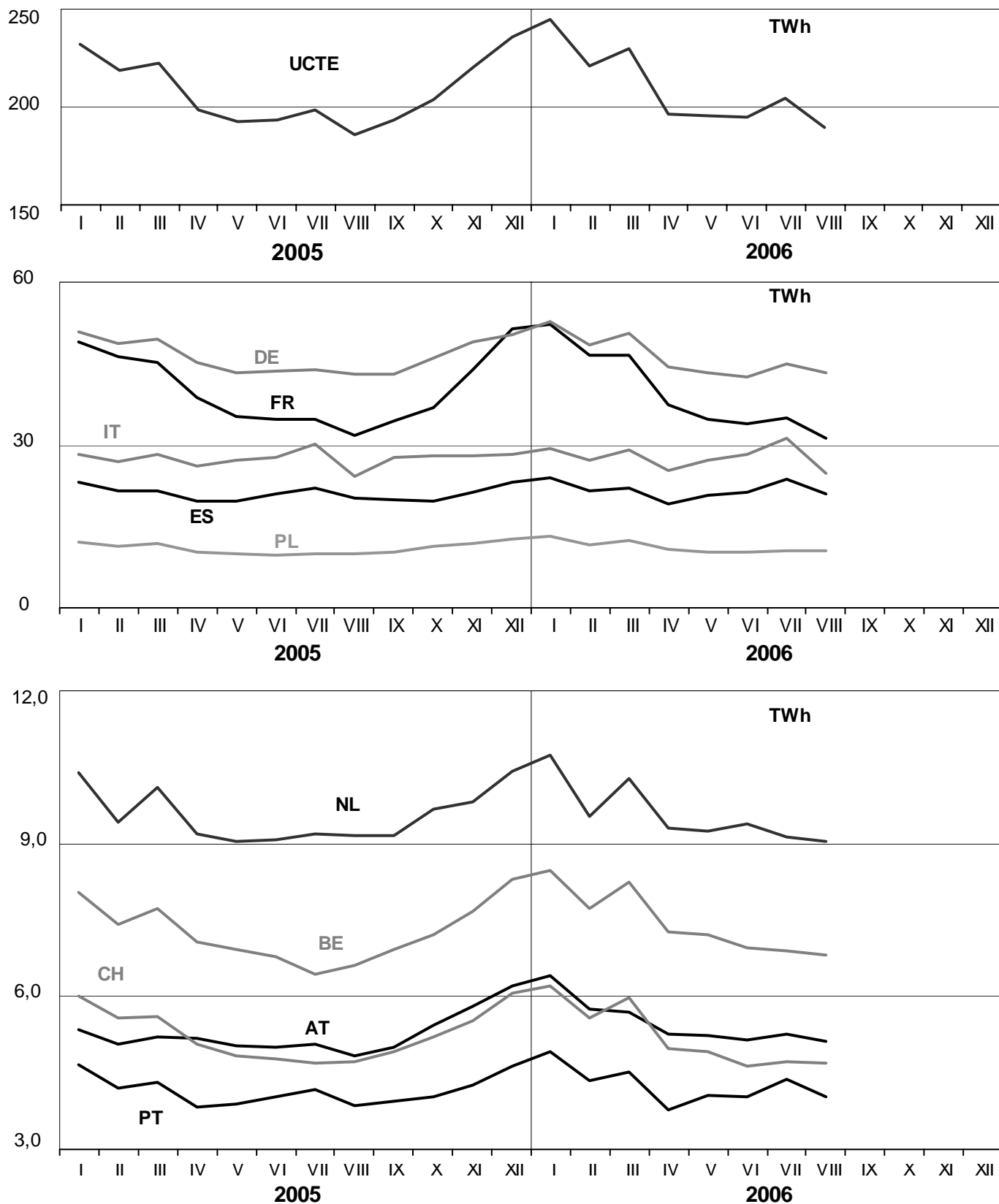
¹ Other III: Albania, Belarus, Denmark East, Great Britain, Morocco, Republic of Moldavia, Norway, Sweden, Republic of Turkey and Ukraina

These physical energy flows were measured on the cross-frontier transmission lines (≤ 110 kV) listed in table 9 of the Statistical Yearbook. These values may differ from the official statistics and the exchange balances in chapter 1.

3

Monthly consumption

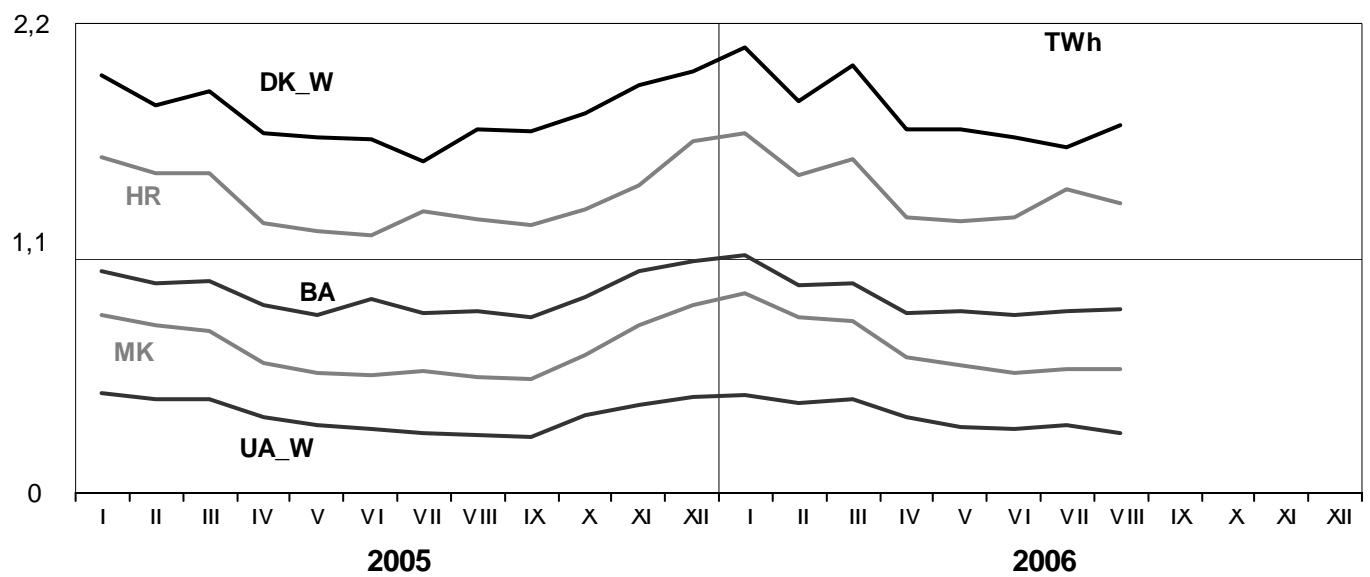
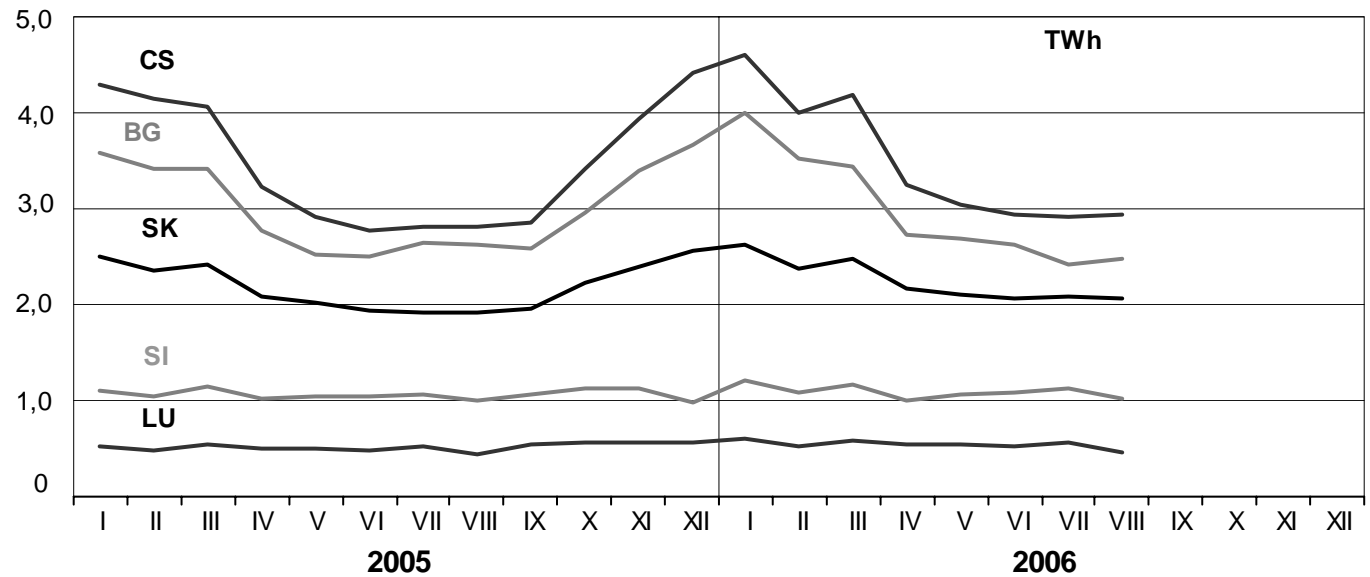
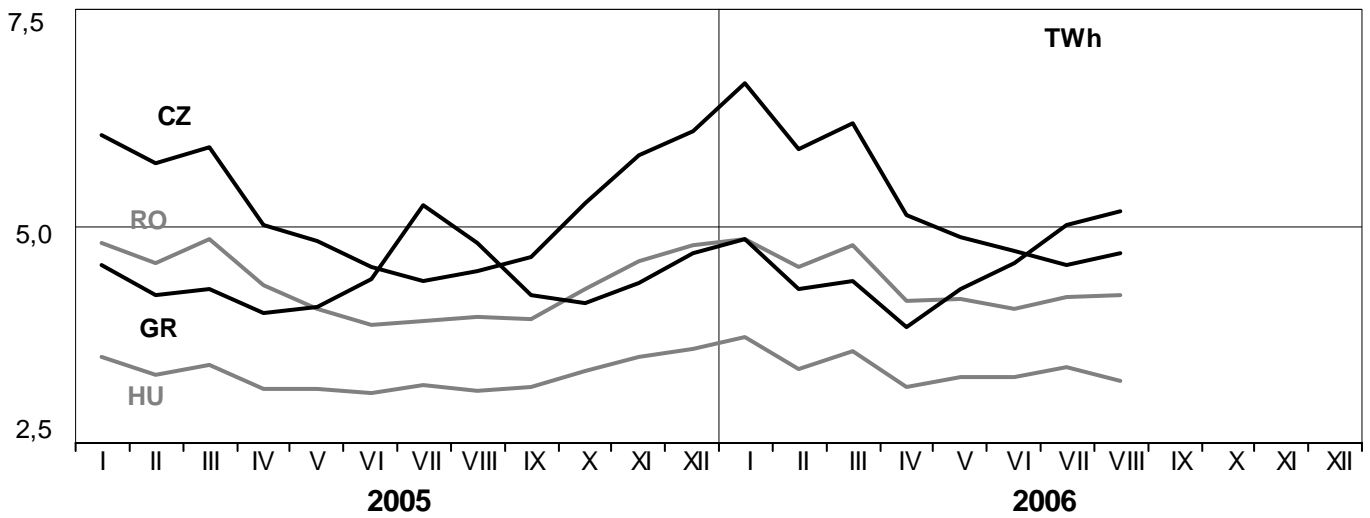
August 2006



3

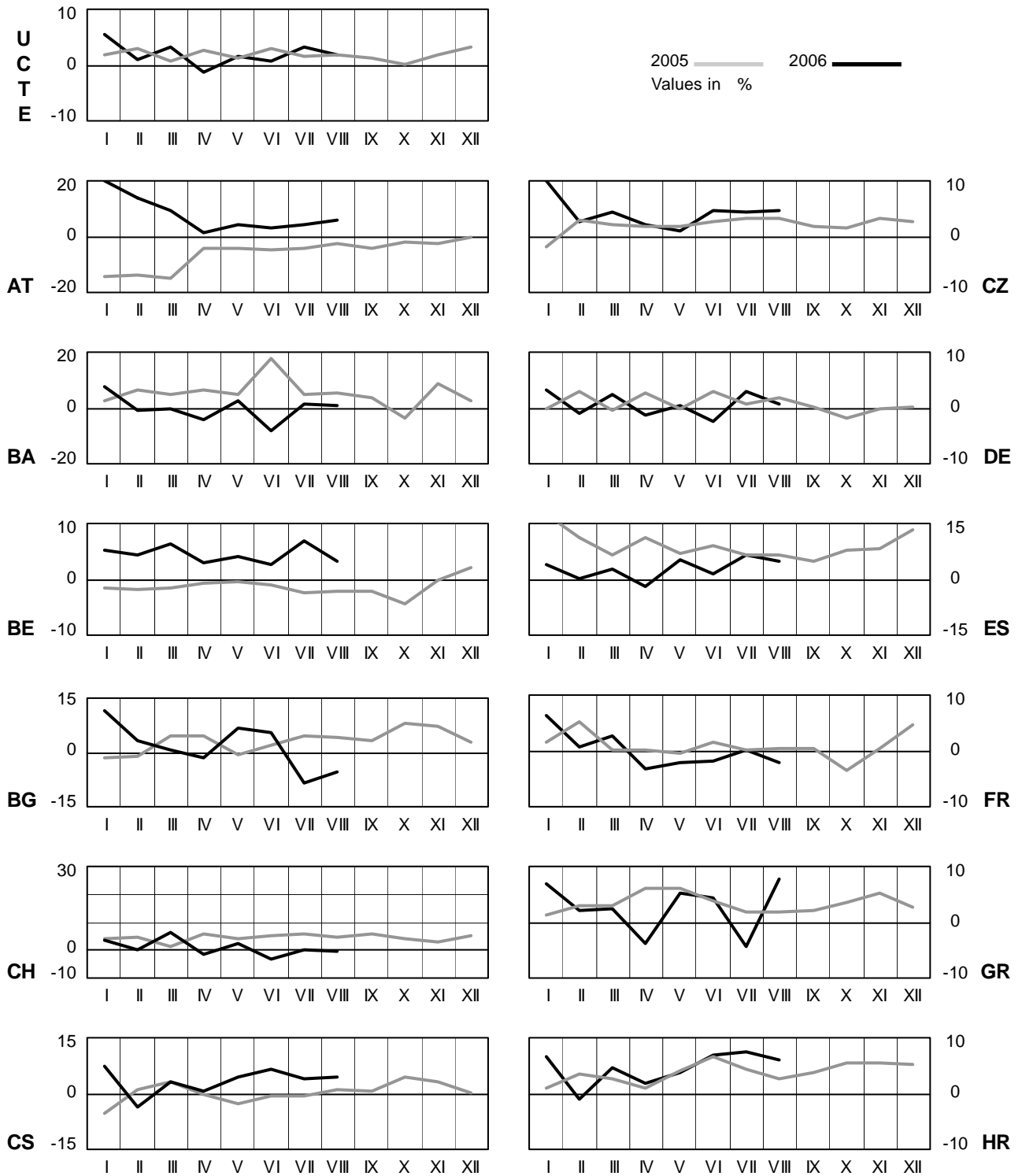
Monthly consumption

August 2006



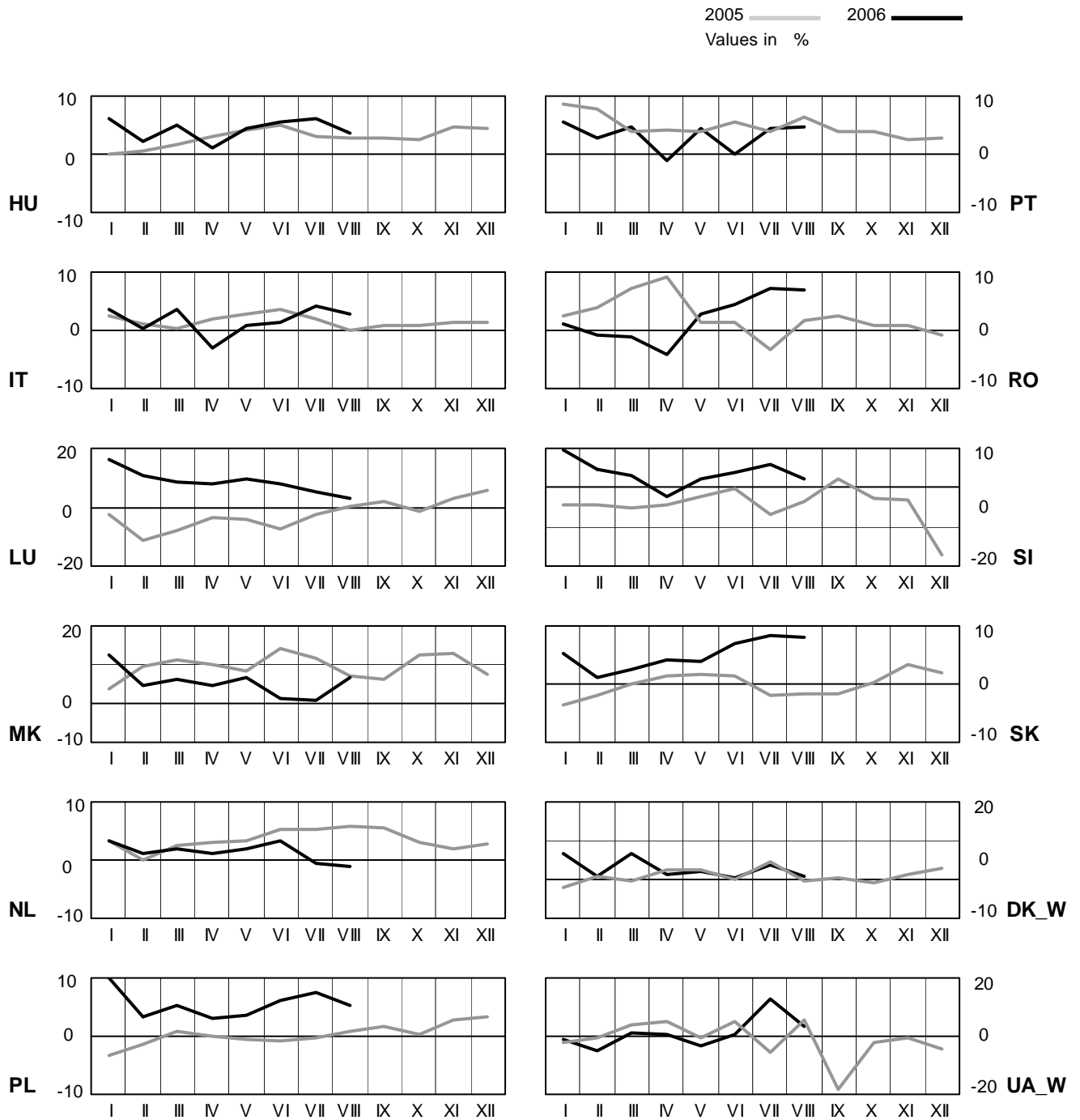
4 Monthly consumption variation

August 2006



4 Monthly consumption variation

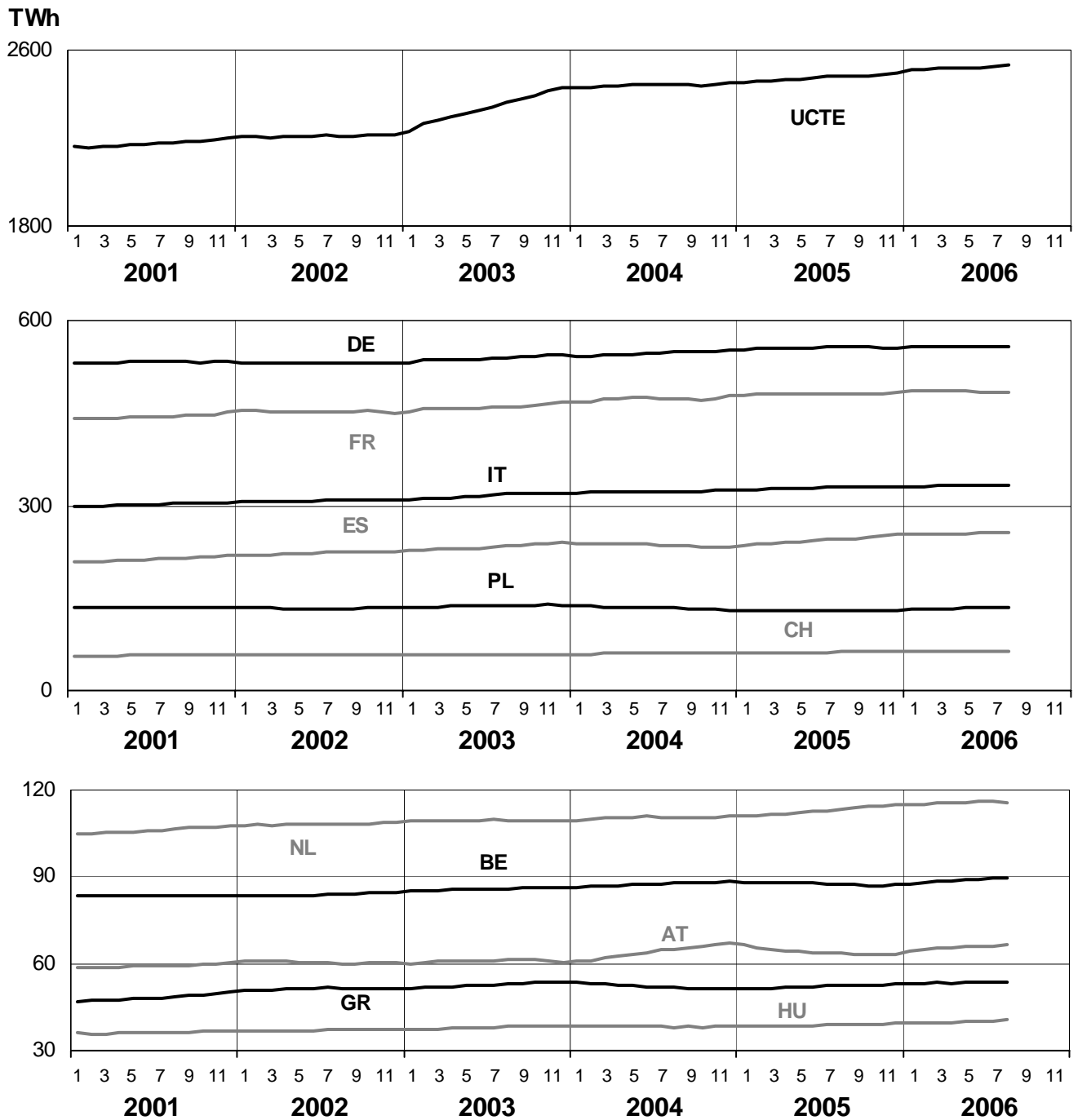
August 2006



5

Consumption of the last 12 months

August 2006

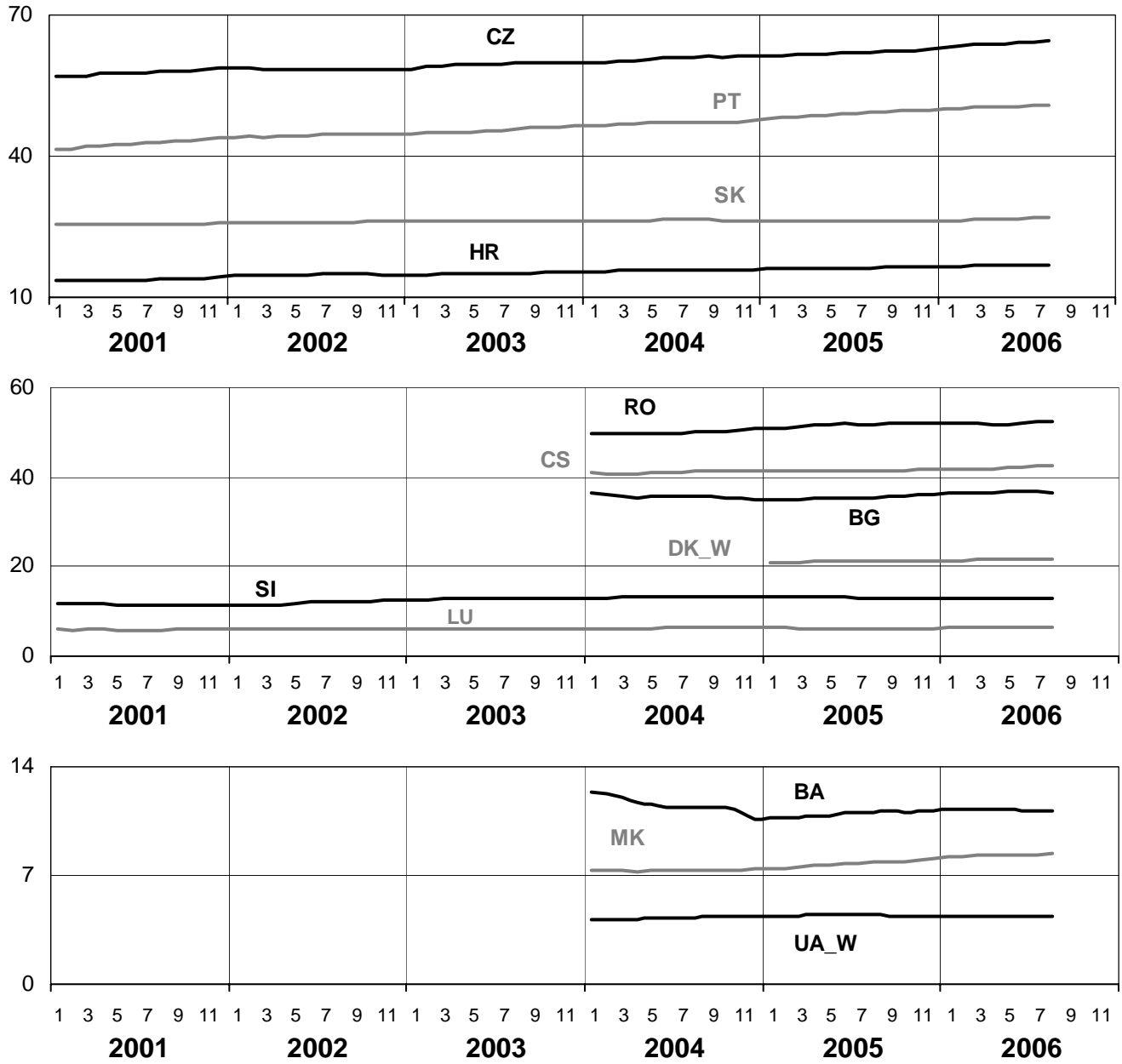


5

Consumption of the last 12 months

August 2006

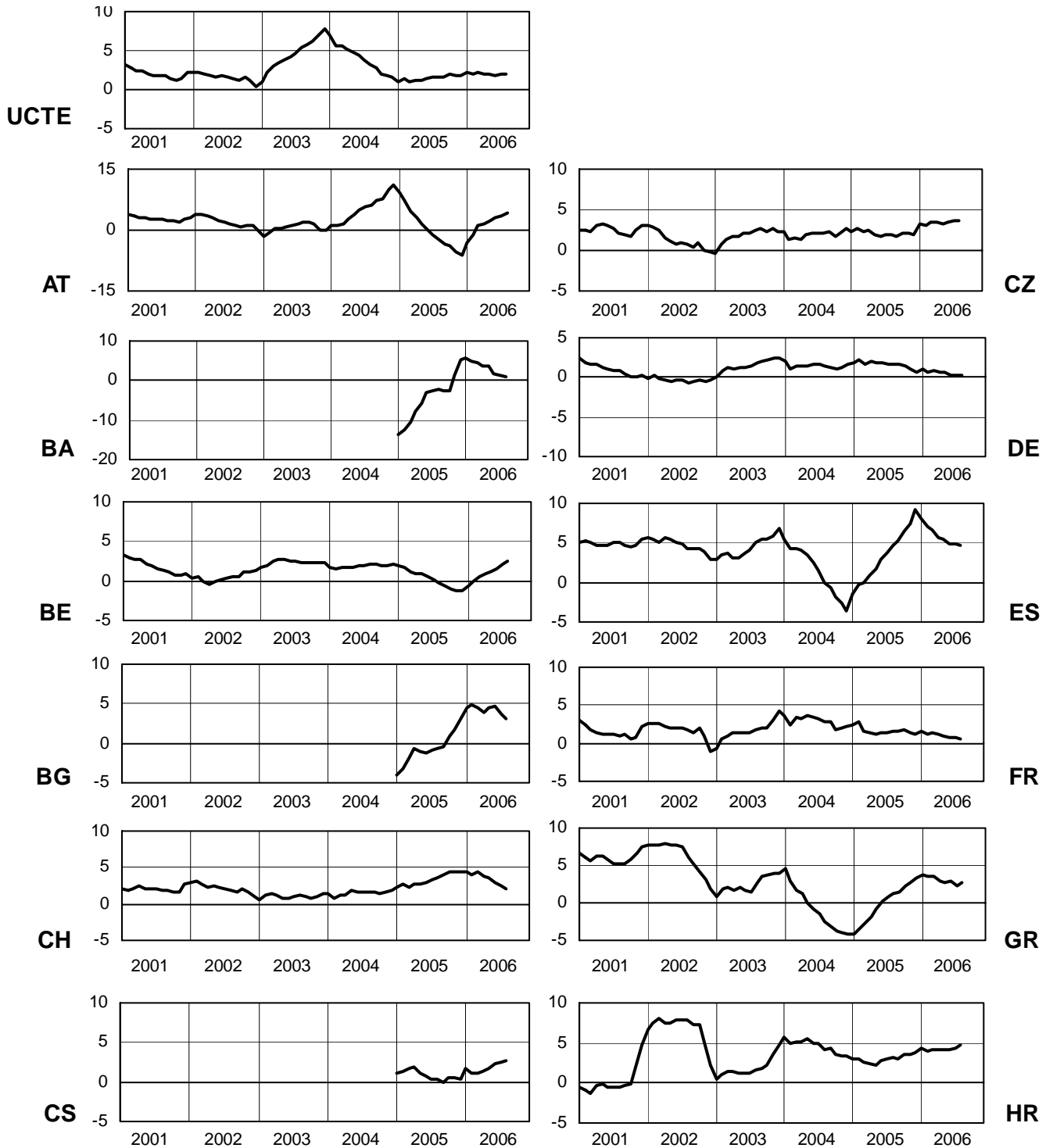
TWh



6

Variation of the last 12 months' consumption in %

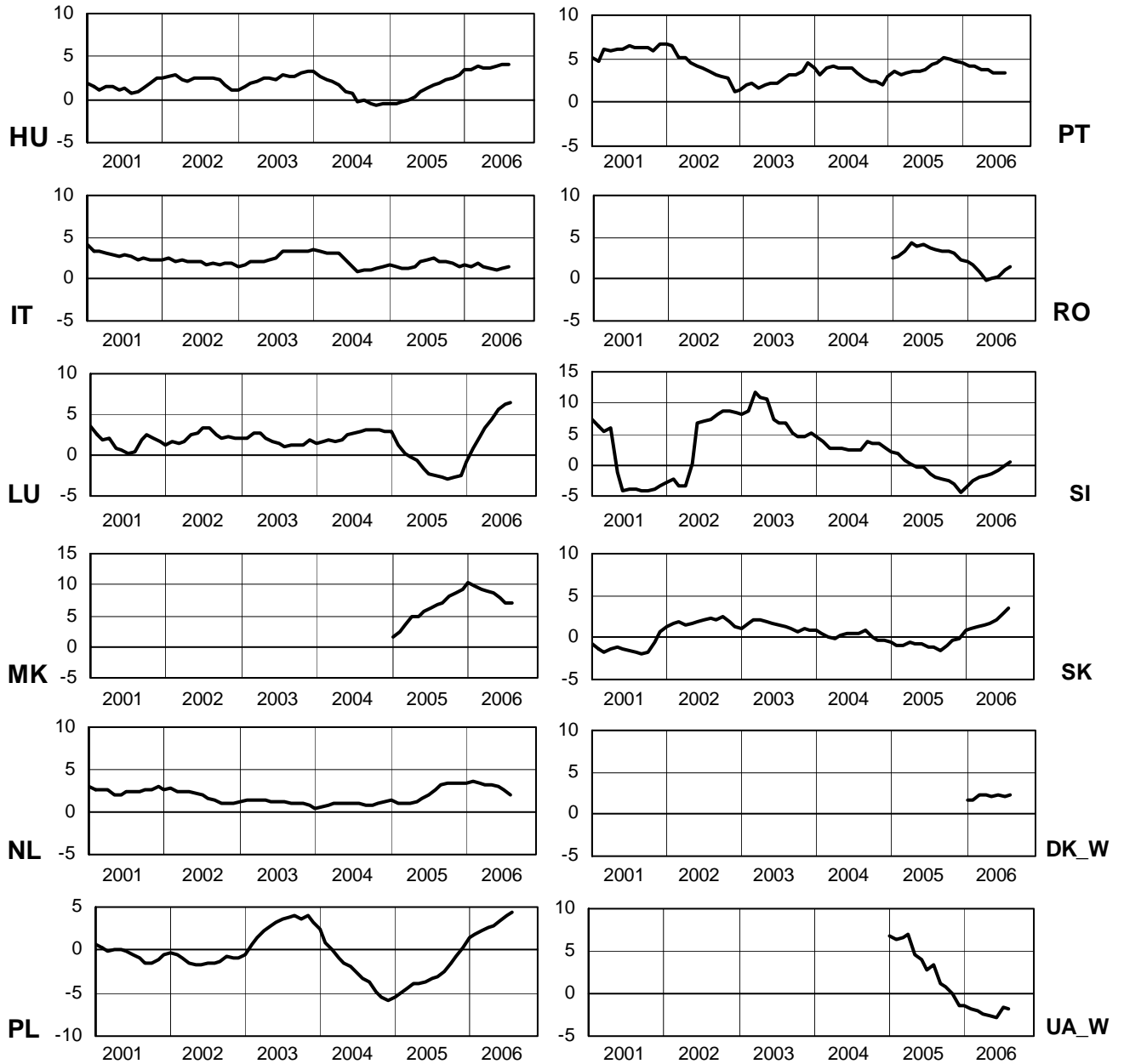
August 2006

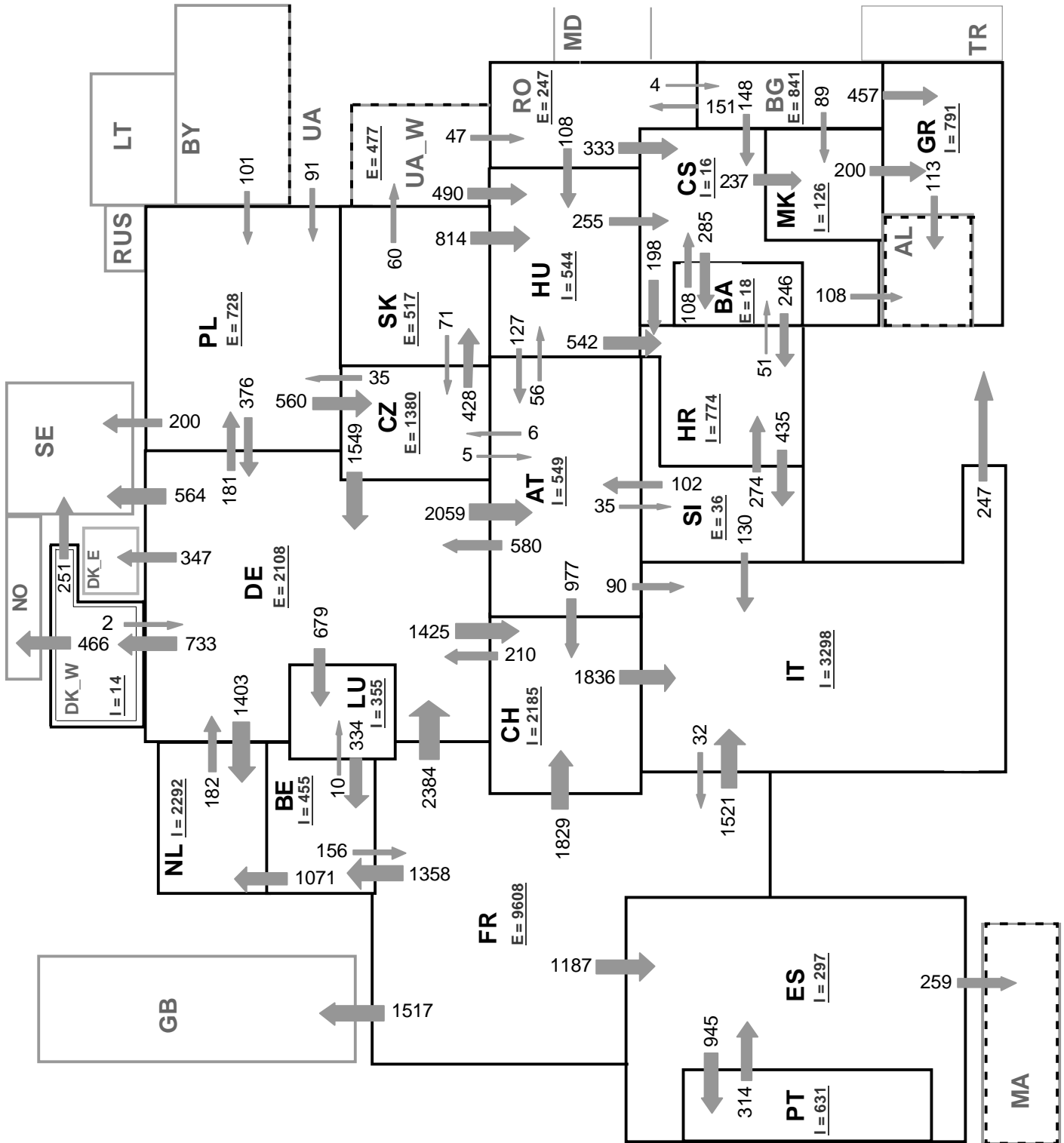


6

Variation of the last 12 months' consumption in %

August 2006





Associate member

Synchronous operation with UCTE region

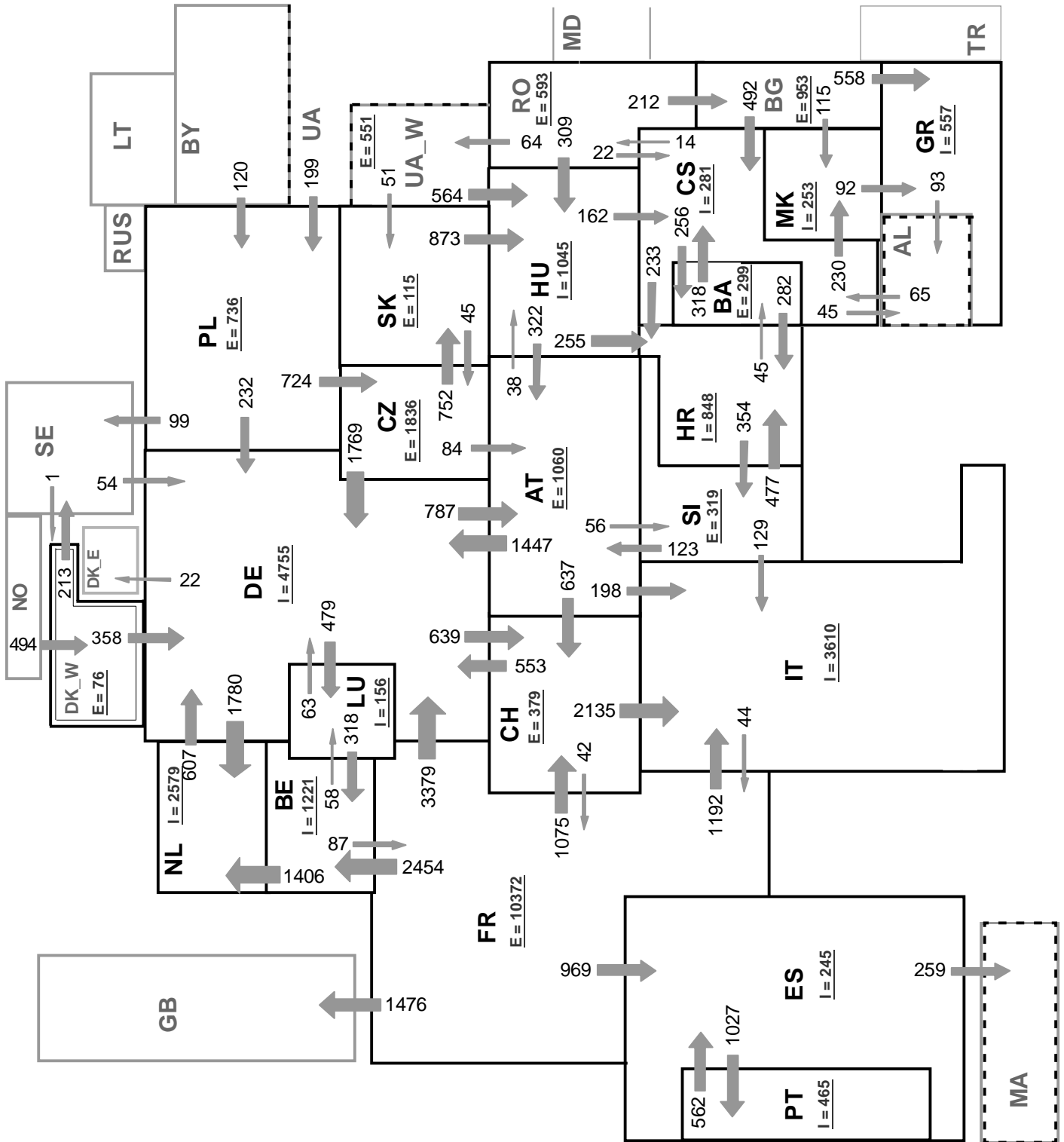
Sum of load flows in MW:

UCTE = 29425 MW

Total = 34774 MW

I = Import balance

E = Export balance



Associate member

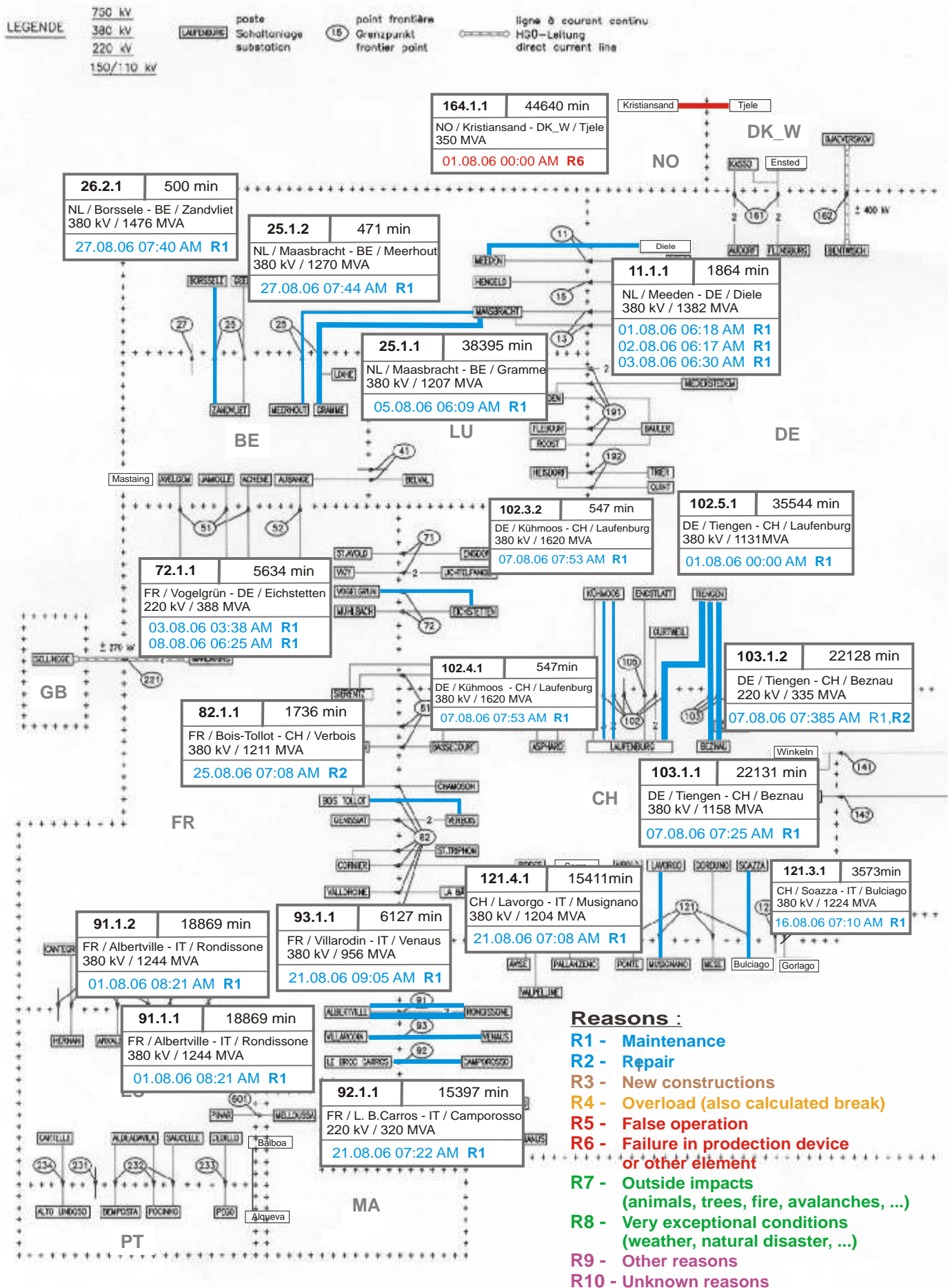
Synchronous operation with UCTE region

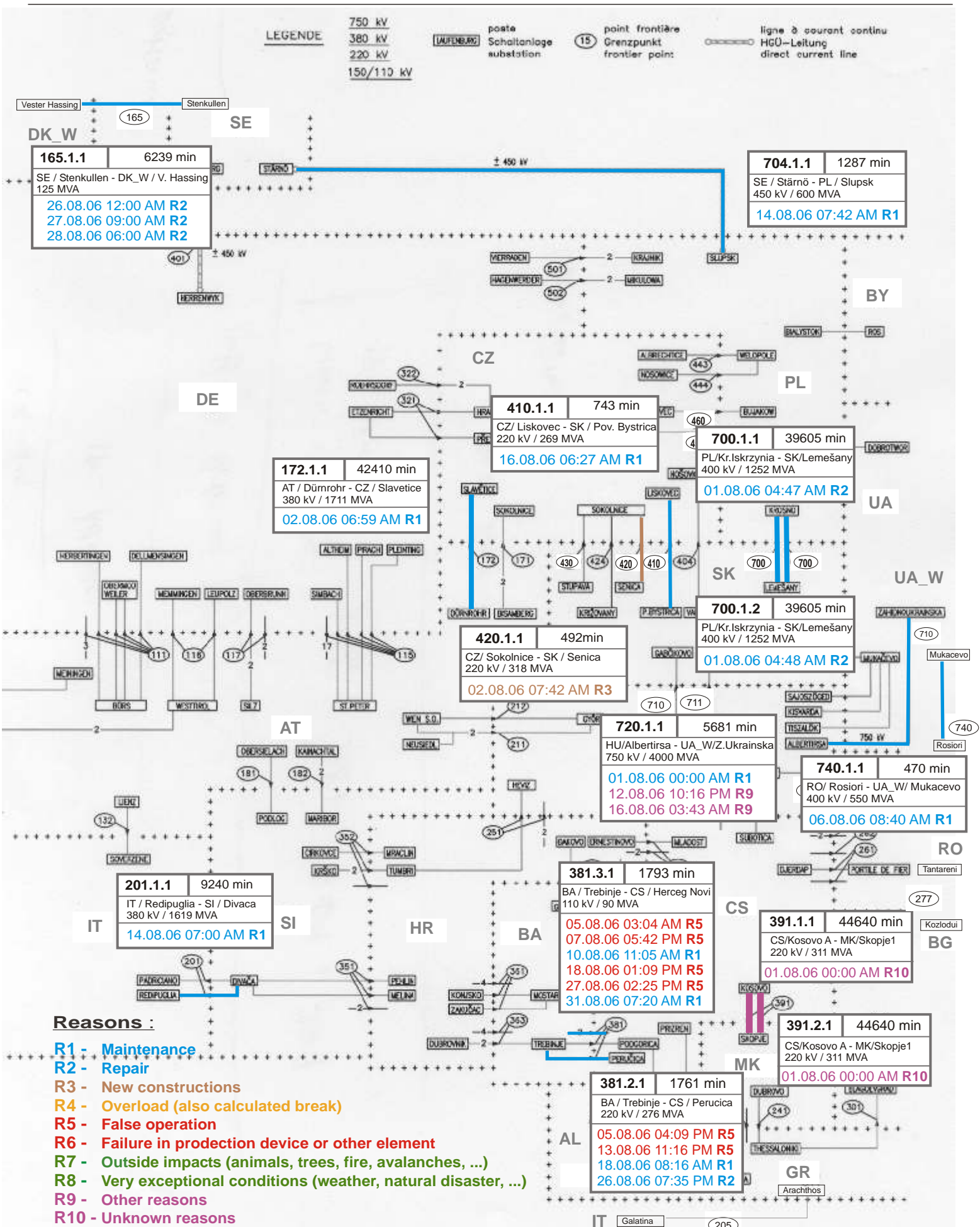
Sum of load flows in MW:

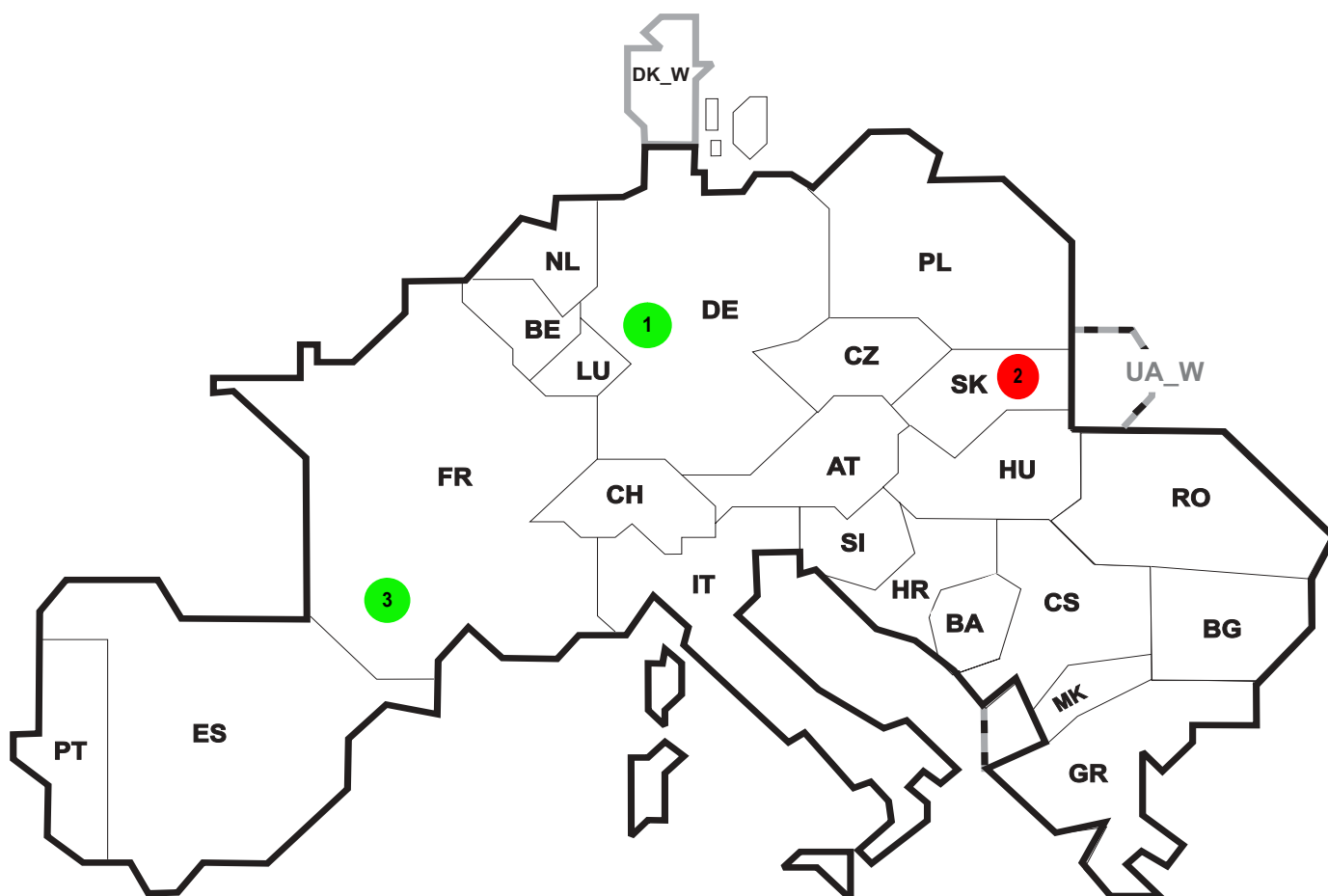
UCTE = 31511 MW

Total = 35688 MW

I = Import balance
E = Export balance







Reasons:

R4 Overload (also calculated break)

R5 False operation

R6 Failure in protection device or other element

R7 Outside impacts (animals, trees, fire, avalanches, ...)
(animals, trees, fire, avalanches, ...)

R8 Very exceptional conditions
(weather, natural disaster, ...)

R9 Other reasons

R10 Unknown reasons

No	Country	Substation	Reason	Energy not supplied [MWh]	Total loss of power [MW]	Restoration time [min]	Equivalent time of interruption ¹
1	DE	Rommerskirchen	R8	665	950	42	0,63
2	SK	Sucany	R6	8	61	487	0,16
3	FR	Hospitalet	R8	0	1	13	0,00

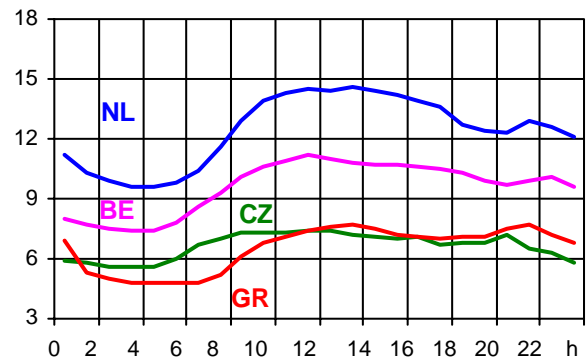
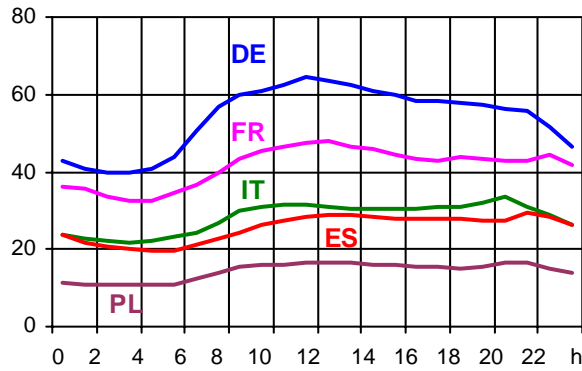
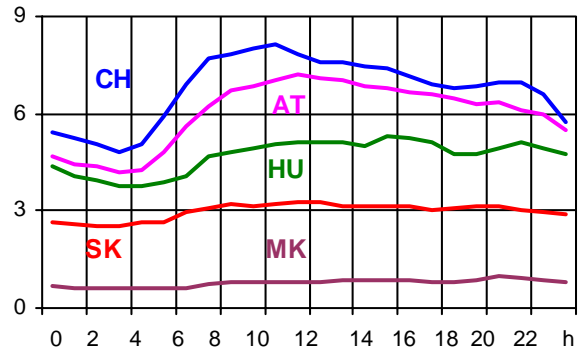
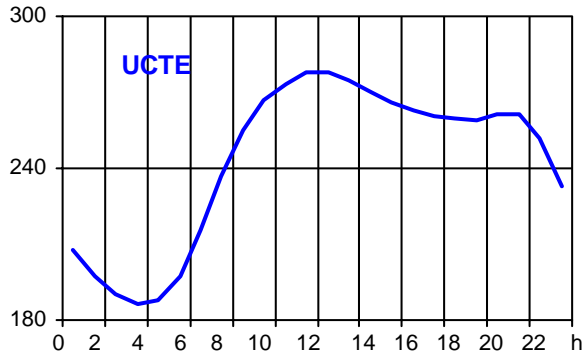
¹ (year [in min] * energy not supply) / consumption last 12 months

Control area	Export Programs	Import Programs	Export Programs at 03:00	Import Programs at 03:00	Export Programs at 11:00	Import Programs at 11:00
AT	480789	151526	119	683	561	573
BA	272055	101384	186	206	360	100
BE	655427	1226972	988	1097	947	1898
BG	n.a.	n.a.	n.a.	n.a.	n.a.	n.a.
CH	2186610	2320467	2013	4244	3763	3417
CS	334219	495197	547	543	402	664
CZ	1583877	351946	1890	403	2368	466
DE	1590203	3409797	2691	3533	1982	6005
ES	717560	770235	941	1200	923	1089
FR	7588400	642834	9956	384	10520	216
GR	5389	516320	0	805	0	555
HR	31448	615778	74	688	3	854
HU	498911	1060878	715	1287	712	1758
IT	110538	3031780	230	3656	47	3652
MK	37800	172400	20	114	20	270
NL	349610	1920664	263	2562	101	2670
PL	583360	88040	820	135	900	206
PT	53749	411816	0	643	0	492
RO	414402	111627	394	138	740	142
SI	546119	454940	541	498	817	451
SK	580342	364485	780	217	886	697
DK_W	599426	466028	970	725	700	500
UA_W	324877	0	475	0	550	0

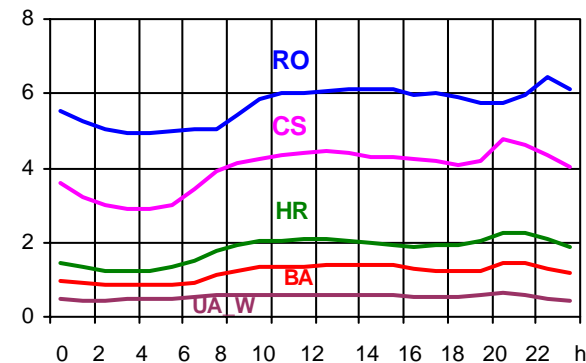
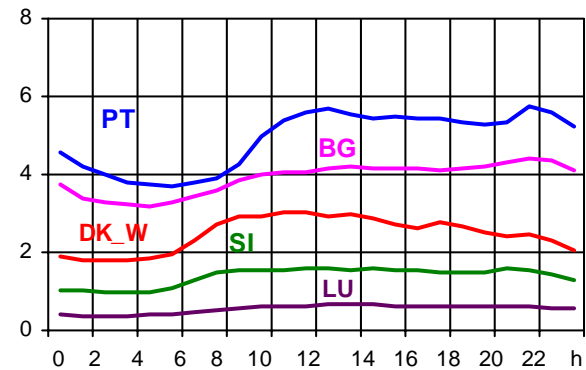
- Control areas can differ from national borders (i.e. German block which includes parts of AT, LU and DK).
- Values are calculated on an hourly base (MWh).
- This values are not the provisional values entered in the VULCANUS system, but the definitive values after an eventual correction during the actual date.
- Export Programs: Sum of all positive values of every hour of every border
- Import Programs: Sum of all negative values of every hour of every border
- Export Programs at 03:00: Sum of all positive values the third Wednesday from 02:00 to 03:00 a.m.
- Import Programs at 03:00: Sum of all negative values the third Wednesday from 02:00 to 03:00 a.m.
- Export Programs at 11:00: Sum of all positive values the third Wednesday from 10:00 to 11:00 a.m.
- Import Programs at 11:00: Sum of all negative values the third Wednesday from 10:00 to 11:00 a.m.

Consumption hourly load curves on 16.08.2006

Values in GW



	Highest load		Load representativity %	Parallel power ² MW
	MW	var.% ¹		
AT	7234	-1,8	100	9045
BA	1428	4,6	100	1632
BE ³	11170	2,6	100	9680
BG	4386	11,1	100	5062
CH	8156	3,3	100	8711
CS	4777	4,4	100	4084
CZ	7412	0,9	100	9523
DE	70660	-3,2	91	68700
ES	29855	-8,4	98	28835
FR	48094	-2,8	100	56919
GR	7733	1,8	100	6873
HR	2273	4,4	100	1422
HU	5299	2,4	100	4077
IT	33411	-1,7	100	28805
LU	664	-6,2	100	627
MK	960	7,6	100	566
NL	14587	3,7	100	11705
PL ⁴	16619	1,1	100	20115
PT	5982	-1,6	96	4932
RO	6432	5,2	100	6600
SI	1671	-2,9	95	1842
SK	3270	2,6	100	3318
UCTE	278155	-1,7		293073
DK_W	3013	-2,6	100	3298
UA_W	667	11,0	100	1121



¹ Variation as compared to corresponding month of the previous year

² Power produced in parallel operation (including autoproduction)

³ The reported figures are best estimates based on actual measurements and extrapolations.

⁴ Average value of each hour



Contact

Boulevard Saint-Michel, 15
B-1040 Brussels – Belgium
Tel +32 2 741 69 40 – Fax +32 2 741 69 49

info@ucte.org
www.ucte.org