

UCTE



July 2003

Monthly provisional values
union for the co-ordination of transmission of electricity

Table of contents ¹		Page
1	Electricity supply situation of the countries	2
2	Physical energy flows	3
3	Monthly consumption	4
4	Monthly consumption variation	5
5	Consumption of last 12 months	6
6	Variation of the last 12 months' consumption	7
7	Load flows (night)	8
8	Load flows (day)	9
9	Unavailability of international tie lines (major events)	10
10	Network reliability (major events)	12
11	Scheduled exchanges	13
12	Load on the 3 rd Wednesday	14

¹ Monthly provisional values as of UCTE database from 10 November 2003

Countries	Net production in GWh ¹				Exchange balance in GWh	Pump in GWh	Consumption in GWh ¹			
	Hy	Tn	Tc	Total			monthly	Δ ³ [%]	last 12 months	Δ ³ [%]
B	78	3387	2824	6289 ²	169	94	6364	1,4	84015	1,5
D	1580	11563	26305	39448 ²	1149	783	39814	3,9	505669	1,8
E	2261	5408	12409	20078 ²	237	420	19895	7,8	216567	2,9
F	3779	33172	2948	39899	-5004	554	34341	3,0	442297	1,2
GR	543	0	4156	4699 ²	393	77	5015	1,9	48638	1,4
I	4416	0	22008	26424	4210	835	29799	5,8	316180	2,3
SLO	225	423	346	994	26	0	1020	4,0	12239	6,7
HR	270	0	603	873 ²	377	18	1232	3,6	15058	1,1
BiH	231	0	556	787	52	0	839	n.a.	n.a.	n.a.
FYROM	100	0	313	413 ²	2	0	415	n.a.	n.a.	n.a.
SCG	549	0	1888	2437	190	34	2593	n.a.	n.a.	n.a.
L	83	0	105	188	425	104	509	2,0	41678	-1,7
NL	0	332	7431	7763 ²	1067	0	8830	1,6	6076	3,1
A	2867	0	940	3807	419	283	3943	1,4	109598	1,1
P	621	0	2773	3394 ²	329	65	3658	4,5	51321	2,0
CH	4079	2190	240	6509 ²	-1750	317	4442	2,3	41863	2,3
CZ	106	2493	3273	5872 ²	-1672	29	4171	2,3	58973	3,4
H	12	622	1797	2431 ²	668	0	3099	2,4	59626	1,4
PL ⁵	210	0	11060	11270 ²	-698	179	10393	5,1	37987	0,3
SK	246	1099	592	1937 ²	22	23	1936	-0,5	137737	4,1
UCTE	23323	62420	107092	192835²	-163	3845	188827	4,0	2215570	2,0
RO	853	438	2921	4212 ²	-217	0	3995	n.a.	n.a.	n.a.
BG	214	1293	1604	3111 ²	-557	30	2524	n.a.	n.a.	n.a.
West-UA	6	0	531	537 ²	-266	0	271	n.a.	n.a.	n.a.

¹ Percentage as referred to total values in %

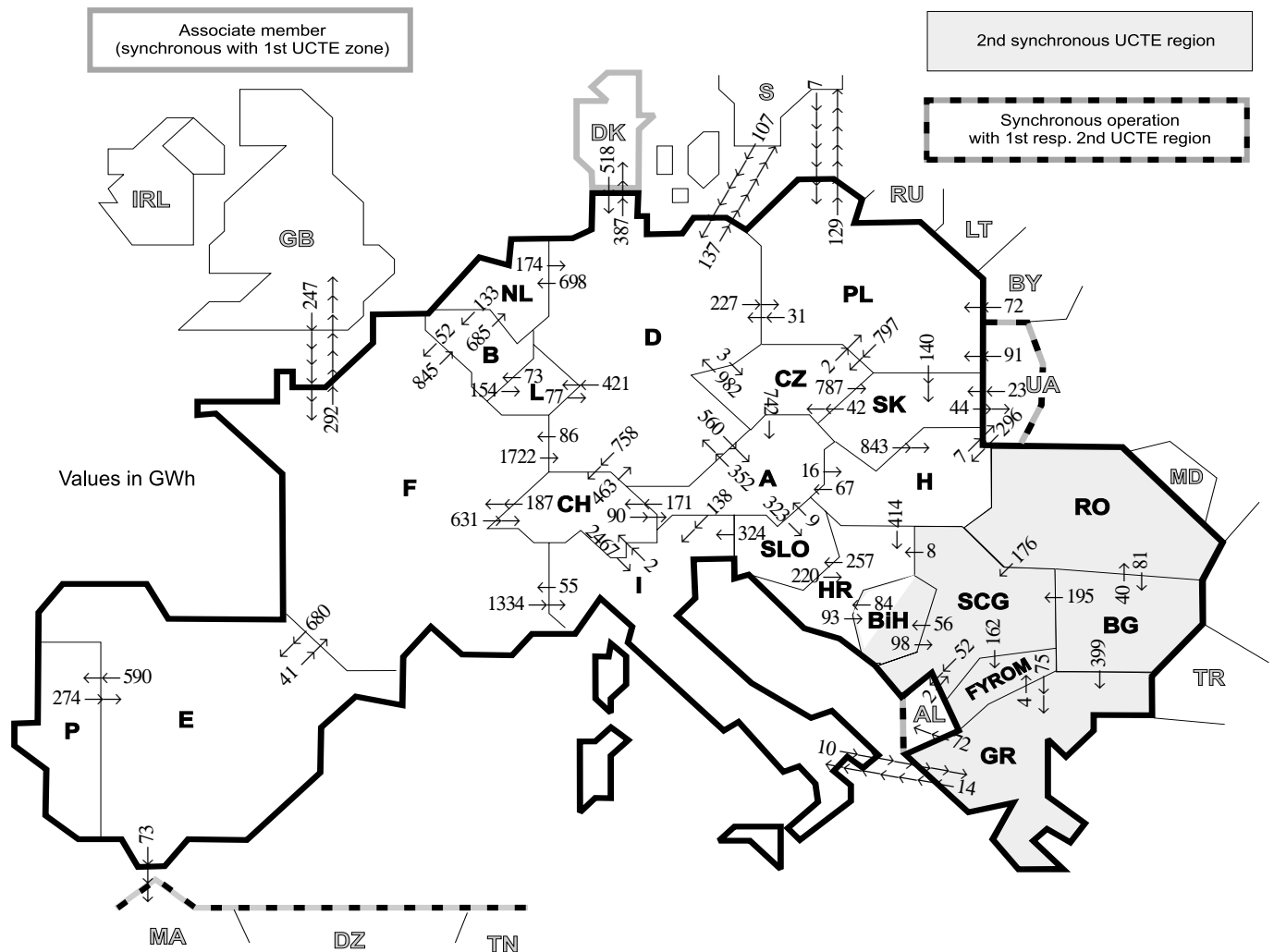
Countries	B	D	E	F	GR ⁴	I	SLO	HR	BiH	FY- ROM	SCG	L	NL	A	P	CH	CZ	H	PL	SK	RO	BG	West- UA
Production	99	94	94	97	93	100	95	100	99	100	96	98	100	84	91	100	100	100	100	100	100	100	100
Consumption	99	94	94	97	93	100	95	100	99	100	96	99	100	90	91	100	100	100	100	100	100	100	100

² Including deliveries from industry

³ Variation as compared to corresponding period of the previous year and representativity 100%

⁴ The representativity of data referring to the whole country including the isolated systems of the Greek island is 93%.
The representativity of data referring interconnected system on the mainland is 99%.

⁵ Production values are gross values.



Exporting countries	Importing countries																	West-UA	DK ²	III ¹	Σ Export							
	B	D	E	F	GR	I	SLO	HR	BIH	FY-ROM	SCG	L	NL	A	P	CH	CZ					H	PL	SK	RO	BG		
B	-	-	-	52	-	-	-	-	-	-	154	685	-	-	-	-	-	-	-	-	-	-	-	-	-	-	-	891
D	-	-	-	86	-	-	-	-	-	-	421	698	560	-	758	3	-	227	-	-	-	-	-	-	387	524	3664	
E	-	-	-	41	-	-	-	-	-	-	-	-	-	590	-	-	-	-	-	-	-	-	-	-	-	73	704	
F	845	1722	680	-	-	1334	-	-	-	-	-	-	-	-	631	-	-	-	-	-	-	-	-	-	-	292	5504	
GR	-	-	-	-	-	14	-	-	-	4	-	-	-	-	-	-	-	-	-	-	-	-	0	-	-	72	90	
I	-	-	-	55	10	-	0	-	-	-	-	-	-	0	-	2	-	-	-	-	-	-	-	-	-	-	67	
SLO	-	-	-	-	-	324	-	220	-	-	-	-	-	9	-	-	-	-	-	-	-	-	-	-	-	-	553	
HR	-	-	-	-	-	-	257	93	-	0	-	-	-	-	-	-	-	0	-	-	-	-	-	-	-	-	350	
BIH	-	-	-	-	-	-	84	-	-	98	-	-	-	-	-	-	-	-	-	-	-	-	-	-	-	-	182	
FYROM	-	-	-	-	75	-	-	-	-	0	-	-	-	-	-	-	-	-	-	-	-	0	-	-	-	-	75	
SCG	-	-	-	-	-	-	-	8	56	162	-	-	-	-	-	-	-	0	-	-	0	2	-	-	-	52	280	
L	73	77	-	-	-	-	-	-	-	-	-	-	-	-	-	-	-	-	-	-	-	-	-	-	-	-	150	
NL	133	174	-	-	-	-	-	-	-	-	-	-	-	-	-	-	-	-	-	-	-	-	-	-	-	-	307	
A	-	352	-	-	-	138	323	-	-	-	-	-	-	-	-	171	0	16	-	-	-	-	-	-	-	-	1000	
P	-	-	274	-	-	-	-	-	-	-	-	-	-	-	-	-	-	-	-	-	-	-	-	-	-	-	274	
CH	-	463	-	187	-	2467	-	-	-	-	-	-	-	90	-	-	-	-	-	-	-	-	-	-	-	-	3207	
CZ	-	982	-	-	-	-	-	-	-	-	-	-	-	742	-	-	-	-	2	787	-	-	-	-	-	-	2513	
H	-	-	-	-	-	-	-	414	-	-	0	-	-	67	-	-	-	-	-	0	0	-	7	-	-	7	495	
PL	-	31	-	-	-	-	-	-	-	-	-	-	-	-	-	-	797	-	-	140	-	-	0	-	129	1097		
SK	-	-	-	-	-	-	-	-	-	-	-	-	-	-	-	-	42	843	0	-	-	-	-	44	44	973		
RO	-	-	-	-	-	-	-	-	-	-	176	-	-	-	-	-	-	0	-	-	-	81	-	-	-	0	257	
BG	-	-	-	-	399	-	-	-	-	0	195	-	-	-	-	-	-	-	-	-	40	-	-	-	-	0	634	
West-UA	-	-	-	-	-	-	-	-	-	-	-	-	-	-	-	-	-	296	91	23	0	-	-	-	-	410		
DK ²	-	518	-	-	-	-	-	-	-	-	-	-	-	-	-	-	-	-	-	-	-	-	-	-	-	-	518	
III ¹	-	-	107	0	247	0	-	-	-	-	-	-	-	-	-	-	-	296	170	23	0	0	-	-	-	-	845	
Σ Import	1051	4426	954	668	484	4277	580	726	149	166	471	575	1383	1468	590	1562	842	1155	399	950	40	83	51	387	1193	25040		

Sum of physical energy flows between UCTE countries = 21687 GWh

Total physical energy flows = 24192 GWh

¹ III = Third countries: Albania, Belarus, Denmark, Great Britain, Morocco, Republic of Moldova, Sweden, Republic of Turkey and West-Ukraine

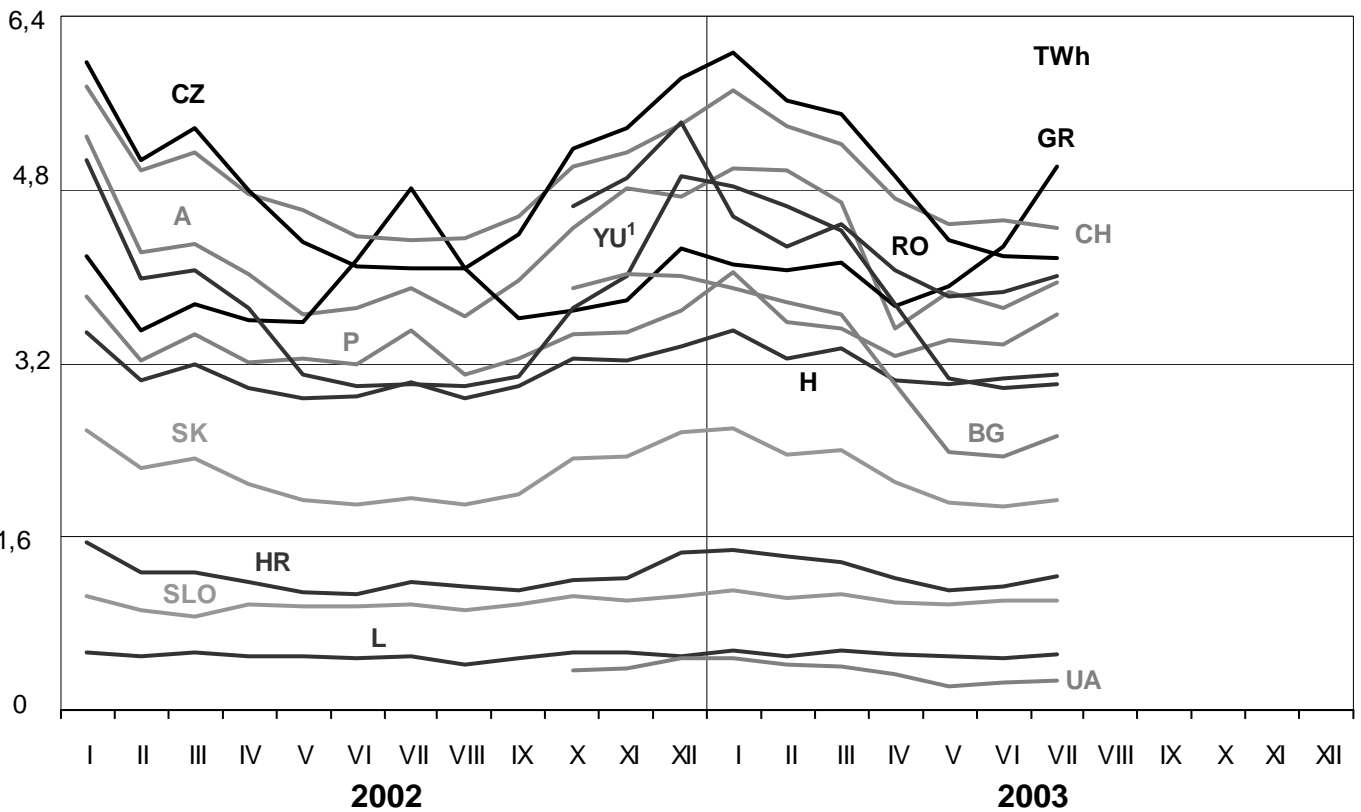
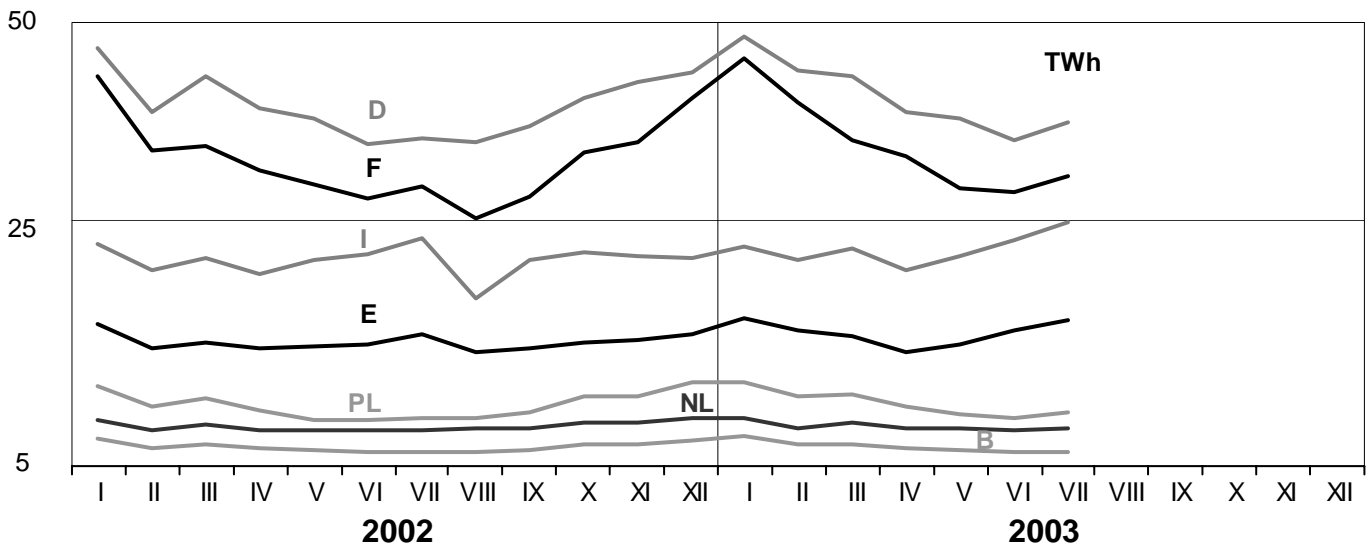
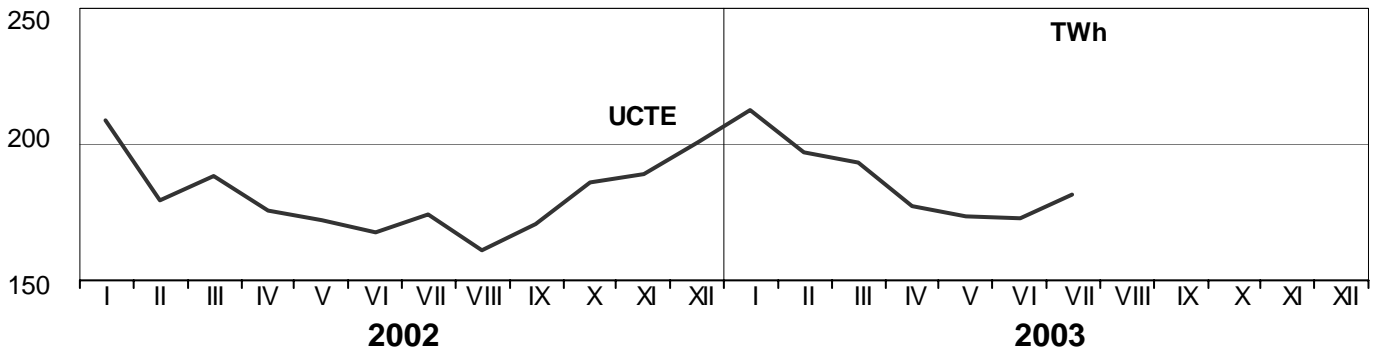
² Denmark (Jutland)

These physical energy flows were measured on the cross-frontier transmission lines (≥ 110 kV) listed in table 9 of the Statistical Yearbook. These values may differ from the official statistics and the exchange balances in chapter 1.

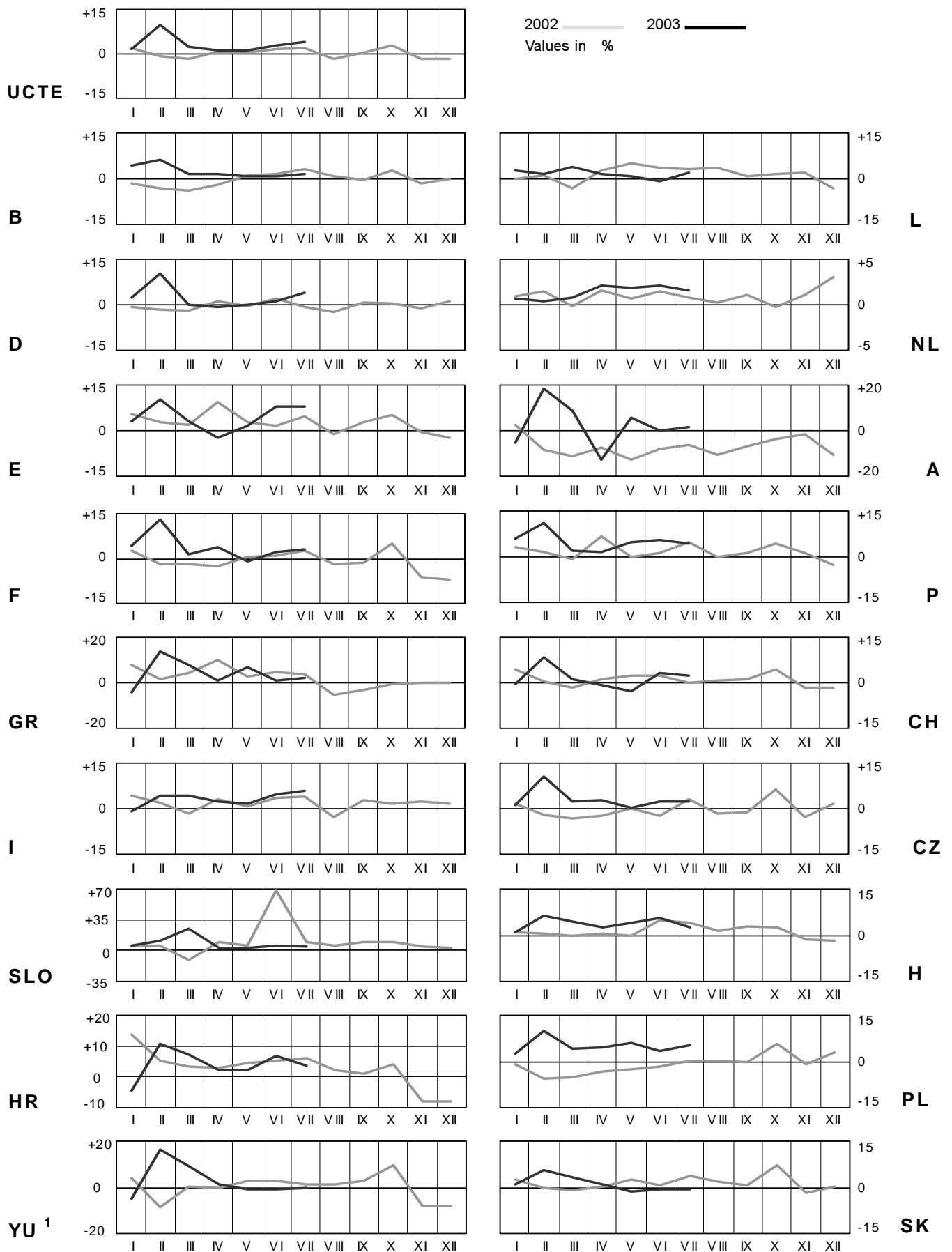
3

Monthly consumption

July 2003



¹ YU = FRY + FYROM (Federal Republic of Yugoslavia and former Yugoslav Republic of Macedonia)

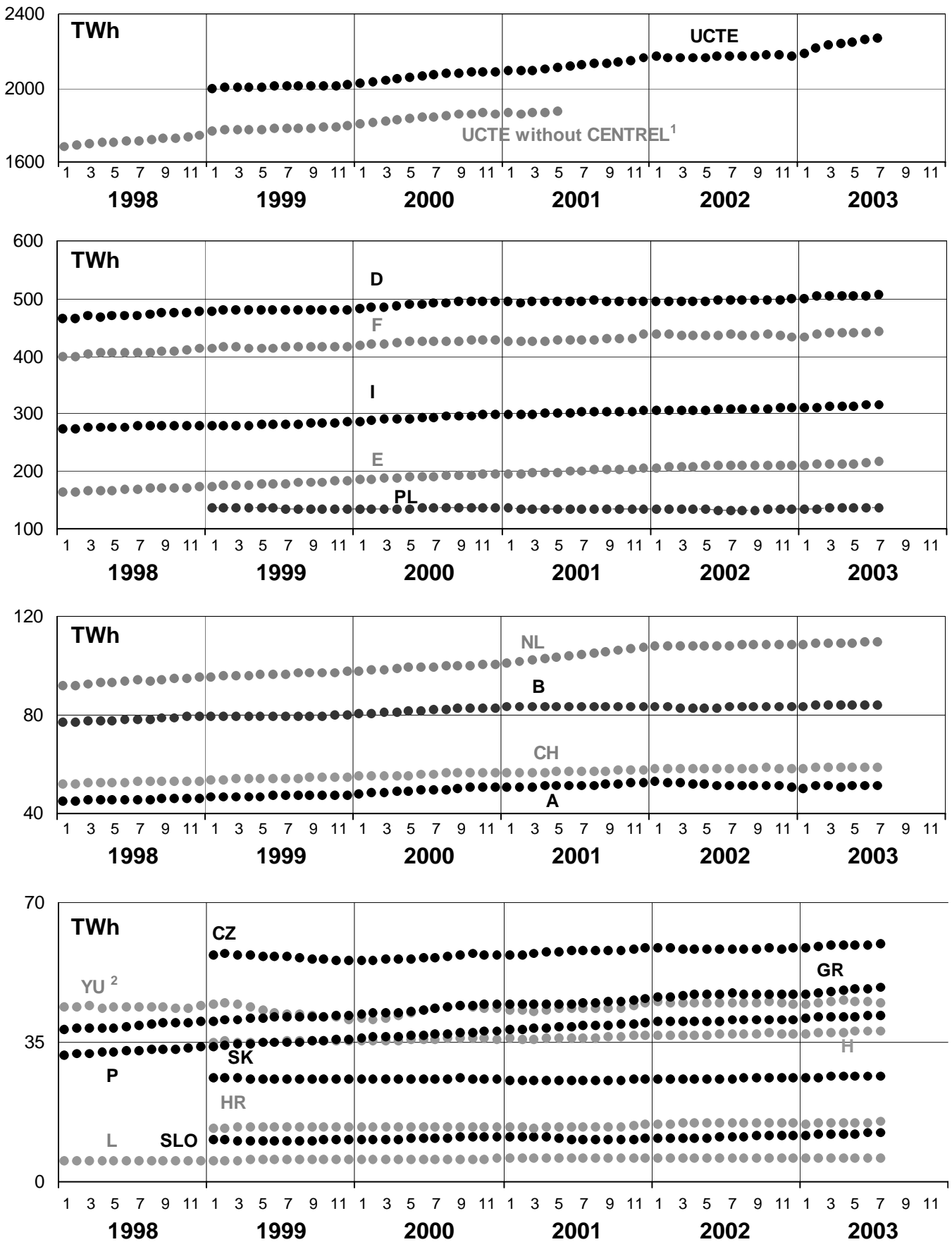


¹YU = FRY + FYROM (Federal Republic of Yugoslavia and former Yugoslav Republic of Macedonia)

5

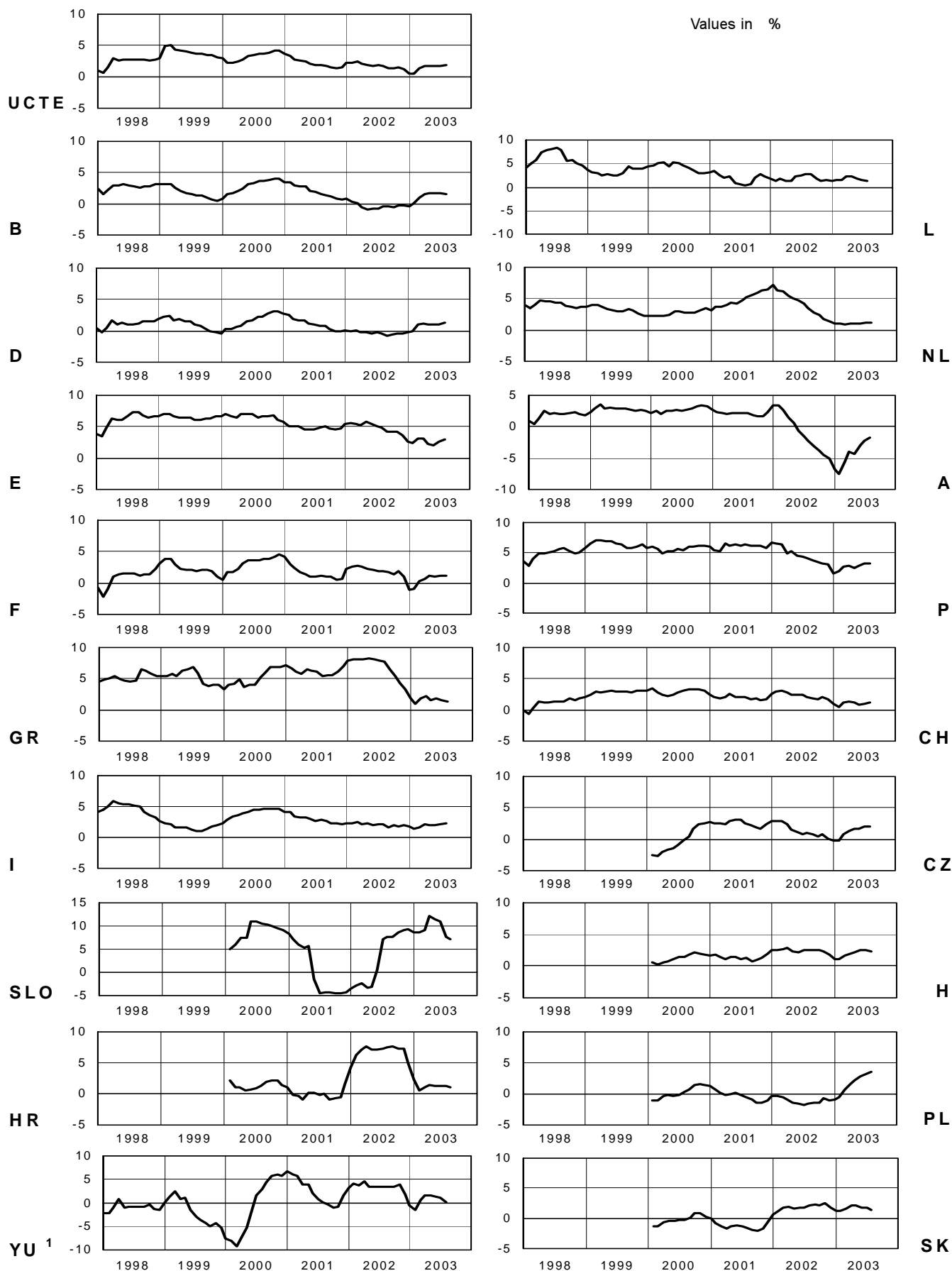
Consumption of last 12 months

July 2003

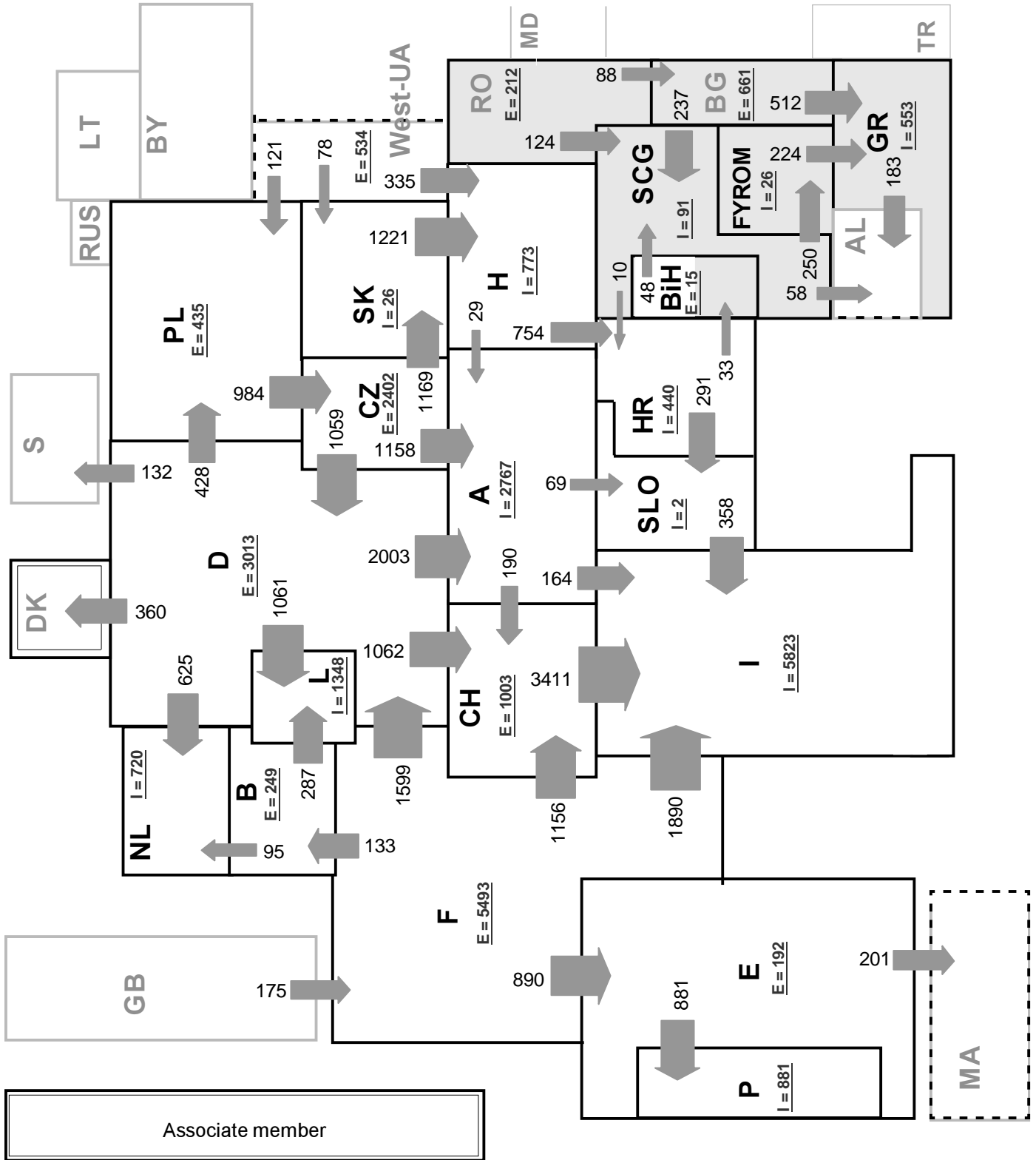


¹ CENTREL countries CZ, H, PL and SK member of UCTE from May 2001

² YU = FRY + FYROM (Federal Republic of Yugoslavia and former Yugoslav Republic of Macedonia)



¹ YU = FRY + FYROM (Federal Republic of Yugoslavia and former Yugoslav Republic of Macedonia)



Associate member

Synchronous operation with 1st resp. 2nd UCTE region

2nd synchronous UCTE region

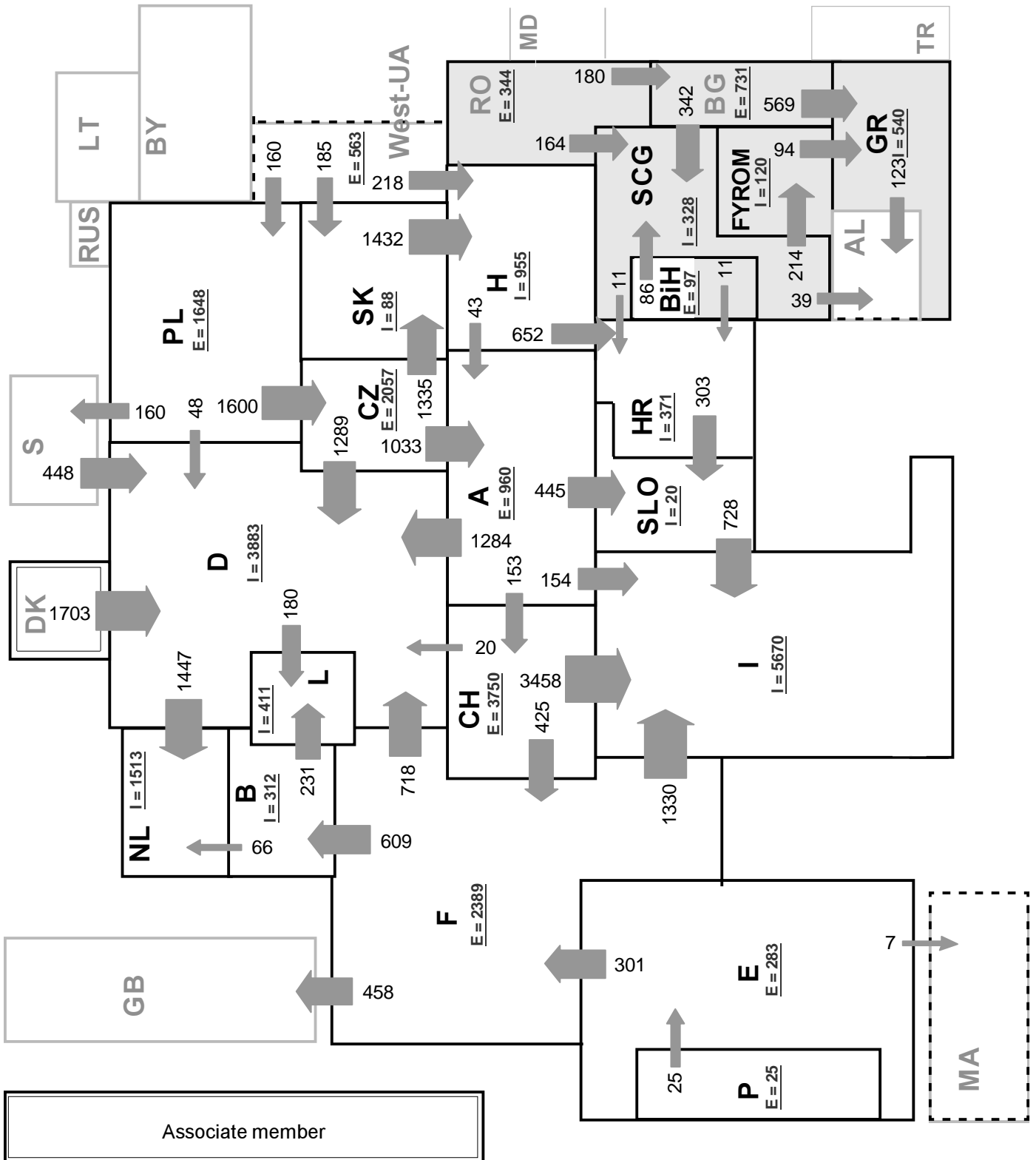
Sum of load flows in MW:

UCTE = 24493 Total = 26136

* Central European Time (CET)

I = Import balance

E = Export balance



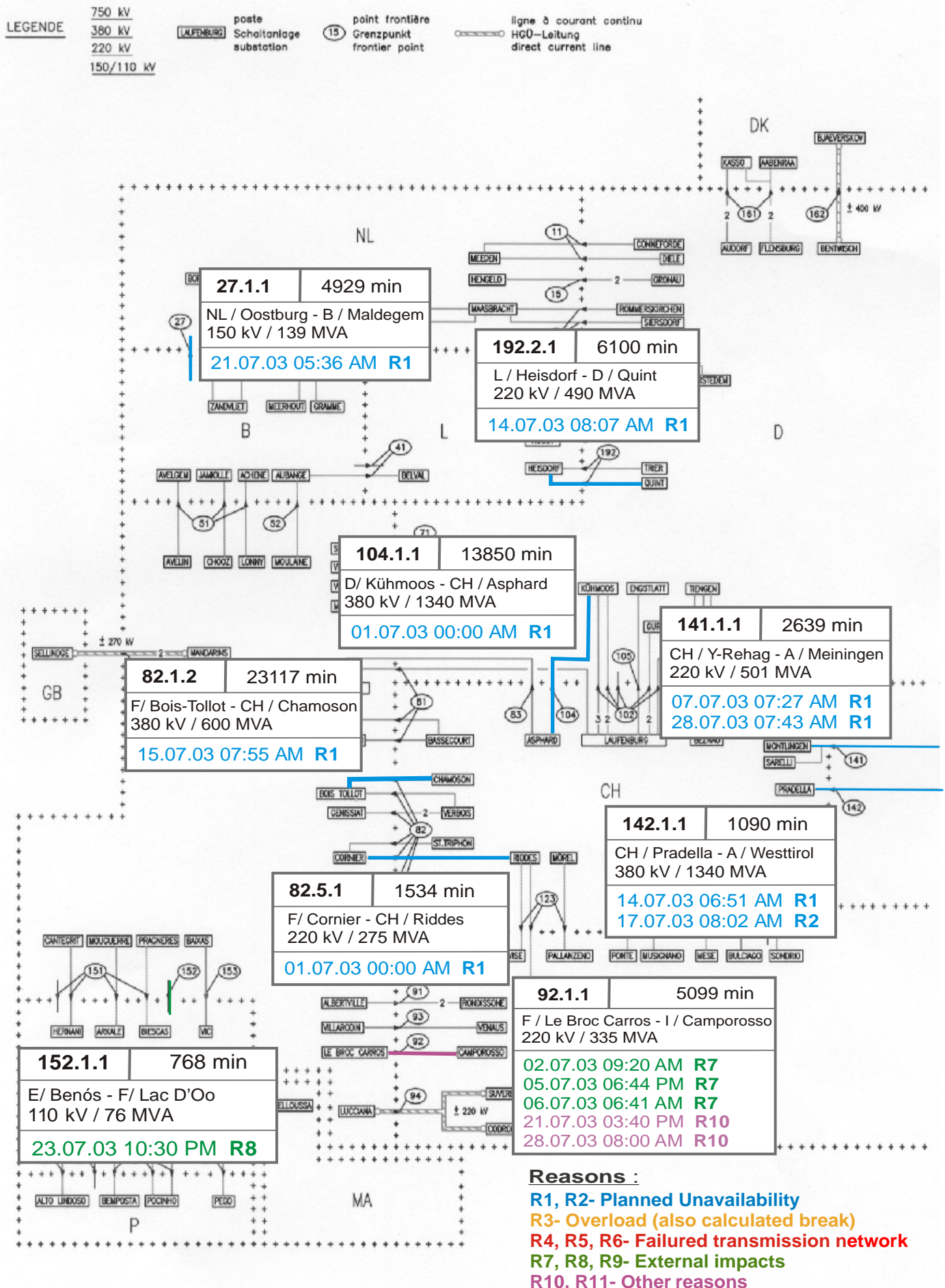
Sum of load flows in MW:

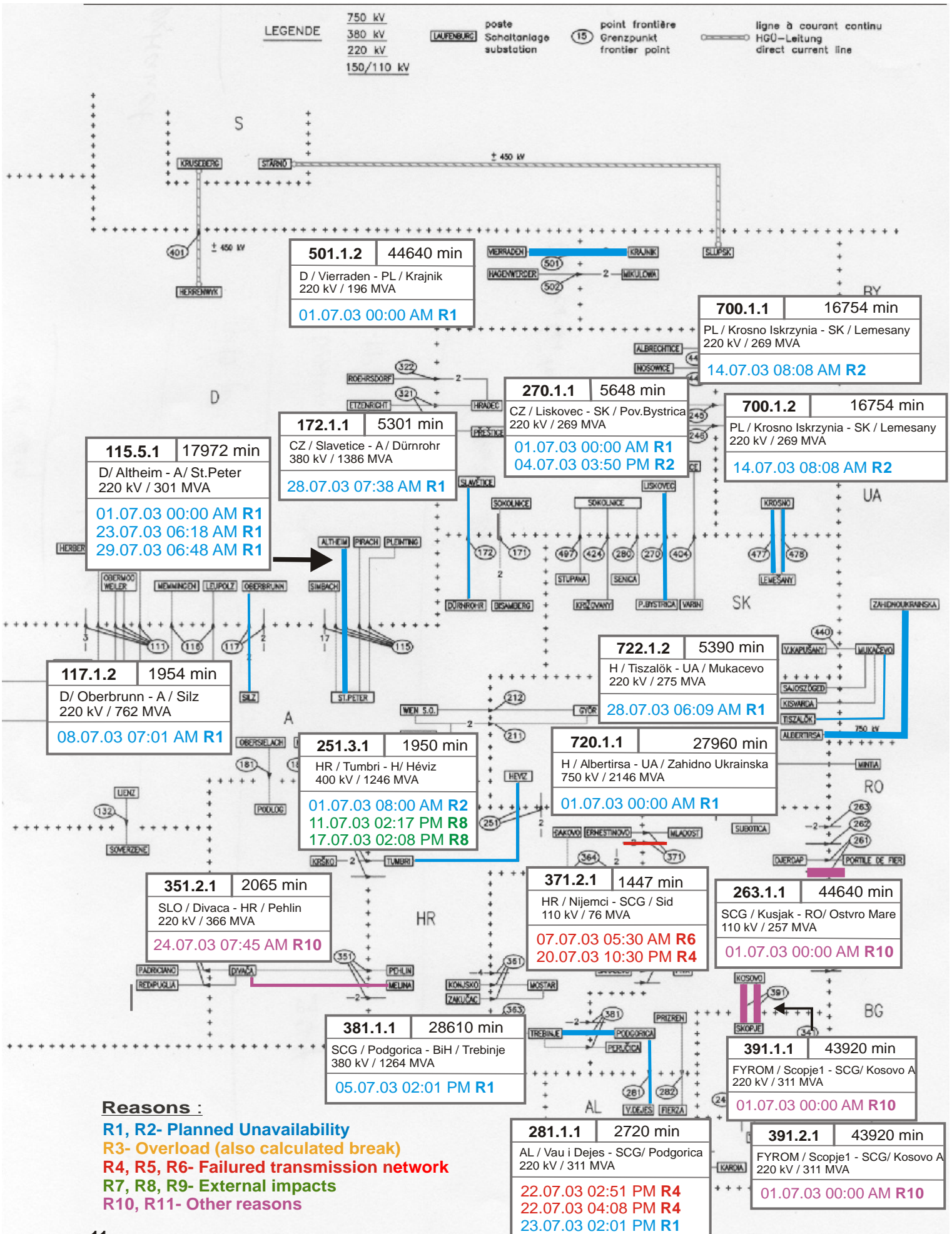
UCTE = 20980 Total = 24481

* Central European Time (CET)

I = Import balance

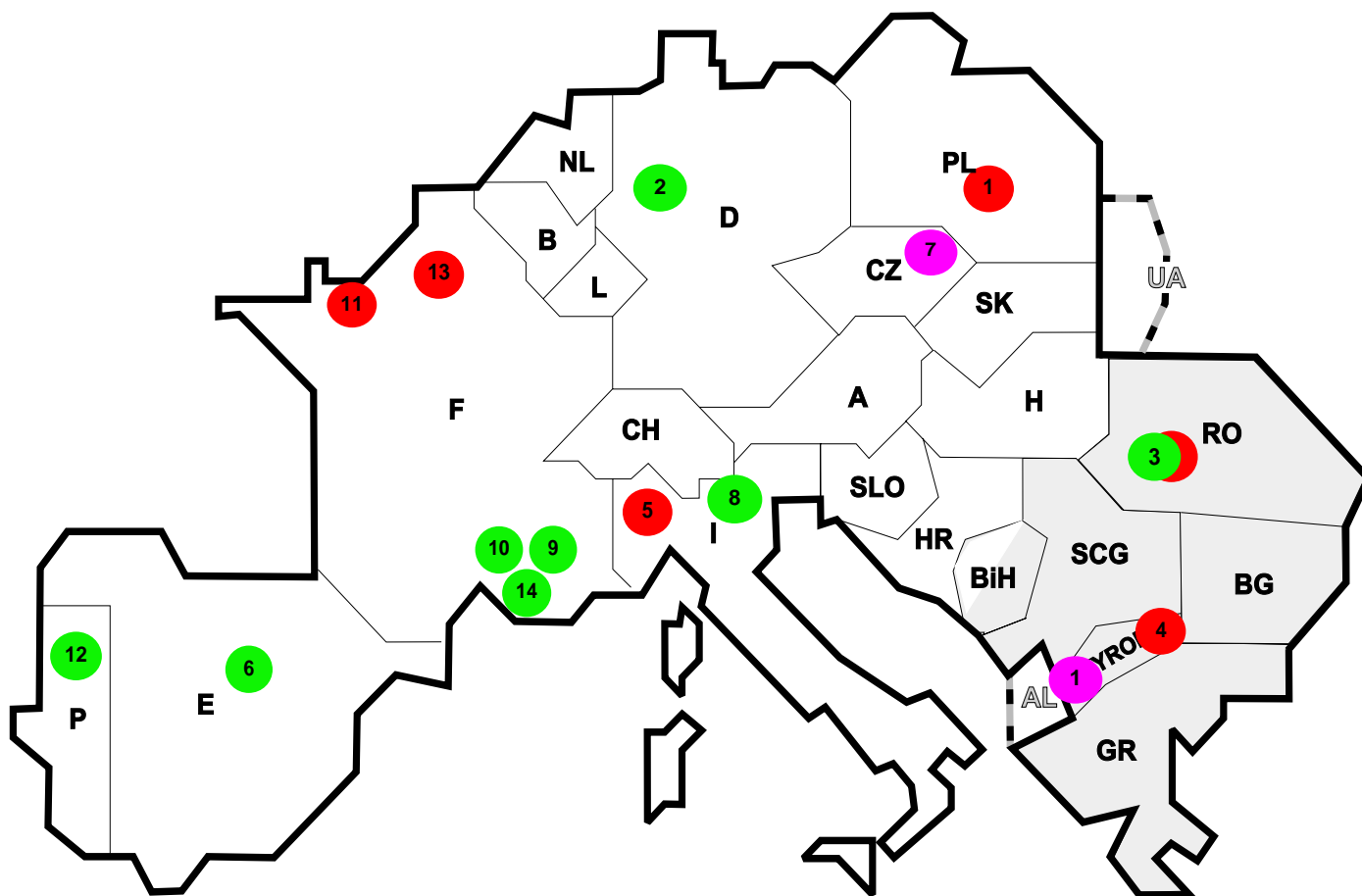
E = Export balance





Reasons :

- R1, R2- Planned Unavailability
- R3- Overload (also calculated break)
- R4, R5, R6- Failed transmission network
- R7, R8, R9- External impacts
- R10, R11- Other reasons



Reasons:

R3 Overload

R7, R8, R9 External impacts (animals...)

R4, R5, R6 Failure in the transmission network

R10, R11 Other reasons

Nbr	Country	Substation	Reason	Energie not supplied [MWh]	Total loss of power [MW]	Restoration time [min]	Equivalent time of interruption ¹
1	FYROM	Skopje4	R10	570	280	260	39,71
2	D	Gersteinwerk	R8	376	610	37	0,63
3	RO	Urechesi	R4, R8	135	540	15	10,69
4	FYROM	Dubrovo	R5	41	41	26	5,81
5	I	Buia	R4	29	35	1	0,06
6	E	Constanti	R7	29	0	7	0,00
7	CZ	Slavetice	R10	24	0	13	0,00
8	I	Pallanzeno	R8	14	32	0	0,05
9	F	Lingostiere	R8	12	3	236	0,00
10	F	Boutre	R7	7	1	435	0,00
11	F	Ranville	R5	6	42	9	0,05
12	P	Mogadouro	R7	4	0	32	0,00
13	F	Halles	R6	3	41	7	0,05
14	F	Fréjus	R7	2	1	150	0,00

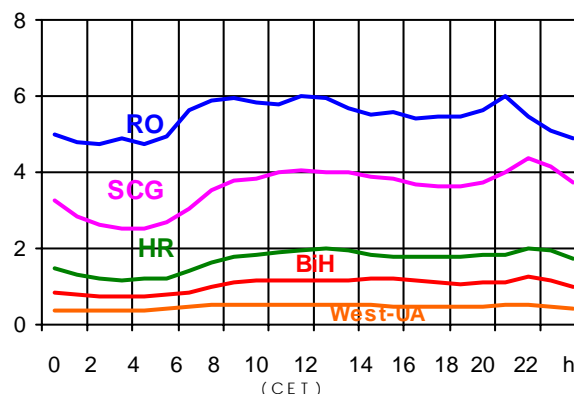
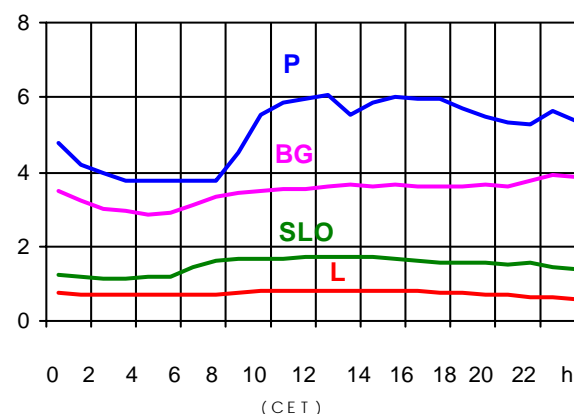
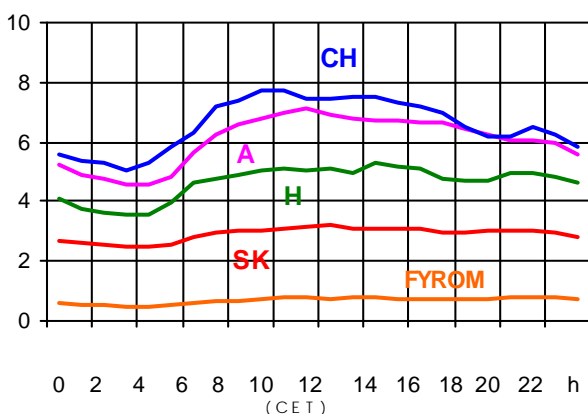
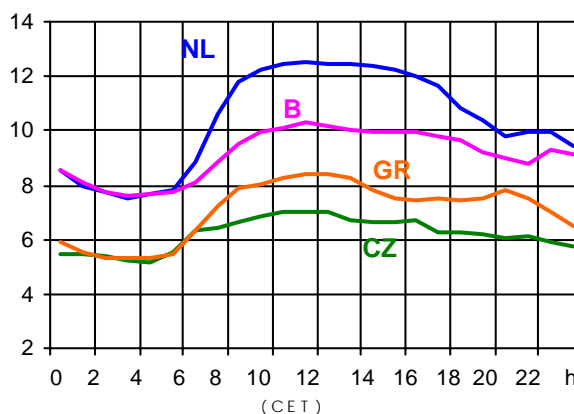
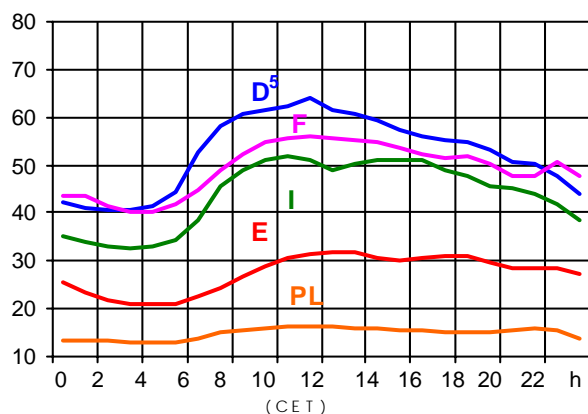
¹ (year [in min] * power loss) / consumption last 12 months

Control area	Prog_exp	Prog_imp	Prog_exp3	Prog_imp3	Prog_exp11	Prog_imp11
B	377336	767295	437	708	0	928
D	2136493	3410576	3637	2680	4930	5275
E	577024	760566	1095	895	1797	1477
F	6964106	2115446	8157	2678	8711	6531
GR	16046	399878	0	498	0	538
I	66669	4277409	0	5823	29	5699
SLO	526176	555453	713	715	834	848
HR	195243	576026	359	515	430	508
BiH	82	149	214	197	253	155
FYROM	n.a.	n.a.	n.a.	n.a.	n.a.	n.a.
SCG	443965	647437	492	611	556	791
NL	422325	1075983	591	1334	747	2266
A	1039700	497166	1597	553	1231	699
P	145573	474283	0	900	927	918
CH	3179199	1538634	3158	1543	4775	1819
CZ	2136204	459733	2854	462	3033	988
H	274258	942323	419	1196	373	1338
PL	874942	145795	601	220	1829	165
SK	569520	541785	665	639	795	789
RO	210818	25632	209	25	360	43
BG	n.a.	n.a.	n.a.	n.a.	n.a.	n.a.
West-UA	265803	0	400	0	400	0

- Control areas can differ from national borders (i.e. German block which includes parts of A, L and DK).
- Values are calculated on an hourly base (MWh).
- This values are not the provisional values entered in the VULCANUS system, but the definitive values after an eventual correction during the actual date.
- Prog_exp: Sum of all positive values of every hour of every border
- Prog_imp: Sum of all negative values of every hour of every border
- Prog_exp3: Sum of all positive values the third Wednesday from 02:00 to 03:00 a.m.
- Prog_imp3: Sum of all negative values the third Wednesday from 02:00 to 03:00 a.m.
- Prog_exp11: Sum of all positive values the third Wednesday from 10:00 to 11:00 a.m.
- Prog_imp11: Sum of all negative values the third Wednesday from 10:00 to 11:00 a.m.

Consumption hourly load curves¹ on 16.07.03

Values in GW



	Peak load MW	Δ % ²	Cons_load_repr ¹ %	Parallel load ³ MW
B	10294	-0,3	100	9915
D	63900	0,9	91	68800
E	31918	6,9	94	30857
F ⁴	56269	3,3	97	60038
GR ⁴	8414	-4,2	93	7718
I	51820	8,4	100	45148
SLO	1725	7,9	95	1643
HR	1989	2,4	100	880
BIH	1252	n.a.	100	1252
FYROM	809	n.a.	100	655
SCG	4363	n.a.	96	3657
L	826	8,5	99	823
NL	12541	2,1	90	10906
A	7133	0,1	82	7923
P	6052	-1,3	91	5567
CH	7740	-3,9	100	11453
CZ	8687	27,1	100	9318
H	5296	3,6	100	4145
PL	16435	3,4	100	17844
SK	3191	1,0	100	3039
UCTE	306005	3,9		311658
DK ⁶				2440
RO	6010	n.a.	100	5802
BG	3927	n.a.	100	4275
West-UA	546	n.a.	100	912

¹ Percentage as referred to total values in %

² Variation as compared to corresponding month of the previous year

³ Including autoproduction

⁴ The representativity of data referring to the whole country, including the systems of the Greek islands, is 93%. The representativity of data to the interconnected system is 99%.

⁵ Values estimated on the basis of former data from the German Federal Office for Statistics

⁶ Denmark (Jutland)



Contact

Boulevard Saint-Michel, 15
B-1040 Brussels - Belgium
Tel +3227416940 - Fax +3227416949

info@ucte.org
www.ucte.org