



June 2008

Monthly provisional values

union for the co-ordination of transmission of electricity



Table of contents		Page
1	Electricity supply situation of the countries	2
2	Physical energy flows	3
3	Monthly consumption	4
4	Monthly consumption variation	6
5	Consumption of the last 12 months	8
6	Variation of the last 12 months' consumption	10
7	Load flows (night)	12
8	Load flows (day)	13
9	Unavailability of international tie lines (major events)	14
10	Network reliability (major events)	16
11	Scheduled exchanges	17
12	Load on the 3 rd Wednesday	18

General remarks and abbreviations used in the tables

- All values of production and consumption in chapter 1, 3&4, 5&6 and 12 are calculated to represent 100% of the national values.
- DK_W Denmark West represents the Western part of Denmark synchronously interconnected with UCTE (Jutland and Funen).
- UA_W Ukraine West represents the so-called Burshtyn Island synchronously interconnected with UCTE.
- CET Central European Time
- The Bulgarian load values on the 3rd Wednesday are gross values

Countries	Net production in GWh							Exchange balance in GWh	Pump in GWh	Consumption in GWh			
	Therm. nuclear	Fossil fuels	Hydro prod	Other renew.	Of which wind	Not identify	Total			monthly	var. [%]	last 12 months	var. [%]
AT	0	991	4149	0	0	689	5829	-238	246	5345	2,8	68676	3,5
BA	0	751	313	0	0	0	1064	-176	0	888	5,5	11553	5,8
BE ²	3551	2517	142	271	0	168	6649 ¹	739	148	7240	3,2	91327	2,3
BG	814	1808	385	0	0	0	3007	-520	28	2459	0,9	34219	2,6
CH	1460	174	4500	95	2	0	6229 ¹	-1015	307	4907	1,7	64317	3,5
CZ	1942	3532	162	27	11	0	5663 ¹	-851	27	4785	0,2	65960	4,4
DE	10172	27021	2217	4323	2032	0	43733 ¹	1020	622	44131	0,3	558522	0,4
DK_W	0	1088	1	535	0	0	1624 ¹	67	0	1691	1,4	21896	1,2
ES	4566	12558	3367	2356	2028	0	22847	-1052	275	21520	0,1	271423	3,1
FR	28516	2887	8353	570	273	0	40326 ¹	-5165	289	34872	2,9	494172	6,1
GR	0	4049	379	131	115	0	4559 ¹	547	91	5015	2,5	56380	3,7
HR	0	493	468	2	0	0	963 ¹	436	17	1382	4,5	17939	8,1
HU	1018	1880	0	0	0	0	2898 ¹	456	0	3354	-0,3	41784	2,8
IT	0	19593	5473	834	0	0	25900	2776	696	27980	-3,3	339394	0,2
LU	0	23	76	11	3	0	110	541	96	555	0,4	6896	2,6
ME	0	130	64	0	0	0	194	137	0	331	n.a.	4668	n.a.
MK	0	298	41	0	0	0	339	282	0	621	5,3	8822	7,6
NL	345	6531	0	489	220	0	7365 ¹	1916	0	9281	0,7	117223	0,9
PL ³	0	10927	166	55	43	0	11148 ¹	-121	74	10953	1,6	144083	4,3
PT	0	1990	865	510	335	0	3365 ¹	784	50	4099	2,6	52208	2,2
RO	445	2332	1777	0	0	0	4554 ¹	-249	12	4293	1,2	55574	5,1
RS	0	1698	818	0	0	0	2516	138	20	2634	-19,5	38065	n.a.
SI	407	418	429	0	0	0	1254 ¹	-225	0	1029	-7,1	13194	-1,3
SK	1128	523	358	24	0	0	2033 ¹	96	26	2103	0,7	27988	3,4
UCTE	54364	104212	34503	10233	5062	857	204169 ¹	323	3024	201468	0,3	2606283	3,5
UA_W	0	640	10	0	0	0	650	-386	0	264	-9,6	4330	4,4

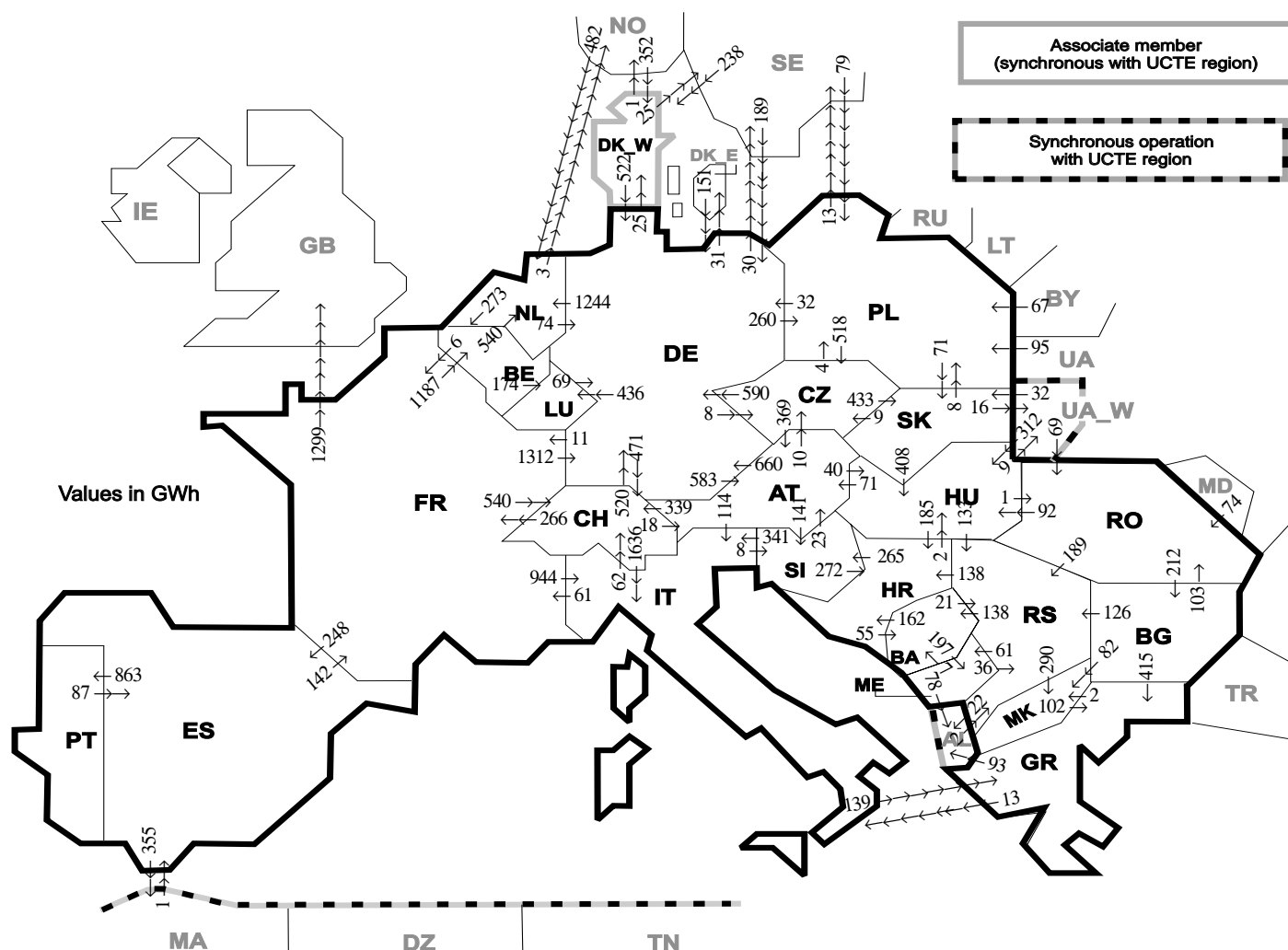
¹ Including deliveries from industry

² The reported figures are best estimates based on actual measurements and extrapolations

³ Operational data

All representativities of the national production and consumption values used to calculate values at a representativity of 100% as stated in the table above:

Countries	AT	BA	BE	BG	CH	CZ	DE	DK_W	ES	FR	GR	HR	HU	IT	LU	ME	MK	NL	PL	PT	RO	RS	SI	SK	UA_W
Production																									
Therm.nuclear	100	100	100	100	100	100	100	100	100	100	100	100	100	100	100	100	100	100	100	100	100	100	100	100	100
Fossil fuels	100	100	100	100	100	100	100	100	97	100	100	100	100	100	100	100	100	100	100	94	100	100	100	100	100
Hydro prod	100	100	100	100	100	100	100	100	100	100	100	100	100	100	100	100	100	100	100	100	100	100	100	100	100
Other renew.	100	100	100	100	100	100	100	100	95	100	100	100	100	100	100	100	100	100	100	100	100	100	100	100	100
Not identify	100	100	100	100	100	100	100	100	100	100	100	100	100	100	100	100	100	100	100	100	100	100	100	100	100
Consumption	100	100	100	100	100	100	100	100	98	100	100	100	100	100	100	100	100	100	100	97	100	100	100	100	100

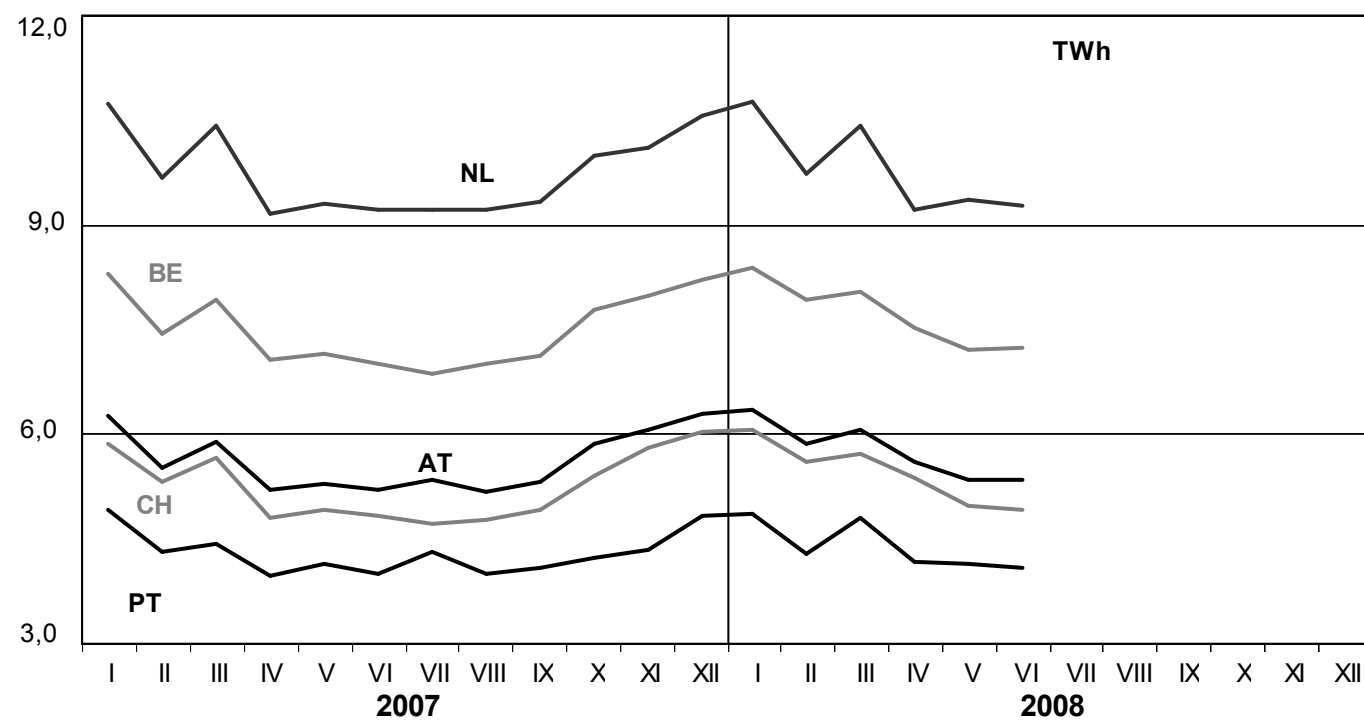
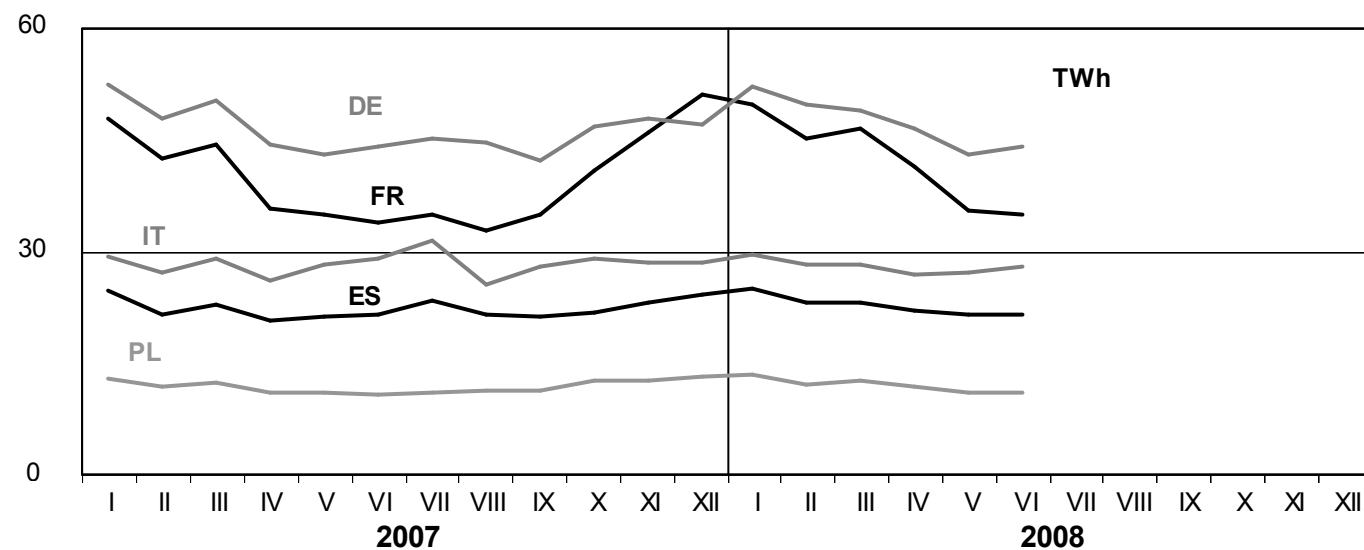
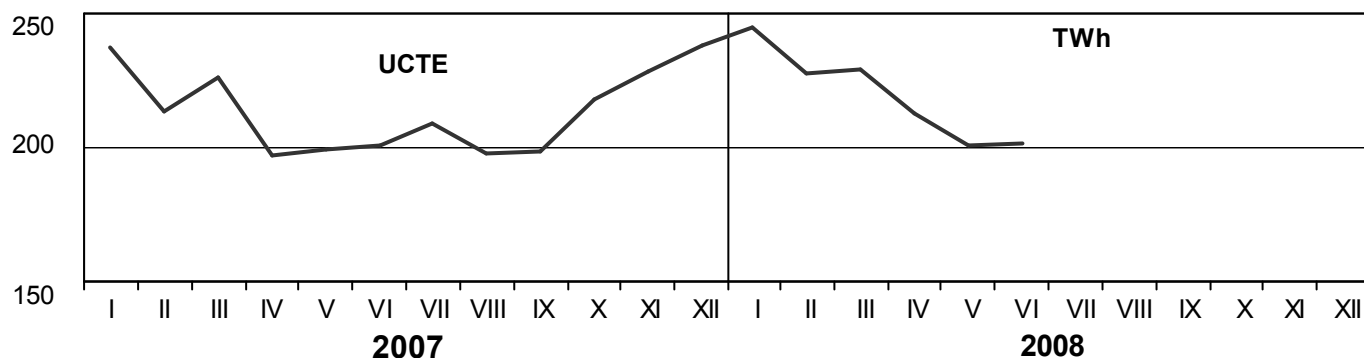


Exporting countries	AT	BA	BE	BG	CH	CZ	DE	DK_W	ES	FR	GR	HR	HU	IT	LU	ME	MK	NL	PL	PT	RO	RS	SI	SK	UA_W	Other III ¹	Sum export
AT	-	-	-	-	339	10	660	-	-	-	-	-	40	114	-	-	-	-	-	-	-	-	141	-	-	-	1304
BA	-	-	-	-	-	-	-	-	-	-	-	162	-	-	-	197	-	-	-	-	-	21	-	-	-	-	380
BE	-	-	-	-	-	-	-	-	-	6	-	-	-	-	174	-	-	540	-	-	-	-	-	-	-	-	720
BG	-	-	-	-	-	-	-	-	-	-	415	-	-	-	-	-	82	-	-	-	103	126	-	-	-	0	726
CH	18	-	-	-	-	-	520	-	-	266	-	-	-	1636	-	-	-	-	-	-	-	-	-	-	-	-	2440
CZ	369	-	-	-	-	-	590	-	-	-	-	-	-	-	-	-	-	-	4	-	-	-	-	433	-	-	1396
DE	583	-	-	-	471	8	-	25	-	11	-	-	-	436	-	-	-	1244	260	-	-	-	-	-	-	61	3099
DK_W	-	-	-	-	-	-	522	-	-	-	-	-	-	-	-	-	-	-	-	-	-	-	-	-	-	26	548
ES	-	-	-	-	-	-	-	-	-	142	-	-	-	-	-	-	-	-	-	863	-	-	-	-	-	355	1360
FR	-	-	1187	-	540	-	1312	-	248	-	-	-	-	944	-	-	-	-	-	-	-	-	-	-	-	1299	5530
GR	-	-	-	0	-	-	-	-	-	-	-	-	-	13	-	-	2	-	-	-	-	-	-	-	-	93	108
HR	-	55	-	-	-	-	-	-	-	-	-	-	2	-	-	-	-	-	-	-	-	0	265	-	-	-	322
HU	71	-	-	-	-	-	-	-	-	-	-	185	-	-	-	-	-	-	-	-	1	133	0	9	-	-	399
IT	0	-	-	-	62	-	-	-	-	61	139	-	-	-	-	-	-	-	-	-	-	-	8	-	-	-	270
LU	-	-	0	-	-	-	69	-	-	-	-	-	-	-	-	-	-	-	-	-	-	-	-	-	-	-	69
ME	-	7	-	-	-	-	-	-	-	-	-	-	-	-	-	-	-	-	-	-	-	36	-	-	-	78	121
MK	-	-	-	0	-	-	-	-	-	-	-	102	-	-	-	-	-	-	-	-	-	-	0	-	-	-	102
NL	-	-	273	-	-	-	74	-	-	-	-	-	-	-	-	-	-	-	-	-	-	-	-	-	-	3	350
PL	-	-	-	-	-	518	32	-	-	-	-	-	-	-	-	-	-	-	-	-	-	-	-	71	-	13	634
PT	-	-	-	-	-	-	-	-	-	-	-	-	-	-	-	-	-	-	-	-	-	-	-	-	-	-	87
RO	-	-	-	212	-	-	-	-	-	-	-	-	92	-	-	-	-	-	-	-	-	-	-	-	2	2	497
RS	-	138	-	0	-	-	-	-	-	-	-	138	0	-	61	290	-	-	-	-	0	-	-	-	-	22	649
SI	23	-	-	-	-	-	-	-	-	-	272	-	341	-	-	-	-	-	-	-	-	-	-	-	-	-	636
SK	-	-	-	-	-	9	-	-	-	-	-	-	408	-	-	-	-	-	8	-	-	-	-	-	16	-	441
UA_W	-	-	-	-	-	-	-	-	-	-	-	-	312	-	-	-	-	-	-	-	69	-	-	32	-	-	413
Other III ¹	-	-	-	0	-	-	340	590	1	0	0	-	-	-	-	0	-	482	241	-	74	2	-	-	-	-	1730
Sum imp	1064	200	1460	212	1412	545	4119	615	336	486	656	757	854	3048	610	258	374	2266	513	863	247	507	414	536	27	1952	24331

Sum of physical energy flows between UCTE countries = 20209GWh Total physical energy flows = 24331GWh

¹ Other III: Albania, Belarus, Denmark East, Great Britain, Morocco, Republic of Moldavia, Norway, Sweden, Republic of Turkey and Ukraine

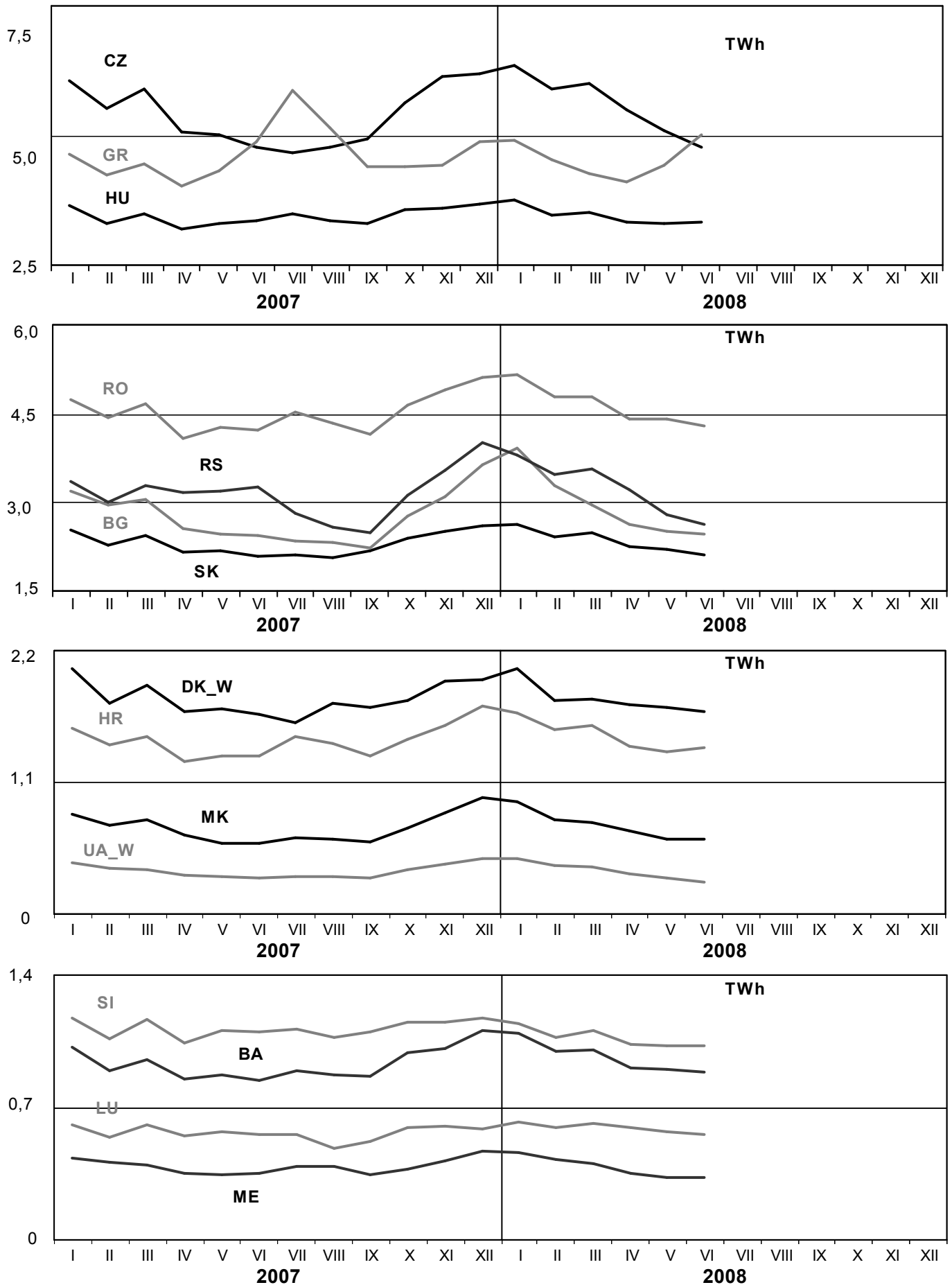
These physical energy flows were measured on the cross-frontier transmission lines (≤ 110 kV) listed in table 9 of the Statistical Yearbook. These values may differ from the official statistics and the exchange balances in chapter 1.



3

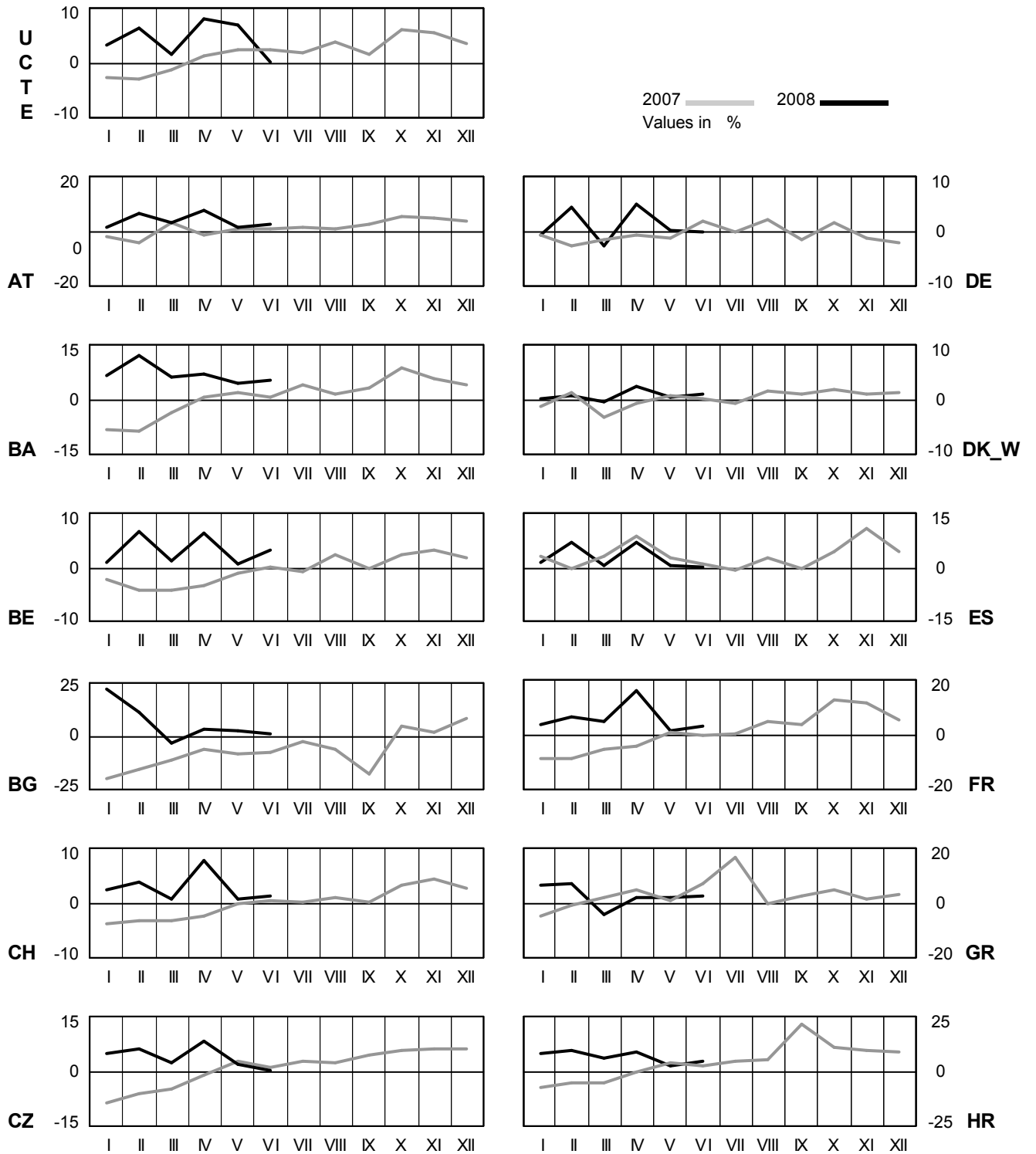
Monthly consumption

June 2008



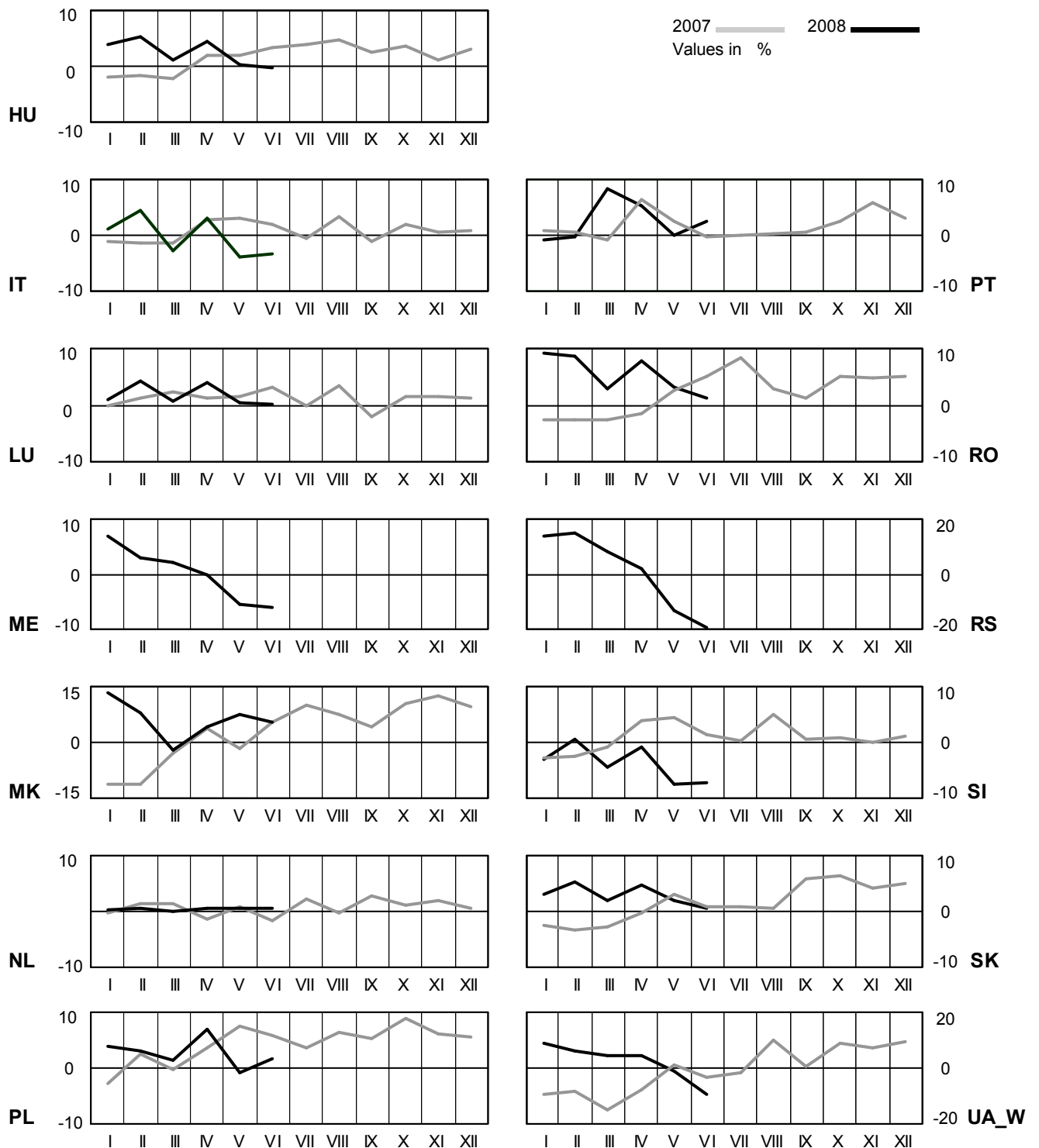
4 Monthly consumption variation

June 2008



4 Monthly consumption variation

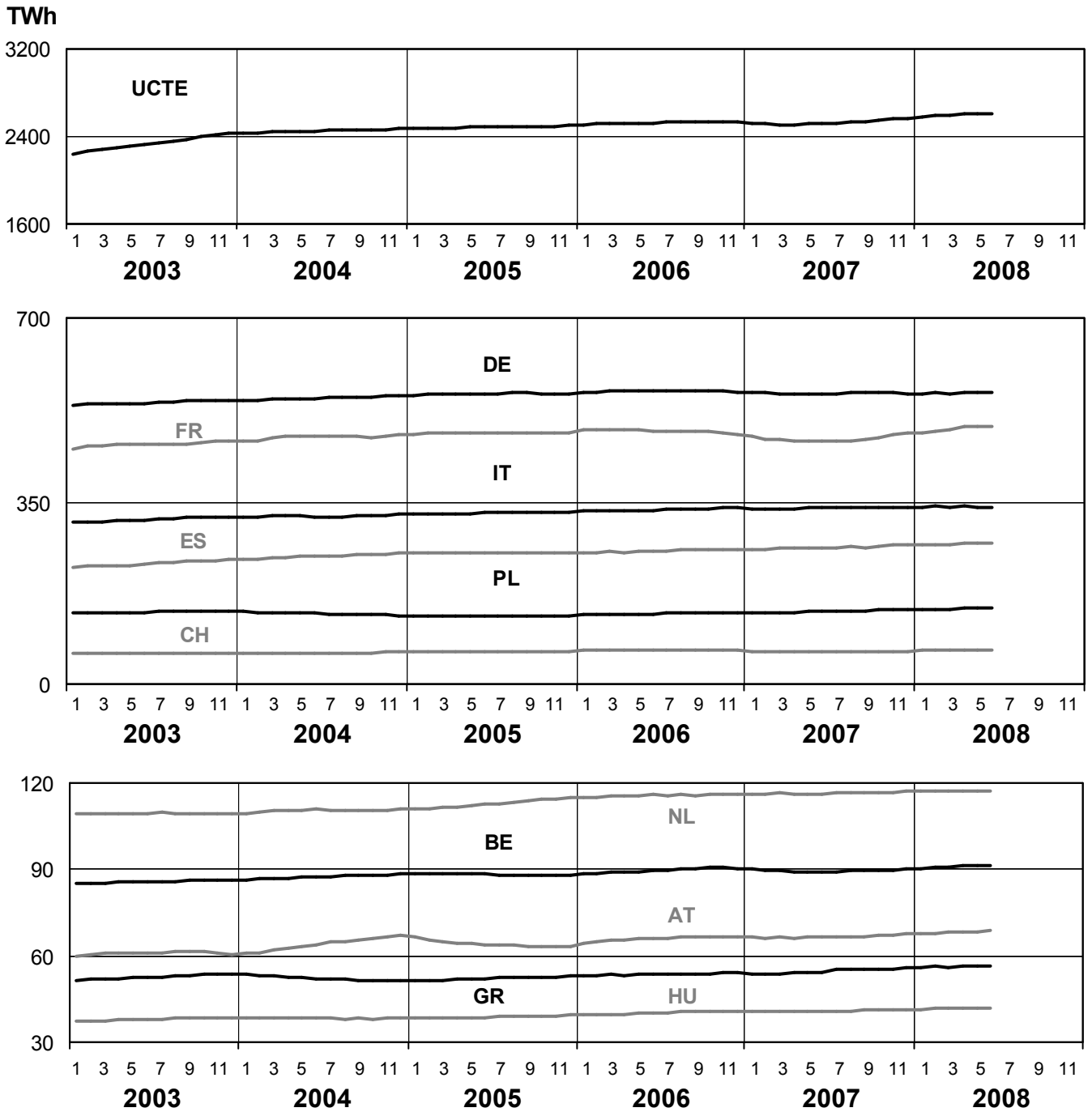
June 2008



5

Consumption of the last 12 months

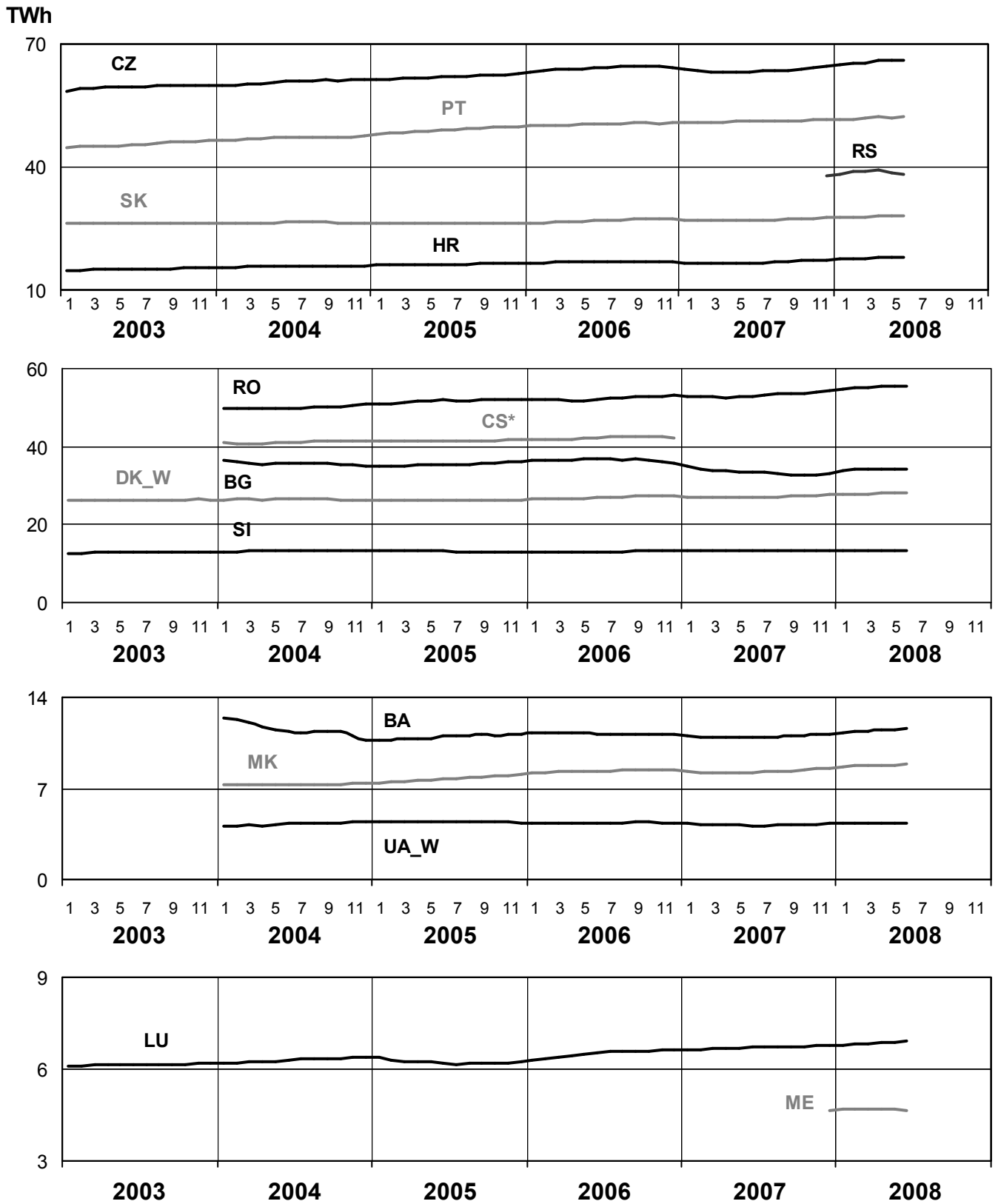
June 2008



5

Consumption of the last 12 months

June 2008

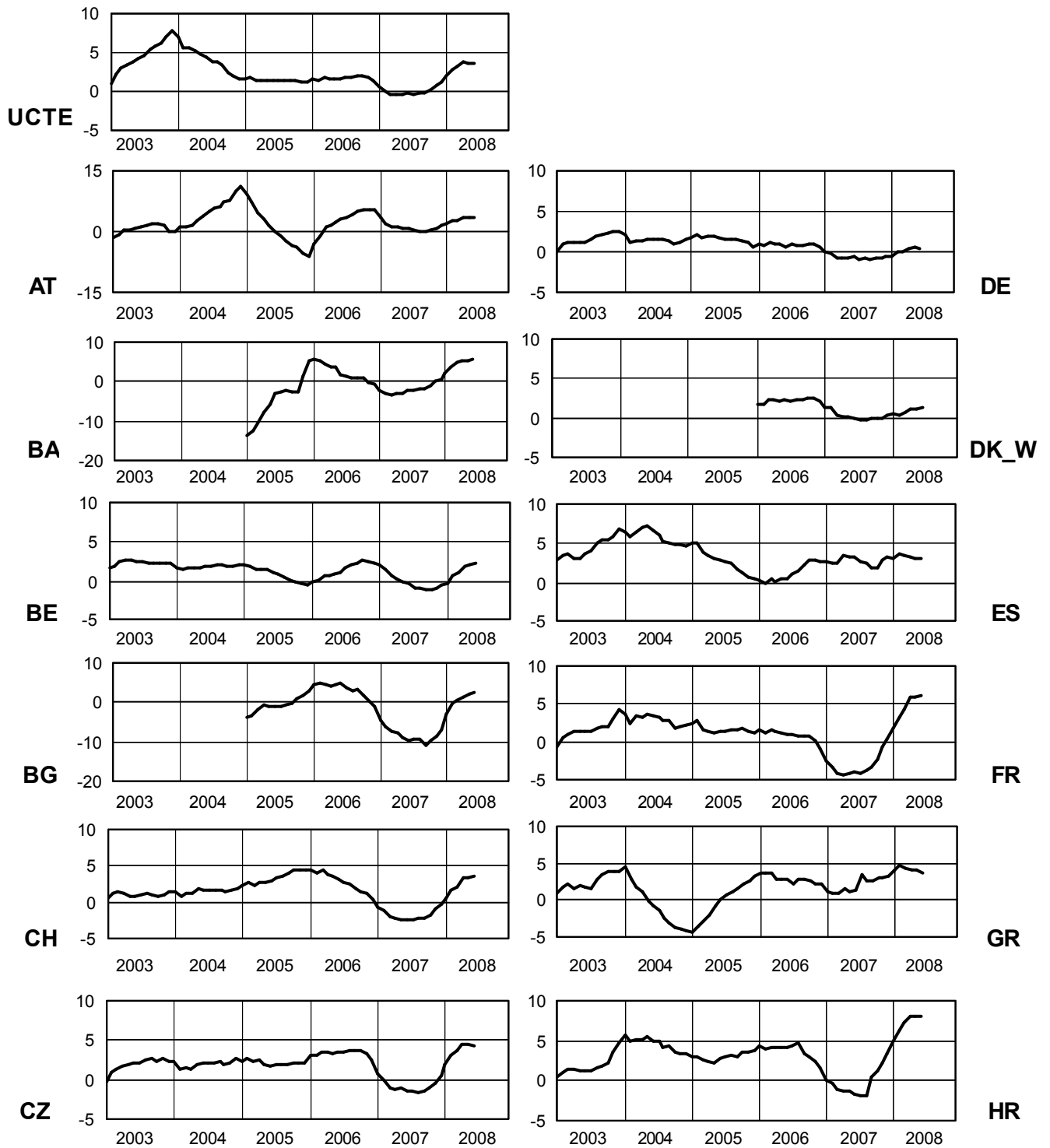


* CS consumption values until December 2006; from 2007 on ME and RS as separate countries

6

Variation of the last 12 months' consumption in %

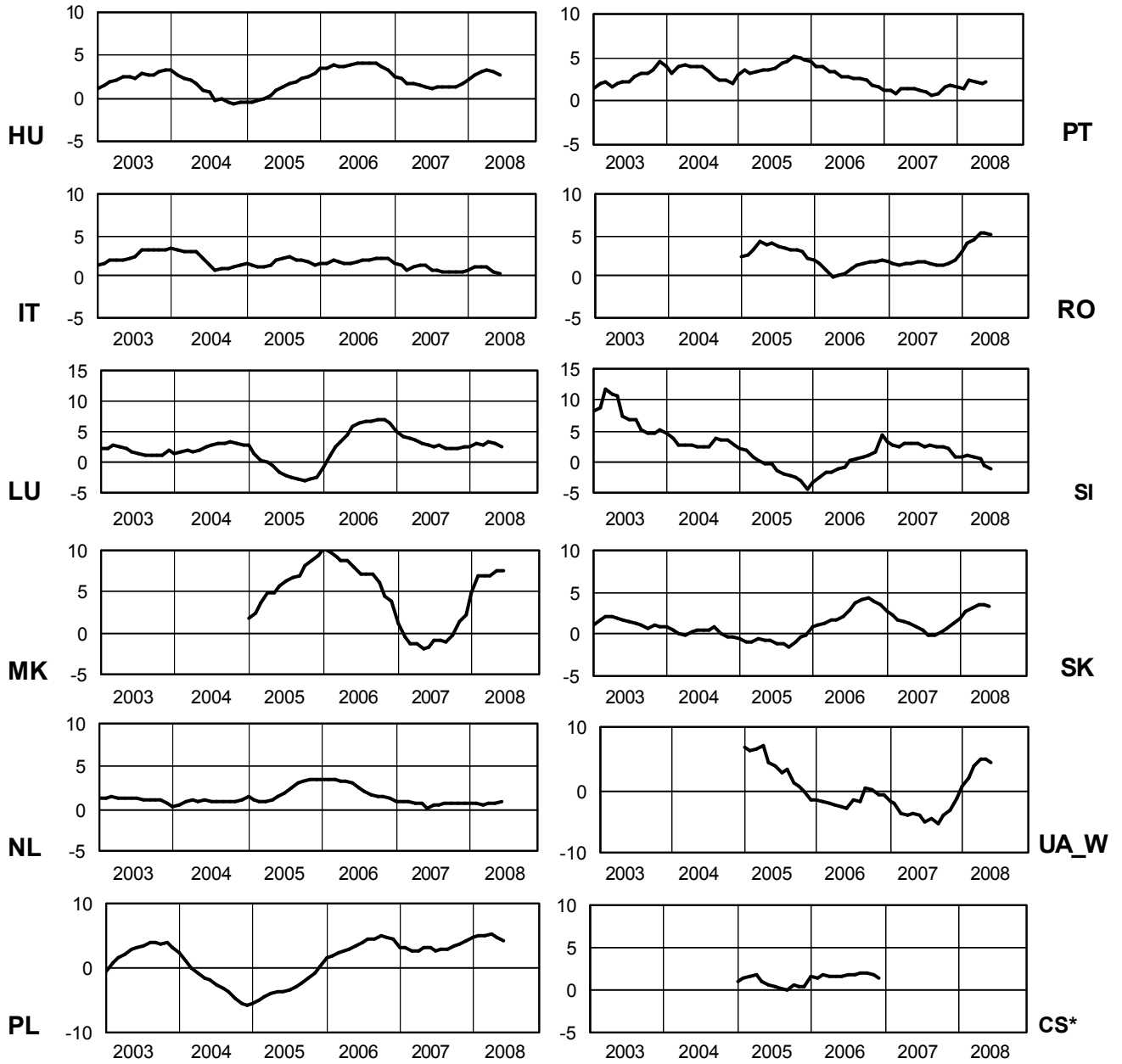
June 2008



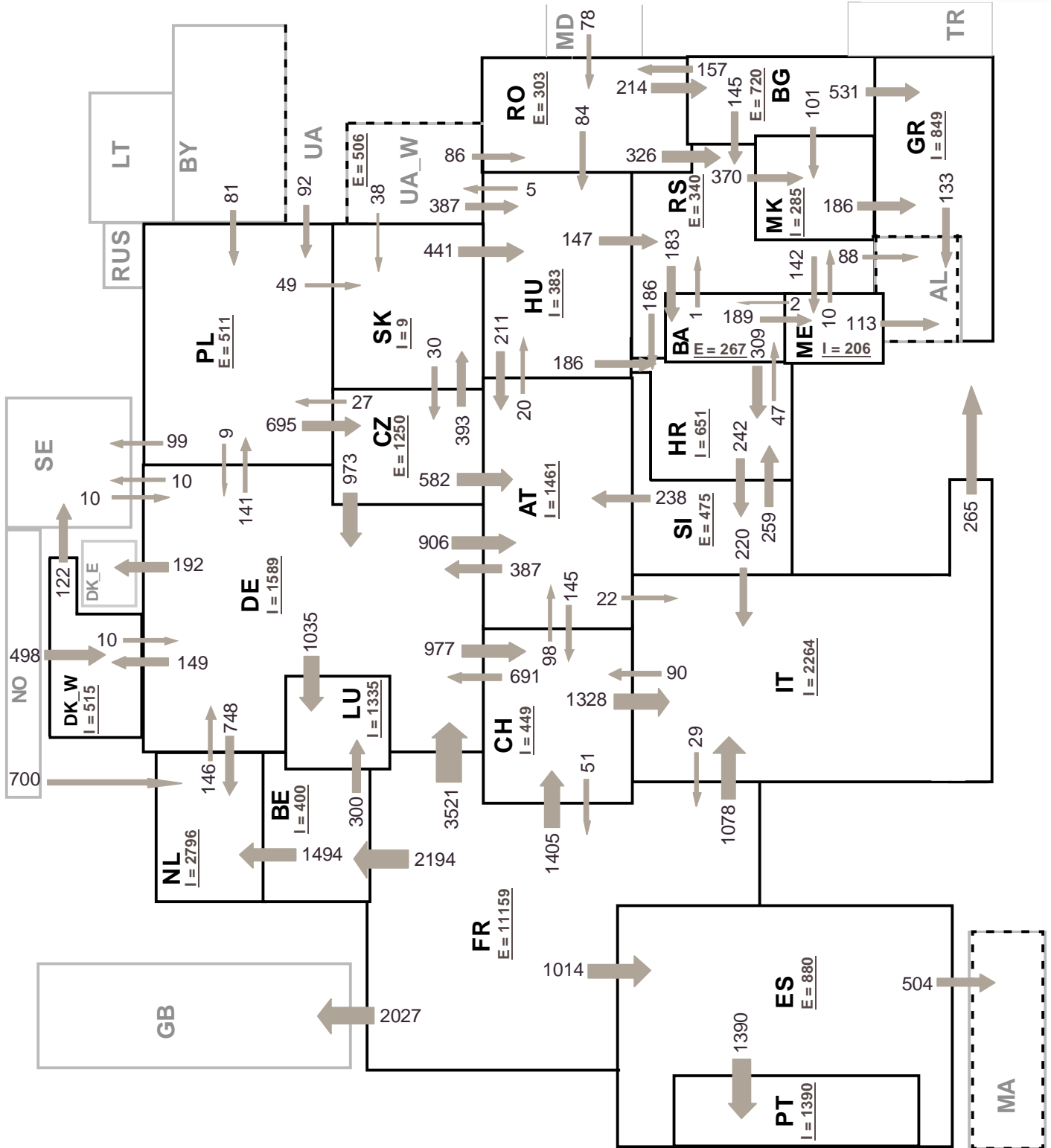
6

Variation of the last 12 months' consumption in %

June 2008



* CS consumption values until December 2006; from 2007 on ME and RS as separate countries



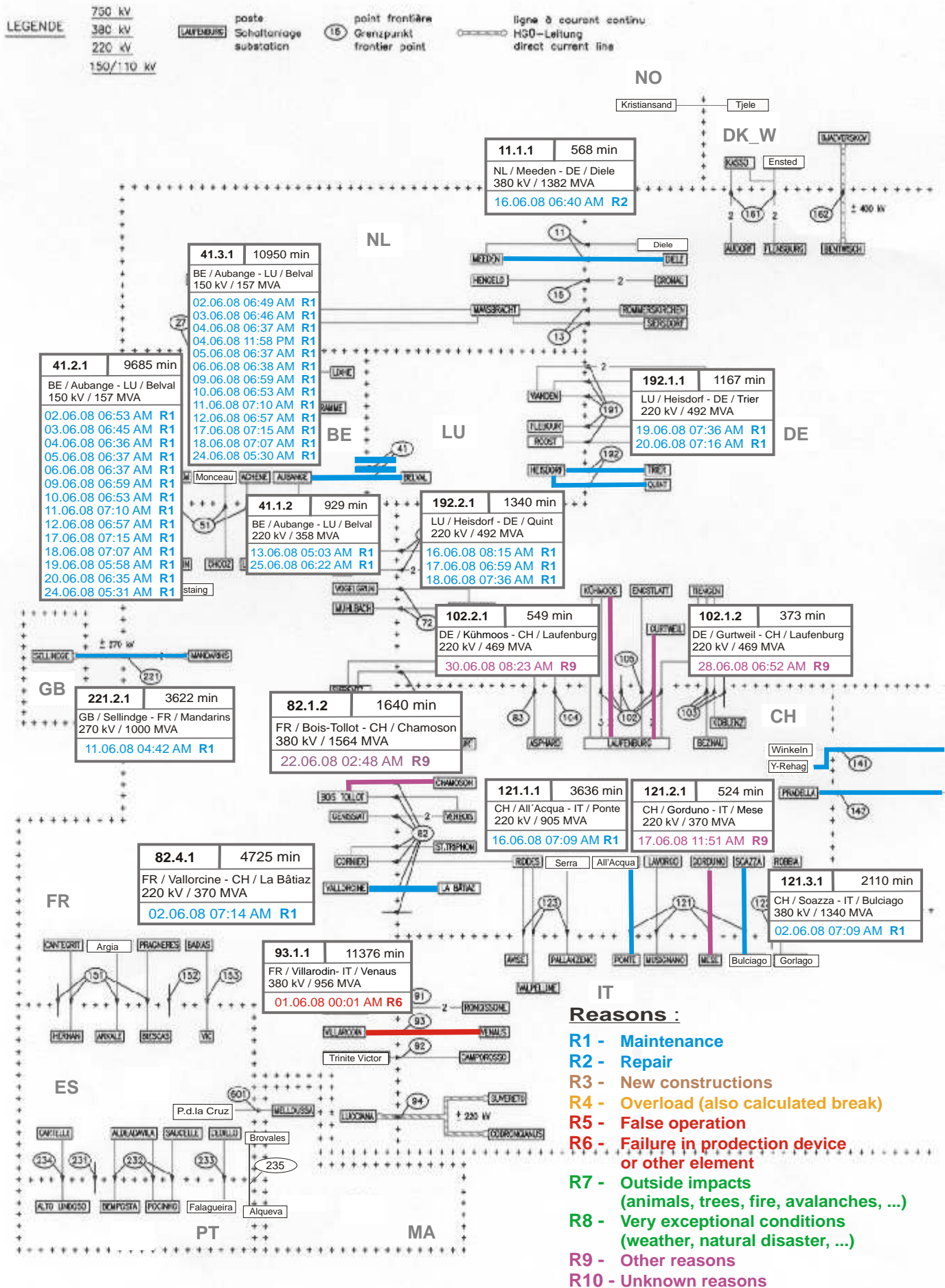
Sum of load flows in MW

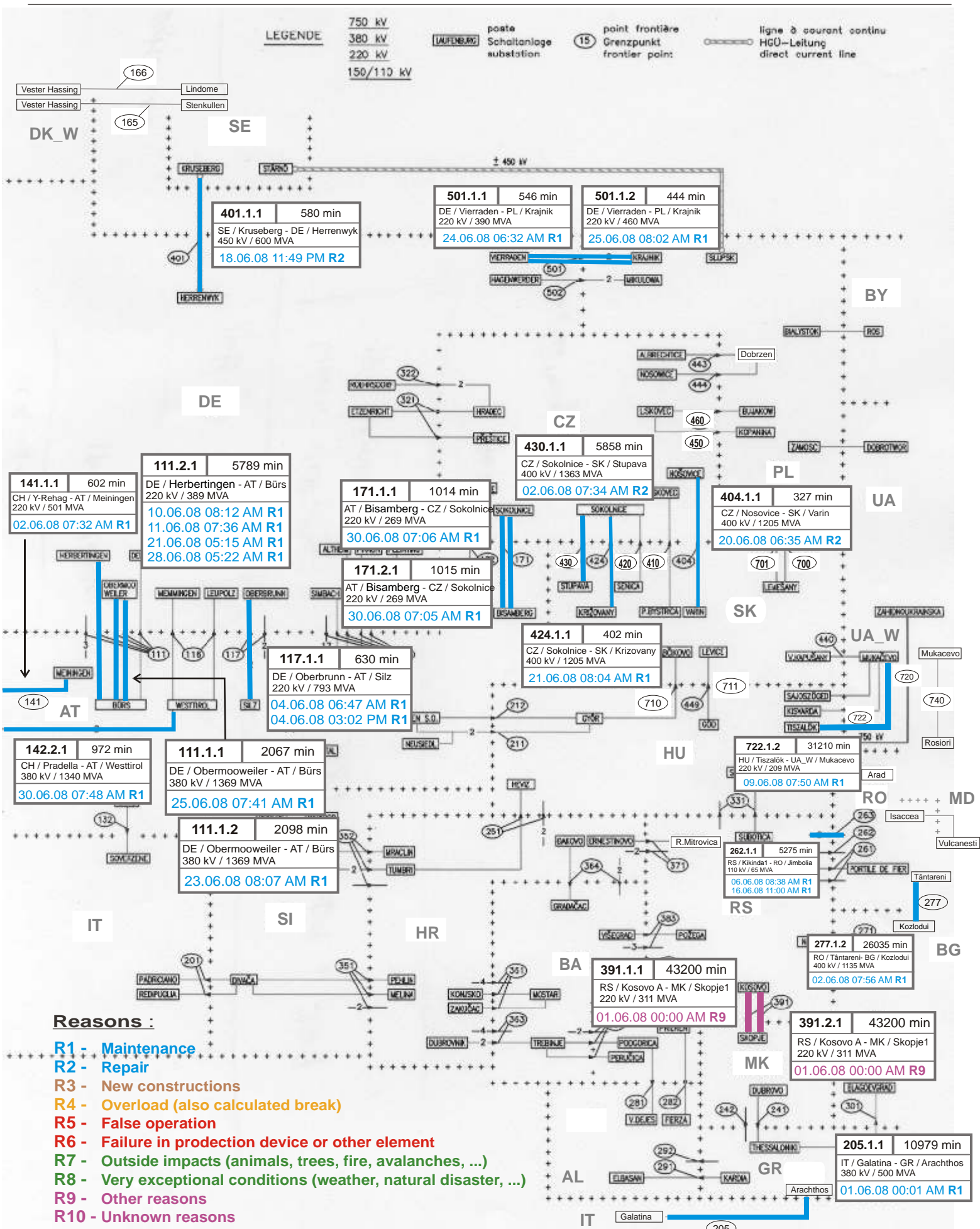
UCTE = 27519 MW

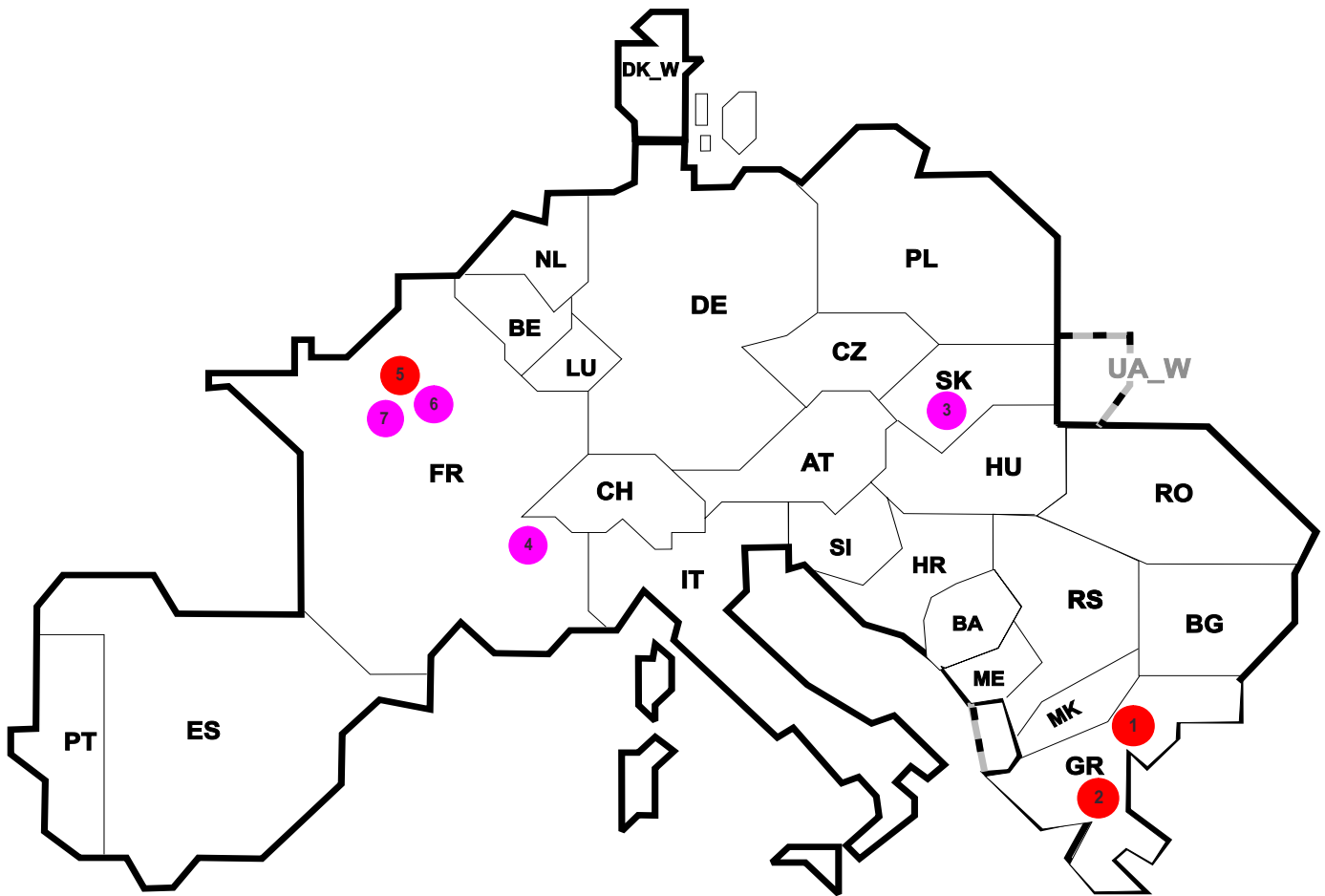
Total = 32782 MW

Synchronous operation with UCTE region

I = Import balance
E = Export balance







Reasons:

- R4 Overload (also calculated break)
- R5 False operation
- R6 Failure in protection device or other element
- R7 Outside impacts (animals, trees, fire, avalanches, ...)
(animals, trees, fire, avalanches, ...)
- R8 Very exceptional conditions
(weather, natural disaster, ...)
- R9 Other reasons
- R10 Unknown reasons

No	Country	Substation	Reason	Energy not supplied ² [MWh]	Total loss of power [MW]	Restoration time [min]	Equivalent time of interruption ¹
1	GR	Kardia	R6	4950	550	540	46,273
2	GR	Agios Dimitrios	R6	4300	860	300	40,196
3	SK	Levice	R9	46	70	15	0,866
4	FR	Ugine	R9	115	16	430	0,123
5	FR	Buttes Chaumont	R6	8	49	10	0,009
6	FR	Charenton	R9	6	12	32	0,007
7	FR	Pasquier	R9	6	18	18	0,006

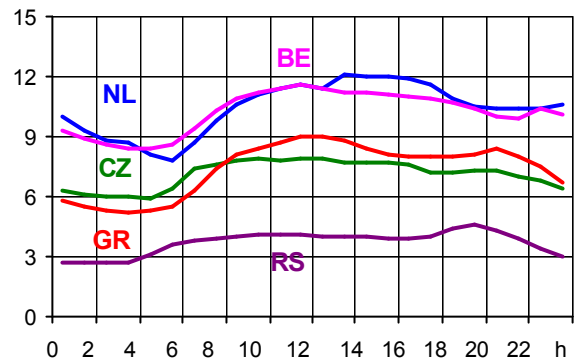
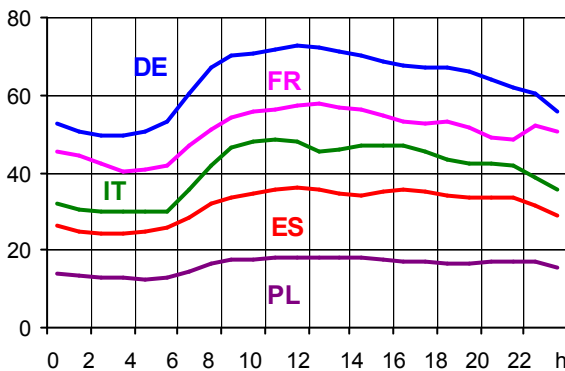
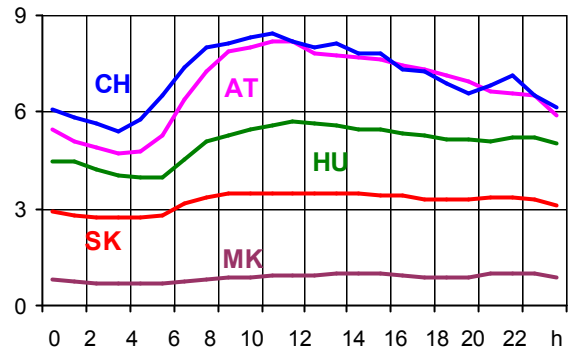
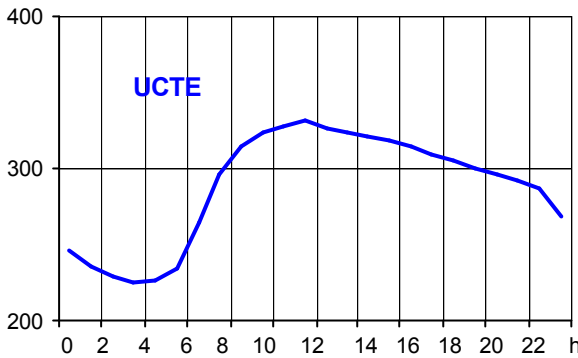
¹ (year [in min] * energy not supplied) / consumption last 12 months

Control area	Export Programs	Import Programs	Export Programs at 03:00	Import Programs at 03:00	Export Programs at 11:00	Import Programs at 11:00
AT	356858	772882	1477	0	962	366
BA	376542	200641	270	141	334	141
BE	360655	1287957	1285	2031	173	2000
BG	n.a.	n.a.	n.a.	n.a.	n.a.	n.a.
CH	2421623	1414215	2393	2856	4299	2256
CZ	1157344	4707621	2464	1207	2692	1761
DE	1951786	2339849	1793	5156	1503	3202
DK_W	911456	98492	500	1307	840	650
ES	1431343	388464	1913	1005	1930	300
FR	7385129	2329898	11616	522	10912	4451
GR	41555	588733	21	875	44	950
HR	37923	470256	0	652	0	687
HU	586412	1042651	834	1219	702	1664
IT	270483	3047993	384	2648	392	3082
ME	161321	298209	122	325	158	397
MK	7700	282200	0	283	0	435
NL	344820	2262443	549	3347	427	2549
PL	312905	176430	599	95	500	215
PT	3150	785244	0	1400	0	700
RO	334953	83411	399	90	570	118
RS	523596	353451	494	363	765	687
SI	586354	363612	771	303	1049	609
SK	499484	525077	501	430	792	975
UA_W	386969	4320	515	10	569	20

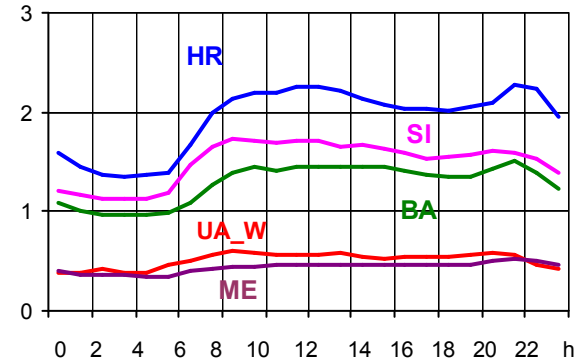
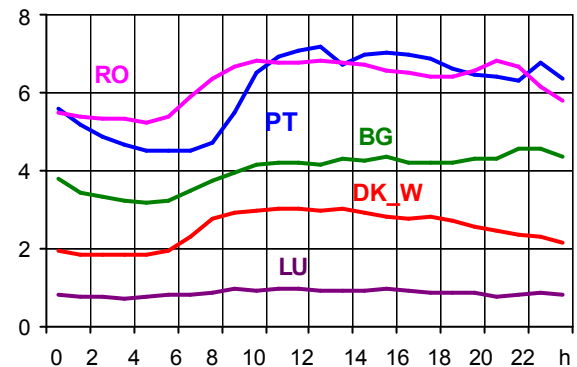
- Control areas can differ from national borders (i.e. German block which includes parts of AT, LU and DK).
- Values are calculated on an hourly base (MWh).
- This values are not the provisional values entered in the VULCANUS system, but the definitive values after an eventual correction during the actual date.
- Export Programs: Sum of all positive values of every hour of every border
- Import Programs: Sum of all negative values of every hour of every border
- Export Programs at 03:00: Sum of all positive values the third Wednesday from 02:00 to 03:00 a.m.
- Import Programs at 03:00: Sum of all negative values the third Wednesday from 02:00 to 03:00 a.m.
- Export Programs at 11:00: Sum of all positive values the third Wednesday from 10:00 to 11:00 a.m.
- Import Programs at 11:00: Sum of all negative values the third Wednesday from 10:00 to 11:00 a.m.

Consumption hourly load curves on 18.06.2008 CET

Values in GW



	Highest load MW	var.% ¹	Load representativity %
AT	8205	3,8	100
BA	1502	2,6	100
BE ²	11567	-2,7	100
BG	4560	1,4	100
CH	8416	-3,2	100
CZ	7939	-1,9	100
DE	72958	-4,3	91
DK_W	3049	0,8	100
ES	35903	-1,4	98
FR	57592	1,5	100
GR	9007	-3,6	100
HR	2267	-7,3	100
HU	5688	-7,0	100
IT	48492	-10,1	100
LU	986	3,9	100
ME	524	-7,1	100
MK	1021	1,3	100
NL	12088	-17,3	100
PL ³	18261	2,4	100
PT	7176	2,5	97
RO	6842	-0,1	100
RS	4598	-1,1	100
SI	1731	-14,4	100
SK	3496	-1,4	100
UCTE	331209	-2,4	
UA_W	599	-5,7	100



¹ Variation as compared to corresponding month of the previous year

² The reported figures are best estimates based on actual measurements and extrapolations.

³ Operational data

Contact

Boulevard Saint-Michel, 15
B-1040 Brussels – Belgium
Tel +32 2 741 69 40
Fax +32 2 741 69 49

info@ucte.org
www.ucte.org