

UCTE



June 2007

Monthly provisional values
union for the co-ordination of transmission of electricity

Table of contents		Page
1	Electricity supply situation of the countries	2
2	Physical energy flows	3
3	Monthly consumption	4
4	Monthly consumption variation	6
5	Consumption of the last 12 months	8
6	Variation of the last 12 months' consumption	10
7	Load flows (night)	12
8	Load flows (day)	13
9	Unavailability of international tie lines (major events)	14
10	Network reliability (major events)	16
11	Scheduled exchanges	17
12	Load on the 3 rd Wednesday	18

General remarks and abbreviations used in the tables

- All values of production and consumption in chapter 1, 3&4, 5&6 and 12 are calculated to represent 100% of the national values.
- DK_W Denmark West represents the Western part of Denmark synchronously interconnected with UCTE (Jutland and Funen).
- UA_W Ukraine West represents the so-called Burshtyn Island synchronously interconnected with UCTE.
- CET Central European Time
- The Bulgarian values of production and consumption are gross values.

Countries	Net production in GWh							Exchange balance in GWh	Pump in GWh	Consumption in GWh			
	Therm. nuclear	Therm. conv.	Hydro prod	Other renew.	Of which wind	Not identify	Total			monthly	var. [%]	last 12 months	var. [%]
AT	0	1271	3203	0	0	588	5062 ¹	457	320	5199	0,9	66345	0,7
BA	0	537	259	0	0	0	796	46	0	842	0,6	10921	-2,3
BE ²	3973	2548	134	189	25	0	6844 ¹	284	145	6983	0,5	88622	-0,8
BG	977	1667	419	0	0	0	3063	-605	20	2438	-7,3	33336	-9,7
CH	1799	163	4370	80	1	0	6412 ¹	-1326	262	4824	0,7	62145	-2,4
CZ	1858	3775	135	17	6	0	5785 ¹	-964	46	4775	1,1	63210	-1,4
DE	10535	28006	2232	3792	1964	0	44565 ¹	133	681	44017	1,9	556520	-0,6
ES	3164	13923	2534	2355	1603	0	21976 ¹	-223	351	21401	0,5	262944	3,0
FR	30865	2480	7146	514	241	0	41005 ¹	-6711	454	33840	-0,5	465833	-4,0
GR	0	3998	336	80	67	0	4414 ¹	562	83	4893	7,0	54356	1,4
HR	0	489	271	1	1	0	761 ¹	572	10	1323	2,2	16589	-1,7
HU ³	1075	1778	0	0	0	0	2853 ¹	511	0	3364	3,4	40647	1,3
IT	0	20036	4609	674	255	0	25319 ¹	3807	598	28528	0,4	337676	1,1
LU	0	239	65	9	4	0	313	323	83	553	6,3	6720	2,9
ME	0	0	35	0	0	0	35	316	0	351	n.a.	2286	n.a.
MK	0	207	84	0	0	0	291 ¹	296	0	587	4,8	8202	-1,6
NL	341	6660	0	522	139	0	7523 ¹	1978	0	9501	1,3	116609	0,6
PL	0	10839	168	31	22	0	11038 ¹	-176	80	10782	5,9	138086	3,0
PT	0	2232	818	461	291	0	3511 ¹	508	21	3998	-0,1	51085	1,5
RO	463	2602	1322	0	0	0	4387 ¹	-131	15	4241	5,0	52900	1,8
RS	0	2281	706	0	0	0	2987	56	59	2984	n.a.	20120	n.a.
SI	482	266	237	0	0	0	985	123	0	1108	1,4	13362	2,8
SK	1101	487	317	23	0	0	1928 ¹	171	10	2089	0,9	27068	0,9
DK_W	0	1157	2	317	213	0	1476 ¹	192	0	1668	0,1	21629	0,03
UCTE⁴	56633	107641	29402	9065	4832	588	203329¹	199	3238	200289	1,4	2537462	-0,4
UA_W	0	599	7	0	0	0	606 ¹	-314	0	292	-3,3	4148	-4,2

¹ Including deliveries from industry

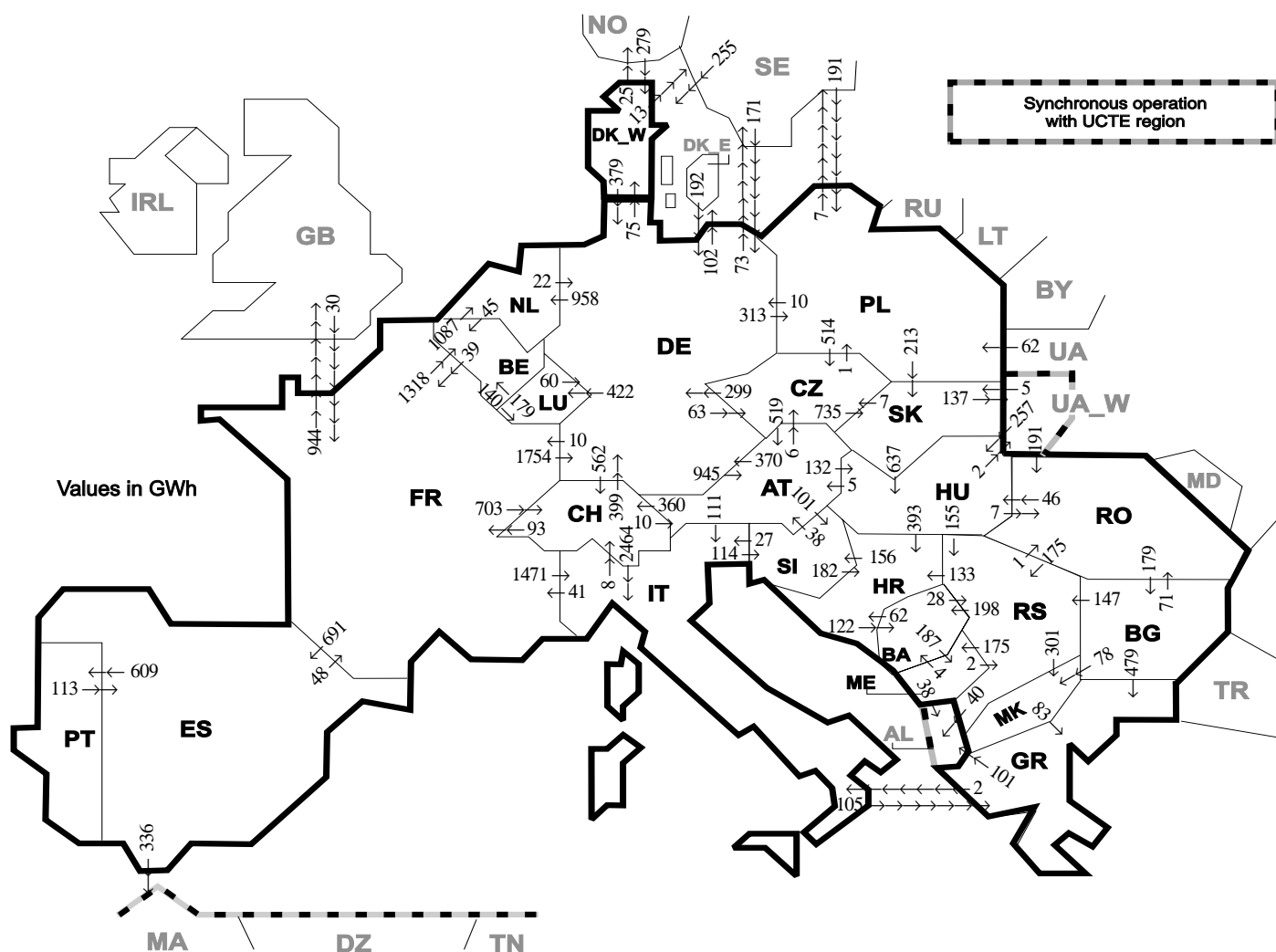
² The reported figures are best estimates based on actual measurements and extrapolations

³ Data on hydro, other renewable, not clearly identifiable production are not yet available

⁴ From June 2007 on including DK_W

All representativities of the national production and consumption values used to calculate values at a representativity of 100% as stated in the table above

Countries	AT	BA	BE	BG	CH	CZ	DE	ES	FR	GR	HR	HU	IT	LU	ME	MK	NL	PL	PT	RO	RS	SI	SK	DK_W	UA_W
Production																									
Thermnuclear	100	100	100	100	100	100	100	100	100	100	100	100	100	100	100	100	100	100	100	100	100	100	100	100	100
Thermal conv.	100	100	100	100	100	100	100	97	100	100	100	100	100	100	100	100	100	100	95	100	100	100	100	100	100
Hydro prod	100	100	100	100	100	100	100	100	100	100	100	100	100	100	100	100	100	100	100	100	100	100	100	100	100
Other renew.	100	100	100	100	100	100	100	95	100	100	100	100	100	100	100	100	100	100	100	100	100	100	100	100	100
Not identify	100	100	100	100	100	100	100	100	100	100	100	100	100	100	100	100	100	100	100	100	100	100	100	100	100
Consumption	100	100	100	100	100	100	100	98	100	100	100	100	100	100	100	100	100	100	97	100	100	95	100	100	100



Exporting countries	AT	BA	BE	BG	CH	CZ	DE	ES	FR	GR	HR	HU	IT	LU	ME	MK	NL	PL	PT	RO	RS	SI	SK	DK_W	UA_W	Other III ¹	Sum export
AT	-	-	-	-	360	6	370	-	-	-	-	132	111	-	-	-	-	-	-	-	-	101	-	-	-	-	1080
BA	-	-	-	-	-	-	-	-	-	-	62	-	-	-	187	-	-	-	-	-	28	-	-	-	-	-	277
BE	-	-	-	-	-	-	-	-	39	-	-	-	-	140	-	-	1087	-	-	-	-	-	-	-	-	-	1266
BG	-	-	-	-	-	-	-	-	-	479	-	-	-	-	78	-	-	-	71	147	-	-	-	-	-	0	775
CH	10	-	-	-	-	-	399	-	93	-	-	-	2464	-	-	-	-	-	-	-	-	-	-	-	-	-	2966
CZ	519	-	-	-	-	-	-	-	299	-	-	-	-	-	-	-	-	1	-	-	-	-	735	-	-	-	1554
DE	945	-	-	-	562	63	-	-	10	-	-	-	422	-	-	-	958	313	-	-	-	-	-	75	175	-	3523
ES	-	-	-	-	-	-	-	-	48	-	-	-	-	-	-	-	-	-	609	-	-	-	-	-	-	336	993
FR	-	-	1318	-	703	-	1754	691	-	-	-	-	1471	-	-	-	-	-	-	-	-	-	-	-	-	944	6881
GR	-	-	-	0	-	-	-	-	-	-	-	-	2	-	-	0	-	-	-	-	-	-	-	-	-	101	103
HR	-	122	-	-	-	-	-	-	-	-	-	0	-	-	-	-	-	-	-	-	0	156	-	-	-	-	278
HU	5	-	-	-	-	-	-	-	-	-	393	-	-	-	-	-	-	-	-	7	155	0	-	2	-	-	562
IT	0	-	-	-	8	-	-	-	41	105	-	-	-	-	-	-	-	-	-	-	-	114	-	-	-	-	268
LU	-	-	179	-	-	-	60	-	-	-	-	-	-	-	-	-	-	-	-	-	-	-	-	-	-	-	239
ME	-	4	-	-	-	-	-	-	-	-	-	-	-	-	-	-	-	-	-	-	-	-	-	-	-	38	44
MK	-	-	-	0	-	-	-	-	-	-	83	-	-	-	-	-	-	-	-	-	-	0	-	-	-	-	83
NL	-	-	45	-	-	-	22	-	-	-	-	-	-	-	-	-	-	-	-	-	-	-	-	-	-	-	67
PL	-	-	-	-	-	514	10	-	-	-	-	-	-	-	-	-	-	-	-	-	-	213	-	-	-	7	744
PT	-	-	-	-	-	-	-	113	-	-	-	-	-	-	-	-	-	-	-	-	-	-	-	-	-	-	113
RO	-	-	-	179	-	-	-	-	-	-	-	46	-	-	-	-	-	-	-	-	175	-	-	-	0	0	400
RS	-	198	-	0	-	-	-	-	-	-	133	0	-	-	175	301	-	-	-	1	-	-	-	-	-	40	848
SI	38	-	-	-	-	-	-	-	-	-	182	27	-	-	-	-	-	-	-	-	-	-	-	-	-	-	247
SK	-	-	-	-	-	7	-	-	-	-	-	637	-	-	-	-	-	0	-	-	-	-	-	-	-	-	781
DK_W	-	-	-	-	-	-	379	-	-	-	-	-	-	-	-	-	-	-	-	-	-	-	-	137	-	38	417
UA_W	-	-	-	-	-	-	-	-	-	-	-	257	-	-	-	-	-	-	-	-	191	-	5	-	-	-	453
Other III ¹	-	-	-	0	-	-	363	0	30	0	-	-	-	-	0	-	-	253	-	0	0	-	-	534	-	-	1180
Sum imp	1517	324	1542	179	1633	590	3656	804	261	667	770	1072	4075	562	362	379	2045	567	609	270	507	371	953	609	139	1679	26142

Sum of physical energy flows between UCTE countries = 22691GWh Total physical energy flows = 26142GWh

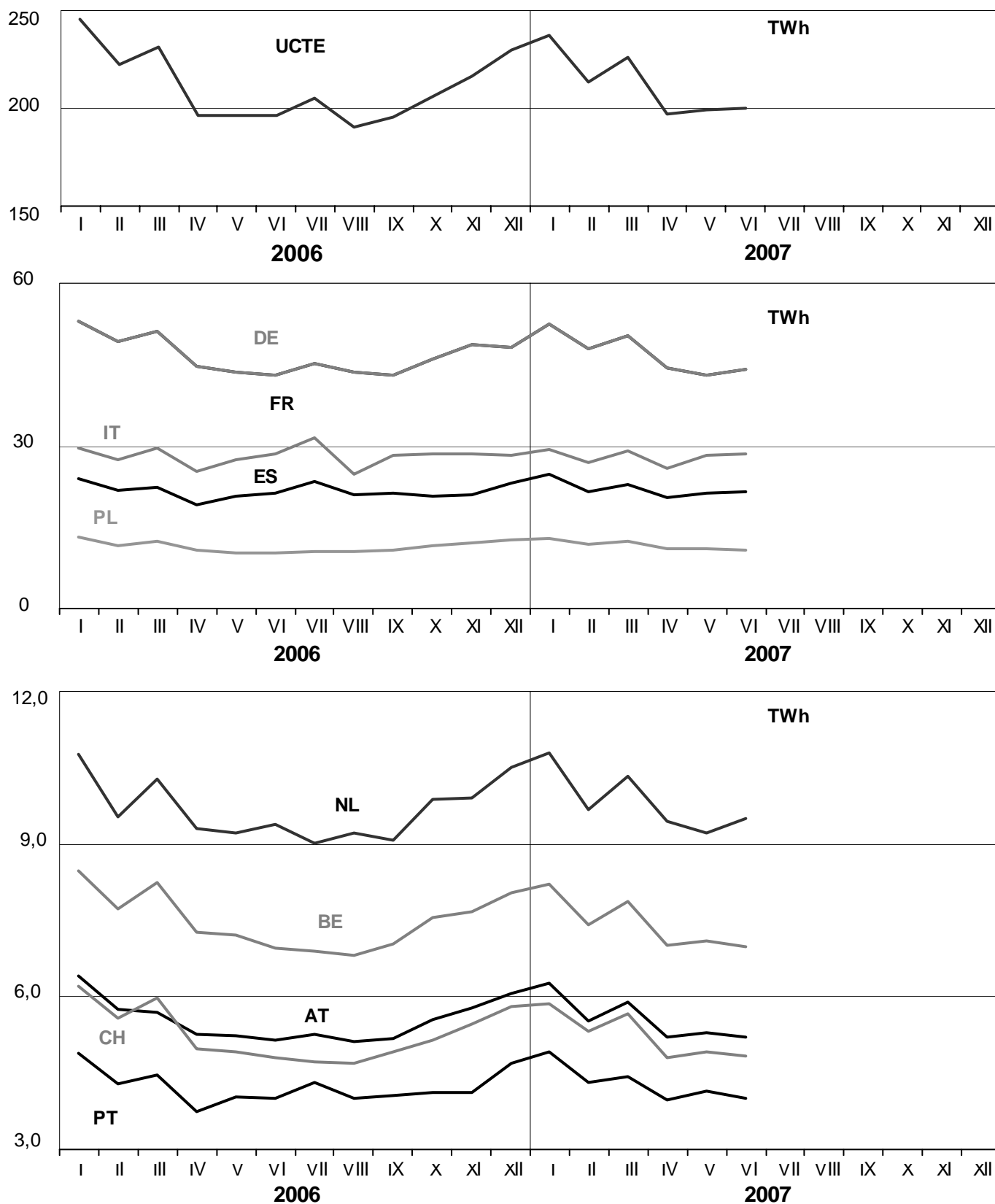
¹ Other III: Albania, Belarus, Denmark East, Great Britain, Morocco, Republic of Moldavia, Norway, Sweden, Republic of Turkey and Ukraine

These physical energy flows were measured on the cross-frontier transmission lines (≤ 110 kV) listed in table 9 of the Statistical Yearbook. These values may differ from the official statistics and the exchange balances in chapter 1.

3

Monthly consumption

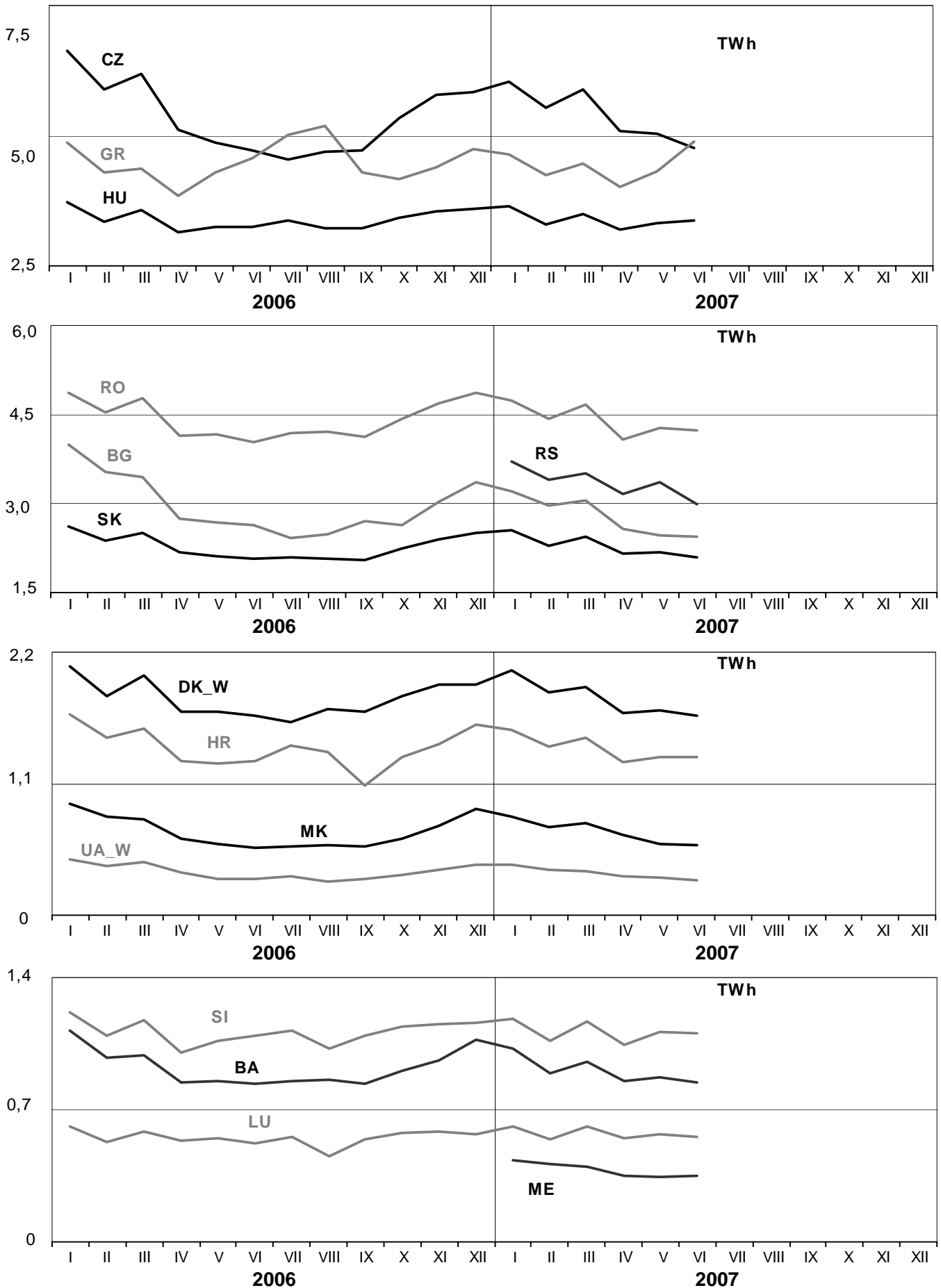
June 2007



3

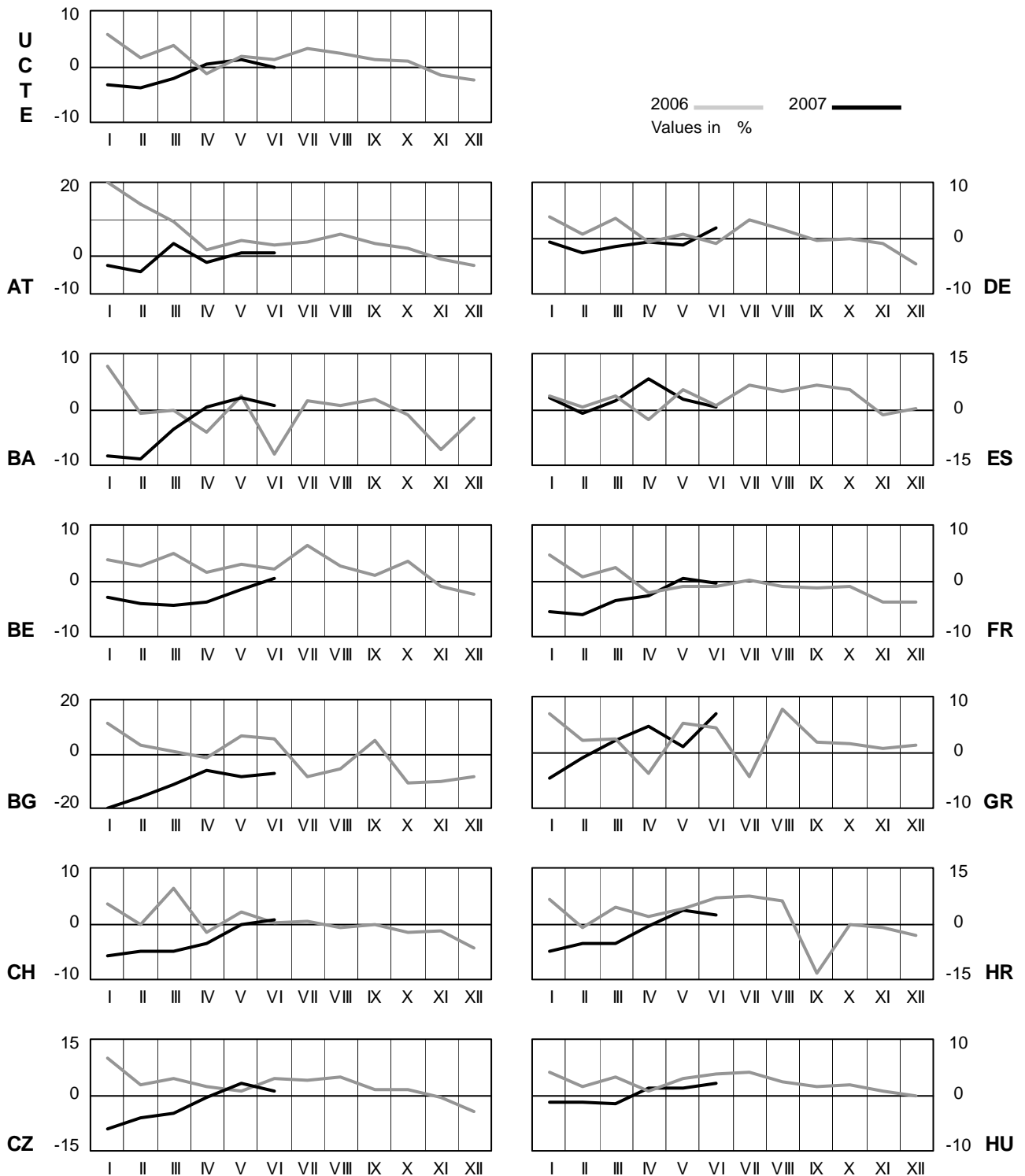
Monthly consumption

June 2007



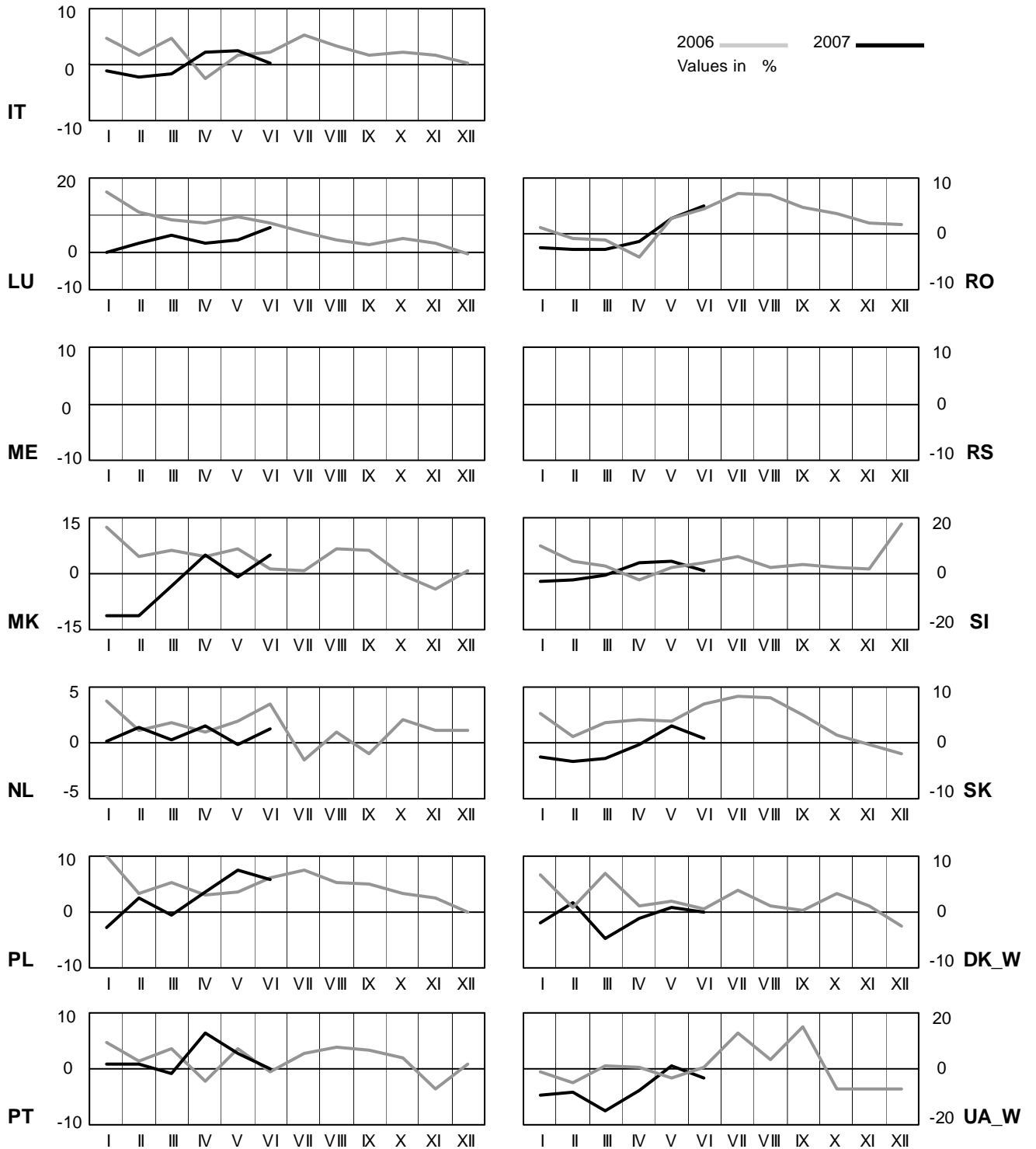
4 Monthly consumption variation

June 2007



4 Monthly consumption variation

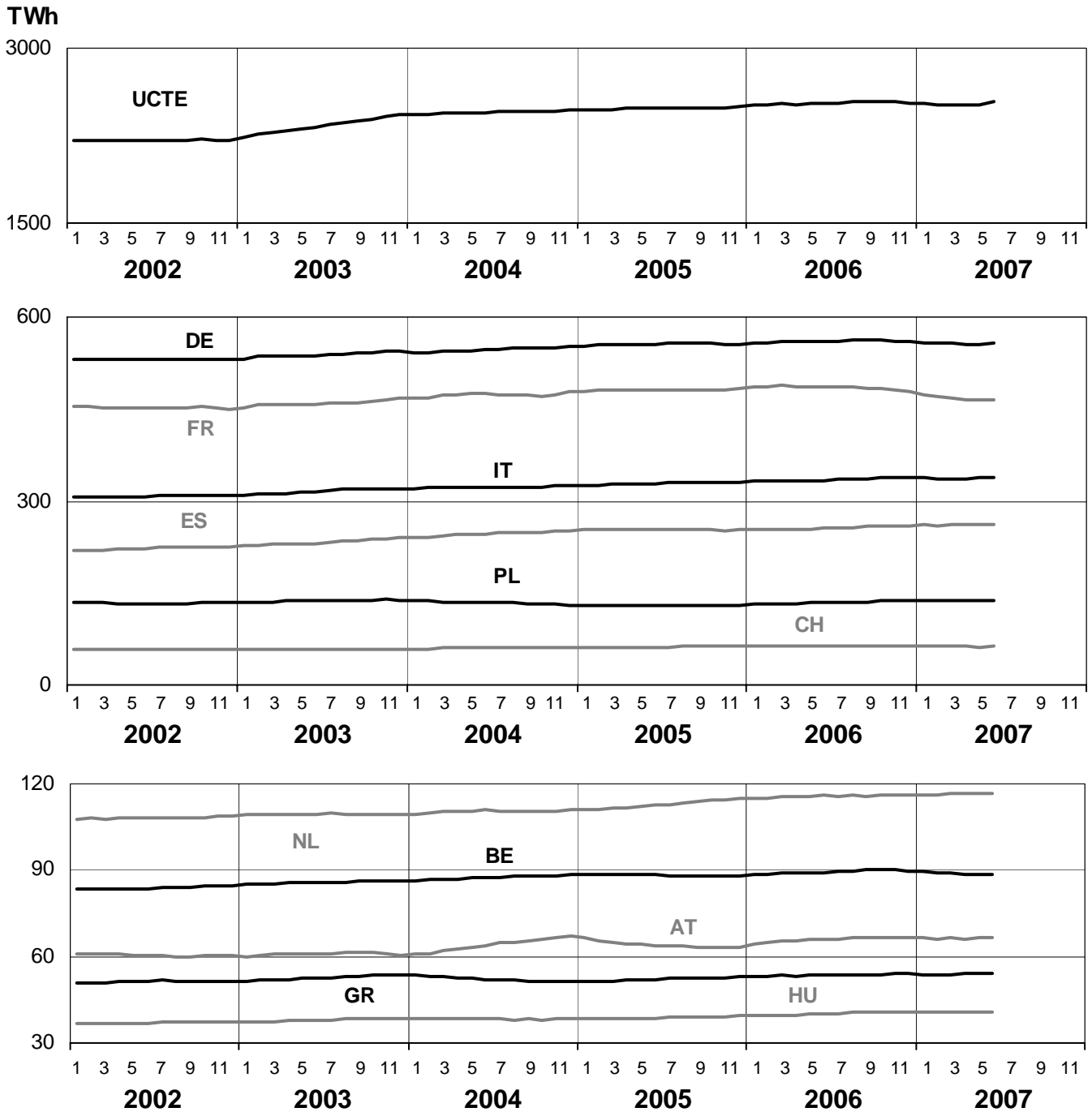
June 2007



5

Consumption of the last 12 months

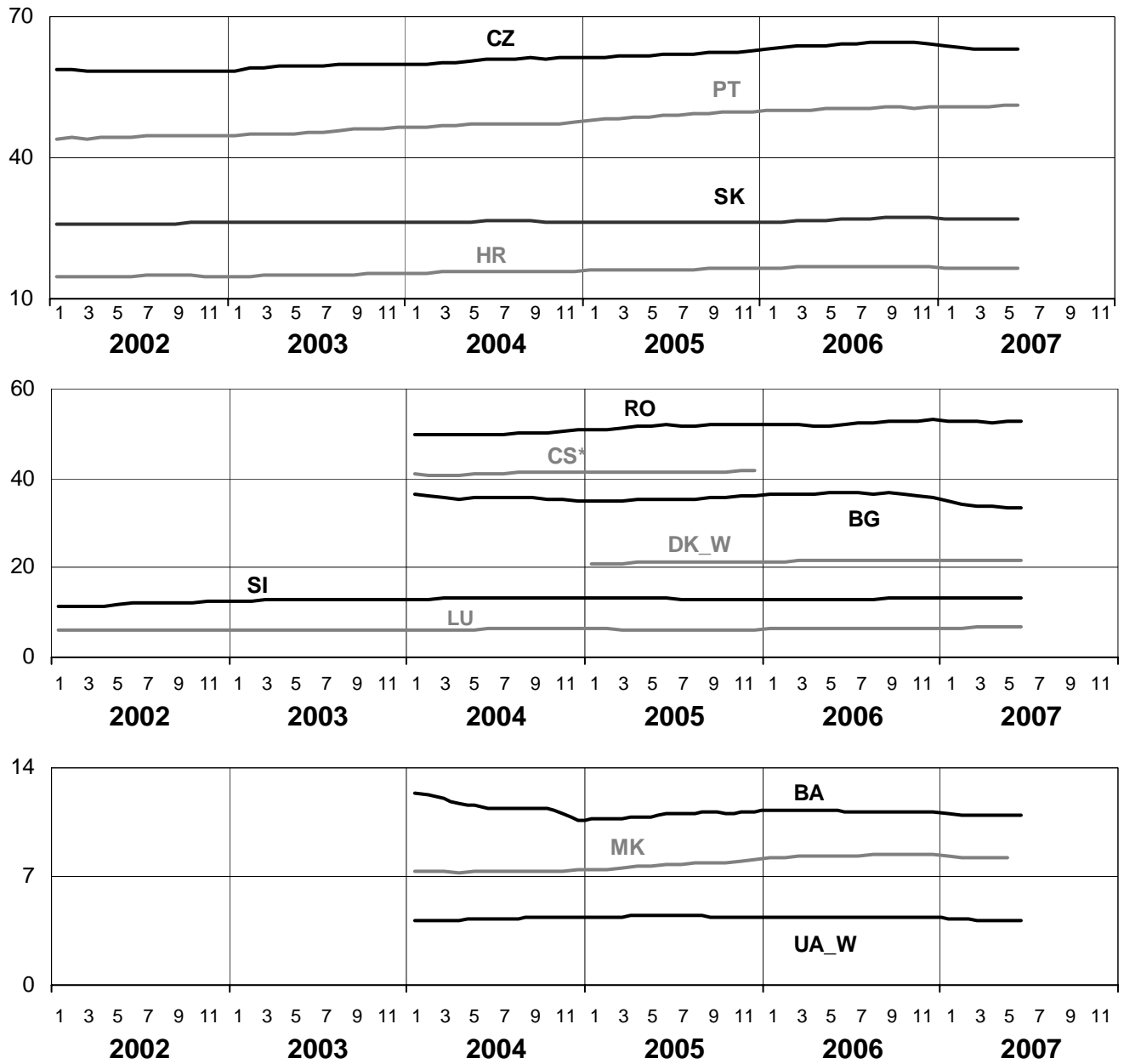
June 2007



5

Consumption of the last 12 months

June 2007

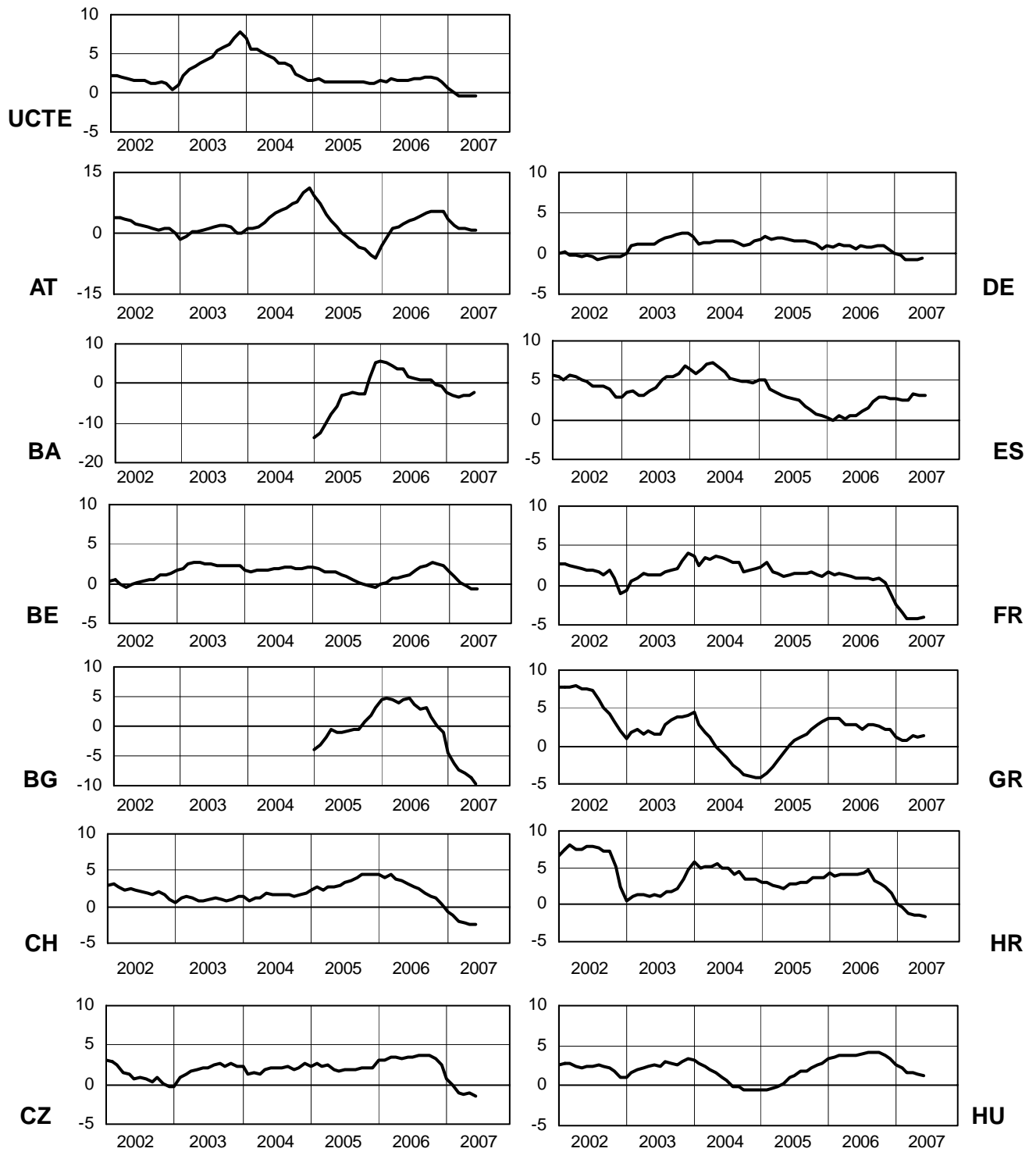


* CS consumption values until December 2006; from 2007 on ME and RS as separate countries

6

Variation of the last 12 months' consumption in %

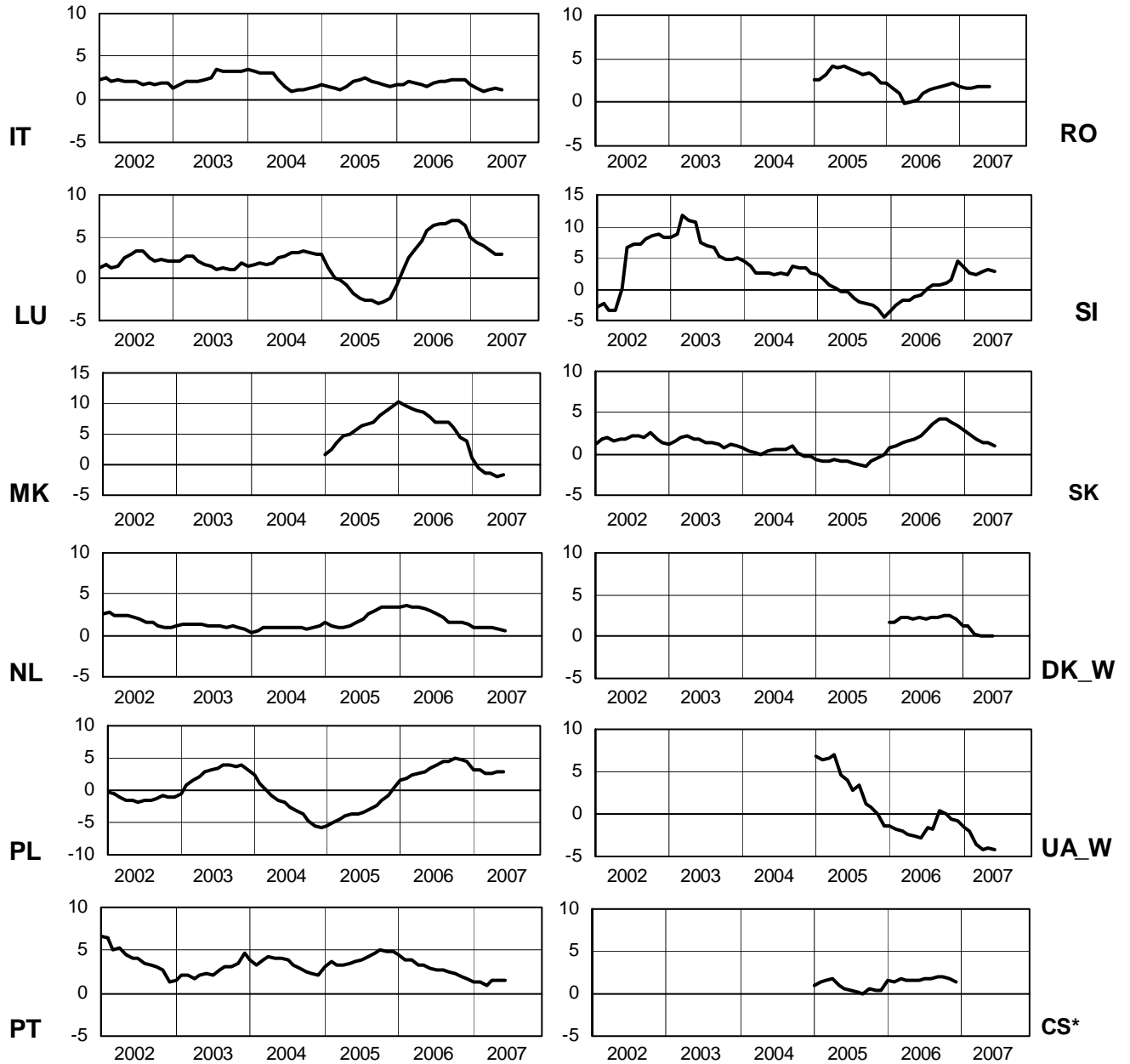
June 2007



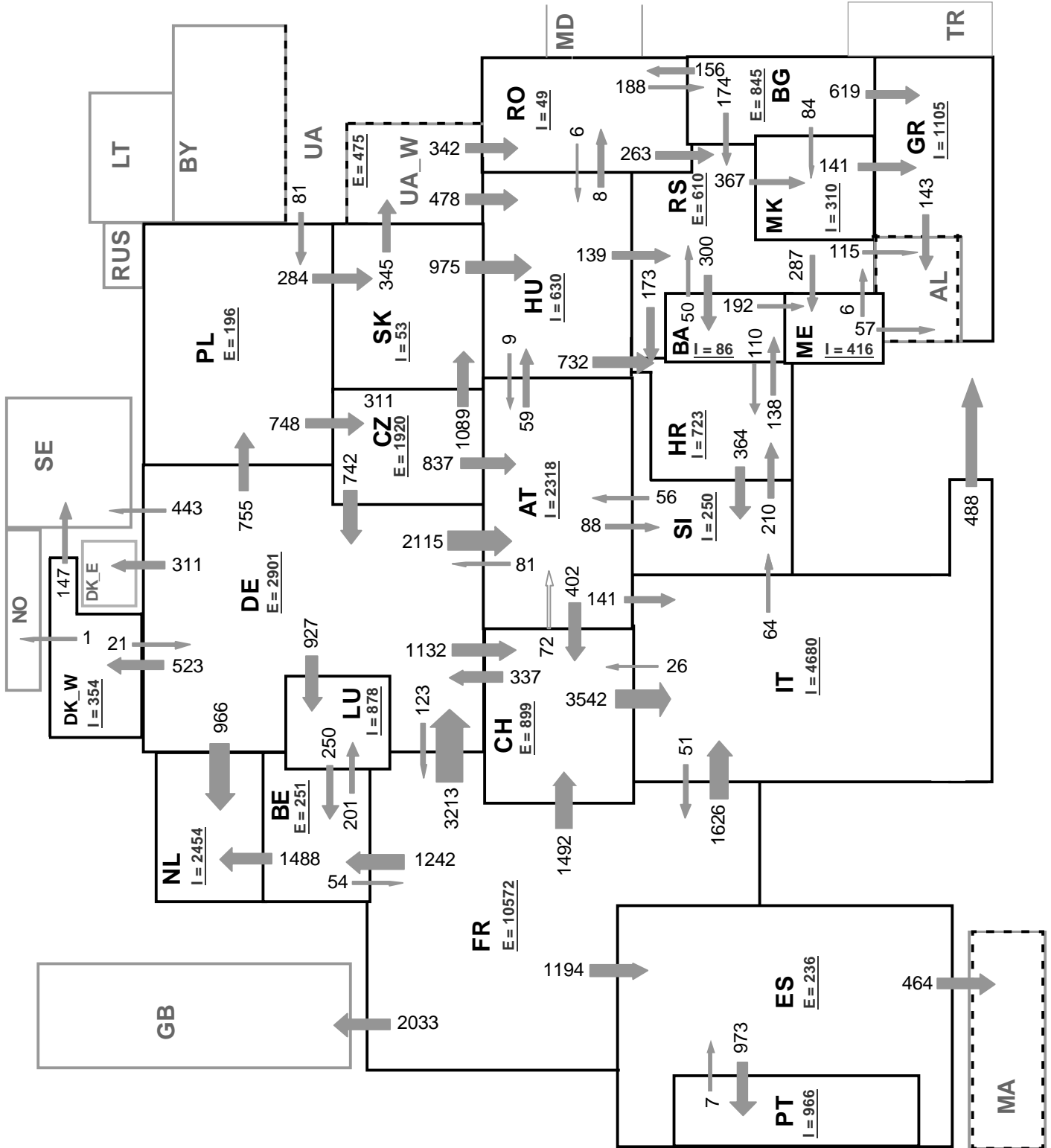
6

Variation of the last 12 months' consumption in %

June 2007



* CS consumption values until December 2006; from 2007 on ME and RS as separate countries



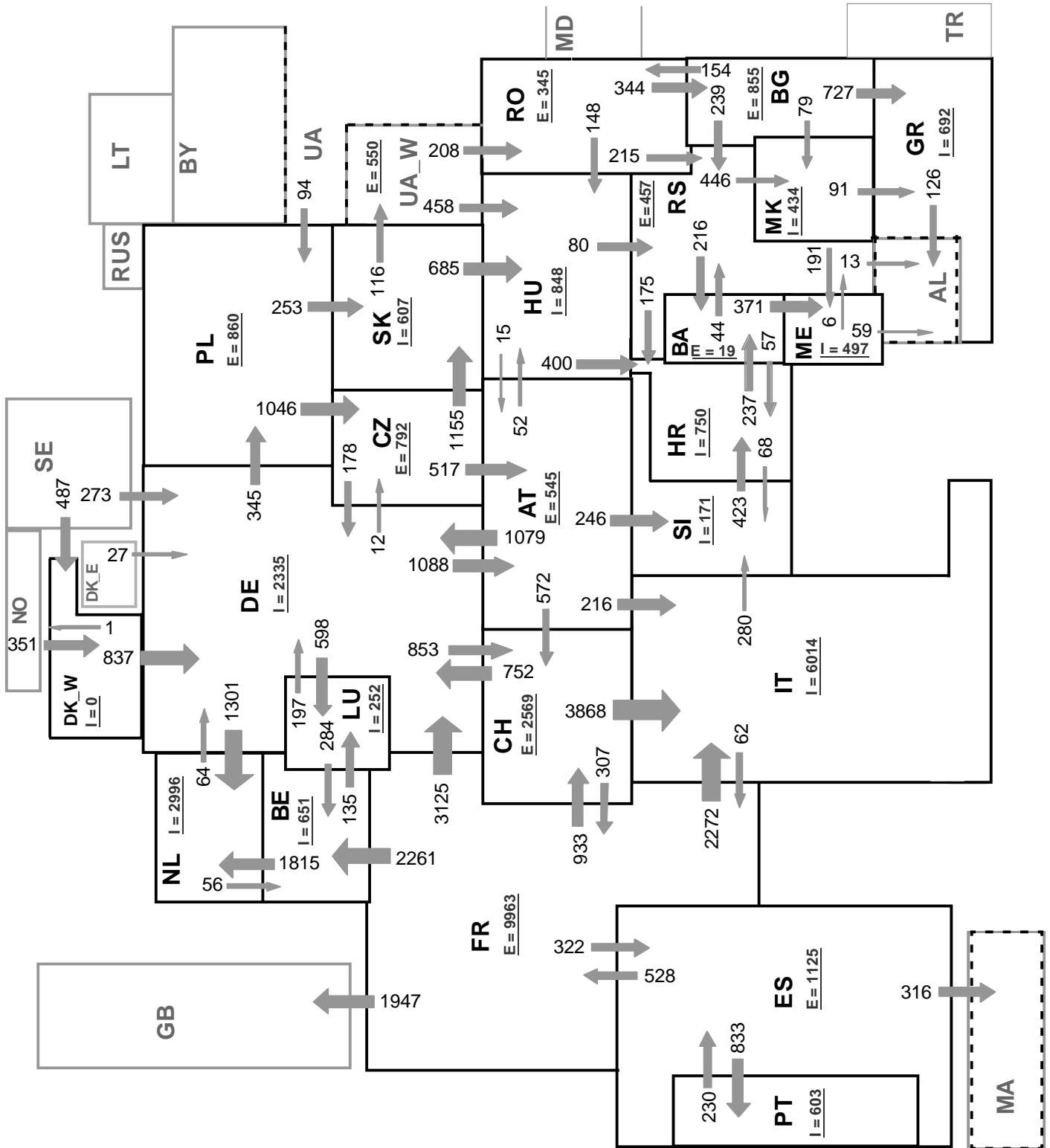
Sum of load flows in MW

UCTE = 33100 MW

Total = 38060 MW

Synchronous operation with UCTE region

I = Import balance
E = Export balance



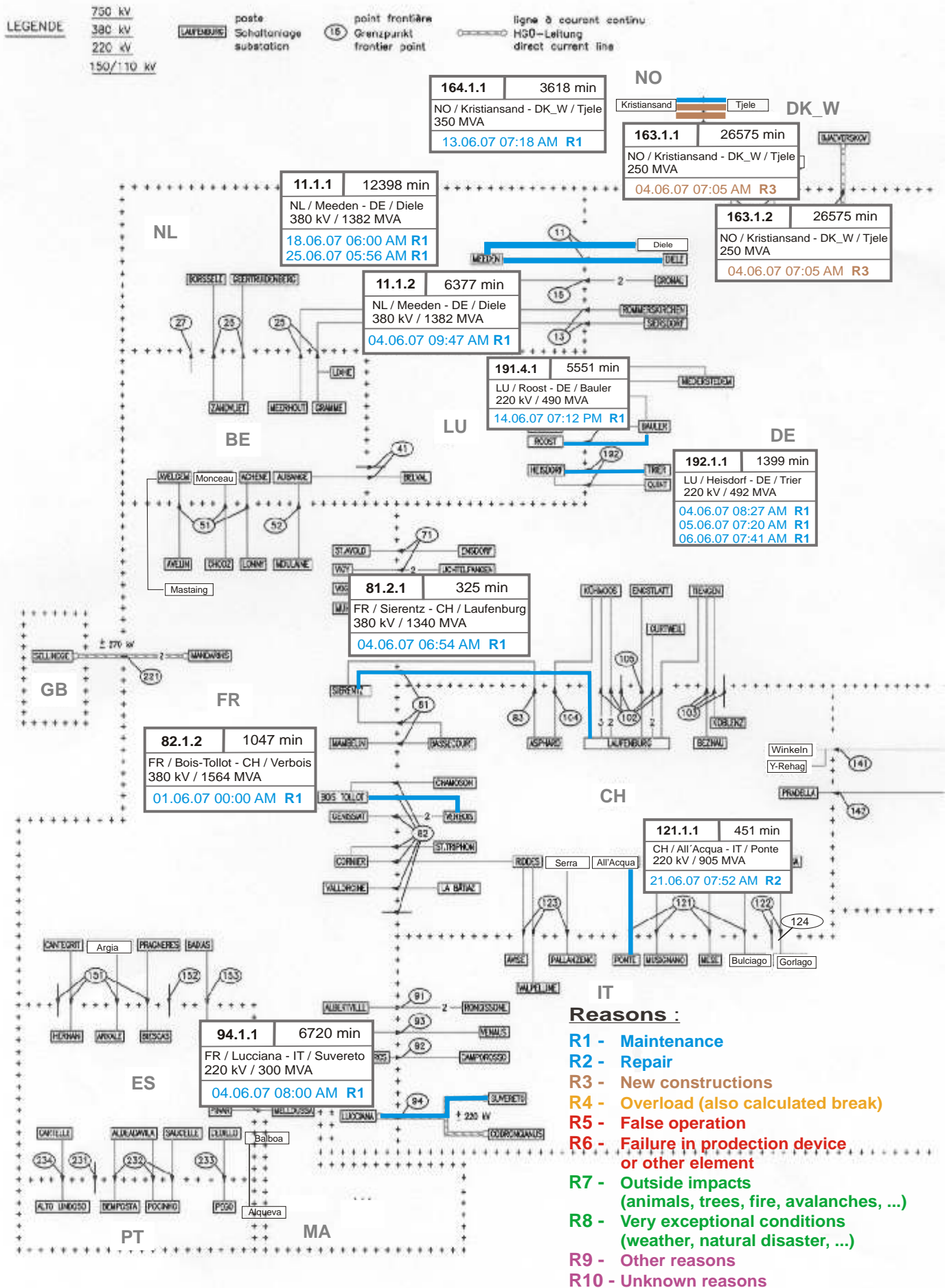
Sum of load flows in MW

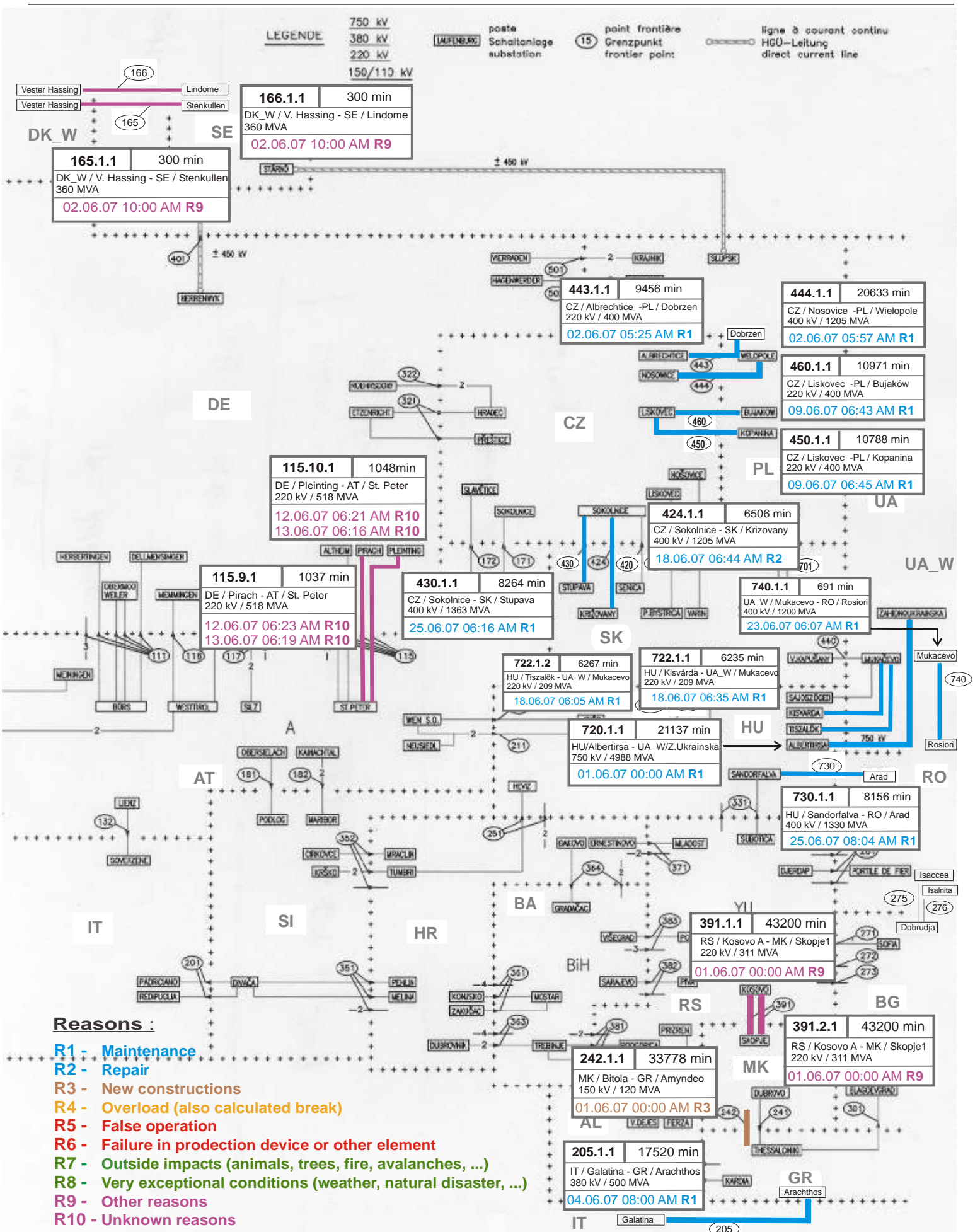
UCTE = 34083 MW

Total = 38559 MW

Synchronous operation with UCTE region

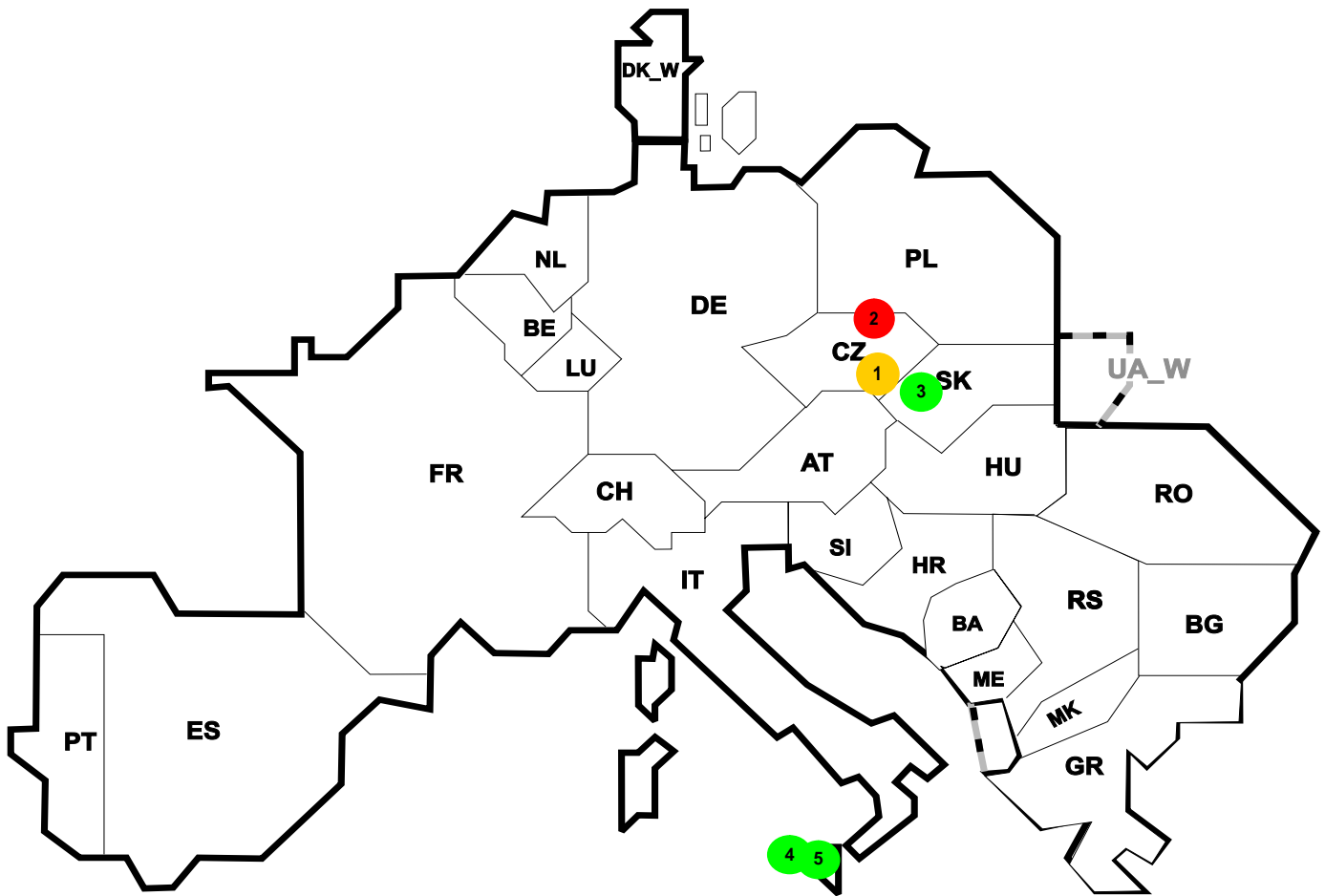
I = Import balance
E = Export balance





Reasons :

- R1 - Maintenance
- R2 - Repair
- R3 - New constructions
- R4 - Overload (also calculated break)
- R5 - False operation
- R6 - Failure in production device or other element
- R7 - Outside impacts (animals, trees, fire, avalanches, ...)
- R8 - Very exceptional conditions (weather, natural disaster, ...)
- R9 - Other reasons
- R10 - Unknown reasons



Reasons:

- R4 Overload (also calculated break)
- R5 False operation
- R6 Failure in protection device or other element
- R7 Outside impacts (animals, trees, fire, avalanches, ...)
(animals, trees, fire, avalanches, ...)
- R8 Very exceptional conditions
(weather, natural disaster, ...)
- R9 Other reasons
- R10 Unknown reasons

No	Country	Substation	Reason	Energy not supplied [MWh]	Total loss of power [MW]	Restoration time [min]	Equivalent time of interruption ¹
1	CZ	Tynec	R4	240	32	8	1,996
2	CZ	Krasikov	R6	130	217	10	1,081
3	SK	Sucany	R7	40	84	29	0,786
4	IT	Partinico	R7	385	360	65	0,599
5	IT	Caracoli	R7	359	230	96	0,559

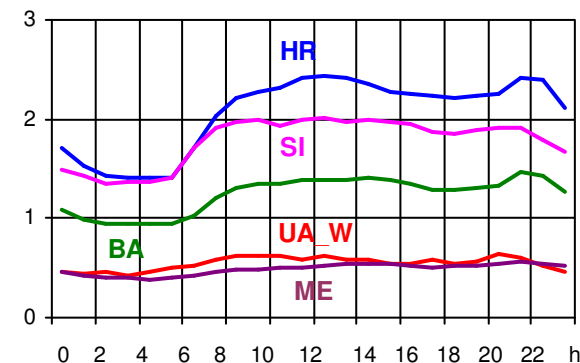
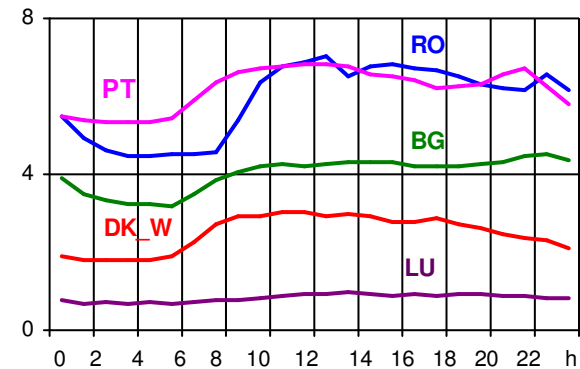
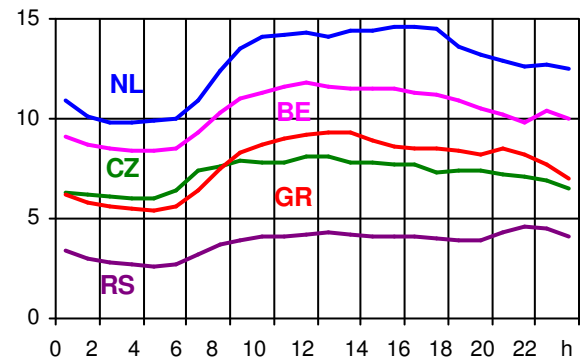
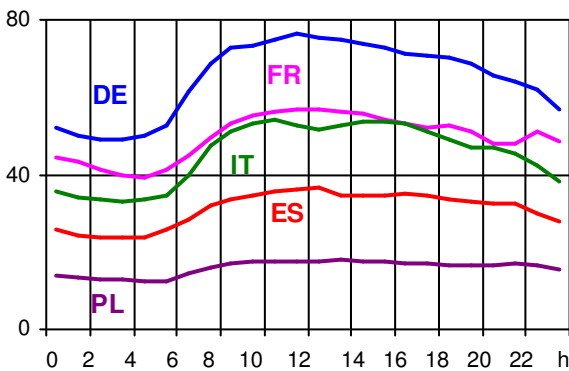
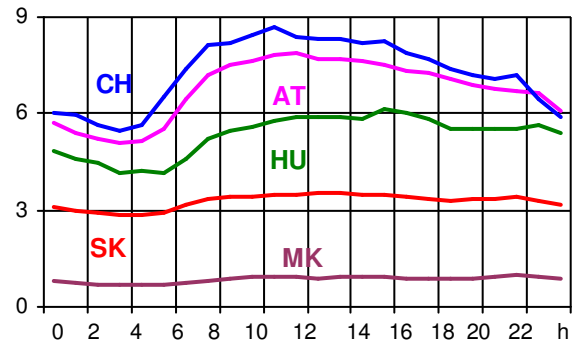
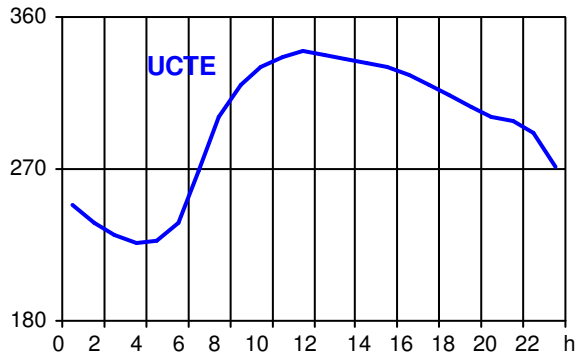
¹ (year [in min] * energy not supplied) / consumption last 12 months

Control area	Export Programs	Import Programs	Export Programs at 03:00	Import Programs at 03:00	Export Programs at 11:00	Import Programs at 11:00
AT	689439	812803	986	865	887	1171
BA	216173	261849	157	230	243	230
BE	754511	976764	1214	886	1219	1696
BG	n.a.	n.a.	n.a.	n.a.	n.a.	n.a.
CH	3246941	1928380	3801	2924	5356	2781
CZ	1752369	752535	2776	797	2356	1532
DE	2646624	2460487	3743	3842	3315	4103
ES	1200758	975731	1788	1475	2484	1305
FR	7473003	852228	10795	173	11318	1389
GR	3662	564781	0	1090	0	675
HR	133676	625817	160	882	140	882
HU	708813	1220986	1026	1655	984	1831
IT	267641	4075422	629	5309	342	6356
ME	56782	373254	100	526	65	547
MK	26500	322200	0	322	45	463
NL	118044	2096733	405	2837	25	3041
PL	351127	275402	217	165	800	90
PT	252564	761739	275	1274	555	1179
RO	249592	121129	259	302	496	145
RS	679063	321919	945	344	1006	562
SI	405104	527290	483	773	655	808
SK	757751	862714	1320	1299	800	1298
DK_W	605248	381634	502	149	874	800
UA_W	320243	9196	475	0	549	0

- Control areas can differ from national borders (i.e. German block which includes parts of AT, LU and DK).
- Values are calculated on an hourly base (MWh).
- This values are not the provisional values entered in the VULCANUS system, but the definitive values after an eventual correction during the actual date.
- Export Programs: Sum of all positive values of every hour of every border
- Import Programs: Sum of all negative values of every hour of every border
- Export Programs at 03:00: Sum of all positive values the third Wednesday from 02:00 to 03:00 a.m.
- Import Programs at 03:00: Sum of all negative values the third Wednesday from 02:00 to 03:00 a.m.
- Export Programs at 11:00: Sum of all positive values the third Wednesday from 10:00 to 11:00 a.m.
- Import Programs at 11:00: Sum of all negative values the third Wednesday from 10:00 to 11:00 a.m.

Consumption hourly load curves on 20.06.2007 CET

Values in GW



	Highest load MW	var.% ¹	Load representativity %
AT	7908	-0,4	100
BA	1464	0,6	100
BE ²	11842	1,9	100
BG	4495	5,4	100
CH	8694	1,4	100
CZ	8091	4,6	100
DE	76267	2,8	91
ES	36401	-3,3	98
FR	56758	-1,0	100
GR	9342	8,8	100
HR	2446	5,5	100
HU	6116	5,1	100
IT	53964	2,0	100
LU	949	5,9	100
ME	564	-	100
MK	1008	8,7	100
NL	14624	-4,5	100
PL	17829	3,8	100
PT	7008	-0,3	97
RO	6846	6,9	100
RS	4650	-	100
SI	2022	1,7	95
SK	3546	3,1	100
DK_W	3024	-1,6	100
UCTE³	342369	1,2	
UA_W	635	-2,5	100

¹ Variation as compared to corresponding month of the previous year

² The reported figures are best estimates based on actual measurements and extrapolations.

³ From June 2007 on including DK_W



Contact

Boulevard Saint-Michel, 15
B-1040 Brussels – Belgium
Tel +32 2 741 69 40 – Fax +32 2 741 69 49

info@ucte.org
www.ucte.org