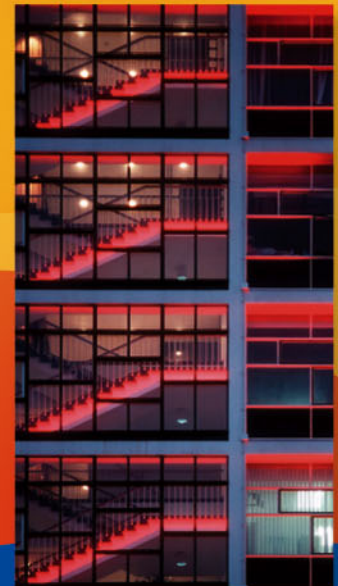
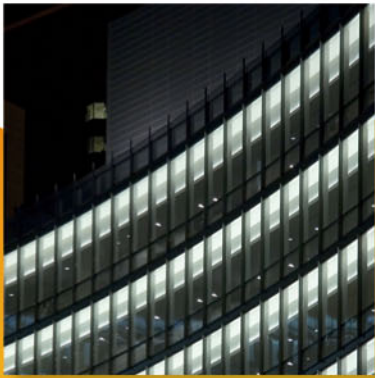


UCTE



June 2006

Monthly provisional values
union for the co-ordination of transmission of electricity

Table of contents		Page
1	Electricity supply situation of the countries	2
2	Physical energy flows	3
3	Monthly consumption	4
4	Monthly consumption variation	6
5	Consumption of the last 12 months	8
6	Variation of the last 12 months' consumption	10
7	Load flows (night)	12
8	Load flows (day)	13
9	Unavailability of international tie lines (major events)	14
10	Network reliability (major events)	16
11	Scheduled exchanges	17
12	Load on the 3 rd Wednesday	18

General remarks and abbreviations used in the tables

- All values of production and consumption in chapter 1, 3&4, 5&6 and 12 are calculated to represent 100% of the national values.
- DK_W Denmark West represents the Western part of Denmark synchronously interconnected with UCTE (Jutland and Funen).
- UA_W Ukraine West represents the so-called Burshtyn Island synchronously interconnected with UCTE.
- CET Central European Time
- The Bulgarian values of production and consumption are gross values.

Countries	Net production in GWh							Exchange balance in GWh	Pump in GWh	Consumption in GWh			
	Therm. nuclear	Therm. conv.	Hydro prod	Other renew.	Of which wind	Not identify	Total			monthly	var. [%]	last 12 months	var. [%]
AT	0	964	4092	0	0	701	5757 ¹	-257	346	5154	3,2	65897	2,9
BA	0	530	366	0	0	0	896	-59	0	837	-7,9	11176	1,6
BE ²	3667	2407	133	172	13	0	6379 ¹	711	140	6950	2,6	89062	1,5
BG	1266	1589	486	0	0	0	3341	-693	18	2630	5,5	36899	4,7
CH	1559	172	3487	80	0	0	5298 ¹	-163	343	4792	0,2	63649	3,2
CS	0	1861	1217	0	0	0	3078 ¹	-78	53	2947	6,7	42249	2,2
CZ	1882	3728	263	9	2	0	5882 ¹	-1125	34	4723	4,5	64078	3,5
DE	12639	26510	2255	2133	1130	0	43537 ¹	-429	613	42495	-2,5	557258	0,2
ES	4861	13462	1731	1961	1329	0	22015 ¹	-263	391	21361	1,5	255286	4,8
FR	32834	2033	5108	436	102	0	40411	-5927	526	33958	-1,8	484418	0,8
GR	0	3657	419	81	73	0	4157 ¹	455	39	4573	4,4	53619	2,8
HR	0	296	470	1	1	0	767 ¹	534	7	1294	6,9	16870	4,1
HU ³	941	1644	0	0	0	0	2585 ¹	669	0	3254	5,6	40117	3,8
IT	0	20011	4138	622	201	0	24771 ¹	4144	680	28235	1,4	332366	1,1
LU	0	268	78	7	3	0	353	267	100	520	7,9	6530	5,6
MK	0	286	142	0	0	0	428 ¹	132	0	560	1,3	8333	7,9
NL	207	6312	10	713	110	0	7242 ¹	2140	0	9382	3,5	115880	3,0
PL	0	10761	236	15	9	0	11012 ¹	-779	53	10180	6,1	134073	3,4
PT	0	2623	487	315	163	0	3425 ¹	672	66	4031	0,1	50566	3,3
RO	471	1817	2018	0	0	0	4306 ¹	-244	22	4040	4,5	51954	0,2
SI	493	393	354	0	0	0	1240	-147	0	1093	3,9	12995	-1,0
SK	1282	271	559	1	0	207	2320 ¹	-239	11	2070	7,0	26800	2,1
UCTE	62102	101595	28049	6546	3136	908	199200¹	-679	3442	195078	0,8	2520067	1,8
DK_W	0	1477	1	388	264	0	1866 ¹	-200	0	1666	0,5	21623	2,2
UA_W	0	630	18	0	0	0	648 ¹	-346	0	302	0,7	4332	-2,8

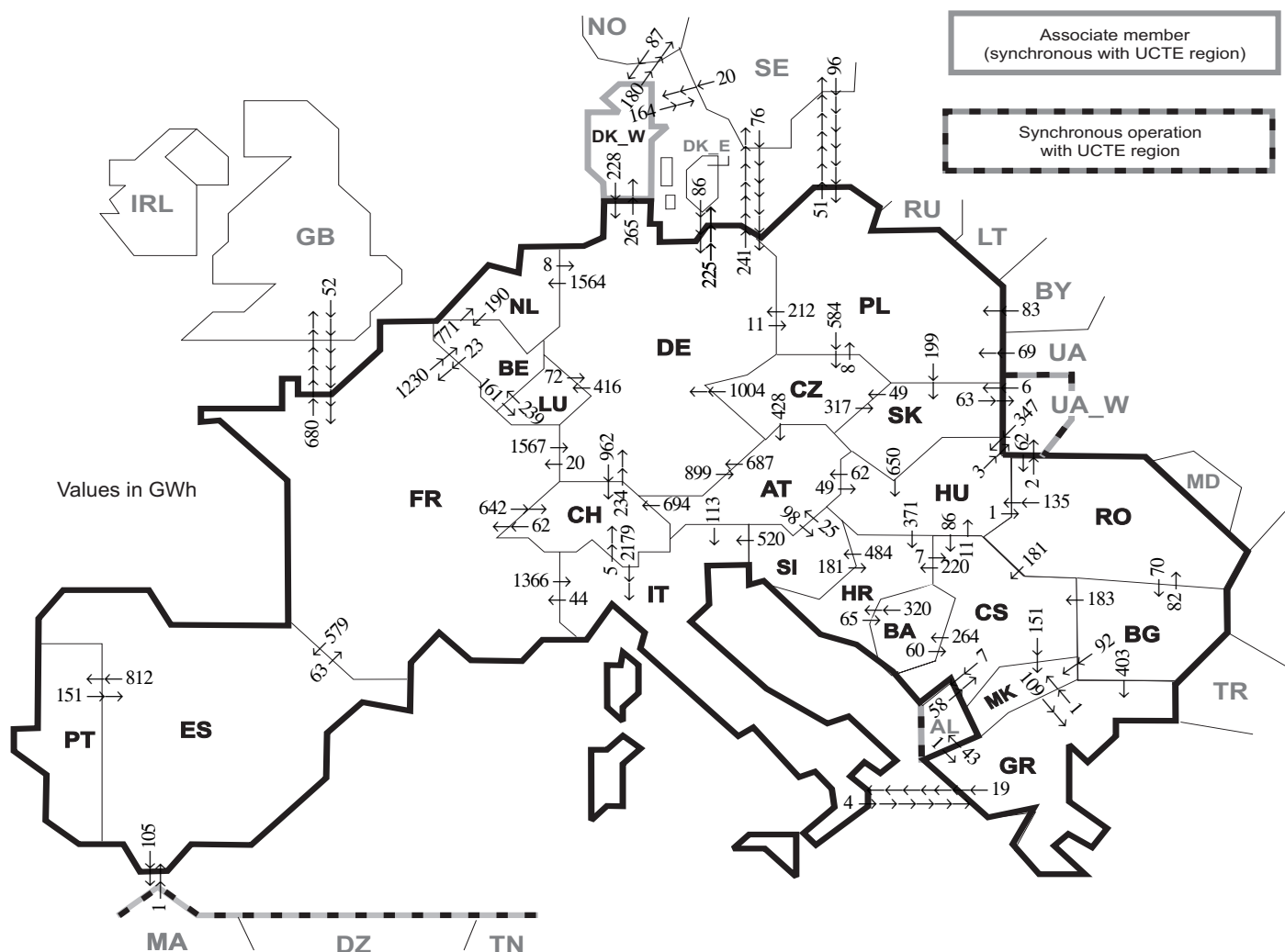
¹ Including deliveries from industry

² The reported figures are best estimates based on actual measurements and extrapolations.

³ Data on hydro, other renewable, not clearly identifiable production are not yet available.

All representativities of the national production and consumption values used to calculate values at a representativity of 100% as stated in the table above

Countries	AT	BA	BE	BG	CH	CS	CZ	DE	ES	FR	GR	HR	HU	IT	LU	MK	NL	PL	PT	RO	SI	SK	DK_W	UA_W
Production																								
Therm.nuclear	100	100	100	100	100	100	100	100	100	100	100	100	100	100	100	100	100	100	100	100	100	100	100	100
Thermal conv.	100	100	100	100	100	100	100	100	97	100	100	100	100	100	100	100	100	100	94	100	100	100	100	100
Hydro prod	100	100	100	100	100	100	100	100	100	100	100	100	100	100	100	100	100	100	100	100	100	100	100	100
Other renew.	100	100	100	100	100	100	100	100	95	100	100	100	100	100	100	100	100	100	100	100	100	100	100	100
Not identify	100	100	100	100	100	100	100	100	100	100	100	100	100	100	100	100	100	100	100	100	100	100	100	100
Consumption	100	100	100	100	100	100	100	100	98	100	100	100	100	100	100	100	100	100	96	100	95	100	100	100



Exporting countries	Importing countries																				Sum export						
	AT	BA	BE	BG	CH	CS	CZ	DE	ES	FR	GR	HR	HU	IT	LU	MK	NL	PL	PT	RO		SI	SK	DK_W	UA_W	Other III ¹	
AT	-	-	-	-	694	-	0	687	-	-	-	49	113	-	-	-	-	-	-	-	98	-	-	-	-	-	1641
BA	-	-	-	-	-	60	-	-	-	-	-	320	-	-	-	-	-	-	-	-	-	-	-	-	-	-	380
BE	-	-	-	-	-	-	-	-	-	23	-	-	-	-	161	-	771	-	-	-	-	-	-	-	-	-	955
BG	-	-	-	-	-	183	-	-	-	-	403	-	-	-	-	92	-	-	-	82	-	-	-	-	-	0	760
CH	0	-	-	-	-	-	-	234	-	62	-	-	2179	-	-	-	-	-	-	-	-	-	-	-	-	2475	
CS	-	264	-	0	-	-	-	-	-	-	-	220	11	-	151	-	-	-	-	0	-	-	-	-	-	7	653
CZ	428	-	-	-	-	-	-	1004	-	-	-	-	-	-	-	-	-	8	-	-	317	-	-	-	-	1757	
DE	899	-	-	-	962	-	0	-	-	20	-	-	-	416	-	1564	11	-	-	-	-	-	265	-	466	4603	
ES	-	-	-	-	-	-	-	-	63	-	-	-	-	-	-	-	-	-	812	-	-	-	-	-	105	980	
FR	-	-	1230	-	642	-	-	1567	579	-	-	-	1366	-	-	-	-	-	-	-	-	-	-	-	680	6064	
GR	-	-	-	0	-	-	-	-	-	-	-	-	19	-	1	-	-	-	-	-	-	-	-	-	-	43	63
HR	-	65	-	-	-	-	-	-	-	-	-	-	0	-	-	-	-	-	-	-	484	-	-	-	-	556	
HU	62	-	-	-	-	86	-	-	-	-	-	371	-	-	-	-	-	-	-	1	0	3	-	-	523		
IT	0	-	-	-	5	-	-	-	-	44	4	-	-	-	-	-	-	-	-	-	0	-	-	-	-	53	
LU	-	-	239	-	-	-	-	72	-	-	-	-	-	-	-	-	-	-	-	-	-	-	-	-	-	311	
MK	-	-	-	0	-	0	-	-	-	-	-	109	-	-	-	-	-	-	-	-	-	-	-	-	-	109	
NL	-	-	190	-	-	-	-	8	-	-	-	-	-	-	-	-	-	-	-	-	-	-	-	-	-	198	
PL	-	-	-	-	-	-	584	212	-	-	-	-	-	-	-	-	-	-	-	-	-	-	-	-	51	1046	
PT	-	-	-	-	-	-	-	-	151	-	-	-	-	-	-	-	-	-	-	-	-	-	-	-	-	151	
RO	-	-	-	70	-	181	-	-	-	-	-	-	135	-	-	-	-	-	-	-	-	-	-	2	0	388	
SI	25	-	-	-	-	-	-	-	-	-	-	181	520	-	-	-	-	-	-	-	-	-	-	-	-	726	
SK	-	-	-	-	-	49	-	-	-	-	-	650	-	-	-	-	0	-	-	-	-	-	-	63	-	762	
DK_W	-	-	-	-	-	-	-	228	-	-	-	-	-	-	-	-	-	-	-	-	-	-	-	-	344	572	
UA_W	-	-	-	-	-	-	-	-	-	-	-	-	347	-	-	-	-	-	-	-	62	6	-	-	-	415	
Other III ¹	-	-	-	0	-	58	162	1	52	1	-	-	-	-	-	-	-	248	-	0	-	107	-	-	-	629	
Sum imp	1414	329	1659	70	2303	575	633	4174	731	264	517	1092	1192	4197	577	244	2335	267	812	145	582	522	372	68	1696	26770	

Sum of physical energy flows between UCTE countries = 23469GWh

Total physical energy flows = 26770GWh

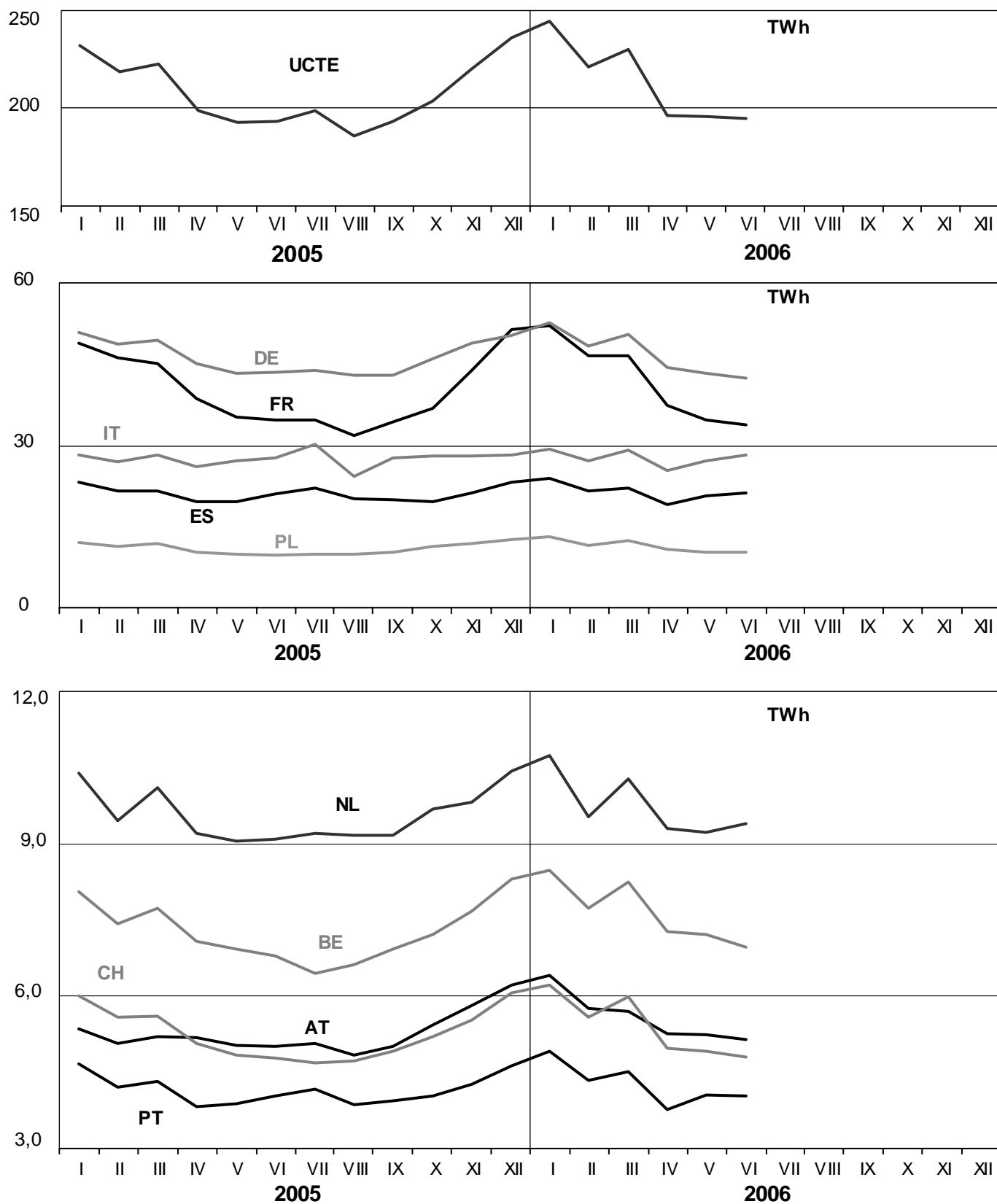
¹ Other III: Albania, Belarus, Denmark East, Great Britain, Morocco, Republic of Moldavia, Norway, Sweden, Republic of Turkey and Ukraina

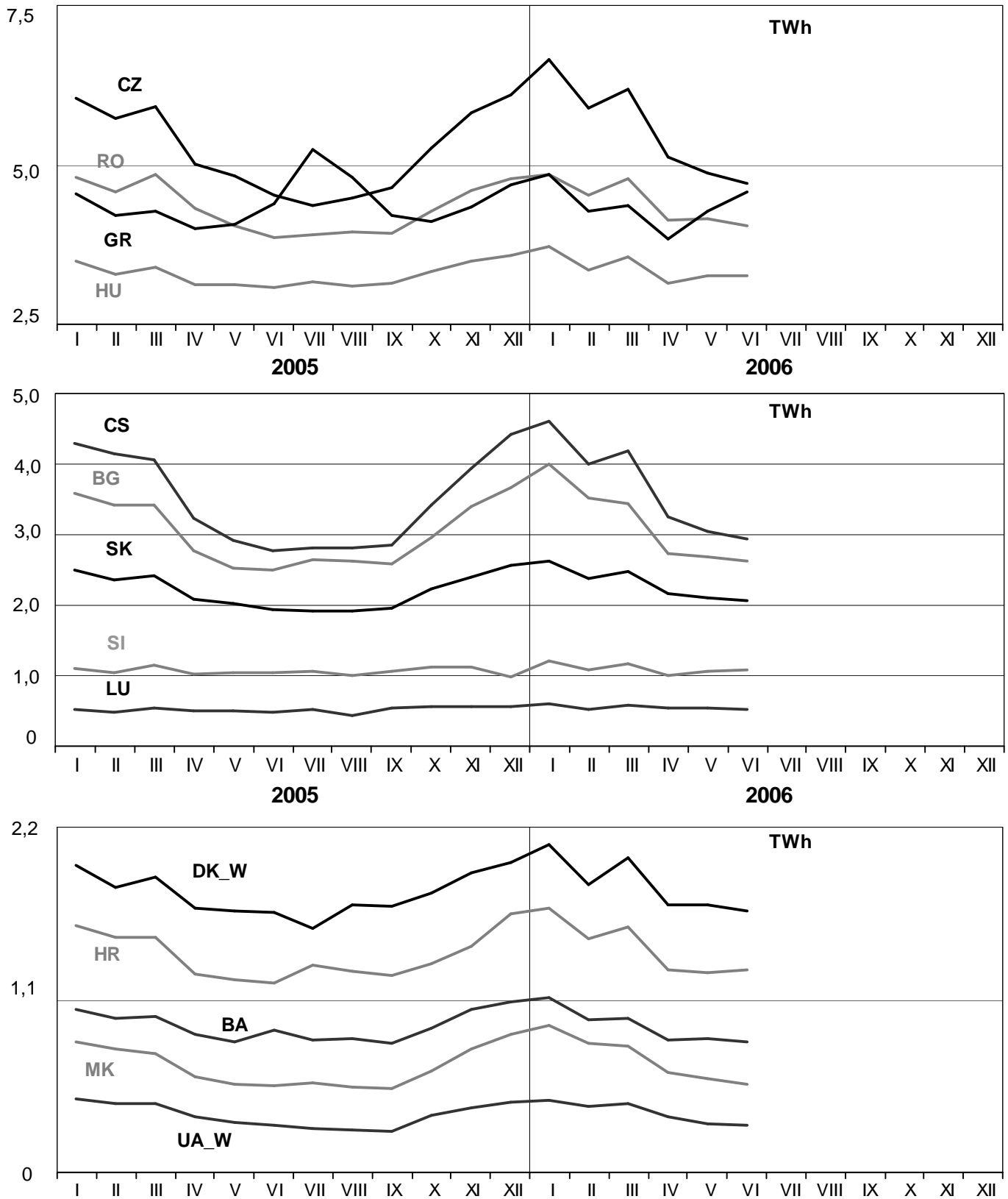
These physical energy flows were measured on the cross-frontier transmission lines (≤ 110 kV) listed in table 9 of the Statistical Yearbook. These values may differ from the official statistics and the exchange balances in chapter 1.

3

Monthly consumption

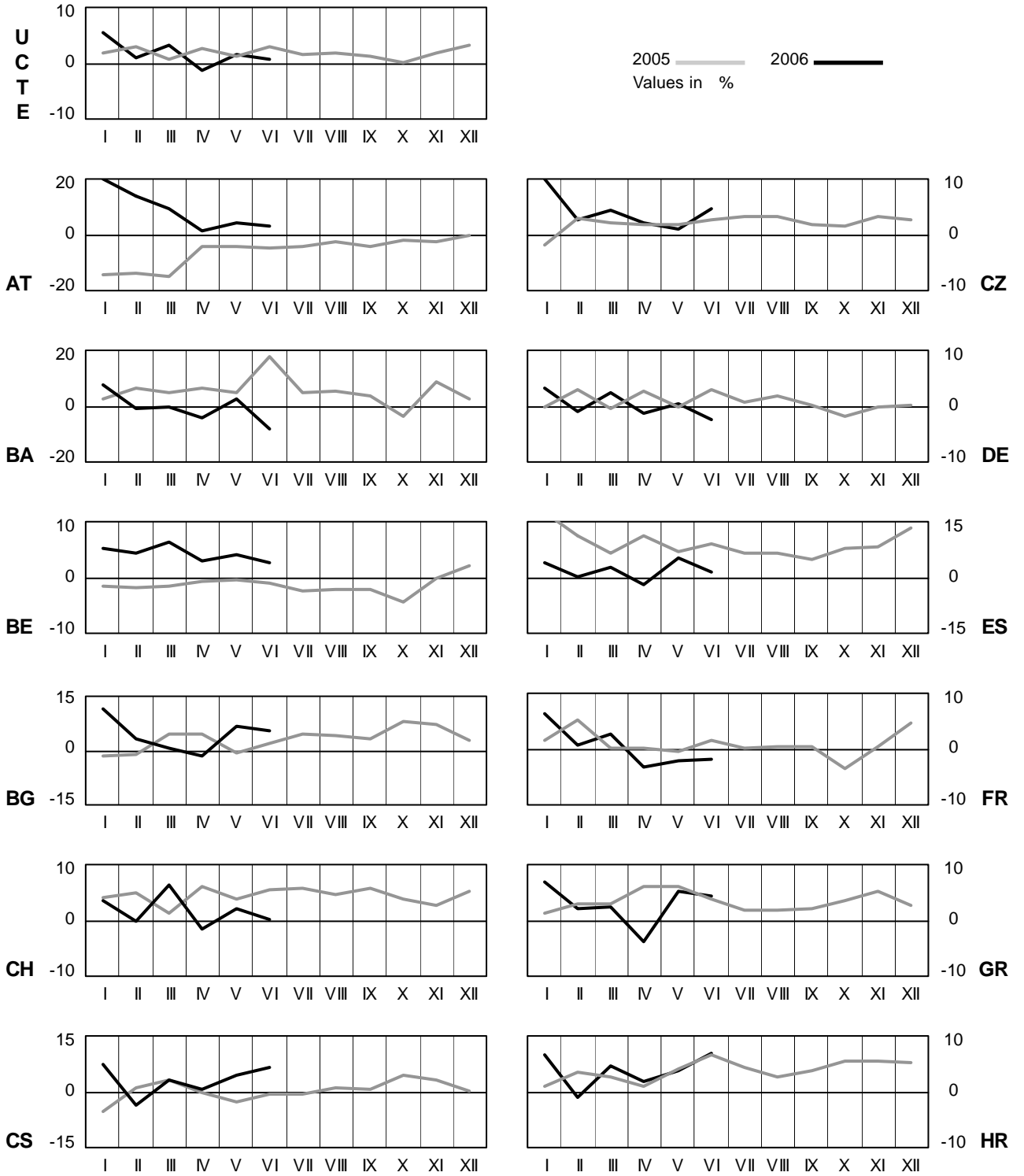
June 2006





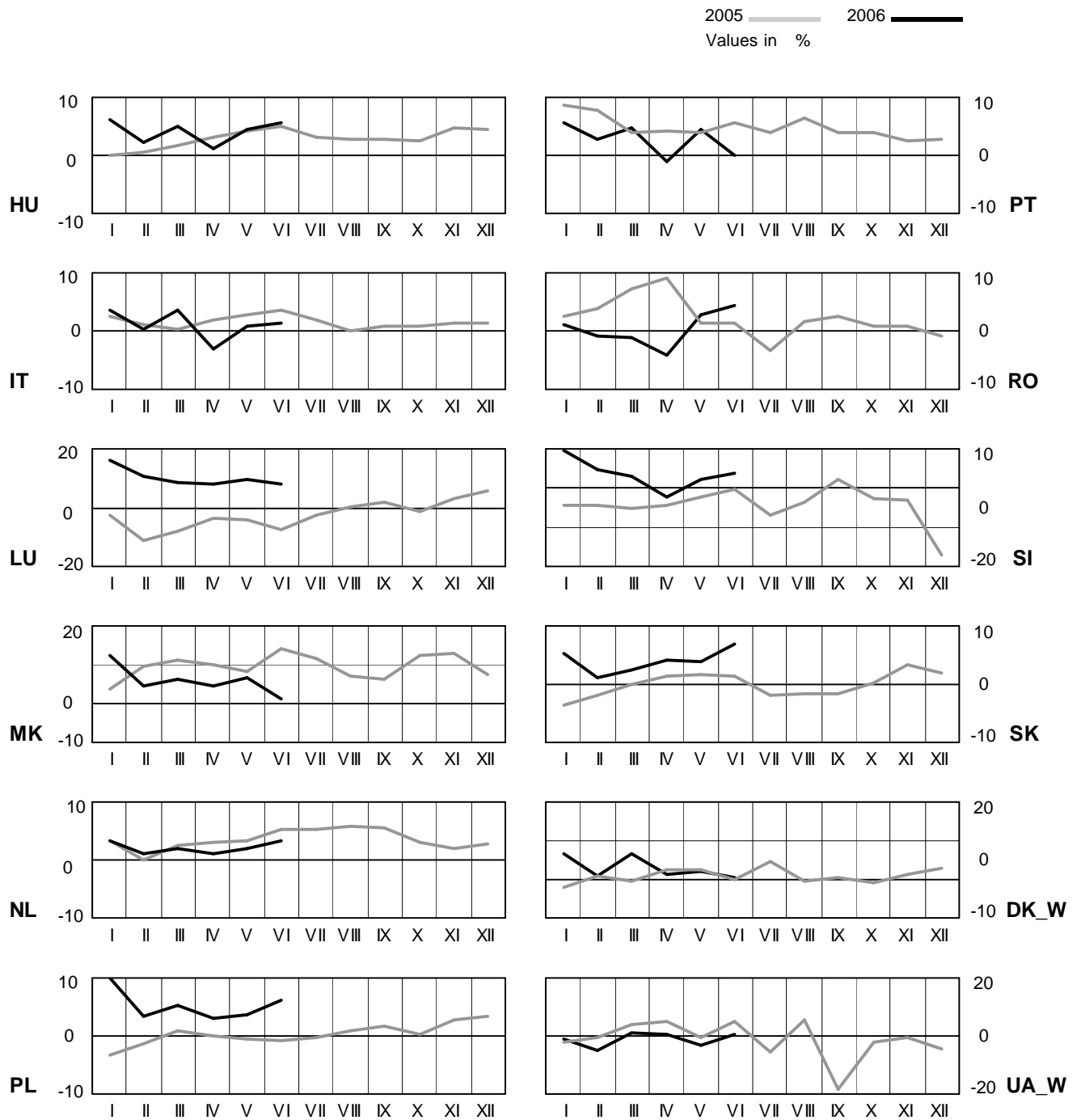
4 Monthly consumption variation

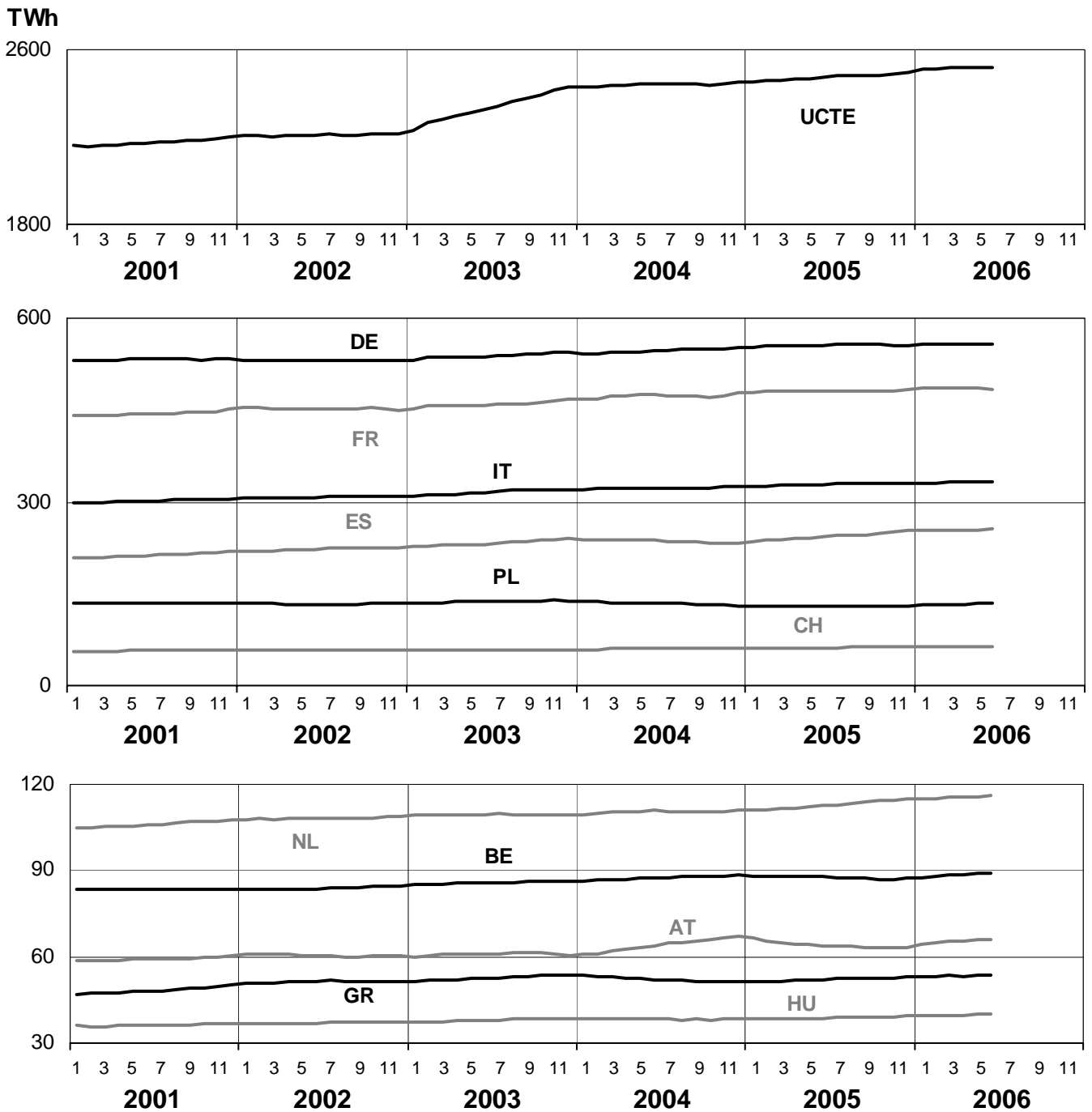
June 2006



4 Monthly consumption variation

June 2006



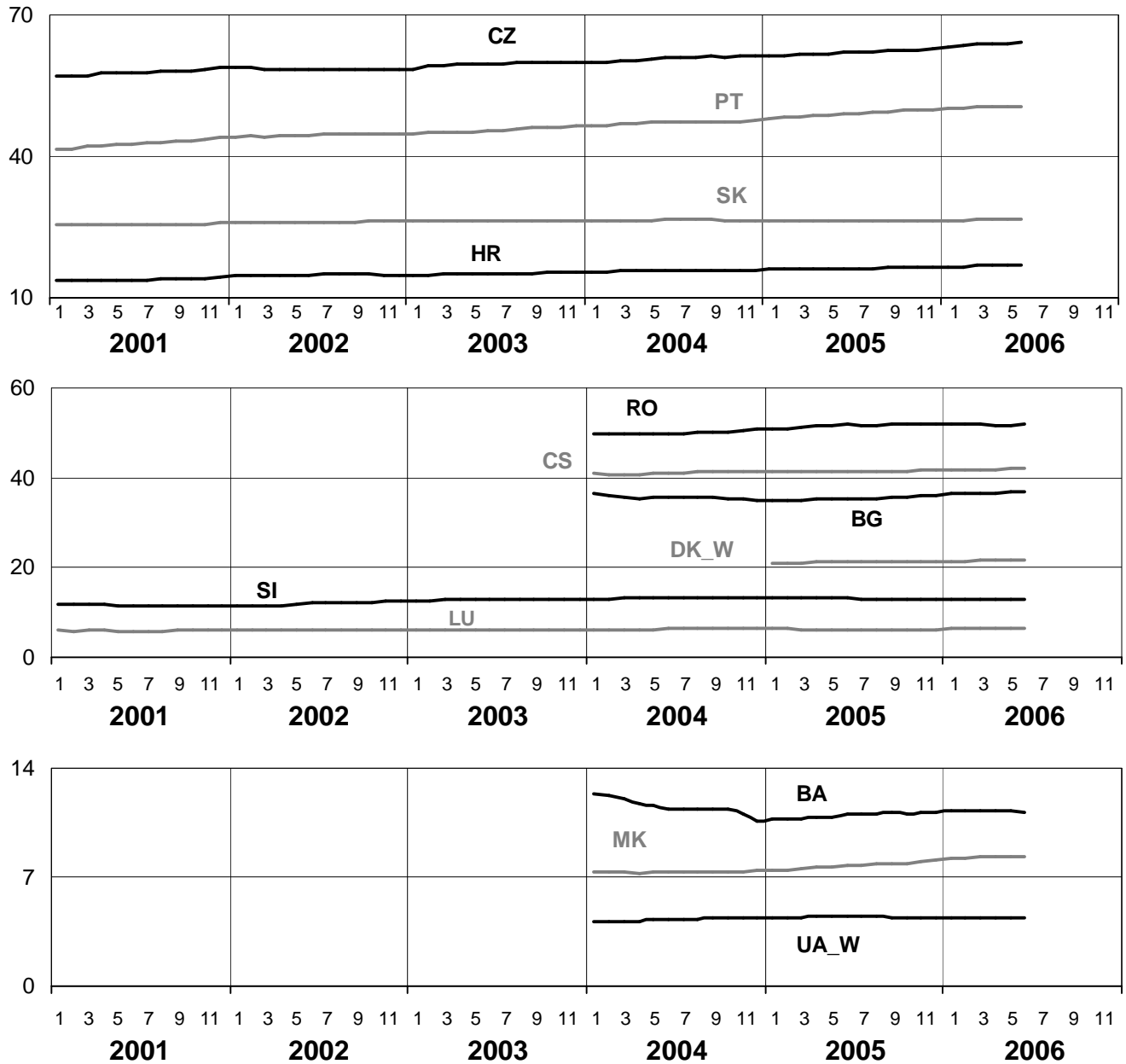


5

Consumption of the last 12 months

June 2006

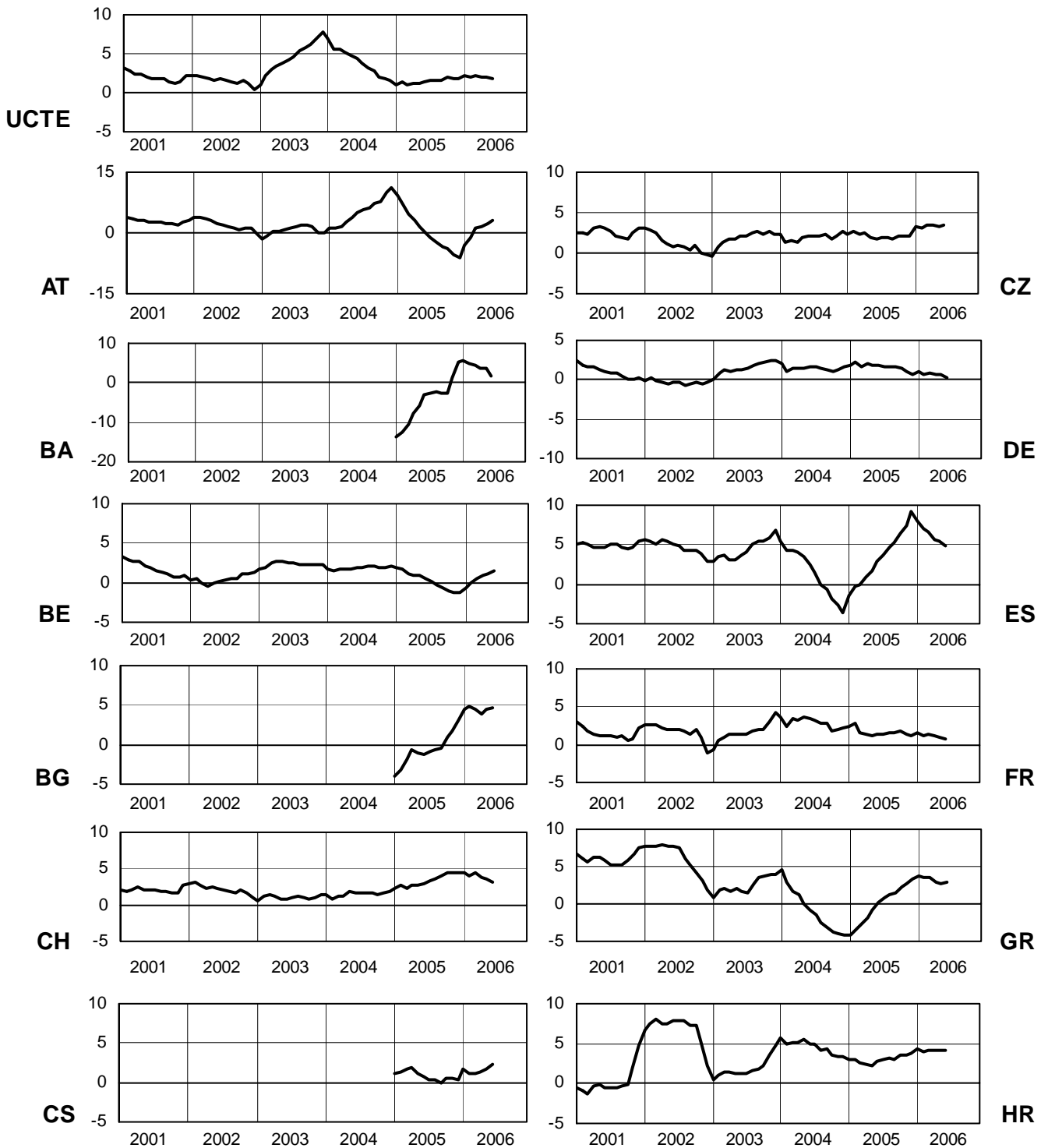
TWh



6

Variation of the last 12 months' consumption in %

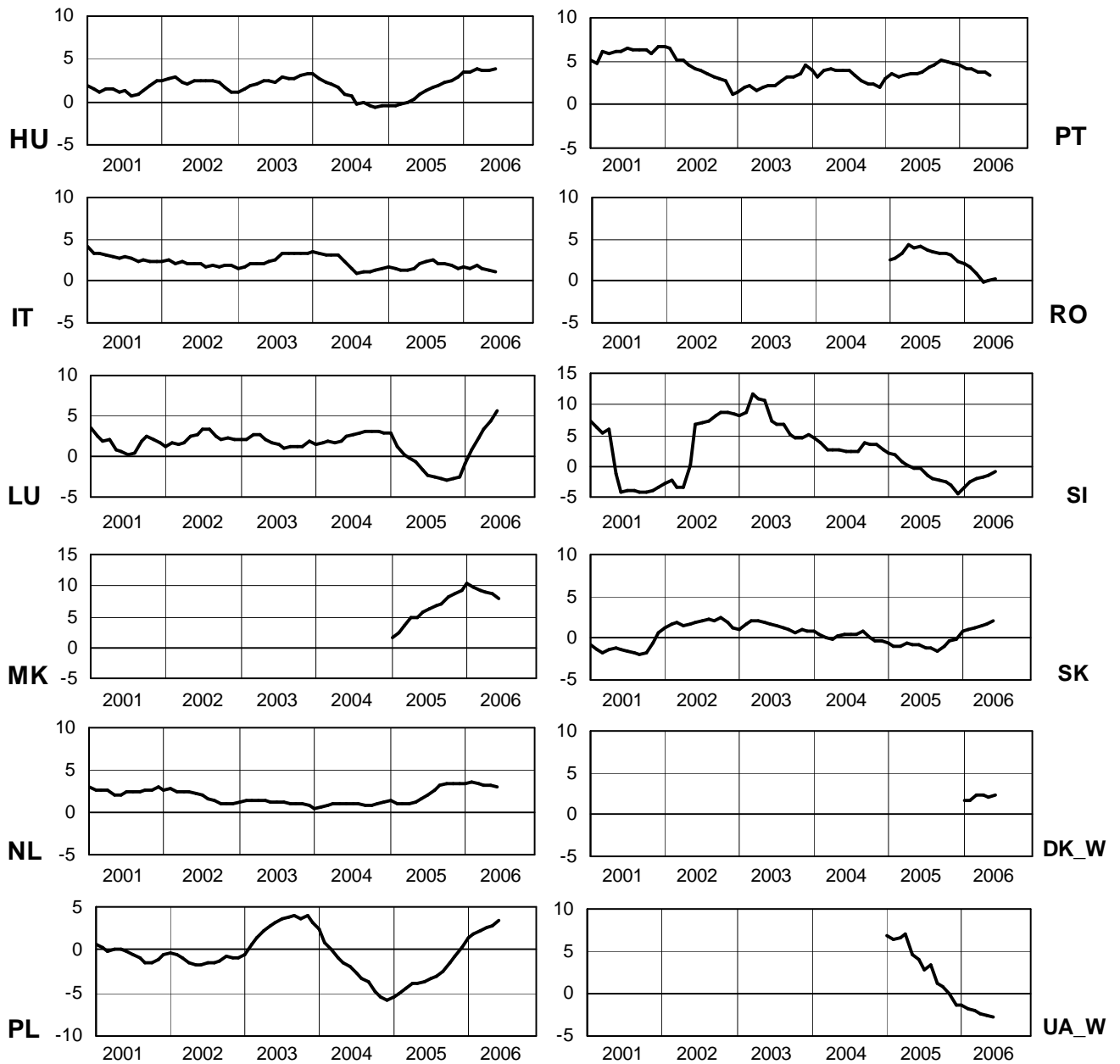
June 2006

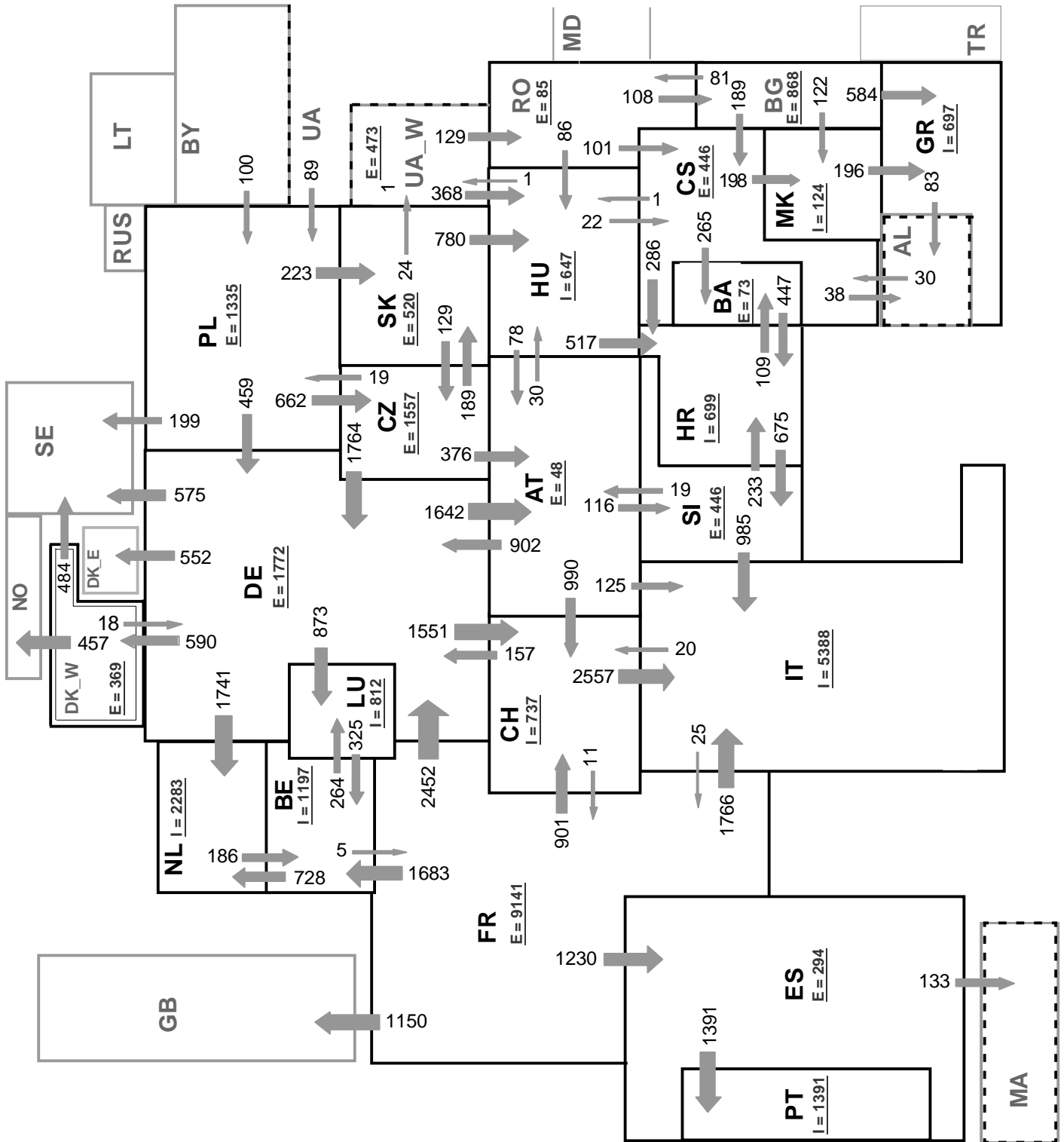


6

Variation of the last 12 months' consumption in %

June 2006





Associate member

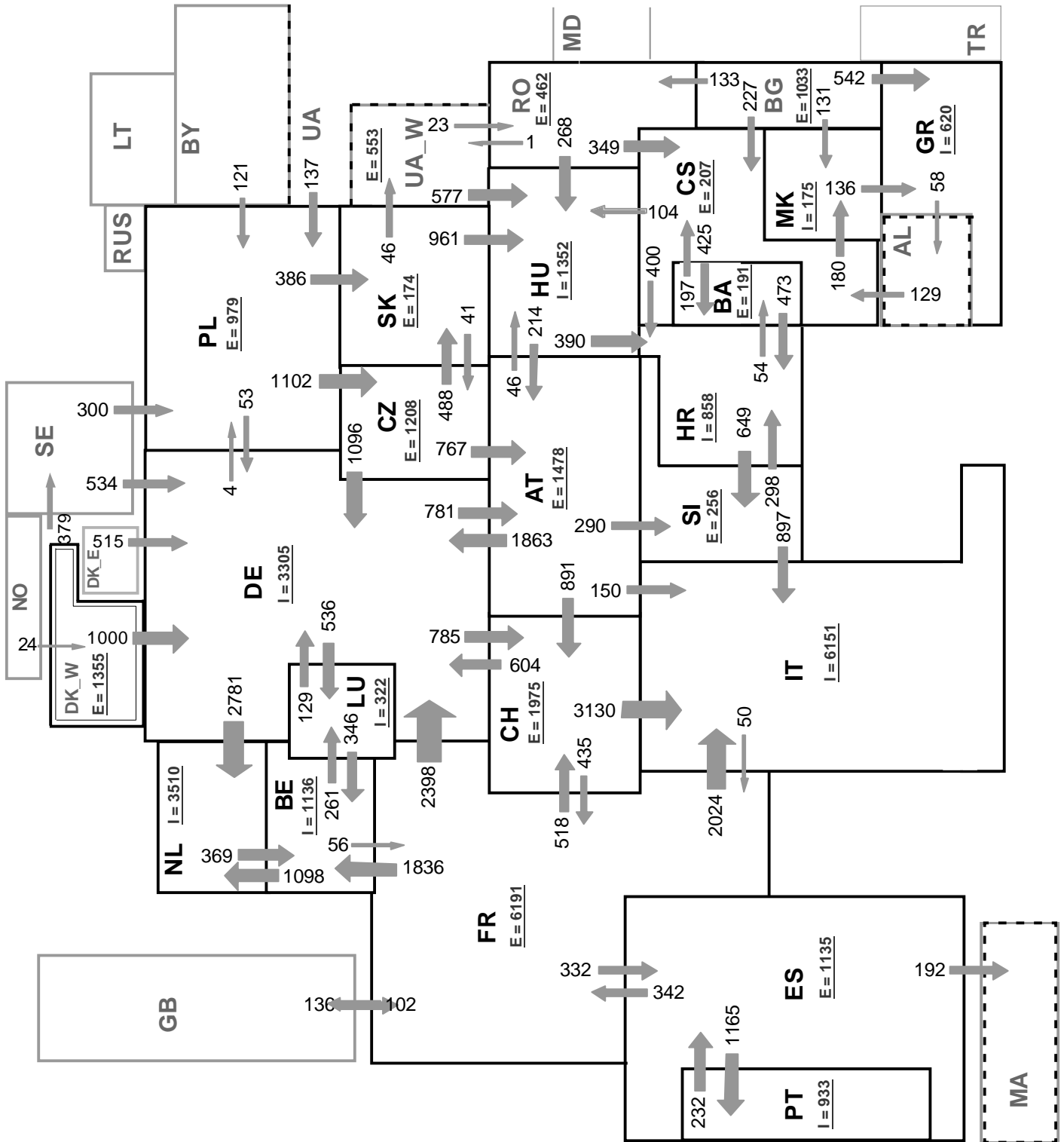
Synchronous operation with UCTE region

Sum of load flows in MW:

UCTE = 31574 MW

Total = 36595 MW

I = Import balance
E = Export balance



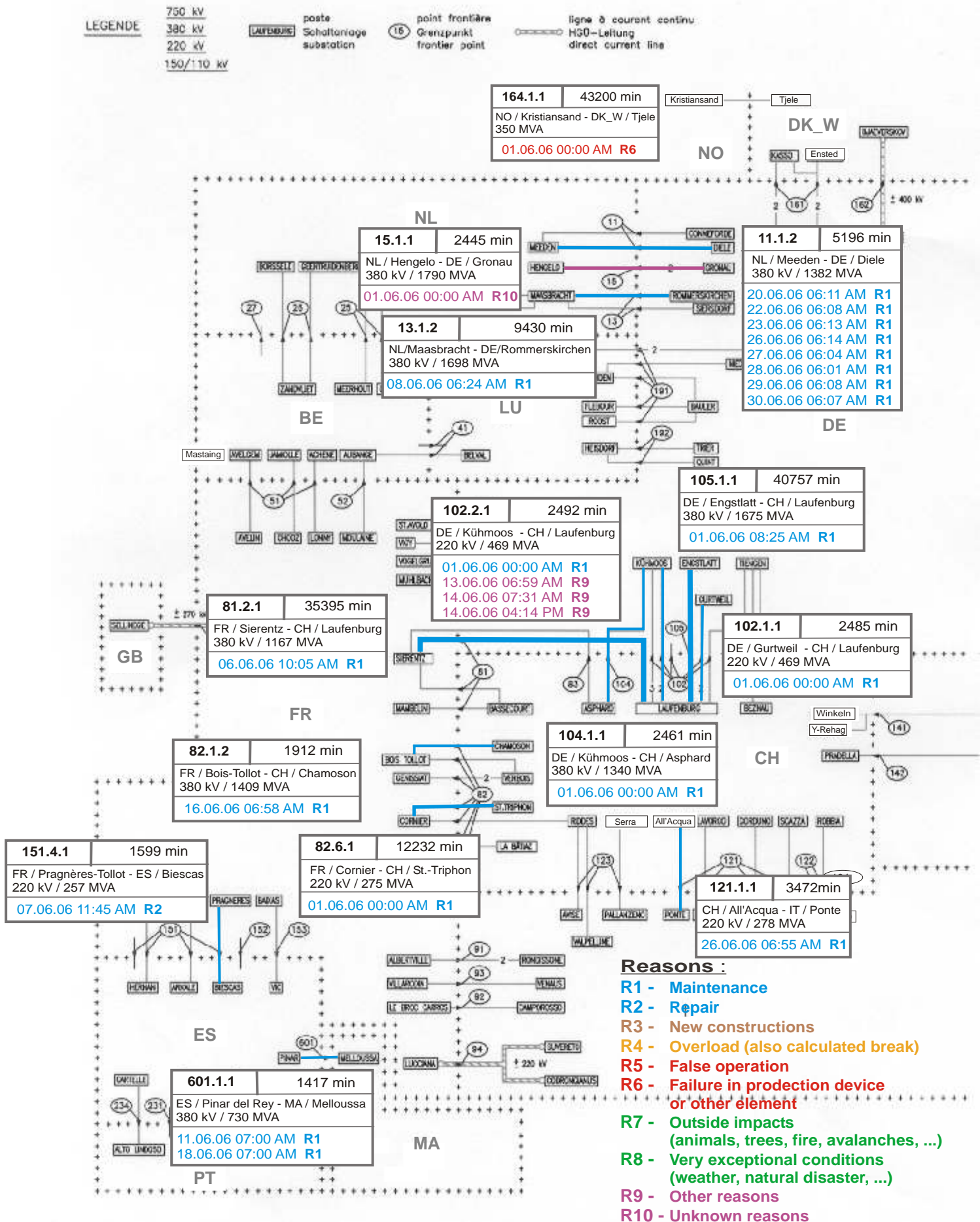
Associate member

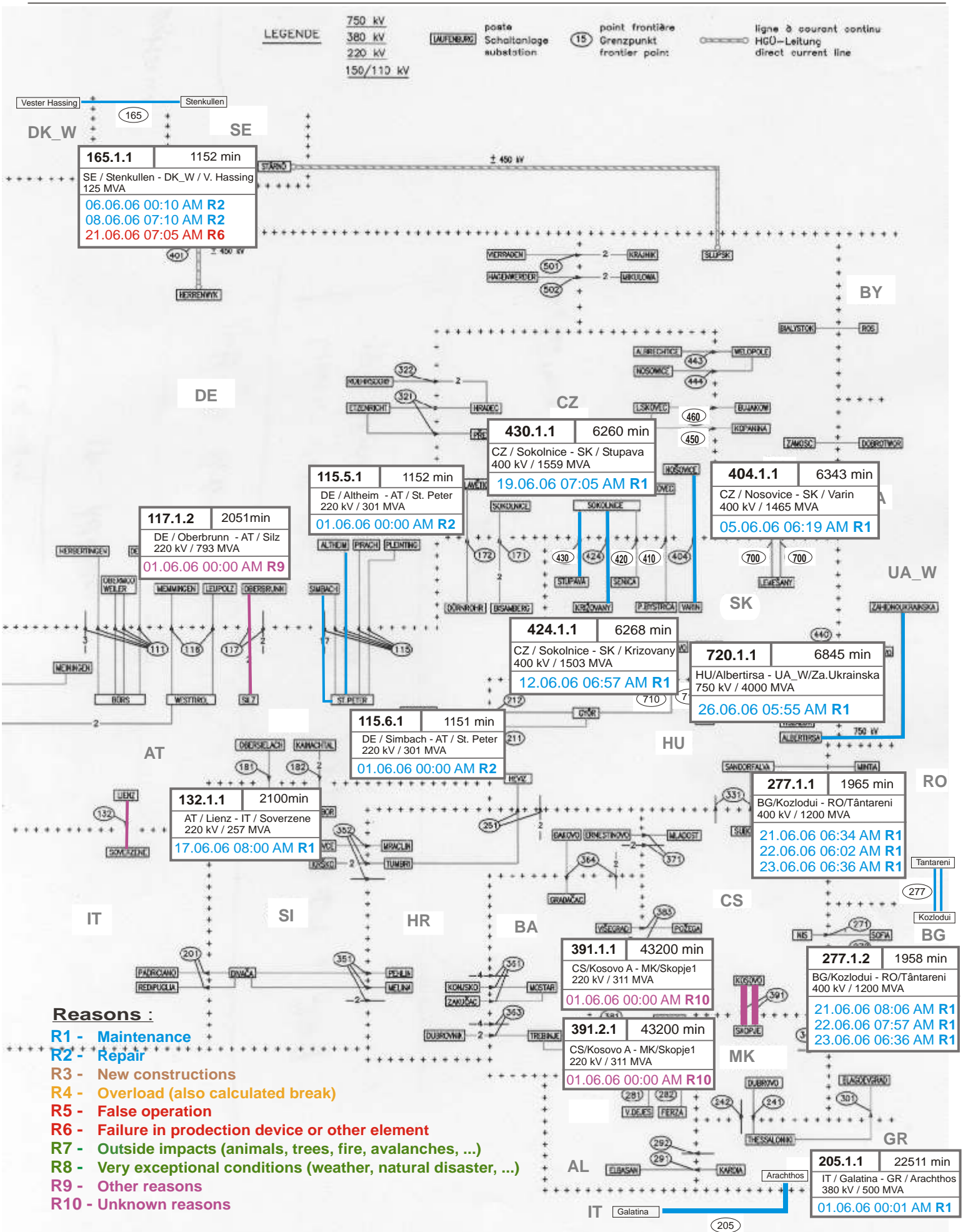
Synchronous operation with UCTE region

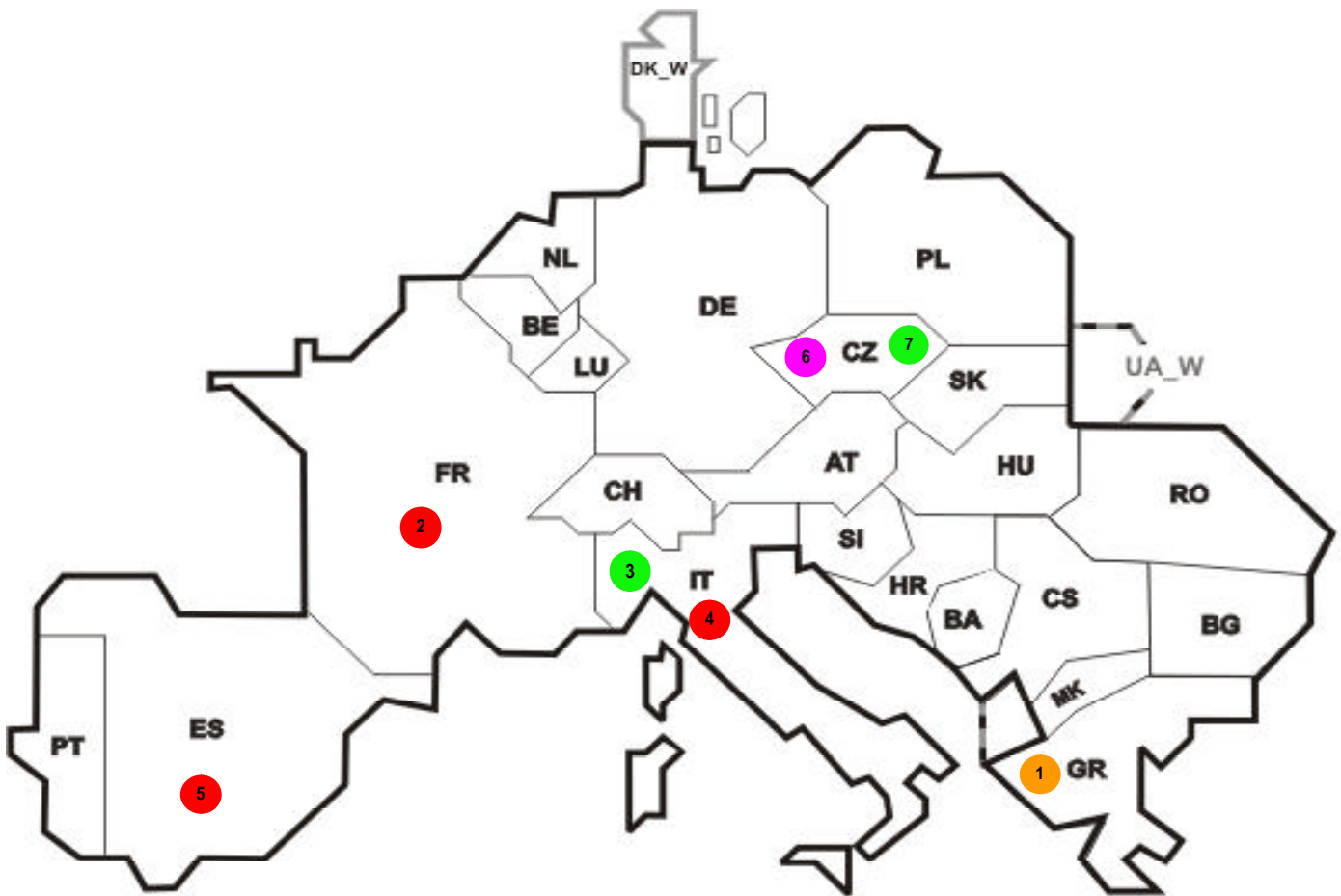
Sum of load flows in MW:

UCTE = 34413 MW
 Total = 38687 MW

I = Import balance
 E = Export balance







Reasons:

R4 Overload (also calculated break)

R5 False operation

R6 Failure in protection device or other element

R7 Outside impacts (animals, trees, fire, avalanches, ...)
(animals, trees, fire, avalanches, ...)

R8 Very exceptional conditions
(weather, natural disaster, ...)

R9 Other reasons

R10 Unknown reasons

No	Country	Substation	Reason	Energy not supplied [MWh]	Total loss of power [MW]	Restoration time [min]	Equivalent time of interruption ¹
1	GR	Thessaloniki	R4	493	740	40	4,83
2	FR	Warande	R6	47	80	44	0,05
3	IT	Somplago	R8	15	80	11	0,02
4	IT	Misterbianco-Sorgente	R6	13	200	4	0,02
5	ES	Aguayo	R6	3	49	4	0,01
6	CZ	Vyskov	R9	0	200	84	0,00
7	CZ	Vitkov	R8	0	100	16	0,00

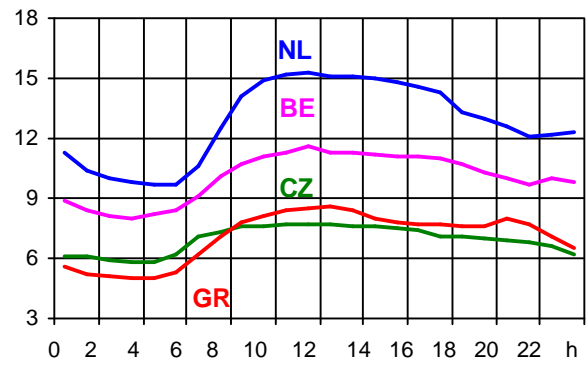
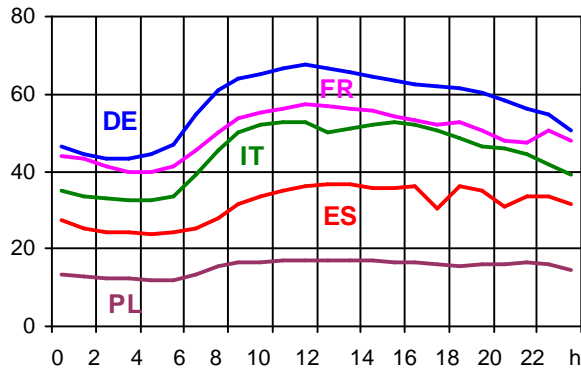
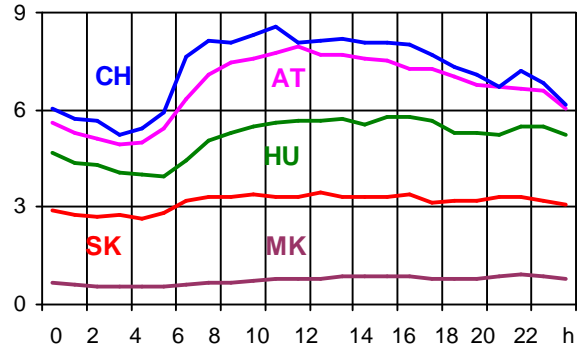
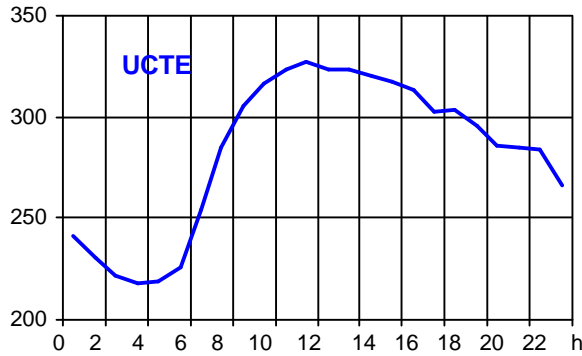
¹ (year [in min] * energy not supply) / consumption last 12 months

Control area	Export Programs	Import Programs	Export Programs at 03:00	Import Programs at 03:00	Export Programs at 11:00	Import Programs at 11:00
AT	691534	631334	989	1386	951	1561
BA	218134	160866	391	245	410	260
BE	736776	1362990	794	1932	1212	2273
BG	n.a.	n.a.	n.a.	n.a.	n.a.	n.a.
CH	2319192	2159166	2760	3554	3687	1715
CS	508439	431713	324	302	403	525
CZ	1694174	527094	2379	768	2406	1145
DE	2295402	2388161	2342	3570	2655	3549
ES	959064	696354	1559	1227	1478	300
FR	7434050	1640908	10858	1709	9806	3731
GR	18546	475210	0	665	0	628
HR	165805	709898	317	1087	349	1212
HU	469174	1137868	619	1269	600	1954
IT	53472	4197443	45	5443	50	6201
MK	2500	134600	60	185	18	206
NL	155746	2287642	362	3191	12	2567
PL	972896	205210	1478	141	1400	440
PT	70966	743039	27	1427	0	946
RO	365463	123326	221	149	654	165
SI	642325	496715	1095	657	955	703
SK	713764	418006	905	327	1062	812
DK_W	562328	365863	960	600	1270	249
UA_W	341681	0	473	0	547	0

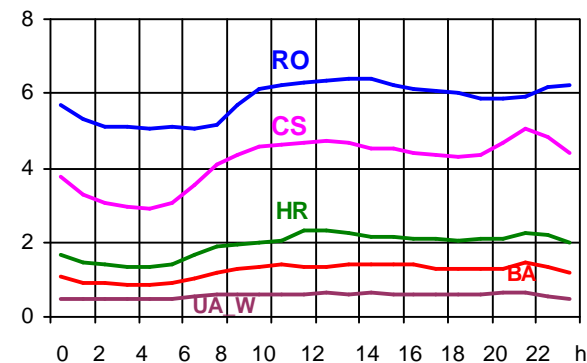
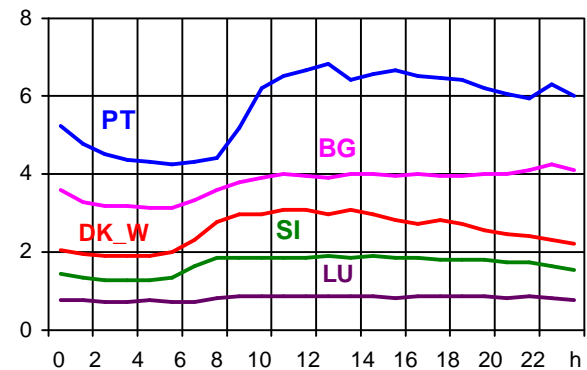
- Control areas can differ from national borders (i.e. German block which includes parts of AT, LU and DK).
- Values are calculated on an hourly base (MWh).
- This values are not the provisional values entered in the VULCANUS system, but the definitive values after an eventual correction during the actual date.
- Export Programs: Sum of all positive values of every hour of every border
- Import Programs: Sum of all negative values of every hour of every border
- Export Programs at 03:00: Sum of all positive values the third Wednesday from 02:00 to 03:00 a.m.
- Import Programs at 03:00: Sum of all negative values the third Wednesday from 02:00 to 03:00 a.m.
- Export Programs at 11:00: Sum of all positive values the third Wednesday from 10:00 to 11:00 a.m.
- Import Programs at 11:00: Sum of all negative values the third Wednesday from 10:00 to 11:00 a.m.

Consumption hourly load curves on 21.06.2006

Values in GW



	Highest load		Load representativity %	Parallel power ² MW
	MW	var.% ¹		
AT	7940	6,6	100	9294
BA	1455	3,6	100	1548
BE ³	11561	4,7	100	10290
BG	4264	6,6	100	4387
CH	8572	1,1	100	10458
CS	5028	2,9	100	4789
CZ	7732	2,5	100	9380
DE	74179	-0,4	91	72900
ES	37629	8,7	98	36364
FR	57315	0,8	100	62962
GR	8586	17,0	100	7751
HR	2319	16,7	100	1442
HU	5817	6,0	100	4331
IT	52893	9,7	100	45742
LU	886	78,6	100	876
MK	896	-5,7	100	608
NL	15321	4,0	100	11683
PL ⁴	17182	6,6	100	21524
PT	7105	0,3	96	5578
RO	6406	4,4	100	6740
SI	1988	7,6	95	2082
SK	3440	6,0	100	3539
UCTE	327371	4,6		334268
DK_W	3072	1,4	100	4425
UA_W	651	-0,9	100	1153



¹ Variation as compared to corresponding month of the previous year

² Power produced in parallel operation (including autoproduction)

³ The reported figures are best estimates based on actual measurements and extrapolations.

⁴ Average value of each hour



Contact

Boulevard Saint-Michel, 15
B-1040 Brussels – Belgium
Tel +32 2 741 69 40 – Fax +32 2 741 69 49

info@ucte.org
www.ucte.org