

# UCTE



June 2003

Monthly provisional values  
union for the co-ordination of transmission of electricity

<b>Table of contents <sup>1</sup></b>		<b>Page</b>
1	Electricity supply situation of the countries	2
2	Physical energy flows	3
3	Monthly consumption	4
4	Monthly consumption variation	5
5	Consumption of last 12 months	6
6	Variation of the last 12 months' consumption	7
7	Load flows (night)	8
8	Load flows (day)	9
9	Unavailability of international tie lines ( major events )	10
10	Network reliability ( major events )	12
11	Scheduled exchanges	13
12	Load on the 3 <sup>rd</sup> Wednesday	14

<sup>1</sup> Monthly provisional values as of UCTE database from 30 October 2003

# 1

## Electricity supply situation of the countries

June 2003

Countries	Net production in GWh <sup>1</sup>				Exchange balance in GWh	Pump in GWh	Consumption in GWh <sup>1</sup>			
	Hy	Tn	Tc	Total			monthly	Δ <sup>3</sup> [%]	last 12 months	Δ <sup>3</sup> [%]
B	97	3590	2389	6076 <sup>2</sup>	475	109	6442	0,7	83990	1,6
D	1652	11832	24751	38235 <sup>2</sup>	407	649	37993	1,0	504155	1,5
E	2577	4456	11726	18759 <sup>2</sup>	409	415	18753	8,1	215119	2,6
F	4958	31010	2438	38406	-5121	502	32783	2,2	441284	1,1
GR	356	0	3755	4111 <sup>2</sup>	247	81	4277	0,8	48440	1,5
I	4885	0	19742	24627	4099	876	27850	4,8	314541	2,1
SLO	266	286	406	958	52	0	1010	5,3	12200	7,1
HR	263	0	522	785 <sup>2</sup>	373	12	1146	6,7	15015	1,3
BiH	228	0	601	829	106	0	935	n.a.	n.a.	n.a.
FYROM	133	0	278	411 <sup>2</sup>	2	0	413	n.a.	n.a.	n.a.
SCG	752	0	1723	2475	88	12	2551	n.a.	n.a.	n.a.
L	74	0	245	319	257	92	484	-0,6	6066	-2,3
NL	0	323	6849	7172 <sup>2</sup>	1568	0	8740	2,2	109459	3,1
A	3352	0	466	3818	160	276	3702	0,1	51266	0,9
P	668	0	2595	3263 <sup>2</sup>	174	57	3380	5,6	41706	2,7
CH	4312	1647	224	6183 <sup>2</sup>	-1280	383	4520	3,2	58873	2,4
CZ	94	2209	3347	5650 <sup>2</sup>	-1440	23	4187	2,3	59921	3,1
H	11	747	1698	2456 <sup>2</sup>	597	0	3053	5,6	37914	1,7
PL <sup>5</sup>	236	0	10243	10479 <sup>2</sup>	-428	181	9870	3,2	137228	1,4
SK	330	1248	542	2120 <sup>2</sup>	-222	15	1883	-0,7	26352	3,9
<b>UCTE</b>	<b>26715</b>	<b>58571</b>	<b>98545</b>	<b>183831<sup>2</sup></b>	<b>40</b>	<b>3702</b>	<b>180169</b>	<b>3,0</b>	<b>2208916</b>	<b>1,8</b>
RO	1145	0	2898	4043 <sup>2</sup>	-188	0	3855	n.a.	n.a.	n.a.
BG	326	1223	1107	2656 <sup>2</sup>	-295	19	2342	n.a.	n.a.	n.a.
West-UA	3	0	514	517 <sup>2</sup>	-267	0	250	n.a.	n.a.	n.a.

<sup>1</sup> Percentage as referred to total values in %

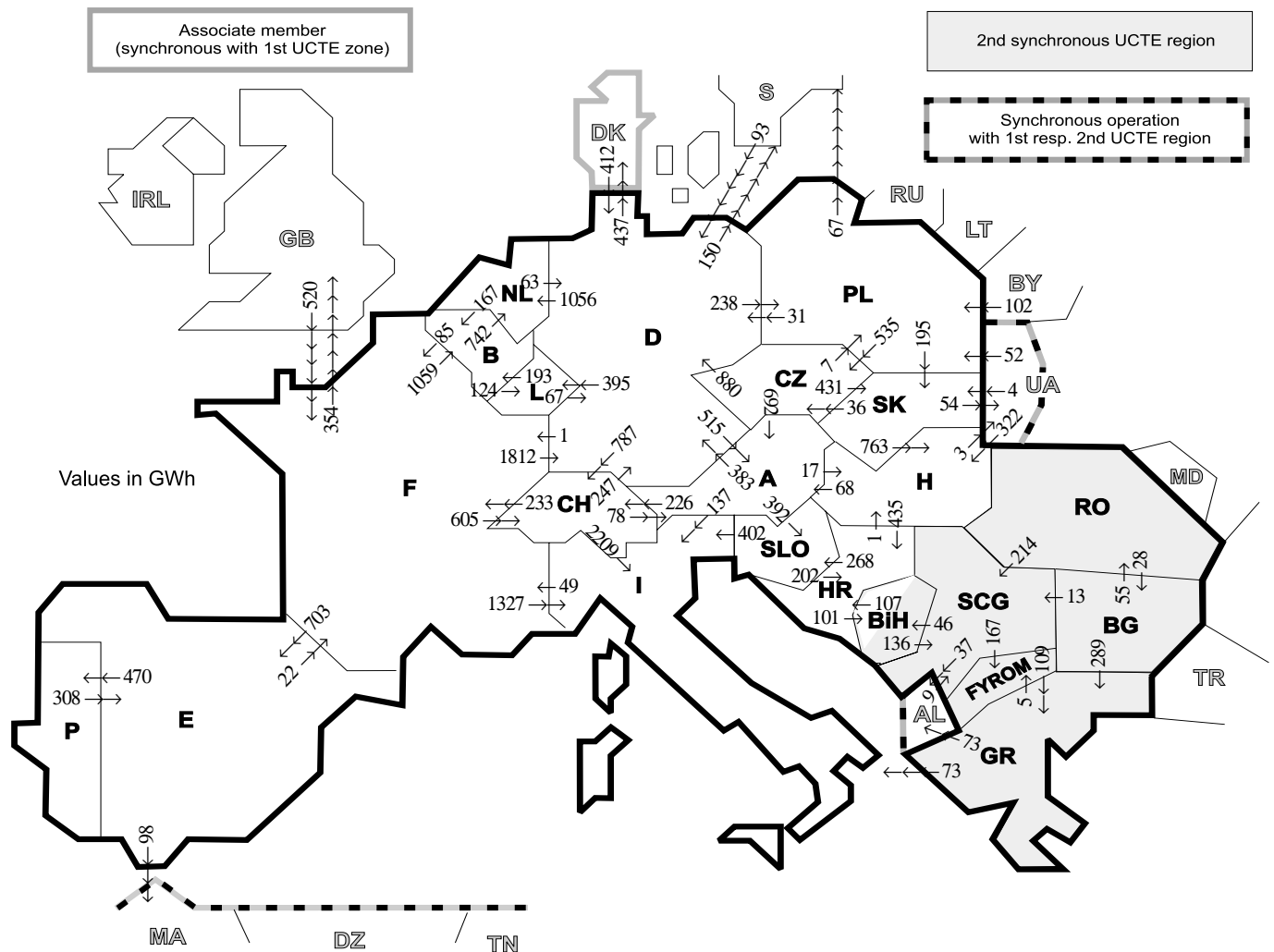
Countries	B	D	E	F	GR <sup>4</sup>	I	SLO	HR	BiH	FY- ROM	SCG	L	NL	A	P	CH	CZ	H	PL	SK	RO	BG	West- UA
Production	99	94	94	97	93	100	95	100	99	100	96	98	100	84	91	100	100	100	100	100	100	100	100
Consumption	99	94	94	97	93	100	95	100	99	100	96	99	100	90	91	100	100	100	100	100	100	100	100

<sup>2</sup> Including deliveries from industry

<sup>3</sup> Variation as compared to corresponding period of the previous year and representativity 100%

<sup>4</sup> The representativity of data referring to the whole country including the isolated systems of the Greek island is 93%.  
The representativity of data referring interconnected system on the mainland is 99%.

<sup>5</sup> Production values are gross values.



Exporting countries	Importing countries																			Σ Export						
	B	D	E	F	GR	I	SLO	HR	BIH	FY-ROM	SCG	L	NL	A	P	CH	CZ	H	PL		SK	RO	BG	West-UA	DK³	III¹
B	-	-	-	85	-	-	-	-	-	-	-	124	742	-	-	-	-	-	-	-	-	-	-	-	-	951
D	-	-	-	1	-	-	-	-	-	-	-	395	1056	515	-	787	0	-	238	-	-	-	-	437	587	3579
E	-	-	-	22	-	-	-	-	-	-	-	-	-	-	470	-	-	-	-	-	-	-	-	-	-	98
F	1059	1812	703	-	-	1327	-	-	-	-	-	-	-	-	-	605	-	-	-	-	-	-	-	-	-	354
GR	-	-	-	-	-	73	-	-	-	5	-	-	-	-	-	-	-	-	-	-	-	0	-	-	73	151
I	-	-	-	49	0	0	-	-	-	-	-	0	0	-	0	-	-	-	-	-	-	-	-	-	-	49
SLO	-	-	-	-	-	402	-	202	-	-	-	-	-	0	-	-	-	-	-	-	-	-	-	-	-	604
HR	-	-	-	-	-	-	268	101	-	-	0	-	-	-	-	-	-	1	-	-	-	-	-	-	-	370
BIH	-	-	-	-	-	-	107	-	-	-	136	-	-	-	-	-	-	-	-	-	-	-	-	-	-	243
FYROM	-	-	-	-	109	-	-	-	-	-	0	-	-	-	-	-	-	-	-	-	-	0	-	-	-	109
SCG	-	-	-	-	-	-	-	0	46	167	-	-	-	-	-	-	-	0	-	-	0	36	-	-	37	286
L	193	67	-	-	-	-	-	-	-	-	-	-	-	-	-	-	-	-	-	-	-	-	-	-	-	260
NL	167	63	-	-	-	-	-	-	-	-	-	-	-	-	-	-	-	-	-	-	-	-	-	-	-	230
A	-	383	-	-	-	137	392	-	-	-	-	-	-	-	-	-	-	-	-	-	-	-	-	-	-	1155
P	-	-	308	-	-	-	-	-	-	-	-	-	-	-	-	-	226	0	17	-	-	-	-	-	-	308
CH	-	247	-	233	-	2209	-	-	-	-	-	-	-	78	-	-	-	-	-	-	-	-	-	-	-	2767
CZ	-	880	-	-	-	-	-	-	-	-	-	-	692	-	-	-	-	-	7	431	-	-	-	-	-	2010
H	-	-	-	-	-	-	435	-	-	-	0	-	-	68	-	-	-	-	-	0	0	-	3	-	-	506
PL	-	31	-	-	-	-	-	-	-	-	-	-	-	-	-	-	535	-	-	195	-	-	0	-	0	828
SK	-	-	-	-	-	-	-	-	-	-	-	-	-	-	-	-	36	763	0	-	-	-	54	-	54	853
RO	-	-	-	-	-	-	-	-	-	-	214	-	-	-	-	-	-	-	0	-	-	28	-	-	-	242
BG	-	-	-	-	289	-	-	-	-	0	13	-	-	-	-	-	-	-	-	-	55	-	-	-	-	357
West-UA	-	-	-	-	-	-	-	-	-	-	-	-	-	-	-	-	-	322	52	4	0	-	-	-	-	378
DK²	-	412	-	-	-	-	-	-	-	-	-	-	-	-	-	-	-	-	-	-	-	-	-	-	-	412
III¹	-	505	0	520	0	-	-	-	-	-	9	-	-	-	-	-	-	322	154	4	0	0	-	-	-	1514
Σ Import	1419	3988	1011	910	398	4148	660	744	147	172	372	519	1798	1353	470	1618	571	1103	399	630	55	64	57	437	1273	23822

Sum of physical energy flows between UCTE countries = 21092 GWh

Total physical energy flows = 23822 GWh

¹ III = Third countries: Albania, Belarus, Denmark, Great Britain, Morocco, Republic of Moldavia, Sweden, Republic of Turkey and West-Ukraine

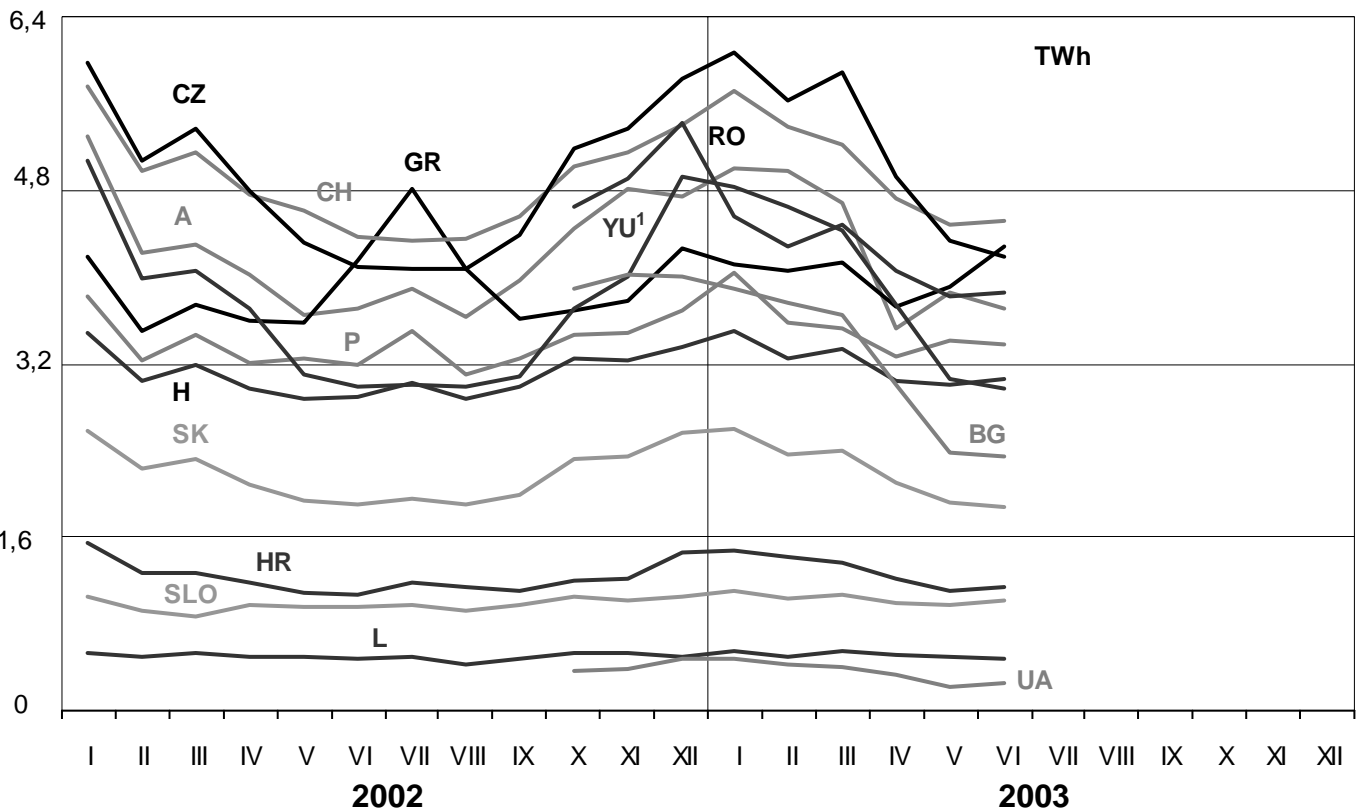
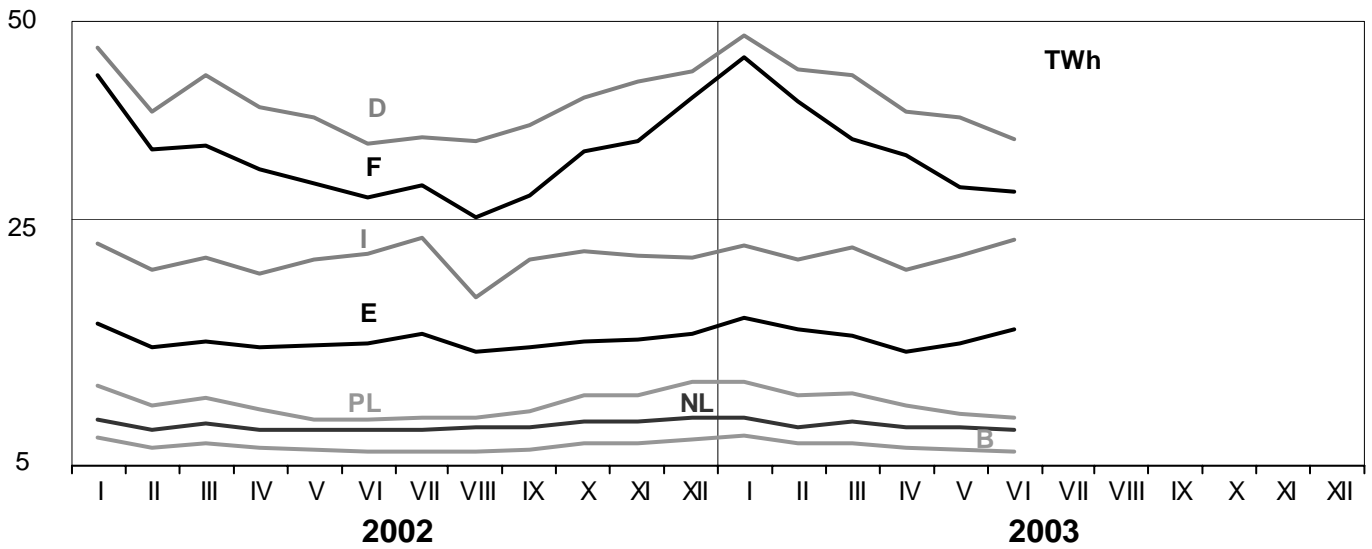
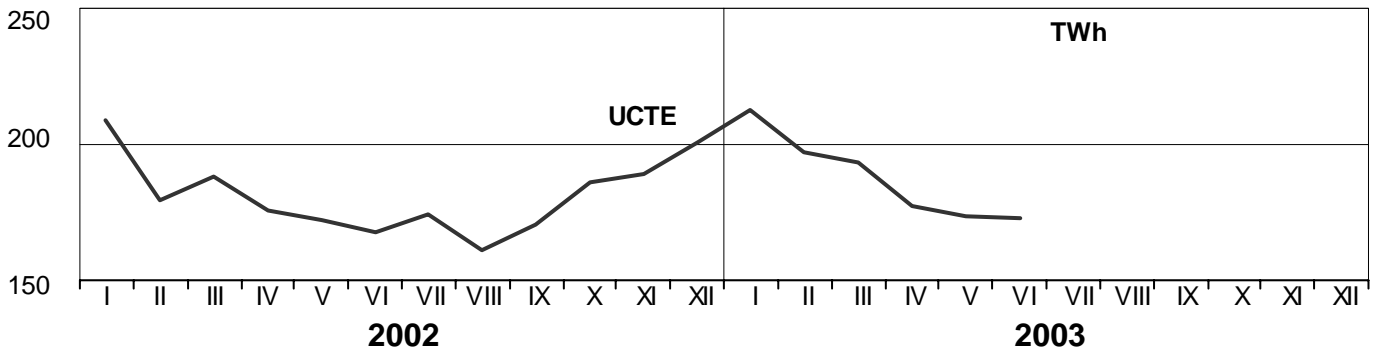
² Denmark (Jutland)

These physical energy flows were measured on the cross-frontier transmission lines (≥ 110 kV) listed in table 9 of the Statistical Yearbook. These values may differ from the official statistics and the exchange balances in chapter 1.

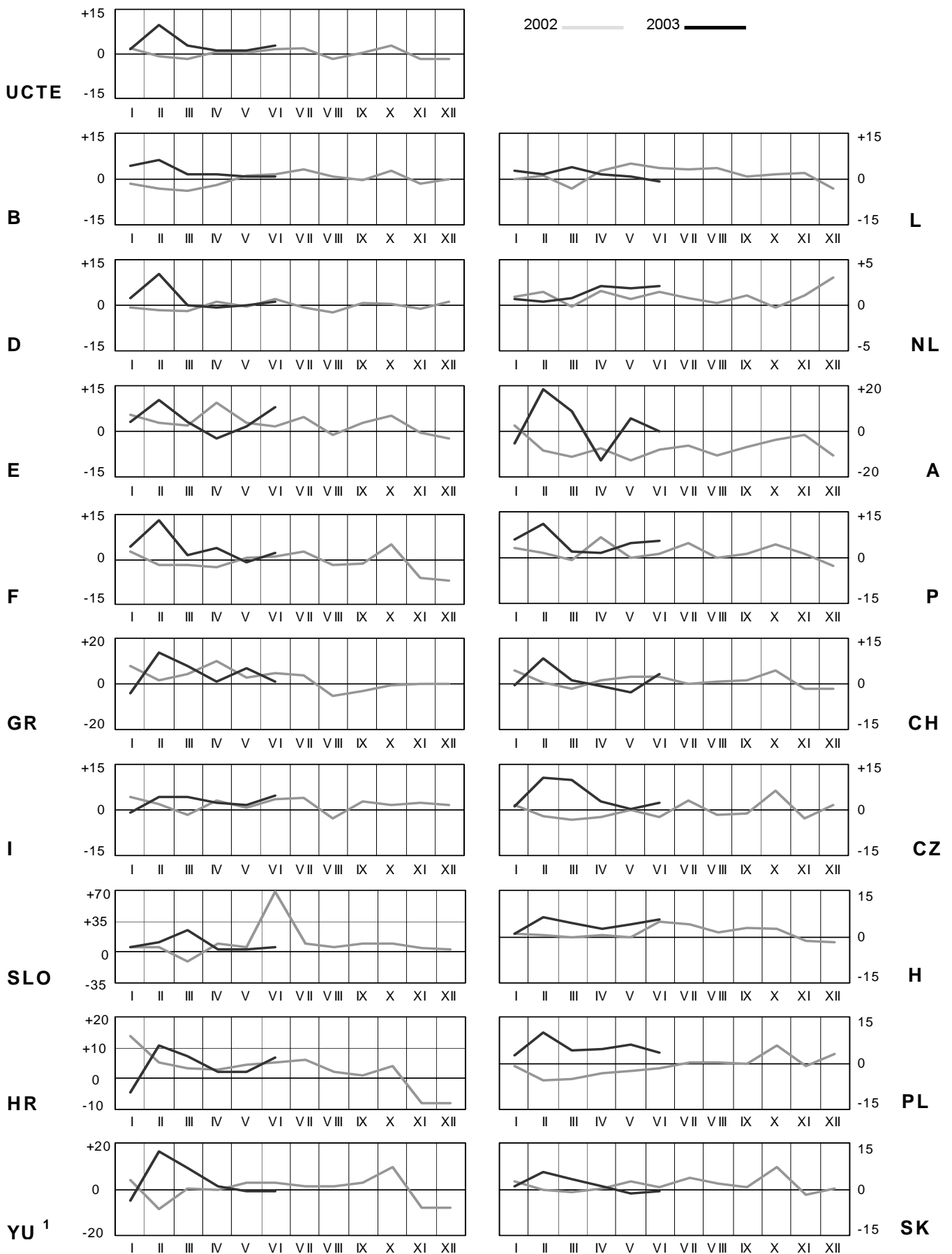
# 3

## Monthly consumption

June 2003



<sup>1</sup> YU = FRY + FYROM (Federal Republic of Yugoslavia and former Yugoslav Republic of Macedonia)

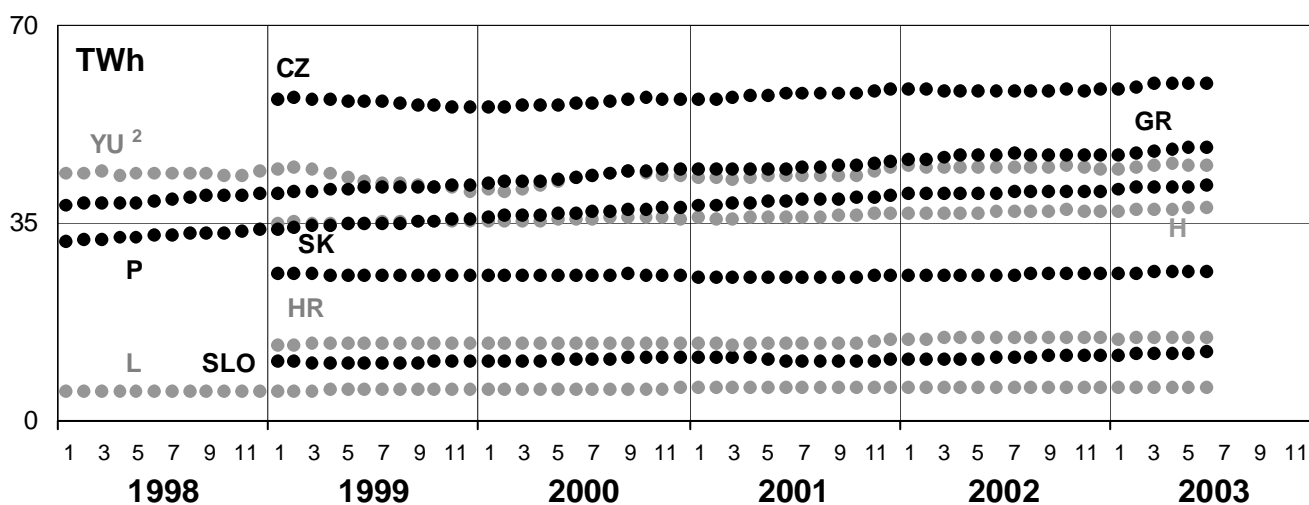
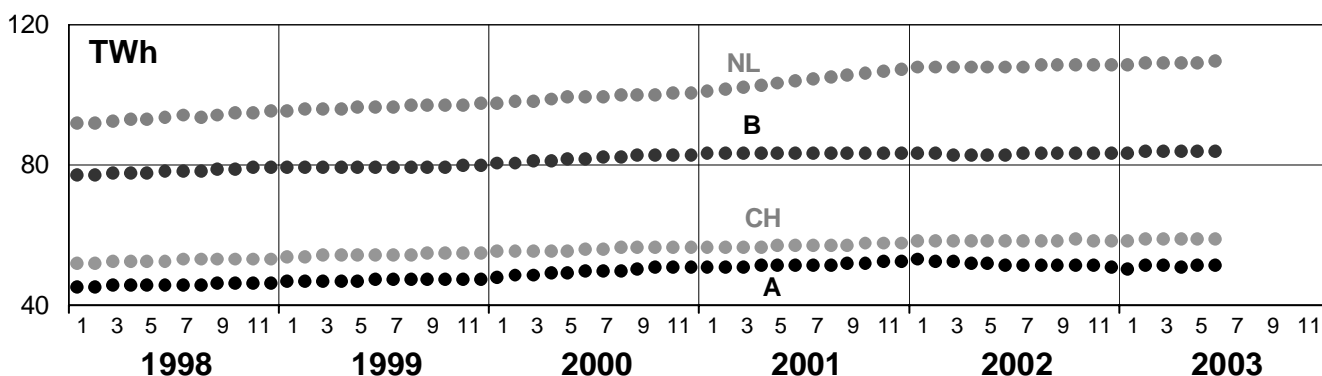
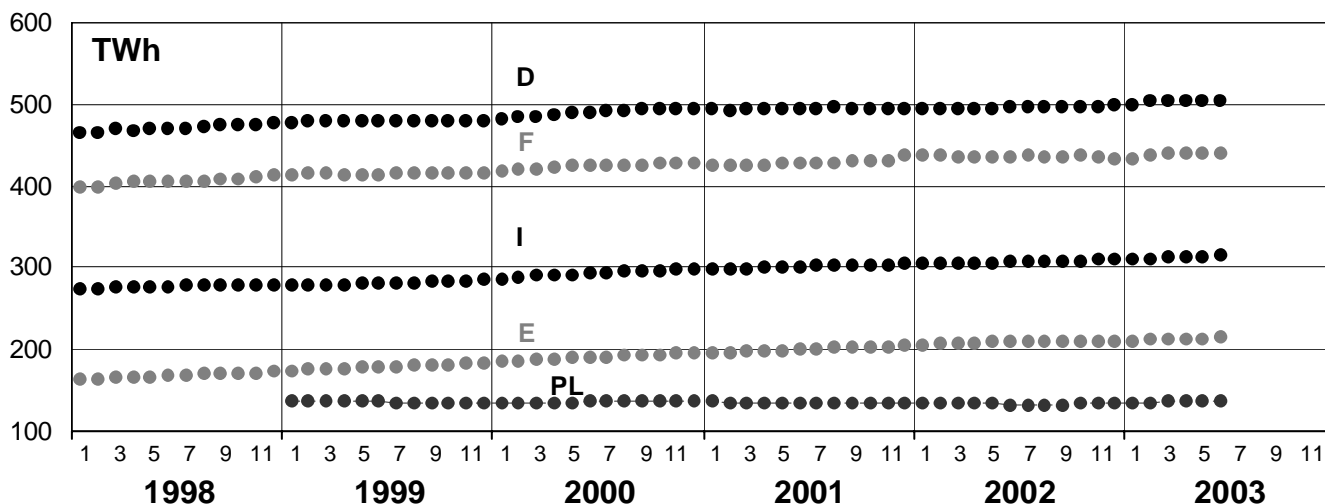
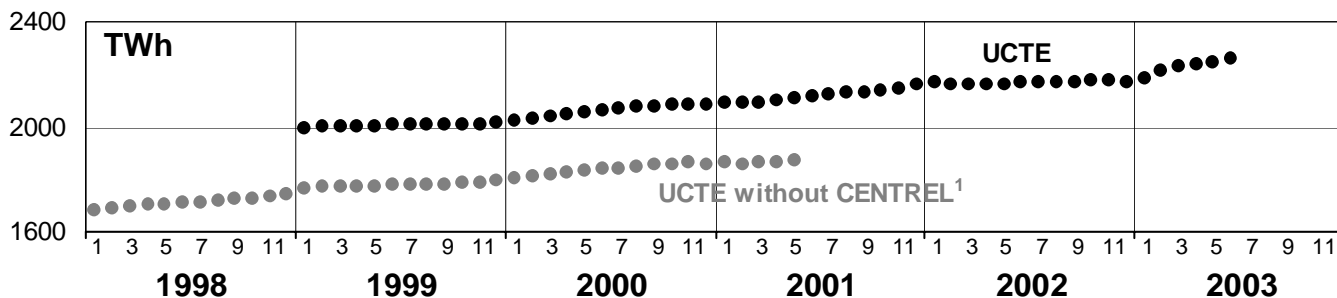


<sup>1</sup>YU = FRY + FYROM (Federal Republic of Yugoslavia and former Yugoslav Republic of Macedonia)

# 5

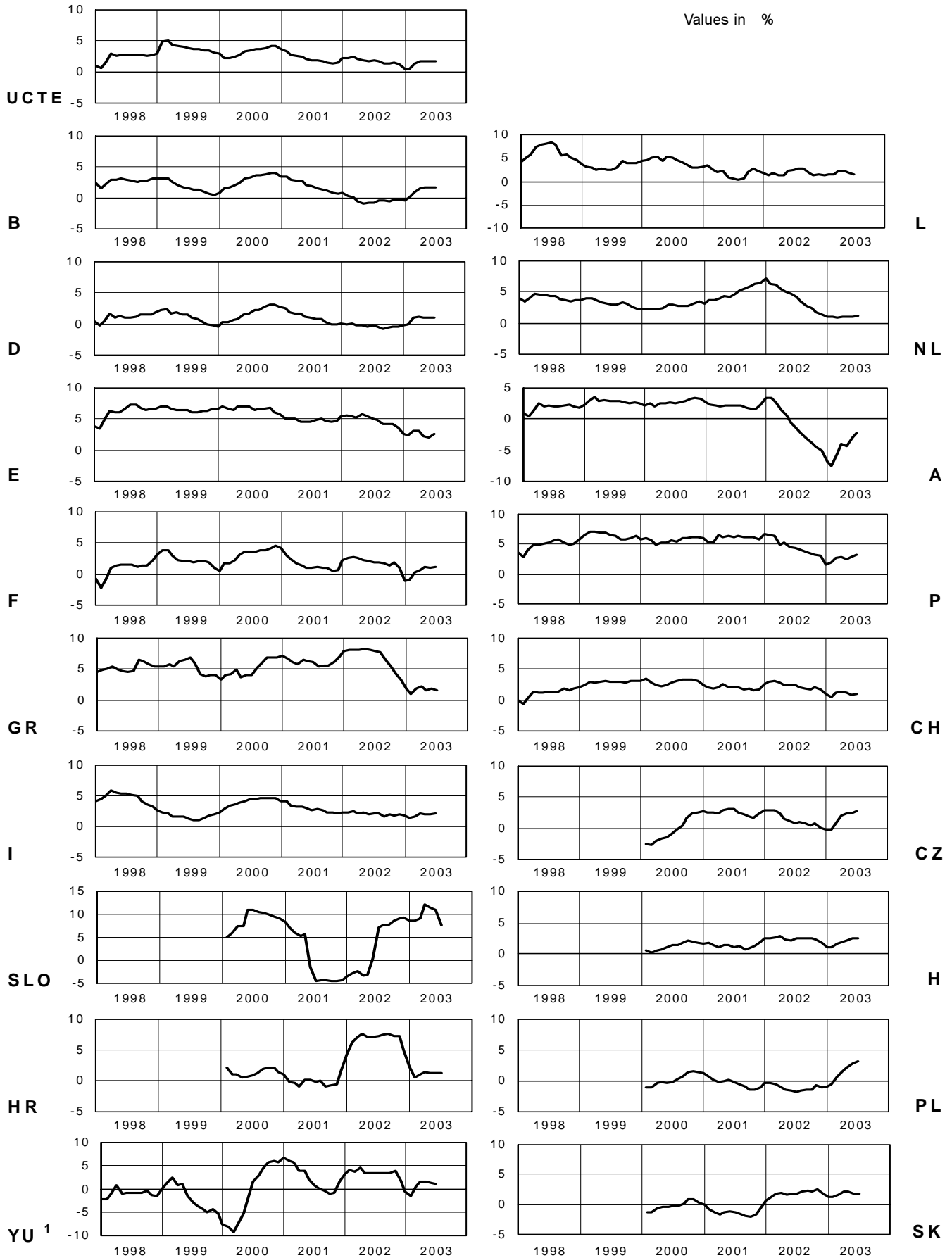
## Consumption of last 12 months

June 2003



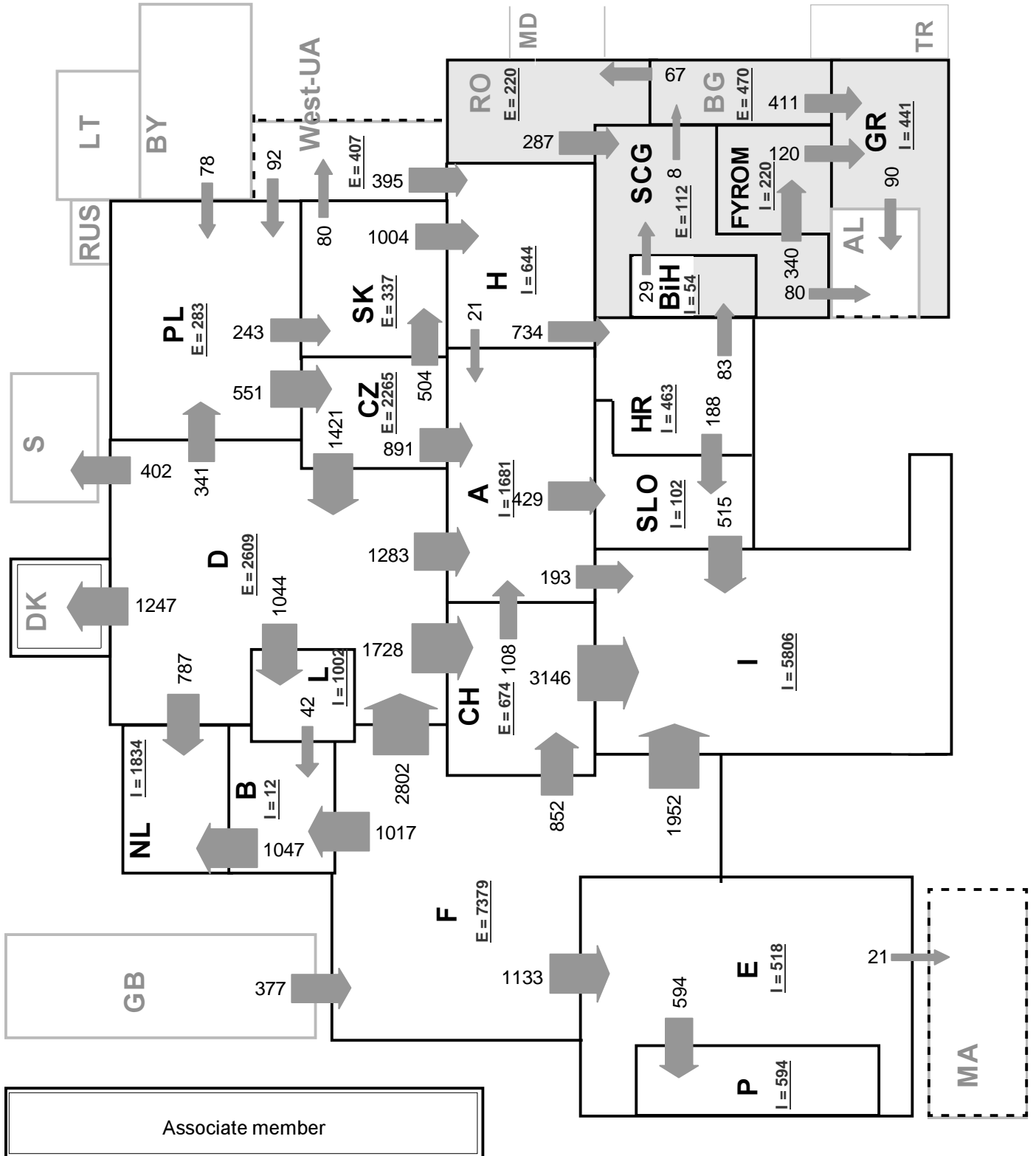
<sup>1</sup> CENTREL countries CZ, H, PL and SK member of UCTE from May 2001

<sup>2</sup> YU = FRY + FYROM (Federal Republic of Yugoslavia and former Yugoslav Republic of Macedonia)



<sup>1</sup> YU = FRY + FYROM (Federal Republic of Yugoslavia and former Yugoslav Republic of Macedonia)





Associate member

Synchronous operation with 1st resp. 2nd UCTE region

2nd synchronous UCTE region

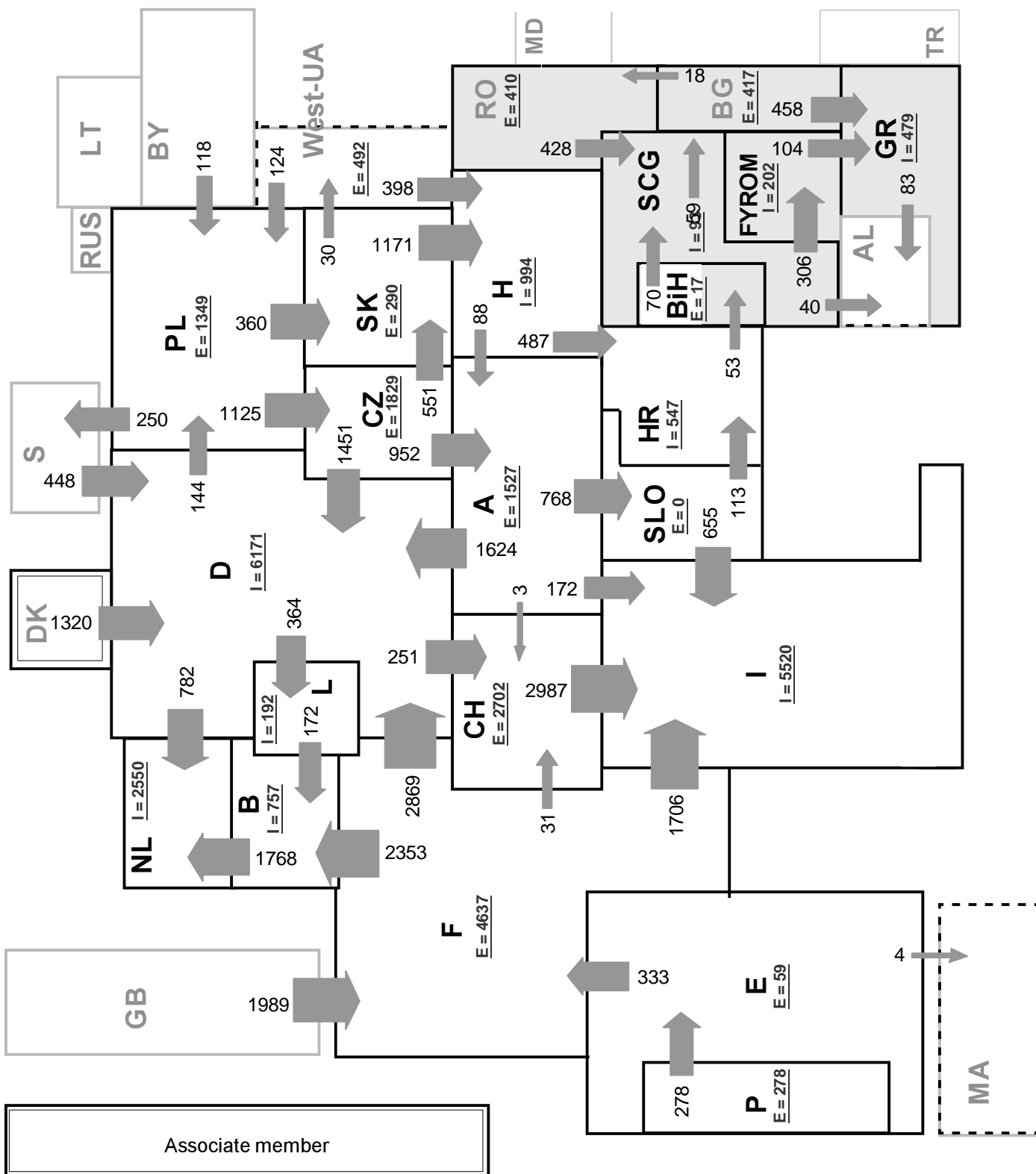
**Sum of load flows in MW:**

UCTE = 25915      Total = 28777

\* Central European Time (CET)

I = Import balance

E = Export balance



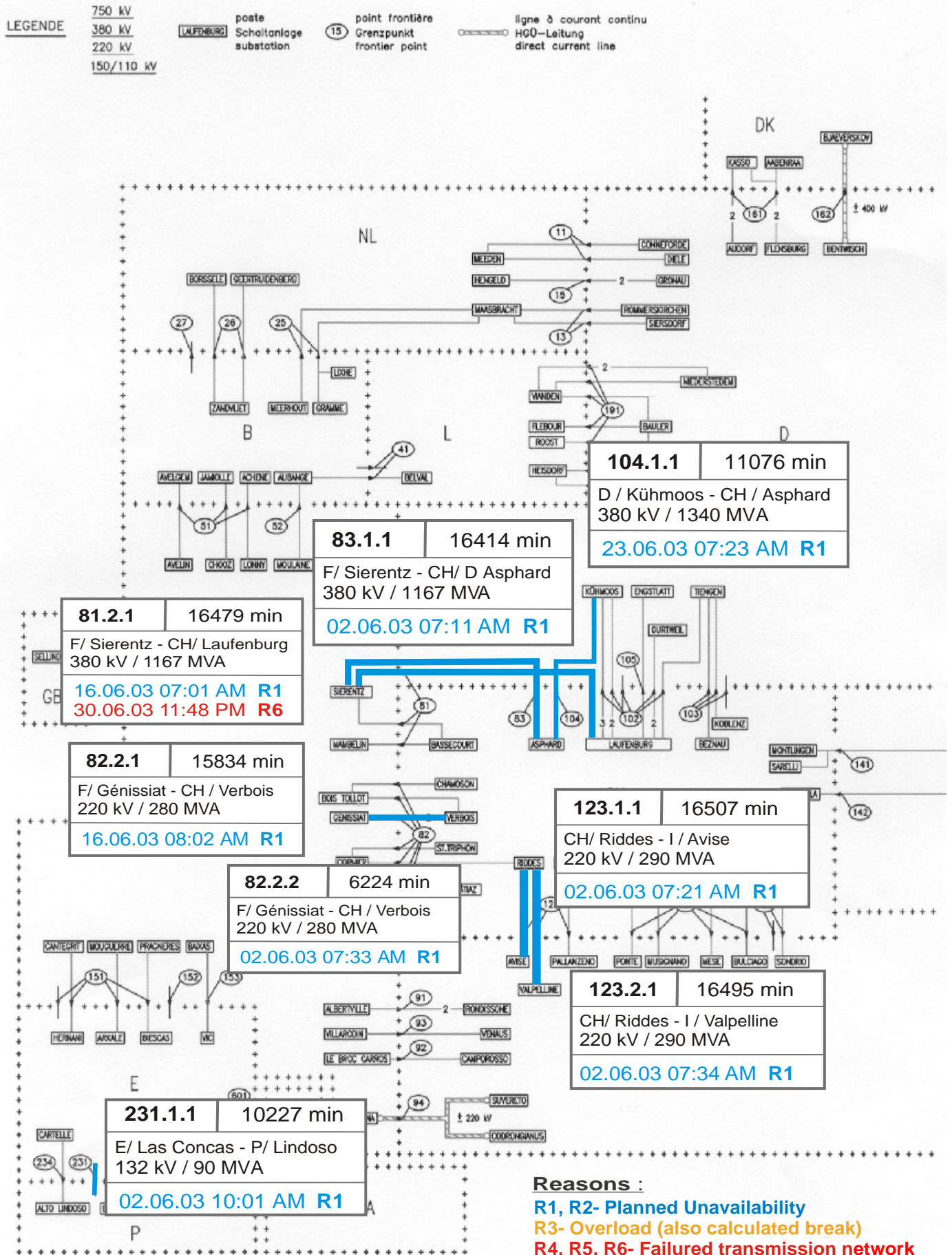
**Sum of load flows in MW:**

UCTE = 25054      Total = 29858

\* Central European Time (CET)

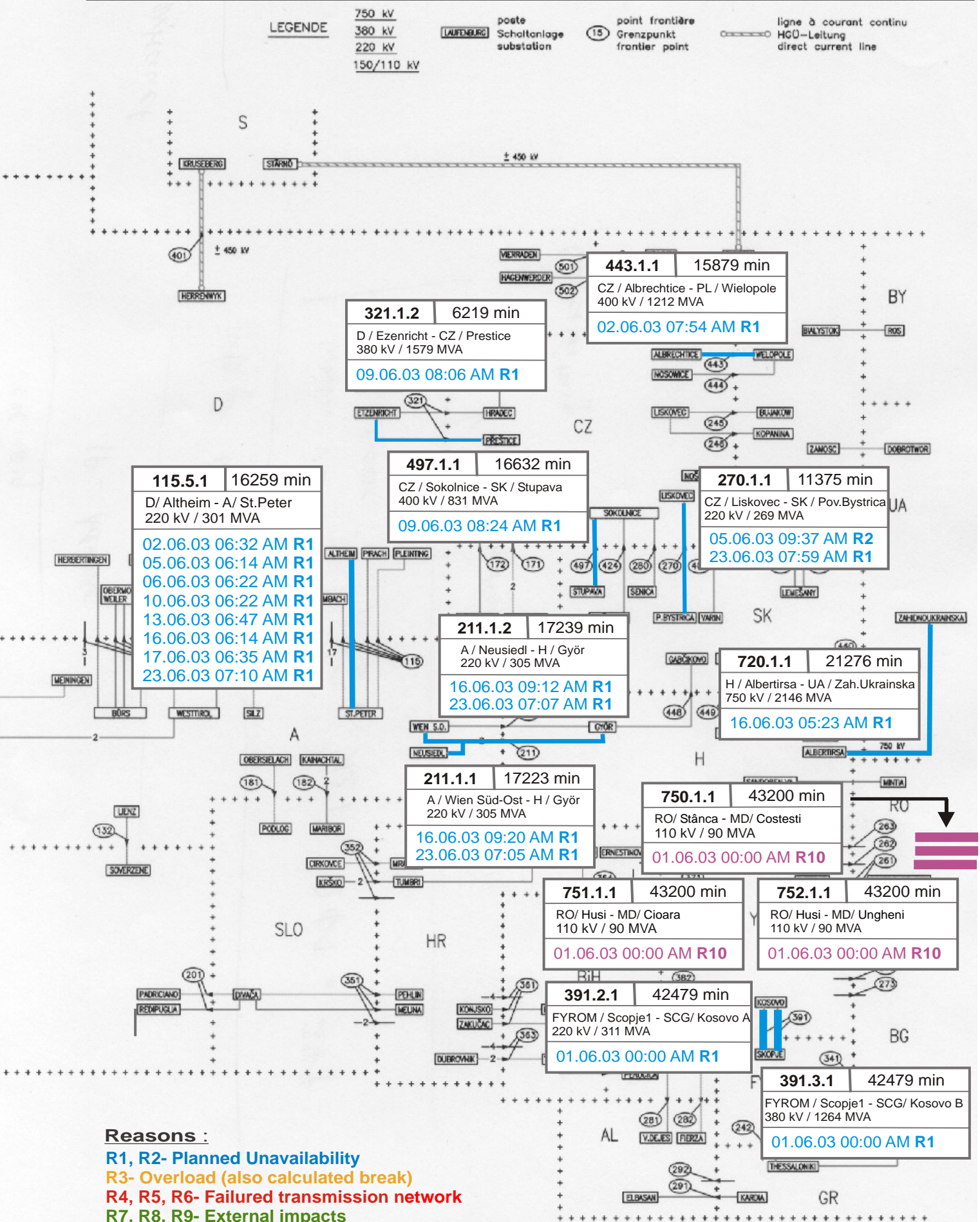
I = Import balance

E = Export balance



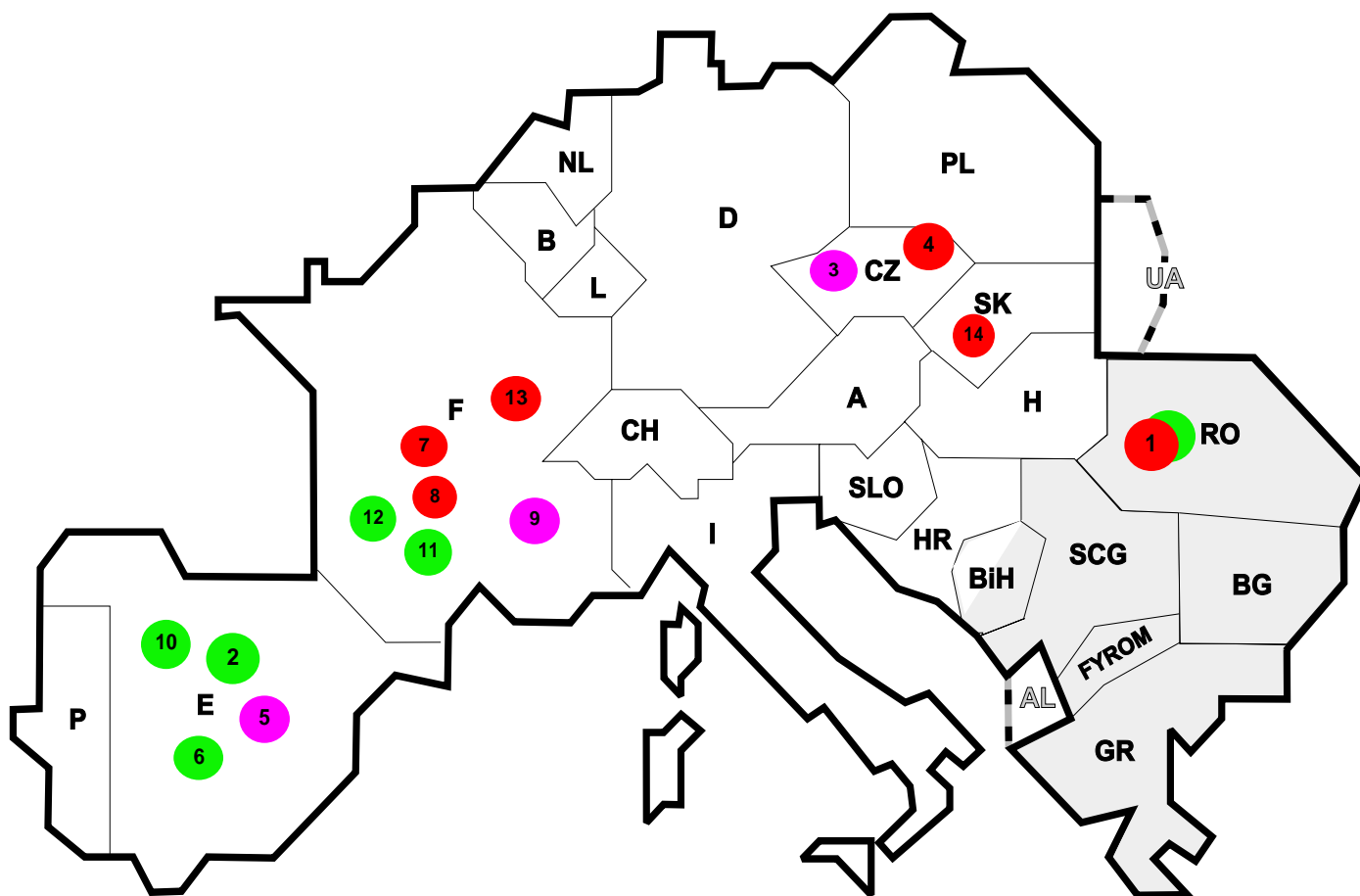
**Reasons :**

- R1, R2- Planned Unavailability
- R3- Overload (also calculated break)
- R4, R5, R6- Failed transmission network
- R7, R8, R9- External impacts
- R10, R11- Other reasons



**Reasons :**

- R1, R2- Planned Unavailability
- R3- Overload (also calculated break)
- R4, R5, R6- Failed transmission network
- R7, R8, R9- External impacts
- R10, R11- Other reasons



Reasons:

- R3**                      **Overload**
- R4, R5, R6**    **Failure in the transmission network**
- R7, R8, R9**    **External impacts (animals...)**
- R10, R11**      **Other reasons**

Nbr	Country	Substation	Reason	Energie not supplied [ MWh ]	Total loss of power [ MW ]	Restoration time [ min ]	Equivalent time of interruption <sup>1</sup>
1	RO	Tantareni	R5, R8	265	300	53	6,30
2	E	Aluminio	R8	165	0	45	0,00
3	CZ	Sokolnice	R10	88	24	30	0,21
4	CZ	Chrast	R4	84	60	36	0,53
5	E	Canyet	R10	42	1320	9	3,23
6	E	Meson	R8	35	0	21	0,00
7	F	Quatre-écluses	R4	34	17	121	0,02
8	F	Verlhaguet	R4	25	76	31	0,09
9	F	Peyrou	R10	21	63	20	0,08
10	E	San Celoni	R8	20	0	10	0,00
11	F	Boutre	R7	13	2	380	0,00
12	F	Plaud	R8	10	16	40	0,02
13	F	Belle de Mai	R4	9	42	21	0,05
14	SK	R. Sobota	R5	6	116	3	2,31

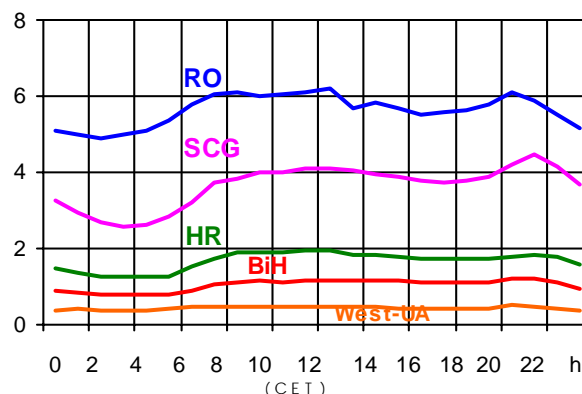
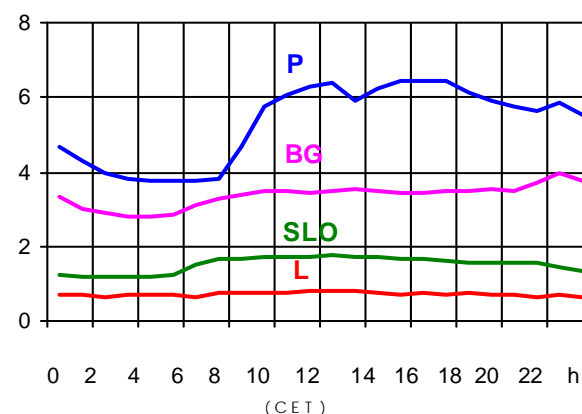
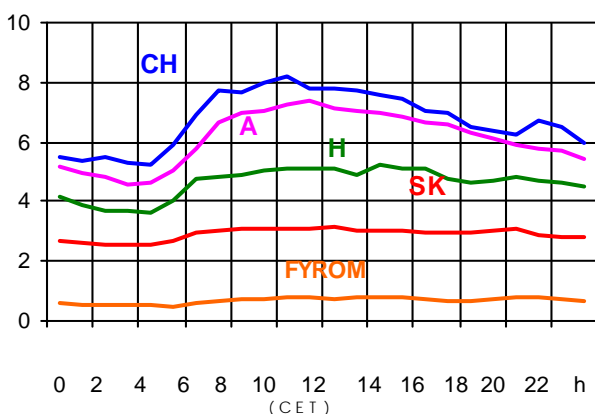
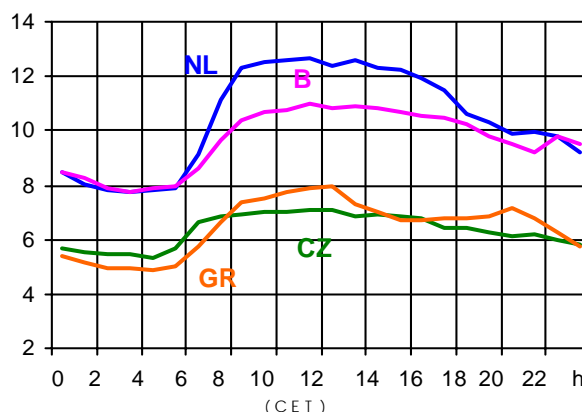
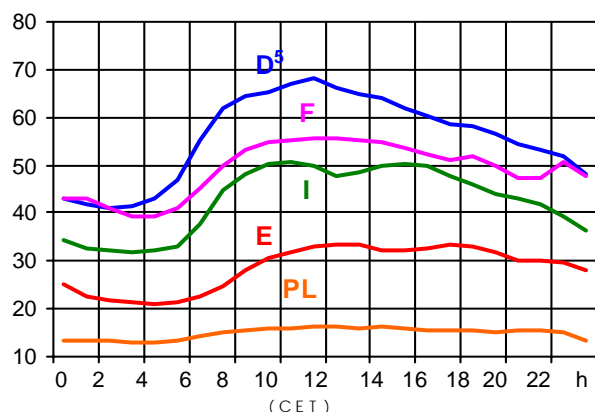
<sup>1</sup> ( year [in min] \* power loss ) / consumption last 12 months

Control area	Prog_exp	Prog_imp	Prog_exp3	Prog_imp3	Prog_exp11	Prog_imp11
B	420198	982863	815	1056	547	1238
D	2454258	2932001	2772	3431	2779	6075
E	341695	748009	609	1200	388	258
F	7143062	2184569	9363	1965	8622	4101
GR	73810	329856	0	488	0	518
I	48881	4148372	0	5806	5	5525
SLO	460842	514793	623	687	710	677
HR	n.a.	n.a.	n.a.	n.a.	n.a.	n.a.
BiH	79	119	273	213	183	194
FYROM	n.a.	n.a.	n.a.	n.a.	n.a.	n.a.
SCG	309719	388418	581	519	539	629
NL	371511	1940184	433	2286	454	3010
A	891529	411096	1363	539	1060	608
P	194289	368069	0	601	813	546
CH	2728521	1584404	2728	2208	4777	2396
CZ	1778451	332007	2537	250	2481	625
H	327134	923955	547	1192	400	1393
PL	630968	137985	450	185	1521	125
SK	582420	328492	730	372	930	592
RO	208418	24624	209	25	360	43
BG	n.a.	n.a.	n.a.	n.a.	n.a.	n.a.
UA	267044	0	324	0	370	0

- Control areas can differ from national borders ( i.e. German block which includes parts of A, L and DK ).
- Values are calculated on an hourly base ( MWh ).
- This values are not the provisional values entered in the VULCANUS system, but the definitive values after an eventual correction during the actual date.
- Prog\_exp: Sum of all positive values of every hour of every border
- Prog\_imp: Sum of all negative values of every hour of every border
- Prog\_exp3: Sum of all positive values the third Wednesday from 02:00 to 03:00 a.m.
- Prog\_imp3: Sum of all negative values the third Wednesday from 02:00 to 03:00 a.m.
- Prog\_exp11: Sum of all positive values the third Wednesday from 10:00 to 11:00 a.m.
- Prog\_imp11: Sum of all negative values the third Wednesday from 10:00 to 11:00 a.m.

### Consumption hourly load curves<sup>1</sup> on 18.06.03

Values in GW



	Peak load MW	$\Delta$ % <sup>2</sup>	Cons_load_repr <sup>1</sup> %	Parallel load <sup>3</sup> MW
B	10954	-0,9	100	10035
D	68200	1,0	91	74700
E	33459	8,3	94	31741
F <sup>4</sup>	55898	2,0	97	63208
GR <sup>4</sup>	7942	3,4	93	7275
I	50587	0,1	100	44065
SLO	1749	4,6	95	1710
HR	1950	1,6	100	1439
BIH	1202	n.a.	100	1136
FYROM	829	n.a.	100	570
SCG	4450	n.a.	96	3929
L	796	7,3	99	779
NL	12708	1,0	90	10018
A	7406	2,2	82	7130
P	6453	14,0	92	6008
CH	8195	-0,1	100	11280
CZ	7115	2,0	100	9407
H	5221	2,5	100	4094
PL	16298	0,9	100	17313
SK	3136	-2,3	100	3380
<b>UCTE</b>	<b>311633</b>	<b>2,6</b>		<b>319123</b>
DK <sup>6</sup>				2050
RO	6228	n.a.	100	6027
BG	3972	n.a.	100	3879
West-UA	505	n.a.	100	859

<sup>1</sup> Percentage as referred to total values in %

<sup>2</sup> Variation as compared to corresponding month of the previous year

<sup>3</sup> Including autoproduction

<sup>4</sup> The representativity of data referring to the whole country, including the systems of the Greek islands, is 93%. The representativity of data to the interconnected system is 99%.

<sup>5</sup> Values estimated on the basis of former data from the German Federal Office for Statistics

<sup>6</sup> Denmark (Jutland)



## Contact

Boulevard Saint-Michel, 15  
B-1040 Brussels - Belgium  
Tel +3227416940 - Fax +3227416949

[info@ucte.org](mailto:info@ucte.org)  
[www.ucte.org](http://www.ucte.org)