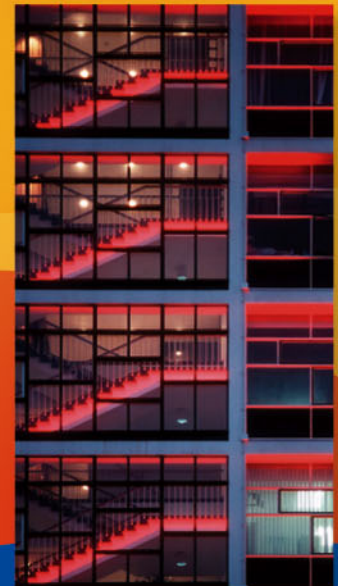
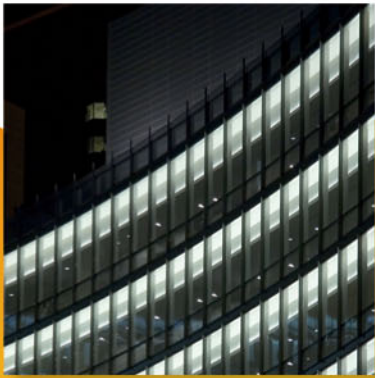


UCTE



May 2006

Monthly provisional values
union for the co-ordination of transmission of electricity

Table of contents		Page
1	Electricity supply situation of the countries	2
2	Physical energy flows	3
3	Monthly consumption	4
4	Monthly consumption variation	6
5	Consumption of the last 12 months	8
6	Variation of the last 12 months' consumption	10
7	Load flows (night)	12
8	Load flows (day)	13
9	Unavailability of international tie lines (major events)	14
10	Network reliability (major events)	16
11	Scheduled exchanges	17
12	Load on the 3 rd Wednesday	18

General remarks and abbreviations used in the tables

- All values of production and consumption in chapter 1, 3&4, 5&6 and 12 are calculated to represent 100% of the national values.
- DK_W Denmark West represents the Western part of Denmark synchronously interconnected with UCTE (Jutland and Funen).
- UA_W Ukraine West represents the so-called Burshtyn Island synchronously interconnected with UCTE.
- CET Central European Time

Countries	Net production in GWh							Exchange balance in GWh	Pump in GWh	Consumption in GWh			
	Therm. nuclear	Therm conv.	Hydro prod	Other renew.	Of which wind	Not identify	Total			monthly	var. [%]	last 12 months	var. [%]
AT	0	862	3983	0	0	759	5604 ¹	-22	342	5240	4,3	65737	2,3
BA	0	421	638	0	0	0	1059	-207	0	852	2,4	11248	3,5
BE ²	3905	2016	160	195	30	0	6276 ¹	1039	164	7151	3,2	88535	0,8
BG	1389	1392	430	0	0	0	3211	-490	35	2686	6,7	36761	4,5
CH	2376	180	3257	84	0	0	5897 ¹	-666	301	4930	2,2	63620	3,6
CS	0	1781	1369	0	0	0	3150 ¹	51	160	3041	4,4	42064	1,7
CZ	2355	3273	341	10	3	0	5979 ¹	-1050	57	4872	1,1	63846	3,3
DE	11702	25764	2476	4007	3008	0	43949 ¹	74	657	43366	0,3	558361	0,6
ES	4330	11876	2375	2042	1593	0	20623 ¹	22	328	20791	5,5	254981	5,5
FR	33949	1393	6702	468	163	0	42512	-7220	702	34590	-2,1	485041	1,0
GR	0	3403	643	94	88	0	4140 ¹	190	49	4281	5,1	53425	2,8
HR	0	296	662	1	0	0	959 ¹	334	20	1273	3,8	16786	4,1
HU ³	960	1591	0	0	0	0	2551 ¹	699	0	3250	4,5	39944	3,7
IT	0	18521	4512	662	256	0	23695 ¹	4340	741	27294	0,9	331973	1,3
LU	0	267	86	12	6	0	365	289	104	550	9,6	6492	4,4
MK	0	283	188	0	0	0	471 ¹	129	0	600	6,8	8326	8,7
NL	333	6093	0	659	257	0	7085 ¹	2150	0	9235	2,0	115566	3,2
PL	0	10862	237	31	23	0	11130 ¹	-725	66	10339	3,6	133492	2,9
PT	0	2431	675	308	176	0	3414 ¹	544	51	4062	4,3	50562	3,8
RO	489	2145	1842	0	0	0	4476 ¹	-278	39	4159	2,6	51781	0,0
SI	253	373	454	0	0	0	1080	-13	0	1067	2,2	12954	-1,4
SK	1252	312	545	1	0	213	2323 ¹	-198	15	2110	3,9	26664	1,7
UCTE	63293	95535	31575	8574	5603	972	199949¹	-1008	3831	195739	1,6	2518159	2,0
DK_W	0	1274	2	565	456	0	1841 ¹	-141	0	1700	1,9	21615	2,2
UA_W	0	667	18	0	0	0	685 ¹	-378	0	307	-3,2	4330	-2,5

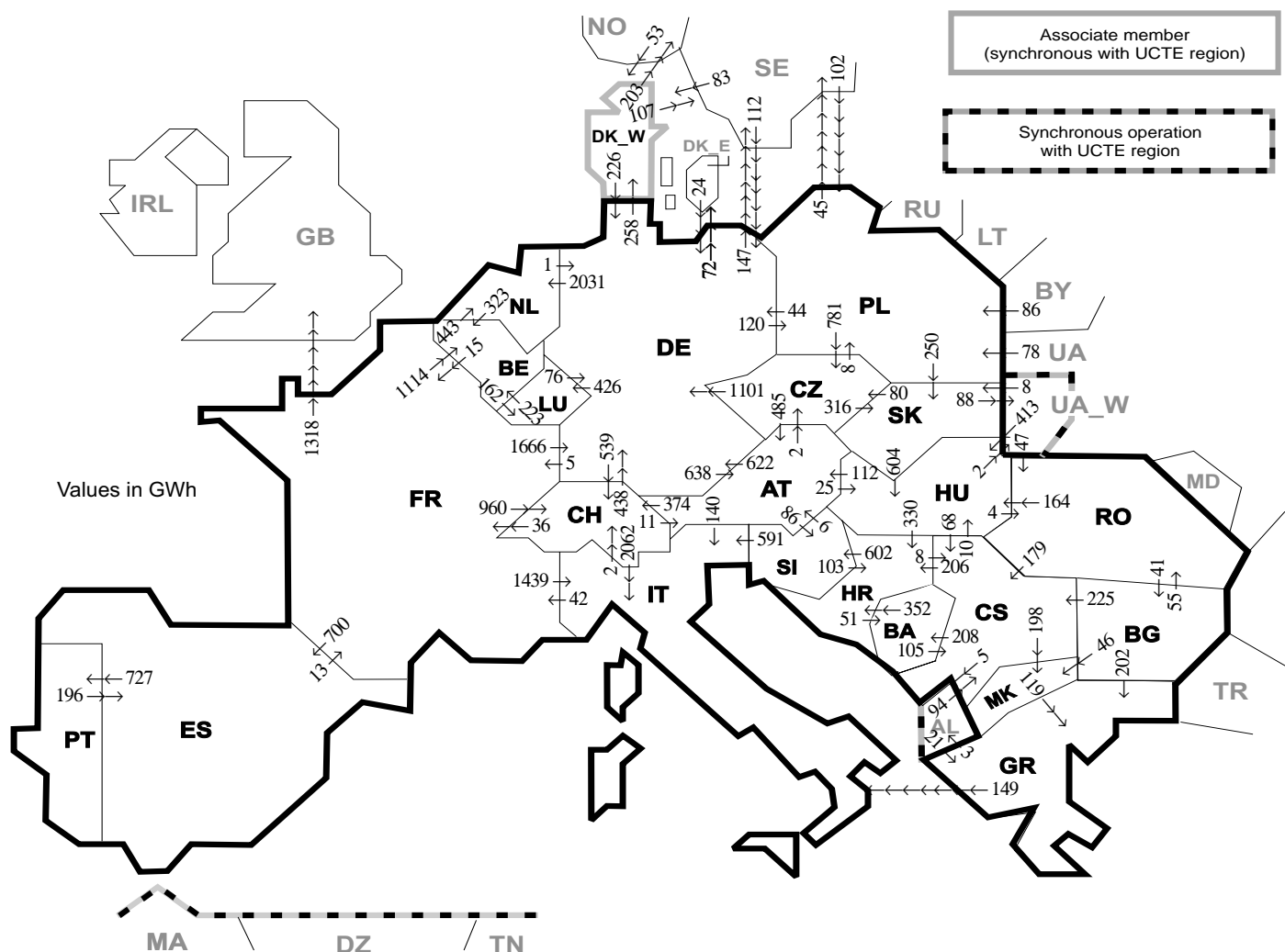
¹ Including deliveries from industry

² The reported figures are best estimates based on actual measurements and extrapolations.

³ Data on hydro, other renewable, not clearly identifiable production are not yet available.

All representativities of the national production and consumption values used to calculate values at a representativity of 100% as stated in the table above

Countries	AT	BA	BE	BG	CH	CS	CZ	DE	ES	FR	GR	HR	HU	IT	LU	MK	NL	PL	PT	RO	SI	SK	DK_W	UA_W
Production																								
Therm.nuclear	100	100	100	100	100	100	100	100	100	100	100	100	100	100	100	100	100	100	100	100	100	100	100	100
Thermal conv.	100	100	100	100	100	100	100	100	97	100	100	100	100	100	100	100	100	94	100	100	100	100	100	100
Hydro prod	100	100	100	100	100	100	100	100	100	100	100	100	100	100	100	100	100	100	100	100	100	100	100	100
Other renew.	100	100	100	100	100	100	100	100	95	100	100	100	100	100	100	100	100	100	100	100	100	100	100	100
Not identify	100	100	100	100	100	100	100	100	100	100	100	100	100	100	100	100	100	100	100	100	100	100	100	100
Consumption	100	100	100	100	100	100	100	100	98	100	100	100	100	100	100	100	100	96	100	95	100	100	100	100



Exporting countries	Importing countries																				Sum export						
	AT	BA	BE	BG	CH	CS	CZ	DE	ES	FR	GR	HR	HU	IT	LU	MK	NL	PL	PT	RO		SI	SK	DK_W	UA_W	Other III ¹	
AT	-	-	-	-	374	-	2	622	-	-	-	25	140	-	-	-	-	-	-	-	86	-	-	-	-	-	1249
BA	-	-	-	-	-	105	-	-	-	-	-	352	-	-	-	-	-	-	-	-	-	-	-	-	-	-	457
BE	-	-	-	-	-	-	-	-	-	15	-	-	-	-	162	-	443	-	-	-	-	-	-	-	-	-	620
BG	-	-	-	-	-	225	-	-	-	-	202	-	-	-	46	-	-	-	-	55	-	-	-	-	-	0	528
CH	11	-	-	-	-	-	-	438	-	36	-	-	2062	-	-	-	-	-	-	-	-	-	-	-	-	2547	
CS	-	208	-	0	-	-	-	-	-	-	-	206	10	-	198	-	-	-	-	0	-	-	-	-	-	5	627
CZ	485	-	-	-	-	-	-	1101	-	-	-	-	-	-	-	-	-	8	-	-	-	316	-	-	-	1910	
DE	638	-	-	-	539	-	0	-	-	5	-	-	-	426	-	2031	120	-	-	-	-	-	258	-	219	4236	
ES	-	-	-	-	-	-	-	-	-	13	-	-	-	-	-	-	-	-	727	-	-	-	-	-	-	0	740
FR	-	-	1114	-	960	-	-	1666	700	-	-	-	1439	-	-	-	-	-	-	-	-	-	-	-	1318	7197	
GR	-	-	-	0	-	-	-	-	-	-	-	-	149	-	0	-	-	-	-	-	-	-	-	-	-	3	152
HR	-	51	-	-	-	-	-	8	-	-	-	-	0	-	-	-	-	-	-	-	602	-	-	-	-	661	
HU	112	-	-	-	-	68	-	-	-	-	-	330	-	-	-	-	-	-	-	4	0	0	2	-	-	516	
IT	0	-	-	-	2	-	-	-	-	42	0	-	-	-	-	-	-	-	-	-	0	-	-	-	-	44	
LU	-	-	223	-	-	-	-	76	-	-	-	-	-	-	-	-	-	-	-	-	-	-	-	-	-	299	
MK	-	-	-	0	-	0	-	-	-	-	119	-	-	-	-	-	-	-	-	-	-	-	-	-	-	119	
NL	-	-	323	-	-	-	-	1	-	-	-	-	-	-	-	-	-	-	-	-	-	-	-	-	-	324	
PL	-	-	-	-	-	-	781	44	-	-	-	-	-	-	-	-	-	-	-	-	250	-	-	-	45	1120	
PT	-	-	-	-	-	-	-	-	196	-	-	-	-	-	-	-	-	-	-	-	-	-	-	-	-	196	
RO	-	-	-	41	-	179	-	-	-	-	-	-	164	-	-	-	-	-	-	-	-	-	-	0	0	384	
SI	6	-	-	-	-	-	-	-	-	-	-	103	591	-	-	-	-	-	-	-	-	-	-	-	-	700	
SK	-	-	-	-	-	80	-	-	-	-	-	604	-	-	-	-	0	-	-	-	-	-	-	88	-	772	
DK_W	-	-	-	-	-	-	226	-	-	-	-	-	-	-	-	-	-	-	-	-	-	-	-	-	310	536	
UA_W	-	-	-	-	-	-	-	-	-	-	-	413	-	-	-	-	-	-	-	47	8	-	-	-	-	468	
Other III ¹	-	-	-	0	-	94	-	136	0	0	21	-	-	-	-	-	266	-	0	-	136	-	-	-	-	653	
Sum imp	1252	259	1660	41	1875	679	863	4310	896	111	342	991	1216	4381	588	244	2474	394	727	106	688	574	341	90	1900	27055	

Sum of physical energy flows between UCTE countries = 23460GWh Total physical energy flows = 27055GWh

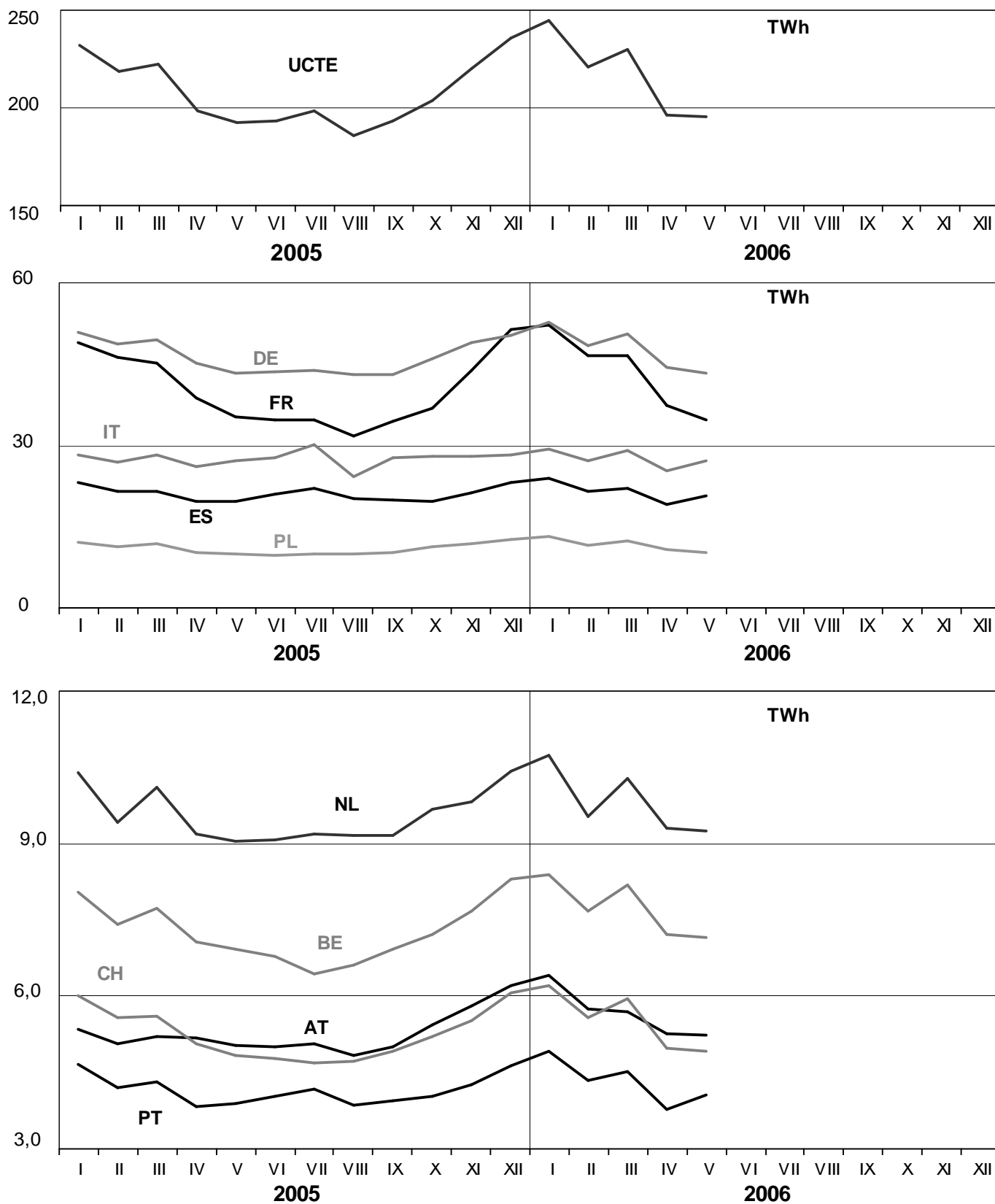
¹ Other III: Albania, Belarus, Denmark East, Great Britain, Morocco, Republic of Moldavia, Norway, Sweden, Republic of Turkey and Ukraina

These physical energy flows were measured on the cross-frontier transmission lines (≤ 110 kV) listed in table 9 of the Statistical Yearbook. These values may differ from the official statistics and the exchange balances in chapter 1.

3

Monthly consumption

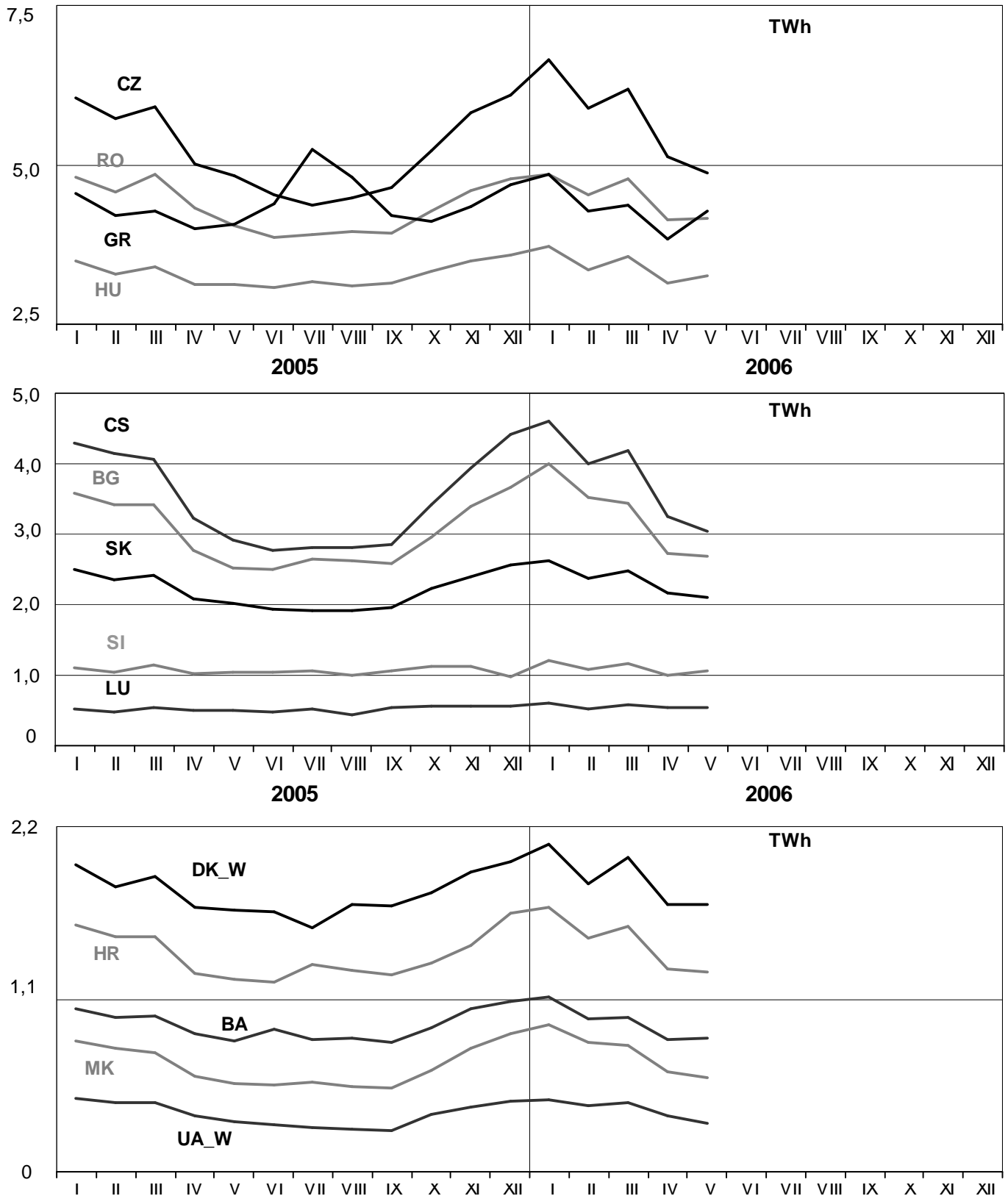
May 2006



3

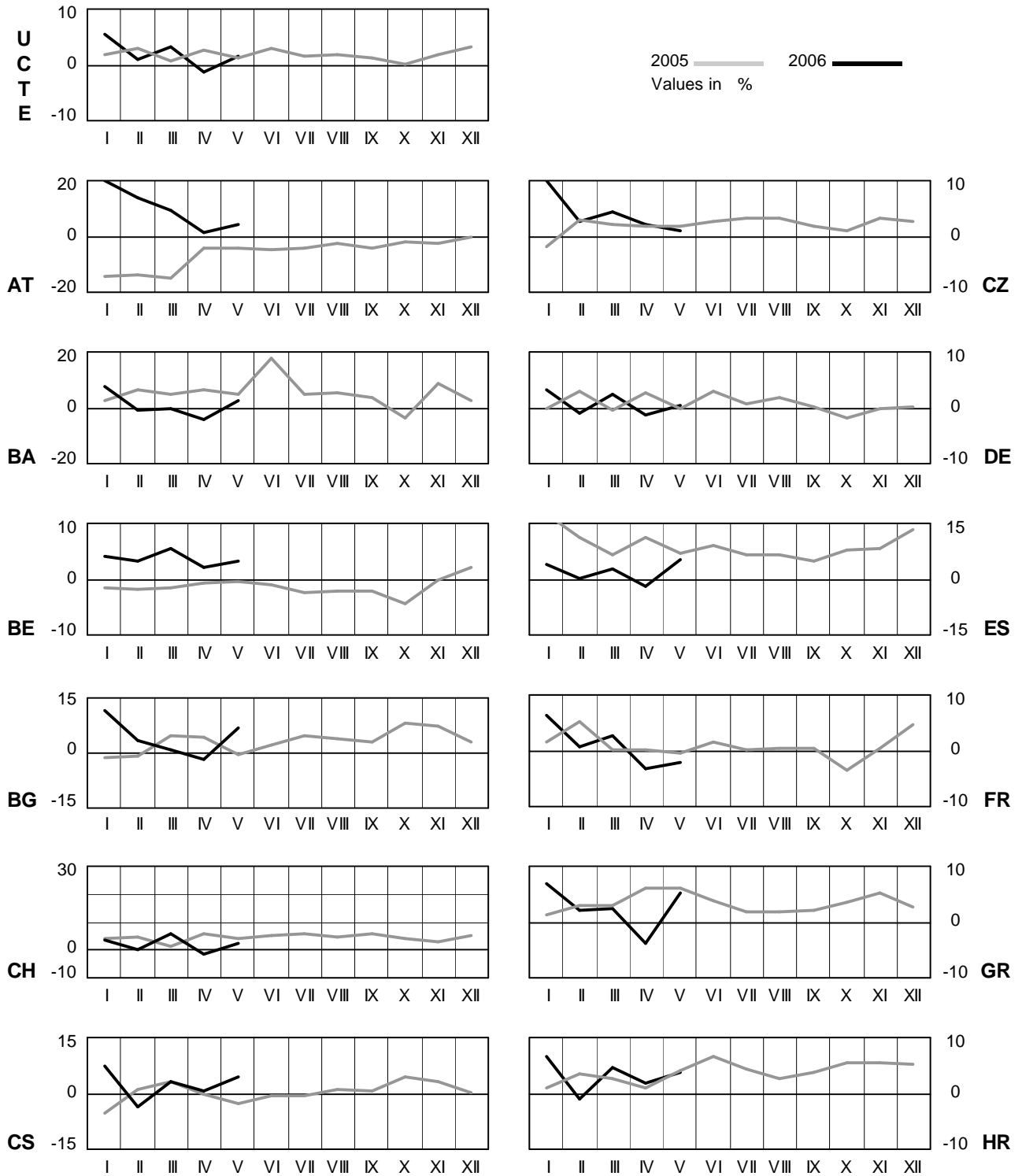
Monthly consumption

May 2006



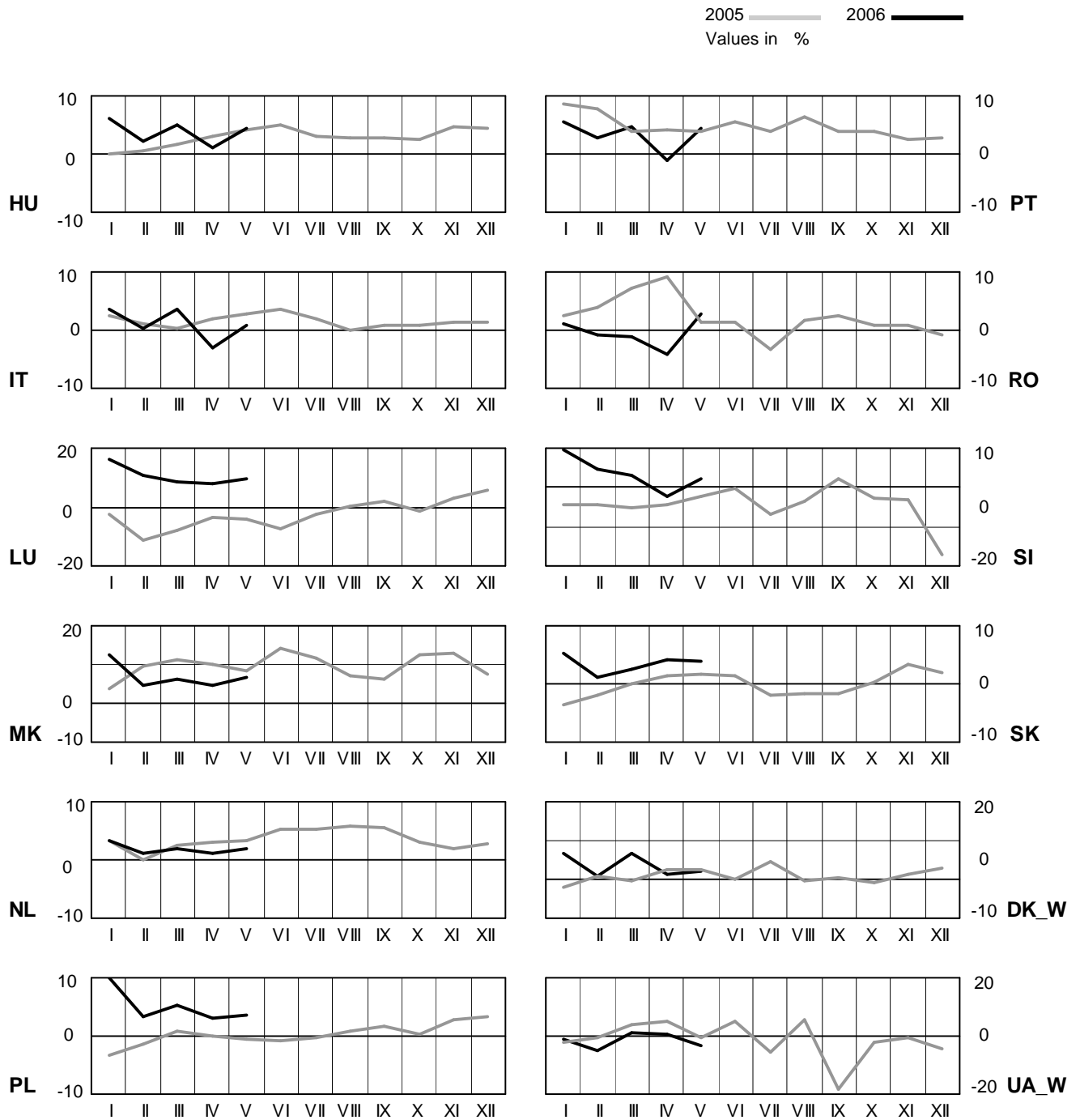
4 Monthly consumption variation

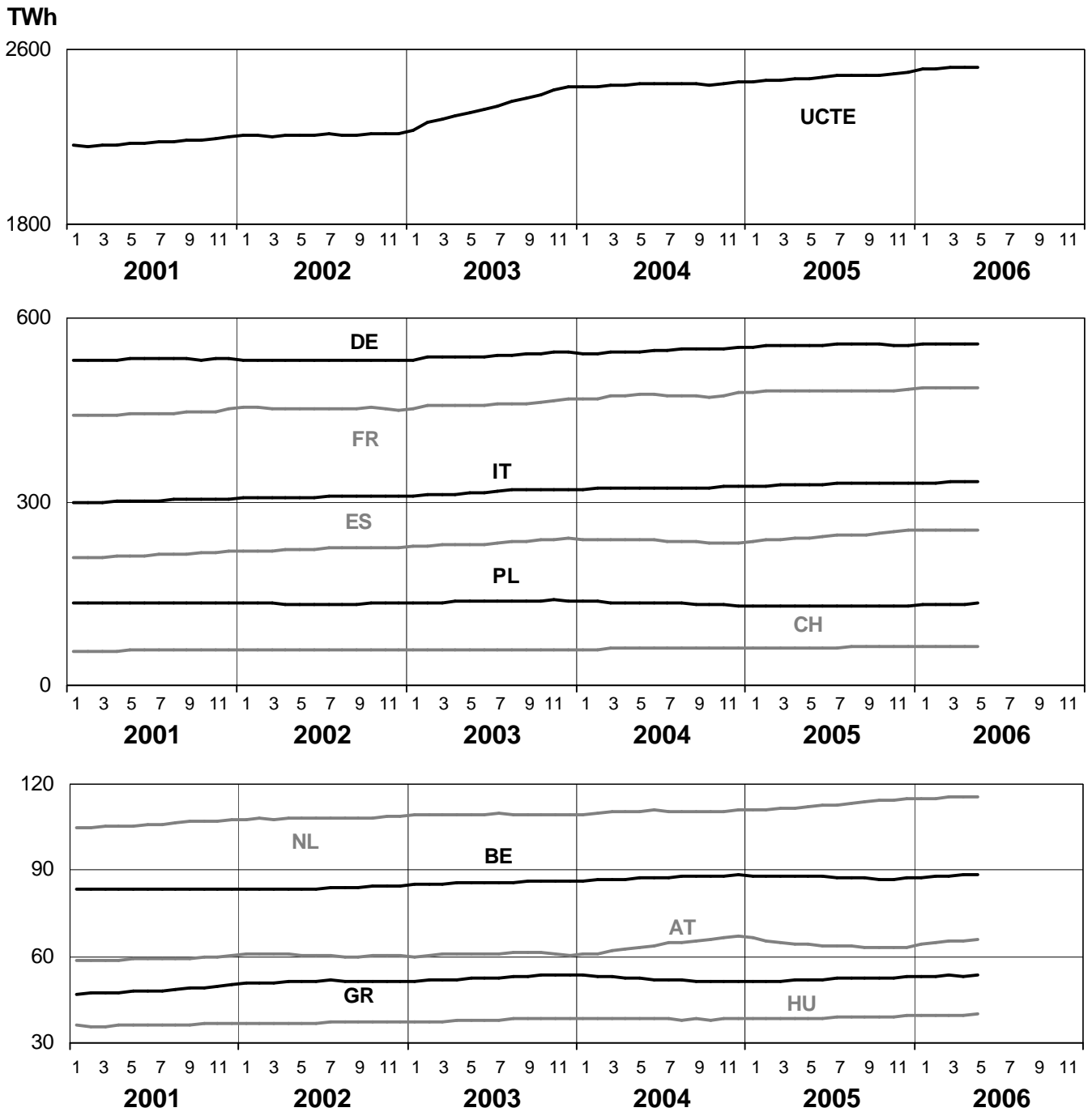
May 2006



4 Monthly consumption variation

May 2006

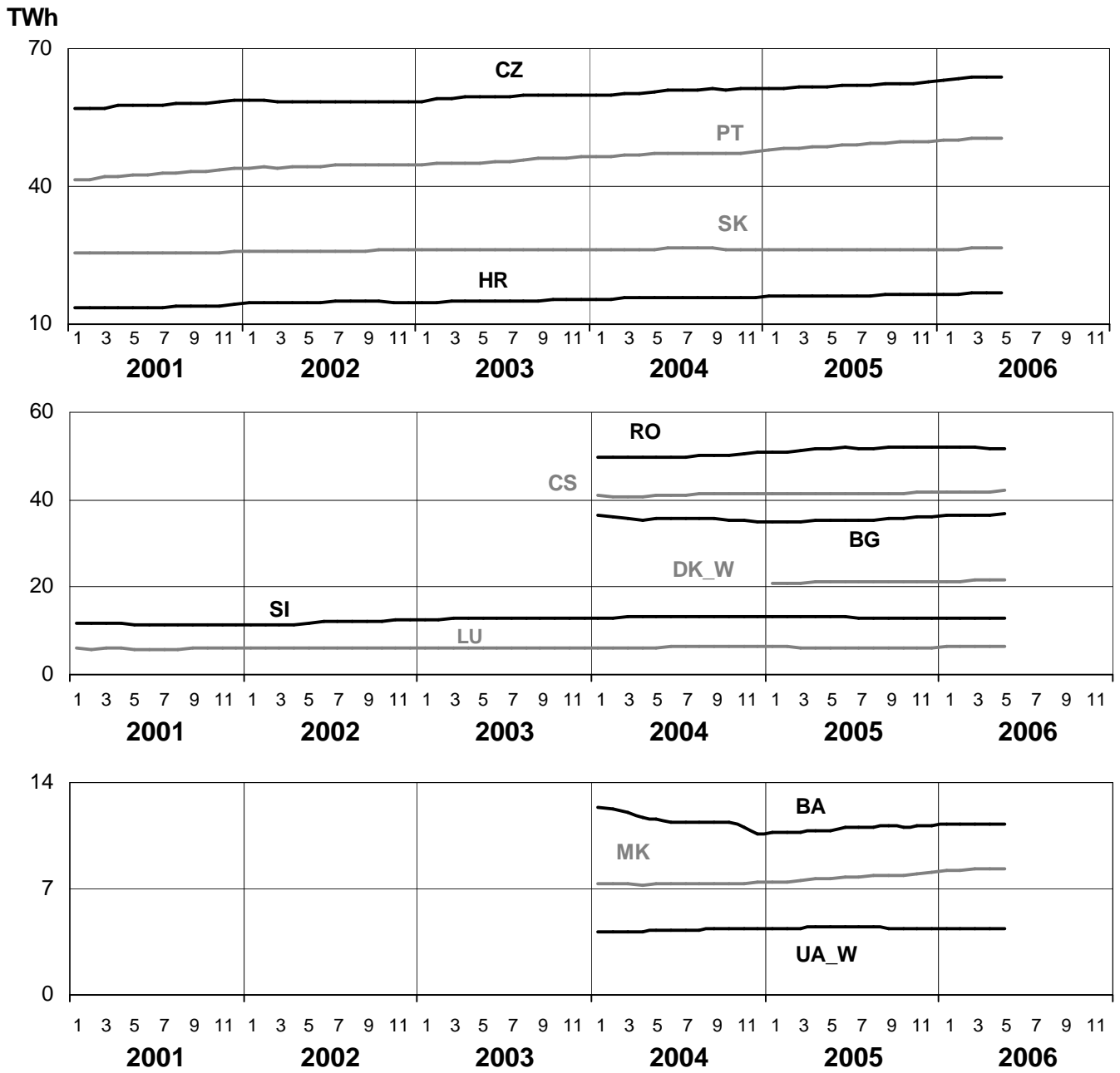




5

Consumption of the last 12 months

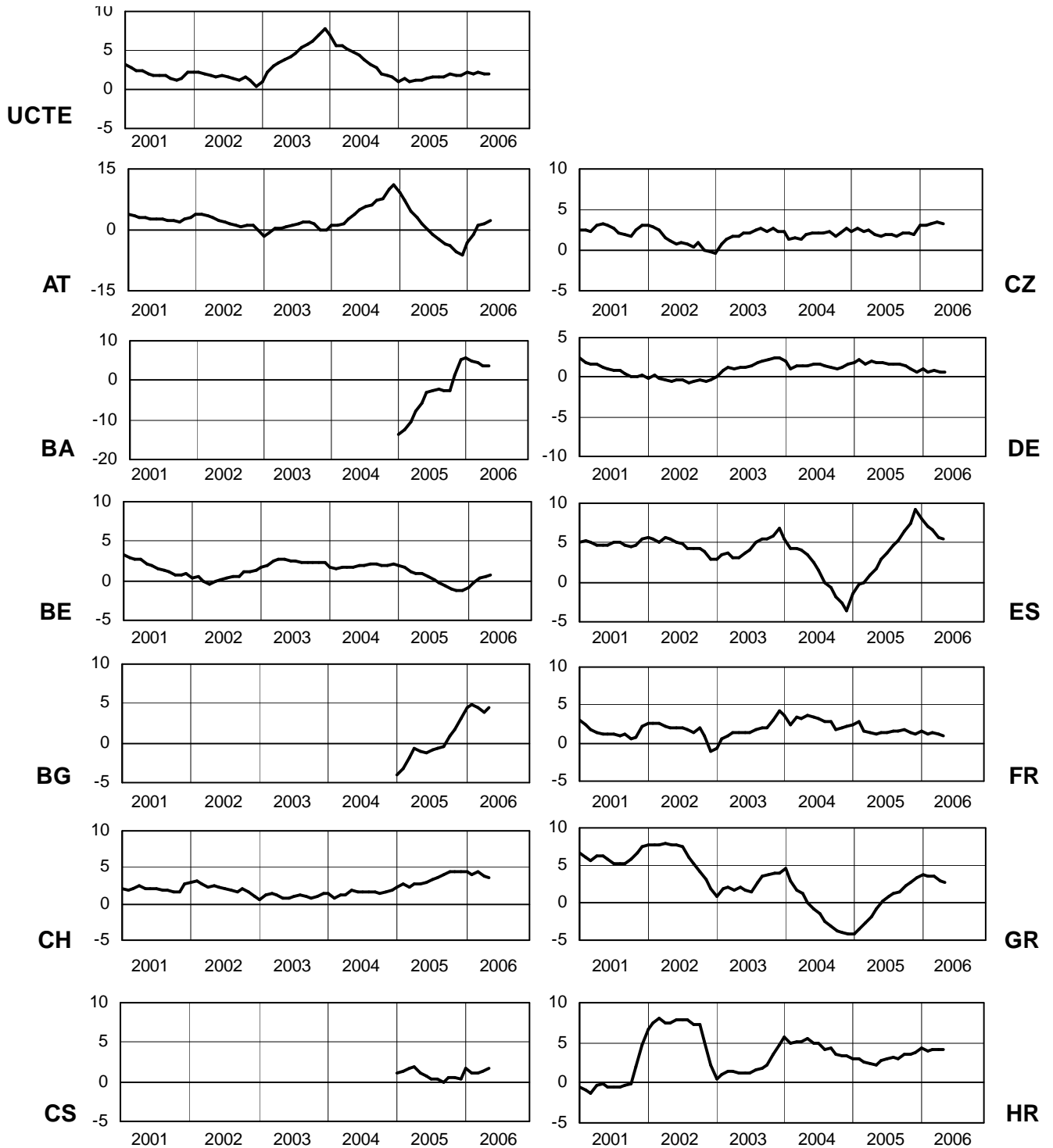
May 2006



6

Variation of the last 12 months' consumption in %

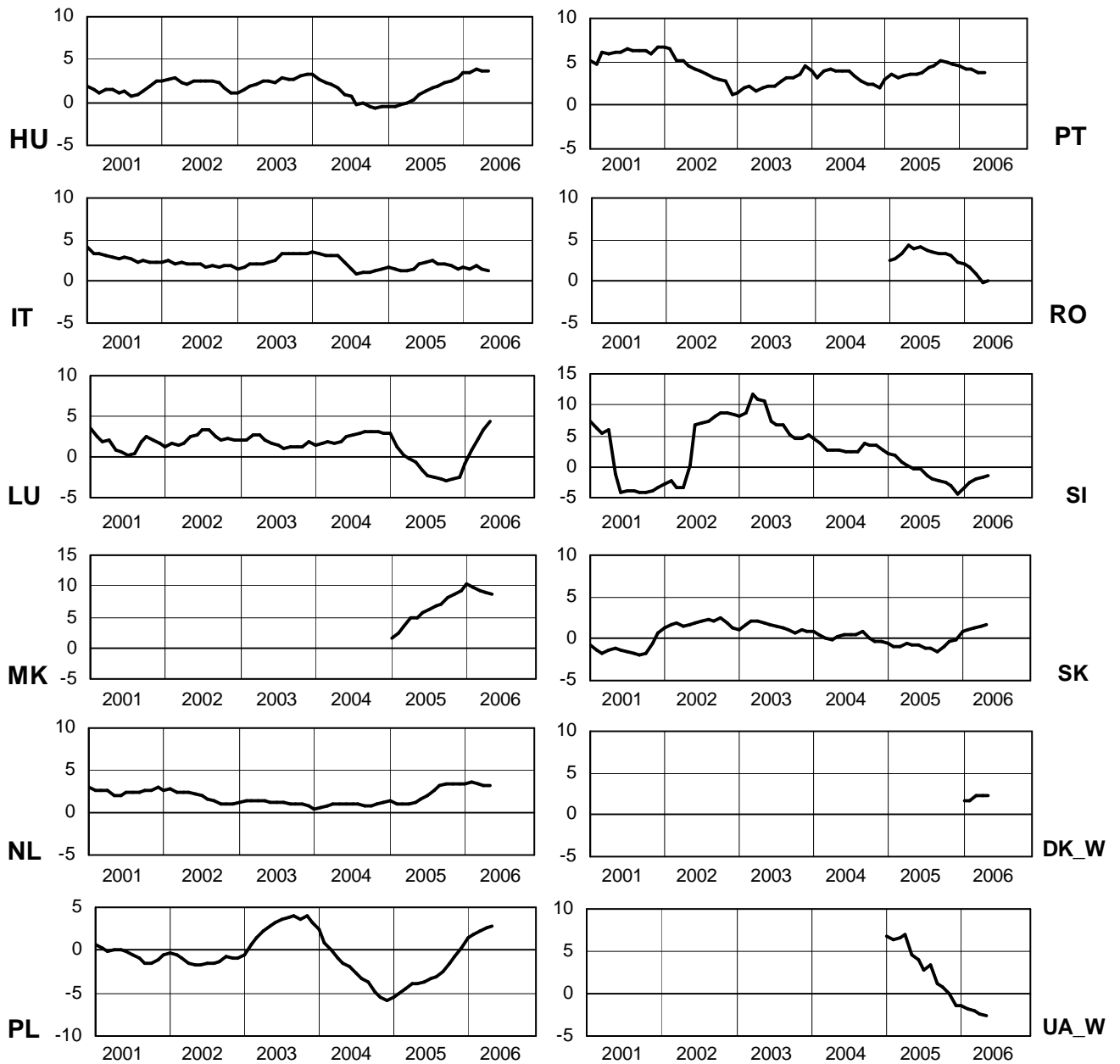
May 2006

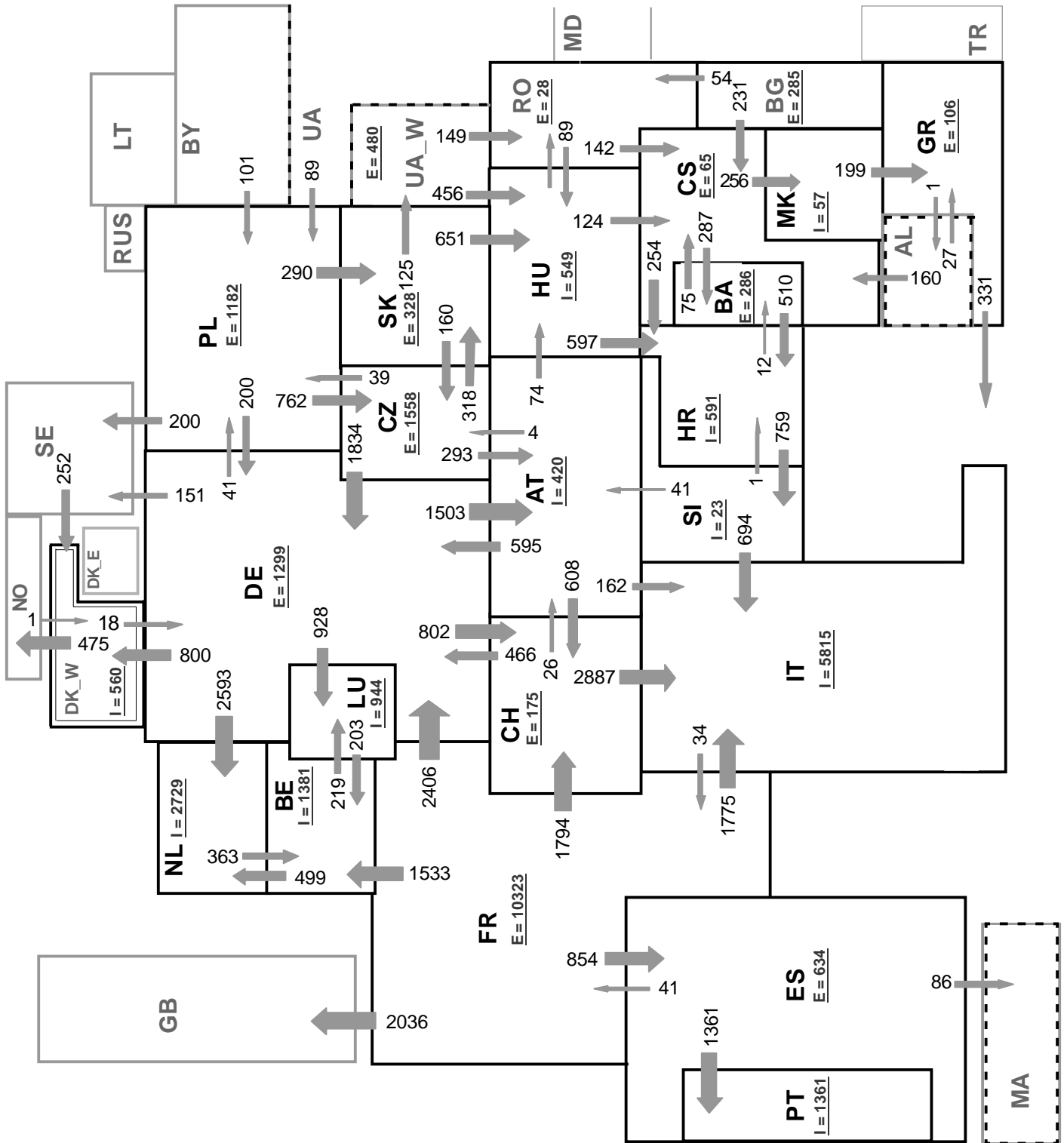


6

Variation of the last 12 months' consumption in %

May 2006





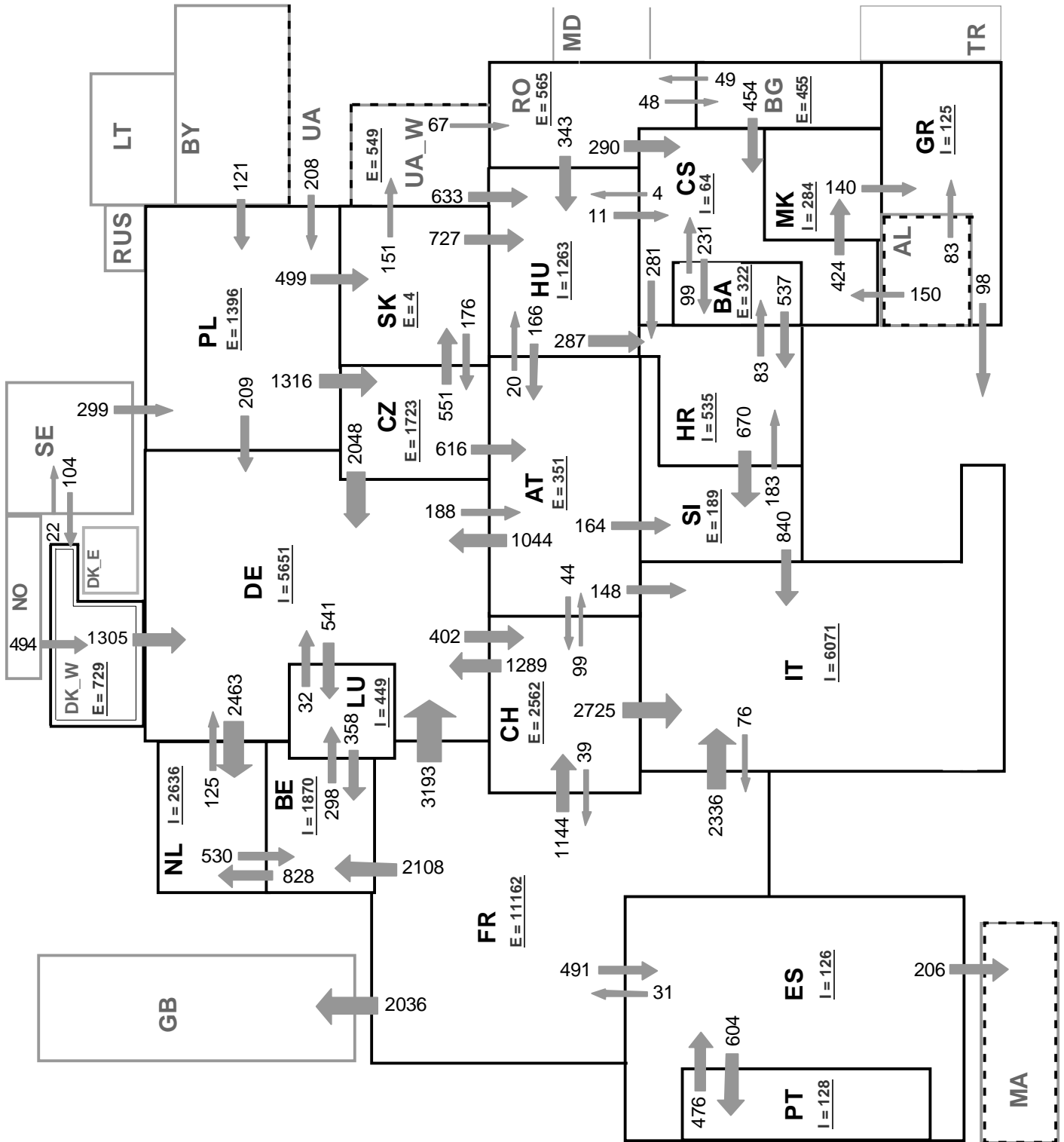
Associate member

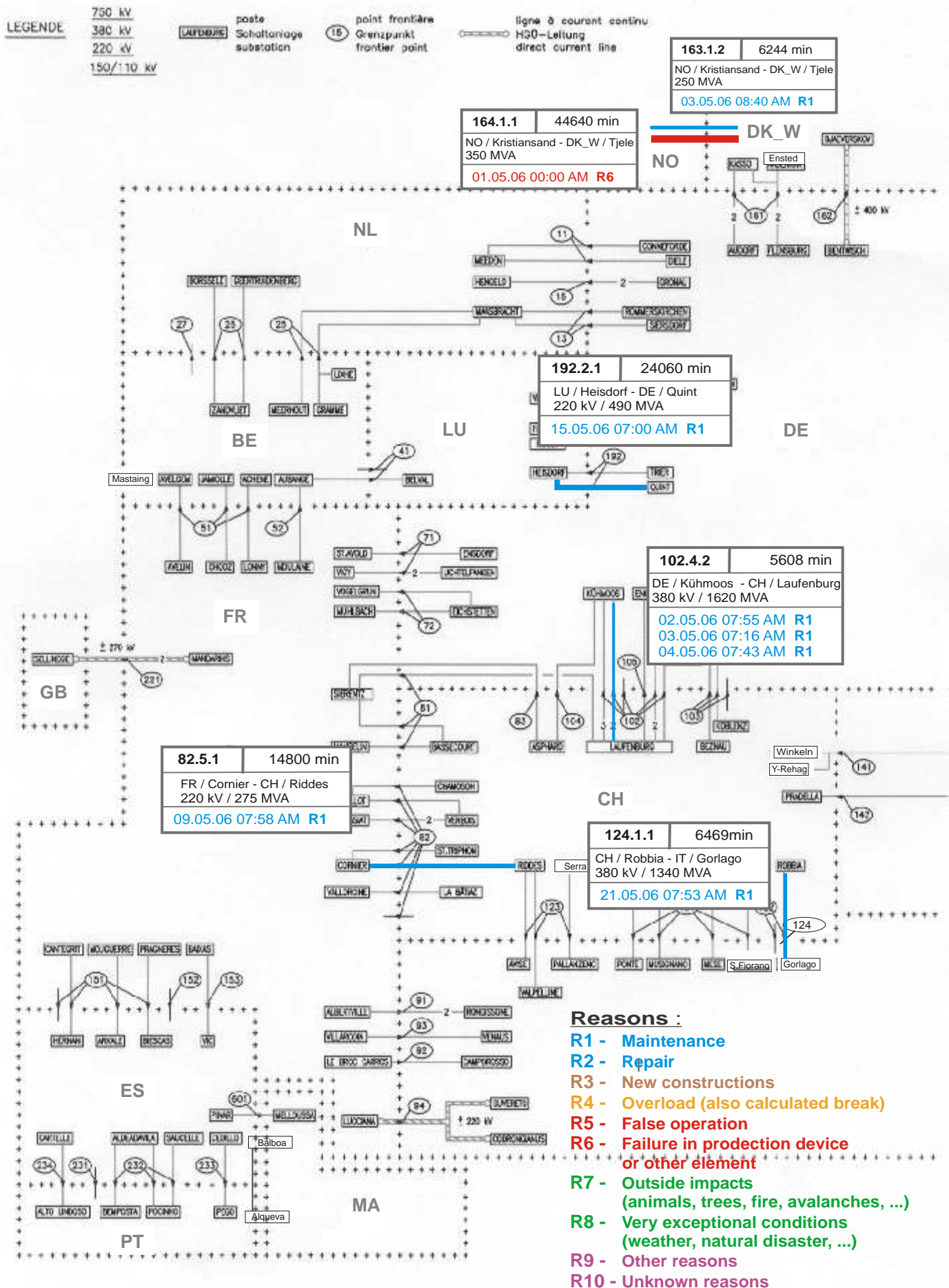
Synchronous operation with UCTE region

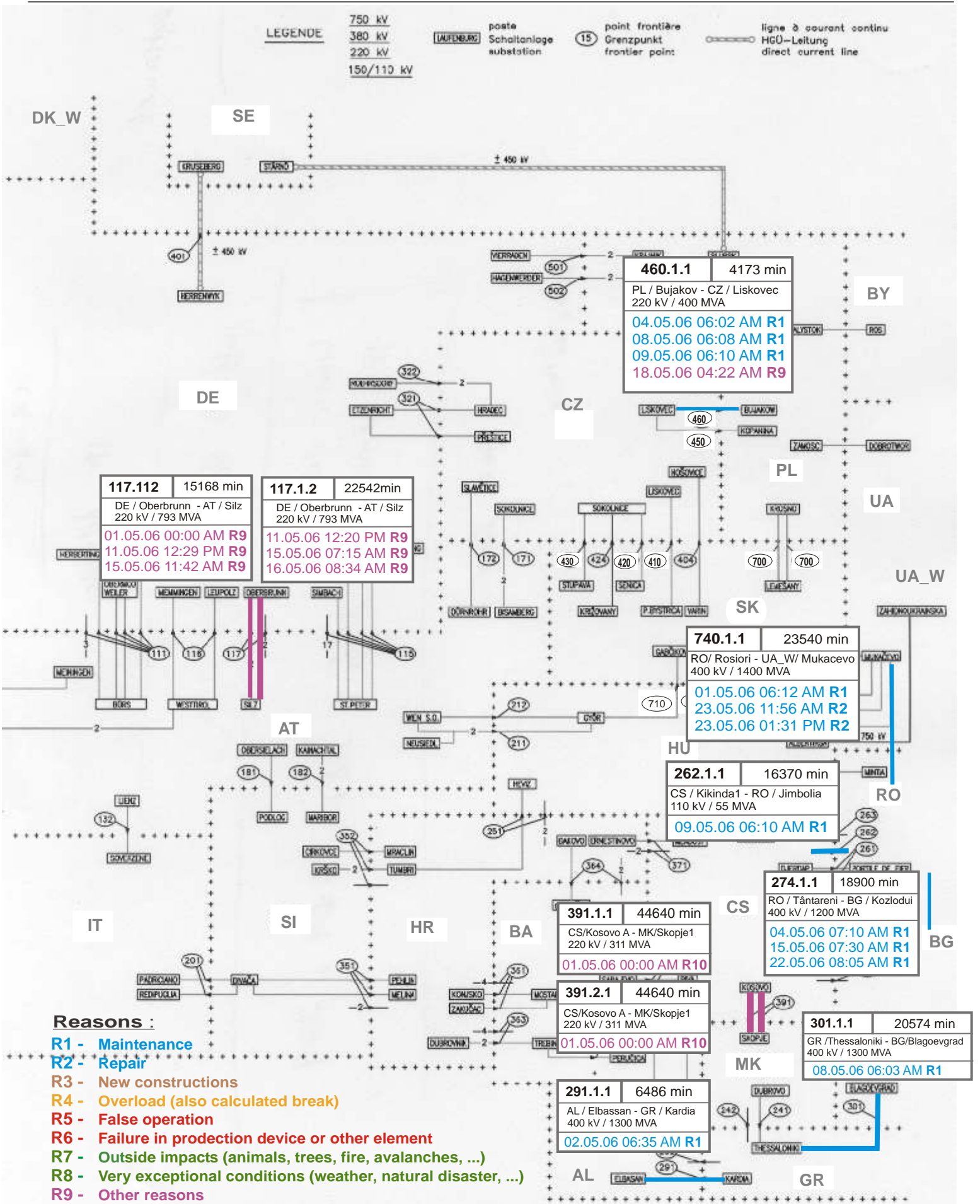
Sum of load flows in MW:

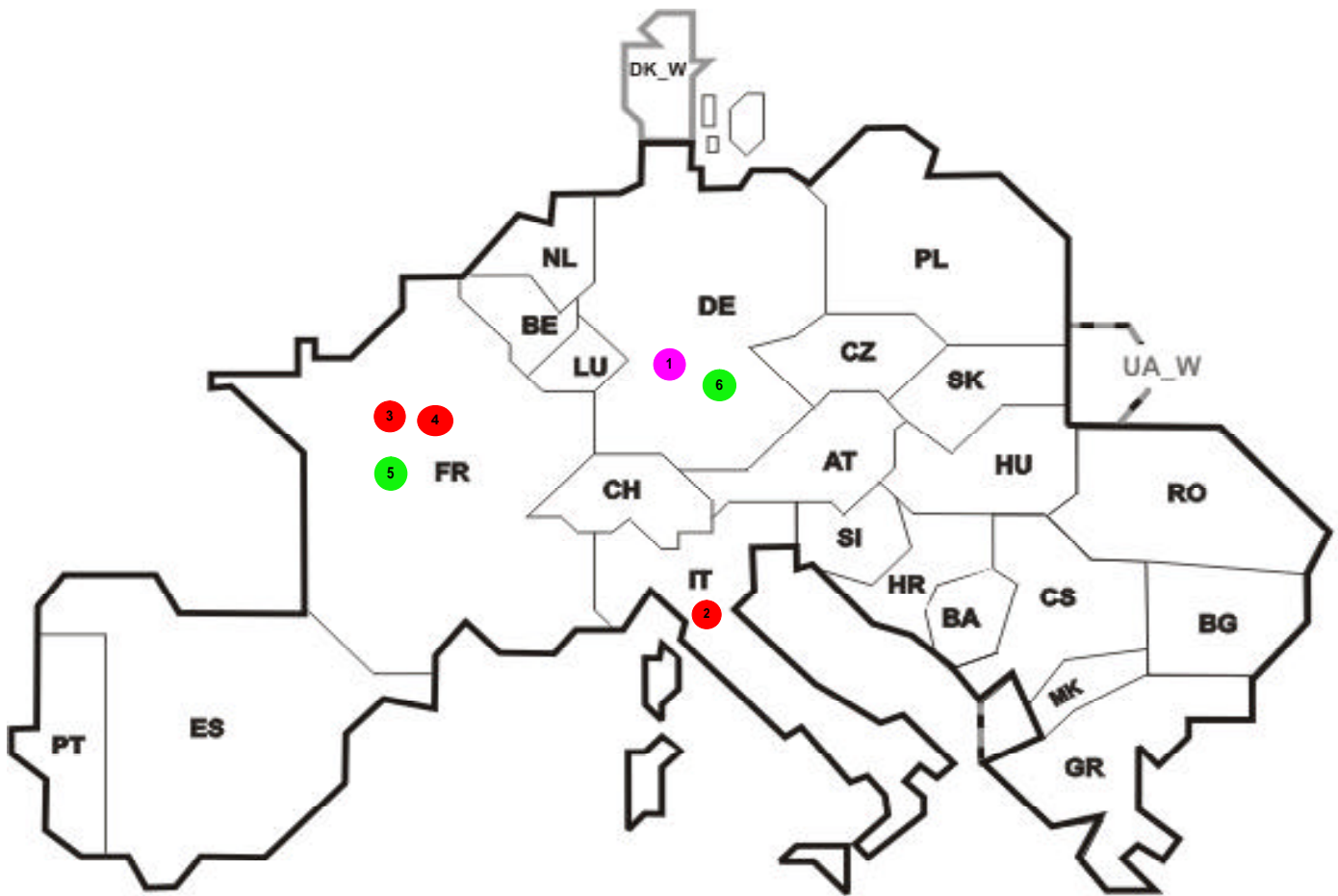
UCTE = 30974 MW
Total = 36101 MW

I = Import balance
E = Export balance









Reasons:

R4 Overload (also calculated break)

R5 False operation

R6 Failure in protection device or other element

R7 Outside impacts (animals, trees, fire, avalanches, ...)
(animals, trees, fire, avalanches, ...)

R8 Very exceptional conditions
(weather, natural disaster, ...)

R9 Other reasons

R10 Unknown reasons

No	Country	Substation	Reason	Energy not supplied [MWh]	Total loss of power [MW]	Restoration time [min]	Equivalent time of interruption ¹
1	DE	Frimmersdorf	R10	398	135	177	0,375
2	IT	La Spezia	R6	8	83	6	0,013
3	FR	Plessis Gassot	R5	3	29	7	0,004
4	FR	Chevilly	R6	3	45	4	0,003
5	FR	Crenay	R8	0	4	6	0,0004
6	DE	Etz	R8	0	0	0	0

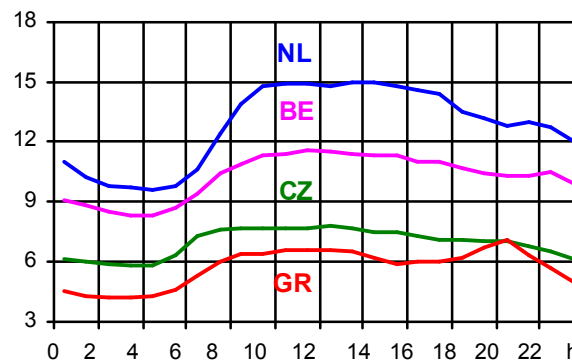
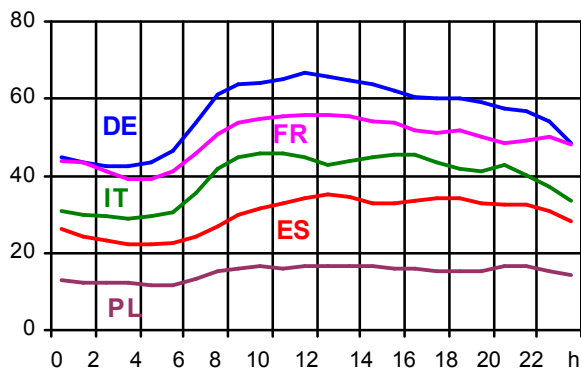
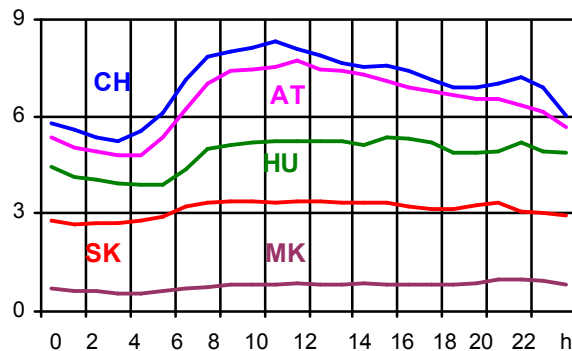
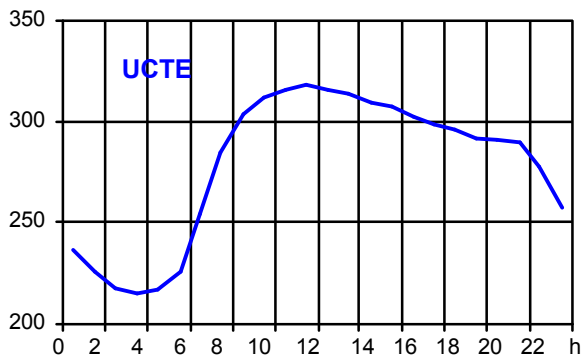
¹ (year [in min] * energy not supply) / consumption last 12 months

Control area	Export Programs	Import Programs	Export Programs at 03:00	Import Programs at 03:00	Export Programs at 11:00	Import Programs at 11:00
AT	643397	613399	618	767	1189	1478
BA	298909	95664	418	135	420	100
BE	628825	1605039	750	2136	463	2250
BG	n.a.	n.a.	n.a.	n.a.	n.a.	n.a.
CH	2608623	1942102	3165	3167	5770	3176
CS	415987	462631	474	412	808	775
CZ	1610618	506830	2288	649	2729	959
DE	2069033	2628514	2378	3275	2203	6993
ES	n.a.	n.a.	n.a.	n.a.	n.a.	n.a.
FR	8512329	1438242	11472	1184	11462	360
GR	151412	341589	355	234	99	214
HR	327377	662732	377	955	481	1018
HU	434804	1132511	627	1174	646	1898
IT	34	5842	76	6146	49350	4378668
MK	500	128800	80	169	55	243
NL	271397	2417148	447	3191	606	3249
PL	923182	217233	1213	92	1880	515
PT	117399	660606	0	1391	590	722
RO	416139	138688	281	194	790	200
SI	546231	533474	764	787	927	736
SK	635158	386259	664	285	982	895
DK_W	506186	404466	470	1046	1200	645
UA_W	373688	0	473	0	549	0

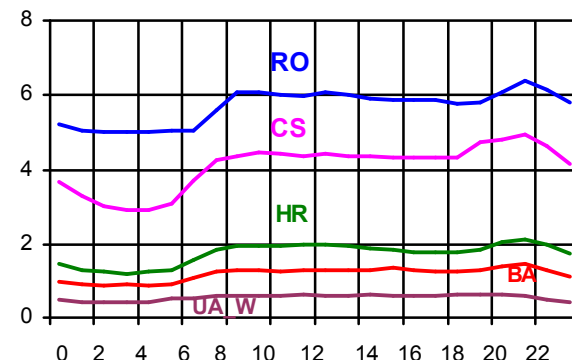
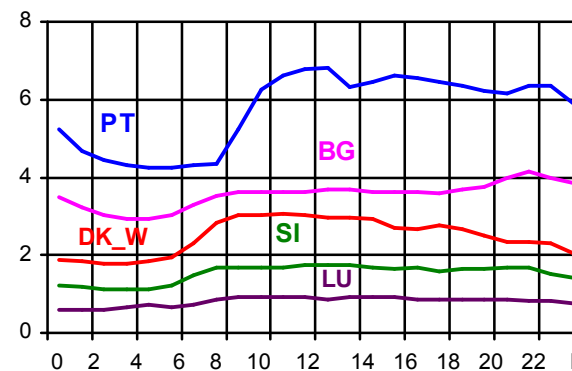
- Control areas can differ from national borders (i.e. German block which includes parts of AT, LU and DK).
- Values are calculated on an hourly base (MWh).
- This values are not the provisional values entered in the VULCANUS system, but the definitive values after an eventual correction during the actual date.
- Export Programs: Sum of all positive values of every hour of every border
- Import Programs: Sum of all negative values of every hour of every border
- Export Programs at 03:00: Sum of all positive values the third Wednesday from 02:00 to 03:00 a.m.
- Import Programs at 03:00: Sum of all negative values the third Wednesday from 02:00 to 03:00 a.m.
- Export Programs at 11:00: Sum of all positive values the third Wednesday from 10:00 to 11:00 a.m.
- Import Programs at 11:00: Sum of all negative values the third Wednesday from 10:00 to 11:00 a.m.

Consumption hourly load curves on 17.05.2006

Values in GW



	Highest load		Load representativity %	Parallel power ² MW
	MW	var.% ¹		
AT	7688	-1,2	100	7875
BA	1432	1,9	100	1582
BE ³	11640	1,6	100	9653
BG	4136	1,2	100	4106
CH	8351	-3,1	100	11184
CS	4948	3,1	100	4327
CZ	7802	-2,7	100	9630
DE	73209	-2,3	91	71600
ES	35562	11,5	98	33158
FR	55896	-3,3	100	66770
GR	7081	-1,7	100	6426
HR	2106	4,1	100	1560
HU	5379	-0,1	100	3987
IT	46176	0,1	100	39168
LU	939	84,1	100	917
MK	974	8,1	100	550
NL	15008	1,6	100	12282
PL ⁴	16586	-0,9	100	22677
PT	7093	6,3	96	6468
RO	6372	2,4	100	6618
SI	1822	-1,5	95	1880
SK	3389	0,1	100	3368
UCTE	318686	2,6		325786
DK_W	3057	-0,8	100	3734
UA_W	640	-0,6	100	1154



¹ Variation as compared to corresponding month of the previous year
² Power produced in parallel operation (including autoproduction)
³ The reported figures are best estimates based on actual measurements and extrapolations.
⁴ Average value of each hour



Contact

Boulevard Saint-Michel, 15
B-1040 Brussels – Belgium
Tel +32 2 741 69 40 – Fax +32 2 741 69 49

info@ucte.org
www.ucte.org