

UCTE



May 2005

Monthly provisional values
union for the co-ordination of transmission of electricity

Table of contents ¹		Page
1	Electricity supply situation of the countries	2
2	Physical energy flows	3
3	Monthly consumption	4
4	Monthly consumption variation	6
5	Consumption of the last 12 months	8
6	Variation of the last 12 months' consumption	9
7	Load flows (night)	10
8	Load flows (day)	11
9	Unavailability of international tie lines (major events)	12
10	Network reliability (major events)	14
11	Scheduled exchanges	15
12	Load on the 3 rd Wednesday	16

¹ Monthly provisional values from the UCTE database as of 7 September 2005

All values are calculated to represent 100% of the national values

Countries	Net production in GWh							Exchange balance in GWh	Pump in GWh	Consumption in GWh			
	Therm. nuclear	Fossil fuel	Hydro prod	Other renew.	Of which wind	Not identify	Total			monthly	var. [%]	last 12 months	var. [%]
AT	0	1169	3871	0	0	659	5699 ¹	-353	323	5023	-4,0	64274	1,7
BA	0	278	644	0	0	0	922	-90	0	832	5,1	10865	-5,8
BE	3783	2734	134	177	9	0	6828 ¹	396	143	7081	1,8	88730	1,9
BG	1416	1128	550	0	0	0	3094	-530	47	2517	-0,5	35186	-1,0
CH	1246	175	3242	74	0	0	4737 ¹	349	258	4828	0,8	62307	3,1
CS	0	1574	1481	0	0	0	3055 ¹	-19	124	2912	-2,7	41347	1,1
CZ	1730	4081	265	3	1	0	6079 ¹	-1211	50	4818	1,8	62073	2,4
DE	11350	26930	2470	2326	1615	0	43076 ¹	922	758	43240	-0,1	554962	1,9
ES	3626	11869	2681	2192	1519	0	20368 ¹	146	648	19866	0,7	245111	0,3
FR	33348	2480	6193	290	36	0	42311	-6713	553	35045	-1,3	479141	1,0
GR	0	3291	517	69	59	0	3877 ¹	268	71	4074	6,1	51985	-0,8
HR	0	313	595	2	1	0	910 ¹	326	10	1226	4,0	16125	2,3
HU	956	1479	4	0	0	0	2439 ¹	634	0	3073	2,8	38276	-0,3
IT	0	18337	4131	595	187	0	23063 ¹	4231	783	26511	2,8	323473	0,6
LU	0	259	76	9	4	0	344	253	94	503	-3,8	6224	-0,6
MK	0	292	139	0	0	0	431 ¹	131	0	562	8,5	7658	4,9
NL	327	6893	0	479	156	0	7699 ¹	1356	0	9055	3,3	111498	0,7
PL	0	10719	355	n.a.	n.a.	n.a.	11074 ¹	-986	124	9964	-0,7	129654	-3,9
PT	0	2669	364	265	115	0	3298 ¹	567	28	3837	2,5	48516	3,1
RO	487	1378	2204	0	0	0	4069 ¹	-17	0	4052	1,4	52120	4,7
SI	495	292	291	0	0	0	1078	-34	0	1044	-2,5	13132	-0,4
SK	920	453	578	1	1	202	2154 ¹	-117	6	2031	1,7	26225	-0,8
UCTE	59684	98793	30785	6482	3703	861	196605¹	-491	4020	192094	0,6	2468882	0,9
DK_W	0	1015	2	446	344	0	1463 ¹	205	0	1668	2,6	21155	n.a.
UA_W ²	0	583	20	0	0	0	603 ¹	-286	0	317	-0,6	4443	4,5

¹ Including deliveries from industry

² UA_W represents the so-called Burshtyn Island synchronously interconnected with UCTE

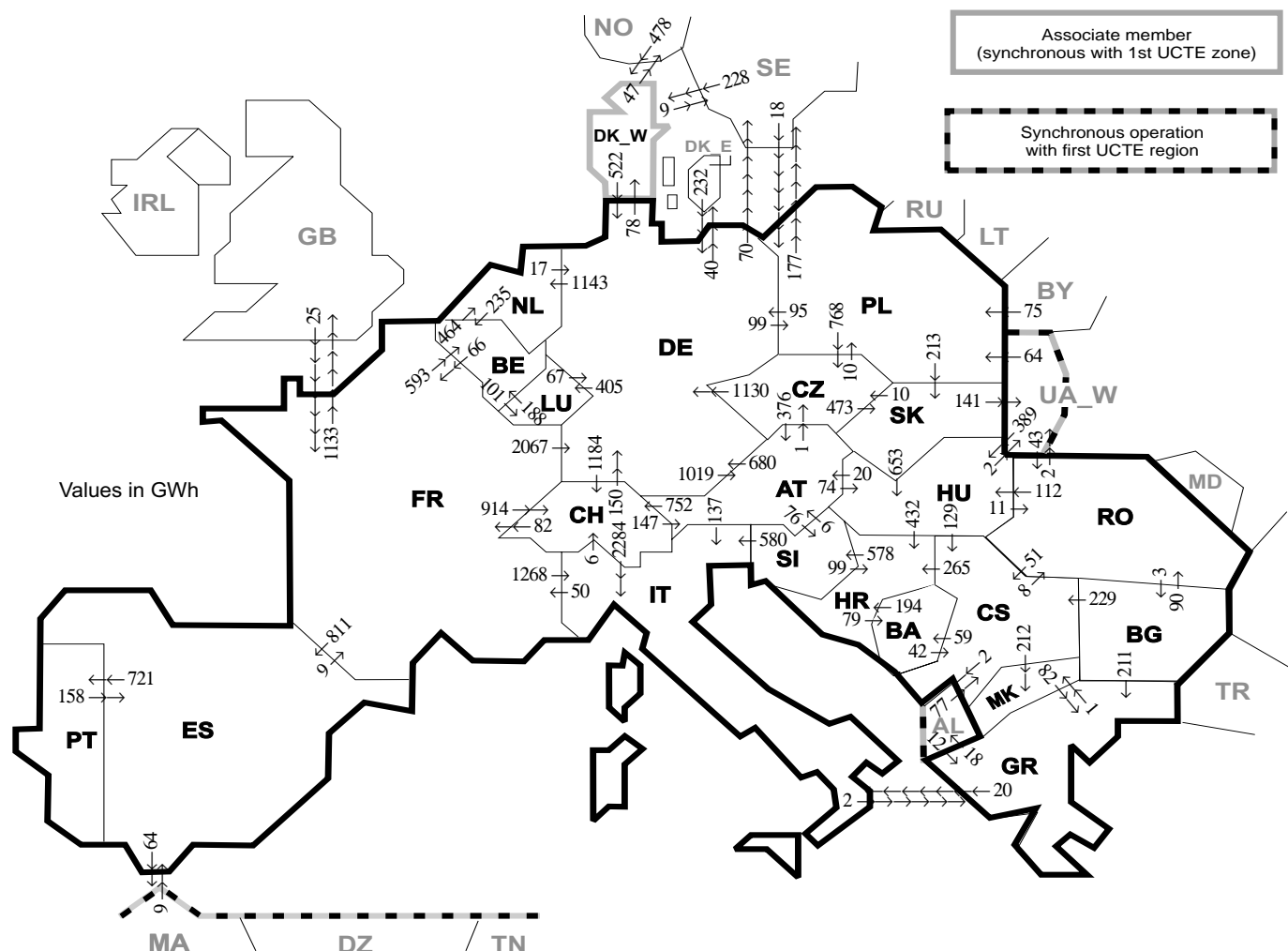
All representativities of the national production and consumption values used to calculate values at a representativity of 100% as stated in the table above

Countries	AT	BA	BE	BG	CH	CS	CZ	DE	ES	FR	GR	HR	HU	IT	LU	MK	NL	PL	PT	RO	SI	SK	DK_W	UA_W ²
Production																								
Therm.nuclear	100	100	100	100	100	100	100	100	100	100	100	100	100	100	100	100	100	100	100	100	100	100	100	100
Fossil fuel	100	100	100	100	100	100	100	100	97	100	100	100	100	100	98	100	100	100	96	100	100	100	100	100
Hydro prod	100	100	100	100	100	100	100	100	100	100	100	100	100	100	99	100	100	100	100	100	100	100	100	100
Other renew.	n.a.	100	100	100	100	100	100	100	95	100	100	100	n.a.	100	99	100	100	n.a.	100	100	100	100	100	100
Not identify	n.a.	100	100	100	100	100	100	100	100	100	100	100	n.a.	100	n.a.	100	100	n.a.	100	100	100	100	100	100
Consumption	100	100	100	100	100	100	100	100	98	100	100	100	100	100	99	100	100	100	97	100	95	100	100	100

2

Physical energy flows

May 2005



Exporting countries	Importing countries																	Sum export								
	AT	BA	BE	BG	CH	CS	CZ	DE	ES	FR	GR	HR	HU	IT	LU	MK	NL		PL	PT	RO	SI	SK	DK_W	UA_W ²	Other III ¹
AT	-	-	-	-	752	-	1	680	-	-	-	-	74	137	-	-	-	-	-	-	76	-	-	-	-	1720
BA	-	-	-	-	-	-	-	-	-	-	-	194	-	-	-	-	-	-	-	-	-	-	-	-	-	236
BE	-	-	-	-	-	-	-	-	-	66	-	-	-	-	101	-	464	-	-	-	-	-	-	-	-	631
BG	-	-	-	-	-	229	-	-	-	-	211	-	-	-	-	0	-	-	-	90	-	-	-	-	0	530
CH	147	-	-	-	-	-	-	150	82	-	-	-	-	-	-	-	-	-	-	-	-	-	-	-	-	2663
CS	-	59	-	0	-	-	-	-	-	-	-	265	0	-	-	212	-	-	-	8	-	-	-	-	2	546
CZ	376	-	-	-	-	-	-	1130	-	-	-	-	-	-	-	-	10	-	-	-	473	-	-	-	-	1989
DE	1019	-	-	-	1184	-	0	-	0	-	-	-	-	405	-	1143	99	-	-	-	-	78	-	-	110	4038
ES	-	-	-	-	-	-	-	-	9	-	-	-	-	-	-	-	-	-	721	-	-	-	-	-	64	794
FR	-	-	593	-	914	-	-	2067	811	-	-	-	-	1268	-	-	-	-	-	-	-	-	-	-	1133	6786
GR	-	-	-	0	-	-	-	-	-	-	-	-	20	-	1	-	-	-	-	-	-	-	-	-	-	39
HR	-	79	-	-	0	-	-	-	-	-	-	-	0	-	-	-	-	-	-	-	578	-	-	-	-	657
HU	20	-	-	-	129	-	-	-	-	-	-	432	-	-	-	-	-	-	-	11	0	-	2	-	-	594
IT	0	-	-	-	6	-	-	-	50	2	-	-	-	-	-	-	-	-	-	-	0	-	-	-	-	58
LU	-	-	188	-	-	-	67	-	-	-	82	-	-	-	-	-	-	-	-	-	-	-	-	-	-	255
MK	-	-	-	0	0	-	-	-	-	-	-	-	-	-	-	-	-	-	-	-	-	-	-	-	-	82
NL	-	-	235	-	-	-	-	-	17	-	-	-	-	-	-	-	-	-	-	-	-	-	-	-	-	252
PL	-	-	-	-	-	-	-	-	768	95	-	-	-	-	-	-	-	-	-	-	-	-	-	0	177	1253
PT	-	-	-	-	-	-	-	-	158	-	-	-	-	-	-	-	-	-	-	-	213	-	-	-	-	158
RO	-	-	-	3	51	-	-	-	-	-	-	-	112	-	-	-	-	-	-	-	-	-	-	2	0	168
SI	6	-	-	-	-	-	-	-	-	-	99	580	-	-	-	-	-	-	-	-	-	-	-	-	-	685
SK	-	-	-	-	-	10	-	-	-	-	-	653	-	-	-	-	-	-	-	-	-	-	-	141	-	804
DK_W	-	-	-	-	-	-	522	-	-	-	-	-	-	-	-	-	-	-	-	-	-	-	-	-	56	578
UA_W ²	-	-	-	-	-	-	-	-	-	-	-	-	389	-	-	-	64	-	43	0	0	-	-	-	-	496
Other III ¹	-	-	-	0	77	232	9	25	12	-	-	-	-	-	-	-	93	-	0	-	-	706	-	-	-	1154
Sum imp	1568	138	1016	3	2856	528	779	4960	978	232	307	990	1228	4289	506	213	1607	266	721	152	654	686	784	145	1560	27166

Sum of physical energy flows between UCTE countries = 23211GWh Total physical energy flows = 27166GWh

¹ Other III: Albania, Belarus, Denmark East, Great Britain, Morocco, Republic of Moldavia, Norway, Sweden and Republic of Turkey

² UA_W represents the so-called Burshtyn Island synchronously interconnected with UCTE

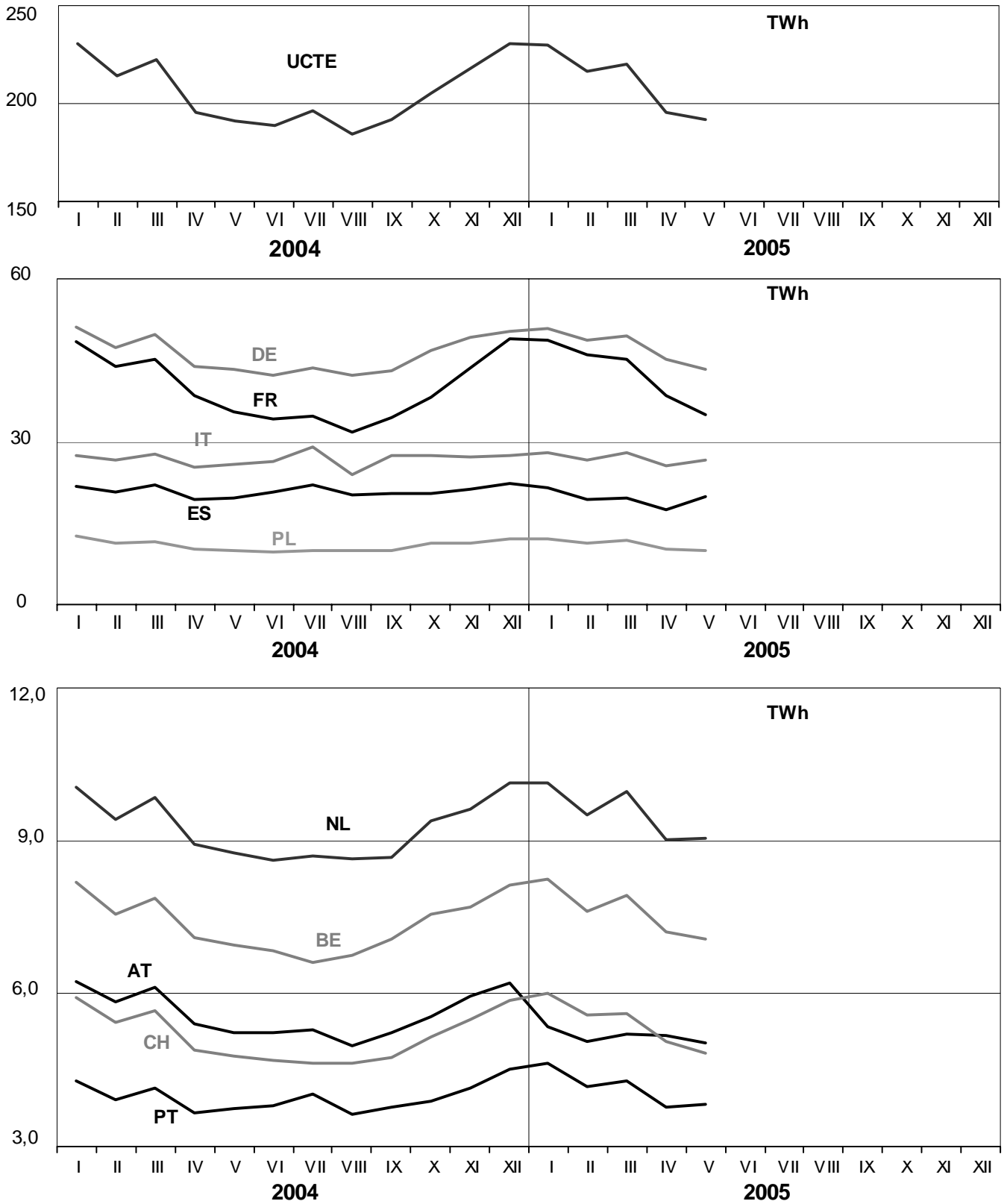
These physical energy flows were measured on the cross-frontier transmission lines (≤ 110 kV) listed in table 9 of the Statistical Yearbook. These values may differ from the official statistics and the exchange balances in chapter 1.

3

Monthly consumption

May 2005

All values are calculated to represent 100% of the national values

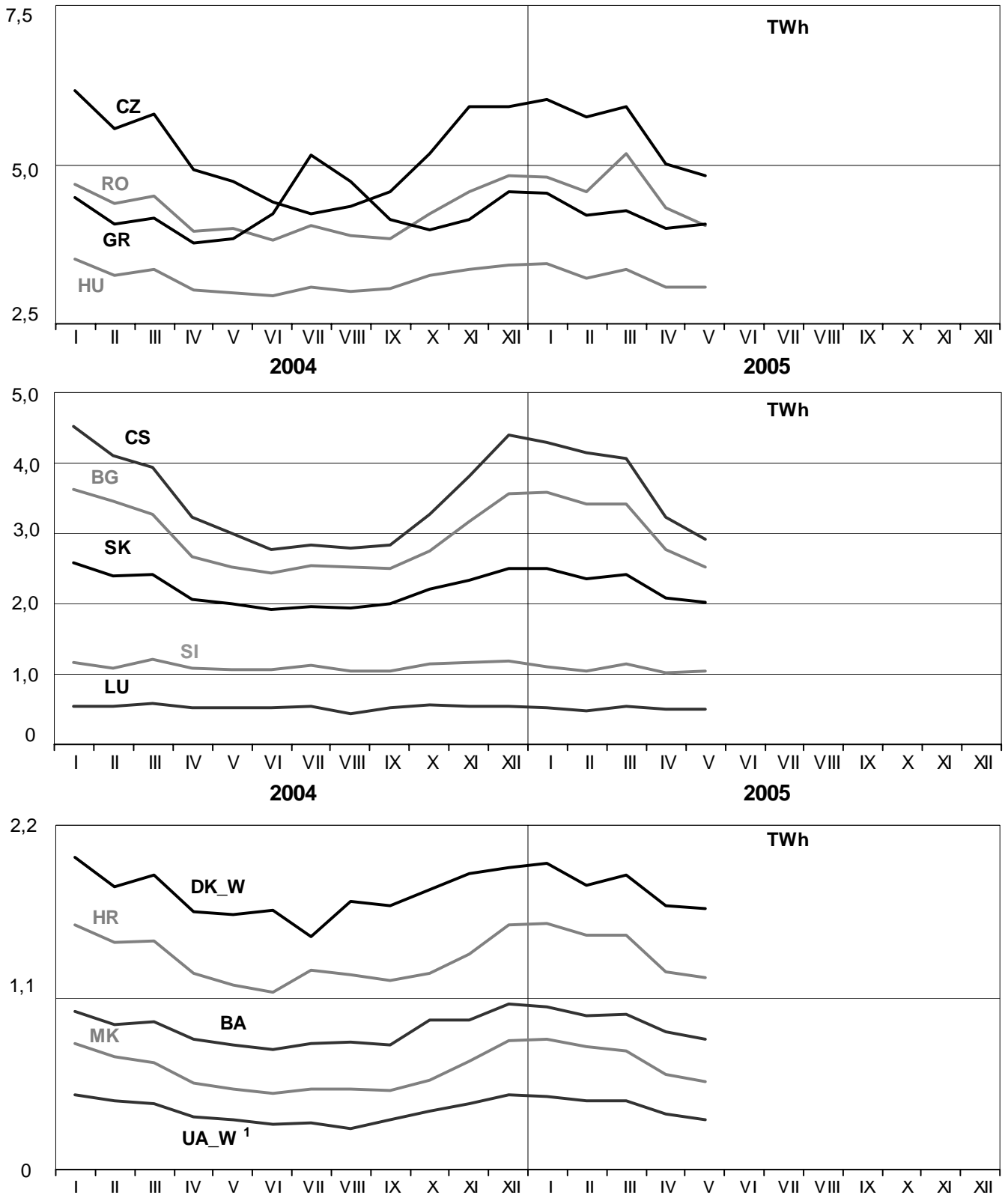


3

Monthly consumption

May 2005

All values are calculated to represent 100% of the national values



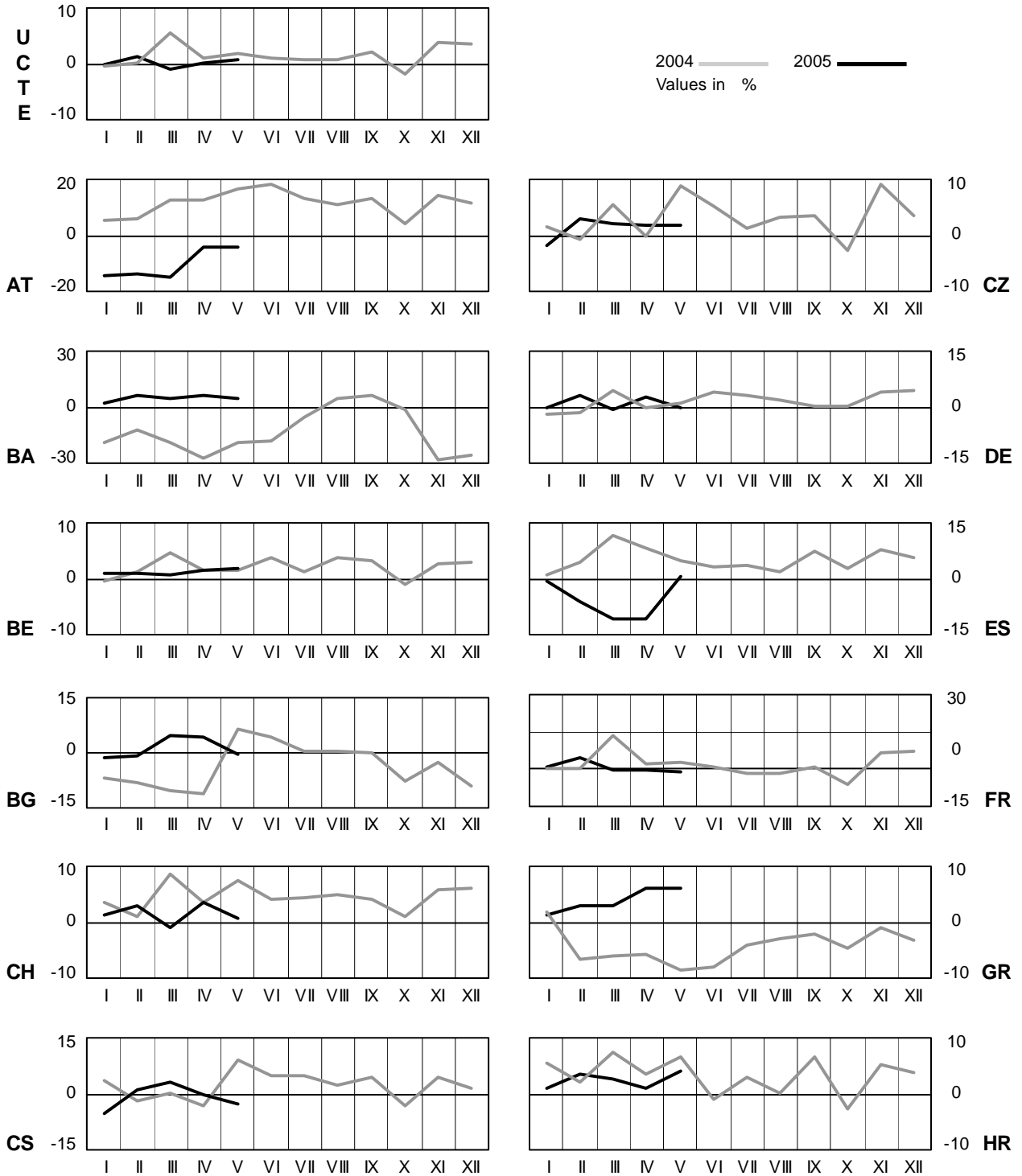
¹ UA_W represents the so-called Burshtyn Island synchronously interconnected with UCTE

4

Monthly consumption variation

May 2005

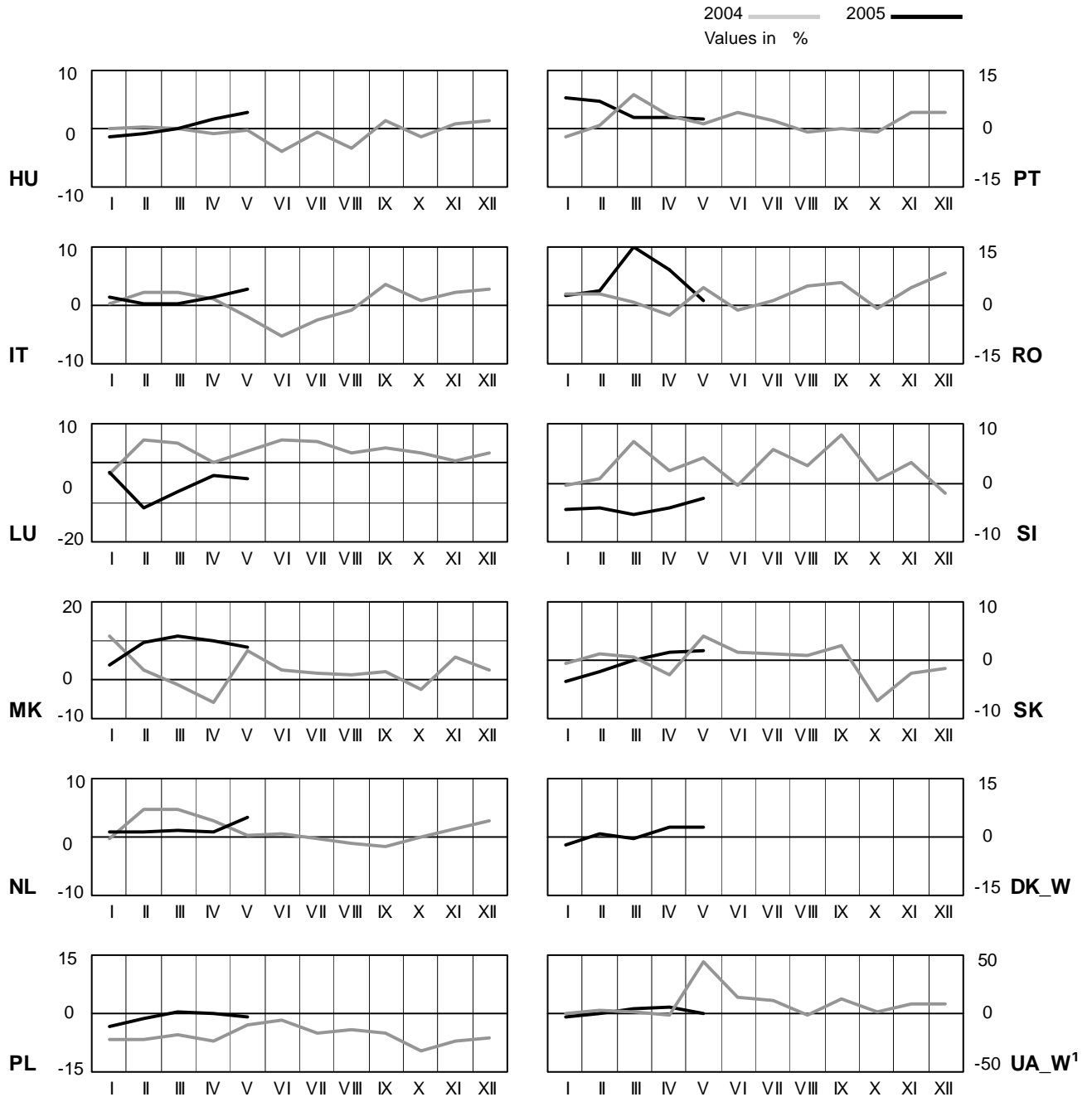
All values are calculated to represent 100% of the national values



4 Monthly consumption variation

May 2005

All values are calculated to represent 100% of the national values



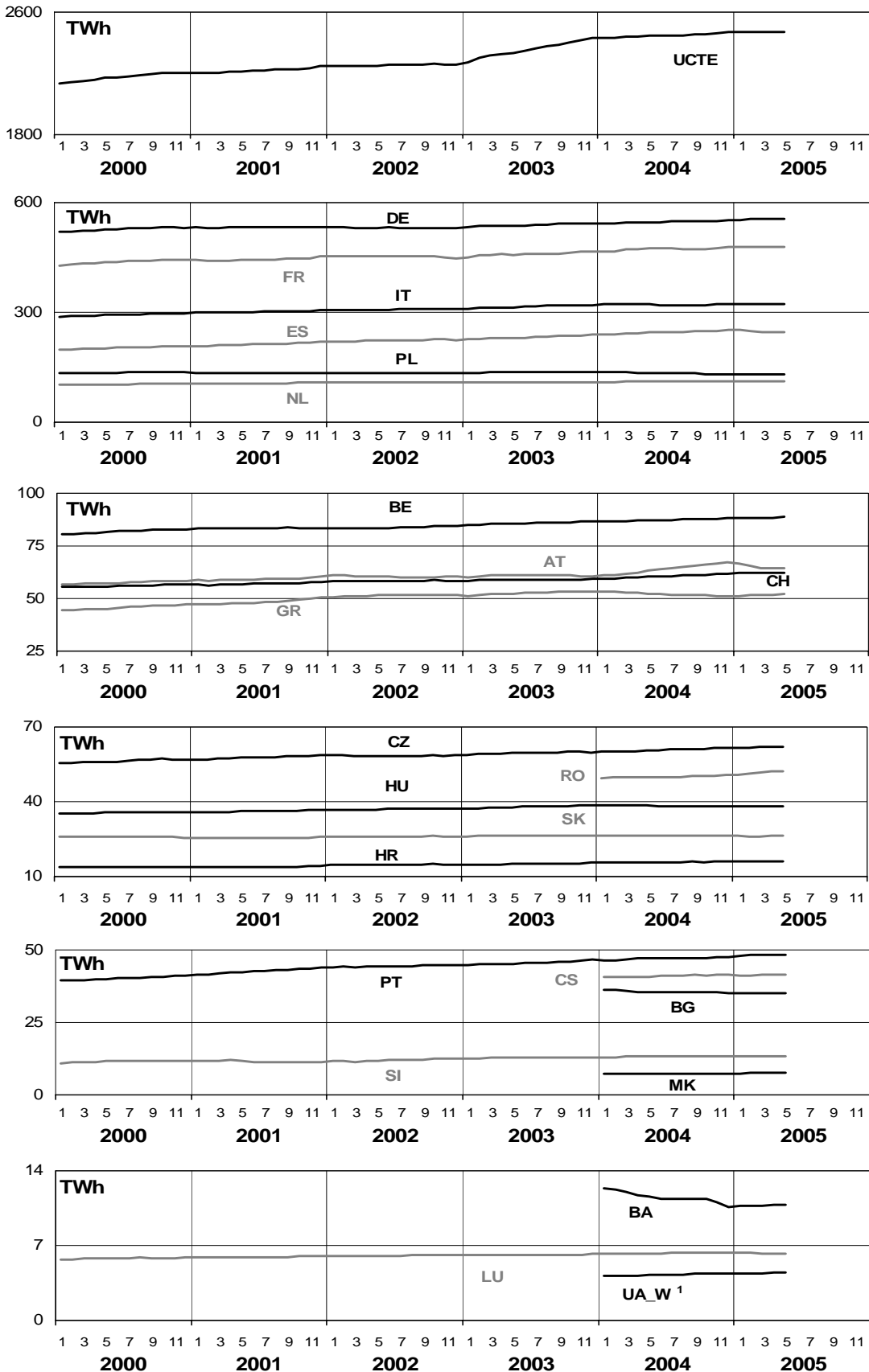
¹ UA_W represents the so-called Burshtyn Island synchronously interconnected with UCTE

5

Consumption of the last 12 months

May 2005

All values are calculated to represent 100% of the national values



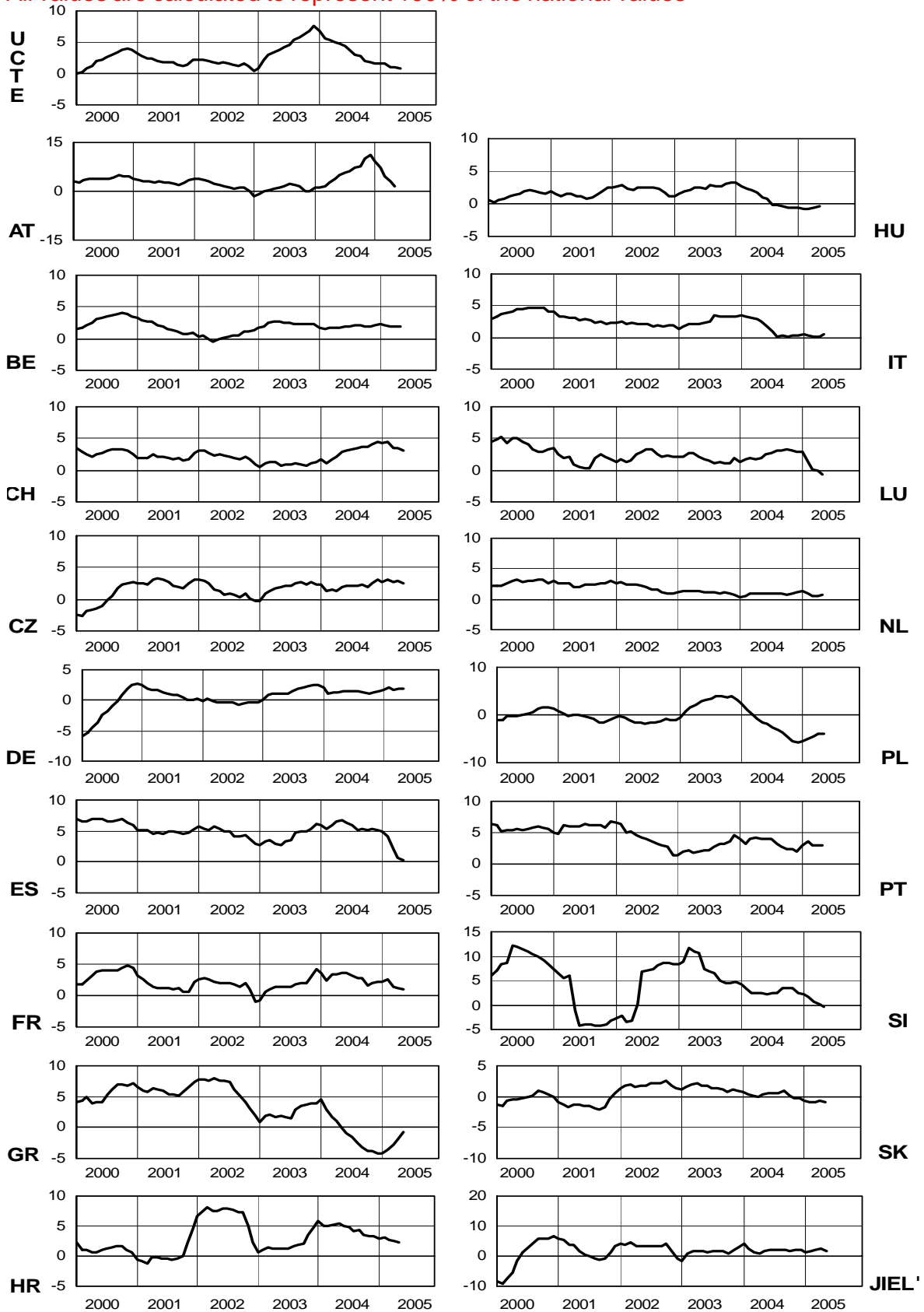
¹ UA_W represents the so-called Burshtyn Island synchronously interconnected with UCTE

6

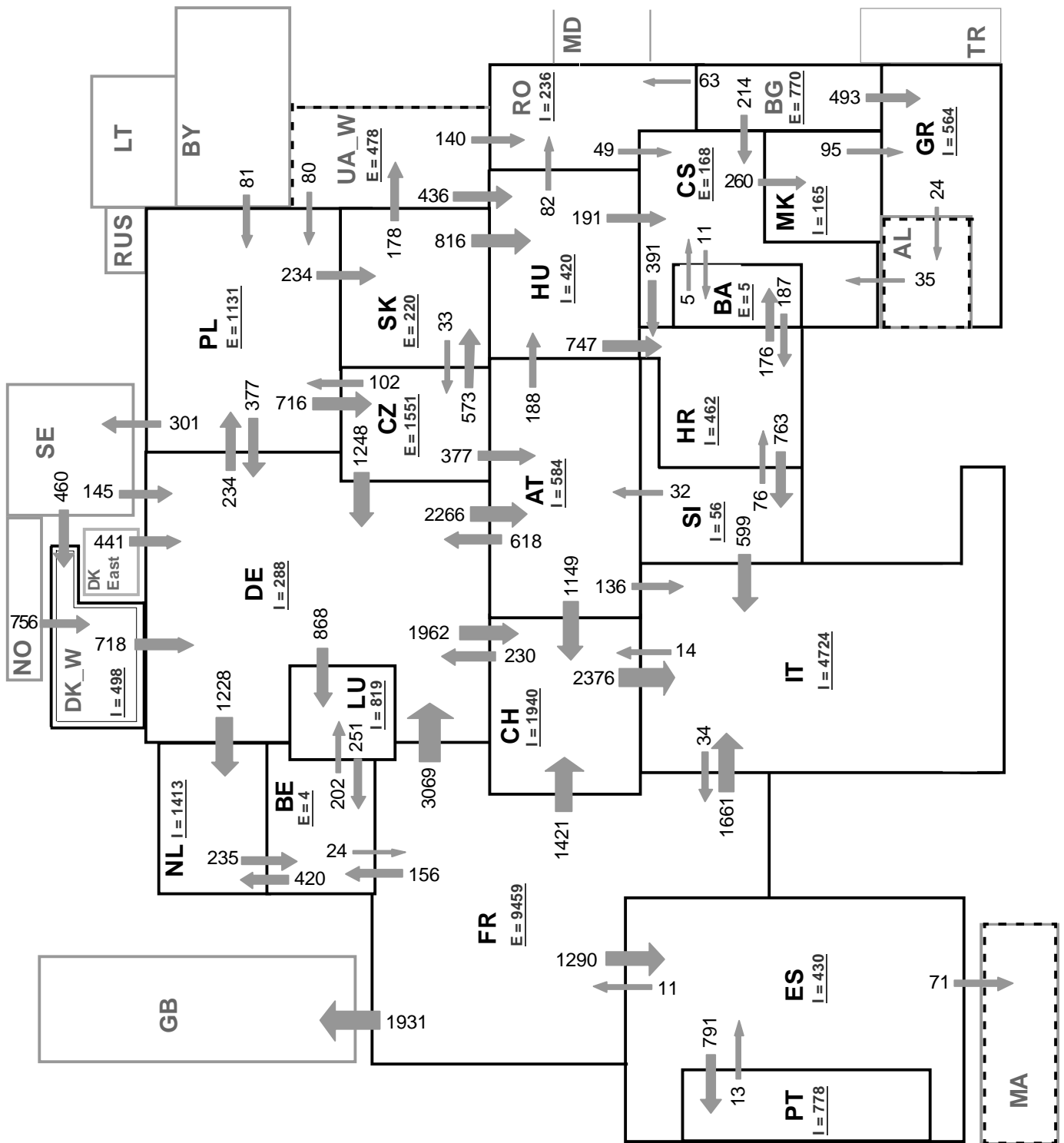
Variation of the last 12 months' consumption in %

May 2005

All values are calculated to represent 100% of the national values



¹ JIEL = FRY + FYROM (Federal Republic of Yugoslavia and former Yugoslav Republic of Macedonia)



Associate member

Synchronous operation with first region

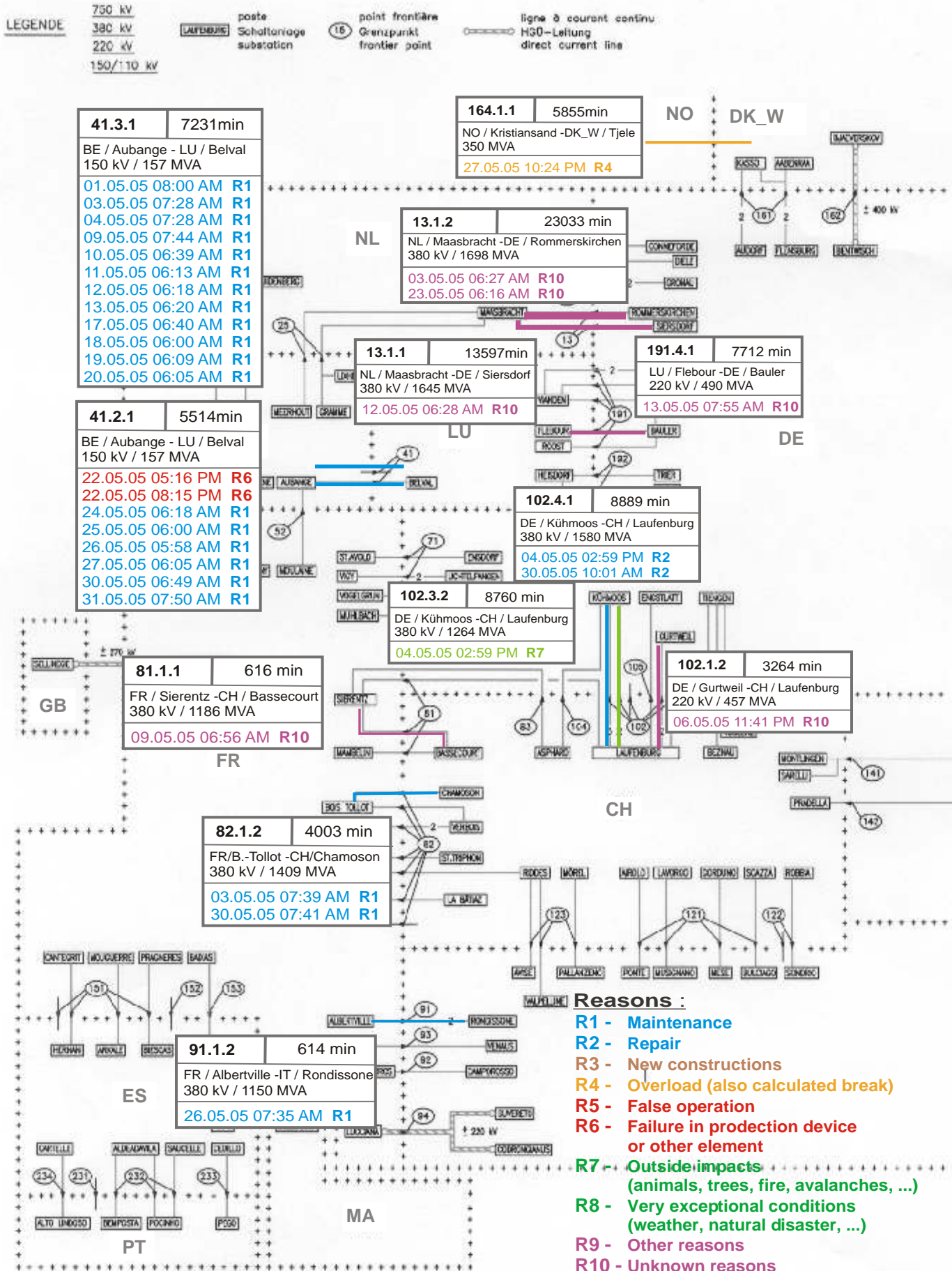
Sum of load flows in MW:

UCTE = 29757MW Total = 35554MW

* Central European Time (CET)

I = Import balance

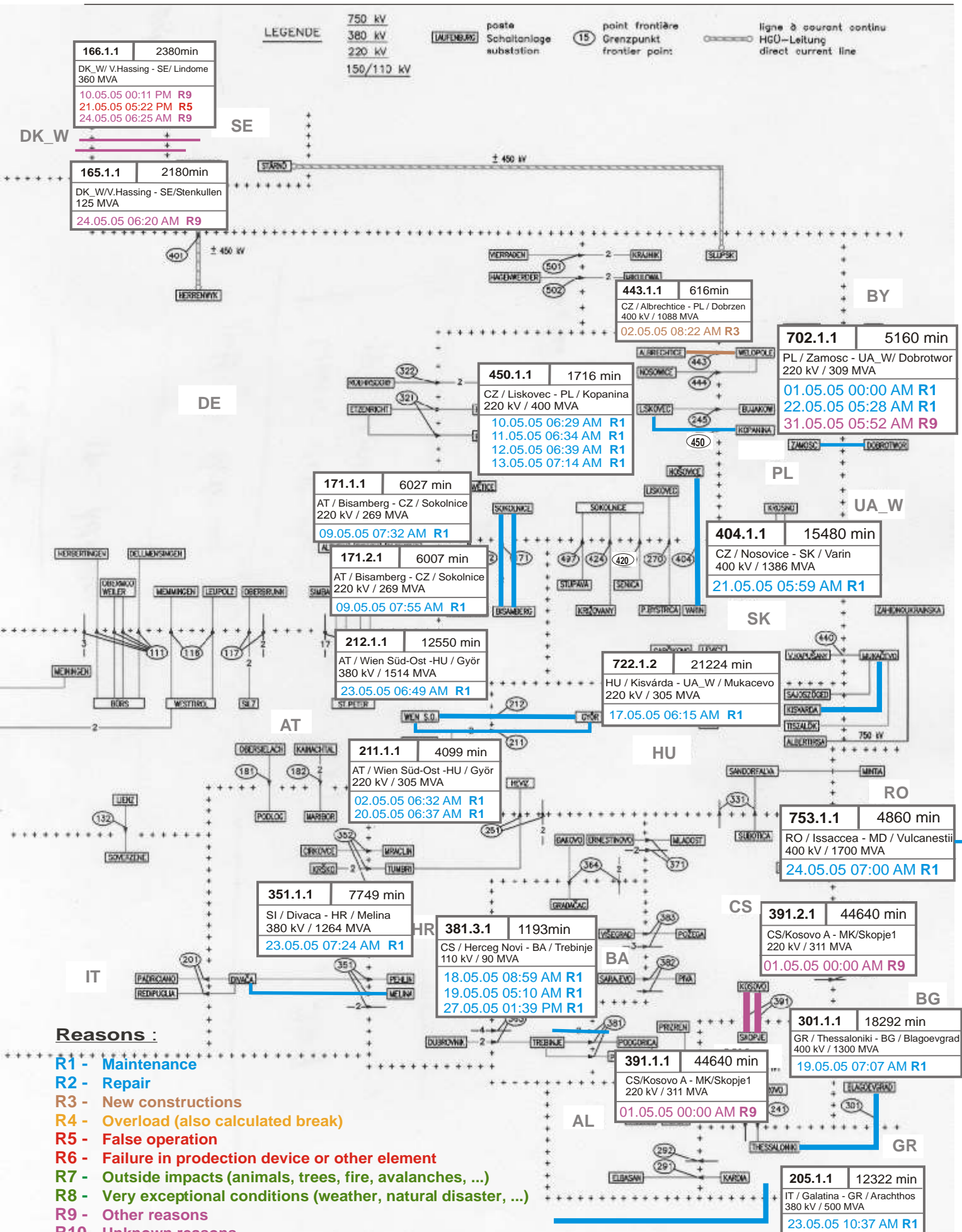
E = Export balance



9

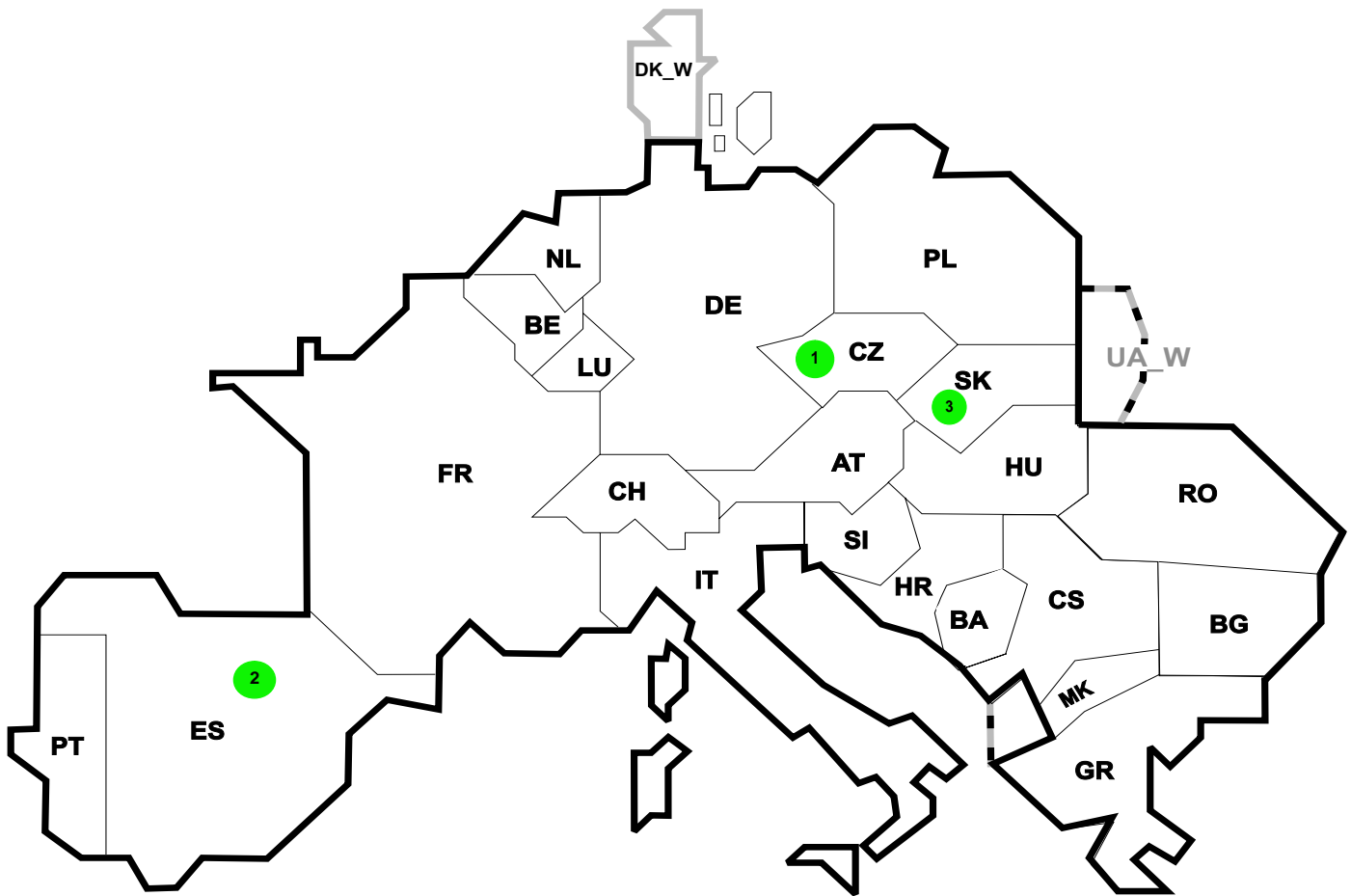
Unavailability of international tie lines (major events with sum over 600 minutes)

May 2005



Reasons :

- R1 - Maintenance
- R2 - Repair
- R3 - New constructions
- R4 - Overload (also calculated break)
- R5 - False operation
- R6 - Failure in production device or other element
- R7 - Outside impacts (animals, trees, fire, avalanches, ...)
- R8 - Very exceptional conditions (weather, natural disaster, ...)
- R9 - Other reasons
- R10 - Unknown reasons



Reasons:

R4 Overload (also calculated break)

R5 False operation

R6 Failure in protection device or other element

R7 Outside impacts (animals, trees, fire, avalanches, ...)
(animals, trees, fire, avalanches, ...)

R8 Very exceptional conditions
(weather, natural disaster, ...)

R9 Other reasons

R10 Unknown reasons

Nbr	Country	Substation	Reason	Energy not supplied [MWh]	Total loss of power [MW]	Restoration time [min]	Equivalent time of interruption ¹
1	CZ	Opocinek	R8	18	0	42	0,15
2	ES	Cacicedo	R7	8	0	6	0,02
3	SK	Levice	R8	4	70	3	0,08

¹ (year [in min] * energy not supply) / consumption last 12 months

Control area	Export Programs	Import Programs	Export Programs at 03:00	Import Programs at 03:00	Export Programs at 11:00	Import Programs at 11:00
AT	754900	482959	550	651	800	932
BA	161068	60987	124	94	194	69
BE	541701	840947	893	847	988	1112
BG	n.a.	n.a.	n.a.	n.a.	n.a.	n.a.
CH	2287672	2637533	2453	4427	4279	2967
CS	356771	334956	541	374	682	640
CZ	1776554	509776	2149	528	2419	847
DE	2426228	2895933	2678	2925	2648	4524
ES	706994	870840	1017	1300	1251	990
FR	8048803	1514371	11112	1724	9825	2612
GR	28247	294524	0	553	550	550
HR	43160	376186	45	511	62	503
HU	329595	963377	605	1079	388	1724
IT	58435	4289459	48	4772	79	6142
MK	600	132000	190	330	60	259
NL	352313	1705454	647	2053	344	2555
PL	1084279	132911	1265	178	1557	200
PT	35089	603923	0	784	0	1099
RO	339226	323281	320	558	675	415
SI	492368	462721	655	681	677	533
SK	546829	378112	634	363	853	854
DK_W	541852	804455	697	1077	1200	1460
UA_W ¹	286122	0	397	0	497	0

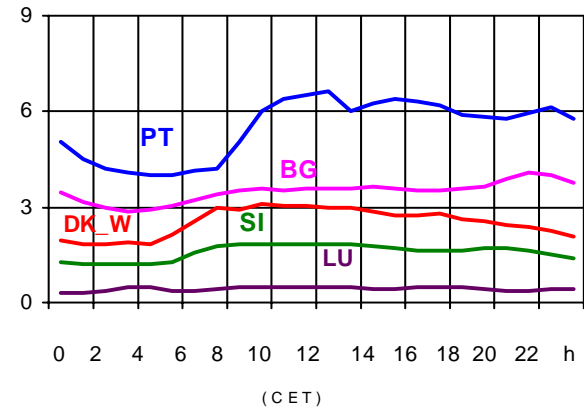
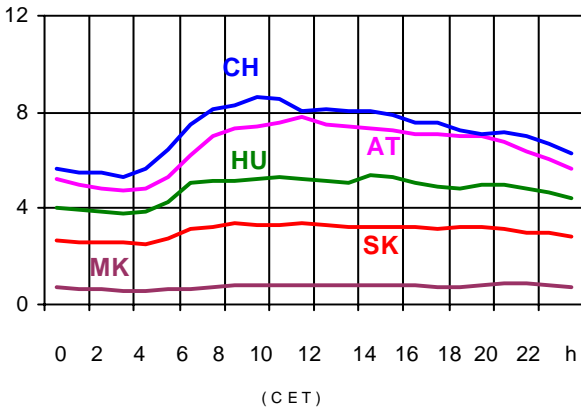
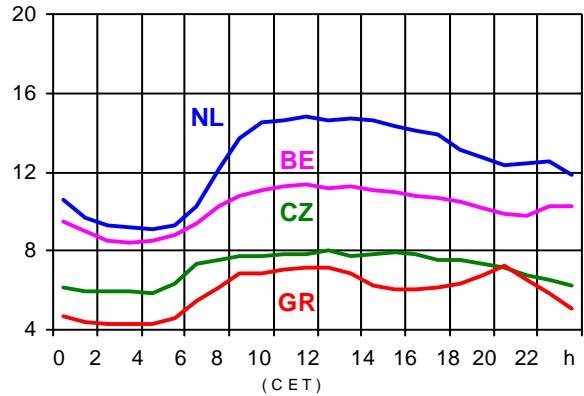
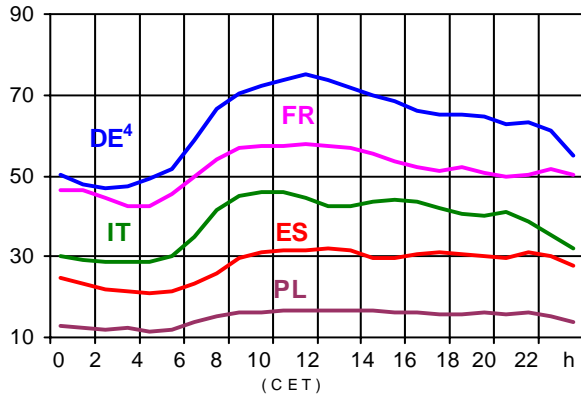
- Control areas can differ from national borders (i.e. German block which includes parts of AT, LU and DK).
- Values are calculated on an hourly base (MWh).
- This values are not the provisional values entered in the VULCANUS system, but the definitive values after an eventual correction during the actual date.
- Export Programs: Sum of all positive values of every hour of every border
- Import Programs: Sum of all negative values of every hour of every border
- Export Programs at 03:00: Sum of all positive values the third Wednesday from 02:00 to 03:00 a.m.
- Import Programs at 03:00: Sum of all negative values the third Wednesday from 02:00 to 03:00 a.m.
- Export Programs at 11:00: Sum of all positive values the third Wednesday from 10:00 to 11:00 a.m.
- Import Programs at 11:00: Sum of all negative values the third Wednesday from 10:00 to 11:00 a.m.

¹ UA_W represents the so-called Burshtyn Island synchronously interconnected with UCTE

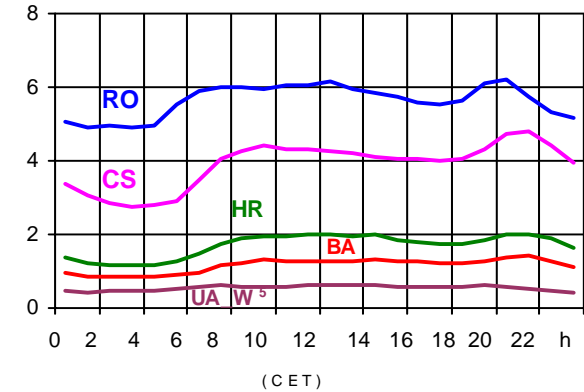
All values are calculated to represent 100% of the national values

Consumption hourly load curves¹ on 18.05.2005

Values in GW



	Peak load MW	var.% ²	Load representativity ¹ %	Parallel power ³ MW
AT	7781	-12,4	100	7502
BA	1405	2,4	100	1382
BE	11371	2,9	100	11038
BG	4086	-1,8	100	4539
CH	8587	6,4	100	10033
CS	4799	-8,1	100	4354
CZ	8020	7,3	100	9606
DE ⁴	74945	0,4	91	73600
ES	31887	-1,9	98	31142
FR	57787	4,6	100	65183
GR	7205	8,6	100	6457
HR	2024	18,4	100	1609
HU	5383	7,2	100	3929
IT	46147	2,6	100	39081
LU	510	-39,8	99	476
MK	901	1,0	100	818
NL	14768	5,3	100	12398
PL	16736	4,0	100	18407
PT	6604	-1,0	97	5138
RO	6225	-1,5	100	6052
SI	1849	5,4	95	1885
SK	3384	5,1	100	3200
UCTE	318147	2,3		317829
DK_W	3083	2,4	100	2869
UA_W ⁵	644	-5,8	100	1090



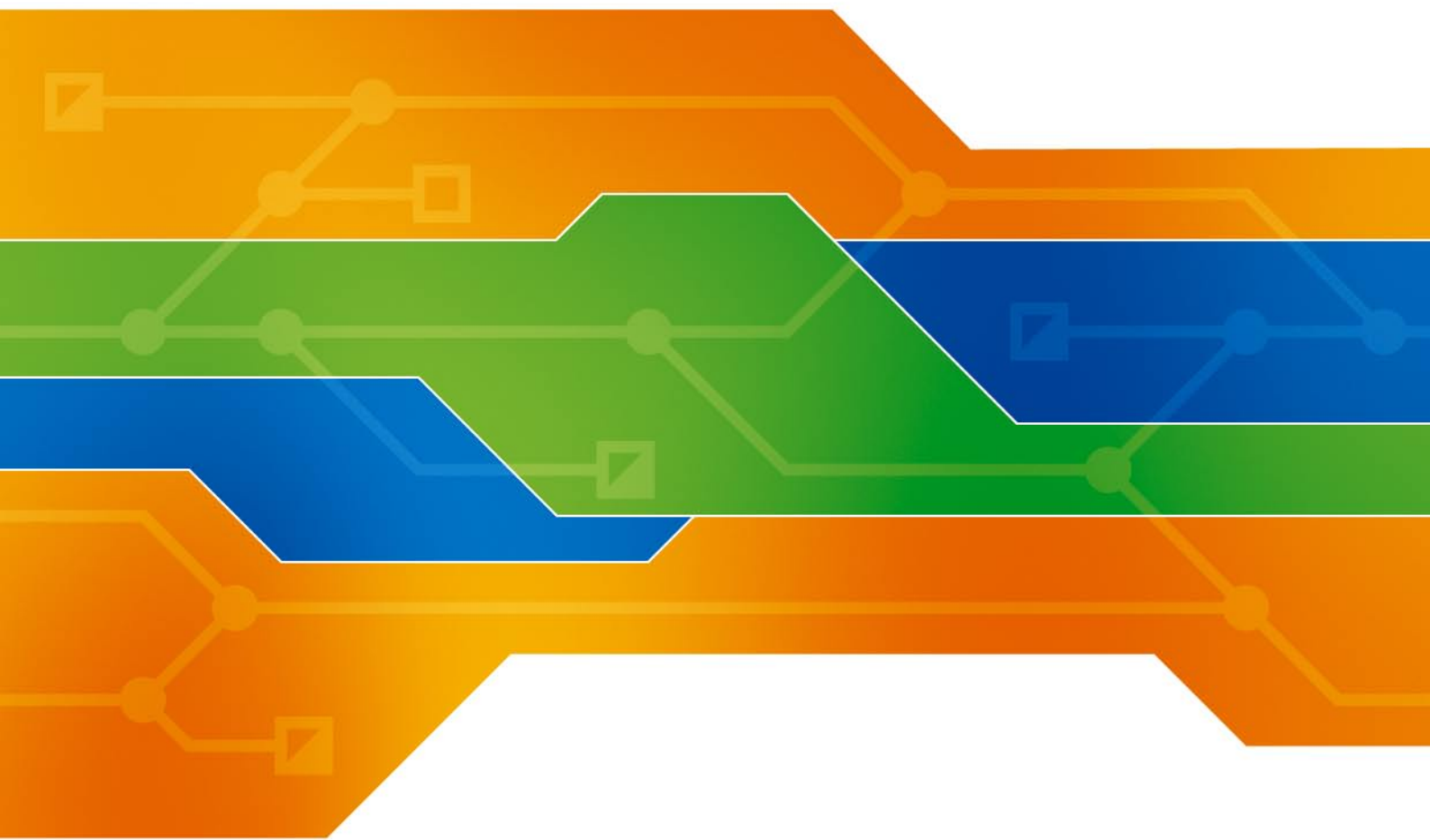
¹ Percentage as referred to total values in %

² Variation as compared to corresponding month of the previous year

³ Power produced in parallel operation (including autoproduction)

⁴ Values estimated on the basis of the vertical load. The vertical load is the total amount of the power flows out of the transmission network into distribution and large consumer networks.

⁵ UA_W represents the so-called Burshtyn Island synchronously interconnected with UCTE



Contact

Boulevard Saint-Michel, 15
B-1040 Brussels - Belgium
Tel +32 2 741 69 40 - Fax +32 2 741 69 49

info@ucte.org
www.ucte.org