

UCTE



April 2003

Monthly provisional values
union for the co-ordination of transmission of electricity

Table of contents ¹		Page
1	Electricity supply situation of the countries	2
2	Physical energy flows	3
3	Monthly consumption	4
4	Monthly consumption variation	5
5	Consumption of last 12 months	6
6	Variation of the last 12 months' consumption	7
7	Load flows (night)	8
8	Load flows (day)	9
9	Unavailability of international tie lines (major events)	10
10	Network reliability (major events)	12
11	Scheduled exchanges	13
12	Load on the 3 rd Wednesday	14

¹ Monthly provisional values as of UCTE database from 13 August 2003

Countries	Net production in GWh ¹				Exchange balance in GWh	Pump in GWh	Consumption in GWh ¹			
	Hy	Tn	Tc	Total			monthly	Δ ³ [%]	last 12 months	Δ ³ [%]
B	121	3569	2676	6366 ²	588	135	6819	1,7	84016	1,7
D	1748	12608	28568	42924 ²	-1414	580	40930	-0,8	503835	1,7
E	3863	4667	8293	16823 ²	-37	211	16575	-2,3	212844	1,9
F	4427	34508	3617	42552	-5538	645	36369	3,7	440874	1,1
GR	304	0	3354	3658 ²	140	76	3722	1,2	47982	1,7
I	2952	0	18147	21099	4693	854	24938	2,2	312726	1,9
SLO	190	468	378	1036	-38	0	998	2,6	12119	10,2
HR	381	0	501	882 ²	333	5	1210	2,1	14920	1,3
BiH	449	0	517	966	166	0	1132	n.a.	n.a.	n.a.
FYROM	105	0	440	545 ²	1	0	546	n.a.	n.a.	n.a.
SCG	1068	0	2124	3192	23	19	3196	n.a.	n.a.	n.a.
L	68	0	211	279	310	80	509	1,4	6099	-4,5
NL	0	326	6994	7320 ²	1355	0	8675	0,6	108734	2,4
A	2461	0	1304	3765	-24	210	3531	-12,4	51044	1,2
P	1673	0	1446	3119 ²	178	29	3268	1,6	41370	2,4
CH	2376	2314	243	4933 ²	-10	204	4719	-0,9	58817	2,1
CZ	163	1635	4462	6260 ²	-1287	46	4927	2,7	59808	2,1
H	15	898	1653	2566 ²	484	0	3050	2,5	37632	2,1
PL ⁵	356	0	11764	12120 ²	-823	186	11111	4,7	136332	1,5
SK	355	1148	755	2258 ²	-138	12	2108	0,9	26391	3,0
UCTE	24900	63992	101293	190185²	-1466	3331	185388	0,9	2200990	1,6
RO	1560	472	2199	4231 ²	-176	0	4055	n.a.	n.a.	n.a.
BG	265	1379	1647	3291 ²	-252	39	3000	n.a.	n.a.	n.a.
West-UA	17	0	580	597 ²	-258	0	339	n.a.	n.a.	n.a.

¹ Percentage as referred to total values in %

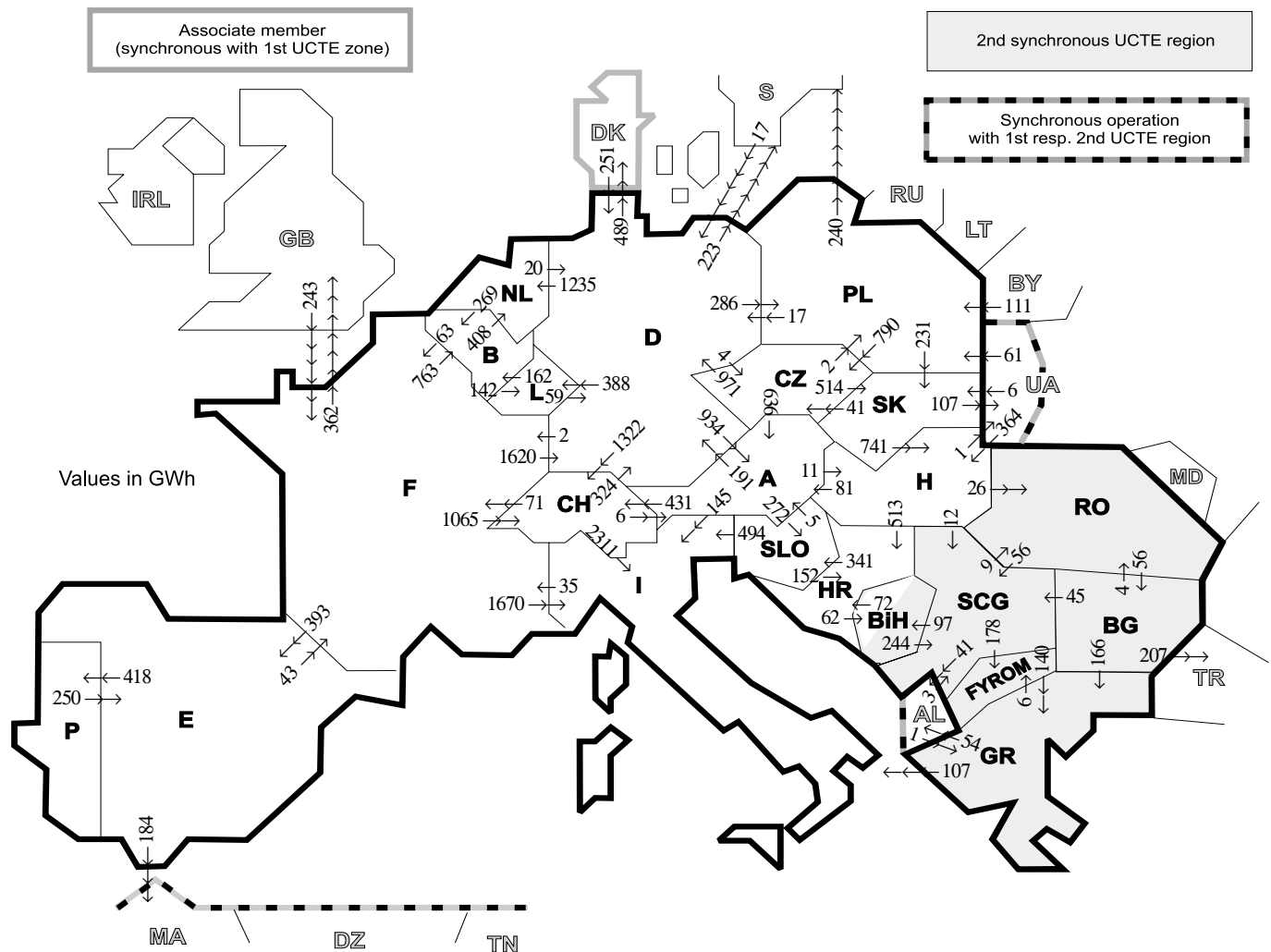
Countries	B	D	E	F	GR ⁴	I	SLO	HR	BiH	FY- ROM	SCG	L	NL	A	P	CH	CZ	H	PL	SK	RO	BG	West- UA
Production	99	94	94	97	93	100	95	100	99	100	96	98	100	84	91	100	100	100	100	100	100	100	100
Consumption	99	94	94	97	93	100	95	100	99	100	96	99	100	90	91	100	100	100	100	100	100	100	100

² Including deliveries from industry

³ Variation as compared to corresponding period of the previous year and representativity 100%

⁴ The representativity of data referring to the whole country including the isolated systems of the Greek island is 93%.
The representativity of data referring interconnected system on the mainland is 99%.

⁵ Production values are gross values.



Exporting countries	Importing countries																			Σ Export							
	B	D	E	F	GR	I	SLO	HR	BIH	FY-ROM	SCG	L	NL	A	P	CH	CZ	H	PL		SK	RO	BG	West-UA	DK ²	III ¹	
B	-	-	-	63	-	-	-	-	-	-	-	142	408	-	-	-	-	-	-	-	-	-	-	-	-	-	613
D	-	-	-	2	-	-	-	-	-	-	-	388	1235	934	-	-	-	-	-	-	-	-	-	489	712	4883	
E	-	-	-	43	-	-	-	-	-	-	-	-	-	-	418	-	-	-	286	-	-	-	-	-	-	184	645
F	763	1620	393	-	-	1670	-	-	-	-	-	-	-	-	-	1065	-	-	-	-	-	-	-	-	-	362	5873
GR	-	-	-	-	-	107	-	-	-	6	-	-	-	-	-	-	-	-	-	-	-	0	-	-	54	167	
I	-	-	-	35	0	0	-	-	-	-	-	-	-	0	0	-	-	-	-	-	-	-	-	-	-	35	
SLO	-	-	-	-	-	494	-	152	-	-	-	-	-	5	-	-	-	-	-	-	-	-	-	-	-	651	
HR	-	-	-	-	-	-	341	62	-	0	-	-	-	-	-	-	-	0	-	-	-	-	-	-	-	403	
BIH	-	-	-	-	-	-	72	-	-	244	-	-	-	-	-	-	-	-	-	-	-	-	-	-	-	316	
FYROM	-	-	-	-	140	-	-	-	-	0	-	-	-	-	-	-	-	-	-	-	-	0	-	-	-	140	
SCG	-	-	-	-	-	-	-	0	97	178	-	-	-	-	-	-	-	0	-	-	9	16	-	-	41	341	
L	162	59	-	-	-	-	-	-	-	-	-	-	-	-	-	-	-	-	-	-	-	-	-	-	-	221	
NL	269	20	-	-	-	-	-	-	-	-	-	-	-	-	-	-	-	-	-	-	-	-	-	-	-	289	
A	-	191	-	-	-	145	272	-	-	-	-	-	-	-	-	-	-	-	-	-	-	-	-	-	-	1050	
P	-	-	250	-	-	-	-	-	-	-	-	-	-	-	-	-	-	-	-	-	-	-	-	-	-	250	
CH	-	324	-	71	-	2311	-	-	-	-	-	-	-	6	-	-	-	-	-	-	-	-	-	-	-	2712	
CZ	-	971	-	-	-	-	-	-	-	-	-	-	636	-	-	-	-	-	2	514	-	-	-	-	-	2123	
H	-	-	-	-	-	-	-	513	-	-	12	-	-	81	-	-	-	-	-	0	26	1	-	-	-	633	
PL	-	17	-	-	-	-	-	-	-	-	-	-	-	-	-	-	790	-	-	231	-	-	0	-	0	1278	
SK	-	-	-	-	-	-	-	-	-	-	-	-	-	-	-	-	41	741	0	-	-	-	-	107	107	889	
RO	-	-	-	-	-	-	-	-	-	-	-	-	-	-	-	-	-	0	-	-	-	56	-	-	0	112	
BG	-	-	-	-	166	-	-	-	-	0	45	-	-	-	-	-	-	-	-	-	4	-	-	-	207	422	
West-UA	-	-	-	-	-	-	-	-	-	-	-	-	-	-	-	-	-	-	-	-	-	-	-	-	-	431	
DK ²	-	251	-	-	-	-	-	-	-	-	-	-	-	-	-	-	-	-	364	61	6	0	-	-	-	251	
III ¹	-	268	0	243	1	-	-	-	-	-	3	-	-	-	-	-	-	-	-	-	6	0	0	-	-	1057	
Σ Import	1194	3470	643	457	307	4727	613	737	159	184	360	530	1643	1662	418	2818	835	1116	460	751	39	72	108	489	1908	25103	

Sum of physical energy flows between UCTE countries = 22246 GWh

Total physical energy flows = 25103 GWh

¹ III = Third countries: Albania, Belarus, Denmark, Great Britain, Morocco, Republic of Moldavia, Sweden, Republic of Turkey and West-Ukraine

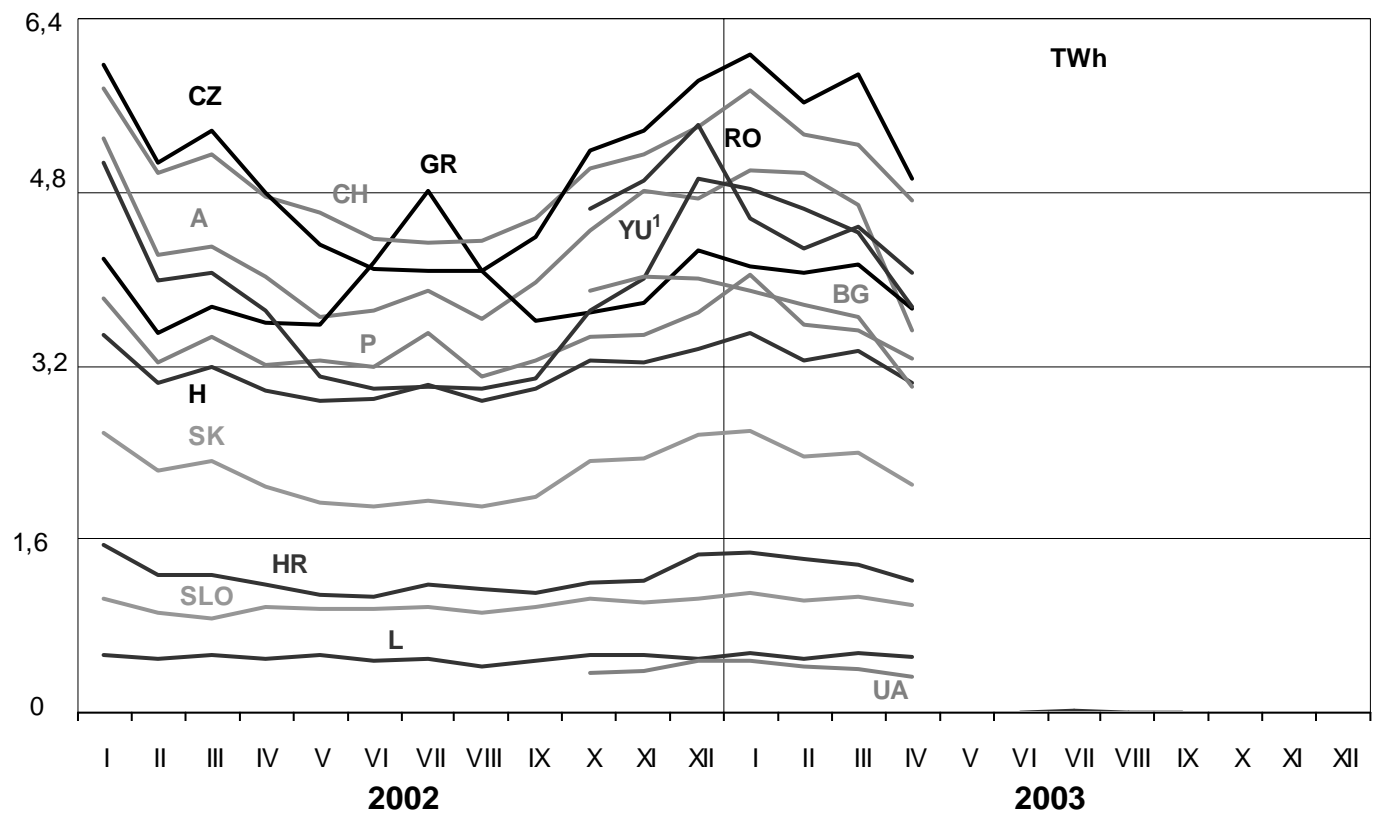
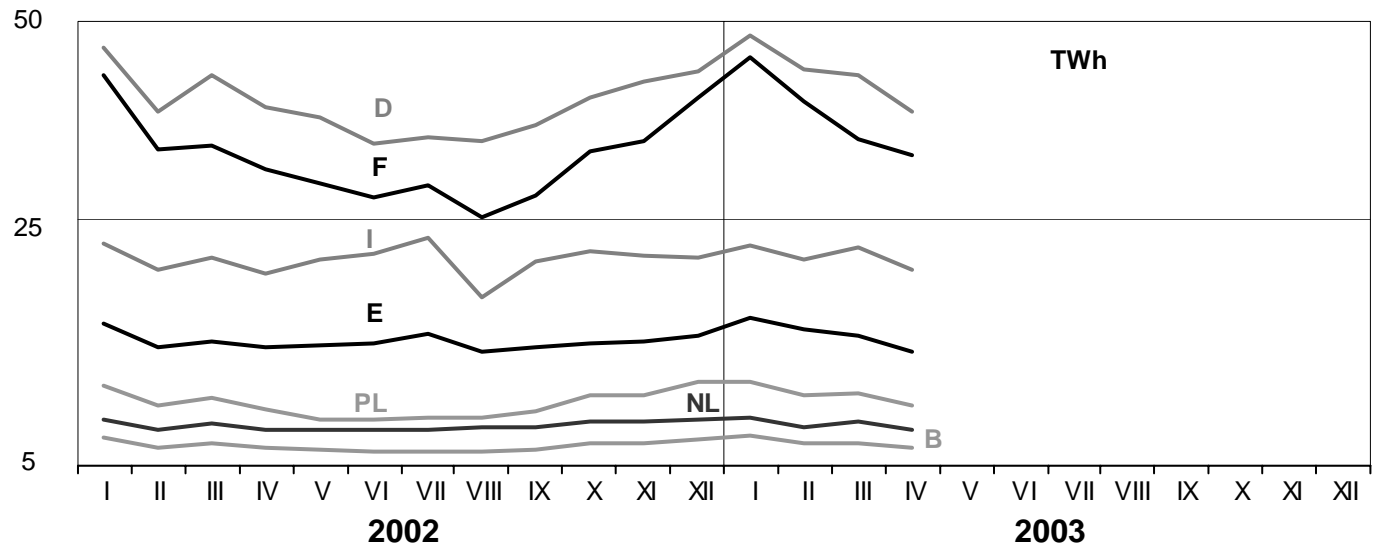
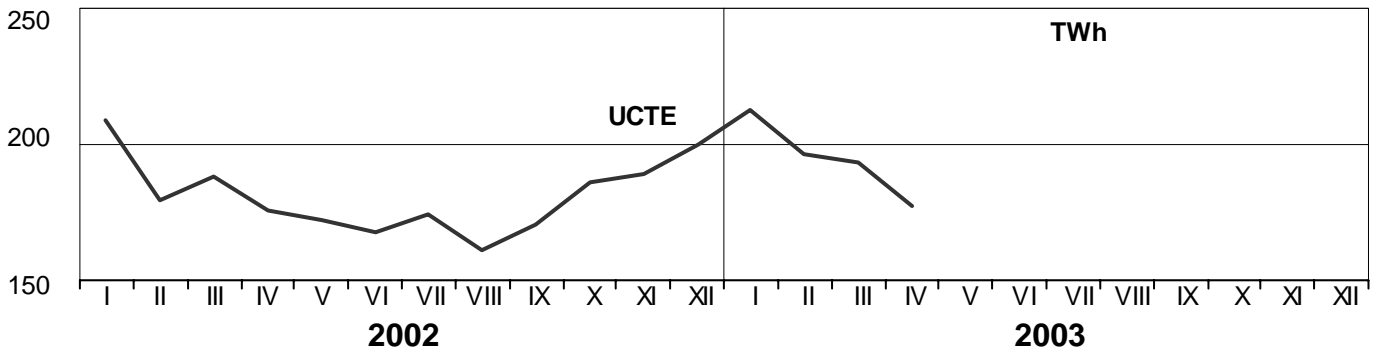
² Denmark (Jutland)

These physical energy flows were measured on the cross-frontier transmission lines (≥ 110 kV) listed in table 9 of the Statistical Yearbook. These values may differ from the official statistics and the exchange balances in chapter 1.

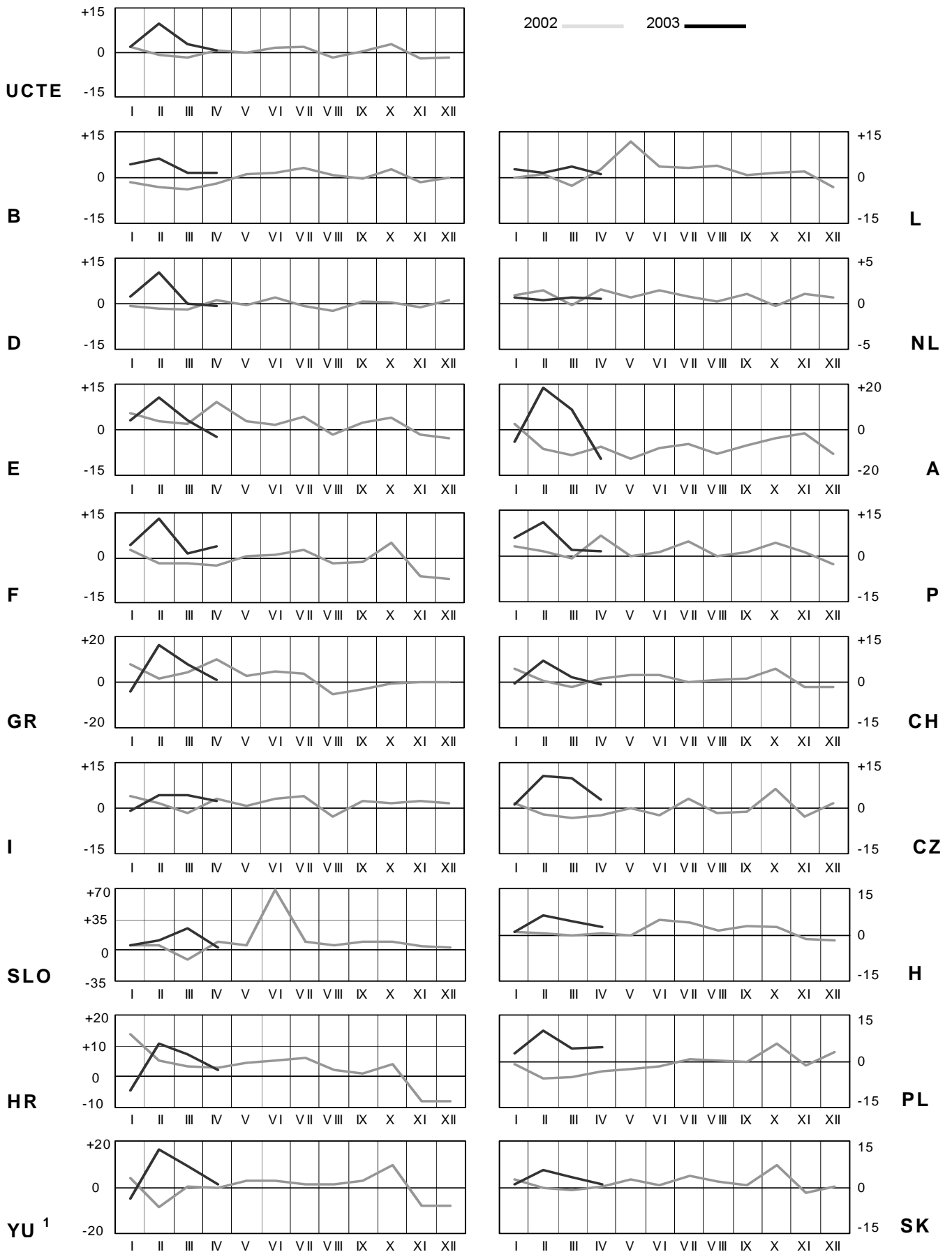
3

Monthly consumption

April 2003



¹ YU = FRY + FYROM (Federal Republic of Yugoslavia and Former Yugoslav Republic of Macedonia)

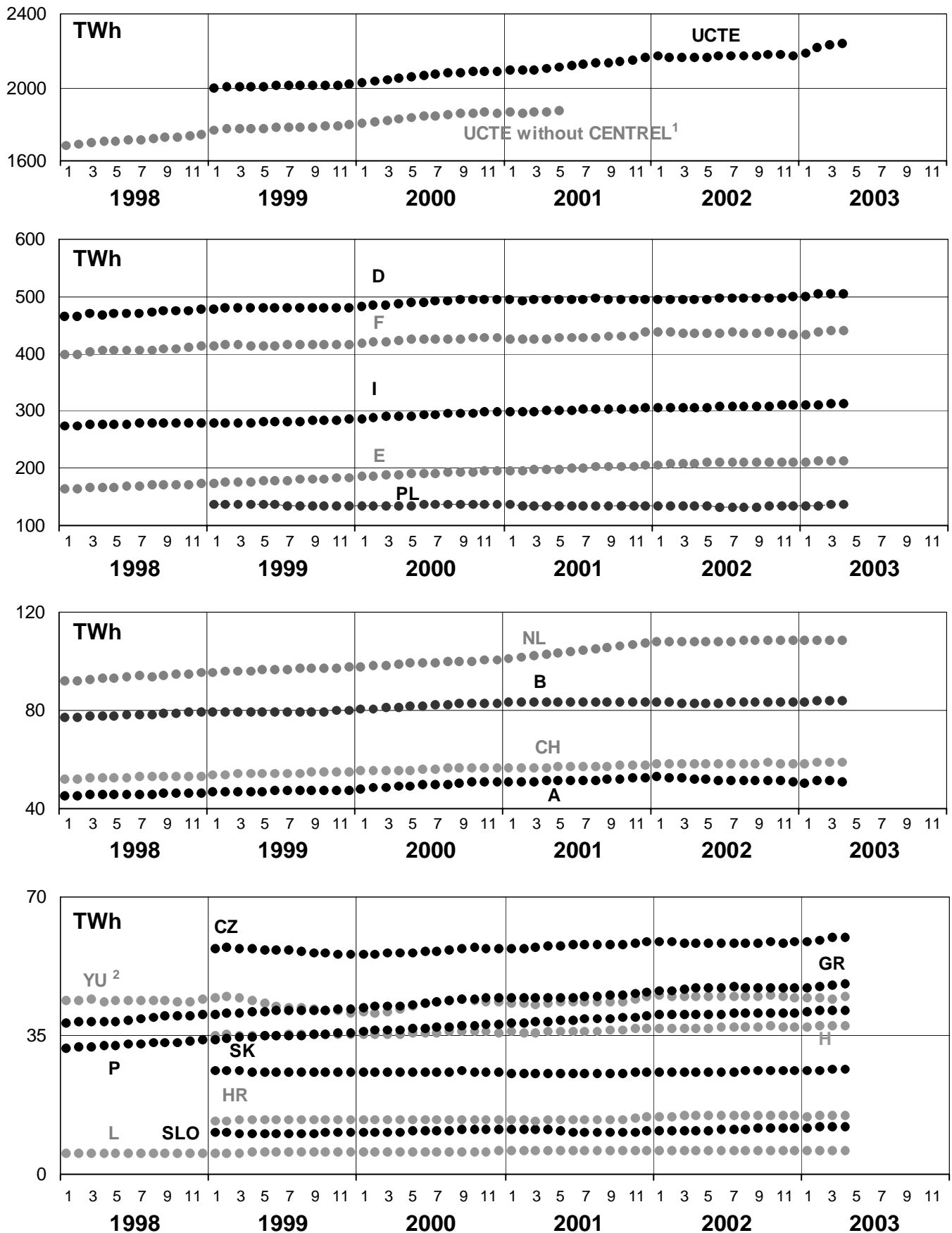


¹YU = FRY + FYROM (Federal Republic of Yugoslavia and Former Yugoslav Republic of Macedonia)

5

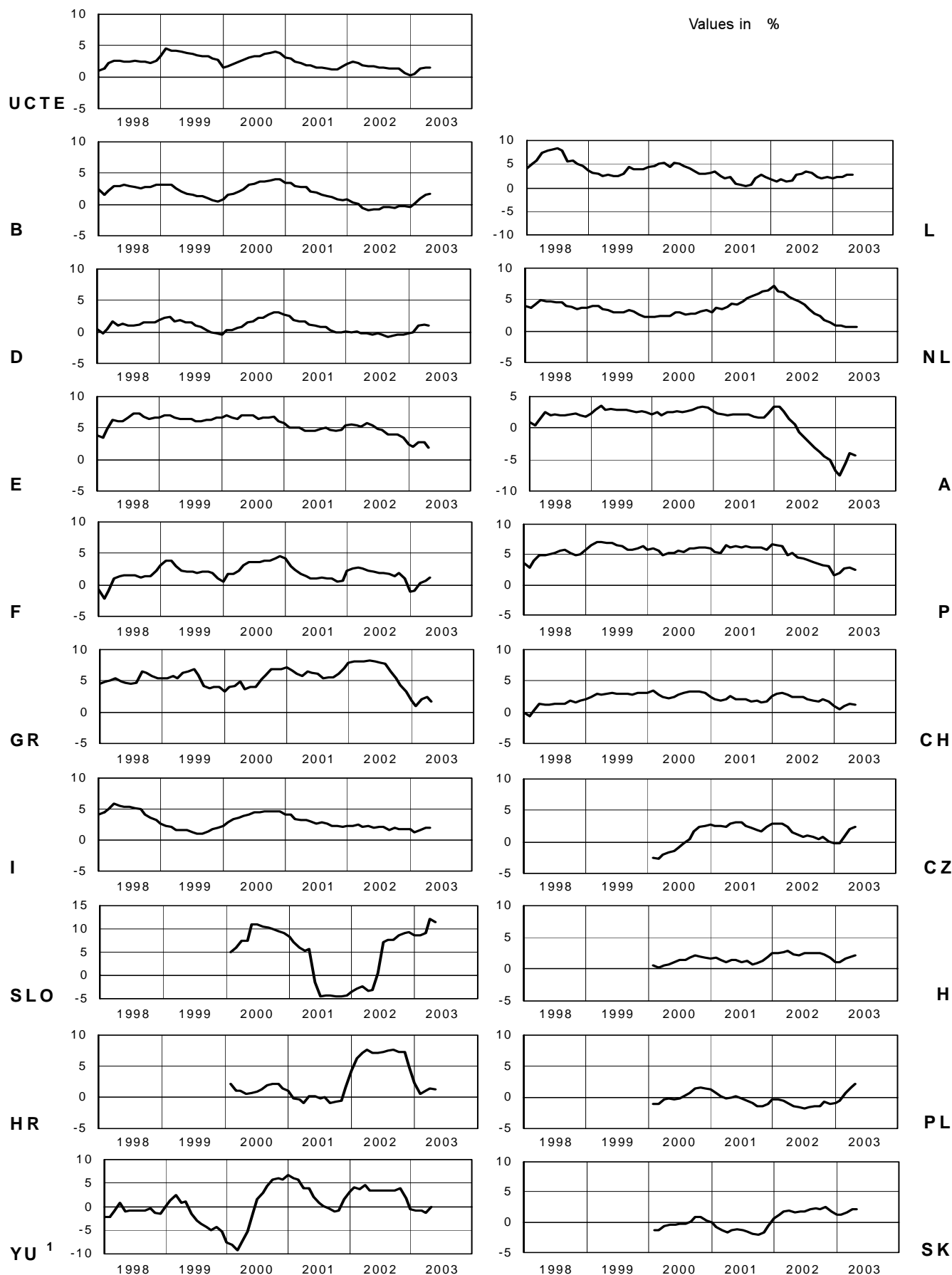
Consumption of last 12 months

April 2003

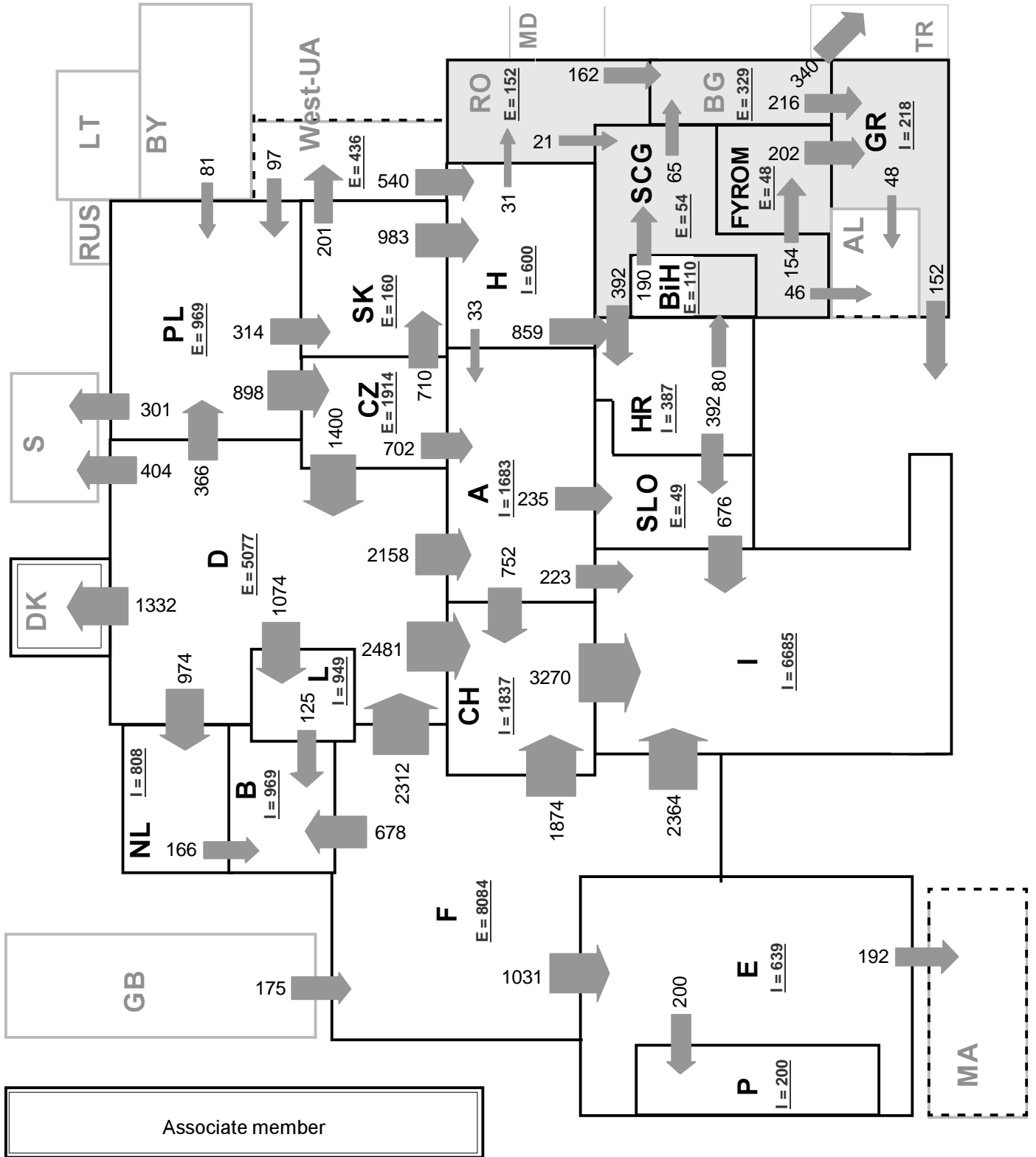


¹ CENTREL countries CZ, H, PL and SK member of UCTE from May 2001

² YU = FRY + FYROM (Federal Republic of Yugoslavia and Former Yugoslav Republic of Macedonia)



¹ YU = FRY + FYROM (Federal Republic of Yugoslavia and Former Yugoslav Republic of Macedonia)



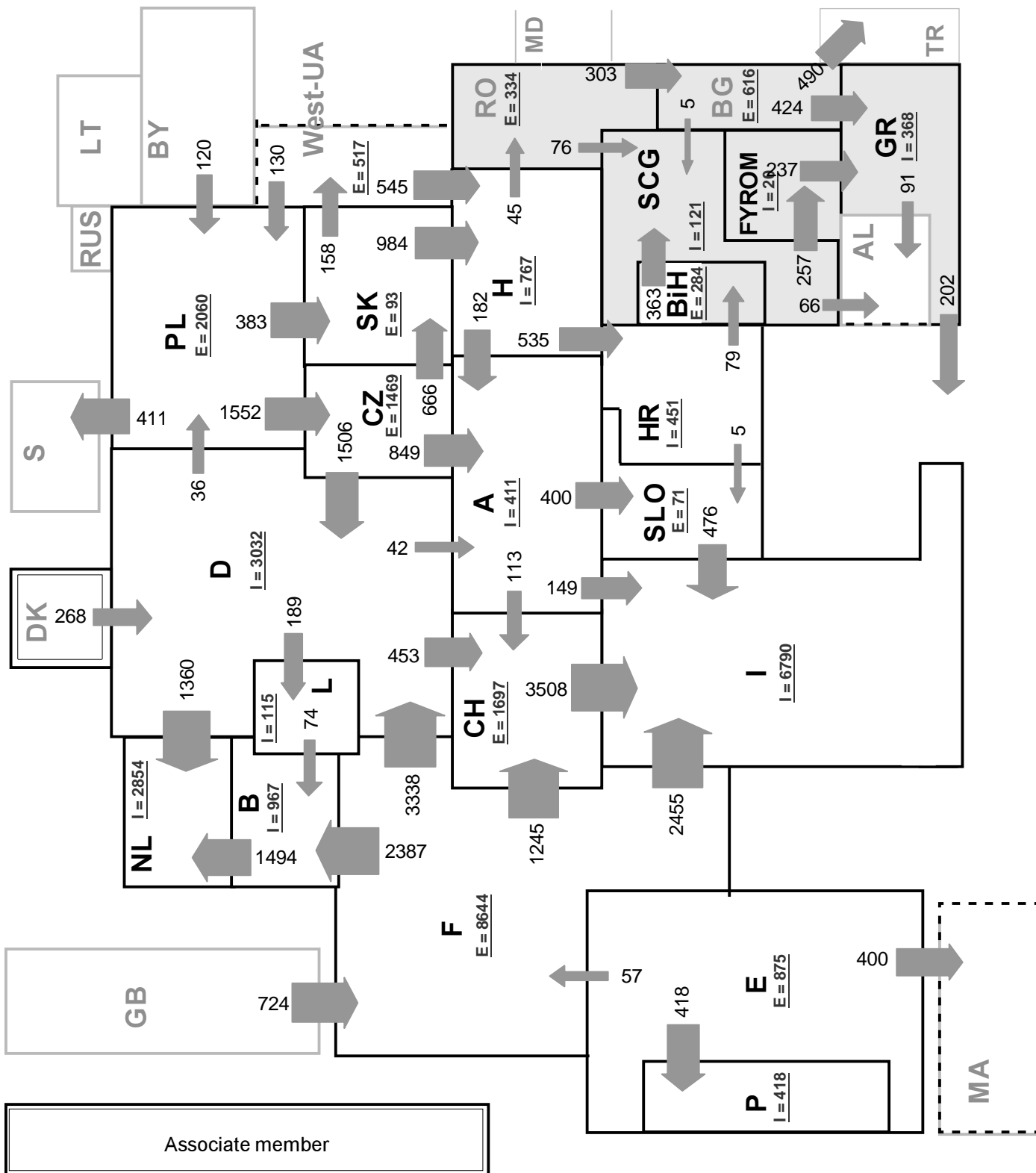
Sum of load flows in MW:

UCTE = 28523 Total = 32280

* Central European Time (CET)

I = Import balance

E = Export balance



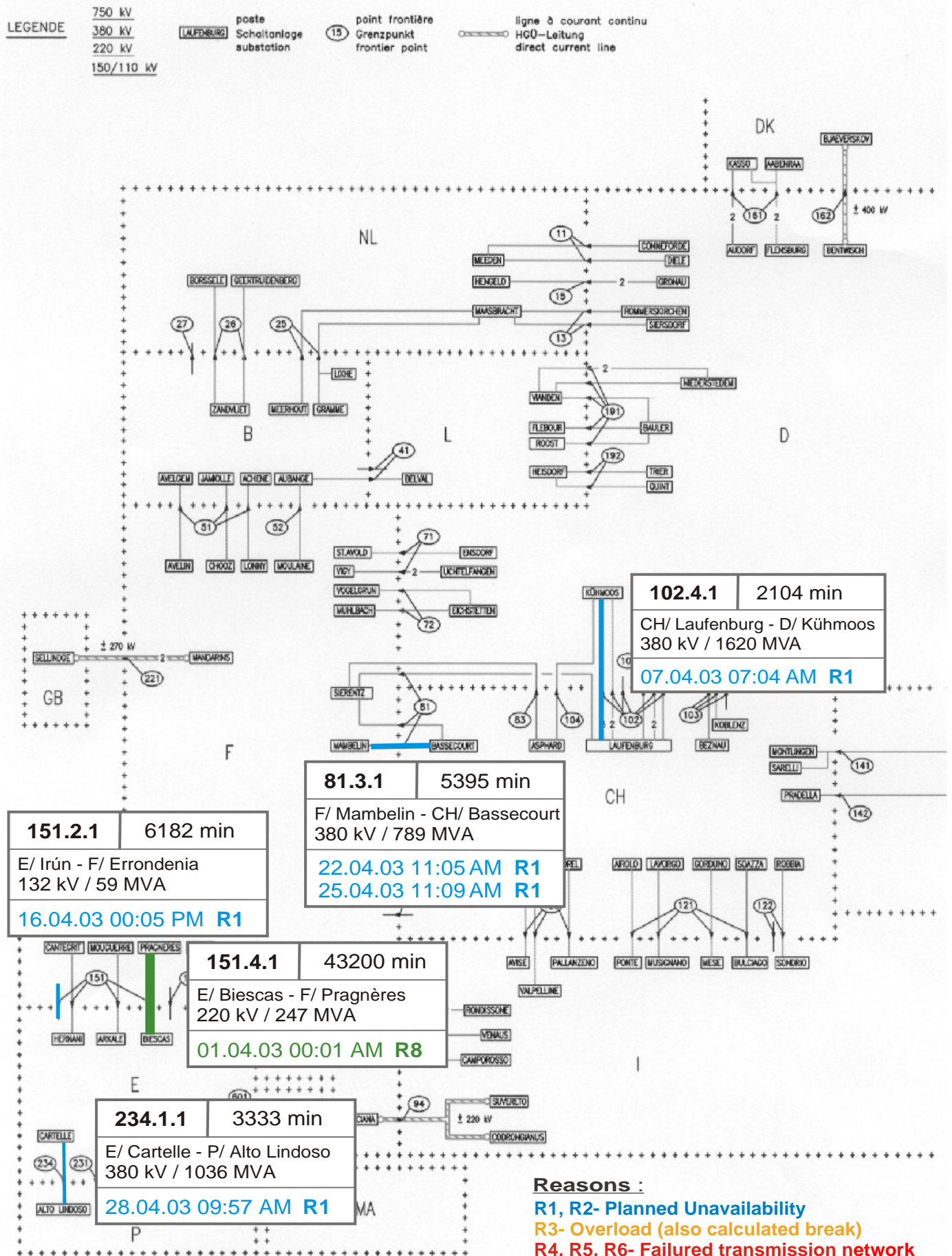
Sum of load flows in MW:

UCTE = 26847 Total = 30250

* Central European Time (CET)

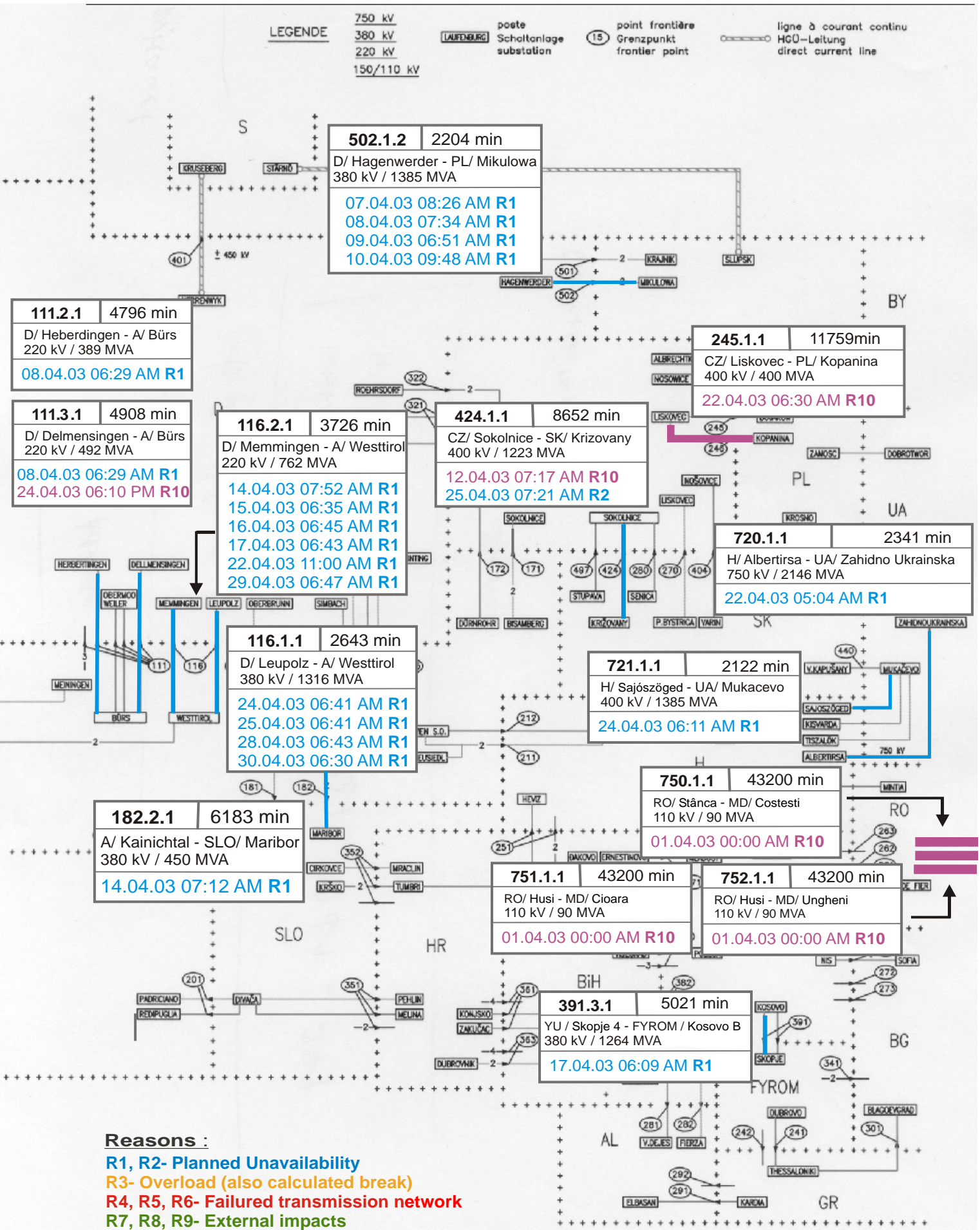
I = Import balance

E = Export balance



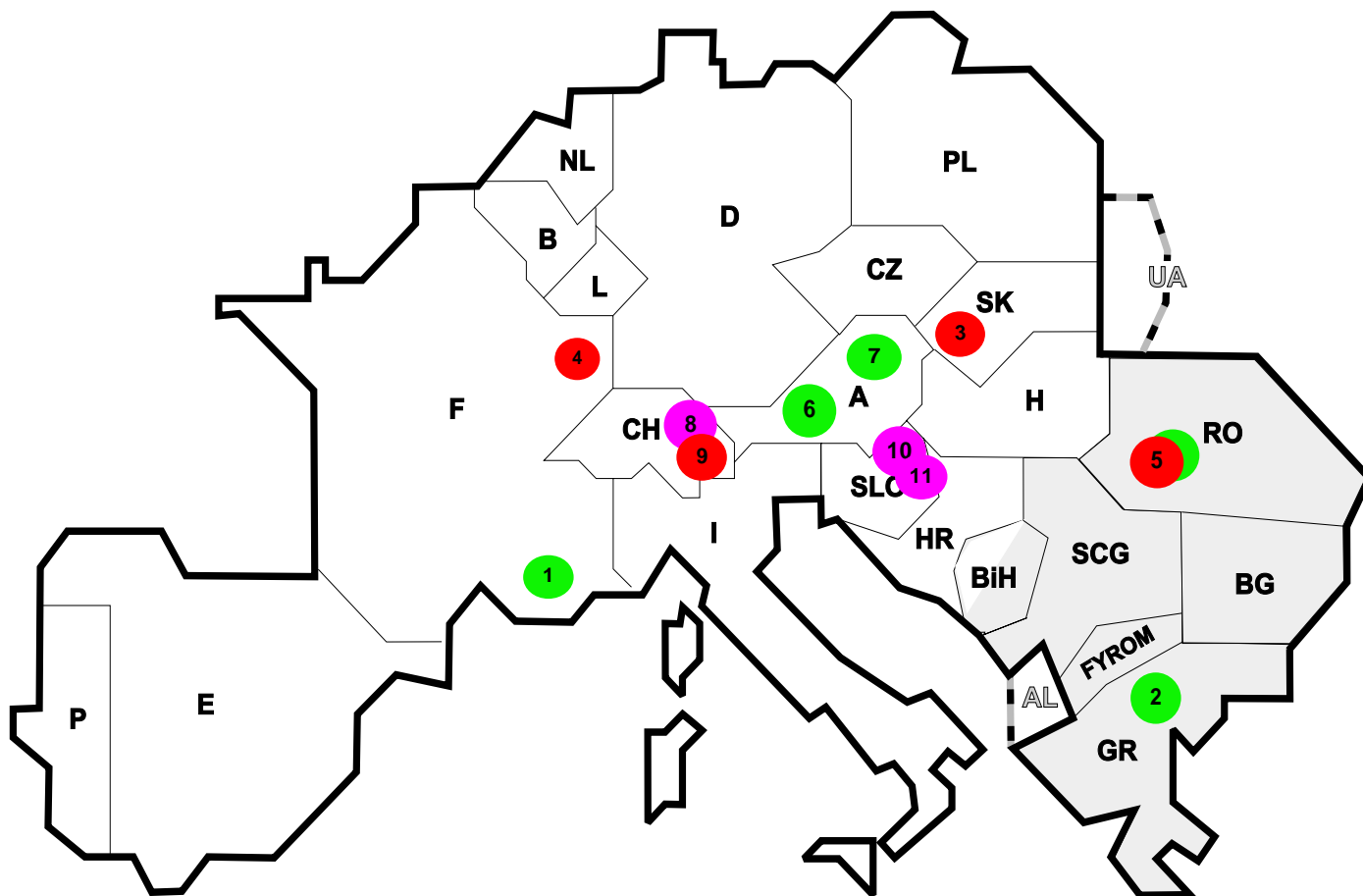
Reasons :

- R1, R2- Planned Unavailability
- R3- Overload (also calculated break)
- R4, R5, R6- Failed transmission network
- R7, R8, R9- External impacts
- R10, R11- Other reasons



Reasons :

- R1, R2- Planned Unavailability
- R3- Overload (also calculated break)
- R4, R5, R6- Failed transmission network
- R7, R8, R9- External impacts
- R10, R11- Other reasons



Reasons:

- R3** **Overload**
- R4, R5, R6** **Failure in the transmission network**
- R7, R8, R9** **External impacts (animals...)**
- R10, R11** **Other reasons**

Nbr	Country	Substation	Reason	Energie not supplied [MWh]	Total loss of power [MW]	Restoration time [min]	Equivalent time of interruption ¹
1	F	Avignon (CNR)	R8	925	56	991	0,07
2	GR	Koumoundourou	R7	50	300	10	3,29
3	SK	H. Zdana	R4	18	104	17	2,07
4	F	Vigy	R6	7	5	85	0,01
5	RO	Tulcea Vest	R5, R8	5	59	5	1,79
6	A	Kledering	R7	0	0	59	0,00
7	A	Wien-Südost	R7	0	0	254	0,00
8	CH	Gösgen	R11	0	0	162	0,00
9	CH	Gösgen	R6	0	0	316	0,00
10	SLO	Podlog	R10	0	0	306	0,00
11	SLO	Podlog	R11	0	0	103	0,00

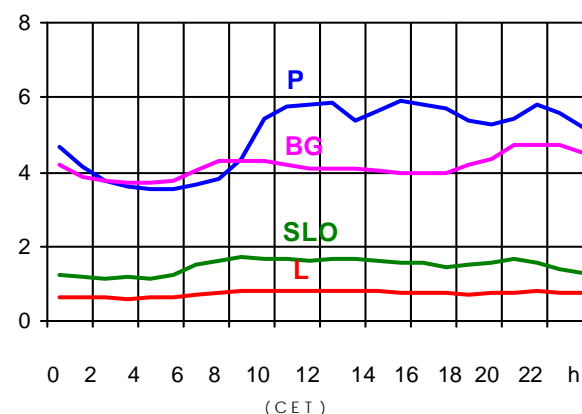
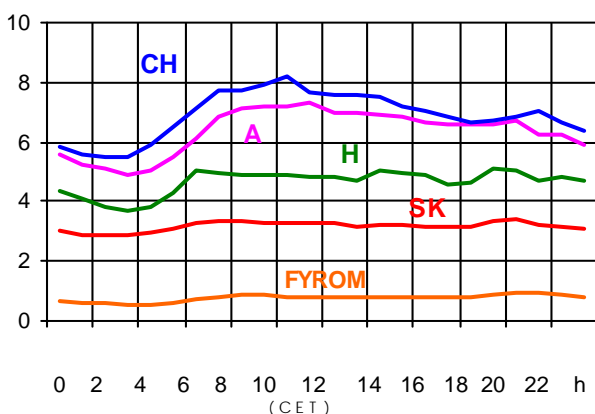
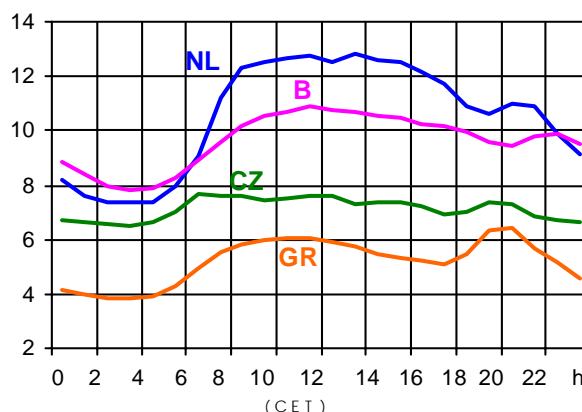
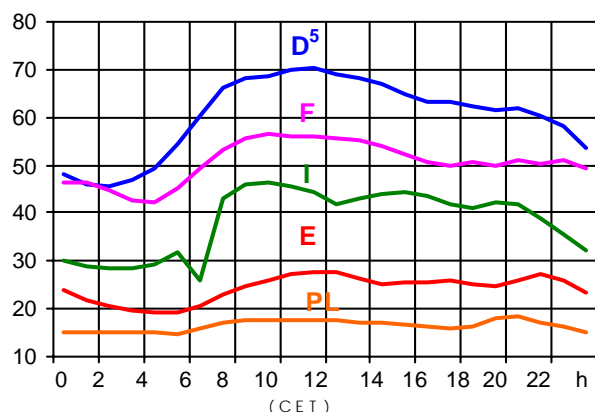
¹ (year [in min] * power loss) / consumption last 12 months

Control area	Prog_exp	Prog_imp	Prog_exp3	Prog_imp3	Prog_exp11	Prog_imp11
B	384249	1055406	482	1497	830	1852
D	3160055	2629581	3978	2407	3533	5962
E	440388	387063	427	1000	963	0
F	7480321	2835340	9601	1754	11203	3352
GR	114496	259943	150	410	150	528
I	34544	4725053	0	6685	0	6790
SLO	455117	418319	717	670	637	573
HR	n.a.	n.a.	n.a.	n.a.	n.a.	n.a.
BiH	n.a.	n.a.	n.a.	n.a.	n.a.	n.a.
FYROM	n.a.	n.a.	n.a.	n.a.	n.a.	n.a.
YU	385007	401379	570	480	708	863
NL	124231	401379	866	1680	115	2958
A	901432	318225	1281	513	1083	569
P	157278	335505	0	213	496	930
CH	2410449	2520278	3157	4983	4686	2994
CZ	1863666	540316	2652	648	2663	1134
H	308261	792859	377	974	512	1278
PL	965884	108588	1137	200	2167	130
SK	513730	330120	606	401	857	702
RO	322080	28656	320	25	570	43
BG	n.a.	n.a.	n.a.	n.a.	n.a.	n.a.
UA	257809	0	340	0	388	0

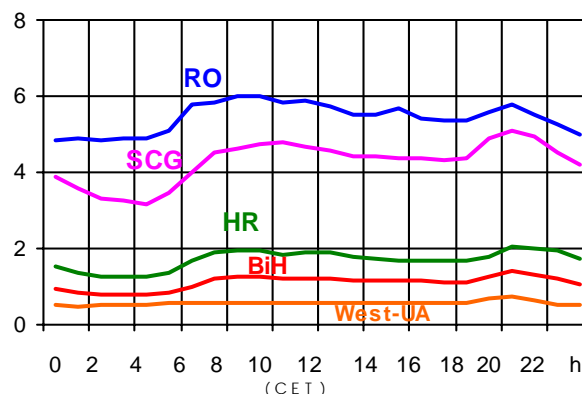
- Control areas can differ from national borders (i.e. German block which includes parts of A, L and DK).
- Values are calculated on an hourly base (MWh).
- This values are not the provisional values entered in the VULCANUS system, but the definitive values after an eventual correction during the actual date.
- Prog_exp: Sum of all positive values of every hour of every border
- Prog_imp: Sum of all negative values of every hour of every border
- Prog_exp3: Sum of all positive values the third Wednesday from 02:00 to 03:00 a.m.
- Prog_imp3: Sum of all negative values the third Wednesday from 02:00 to 03:00 a.m.
- Prog_exp11: Sum of all positive values the third Wednesday from 10:00 to 11:00 a.m.
- Prog_imp11: Sum of all negative values the third Wednesday from 10:00 to 11:00 a.m.

Consumption hourly load curves¹ on 16.04.03

Values in GW



	Peak load MW	Δ % ²	Cons_load_repr ¹ %	Parallel load ³ MW
B	10902	-4,3	100	9717
D	70500	1,0	91	77000
E	27597	-5,8	94	28098
F	56582	-6,2	97	66044
GR ⁴	6407	2,9	93	5648
I	46286	2,5	100	38698
SLO	1692	1,9	95	1713
HR	2049	-1,7	100	2049
BIH	1396	n.a.	100	1521
FYROM	950	n.a.	100	797
SCG	5123	n.a.	96	4687
L	830	2,7	99	801
NL	12800	0,8	90	9816
A	7299	-4,0	82	6403
P	5896	8,6	92	4999
CH	8190	-3,7	100	9991
CZ	7690	-0,7	100	9777
H	5122	0,8	100	4143
PL	18510	2,4	100	19326
SK	3456	-1,3	100	3367
UCTE	303851	-0,4		315088
DK ⁶				2355
RO	5984	n.a.	100	5859
BG	4718	n.a.	100	4634
West-UA	731	n.a.	100	975



¹ Percentage as referred to total values in %

² Variation as compared to corresponding month of the previous year

³ Including autoproduction

⁴ The representativity of data referring to the whole country, including the systems of the Greek islands, is 93%. The representativity of data to the interconnected system is 99%.

⁵ Values estimated on the basis of former data from the German Federal Office for Statistics

⁶ Denmark (Jutland)



Contact

Boulevard Saint-Michel, 15
B-1040 Brussels - Belgium
Tel +3227416940 - Fax +3227416949

info@ucte.org
www.ucte.org