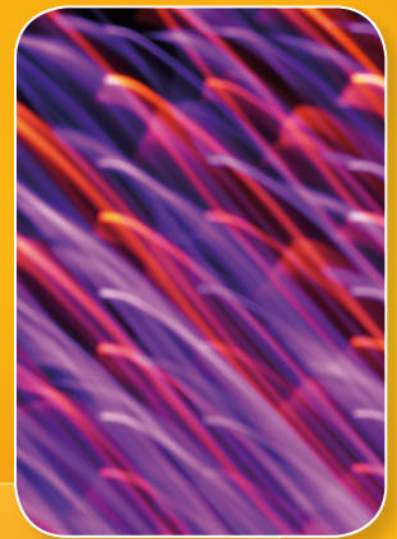


UCTE



March 2007

Monthly provisional values
union for the co-ordination of transmission of electricity

Table of contents		Page
1	Electricity supply situation of the countries	2
2	Physical energy flows	3
3	Monthly consumption	4
4	Monthly consumption variation	6
5	Consumption of the last 12 months	8
6	Variation of the last 12 months' consumption	10
7	Load flows (night)	12
8	Load flows (day)	13
9	Unavailability of international tie lines (major events)	14
10	Network reliability (major events)	16
11	Scheduled exchanges	17
12	Load on the 3 rd Wednesday	18

General remarks and abbreviations used in the tables

- All values of production and consumption in chapter 1, 3&4, 5&6 and 12 are calculated to represent 100% of the national values.
- DK_W Denmark West represents the Western part of Denmark synchronously interconnected with UCTE (Jutland and Funen).
- UA_W Ukraine West represents the so-called Burshtyn Island synchronously interconnected with UCTE.
- CET Central European Time
- The Bulgarian values of production and consumption are gross values.

1

Electricity supply situation of the countries

March 2007

Countries	Net production in GWh							Exchange balance in GWh	Pump in GWh	Consumption in GWh			
	Therm. nuclear	Therm. conv.	Hydro prod	Other renew.	Of which wind	Not identify	Total			monthly	var. [%]	last 12 months	var. [%]
AT	0	1632	2833	0	0	649	5114 ¹	997	215	5896	3,4	66314	1,3
BA	0	708	383	0	0	0	1091	-139	0	952	-3,4	10895	-3,3
BE ²	3838	3175	158	256	43	0	7427 ¹	601	144	7884	-4,3	88974	0,2
BG	1409	1681	227	0	0	0	3317	-203	62	3052	-11,5	33923	-7,4
CH	2302	195	2391	96	1	0	4984 ¹	796	108	5672	-5,0	62291	-2,1
CZ	1773	5187	290	23	11	0	7273 ¹	-1334	58	5881	-4,8	63055	-1,0
DE	12925	33225	1968	5805	4254	0	53923 ¹	-2928	702	50293	-1,7	556485	-0,7
ES	4954	11206	4253	3123	2936	0	23536 ¹	-252	429	22855	2,3	260687	2,4
FR	36738	6367	6825	690	348	0	50620 ¹	-5571	566	44483	-5,1	467297	-4,2
GR	0	3745	193	154	142	0	4092 ¹	485	112	4465	2,1	53814	0,8
HR	0	496	534	5	4	0	1035 ¹	463	13	1485	-5,2	16523	-1,2
HU ³	977	2113	0	0	0	0	3090 ¹	401	0	3491	-2,2	40418	1,6
IT	0	21291	2757	864	415	0	24912 ¹	4701	623	28990	-1,8	336325	0,8
LU	0	283	86	15	7	0	384	326	100	610	4,6	6656	3,9
ME	0	119	174	0	0	0	293	106	0	399	n.a.	1243	n.a.
MK	0	495	94	0	0	0	589 ¹	185	0	774	-3,5	8149	-1,3
NL	361	7880	0	725	341	0	8966 ¹	1454	0	10420	1,3	116512	1,1
PL	0	12227	315	48	39	0	12590 ¹	-232	34	12324	-0,7	136343	2,6
PT	0	1755	1618	619	433	0	3992 ¹	499	61	4430	-0,8	50738	0,9
RO	488	3088	1460	0	0	0	5036 ¹	-370	7	4659	-2,7	52645	1,5
RS	0	2319	1103	0	0	0	3422	115	32	3505	n.a.	10621	n.a.
SI	517	472	250	0	0	0	1239	-73	0	1166	-0,8	13261	2,4
SK	1421	642	537	25	1	0	2625 ¹	-168	23	2434	-2,8	26991	1,8
UCTE	67703	120301	28449	12448	8975	649	229550¹	-141	3289	226120	-2,2	2509652⁴	-0,5
DK_W	0	1436	4	701	572	0	2141 ¹	-230	0	1911	-4,7	21635	0,3
UA_W	0	695	20	0	0	0	715 ¹	-342	0	373	-15,2	4183	-3,6

¹ Including deliveries from industry

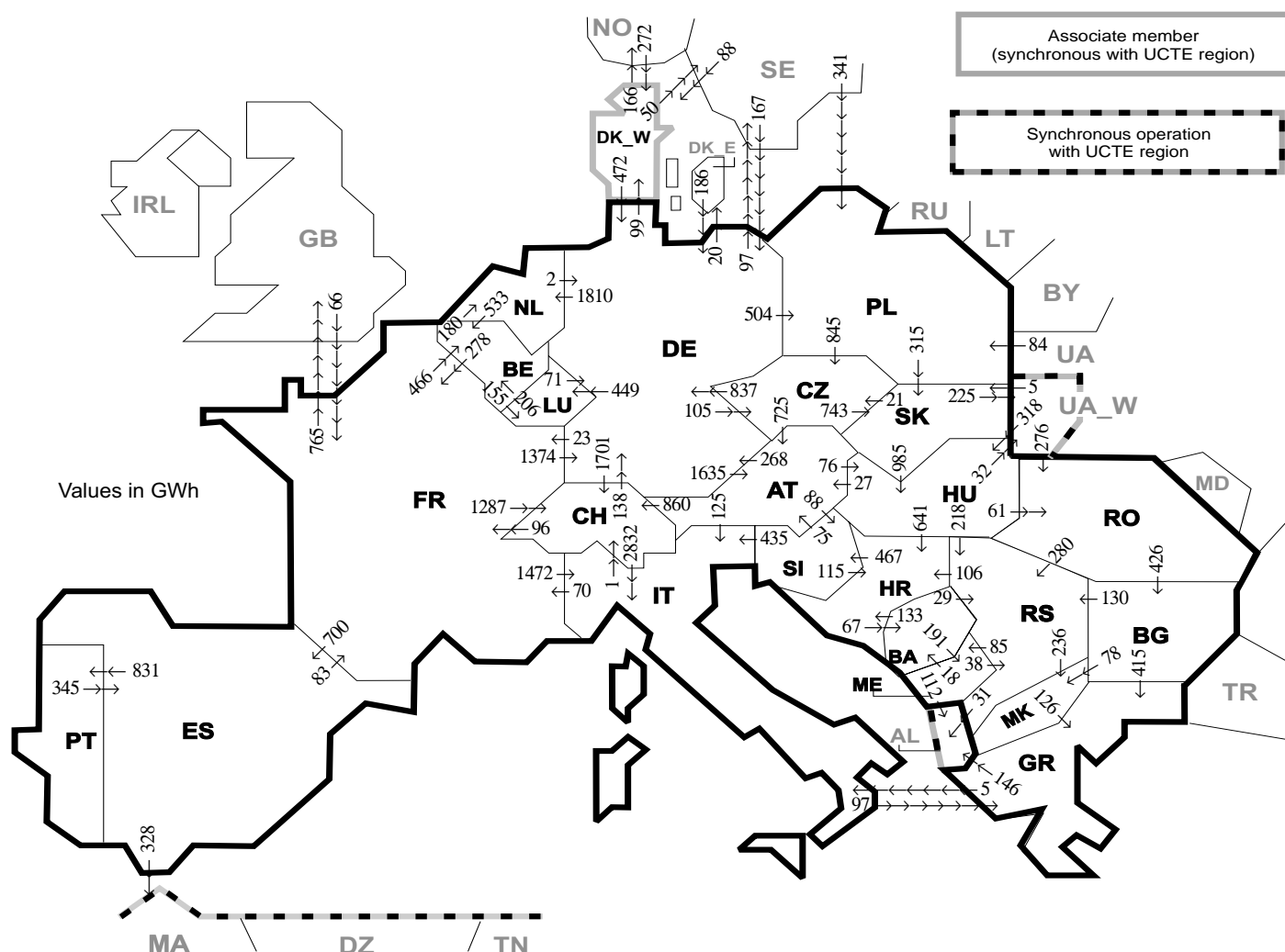
² The reported figures are best estimates based on actual measurements and extrapolations

³ Data on hydro, other renewable, not clearly identifiable production are not yet available

⁴ Including consumption values CS until December 2006

All representativities of the national production and consumption values used to calculate values at a representativity of 100% as stated in the table above

Countries	AT	BA	BE	BG	CH	CZ	DE	ES	FR	GR	HR	HU	IT	LU	ME	MK	NL	PL	PT	RO	RS	SI	SK	DK_W	UA_W	
Production																										
Therm.nuclear	100	100	100	100	100	100	100	100	100	100	100	100	100	100	100	100	100	100	100	100	100	100	100	100	100	100
Thermal conv.	100	100	100	100	100	100	100	97	100	100	100	100	100	100	100	100	100	100	92	100	100	100	100	100	100	100
Hydro prod	100	100	100	100	100	100	100	100	100	100	100	100	100	100	100	100	100	100	100	100	100	100	100	100	100	100
Other renew.	100	100	100	100	100	100	100	95	100	100	100	100	100	100	100	100	100	100	100	100	100	100	100	100	100	100
Nbt identify	100	100	100	100	100	100	100	100	100	100	100	100	100	100	100	100	100	100	100	100	100	100	100	100	100	100
Consumption	100	100	100	100	100	100	100	98	100	100	100	100	100	100	100	100	100	100	97	100	100	95	100	100	100	100



Exporting countries	AT	BA	BE	BG	CH	CZ	DE	ES	FR	GR	HR	HU	IT	LU	ME	MK	NL	PL	PT	RO	RS	SI	SK	DK_W	UA_W	Other III ¹	Sum export
AT	-	-	-	-	860	0	268	-	-	-	-	76	125	-	-	-	-	-	-	-	-	88	-	-	-	-	1417
BA	-	-	-	-	-	-	-	-	-	-	133	-	-	-	191	-	-	-	-	-	29	-	-	-	-	-	353
BE	-	-	-	-	-	-	-	-	278	-	-	-	-	155	-	180	-	-	-	-	-	-	-	-	-	-	613
BG	-	-	-	-	-	-	-	-	-	415	-	-	-	-	78	-	-	-	0	130	-	-	-	-	-	0	623
CH	0	-	-	-	-	138	-	96	-	-	-	2832	-	-	-	-	-	-	-	-	-	-	-	-	-	3066	
CZ	725	-	-	-	-	-	-	-	837	-	-	-	-	-	-	-	0	-	-	-	-	743	-	-	-	2305	
DE	1635	-	-	-	1701	105	-	23	-	-	-	449	-	-	1810	504	-	-	-	-	-	-	99	-	117	6443	
ES	-	-	-	-	-	-	-	83	-	-	-	-	-	-	-	-	-	831	-	-	-	-	-	-	328	1242	
FR	-	-	466	-	1287	-	1374	700	-	-	-	1472	-	-	-	-	-	-	-	-	-	-	-	-	-	765	6064
GR	-	-	-	0	-	-	-	-	-	-	-	5	-	-	0	-	-	-	-	-	-	-	-	-	-	146	151
HR	-	67	-	-	-	-	-	-	-	-	0	-	-	-	-	-	-	-	-	-	0	467	-	-	-	534	
HU	27	-	-	-	-	-	-	-	-	-	641	-	-	-	-	-	-	-	-	61	218	0	-	32	-	979	
IT	0	-	-	-	1	-	-	-	70	97	-	-	-	-	-	-	-	-	-	-	0	-	-	-	-	168	
LU	-	-	206	-	-	-	71	-	-	-	-	-	-	-	-	-	-	-	-	-	-	-	-	-	-	277	
ME	-	18	-	-	-	-	-	-	-	-	-	-	-	-	-	-	-	-	-	-	-	38	-	-	112	168	
MK	-	-	-	0	-	-	-	-	-	-	126	-	-	-	-	-	-	-	-	-	-	0	-	-	-	126	
NL	-	-	533	-	-	-	2	-	-	-	-	-	-	-	-	-	-	-	-	-	-	-	-	-	-	535	
PL	-	-	-	-	845	0	-	-	-	-	-	-	-	-	-	-	-	-	-	-	-	-	315	-	0	1160	
PT	-	-	-	-	-	-	345	-	-	-	-	-	-	-	-	-	-	-	-	-	-	-	-	-	-	345	
RO	-	-	-	426	-	-	-	-	-	-	0	-	-	-	-	-	-	-	-	-	280	-	-	-	0	706	
RS	-	0	-	0	-	-	-	-	-	-	106	0	-	85	236	-	-	-	0	-	-	-	-	-	31	458	
SI	75	-	-	-	-	-	-	-	-	-	115	435	-	-	-	-	-	-	-	-	-	-	-	-	-	625	
SK	-	-	-	-	-	21	-	-	-	-	985	-	-	-	-	-	-	0	-	-	-	-	-	225	-	1231	
DK_W	-	-	-	-	-	-	472	-	-	-	-	-	-	-	-	-	-	-	-	-	-	-	-	-	216	688	
UA_W	-	-	-	-	-	-	-	-	-	-	-	318	-	-	-	-	-	-	276	-	-	5	-	-	-	599	
Other III ¹	-	-	-	0	-	-	353	0	66	0	-	-	-	-	0	-	425	-	0	0	-	-	360	-	-	1204	
Sum imp	2462	85	1205	426	3849	971	3515	1045	616	638	995	1379	4869	604	276	314	1990	929	831	337	695	555	1063	459	257	1715	32080

Sum of physical energy flows between UCTE countries = 27734GWh Total physical energy flows = 32080GWh

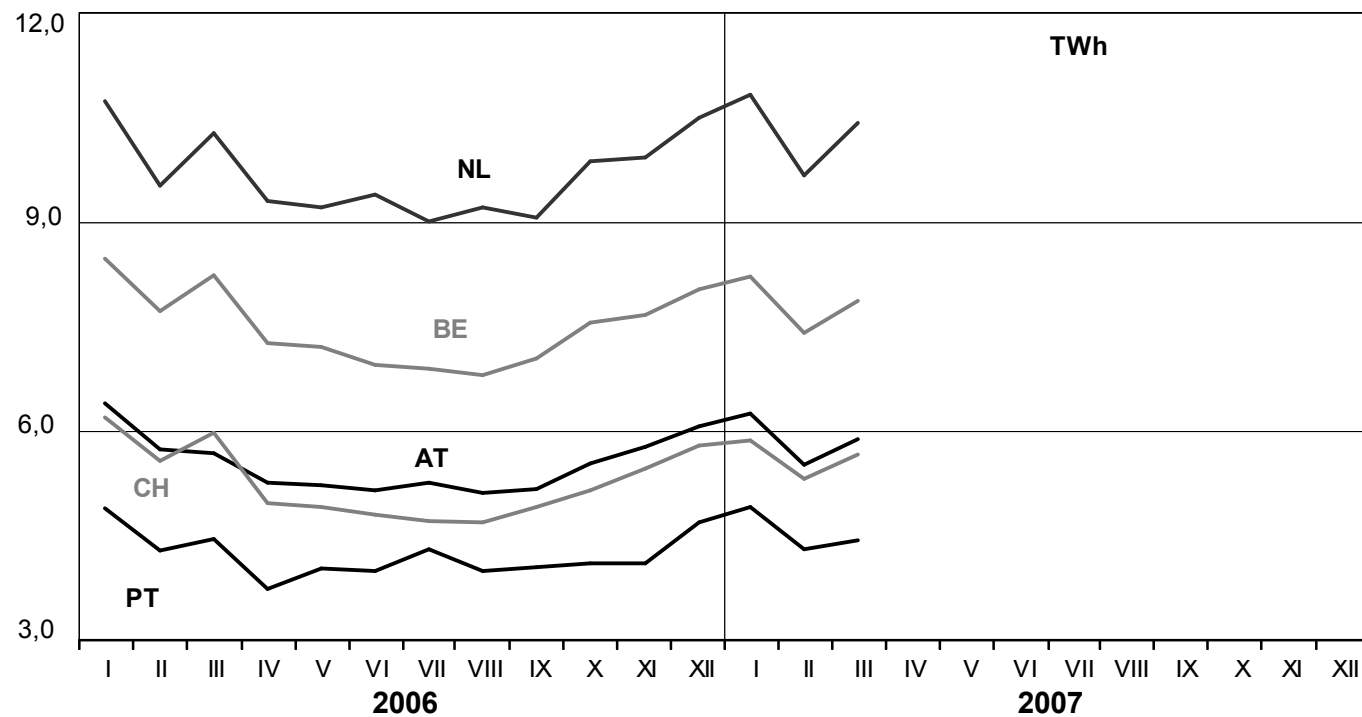
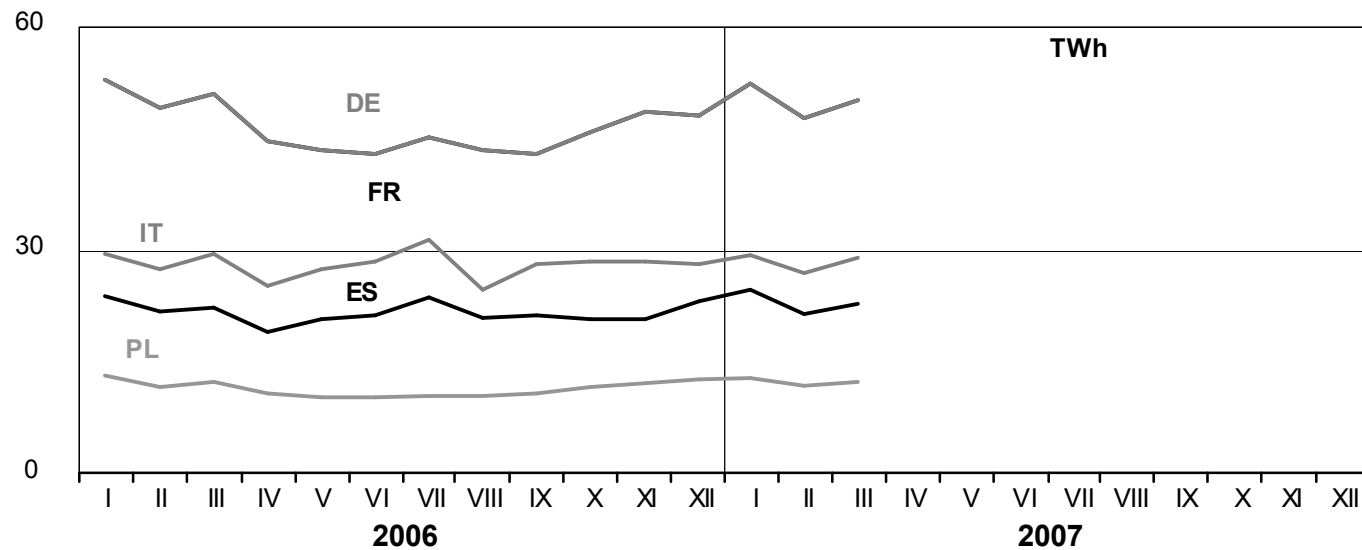
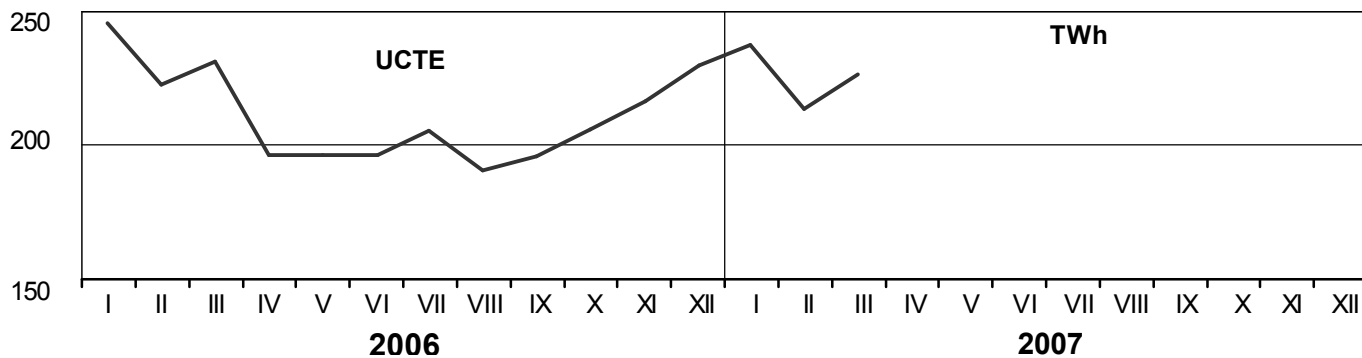
¹ Other III: Albania, Belarus, Denmark East, Great Britain, Morocco, Republic of Moldavia, Norway, Sweden, Republic of Turkey and Ukraine

These physical energy flows were measured on the cross-frontier transmission lines (≤ 110 kV) listed in table 9 of the Statistical Yearbook. These values may differ from the official statistics and the exchange balances in chapter 1.

3

Monthly consumption

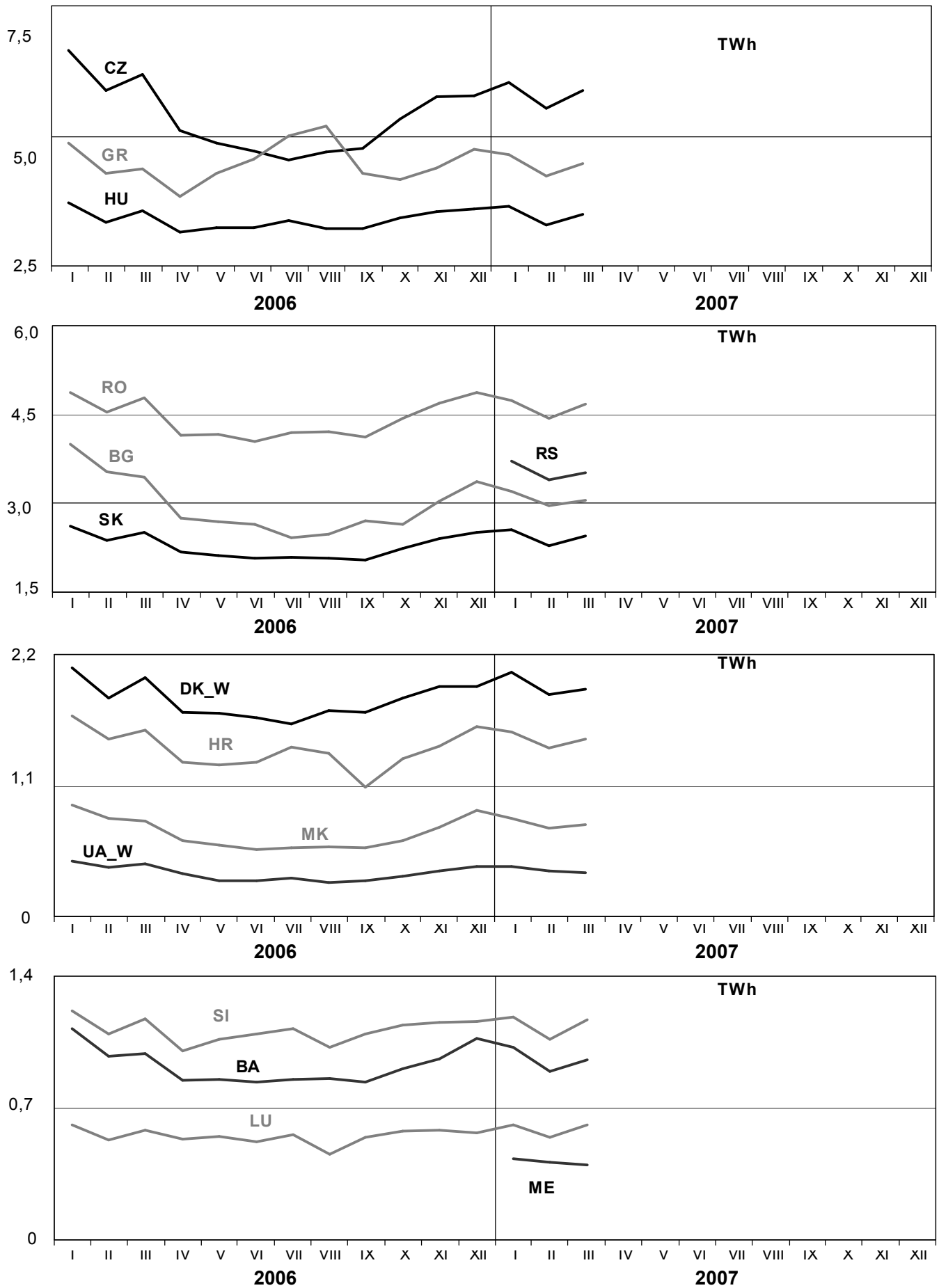
March 2007



3

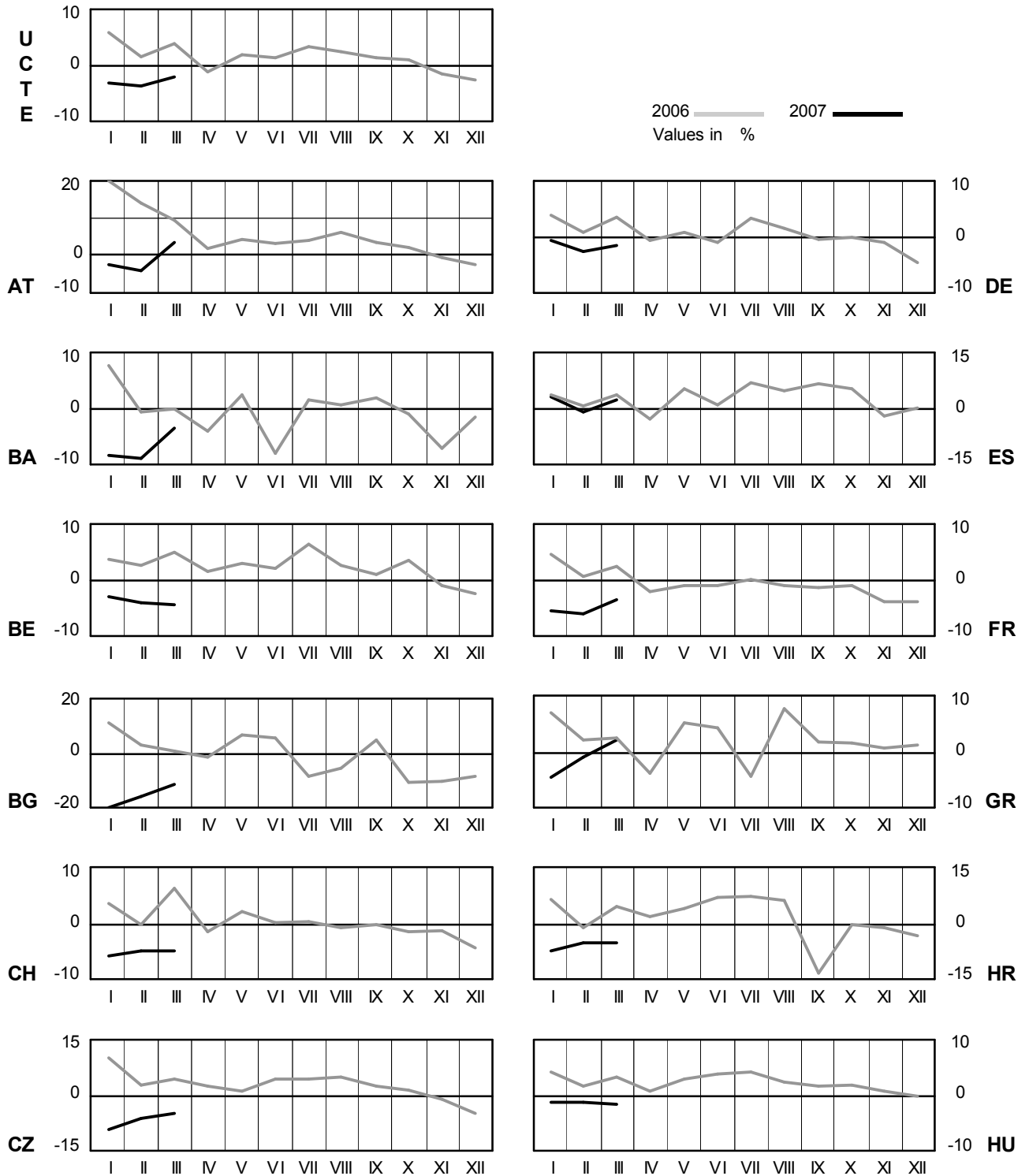
Monthly consumption

March 2007



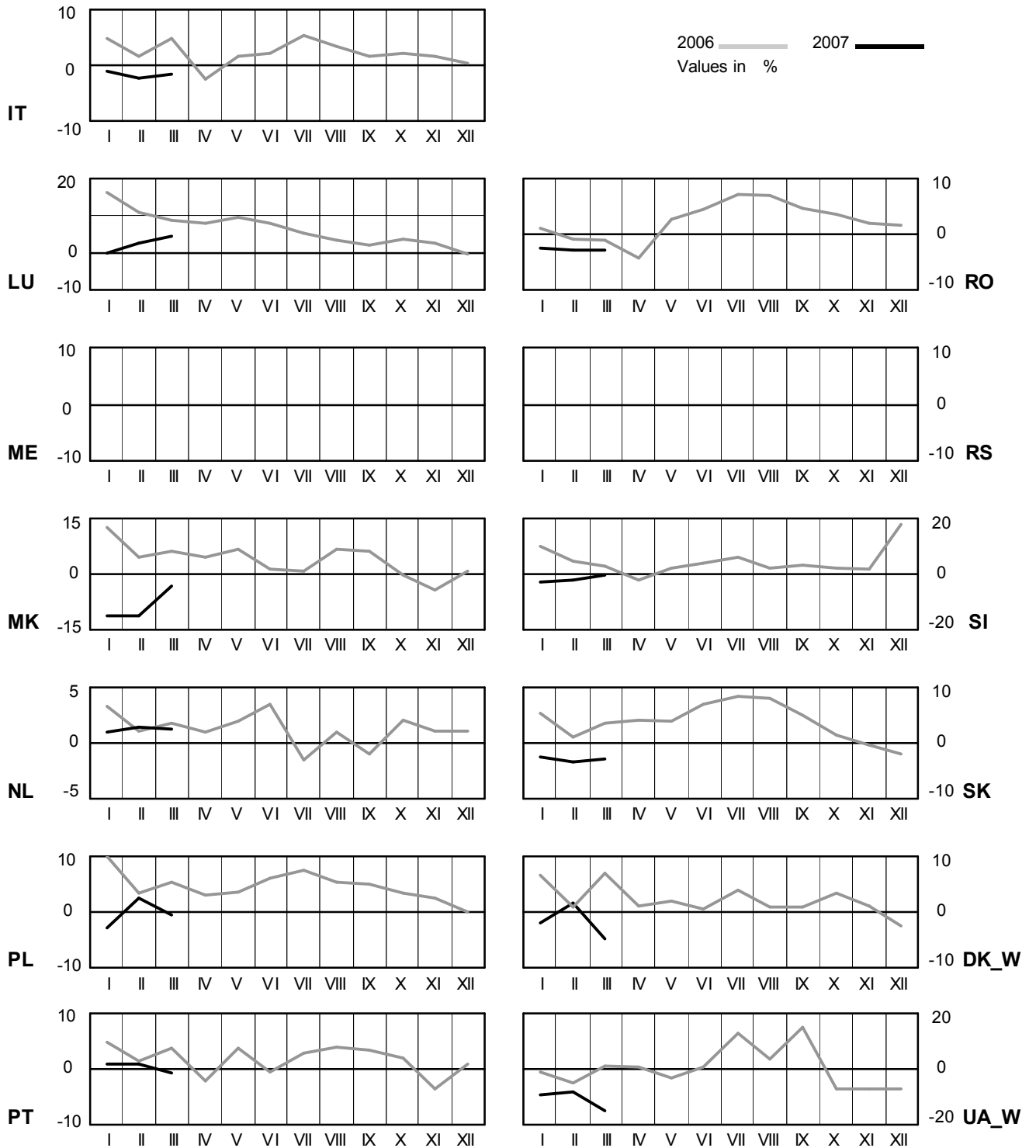
4 Monthly consumption variation

March 2007



4 Monthly consumption variation

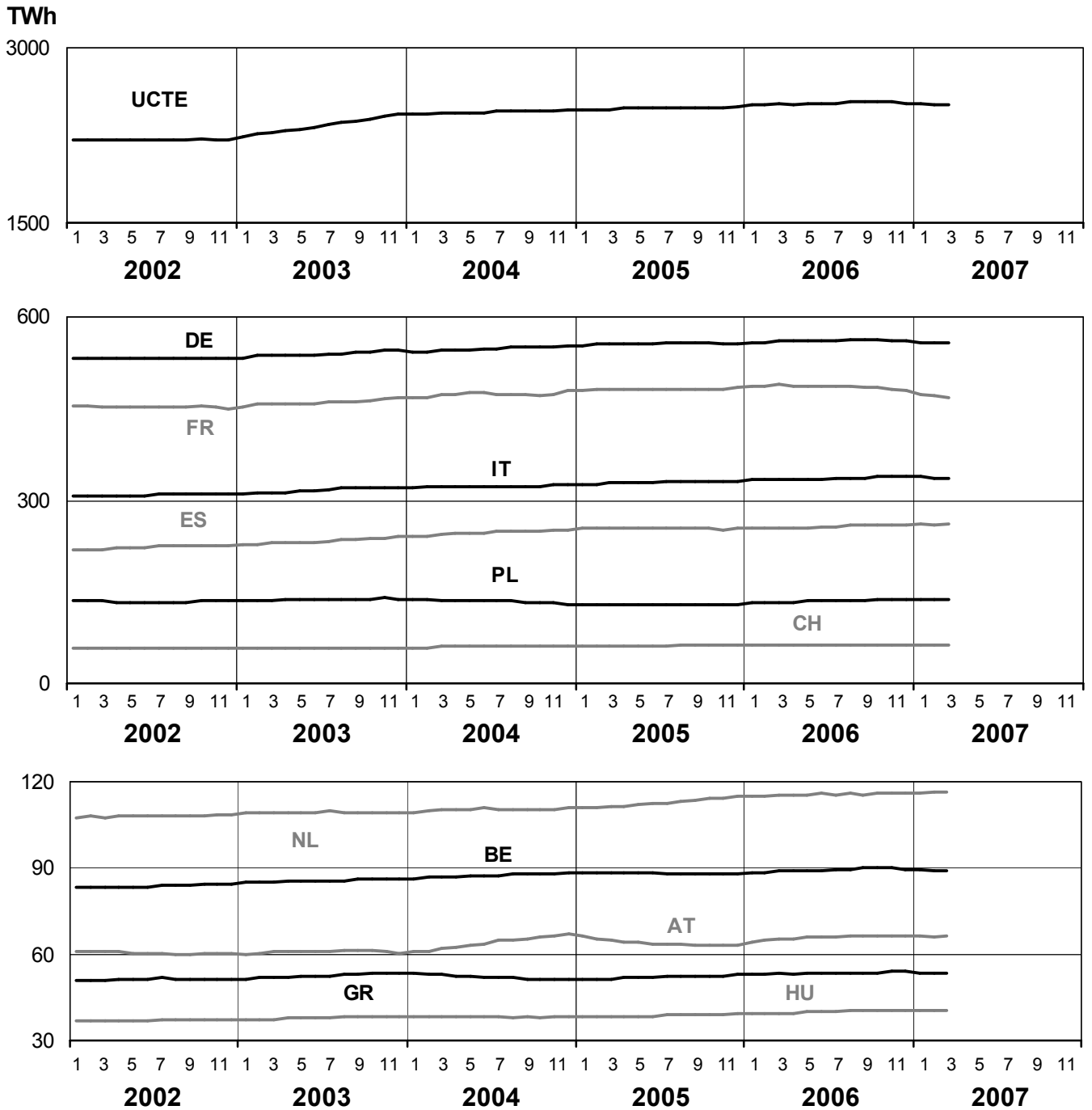
March 2007



5

Consumption of the last 12 months

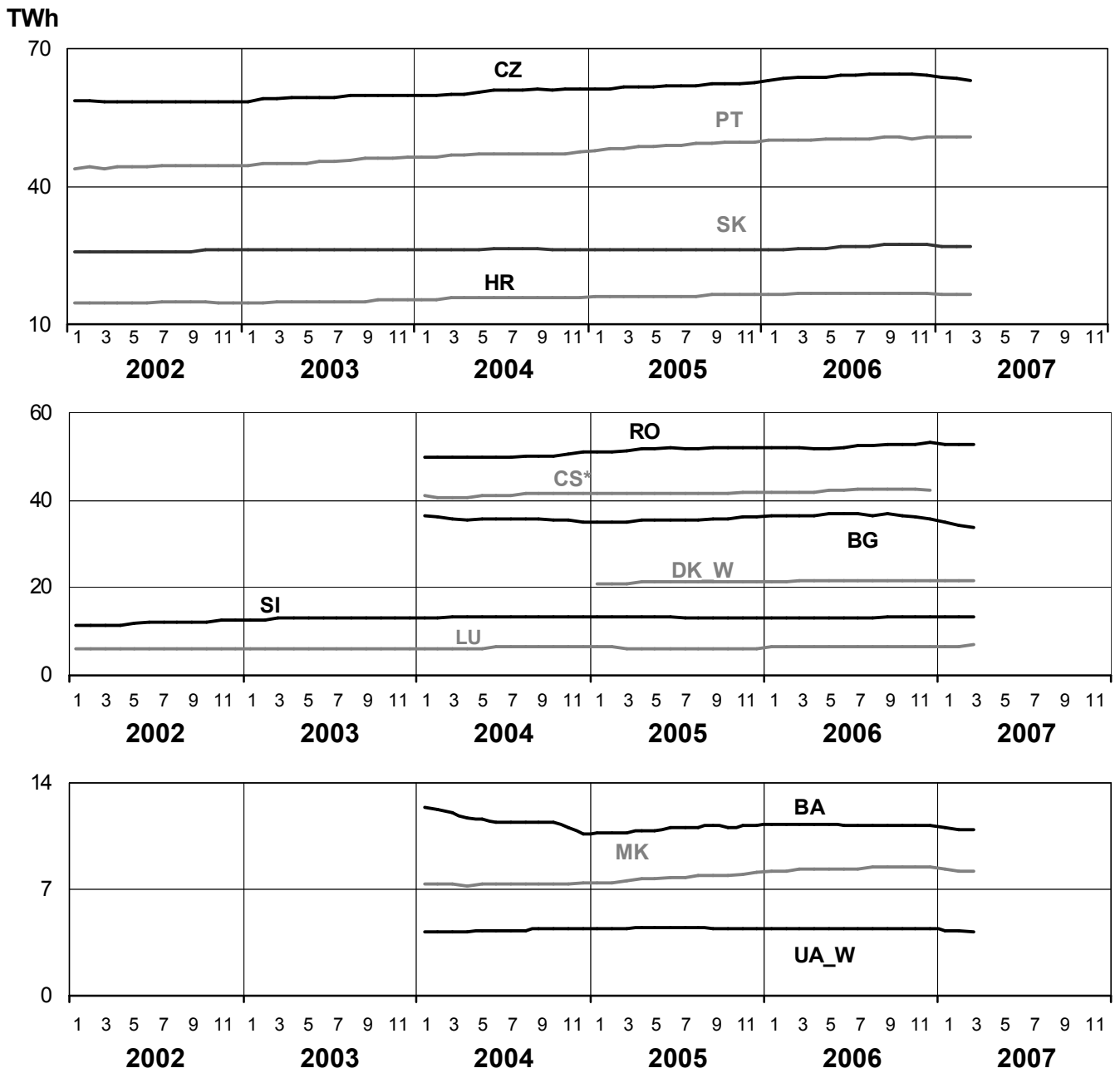
March 2007



5

Consumption of the last 12 months

March 2007

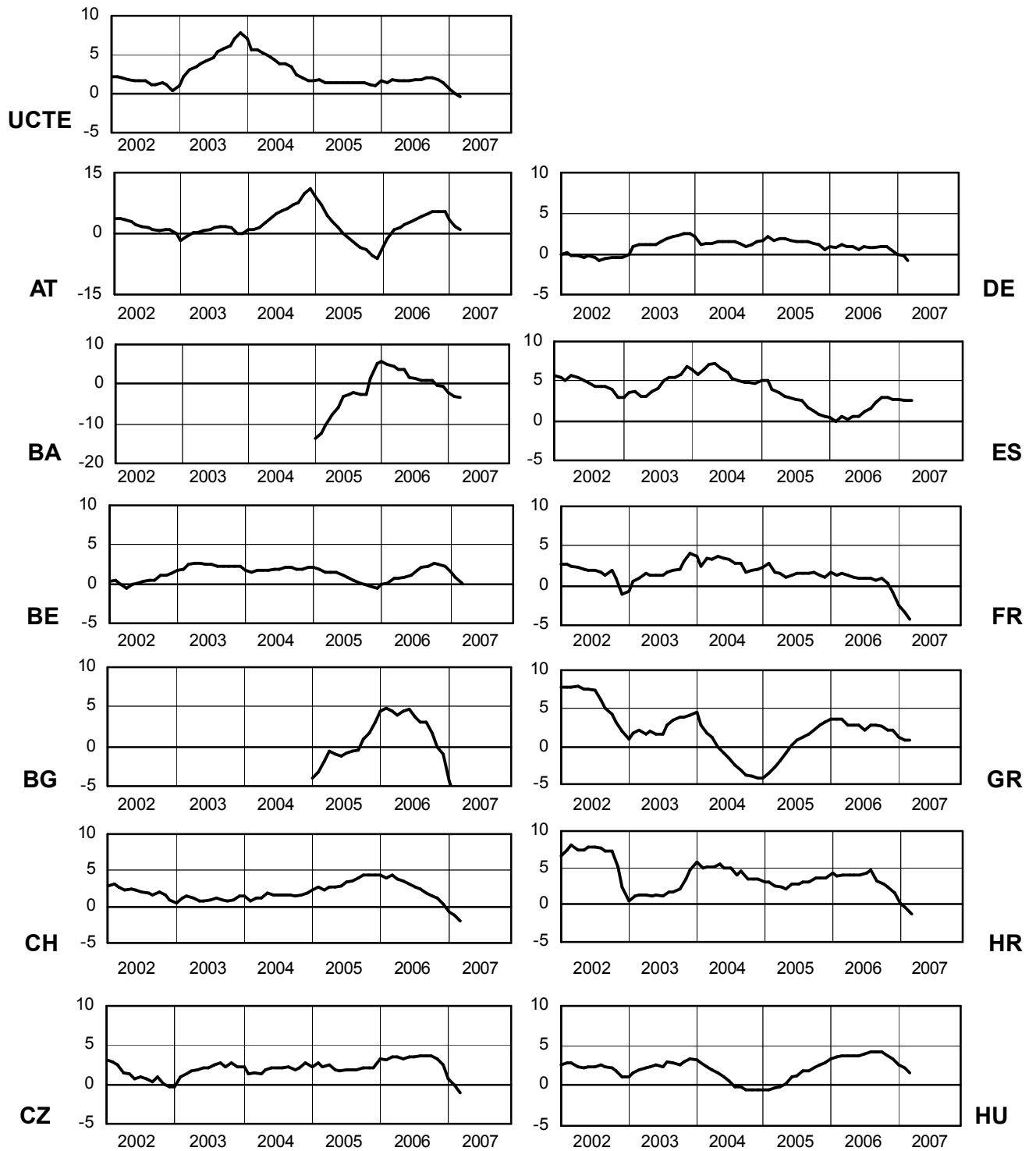


* CS consumption values until December 2006; from 2007 on ME and RS as separate countries

6

Variation of the last 12 months' consumption in %

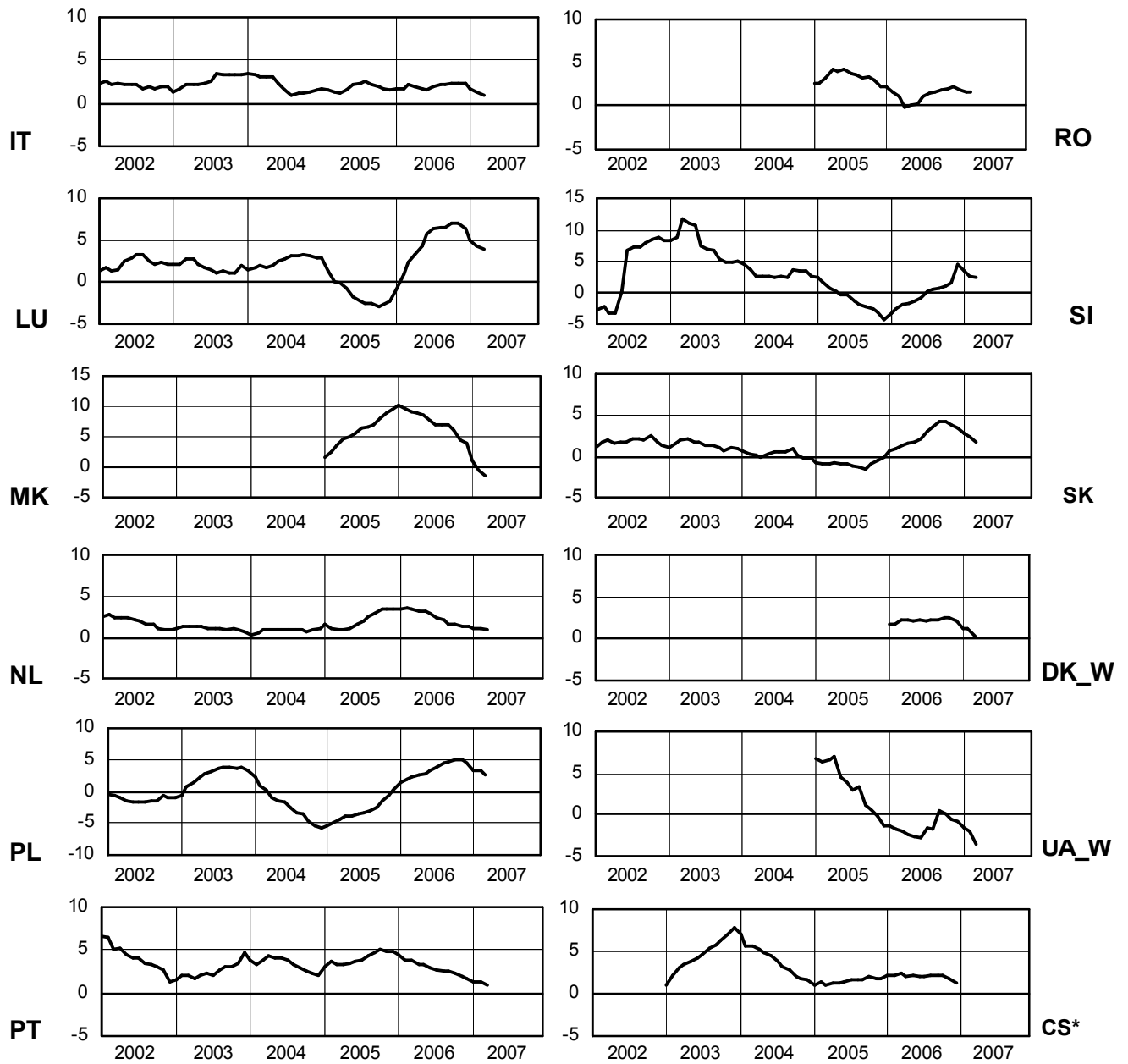
March 2007



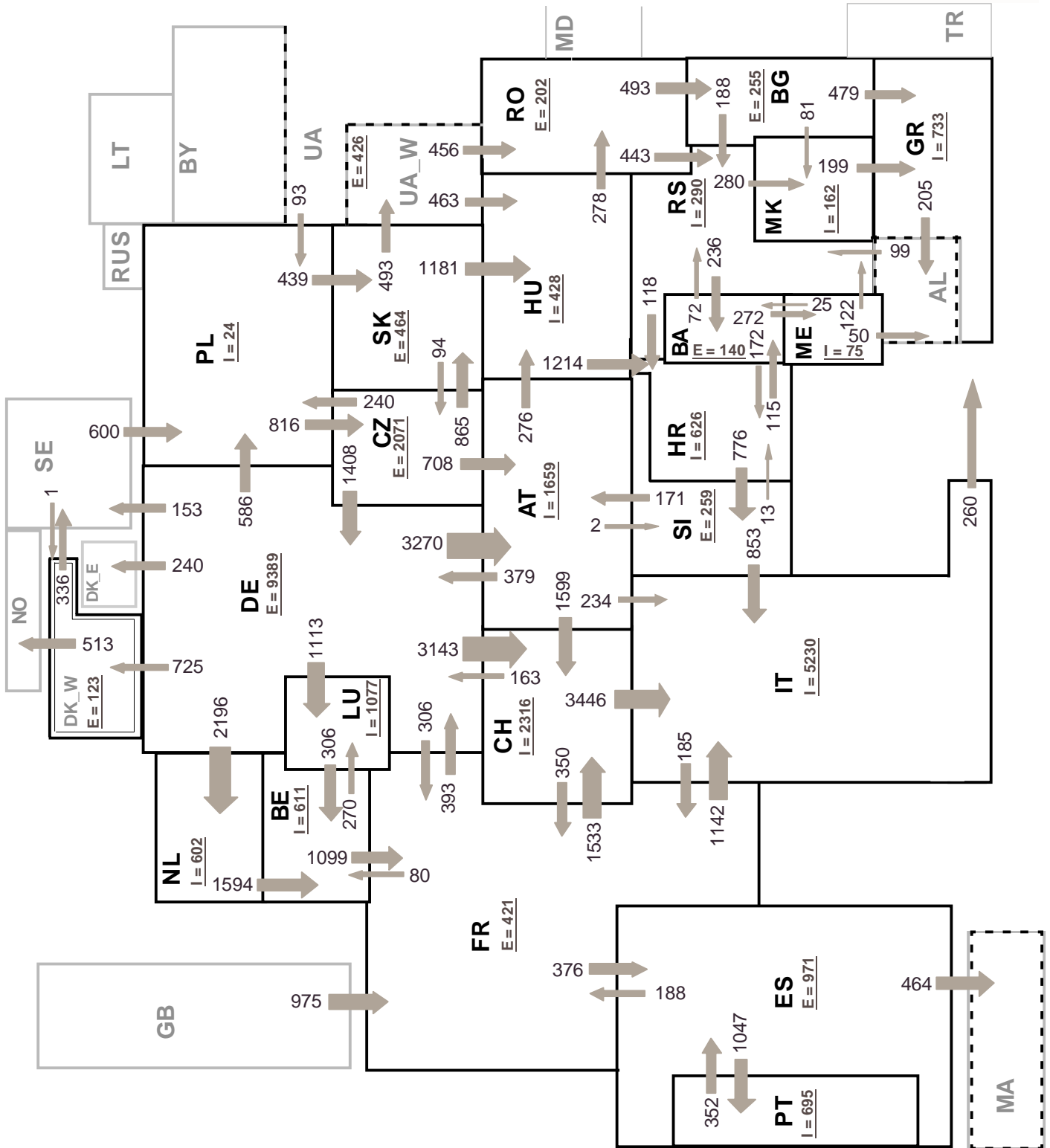
6

Variation of the last 12 months' consumption in %

March 2007



* CS consumption values until December 2006; from 2007 on ME and RS as separate countries



Associate member

Synchronous operation with UCTE region

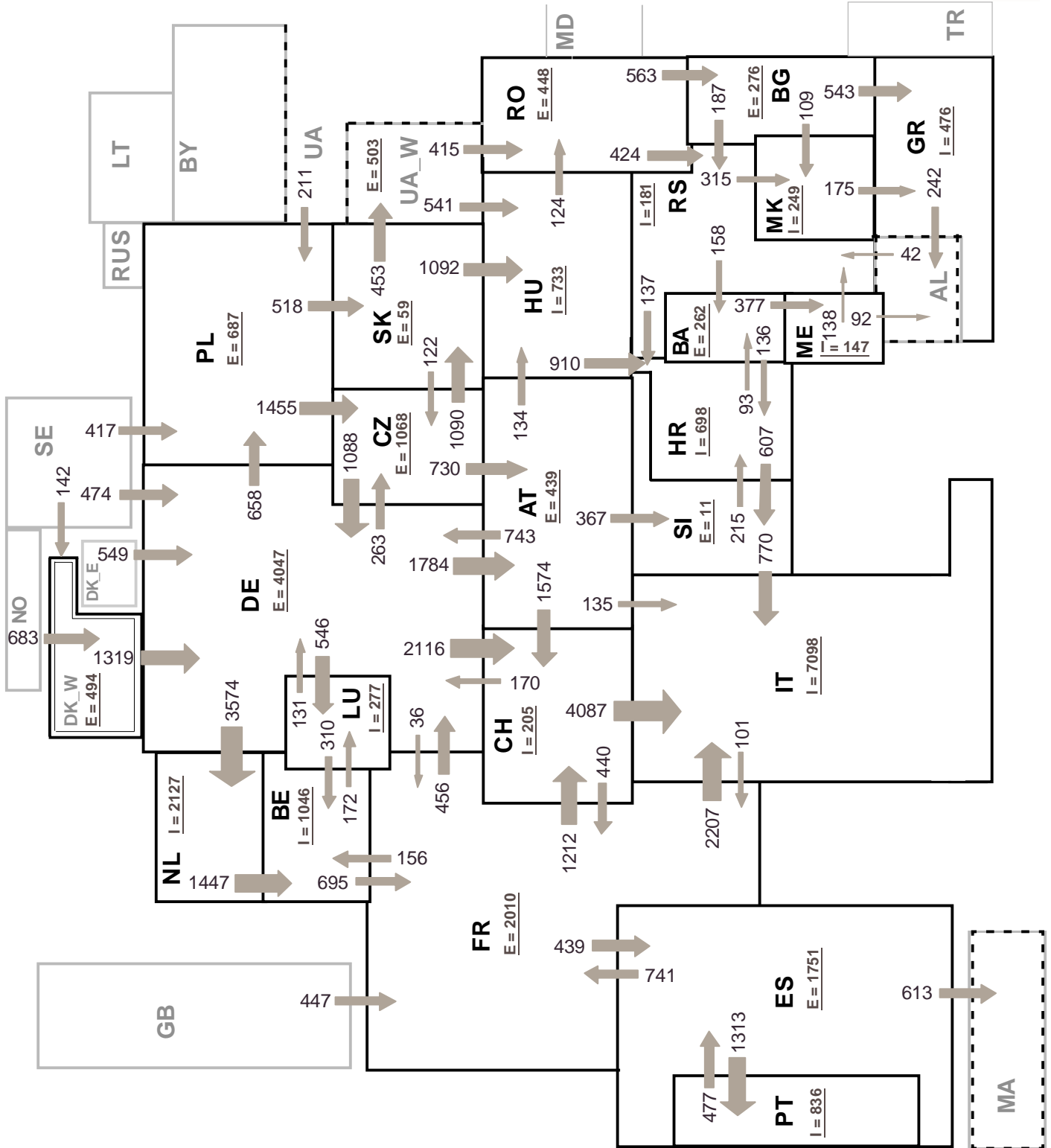
Sum of load flows in MW:

UCTE = 38098 MW

Total = 43865 MW

I = Import balance

E = Export balance



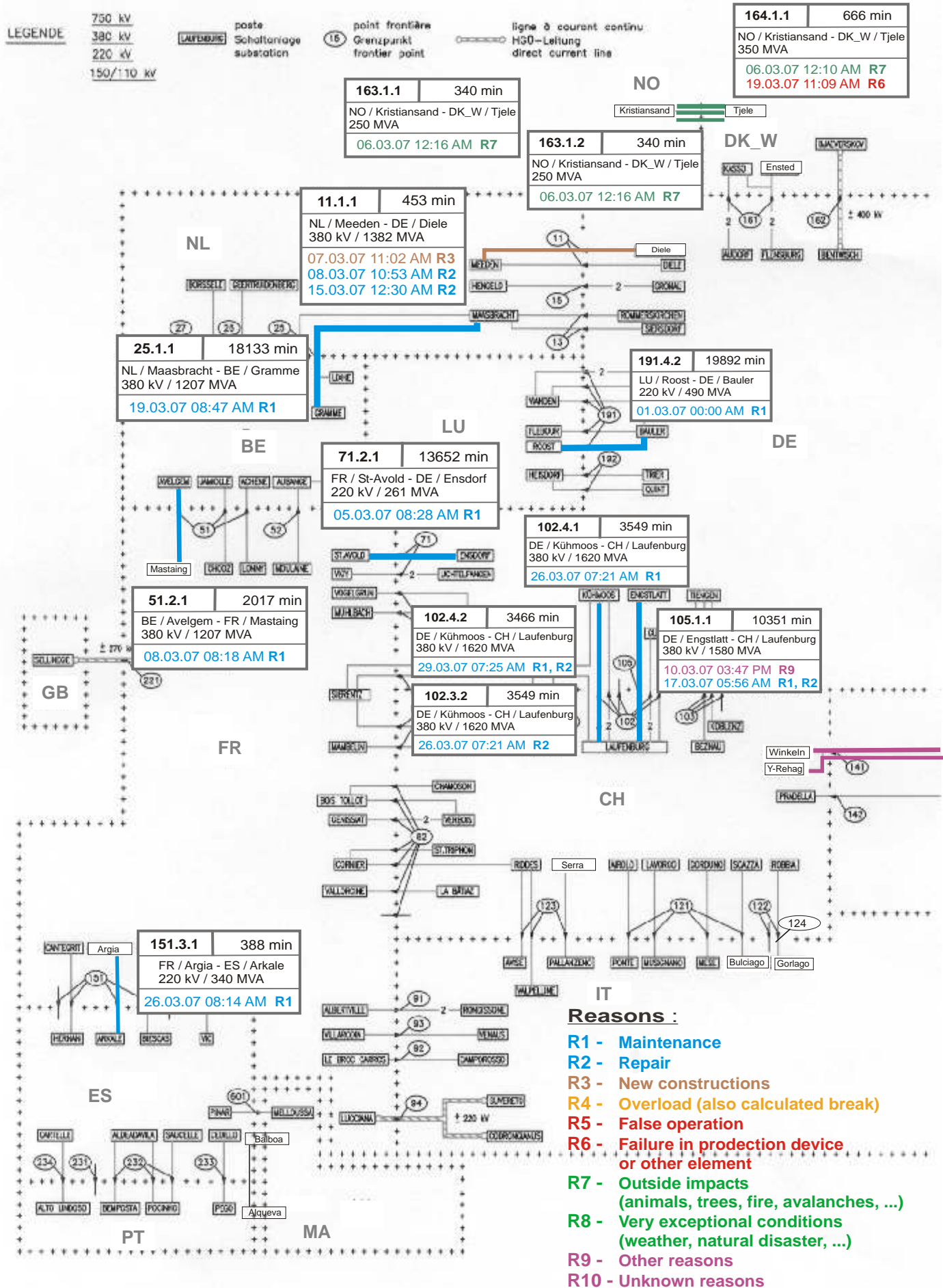
Associate member

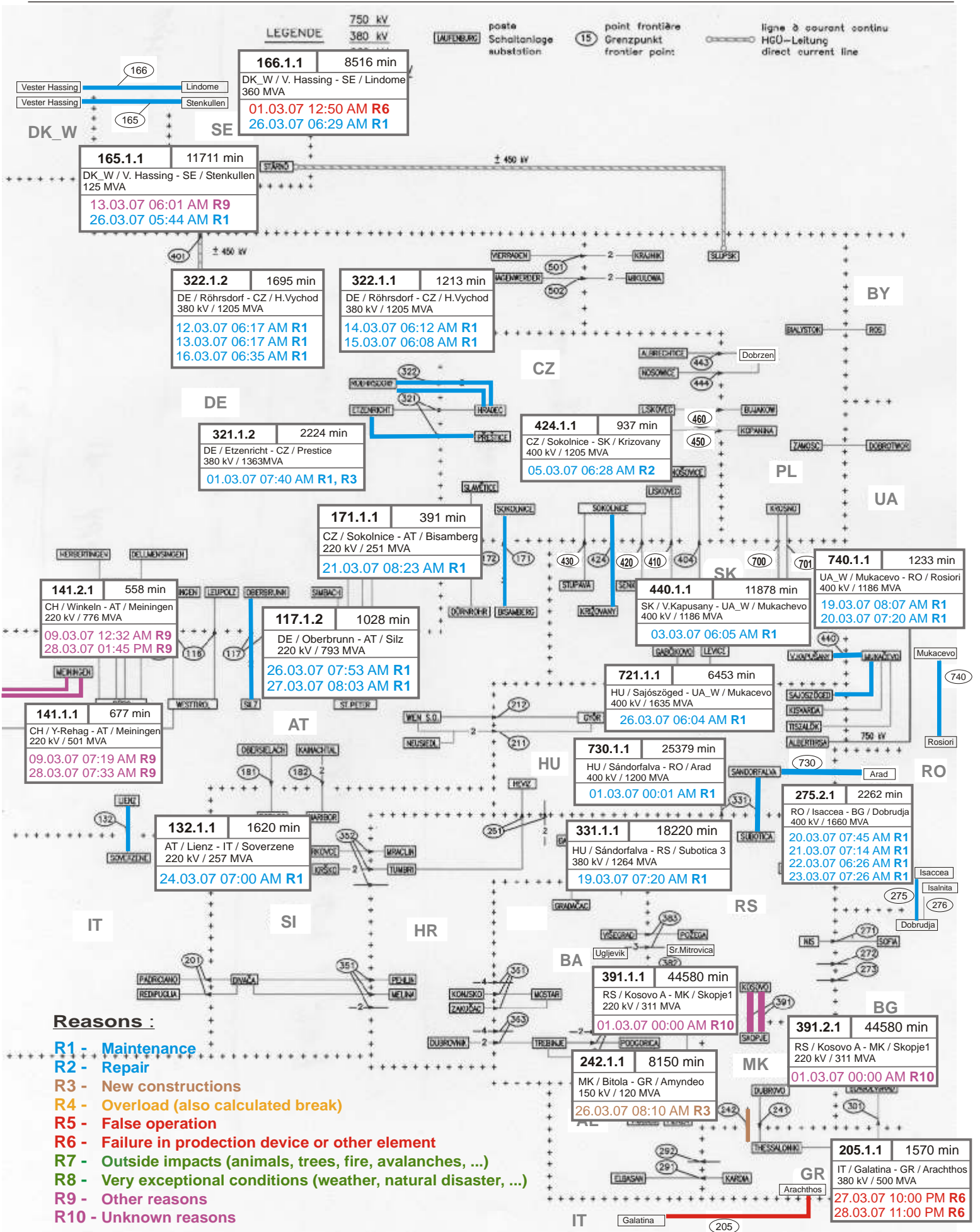
Synchronous operation with UCTE region

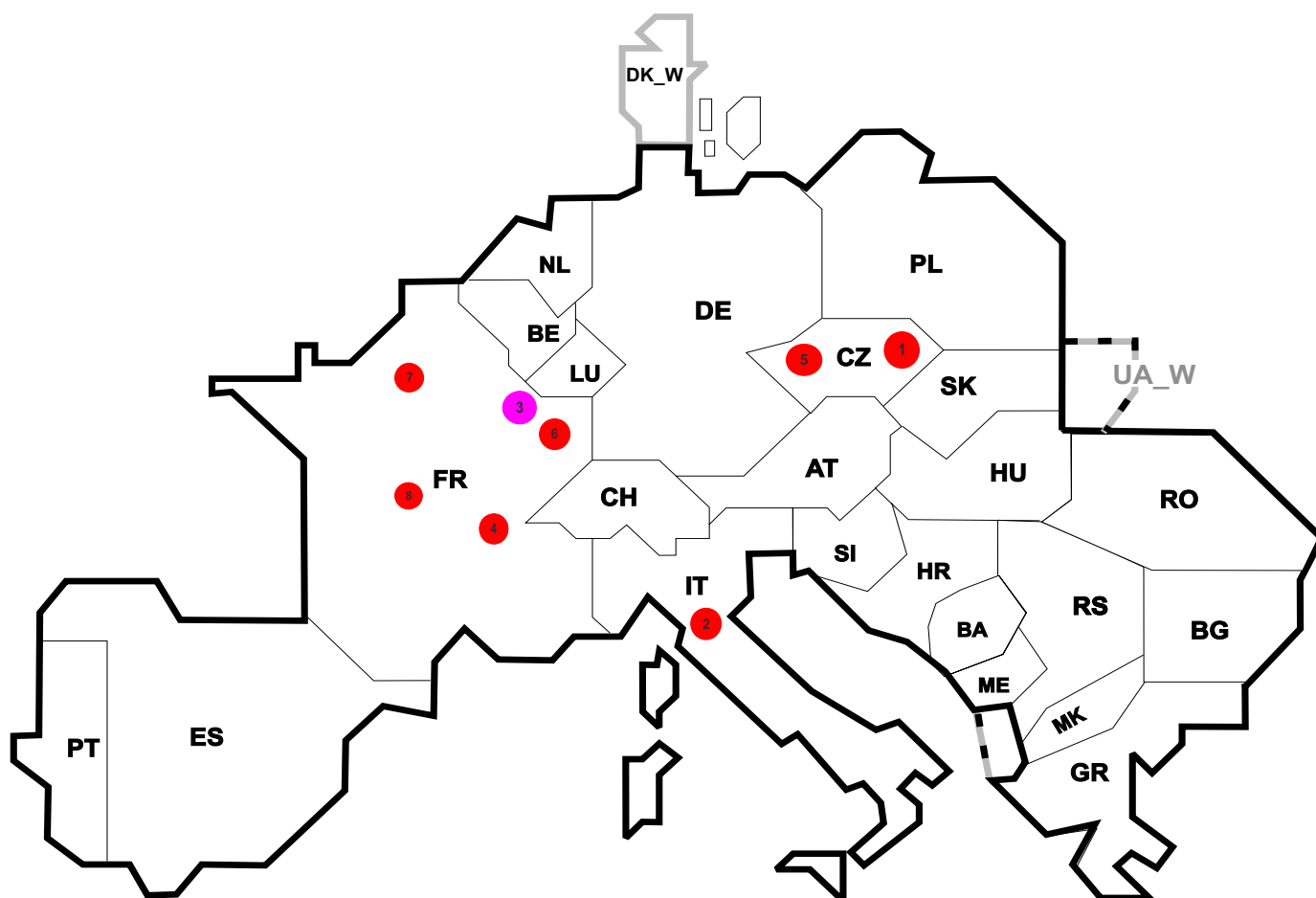
Sum of load flows in MW:

UCTE = 38560 MW
Total = 45200 MW

I = Import balance
E = Export balance







Reasons:

- R4** Overload (also calculated break)
- R5** False operation
- R6** Failure in protection device or other element
- R7** Outside impacts (animals, trees, fire, avalanches, ...)
- R8** Very exceptional conditions (weather, natural disaster, ...)
- R9** Other reasons
- R10** Unknown reasons

No	Country	Substation	Reason	Energy not supplied ² [MWh]	Total loss of power [MW]	Restoration time [min]	Equivalent time of interruption ¹
1	CZ	Krasikov	R6	21	160	8	0,178
2	IT	Marcaria	R6	105	10	636	0,164
3	FR	St.Avoid	R9	123	143	56	0,138
4	FR	Allinges	R6	117	79	90	0,132
5	CZ	Cechy Stred	R5	10	35	17	0,083
6	FR	Halles	R5	10	111	8	0,011
7	FR	Nanterre	R6	6	100	7	0,007
8	FR	Loges	R6	5	15	20	0,006

¹ (year [in min] * energy not supply) / consumption last 12 months

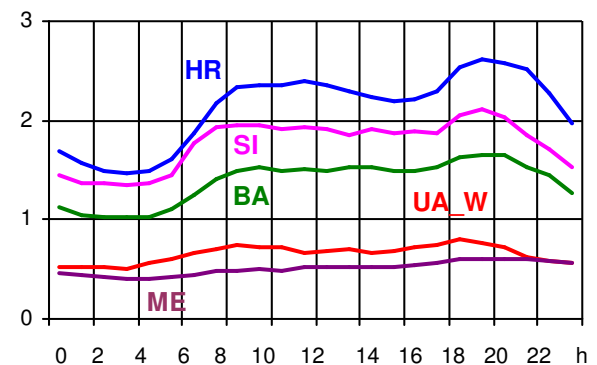
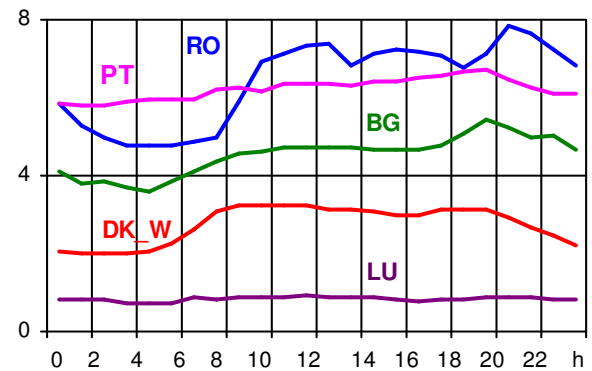
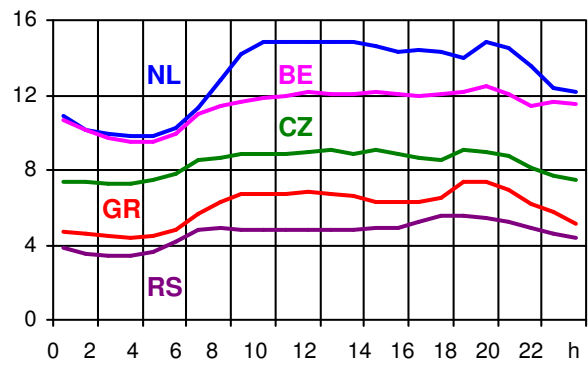
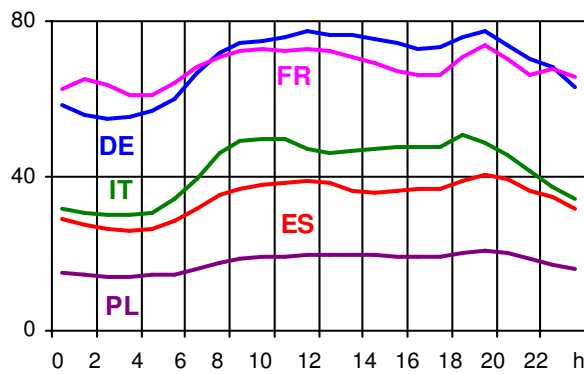
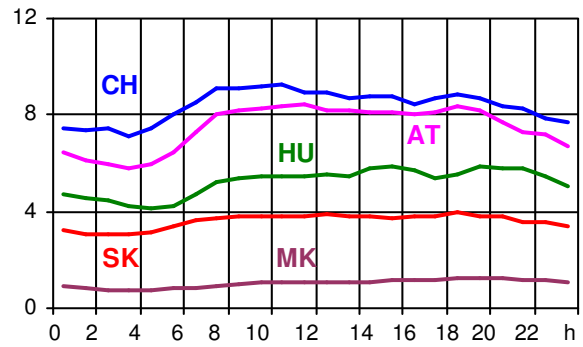
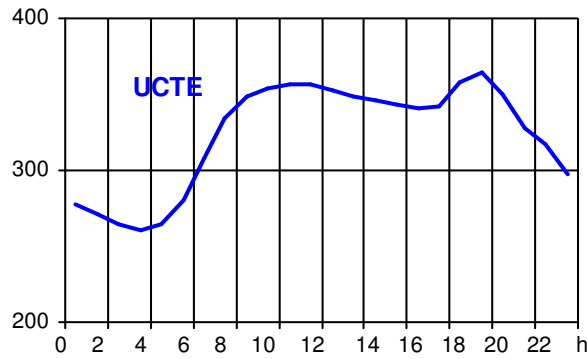
² Energy Not Supplied only related to the transmission grid, not including supply interruptions in lower voltage levels. A report with a detailed description of the events on 4 November 2006 to be found on www.ucte.org.

Control area	Export Programs	Import Programs	Export Programs at 03:00	Import Programs at 03:00	Export Programs at 11:00	Import Programs at 11:00
AT	754238	970456	1580	943	1276	1265
BA	378861	239165	283	150	389	151
BE	518879	1057782	87	697	225	1119
BG	n.a.	n.a.	n.a.	n.a.	n.a.	n.a.
CH	2492931	3289814	2400	4736	3890	4121
CZ	2031928	657920	2903	740	2797	1713
DE	4176949	1424150	7917	1748	7358	1265
ES	n.a.	n.a.	n.a.	n.a.	n.a.	n.a.
FR	7480084	1996843	7780	7229	6892	4815
GR	8644	492952	4	730	5	475
HR	206295	667236	209	805	320	1001
HU	779773	1180862	1248	1672	951	1692
IT	168492	4869059	445	5665	101	7198
ME	253136	359119	172	247	230	377
MK	0	185	146	338	145	397
NL	390446	1844558	1397	1982	255	2386
PL	576499	457426	556	770	1200	630
PT	179014	680567	64	762	0	866
RO	459428	91455	411	196	654	188
RS	553236	593930	496	600	629	733
SI	550858	479314	748	496	783	739
SK	785135	541047	1170	624	1091	918
DK_W	437812	590551	730	926	1113	1300
UA_W	337157	0	425	0	499	0

- Control areas can differ from national borders (i.e. German block which includes parts of AT, LU and DK).
- Values are calculated on an hourly base (MWh).
- This values are not the provisional values entered in the VULCANUS system, but the definitive values after an eventual correction during the actual date.
- Export Programs: Sum of all positive values of every hour of every border
- Import Programs: Sum of all negative values of every hour of every border
- Export Programs at 03:00: Sum of all positive values the third Wednesday from 02:00 to 03:00 a.m.
- Import Programs at 03:00: Sum of all negative values the third Wednesday from 02:00 to 03:00 a.m.
- Export Programs at 11:00: Sum of all positive values the third Wednesday from 10:00 to 11:00 a.m.
- Import Programs at 11:00: Sum of all negative values the third Wednesday from 10:00 to 11:00 a.m.

Consumption hourly load curves on 21.03.2007 CET

Values in GW



	Highest load MW	var.% ¹	Load representativity %
AT	8475	-1,4	100
BA	1649	-4,8	100
BE ²	12464	1,7	100
BG	5442	-6,6	100
CH	9239	-3,1	100
CZ	9098	-3,7	100
DE	77600	0,1	91
ES	40405	14,3	98
FR	73981	-1,2	100
GR	7393	2,2	100
HR	2624	-4,7	100
HU	5893	14,1	100
IT	50359	0,5	100
LU	912	-0,9	100
ME	612	-	100
MK	1258	-6,3	100
NL	14863	-10,2	100
PL	20539	1,0	100
PT	7855	8,2	97
RO	6739	-11,3	100
RS	5570	-	100
SI	2121	4,0	95
SK	3982	-2,4	100
UCTE	364959	1,5	
DK_W	3254	-5,3	100
UA_W	815	-10,8	100

¹ Variation as compared to corresponding month of the previous year

² The reported figures are best estimates based on actual measurements and extrapolations.



Contact

Boulevard Saint-Michel, 15
B-1040 Brussels – Belgium
Tel +32 2 741 69 40 – Fax +32 2 741 69 49

info@ucte.org
www.ucte.org