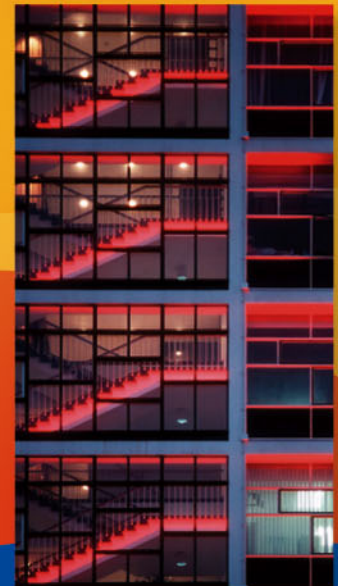
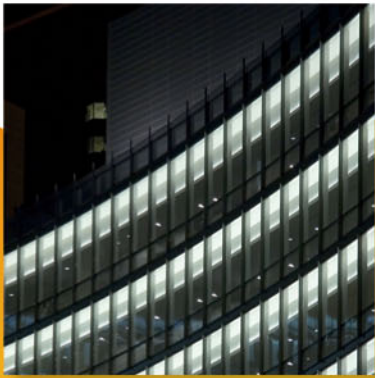


UCTE



March 2006

Monthly provisional values
union for the co-ordination of transmission of electricity

Table of contents		Page
1	Electricity supply situation of the countries	2
2	Physical energy flows	3
3	Monthly consumption	4
4	Monthly consumption variation	6
5	Consumption of the last 12 months	8
6	Variation of the last 12 months' consumption	10
7	Load flows (night)	12
8	Load flows (day)	13
9	Unavailability of international tie lines (major events)	14
10	Network reliability (major events)	16
11	Scheduled exchanges	17
12	Load on the 3 rd Wednesday	18

General remarks and abbreviations used in the tables

- All values of production and consumption in chapter 1, 3&4, 5&6 and 12 are calculated to represent 100% of the national values.
- DK_W Denmark West represents the Western part of Denmark synchronously interconnected with UCTE (Jutland and Funen).
- UA_W Ukraine West represents the so-called Burshtyn Island synchronously interconnected with UCTE.
- CET Central European Time

Countries	Net production in GWh							Exchange balance in GWh	Pump in GWh	Consumption in GWh			
	Therm. nuclear	Therm conv.	Hydro prod	Other renew.	Of which wind	Not identify	Total			monthly	var. [%]	last 12 months	var. [%]
AT	0	2819	2459	0	0	0	5278 ¹	650	224	5704	9,3	65434	1,1
BA	0	585	670	0	0	0	1255	-269	0	986	-0,2	11263	4,5
BE ²	3608	3210	153	203	28	0	7174 ¹	1145	140	8179	5,6	87885	0,0
BG	1937	1838	515	0	0	0	4290	-806	37	3447	0,8	36637	4,4
CH	2417	212	2140	89	1	0	4858 ¹	1228	136	5950	6,0	63600	4,4
CS	0	2609	1533	0	0	0	4142 ¹	128	86	4184	3,0	41909	1,2
CZ	2383	4570	270	10	3	0	7233 ¹	-974	79	6180	4,5	63685	3,4
DE	14559	34700	1955	3596	2701	0	54810 ¹	-3494	698	50618	2,3	558799	0,9
ES	5081	11852	3278	3160	2732	0	23371 ¹	-806	400	22165	1,1	251494	-0,9
FR	35327	7682	6318	428	131	0	49755	-2553	698	46504	2,6	487035	1,4
GR	0	3125	936	106	98	0	4167 ¹	224	18	4373	2,4	53372	3,6
HR	0	393	695	1	1	0	1089 ¹	490	13	1566	4,6	16717	4,1
HU ³	936	2002	0	0	0	0	2938 ¹	630	0	3568	4,9	39770	3,9
IT	0	22754	3196	795	357	0	26745 ¹	3154	736	29163	4,7	332193	2,1
LU	0	293	73	12	7	0	378	302	93	587	8,9	6413	2,4
MK	0	462	174	0	0	0	636 ¹	166	0	802	6,1	8259	9,3
NL	336	7964	0	647	250	0	8947 ¹	1511	0	10458	3,5	115461	3,6
PL	0	13455	286	25	18	0	13766 ¹	-1164	194	12408	5,4	132826	2,3
PT	0	2274	1354	434	272	0	4062 ¹	505	57	4510	4,6	50447	4,2
RO	487	3175	1597	0	0	0	5259 ¹	-467	6	4786	-1,2	51850	1,0
SI	479	389	271	0	0	0	1139	36	0	1175	2,9	12956	-1,9
SK	1595	488	422	1	0	242	2748 ¹	-241	28	2479	2,5	26499	1,3
UCTE	69145	126851	28295	9507	6599	242	234040¹	-605	3643	229792	3,2	2514504	1,6
DK_W	0	2257	2	532	390	0	2791 ¹	-785	0	2006	6,8	21566	2,4
UA_W	0	783	9	0	0	0	792 ¹	-352	0	440	0,9	4339	-2,0

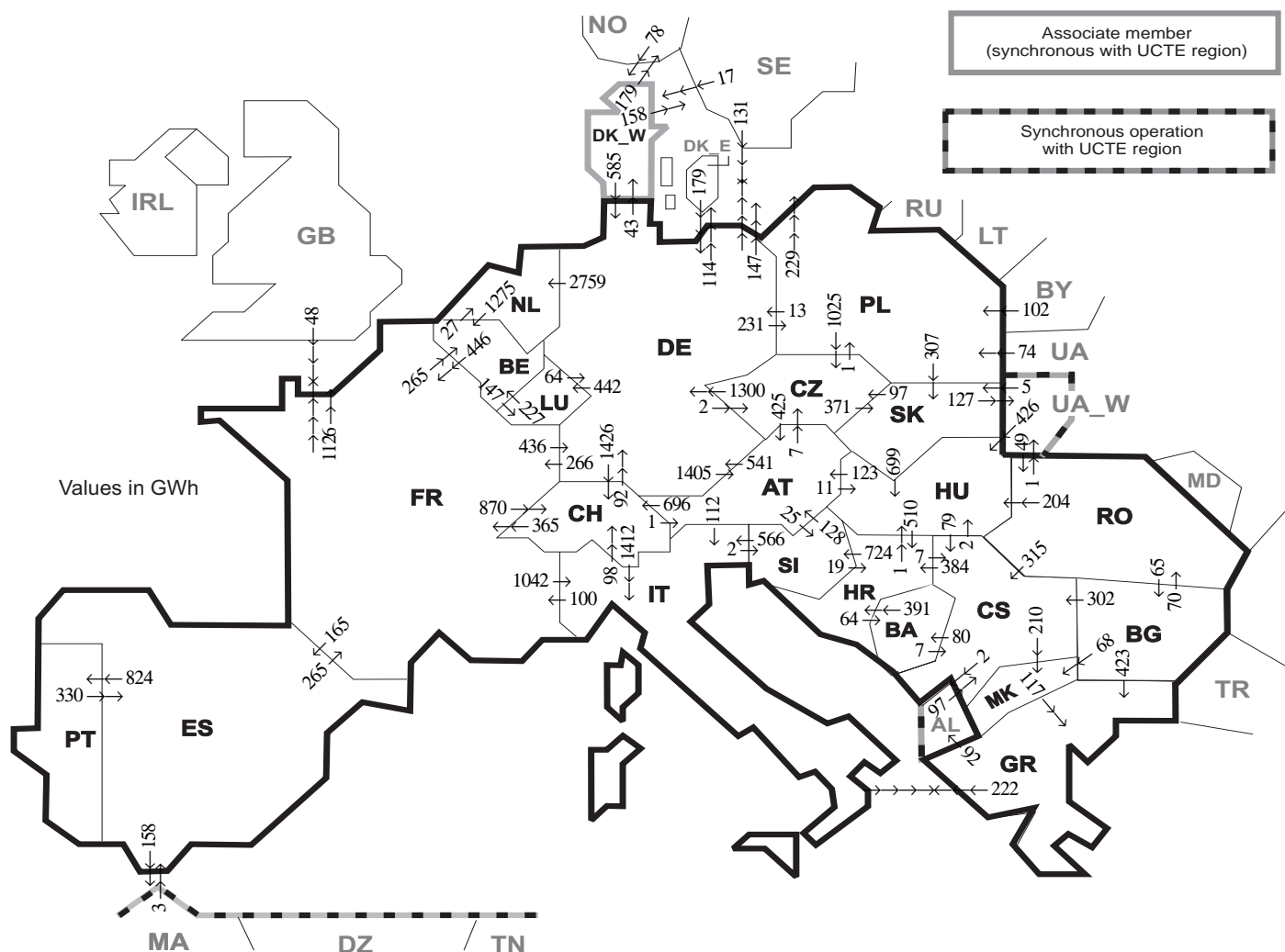
¹ Including deliveries from industry

² The reported figures are best estimates based on actual measurements and extrapolations

³ Data on hydro, other renewable, not clearly identifiable production are not yet available

All representativities of the national production and consumption values used to calculate values at a representativity of 100% as stated in the table above

Countries	AT	BA	BE	BG	CH	CS	CZ	DE	ES	FR	GR	HR	HU	IT	LU	MK	NL	PL	PT	RO	SI	SK	DK_W	UA_W
Production																								
Therm.nuclear	100	100	100	100	100	100	100	100	100	100	100	100	100	100	100	100	100	100	100	100	100	100	100	100
Thermal conv.	100	100	100	100	100	100	100	100	97	100	100	100	100	100	100	100	100	100	92	100	100	100	100	100
Hydro prod	100	100	100	100	100	100	100	100	100	100	100	100	100	100	100	100	100	100	100	100	100	100	100	100
Other renew.	100	100	100	100	100	100	100	100	95	100	100	100	100	100	100	100	100	100	100	100	100	100	100	100
Not identify	100	100	100	100	100	100	100	100	100	100	100	100	100	100	100	100	100	100	100	100	100	100	100	100
Consumption	100	100	100	100	100	100	100	100	98	100	100	100	100	100	100	100	100	100	96	100	95	100	100	100



Exporting countries	Importing countries																				Sum export						
	AT	BA	BE	BG	CH	CS	CZ	DE	ES	FR	GR	HR	HU	IT	LU	MK	NL	PL	PT	RO		SI	SK	DK_W	UA_W	Other III ¹	
AT	-	-	-	-	696	-	7	541	-	-	-	-	11	112	-	-	-	-	-	-	25	-	-	-	-	-	1392
BA	-	-	-	-	-	7	-	-	-	-	-	391	-	-	-	-	-	-	-	-	-	-	-	-	-	-	398
BE	-	-	-	-	-	-	-	-	-	446	-	-	-	-	147	-	27	-	-	-	-	-	-	-	-	-	620
BG	-	-	-	-	-	302	-	-	-	-	423	-	-	-	68	-	-	-	-	70	-	-	-	-	-	0	863
CH	1	-	-	-	-	-	92	-	365	-	-	-	1412	-	-	-	-	-	-	-	-	-	-	-	-	1870	
CS	-	80	-	0	-	-	-	-	-	-	-	384	2	-	210	-	-	-	-	0	-	-	-	-	-	2	678
CZ	425	-	-	-	-	-	-	1300	-	-	-	-	-	-	-	-	-	1	-	-	-	371	-	-	-	2097	
DE	1405	-	-	-	1426	-	2	-	266	-	-	-	-	442	-	2759	231	-	-	-	-	-	43	-	261	6835	
ES	-	-	265	-	870	-	-	-	265	-	-	-	-	-	-	-	-	-	824	-	-	-	-	-	158	1247	
FR	-	-	-	0	-	-	-	-	-	265	-	-	-	1042	-	-	-	-	-	-	-	-	-	-	-	1126	3904
GR	-	-	265	-	870	-	-	436	165	-	-	-	-	1042	-	-	-	-	-	-	-	-	-	-	-	92	314
HR	-	64	-	-	-	7	-	-	-	-	-	-	1	-	-	-	-	-	-	-	724	-	-	-	-	796	
HU	123	-	-	-	-	79	-	-	-	-	-	510	-	-	-	-	-	-	-	0	0	0	0	-	-	712	
IT	0	-	-	98	-	-	-	-	-	100	0	-	-	-	-	-	-	-	-	-	2	-	-	-	-	200	
LU	-	-	227	-	-	-	64	-	-	-	-	-	-	-	-	-	-	-	-	-	-	-	-	-	-	291	
MK	-	-	-	0	-	0	-	-	-	-	117	-	-	-	-	-	-	-	-	-	-	-	-	-	-	117	
NL	-	-	1275	-	-	-	0	-	-	-	-	-	-	-	-	-	-	-	-	-	-	-	-	-	-	1275	
PL	-	-	-	-	-	-	1025	13	-	-	-	-	-	-	-	-	-	-	-	-	-	307	-	-	229	1574	
PT	-	-	-	-	-	-	-	-	330	-	-	-	-	-	-	-	-	-	-	-	-	-	-	-	-	330	
RO	-	-	-	65	-	315	-	-	-	-	-	-	204	-	-	-	-	-	-	-	-	-	-	1	0	585	
SI	128	-	-	-	-	-	-	-	-	-	-	19	566	-	-	-	-	-	-	-	-	-	-	-	-	713	
SK	-	-	-	-	-	97	-	-	-	-	-	699	-	-	-	-	-	0	-	-	-	-	-	127	-	923	
DK_W	-	-	-	-	-	-	585	-	-	-	-	-	-	-	-	-	-	-	-	-	-	-	-	-	337	922	
UA_W	-	-	-	-	-	-	-	310	3	48	0	-	426	-	-	-	-	-	-	49	5	-	-	-	-	480	
Other III ¹	-	-	-	0	97	-	310	3	48	0	-	-	-	-	-	-	176	-	-	0	-	95	-	-	-	729	
Sum imp	2082	144	1767	65	3090	807	1131	3341	498	1490	540	1304	1343	3354	589	278	2786	408	824	119	751	683	138	128	2205	29865	

Sum of physical energy flows between UCTE countries = 25695GWh Total physical energy flows = 29865GWh

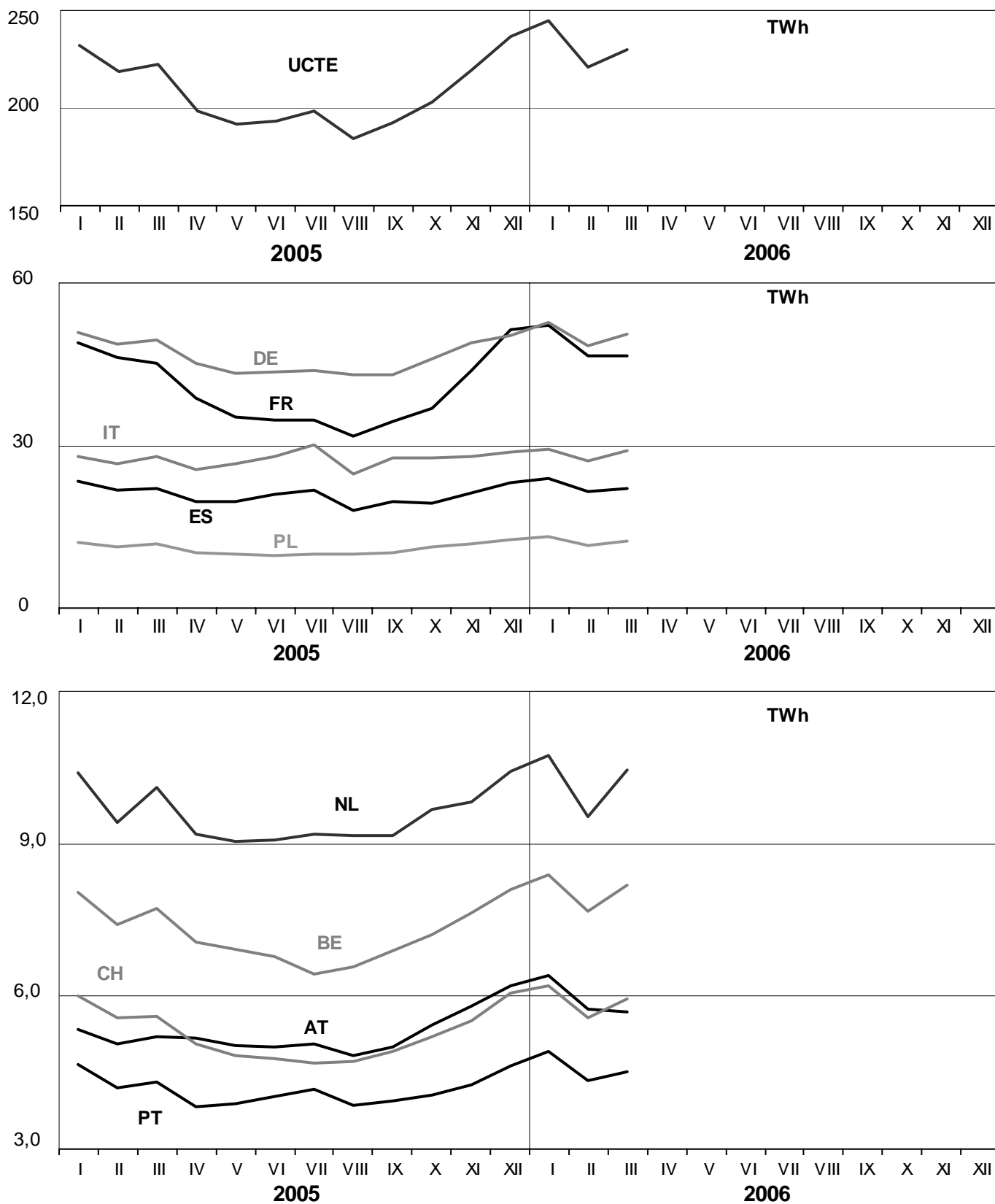
¹ Other III: Albania, Belarus, Denmark East, Great Britain, Morocco, Republic of Moldavia, Norway, Sweden, Republic of Turkey and Ukraina

These physical energy flows were measured on the cross-frontier transmission lines (≤ 110 kV) listed in table 9 of the Statistical Yearbook. These values may differ from the official statistics and the exchange balances in chapter 1.

3

Monthly consumption

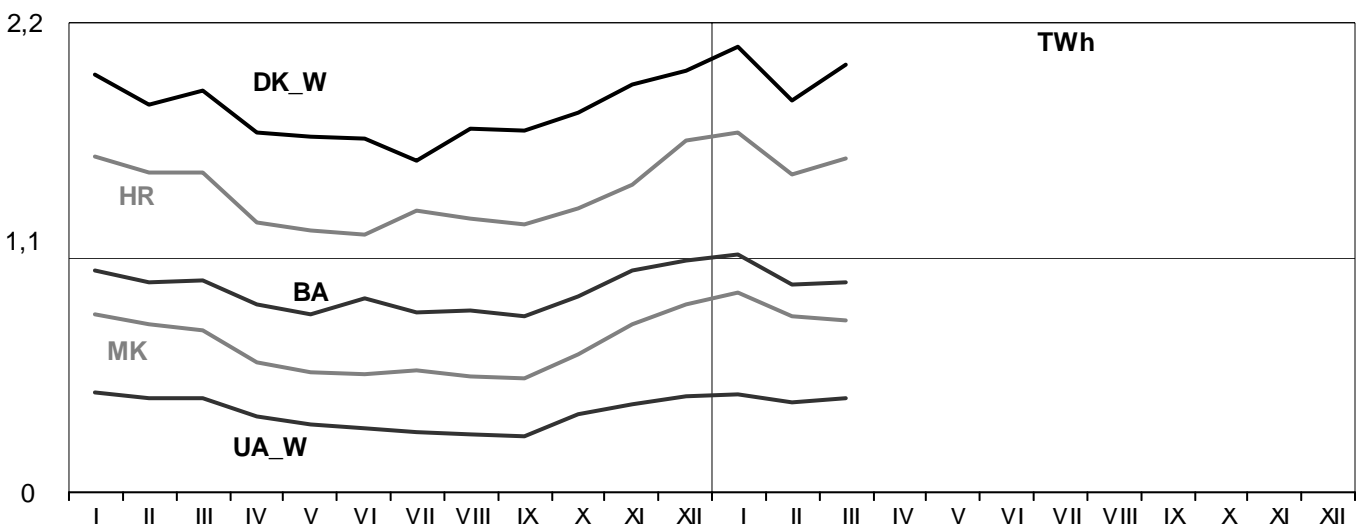
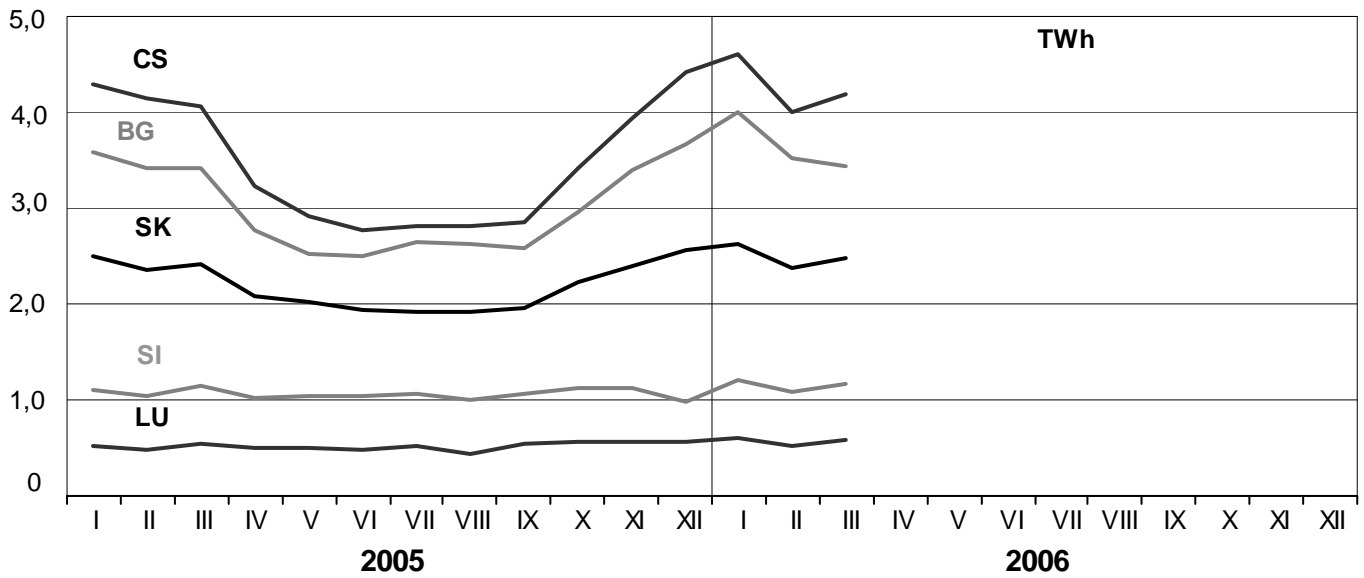
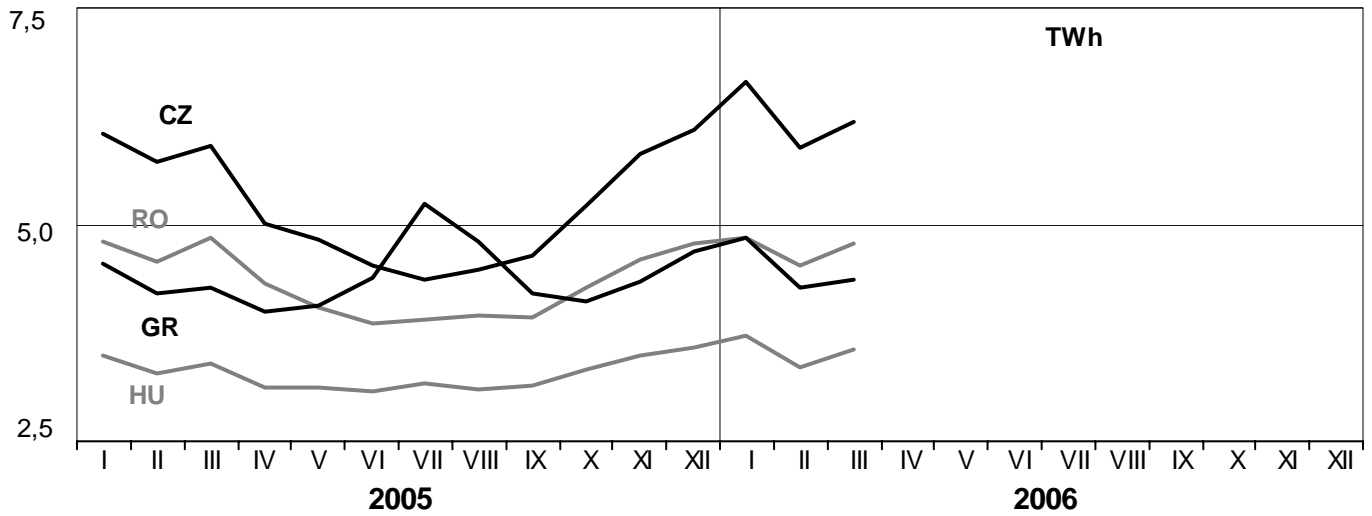
March 2006



3

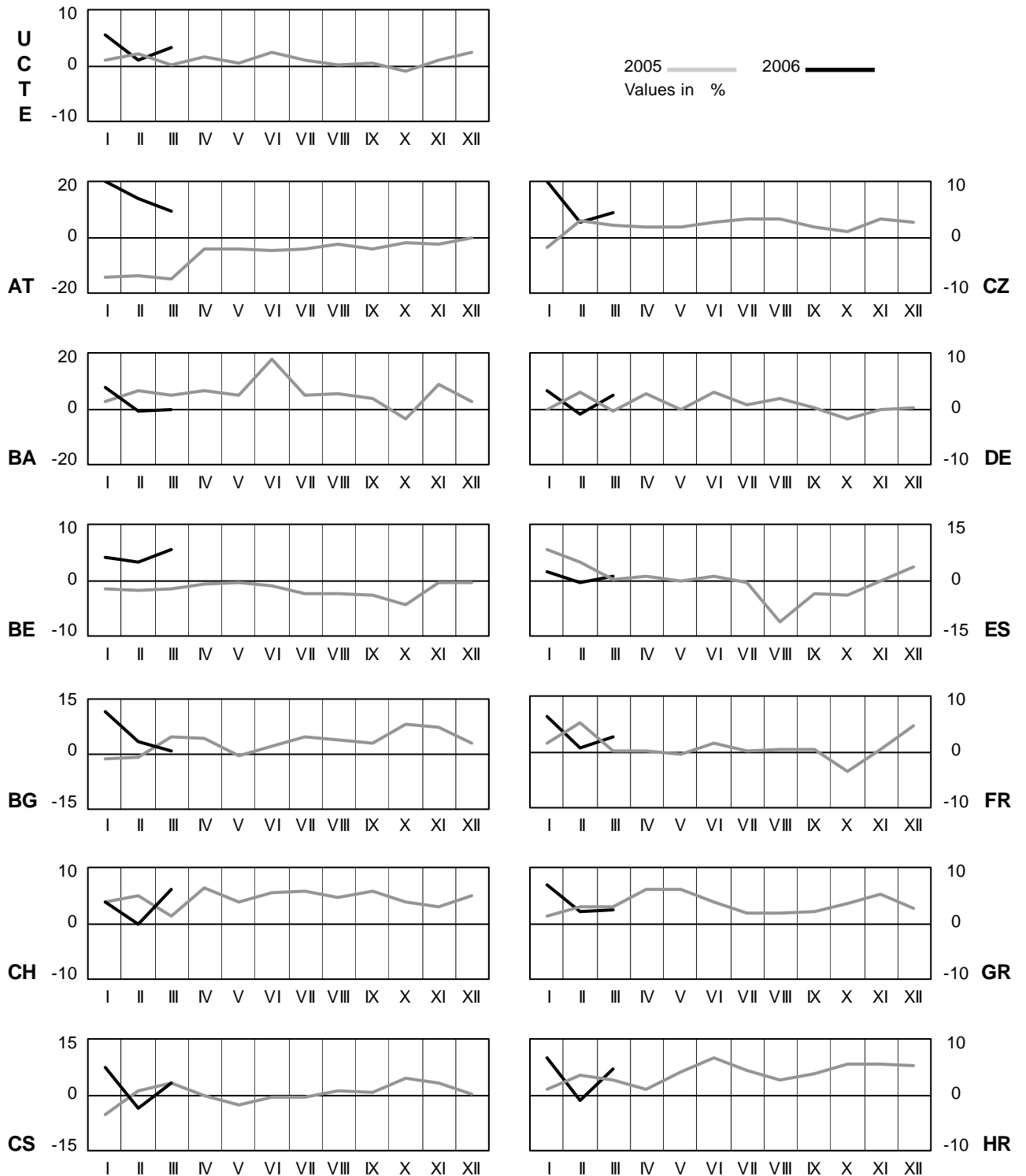
Monthly consumption

March 2006



4 Monthly consumption variation

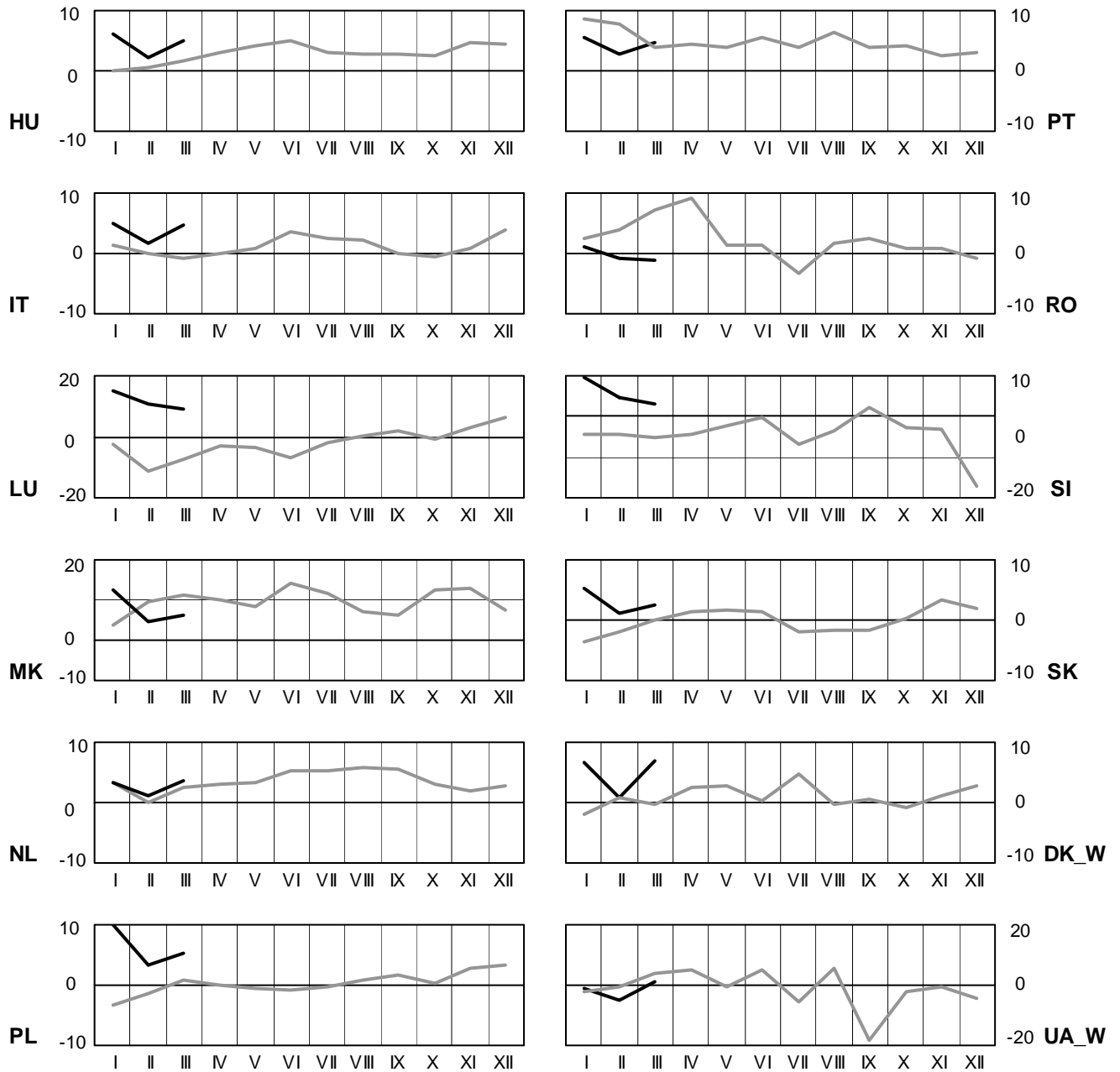
March 2006



4 Monthly consumption variation

March 2006

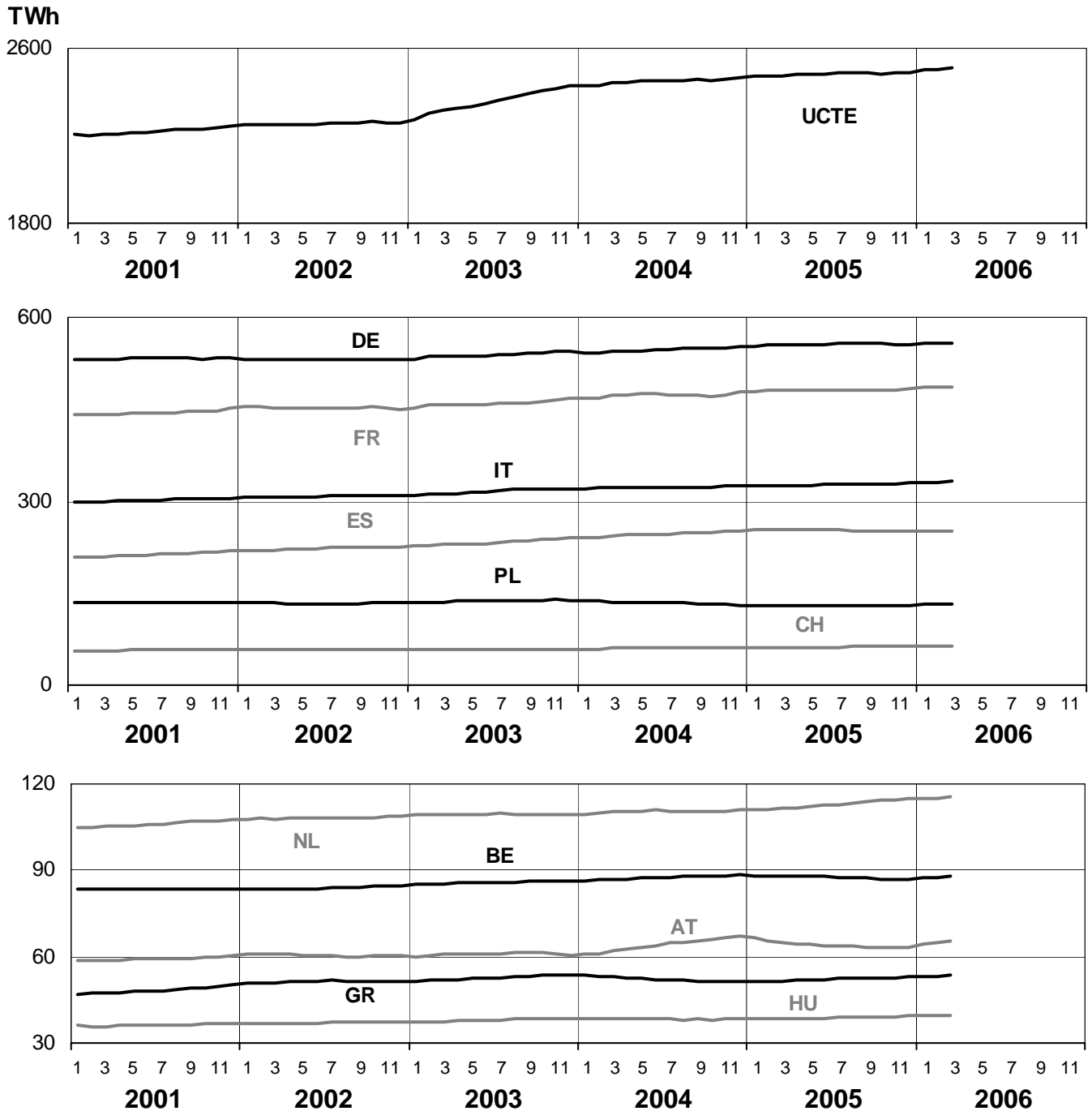
2005 — 2006 —
Values in %



5

Consumption of the last 12 months

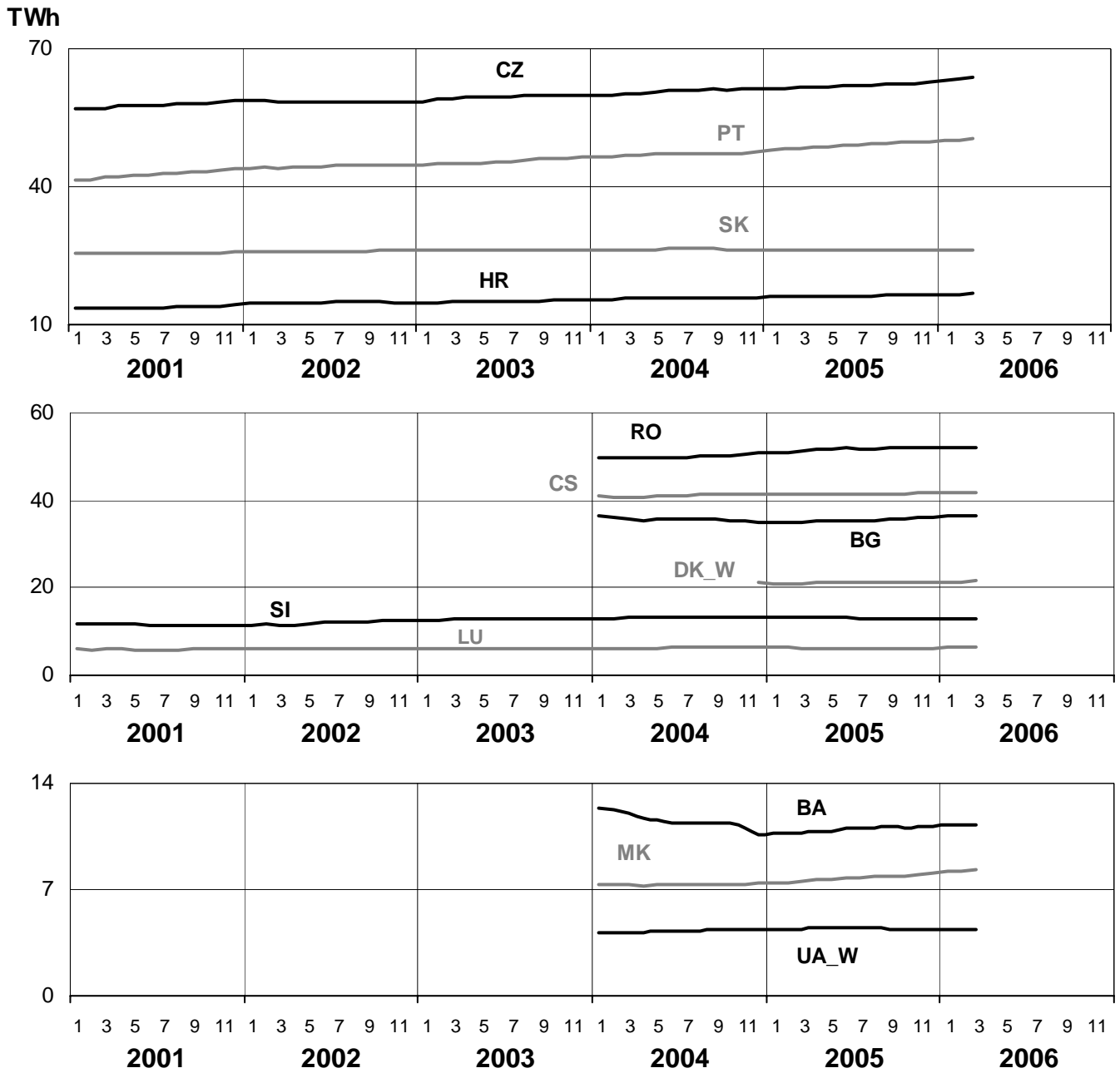
March 2006



5

Consumption of the last 12 months

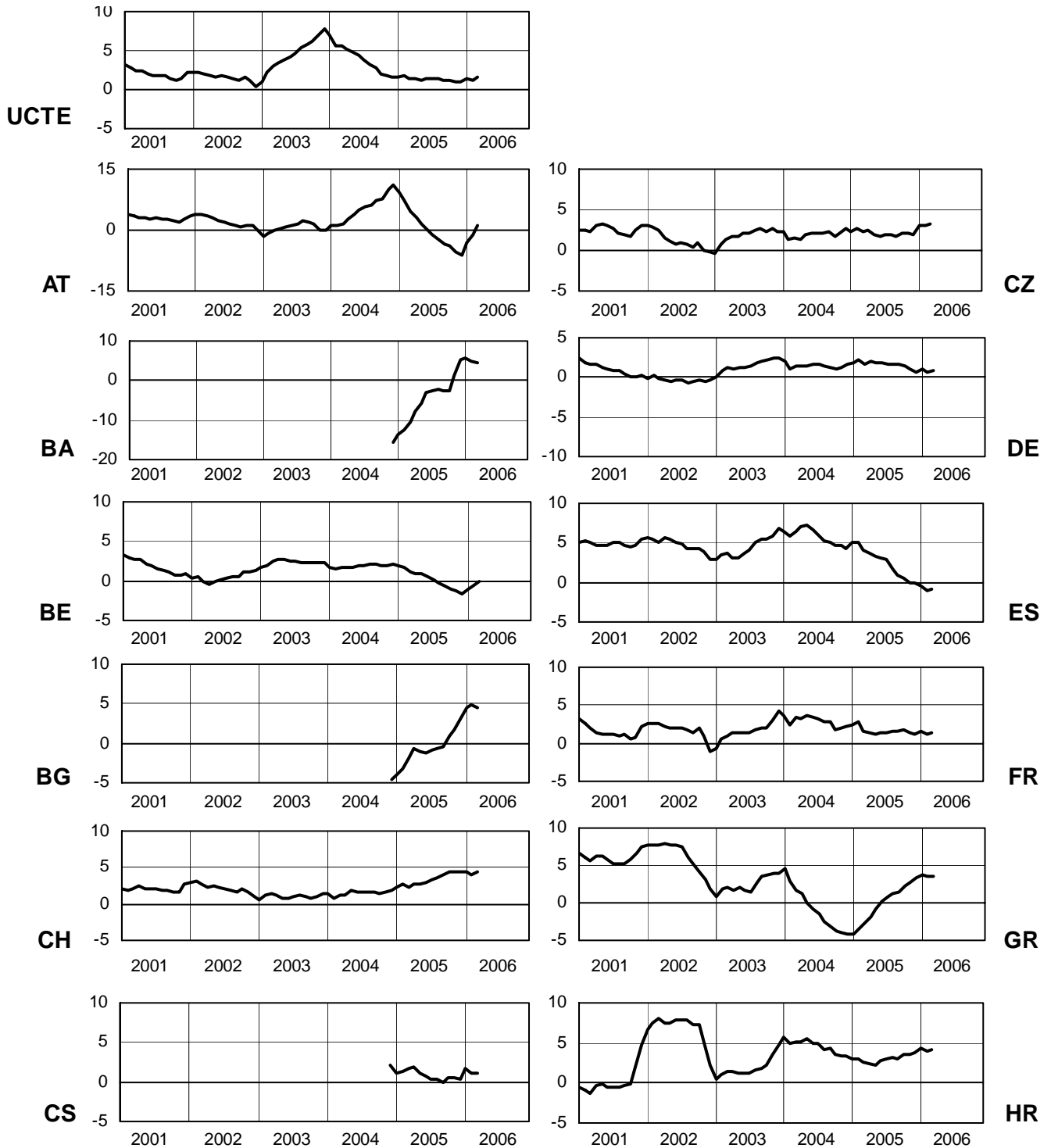
March 2006



6

Variation of the last 12 months' consumption in %

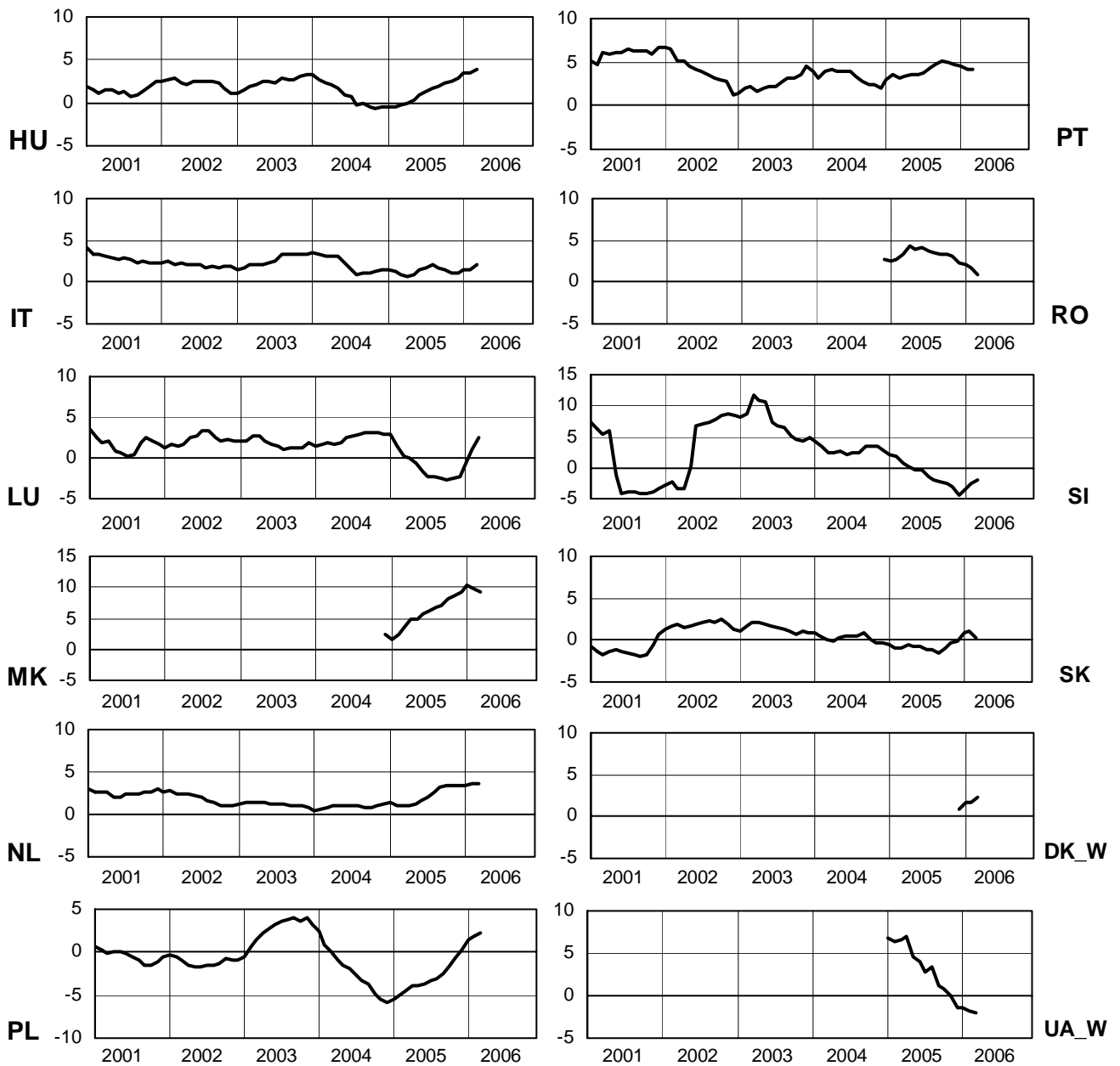
March 2006

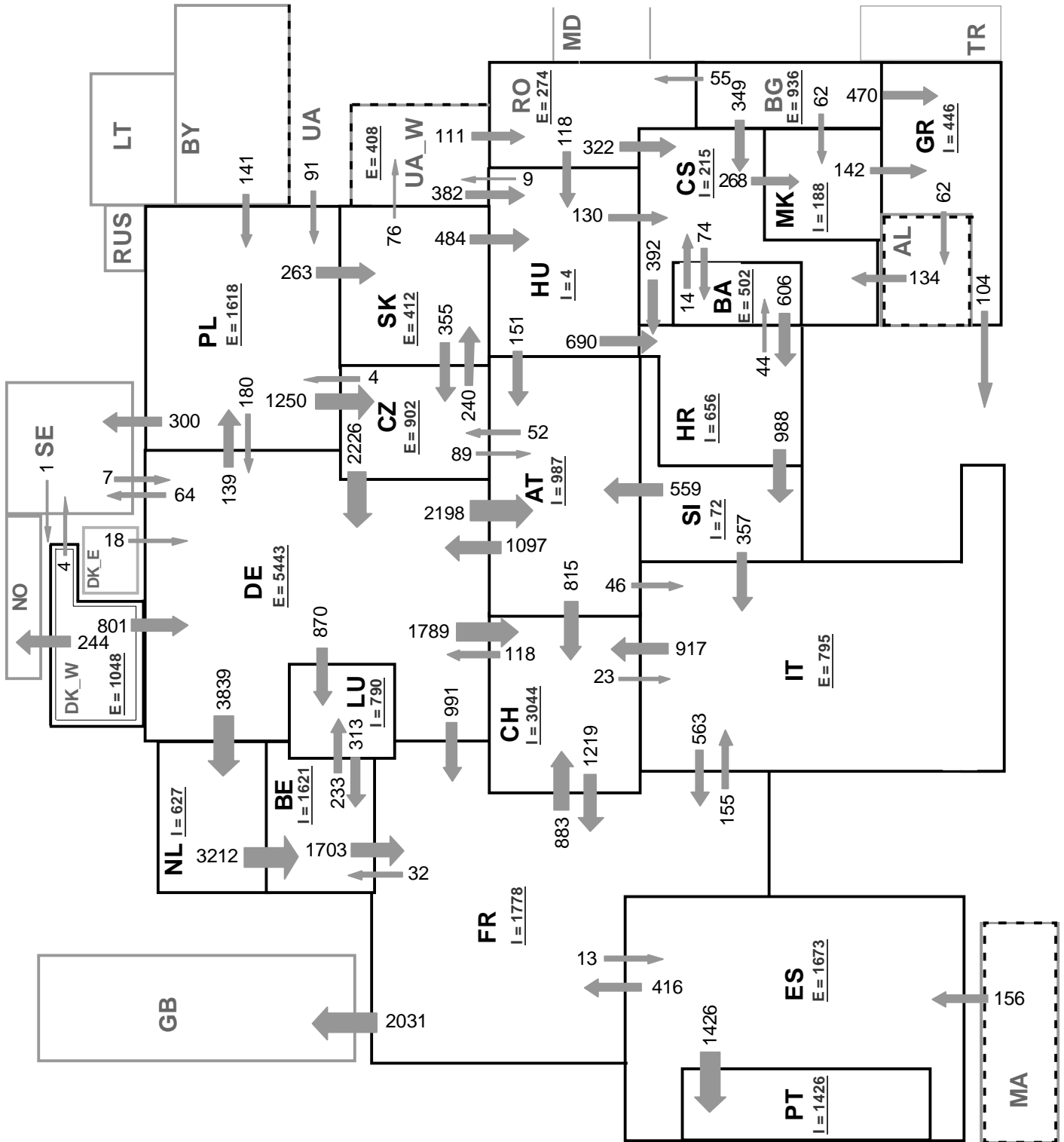


6

Variation of the last 12 months' consumption in %

March 2006





Associate member

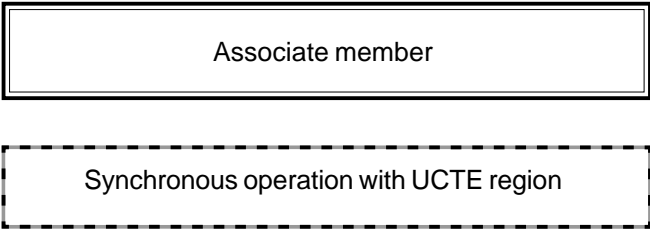
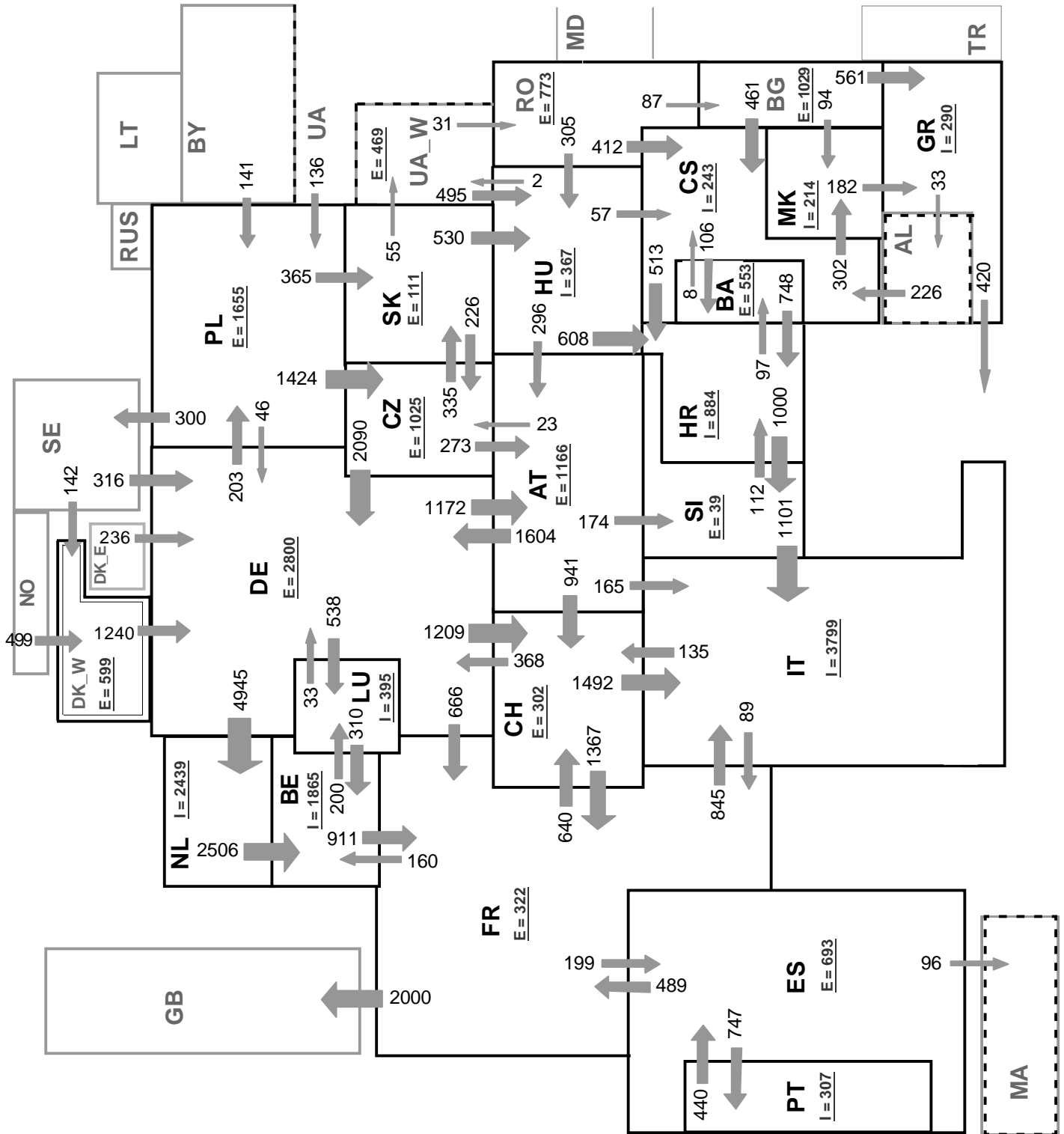
Synchronous operation with UCTE region

Sum of load flows in MW:

UCTE = 34048 MW

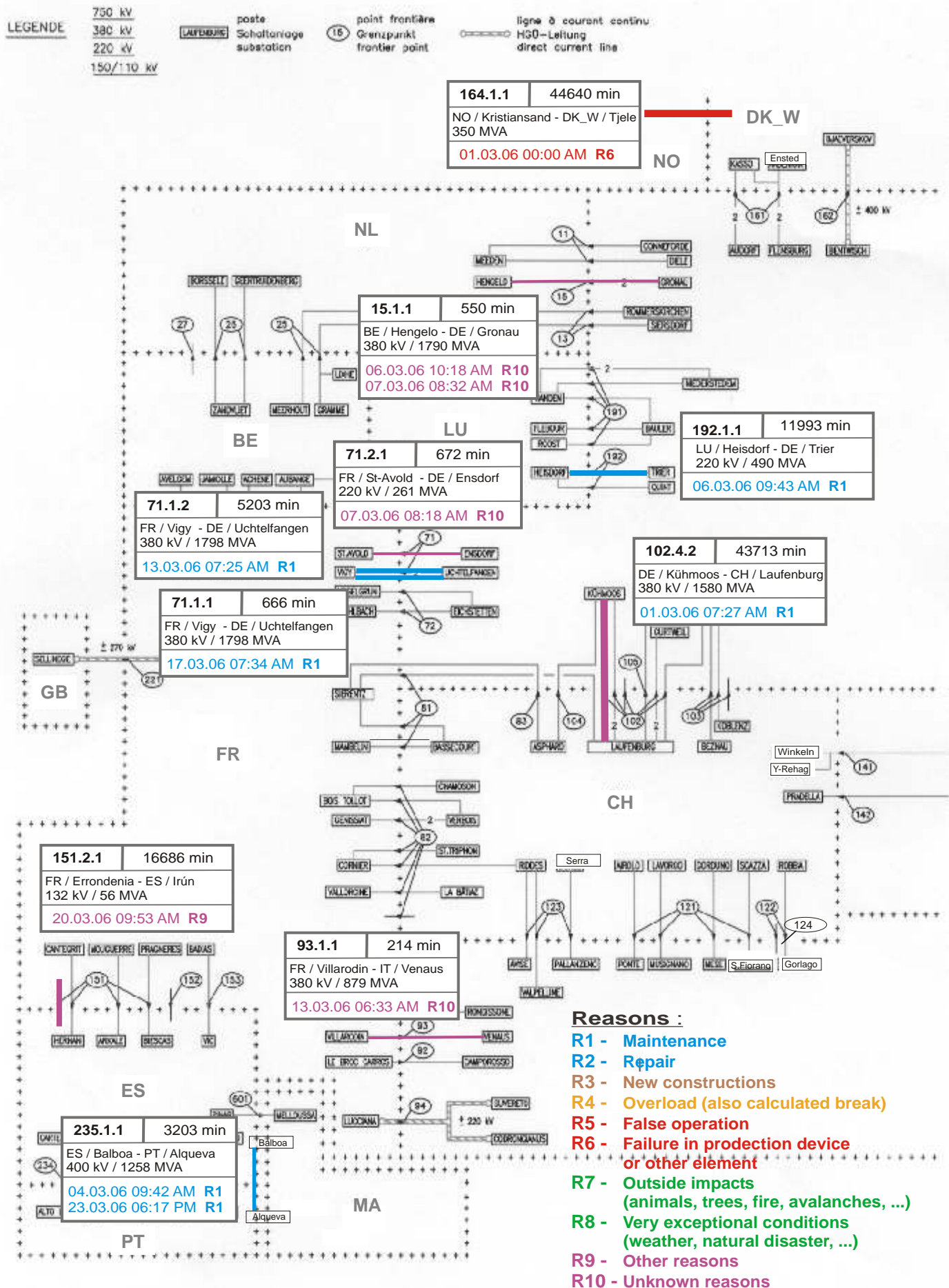
Total = 38680 MW

I = Import balance
E = Export balance



Sum of load flows in MW:
UCTE = 35330 MW
Total = 41278 MW

I = Import balance
E = Export balance



DK_W

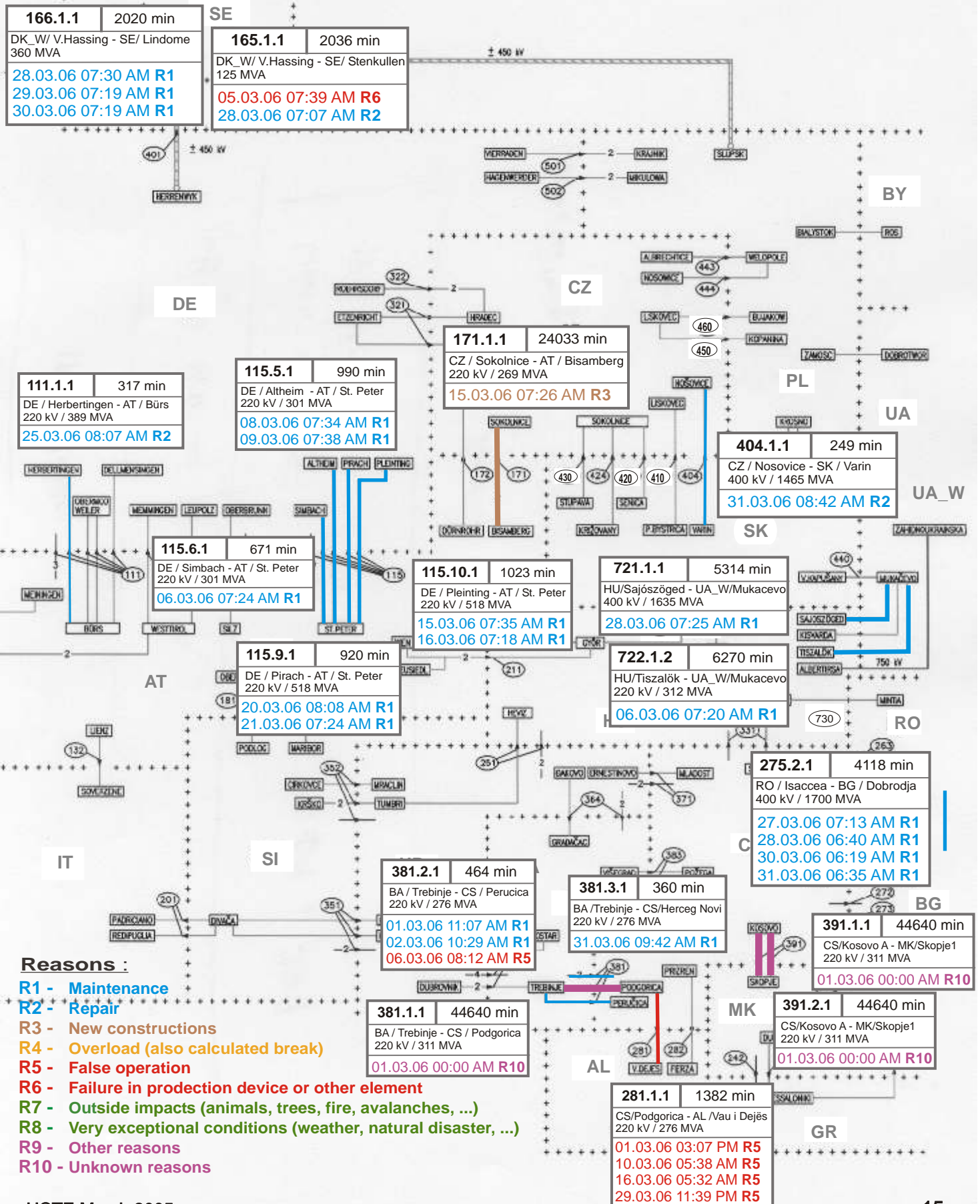
LEGENDE

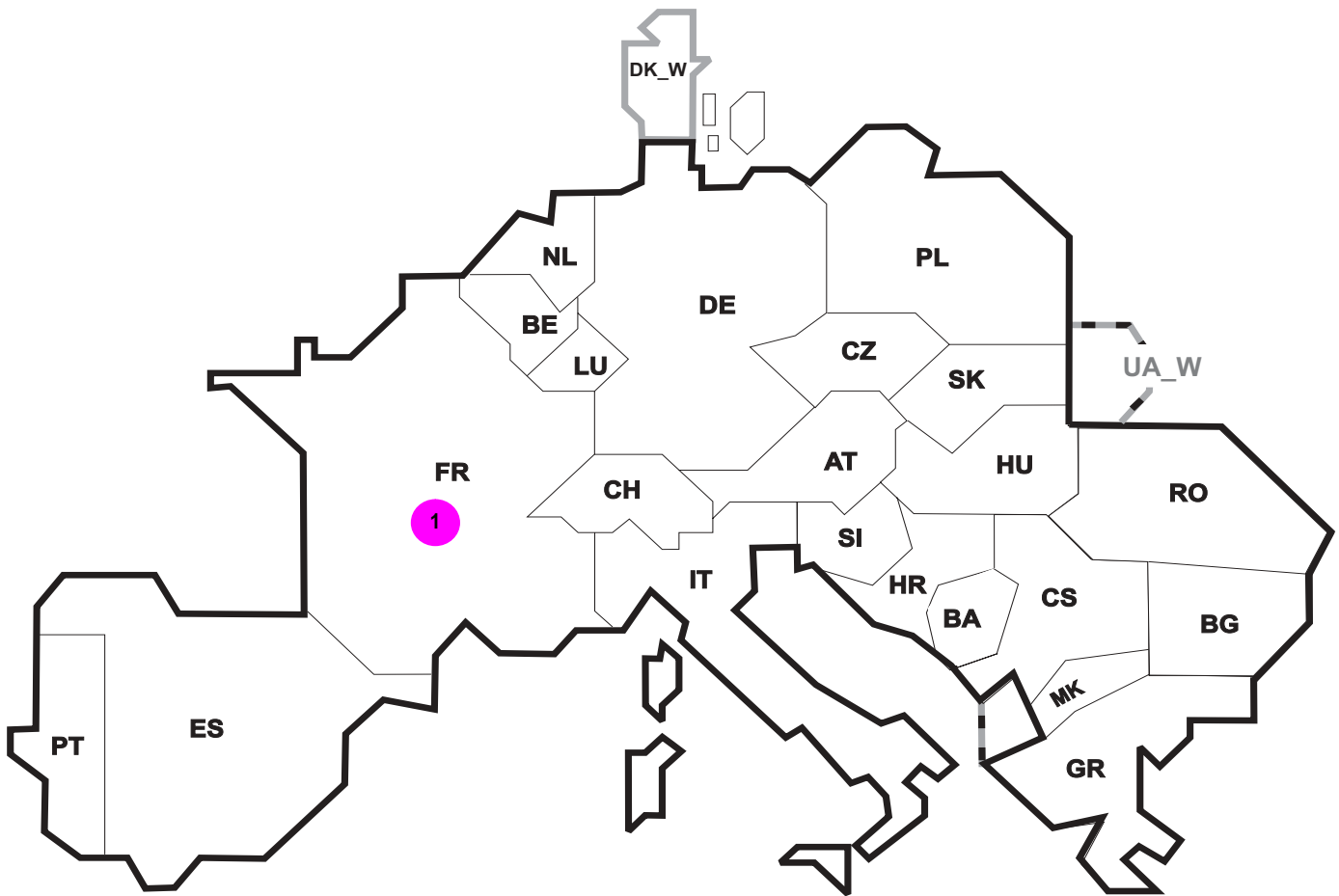
750 kV
380 kV
220 kV
150/110 kV

LAUFENBURG poste Schalteranlage substation

15 point frontière Grenzpunkt frontier point

ligne à courant continu HGÜ-Leitung direct current line





Reasons:

- R4** Overload (also calculated break)
- R5** False operation
- R6** Failure in protection device or other element
- R7** Outside impacts (animals, trees, fire, avalanches, ...)
- R8** Very exceptional conditions (weather, natural disaster, ...)
- R9** Other reasons
- R10** Unknown reasons

No	Country	Substation	Reason	Energy not supplied [MWh]	Total loss of power [MW]	Restoration time [min]	Equivalent time of interruption ¹
1	FR	Boisse	R6	34	66	31	0,04

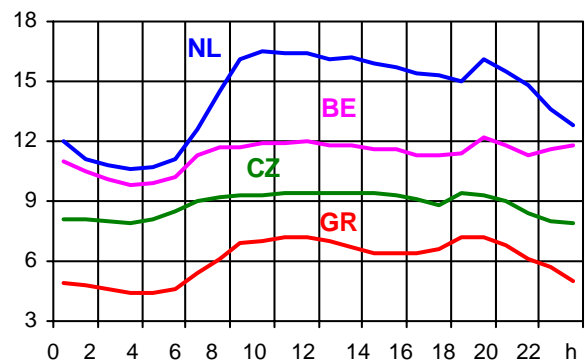
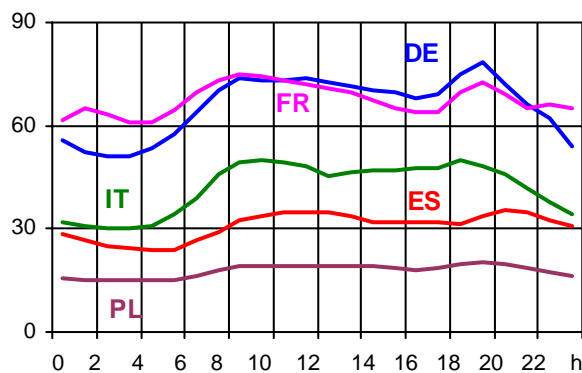
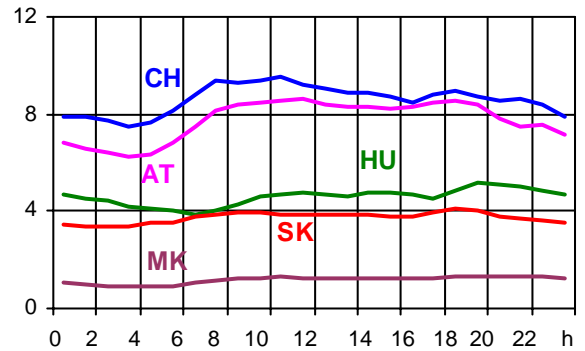
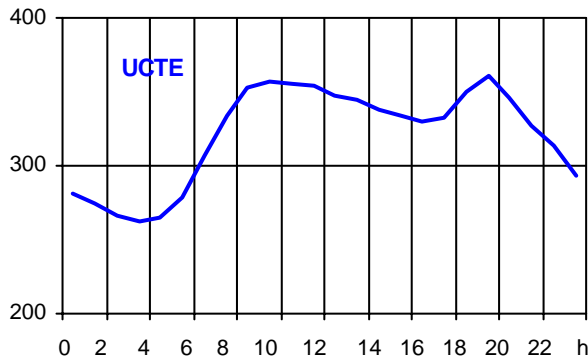
¹ (year [in min] * energy not supply) / consumption last 12 months

Control area	Export Programs	Import Programs	Export Programs at 03:00	Import Programs at 03:00	Export Programs at 11:00	Import Programs at 11:00
AT	538299	1037560	1878	701	2049	708
BA	352274	93528	601	100	585	100
BE	243665	1310076	0	1527	0	1768
BG	n.a.	n.a.	n.a.	n.a.	n.a.	n.a.
CH	n.a.	n.a.	n.a.	n.a.	n.a.	n.a.
CS	595778	729447	509	746	891	1160
CZ	1865863	829369	2481	1499	2578	1472
DE	5013902	1884114	6954	2708	7743	4136
ES	1206639	400609	1880	180	1626	811
FR	7115167	4659565	7519	9144	8586	8188
GR	222404	450051	140	625	438	736
HR	313673	823946	428	1100	428	1310
HU	510121	1140212	935	940	948	1308
IT	200299	3353609	1480	685	224	4023
MK	3200	166000	111	272	84	291
NL	528690	2031805	1641	2252	838	3273
PL	1214569	82777	1640	125	1708	140
PT	144658	650328	0	1449	511	866
RO	621219	155121	383	198	987	206
SI	630325	666364	860	932	889	798
SK	628541	316313	792	300	650	426
DK_W	526589	104924	1049	0	1200	664
UA_W	346388	0	411	0	466	0

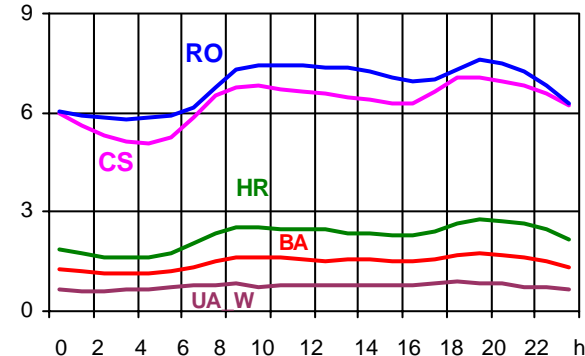
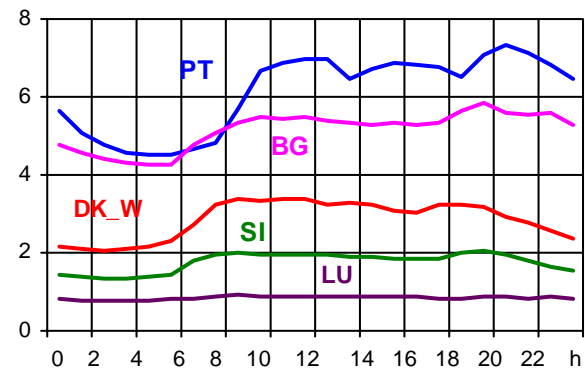
- Control areas can differ from national borders (i.e. German block which includes parts of AT, LU and DK).
- Values are calculated on an hourly base (MWh).
- This values are not the provisional values entered in the VULCANUS system, but the definitive values after an eventual correction during the actual date.
- Export Programs: Sum of all positive values of every hour of every border
- Import Programs: Sum of all negative values of every hour of every border
- Export Programs at 03:00: Sum of all positive values the third Wednesday from 02:00 to 03:00 a.m.
- Import Programs at 03:00: Sum of all negative values the third Wednesday from 02:00 to 03:00 a.m.
- Export Programs at 11:00: Sum of all positive values the third Wednesday from 10:00 to 11:00 a.m.
- Import Programs at 11:00: Sum of all negative values the third Wednesday from 10:00 to 11:00 a.m.

Consumption hourly load curves on 15.03.2006

Values in GWh



	Peak load		Load representativity %	Parallel power ² MW
	MW	var.% ¹		
AT	8595	-12,4	100	9810
BA	1733	8,3	100	2161
BE	12190	6,0	100	10085
BG	5829	11,8	100	5481
CH	9530	5,0	100	10124
CS	7047	12,3	100	6442
CZ	9448	7,2	100	11456
DE	78352	0,0	91	73300
ES	35665	1,3	98	36934
FR	74891	15,7	100	73649
GR	7231	3,8	100	6914
HR	2753	13,1	100	1858
HU	5163	-8,7	100	4372
IT	50090	2,4	100	45711
LU	908	-2,0	100	899
MK	1352	17,8	100	1069
NL	16546	11,6	100	13997
PL ³	20345	4,4	100	22898
PT	7345	3,2	96	6312
RO	7601	2,9	100	8220
SI	2040	1,4	95	1890
SK	4081	4,6	100	4018
UCTE	360779	5,1		357600
DK_W	3400	1,0	100	4036
UA_W	914	5,2	100	1272



¹ Variation as compared to corresponding month of the previous year

² Power produced in parallel operation (including autoproduction)

³ Average value of each hour



Contact

Boulevard Saint-Michel, 15
B-1040 Brussels – Belgium
Tel +32 2 741 69 40 – Fax +32 2 741 69 49

info@ucte.org
www.ucte.org