

UCTE



March 2004

Monthly provisional values
union for the co-ordination of transmission of electricity

Table of contents ¹		Page
1	Electricity supply situation of the countries	2
2	Physical energy flows	3
3	Monthly consumption	4
4	Monthly consumption variation	6
5	Consumption of the last 12 months	7
6	Variation of the last 12 months' consumption	8
7	Load flows (night)	9
8	Load flows (day)	10
9	Unavailability of international tie lines (major events)	11
10	Network reliability (major events)	13
11	Scheduled exchanges	14
12	Load on the 3 rd Wednesday	15

¹ Monthly provisional values from the UCTE database as of 23 June 2004

1

Electricity supply situation of the countries

March 2004

Countries	Net production in GWh ¹				Exchange balance in GWh	Pump in GWh	Consumption in GWh ¹			
	Hy	Tn	Tc	Total			monthly	Δ ³ [%]	last 12 months	Δ ³ [%]
B	136	3658	3125	6919 ²	894	136	7677	4,7	84751	0,7
D	1935	13854	32846	48635 ²	-1838	748	46049	3,7	506427	0,6
E	3486	4949	12615	21050 ²	-230	339	20481	11,1	226561	5,3
F	6539	36137	6934	49610	-4100	577	44933	13,8	461486	3,6
GR ⁴	518	0	3541	4059 ²	114	49	4124	-6,0	50175	1,6
I	3514	0	20915	24429	4267	939	27757	2,3	321025	2,7
SLO	259	499	444	1202	-58	0	1144	6,8	12472	3,1
HR	774	0	369	1143 ²	318	3	1458	7,4	15650	4,8
BiH	779	0	432	1211	281	0	1492	29,6	13445	n.a.
FYROM	112	0	475	587 ²	3	0	590	-8,0	6211	n.a.
SCG	1513	0	2179	3692	209	113	3788	0,1	39222	n.a.
L	69	0	279	348	305	78	575	4,7	6167	1,7
NL	0	336	7751	8087 ²	1404	0	9491	1,0	109997	1,0
A	2611	0	2382	4993	353	174	5172	10,6	52168	1,2
P	1143	0	2326	3469 ²	523	24	3968	11,5	43747	4,7
CH	2577	2401	270	5248 ²	476	69	5655	8,4	61035	3,5
CZ	272	1765	5000	7037 ²	-1179	62	5796	5,4	60238	1,6
H	9	937	1696	2642 ²	705	0	3347	0,0	38428	2,3
PL ⁵	377	0	12697	13074 ²	-1187	196	11691	-5,4	135937	0,1
SK	438	1291	806	2535 ²	-101	17	2417	0,7	26415	0,2
RO	1455	439	2682	4576 ²	-62	0	4514	0,7	49713	n.a.
BG	284	1539	1902	3725 ²	-442	14	3269	-10,3	35741	n.a.
UCTE	28800	67805	121666	218271²	655	3538	215388	5,4	2357011	1,5
West UA ⁶	14	0	692	706 ²	-286	0	420	1,9	4155	n.a.

¹ Percentage as referred to total values in %

Countries	B	D	E	F	GR ⁴	I	SLO	HR	BiH	FY ROM	SCG	L	NL	A	P	CH	CZ	H	PL	SK	RO	BG	West UA ⁶
Production	99	94	94	100	99	100	95	100	99	100	96	98	100	84	93	100	100	100	100	100	100	100	100
Consumption	99	94	94	100	99	100	95	100	99	100	96	99	100	90	93	100	100	100	100	100	100	100	100

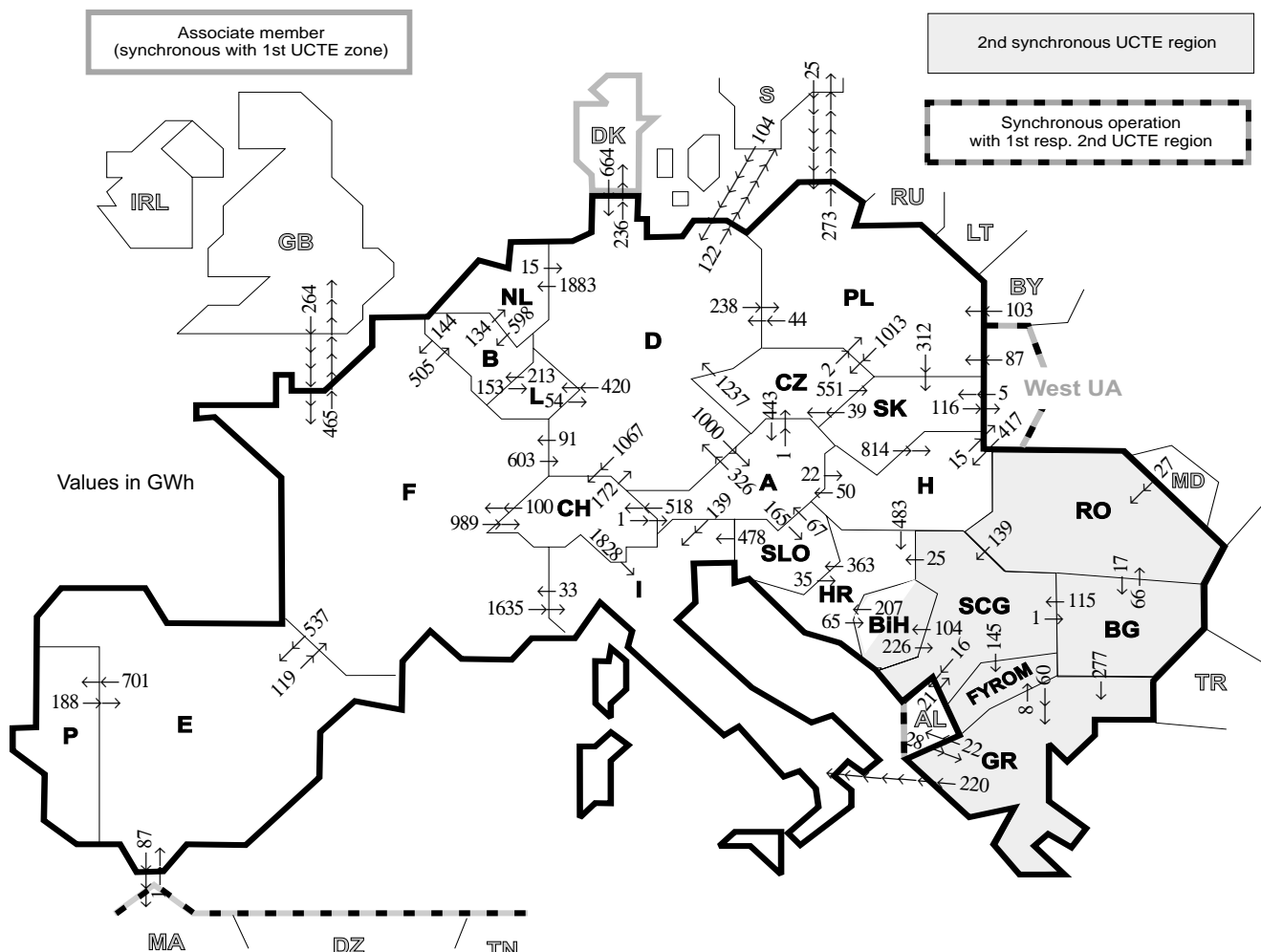
² Including deliveries from industry

³ Variation as compared to corresponding period of the previous year and representativity 100%

⁴ The representativity of data referring to the interconnected system is 99%
The representativity of data referring to the whole country including the isolated systems of Greek island is 91%

⁵ Values for 2003 are gross values, values for 2004 are net values.

⁶ West UA represents the so-called Burshtyn Island synchronously interconnected with UCTE



Exporting countries	Importing countries																			Σ Export						
	B	D	E	F	GR	I	SLO	HR	BIH	FY- ROM	SCG	L	NL	A	P	CH	CZ	H	PL		SK	RO	BG	III¹	DK²	West UA³
B	-	-	-	144	-	-	-	-	-	-	-	153	134	-	-	-	-	-	-	-	-	-	-	-	-	431
D	-	-	-	91	-	-	-	-	-	-	-	420	1883	1000	-	1067	0	-	238	-	-	-	358	236	-	5057
E	-	-	-	119	-	-	-	-	-	-	-	-	-	-	701	-	-	-	-	-	-	-	87	-	-	907
F	505	603	537	-	1635	-	-	-	-	-	-	-	-	-	-	989	-	-	-	-	-	-	465	-	-	4734
GR	-	-	-	-	220	-	-	-	-	8	-	-	-	-	-	-	-	-	-	-	-	0	22	-	-	250
I	-	-	-	33	0	0	-	-	-	-	-	-	-	0	0	-	-	-	-	-	-	-	-	-	-	33
SLO	-	-	-	-	478	-	-	-	-	-	-	-	-	67	-	-	-	-	-	-	-	-	-	-	-	580
HR	-	-	-	-	-	363	-	-	65	-	0	-	-	-	-	-	-	0	-	-	-	-	-	-	-	428
BIH	-	-	-	-	-	-	207	-	-	-	226	-	-	-	-	-	-	-	-	-	-	-	-	-	-	433
FYROM	-	-	-	-	60	-	-	-	-	-	0	-	-	-	-	-	-	-	-	-	-	0	-	-	-	60
SCG	-	-	-	-	-	-	25	104	145	-	-	-	-	-	-	-	-	0	-	-	0	1	16	-	-	291
L	213	54	-	-	-	-	-	-	-	-	-	-	-	-	-	-	-	-	-	-	-	-	-	-	-	267
NL	598	15	-	-	-	-	-	-	-	-	-	-	-	-	-	-	-	-	-	-	-	-	-	-	-	613
A	-	326	-	-	139	165	-	-	-	-	-	-	-	-	-	518	1	22	-	-	-	-	-	-	-	1171
P	-	-	188	-	-	-	-	-	-	-	-	-	-	-	-	-	-	-	-	-	-	-	-	-	-	188
CH	-	172	-	100	1828	-	-	-	-	-	1	-	-	-	-	-	-	-	-	-	-	-	-	-	-	2101
CZ	-	1237	-	-	-	-	-	-	-	-	-	-	-	443	-	-	-	-	2	551	-	-	-	-	-	2233
H	-	-	-	-	-	-	483	-	-	-	0	-	-	50	-	-	-	-	-	0	0	15	15	-	-	548
PL	-	44	-	-	-	-	-	-	-	-	-	-	-	-	-	-	1013	-	-	312	-	-	273	-	0	1642
SK	-	-	-	-	-	-	-	-	-	-	-	-	-	-	-	-	39	814	0	-	-	-	116	-	116	969
RO	-	-	-	-	-	-	-	-	-	-	139	-	-	-	-	-	-	0	-	-	-	17	0	0	-	156
BG	-	-	-	-	277	-	-	-	-	0	115	-	-	-	-	-	-	-	-	-	-	66	0	-	-	458
III¹	-	768	1	264	28	-	-	-	-	-	21	-	-	-	-	-	-	417	215	5	27	0	-	-	-	1746
DK²	-	664	-	-	-	-	-	-	-	-	-	-	-	-	-	-	-	-	-	-	-	-	-	-	-	664
West UA³	-	-	-	-	-	-	-	-	-	-	-	-	-	-	-	-	-	417	87	5	0	-	-	-	-	509
Σ Import	1316	3219	726	751	365	4300	528	750	169	153	501	573	2017	1561	701	2574	1053	1253	455	868	93	18	1352	236	131	25296

Sum of physical energy flows between UCTE countries = 22198 GWh Total physical energy flows = 25296 GWh

¹ III = Third countries: Albania, Belarus, Denmark, Great Britain, Morocco, Republic of Moldavia, Sweden, Republic of Turkey and West Ukraine

² Denmark (Jutland)

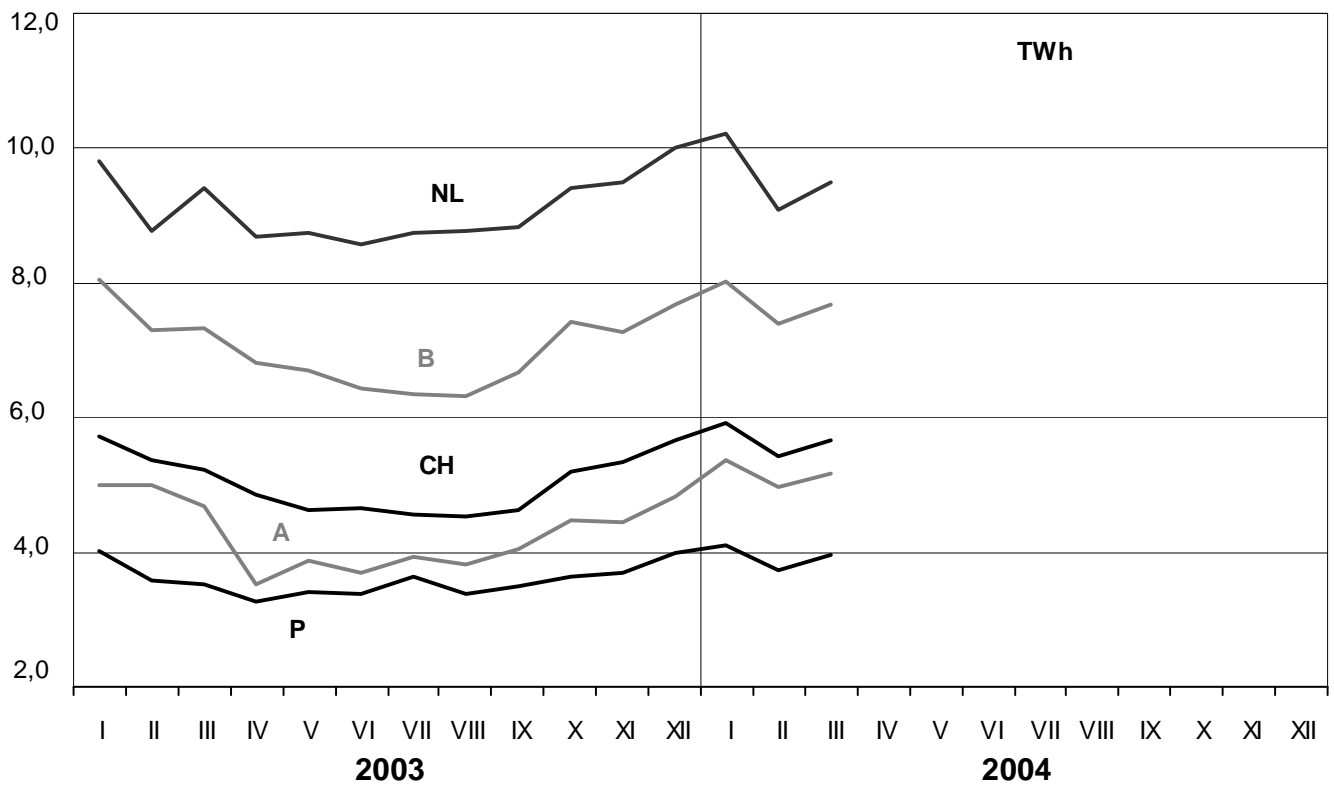
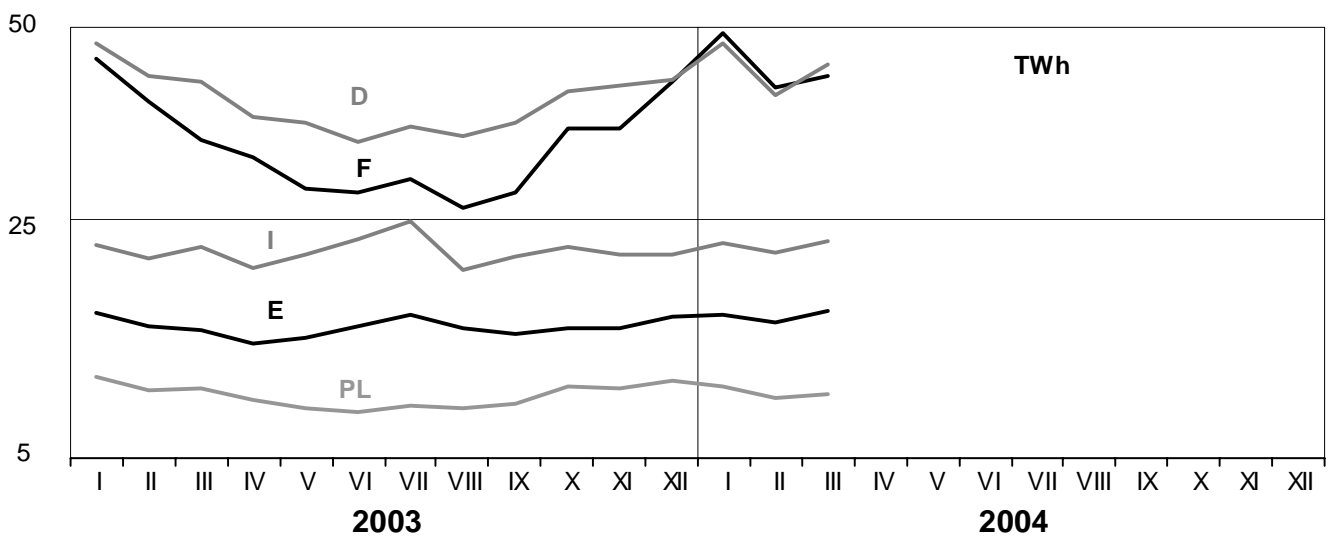
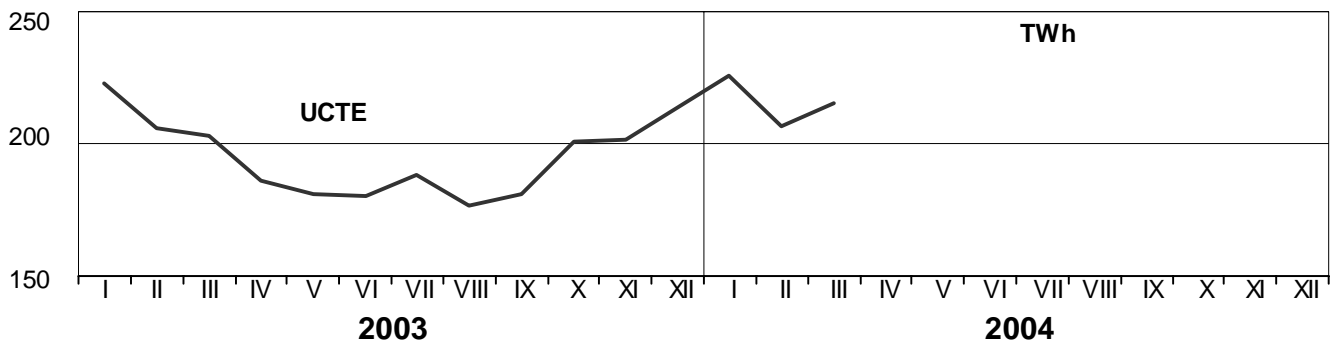
³ West UA represents the so-called Burshtyn Island synchronously interconnected with UCTE

These physical energy flows were measured on the cross-frontier transmission lines (≥ 110 kV) listed in table 9 of the Statistical Yearbook. These values may differ from the official statistics and the exchange balances in chapter 1.

3

Monthly consumption

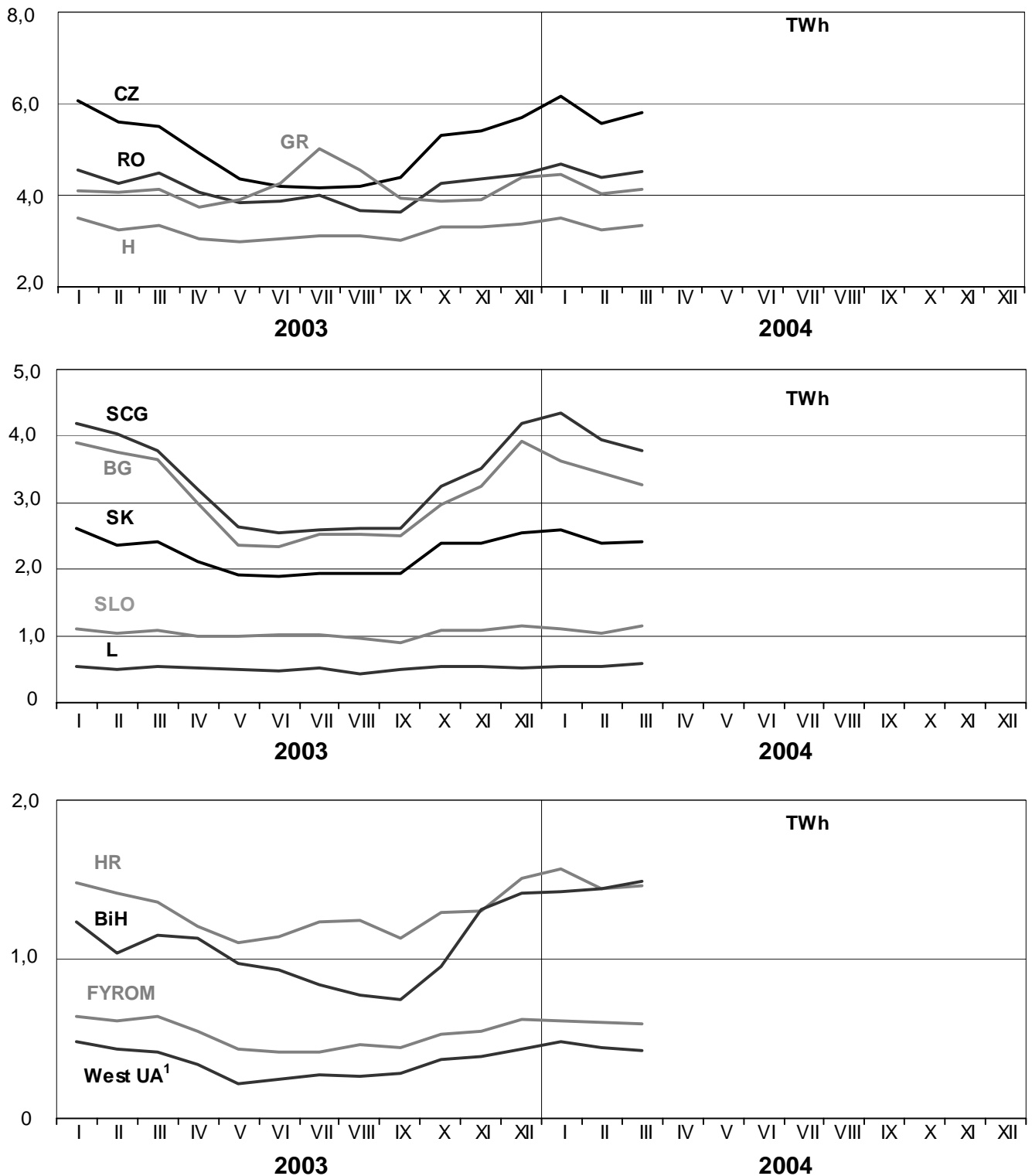
March 2004



3

Monthly consumption

March 2004

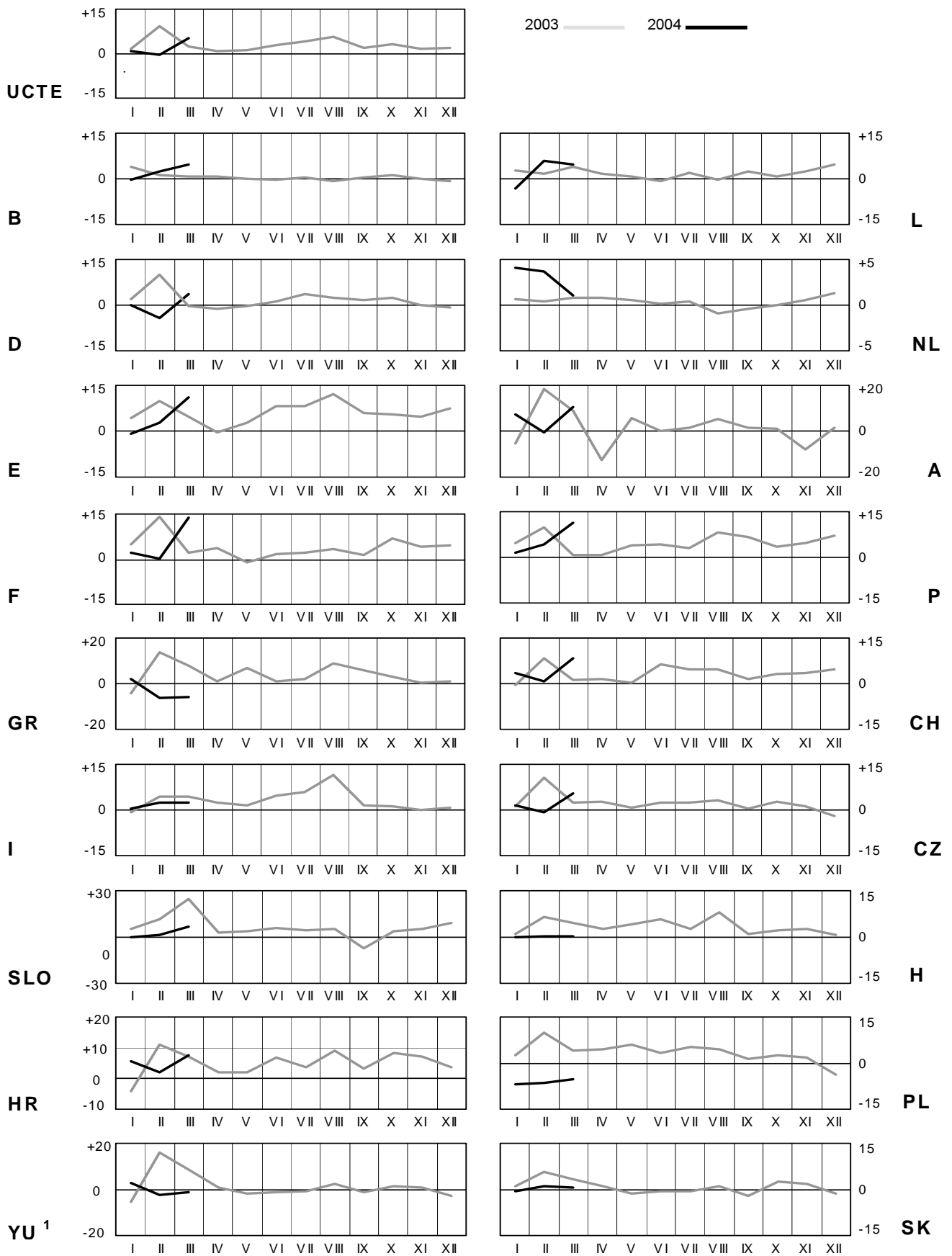


¹ West UA represents the so-called Burshtyn Island synchronously interconnected with UCTE

4

Monthly consumption variation

March 2004

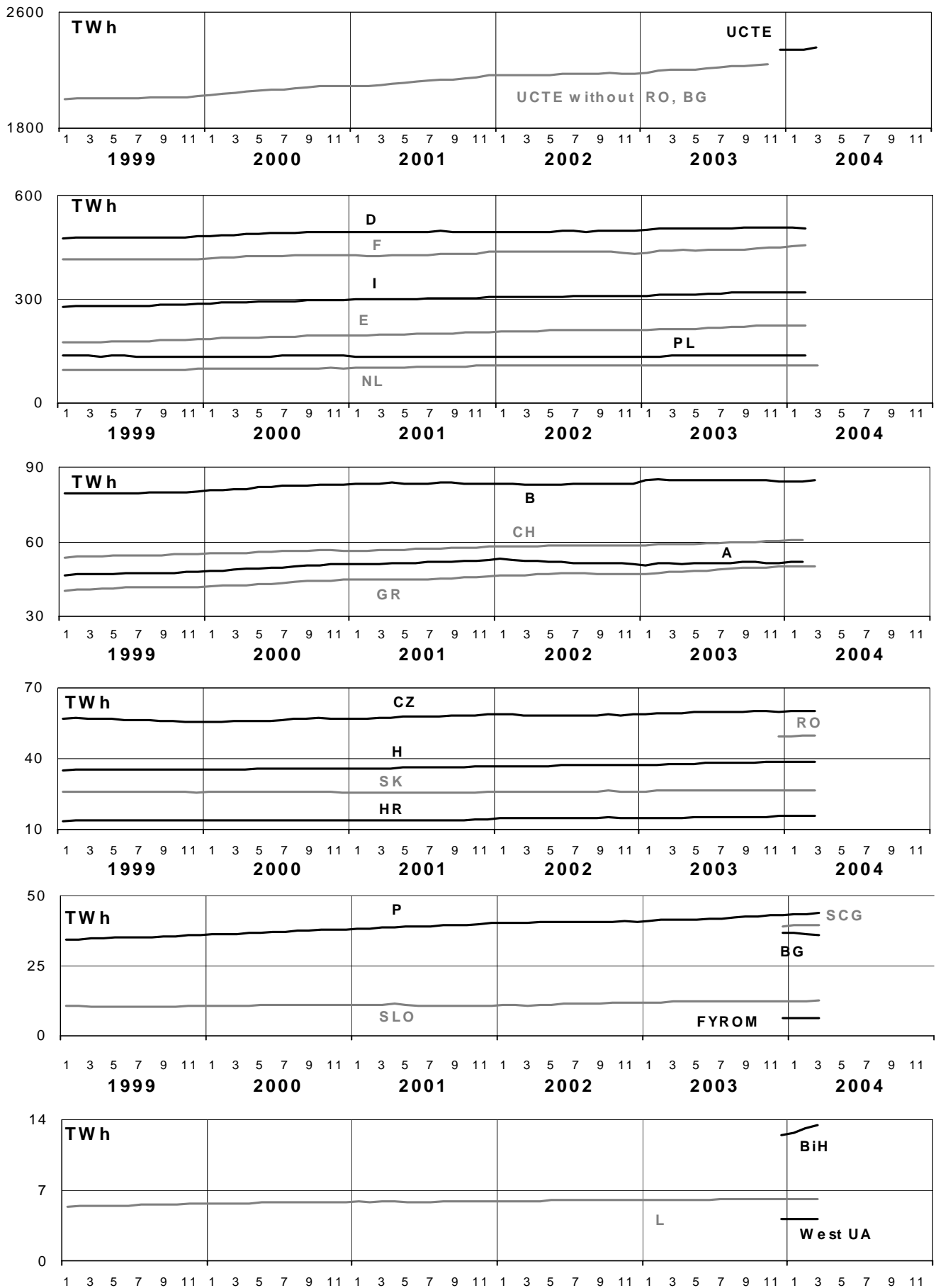


¹YU = FRY + FYROM (Federal Republic of Yugoslavia and former Yugoslav Republic of Macedonia)

5

Consumption of the last 12 months

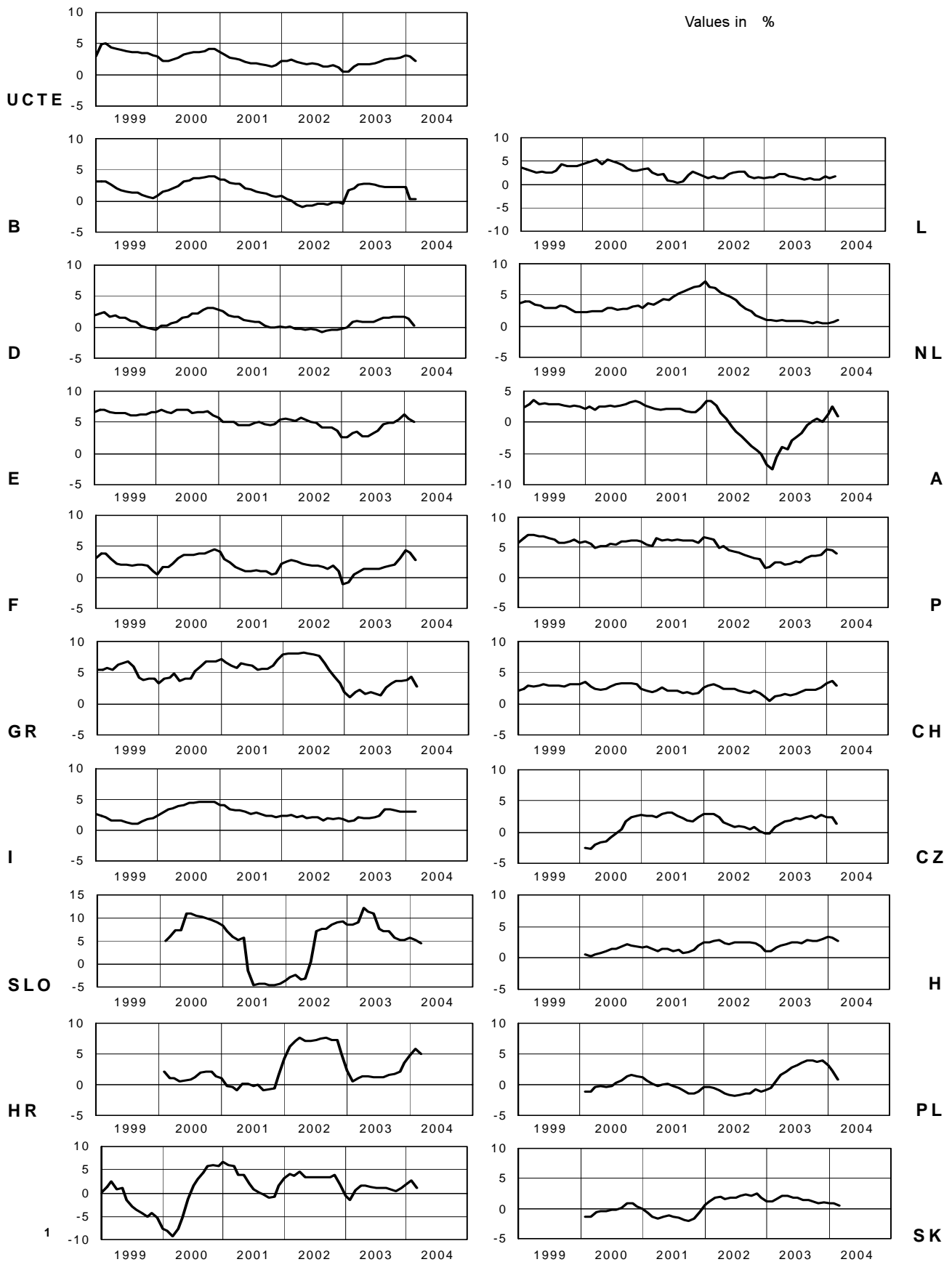
March 2004



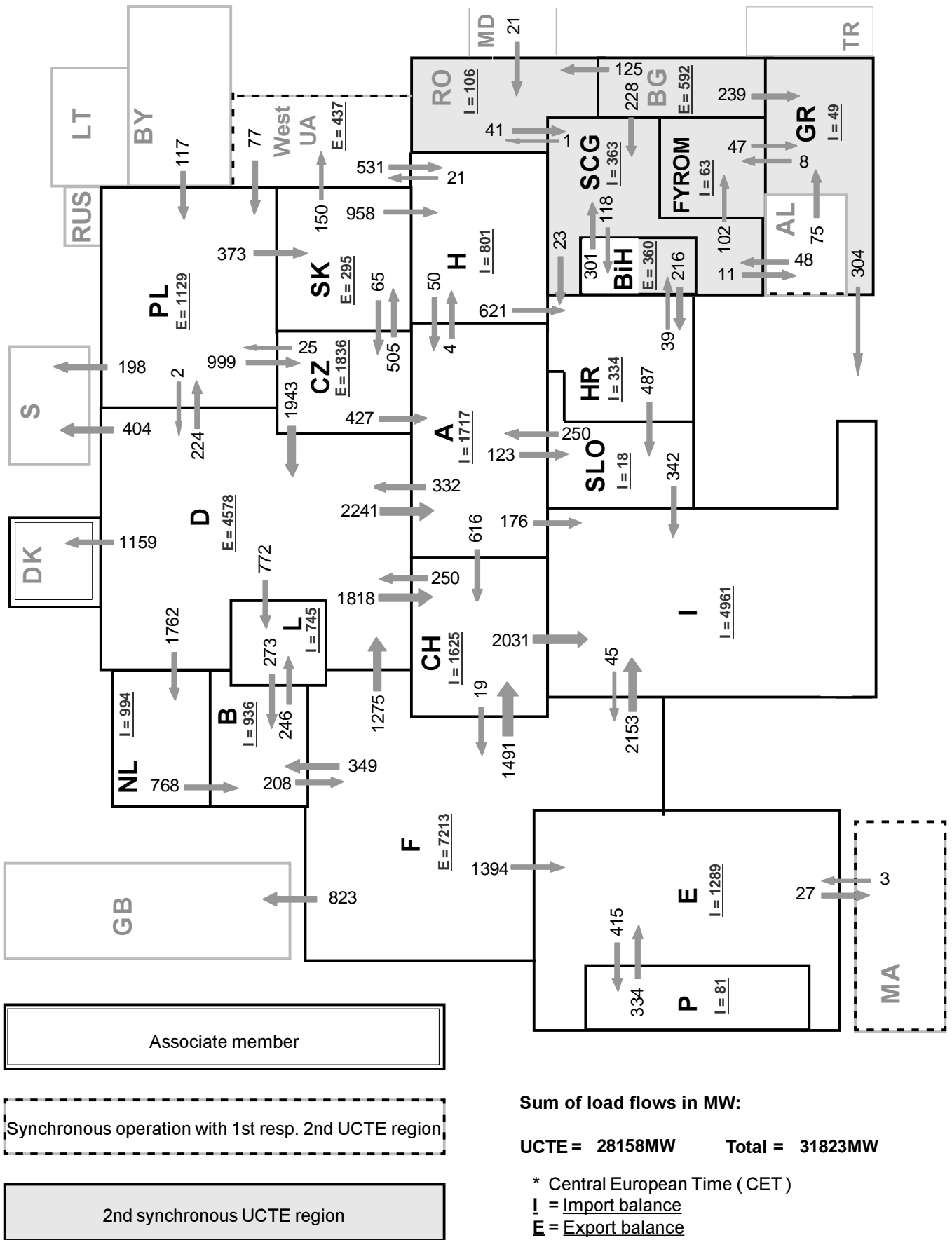
6

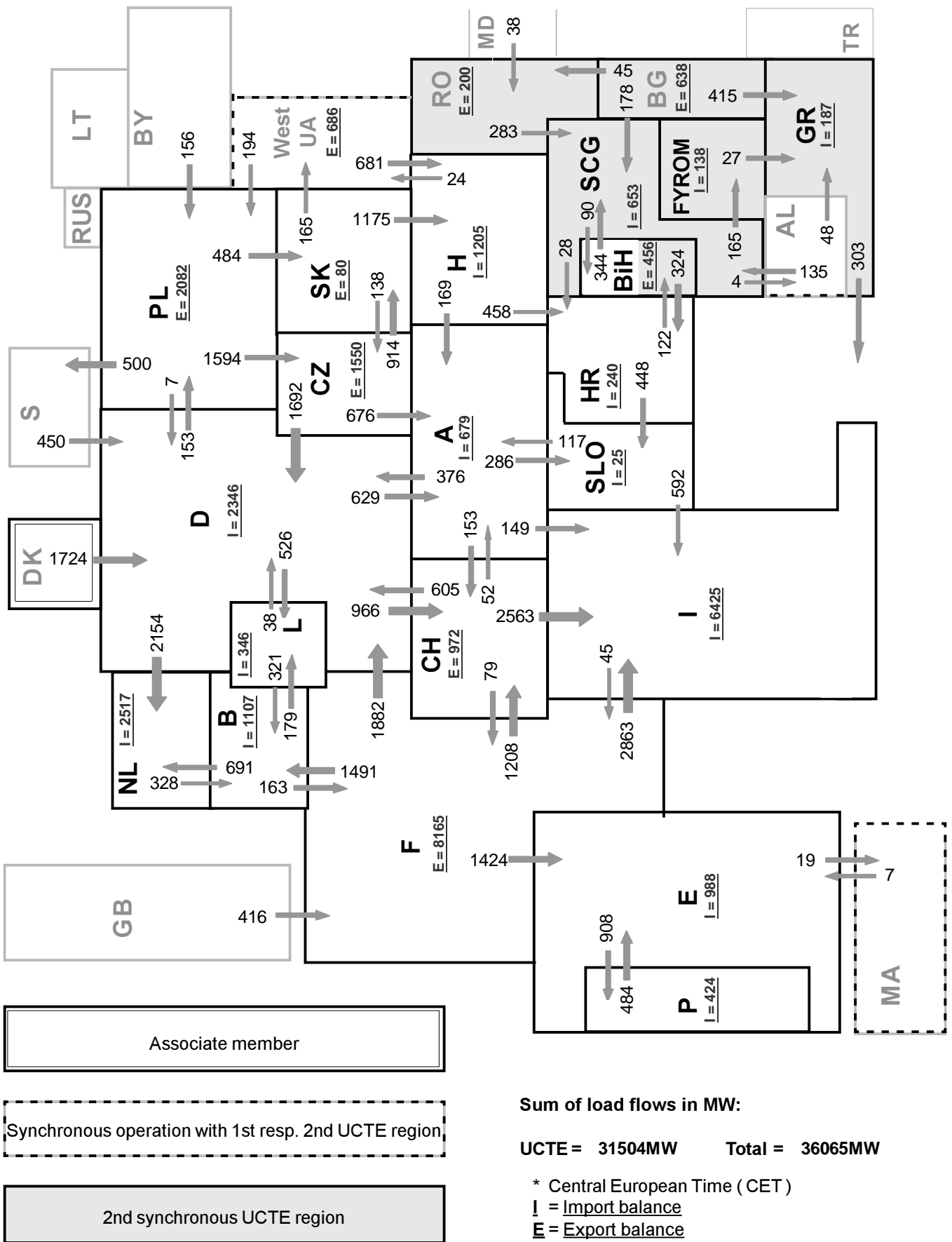
Variation of the last 12 months' consumption

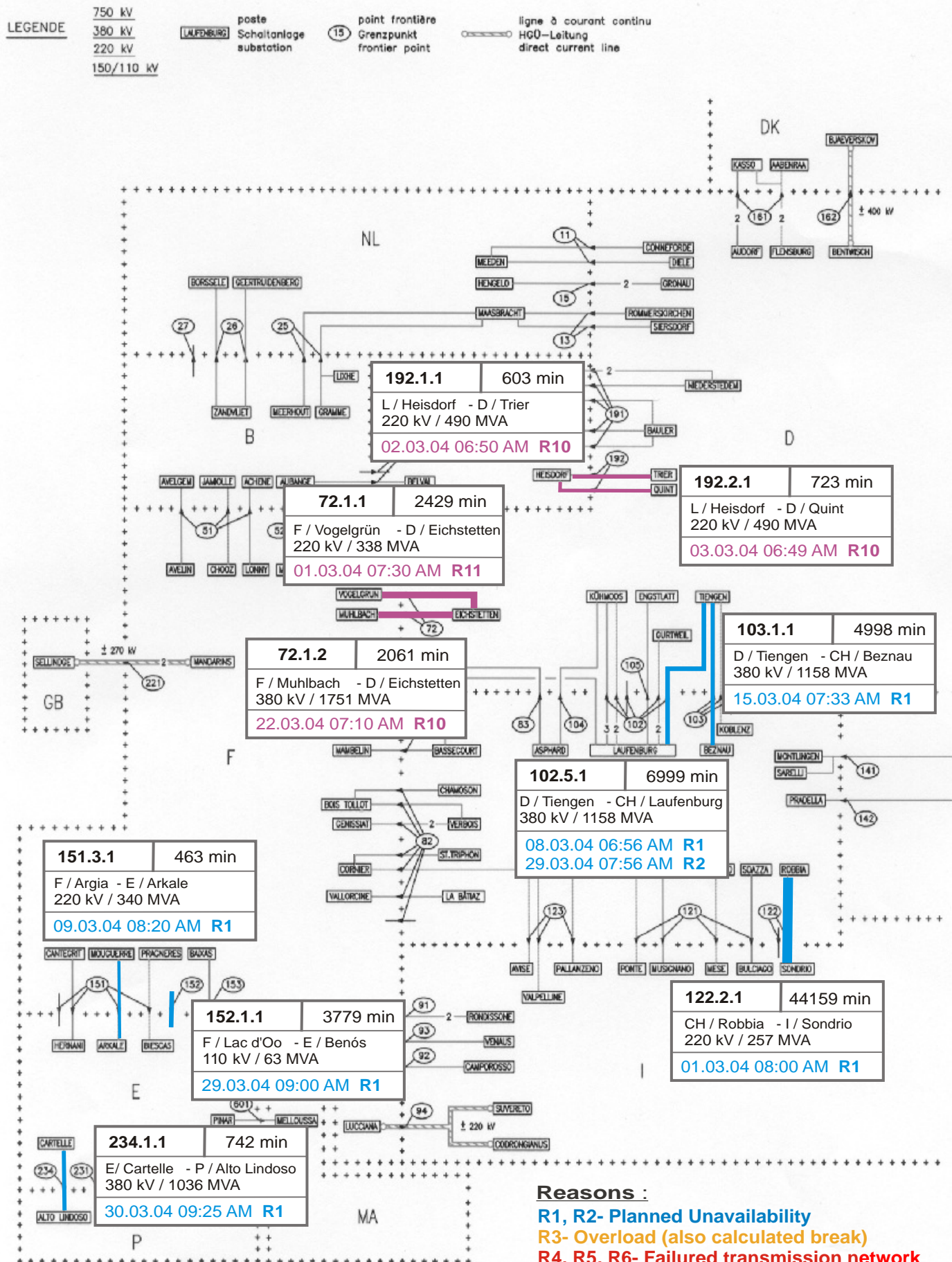
March 2004

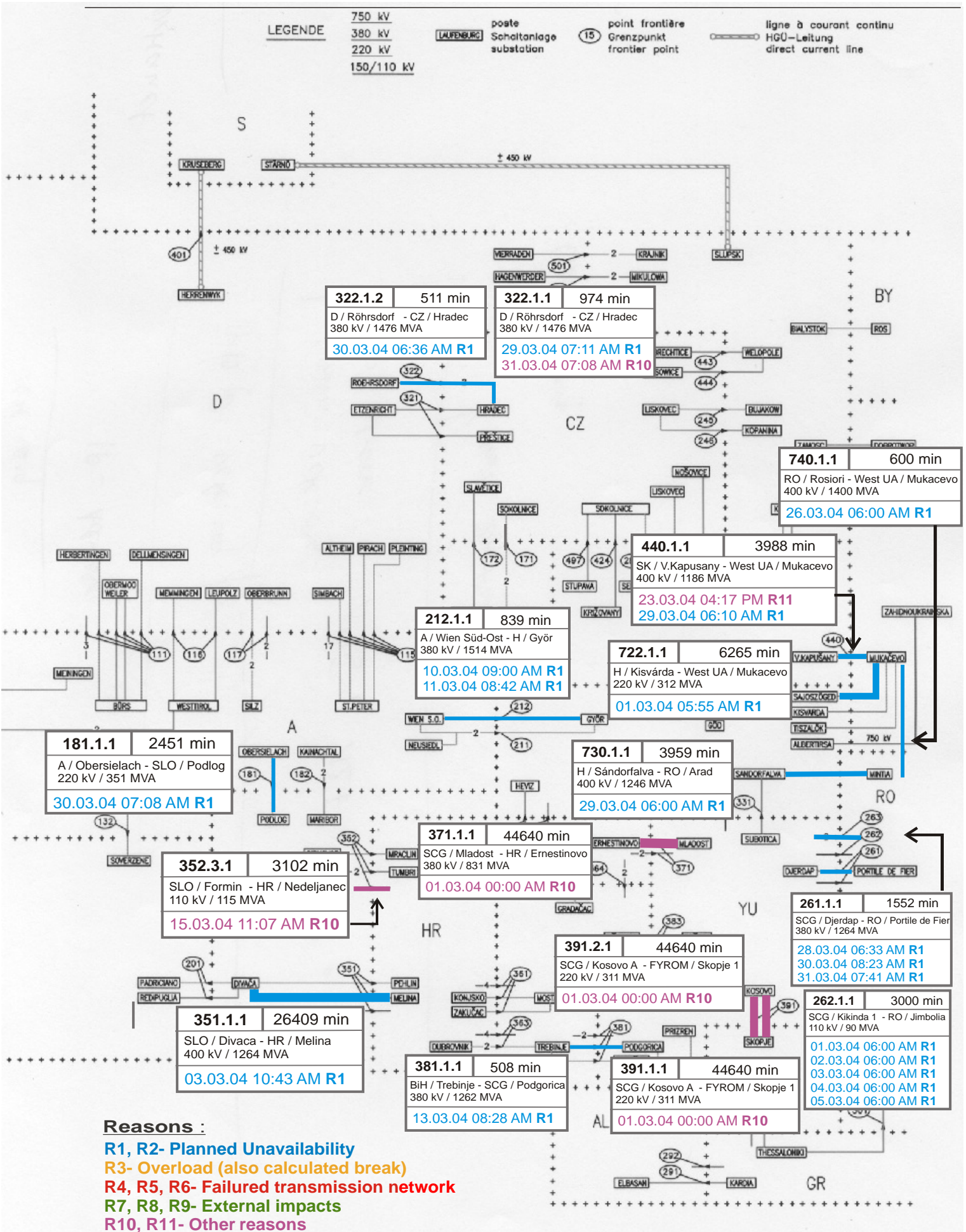


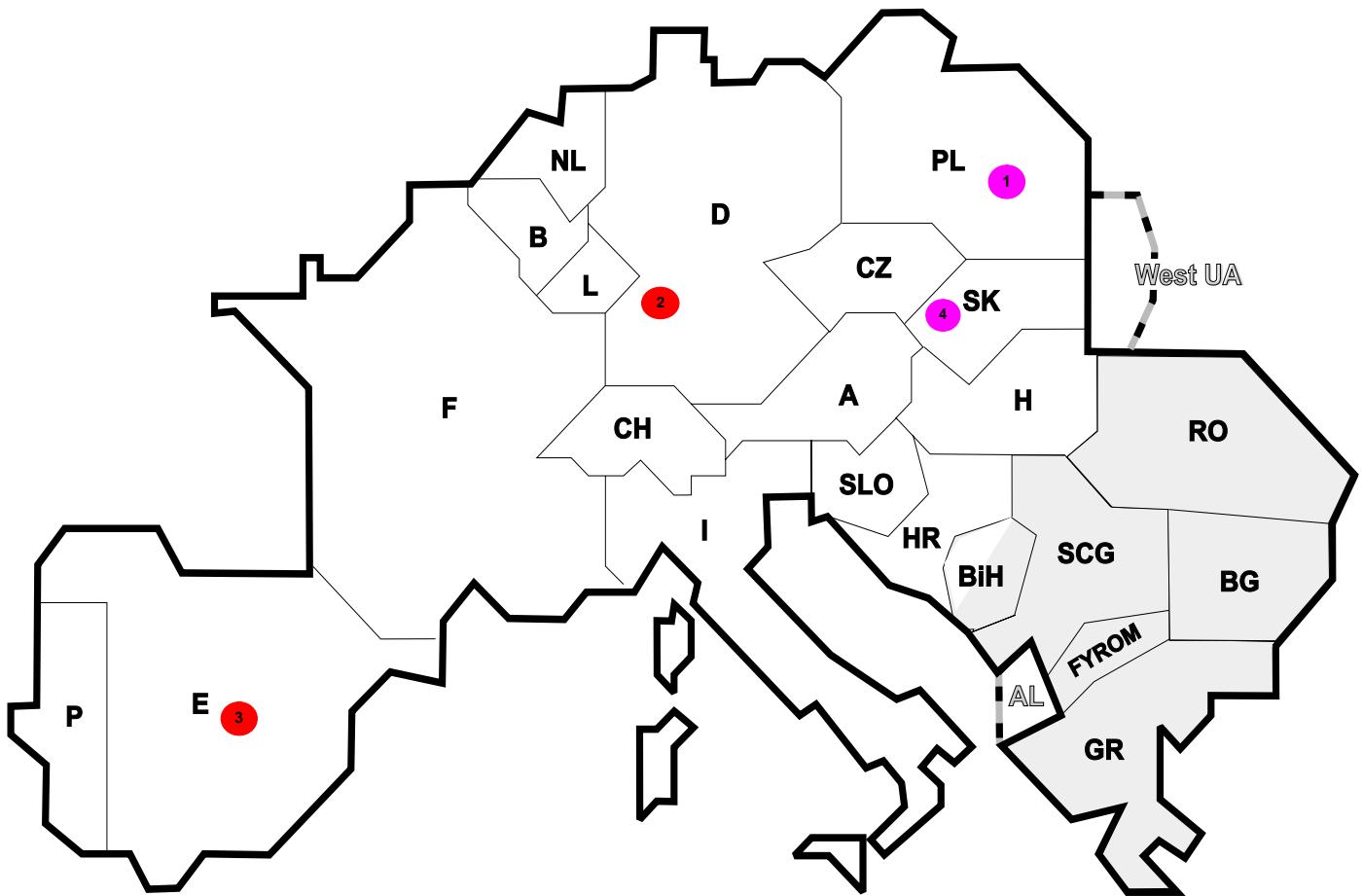
¹ YU = FRY + FYROM (Federal Republic of Yugoslavia and former Yugoslav Republic of Macedonia)











Reasons:

R4 Overload (also calculated brake)

R5 False operation

R6 Failure in protection device or other element

R7 Outside impacts (animals, fire, avalanches,...)

R8 Very exceptional conditions (weather, natural disaster,...)

R9 Other reasons

R10 Unknown reasons

Nbr	Country	Substation	Reason	Energy not supplied [MWh]	Total loss of power [MW]	Restoration time [min]	Equivalent time of interruption ¹
1	PL	Polaniec	R9	382	285	154	1,48
2	D	BASF W 210	R5	71	120	82	0,07
3	E	VIC 220 kV	R5	20	0	4	0,00
4	SK	Lemesany	R9	3	20	10	0,06

¹ (year [in min] * energy not supplied) / consumption last 12 months

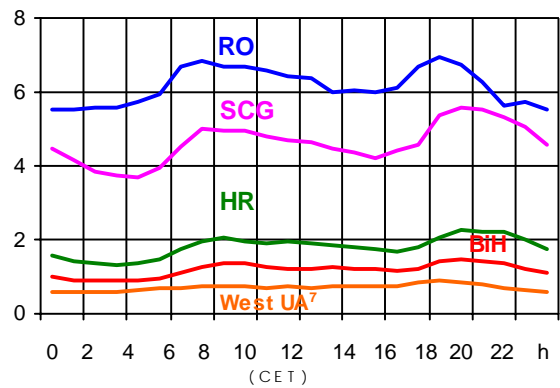
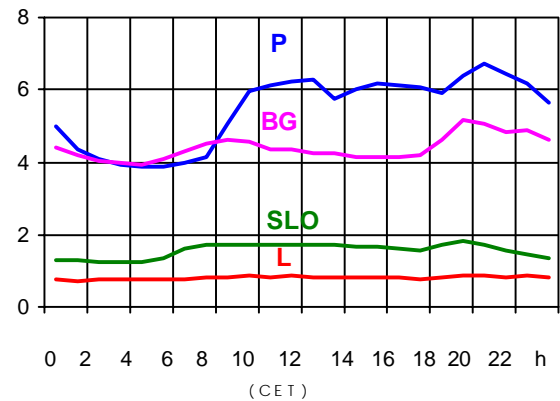
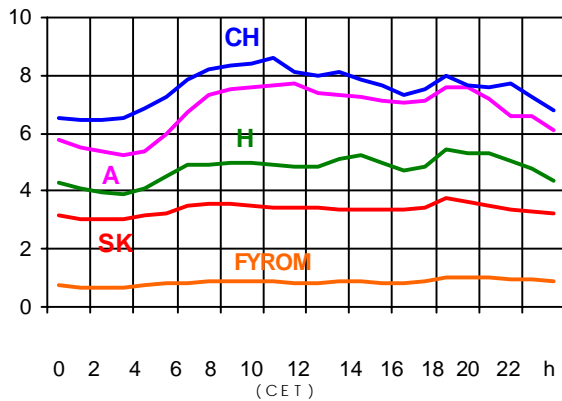
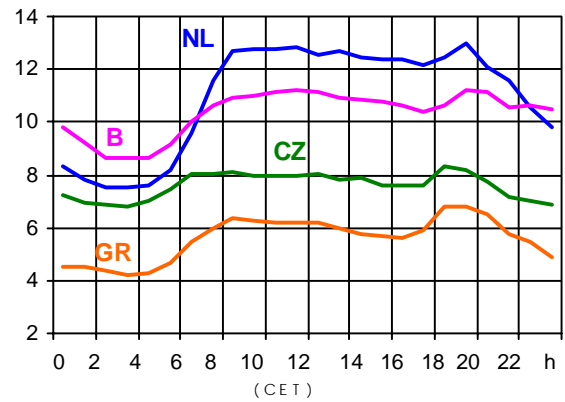
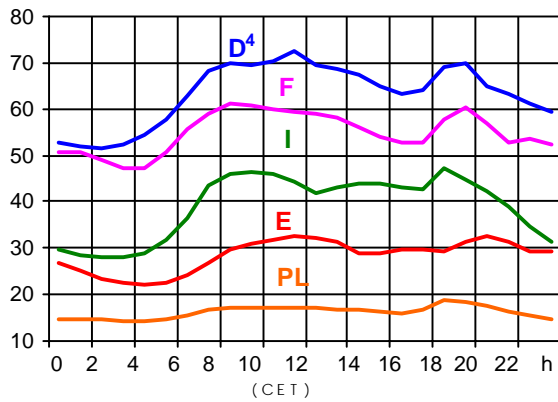
Control area	Prog_exp	Prog_imp	Prog_exp3	Prog_imp3	Prog_exp11	Prog_imp11
B	572470	1399430	680	1616	703	1775
D	4289558	2652543	3785	2672	3006	3947
E	n.a.	n.a.	n.a.	n.a.	n.a.	n.a.
F	7281423	3278328	10092	2906	10177	1992
GR	224651	341894	300	483	300	513
I	32933	430070	45	5006	45	6470
SLO	640614	588855	918	916	1002	1099
HR	278382	598954	598	623	540	476
BiH	89300	150000	390	10	403	20
FYROM	n.a.	n.a.	n.a.	n.a.	n.a.	n.a.
SCG	299960	511412	385	688	498	1150
NL	498219	1903719	2167	1154	2689	170
A	412695	578420	688	316	894	674
P	112646	635503	250	323	654	1098
CH	1895442	2366319	1813	3318	3869	2298
CZ	1868718	693126	2532	686	2648	1109
H	221593	925870	442	1257	301	1508
PL	1354633	139016	1292	155	2332	200
SK	648250	467002	884	508	1000	816
RO	414160	205305	290	275	690	319
BG	n.a.	n.a.	n.a.	n.a.	n.a.	n.a.
West UA ¹	286194	0	373	0	500	0

- Control areas can differ from national borders (i.e. German block which includes parts of A, L and DK).
- Values are calculated on an hourly base (MWh).
- This values are not the provisional values entered in the VULCANUS system, but the definitive values after an eventual correction during the actual date.
- Prog_exp: Sum of all positive values of every hour of every border
- Prog_imp: Sum of all negative values of every hour of every border
- Prog_exp3: Sum of all positive values the third Wednesday from 02:00 to 03:00 a.m.
- Prog_imp3: Sum of all negative values the third Wednesday from 02:00 to 03:00 a.m.
- Prog_exp11: Sum of all positive values the third Wednesday from 10:00 to 11:00 a.m.
- Prog_imp11: Sum of all negative values the third Wednesday from 10:00 to 11:00 a.m.

¹ West UA represents the so-called Burshtyn Island synchronously interconnected with UCTE

Consumption hourly load curves¹ on 17.03.04

Values in GW



	Peak load MW	Δ % ²	Load representativity ¹ %	Parallel power ³ MW
B	11230	-0,8	100	10075
D	72500	1,0	91	77100
E	32646	12,9	94	32646
F	60997	-3,9	100	67824
GR ⁶	6818	-10,4	99	6043
I	47169	-0,7	100	40046
SLO	1819	2,8	95	1658
HR	2288	-0,9	100	2157
BIH	1500	-1,8	99	1748
FYROM	1000	-11,6	100	713
SCG	5581	-7,2	96	4164
L	882	1,8	99	816
NL	12970	2,0	90	10208
A	7744	1,8	82	7601
P	6709	5,4	93	6713
CH	8559	3,2	100	9533
CZ	8338	-2,6	100	10364
H	5451	-2,4	100	3751
PL	18670	-6,8	100	18801
SK	3727	-2,8	100	3507
RO	6972	-2,7	100	6577
BG	5135	-11,7	100	5001
UCTE	319886	0,2		327046
DK ⁵				2645
West UA ⁷	877	7,5	100	1204

¹ Percentage as referred to total values in %

² Variation as compared to corresponding month of the previous year

³ Power produced in parallel operation (including autoproduction)

⁴ Values estimated on the basis of former data from the German Federal Office for Statistics

⁵ Denmark (Jutland)

⁶ The representativity of data referring to the interconnected system is 99%
The representativity of data referring to the whole country including the isolated systems of the Greek island is 91%

⁷ West UA represents the so-called Burshtyn Island synchronously with the UCTE



Contact

Boulevard Saint-Michel, 15
B-1040 Brussels - Belgium
Tel +3227416940 - Fax +3227416949

info@ucte.org
www.ucte.org