

# UCTE



## March 2003

Monthly provisional values  
union for the co-ordination of transmission of electricity

<b>Table of contents <sup>1</sup></b>		<b>Page</b>
1	Electricity supply situation of the countries	2
2	Physical energy flows	3
3	Monthly consumption	4
4	Monthly consumption variation	5
5	Consumption of last 12 months	6
6	Variation of the last 12 months' consumption	7
7	Load flows (night)	8
8	Load flows (day)	9
9	Unavailability of international tie lines ( major events )	10
10	Network reliability ( major events )	12
11	Scheduled exchanges	13
12	Load on the 3 <sup>rd</sup> Wednesday	14

<sup>1</sup> Monthly provisional values as of UCTE database from 02 July 2003

## 1

## Electricity supply situation of the countries

March 2003

Countries	Net production in GWh <sup>1</sup>				Exchange balance in GWh	Pump in GWh	Consumption in GWh <sup>1</sup>			
	Hy	Tn	Tc	Total			monthly	Δ <sup>3</sup> [%]	last 12 months	Δ <sup>3</sup> [%]
B	135	3565	3007	6707 <sup>2</sup>	749	126	7330	1,5	83971	1,4
D	1923	13871	30683	46477 <sup>2</sup>	-1247	645	44585	0,2	504149	2,0
E	4640	4672	8971	18283 <sup>2</sup>	247	369	18161	3,2	213241	2,8
F	5746	35959	3905	45610	-6975	611	38024	1,4	439563	0,6
GR	472	0	3514	3986 <sup>2</sup>	190	53	4123	7,9	47860	2,3
I	3334	0	19877	23211	4836	908	27139	4,4	312179	2,0
SLO	154	492	463	1109	-38	0	1071	24,2	12094	10,7
HR	545	0	558	1103 <sup>2</sup>	257	1	1359	7,2	14895	1,4
BiH	470	0	556	1026	125	0	1151	n.a.	n.a.	n.a.
FYROM	164	0	475	639 <sup>2</sup>	2	0	641	n.a.	n.a.	n.a.
SCG	1213	0	2377	3590	240	45	3785	n.a.	n.a.	n.a.
L	66	0	132	198	422	71	549	3,6	6092	-4,1
NL	0	338	7711	8049 <sup>2</sup>	1326	0	9375	0,6	108694	2,8
A	2419	0	1918	4337	565	226	4676	8,7	51542	1,3
P	1958	0	1490	3448 <sup>2</sup>	115	39	3524	1,9	41317	2,0
CH	2390	2392	261	5043 <sup>2</sup>	405	219	5229	1,5	58860	1,9
CZ	224	1406	5118	6748 <sup>2</sup>	-813	48	5887	9,8	59680	1,5
H	14	1201	1665	2880 <sup>2</sup>	466	0	3346	4,6	37557	2,0
PL <sup>5</sup>	342	0	13054	13396 <sup>2</sup>	-843	194	12359	4,0	135838	1,3
SK	389	1341	883	2613 <sup>2</sup>	-199	13	2401	3,4	26373	2,7
<b>UCTE</b>	<b>28204</b>	<b>67564</b>	<b>111536</b>	<b>207304<sup>2</sup></b>	<b>-857</b>	<b>3607</b>	<b>202840</b>	<b>2,7</b>	<b>2197415</b>	<b>1,3</b>
RO	1335	467	2897	4699 <sup>2</sup>	-217	0	4482	n.a.	n.a.	n.a.
BG	271	1860	2021	4152 <sup>2</sup>	-470	39	3643	n.a.	n.a.	n.a.
West-UA	9	0	664	673 <sup>2</sup>	-261	0	412	n.a.	n.a.	n.a.

<sup>1</sup> Percentage as referred to total values in %

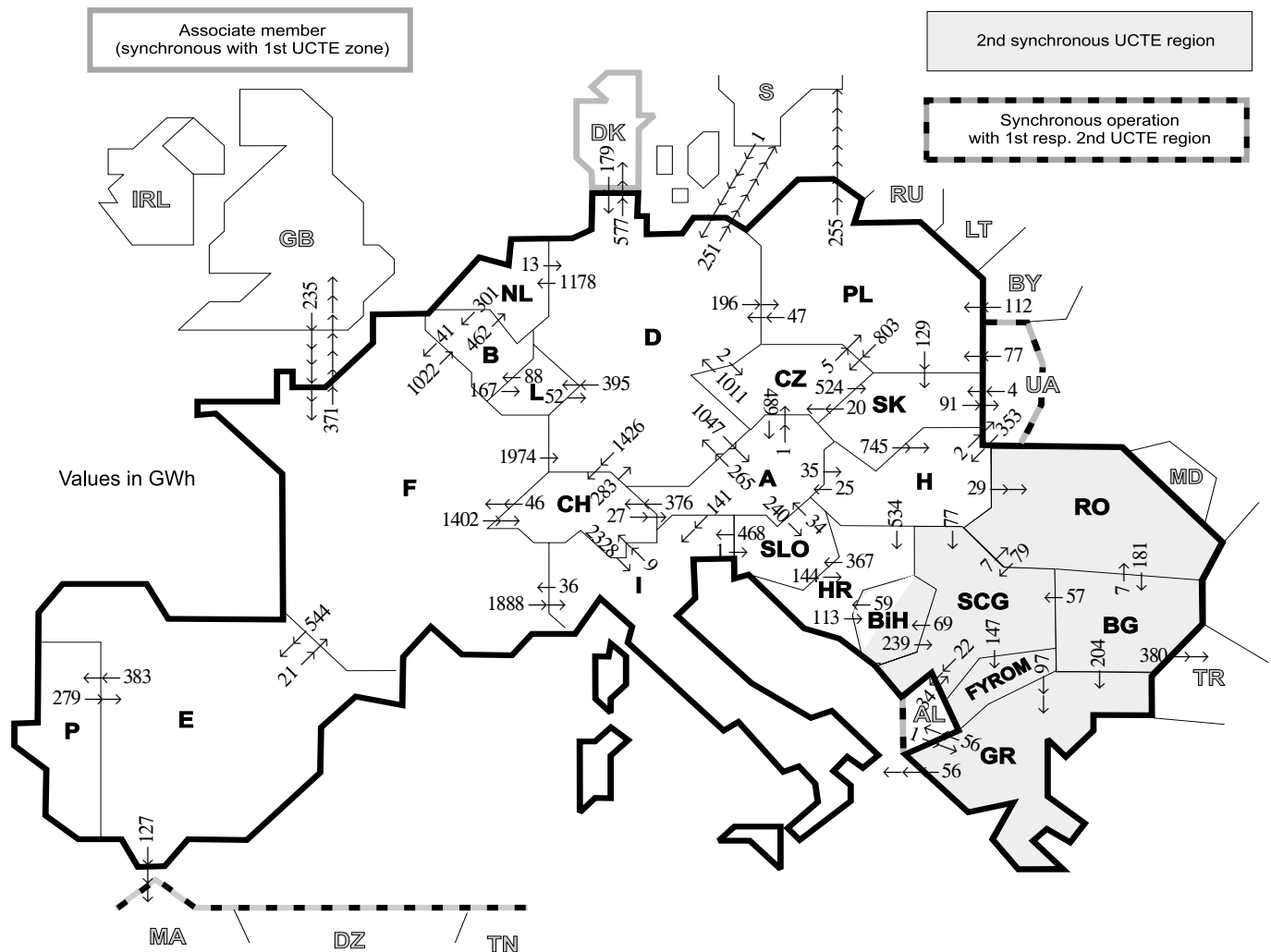
Countries	B	D	E	F	GR <sup>4</sup>	I	SLO	HR	BiH	FY- ROM	SCG	L	NL	A	P	CH	CZ	H	PL	SK	RO	BG	West- UA
Production	99	94	94	97	93	100	95	100	99	100	96	98	100	84	91	100	100	100	100	100	100	100	100
Consumption	99	94	94	97	93	100	95	100	99	100	96	99	100	90	91	100	100	100	100	100	100	100	100

<sup>2</sup> Including deliveries from industry

<sup>3</sup> Variation as compared to corresponding period of the previous year and representativity 100%

<sup>4</sup> The representativity of data referring to the whole country including the isolated systems of the Greek island is 93%.  
The representativity of data referring interconnected system on the mainland is 99%.

<sup>5</sup> Production values are gross values.



Exporting countries	Importing countries																			Σ Export							
	B	D	E	F	GR	I	SLO	HR	BIH	FY-ROM	SCG	L	NL	A	P	CH	CZ	H	PL		SK	RO	BG	West-UA	DK <sup>2</sup>	III <sup>1</sup>	
B	-	-	-	41	-	-	-	-	-	-	-	167	462	-	-	-	-	-	-	-	-	-	-	-	-	-	670
D	-	-	-	0	-	-	-	-	-	-	-	395	1178	1047	-	1426	2	-	196	-	-	-	-	577	828	5072	
E	-	-	-	21	-	-	-	-	-	-	-	-	-	-	383	-	-	-	-	-	-	-	-	-	-	127	531
F	1022	1974	544	-	-	1888	-	-	-	-	-	-	-	-	-	1402	-	-	-	-	-	-	-	-	-	371	7201
GR	-	-	-	-	56	-	-	-	-	0	-	-	-	-	-	-	-	-	-	-	-	0	-	-	-	56	112
I	-	-	-	36	0	1	-	-	-	-	-	-	-	0	9	-	-	-	-	-	-	-	-	-	-	46	
SLO	-	-	-	-	468	-	144	-	-	-	-	-	-	34	-	-	-	-	-	-	-	-	-	-	-	646	
HR	-	-	-	-	-	367	113	-	0	-	-	-	-	-	-	-	-	0	-	-	-	-	-	-	-	480	
BIH	-	-	-	-	-	59	-	-	239	-	-	-	-	-	-	-	-	-	-	-	-	-	-	-	-	298	
FYROM	-	-	-	97	-	-	-	-	0	-	-	-	-	-	-	-	-	-	-	-	-	0	-	-	-	97	
SCG	-	-	-	-	-	0	69	147	-	-	-	-	-	-	-	-	-	0	-	-	7	3	-	-	22	248	
L	88	52	-	-	-	-	-	-	-	-	-	-	-	-	-	-	-	-	-	-	-	-	-	-	-	140	
NL	301	13	-	-	-	-	-	-	-	-	-	-	-	-	-	-	-	-	-	-	-	-	-	-	-	314	
A	-	265	-	-	141	240	-	-	-	-	-	-	-	-	-	-	-	-	-	-	-	-	-	-	-	1058	
P	-	-	279	-	-	-	-	-	-	-	-	-	-	-	-	-	-	-	-	-	-	-	-	-	-	279	
CH	-	283	-	46	2328	-	-	-	-	-	-	-	27	-	-	-	-	-	-	-	-	-	-	-	-	2684	
CZ	-	1011	-	-	-	-	-	-	-	-	-	489	-	-	-	-	-	5	524	-	-	-	-	-	-	2029	
H	-	-	-	-	-	-	534	-	-	-	77	-	-	-	-	-	-	-	0	29	-	2	-	-	2	667	
PL	-	47	-	-	-	-	-	-	-	-	-	-	-	-	-	803	-	-	129	-	-	0	-	0	0	1234	
SK	-	-	-	-	-	-	-	-	-	-	-	-	-	-	-	20	745	0	-	-	-	-	91	-	91	856	
RO	-	-	-	-	-	-	-	-	-	79	-	-	-	-	-	-	0	-	-	-	-	181	-	-	0	260	
BG	-	-	-	204	-	-	-	-	0	57	-	-	-	-	-	-	-	-	-	-	7	-	-	-	380	648	
West-UA	-	-	-	-	-	-	-	-	-	-	-	-	-	-	-	-	353	77	4	0	-	-	-	-	-	434	
DK <sup>2</sup>	-	179	-	-	-	-	-	-	-	-	-	-	-	-	-	-	-	-	-	-	-	-	-	-	-	179	
III <sup>1</sup>	-	180	0	235	1	-	-	-	-	-	34	-	-	-	-	-	-	353	189	4	0	0	-	-	-	996	
Σ Import	1411	3825	823	379	302	4881	608	737	182	147	486	562	1640	1622	383	3213	826	1133	390	657	43	184	93	577	2132	26566	

Sum of physical energy flows between UCTE countries = 23531 GWh

Total physical energy flows = 26566 GWh

<sup>1</sup> III = Third countries: Albania, Belarus, Denmark, Great Britain, Morocco, Republic of Moldavia, Sweden, Republic of Turkey and West-Ukraine

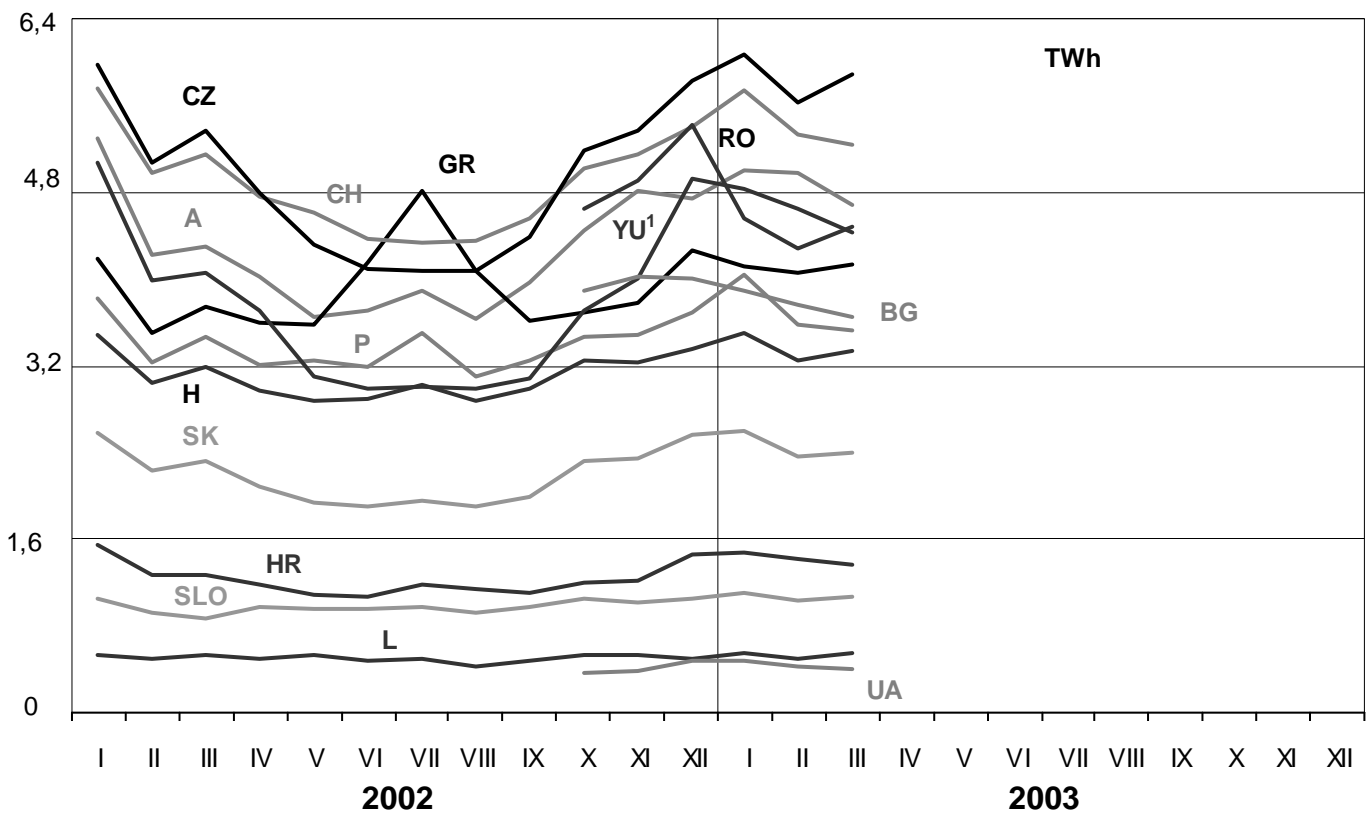
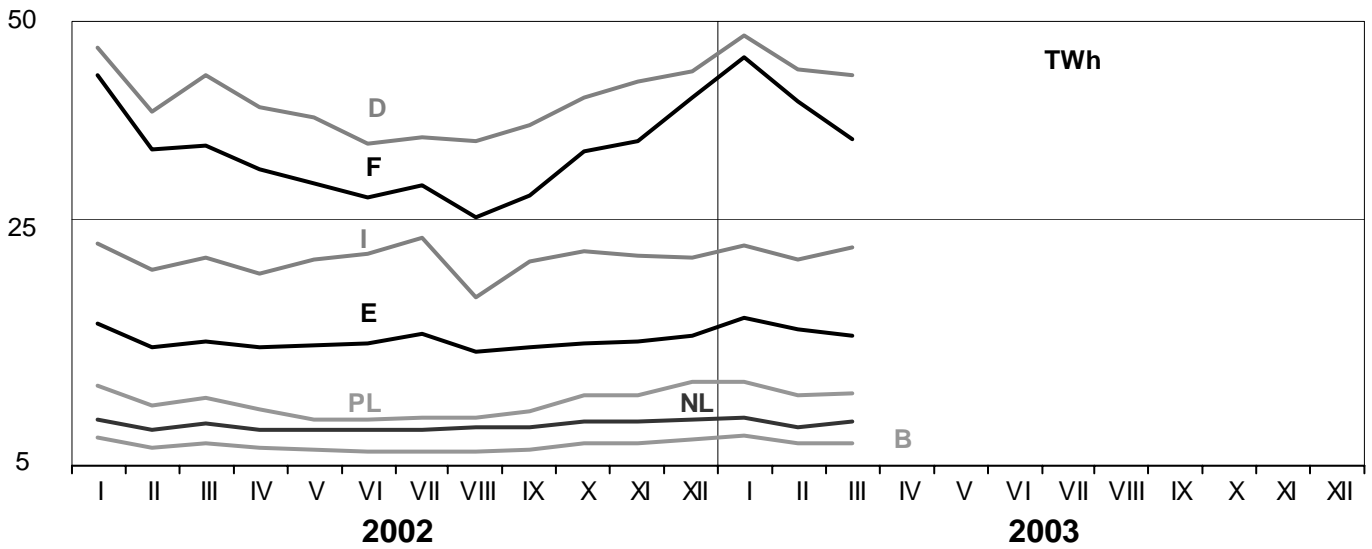
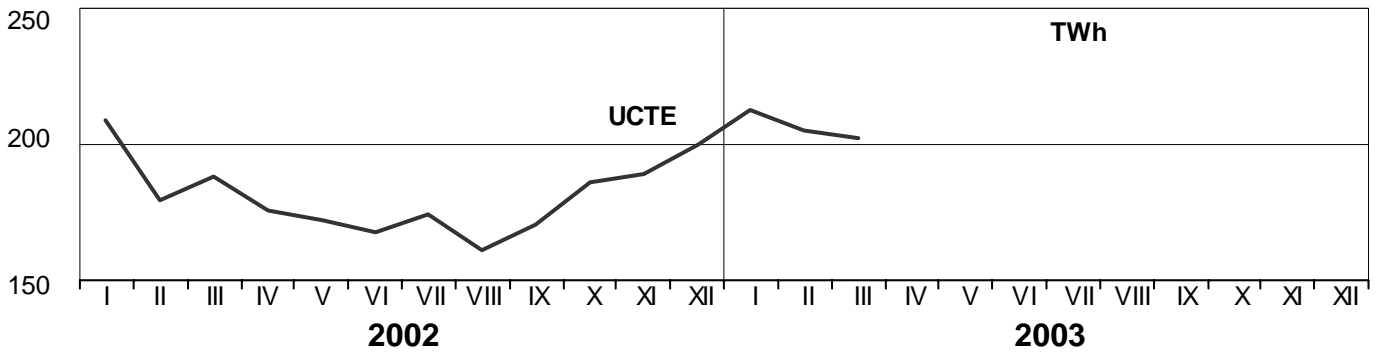
<sup>2</sup> Denmark (Jutland)

These physical energy flows were measured on the cross-frontier transmission lines (≥ 110 kV) listed in table 9 of the Statistical Yearbook. These values may differ from the official statistics and the exchange balances in chapter 1.

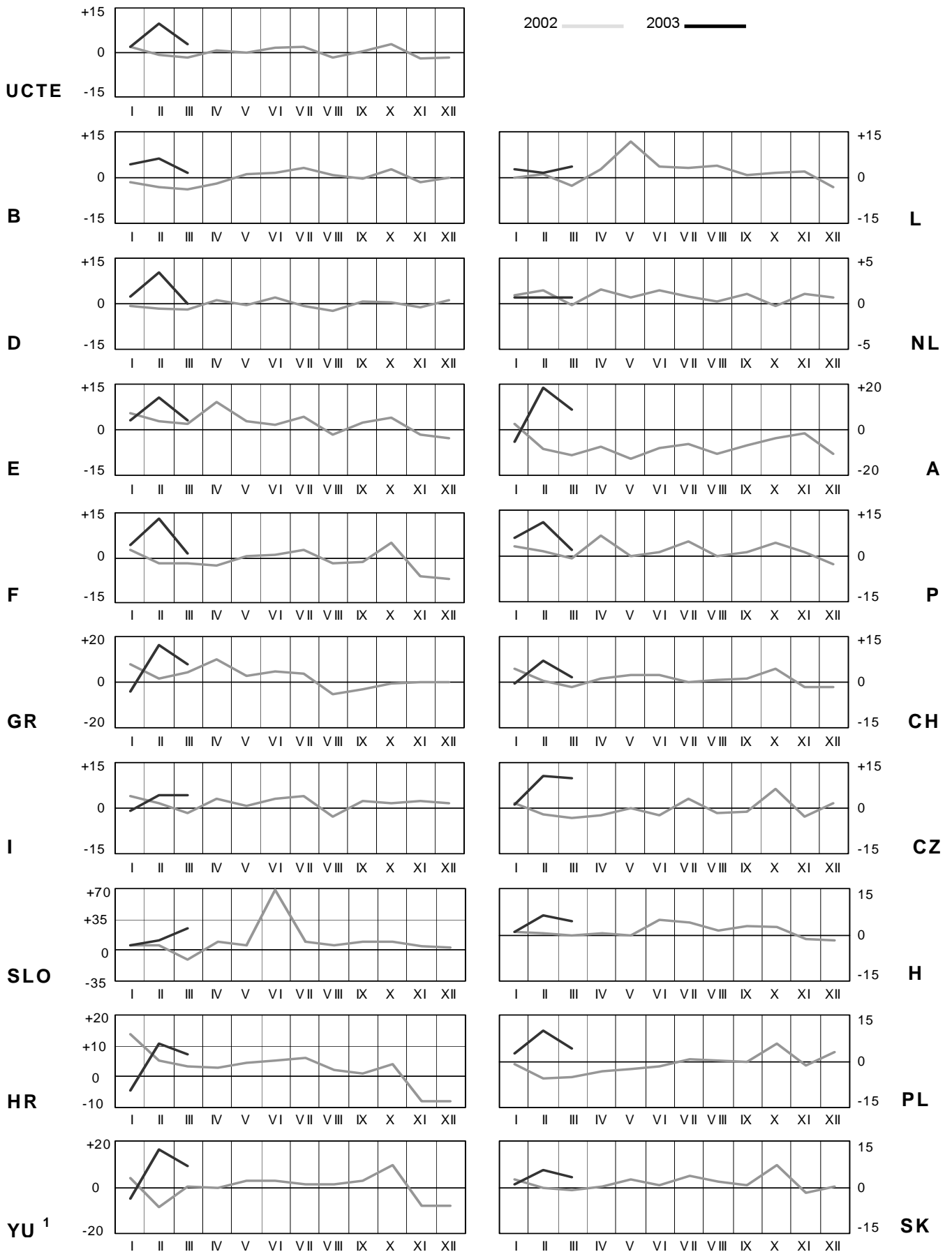
# 3

## Monthly consumption

March 2003



<sup>1</sup> YU = FRY + FYROM (Federal Republic of Yugoslavia and Former Yugoslav Republic of Macedonia)

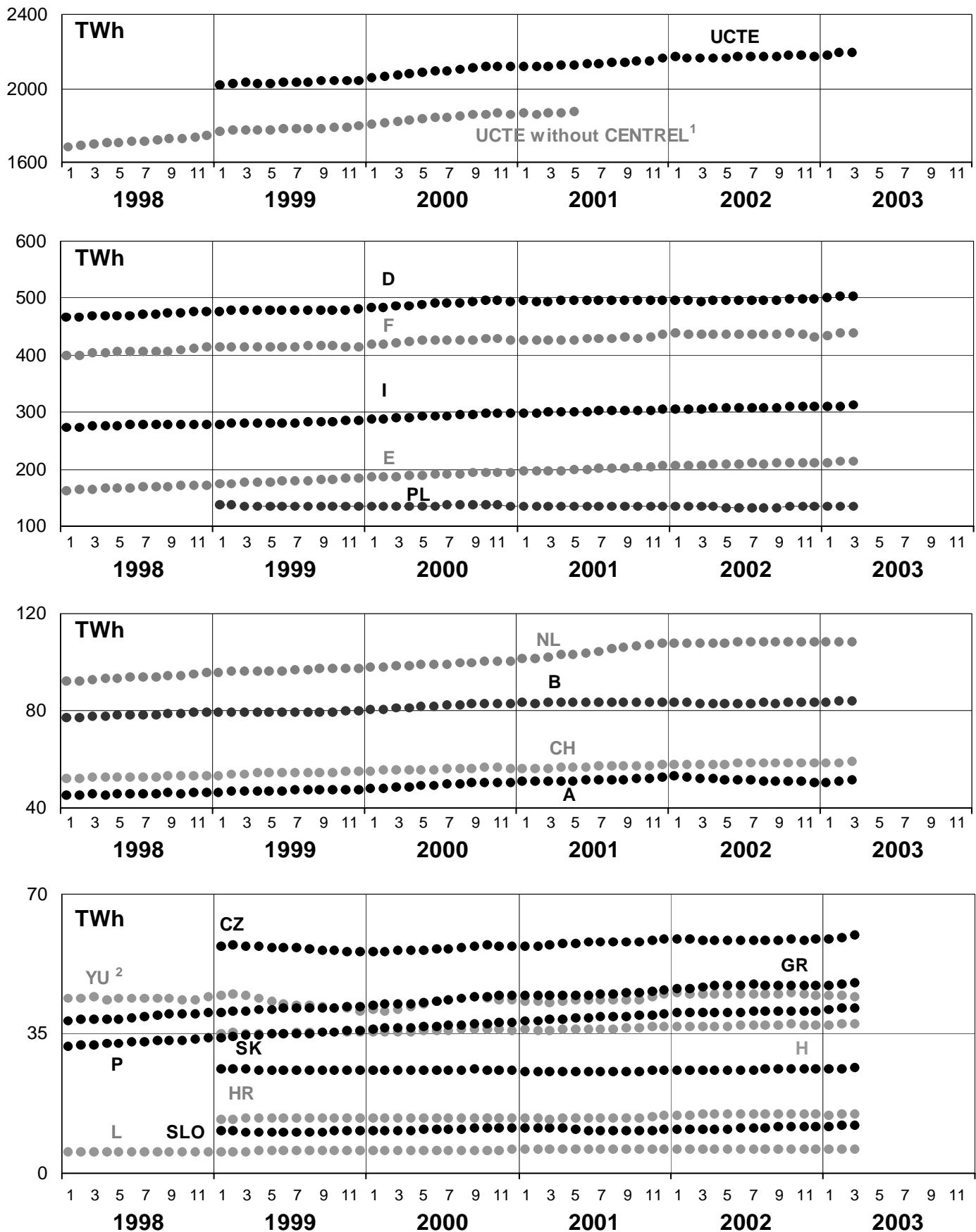


<sup>1</sup>YU = FRY + FYROM (Federal Republic of Yugoslavia and Former Yugoslav Republic of Macedonia)

# 5

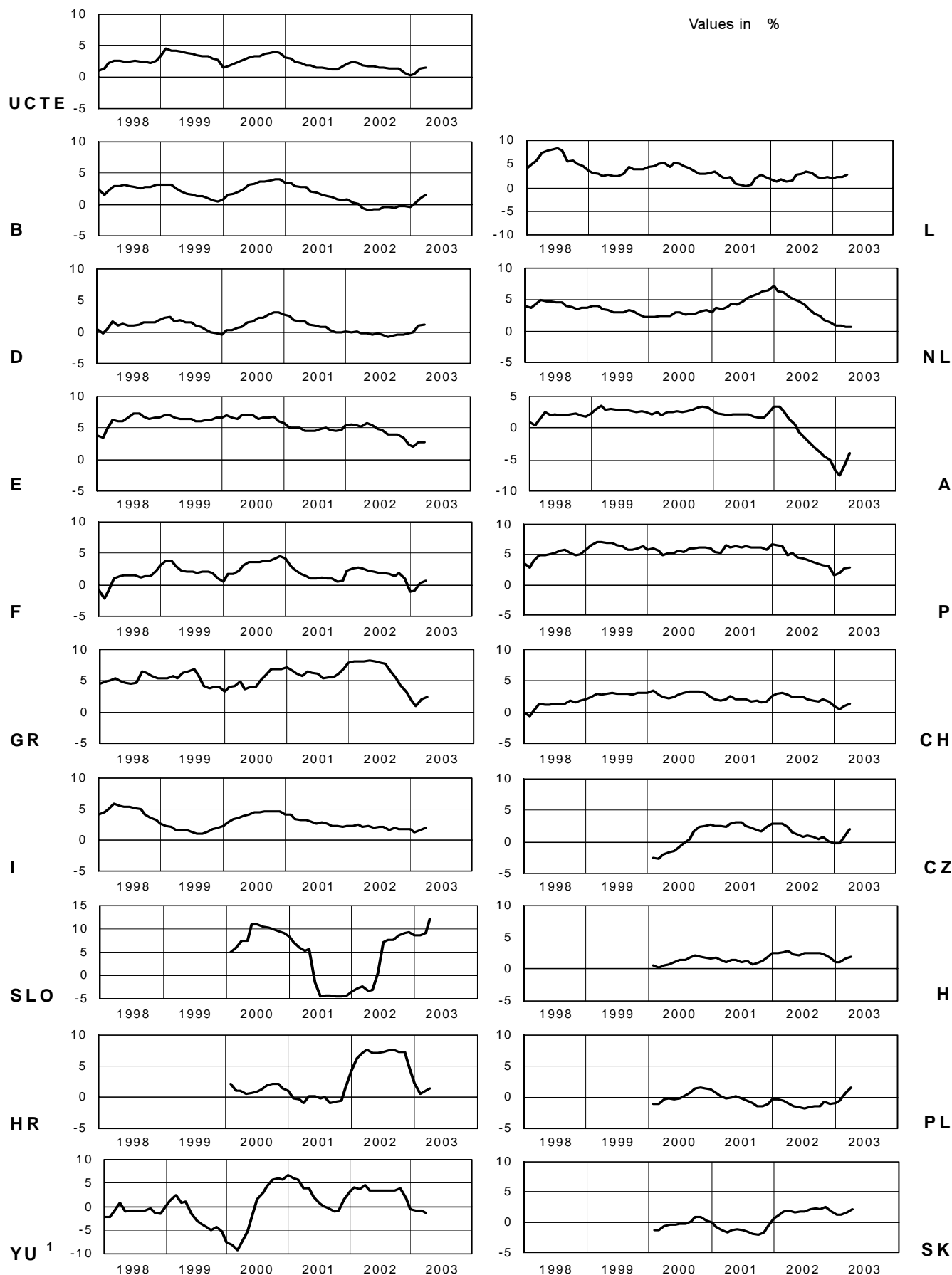
## Consumption of last 12 months

March 2003



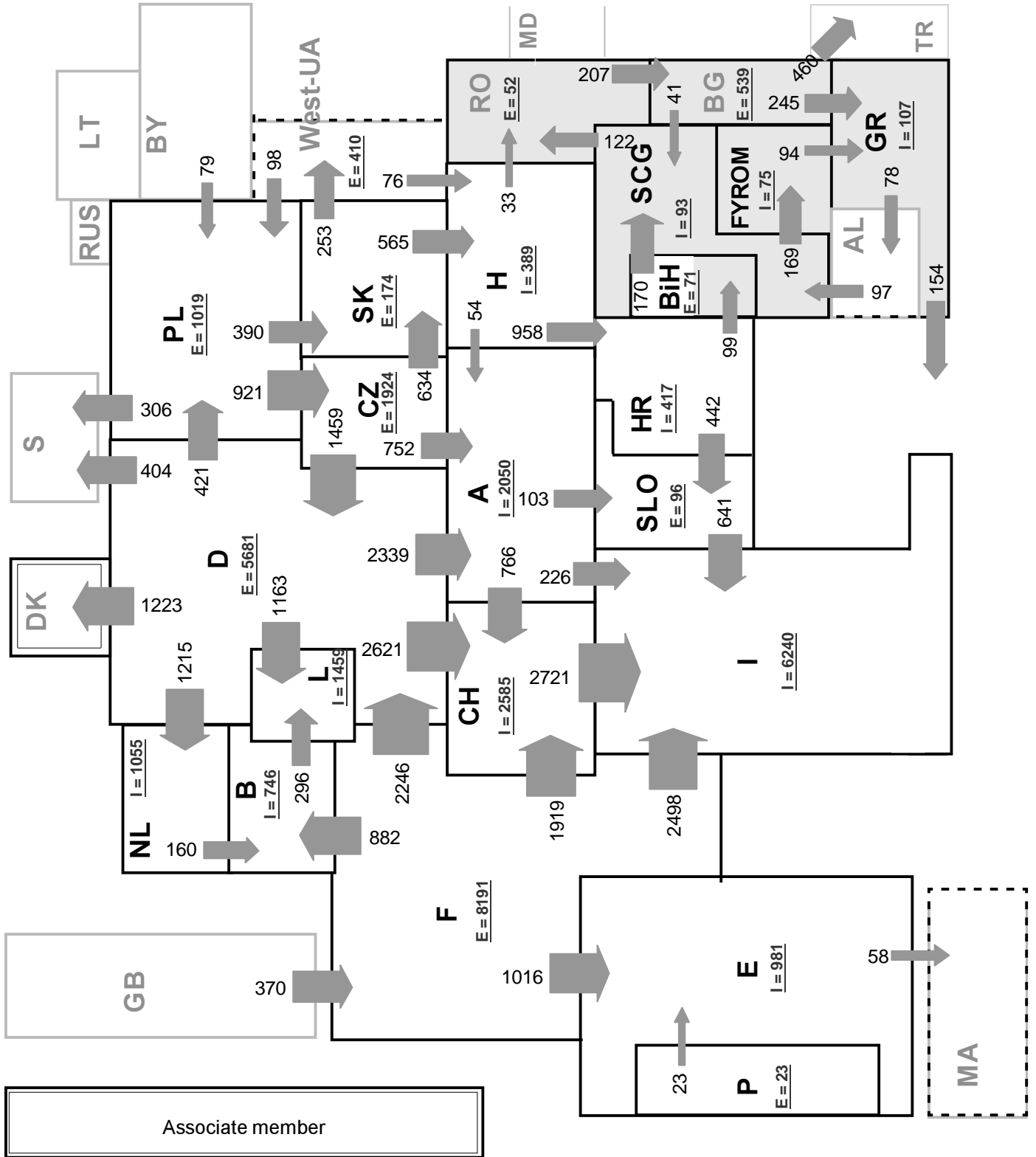
<sup>1</sup> CENTREL countries CZ, H, PL, SK member of UCTE from May 2001

<sup>2</sup> YU = FRY + FYROM (Federal Republic of Yugoslavia and former Yugoslav Republic of Macedonia)



<sup>1</sup> YU = FRY + FYROM (Federal Republic of Yugoslavia and Former Yugoslav Republic of Macedonia)





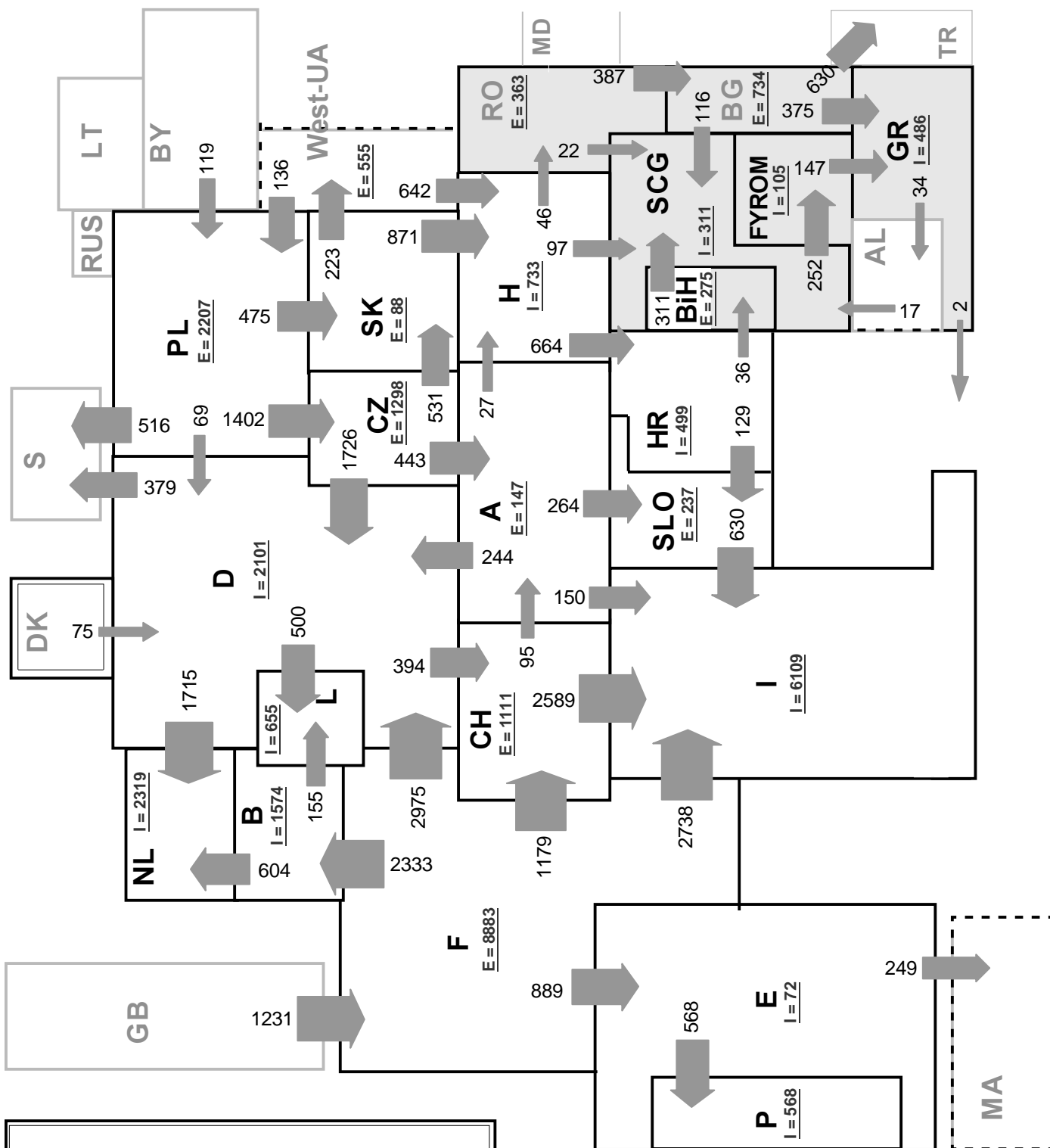
**Sum of load flows in MW:**

UCTE = 29221      Total = 33212

\* Central European Time (CET)

I = Import balance

E = Export balance



Associate member

Synchronous operation with 1st resp. 2nd UCTE region

2nd synchronous UCTE region

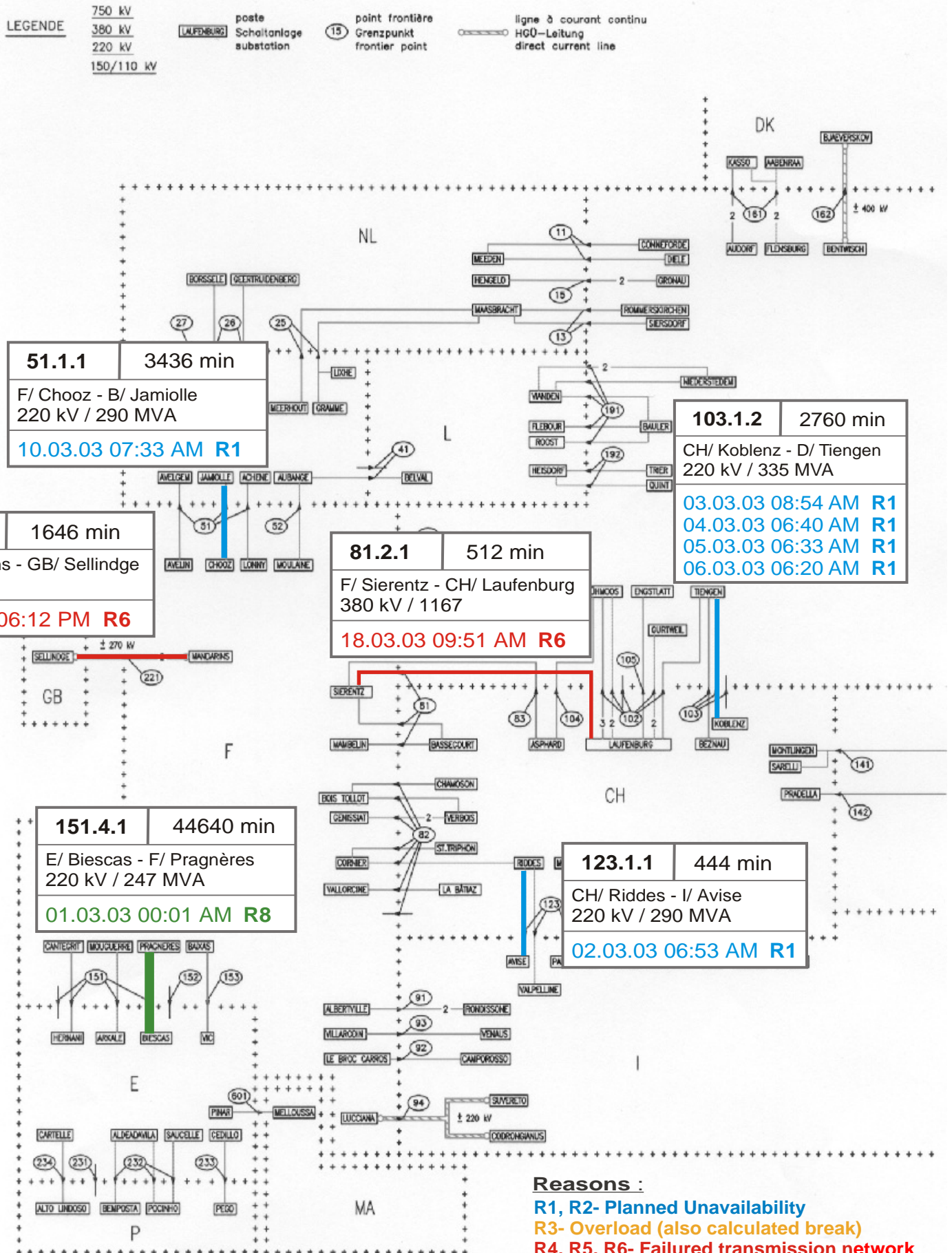
**Sum of load flows in MW:**

UCTE = 26150      Total = 30401

\* Central European Time (CET)

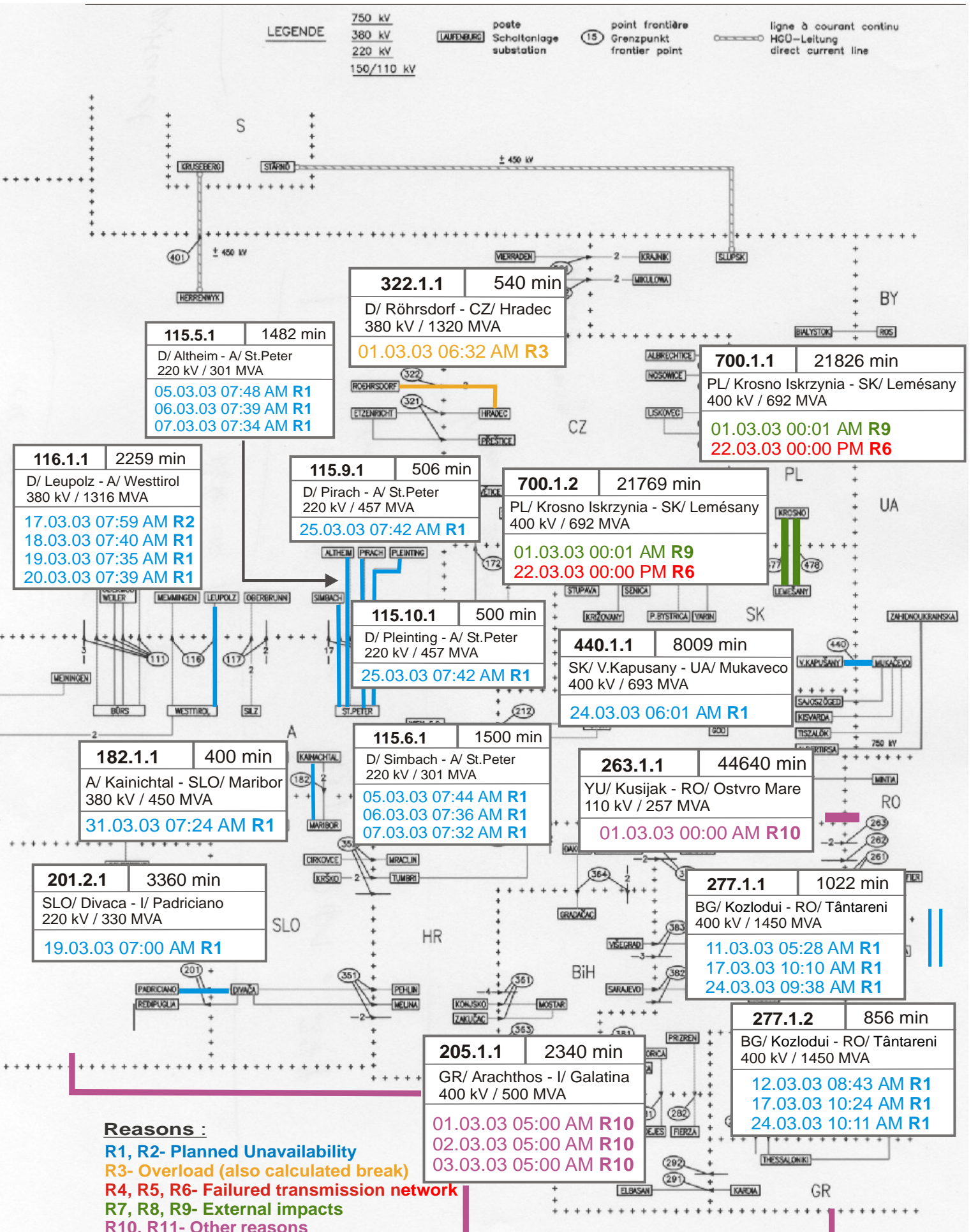
I = Import balance

E = Export balance



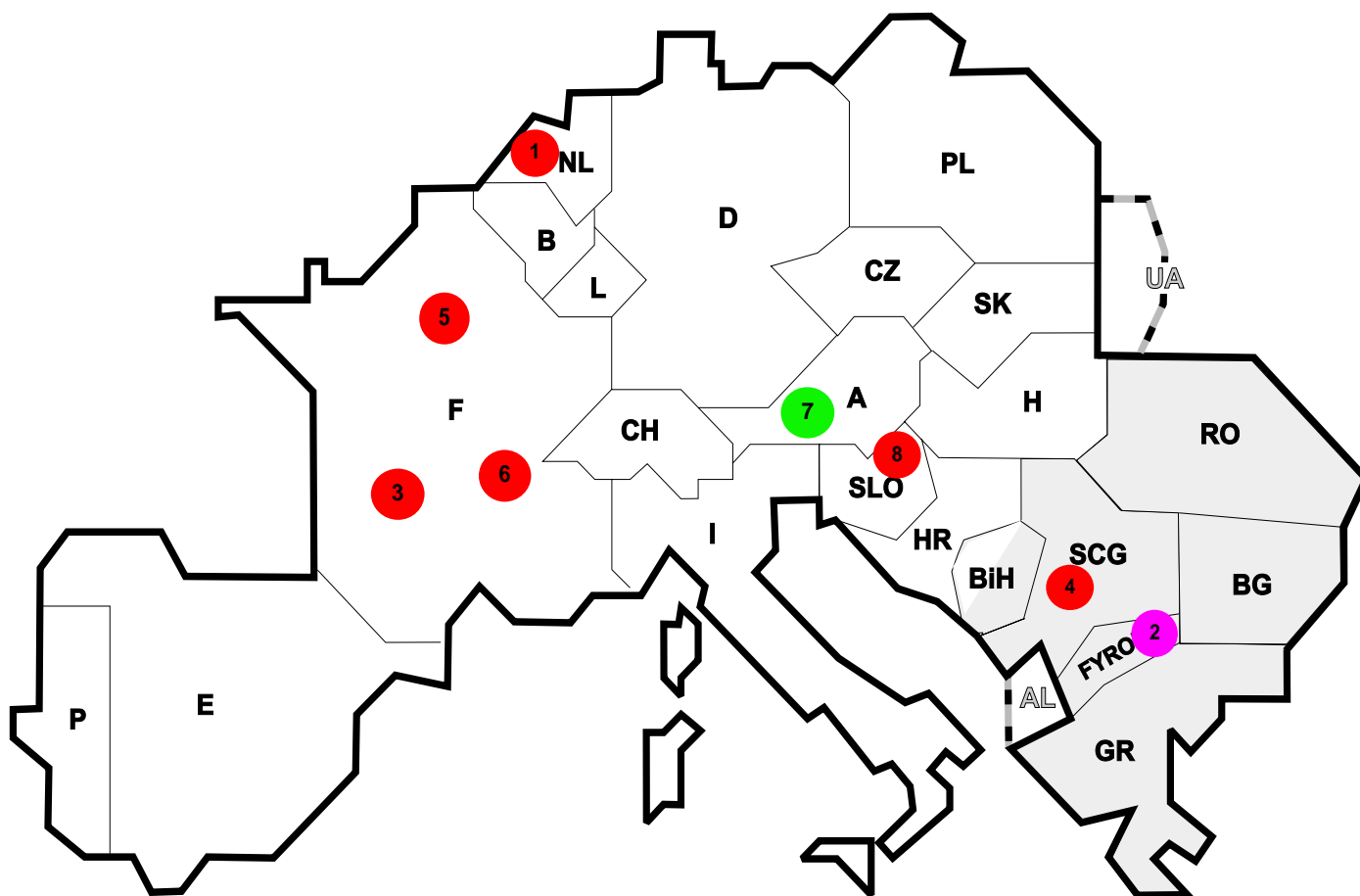
**Reasons :**

- R1, R2- Planned Unavailability
- R3- Overload (also calculated break)
- R4, R5, R6- Failed transmission network
- R7, R8, R9- External impacts
- R10, R11- Other reasons



**Reasons :**

- R1, R2- Planned Unavailability
- R3- Overload (also calculated break)
- R4, R5, R6- Failed transmission network
- R7, R8, R9- External impacts
- R10, R11- Other reasons



Reasons:

- R3**      **Overload**
- R4, R5, R6**    **Failure in the transmission network**
- R7, R8, R9**    **External impacts (animals...)**
- R10, R11**    **Other reasons**

Nbr	Country	Substation	Reason	Energie not supplied [ MWh ]	Total loss of power [ MW ]	Restoration time [ min ]	Equivalent tim of interruption
1	NL	Weiw erd	R5	750	55	820	0,27
2	FYROM	Bitola2	R10	200	200	74	55,47
3	F	La Mouche	R4	40	82	31	0,10
4	YU	Krusevac	R4	38	190	12	2,30
5	F	Charenton	R5	7	112	4	0,13
6	F	Jacquard	R4	1	3	13	0,00
7	A	Ybbsfeld	R7	0	0	81	0,00
8	SLO	Maribor	R6	0	300	12	13,04

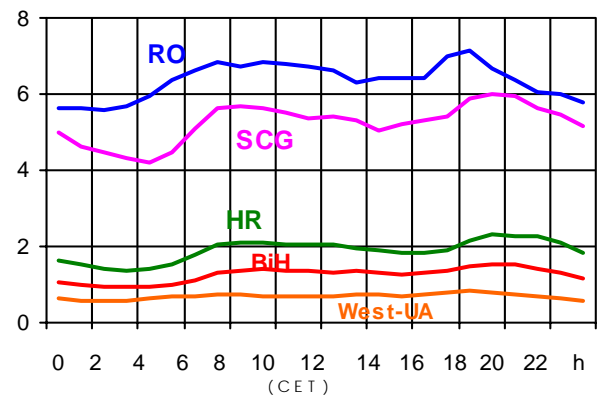
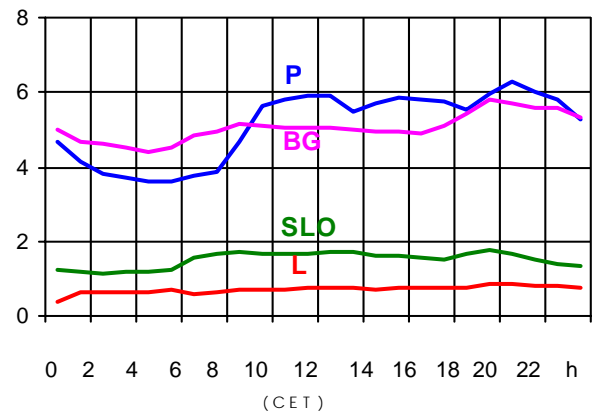
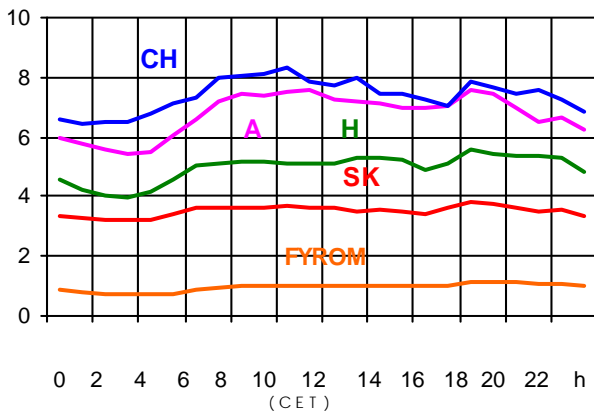
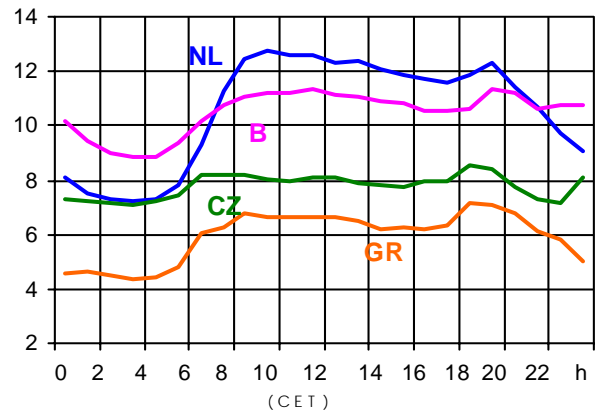
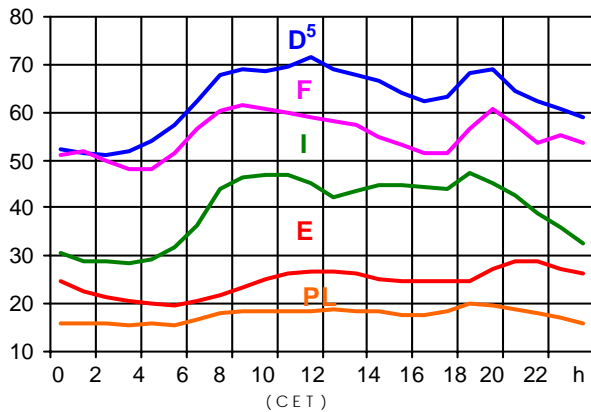
<sup>1</sup> ( year [in min] \* power loss ) / consumption last 12 months

Control area	Prog_exp	Prog_imp	Prog_exp3	Prog_imp3	Prog_exp11	Prog_imp11
B	384277	1309963	459	1699	250	1992
D	2848644	2825638	4471	2418	2817	6002
E	333896	553395	78	1000	209	975
F	8181039	1333461	10070	1874	11748	2908
GR	56340	245185	150	305	0	493
I	45636	4880552	0	6240	0	6109
SLO	440143	403975	595	511	767	511
HR	n.a.	n.a.	n.a.	n.a.	n.a.	n.a.
BiH	n.a.	n.a.	n.a.	n.a.	n.a.	n.a.
FYROM	2860	56969	0	70	0	100
YU	360888	596106	395	491	554	860
NL	613228	596106	1050	2116	911	3252
A	979231	374387	1365	489	733	590
P	254306	369521	919	6	324	0
CH	2610262	3144375	2737	5312	3765	2660
CZ	1859622	617621	2593	602	2523	1167
H	455077	918602	705	1055	688	1409
PL	991834	125935	1156	200	2312	140
SK	574894	318593	735	522	919	766
RO	332000	28000	330	30	570	50
BG	n.a.	n.a.	n.a.	n.a.	n.a.	n.a.
UA	260139	0	318	0	413	0

- Control areas can differ from national borders ( i.e. German block which includes parts of A, L and DK ).
- Values are calculated on an hourly base ( MWh ).
- This values are not the provisional values entered in the VULCANUS system, but the definitive values after an eventual correction during the actual date.
- Prog\_exp: Sum of all positive values of every hour of every border
- Prog\_imp: Sum of all negative values of every hour of every border
- Prog\_exp3: Sum of all positive values the third Wednesday from 02:00 to 03:00 a.m.
- Prog\_imp3: Sum of all negative values the third Wednesday from 02:00 to 03:00 a.m.
- Prog\_exp11: Sum of all positive values the third Wednesday from 10:00 to 11:00 a.m.
- Prog\_imp11: Sum of all negative values the third Wednesday from 10:00 to 11:00 a.m.

### Consumption hourly load curves<sup>1</sup> on 19.03.03

Values in GW



	Peak load MW	$\Delta$ % <sup>2</sup>	Cons_load_repr <sup>1</sup> %	Parallel load <sup>3</sup> MW
B	11321	-0,7	100	9679
D	71800	1,0	91	76300
E	28924	0,3	94	26339
F <sup>4</sup>	61544	7,9	97	70472
GR <sup>4</sup>	7169	11,8	93	6174
I	47486	6,0	100	40379
SLO	1770	2,9	95	1890
HR	2309	10,4	100	2063
BiH	1542	n.a.	100	1643
FYROM	1131	n.a.	100	929
SCG	6013	n.a.	96	5250
L	866	1,6	99	704
NL	12713	1,3	90	10283
A	7606	-1,4	82	8515
P	6299	11,0	92	5064
CH	8290	-1,5	100	9557
CZ	8564	3,9	100	10059
H	5585	-0,6	100	4346
PL	20028	3,1	100	20274
SK	3833	-0,1	100	3758
<b>UCTE</b>	<b>317372</b>	<b>3,6</b>		<b>326234</b>
DK <sup>6</sup>				2805
RO	7168	n.a.	100	6793
BG	5817	n.a.	100	5782
West-UA	816	n.a.	100	1123

<sup>1</sup> Percentage as referred to total values in %

<sup>2</sup> Variation as compared to corresponding month of the previous year

<sup>3</sup> Including autoproduction

<sup>4</sup> The representativity of data referring to the whole country, including the systems of the Greek islands, is 93%. The representativity of data to the interconnected system is 99%.

<sup>5</sup> Values estimated on the basis of former data from the German Federal Office for Statistics

<sup>6</sup> Denmark (Jutland)



## Contact

Boulevard Saint-Michel, 15  
B-1040 Brussels - Belgium  
Tel +3227416940 - Fax +3227416949

[info@ucte.org](mailto:info@ucte.org)  
[www.ucte.org](http://www.ucte.org)