



February 2009

Monthly provisional values

union for the co-ordination of transmission of electricity



Table of contents		Page
1	Electricity supply situation of the countries	2
2	Physical energy flows	3
3	Monthly consumption	4
4	Monthly consumption variation	6
5	Consumption of the last 12 months	8
6	Variation of the last 12 months' consumption	10
7	Load flows (night)	12
8	Load flows (day)	13
9	Unavailability of international tie lines (major events)	14
10	Network reliability (major events)	16
11	Scheduled exchanges	17
12	Load on the 3 rd Wednesday	18

General remarks and abbreviations used in the tables

- All values of production and consumption in chapter 1, 3&4, 5&6 and 12 are calculated to represent 100% of the national values.
- DK_W Denmark West represents the Western part of Denmark synchronously interconnected with UCTE (Jutland and Funen).
- UA_W Ukraine West represents the so-called Burshtyn Island synchronously interconnected with UCTE.
- CET Central European Time
- The Bulgarian load values on the 3rd Wednesday are gross values

Countries	Net production in GWh							Exchange balance in GWh	Pump in GWh	Consumption in GWh			
	Therm. nuclear	Fossil fuels	Hydro prod	Other renew.	Of which wind	Non identifiable	Total			monthly	var. [%]	last 12 months	var. [%]
AT	0	2329	1920	0	0	684	4933	1012	308	5637	-4,1	68038	0,2
BA	0	596	796	0	0	0	1392	-457	0	935	-6,3	11519	1,5
BE ²	3921	2466	148	285	46	0	6820 ¹	370	135	7055	-11,0	88251	-2,7
BG	1297	1973	275	0	0	0	3545	-392	77	3076	-6,6	33926	-0,7
CH	2184	164	2226	98	2	0	4672 ¹	1076	137	5611	0,0	64670	1,7
CZ	2179	4477	194	31	29	0	6881 ¹	-1252	61	5568	-5,3	64760	-0,8
DE	11152	30777	1316	5245	3203	0	48490 ¹	-1767	461	46262	-7,2	552269	-1,0
DK_W	0	1837	2	466	316	0	2305 ¹	-527	0	1778	-5,6	21553	-1,2
ES	4316	11271	3736	3558	3105	44	22925	-475	385	22065	-6,1	271387	0,3
FR	37048	6852	5642	840	491	0	50382 ¹	-3285	646	46451	2,6	500466	3,2
GR	0	3270	507	204	182	0	3981 ¹	309	20	4270	-5,9	55777	-0,9
HR	0	350	799	5	5	0	1154 ¹	378	4	1528	-1,0	17788	0,8
HU	1362	1785	0	0	0	0	3147 ¹	270	0	3417	0,5	40375	-2,6
IT	0	17391	3765	1041	665	0	22197	4122	450	25869	-8,8	332699	-2,6
LU	0	229	81	12	5	0	322	275	95	502	-14,9	6529	-4,5
ME	0	120	356	0	0	0	476	-113	0	363	-14,6	4449	-5,3
MK	0	483	71	0	0	0	554	188	0	742	-6,2	8514	-2,5
NL	0	8038	0	631	319	0	8669 ¹	850	0	9519	-4,4	119658	1,7
PL ³	0	11540	224	90	74	0	11854 ¹	-288	40	11526	-5,8	141696	-1,0
PT	0	1961	1591	580	457	0	4132 ¹	137	44	4225	-1,8	52269	1,4
RO	879	2558	1217	0	n.a.	0	4654 ¹	-377	10	4267	-11,1	54240	-1,3
RS	0	2541	1080	0	0	0	3621	-92	48	3481	0,7	39410	1,7
SI	467	449	251	0	0	0	1167 ¹	-226	0	941	-12,1	12467	-7,1
SK	1123	606	267	27	0	0	2023 ¹	259	20	2262	-6,5	27309	-1,7
UCTE	65928	114063	26464	13113	8899	728	220296 ¹	-5	2941	217350	-4,7	2590019	-0,1
UA_W	0	647	9	0	0	0	656	-307	0	349	-14,0	4083	-5,7

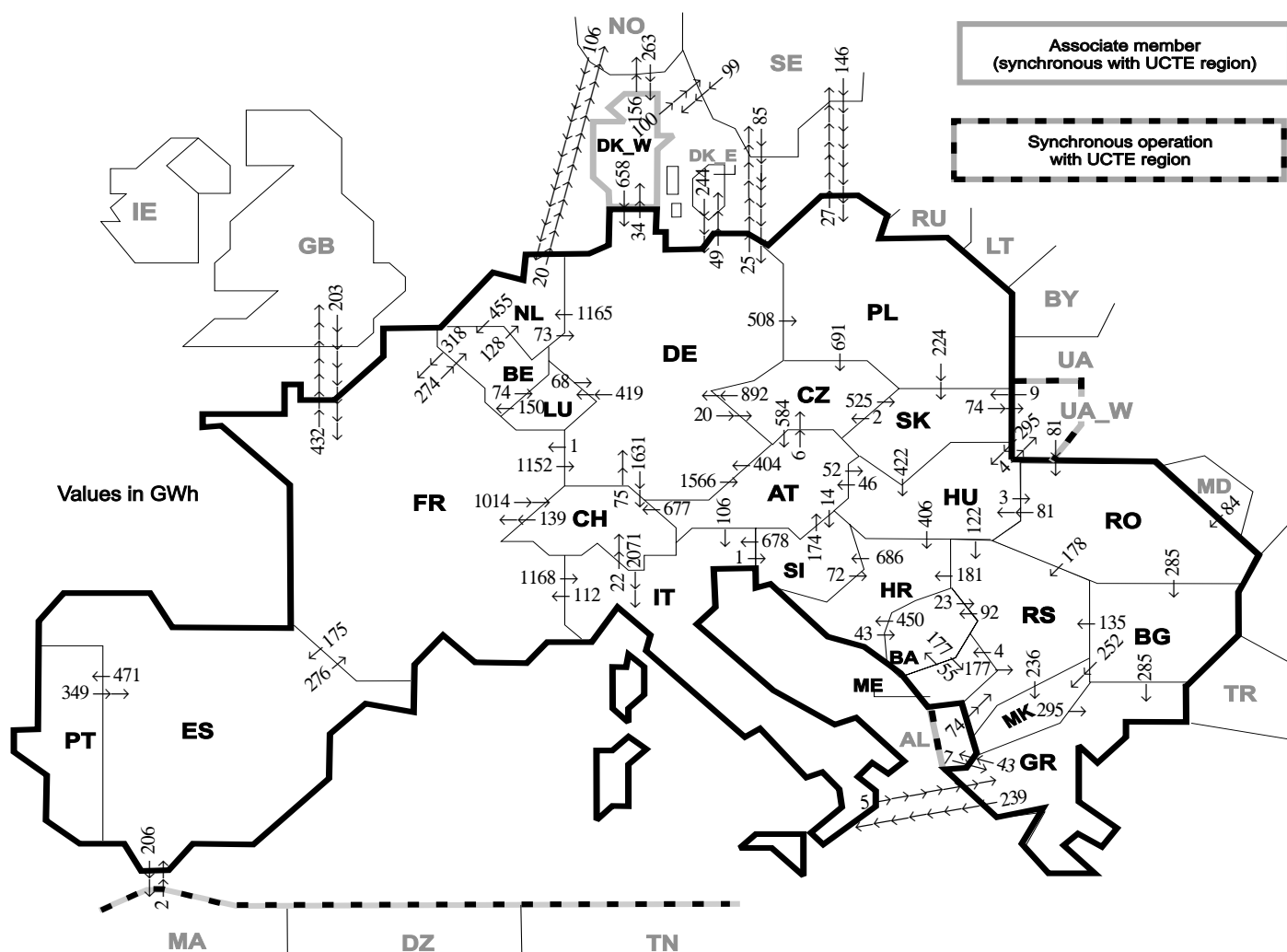
¹ Including deliveries from industry

² The reported figures are best estimates based on actual measurements and extrapolations

³ Operational data

All representativities of the national production and consumption values used to calculate values at a representativity of 100% as stated in the table above:

Countries	AT	BA	BE	BG	CH	CZ	DE	DK_W	ES	FR	GR	HR	HU	IT	LU	ME	MK	NL	PL	PT	RO	RS	SI	SK	UA_W
Production																									
Therm.nuclear	100	100	100	100	100	100	100	100	100	100	100	100	100	100	100	100	100	100	100	100	100	100	100	100	100
Fossil fuels	100	100	100	100	100	100	100	100	97	100	100	100	100	100	100	100	100	100	100	94	100	100	100	100	100
Hydro prod	100	100	100	100	100	100	100	100	100	100	100	100	100	100	100	100	100	100	100	100	100	100	100	100	100
Other renew.	100	100	100	100	100	100	100	100	95	100	100	100	100	100	100	100	100	100	100	100	100	100	100	100	100
Non identifiable	100	100	100	100	100	100	100	100	100	100	100	100	100	100	100	100	100	100	100	100	100	100	100	100	100
Consumption	100	100	100	100	100	100	100	100	98	100	100	100	100	100	100	100	100	100	100	97	100	100	100	100	100

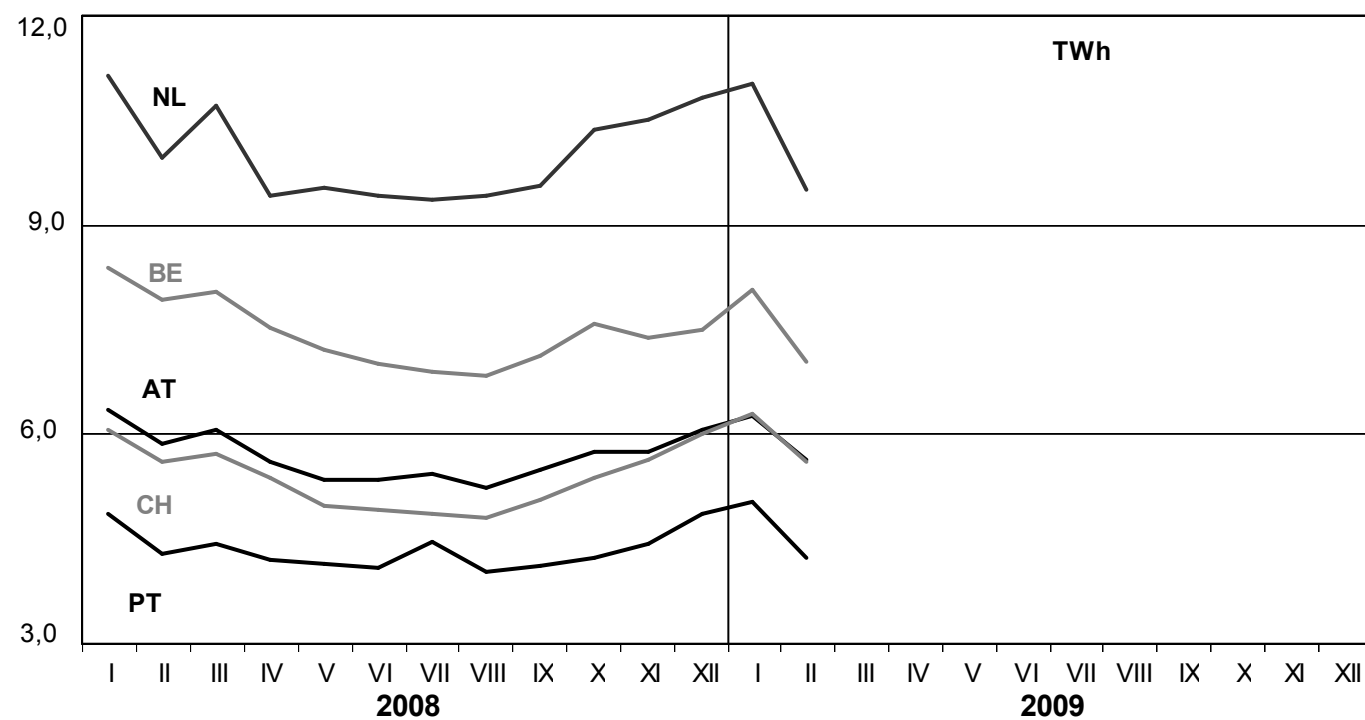
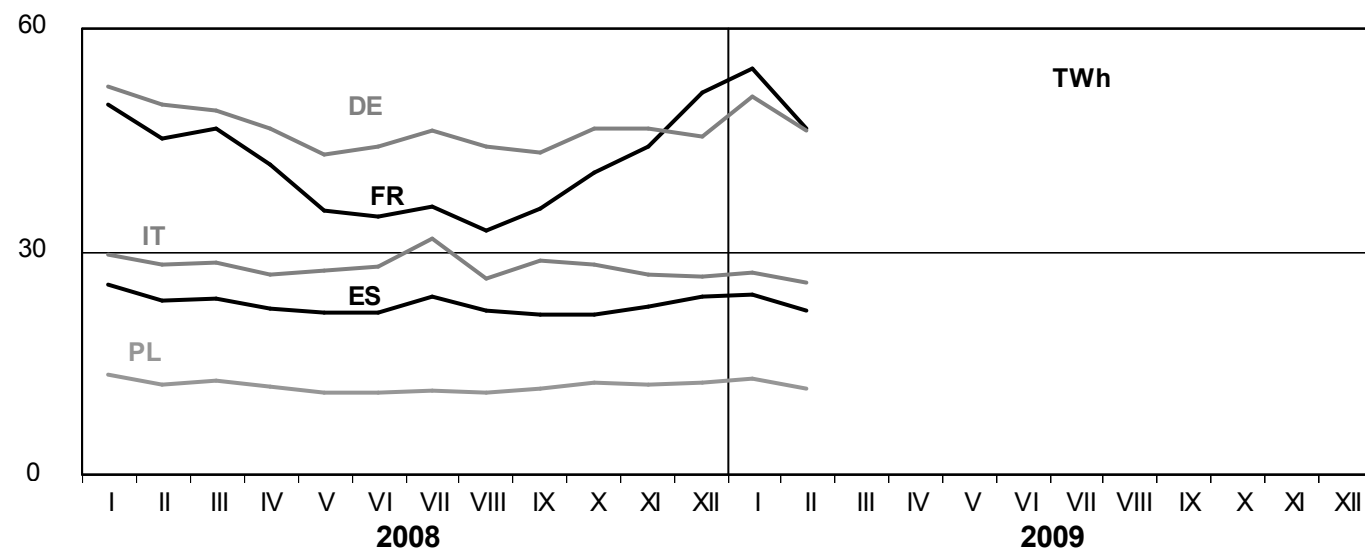
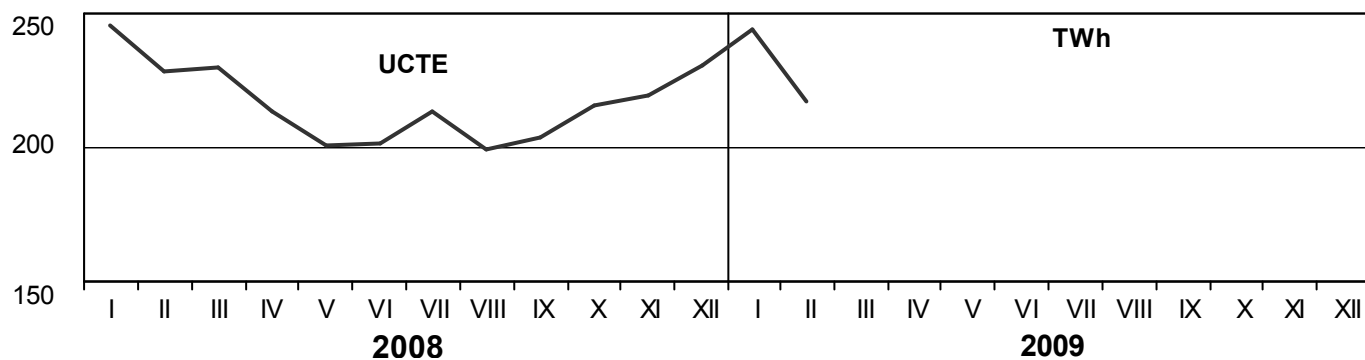


Exporting countries	AT	BA	BE	BG	CH	CZ	DE	DK_W	ES	FR	GR	HR	HU	IT	LU	ME	MK	NL	PL	PT	RO	RS	SI	SK	UA_W	Other III ¹	Sum export
AT	-	-	-	-	677	6	404	-	-	-	-	-	52	106	-	-	-	-	-	-	-	14	-	-	-	1259	
BA	-	-	-	-	-	-	-	-	-	-	-	450	-	-	-	177	-	-	-	-	-	23	-	-	-	650	
BE	-	-	-	-	-	-	-	-	318	-	-	-	-	74	-	-	128	-	-	-	-	-	-	-	-	520	
BG	-	-	-	-	-	-	-	-	-	285	-	-	-	-	-	-	252	-	-	-	0	135	-	-	-	672	
CH	0	-	-	-	-	-	75	-	139	-	-	-	-	2071	-	-	-	-	-	-	-	-	-	-	-	2285	
CZ	584	-	-	-	-	-	892	-	-	-	-	-	-	-	-	-	-	0	-	-	-	-	-	525	-	2001	
DE	1566	-	-	-	1631	20	-	34	1	-	-	-	-	419	-	-	1165	508	-	-	-	-	-	-	74	5418	
DK_W	-	-	-	-	-	-	658	-	-	-	-	-	-	-	-	-	-	-	-	-	-	-	-	-	256	914	
ES	-	-	-	-	-	-	-	-	276	-	-	-	-	-	-	-	-	-	-	471	-	-	-	-	-	206	953
FR	-	-	274	-	1014	-	1152	-	175	-	-	-	-	1168	-	-	-	-	-	-	-	-	-	-	-	432	4215
GR	-	-	-	0	-	-	-	-	-	-	-	-	-	239	-	-	-	-	-	-	-	-	-	-	-	43	282
HR	-	43	-	-	-	-	-	-	-	-	-	0	-	-	-	-	-	-	-	-	-	0	686	-	-	729	
HU	46	-	-	-	-	-	-	-	-	-	-	406	-	-	-	-	-	-	-	-	3	122	-	0	4	581	
IT	0	-	-	-	22	-	-	-	112	5	-	-	-	-	-	-	-	-	-	-	-	-	1	-	-	140	
LU	-	-	150	-	-	-	68	-	-	-	-	-	-	-	-	-	-	-	-	-	-	-	-	-	-	218	
ME	-	55	-	-	-	-	-	-	-	-	-	-	-	-	-	-	-	-	-	-	-	-	177	-	n.a.	232	
MK	-	-	-	0	-	-	-	-	-	-	295	-	-	-	-	-	-	-	-	-	-	-	0	-	-	295	
NL	-	-	455	-	-	-	73	-	-	-	-	-	-	-	-	-	-	-	-	-	-	-	-	-	20	548	
PL	-	-	-	-	691	0	-	-	-	-	-	-	-	-	-	-	-	-	-	-	-	-	224	-	27	942	
PT	-	-	-	-	-	-	-	-	349	-	-	-	-	-	-	-	-	-	-	-	-	-	-	-	-	349	
RO	-	-	-	285	-	-	-	-	-	-	-	81	-	-	-	-	-	-	-	-	-	-	-	0	0	544	
RS	-	92	-	0	-	-	-	-	-	-	181	0	-	-	-	4	236	-	-	-	0	-	-	-	-	0	513
SI	174	-	-	-	-	-	-	-	-	-	72	-	678	-	-	-	-	-	-	-	-	-	-	-	-	924	
SK	-	-	-	-	-	2	-	-	-	-	-	422	-	-	-	-	-	0	-	-	-	-	-	74	-	498	
UA_W	-	-	-	-	-	-	-	-	-	-	-	295	-	-	-	-	-	-	-	-	81	-	9	-	-	385	
Other III ¹	-	-	-	0	-	329	362	2	203	7	-	-	-	n.a.	-	106	146	-	84	74	-	-	-	-	-	1313	
Sum imp	2370	190	879	285	3344	719	3651	396	526	1049	592	1109	850	4262	493	181	488	1399	654	471	168	709	701	758	78	1058	27380

Sum of physical energy flows between UCTE countries = 24546GWh Total physical energy flows = 27380GWh

¹ Other III: Albania, Belarus, Denmark East, Great Britain, Morocco, Republic of Moldavia, Norway, Sweden, Republic of Turkey and Ukraine

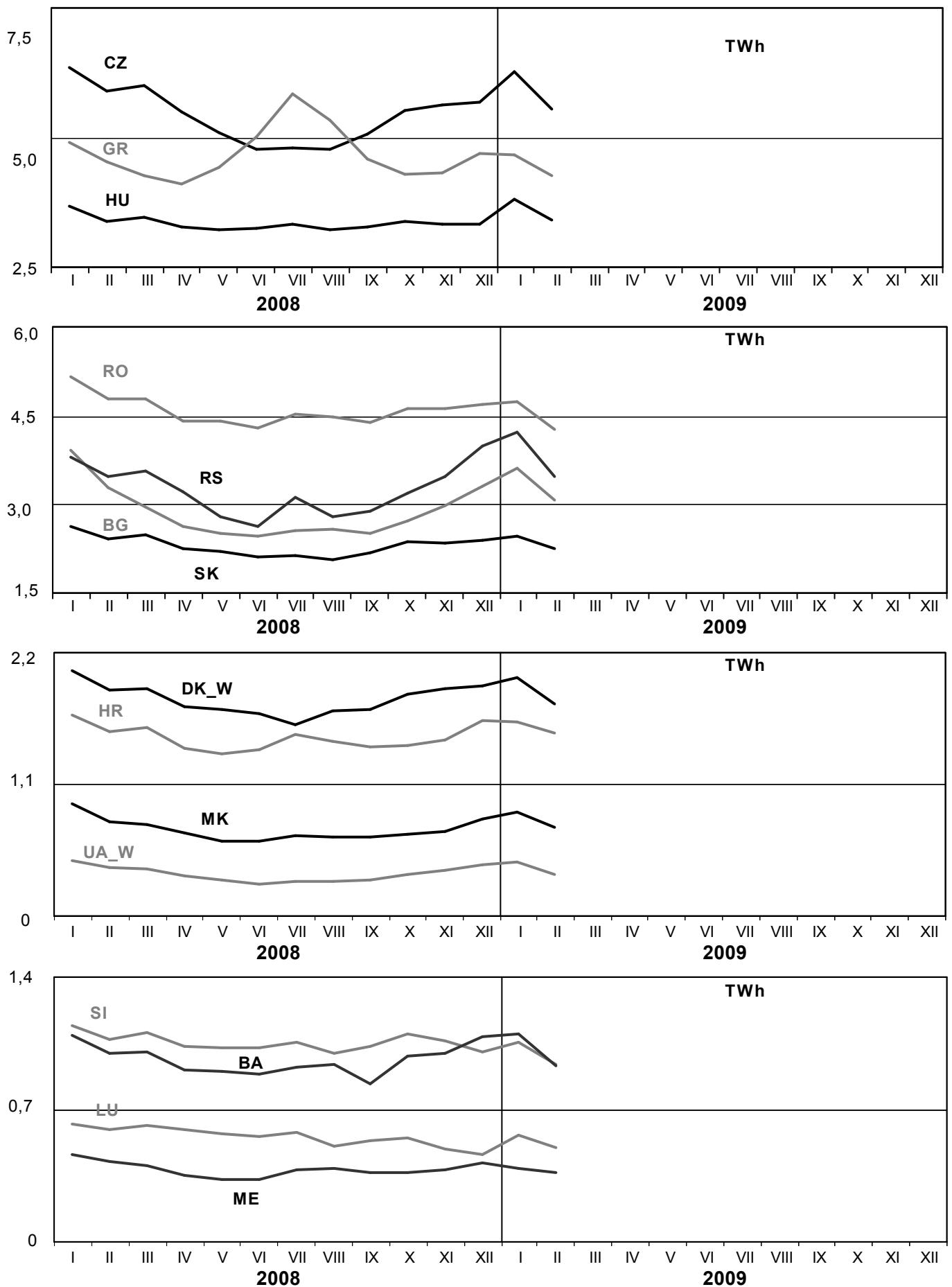
These physical energy flows were measured on the cross-frontier transmission lines (≤ 110 kV) listed in table 9 of the Statistical Yearbook. These values may differ from the official statistics and the exchange balances in chapter 1.



3

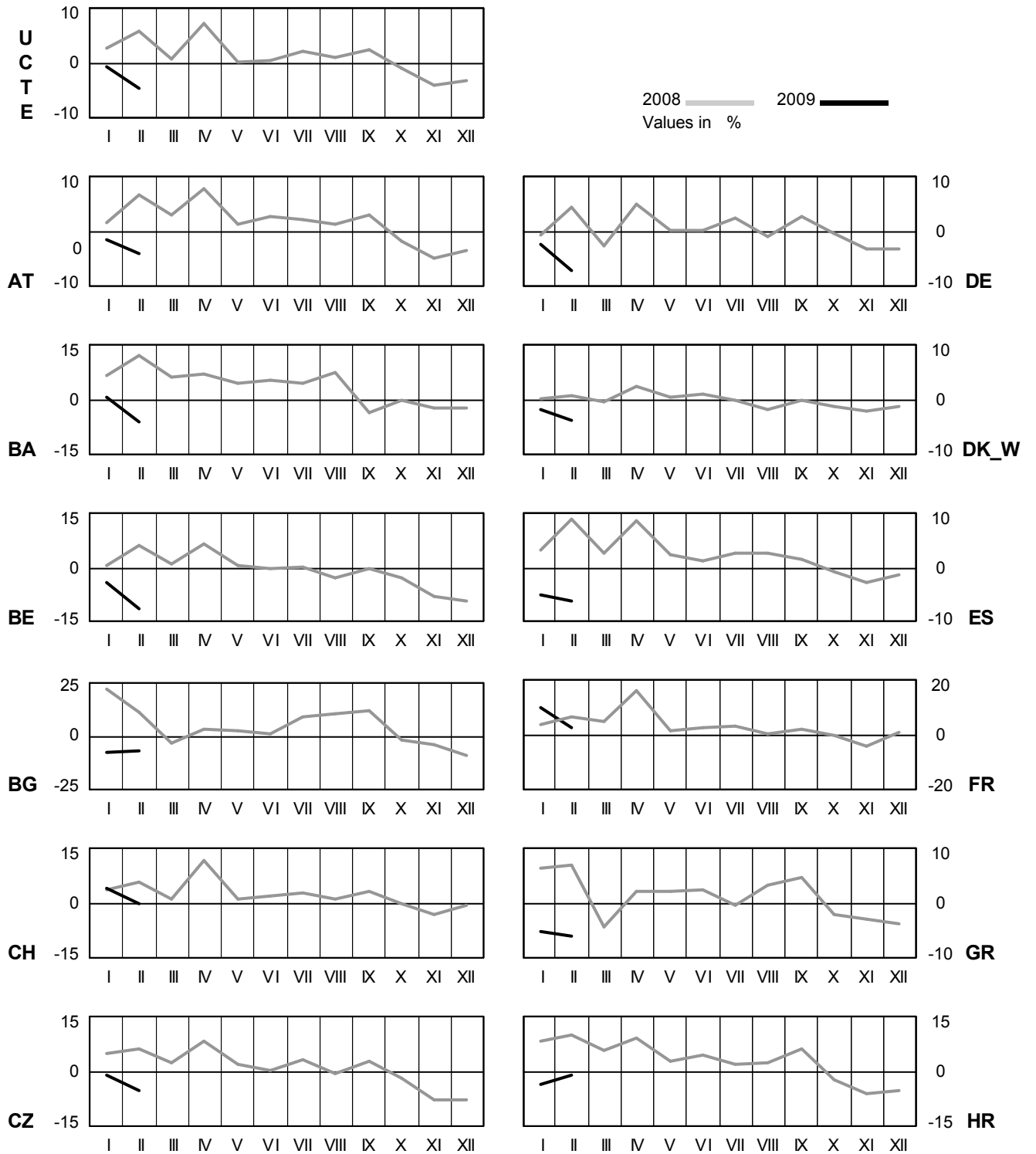
Monthly consumption

February 2009



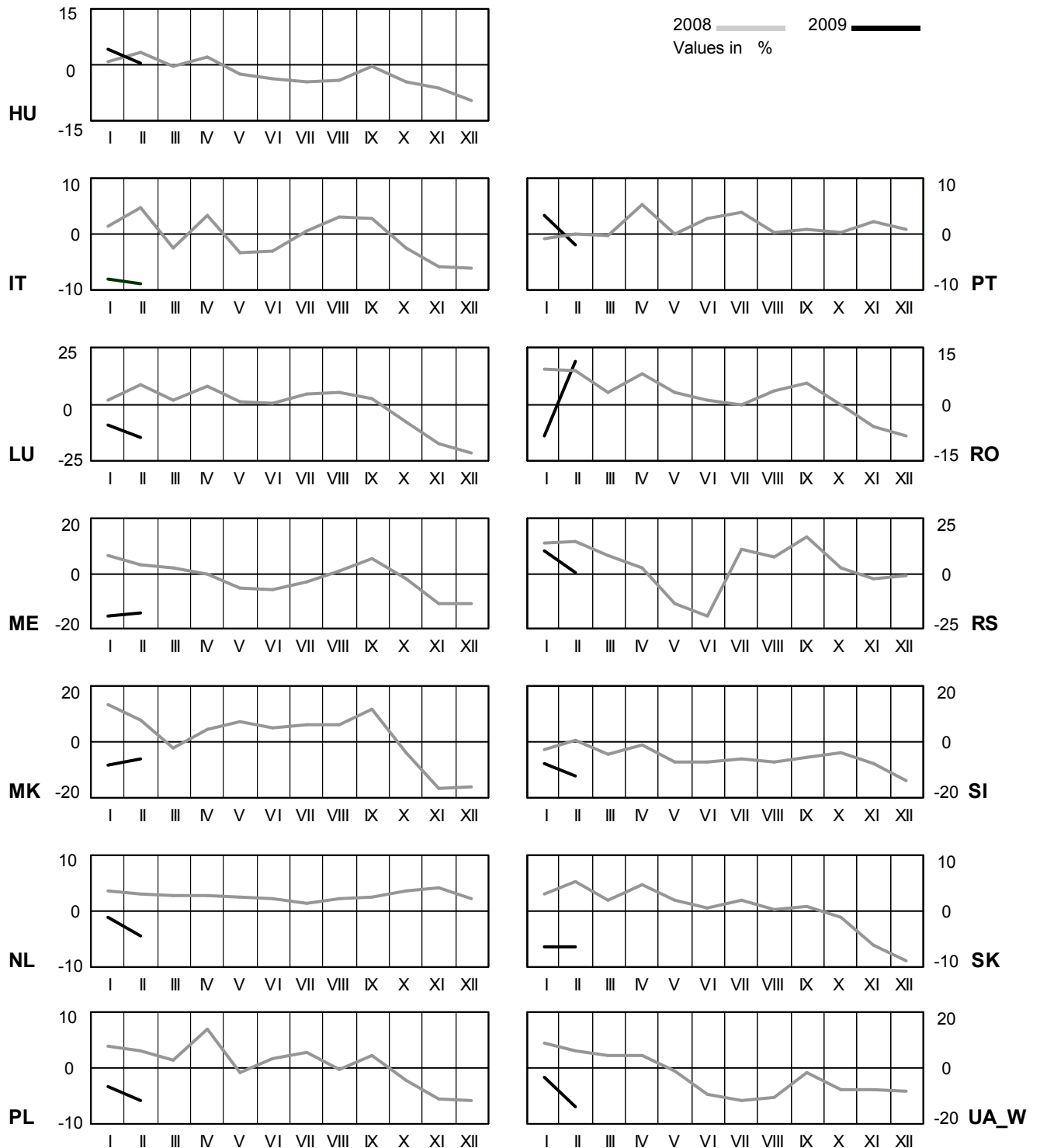
4 Monthly consumption variation

February 2009



4 Monthly consumption variation

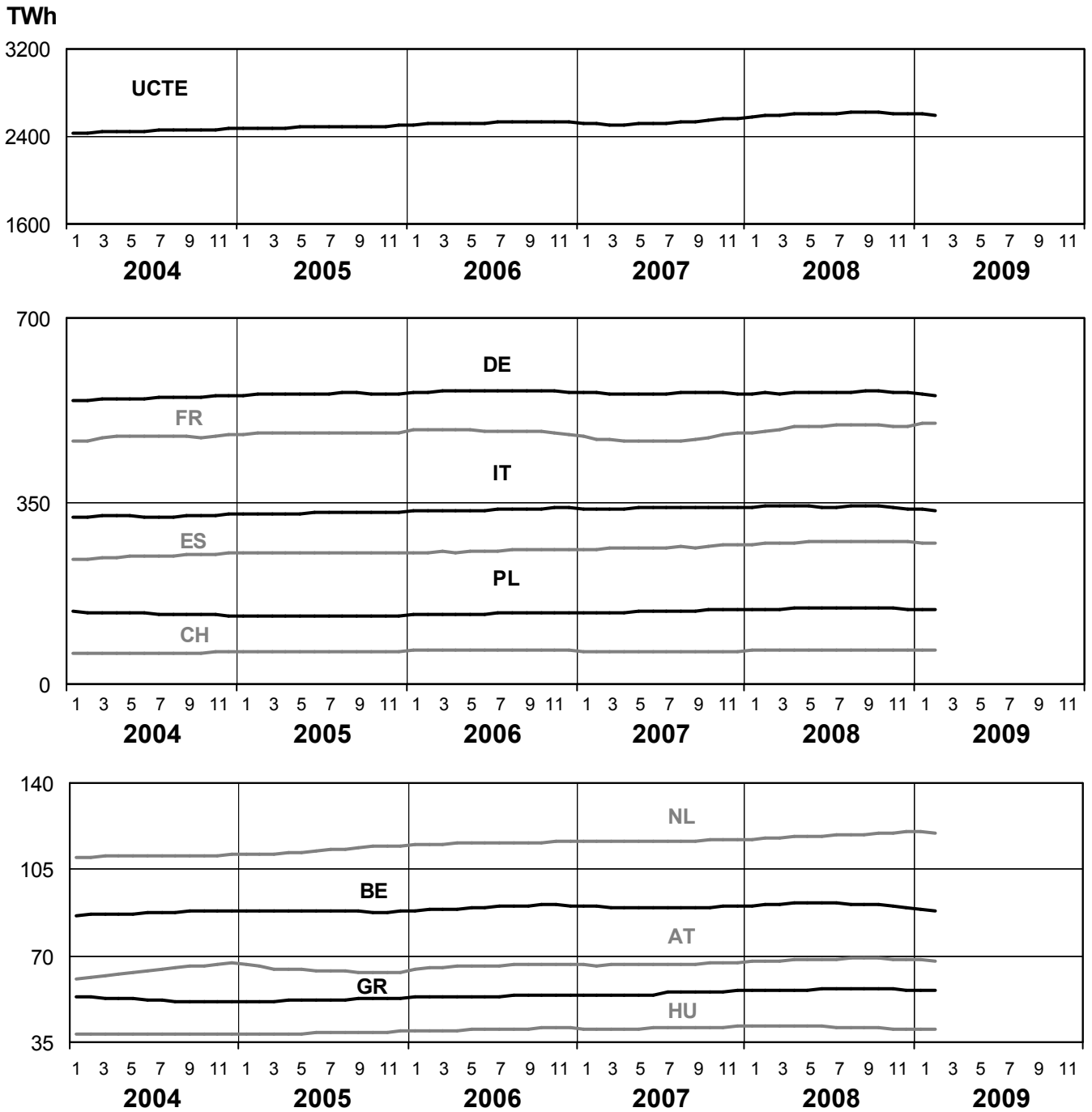
February 2009



5

Consumption of the last 12 months

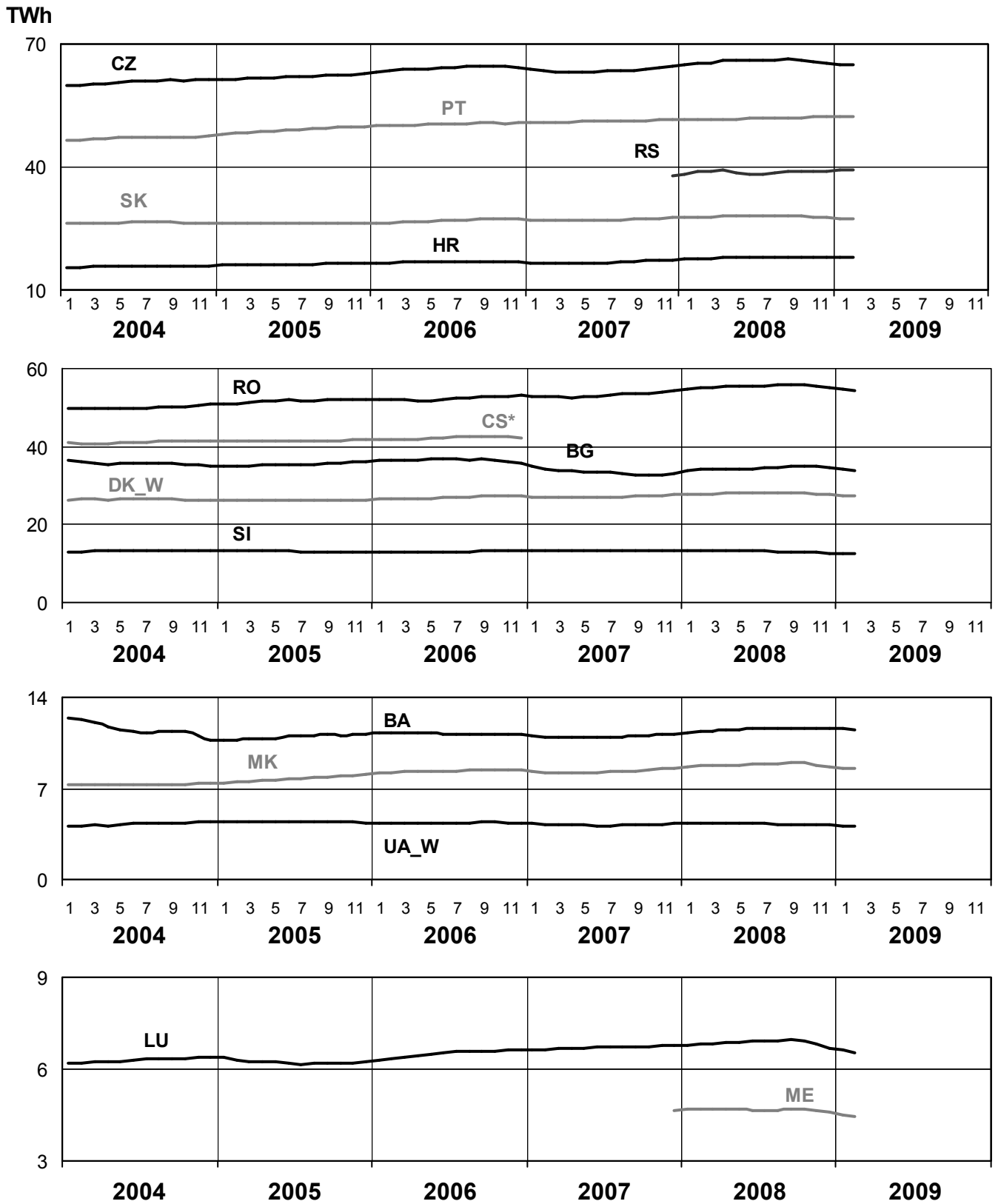
February 2009



5

Consumption of the last 12 months

February 2009

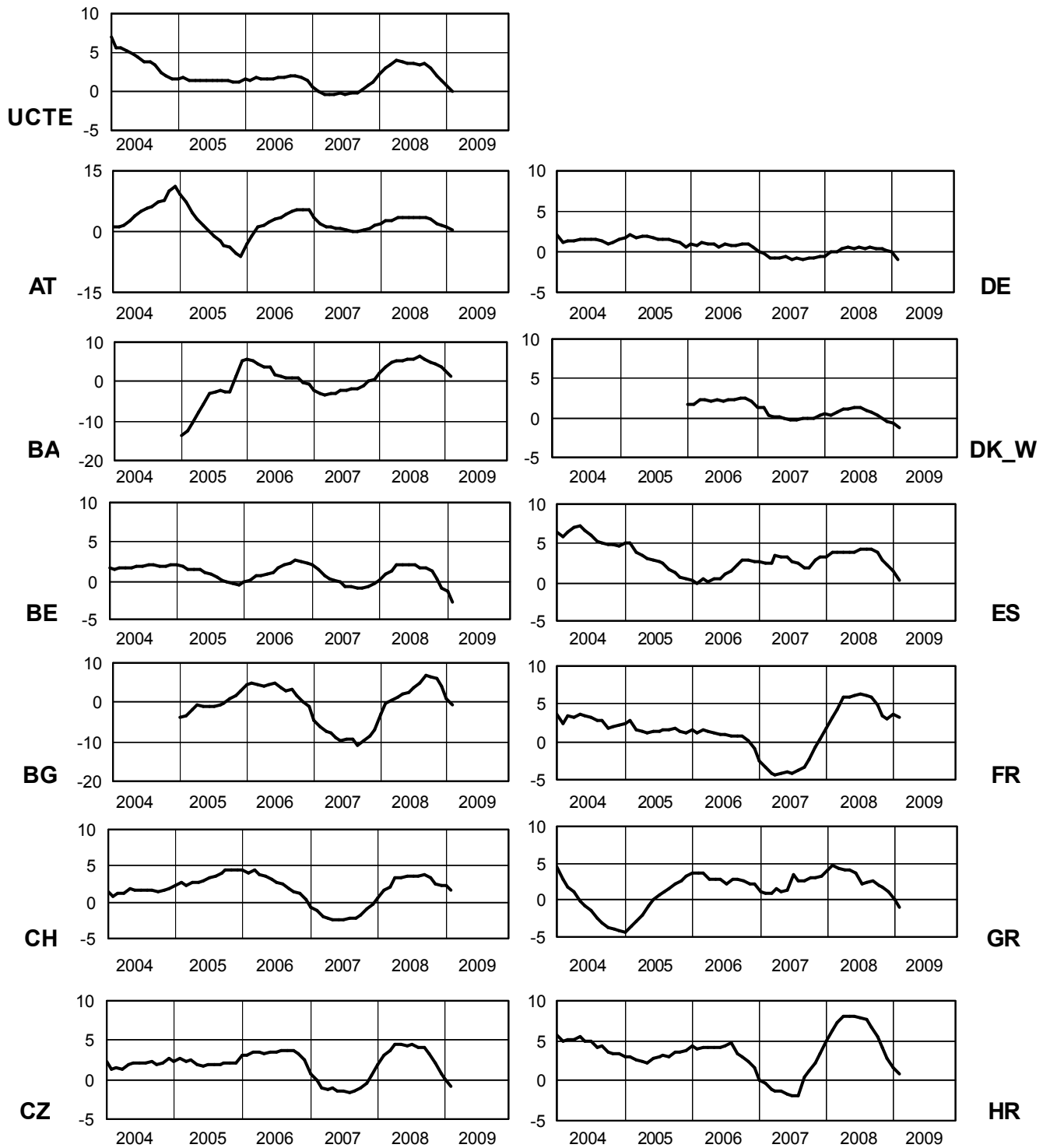


* CS consumption values until December 2006; from 2007 on ME and RS as separate countries

6

Variation of the last 12 months' consumption in %

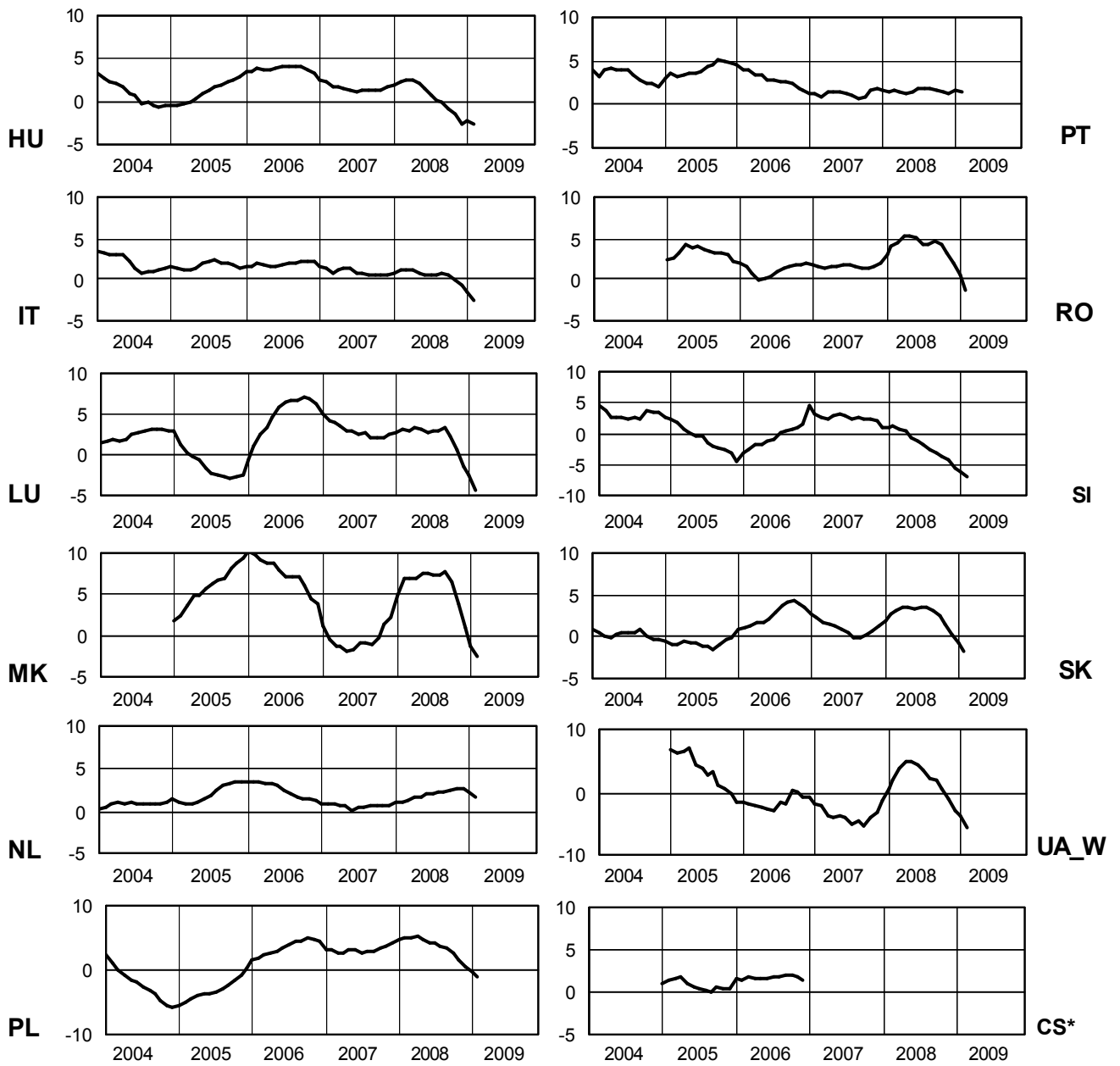
February 2009



6

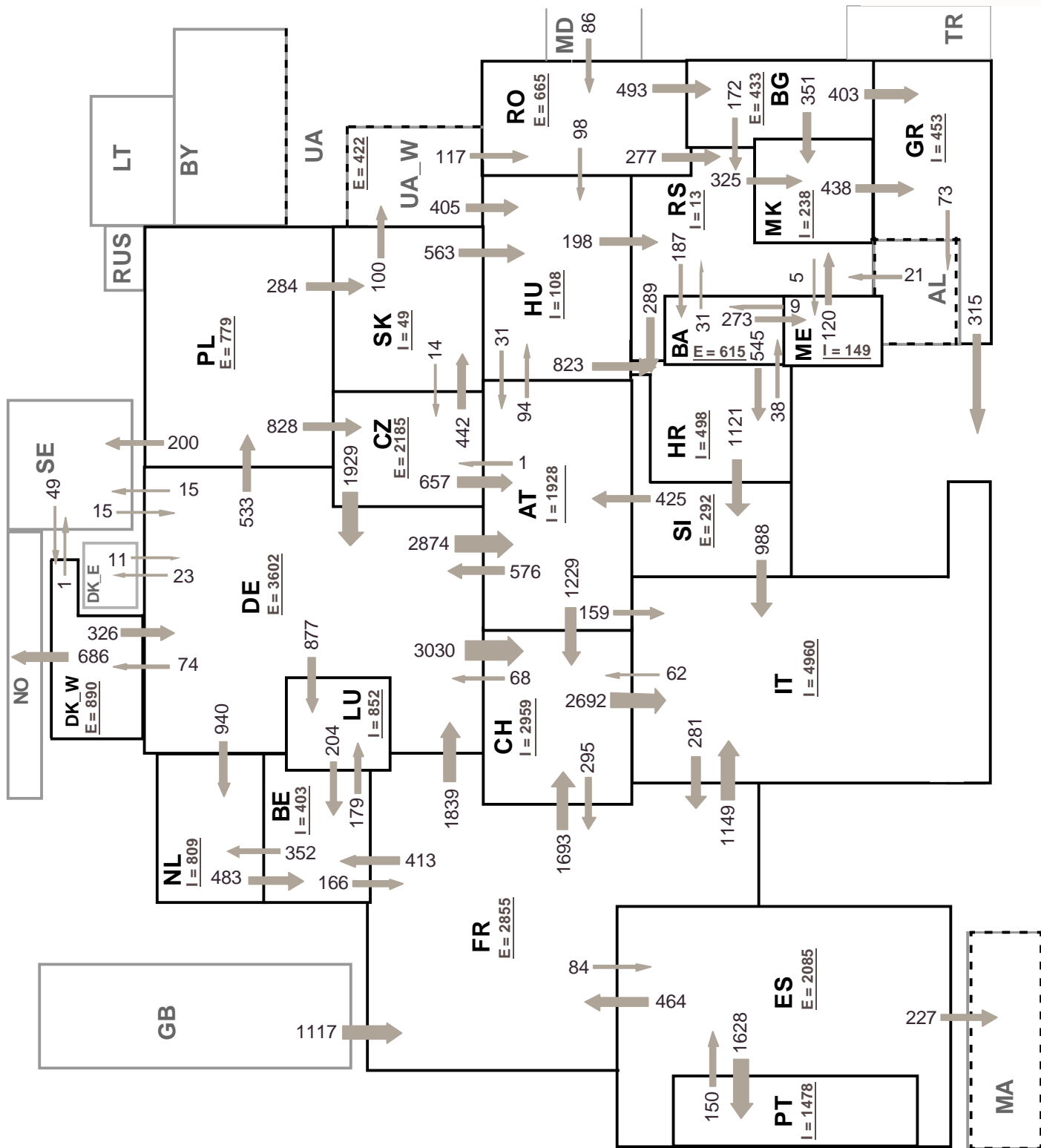
Variation of the last 12 months' consumption in %

February 2009



* CS consumption values of the last 12 months until December 2006; variation ME and RS will be published from the second quarter 2009 on

7



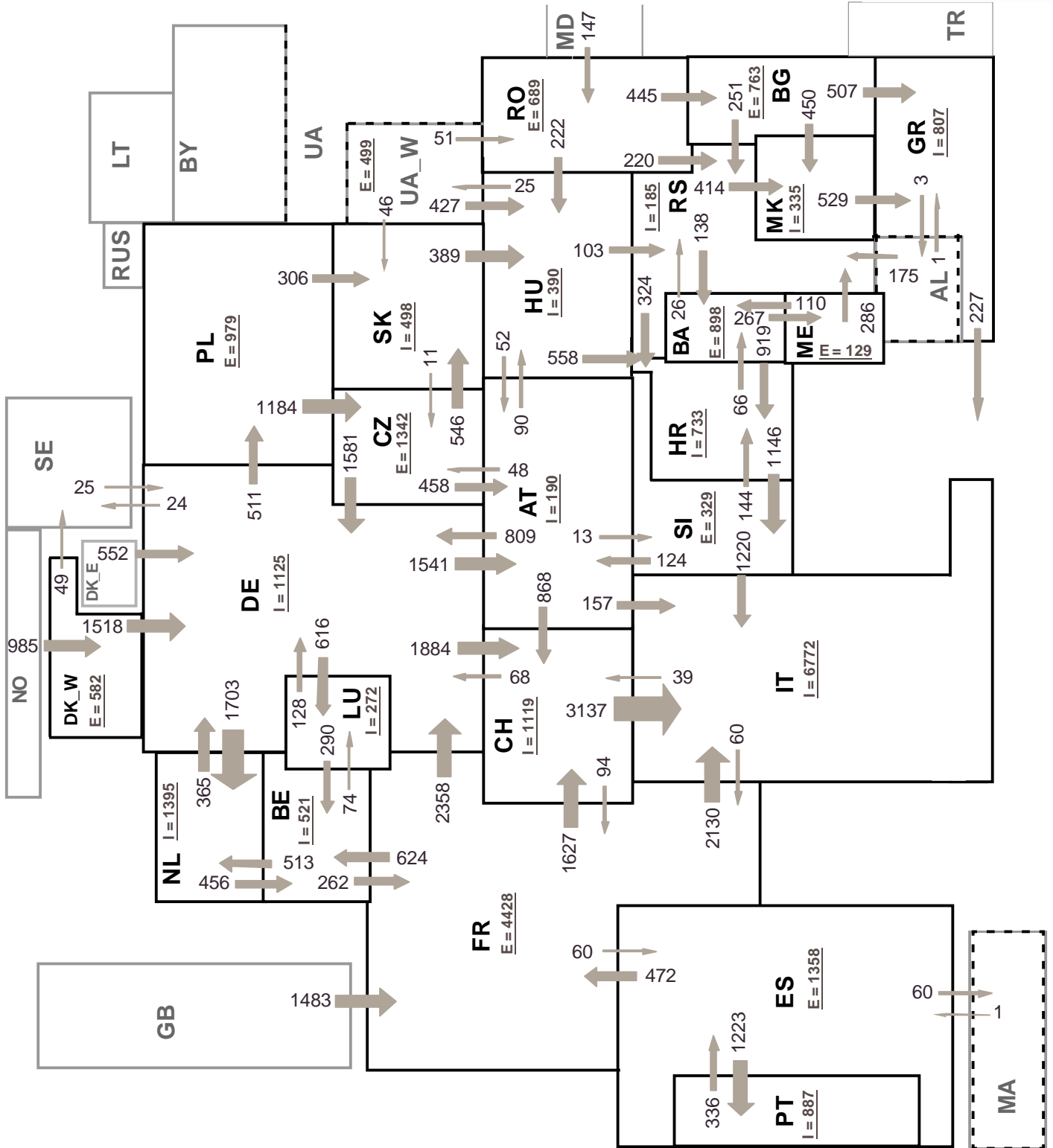
Sum of load flows in MW

UCTE = 35587 MW

Total = 38733 MW

Synchronous operation with UCTE region

I = Import balance
E = Export balance



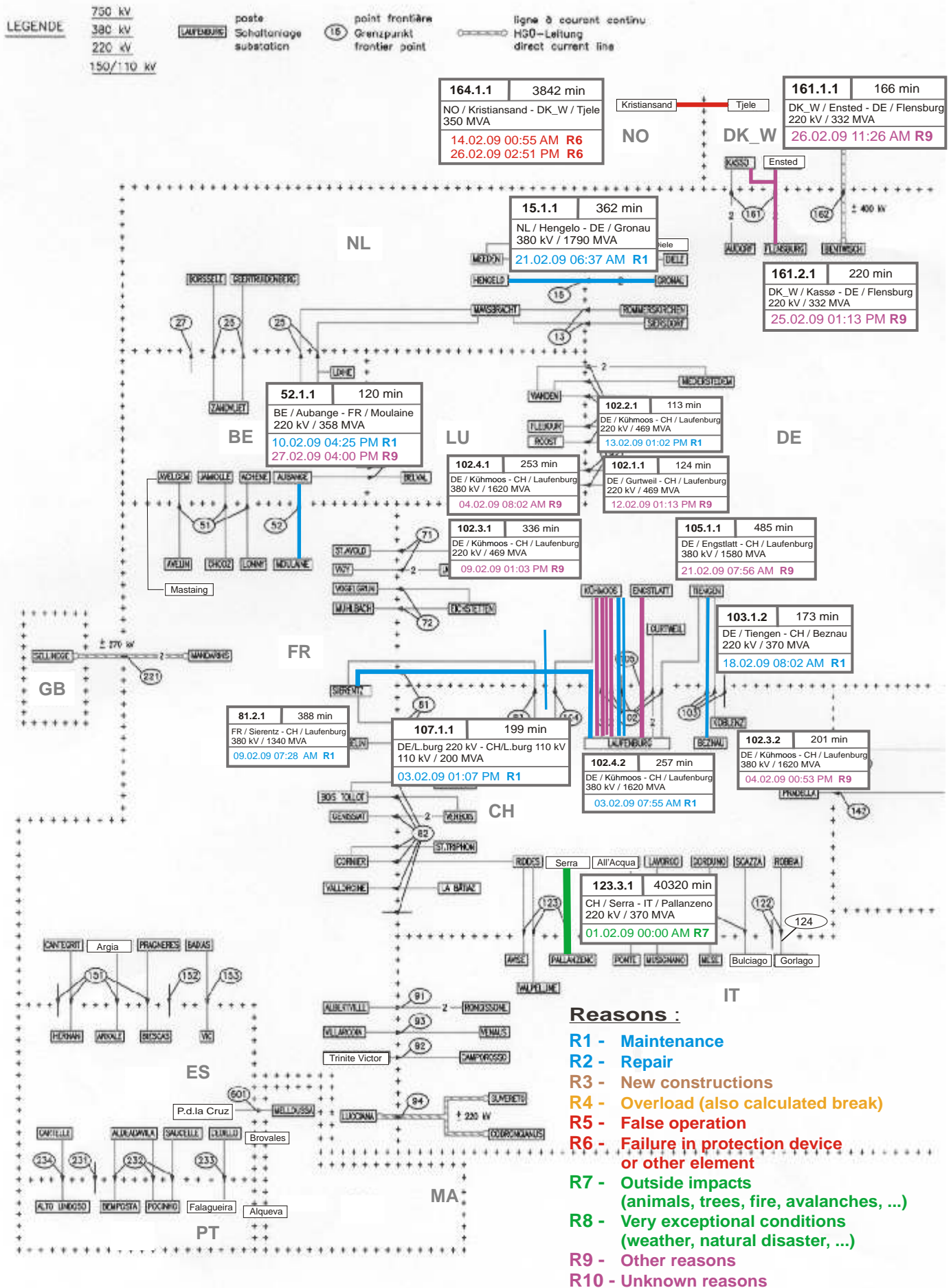
Sum of load flows in MW

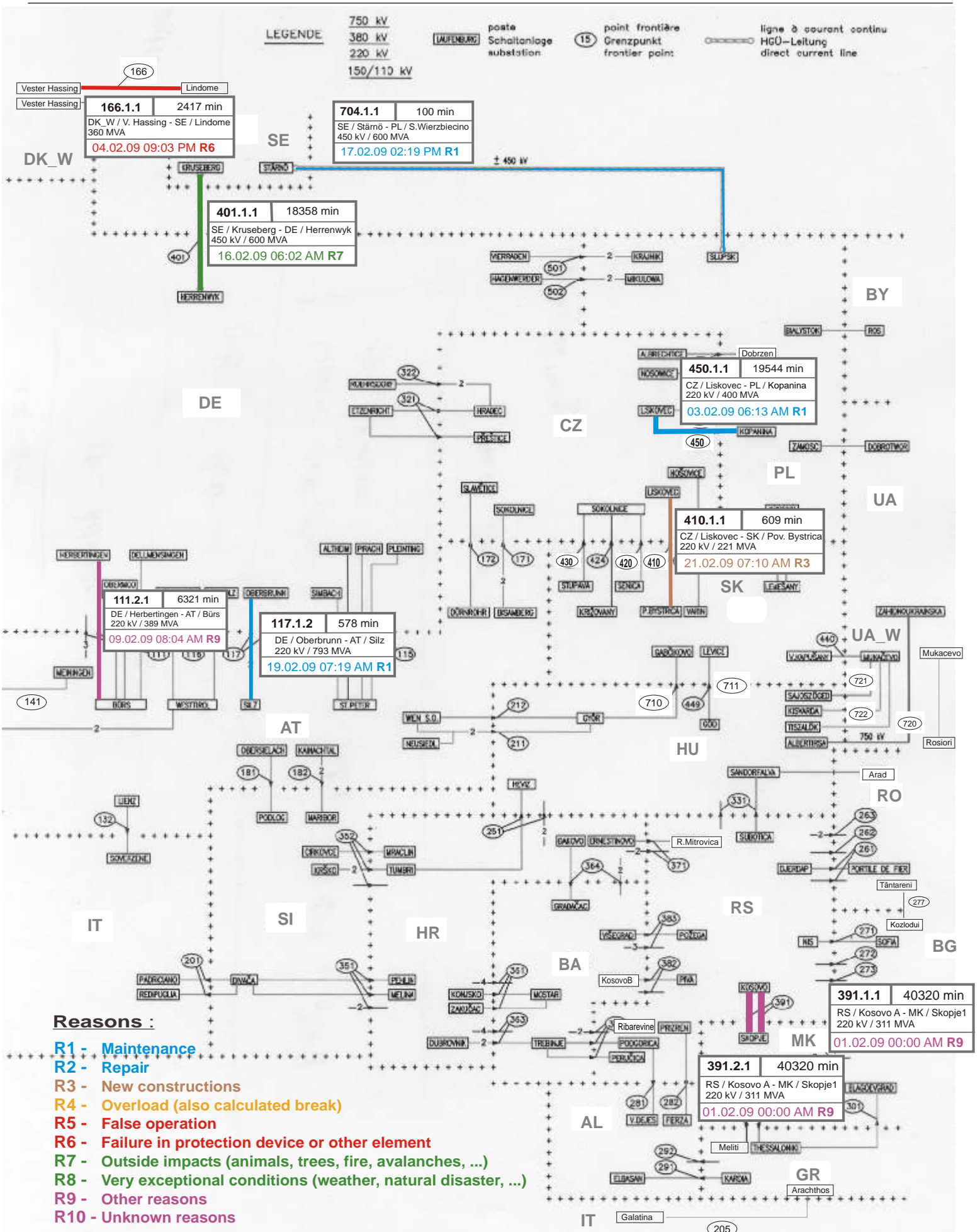
UCTE = 37297 MW

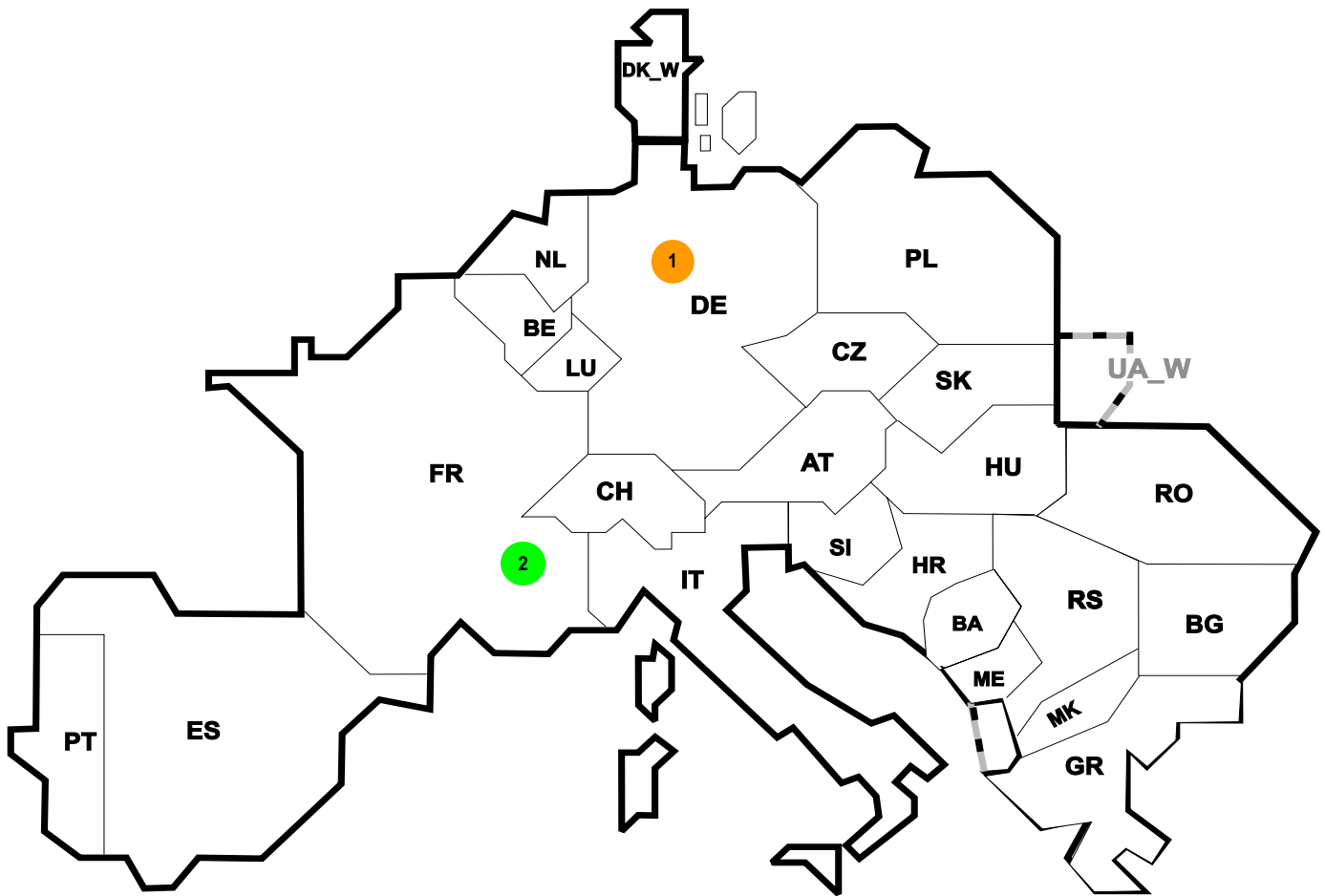
Total = 41351 MW

Synchronous operation with UCTE region

I = Import balance
E = Export balance







Reasons:

R4 Overload (also calculated break)

R5 False operation

R6 Failure in protection device or other element

R7 Outside impacts (animals, trees, fire, avalanches, ...)

R8 Very exceptional conditions (weather, natural disaster, ...)

R9 Other reasons

R10 Unknown reasons

No	Country	Substation	Reason	Energy not supplied ² [MWh]	Total loss of power [MW]	Restoration time [min]	Equivalent time of interruption ¹
1	DE	Lüstringen	R4	9	50	10	0,009
2	FR	Cordeac	R8	4	14	15	0,004

¹ (year [in min] * energy not supplied) / consumption last 12 months

Control area	Export Programs	Import Programs	Export Programs at 03:00	Import Programs at 03:00	Export Programs at 11:00	Import Programs at 11:00
AT	36718	1092057	2176	486	1731	557
BA	585522	122895	261	100	487	100
BE	356595	651329	54	456	269	588
BG	n.a.	n.a.	n.a.	n.a.	n.a.	n.a.
CH	1793937	2871393	1447	4439	3340	4497
CZ	1927971	599951	3209	902	2899	1512
DE	3224223	1530848	4611	2909	2379	2793
DK_W	478661	387955	335	732	1565	42
ES	n.a.	n.a.	n.a.	n.a.	n.a.	n.a.
FR	5752722	2525382	6661	3833	8303	3855
GR	252485	562285	307	749	226	1083
HR	78322	455763	201	703	150	877
HU	772416	1043471	1382	1505	1333	1735
IT	140368	4262466	343	5303	99	6871
ME	385406	271987	267	247	157	277
MK	0	188300	154	333	118	440
NL	665972	1526017	648	1461	546	1935
PL	392174	213628	695	114	800	0
PT	110222	245577	0	1500	0	928
RO	470806	90765	780	119	859	185
RS	358646	370754	488	496	917	734
SI	748461	528785	1127	881	1047	816
SK	307670	496461	356	332	149	538
UA_W	300304	0	421	0	500	0

- Control areas can differ from national borders (i.e. German block which includes parts of AT, LU and DK).

- Values are calculated on an hourly base (MWh).

- This values are not the provisional values entered in the VULCANUS system, but the definitive values after an eventual correction during the actual date.

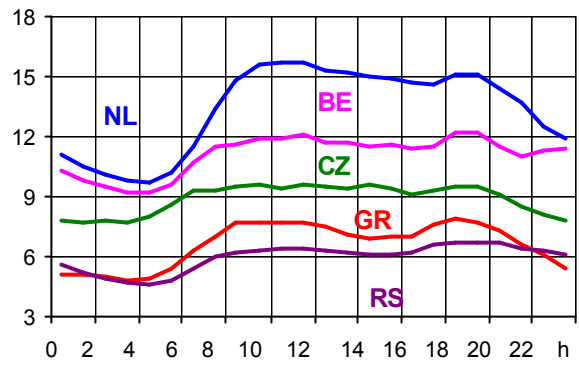
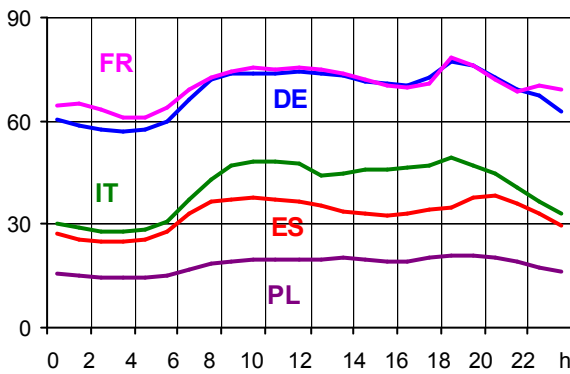
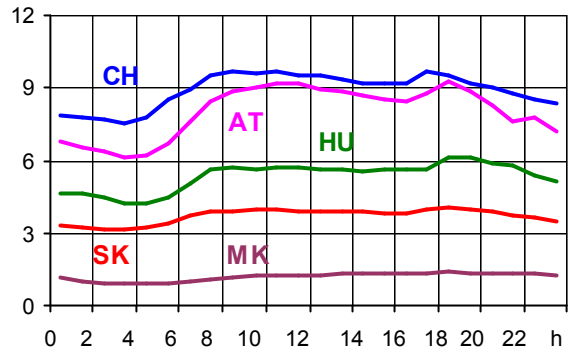
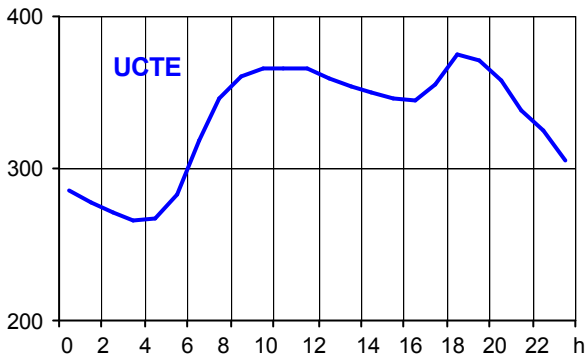
- Export Programs: Sum of all positive values of every hour of every border
 - Import Programs: Sum of all negative values of every hour of every border

- Export Programs at 03:00: Sum of all positive values the third Wednesday from 02:00 to 03:00 a.m.
 - Import Programs at 03:00: Sum of all negative values the third Wednesday from 02:00 to 03:00 a.m.

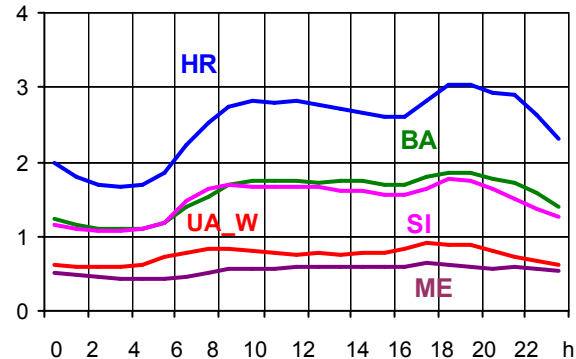
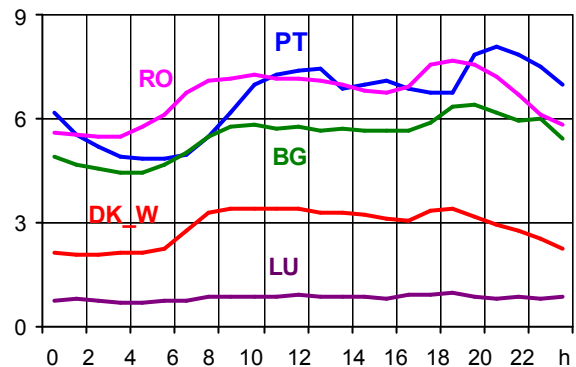
- Export Programs at 11:00: Sum of all positive values the third Wednesday from 10:00 to 11:00 a.m.
 - Import Programs at 11:00: Sum of all negative values the third Wednesday from 10:00 to 11:00 a.m.

Consumption hourly load curves on 18.02.2009 CET

Values in GW



	Highest load MW	var.% ¹	Load representativity %
AT	9261	6,6	100
BA	1864	0,5	100
BE ²	12192	-5,1	100
BG	6426	0,3	99
CH	9695	3,1	100
CZ	9597	0,8	100
DE	77444	-3,8	91
DK_W	3430	2,4	100
ES	38307	-3,1	98
FR	78154	7,3	100
GR	7857	-4,5	100
HR	3035	6,9	100
HU	6108	-1,3	100
IT	49170	-5,9	100
LU	952	-7,0	100
ME	633	-11,5	100
MK	1374	0,2	100
NL	15741	-2,0	100
PL ³	20948	-1,9	100
PT	8051	1,6	97
RO	7678	-6,8	100
RS	6749	5,3	100
SI	1777	-7,4	100
SK	4051	-1,2	100
UCTE	374407	-1,9	
UA_W	901	-1,3	100



¹ Variation as compared to corresponding month of the previous year

² The reported figures are best estimates based on actual measurements and extrapolations.

³ Operational data

Contact

Boulevard Saint-Michel, 15
B-1040 Brussels – Belgium
Tel +32 2 741 69 40
Fax +32 2 741 69 49

info@ucte.org
www.ucte.org