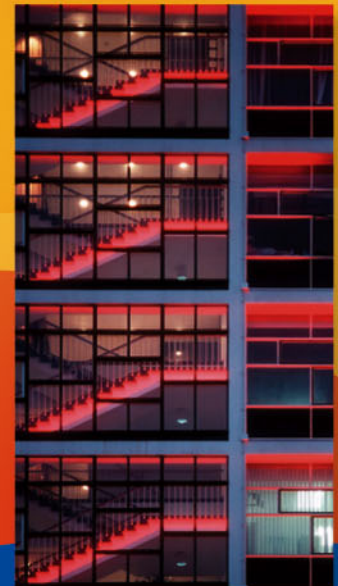
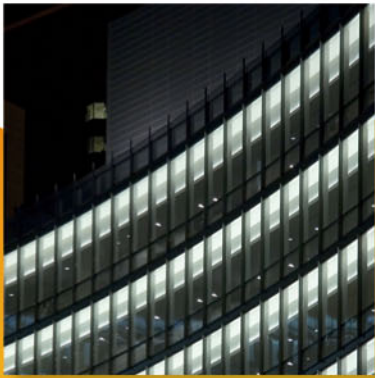


# UCTE



## February 2006

Monthly provisional values  
union for the co-ordination of transmission of electricity

<b>Table of contents</b>		<b>Page</b>
1	Electricity supply situation of the countries	2
2	Physical energy flows	3
3	Monthly consumption	4
4	Monthly consumption variation	6
5	Consumption of the last 12 months	8
6	Variation of the last 12 months' consumption	10
7	Load flows (night)	12
8	Load flows (day)	13
9	Unavailability of international tie lines ( major events )	14
10	Network reliability ( major events )	16
11	Scheduled exchanges	17
12	Load on the 3 <sup>rd</sup> Wednesday	18

#### **General remarks and abbreviations used in the tables**

- All values of production and consumption in chapter 1, 3&4, 5&6 and 12 are calculated to represent 100% of the national values.
- DK\_W Denmark West represents the Western part of Denmark synchronously interconnected with UCTE (Jutland and Funen).
- UA\_W Ukraine West represents the so-called Burshtyn Island synchronously interconnected with UCTE.
- CET Central European Time

Countries	Net production in GWh							Exchange balance in GWh	Pump in GWh	Consumption in GWh			
	Therm. nuclear	Therm. conv.	Hydro prod	Other renew.	Of which wind	Not identify	Total			monthly	var. [%]	last 12 months	var. [%]
AT	0	2757	1851	0	0	303	4911 <sup>1</sup>	1104	258	5757	14,0	64948	-1,0
BA	0	669	502	0	0	0	1171	-195	0	976	-0,7	11265	5,0
BE <sup>2</sup>	3646	3189	129	173	22	0	7137 <sup>1</sup>	655	130	7662	3,2	87390	-0,7
BG	1967	2046	350	0	0	0	4363	-820	13	3530	3,2	36608	4,8
CH	2186	222	1971	94	1	0	4473 <sup>1</sup>	1266	152	5587	-0,1	63262	3,9
CS	0	2660	1216	0	0	0	3876 <sup>1</sup>	150	34	3992	-3,7	41788	1,2
CZ	2301	4244	187	9	2	0	6741 <sup>1</sup>	-776	80	5885	2,6	63421	3,1
DE	13773	34117	1596	3007	2203	0	52493 <sup>1</sup>	-3399	758	48336	-0,9	557648	0,7
ES	4891	13978	1548	2346	1920	0	22763 <sup>1</sup>	-597	549	21618	-0,7	251262	-1,0
FR	35118	7951	4575	415	135	0	48059	-967	626	46466	0,6	485846	1,2
GR	0	3423	543	93	86	0	4059 <sup>1</sup>	304	79	4284	2,1	53271	3,6
HR	0	486	578	1	1	0	1065 <sup>1</sup>	431	11	1485	-1,0	16648	3,9
HU <sup>3</sup>	1074	1735	0	0	0	0	2809 <sup>1</sup>	540	0	3349	2,3	39602	3,6
IT	0	21991	2936	699	301	0	25626 <sup>1</sup>	2165	689	27102	1,6	330890	1,6
LU	0	186	68	10	5	0	264	351	86	529	10,4	6365	1,0
MK	0	451	146	0	0	0	597 <sup>1</sup>	229	0	826	4,6	8213	9,8
NL	304	7379	0	620	223	0	8303 <sup>1</sup>	1233	0	9536	1,1	115108	3,5
PL	0	12672	244	21	15	0	12937 <sup>1</sup>	-1186	182	11569	3,4	132193	1,9
PT	0	2941	541	322	174	0	3804 <sup>1</sup>	568	33	4339	2,9	50247	4,1
RO	440	3365	1235	0	0	0	5040 <sup>1</sup>	-500	3	4537	-0,7	51907	1,7
SI	448	415	153	0	0	0	1016	75	0	1091	4,6	12923	-2,6
SK	1525	527	285	0	0	222	2559 <sup>1</sup>	-155	27	2377	1,1	26439	1,1
<b>UCTE</b>	<b>67673</b>	<b>127404</b>	<b>20654</b>	<b>7810</b>	<b>5088</b>	<b>525</b>	<b>224066<sup>1</sup></b>	<b>476</b>	<b>3710</b>	<b>220833</b>	<b>0,9</b>	<b>2507244</b>	<b>1,3</b>
DK_W	0	2005	3	432	299	1	2441 <sup>1</sup>	-608	0	1833	0,7	21438	1,7
UA_W	0	729	6	0	0	0	735 <sup>1</sup>	-318	0	417	-4,8	4335	-1,7

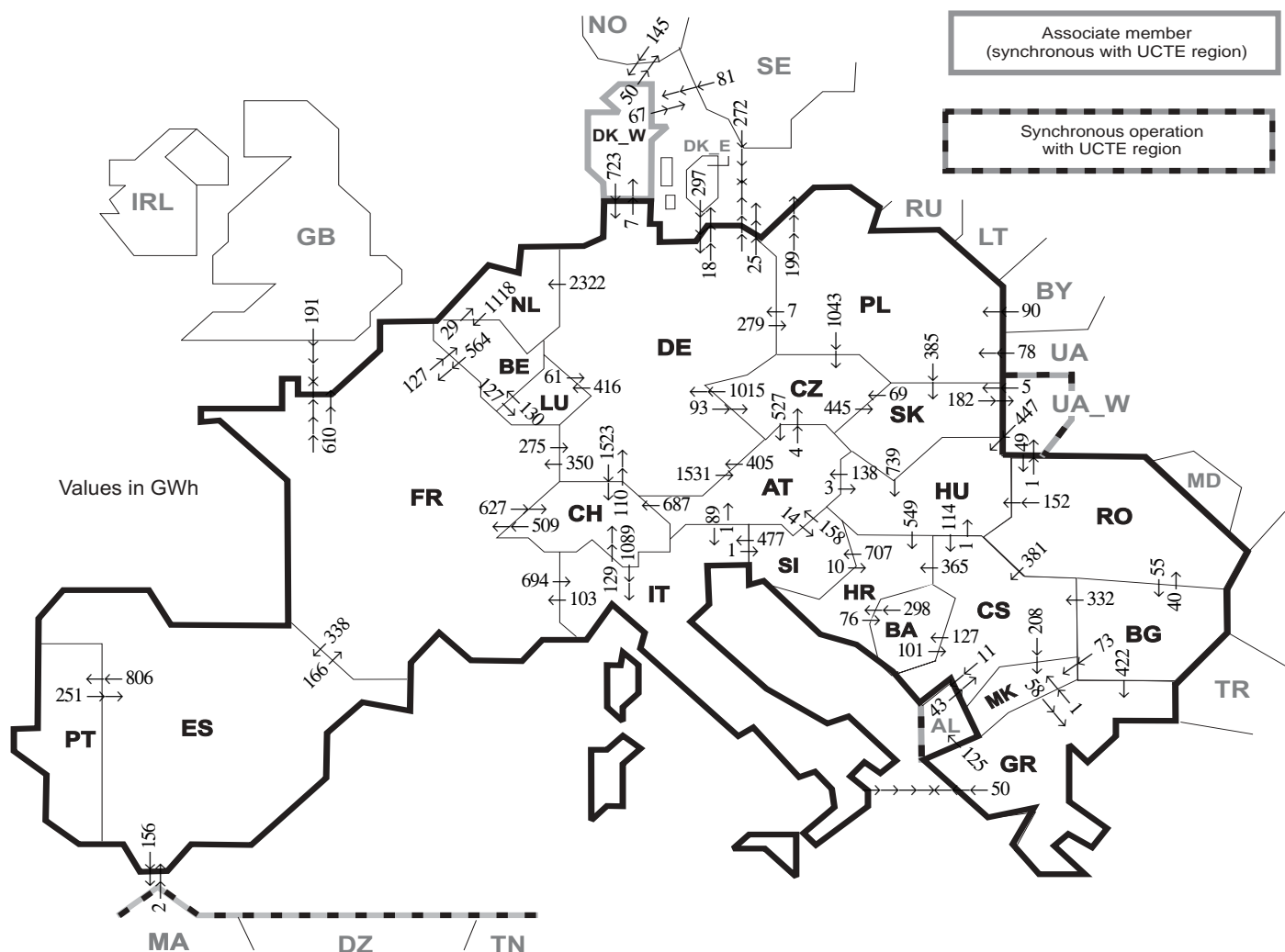
<sup>1</sup> Including deliveries from industry

<sup>2</sup> The reported figures are best estimates based on actual measurements and extrapolations

<sup>3</sup> Data on hydro, other renewable, not clearly identifiable production are not yet available

All representativities of the national production and consumption values used to calculate values at a representativity of 100% as stated in the table above

Countries	AT	BA	BE	BG	CH	CS	CZ	DE	ES	FR	GR	HR	HU	IT	LU	MK	NL	PL	PT	RO	SI	SK	DK_W	UA_W
Production																								
Therm.nuclear	100	100	100	100	100	100	100	100	100	100	100	100	100	100	100	100	100	100	100	100	100	100	100	100
Thermal conv.	100	100	100	100	100	100	100	100	97	100	100	100	100	100	100	100	100	100	94	100	100	100	100	100
Hydro prod	100	100	100	100	100	100	100	100	100	100	100	100	100	100	100	100	100	100	100	100	100	100	100	100
Other renew.	100	100	100	100	100	100	100	100	95	100	100	100	100	100	100	100	100	100	100	100	100	100	100	100
Not identify	100	100	100	100	100	100	100	100	100	100	100	100	100	100	100	100	100	100	100	100	100	100	100	100
Consumption	100	100	100	100	100	100	100	100	98	100	100	100	100	100	100	100	100	100	96	100	95	100	100	100



Exporting countries	Importing countries																				Sum export						
	AT	BA	BE	BG	CH	CS	CZ	DE	ES	FR	GR	HR	HU	IT	LU	MK	NL	PL	PT	RO		SI	SK	DK_W	UA_W	Other III <sup>1</sup>	
AT	-	-	-	-	687	-	4	405	-	-	-	3	89	-	-	-	-	-	-	-	14	-	-	-	-	-	1202
BA	-	-	-	-	-	101	-	-	-	-	-	298	-	-	-	-	-	-	-	-	-	-	-	-	-	-	399
BE	-	-	-	-	-	-	-	-	-	564	-	-	-	-	127	-	29	-	-	-	-	-	-	-	-	-	720
BG	-	-	-	-	-	332	-	-	-	-	422	-	-	-	-	73	-	-	-	40	-	-	-	-	-	0	867
CH	0	-	-	-	-	-	-	110	-	509	-	-	-	1089	-	-	-	-	-	-	-	-	-	-	-	-	1708
CS	-	127	-	0	-	-	-	-	-	-	-	365	1	-	208	-	-	-	-	0	-	-	-	-	-	11	712
CZ	527	-	-	-	-	-	-	1015	-	-	-	-	-	-	-	-	-	0	-	-	445	-	-	-	-	-	1987
DE	1531	-	-	-	1523	-	93	-	350	-	-	-	-	416	-	2322	279	-	-	-	-	-	7	-	43	6564	
ES	-	-	-	-	-	-	-	-	166	-	-	-	-	-	-	-	-	-	806	-	-	-	-	-	-	156	1128
FR	-	-	127	-	627	-	-	275	338	-	-	-	694	-	-	-	-	-	-	-	-	-	-	-	610	2671	
GR	-	-	-	0	-	-	-	-	-	-	-	-	50	-	1	-	-	-	-	-	-	-	-	-	-	125	176
HR	-	76	-	-	-	0	-	-	-	-	-	-	0	-	-	-	-	-	-	-	707	-	-	-	-	-	783
HU	138	-	-	-	-	114	-	-	-	-	-	549	-	-	-	-	-	-	-	0	0	0	0	-	-	801	
IT	1	-	-	-	129	-	-	-	-	103	0	-	-	-	-	-	-	-	-	-	1	-	-	-	-	234	
LU	-	-	130	-	-	-	61	-	-	-	-	-	-	-	-	-	-	-	-	-	-	-	-	-	-	191	
MK	-	-	-	0	-	0	-	-	-	-	58	-	-	-	-	-	-	-	-	-	-	-	-	-	-	-	58
NL	-	-	1118	-	-	-	0	-	-	-	-	-	-	-	-	-	-	-	-	-	-	-	-	-	-	-	1118
PL	-	-	-	-	-	-	-	1043	7	-	-	-	-	-	-	-	-	-	-	-	-	385	-	-	199	1634	
PT	-	-	-	-	-	-	-	-	251	-	-	-	-	-	-	-	-	-	-	-	-	-	-	-	-	251	
RO	-	-	-	55	-	381	-	-	-	-	-	-	152	-	-	-	-	-	-	-	-	-	-	1	0	589	
SI	158	-	-	-	-	-	-	-	-	-	-	10	477	-	-	-	-	-	-	-	-	-	-	-	-	645	
SK	-	-	-	-	-	-	69	-	-	-	-	739	-	-	-	-	-	0	-	-	-	-	-	182	-	990	
DK_W	-	-	-	-	-	-	723	-	-	-	-	-	-	-	-	-	-	-	-	-	-	-	-	-	117	840	
UA_W	-	-	-	-	-	-	-	-	-	-	-	447	-	-	-	-	-	-	-	49	5	-	-	-	-	501	
Other III <sup>1</sup>	-	-	-	0	43	-	569	2	191	0	-	-	-	-	-	-	168	-	-	0	-	-	226	-	-	1199	
<b>Sum imp</b>	<b>2355</b>	<b>203</b>	<b>1375</b>	<b>55</b>	<b>2966</b>	<b>971</b>	<b>1209</b>	<b>3165</b>	<b>591</b>	<b>1883</b>	<b>480</b>	<b>1222</b>	<b>1342</b>	<b>2399</b>	<b>543</b>	<b>282</b>	<b>2351</b>	<b>447</b>	<b>806</b>	<b>89</b>	<b>722</b>	<b>835</b>	<b>233</b>	<b>183</b>	<b>1261</b>	<b>27968</b>	

Sum of physical energy flows between UCTE countries = 24094GWh Total physical energy flows = 27968GWh

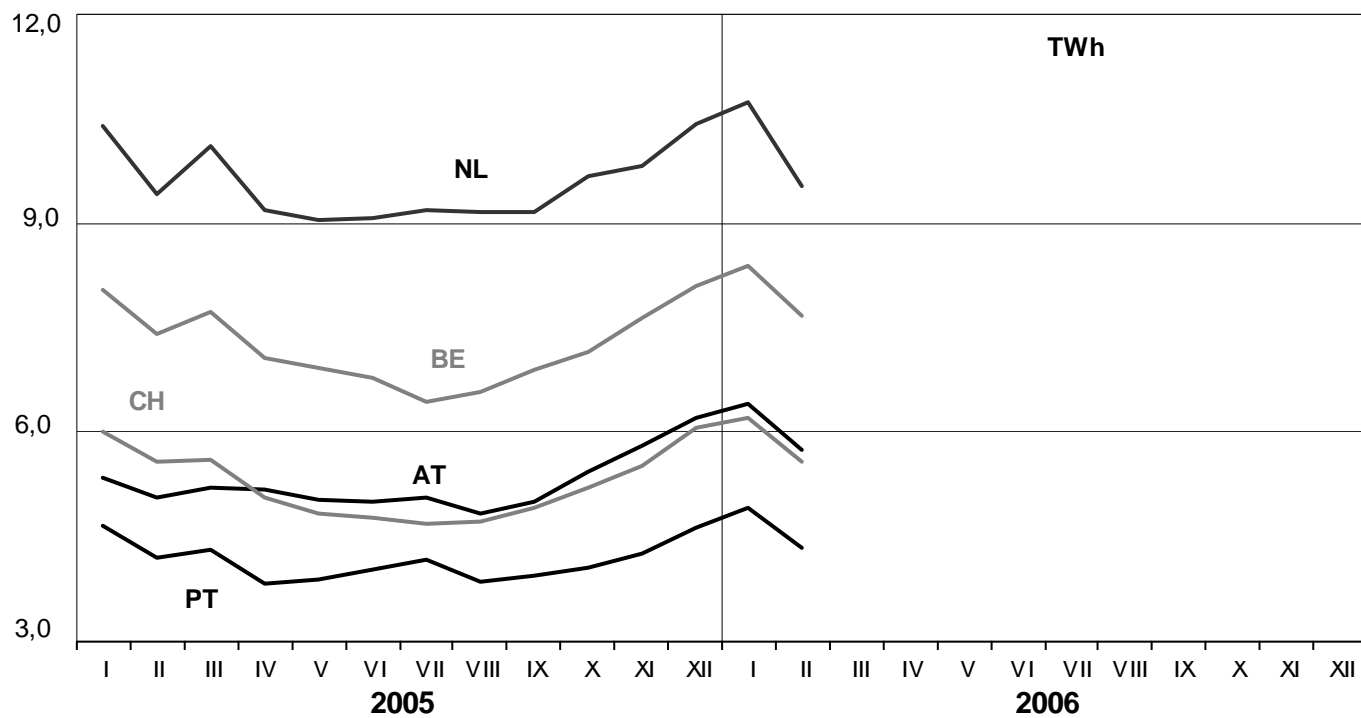
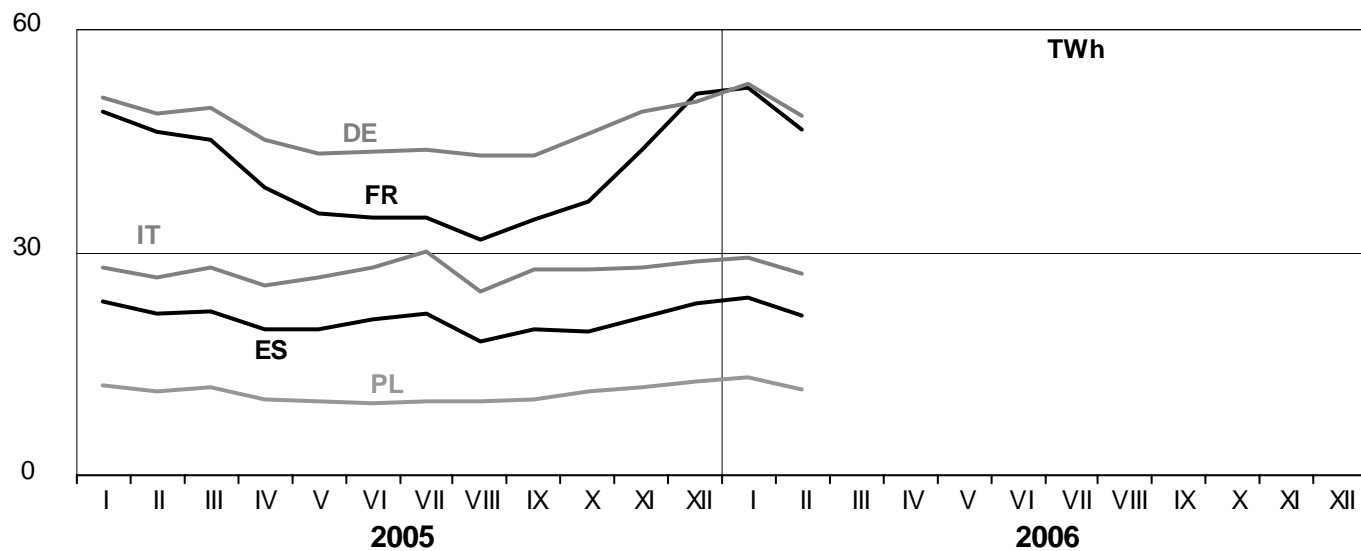
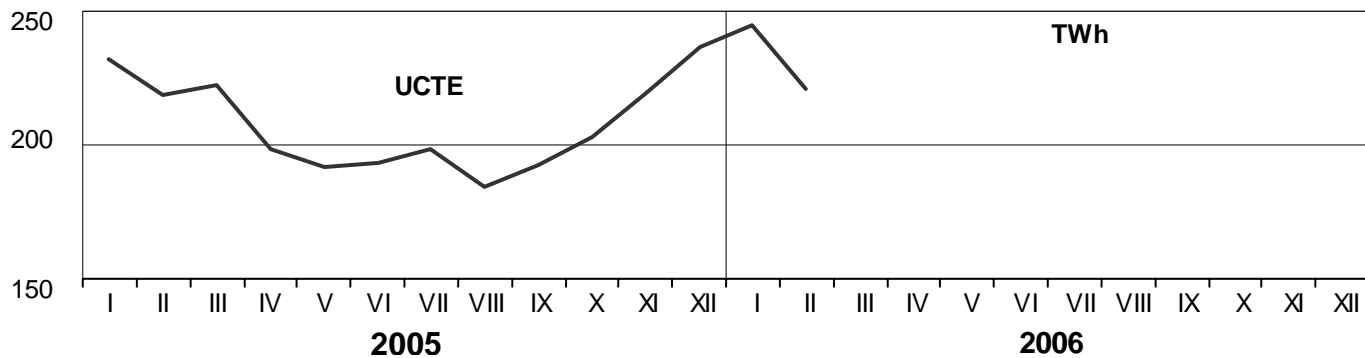
<sup>1</sup> Other III: Albania, Belarus, Denmark East, Great Britain, Morocco, Republic of Moldavia, Norway, Sweden, Republic of Turkey and Ukraina

These physical energy flows were measured on the cross-frontier transmission lines (≤ 110 kV) listed in table 9 of the Statistical Yearbook. These values may differ from the official statistics and the exchange balances in chapter 1.

# 3

## Monthly consumption

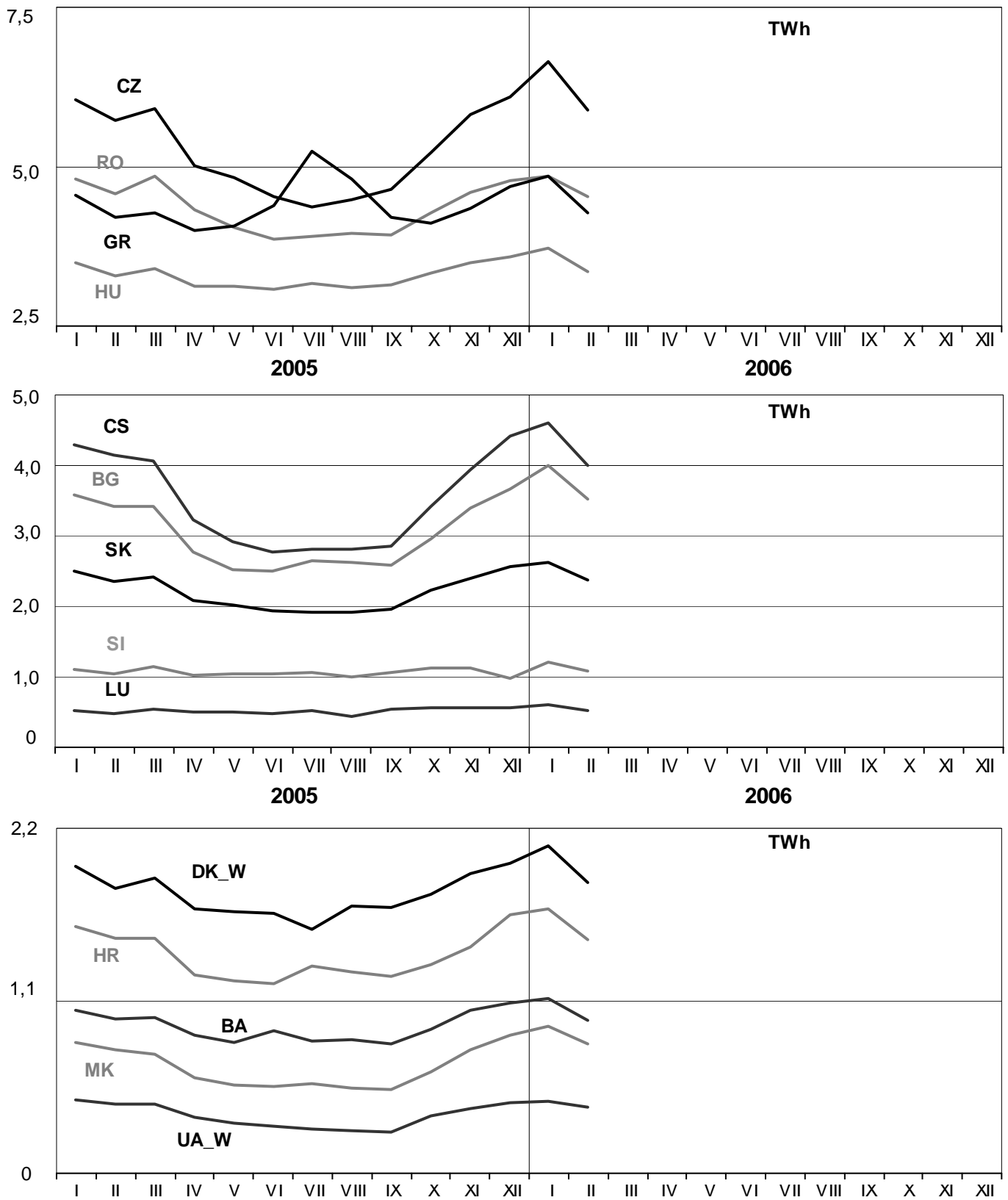
February 2006



# 3

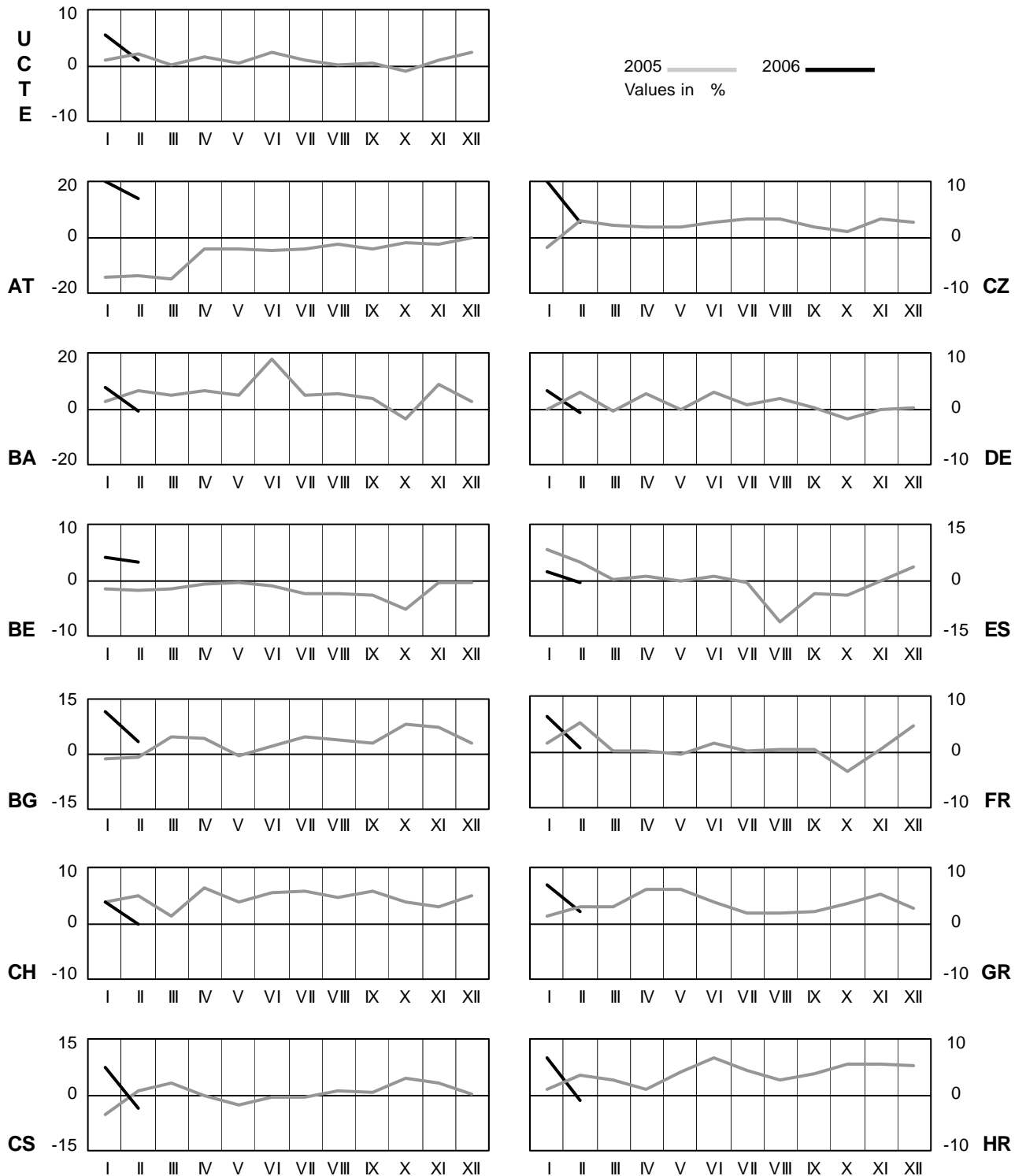
## Monthly consumption

February 2006



# 4 Monthly consumption variation

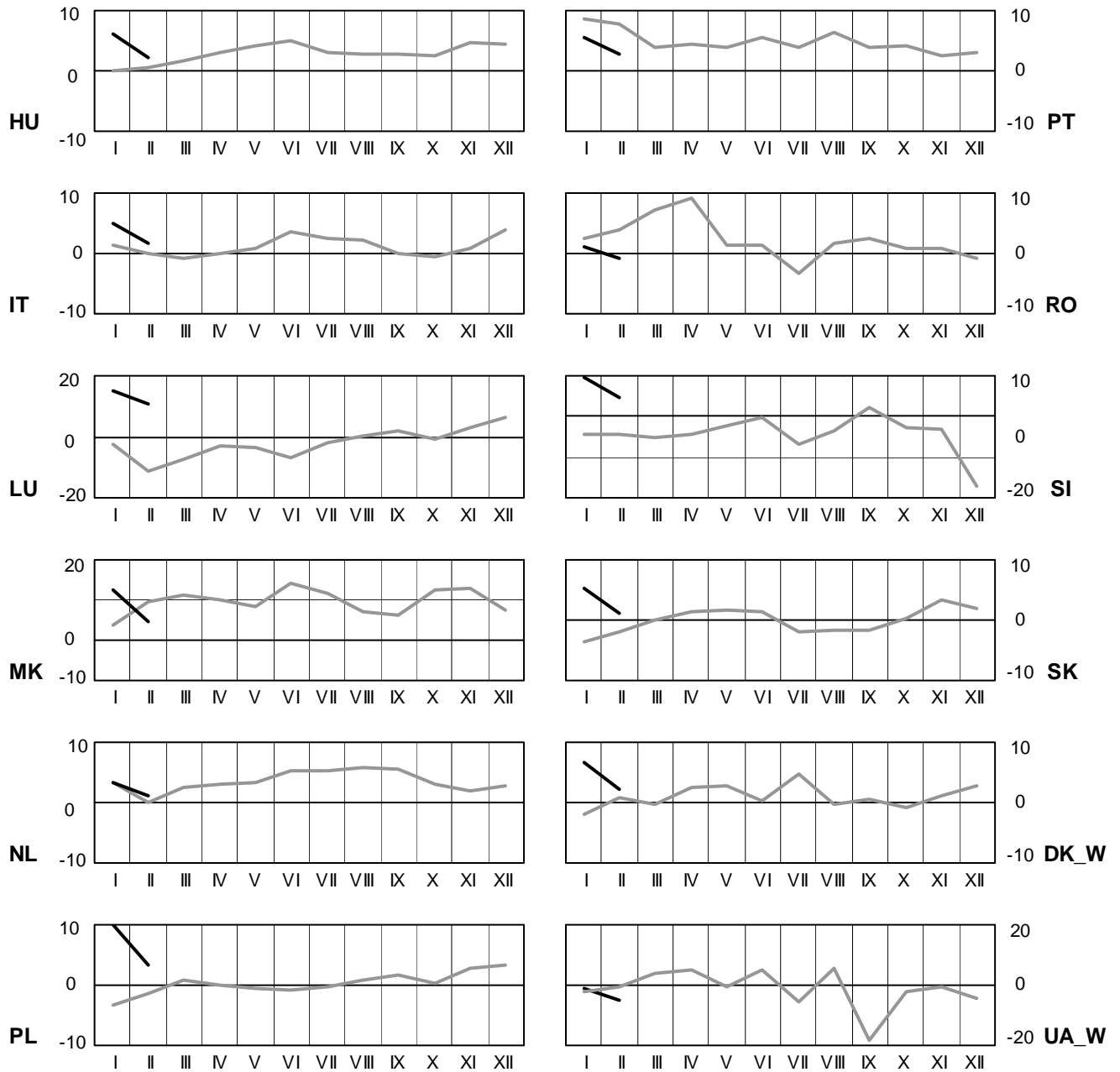
February 2006



# 4 Monthly consumption variation

February 2006

2005 — 2006 —  
Values in %



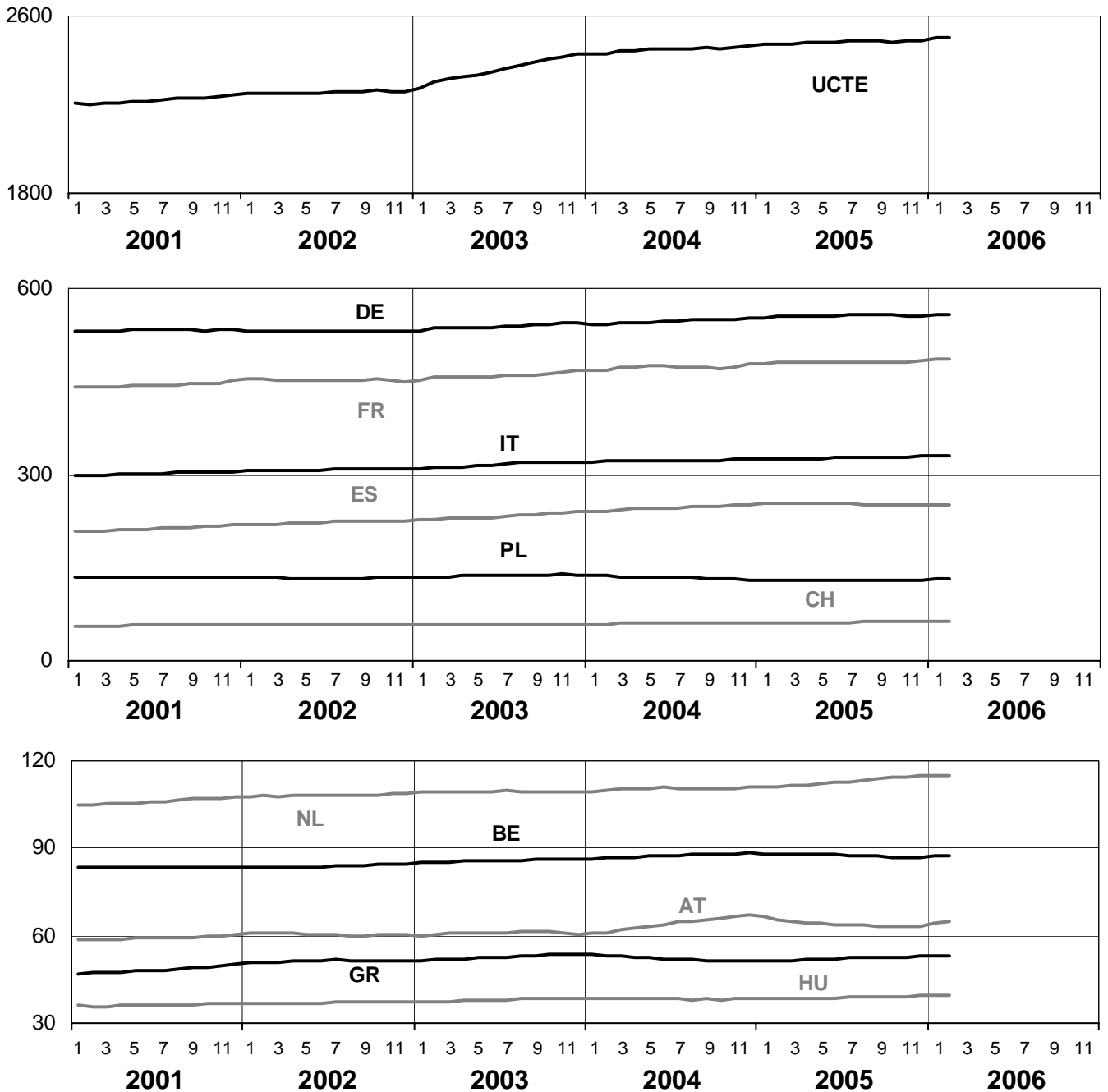


# 5

## Consumption of the last 12 months

February 2006

TWh

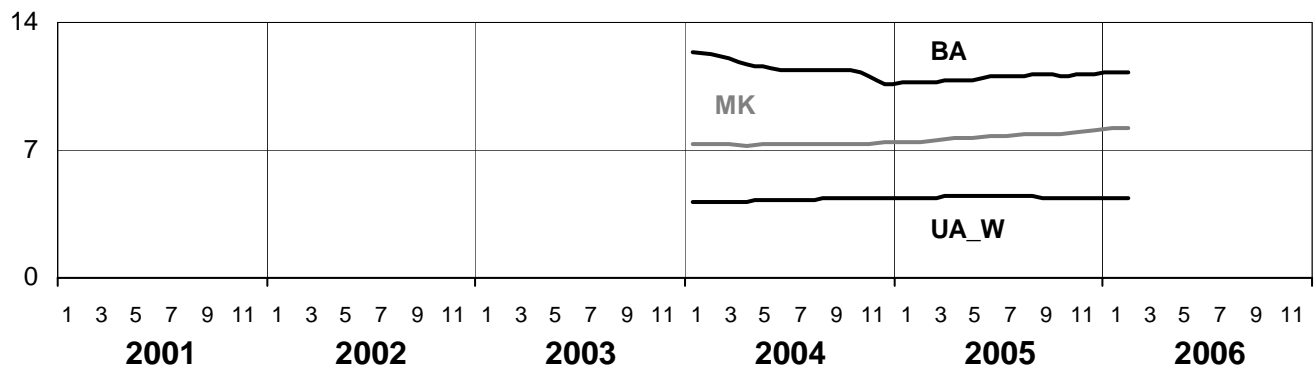
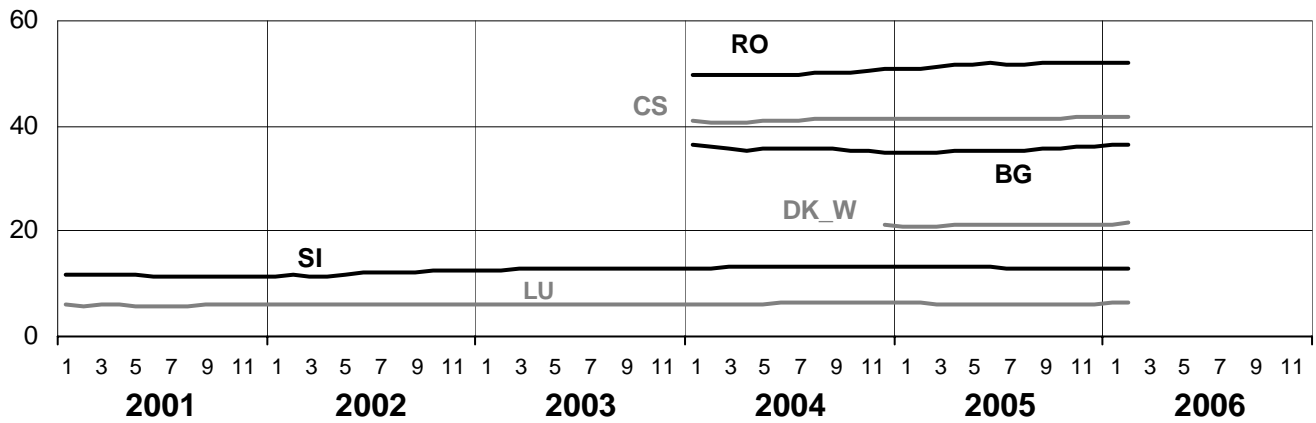
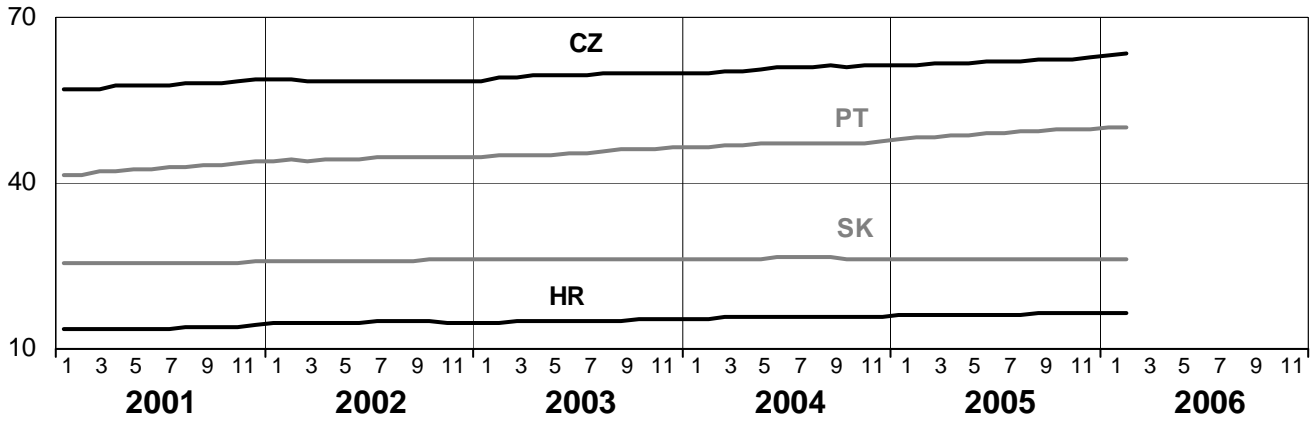


# 5

## Consumption of the last 12 months

February 2006

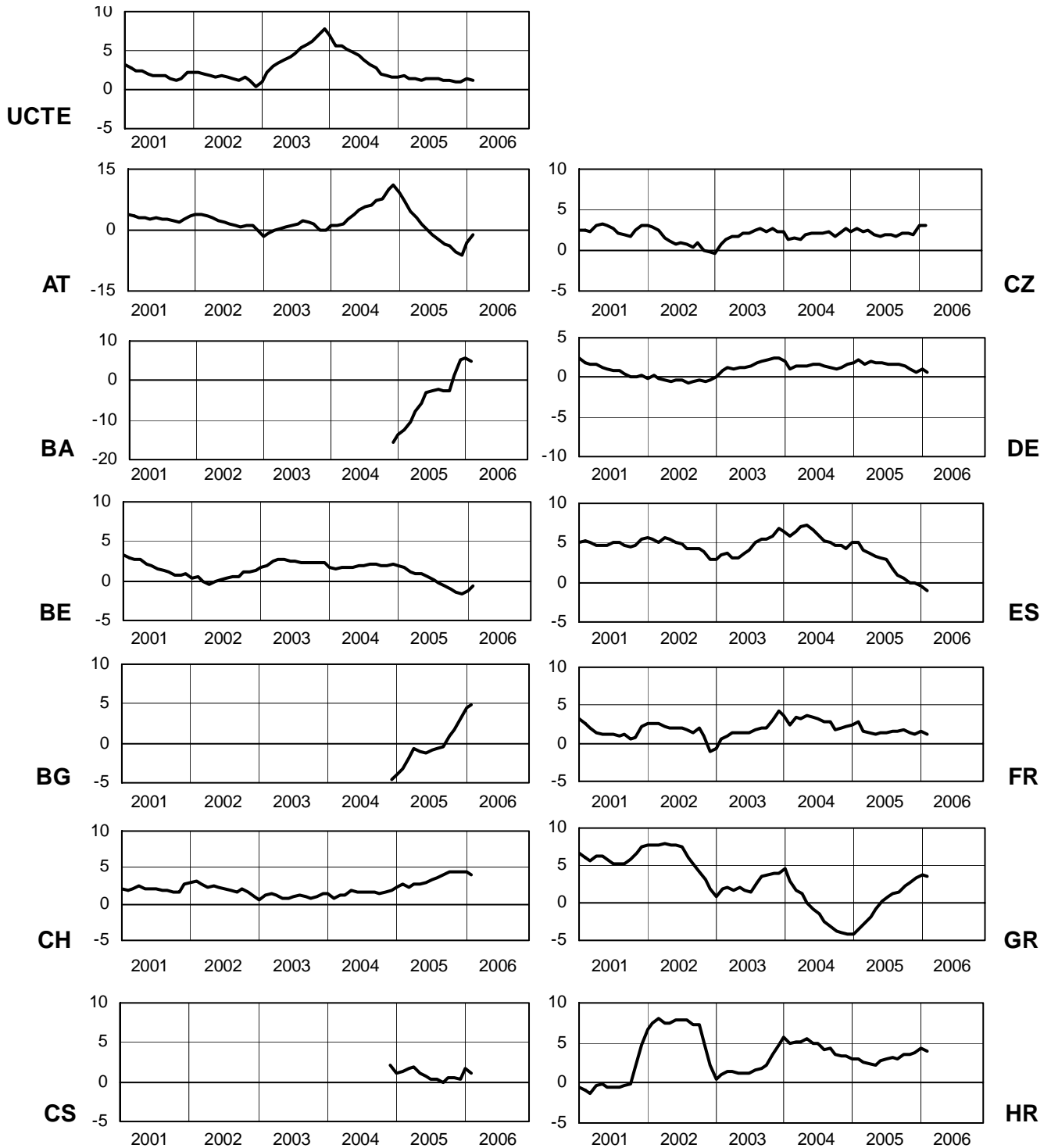
TWh



# 6

## Variation of the last 12 months' consumption in %

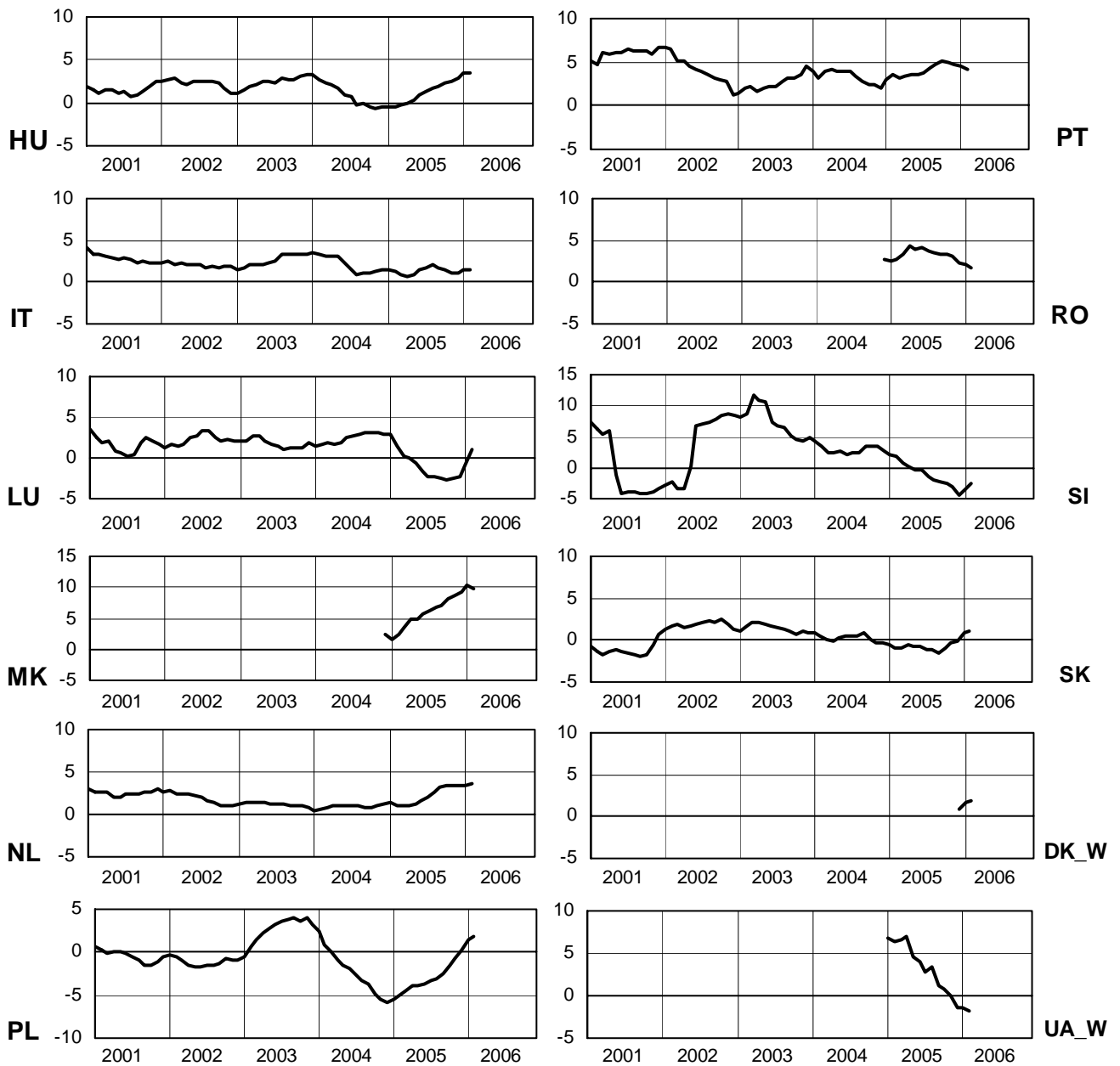
February 2006

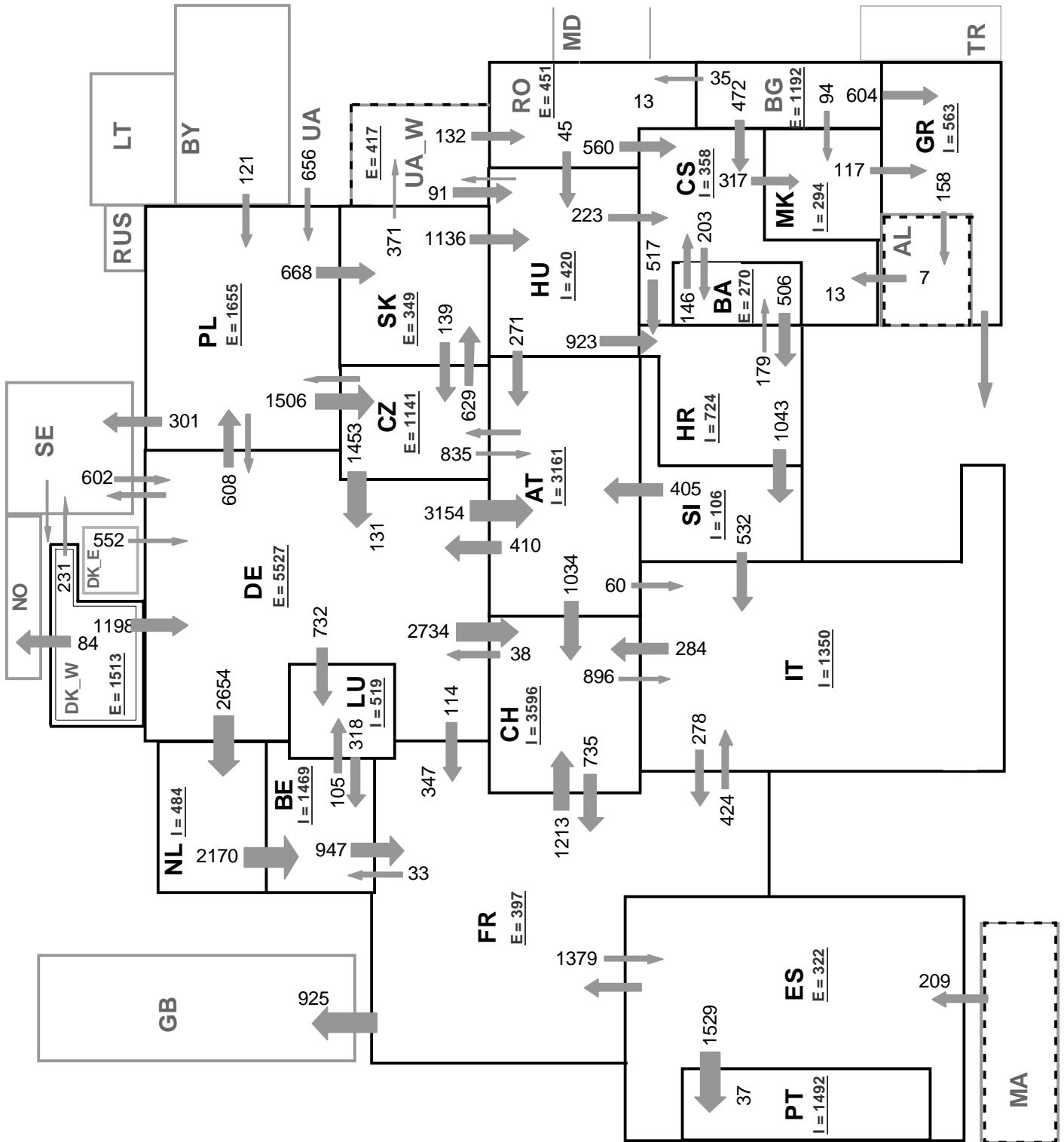


# 6

## Variation of the last 12 months' consumption in %

February 2006





Associate member

Synchronous operation with UCTE region

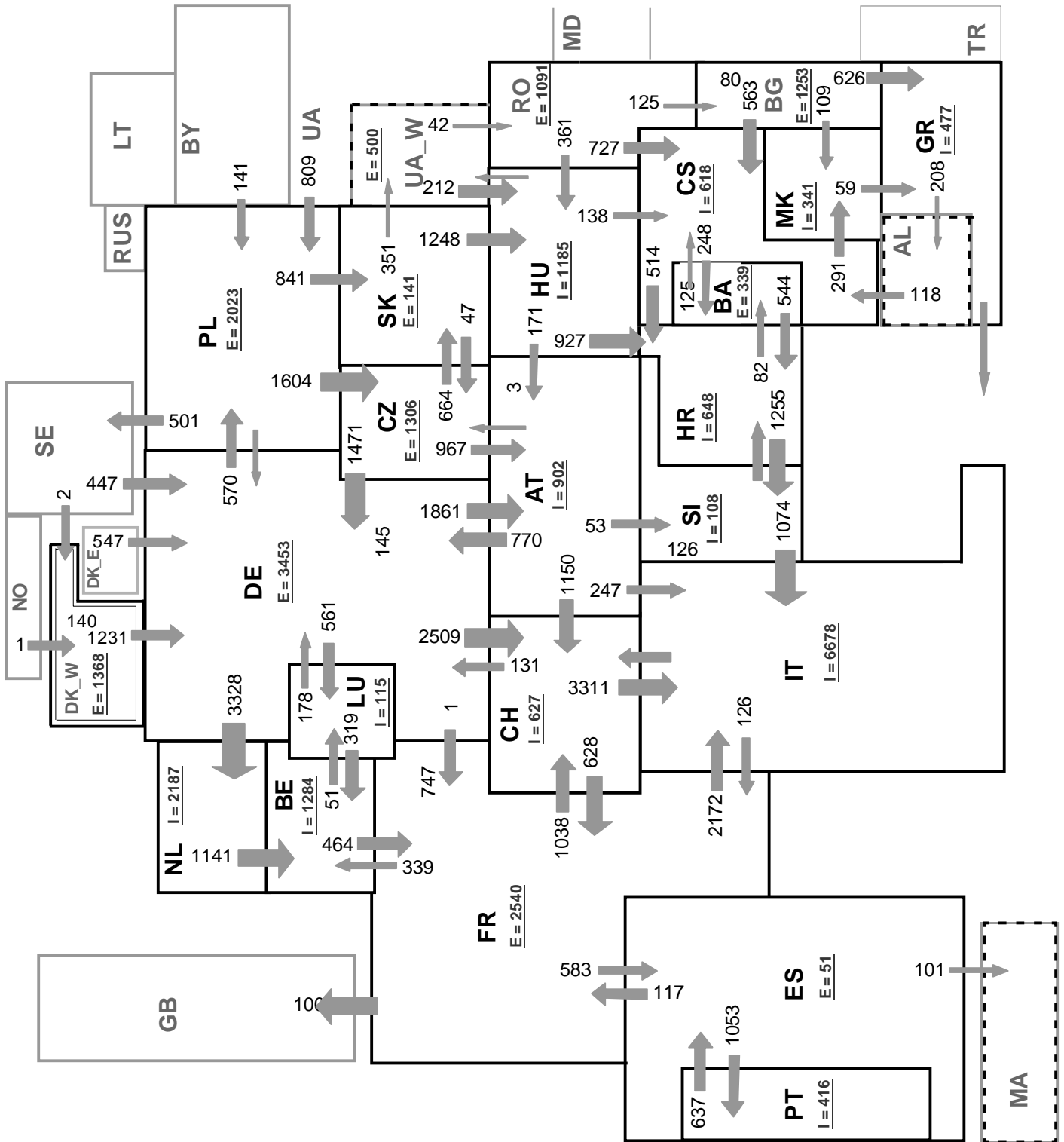
**Sum of load flows in MW:**

**UCTE = 35935 MW**

**Total = 41586 MW**

**I = Import balance**

**E = Export balance**



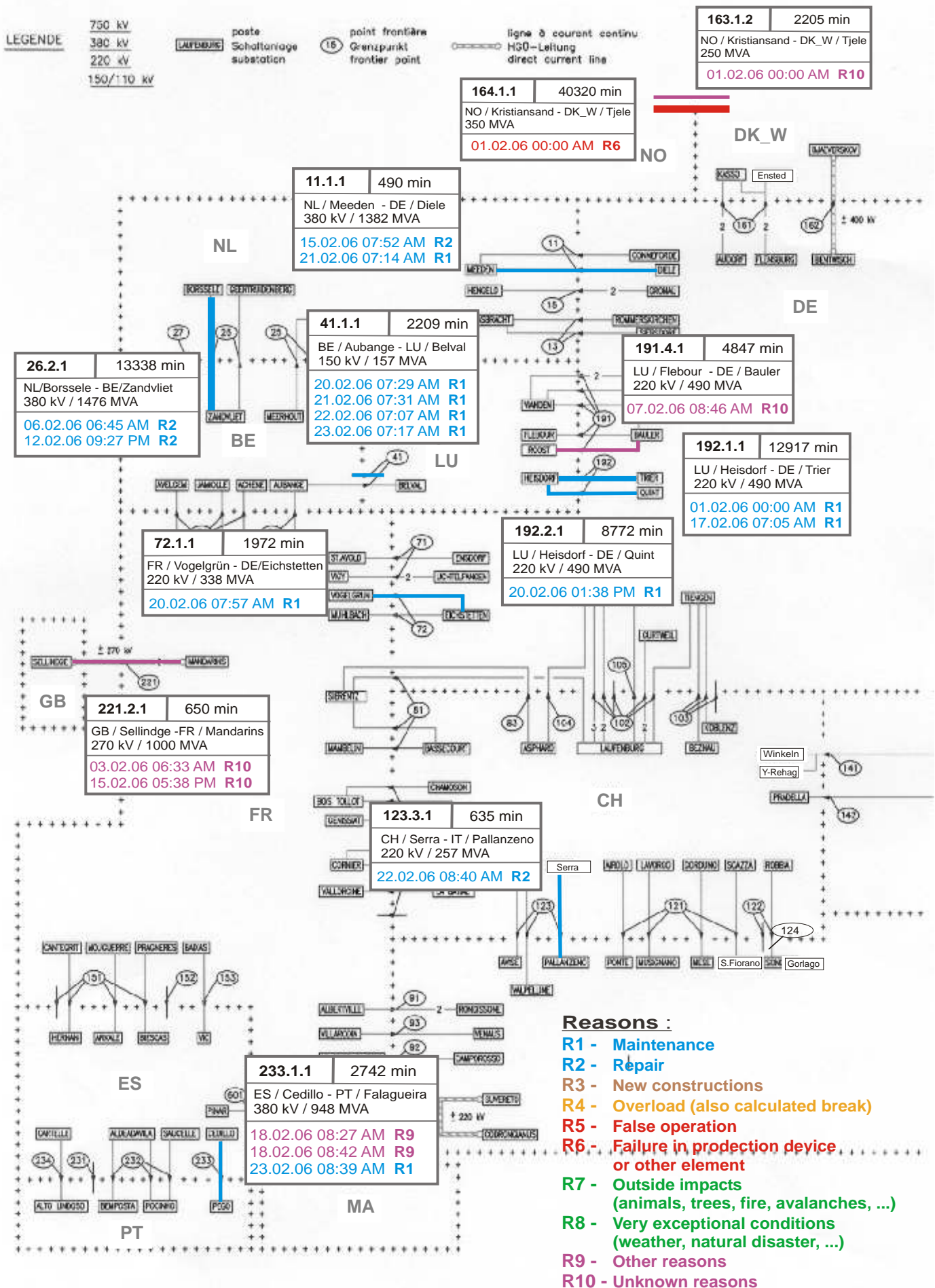
Associate member

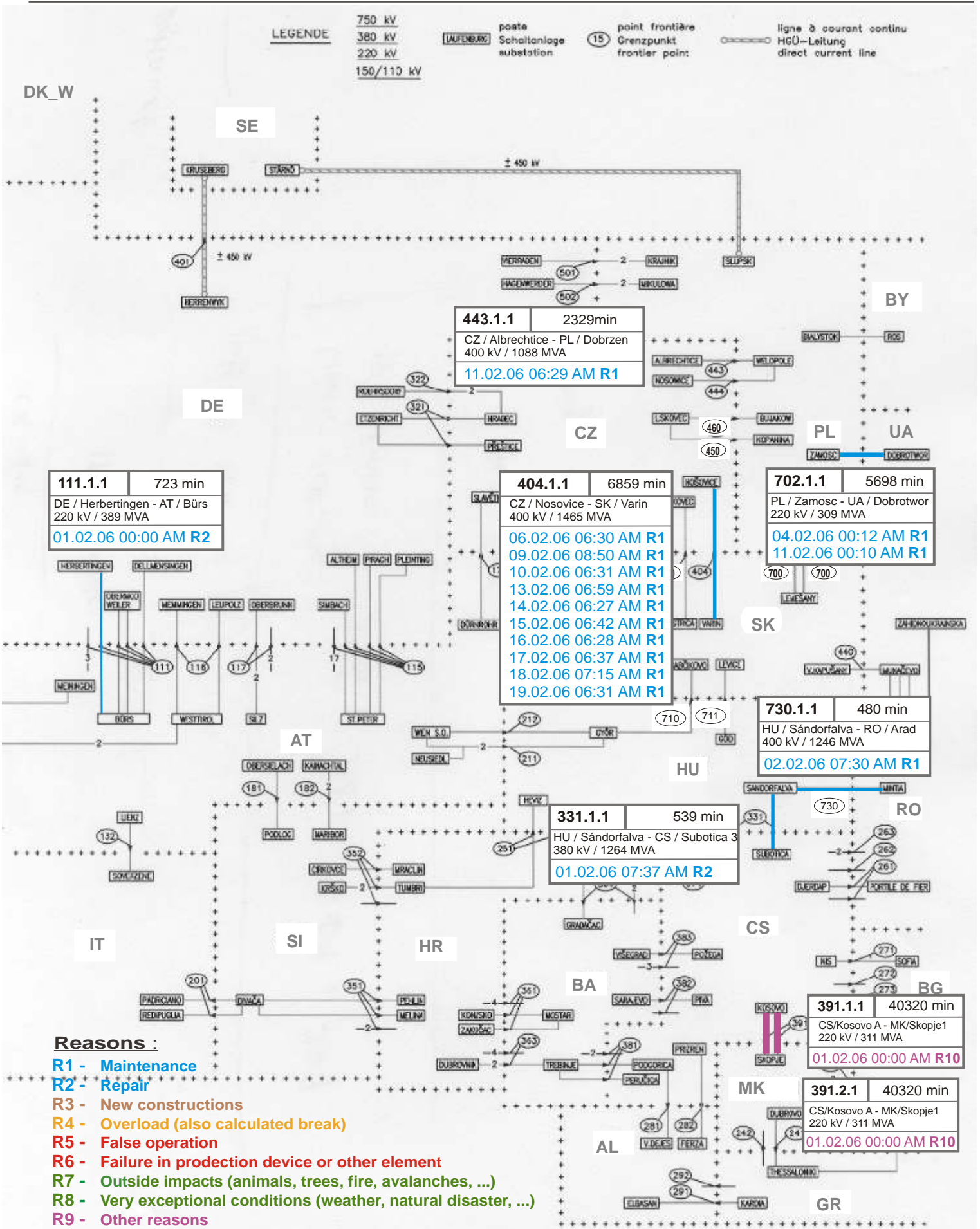
Synchronous operation with UCTE region

**Sum of load flows in MW:**

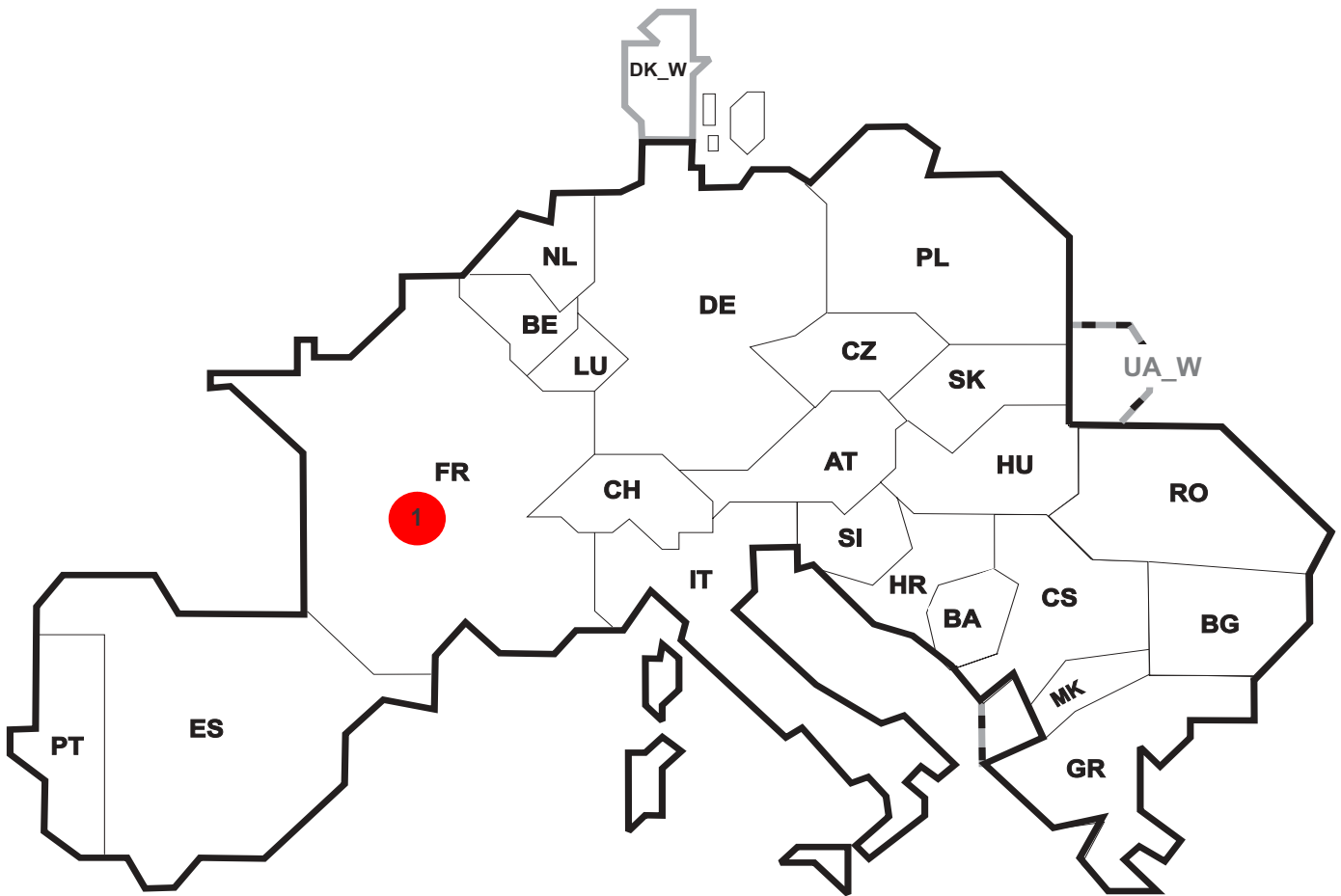
UCTE = 39220 MW  
 Total = 45074 MW

I = Import balance  
 E = Export balance









Reasons:

- R4** Overload (also calculated break)
- R5** False operation
- R6** Failure in protection device or other element
- R7** Outside impacts (animals, trees, fire, avalanches, ...)  
(animals, trees, fire, avalanches, ...)
- R8** Very exceptional conditions  
(weather, natural disaster, ...)
- R9** Other reasons
- R10** Unknown reasons

No	Country	Substation	Reason	Energy not supplied [ MWh ]	Total loss of power [ MW ]	Restoration time [ min ]	Equivalent time of interruption <sup>1</sup>
1	FR	Bollene Specialise	R6	532	18	1773	0,58

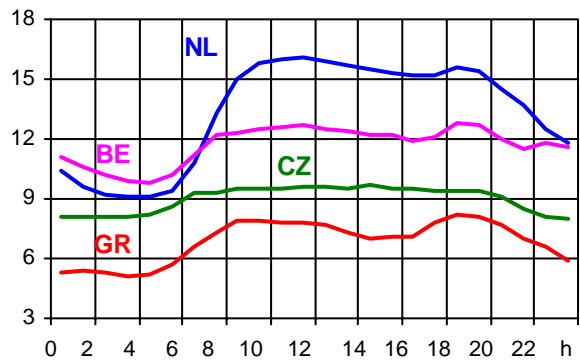
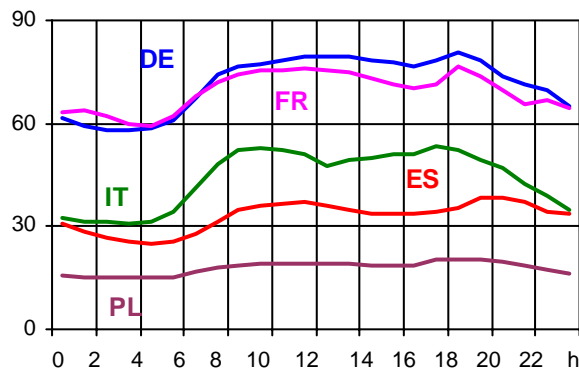
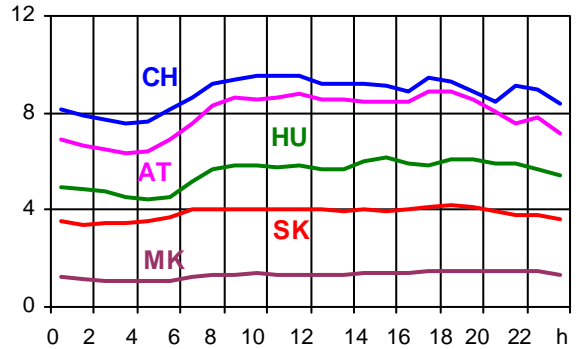
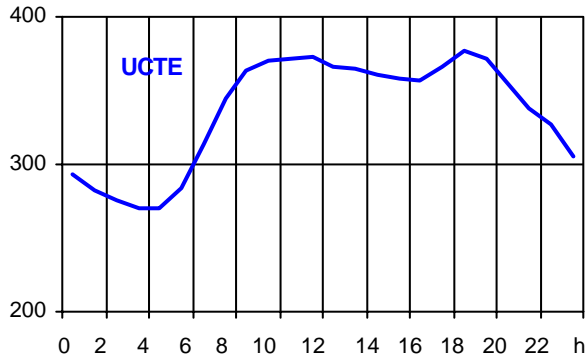
<sup>1</sup> ( year [in min] \* energy not supply ) / consumption last 12 months

Control area	Export Programs	Import Programs	Export Programs at 03:00	Import Programs at 03:00	Export Programs at 11:00	Import Programs at 11:00
AT	527123	886554	1235	774	1730	785
BA	287499	80005	436	133	465	84
BE	215293	868059	0	1297	636	1665
BG	n.a.	n.a.	n.a.	n.a.	n.a.	n.a.
CH	n.a.	n.a.	n.a.	n.a.	n.a.	n.a.
CS	574819	824733	745	1160	969	1523
CZ	1397687	559957	1961	711	2216	833
DE	5145467	1453957	7653	1993	6645	1994
ES	1028933	431661	1759	1365	876	746
FR	5547866	4719002	8238	7684	8662	6040
GR	48497	358568	0	547	0	481
HR	15602	697055	418	1136	418	1169
HU	433094	972684	780	1200	543	1724
IT	233588	2399344	562	1910	126	6802
MK	200	228800	61	334	45	387
NL	562259	1790603	1723	2193	227	2433
PL	1250290	98642	1767	165	2174	215
PT	73104	642778	0	1489	192	630
RO	616022	115244	662	188	1268	161
SI	563438	642908	833	958	844	943
SK	530121	309131	751	332	839	597
DK_W	826623	247077	1535	0	1300	49
UA_W	312890	0	423	0	494	0

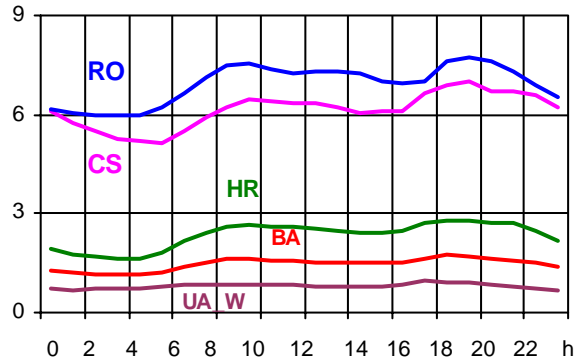
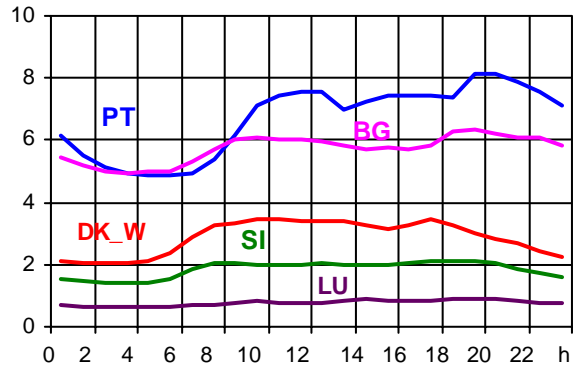
- Control areas can differ from national borders ( i.e. German block which includes parts of AT, LU and DK ).
- Values are calculated on an hourly base ( MWh ).
- This values are not the provisional values entered in the VULCANUS system, but the definitive values after an eventual correction during the actual date.
- Export Programs: Sum of all positive values of every hour of every border
- Import Programs: Sum of all negative values of every hour of every border
- Export Programs at 03:00: Sum of all positive values the third Wednesday from 02:00 to 03:00 a.m.
- Import Programs at 03:00: Sum of all negative values the third Wednesday from 02:00 to 03:00 a.m.
- Export Programs at 11:00: Sum of all positive values the third Wednesday from 10:00 to 11:00 a.m.
- Import Programs at 11:00: Sum of all negative values the third Wednesday from 10:00 to 11:00 a.m.

Consumption hourly load curves on 15.02.2006

Values in GWh



	Peak load		Load representativity %	Parallel power <sup>2</sup> MW
	MW	var.% <sup>1</sup>		
AT	8914	-14,3	100	7871
BA	1730	-1,8	100	1931
BE	12798	-0,7	100	11364
BG	6340	14,0	100	6041
CH	9535	0,4	100	11003
CS	7013	0,0	100	5909
CZ	9690	1,2	100	11538
DE	80751	-2,2	91	78300
ES	38394	-3,6	98	36103
FR	76442	-3,3	100	78325
GR	8168	11,4	100	7368
HR	2800	4,0	100	2123
HU	6131	3,6	100	4628
IT	53231	2,9	100	45555
LU	921	7,6	100	773
MK	1104	-13,0	100	1010
NL	16125	-1,9	100	13764
PL <sup>3</sup>	20402	2,2	100	24913
PT	8136	-0,1	96	6751
RO	7717	-0,4	100	8389
SI	2124	5,5	95	1789
SK	4180	1,8	100	4175
<b>UCTE</b>	<b>377247</b>	<b>-1,0</b>		<b>369623</b>
DK_W	3469	-2,8	100	4876
UA_W	944	-1,4	100	1339



<sup>1</sup> Variation as compared to corresponding month of the previous year

<sup>2</sup> Power produced in parallel operation (including autoproduction)

<sup>3</sup> Average value of each hour



## Contact

Boulevard Saint-Michel, 15  
B-1040 Brussels – Belgium  
Tel +32 2 741 69 40 – Fax +32 2 741 69 49

[info@ucte.org](mailto:info@ucte.org)  
[www.ucte.org](http://www.ucte.org)