

UCTE



February 2005

Monthly provisional values
union for the co-ordination of transmission of electricity

Table of contents ¹		Page
1	Electricity supply situation of the countries	2
2	Physical energy flows	3
3	Monthly consumption	4
4	Monthly consumption variation	6
5	Consumption of the last 12 months	8
6	Variation of the last 12 months' consumption	9
7	Load flows (night)	10
8	Load flows (day)	11
9	Unavailability of international tie lines (major events)	12
10	Network reliability (major events)	14
11	Scheduled exchanges	15
12	Load on the 3 rd Wednesday	16

¹ Monthly provisional values from the UCTE database as of 03 June 2005

1

Electricity supply situation of the countries

February 2005

All values are calculated to represent 100% of the national values

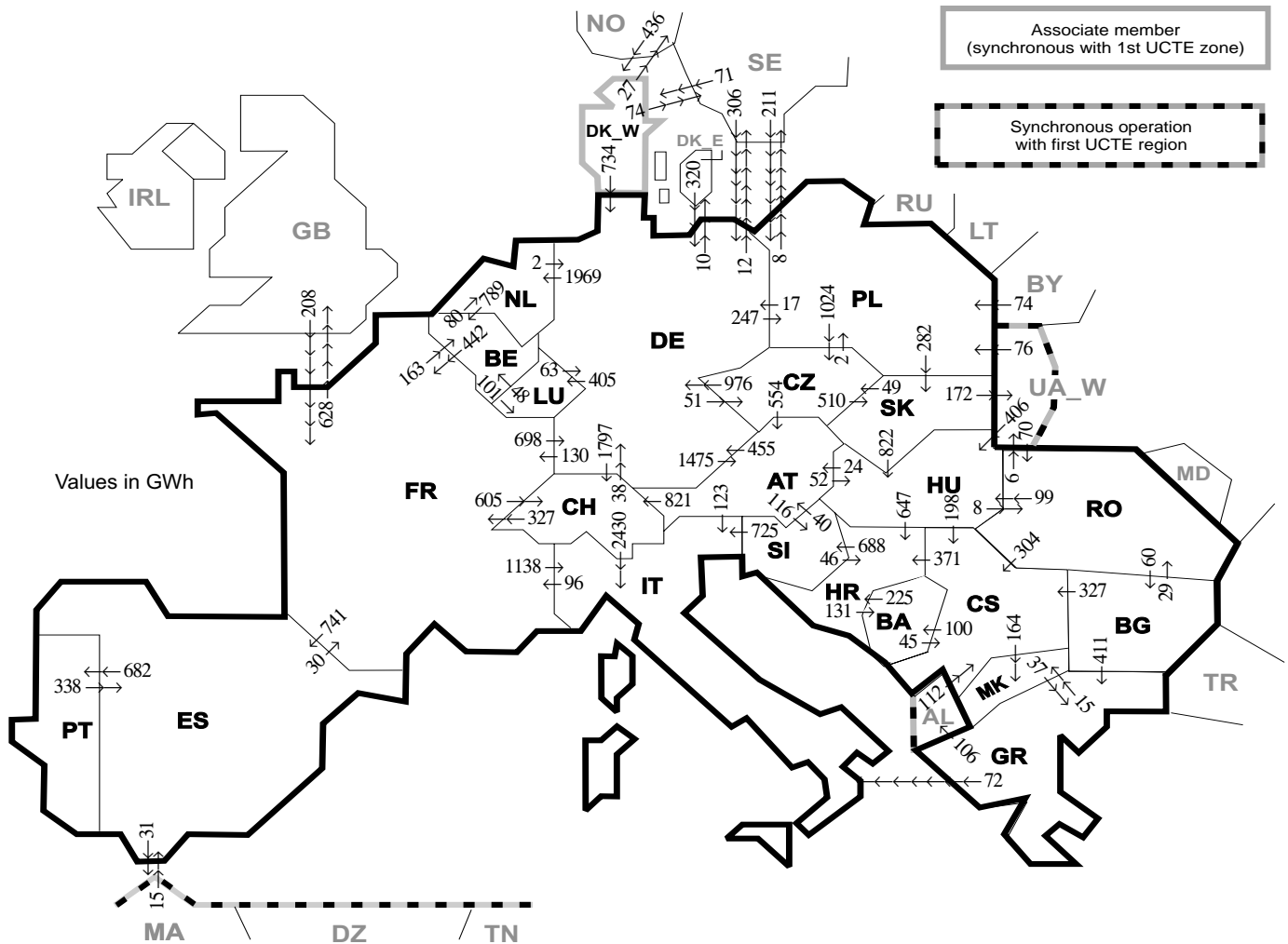
Countries	Net production in GWh							Exchange balance in GWh	Pump in GWh	Consumption in GWh			
	Therm. nuclear	Fossil fuel	Hydro prod	Other renew.	Of which wind	Not identify	Total			monthly	var. [%]	last 12 months	var. [%]
AT	0	2520	2240	n.a.	n.a.	n.a.	4760	465	174	5051	-13,5	65620	7,3
BA	0	561	491	0	0	0	1052	-69	0	983	6,5	10727	-12,5
BE	3899	3138	154	90	12	0	7281 ¹	387	147	7521	-0,5	88238	1,9
BG	1889	1859	423	0	0	0	4171	-713	38	3420	-1,1	34931	-3,3
CH	2179	193	2753	82	1	0	5207 ¹	437	53	5591	3,0	62112	4,4
CS	0	2655	1215	0	0	0	3870 ¹	350	73	4147	1,2	41309	1,4
CZ	2287	4150	288	3	1	0	6728 ¹	-918	68	5742	3,0	61498	2,6
DE	13483	33321	1744	3995	3328	0	52543 ¹	-2487	672	49384	4,4	550869	1,6
ES	4881	10823	1859	2017	1817	0	19580 ¹	300	433	19447	-6,5	254681	6,2
FR	36436	7242	5352	323	73	0	49353	2916	449	51820	18,1	485586	3,9
GR	0	3407	480	97	88	0	3984 ¹	255	42	4197	3,0	51406	-3,5
HR	0	585	474	2	1	0	1061 ¹	462	23	1500	3,6	16026	3,1
HU	883	1825	16	n.a.	n.a.	n.a.	2724 ¹	501	0	3225	-0,9	38141	-0,7
IT	0	19457	3108	540	161	0	23105	4392	823	26674	0,5	322092	0,2
LU	0	88	74	8	4	0	170	396	86	480	-11,2	6304	1,4
MK	0	456	192	0	0	0	648 ¹	142	0	790	9,6	7482	2,4
NL	305	6943	0	537	214	0	7785 ¹	1257	0	9042	-4,1	110459	0,4
PL	0	11797	258	n.a.	n.a.	n.a.	12055 ¹	-723	161	11171	-1,4	129685	-5,1
PT	0	3175	468	240	113	0	3883 ¹	358	56	4185	6,9	48193	3,0
RO	383	3300	1250	0	0	0	4933 ¹	-363	0	4570	3,9	51032	2,7
SI	447	479	126	0	0	0	1052	-9	0	1043	-4,3	13273	1,8
SK	1491	541	330	0	0	243	2605 ¹	-251	4	2350	-1,8	26162	-0,9
UCTE	68563	118515	23295	7934	5813	243	218550¹	7085	3302	222333	3,9	2475826	1,9
DK_W	0	1563	3	583	482	0	2149 ¹	-329	0	1820	0,9	21074	n.a.
UA_W ²	0	729	6	0	0	0	735 ¹	-297	0	438	-0,7	4412	6,4

¹ Including deliveries from industry

² UA_W represents the so-called Burshtyn Island synchronously interconnected with UCTE

All representativities of the national production and consumption values used to calculate values at a representativity of 100% as stated in the table above

Countries	AT	BA	BE	BG	CH	CS	CZ	DE	ES	FR	GR	HR	HU	IT	LU	MK	NL	PL	PT	RO	SI	SK	DK_W	UA_W ²
Production																								
Therm.nuclear	100	100	100	100	100	100	100	100	100	100	100	100	100	100	100	100	100	100	100	100	100	100	100	100
Fossil fuel	100	100	100	100	100	100	100	100	100	100	100	100	100	100	98	100	100	100	96	100	100	100	100	100
Hydro prod	100	100	100	100	100	100	100	100	100	100	100	100	100	100	99	100	100	100	100	100	100	100	100	100
Other renew.	n.a.	100	100	100	100	100	100	100	100	100	100	100	n.a.	100	98	100	100	n.a.	100	100	100	100	100	100
Not identify	n.a.	100	100	100	100	100	100	100	100	100	100	100	n.a.	100	n.a.	100	100	n.a.	100	100	100	100	100	100
Consumption	90	100	100	100	100	100	100	100	98	100	100	100	100	100	99	100	100	100	94	100	95	100	100	100



Exporting countries	Importing countries																			Sum export							
	AT	BA	BE	BG	CH	CS	CZ	DE	ES	FR	GR	HR	HU	IT	LU	MK	NL	PL	PT		RO	SI	SK	DK_W	UA_W ²	Other III ¹	
AT	-	-	-	-	821	-	0	455	-	-	-	-	52	123	-	-	-	-	-	-	116	-	-	-	-	1567	
BA	-	-	-	-	-	45	-	-	-	-	-	225	-	-	-	-	-	-	-	-	-	-	-	-	-	270	
BE	-	-	-	-	-	-	-	-	-	442	-	-	-	-	101	-	80	-	-	-	-	-	-	-	-	623	
BG	-	-	-	-	-	327	-	-	-	-	411	-	-	-	0	-	-	-	-	29	-	-	-	-	0	767	
CH	0	-	-	-	-	-	38	-	327	-	-	-	2430	-	-	-	-	-	-	-	-	-	-	-	-	2795	
CS	-	100	-	0	-	-	-	-	-	-	-	-	-	-	-	164	-	-	-	0	-	-	-	-	-	635	
CZ	554	-	-	-	-	-	-	976	-	-	-	-	-	-	-	-	2	-	-	-	510	-	-	-	-	2042	
DE	1475	-	-	-	1797	-	51	-	130	-	-	-	-	405	-	1969	247	-	-	-	-	0	-	-	22	6096	
ES	-	-	-	-	-	-	-	-	30	-	-	-	-	-	-	-	-	682	-	-	-	-	-	-	31	743	
FR	-	-	163	-	605	-	-	698	741	-	-	-	-	1138	-	-	-	-	-	-	-	-	-	-	628	3973	
GR	-	-	-	0	-	-	-	-	-	-	-	-	-	72	15	-	-	-	-	-	-	-	-	-	-	106	193
HR	-	131	-	-	-	-	-	-	-	-	-	0	-	-	-	-	-	-	-	688	-	-	-	-	-	819	
HU	24	-	-	-	-	198	-	-	-	-	-	647	-	-	-	-	-	-	-	8	0	0	-	-	-	877	
IT	0	-	-	-	0	-	-	-	-	96	0	-	-	-	-	-	-	-	-	-	0	-	-	-	-	96	
LU	-	-	48	-	-	-	63	-	-	-	-	-	-	-	-	-	-	-	-	-	-	-	-	-	-	111	
MK	-	-	-	0	-	0	-	-	-	-	37	-	-	-	-	-	-	-	-	-	-	-	-	-	-	37	
NL	-	-	789	-	-	-	-	-	2	-	-	-	-	-	-	-	-	-	-	-	-	-	-	-	-	791	
PL	-	-	-	-	-	-	1024	17	-	-	-	-	-	-	-	-	-	-	-	-	-	-	-	0	8	1331	
PT	-	-	-	-	-	-	-	-	338	-	-	-	-	-	-	-	-	-	-	-	-	-	-	-	-	338	
RO	-	-	-	60	-	304	-	-	-	-	-	-	99	-	-	-	-	-	-	-	-	-	-	6	0	469	
SI	40	-	-	-	-	-	-	-	-	-	46	725	-	-	-	-	-	-	-	-	-	-	-	-	-	811	
SK	-	-	-	-	-	49	-	-	-	-	-	822	-	-	-	-	-	0	-	-	-	-	-	172	-	1043	
DK_W	-	-	-	-	-	-	734	-	-	-	-	-	-	-	-	-	-	-	-	-	-	-	-	-	101	835	
UA_W ²	-	-	-	-	-	-	-	-	-	-	-	-	-	-	-	-	76	-	70	0	0	-	-	-	-	552	
Other III ¹	-	-	-	0	112	-	626	15	208	0	-	-	-	-	-	-	285	-	0	-	507	-	-	-	-	1753	
Sum imp	2093	231	1000	60	3223	986	1124	3609	1094	1233	448	1289	1379	4488	506	179	2049	610	682	107	804	792	507	178	896	29567	

Sum of physical energy flows between UCTE countries = 25454GWh Total physical energy flows = 29567GWh

¹ Other III: Albania, Belarus, Denmark East, Great Britain, Morocco, Republic of Moldavia, Norway, Sweden and Republic of Turkey

² UA_W represents the so-called Burshtyn Island synchronously interconnected with UCTE

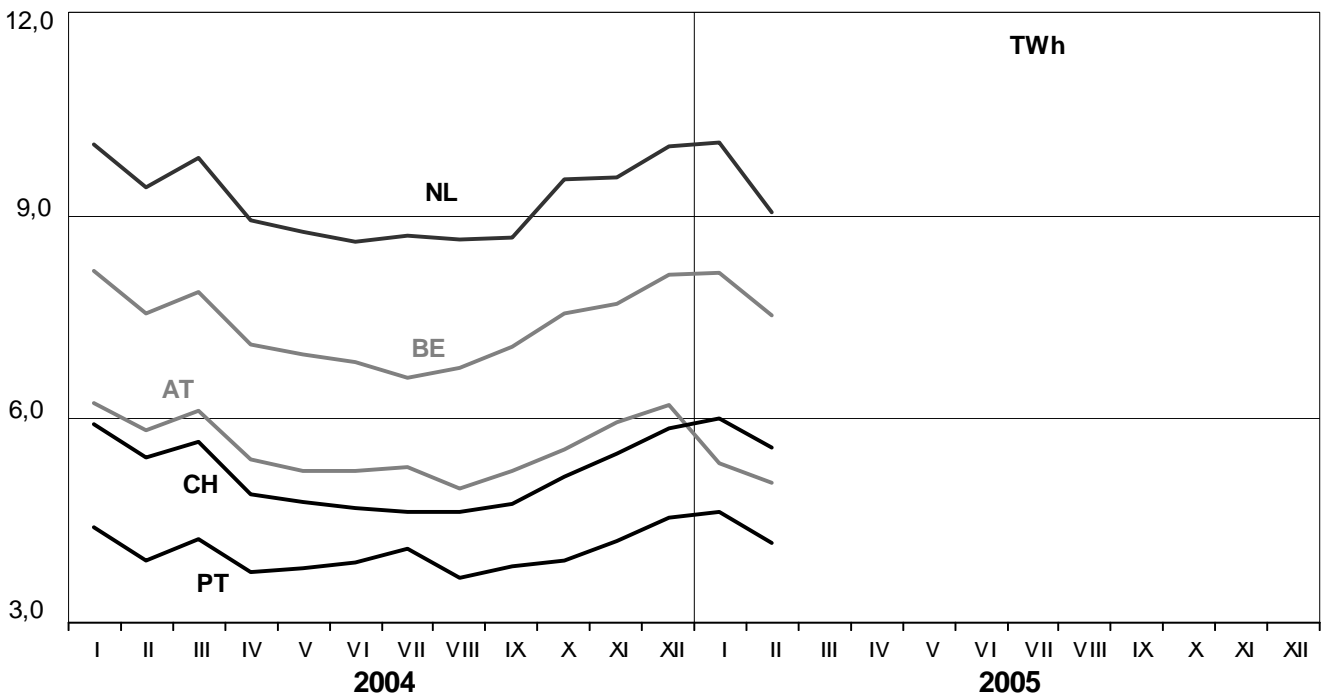
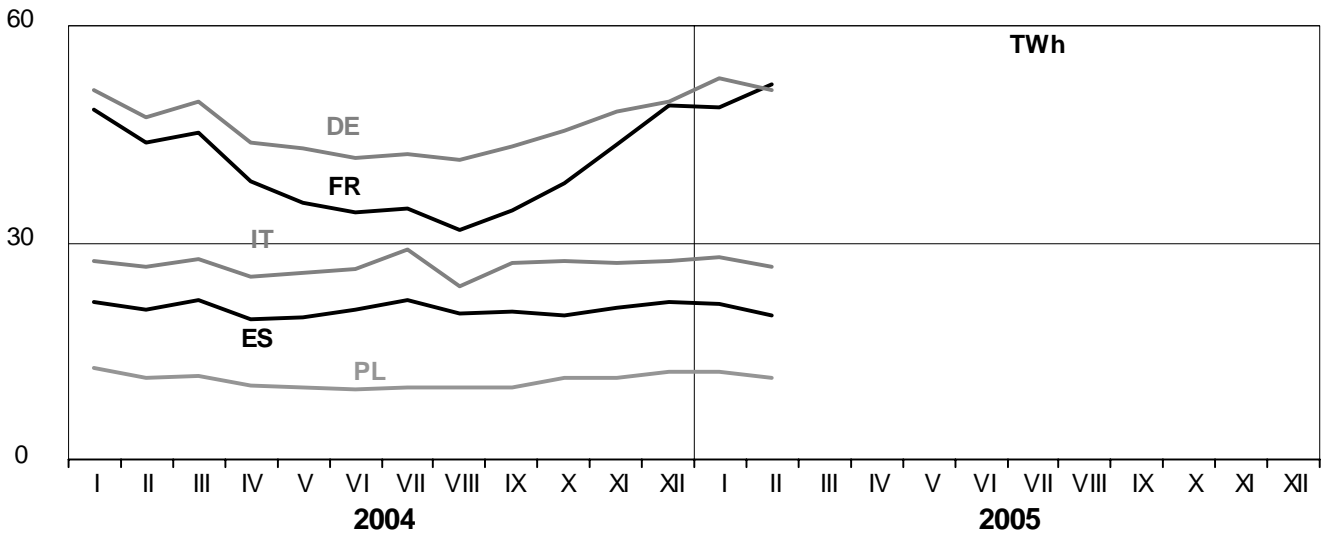
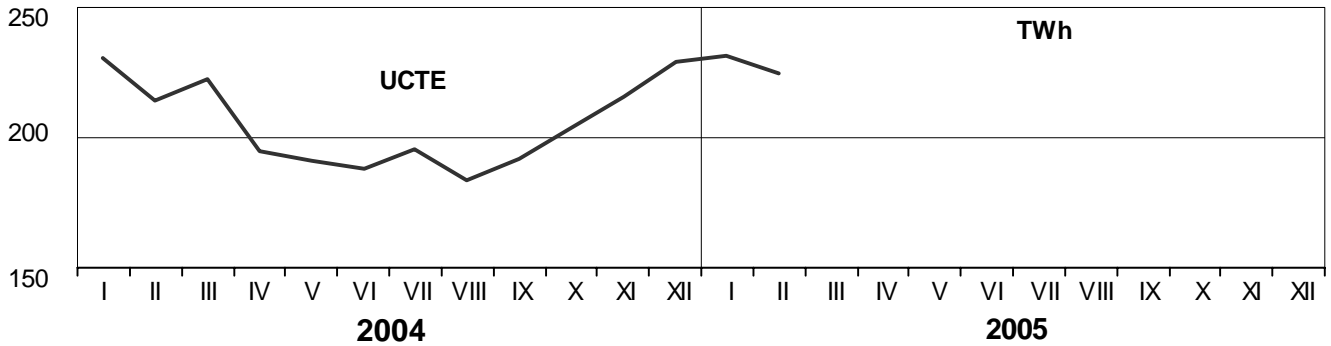
These physical energy flows were measured on the cross-frontier transmission lines (< 110 kV) listed in table 9 of the Statistical Yearbook. These values may differ from the official statistics and the exchange balances in chapter 1.

3

Monthly consumption

February 2005

All values are calculated to represent 100% of the national values

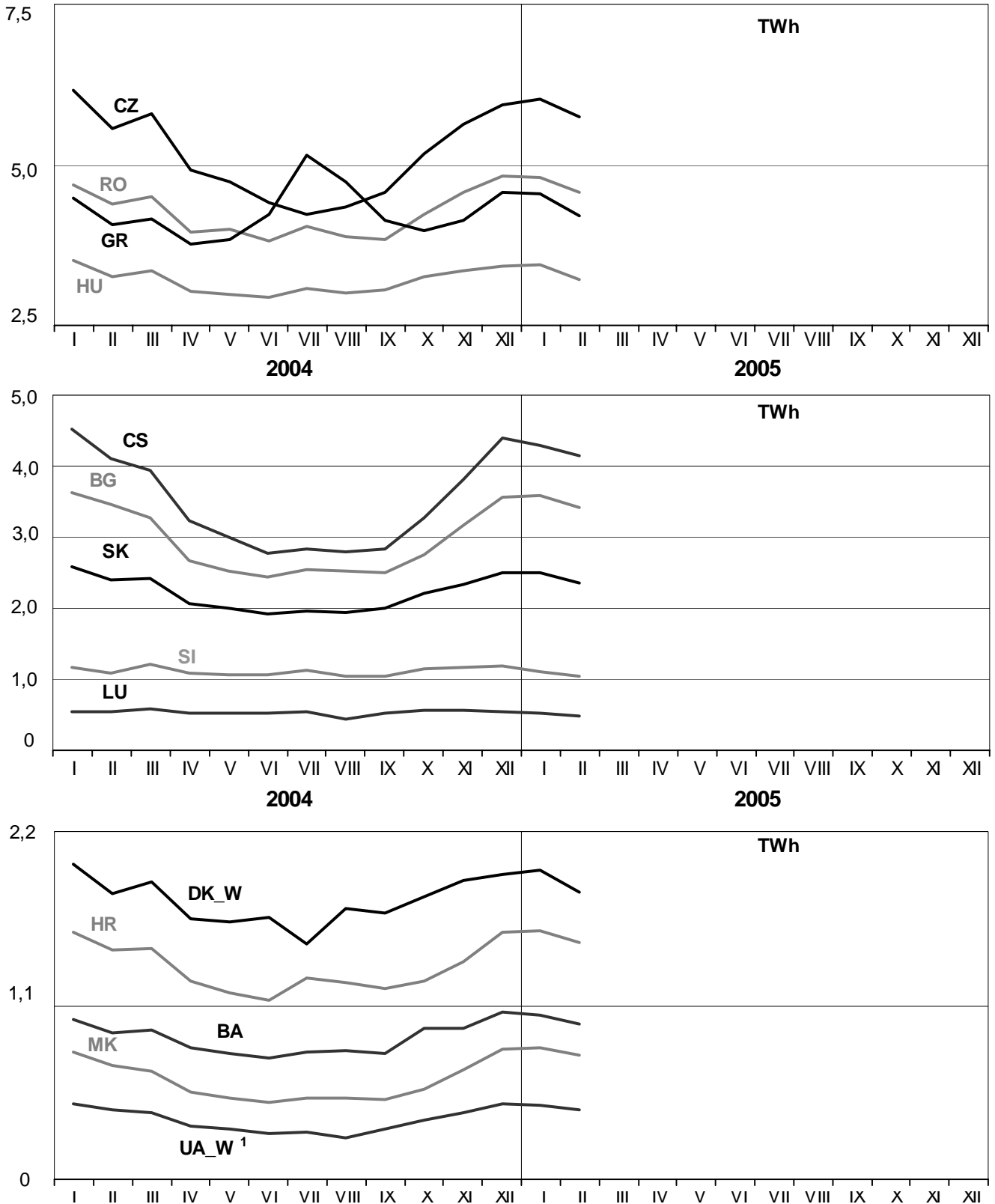


3

Monthly consumption

February 2005

All values are calculated to represent 100% of the national values



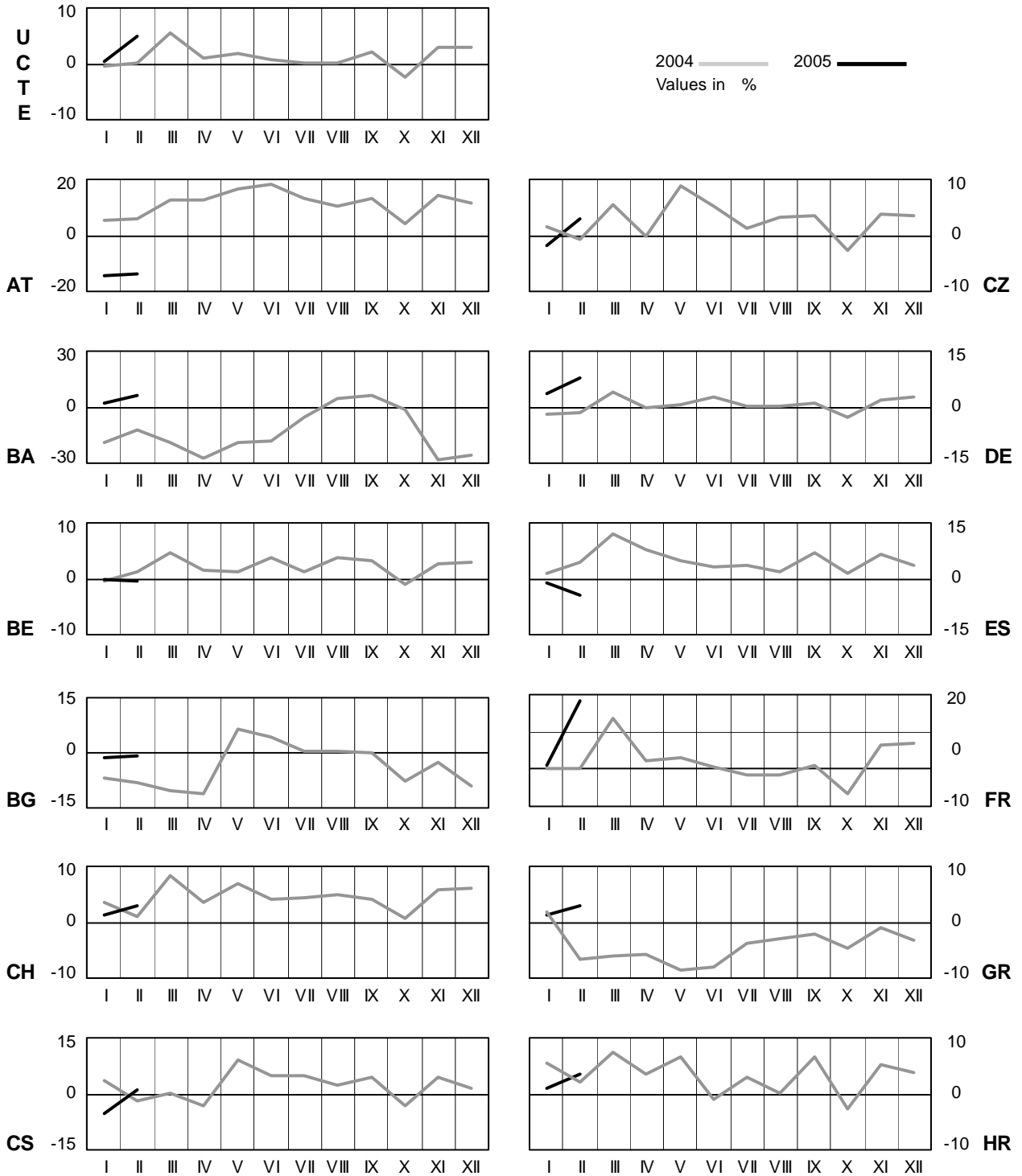
¹ UA_W represents the so-called Burshtyn Island synchronously interconnected with UCTE

4

Monthly consumption variation

February 2005

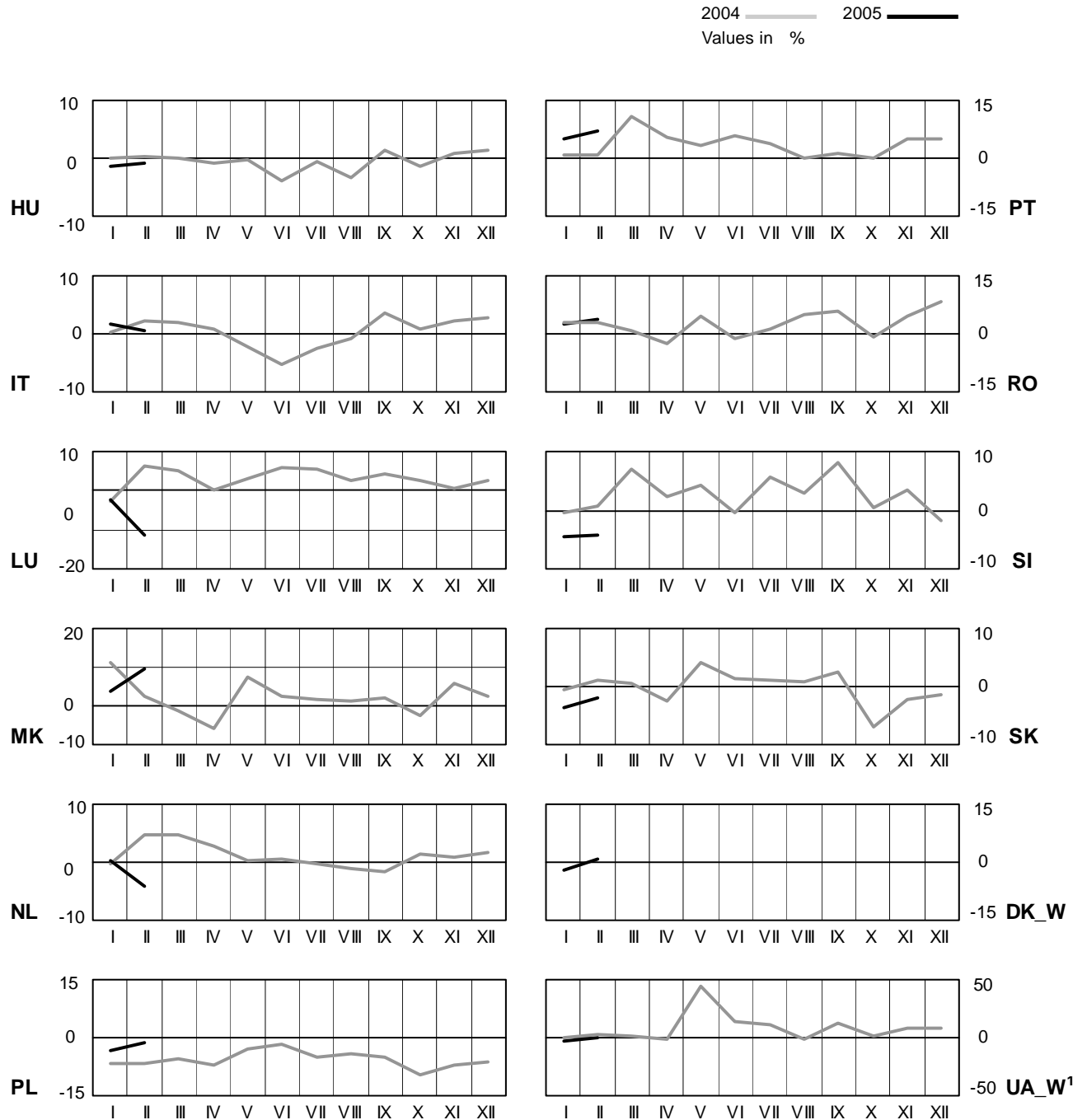
All values are calculated to represent 100% of the national values



4 Monthly consumption variation

February 2005

All values are calculated to represent 100% of the national values



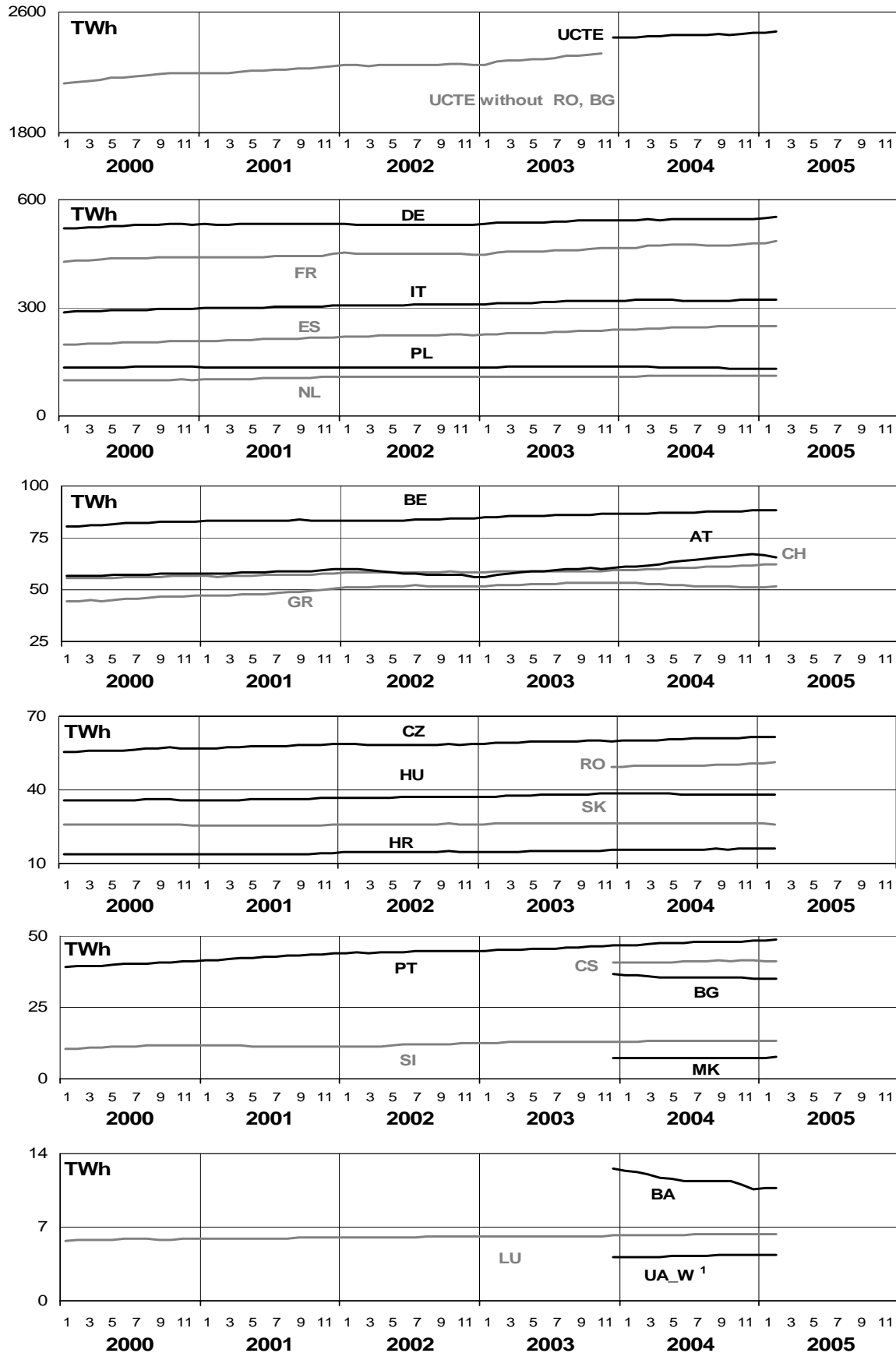
¹ UA_W represents the so-called Burshtyn Island synchronously interconnected with UCTE

5

Consumption of the last 12 months

February 2005

All values are calculated to represent 100% of the national values



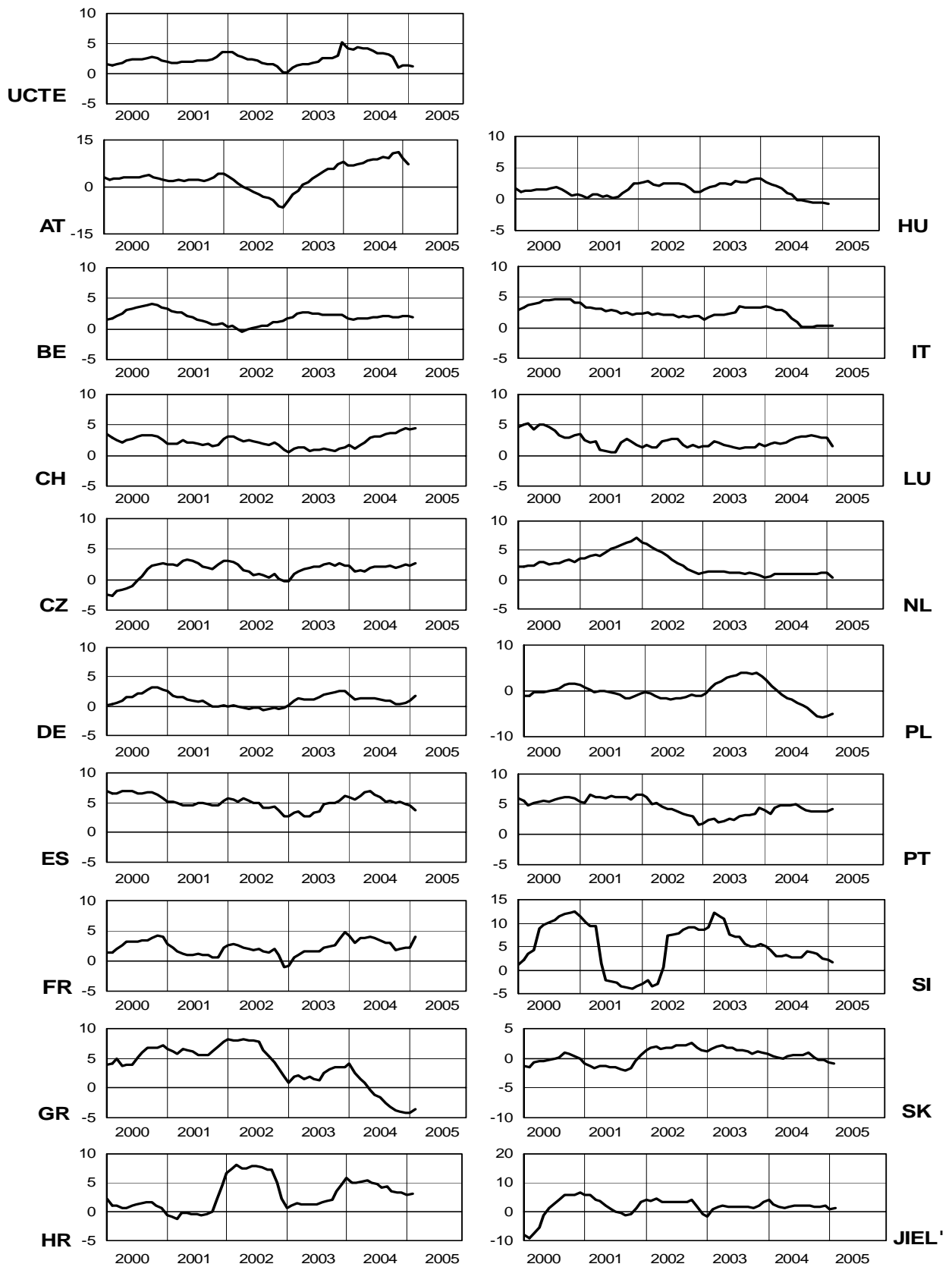
¹ UA_W represents the so-called Burshtyn Island synchronously interconnected with UCTE

6

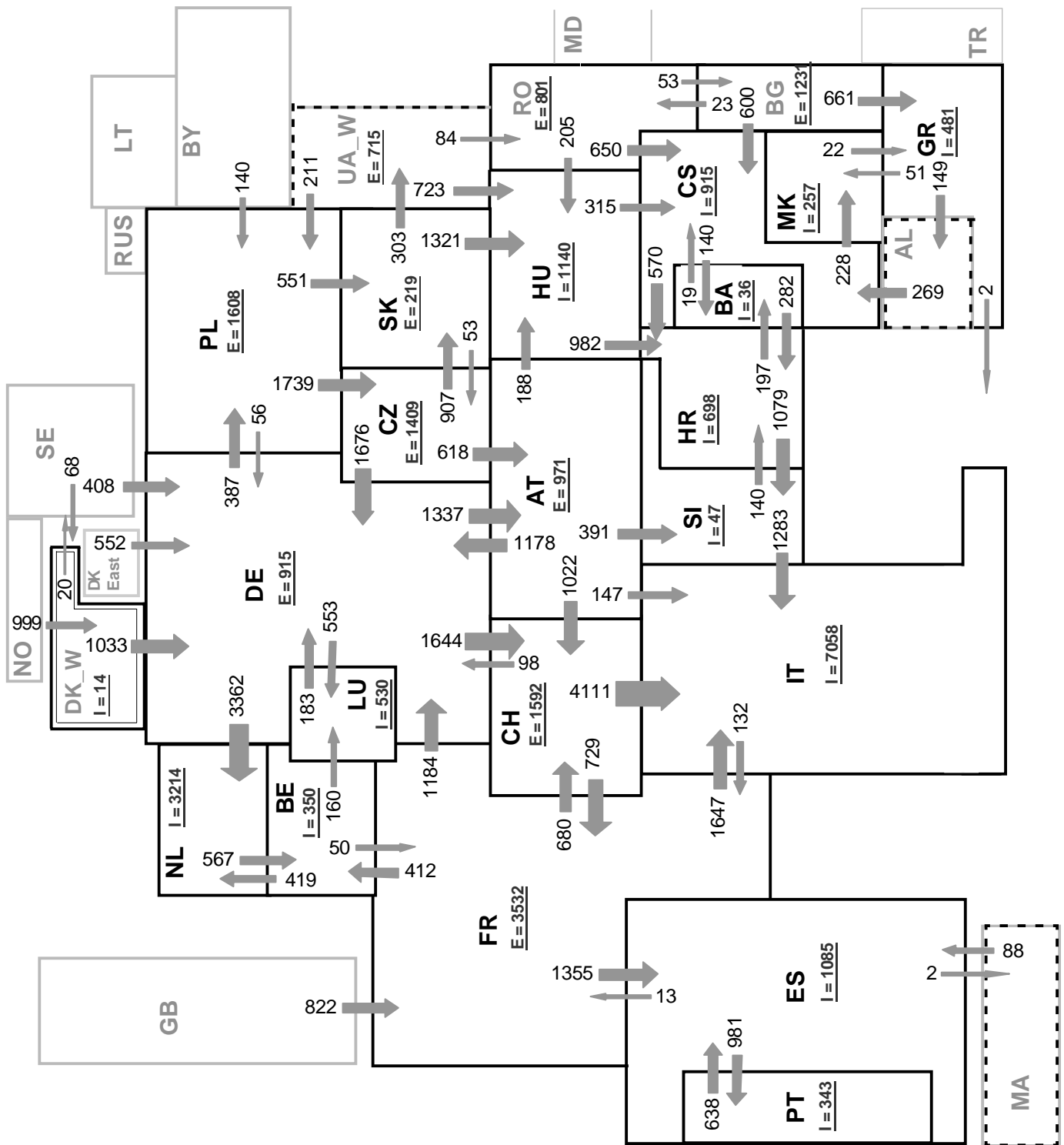
Variation of the last 12 months' consumption in %

February 2005

All values are calculated to represent 100% of the national values



¹ JIEL = FRY + FYROM (Federal Republic of Yugoslavia and former Yugoslav Republic of Macedonia)



Associate member

Synchronous operation with first region

Sum of load flows in MW:

UCTE = 37991MW Total = 43862MW

* Central European Time (CET)

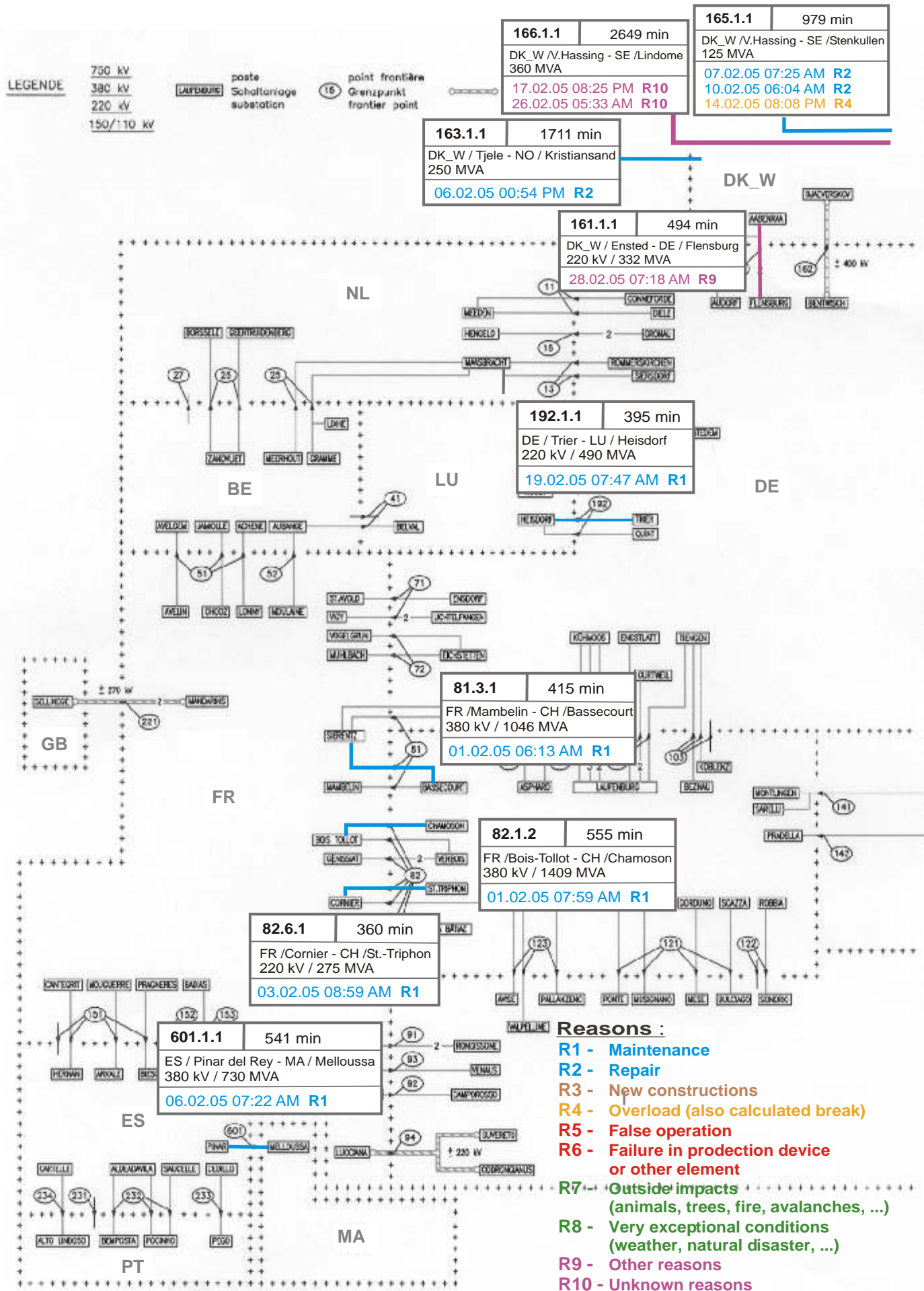
I = Import balance

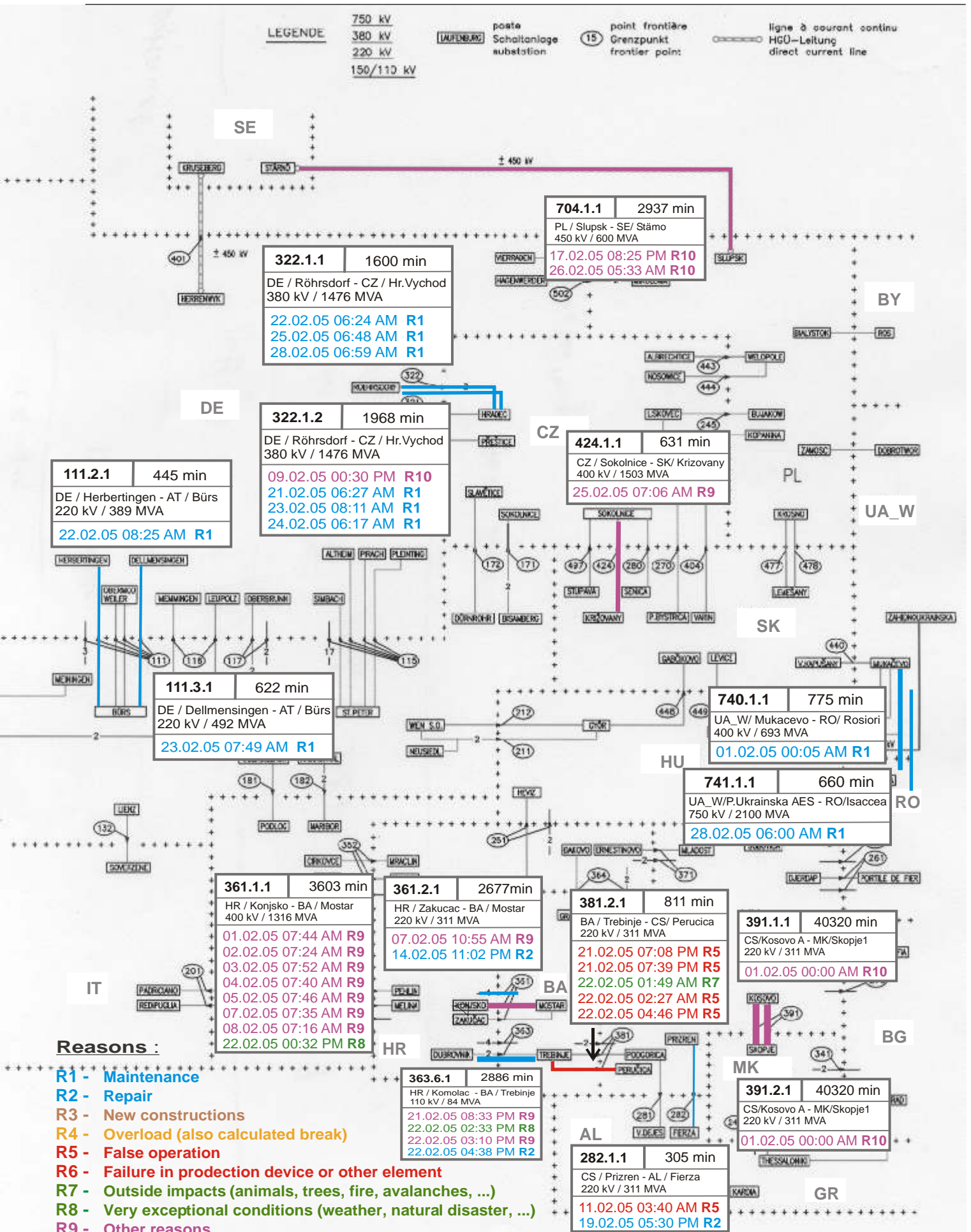
E = Export balance

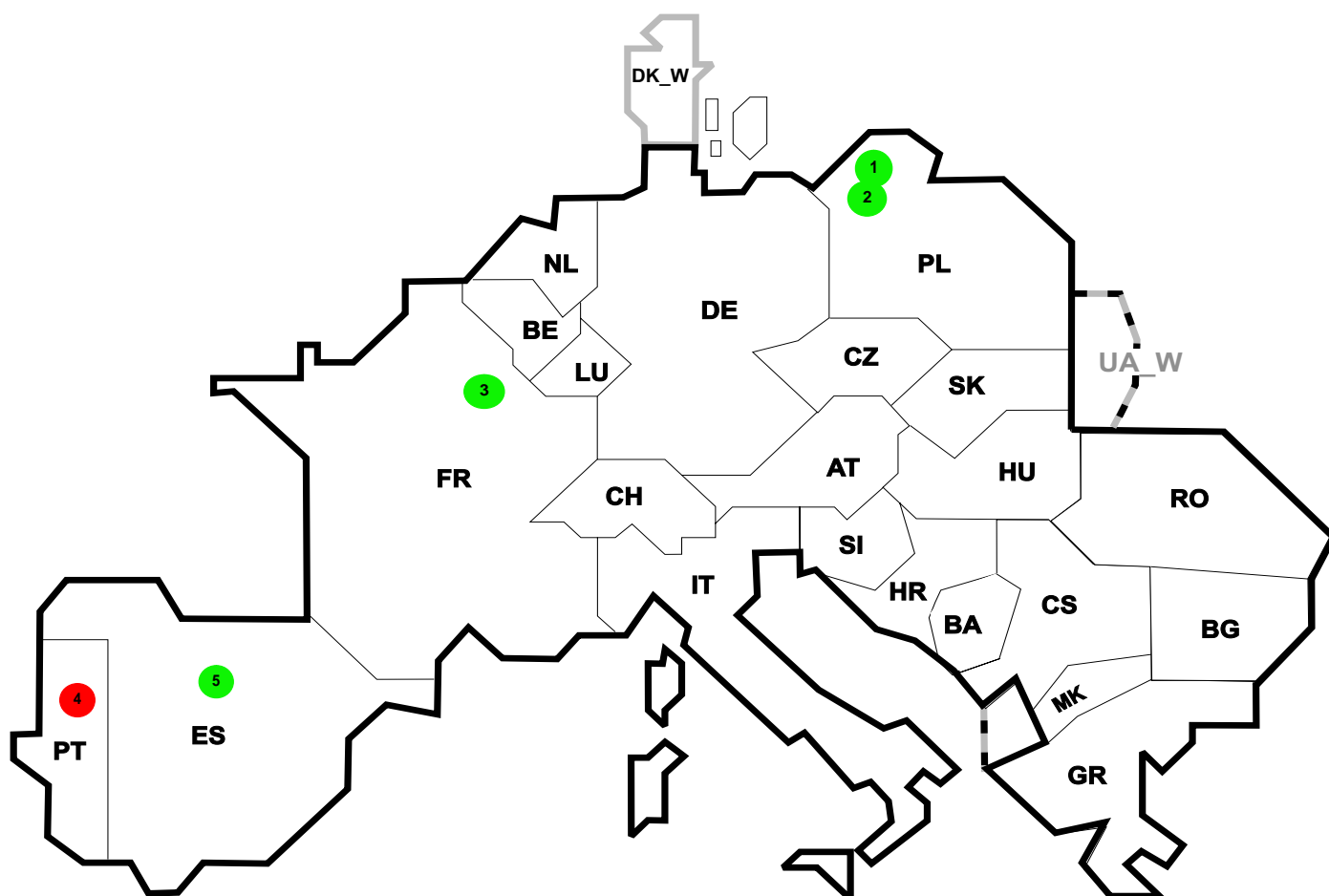
9

Unavailability of international tie lines (major events with sum over 300 minutes)

February 2005







Reasons:

R4 Overload (also calculated break)

R5 False operation

R6 Failure in protection device or other element

R7 Outside impacts (animals, trees, fire, avalanches, ...)
(animals, trees, fire, avalanches, ...)

R8 Very exceptional conditions
(weather, natural disaster, ...)

R9 Other reasons

R10 Unknown reasons

Nbr	Country	Substation	Reason	Energy not supplied [MWh]	Total loss of power [MW]	Restoration time [min]	Equivalent time of interruption ¹
1	PL	Slupsk	R7	522	550	2910	2,12
2	PL	Slupsk	R8	330	550	36	1,34
3	FR	Grande Synthe	R8	71	54	81	0,08
4	PT	Valdigem	R6	32	0	15	0,35
5	ES	Fuencarral	R7	28	0	60	0,35

¹ (year [in min] * energy not supply) / consumption last 12 months

Control area	Export Programs	Import Programs	Export Programs at 03:00	Import Programs at 03:00	Export Programs at 11:00	Import Programs at 11:00
AT	522247	855397	1179	945	1235	1479
BA	160887	106917	164	300	164	274
BG	n.a.	n.a.	n.a.	n.a.	n.a.	n.a.
BE	563420	995269	917	1343	1118	1616
CH	2295890	2734303	2467	4935	3854	2253
CS	434842	793198	426	1174	546	1502
CZ	1814222	858954	2705	1289	2880	1438
DE	5333142	2155925	7227	2615	7090	4727
ES	605060	929602	2095	501	1334	2401
FR	6788929	4040444	7801	5800	8428	4903
GR	76096	328776	0	459	40	494
HR	110110	575324	0	757	0	727
HU	447061	948194	967	1282	522	1650
IT	96498	4488460	219	5650	132	7190
NL	426078	1679857	750	1875	5	3205
MK	37200	180000	5	130	18	268
PL	1072025	346792	1488	225	1892	225
PT	148654	507980	0	1218	961	1311
RO	493710	130208	485	253	960	164
SI	627007	626719	717	719	823	872
SK	624774	341697	1051	395	1011	730
DK_W	814181	480396	1200	496	1016	1460
UA_W ¹	295824	0	434	0	492	0

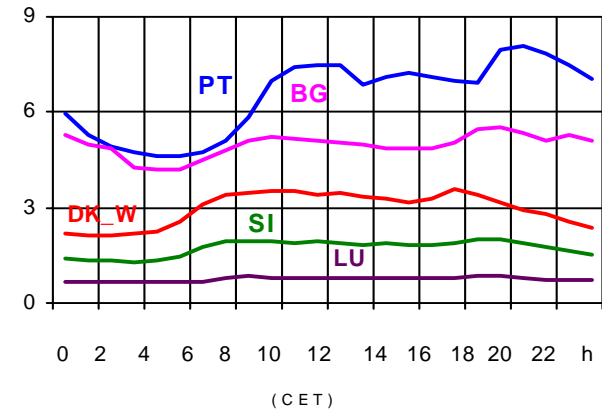
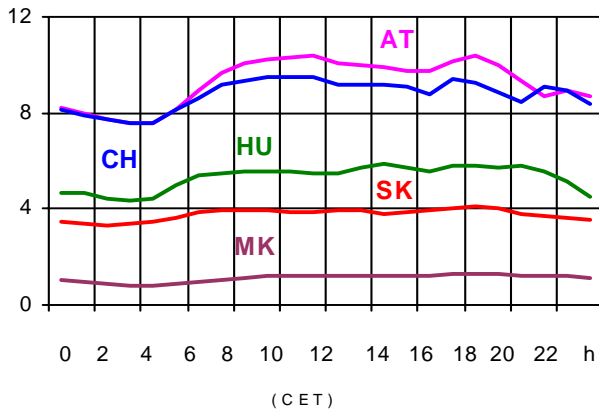
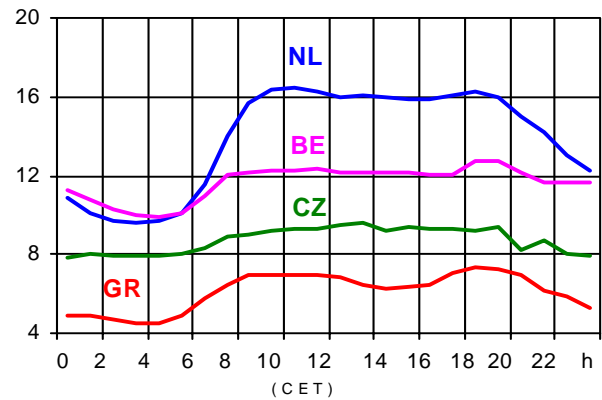
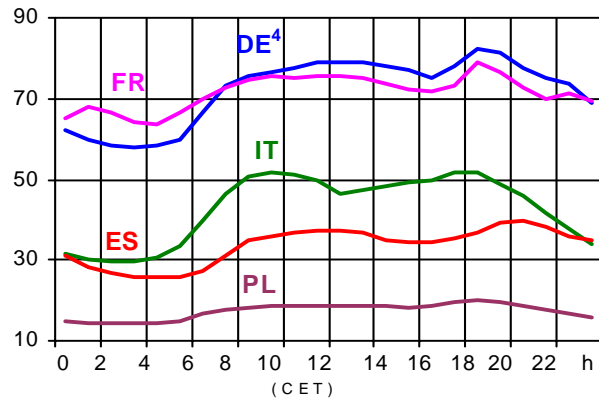
- Control areas can differ from national borders (i.e. German block which includes parts of AT, LU and DK).
- Values are calculated on an hourly base (MWh).
- This values are not the provisional values entered in the VULCANUS system, but the definitive values after an eventual correction during the actual date.
- Export Programs: Sum of all positive values of every hour of every border
- Import Programs: Sum of all negative values of every hour of every border
- Export Programs at 03:00: Sum of all positive values the third Wednesday from 02:00 to 03:00 a.m.
- Import Programs at 03:00: Sum of all negative values the third Wednesday from 02:00 to 03:00 a.m.
- Export Programs at 11:00: Sum of all positive values the third Wednesday from 10:00 to 11:00 a.m.
- Import Programs at 11:00: Sum of all negative values the third Wednesday from 10:00 to 11:00 a.m.

¹ UA_W represents the so-called Burshtyn Island synchronously interconnected with UCTE

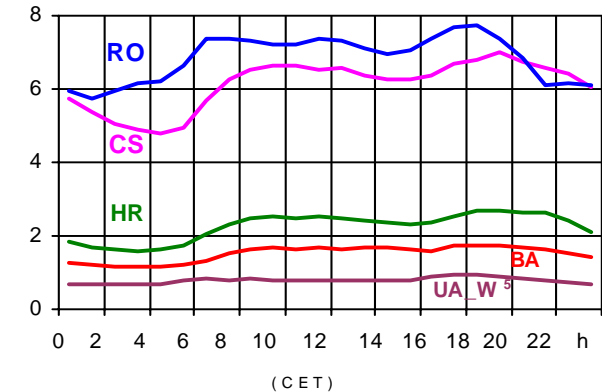
All values are calculated to represent 100% of the national values

Consumption hourly load curves¹ on 16.02.2005

Values in GW



	Peak load MW	var.% ²	Load representativity ¹ %	Parallel power ³ MW
AT	10402	2,4	82	8628
BA	1762	5,3	100	1615
BE	12728	3,4	100	11739
BG	5563	-4,5	100	6390
CH	9500	5,1	100	10969
CS	7010	0,8	100	5719
CZ	9576	5,4	100	11399
DE ⁴	82527	3,4	91	77500
ES	39827	6,5	98	36032
FR	79074	11,1	100	78960
GR	7333	-4,4	100	6465
HR	2692	3,5	100	1820
HU	5919	2,3	100	4432
IT	51748	3,0	100	43692
LU	856	-8,8	99	812
MK	1269	2,2	100	927
NL	16439	11,7	100	13026
PL	19970	0,5	100	20677
PT	8064	5,1	97	6830
RO	7748	6,6	100	7235
SI	2014	4,6	95	1755
SK	4106	1,2	100	4140
UCTE	380610	5,0		360762
DK_W	3569	8,3	100	3995
UA_W ⁵	957	1,9	100	1292



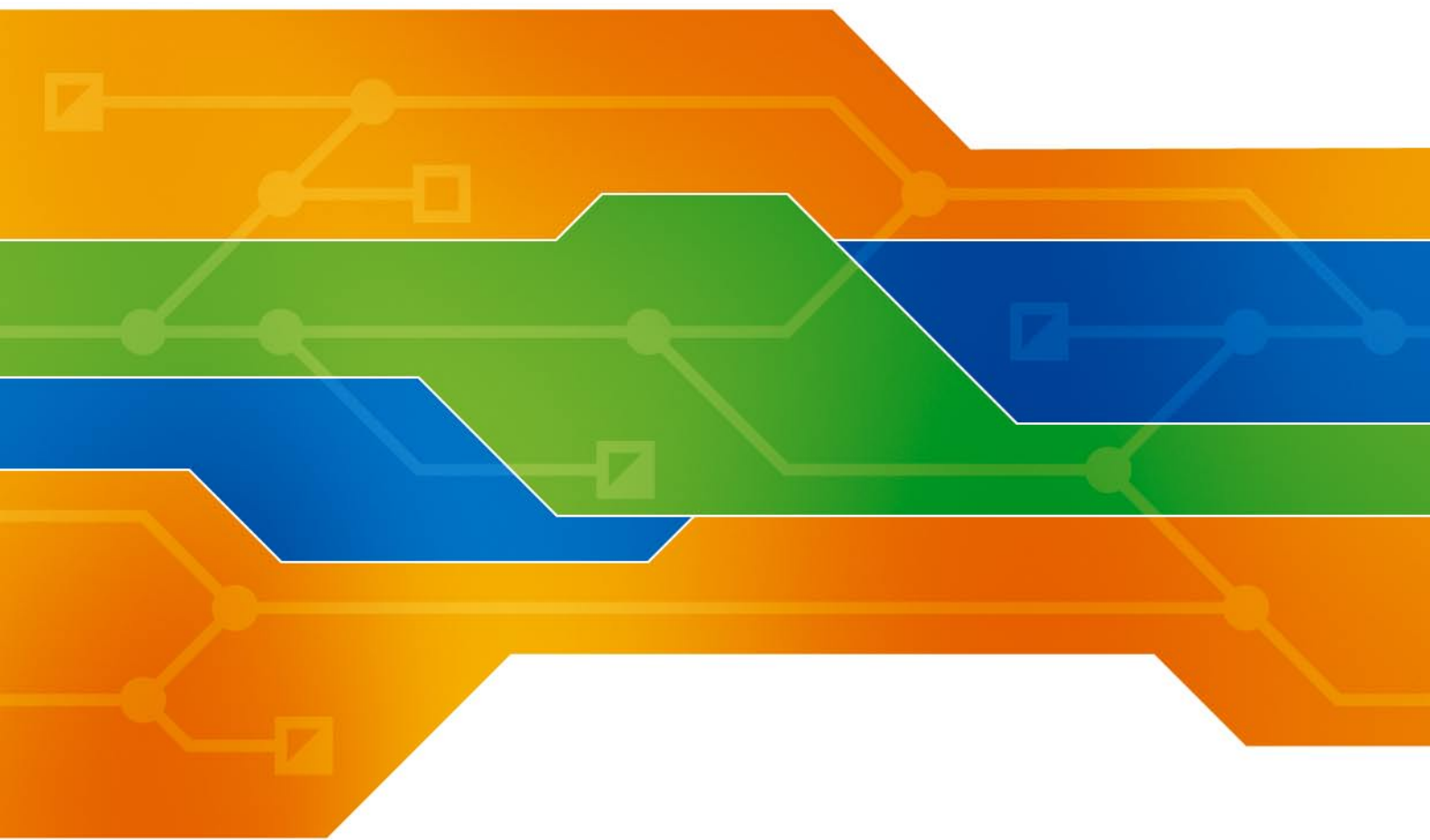
¹ Percentage as referred to total values in %

² Variation as compared to corresponding month of the previous year

³ Power produced in parallel operation (including autoproduction)

⁴ Values estimated on the basis of the vertical load. The vertical load is the total amount of the power flows out of the transmission network into distribution and large consumer networks.

⁵ UA_W represents the so-called Burshtyn Island synchronously interconnected with UCTE



Contact

Boulevard Saint-Michel, 15
B-1040 Brussels - Belgium
Tel +32 2 741 69 40 - Fax +32 2 741 69 49

info@ucte.org
www.ucte.org