



# January 2008

Monthly provisional values

union for the co-ordination of transmission of electricity



<b>Table of contents</b>		Page
1	Electricity supply situation of the countries	2
2	Physical energy flows	3
3	Monthly consumption	4
4	Monthly consumption variation	6
5	Consumption of the last 12 months	8
6	Variation of the last 12 months' consumption	10
7	Load flows (night)	12
8	Load flows (day)	13
9	Unavailability of international tie lines ( major events )	14
10	Network reliability ( major events )	16
11	Scheduled exchanges	17
12	Load on the 3 <sup>rd</sup> Wednesday	18

#### **General remarks and abbreviations used in the tables**

- All values of production and consumption in chapter 1, 3&4, 5&6 and 12 are calculated to represent 100% of the national values.
- DK\_W Denmark West represents the Western part of Denmark synchronously interconnected with UCTE (Jutland and Funen).
- UA\_W Ukraine West represents the so-called Burshtyn Island synchronously interconnected with UCTE.
- CET Central European Time
- The Bulgarian load values on the 3rd Wednesday are gross values

Countries	Net production in GWh							Exchange balance in GWh	Pump in GWh	Consumption in GWh			
	Therm. nuclear	Therm. conv.	Hydro prod	Other renew.	Of which wind	Not identify	Total			monthly	var. [%]	last 12 months	var. [%]
AT	0	2463	2384	0	0	674	5521 <sup>1</sup>	1109	274	6356	1,4	67529	1,8
BA	0	706	479	0	0	0	1185	-92	0	1093	6,7	11240	2,0
BE <sup>2</sup>	3870	3008	158	364	101	0	7400 <sup>1</sup>	1139	142	8397	1,0	90002	-0,2
BG	1524	2200	361	0	0	0	4085	-112	56	3917	22,3	33839	-3,0
CH	2409	181	2379	98	2	0	5067 <sup>1</sup>	1157	163	6061	3,5	63265	0,6
CZ	2660	4934	241	41	24	0	7876 <sup>1</sup>	-1468	56	6352	4,9	64960	1,9
DE	12303	34159	2017	8453	6563	0	56932 <sup>1</sup>	-4113	723	52096	-0,8	555484	-0,6
DK_W	0	1506	4	969	817	0	2479 <sup>1</sup>	-431	0	2048	0,0	21795	0,5
ES	5320	16011	1682	2880	2206	0	25893 <sup>1</sup>	-457	419	25017	1,5	268368	3,1
FR	40922	7055	5911	971	596	0	54859	-4301	799	49759	3,7	482097	1,7
GR	0	4307	308	143	123	0	4758 <sup>1</sup>	260	103	4915	6,2	55976	4,1
HR	0	564	505	4	4	0	1073 <sup>1</sup>	622	14	1681	8,1	17506	4,9
HU	1374	2109	0	0	0	0	3483 <sup>1</sup>	291	0	3774	3,8	41426	2,2
IT	0	22716	2888	949	498	0	26553	3639	638	29554	0,7	340031	0,7
LU	0	275	84	16	9	0	375	345	98	622	2,0	6789	2,6
ME	0	135	175	0	0	0	310	152	0	462	6,9	4684	n.a.
MK	0	566	115	0	0	0	681 <sup>1</sup>	261	0	942	13,5	8678	4,9
NL	362	8247	0	883	614	0	9492 <sup>1</sup>	1263	0	10755	0,2	116979	0,7
PL <sup>3</sup>	0	13390	241	112	102	0	13743 <sup>1</sup>	-189	102	13452	3,9	142659	4,8
PT	0	3013	666	586	417	0	4265 <sup>1</sup>	714	106	4873	-0,9	51534	1,6
RO	962	3290	1427	0	0	0	5679 <sup>1</sup>	-505	5	5169	9,2	54554	3,1
RS	0	3146	875	0	0	0	4021	216	52	4185	12,8	40381	n.a.
SI	516	473	194	0	0	0	1183	-36	0	1147	-3,0	13412	0,9
SK	1468	777	362	29	0	0	2636 <sup>1</sup>	29	28	2637	3,2	27662	1,9
UCTE	73690	135231	23456	16498	12076	674	249549 <sup>1</sup>	-507	3778	245264	2,3	2580850	1,4
UA_W	0	804	8	0	0	0	812 <sup>1</sup>	-356	0	456	8,8	4308	0,6

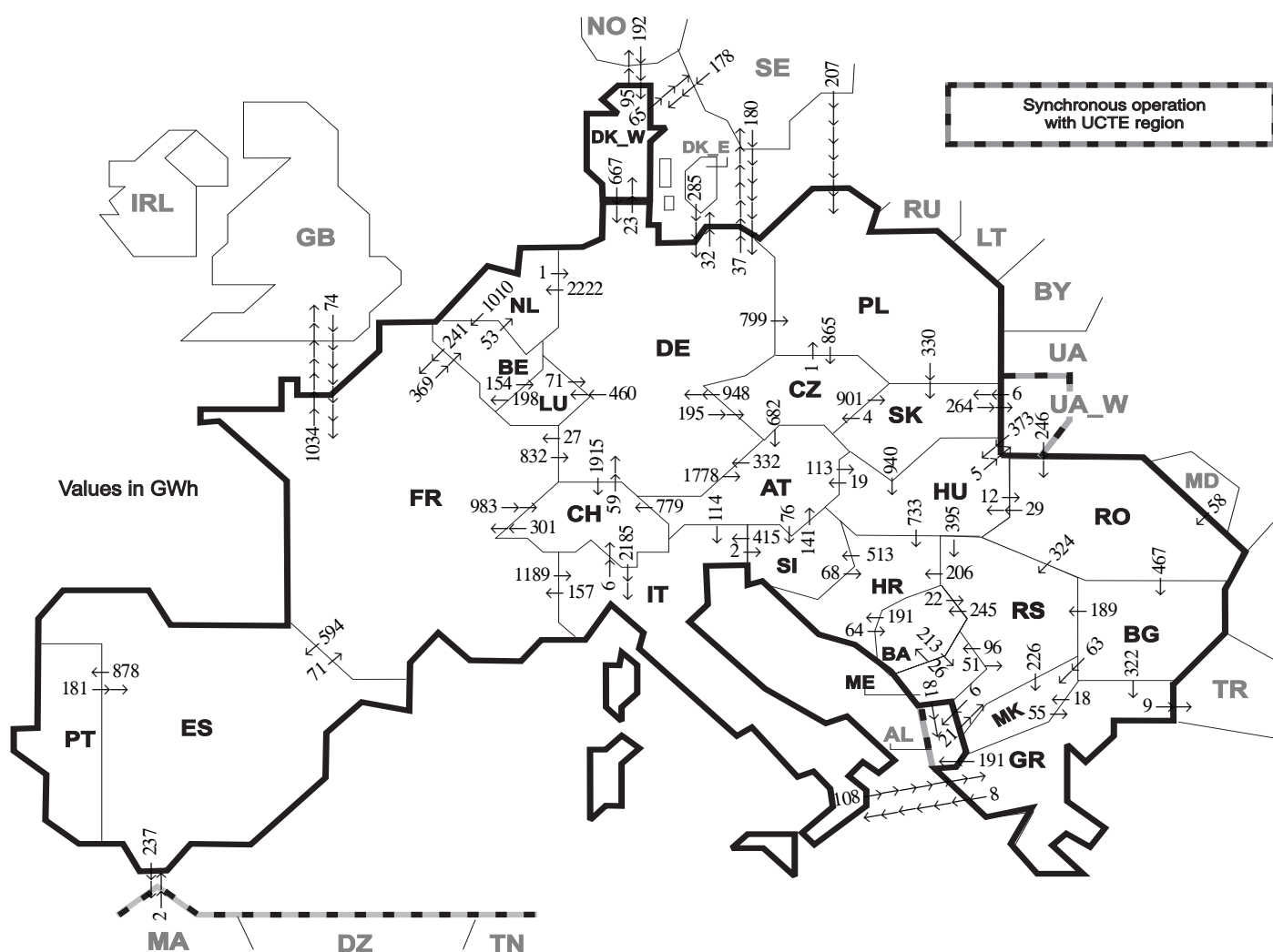
<sup>1</sup> Including deliveries from industry

<sup>2</sup> The reported figures are best estimates based on actual measurements and extrapolations

<sup>3</sup> Operational data

All representativities of the national production and consumption values used to calculate values at a representativity of 100% as stated in the table above:

Countries	AT	BA	BE	BG	CH	CZ	DE	DK_W	ES	FR	GR	HR	HU	IT	LU	ME	MK	NL	PL	PT	RO	RS	SI	SK	UA_W
Production																									
Therm.nuclear	100	100	100	100	100	100	100	100	100	100	100	100	100	100	100	100	100	100	100	100	100	100	100	100	100
Thermal conv.	100	100	100	100	100	100	100	100	97	100	100	100	100	100	100	100	100	100	100	95	100	100	100	100	100
Hydro prod	100	100	100	100	100	100	100	100	100	100	100	100	100	100	100	100	100	100	100	100	100	100	100	100	100
Other renew.	100	100	100	100	100	100	100	100	95	100	100	100	100	100	100	100	100	100	100	100	100	100	100	100	100
Not identify	100	100	100	100	100	100	100	100	100	100	100	100	100	100	100	100	100	100	100	100	100	100	100	100	100
Consumption	100	100	100	100	100	100	100	100	98	100	100	100	100	100	100	100	100	100	100	97	100	100	100	100	100



Exporting countries	AT	BA	BE	BG	CH	CZ	DE	DK_W	ES	FR	GR	HR	HU	IT	LU	ME	MK	NL	PL	PT	RO	RS	SI	SK	UA_W	Other III <sup>1</sup>	Sum export
AT	-	-	-	-	779	0	332	-	-	-	-	-	113	114	-	-	-	-	-	-	-	76	-	-	-	1414	
BA	-	-	-	-	-	-	-	-	-	-	-	191	-	-	-	213	-	-	-	-	-	22	-	-	-	426	
BE	-	-	-	-	-	-	-	-	241	-	-	-	-	-	154	-	53	-	-	-	-	-	-	-	-	448	
BG	-	-	-	-	-	-	-	-	-	-	322	-	-	-	-	63	-	-	-	0	189	-	-	-	0	574	
CH	0	-	-	-	-	59	-	-	301	-	-	-	2185	-	-	-	-	-	-	-	-	-	-	-	-	2545	
CZ	682	-	-	-	-	-	948	-	-	-	-	-	-	-	-	-	-	1	-	-	-	-	901	-	-	2532	
DE	1778	-	-	-	1915	195	-	23	-	27	-	-	-	460	-	-	-	2222	799	-	-	-	-	-	69	7488	
DK_W	-	-	-	-	-	-	667	-	-	-	-	-	-	-	-	-	-	-	-	-	-	-	-	-	-	827	
ES	-	-	-	-	-	-	-	-	71	-	-	-	-	-	-	-	-	-	-	878	-	-	-	-	-	1186	
FR	-	-	369	-	983	-	832	-	594	-	-	-	1189	-	-	-	-	-	-	-	-	-	-	-	1034	5001	
GR	-	-	-	0	-	-	-	-	-	-	-	-	8	-	-	18	-	-	-	-	-	-	-	-	200	226	
HR	-	64	-	-	-	-	-	-	-	-	-	0	-	-	-	-	-	-	-	-	-	513	-	-	-	577	
HU	19	-	-	-	-	-	-	-	-	-	-	733	-	-	-	-	-	-	-	-	12	395	0	5	-	1164	
IT	0	-	-	-	6	-	-	-	-	157	108	-	-	-	-	-	-	-	-	-	-	2	-	-	-	273	
LU	-	-	198	-	-	-	71	-	-	-	-	-	-	-	-	-	-	-	-	-	-	-	-	-	-	269	
ME	-	26	-	-	-	-	-	-	-	-	-	-	-	-	-	-	-	-	-	-	-	51	-	-	81	158	
MK	-	-	-	0	-	-	-	-	-	-	55	-	-	-	-	-	-	-	-	-	-	0	-	-	-	55	
NL	-	-	1010	-	-	-	1	-	-	-	-	-	-	-	-	-	-	-	-	-	-	-	-	-	-	1011	
PL	-	-	-	-	-	865	0	-	-	-	-	-	-	-	-	-	-	-	-	-	-	-	-	330	0	1195	
PT	-	-	-	-	-	-	-	-	181	-	-	-	-	-	-	-	-	-	-	-	-	-	-	-	-	181	
RO	-	-	-	467	-	-	-	-	-	-	-	-	29	-	-	-	-	-	-	-	-	-	-	0	0	820	
RS	-	245	-	0	-	-	-	-	-	-	-	206	0	-	96	226	-	-	-	0	-	-	-	-	-	6	779
SI	141	-	-	-	-	-	-	-	-	-	68	-	415	-	-	-	-	-	-	-	-	-	-	-	-	624	
SK	-	-	-	-	-	4	-	-	-	-	-	-	940	-	-	-	-	0	-	-	-	-	-	-	264	1208	
UA_W	-	-	-	-	-	-	-	-	-	-	-	-	373	-	-	-	-	-	-	-	246	-	6	-	-	625	
Other III <sup>1</sup>	-	-	-	0	-	-	465	370	2	74	0	-	-	-	-	0	-	-	207	-	58	21	-	-	-	1197	
<b>Sum imp</b>	<b>2620</b>	<b>335</b>	<b>1577</b>	<b>467</b>	<b>3683</b>	<b>1064</b>	<b>3375</b>	<b>393</b>	<b>777</b>	<b>871</b>	<b>485</b>	<b>1198</b>	<b>1455</b>	<b>3911</b>	<b>614</b>	<b>309</b>	<b>307</b>	<b>2275</b>	<b>1007</b>	<b>878</b>	<b>316</b>	<b>1002</b>	<b>591</b>	<b>1237</b>	<b>269</b>	<b>1787</b>	<b>32803</b>

Sum of physical energy flows between UCTE countries = 28925GWh Total physical energy flows = 32803GWh

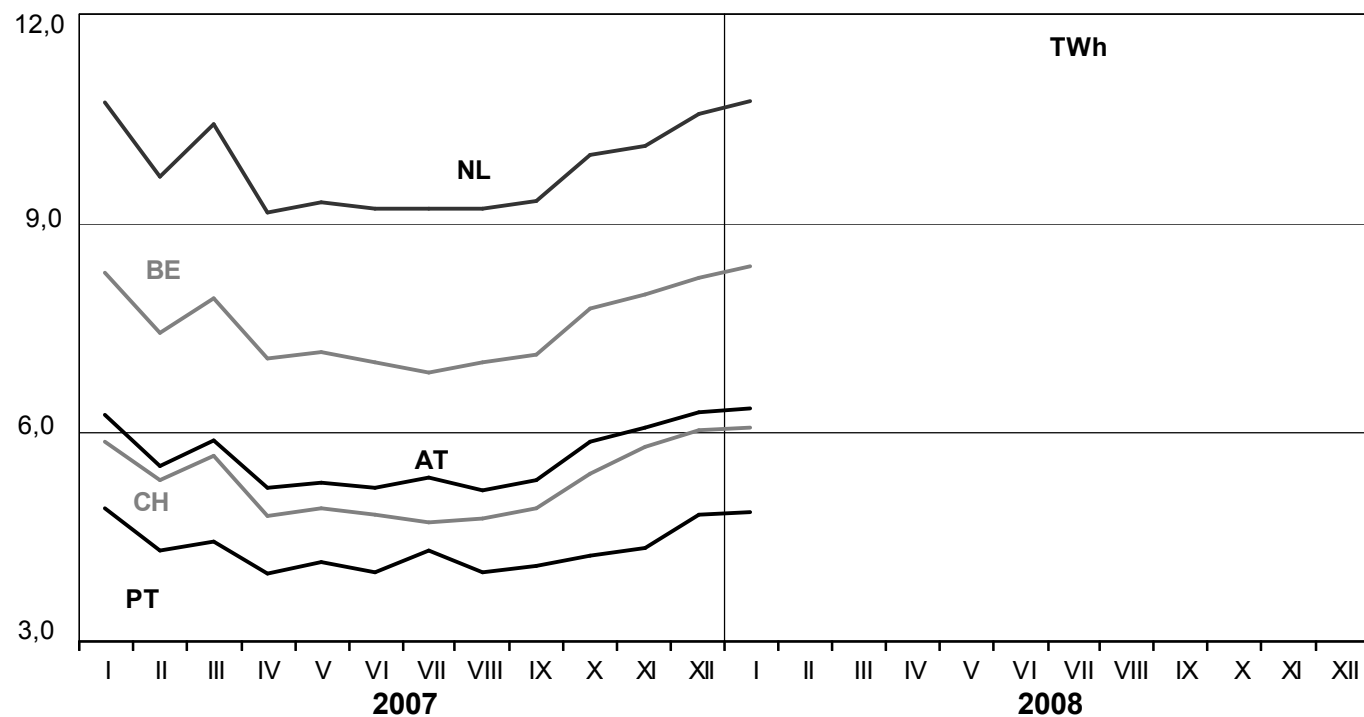
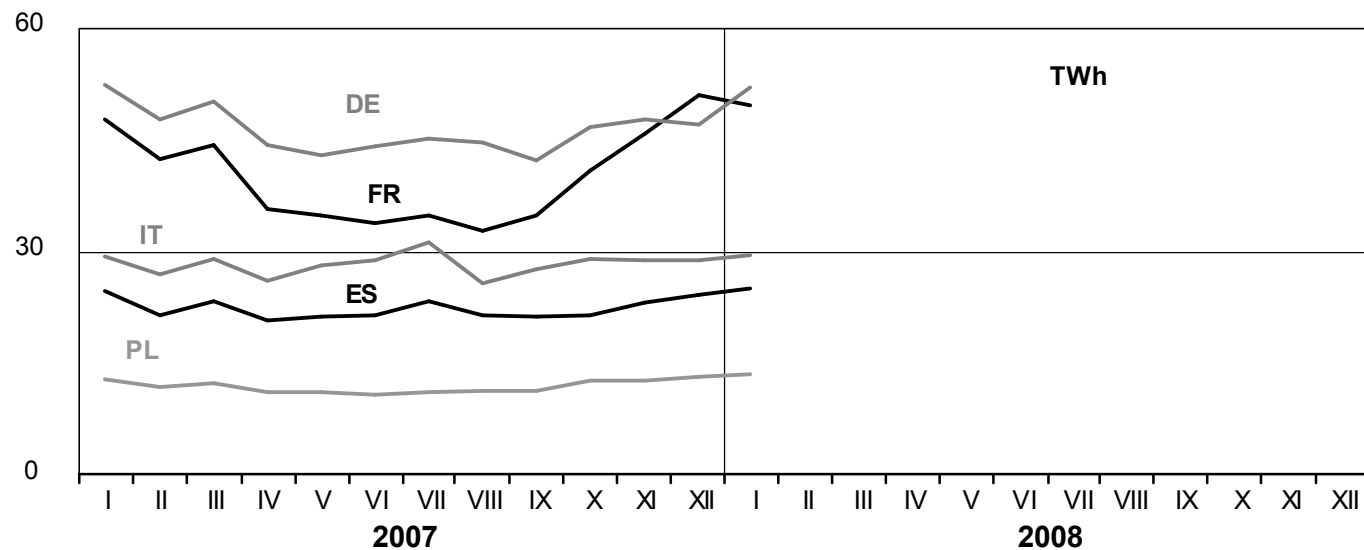
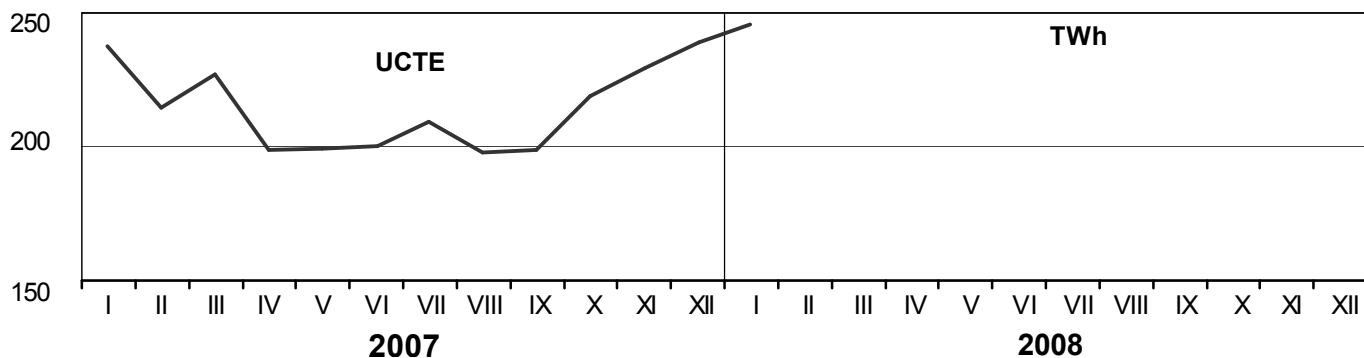
<sup>1</sup> Other III: Albania, Belarus, Denmark East, Great Britain, Morocco, Republic of Moldavia, Norway, Sweden, Republic of Turkey and Ukraine

These physical energy flows were measured on the cross-frontier transmission lines (≤ 110 kV) listed in table 9 of the Statistical Yearbook. These values may differ from the official statistics and the exchange balances in chapter 1.

# 3

## Monthly consumption

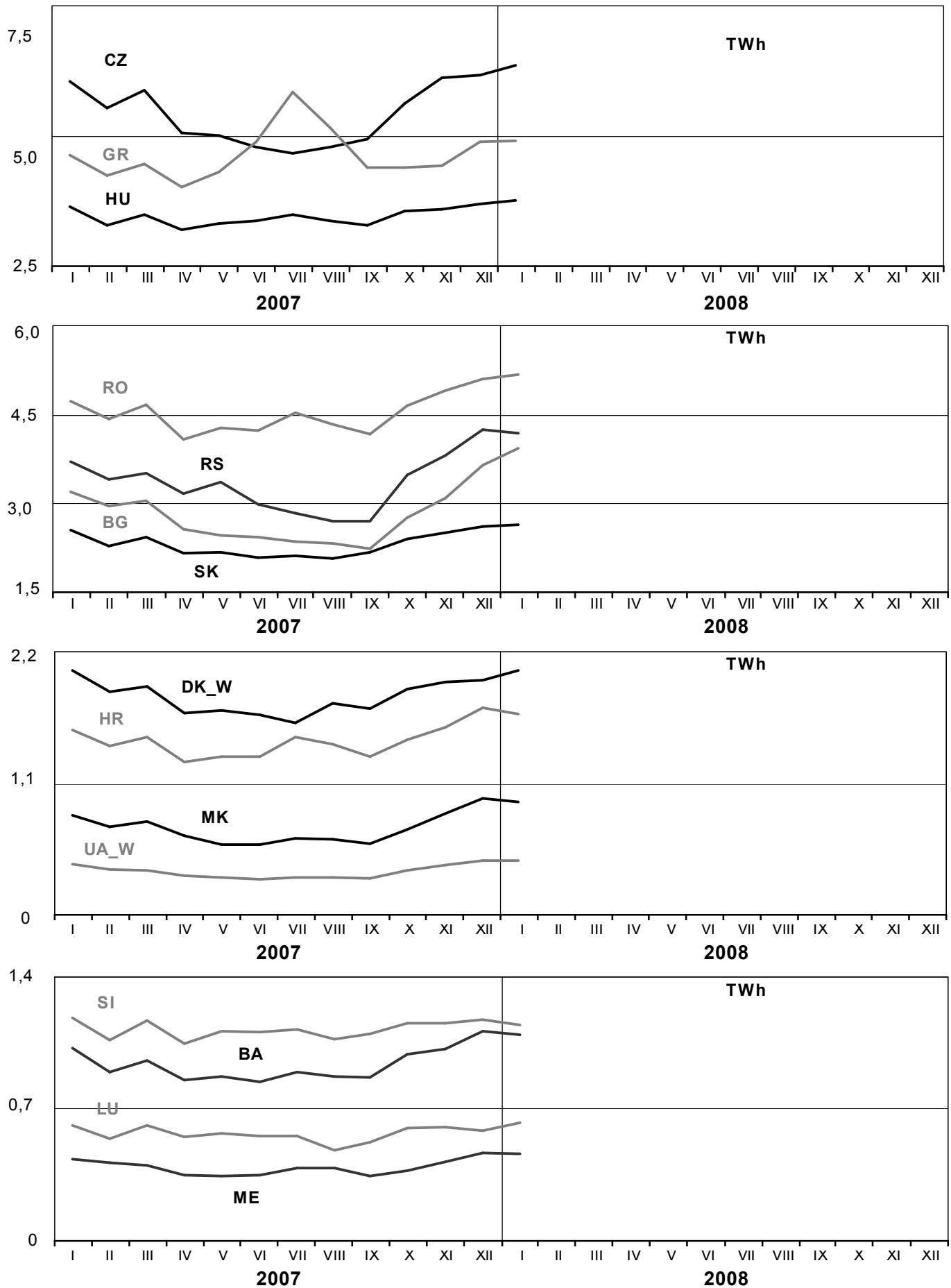
January 2008



# 3

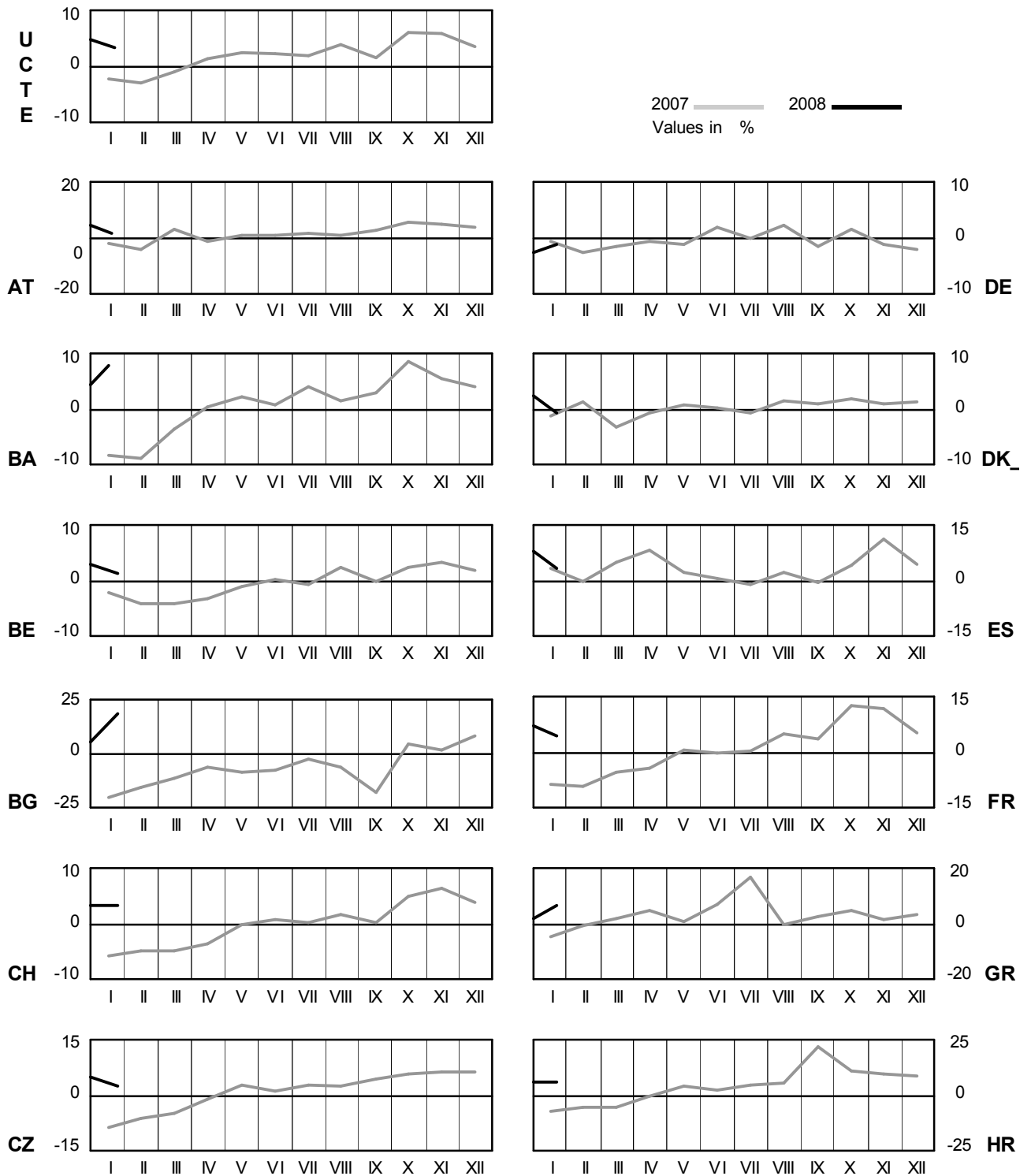
## Monthly consumption

January 2008



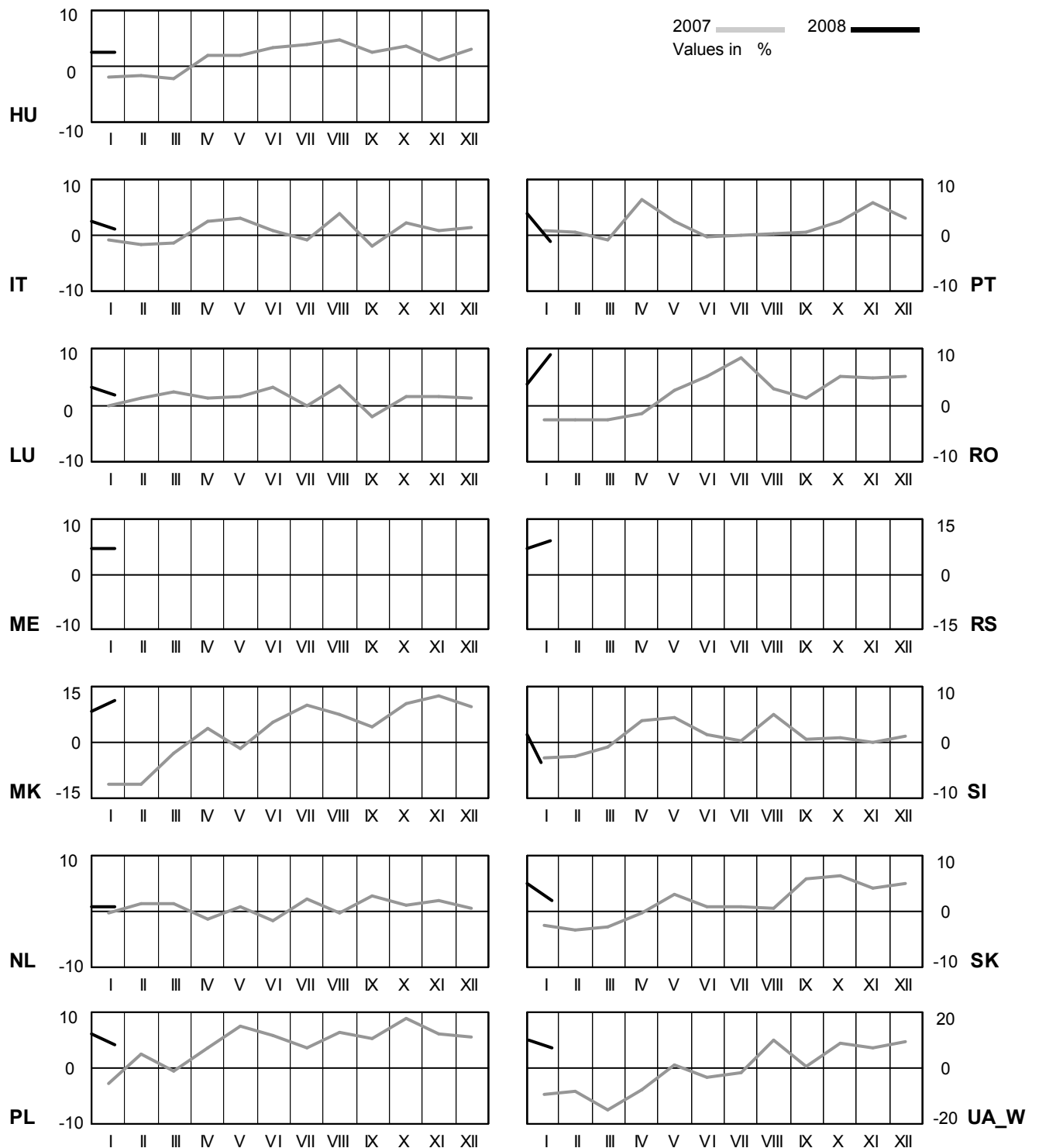
# 4 Monthly consumption variation

January 2008



# 4 Monthly consumption variation

January 2008

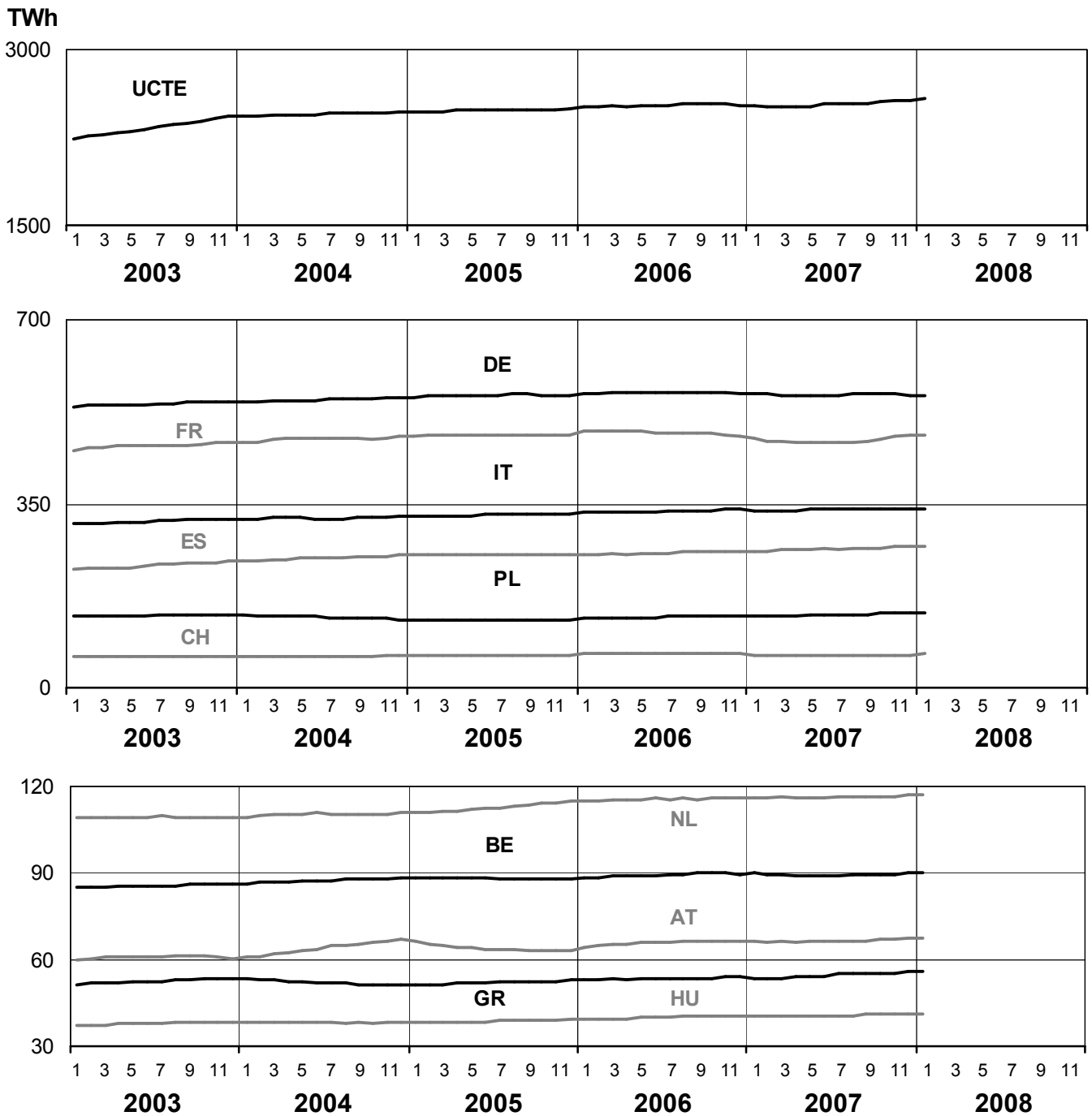




# 5

## Consumption of the last 12 months

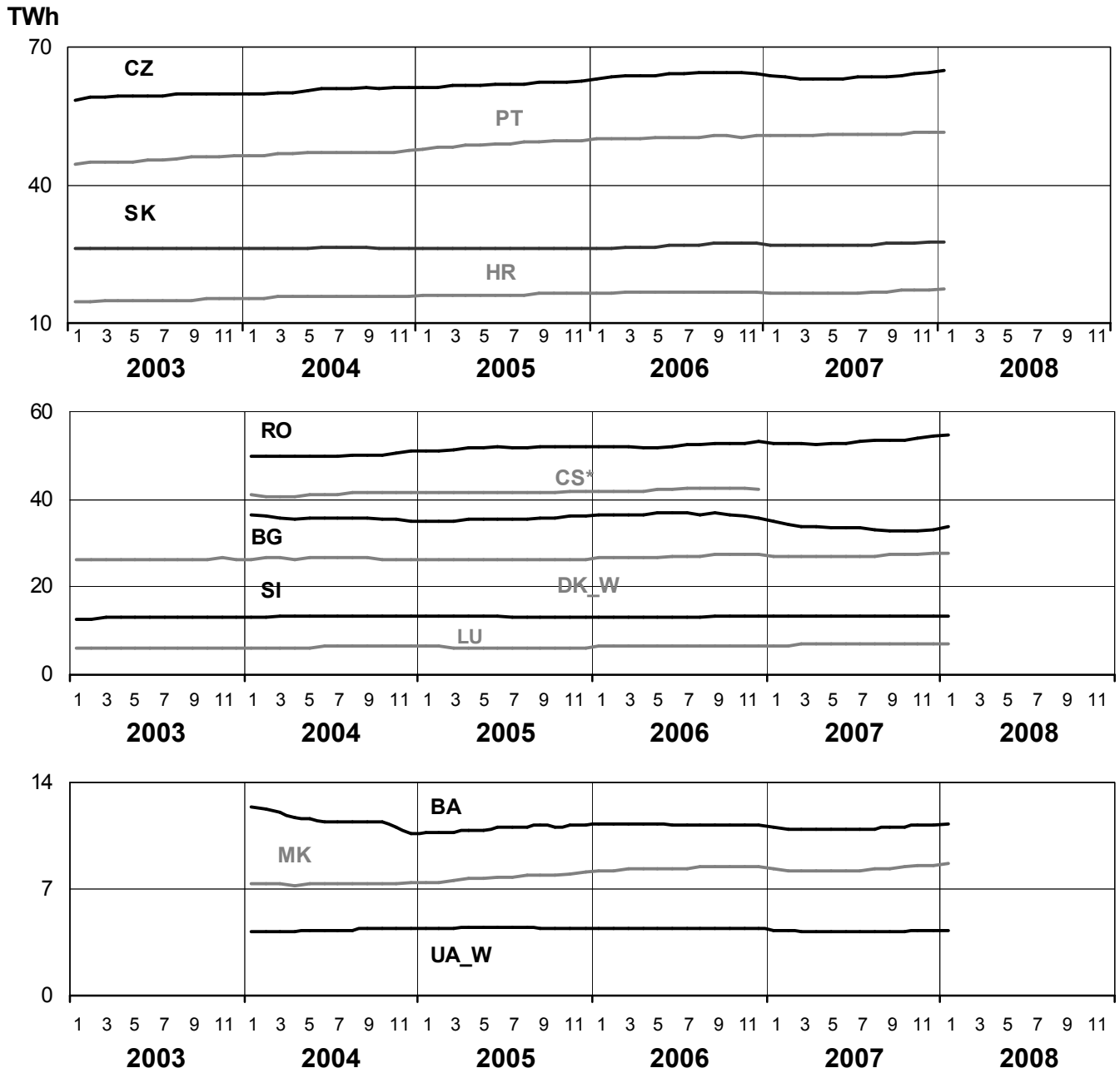
January 2008



# 5

## Consumption of the last 12 months

January 2008

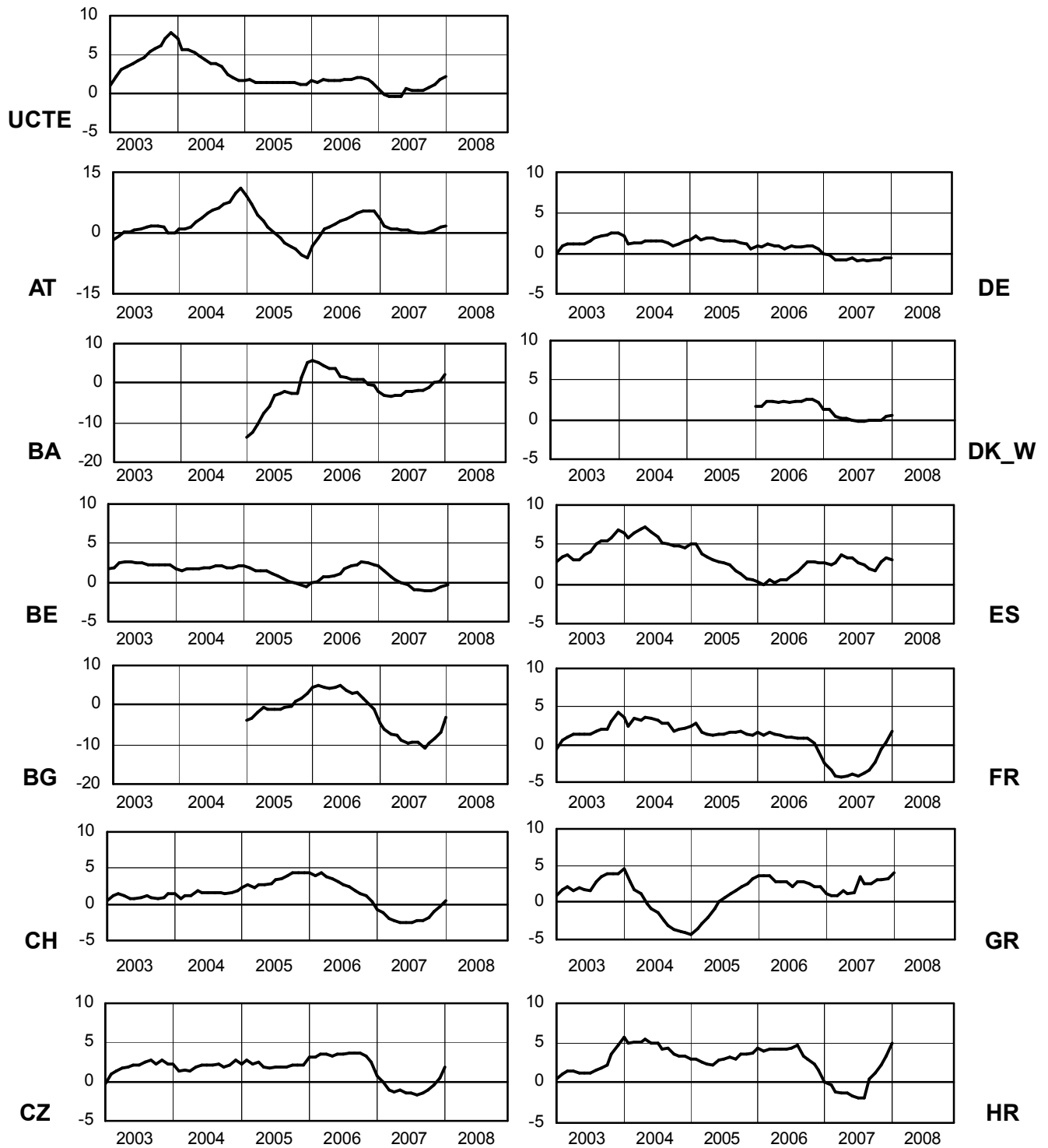


\* CS consumption values until December 2006; from 2007 on ME and RS as separate countries

# 6

## Variation of the last 12 months' consumption in %

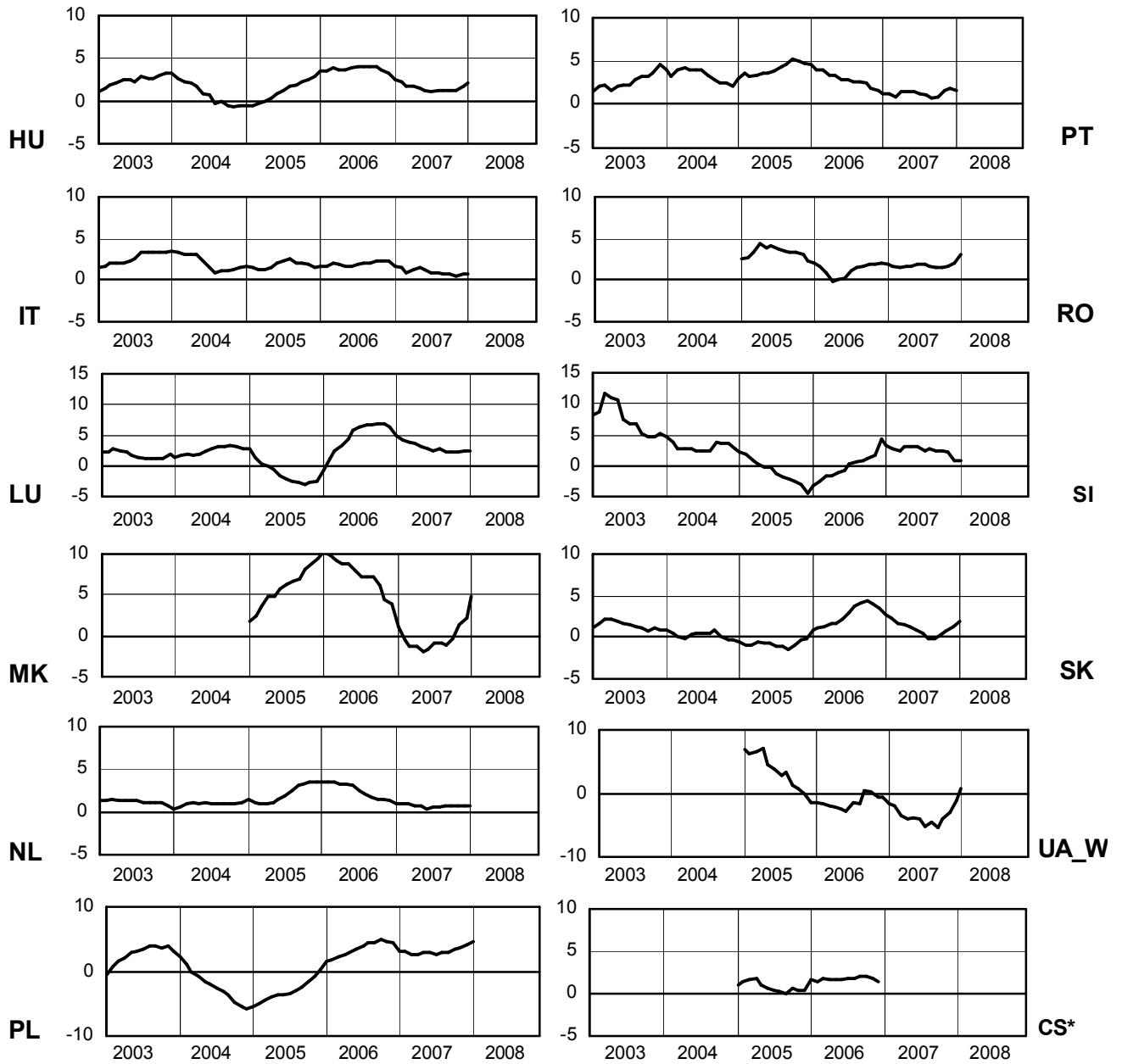
January 2008



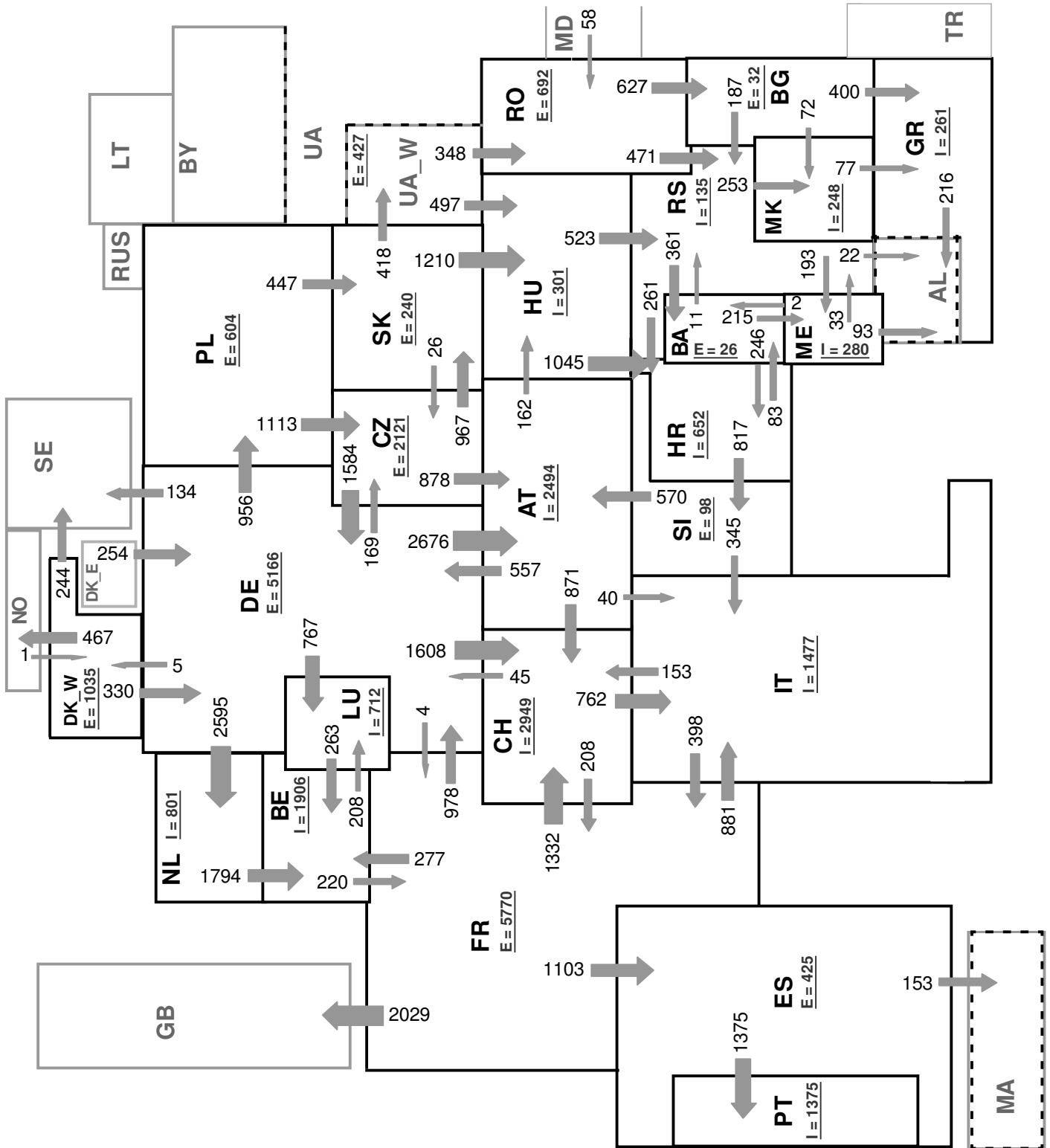
# 6

## Variation of the last 12 months' consumption in %

January 2008



\* CS consumption values until December 2006; from 2007 on ME and RS as separate countries



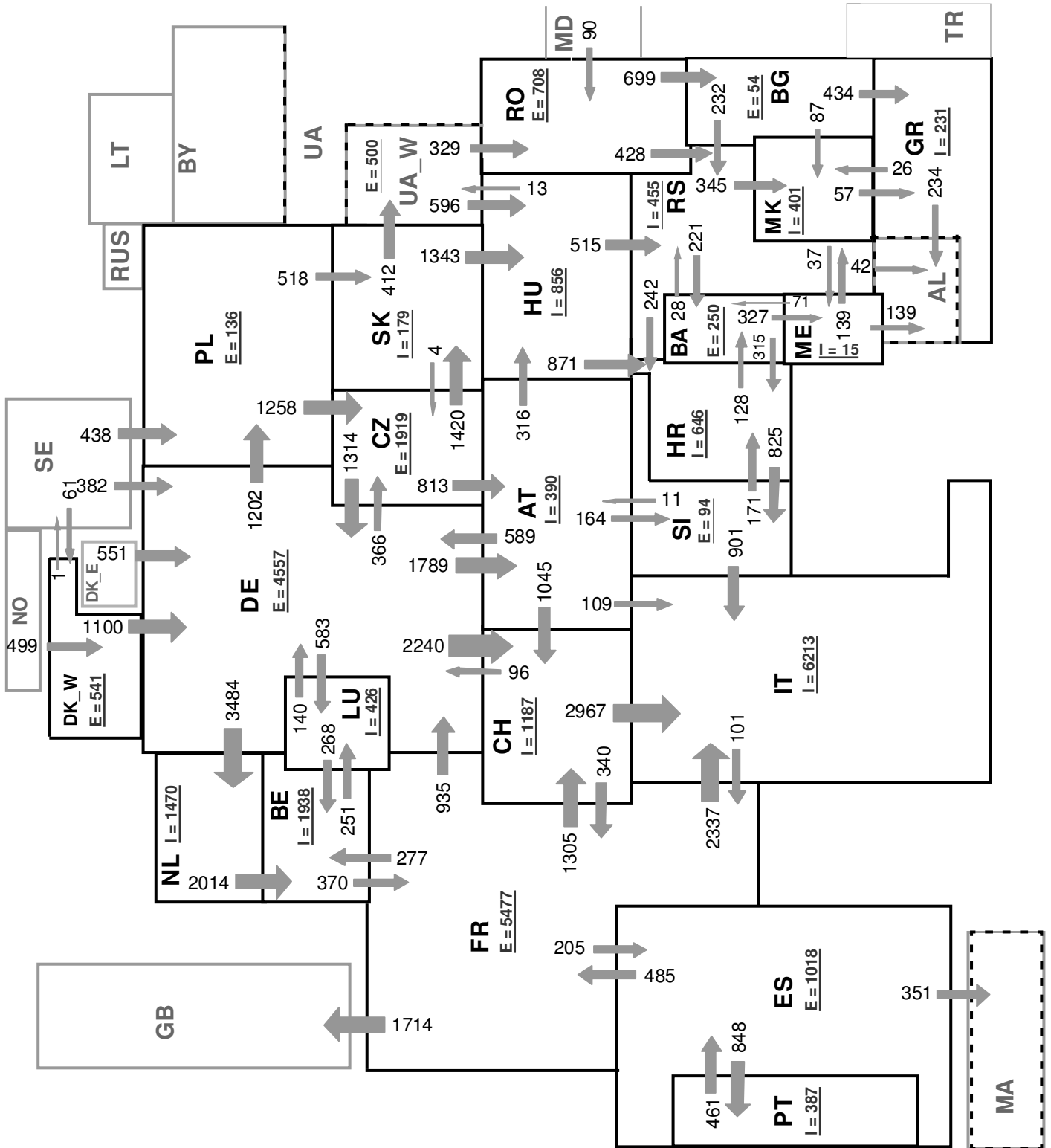
Sum of load flows in MW

UCTE = 33754 MW

Total = 38688 MW

Synchronous operation with UCTE region

I = Import balance  
E = Export balance



Sum of load flows in MW

UCTE = 40167 MW

Total = 46019 MW

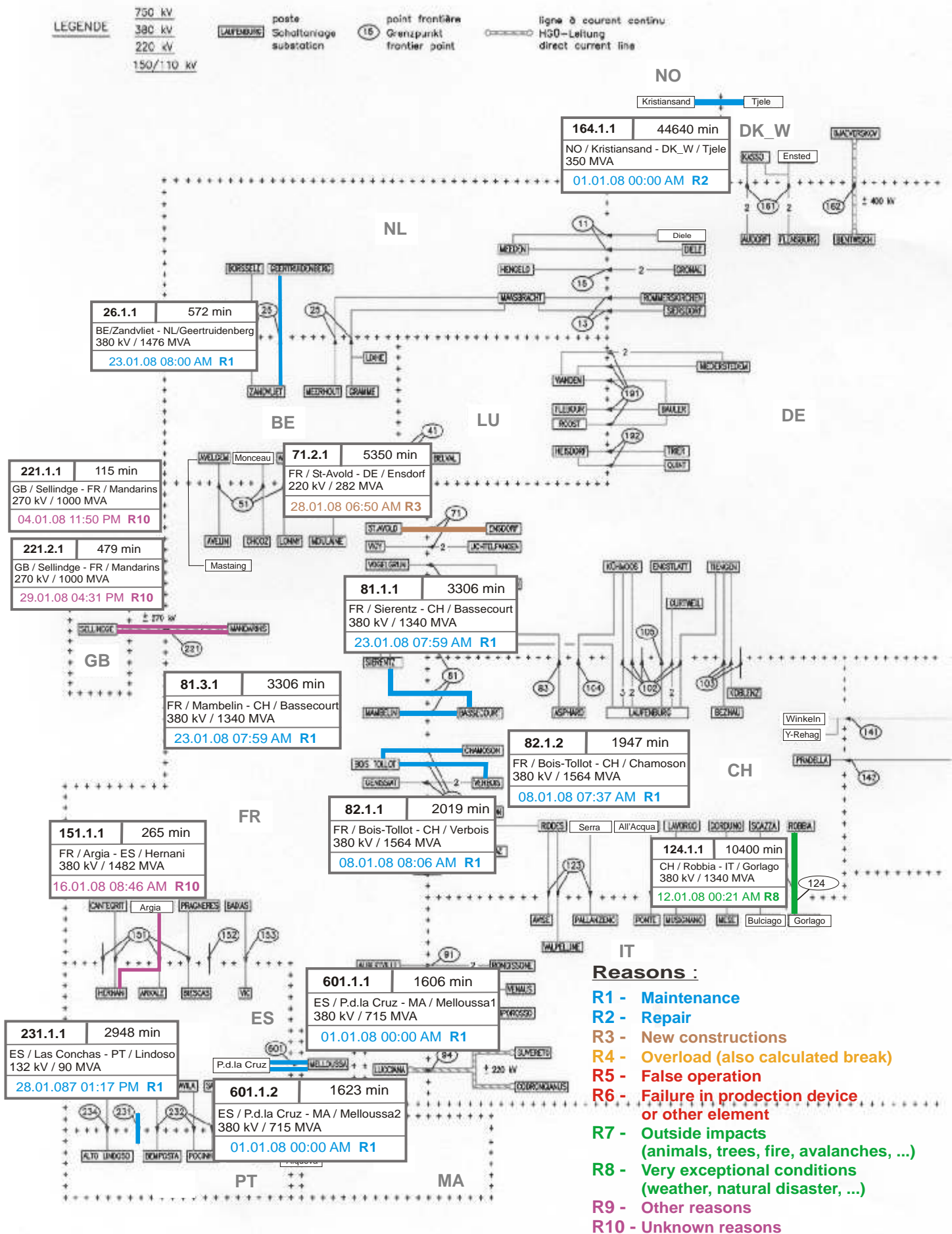
Synchronous operation with UCTE region

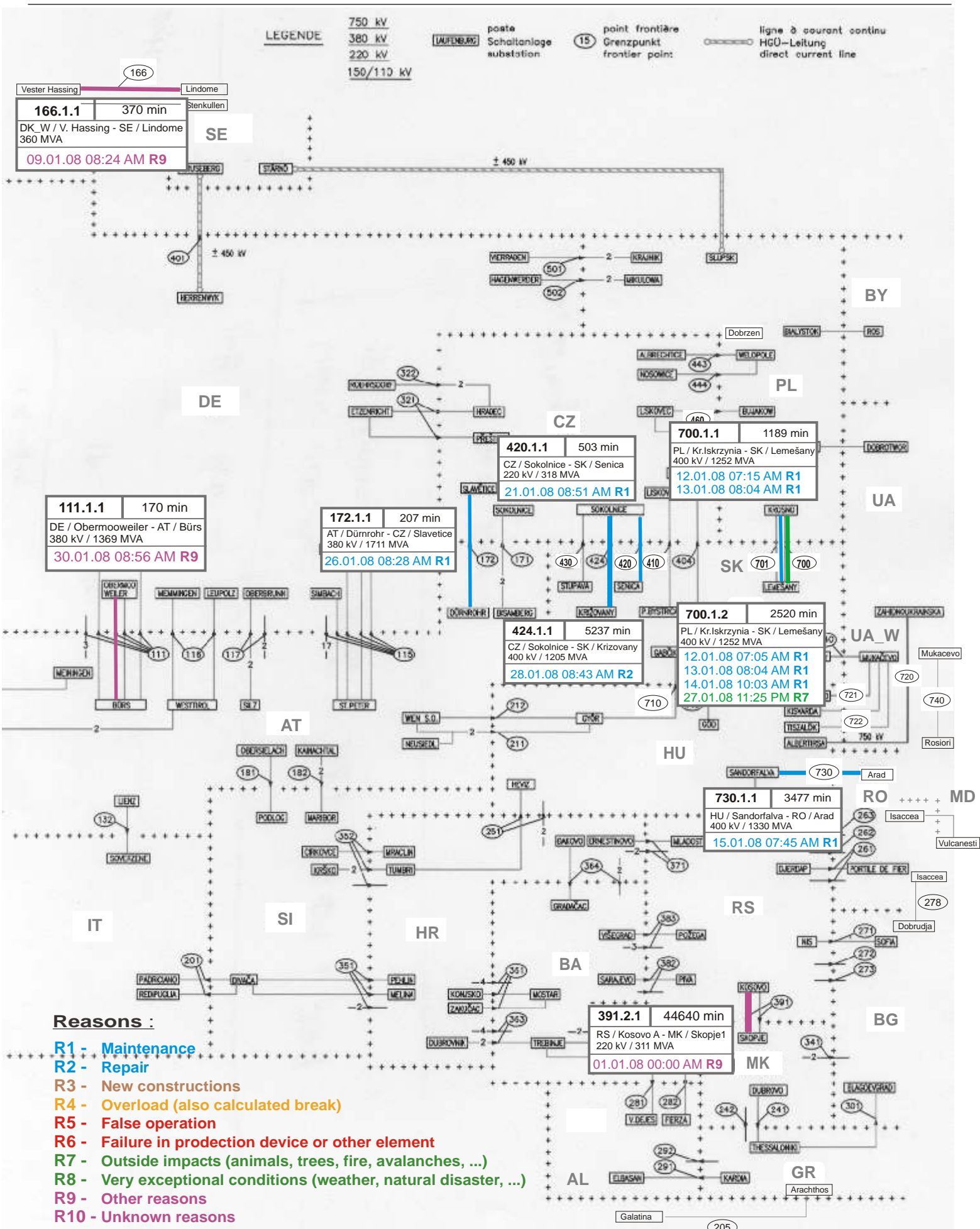
I = Import balance  
E = Export balance

# 9

## Unavailability of international tie lines (major events with sum over 115 minutes)

January 2008

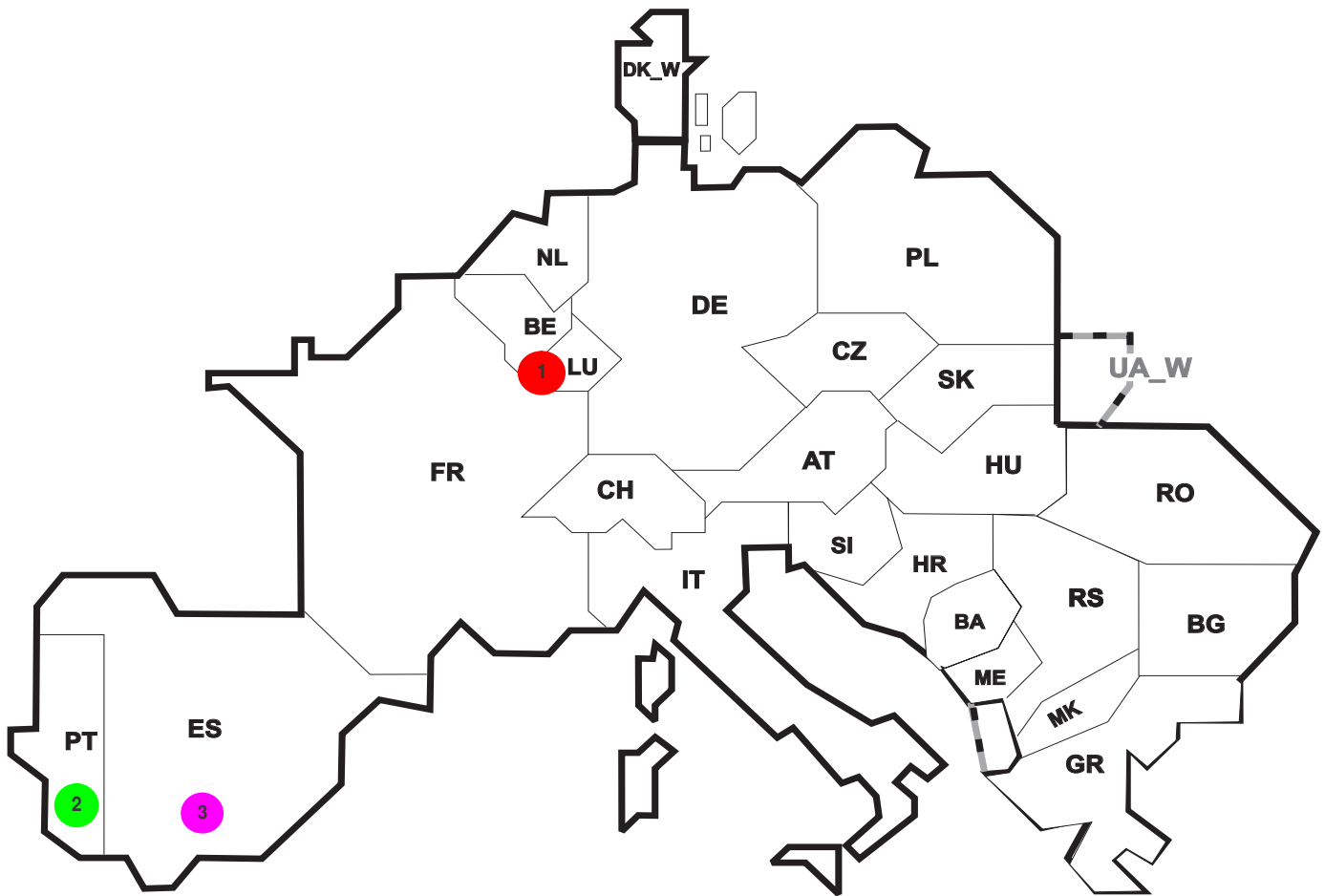




**Reasons :**

- R1 - Maintenance
- R2 - Repair
- R3 - New constructions
- R4 - Overload (also calculated break)
- R5 - False operation
- R6 - Failure in protection device or other element
- R7 - Outside impacts (animals, trees, fire, avalanches, ...)
- R8 - Very exceptional conditions (weather, natural disaster, ...)
- R9 - Other reasons
- R10 - Unknown reasons





Reasons:

- R4** Overload (also calculated break)
- R5** False operation
- R6** Failure in protection device or other element
- R7** Outside impacts (animals, trees, fire, avalanches, ...)
- R8** Very exceptional conditions (weather, natural disaster, ...)
- R9** Other reasons
- R10** Unknown reasons

No	Country	Substation	Reason	Energy not supplied <sup>2</sup> [ MWh ]	Total loss of power [ MW ]	Restoration time [ min ]	Equivalent time of interruption <sup>1</sup>
1	LU	Schifflange	R6	16	138	7	1,242
2	PT	Torrao	R7	7	0	4	0,071
3	ES	Los Barrios	R9	2	294	50	0,005

<sup>1</sup> ( year [in min] \* energy not supplied ) / consumption last 12 months

Control area	Export Programs	Import Programs	Export Programs at 03:00	Import Programs at 03:00	Export Programs at 11:00	Import Programs at 11:00
AT	n.a.	n.a.	n.a.	n.a.	n.a.	n.a.
BA	261617	122879	270	140	336	140
BE	263534	1352736	0	1802	0	1938
BG	n.a.	n.a.	n.a.	n.a.	n.a.	n.a.
CH	1639302	2791776	239	3158	2890	4090
CZ	2069773	574818	2930	722	3034	1087
DE	5173682	1071539	5266	1719	6363	1016
DK_W	408655	793246	452	781	980	1172
ES	1121975	691137	1685	1177	1437	300
FR	7239539	3067765	10354	4662	9582	3987
GR	25636	286965	0	220	0	205
HR	120607	743415	231	906	259	934
HU	1061756	1352852	1320	1598	1161	2023
IT	3912131	273401	551	2028	101	6314
ME	267999	420128	189	472	189	522
MK	200	260700	0	286	0	426
NL	386839	1647888	594	1394	246	1725
PL	304410	221923	448	0	448	438
PT	5930	718701	0	1400	0	472
RO	604527	103955	776	79	815	116
RS	513707	650214	582	706	654	900
SI	625794	586579	779	680	901	778
SK	788601	736594	1628	1304	1755	1810
UA_W	352121	1524	443	0	497	0

- Control areas can differ from national borders ( i.e. German block which includes parts of AT, LU and DK ).

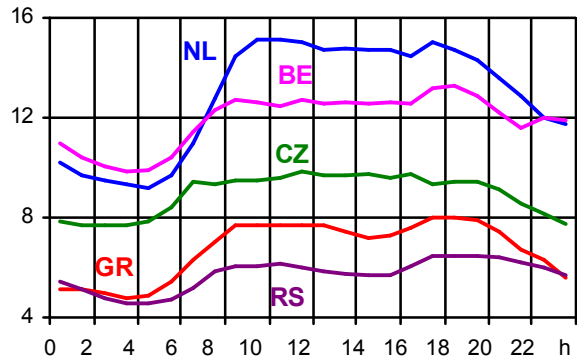
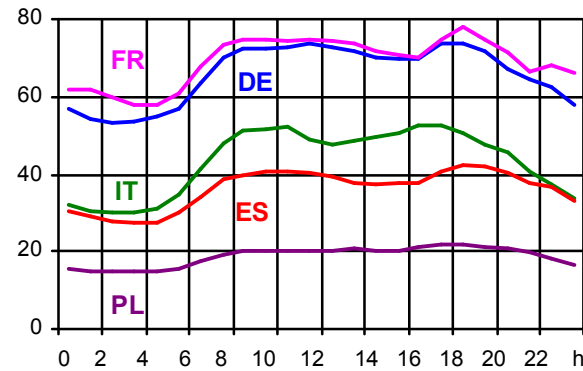
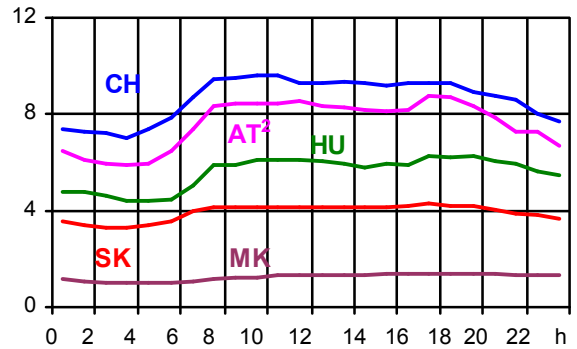
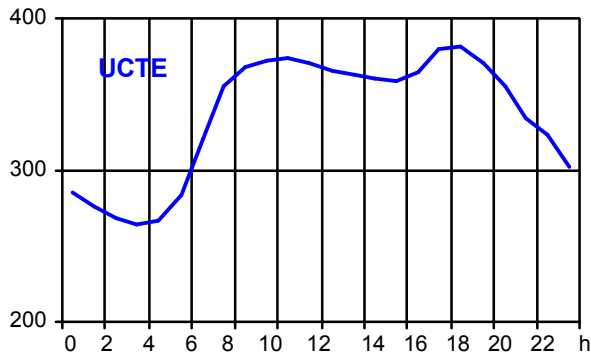
- Values are calculated on an hourly base ( MWh ).

- This values are not the provisional values entered in the VULCANUS system, but the definitive values after an eventual correction during the actual date.

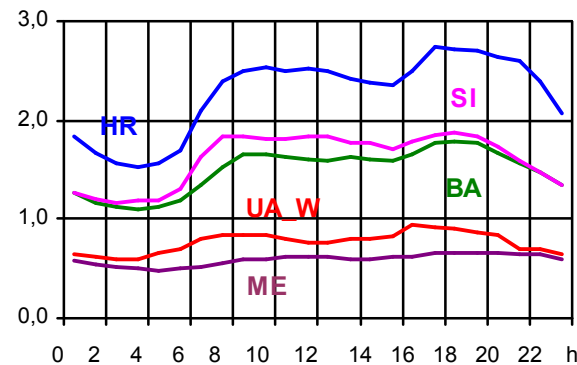
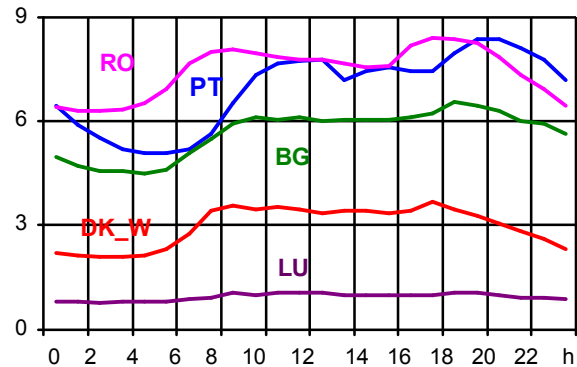
- Export Programs: Sum of all positive values of every hour of every border  
 - Import Programs: Sum of all negative values of every hour of every border

- Export Programs at 03:00: Sum of all positive values the third Wednesday from 02:00 to 03:00 a.m.  
 - Import Programs at 03:00: Sum of all negative values the third Wednesday from 02:00 to 03:00 a.m.

- Export Programs at 11:00: Sum of all positive values the third Wednesday from 10:00 to 11:00 a.m.  
 - Import Programs at 11:00: Sum of all negative values the third Wednesday from 10:00 to 11:00 a.m.



	Highest load		Load representativity %
	MW	var.% <sup>1</sup>	
AT <sup>2</sup>	8733	n.a.	100
BA <sup>3</sup>	1793	3,3	100
BE	13300	1,5	100
BG	6560	14,4	100
CH	9610	4,7	100
CZ	9804	5,1	100
DE	73714	-11,0	100
DK_W	3664	1,4	100
ES	42118	4,1	98
FR	77932	7,2	100
GR	8013	2,8	100
HR	2740	4,5	100
HU	6286	3,0	100
IT	52632	0,1	100
LU	1041	5,0	100
ME	670	4,0	100
MK	1431	8,4	100
NL	15088	-15,4	100
PL <sup>4</sup>	21901	3,5	100
PT	8386	0,3	97
RO	8439	38,4	100
RS	6520	-14,4	100
SI	1866	-8,9	100
SK	4275	2,1	100
<b>UCTE</b>	<b>382230</b>	<b>0,3</b>	
UA_W	944	2,9	100



<sup>1</sup> Variation as compared to corresponding month of the previous year  
<sup>2</sup> Load values as of January 2007  
<sup>3</sup> The reported figures are best estimates based on actual measurements and extrapolations.  
<sup>4</sup> Operational data

## Contact

Boulevard Saint-Michel, 15  
B-1040 Brussels – Belgium  
Tel +32 2 741 69 40  
Fax +32 2 741 69 49

[info@ucte.org](mailto:info@ucte.org)  
[www.ucte.org](http://www.ucte.org)