

# UCTE



## January 2003

Monthly provisional values  
union for the co-ordination of transmission of electricity

<b>Table of contents <sup>1</sup></b>		<b>Page</b>
1	Electricity supply situation of the countries	2
2	Physical energy flows	3
3	Monthly consumption	4
4	Monthly consumption variation	5
5	Consumption of last 12 months	6
6	Variation of the last 12 months' consumption	7
7	Load flows (night)	8
8	Load flows (day)	9
9	Unavailability of international tie lines ( major events )	10
10	Network reliability ( major events )	12
11	Scheduled exchanges	13
12	Load on the 3 <sup>rd</sup> Wednesday	14

<sup>1</sup> Monthly provisional values as of UCTE database from 30 April 2003

# 1

## Electricity supply situation of the countries

January 2003

Countries	Net production in GWh <sup>1</sup>				Exchange balance in GWh	Pump in GWh	Consumption in GWh <sup>1</sup>			
	Hy	Tn	Tc	Total			monthly	Δ <sup>3</sup> [%]	last 12 months	Δ <sup>3</sup> [%]
B	145	4330	2874	7349 <sup>2</sup>	825	130	8044	2,3	83504	0,1
D	2275	14028	33657	49960 <sup>2</sup>	-863	591	48506	2,5	499789	1,0
E	6086	5509	8885	20480 <sup>2</sup>	26	587	19919	3,2	210884	2,1
F	7611	40326	5247	53184	-6371	497	46316	4,2	434219	-0,9
GR	715	0	3227	3942 <sup>2</sup>	170	7	4105	-1,8	46915	1,1
I	4383	0	19177	23560	4700	930	27330	-0,8	309909	1,3
SLO	238	488	443	1169	-66	0	1103	5,2	11782	7,9
HR	753	0	606	1359 <sup>2</sup>	127	7	1479	-4,4	14666	0,5
BiH	606	0	514	1120	120	0	1240	n.a.	n.a.	n.a.
FYROM	166	0	468	634 <sup>2</sup>	3	0	637	n.a.	n.a.	n.a.
SCG	1545	0	2107	3652	615	69	4198	n.a.	n.a.	n.a.
L	89	0	236	325	318	95	548	2,4	6066	-8,2
NL	0	338	8051	8389 <sup>2</sup>	1404	0	9793	0,6	108585	1,8
A	3112	0	2117	5229	-183	40	5006	-5,3	50400	0,5
P	2608	0	1338	3946 <sup>2</sup>	95	12	4029	5,7	40895	-0,3
CH	3188	2391	273	5852 <sup>2</sup>	10	135	5727	-0,4	58432	1,1
CZ	258	1964	4947	7169 <sup>2</sup>	-1054	49	6066	1,4	58604	-0,6
H	10	1237	2024	3271 <sup>2</sup>	235	0	3506	0,8	37219	1,1
PL <sup>5</sup>	308	0	14338	14646 <sup>2</sup>	-998	215	13433	2,7	134271	0,1
SK	500	1545	899	2944 <sup>2</sup>	-323	18	2603	1,0	26165	0,4
<b>UCTE</b>	<b>36329</b>	<b>74538</b>	<b>116516</b>	<b>227383<sup>2</sup></b>	<b>-1907</b>	<b>3438</b>	<b>222038</b>	<b>1,8</b>	<b>2176683</b>	<b>0,1</b>
RO	1330	491	3025	4846 <sup>2</sup>	-295	0	4551	n.a.	n.a.	n.a.
BG	403	1891	2063	4357 <sup>2</sup>	-402	56	3899	n.a.	n.a.	n.a.
West-UA	5	0	711	716 <sup>2</sup>	-238	0	478	n.a.	n.a.	n.a.

<sup>1</sup> Percentage as referred to total values in %

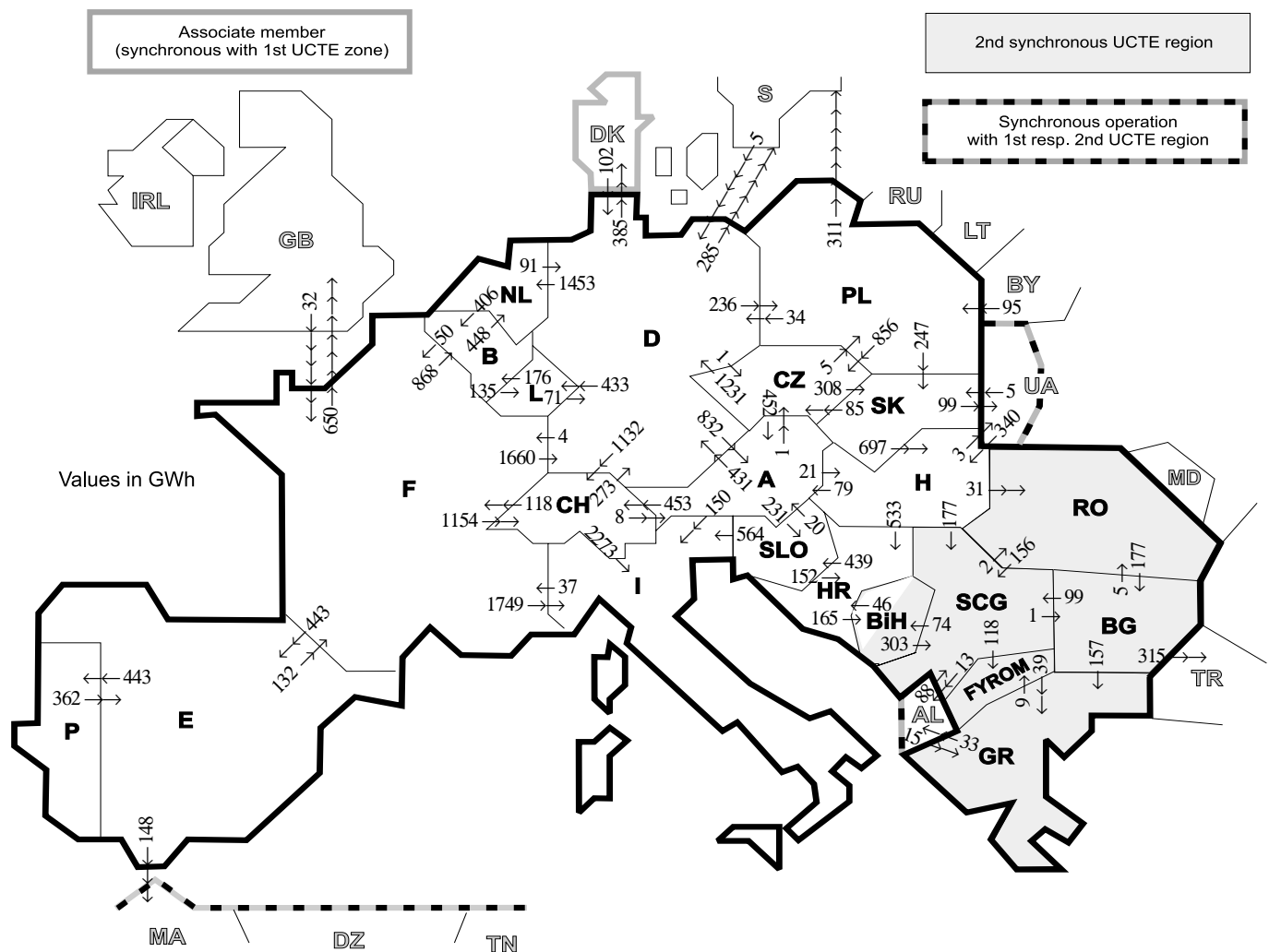
Countries	B	D	E	F	GR <sup>4</sup>	I	SLO	HR	BiH	FY- ROM	SCG	L	NL	A	P	CH	CZ	H	PL	SK	RO	BG	West- UA
Production	99	94	94	97	91	100	95	100	99	100	96	98	100	84	91	100	100	100	100	100	100	100	100
Consumption	100	94	94	97	91	100	95	100	99	100	96	99	100	90	91	100	100	100	100	100	100	100	100

<sup>2</sup> Including deliveries from industry

<sup>3</sup> Variation as compared to corresponding period of the previous year and representativity 100%

<sup>4</sup> The representativity of data referring to the whole country including the isolated systems of the Greek island is 93%.  
The representativity of data referring interconnected system on the mainland is 99%.

<sup>5</sup> Production values are gross values.



Exporting countries	Importing countries																	Σ Export									
	B	D	E	F	GR	I	SLO	HR	BIH	FY-ROM	SCG	L	NL	A	P	CH	CZ		H	PL	SK	RO	BG	West-UA	DK <sup>2</sup>	III <sup>1</sup>	
B	-	-	-	50	-	-	-	-	-	-	-	135	448	-	-	-	-	-	-	-	-	-	-	-	-	-	633
D	-	-	-	4	-	-	-	-	-	-	-	433	1453	832	-	1132	1	-	236	-	-	-	-	-	385	670	4761
E	-	-	-	132	-	-	-	-	-	-	-	-	-	-	443	-	-	-	-	-	-	-	-	-	-	148	723
F	868	1660	443	-	-	1749	-	-	-	-	-	-	-	-	-	1154	-	-	-	-	-	-	-	-	-	650	6524
GR	-	-	-	-	0	0	-	-	-	9	-	-	-	-	-	-	-	-	-	-	-	0	-	-	-	33	42
I	-	-	-	37	0	0	-	-	-	-	-	-	-	0	0	-	-	-	-	-	-	-	-	-	-	-	37
SLO	-	-	-	-	-	564	-	152	-	-	-	-	-	20	-	-	-	-	-	-	-	-	-	-	-	-	736
HR	-	-	-	-	-	-	439	165	-	0	-	-	-	-	-	-	-	0	-	-	-	-	-	-	-	-	604
BIH	-	-	-	-	-	-	46	165	-	303	-	-	-	-	-	-	-	-	-	-	-	-	-	-	-	-	349
FYROM	-	-	-	-	39	-	-	-	-	0	-	-	-	-	-	-	-	-	-	-	-	0	-	-	-	-	39
SCG	-	-	-	-	-	-	0	74	118	-	-	-	-	-	-	-	-	0	-	-	2	1	-	-	-	13	208
L	176	71	-	-	-	-	-	-	-	-	-	-	-	-	-	-	-	-	-	-	-	-	-	-	-	-	247
NL	406	91	-	-	-	-	-	-	-	-	-	-	-	-	-	-	-	-	-	-	-	-	-	-	-	-	497
A	-	431	-	-	-	150	231	-	-	-	-	-	-	-	-	453	1	21	-	-	-	-	-	-	-	-	1287
P	-	-	362	-	-	-	-	-	-	-	-	-	-	-	-	-	-	-	-	-	-	-	-	-	-	-	362
CH	-	273	-	118	-	2273	-	-	-	-	-	-	-	8	-	-	-	-	-	-	-	-	-	-	-	-	2672
CZ	-	1231	-	-	-	-	-	-	-	-	-	-	-	452	-	-	-	-	5	308	-	-	-	-	-	-	1996
H	-	-	-	-	-	-	533	-	-	-	177	-	-	79	-	-	-	-	-	0	31	-	3	-	-	3	823
PL	-	34	-	-	-	-	-	-	-	-	-	-	-	-	-	-	856	-	-	247	-	-	0	-	0	0	1448
SK	-	-	-	-	-	-	-	-	-	-	-	-	-	-	-	-	85	697	0	-	-	-	-	99	-	99	881
RO	-	-	-	-	-	-	-	-	-	156	-	-	-	-	-	-	-	0	-	-	-	177	-	-	-	0	333
BG	-	-	-	-	157	-	-	-	-	0	99	-	-	-	-	-	-	-	-	-	-	5	-	-	-	315	576
West-UA	-	-	-	-	-	-	-	-	-	-	-	-	-	-	-	-	-	-	-	-	-	-	-	-	-	-	345
DK <sup>2</sup>	-	102	-	-	-	-	-	-	-	-	-	-	-	-	-	-	-	-	340	0	5	0	-	-	-	-	102
III <sup>1</sup>	-	107	0	32	15	-	-	-	-	-	88	-	-	-	-	-	-	-	-	-	340	95	5	0	0	-	682
Σ Import	1450	3898	805	373	211	4736	670	731	239	127	823	568	1901	1391	443	2739	943	1058	336	560	38	178	102	385	2242	26460	

Sum of physical energy flows between UCTE countries = 23536 GWh

Total physical energy flows = 26460 GWh

<sup>1</sup> III = Third countries: Albania, Belarus, Denmark, Great Britain, Morocco, Republic of Moldova, Sweden, Republic of Turkey and West-Ukraine

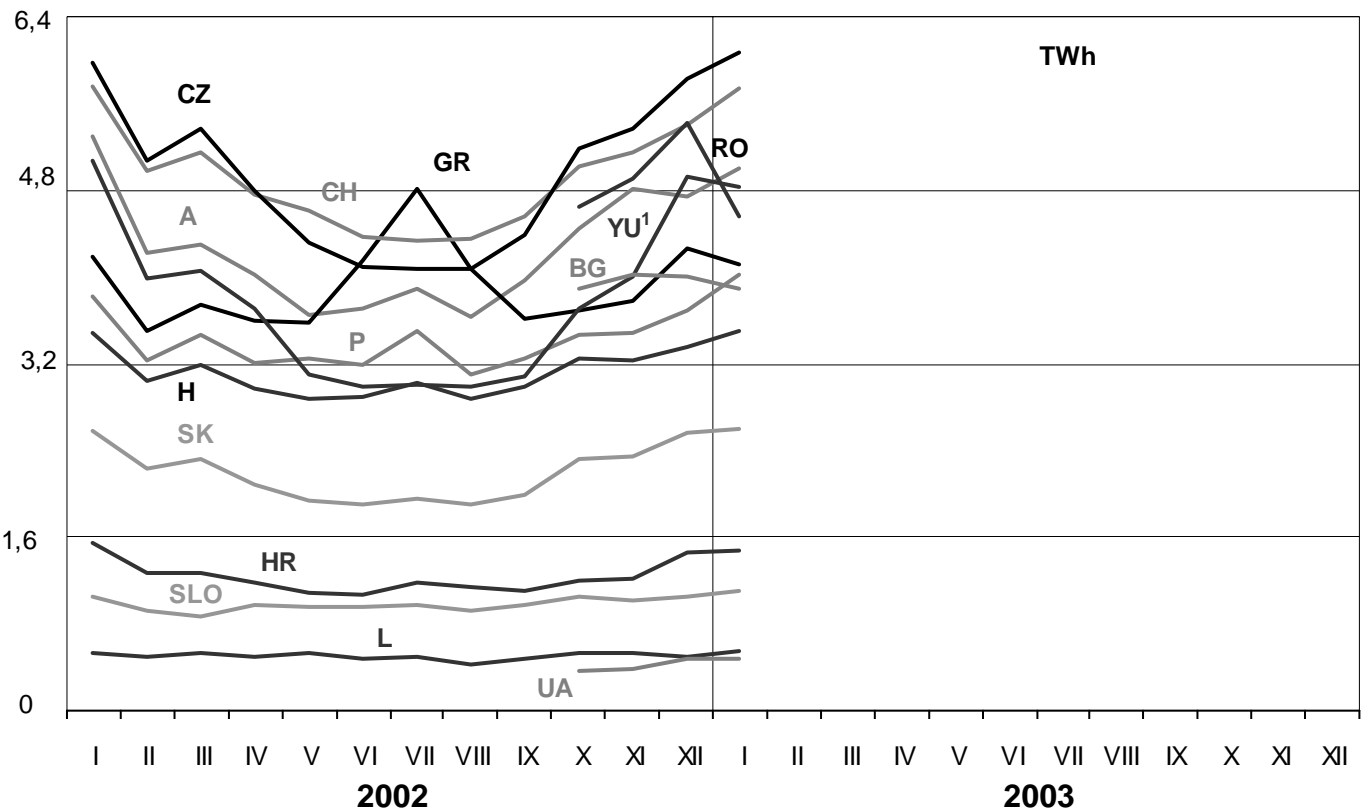
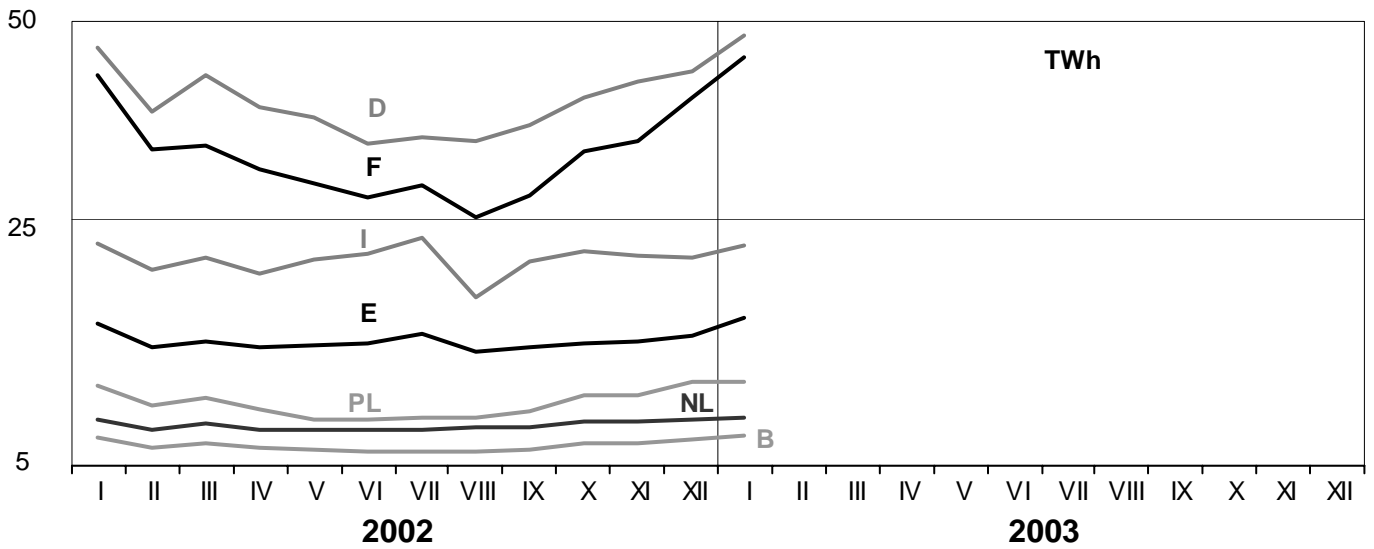
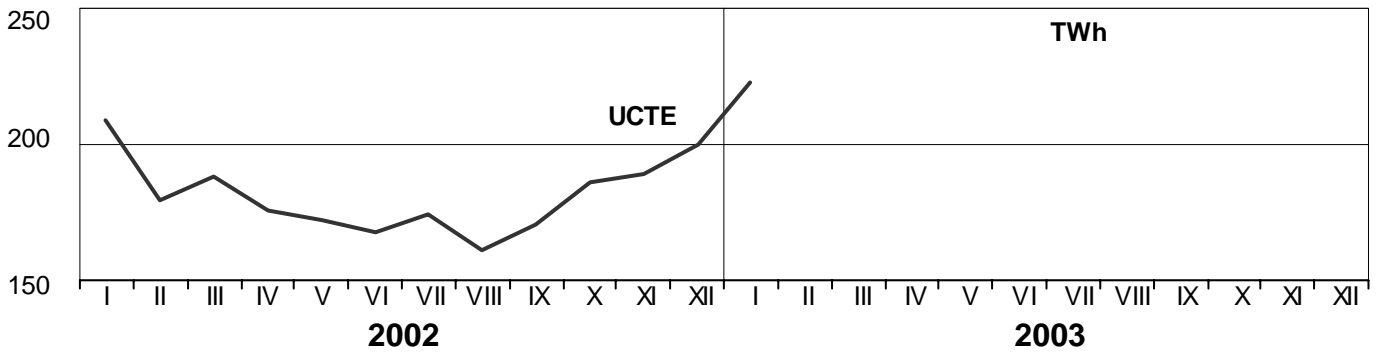
<sup>2</sup> Denmark (Jutland)

These physical energy flows were measured on the cross-frontier transmission lines (≥ 110 kV) listed in table 9 of the Statistical Yearbook. These values may differ from the official statistics and the exchange balances in chapter 1.

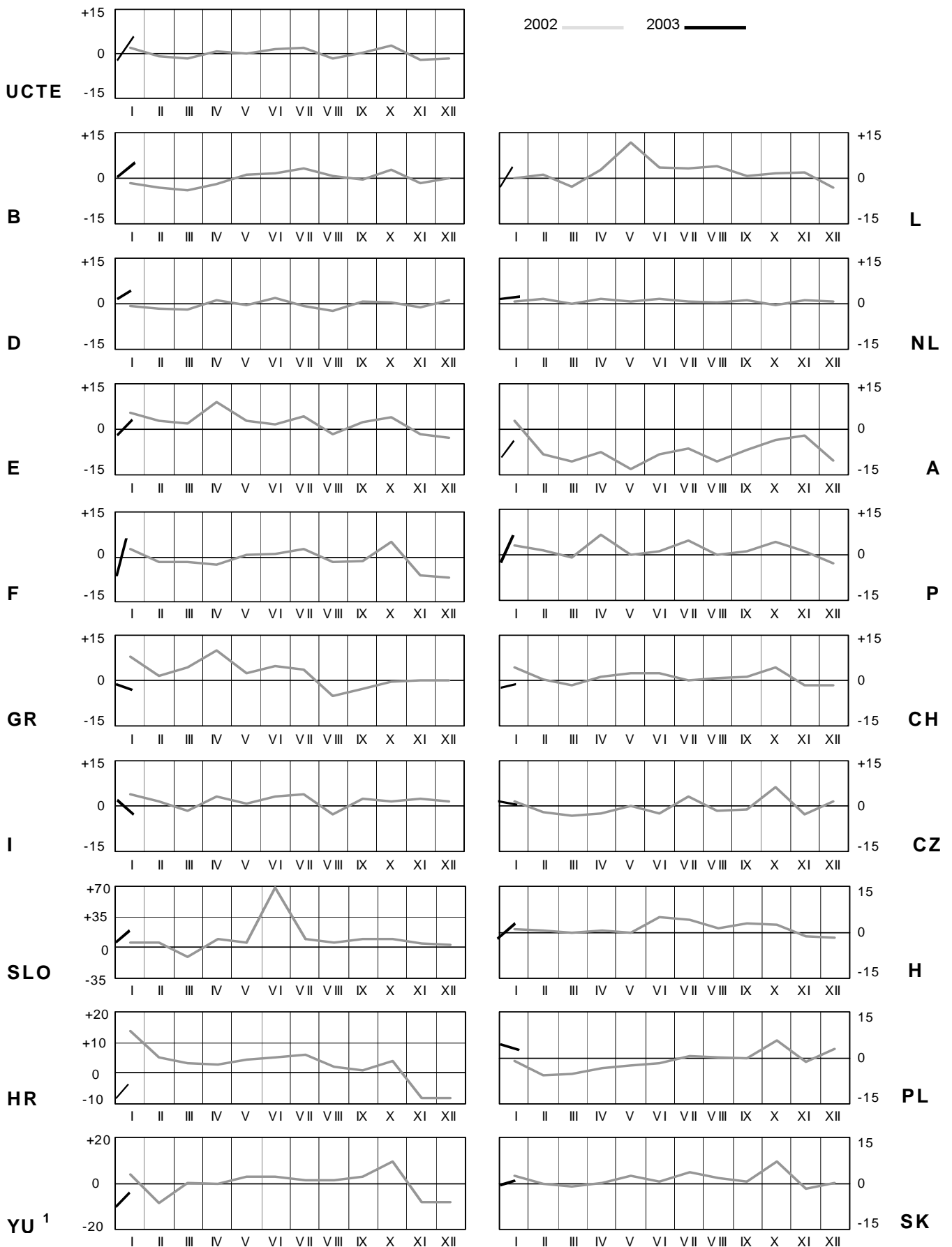
# 3

## Monthly consumption

January 2003



<sup>1</sup> YU = FRY + FYROM (Federal Republic of Yugoslavia and Former Yugoslav Republic of Macedonia)

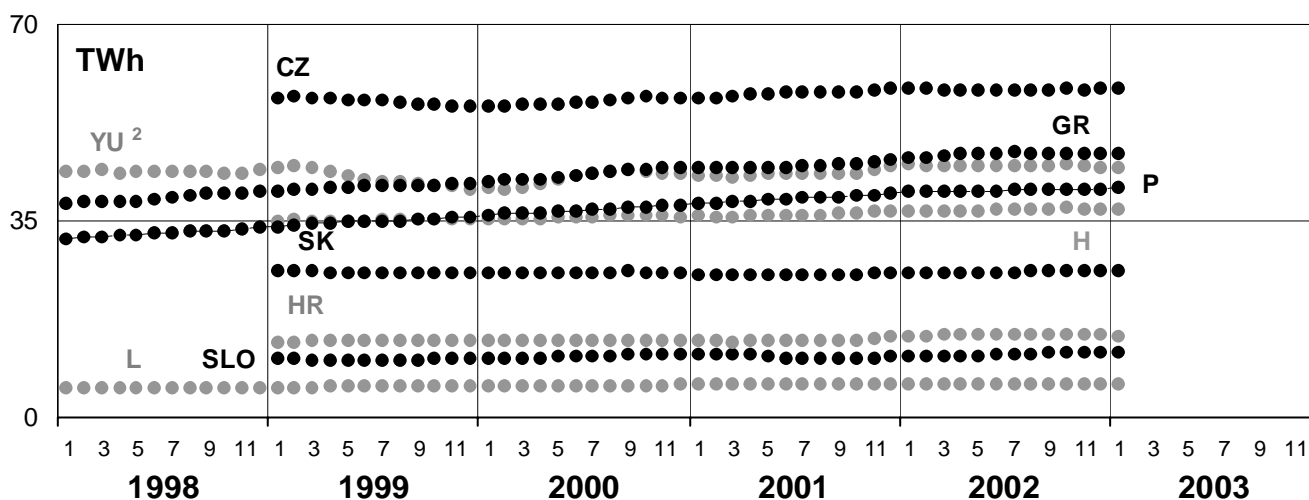
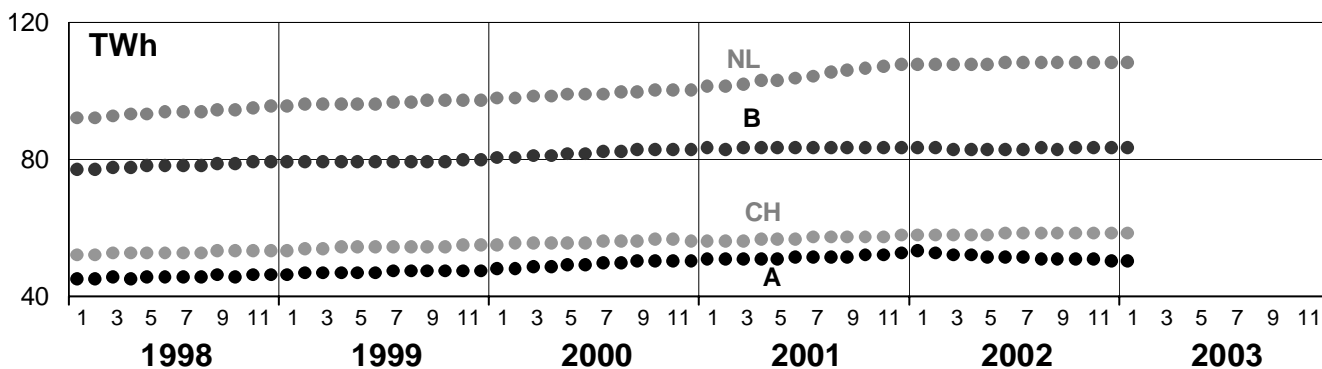
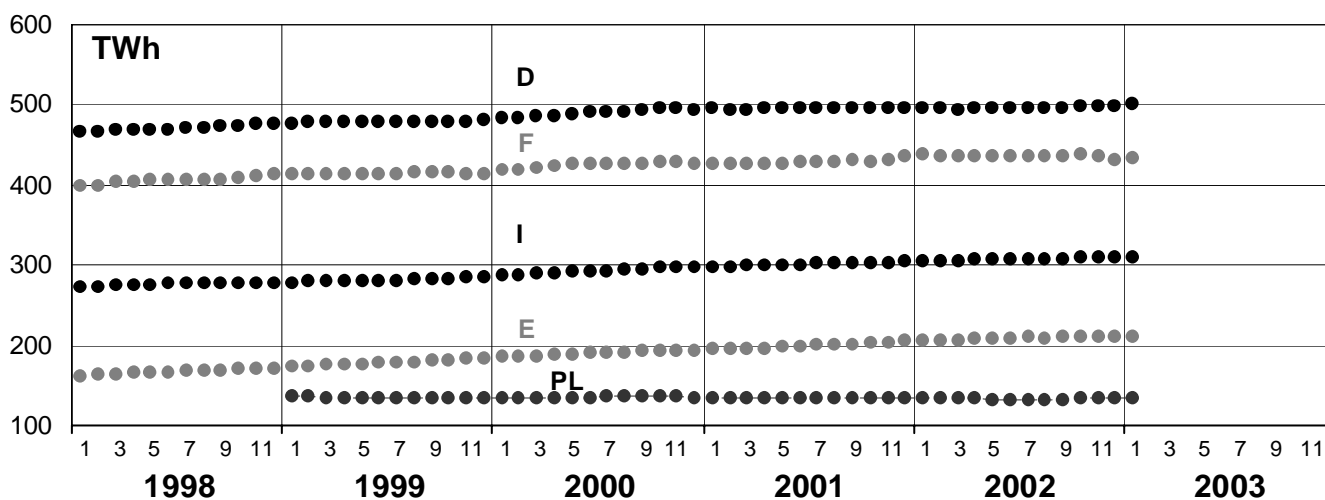
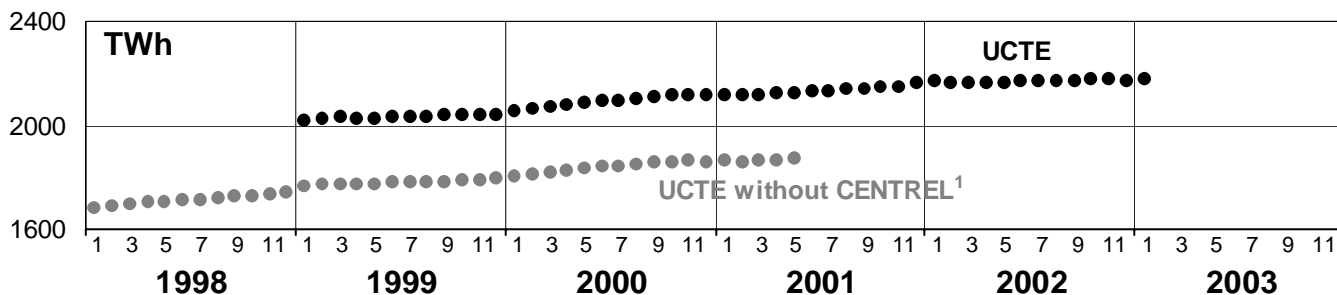


<sup>1</sup>YU = FRY + FYROM (Federal Republic of Yugoslavia and Former Yugoslav Republic of Macedonia)

# 5

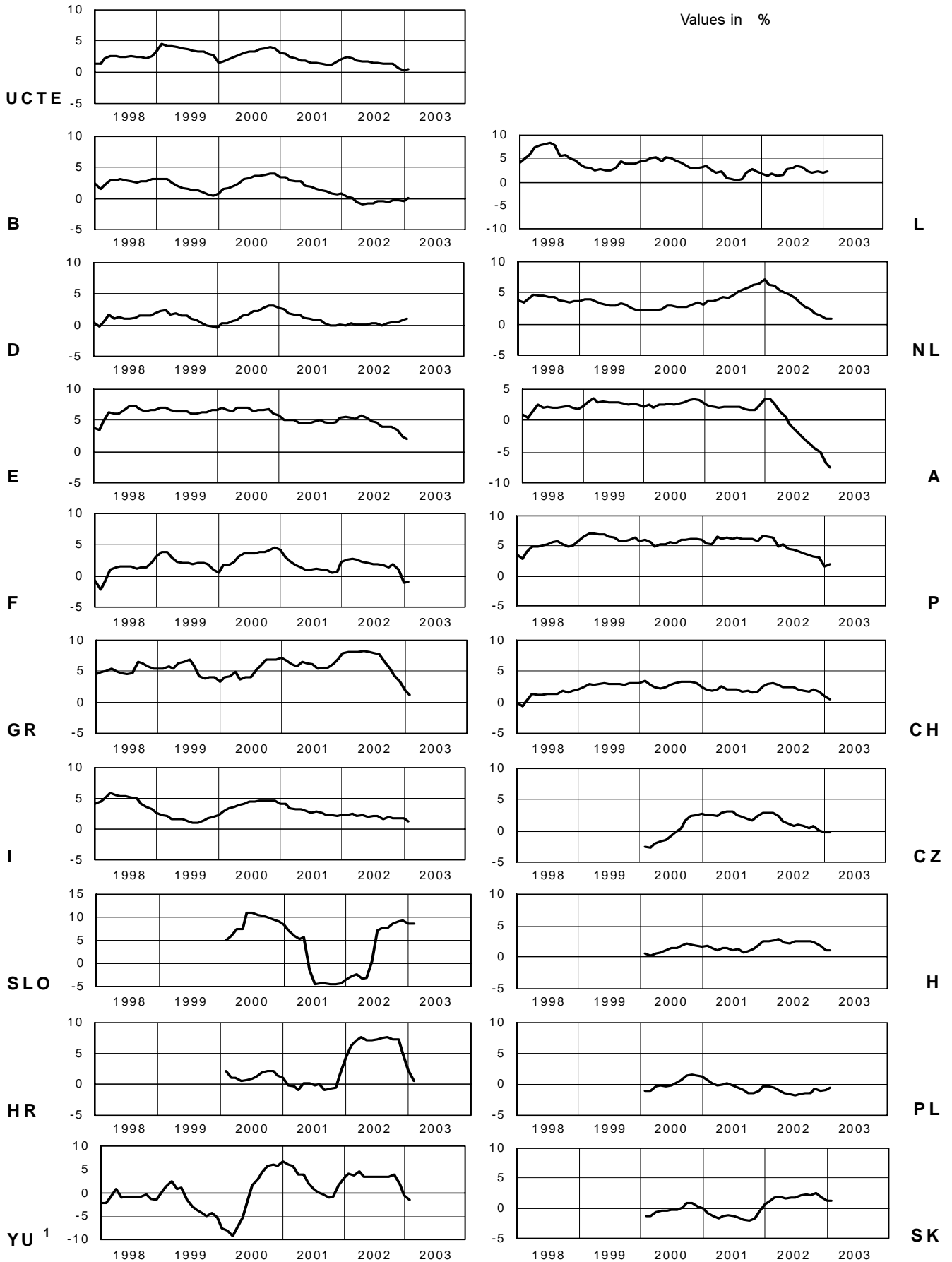
## Consumption of last 12 months

January 2003



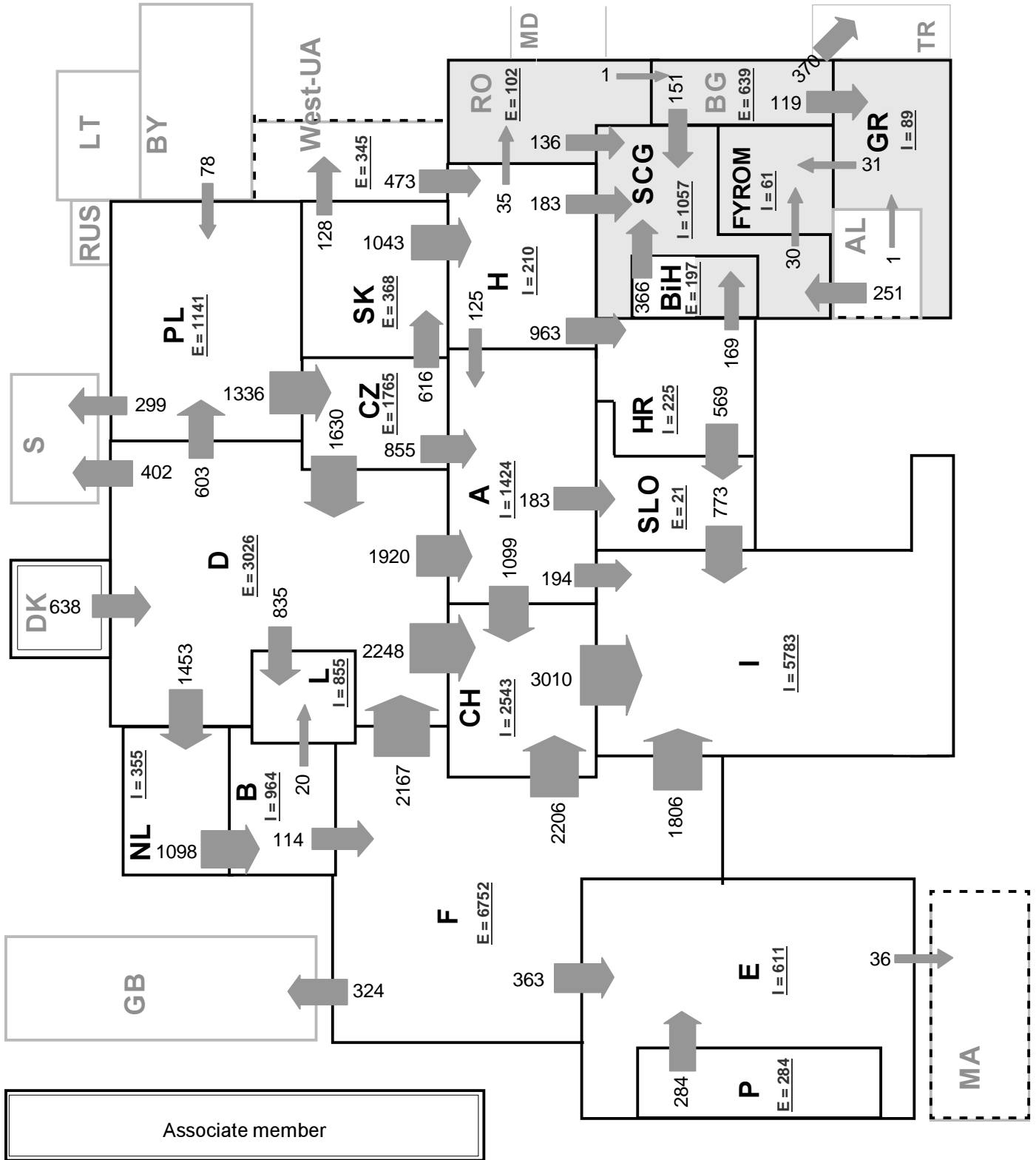
<sup>1</sup> CENTREL countries CZ, H, PL, SK member of UCTE from May 2001

<sup>2</sup> YU = FRY + FYROM (Federal Republic of Yugoslavia and former Yugoslav Republic of Macedonia)



<sup>1</sup> YU = FRY + FYROM (Federal Republic of Yugoslavia and Former Yugoslav Republic of Macedonia)





Associate member

Synchronous operation with 1st resp. 2nd UCTE region

2nd synchronous UCTE region

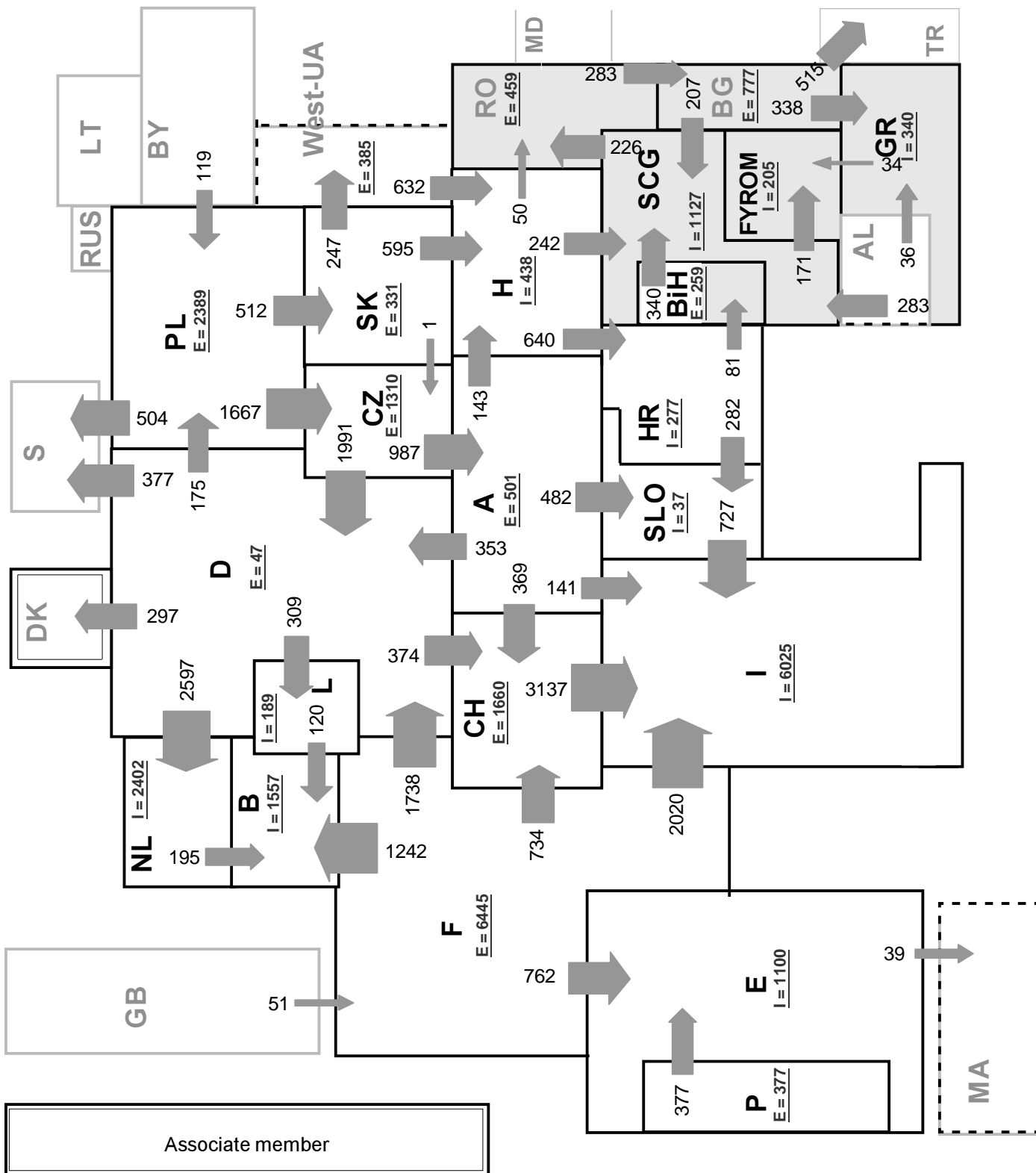
**Sum of load flows in MW:**

UCTE = 28921      Total = 31921

\* Central European Time (CET)

I = Import balance

E = Export balance



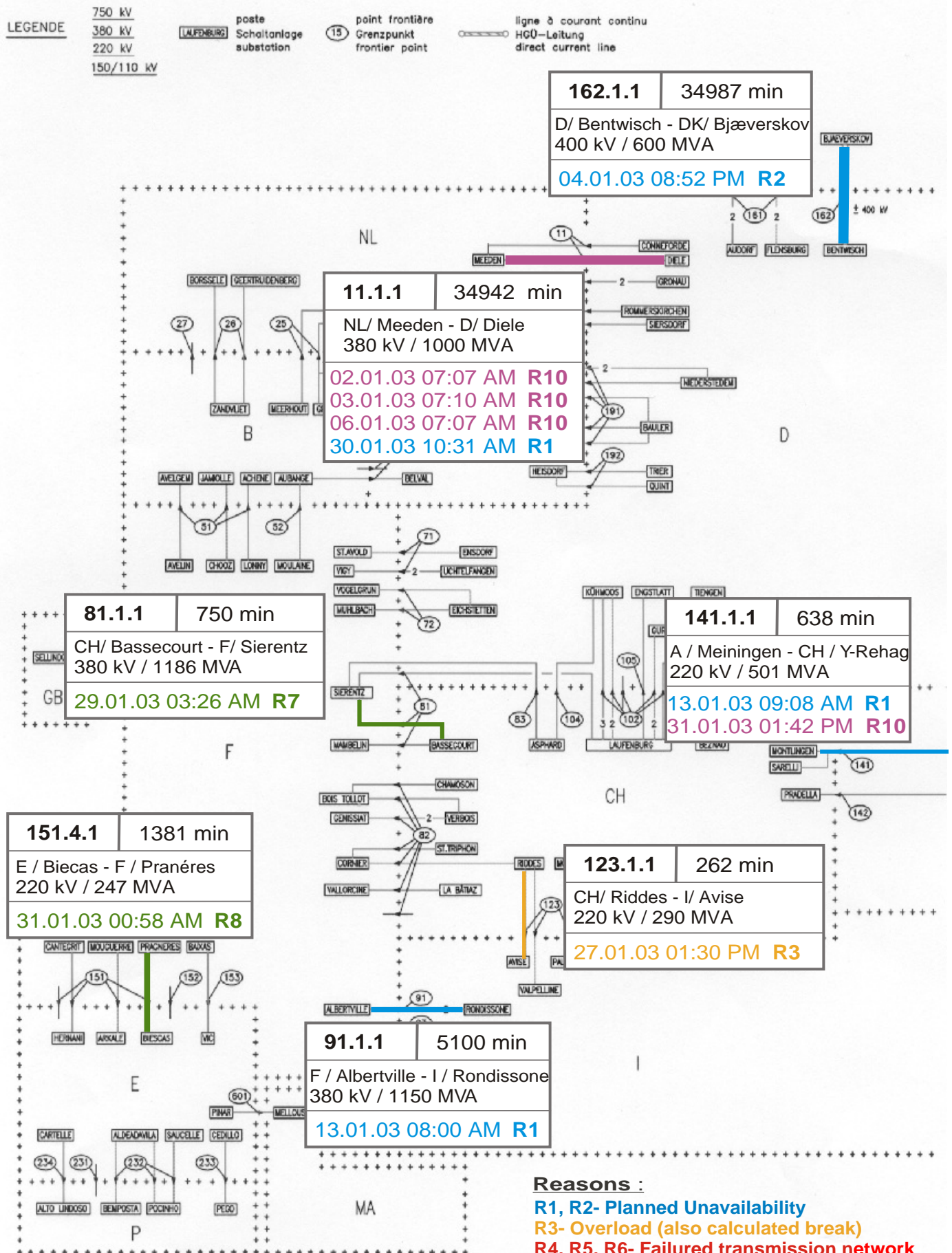
**Sum of load flows in MW:**

UCTE = 24642      Total = 27742

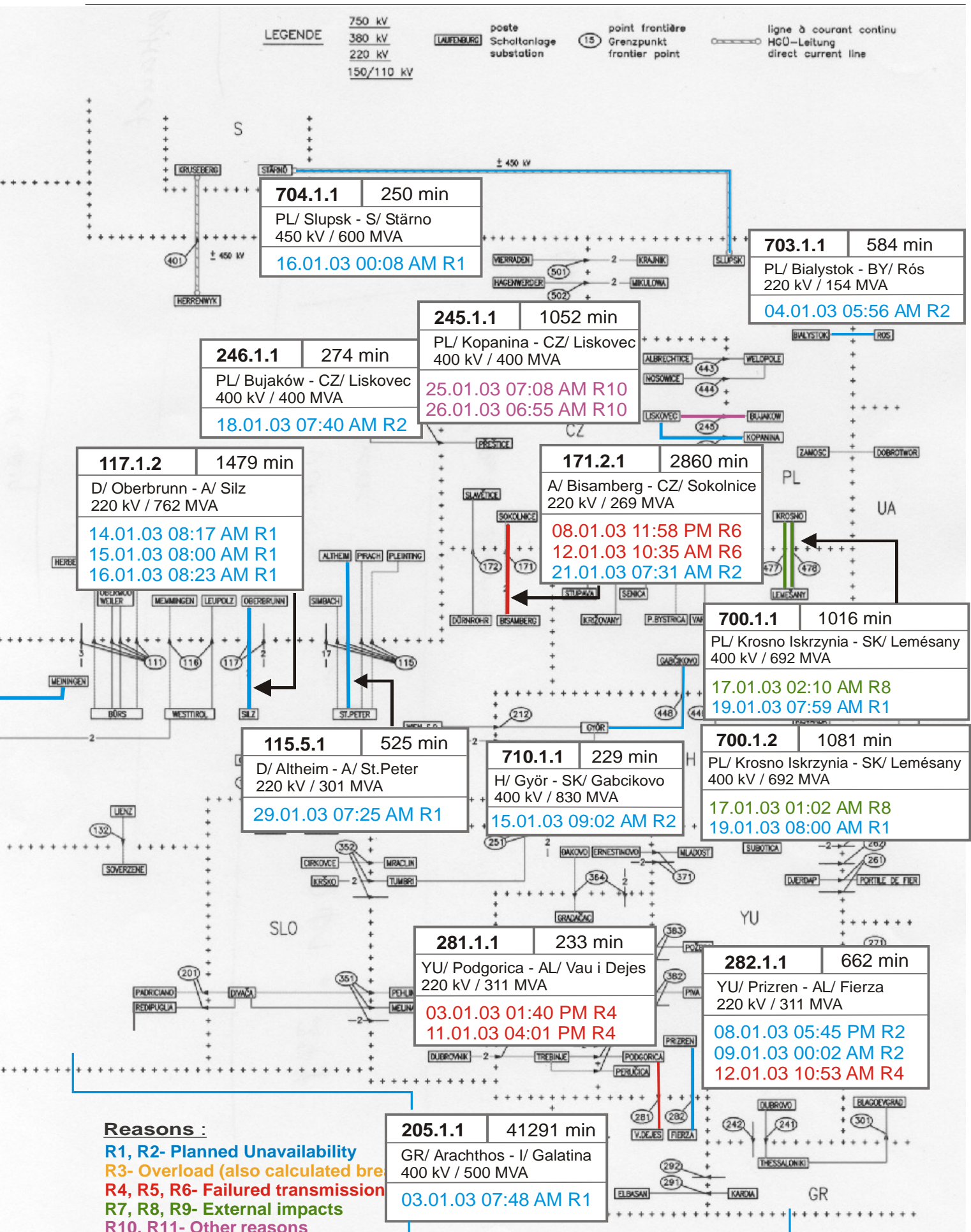
\* Central European Time (CET)

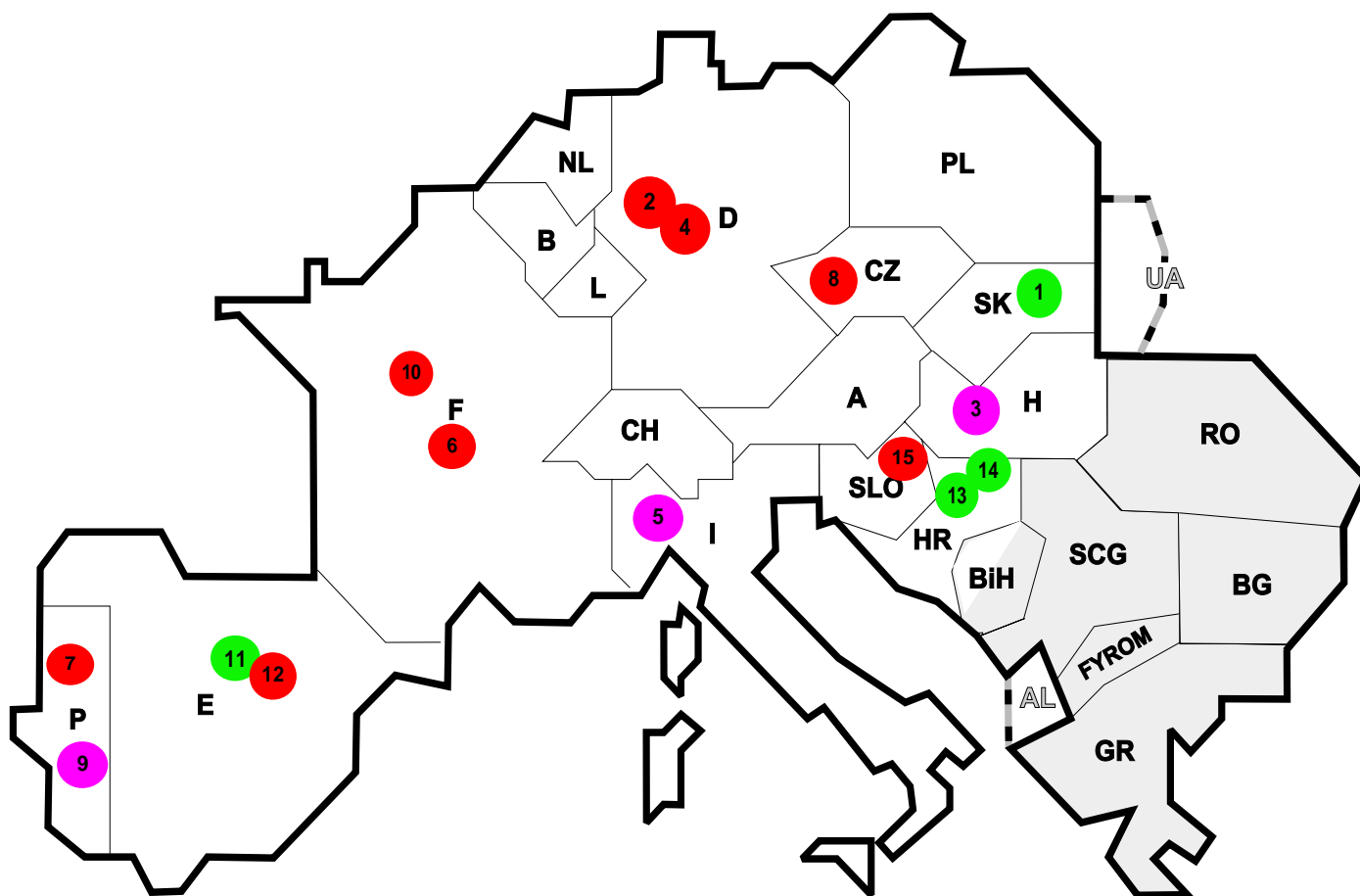
I = Import balance

E = Export balance



- Reasons :**
- R1, R2- Planned Unavailability
  - R3- Overload (also calculated break)
  - R4, R5, R6- Failed transmission network
  - R7, R8, R9- External impacts
  - R10, R11- Other reasons





Reasons:

- R3**      **Overload**
- R4, R5, R6**    **Failure in the transmission network**
- R7, R8, R9**    **External impacts (animals...)**
- R10, R11**    **Other reasons**

Nbr	Country	Substation	Reason	Energie not supplied [ MWh ]	Total loss of power [ MW ]	Restoration time [ min ]	Equivalent time of interruption <sup>1</sup>
1	SK	V. Dur	R7	8797	440	1200	8,84
2	D	Weisw eiler	R5	1430	600	143	0,63
3	H	Mátra 220 kV	R10	343	311	66	4,39
4	D	Oberzier	R5	95	270	21	0,28
5	I	Villavalle	R10	69	230	18	0,39
6	F	Mezerolles	R6	63	531	10	0,64
7	P	Vila Cha	R5	25	0	10	0,00
8	CZ	Mirovka	R5	10	0	6	0,00
9	P	Mogadouro	R11	7	0	62	0,00
10	F	Menus	R5	2	39	4	0,05
11	E	Lubian	R8	1	0	2	0,00
12	E	Lubian	R6	0	27	7	0,07
13	HR	Brinje	R9	0	0	34162	0,00
14	HR	Velebit	R9	0	0	7462	0,00
15	SLO	Podlog	R6	0	0	188	0,00

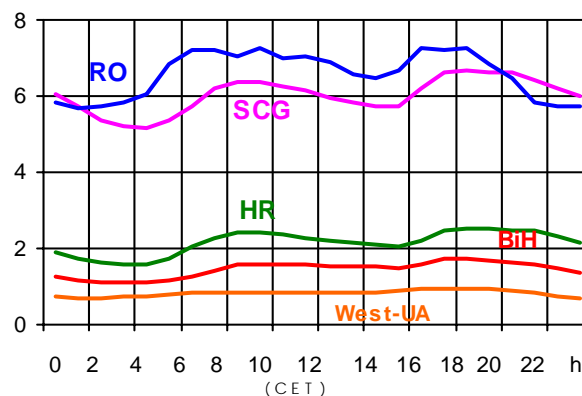
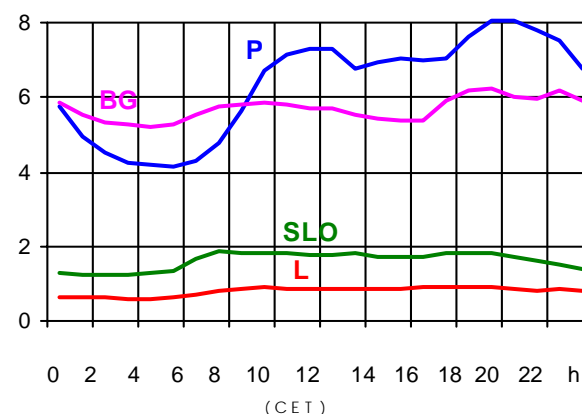
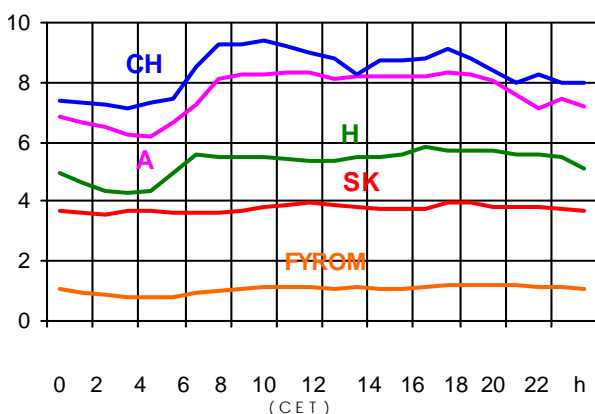
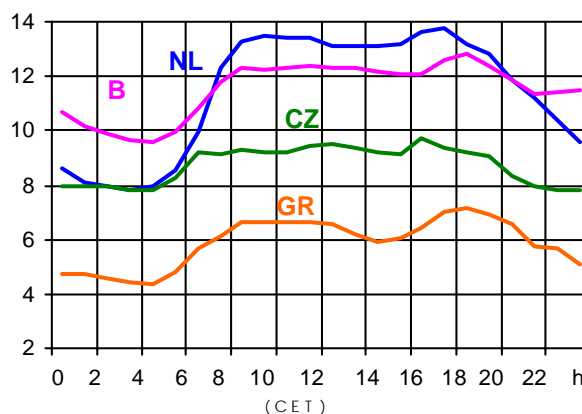
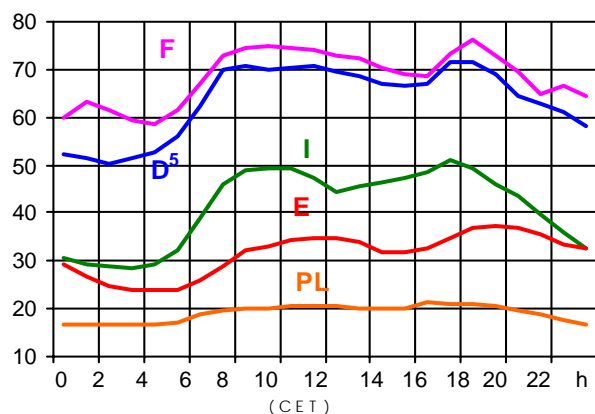
<sup>1</sup> ( year [in min] \* power loss) / consumption last 12 months

Control area	Prog_exp	Prog_imp	Prog_exp3	Prog_imp3	Prog_exp11	Prog_imp11
B	424846	1245382	250	1266	300	1596
D	2770981	2895853	4007	2308	3968	4765
E	385322	404584	49	638	78	1107
F	7770275	1582621	8912	2107	9540	3128
GR	23548	189040	0	160	0	268
I	36514	4735910	0	5783	0	6025
SLO	418275	361761	504	449	423	449
HR	193000	308175	270	468	176	467
BiH	n.a.	n.a.	n.a.	n.a.	n.a.	n.a.
FYROM	13670	98822	0	81	0	205
YU	327273	946175	284	1289	288	1420
NL	480169	946175	1228	1581	582	2981
A	750222	467054	1279	587	949	767
P	145629	238220	250	0	544	184
CH	2552486	2639034	3118	5552	3262	1534
CZ	1732738	631919	2582	718	2487	1087
H	644352	865329	829	1027	1009	1392
PL	1147333	113410	1104	120	2350	215
SK	591999	212959	664	242	933	521
RO	366000	28000	355	30	620	50
BG	n.a.	n.a.	n.a.	n.a.	n.a.	n.a.
UA	237632	0	293	0	388	0

- Control areas can differ from national borders ( i.e. German block which includes parts of A, L and DK ).
- Values are calculated on an hourly base ( MWh ).
- This values are not the provisional values entered in the VULCANUS system, but the definitive values after an eventual correction during the actual date.
- Prog\_exp: Sum of all positive values of every hour of every border
- Prog\_imp: Sum of all negative values of every hour of every border
- Prog\_exp3: Sum of all positive values the third Wednesday from 02:00 to 03:00 a.m.
- Prog\_imp3: Sum of all negative values the third Wednesday from 02:00 to 03:00 a.m.
- Prog\_exp11: Sum of all positive values the third Wednesday from 10:00 to 11:00 a.m.
- Prog\_imp11: Sum of all negative values the third Wednesday from 10:00 to 11:00 a.m.

### Consumption hourly load curves<sup>1</sup> on 15.01.03

Values in GW



	Peak load MW	$\Delta$ % <sup>2</sup>	Cons_load_repr <sup>1</sup> %	Parallel load <sup>3</sup> MW
B	12824	3,1	100	10700
D	71800	1,0	91	77200
E	37163	10,0	94	33478
F	76097	5,7	97	81805
GR <sup>4</sup>	7126	0,3	93	6307
I	51030	0,2	100	44005
SLO	1855	4,1	95	1762
HR	2507	-4,4	100	2349
BiH	1739	n.a.	100	1845
FYROM	1195	n.a.	100	925
SCG	6707	n.a.	96	5045
L	918	2,9	99	864
NL	13766	1,1	100	11037
A	8337	0,6	82	7260
P	8043	24,0	92	7097
CH	9369	-1,0	100	10992
CZ	9748	3,6	100	11043
H	5852	-0,4	100	5012
PL	21394	-1,6	100	22283
SK	3984	-4,2	100	4672
<b>UCTE</b>	<b>359860</b>	<b>3,0</b>		<b>359178</b>
DK <sup>6</sup>				1850
RO	7265	n.a.	100	7006
BG	6226	n.a.	100	6491
West-UA	943	n.a.	100	1226

<sup>1</sup> Percentage as referred to total values in %

<sup>2</sup> Variation as compared to corresponding month of the previous year

<sup>3</sup> Including autoproduction

<sup>4</sup> The representativity of data referring to the whole country, including the systems of the Greek islands, is 93%. The representativity of data to the interconnected system is 99%.

<sup>5</sup> Values estimated on the basis of former data from the German Federal Office for Statistics

<sup>6</sup> Denmark (Jutland)



## Contact

Boulevard Saint-Michel, 15  
B-1040 Brussels - Belgium  
Tel +3227416940 - Fax +3227416949

[info@ucte.org](mailto:info@ucte.org)  
[www.ucte.org](http://www.ucte.org)