



October 2002

Monthly provisional values
union for the co-ordination of transmission of electricity

Table of contents		Page
1	Electricity supply situation of the countries	2
2	Physical energy flows	3
3	Monthly consumption	4
4	Monthly consumption variation	5
5	Consumption of last 12 months	6
6	Variation of the last 12 months' consumption	7
7	Load flows (night)	8
8	Load flows (day)	9
9	Unavailability of international tie lines (major events)	10
10	Network reliability (major events)	12
11	Scheduled exchanges	13
12	Load on the 3 rd Wednesday	14

1

Electricity supply situation of the countries

October 2002

Countries	B	D	E	F	GR	I	SLO	HR	YU ⁴	L	NL	A	P	CH	CZ	H	PL	SK	UCTE
Net production in GWh¹																			
Hy	112	2064	1691	5084	290	4002	293	596	1483	85	0	3192	470	2490	196	20	301	416	22785
Tn	3512	13833	5398	34997	-	-	502	0	0	0	225	0	0	2394	1520	1276	0	1597	65254
Tc	2822	28008	10571	3573	3283	18812	408	430	1878	220	8167	1505	2756	205	4399	1597	12871	793	102298
Total	6446 ²	43905 ²	17660 ²	43654	3573 ²	22814	1203	1026 ²	3361	305	8392 ²	4697	3226 ²	5089 ²	6115 ²	2893 ²	13172 ²	2806 ²	190337 ²
Exchange balance in GWh																			
Imp. = +	926	-1131	298	-6192	201	4840	-158	179	446	336	1276	-162	302	110	-894	344	-841	-455	-575
Exp. = -																			
Consumption of pumps in GWh																			
	125	516	576	699	90	885	0	11	95	102	0	93	57	180	39	0	191	29	3688
Consumption in GWh¹																			
monthly																			
	7247	42258	17382	36763	3684	26769	1045	1194	3712	539	9668	4442	3471	5019	5182	3237	12140	2322	186074
Δ ³ [%]	2,6	1,4	4,1	4,8	-0,6	1,6	9,7	4,2	9,6	1,5	2,5	-3,4	4,5	4,5	6,5	2,7	5,7	7,1	3,1
last 12 months																			
	83353	498021	210862	439879	46999	309171	11555	14968	45395	6059	109187	51146	40745	58629	58595	37306	133675	26176	2181721
Δ ³ [%]	-0,1	0,6	3,9	2,4	4,3	1,7	8,2	7,3	4,0	1,9	2,5	-4,4	3,2	2,1	0,9	2,3	-0,8	2,5	1,7
Energy capability factor																			
	-	1,53	-	-	0,87	0,80	0,90	1,70	2,20	-	-	-	1,04	0,91	-	-	-	1,58	1,1

¹ Percentage as referred to total values in %

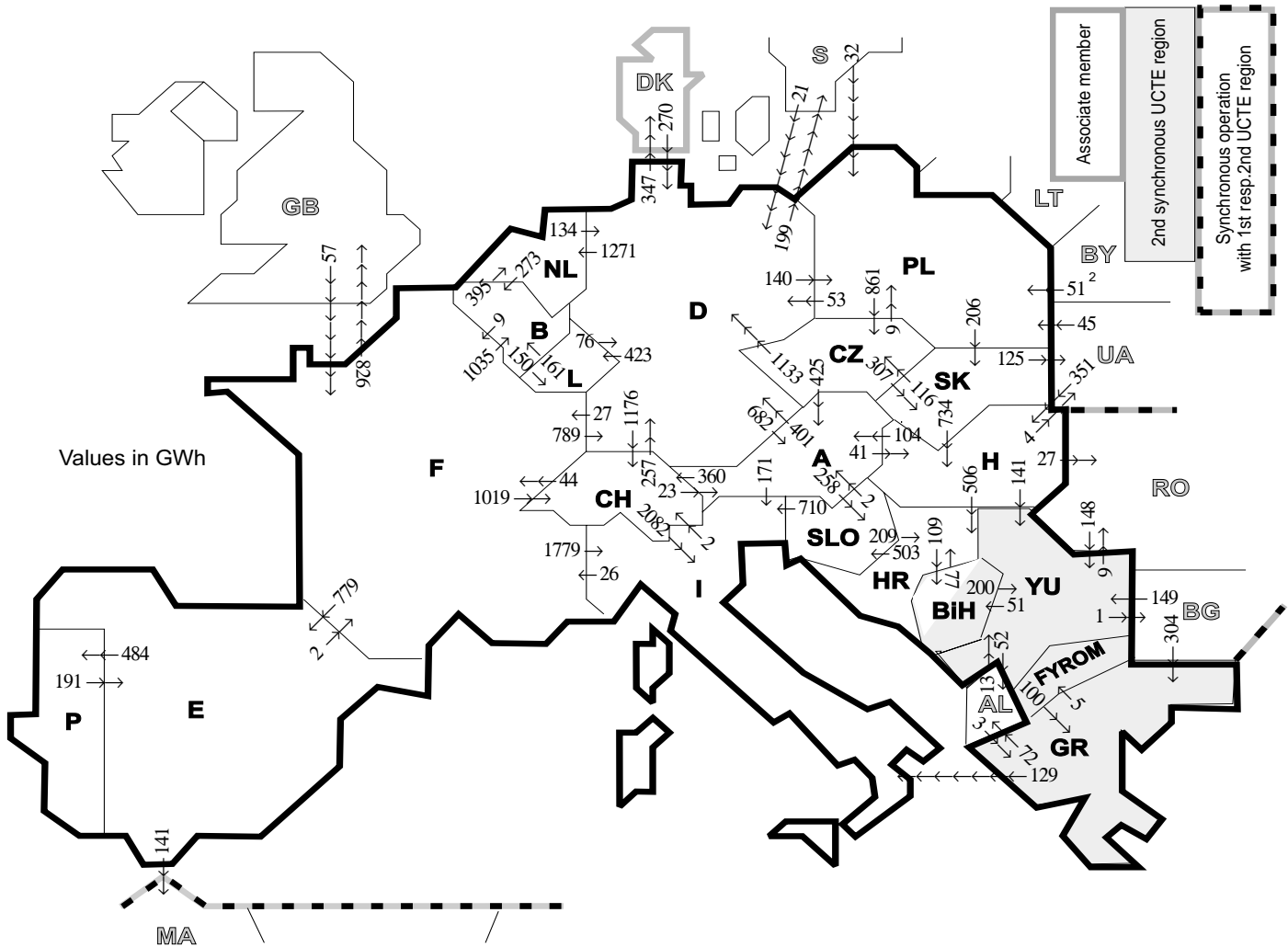
Countries	B	D	E	F	GR ⁶	I	SLO	HR	YU ⁴	L	NL	A	P	CH	CZ	H	PL	SK
Production	100	93	94	97	91	100	95	100	96	98	100	84	91	100	100	100	100	100
Consumption	100	93	94	97	91	100	95	100	96	99	100	90	91	100	100	100	100	100

² Including deliveries from industry

³ Variation as compared to corresponding period of the previous year and representativity 100%

⁴ YU = FRY + FYROM (Federal Republic of Yugoslavia and Former Yugoslav Republic of Macedonia)

⁵ The representativity of data referring to the whole country including the isolated systems of the Greek island is 91%. The representativity of data referring to the mainland interconnected system is 98%.



Exporting countries	Importing countries																			Σ Export		
	B	D	E	F	GR	I	SLO	HR	BiH	YU	L	NL	A	P	CH	CZ	H	PL	SK		III ¹	
B	-	-	-	9	-	-	-	-	-	-	150	395	-	-	-	-	-	-	-	-	554	
D	-	-	-	27	-	-	-	-	-	-	423	1271	682	-	1176	0	-	140	-	546	4265	
E	-	-	-	2	-	-	-	-	-	-	-	-	484	-	-	-	-	-	-	141	627	
F	1035	789	779	-	-	1779	-	-	-	-	-	-	-	484	-	-	-	-	-	-	826	6227
GR	-	-	-	-	-	129	-	-	-	5	-	-	-	-	-	-	-	-	-	-	72	206
I	-	-	-	26	0	-	0	-	-	-	-	-	0	-	2	-	-	-	-	-	-	28
SLO	-	-	-	-	-	710	-	209	-	-	-	-	2	-	-	-	-	-	-	-	-	921
HR	-	-	-	-	-	-	503	-	109	0	-	-	-	-	-	-	0	-	-	-	-	612
BiH	-	-	-	-	-	-	-	77	-	200	-	-	-	-	-	-	-	-	-	-	-	277
YU	-	-	-	-	100	-	-	0	51	-	-	-	-	-	-	-	0	-	-	-	59	210
L	161	76	-	-	-	-	-	-	-	-	-	-	-	-	-	-	-	-	-	-	-	237
NL	273	134	-	-	-	-	-	-	-	-	-	-	-	-	-	-	-	-	-	-	-	407
A	-	401	-	-	-	171	258	-	-	-	-	-	-	-	360	0	41	-	-	-	-	1231
P	-	-	191	-	-	-	-	-	-	-	-	-	-	-	-	-	-	-	-	-	-	191
CH	-	257	-	44	-	2082	-	-	-	-	-	23	-	-	360	0	41	-	-	-	-	2406
CZ	-	1133	-	-	-	-	-	-	-	-	-	-	425	-	-	-	-	6	307	-	-	1871
H	-	-	-	-	-	-	-	506	-	141	-	-	104	-	-	-	-	-	0	31	-	782
PL	-	53	-	-	-	-	-	-	-	-	-	-	-	-	-	861	-	-	206	0	-	1120
SK	-	-	-	-	-	-	-	-	-	-	-	-	-	-	-	116	734	0	-	125	-	975
III ¹	-	291	-	57	307	-	-	-	-	310	-	-	-	-	-	-	351	128	0	-	-	1444
Σ Import	1469	3134	970	165	407	4871	761	792	160	656	573	1666	1236	484	2557	977	1126	274	513	1800	-	24591

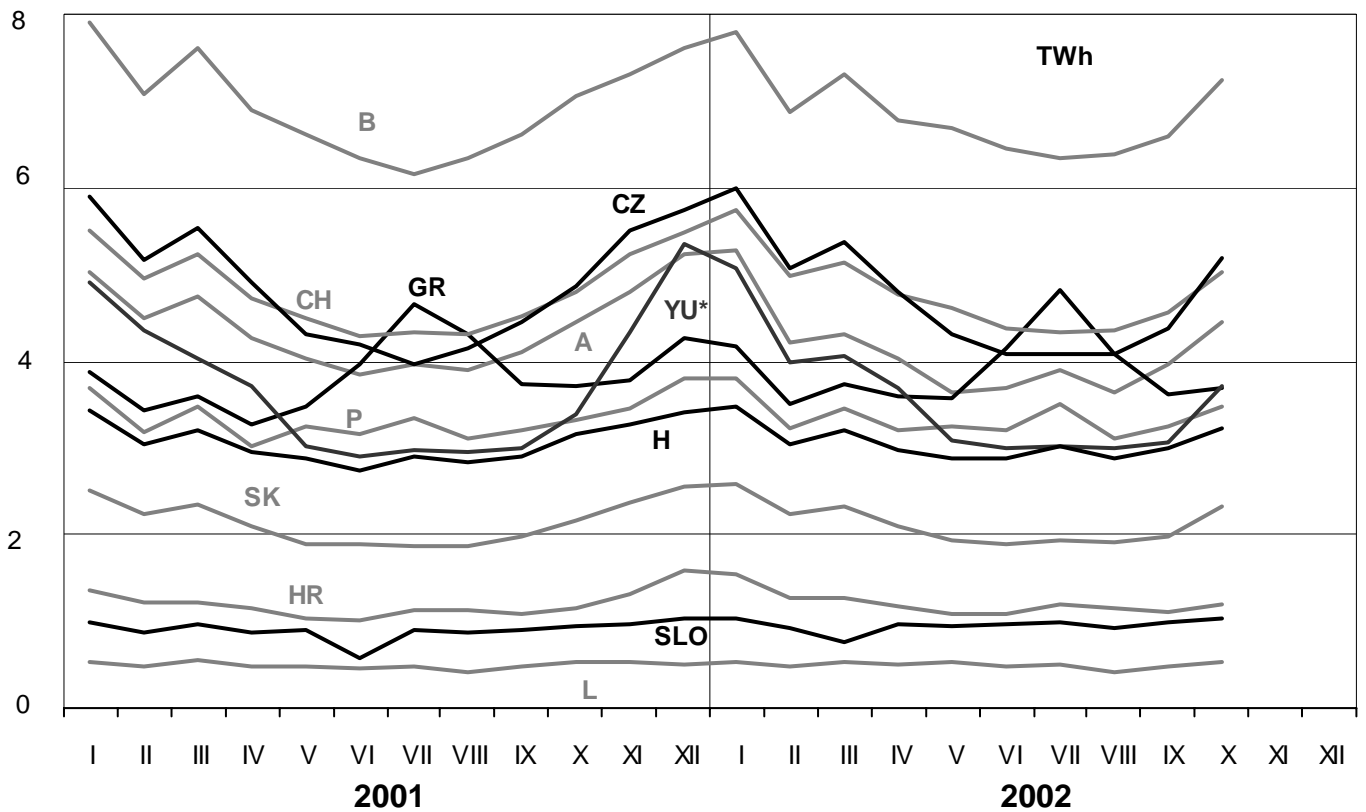
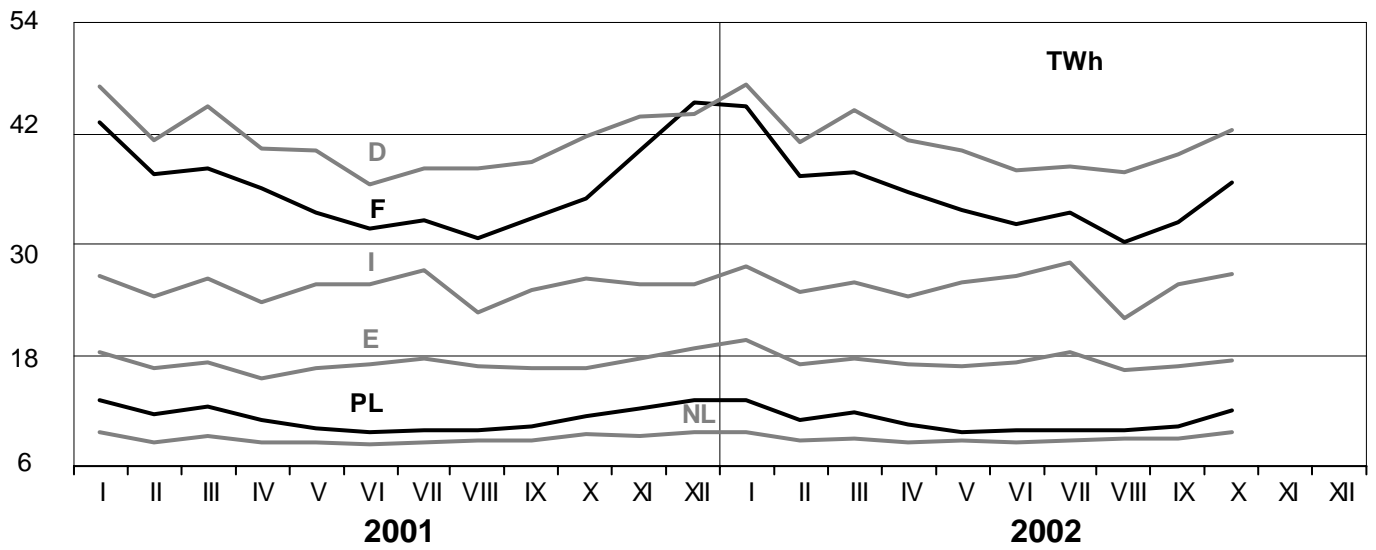
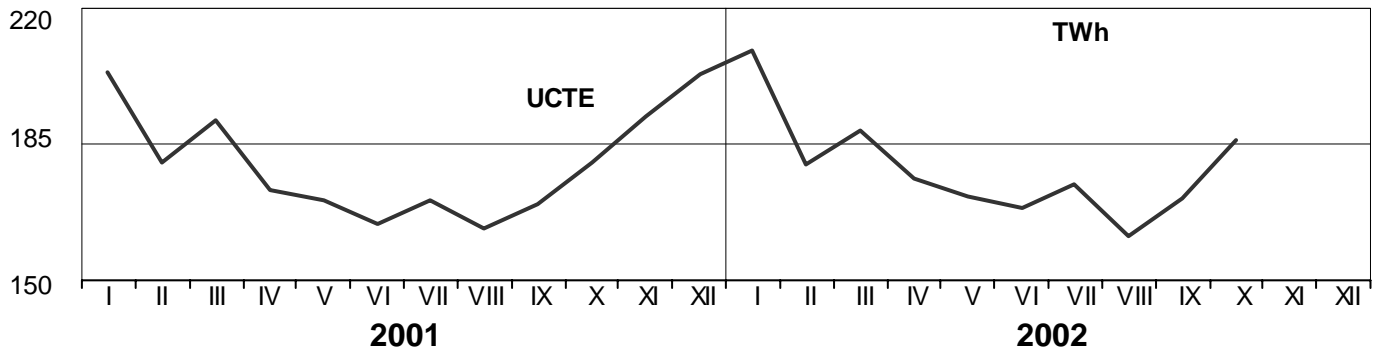
Sum of physical energy flows between UCTE countries = 21347 GWh

Total physical energy flows = 24591 GWh

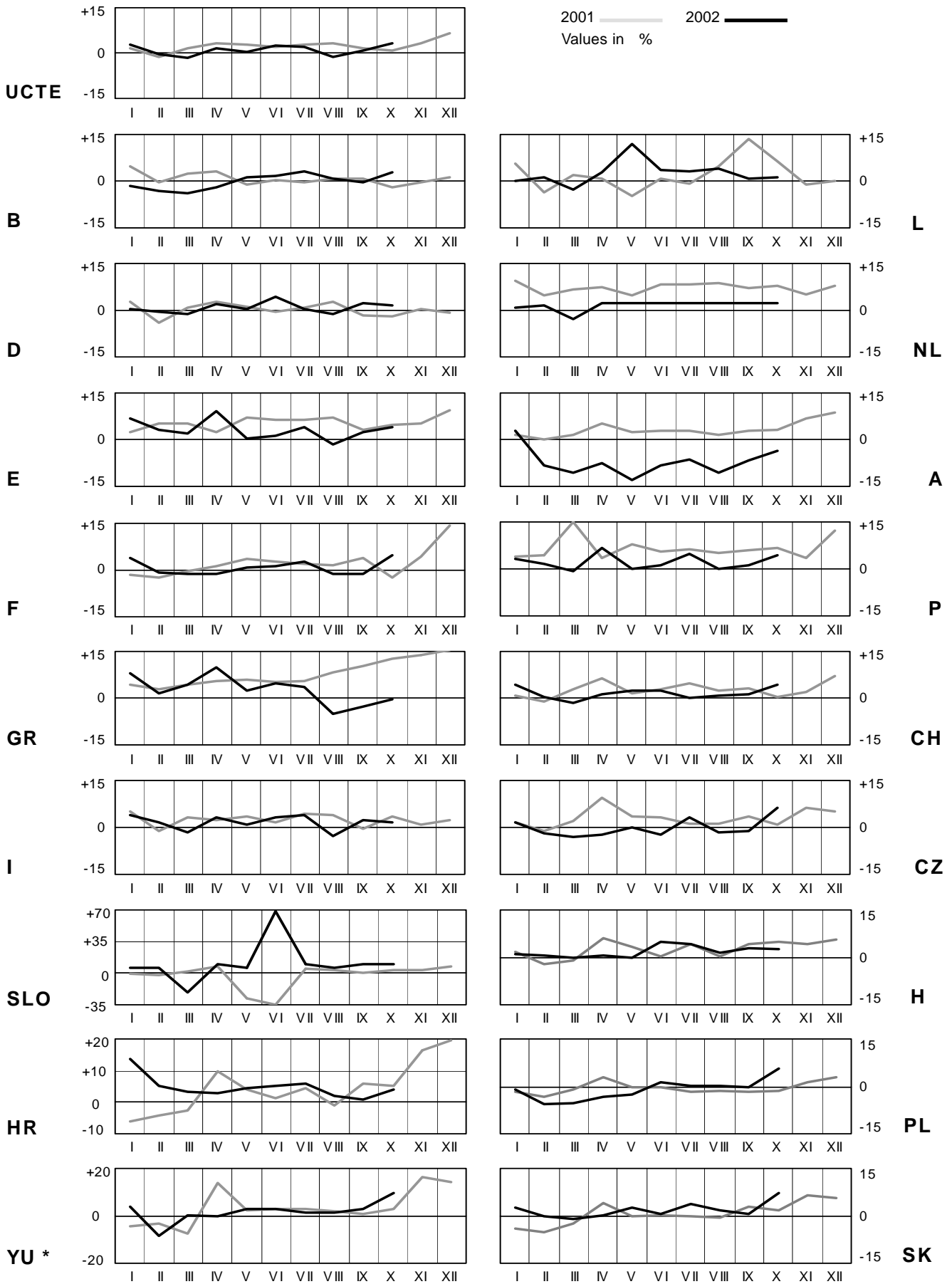
¹ III = Third countries: Albania, Belarus, Bulgaria, Denmark, Great Britain, Morocco, Rumania, Sweden and Ukraine

² Corresponds to the supply of a passive island in Poland with BY.

These physical energy flows were measured on the cross-frontier transmission lines (≥ 110 kV) listed in table 9 of the Statistical Yearbook. These values may differ from the official statistics and the exchange balances in chapter 1.



* YU = FRY + FYROM (Federal Republic of Yugoslavia and Former Yugoslav Republic of Macedonia)

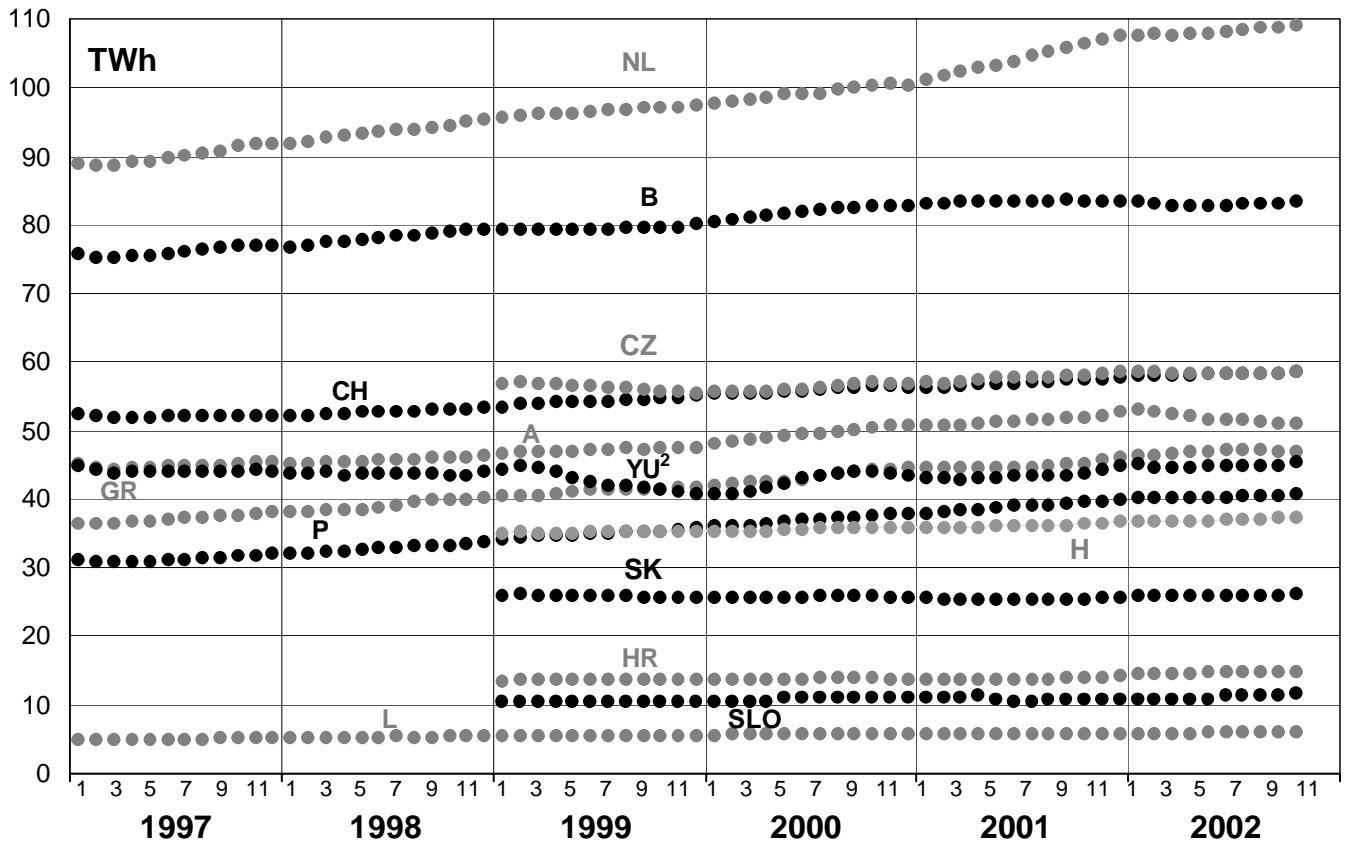
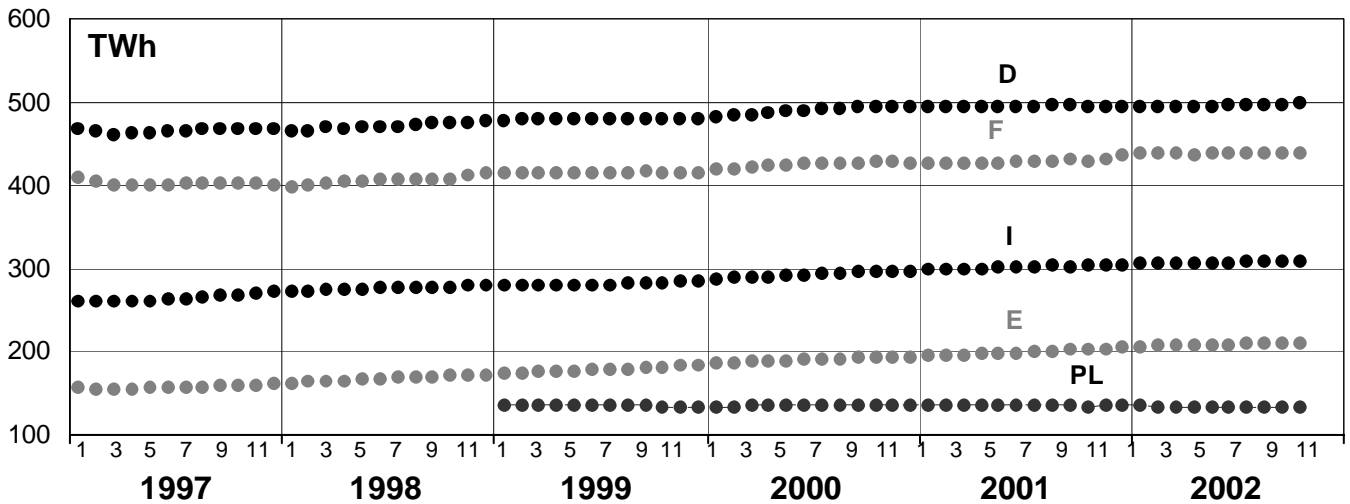
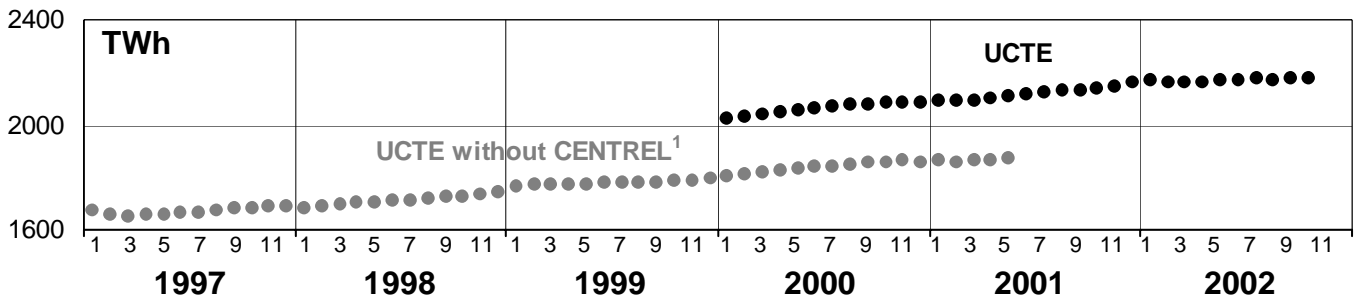


* YU = FRY + FYROM (Federal Republic of Yugoslavia and Former Yugoslav Republic of Macedonia)

5

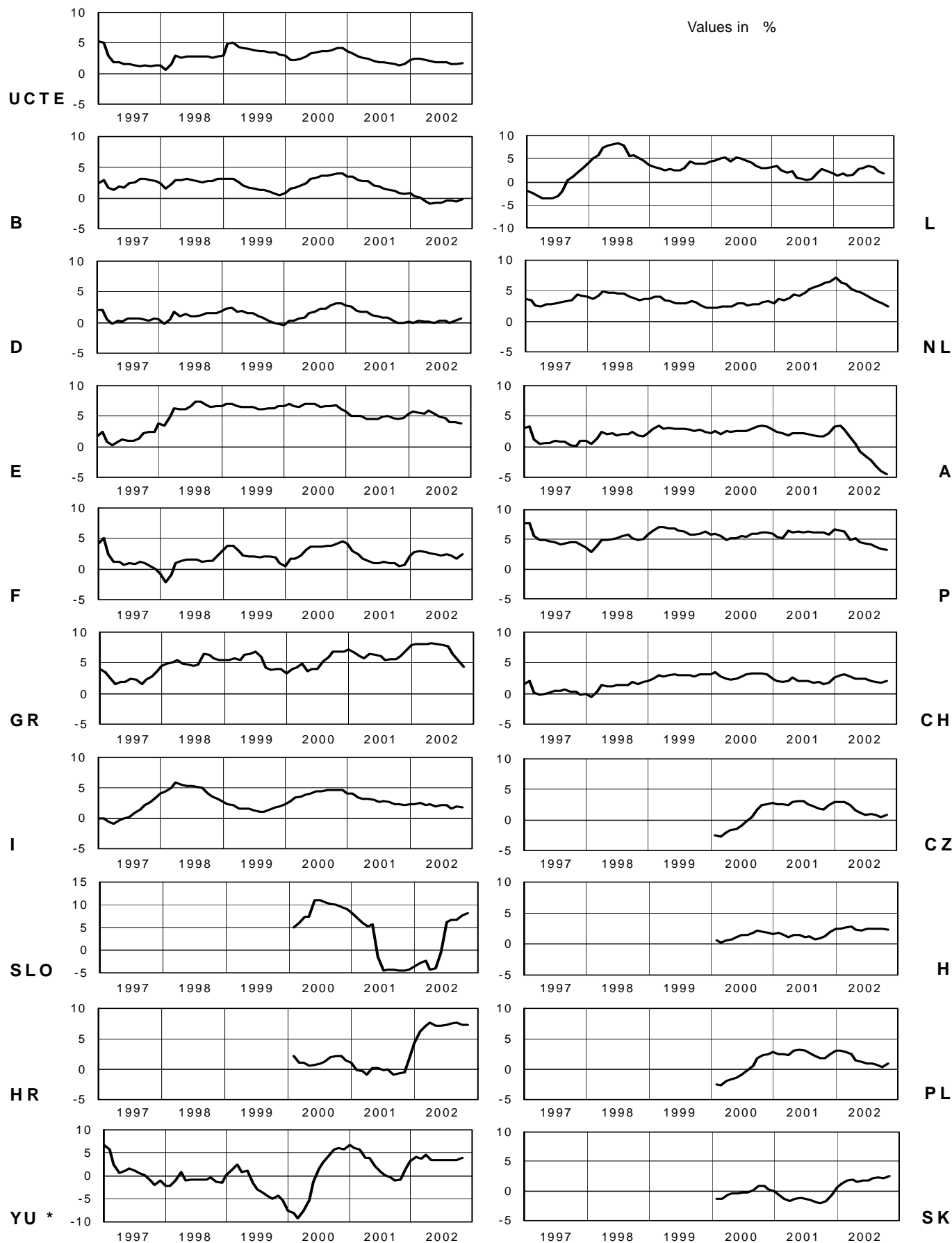
Consumption of last 12 months

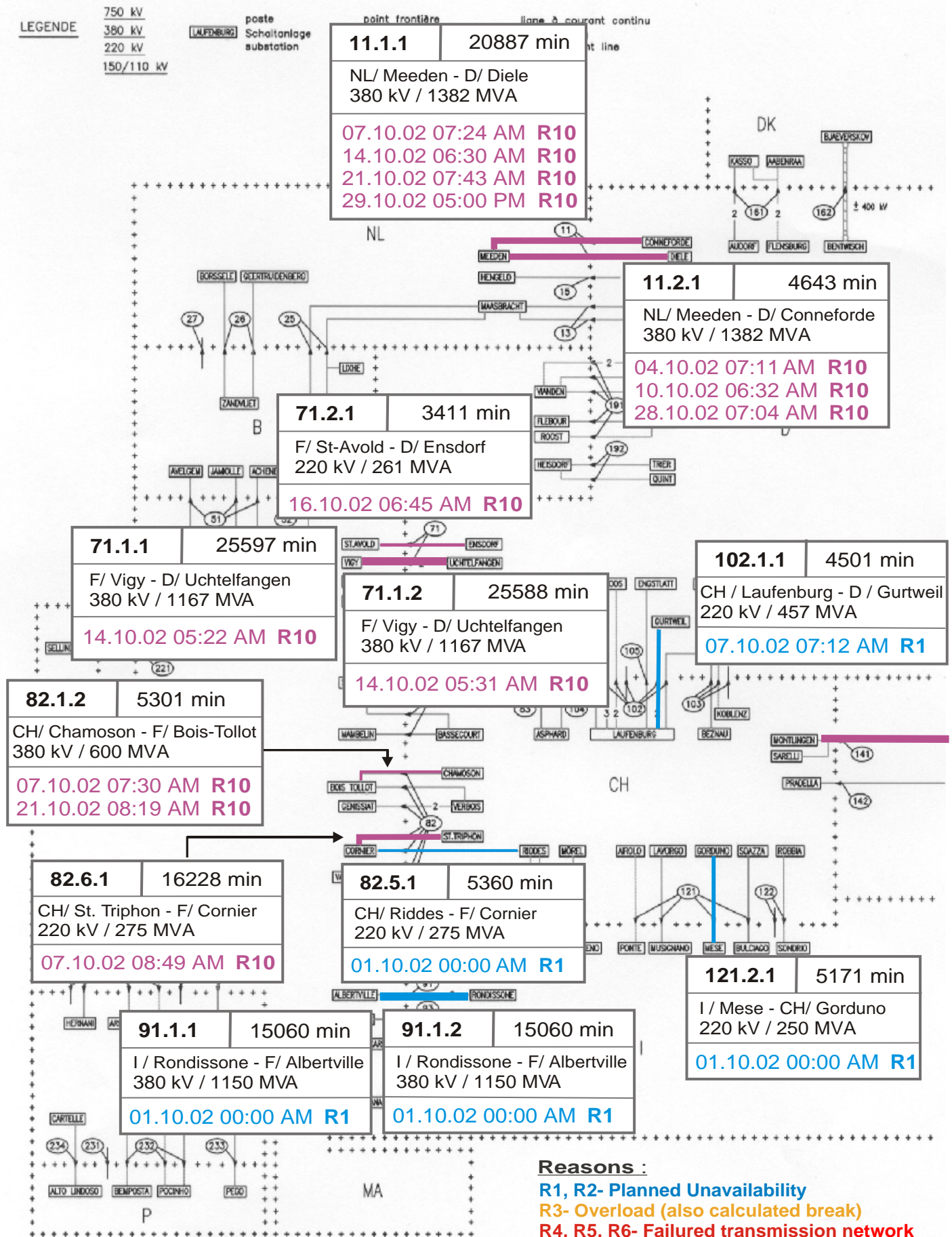
October 2002



¹ CENTREL countries CZ, H, PL, SK member of UCTE from May 2001

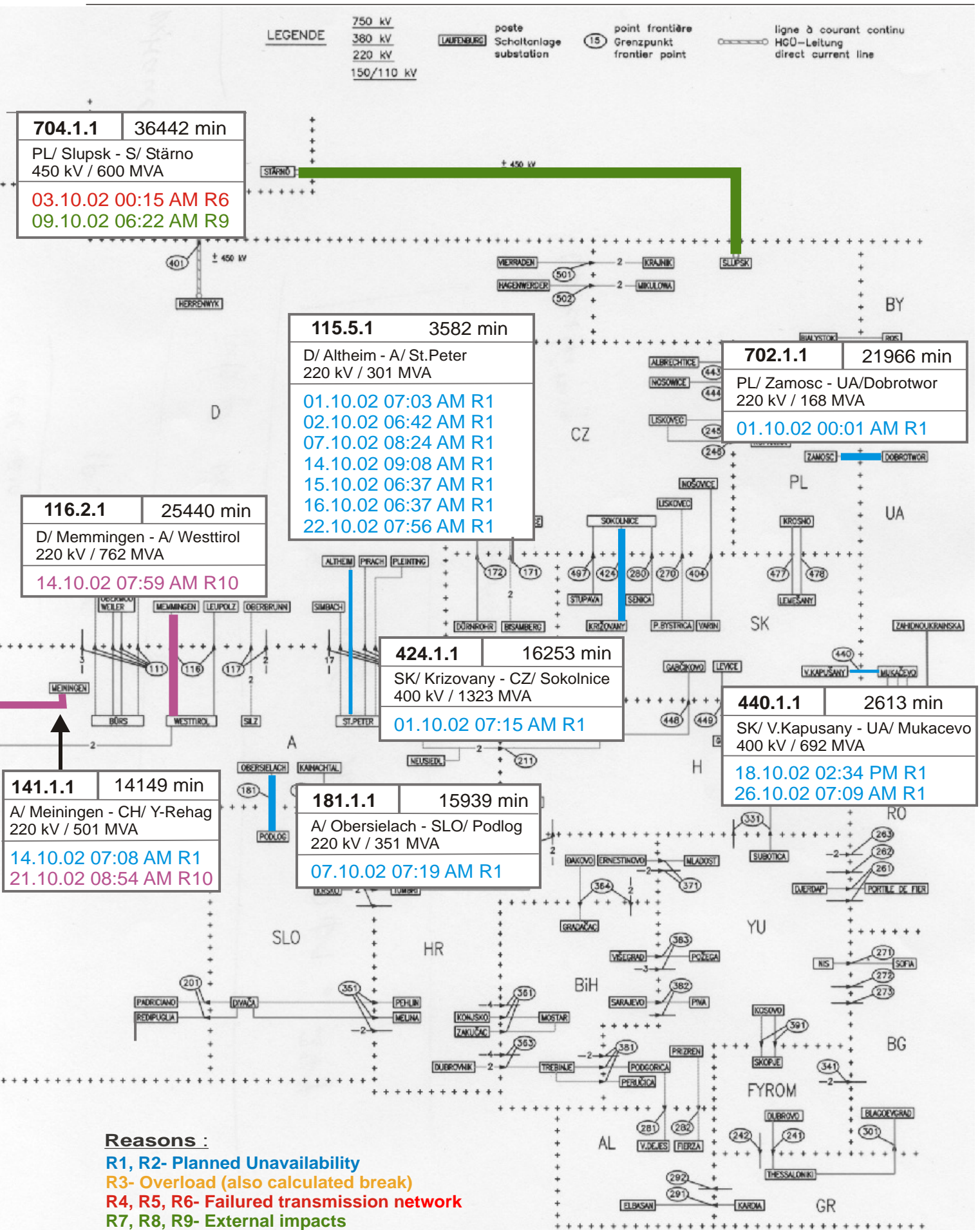
² YU = FRY + FYROM (Federal Republic of Yugoslavia and former Yugoslav Republic of Macedonia)





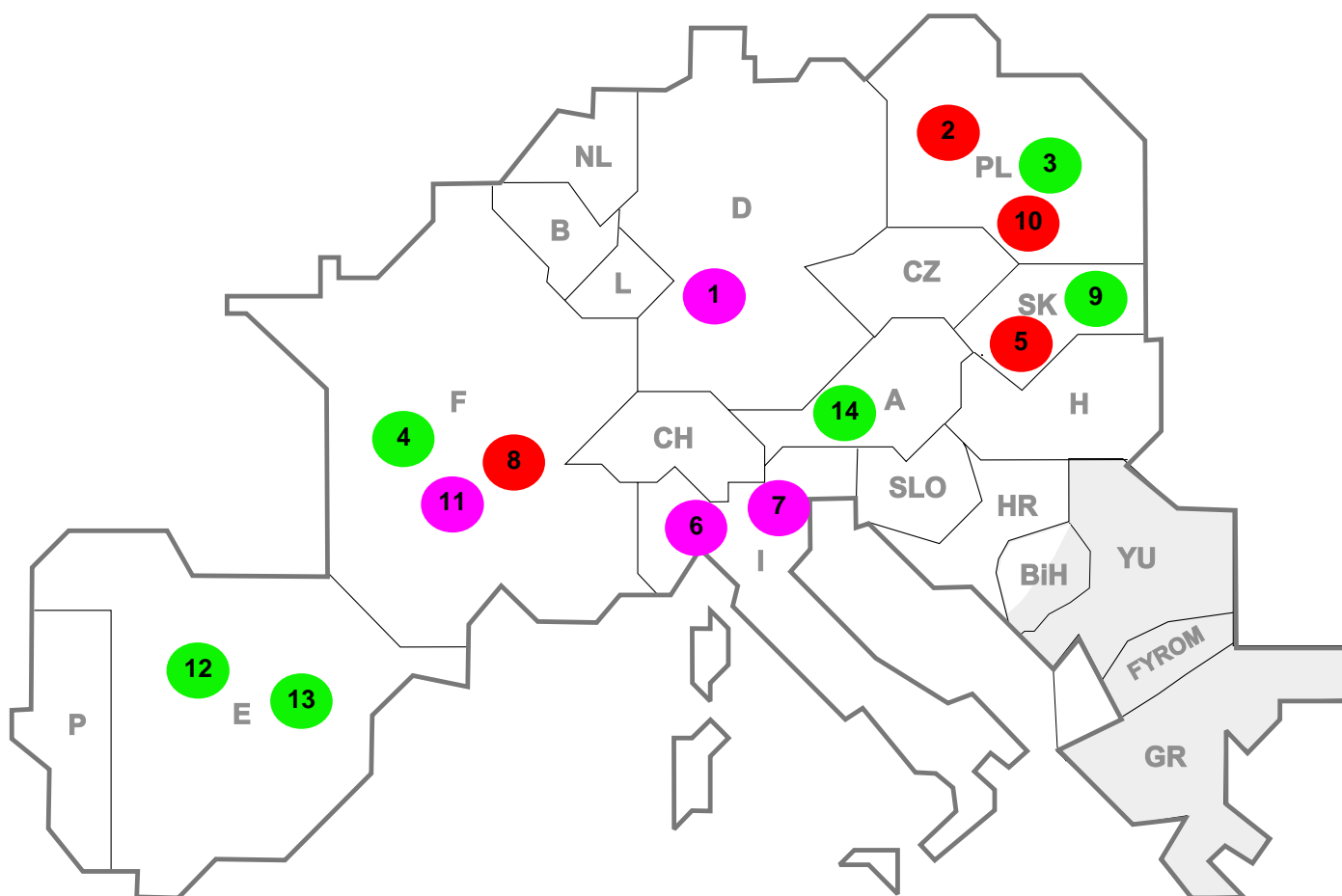
Reasons :

- R1, R2- Planned Unavailability
- R3- Overload (also calculated break)
- R4, R5, R6- Failed transmission network
- R7, R8, R9- External impacts
- R10, R11- Other reasons



Reasons :

- R1, R2- Planned Unavailability
- R3- Overload (also calculated break)
- R4, R5, R6- Failed transmission network
- R7, R8, R9- External impacts
- R10, R11- Other reasons



Reasons:

R3 **Overload**

R7, R8, R9 **External impacts (animals...)**

R4, R5, R6 **Failure in the transmission network**

R10, R11 **Other reasons**

nbr	Country	Substation	Reason	Energie not supplied [MWh]	Total loss of power [MW]	Restoration time [min]	Equivalent time of interruption ¹
1	D	Frimmersdorf	R10	1344	284	73	0,30
2	PL	Slupsk	R6	600	100	882	0,39
3	PL	Slupsk	R9	600	200	32126	0,78
4	F	Grande Synthe	R8	418	77	998	0,09
5	SK	Medzibrod	R5	58	116	2	2,33
6	I	Corriolo	R10	48	160	71	0,27
7	I	Partinico	R10	12	117	6	0,20
8	F	Faidherbe	R4	7	73	8	0,09
9	SK	Levice	R7	5	69	4	1,39
10	P	Sobral	R5	3	0	1	0,00
11	F	Mazingarbe	R11	1	22	136	0,03
12	E	P.Bibey	R8	0	26	2	0,06
13	E	S. Boi	R8	0	40	2	0,10
14	A	Hessenberg	R7	0	0	44	0,00

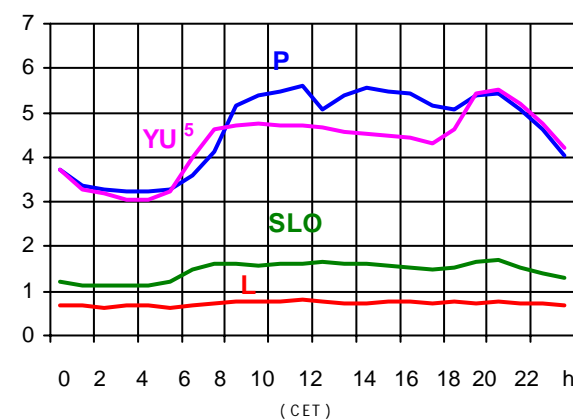
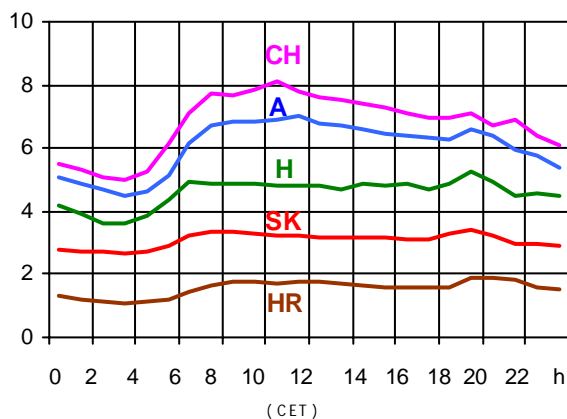
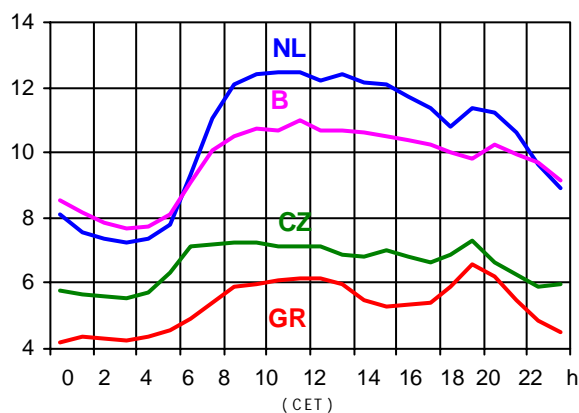
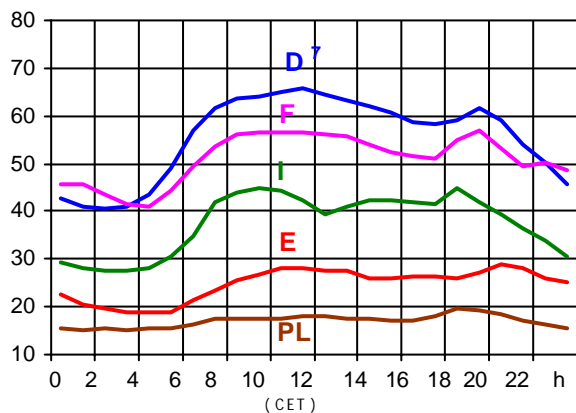
¹ (year [in min] * power loss) / consumption last 12 months

Control area	Prog_exp	Prog_imp	Prog_exp3	Prog_imp3	Prog_exp11	Prog_imp11
B	80875	795454	0	658	0	657
D	2955674	2456384	3179	2919	3142	5093
E	493122	785516	657	900	394	1100
F	7513400	1455837	8689	845	9918	1248
GR	199909	408590	295	457	246	600
I	27850	4863595	47	6635	0	6483
SLO	n.a.	n.a.	n.a.	n.a.	n.a.	n.a.
HR	93765	276657	27	360	189	475
YU	165667	662414	276	615	246	804
NL	612622	1888448	1093	2115	364	2472
A	782618	620085	914	551	1822	1007
P	44520	346845	0	721	0	268
CH	2315691	2499329	2966	4213	3123	2464
CZ	1640284	689889	2545	815	2154	1179
H	593770	933345	905	1210	890	1490
PL	878772	76897	810	0	1818	118
SK	669247	164347	842	50	1007	250

- Control areas can differ from national borders (i.e. German block which includes parts of A, L and DK).
- Values are calculated on an hourly base (MWh).
- This values are not the provisional values entered in the VULCANUS system, but the definitive values after an eventual correction during the actual date.
- Prog_exp: Sum of all positive values of every hour of every border
- Prog_imp: Sum of all negative values of every hour of every border
- Prog_exp3: Sum of all positive values the third Wednesday from 02:00 to 03:00 a.m.
- Prog_imp3: Sum of all negative values the third Wednesday from 02:00 to 03:00 a.m.
- Prog_exp11: Sum of all positive values the third Wednesday from 10:00 to 11:00 a.m.
- Prog_imp11: Sum of all negative values the third Wednesday from 10:00 to 11:00 a.m.
- YU = FRY + FYROM (Federal Republic of Yugoslavia and Former Yugoslav Republic of Macedonia)

Consumption hourly load curves¹ on 18.09.02

Values in GW



Peak load on 3rd Wednesday¹

18.09.02	B	D	E	F	GR	I	SLO	HR	YU ⁵	L	NL	A	P	CH	CZ	H	PL	SK	UCTE
MW	11071	65700	29067	53802	6610	46141	1684	1913	5531	810	12478	7553	5594	8289	7320	5248	18329	3411	284387
Δ % ²	-2,4	1,1	1,8	-6,7	-1,9	4,6	6,9	-3,1	-0,1	-6,1	-1,1	5,9	-0,1	-0,5	-1,8	-0,6	-1,9	-2,9	-0,4

Power produced in parallel operation³

18.09.02	B	D	E	F	GR	I	SLO	HR	YU ⁵	L	NL	A	P	CH	CZ	H	PL	SK	Others ⁴	UCTE
MW	9295	69900	27790	62520	5617	39516	1821	1731	3882	778	10147	6735	5141	11679	9430	4112	18607	3426	2355	292127

¹ Percentage as referred to total values in %

B	D	E	F	GR ⁶	I	SLO	HR	YU ⁵	L	NL	A	P	CH	CZ	H	PL	SK
100	91	94	97	91	100	95	100	96	99	90	82	87	100	100	100	100	100

² Variation as compared to corresponding month of the previous year

³ Including autoproduction

⁴ Denmark (Jutland)

⁵ YU = FRY + FYROM (Federal Republic of Yugoslavia and Former Yugoslav Republic of Macedonia)

⁶ The representativity of data referring to the whole country including the isolated systems of the Greek island is 91%

The representativity of data referring to the mainland interconnected system is 98%

⁷ Values estimated on the basis of former data from the German Federal Office for Statistics

Existing lines with towers for lines with 2 circuits mounted

	B	D	E	F	GR	I	SLO	HR	JEL	L	NL	A	P	CH	CZ	H	PL	SK	CY22	
2011	8940	52	3880	-67511	228	4845	1757	-258	-548	1231	325	1728	140	18	-694	828	312	-784	-381	-373
2008	420	158	4787	-4283	18	4428	134	807	-105	1115	3677	1819	-175	82	-522	-10316	438	-811	-371	-858

	F	I	SLO	HR	JIEL	L	NL	A	P	CH	CZ	H	PL	SK
B	2/2					2/-	-/4							
D	2/4					8/-	-/8	9/3		5/7	-/4			
E	2/2								3/2					
	F	3/3								5/5				
	GR	-/1			-/1									
		I	1/1					1/-		6/2				
			SLO	2/3				1/2						
				HR	7/3									
									JIEL					
									A	1/2	2/1	2/1		
													CZ	2/2
													H	-/2
													PL	-/2



Contact

Boulevard Saint-Michel, 15
 B-1040 Brussels – Belgium
 Tel +32 2 741 69 40 – Fax +32 2 741 69 49

info@ucte.org
 www.ucte.org