



## August 2002

Monthly provisional values  
union for the co-ordination of transmission of electricity

---

---

<b>Table of contents</b>		<b>Page</b>
1	Electricity supply situation of the countries	2
2	Physical energy flows	3
3	Monthly consumption	4
4	Monthly consumption variation	5
5	Consumption of last 12 months	6
6	Variation of the last 12 months' consumption	7
7	Load flows (night)	8
8	Load flows (day)	9
9	Unavailability of international tie lines ( major events )	10
10	Network reliability ( major events )	12
11	Scheduled exchanges	13
12	Load on the 3 <sup>rd</sup> Wednesday	14

# 1

## Electricity supply situation of the countries

August 2002

Countries	B	D	E	F	GR	I	SLO	HR	YU <sup>4</sup>	L	NL	A	P	CH	CZ	H	PL	SK	UCTE
<b>Net production in GWh<sup>1</sup></b>																			
Hy	116	2095	1484	4359	223	3805	330	345	839	89	0	3058	252	3886	288	20	252	457	21898
Tn	3935	11206	5342	30358	-	-	494	0	0	0	320	0	0	1439	1541	1073	0	1238	56946
Tc	2146	23433	9996	1683	3695	16138	171	510	2043	161	7201	421	2578	213	3596	1346	10099	483	85913
Total	6197 <sup>2</sup>	36734 <sup>2</sup>	16822 <sup>2</sup>	36400	3918 <sup>2</sup>	19943	995	855 <sup>2</sup>	2882	250	7521 <sup>2</sup>	3479	2830 <sup>2</sup>	5538 <sup>2</sup>	5425 <sup>2</sup>	2439 <sup>2</sup>	10351 <sup>2</sup>	2178	164757 <sup>2</sup>
<b>Exchange balance in GWh</b>																			
Imp. = +	330	1446	236	-5656	214	2946	-73	300	199	294	1512	263	339	-915	-1285	446	-301	-245	50
Exp. = -																			
<b>Consumption of pumps in GWh</b>																			
	135	456	572	518	54	817	0	10	91	118	0	103	66	274	63	0	155	26	3458
<b>Consumption in GWh<sup>1</sup></b>																			
monthly																			
	6392	37724	16486	30226	4078	22072	922	1145	2990	426	9033	3639	3103	4349	4077	2885	9895	1907	161349
Δ <sup>3</sup> [%]	0,8	-1,4	-1,6	-1,3	-5,3	-2,9	6,1	2,1	1,4	3,9	2,5	-10,6	-0,2	0,6	-1,6	1,3	0,0	1,6	-1,3
last 12 months																			
	83191	496535	209791	438591	47128	308117	11375	14911	44992	6047	109464	51281	40561	58361	58339	37141	133313	26009	2175147
Δ <sup>3</sup> [%]	-0,4	0,0	4,0	2,2	6,4	1,6	6,8	7,8	3,3	3,2	3,9	-3,1	3,7	1,9	0,7	2,6	-1,3	2,3	1,6
<b>Energy capability factor</b>																			
	-	1,22	-	-	0,84	0,96	1,09	1,68	1,20	-	-	-	0,36	0,93	-	-	-	1,57	1,0

<sup>1</sup> Percentage as referred to total values in %

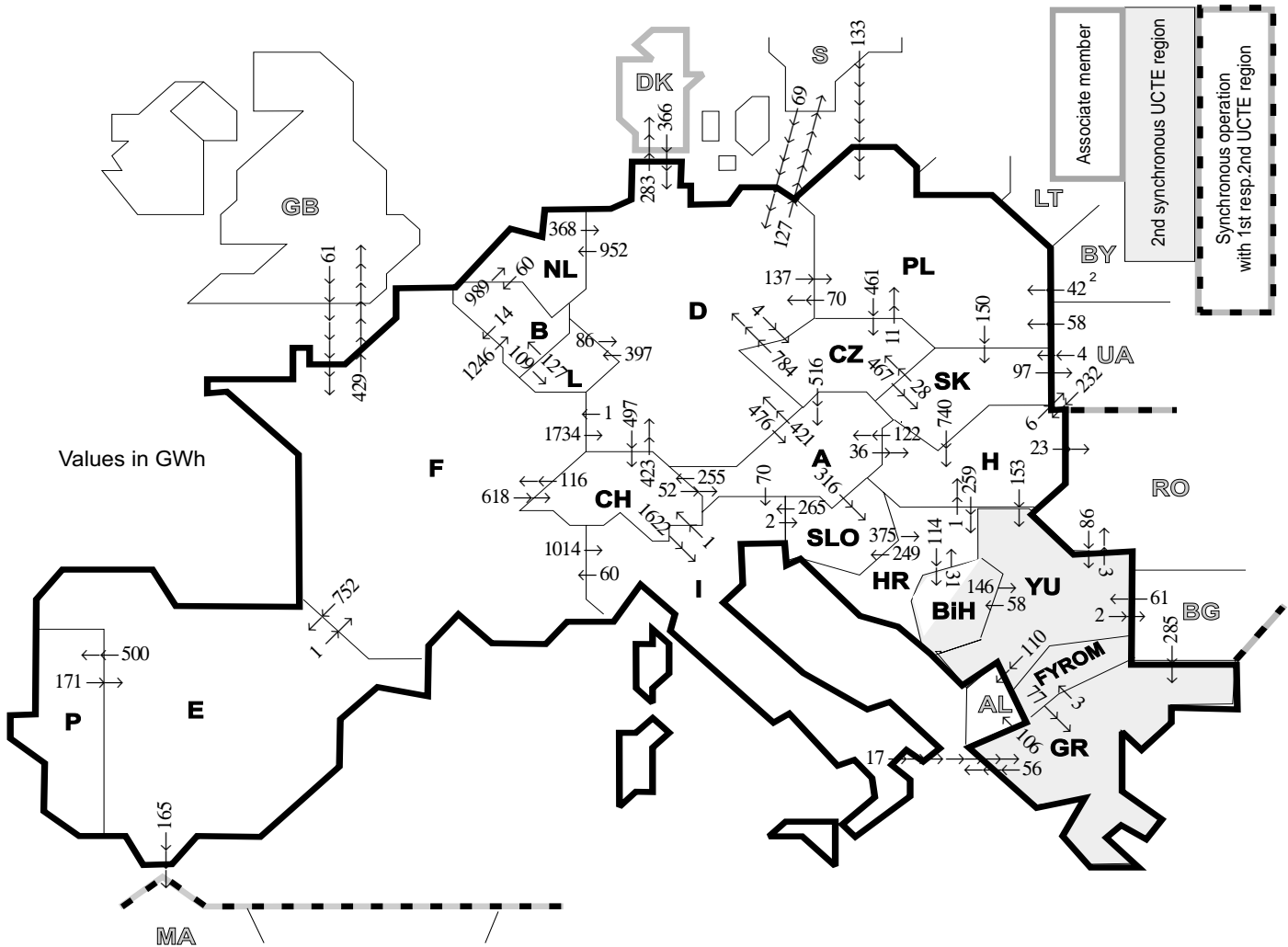
Countries	B	D	E	F	GR <sup>6</sup>	I	SLO	HR	YU <sup>4</sup>	L	NL	A	P	CH	CZ	H	PL	SK
Production	100	93	94	97	91	100	95	100	96	98	100	84	91	100	100	100	100	100
Consumption	100	93	94	97	91	100	95	100	96	99	100	90	91	100	100	100	100	100

<sup>2</sup> Including deliveries from industry

<sup>3</sup> Variation as compared to corresponding period of the previous year and representativity 100%

<sup>4</sup> YU = FRY + FYROM (Federal Republic of Yugoslavia and Former Yugoslav Republic of Macedonia)

<sup>5</sup> The representativity of data referring to the whole country including the isolated systems of the Greek island is 91%. The representativity of data referring to the mainland interconnected system is 98%.



Exporting countries	Importing countries																				Σ Export	
	B	D	E	F	GR	I	SLO	HR	BiH	YU	L	NL	A	P	CH	CZ	H	PL	SK	III <sup>1</sup>		
B	-	-	-	14	-	-	-	-	-	-	109	989	-	-	-	-	-	-	-	-	1112	
D	-	-	-	1	-	-	-	-	-	-	397	952	476	-	497	4	-	137	-	410	2874	
E	-	-	-	1	-	-	-	-	-	-	-	-	-	500	-	-	-	-	-	165	666	
F	1246	1734	752	-	1014	-	-	-	-	-	-	-	-	-	618	-	-	-	-	-	429	5793
GR	-	-	-	-	56	-	-	-	-	3	-	-	-	-	-	-	-	-	-	-	106	165
I	-	-	-	60	17	-	2	-	-	-	-	-	0	-	1	-	-	-	-	-	80	
SLO	-	-	-	-	265	-	375	-	-	-	-	-	0	-	-	-	-	-	-	-	640	
HR	-	-	-	-	-	249	-	114	0	-	-	-	-	-	-	-	1	-	-	-	364	
BiH	-	-	-	-	-	-	31	-	146	-	-	-	-	-	-	-	-	-	-	-	177	
YU	-	-	-	-	77	-	0	58	-	-	-	-	-	-	-	-	0	-	-	115	250	
L	127	86	-	-	-	-	-	-	-	-	-	-	-	-	-	-	-	-	-	-	213	
NL	60	368	-	-	-	-	-	-	-	-	-	-	-	-	-	-	-	-	-	-	428	
A	-	421	-	-	-	70	316	-	-	-	-	-	-	-	255	0	36	-	-	-	1098	
P	-	-	171	-	-	-	-	-	-	-	-	-	-	-	-	-	-	-	-	-	171	
CH	-	423	-	116	-	1622	-	-	-	-	-	52	-	-	-	-	-	-	-	-	2213	
CZ	-	784	-	-	-	-	-	-	-	-	-	516	-	-	-	-	-	11	467	-	1778	
H	-	-	-	-	-	-	259	-	153	-	-	122	-	-	-	-	-	-	0	29	563	
PL	-	70	-	-	-	-	-	-	-	-	-	-	-	-	-	461	-	150	0	-	681	
SK	-	-	-	-	-	-	-	-	-	-	-	-	-	-	28	740	0	-	97	-	865	
III <sup>1</sup>	-	435	0	61	285	-	-	-	147	-	-	-	-	-	-	-	232	233	4	-	1397	
<b>Σ Import</b>	<b>1433</b>	<b>4321</b>	<b>923</b>	<b>253</b>	<b>379</b>	<b>3027</b>	<b>567</b>	<b>665</b>	<b>172</b>	<b>449</b>	<b>506</b>	<b>1941</b>	<b>1166</b>	<b>500</b>	<b>1371</b>	<b>493</b>	<b>1009</b>	<b>381</b>	<b>621</b>	<b>1351</b>	<b>21528</b>	

Sum of physical energy flows between UCTE countries = 18780 GWh

Total physical energy flows = 21528 GWh

<sup>1</sup> III = Third countries: Albania, Belarus, Bulgaria, Denmark, Great Britain, Morocco, Rumania, Sweden and Ukraine

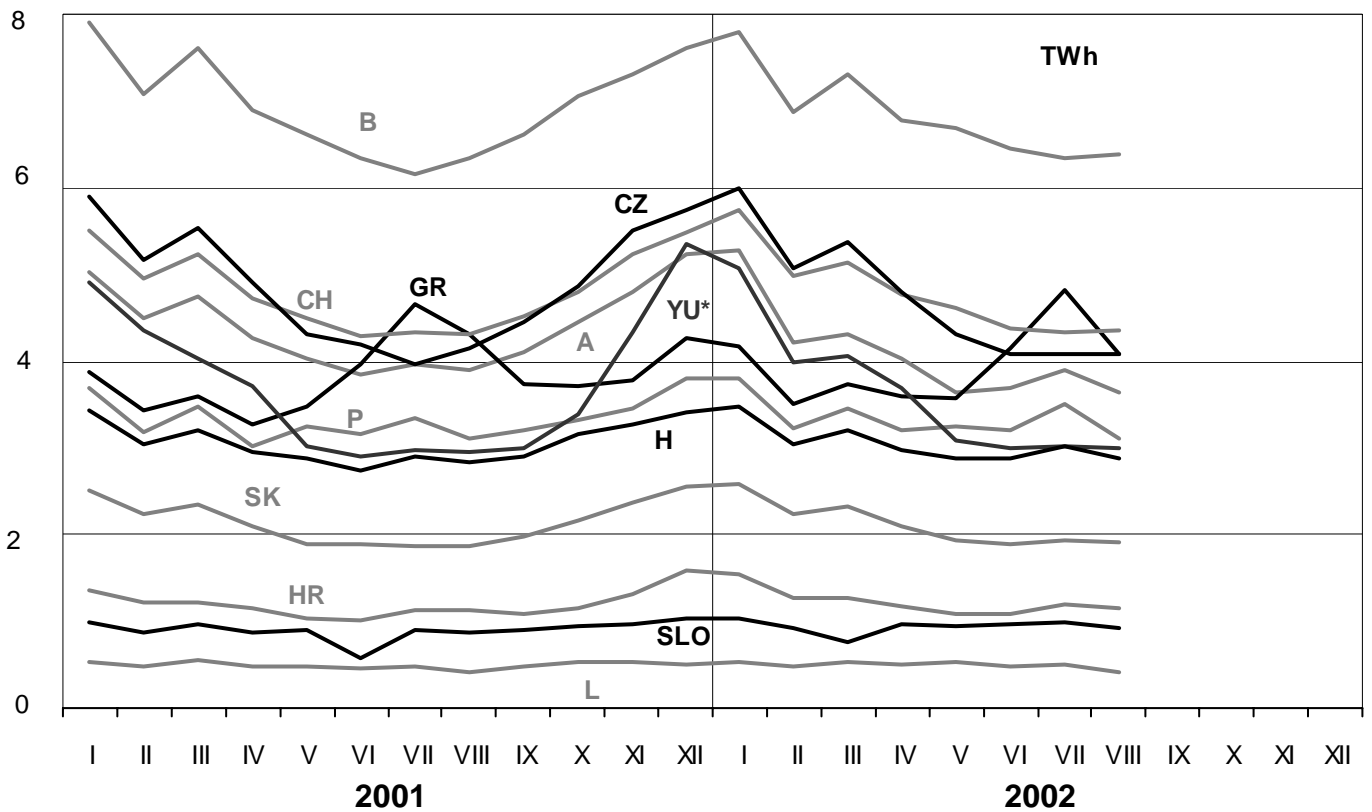
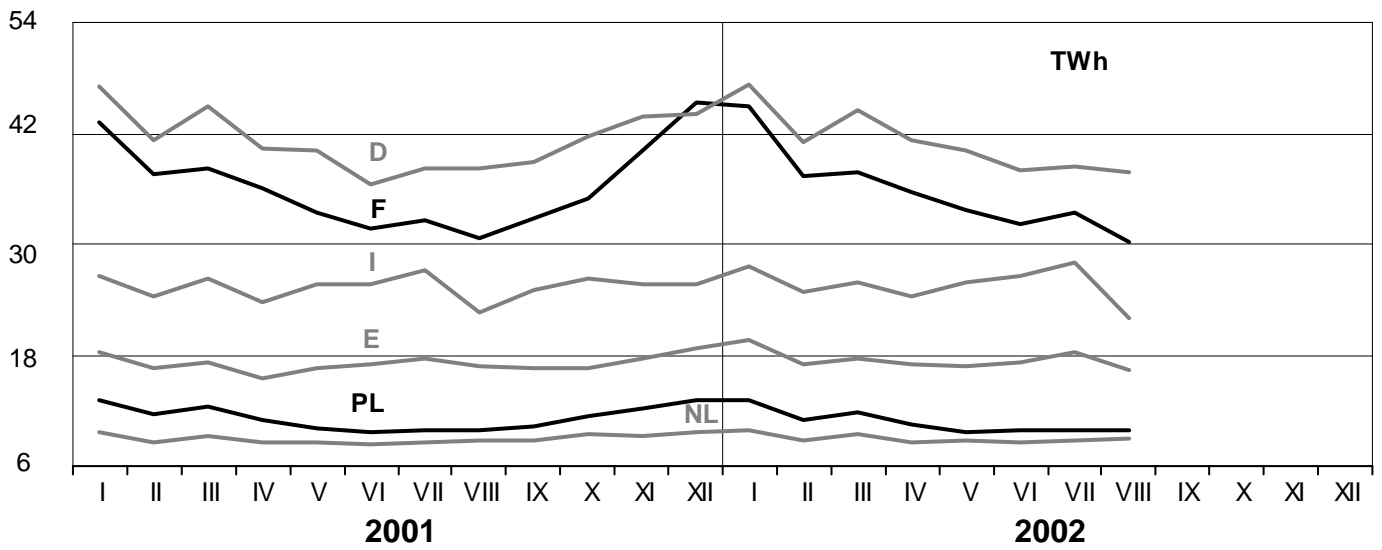
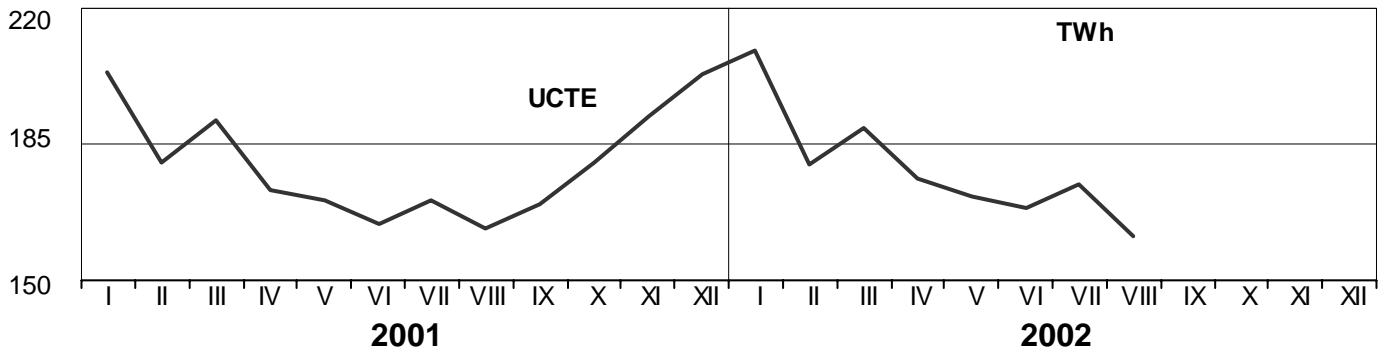
<sup>2</sup> Corresponds to the supply of a passive island in Poland with BY.

These physical energy flows were measured on the cross-frontier transmission lines (≥ 110 kV) listed in table 9 of the Statistical Yearbook. These values may differ from the official statistics and the exchange balances in chapter 1.

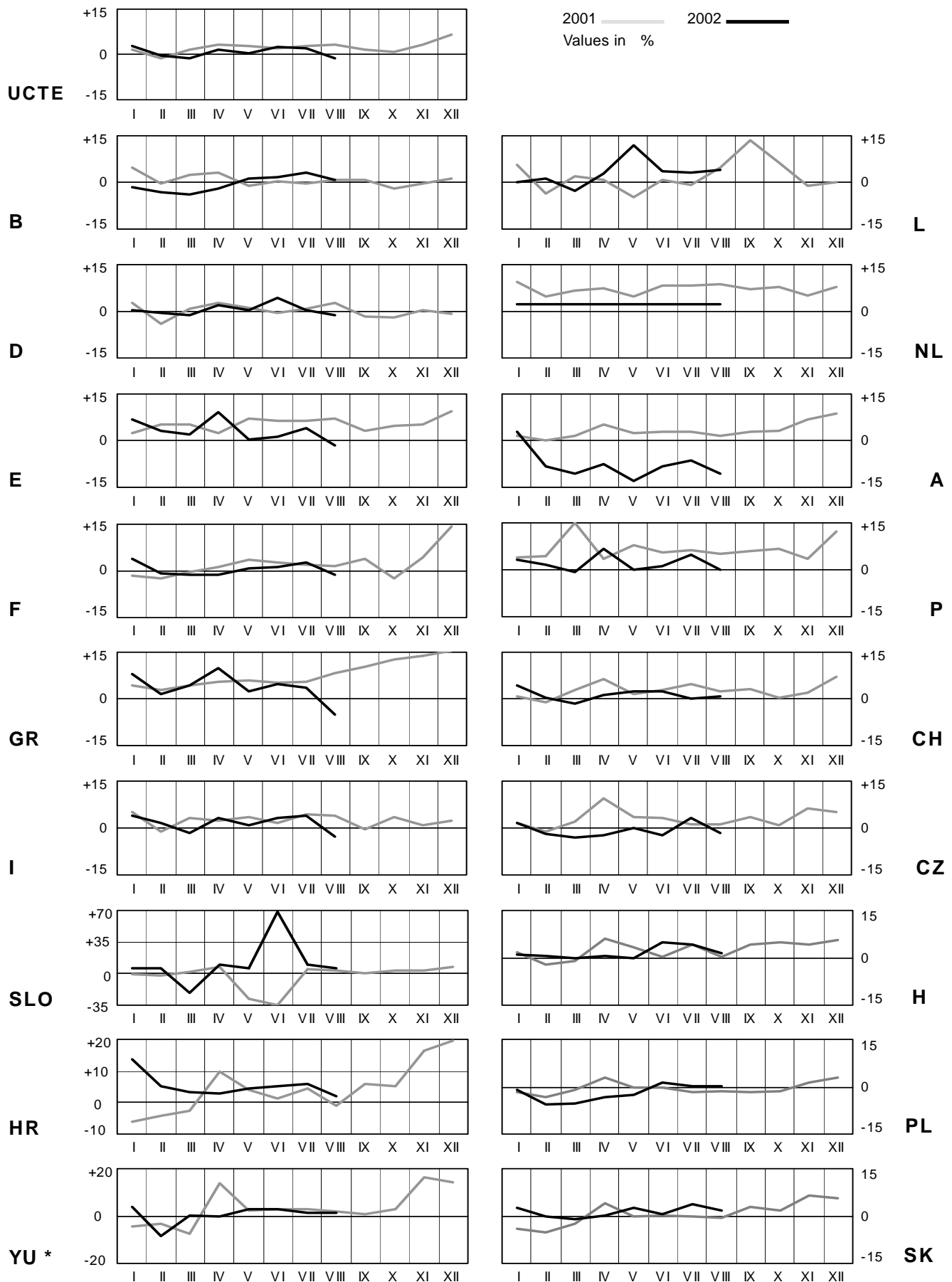
# 3

## Monthly consumption

August 2002



\* YU = FRY + FYROM (Federal Republic of Yugoslavia and Former Yugoslav Republic of Macedonia)

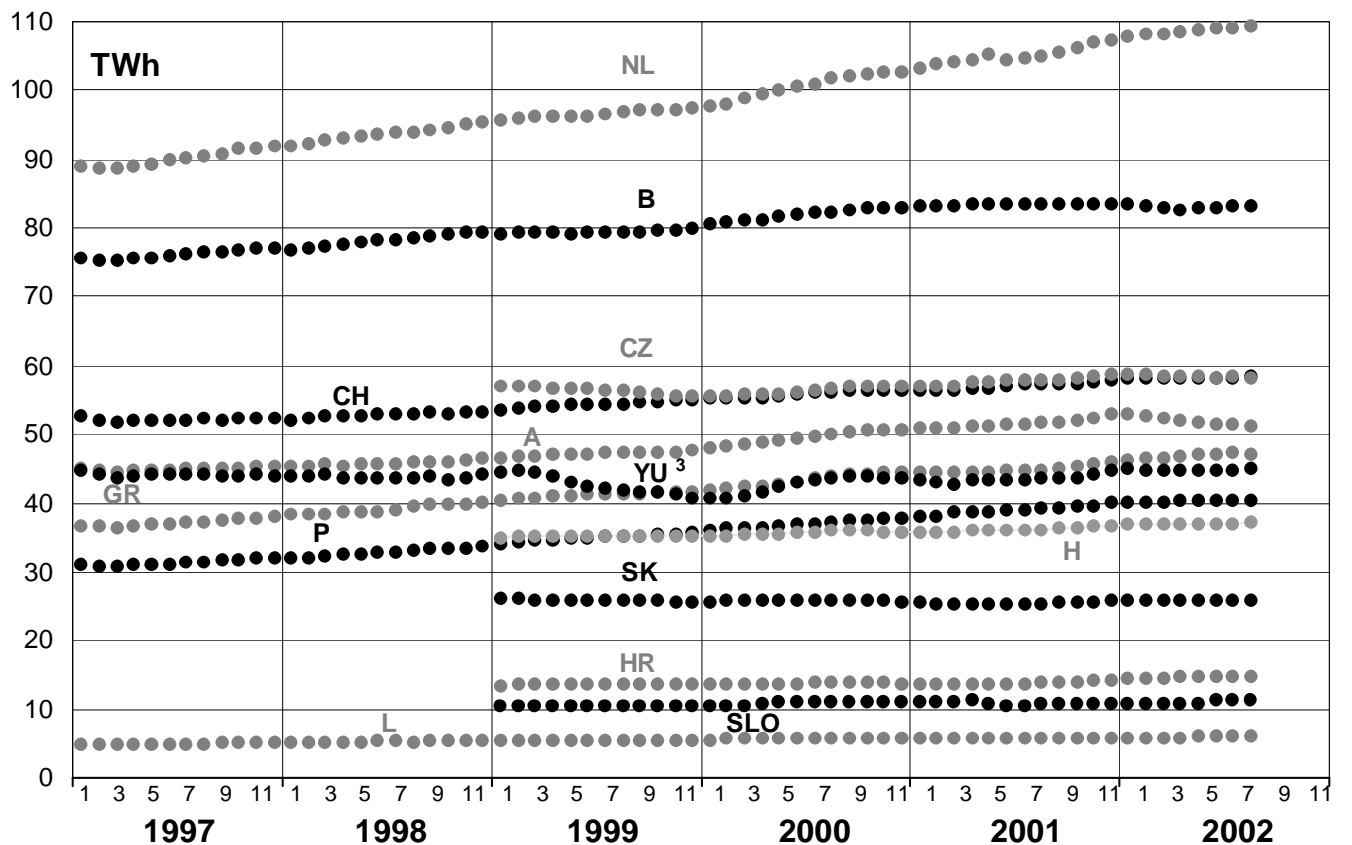
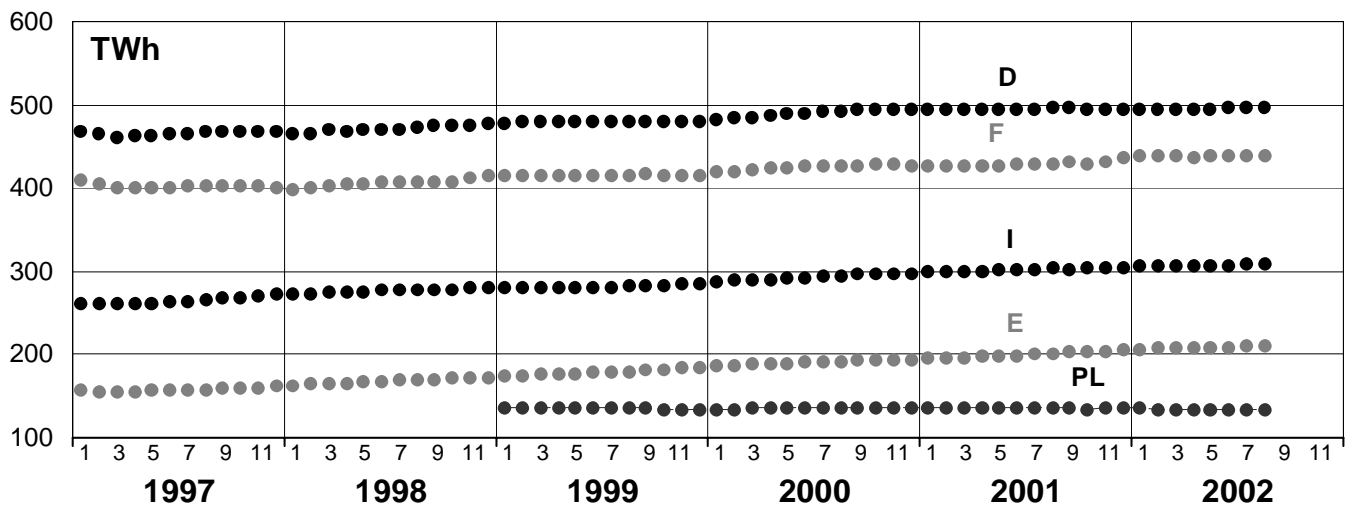
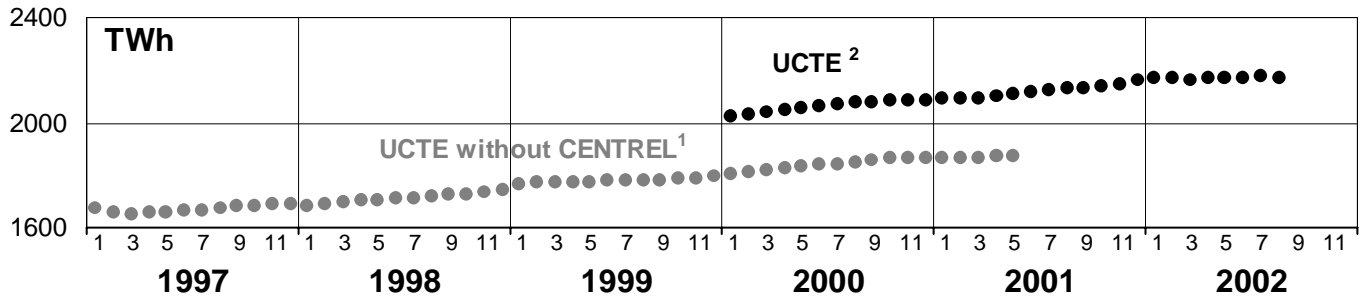


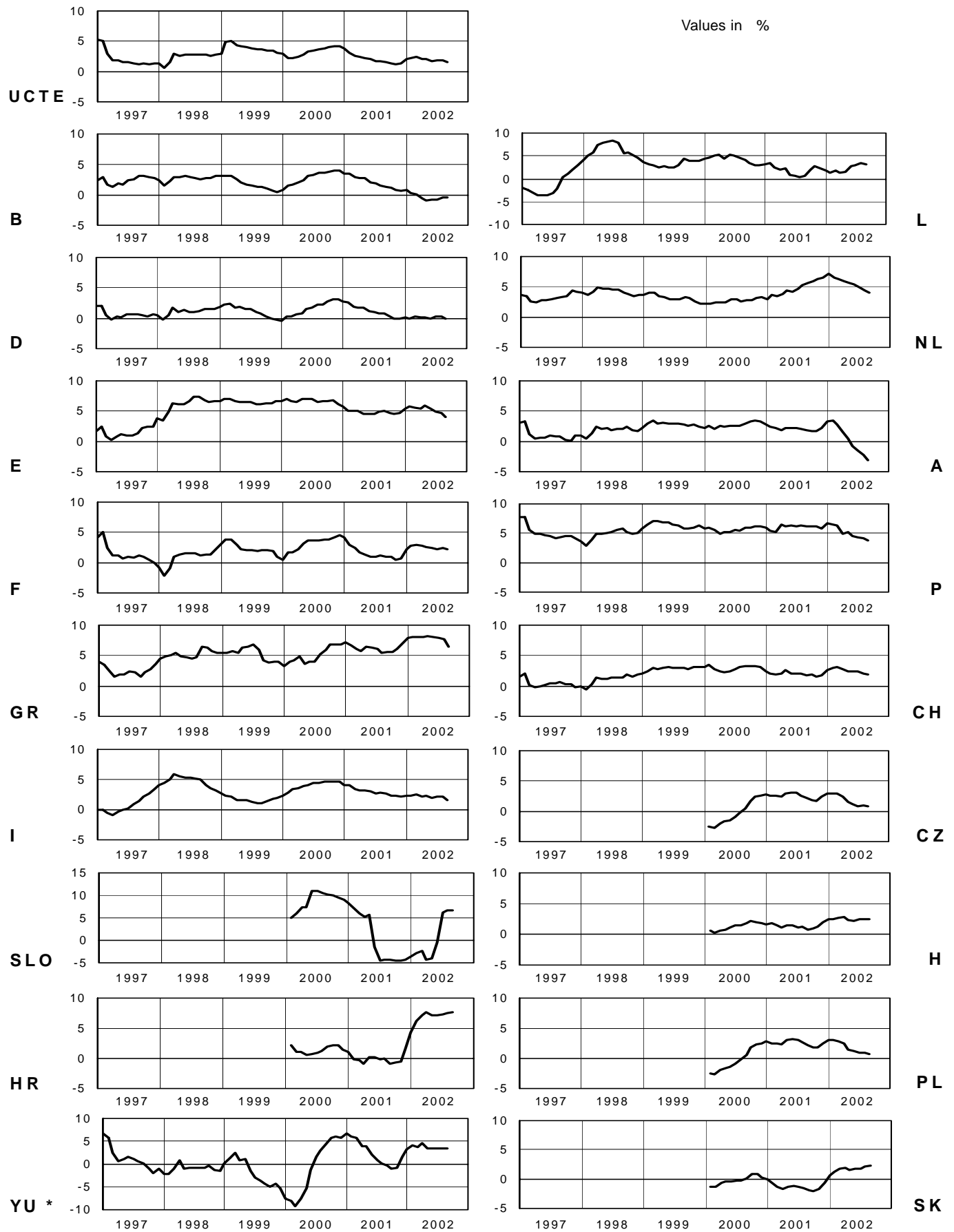
\* YU = FRY + FYROM (Federal Republic of Yugoslavia and Former Yugoslav Republic of Macedonia)

# 5

## Consumption of last 12 months

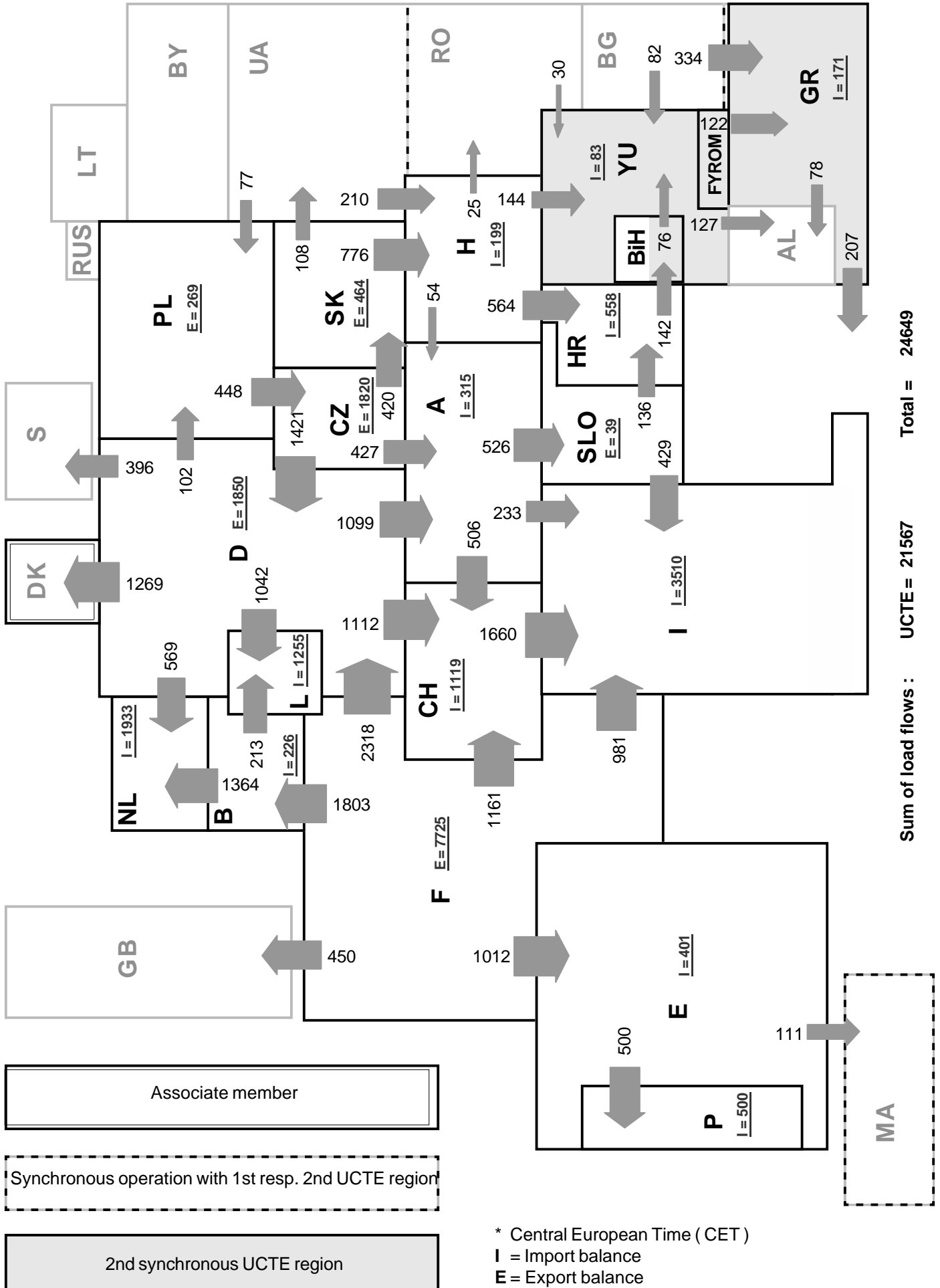
August 2002

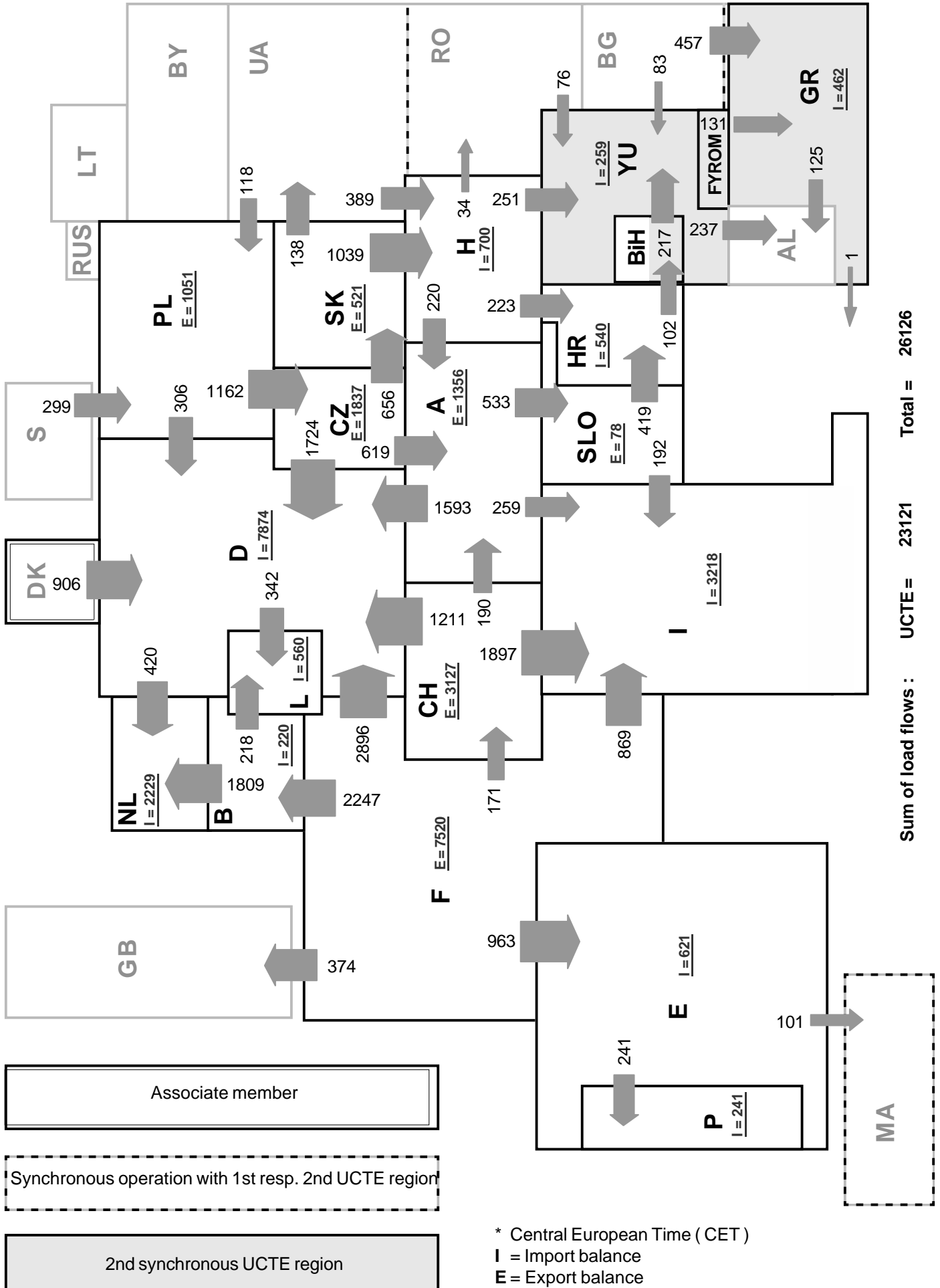


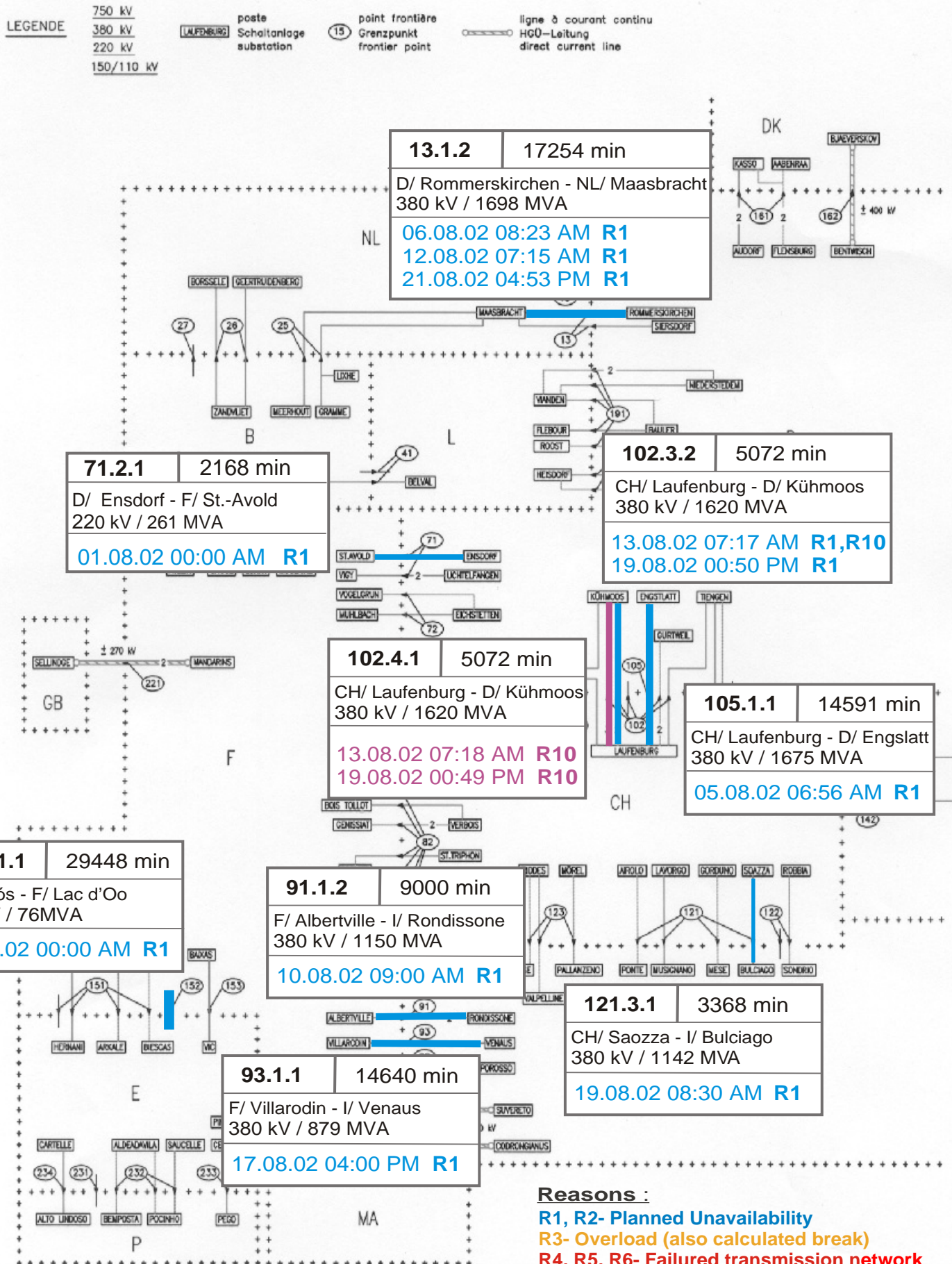


\* YU = FRY + FYROM (Federal Republic of Yugoslavia and Former Yugoslav Republic of Macedonia)



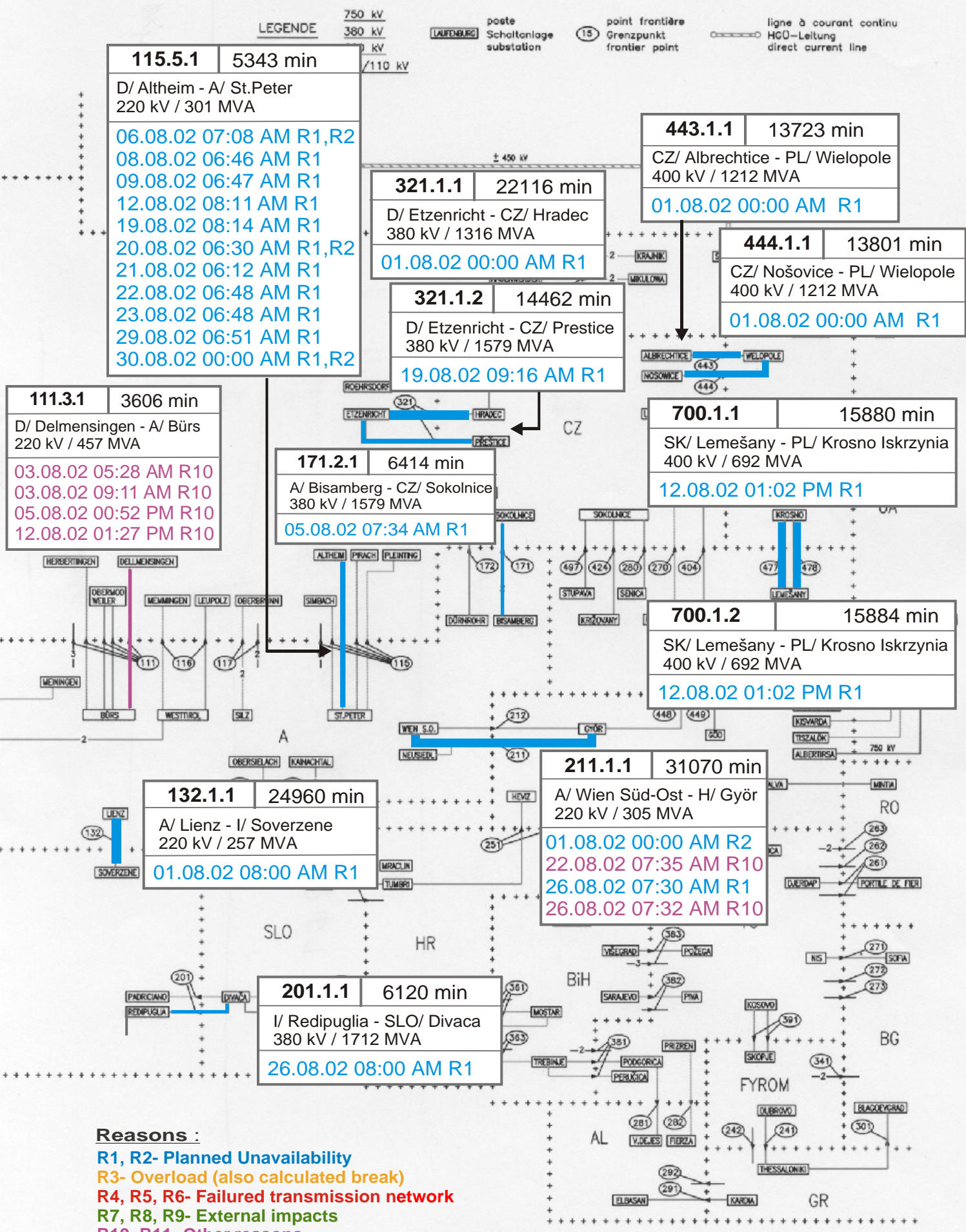


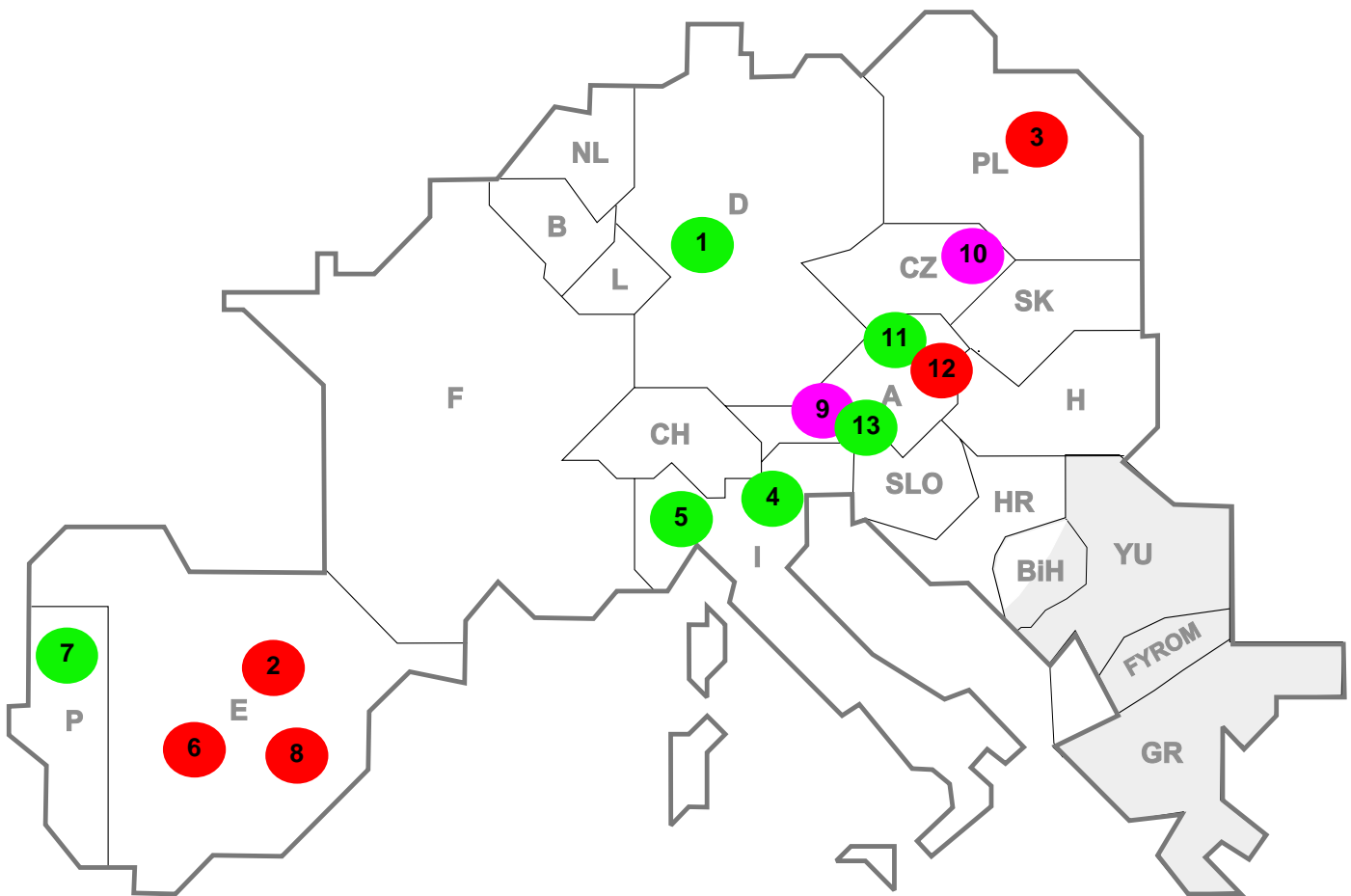




**Reasons :**

- R1, R2- Planned Unavailability
- R3- Overload (also calculated break)
- R4, R5, R6- Failed transmission network
- R7, R8, R9- External impacts
- R10, R11- Other reasons





Reasons:

**R3**      **Overload**

**R7, R8, R9**      **External impacts (animals...)**

**R4, R5, R6**      **Failure in the transmission network**

**R10, R11**      **Other reasons**

nbr	Country	Substation	Reason	Energie not supplied [ MWh ]	Total loss of power [ MW ]	Restoration time [ min ]	Equivalent time of interruption <sup>1</sup>
1	D	Gersteinwerk	R8	1200	610	118	0,65
2	E	Badalona	R6	398	0	43	0,00
3	PL	Slupsk	R6	105	473	21	1,86
4	I	Sorgente	R8	7	136	3	0,23
5	I	Montecorvino	R8	7	120	17	0,20
6	E	Viladecans	R5	6	0	3	0,00
7	P	Ferro	R7	5	0	8	0,00
8	E	Prosperidad	R5	1	0	2	0,00
9	A	Dürnrohr	R11	0	0	349	0,00
10	CZ	Dukovany	R11	0	820	247	7,39
11	A	Ybbsfeld	R9	0	0	539	0,00
12	A	Westtirol	R5	0	0	456	0,00
13	A	Tauern	R7	0	0	42	0,00

<sup>1</sup> ( year [in min] \* power loss ) / consumption last 12 months

# 11

## Scheduled exchanges in MWh

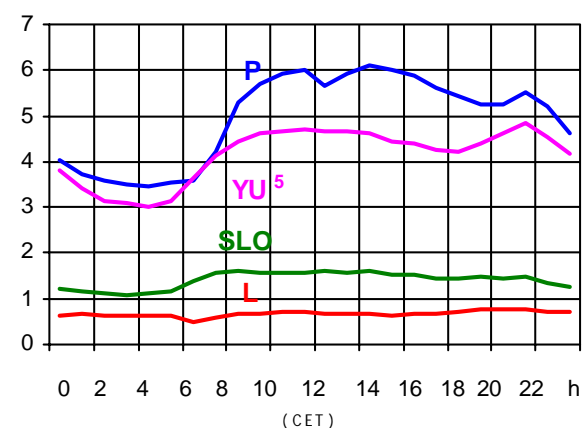
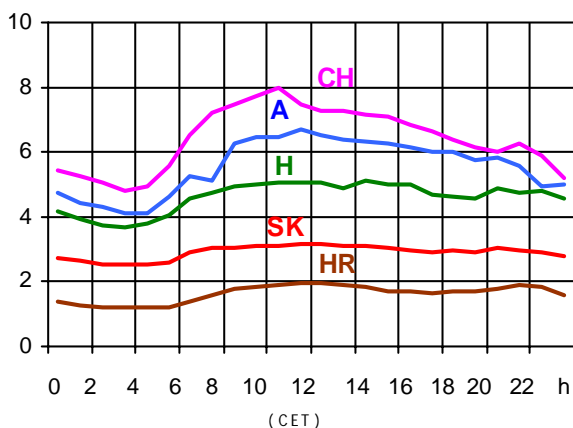
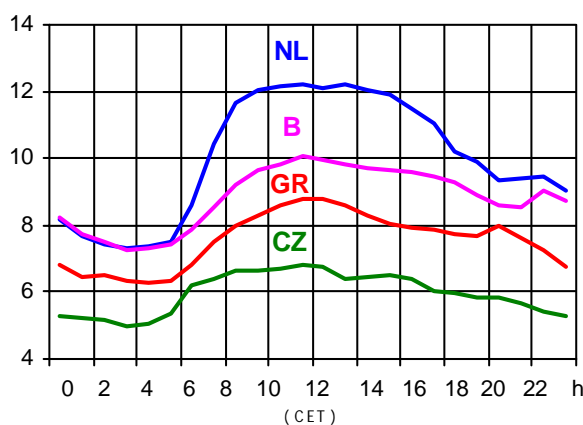
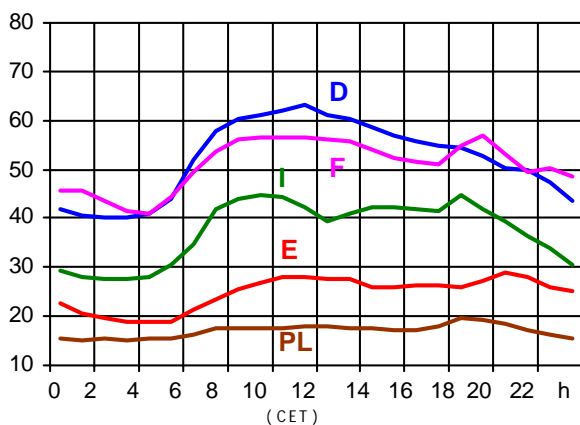
Control area	Prog_exp	Prog_imp	Prog_exp3	Prog_imp3	Prog_exp11	Prog_imp11
B	362374	728191	606	1081	525	1017
D	1882202	3303864	2217	3391	2251	8537
E	527036	736838	605	1000	148	1000
F	6458311	917960	9009	1490	8682	1266
GR	102620	340262	200	261	0	500
I	79701	3025994	9	3519	126	3343
SLO	n.a.	n.a.	n.a.	n.a.	n.a.	n.a.
HR	88805	395079	177	717	95	595
YU	249175	444951	210	323	251	757
NL	381982	1892077	502	2414	160	2391
A	657562	921315	800	965	1172	1673
P	12365	353521	0	469	100	156
CH	2724287	1901161	1647	2795	5543	2423
CZ	1550081	222990	2165	307	2211	338
H	488165	939530	690	935	822	1547
PL	457999	191290	283	80	1333	425
SK	513769	233132	637	88	727	165

- Control areas can differ from national borders ( i.e. German block which includes parts of A, L and DK ).
- Values are calculated on an hourly base ( MWh ).
- This values are not the provisional values entered in the VULCANUS system, but the definitive values after an eventual correction during the actual date.
- Prog\_exp: Sum of all positive values of every hour of every border
- Prog\_imp: Sum of all negative values of every hour of every border
- Prog\_exp3: Sum of all positive values the third Wednesday from 02:00 to 03:00 a.m.
- Prog\_imp3: Sum of all negative values the third Wednesday from 02:00 to 03:00 a.m.
- Prog\_exp11: Sum of all positive values the third Wednesday from 10:00 to 11:00 a.m.
- Prog\_imp11: Sum of all negative values the third Wednesday from 10:00 to 11:00 a.m.
- YU = FRY + FYROM (Federal Republic of Yugoslavia and Former Yugoslav Republic of Macedonia)



### Consumption hourly load curves<sup>1</sup> on 17.07.02

Values in GW



#### Peak load on 3<sup>rd</sup> Wednesday<sup>1</sup>

17.07.02	B	D	E	F	GR	I	SLO	HR	YU <sup>5</sup>	L	NL	A	P	CH	CZ	H	PL	SK	UCTE
MW	10329	63300	29869	54446	8786	47812	1599	1943	4863	761	12285	7126	6132	8050	6835	5110	15898	3160	284626
Δ % <sup>2</sup>	5,8	1,0	2,9	0,8	6,2	0,8	7,8	4,9	-0,9	-6,2	4,3	10,0	12,0	3,5	5,0	4,3	2,3	3,7	2,1

#### Power produced in parallel operation<sup>3</sup>

17.07.02	B	D	E	F	GR	I	SLO	HR	YU <sup>5</sup>	L	NL	A	P	CH	CZ	H	PL	SK	Others <sup>4</sup>	UCTE
MW	9391	68100	27590	62962	7657	41103	1658	1900	4055	701	10042	5959	5586	11868	8786	4139	16753	3162	1260	291412

<sup>1</sup> Percentage as referred to total values in %

B	D	E	F	GR <sup>6</sup>	I	SLO	HR	YU <sup>5</sup>	L	NL	A	P	CH	CZ	H	PL	SK
100	91	94	97	91	100	95	100	96	99	90	82	87	100	100	100	100	100

<sup>2</sup> Variation as compared to corresponding month of the previous year

<sup>3</sup> Including autoproduction

<sup>4</sup> Denmark (Jutland)

<sup>5</sup> YU = FRY + FYROM (Federal Republic of Yugoslavia and Former Yugoslav Republic of Macedonia)

<sup>6</sup> The representativity of data referring to the whole country including the isolated systems of the Greek island is 91%.

The representativity of data referring to the mainland interconnected system is 98%.

## Existing lines with towers for lines with 2 circuits mounted

	B	D	E	F	GR	I	SLO	HR	JIEL	L	NL	A	P	CH	CZ	H	PL	SK	CX	
2011	8940	52	3880	67511	228	4845	1757	358	158	121	325	1728	140	18	694	828	312	734	381	323
2008	420	158	4787	4283	18	4428	134	807	105	115	3677	1819	175	82	522	10316	438	811	321	458

	F	I	SLO	HR	JIEL	L	NL	A	P	CH	CZ	H	PL	SK
B	2/2					2/-	-/4							
D	2/4					8/-	-/8	9/3		5/7	1/4			
E	2/2								3/2					
	F	3/3								5/5				
	GR	-/1			-/1									
		I	1/1					1/-		6/2				
			SLO	2/3				1/2						
				HR	7/3									
									JIEL					
									A	1/2	2/1	2/1		
													CZ	2/2
													H	2/2
													PL	2/2



## Contact

Boulevard Saint-Michel, 15  
 B-1040 Brussels – Belgium  
 Tel +32 2 741 69 40 – Fax +32 2 741 69 49

info@ucte.org  
 www.ucte.org