



April 2002

Table of contents		Page
1	Electricity supply situation of the countries	2
2	Physical energy flows	3
3	Monthly consumption	4
4	Monthly consumption variation	5
5	Consumption of last 12 months	6
6	Variation of the last 12 months' consumption	7
7	Load flows (night)	8
8	Load flows (day)	9
9	Unavailability of international tie lines (major events)	10
10	Network reliability (major events)	12
11	Scheduled exchanges	13
12	Load on the 3 rd Wednesday	14

Countries	B	D	E	F	GR	I	SLO	HR	YU ⁴	L	NL	A	P	CH	CZ	H	PL	SK	UCTE
Net production in GWh¹																			
Hy	128	2130	2197	3883	212	2746	178	464	1255	72	0	2786	662	2355	264	22	346	437	20137
Tn	3625	12010	4214	35539	-	-	449	0	0	0	325	0	0	2232	859	882	0	1303	61438
Tc	2615	27218	10294	3836	3224	18159	433	454	2484	193	7189	1262	2622	213	4578	1695	10935	784	98188
Total	6368 ²	41358 ²	16705 ²	43258	3436 ²	20905	1060	918 ²	3739	265	7514 ²	4048	3284 ²	4800 ²	5701 ²	2599 ²	11281 ²	2524 ²	179763
Exchange balance in GWh																			
Imp. = +	529	777	705	-7032	255	4362	-87	275	97	321	1186	81	-39	90	-871	376	-463	-417	145
Exp. = -																			
Consumption of pumps in GWh																			
	123	479	443	631	91	876	0	8	136	84	0	100	29	128	31	0	201	17	3377
Consumption in GWh¹																			
monthly	6774	41656	16967	35595	3600	24391	973	1185	3700	502	8700	4029	3216	4762	4799	2975	10617	2090	176531
Δ^3 [%]	-1,9	2,5	9,2	-1,1	9,8	3,0	10,4	3,0	-0,4	2,9	2,5	-7,6	6,7	1,0	-2,2	0,6	-3,1	0,1	1,6
last 12 months	82780	497207	209059	437506	46911	307246	10790	14723	44744	5943	108879	52140	40359	58129	58358	36851	133438	25847	2170910
Δ^3 [%]	-1,0	0,2	5,9	2,7	8,3	2,5	-4,0	7,1	3,4	1,4	5,8	0,5	5,2	2,3	1,4	2,4	-1,5	1,6	2,2
Energy capability factor																			
	-	1,21	-	-	0,90	0,63	1,02	0,89	0,94	-	-	-	0,56	1,02	-	-	-	0,75	0,9

¹ Percentage as referred to total values in %

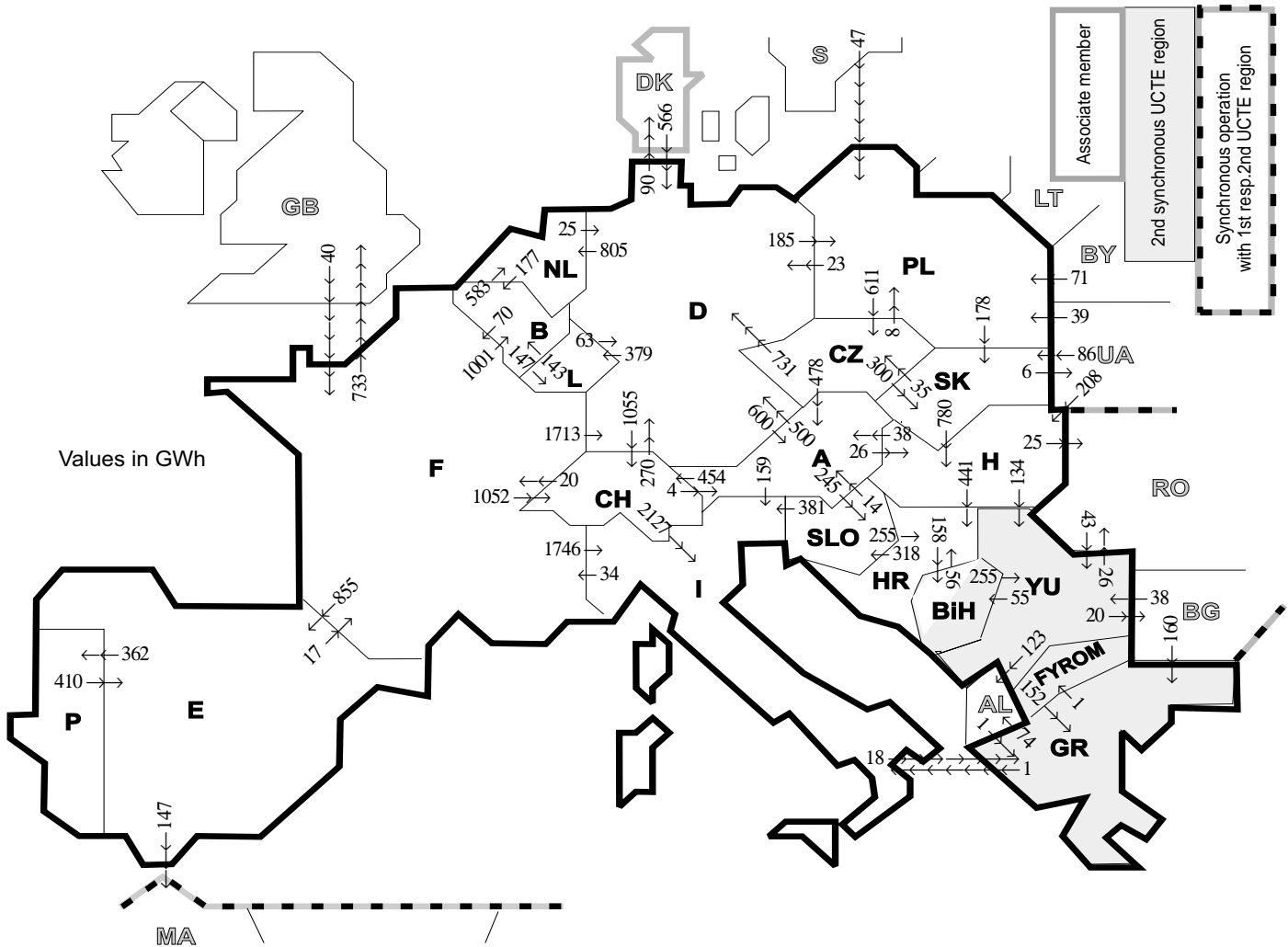
Countries	B	D	E	F	GR ⁵	I	SLO	HR	YU	L	NL	A	P	CH	CZ	H	PL	SK
Production	100	93	94	97	91	100	95	100	96	98	100	84	91	100	100	100	100	100
Consumption	100	93	94	97	91	100	95	100	96	99	100	90	91	100	100	100	100	100

² Including deliveries from industry

³ Variation as compared to corresponding period of the previous year and representativity 100%

⁴ YU = FRY + FYROM (Federal Republic of Yugoslavia and Former Yugoslav Republic of Macedonia)

⁵ The representativity of data referring to the whole country including the isolated systems of the Greek island is 91%. The representativity of data referring to the mainland interconnected system is 98%.



Exporting countries	Importing countries																				Σ Export	
	B	D	E	F	GR	I	SLO	HR	BiH	YU	L	NL	A	P	CH	CZ	H	PL	SK	III ¹		
B	-	-	-	70	-	-	-	-	-	-	147	583	-	-	-	-	-	-	-	-	-	800
D	-	-	-	0	-	-	-	-	-	-	379	805	600	-	1055	0	-	185	-	-	90	3114
E	-	-	-	17	-	-	-	-	-	-	-	-	-	362	-	-	-	-	-	-	147	526
F	1001	1713	855	-	1746	-	-	-	-	-	-	-	-	-	1052	-	-	-	-	-	-	7100
GR	-	-	-	-	-	1	-	-	-	1	-	-	-	-	-	-	-	-	-	-	74	76
I	-	-	-	34	18	-	0	-	-	-	-	-	0	-	0	-	-	-	-	-	-	52
SLO	-	-	-	-	-	381	-	255	-	-	-	-	14	-	-	-	-	-	-	-	-	650
HR	-	-	-	-	-	-	318	-	158	2	-	-	-	-	-	-	0	-	-	-	-	478
BiH	-	-	-	-	-	-	-	56	-	255	-	-	-	-	-	-	-	-	-	-	-	311
YU	-	-	-	-	152	-	-	0	55	-	-	-	-	-	-	-	0	-	-	-	169	376
L	143	63	-	-	-	-	-	-	-	-	-	-	-	-	-	-	-	-	-	-	-	206
NL	177	25	-	-	-	-	-	-	-	-	-	-	-	-	-	-	-	-	-	-	-	202
A	-	500	-	-	-	159	245	-	-	-	-	-	-	-	454	0	26	-	-	-	-	1384
P	-	-	410	-	-	-	-	-	-	-	-	-	-	-	-	-	-	-	-	-	-	410
CH	-	270	-	20	2127	-	-	-	-	-	4	-	-	-	-	-	-	-	-	-	-	2421
CZ	-	731	-	-	-	-	-	-	-	-	-	-	478	-	-	-	-	8	300	-	-	1517
H	-	-	-	-	-	-	-	441	-	134	-	-	-	-	-	-	-	-	0	25	-	638
PL	-	23	-	-	-	-	-	-	-	-	-	-	-	-	-	611	-	-	178	0	-	812
SK	-	-	-	-	-	-	-	-	-	-	-	-	-	-	-	35	780	0	-	-	6	821
III ¹	-	566	0	40	161	-	-	-	-	81	-	-	-	-	-	-	208	157	86	-	-	1299
Σ Import	1321	3891	1265	181	331	4414	563	752	213	473	526	1388	1134	362	2561	646	1014	350	564	1244	23193	

Sum of physical energy flows between UCTE countries = 20650 GWh

Total physical energy flows = 23193 GWh

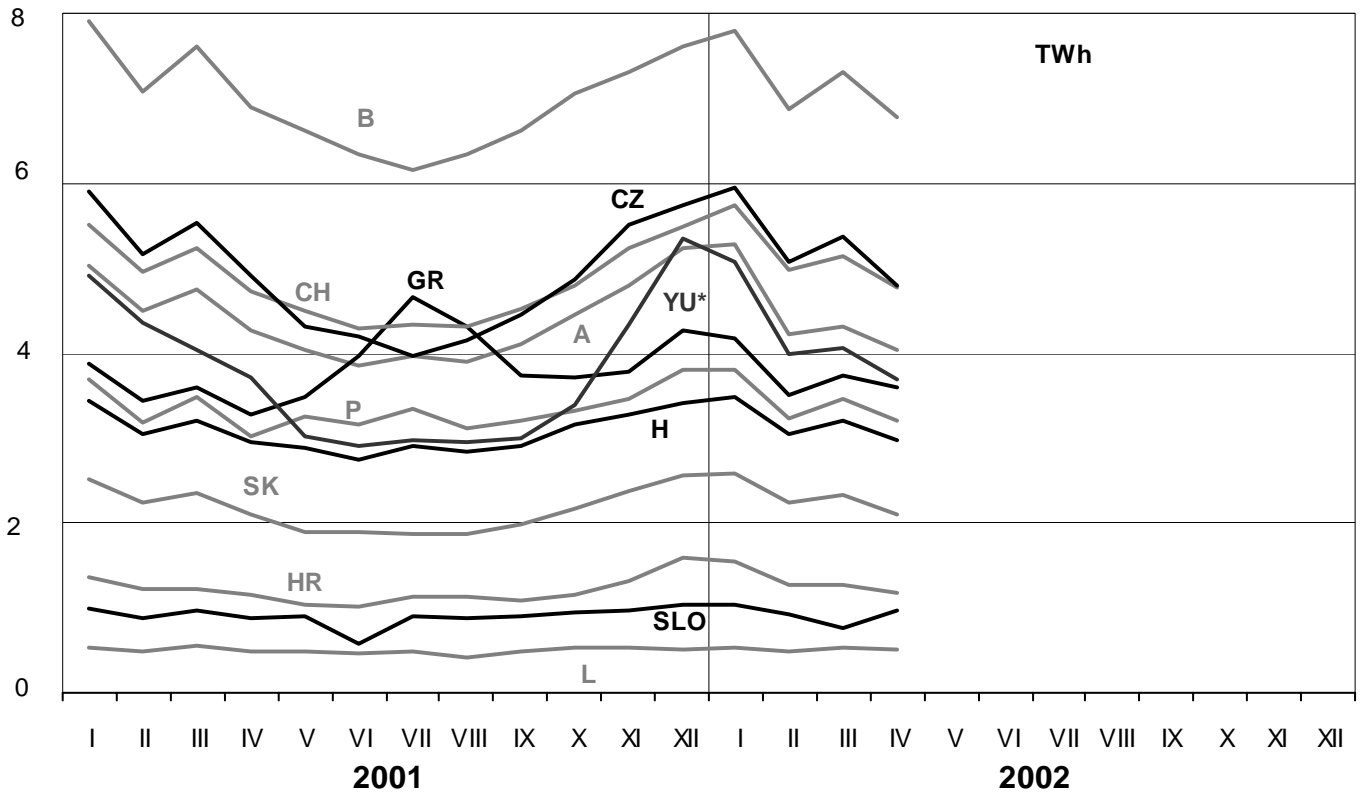
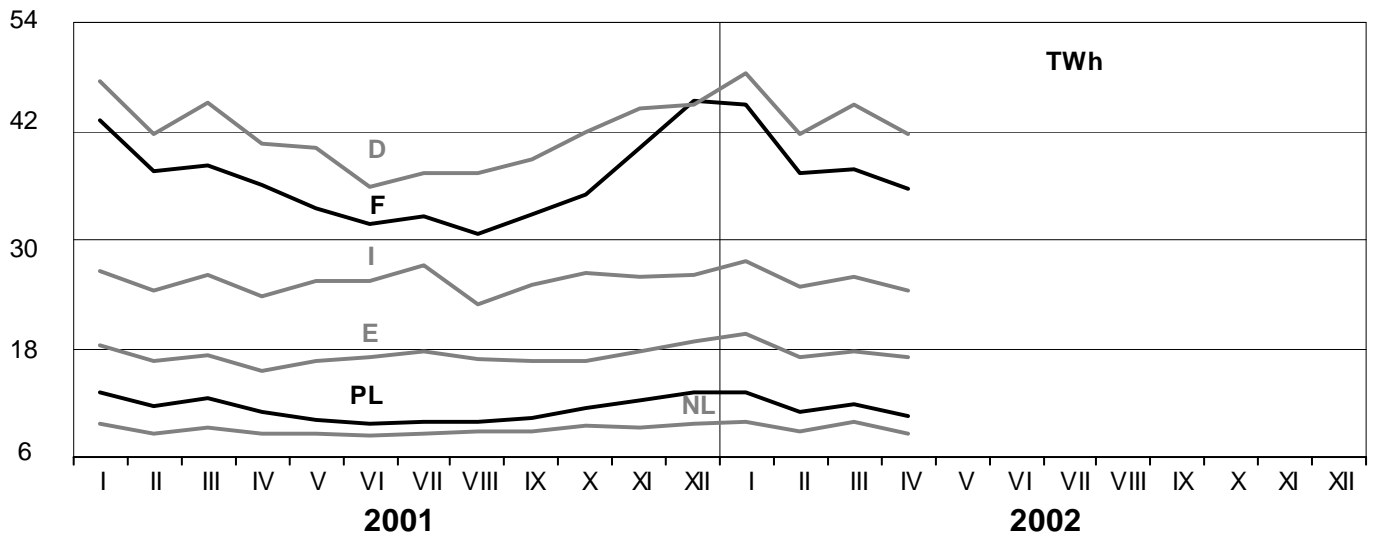
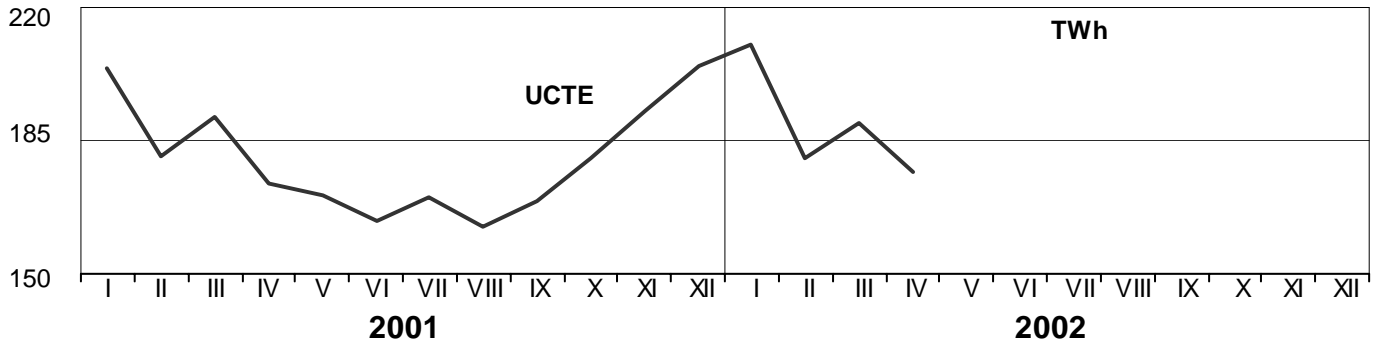
¹ III = Third countries: Albania, Belarus, Bulgaria, Denmark, Great Britain, Morocco, Rumania, Sweden and Ukraine

These physical energy flows were measured on the cross-frontier transmission lines (≥ 110 kV) listed in table 9 of the Statistical Yearbook. These values may differ from the official statistics and the exchange balances in chapter 1.

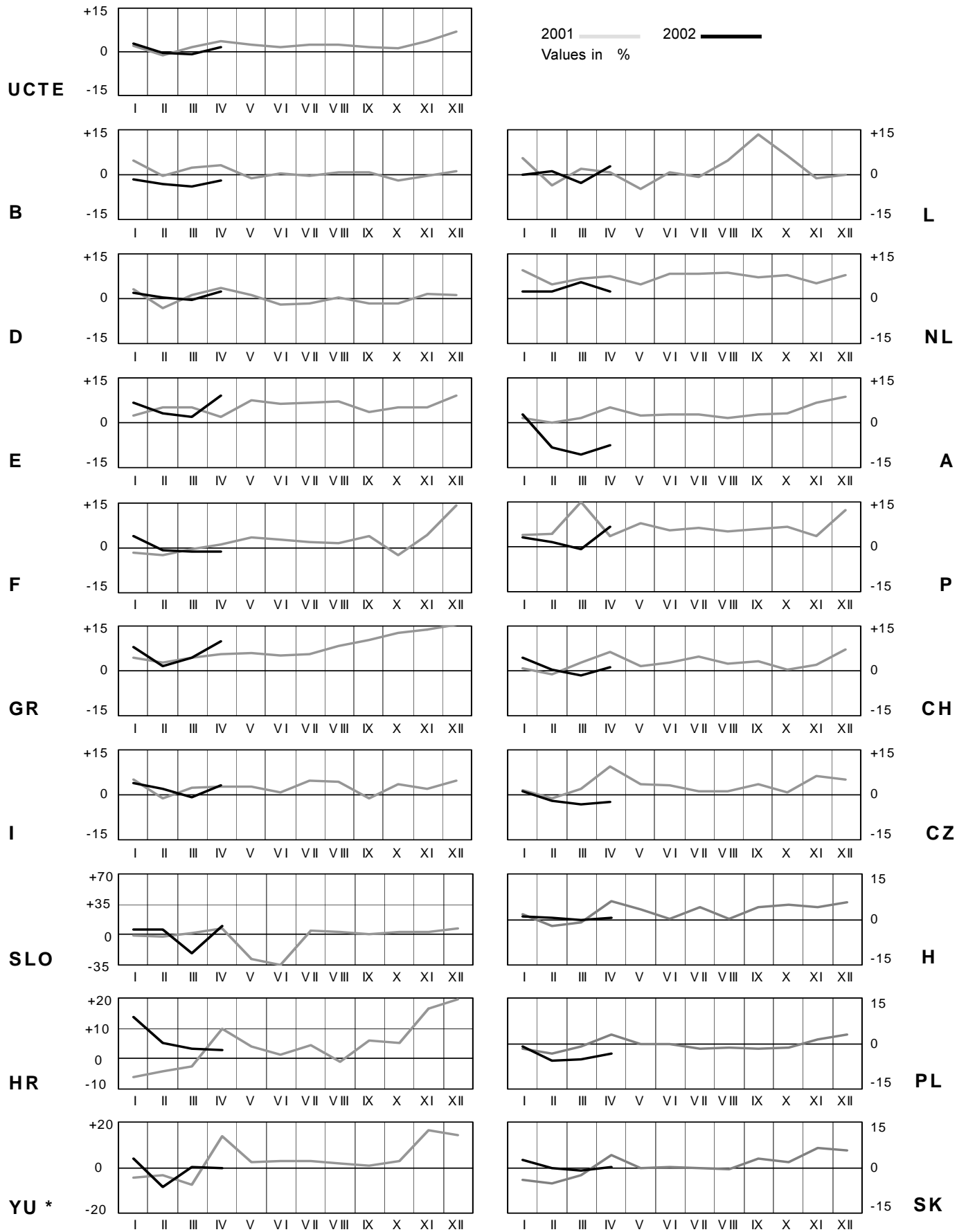
3

Monthly consumption

April 2002



* YU = FRY + FYROM (Federal Republic of Yugoslavia and Former Yugoslav Republic of Macedonia)

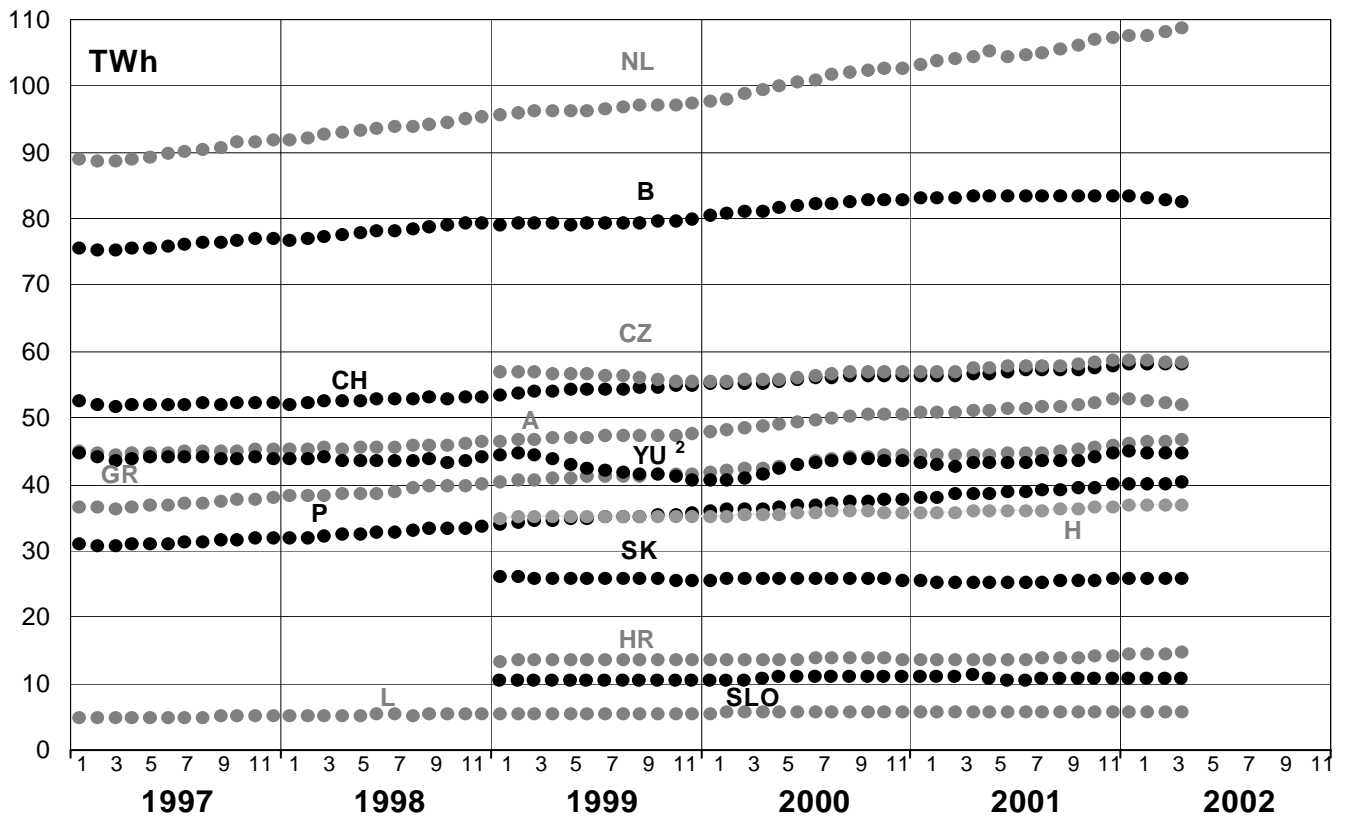
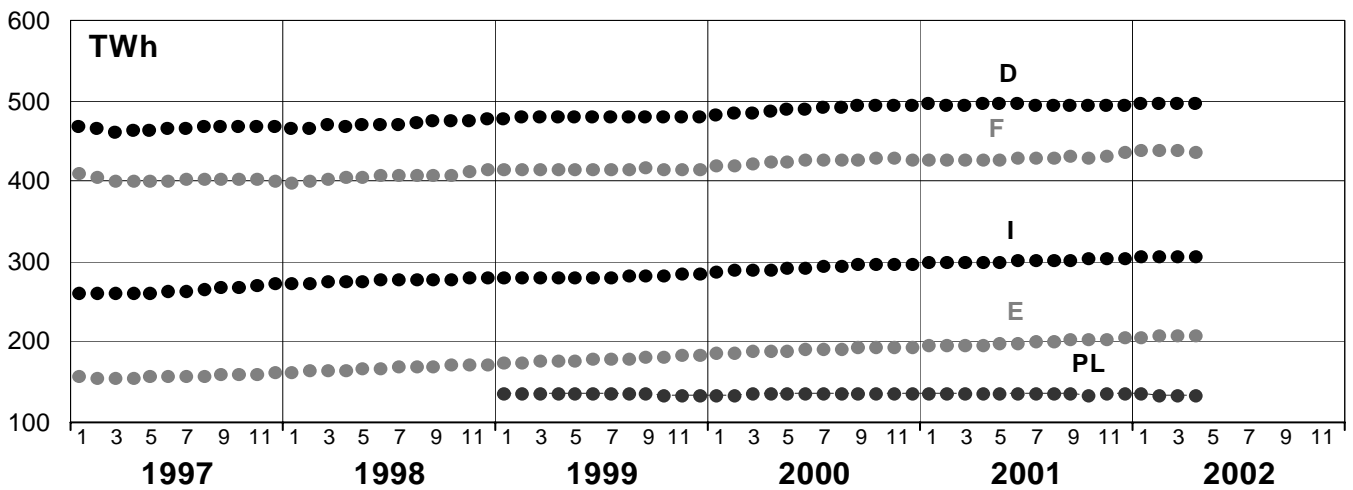
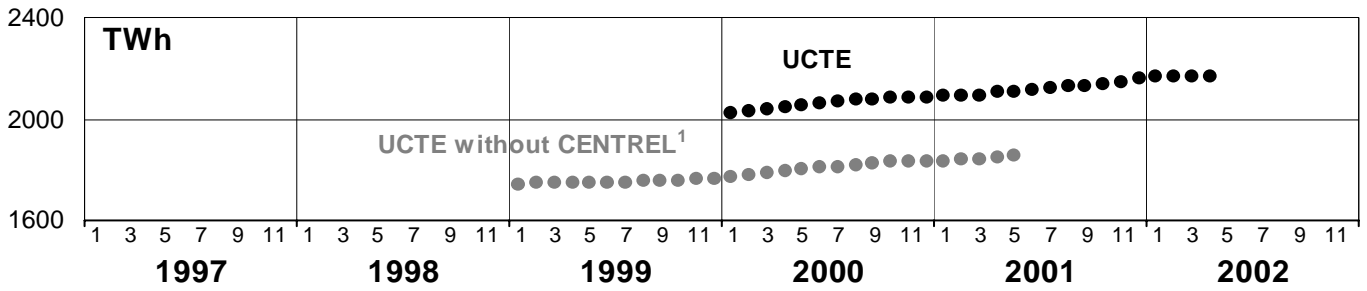


* YU = FRY + FYROM (Federal Republic of Yugoslavia and Former Yugoslav Republic of Macedonia)

5

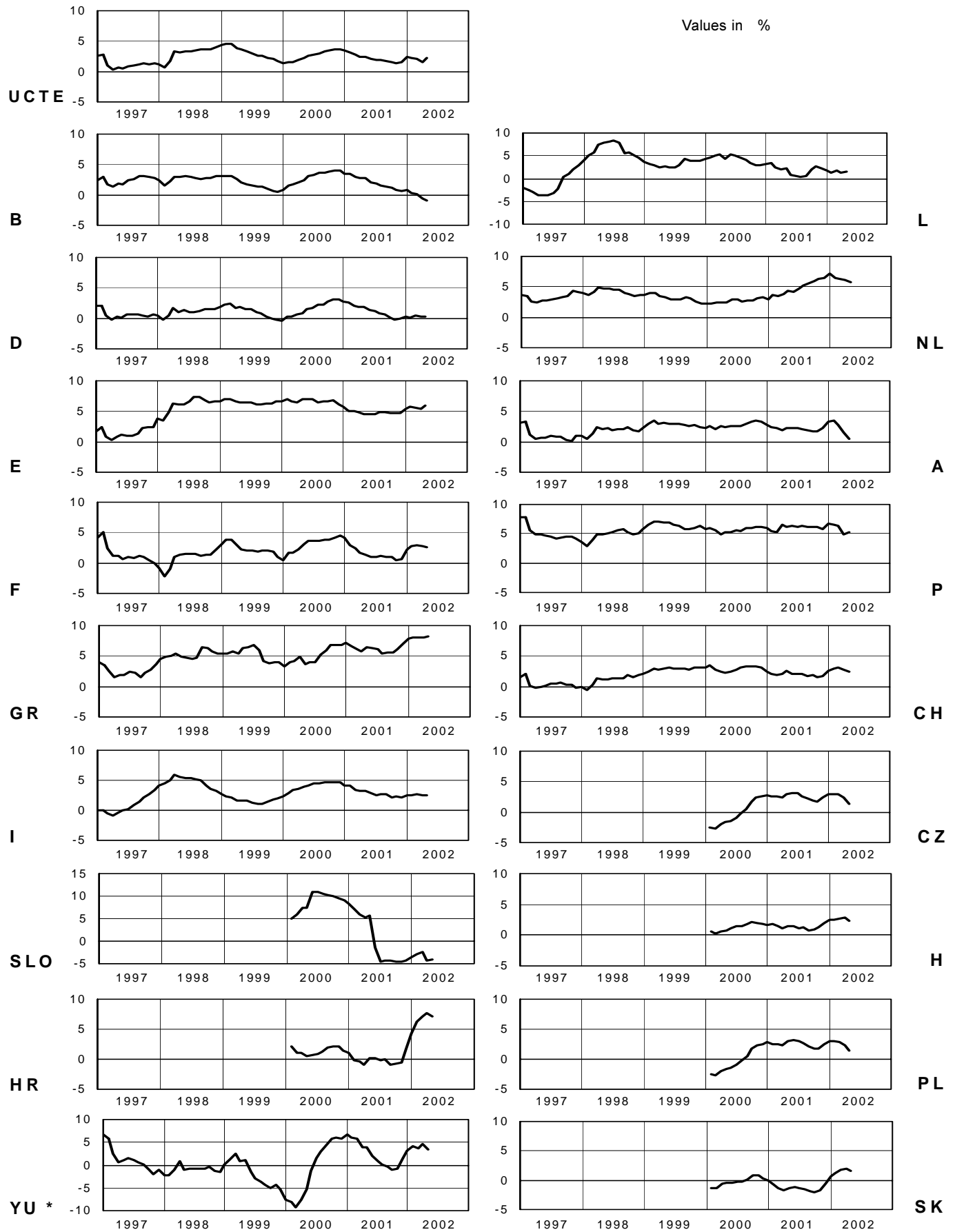
Consumption of last 12 months

April 2002

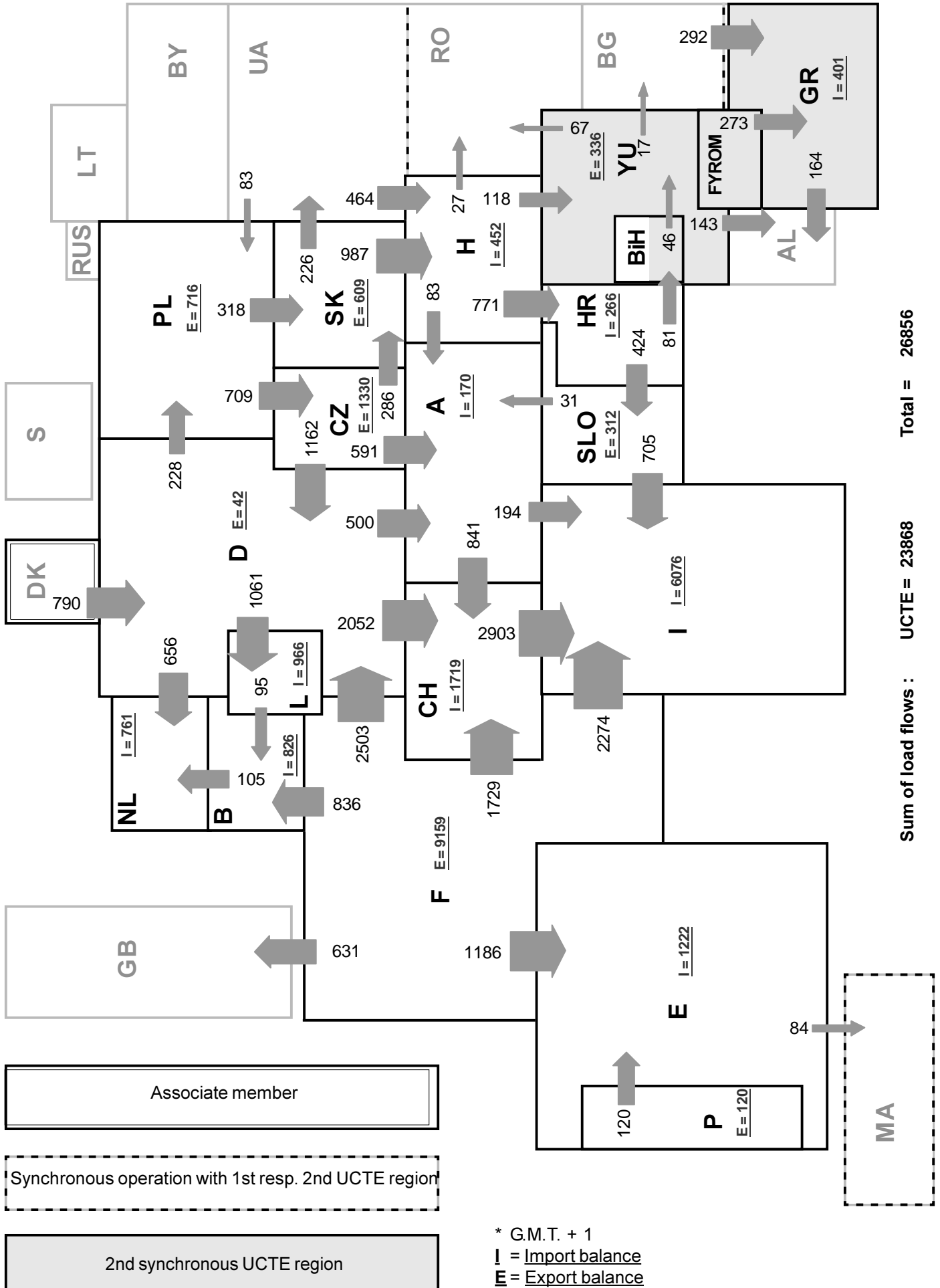


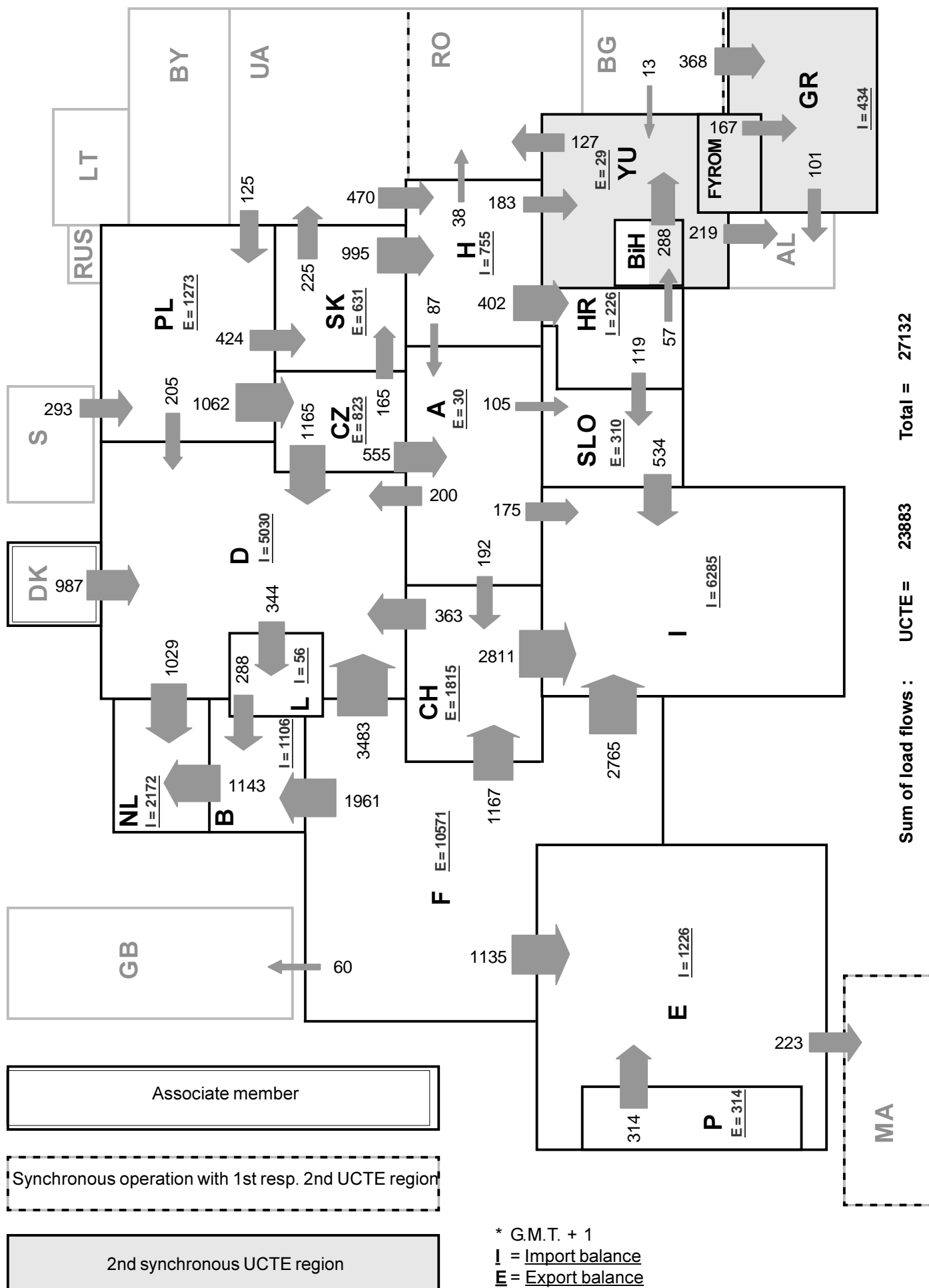
¹ CENTREL countries CZ, H, PL, SK member of UCTE from May 2001

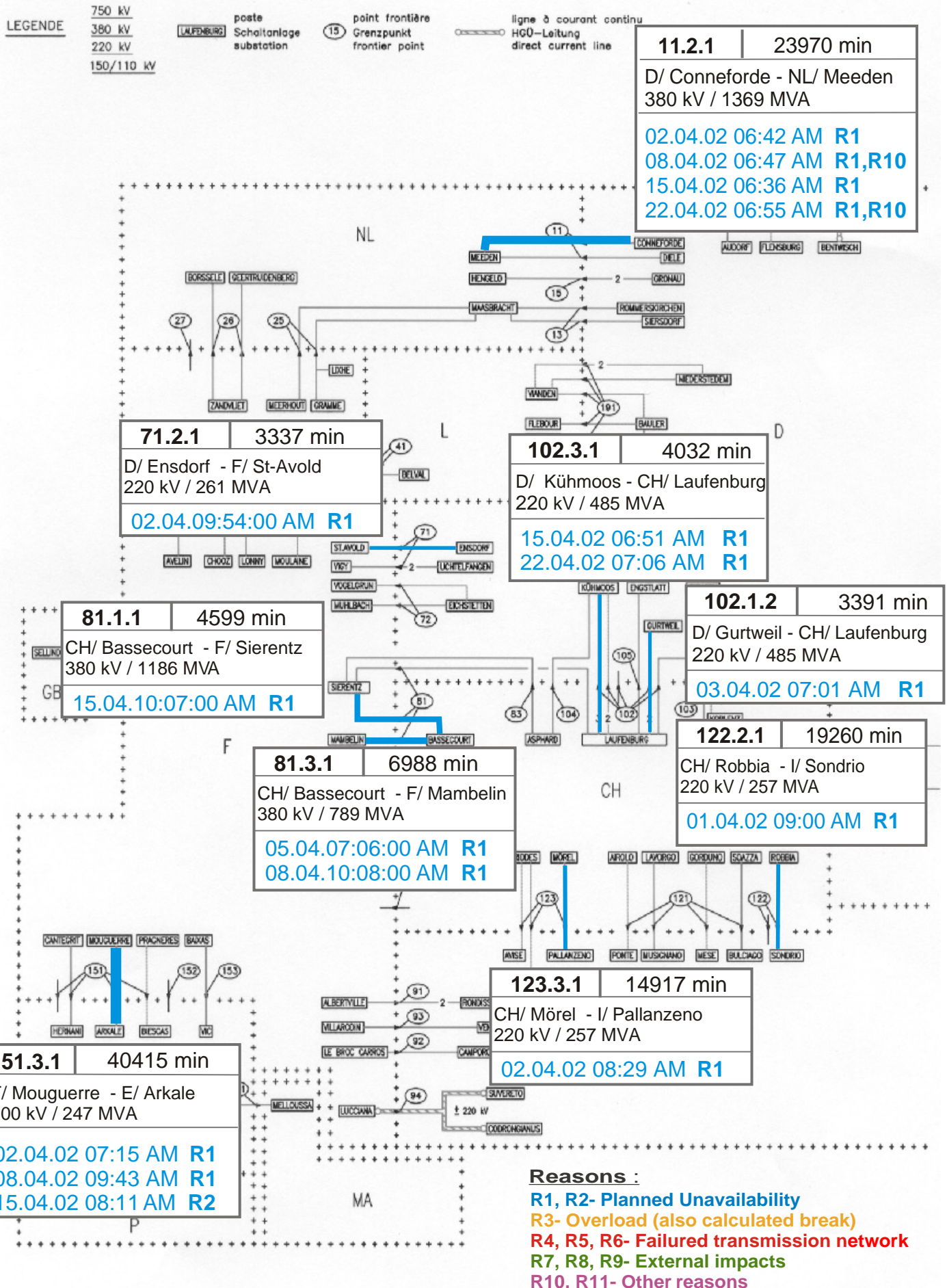
² YU = FRY + FYROM (Federal Republic of Yugoslavia and Former Yugoslav Republic of Macedonia)



* YU = FRY + FYROM (Federal Republic of Yugoslavia and Former Yugoslav Republic of Macedonia)







LEGENDE

750 kV
380 kV
220 kV
150/110 kV

LAUFFENBURG poste
Schaltanlage
substation

(15) point frontière
Grenzpunkt
frontier point

ligne à courant continu
HGÜ-Leitung
direct current line

401.1.1	43200 min
D/ Herrenwyk - S/ Kruseberg 450 kV / 600 MVA	
01.04.02 00:00 AM R7	

704.1.1	12546 min
PL/ Slupsk - S/ Stårno 450 kV / 600 MVA	
01.04.02 05:04 PM R2	
03.04.02 10:17 AM R1	
22.04.02 06:59 AM R7	

502.1.2	4007 min
D/ Hagenwerder - PL/ Mikulowa 380 kV / 1427 MVA	
15.04.02 09:34 AM R1	
16.04.02 08:05 AM R1	
17.04.02 07:17 AM R1	
18.04.02 07:52 AM R1	
23.04.02 07:52 AM R1	
24.04.02 07:20 AM R1	
25.04.02 08:15 AM R1	

245.1.1	6462 min
CZ/ Liskovec - PL/ Bujakow 400 kV / 400 MVA	
26.04.02 06:17 AM R1	

111.3.1	11496 min
A/ Bürs - D/ Dellmensingen 380 kV / 492 MVA	
16.04.02 09:56 AM R1	
22.04.02 08:00 AM R1	
30.04.02 07:11 AM R1	

246.1.1	6325 min
CZ/ Liskovec - PL/ Bujakow 400 kV / 400 MVA	
26.04.02 06:23 AM R1	

497.1.1	29503 min
CZ/ Sokolnice - SK/ Stupava 400 kV / 1711 MVA	
08.04.02 07:28 AM R1	

111.1.2	6109 min
A/ Bürs - D/ Obermooweiler 380 kV / 1369 MVA	
03.04.02 06:35 AM R1	

720.1.1	23079 min
H/ Albertirsa - UA/ Zahidno Ukrainska 750 kV / 4000 MVA	
01.04.02 00:00 AM R10	
20.04.02 09:38 AM R10	

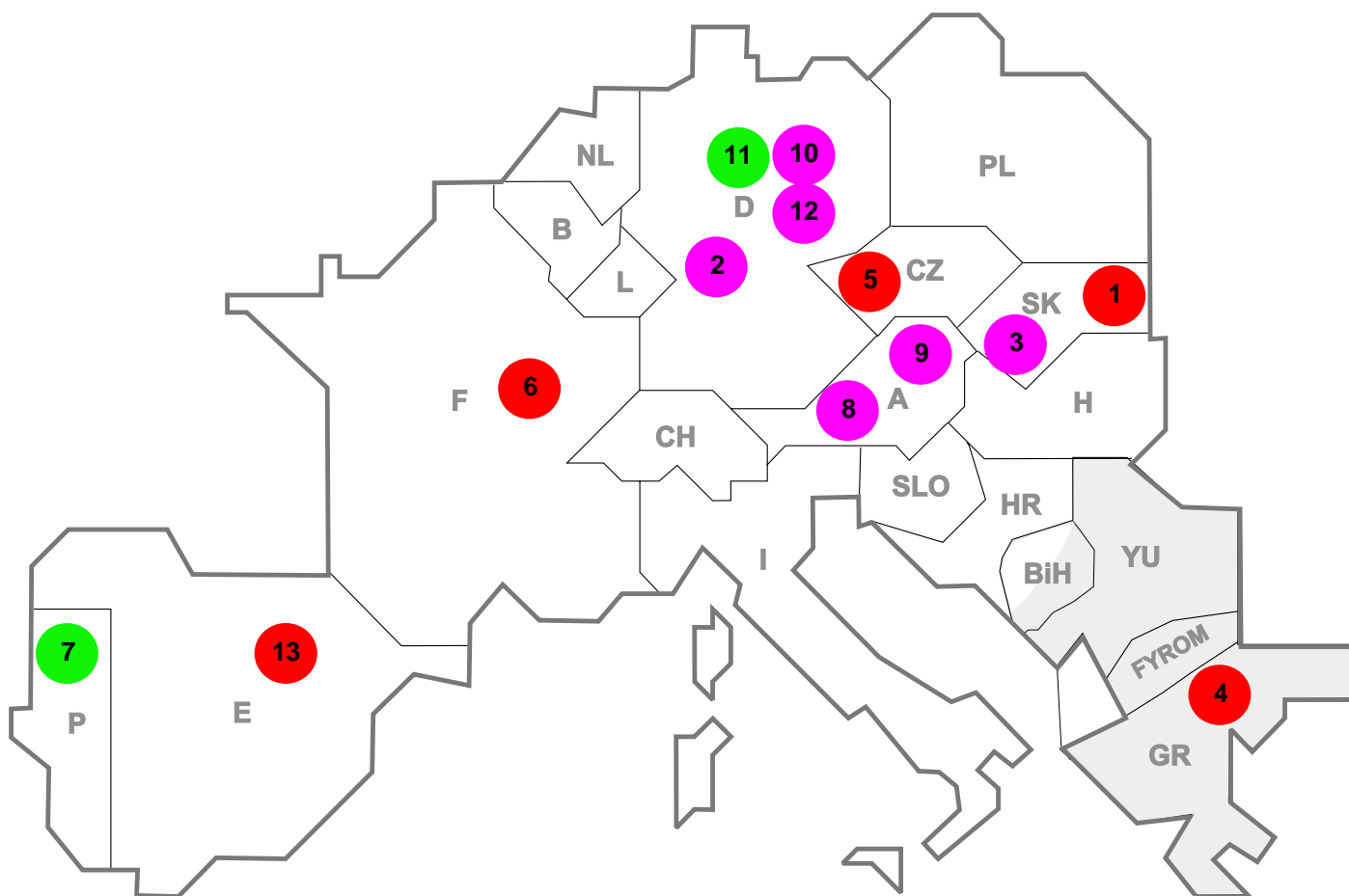
211.1.1	1887 min
A/ Wien Süd-Ost - H/ Győr 220 kV / 305 MVA	
02.04.02 07:38 AM R1, R11	
03.04.02 07:01 AM R1	
04.04.02 07:06 AM R1	
05.04.02 06:59 AM R1	

371.2.1	18719 min
HR/ Nijemci - YU/ Šid 110 kV / 76 MVA	
01.04.02 00:00 AM R10	

301.1.1	10814 min
GR/ Thessaloniki - BG/ Blagoevgrad 380 kV / 1300 MVA	
23.04.02 07:08 AM R1	

Reasons :

- R1, R2- Planned Unavailability
- R3- Overload (also calculated break)
- R4, R5, R6- Failed transmission network
- R7, R8, R9- External impacts
- R10, R11- Other reasons



Reasons:

R3 Overload

R7, R8, R9 External impacts (animals...)

R4, R5, R6 Failure in the transmission network

R10, R11 Other reasons

nbr	Country	Substation	Reason	Energie not supplied [MWh]	Total loss of power [MW]	Restoration time [min]	Equivalent time of interruption ¹
1	SK	Bohunice (V1)	R5	3407	324	631	6,59
2	D	Weisweiler	R10	1409	278	304	0,29
3	SK	Gabcikovo	R10	238	197	70	4,01
4	GR	Ag. DEmetrios	R6	225	900	15	10,08
5	CZ	Cechy Stred	R4	21	0	16	0,00
6	F	Pasquier	R6	10	146	8	0,18
7	P	Chafariz	R8	6	0	6	0,00
8	A	Obersilach	R10	0	0	17	0,00
9	A	Wien-Südost	R11	0	0	22	0,00
10	D	UW Marzahn	R10	0	0	2922	0,00
11	D	UW Marzahn	R7	0	0	2922	0,00
12	D	UW Mitte	R10	0	0	193	0,00
13	E	Lada	R5	0	1606	52	4,04

¹ (year [in min] * power loss) / consumption last 12 months

Control area	Prog_exp	Prog_imp	Prog_exp3	Prog_imp3	Prog_exp11	Prog_imp11
B	423680	1032143	253	1145	324	1218
D	2011947	2145167	3027	2309	1489	6107
E	213076	940445	183	1430	215	1501
F	7991514	1031570	10386	1297	11844	1344
GR	0	244327	0	346	0	360
I	52473	4414391	0	6076	0	6285
SLO	n.a.	n.a.	n.a.	n.a.	n.a.	n.a.
HR	117558	386339	220	451	106	391
YU	429151	535642	740	360	735	640
NL	641195	1840447	1383	2161	591	2797
A	690422	771591	1220	547	754	1203
P	148092	101923	318	87	500	196
CH	2355420	2517322	2755	4489	5459	3524
CZ	1358234	397186	2024	619	1774	813
H	485460	866453	598	1050	735	1478
PL	528331	85717	711	83	1533	425
SK	561844	143508	690	109	895	274

- Control areas can differ from national borders (i.e. German block which includes parts of A, L and DK).

- Values are calculated on an hourly base (MWh).

- This values are not the provisional values entered in the VULCANUS system, but the definitive values after an eventual correction during the actual date.

- Prog_exp: Sum of all positive values of every hour of every border

- Prog_imp: Sum of all negative values of every hour of every border

- Prog_exp3: Sum of all positive values the third Wednesday from 02:00 to 03:00 a.m.

- Prog_imp3: Sum of all negative values the third Wednesday from 02:00 to 03:00 a.m.

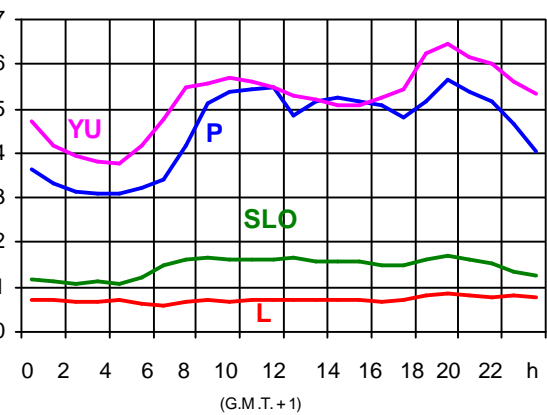
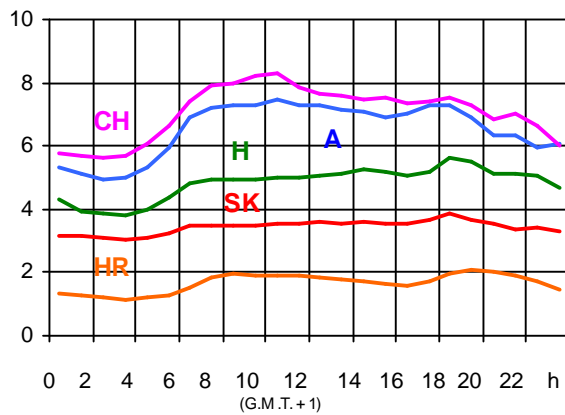
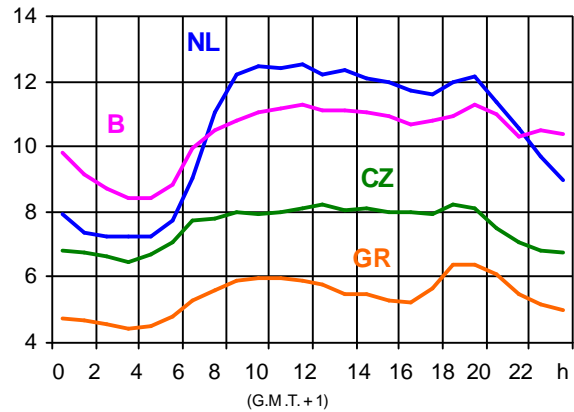
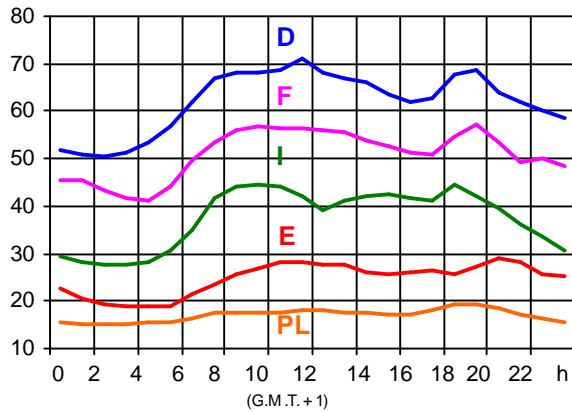
- Prog_exp11: Sum of all positive values the third Wednesday from 10:00 to 11:00 a.m.

- Prog_imp11: Sum of all negative values the third Wednesday from 10:00 to 11:00 a.m.

- YU = FRY + FYROM (Federal Republic of Yugoslavia and Former Yugoslav Republic of Macedonia)

Consumption hourly load curves¹ on 20.03.02

Values in GW



Peak load on 3rd Wednesday¹

20.03.02	B	D	E	F	GR	I	SLO	HR	YU ⁵	L	NL	A	P	CH	CZ	H	PL	SK	UCTE
MW	11397	71100	28838	57026	6411	44781	1593	2092	6440	852	12545	7496	5674	8420	8245	5618	19432	3837	284858
Δ % ²	-6,1	1,0	3,3	-1,2	3,4	0,6	1,6	2,4	-1,3	3,1	-3,0	1,5	-0,4	-6,4	-7,0	1,3	-4,5	0,0	-3,7

Power produced in parallel operation³

20.03.02	B	D	E	F	GR	I	SLO	HR	YU ⁵	L	NL	A	P	CH	CZ	H	PL	SK	Others ⁴	UCTE
MW	10493	75500	26729	67389	5571	37520	1760	1876	4911	716	9543	7824	5731	9661	10122	4453	19504	3896	1770	293538

¹ Percentage as referred to total values in %

B	D	E	F	GR ⁶	I	SLO	HR	YU ⁵	L	NL	A	P	CH	CZ	H	PL	SK
100	91	94	97	91	100	95	100	96	99	90	82	87	100	100	100	100	100

² Variation as compared to corresponding month of the previous year

³ Including autoproduction

⁴ Denmark (Jutland)

⁵ YU = FRY + FYROM (Federal Republic of Yugoslavia and Former Yugoslav Republic of Macedonia)

⁶ The representativity of data referring to the whole country including the isolated systems of the Greek island is 91%.

The representativity of data referring to the mainland interconnected system is 98%.

Existing lines with towers for lines with 2 circuits mounted

	B	D	E	F	GR	I	SLO	HR	JIEL	L	NL	A	P	CH	CZ	H	PL	SK	CYPR	
2011	8940	52	3880	-67511	228	4845	1757	-258	-548	1231	325	1728	140	18	-694	828	312	-784	-381	-373
2008	420	108	4787	-4283	18	4428	134	807	-105	1115	3677	1819	-175	82	-522	-10316	438	-811	-371	-858

	F	I	SLO	HR	JIEL	L	NL	A	P	CH	CZ	H	PL	SK
B	2/2					2/-	-/4							
D	2/4					8/-	-/8	9/3		5/7	-/4			
E	2/2								3/2					
	F	3/3								5/5				
	GR	-/1			-/1									
		I	1/1					1/-		6/2				
			SLO	2/3				1/2						
				HR	7/3									
									JIEL					
									A	1/2	2/1	2/1		
													CZ	2/2
													H	-/2
													PL	-/2



Contact

Boulevard Saint-Michel, 15
 B-1040 Brussels – Belgium
 Tel +32 2 741 69 40 – Fax +32 2 741 69 49

info@ucte.org
 www.ucte.org