



March 2002

Table of contents		Page
1	Electricity supply situation of the countries	2
2	Physical energy flows	3
3	Monthly consumption	4
4	Monthly consumption variation	5
5	Consumption of last 12 months	6
6	Variation of the last 12 months' consumption	7
7	Load flows (night)	8
8	Load flows (day)	9
9	Unavailability of international tie lines (major events)	10
10	Network reliability (major events)	12
11	Scheduled exchanges	13
12	Load on the 3 rd Wednesday	14

Countries	B	D	E	F	GR	I	SLO	HR	YU ⁴	L	NL	A	P	CH	CZ	H	PL	SK	UCTE ⁵
Net production in GWh¹																			
Hy	135	2113	2308	5203	175	2776	297	431	1107	78	0	n.a.	850	2250	383	5	416	523	19050
Tn	4138	13336	4207	35584	-	-	157	0	0	0	337	n.a.	0	2377	1248	1117	0	1354	63855
Tc	2630	30051	10844	4626	3392	19473	423	515	2824	75	8119	n.a.	2668	235	4770	1767	12126	776	105314
Total	6903 ²	45500 ²	17359 ²	45413	3567 ²	22249	877	946 ²	3931	153	8456 ²	n.a.	3518 ²	4862 ²	6401 ²	2889 ²	12542 ²	2653 ²	188219
Exchange balance in GWh																			
Imp. = +	507	-158	722	-6958	267	4610	-116	324	237	464	1382	n.a.	-21	410	-1007	311	-466	-308	200
Exp. = -																			
Consumption of pumps in GWh																			
	113	476	466	599	95	869	0	2	115	87	0	n.a.	37	120	33	0	195	24	3231
Consumption in GWh¹																			
monthly	7297	44866	17615	37856	3739	25990	761	1268	4053	530	9838	n.a.	3460	5152	5361	3200	11881	2321	185188
Δ^3 [%]	-4,0	-0,4	2,2	-1,1	4,1	-0,8	-21,4	3,1	0,5	-2,8	5,5	n.a.	-0,8	-1,4	-3,1	0,0	-5,1	-1,1	-0,6
last 12 months	82910	496189	207626	437914	46589	306535	10698	14689	44758	5929	108260	n.a.	40160	58082	58467	36833	133783	25845	2153841
Δ^3 [%]	-0,5	0,3	5,4	2,8	8,0	2,4	-4,3	7,7	4,6	1,3	5,8	n.a.	4,9	2,8	2,4	2,8	-1,0	1,9	2,3
Energy capability factor																			
	-	1,34	-	-	0,48	0,65	1,02	0,67	0,85	-	-	n.a.	0,73	1,11	-	-	-	1,15	0,9

¹ Percentage as referred to total values in %

Countries	B	D	E	F	GR ⁶	I	SLO	HR	YU	L	NL	A	P	CH	CZ	H	PL	SK
Production	100	93	94	97	91	100	95	100	96	98	100	n.a.	91	100	100	100	100	100
Consumption	100	93	94	97	91	100	95	100	96	99	100	n.a.	91	100	100	100	100	100

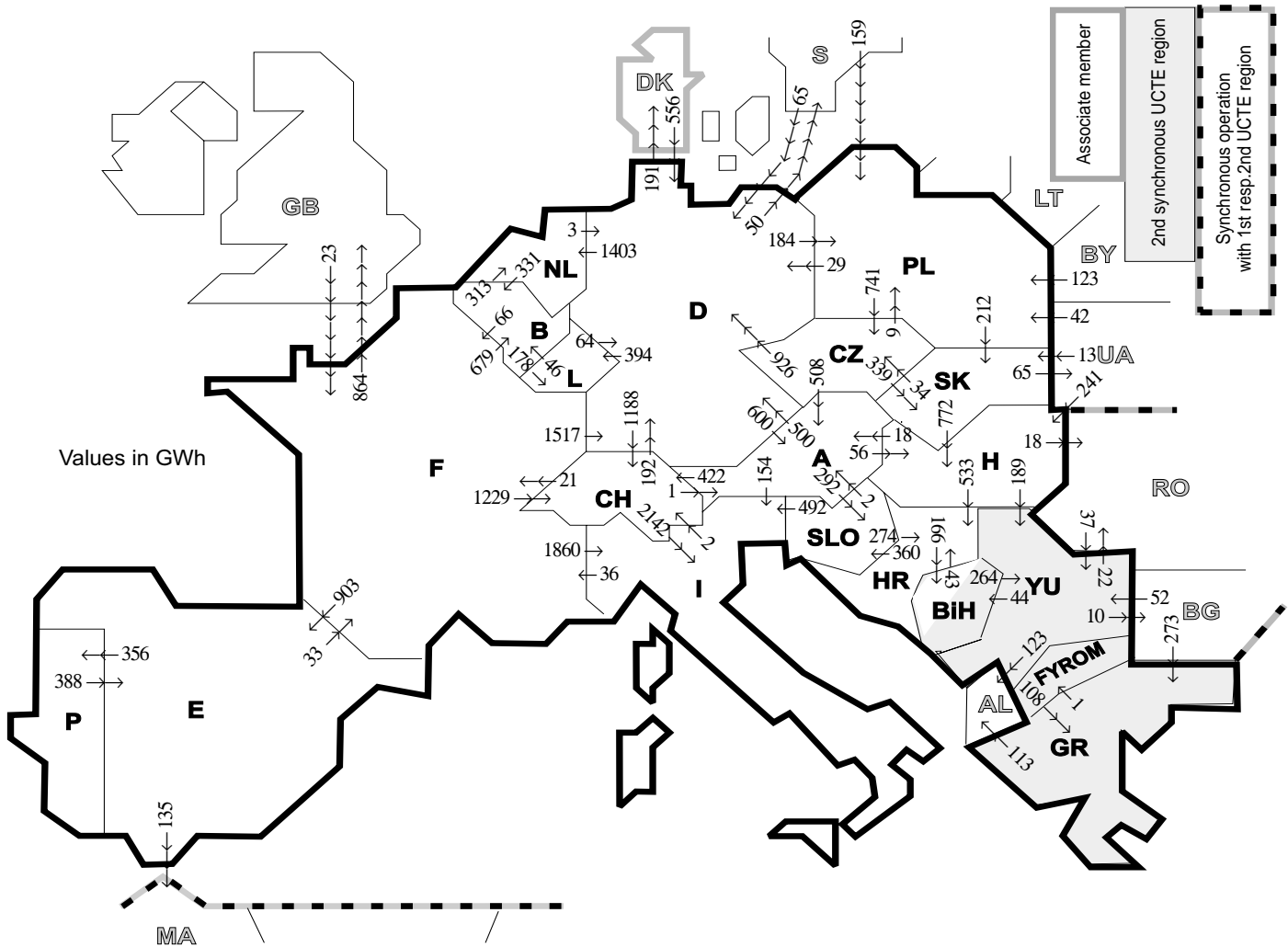
² Including deliveries from industry

³ Variation as compared to corresponding period of the previous year and representativity 100%

⁴ YU = FRY + FYROM (Federal Republic of Yugoslavia and Former Yugoslav Republic of Macedonia)

⁵ Without monthly values for Austria

⁶ The representativity of data referring to the whole country including the isolated systems of the Greek island is 91%. The representativity of data referring to the mainland interconnected system is 98%.



Exporting countries	Importing countries																				Σ Export
	B	D	E	F	GR	I	SLO	HR	BiH	YU	L	NL	A	P	CH	CZ	H	PL	SK	III ¹	
B	-	-	-	66	-	-	-	-	-	-	178	313	-	-	-	-	-	-	-	-	557
D	-	-	-	0	-	-	-	-	-	-	394	1403	600	-	1188	0	-	184	-	241	4010
E	-	-	-	33	-	-	-	-	-	-	-	-	-	356	-	-	-	-	-	-	524
F	679	1517	903	-	1860	-	-	-	-	-	-	-	-	-	1229	-	-	-	-	-	864
GR	-	-	-	-	0	-	-	-	-	1	-	-	-	-	-	-	-	-	-	-	114
I	-	-	-	36	0	0	-	-	-	-	-	-	0	-	2	-	-	-	-	-	38
SLO	-	-	-	-	-	492	-	274	-	-	-	-	2	-	-	-	-	-	-	-	768
HR	-	-	-	-	-	-	360	-	166	0	-	-	-	-	-	-	0	-	-	-	526
BiH	-	-	-	-	-	-	-	43	-	264	-	-	-	-	-	-	-	-	-	-	307
YU	-	-	-	-	108	-	-	0	44	-	-	-	-	-	-	-	0	-	-	155	307
L	46	64	-	-	-	-	-	-	-	-	-	-	-	-	-	-	-	-	-	-	110
NL	331	3	-	-	-	-	-	-	-	-	-	-	-	-	-	-	-	-	-	-	334
A	-	500	-	-	154	292	-	-	-	-	-	-	-	-	422	0	56	-	-	-	1424
P	-	-	388	-	-	-	-	-	-	-	-	-	-	-	-	-	-	-	-	-	388
CH	-	192	-	21	-	2142	-	-	-	-	1	-	-	-	-	-	-	-	-	-	2356
CZ	-	926	-	-	-	-	-	-	-	-	-	-	508	-	-	-	-	9	339	-	1782
H	-	-	-	-	-	-	533	-	189	-	-	-	18	-	-	-	-	-	0	18	758
PL	-	29	-	-	-	-	-	-	-	-	-	-	-	-	-	741	-	-	212	0	982
SK	-	-	-	-	-	-	-	-	-	-	-	-	-	-	-	34	772	0	-	65	871
III ¹	-	621	0	23	273	-	-	-	-	89	-	-	-	-	-	-	241	324	13	-	1584
Σ Import	1056	3852	1291	179	381	4648	652	850	210	543	572	1716	1129	356	2841	775	1069	517	564	1591	24792

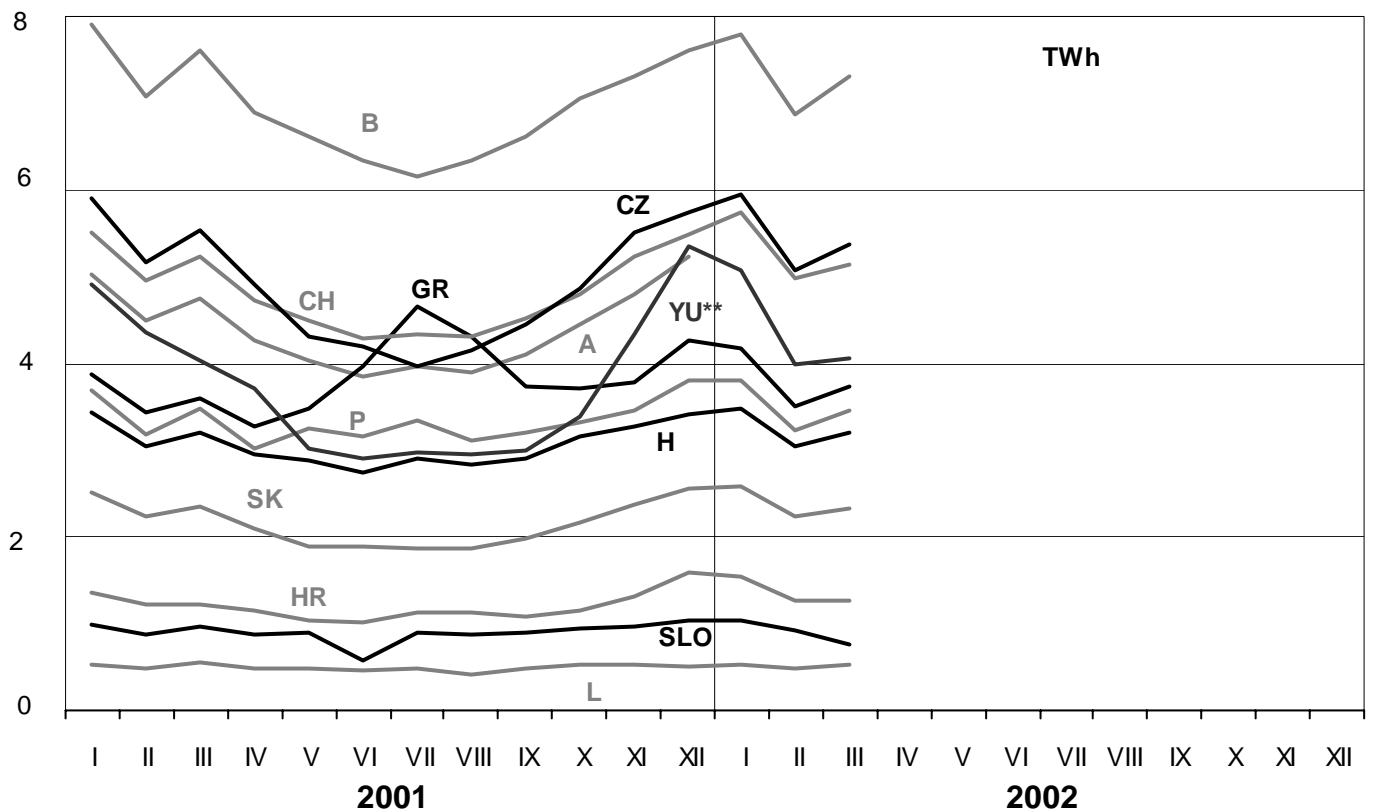
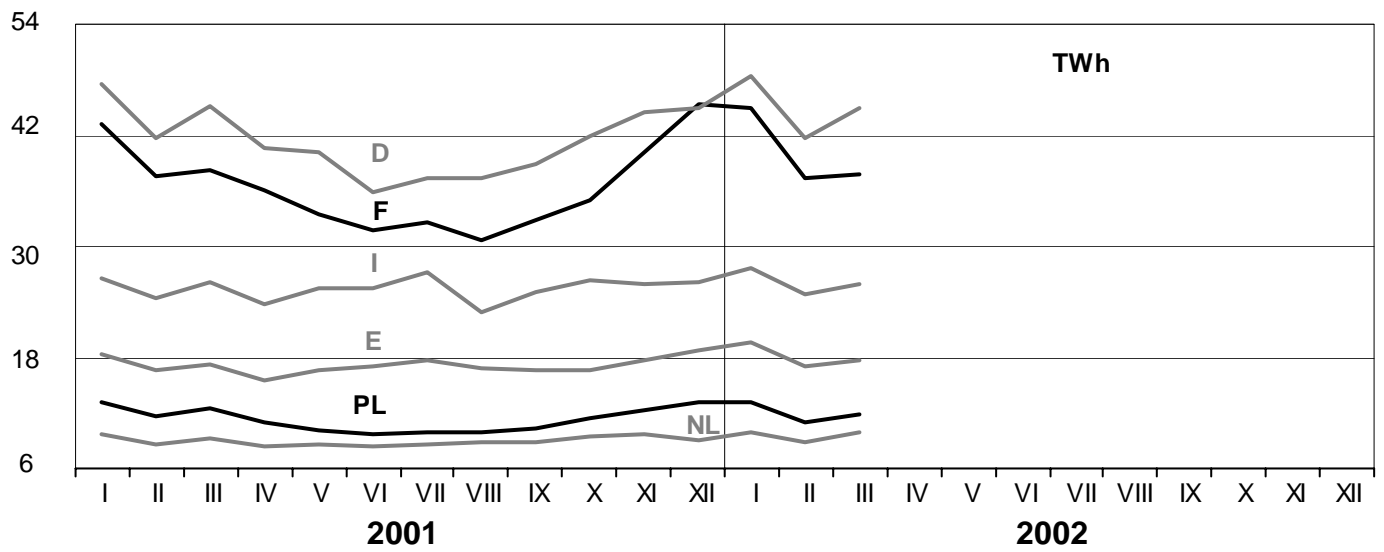
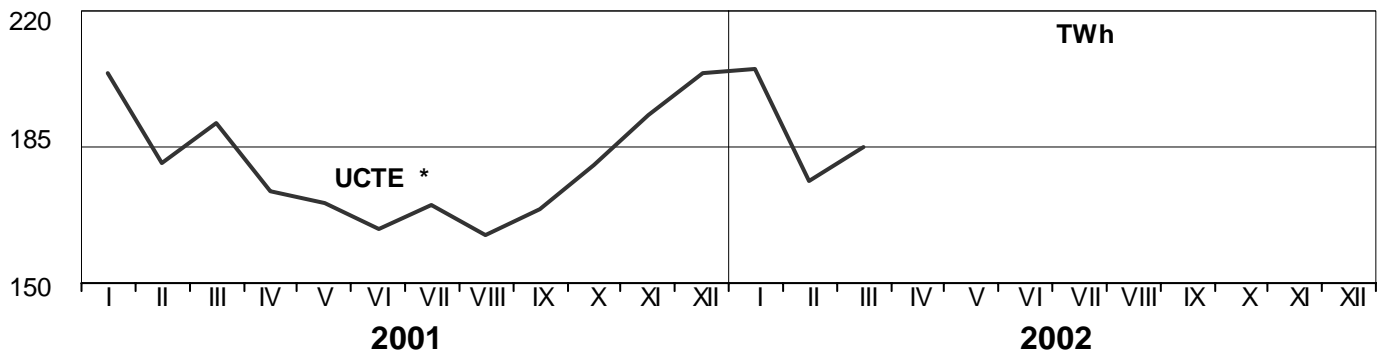
Sum of physical energy flows between UCTE countries = 21617 GWh ¹ III = Third countries
 Total physical energy flows = 24792 GWh

These physical energy flows were measured on the cross-frontier transmission lines (≥ 110 kV) listed in table 9 of the Statistical Yearbook. These values may differ from the official statistics and the exchange balances in chapter 1.

3

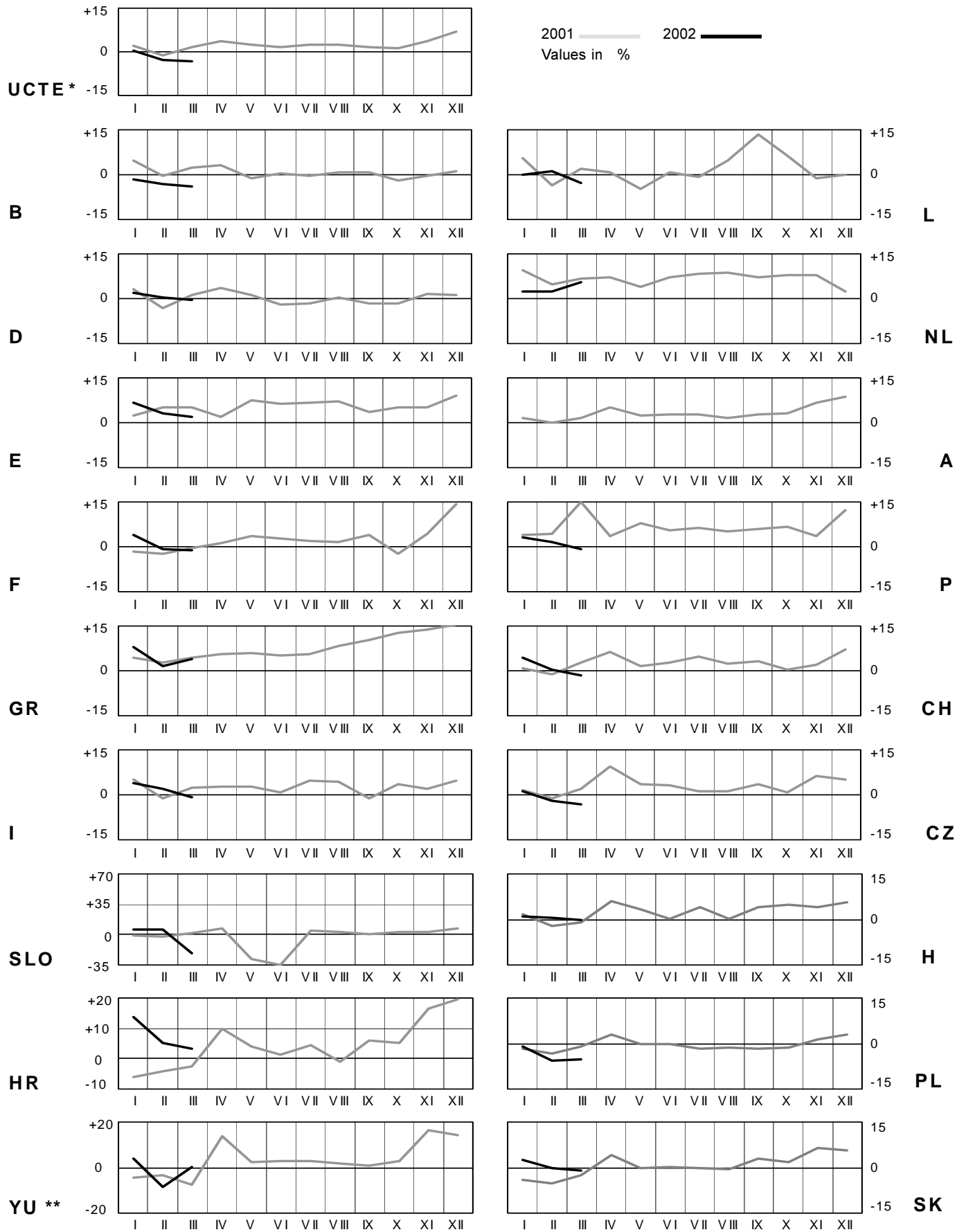
Monthly consumption

March 2002



* Without consumption values for Austria in the year 2002

** YU = FRY + FYROM (Federal Republic of Yugoslavia and Former Yugoslav Republic of Macedonia)



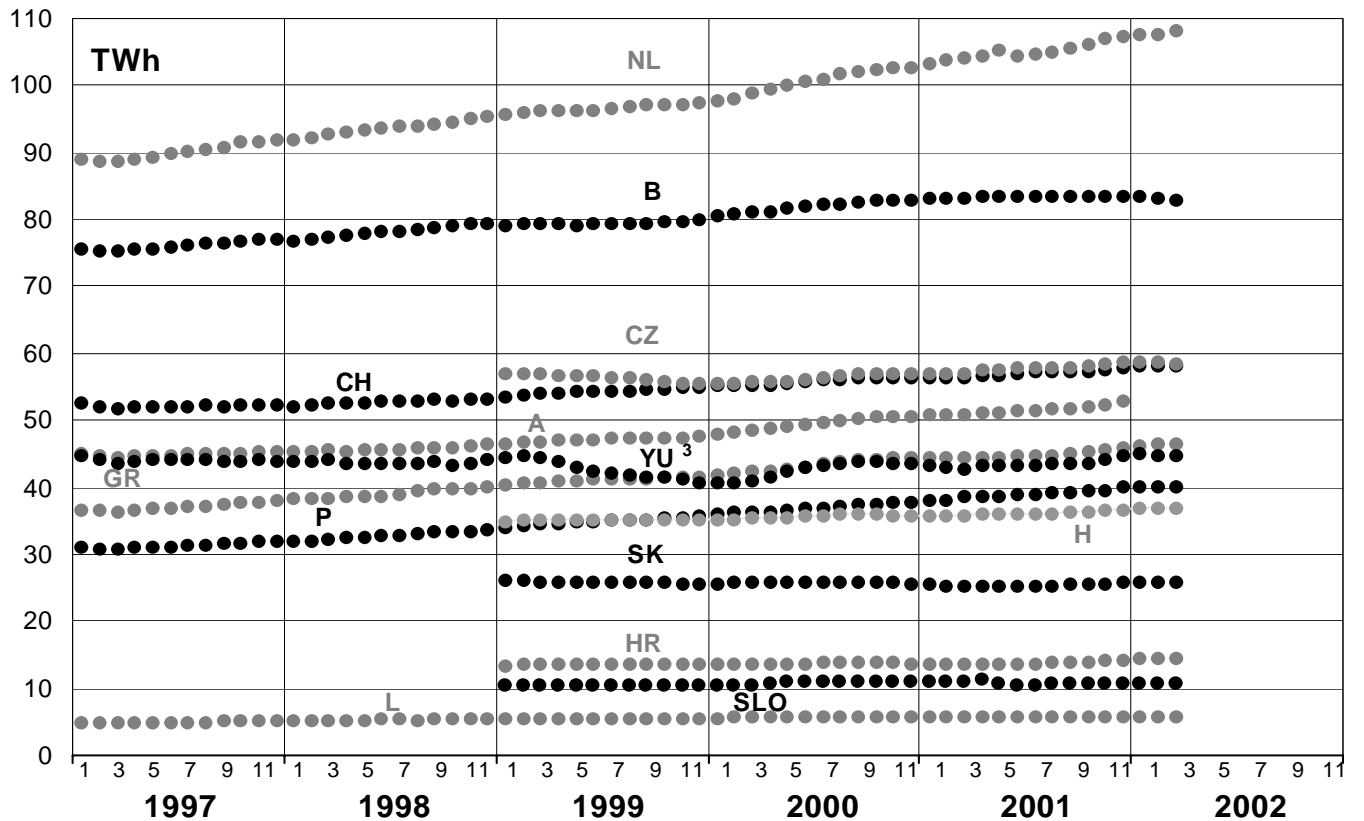
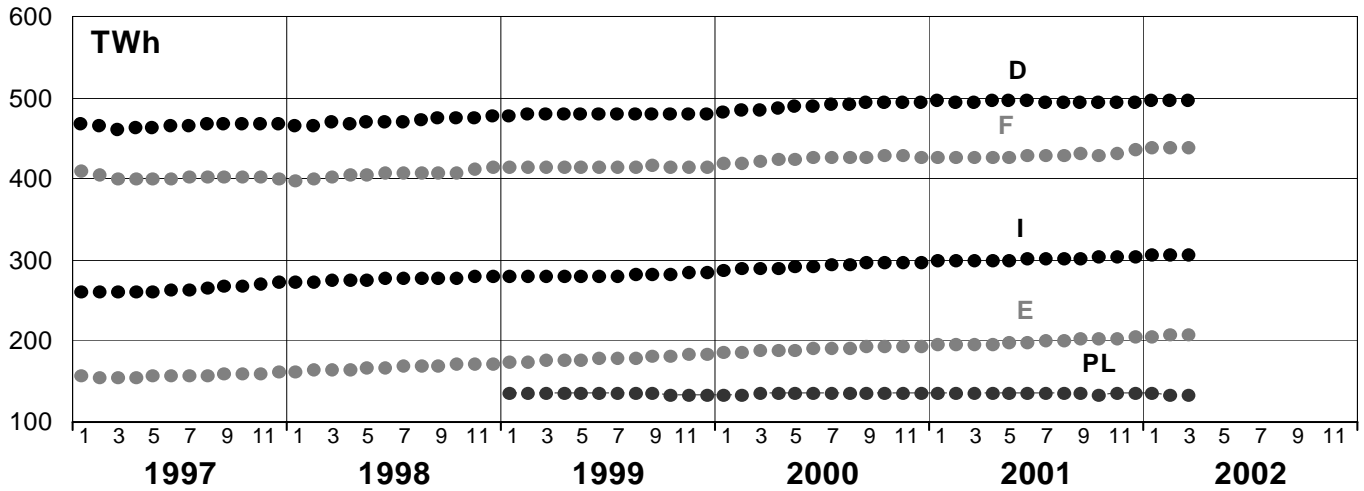
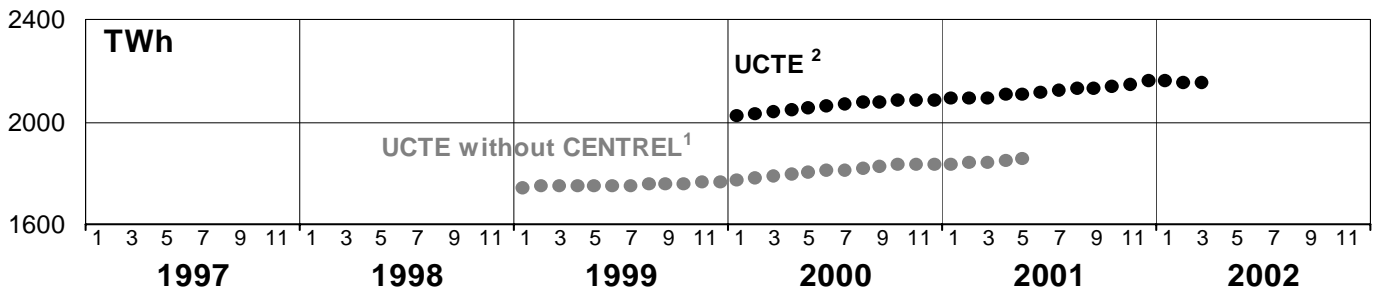
* Without consumption values for Austria in the year 2002

** YU = FRY + FYROM (Federal Republic of Yugoslavia and Former Yugoslav Republic of Macedonia)

5

Consumption of last 12 months

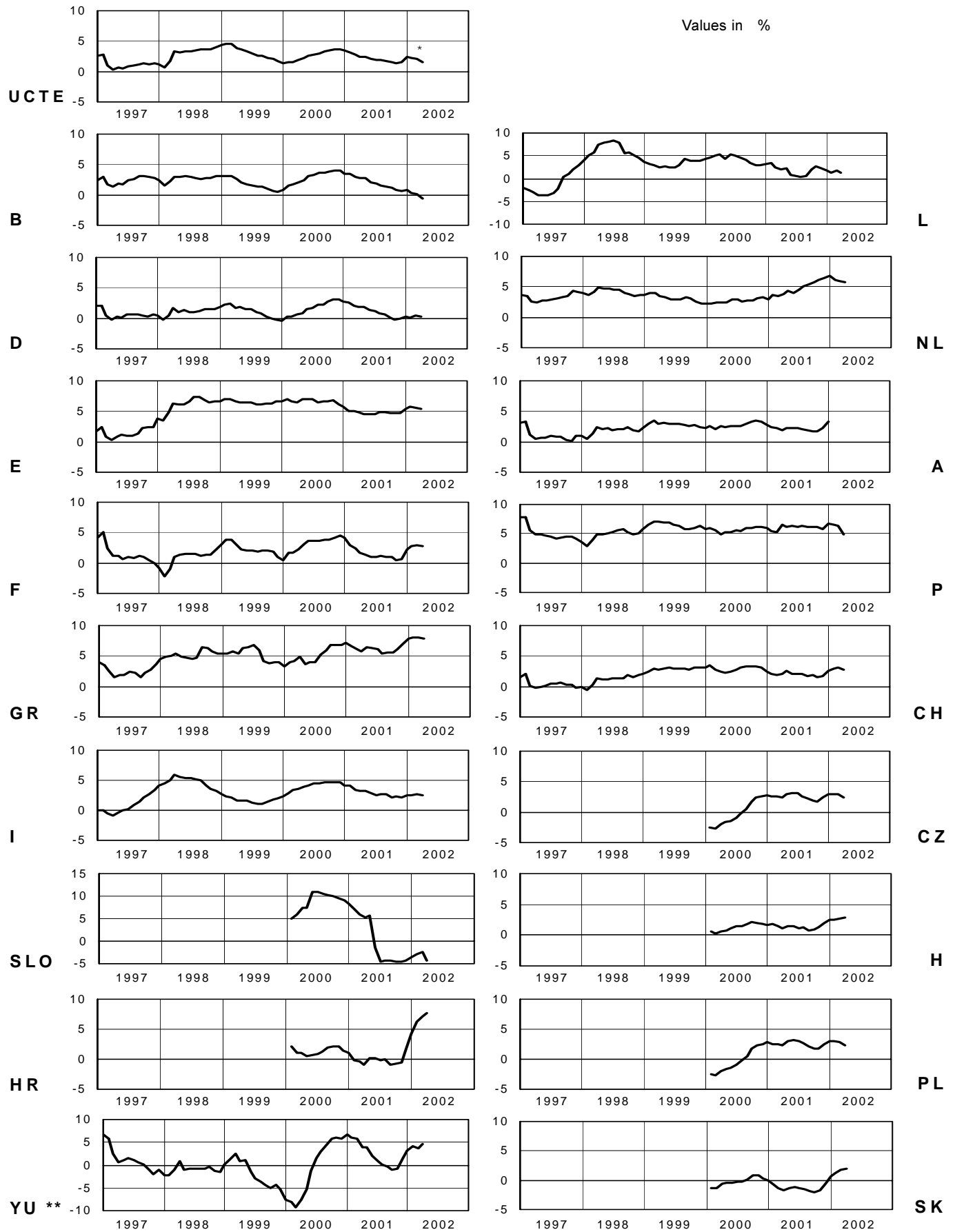
March 2002



¹ CENTREL countries CZ, H, PL, SK member of UCTE from May 2001

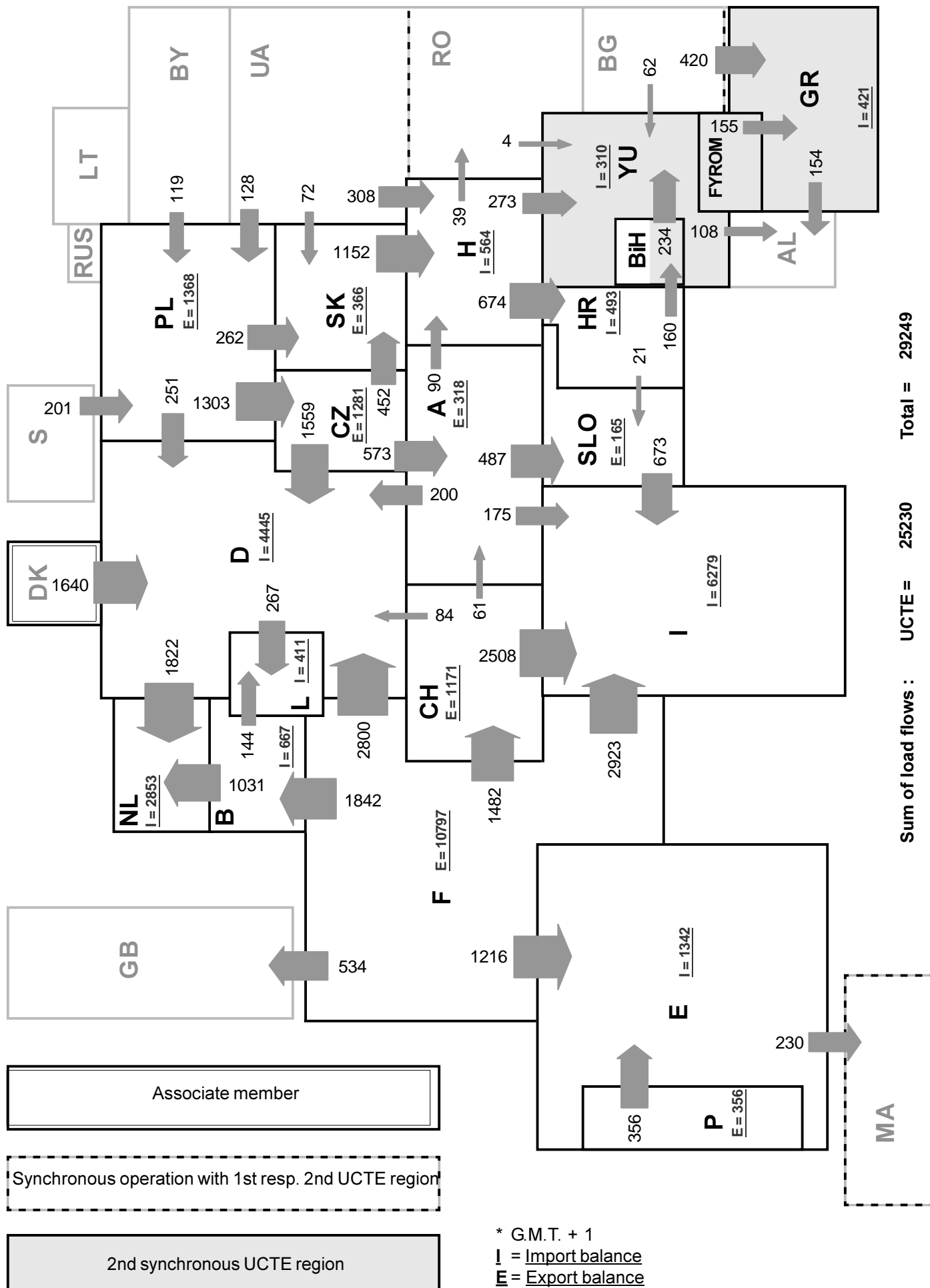
² Without consumption values for Austria in the year 2002

³ YU = FRY + FYROM (Federal Republic of Yugoslavia and Former Yugoslav Republic of Macedonia)

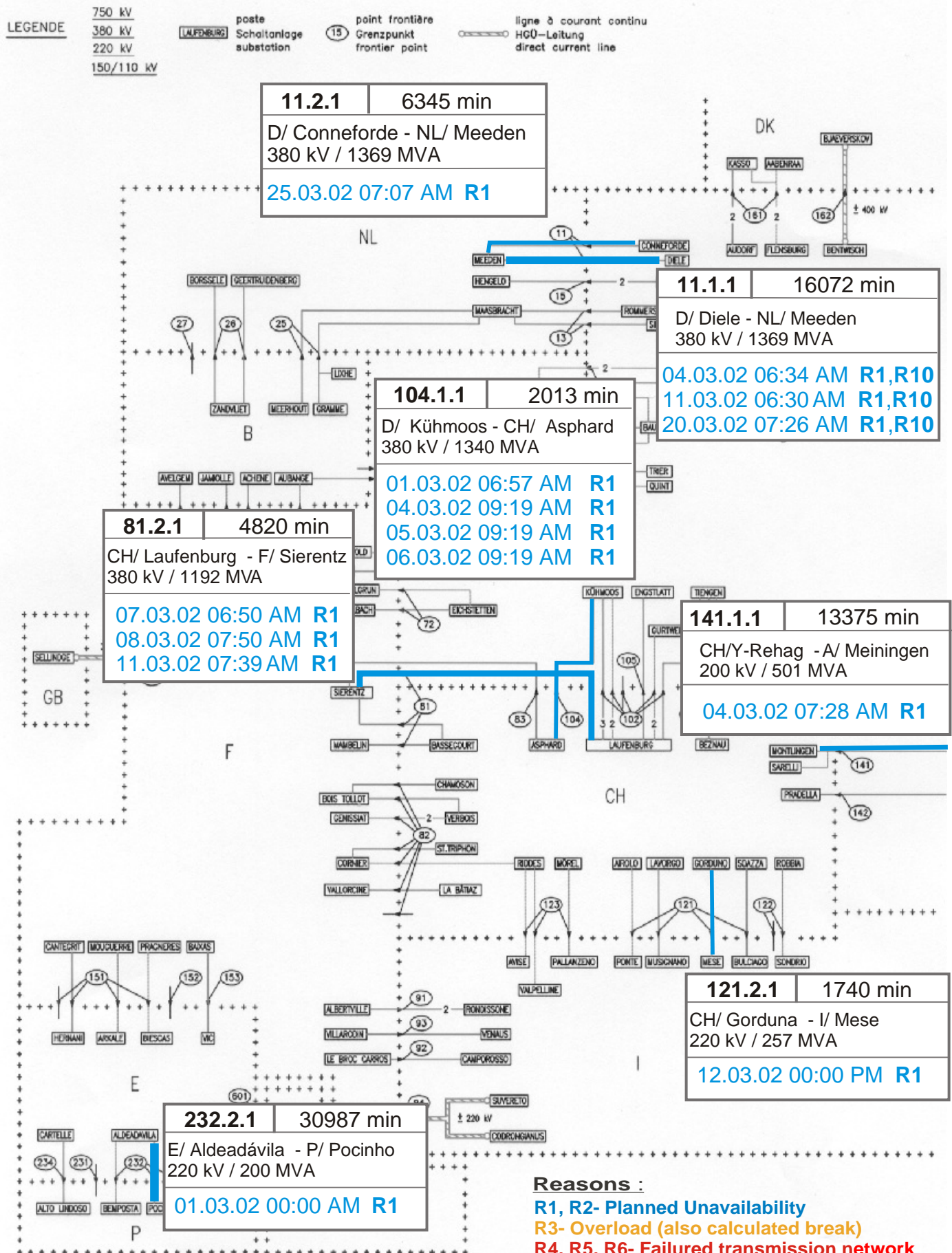


* Without consumption values for Austria in the year 2002

** YU = FRY + FYROM (Federal Republic of Yugoslavia and Former Yugoslav Republic of Macedonia)

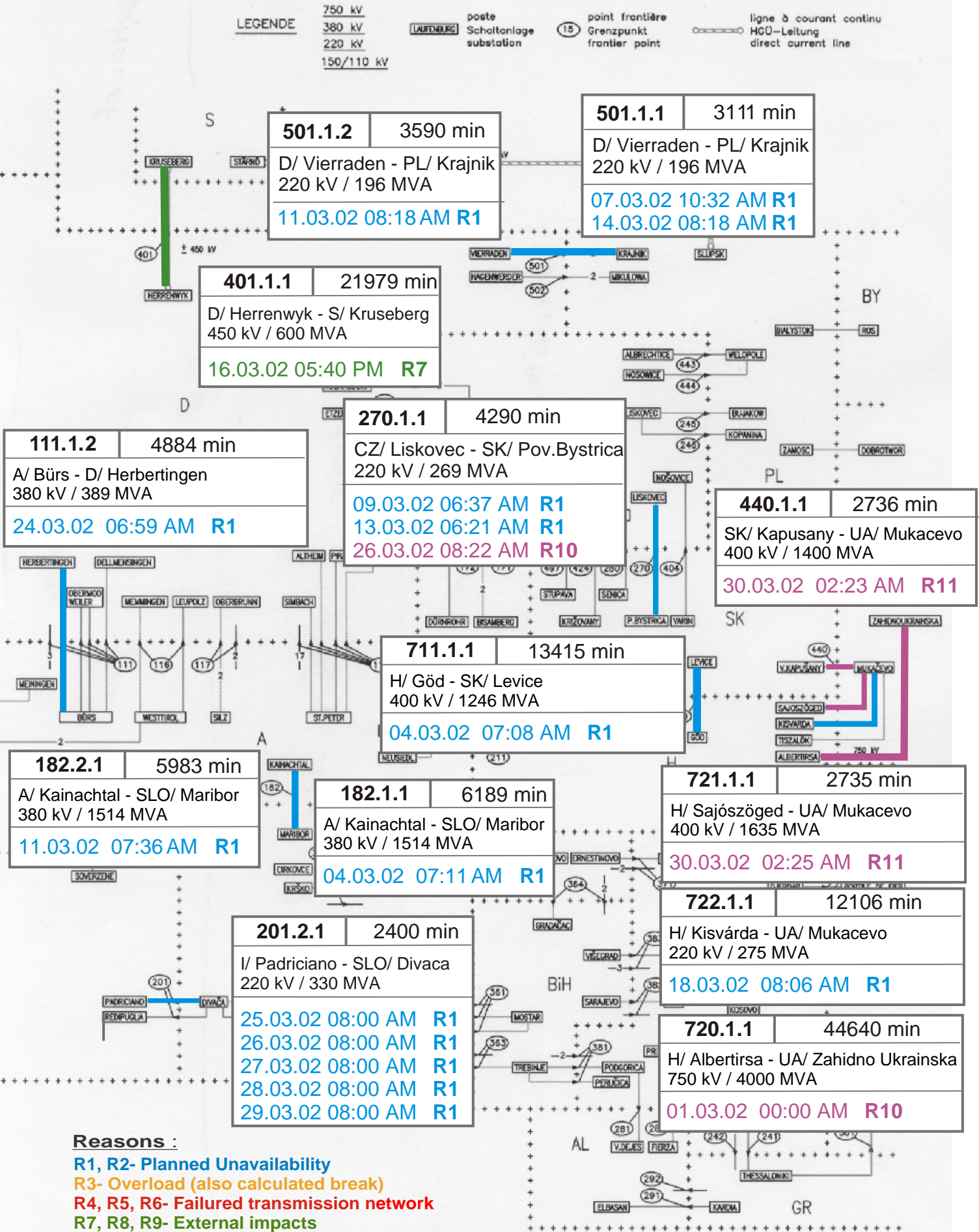


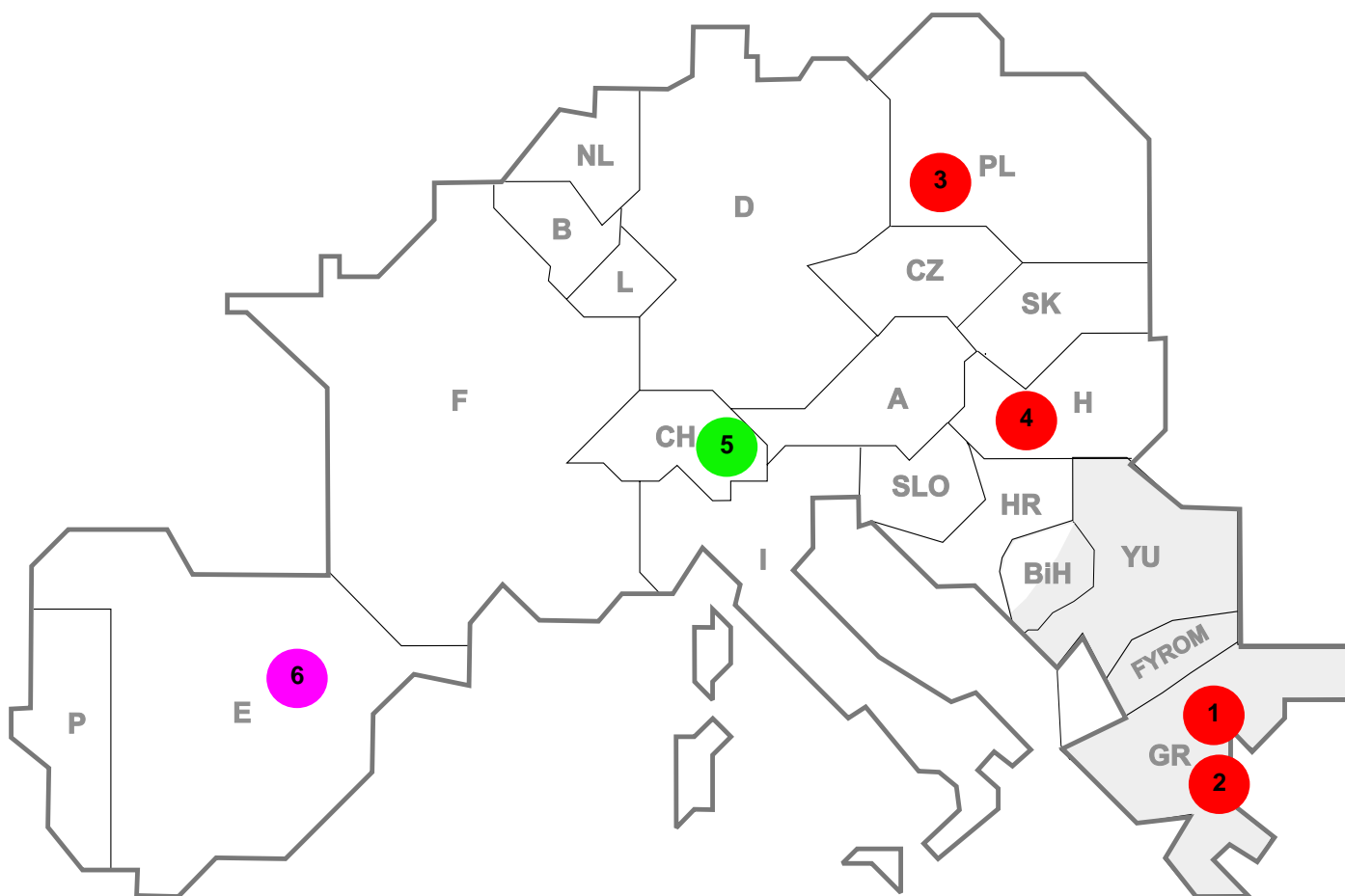
* G.M.T. + 1
 I = Import balance
 E = Export balance



Reasons :

- R1, R2- Planned Unavailability
- R3- Overload (also calculated break)
- R4, R5, R6- Failed transmission network
- R7, R8, R9- External impacts
- R10, R11- Other reasons





Reasons:

R3 Overload

R7, R8, R9 External impacts (animals...)

R4, R5, R6 Failure in the transmission network

R10, R11 Other reasons

nbr	Country	Substation	Reason	Energie not supplied [MWh]	Total loss of power [MW]	Restoration time [min]	Equivalent time of interruption ¹
1	GR	Ag.Demetrios	R5	900	900	30	10,14
2	GR	Ag.Demetrios	R6	900	900	30	10,14
3	PL	Starno	R6	340	600	102	2,36
4	H	Sajoszöged	R5	150	150	60	2,14
5	CH	Laufenburg	R8	0	44	27	0,40
6	E	Mudarra	R11	0	53	4	0,13

¹ (year [in min] * power loss) / consumption last 12 months

Control area	Prog_exp	Prog_imp	Prog_exp3	Prog_imp3	Prog_exp11	Prog_imp11
B	401352	1105375	642	1310	422	1344
D	2672177	2194312	2490	2660	2577	6296
E	211283	936902	167	1200	270	1539
F	8296319	1427739	11688	1676	11821	1178
GR	6700	235973	0	316	0	440
I	38476	4633576	0	6204	5	6284
SLO	n.a.	n.a.	n.a.	n.a.	n.a.	n.a.
HR	123699	447386	137	362	180	599
YU	346547	576693	635	721	590	888
NL	500021	1890926	792	2075	183	3077
A	817992	627213	620	1302	760	1961
P	133010	102095	0	44	500	158
CH	2030155	2424362	2928	4033	3881	2696
CZ	1616192	511386	2188	661	2185	714
H	610062	910615	584	1029	919	1434
PL	688253	200059	593	80	1571	329
SK	609960	297435	620	270	850	460

- Control areas can differ from national borders (i.e. German block which includes parts of A, L and DK).

- Values are calculated on an hourly base (MWh).

- This values are not the provisional values entered in the VULCANUS system, but the definitive values after an eventual correction during the actual date.

- Prog_exp: Sum of all positive values of every hour of every border

- Prog_imp: Sum of all negative values of every hour of every border

- Prog_exp3: Sum of all positive values the third Wednesday from 02:00 to 03:00 a.m.

- Prog_imp3: Sum of all negative values the third Wednesday from 02:00 to 03:00 a.m.

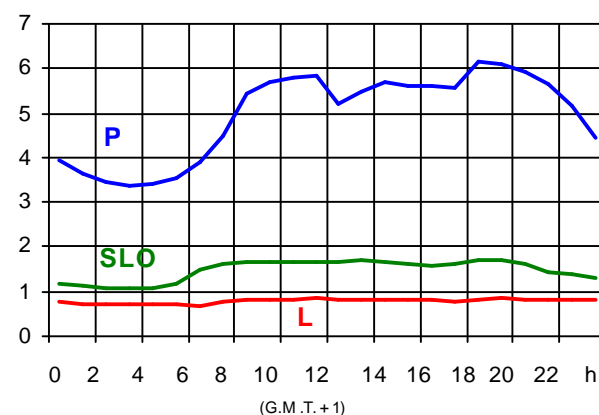
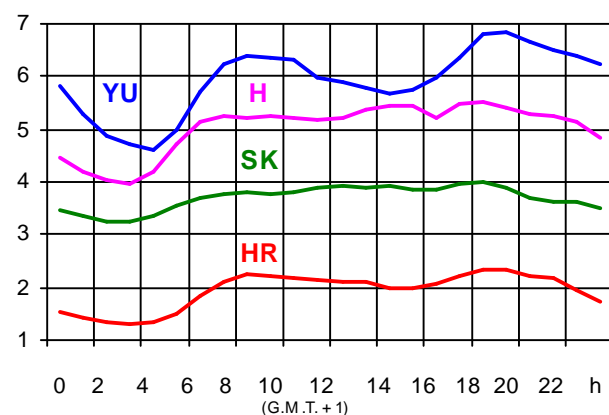
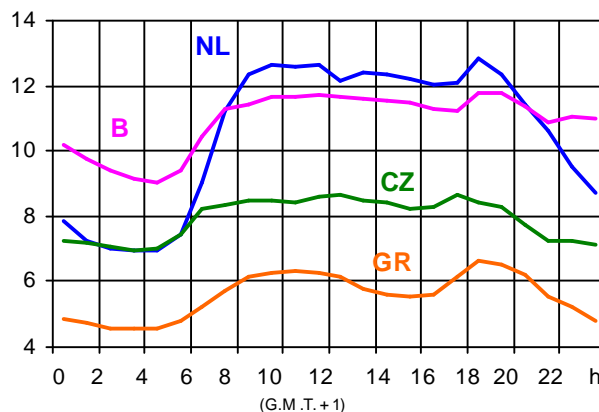
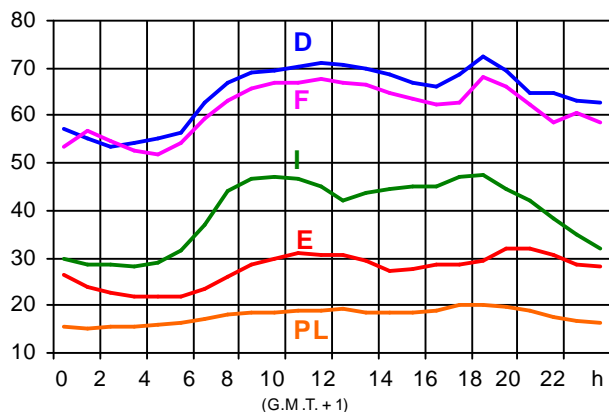
- Prog_exp11: Sum of all positive values the third Wednesday from 10:00 to 11:00 a.m.

- Prog_imp11: Sum of all negative values the third Wednesday from 10:00 to 11:00 a.m.

- YU = FRY + FYROM (Federal Republic of Yugoslavia and Former Yugoslav Republic of Macedonia)

Consumption hourly load curves¹ on 20.02.02

Values in GW



Peak load on 3rd Wednesday¹

20.02.02	B	D	E	F	GR	I	SLO	HR	YU ⁵	L	NL	A	P	CH	CZ	H	PL	SK	UCTE ⁷
MW	12087	72500	31905	68388	7279	47341	1717	2323	6847	855	12806	n.a.	6168	n.a.	8677	5536	20033	4000	304590
Δ % ²	-0,8	1,0	7,2	11,2	2,8	1,5	6,1	3,0	-9,6	-0,5	2,4	n.a.	7,8	n.a.	-5,7	-1,4	-2,7	0,7	3,5

Power produced in parallel operation³

20.02.02	B	D	E	F	GR	I	SLO	HR	YU ⁵	L	NL	A	P	CH	CZ	H	PL	SK	Others ⁴	UCTE ⁷
MW	10905	77600	30033	74278	5817	40414	1806	2187	5006	821	9781	n.a.	5562	n.a.	10869	4777	20691	4360	2430	304907

¹ Percentage as referred to total values in %

B	D	E	F	GR ⁶	I	SLO	HR	YU ⁵	L	NL	A	P	CH	CZ	H	PL	SK
100	91	94	97	91	100	95	100	96	99	90	n.a.	87	100	100	100	100	100

² Variation as compared to corresponding month of the previous year

³ Including autoproduction

⁴ Denmark (Jutland)

⁵ YU = FRY + FYROM (Federal Republic of Yugoslavia and Former Yugoslav Republic of Macedonia)

⁶ The representativity of data referring to the whole country including the isolated systems of the Greek island is 91%.

The representativity of data referring to the mainland interconnected system is 98%.

⁷ Without values for Austria and Switzerland

Existing lines with towers for lines with 2 circuits mounted

	B	D	E	F	GR	I	SLO	HR	JIEL	L	NL	A	P	CH	CZ	H	PL	SK	CX	
201	890	52	390	4751	228	443	1737	328	158	121	325	1728	140	18	694	828	312	734	381	373
238	421	128	4787	4283	18	443	134	807	155	115	3677	1819	175	82	522	10318	438	811	371	458

	F	I	SLO	HR	JIEL	L	NL	A	P	CH	CZ	H	PL	SK
B	2/2					2/-	-/4							
D	2/4					8/-	-/8	9/3		5/7	5/4			
E	2/2								3/2					
	F	3/3								5/5				
	GR	-/1			-/1									
		I	1/1					1/-		6/2				
			SLO	2/3				1/2						
				HR	7/3									
									JIEL					
									A	1/2	2/1	2/1		
											CZ	2/2	2/3	
											H		2/2	
											PL		2/2	



Contact

Boulevard Saint-Michel, 15
 B-1040 Brussels – Belgium
 Tel +32 2 741 69 40 – Fax +32 2 741 69 49

info@ucte.org
 www.ucte.org