



February 2002

Table of contents		Page
1	Electricity supply situation of the countries	2
2	Physical energy flows	3
3	Monthly consumption	4
4	Monthly consumption variation	5
5	Consumption of last 12 months	6
6	Variation of the last 12 months' consumption	7
7	Load flows (night)	8
8	Load flows (day)	9
9	Unavailability of international tie lines (major events)	10
10	Network reliability (major events)	12
11	Scheduled exchanges	13
12	Load on the 3 rd Wednesday	14

1

Electricity supply situation of the countries

February 2002

Countries	B	D	E	F	GR	I	SLO	HR	YU ⁴	L	NL	A	P	CH	CZ	H	PL	SK	UCTE ⁵
Net production in GWh¹																			
Hy	132	1812	1593	3872	190	2500	113	428	944	81	0	na.	532	1915	297	2	391	506	15308
Tn	3806	13213	4775	34360	-	-	416	0	0	0	304	na.	0	2143	1436	1179	0	1356	62988
Tc	2429	28107	10511	5229	3171	19031	461	458	2689	234	7232	na.	2733	234	4326	1639	11425	745	100654
Total	6367 ²	43132 ²	16879 ²	43461	3361 ²	21531	990	886 ²	3633	315	7536 ²	na.	3265 ²	4292 ²	6059 ²	2820 ²	11816 ²	2607 ²	178950
Exchange balance in GWh																			
Imp. = +	616	-914	649	-5540	233	4146	-68	393	465	268	1281	na.	24	770	-967	229	-599	-337	649
Exp. = -																			
Consumption of pumps in GWh																			
	122	482	506	646	94	867	0	1	105	88	0	na.	64	85	25	0	171	31	3287
Consumption in GWh¹																			
monthly	6861	41736	17022	37275	3500	24810	922	1278	3993	495	8817	na.	3225	4977	5067	3049	11046	2239	176312
Δ ³ [%]	-3,1	0,3	3,2	-0,9	1,6	1,9	5,9	5,0	-8,4	1,2	2,5	na.	1,3	0,4	-2,1	0,5	-5,8	0,0	3,2
last 12 months	83215	496386	207254	438331	46441	306732	10905	14651	44739	5944	107748	na.	40185	58156	58641	36834	134417	25871	2159762
Δ ³ [%]	0,0	0,5	5,7	2,9	8,0	2,7	-2,3	7,1	3,7	1,7	4,0	na.	6,3	3,2	2,9	2,7	-0,6	1,7	2,1
Energy capability factor																			
	-	1,31	-	-	0,31	0,63	0,95	1,31	1,03	-	-	na.	0,40	1,02	-	-	-	1,73	0,8

¹ Percentage as referred to total values in %

Countries	B	D	E	F	GR ⁶	I	SLO	HR	YU	L	NL	A	P	CH	CZ	H	PL	SK
Production	100	93	94	97	91	100	95	100	96	98	100	n.a.	91	100	100	100	100	100
Consumption	100	93	94	97	91	100	95	100	96	99	100	n.a.	91	100	100	100	100	100

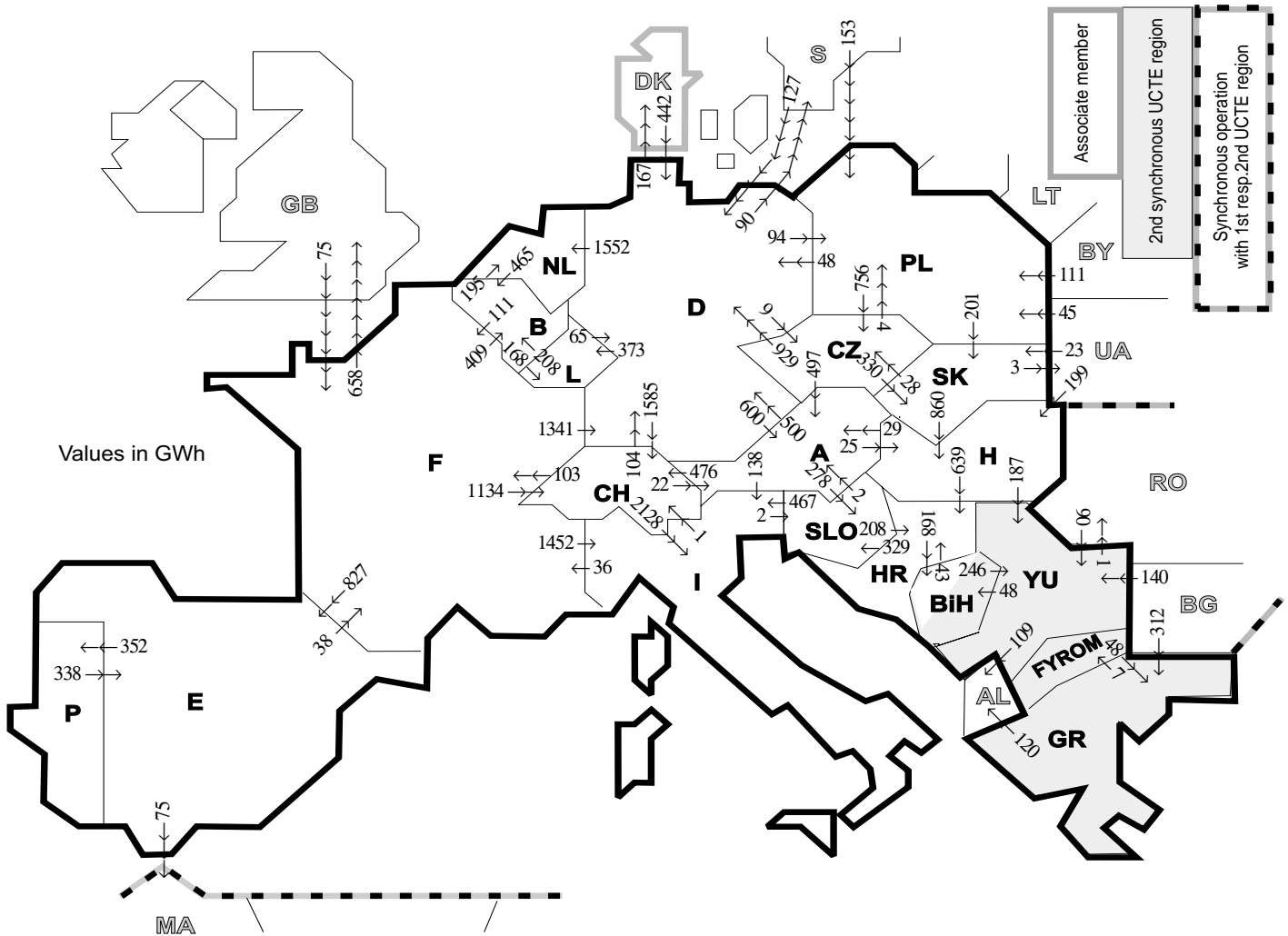
² Including deliveries from industry

³ Variation as compared to corresponding period of the previous year and representativity 100%

⁴ YU = FRY + FYROM (Federal Republic of Yugoslavia and Former Yugoslav Republic of Macedonia)

⁵ Without monthly values for Austria

⁶ The representativity of data referring to the whole country including the isolated systems of the Greek island is 91%. The representativity of data referring to the mainland interconnected system is 98%.



Exporting countries	Importing countries																				Σ Export	
	B	D	E	F	GR	I	SLO	HR	BiH	YU	L	NL	A	P	CH	CZ	H	PL	SK	III ¹		
B	-	-	-	111	-	-	-	-	-	-	168	195	-	-	-	-	-	-	-	-	-	474
D	-	-	-	0	-	-	-	-	-	-	373	1552	600	-	1585	9	-	94	-	257	-	4470
E	-	-	-	38	-	-	-	-	-	-	-	-	-	352	-	-	-	-	-	-	75	465
F	409	1341	827	-	1452	-	-	-	-	-	-	-	-	-	1134	-	-	-	-	-	658	5821
GR	-	-	-	-	0	-	-	-	-	7	-	-	-	-	-	-	-	-	-	-	120	127
I	-	-	-	36	0	-	2	-	-	-	-	-	0	-	1	-	-	-	-	-	-	39
SLO	-	-	-	-	-	467	-	208	-	-	-	-	2	-	-	-	-	-	-	-	-	677
HR	-	-	-	-	-	-	329	-	168	0	-	-	-	-	-	-	0	-	-	-	-	497
BiH	-	-	-	-	-	-	-	43	-	246	-	-	-	-	-	-	-	-	-	-	-	289
YU	-	-	-	-	48	-	-	0	48	-	-	-	-	-	-	-	0	-	-	-	110	206
L	208	65	-	-	-	-	-	-	-	-	-	-	-	-	-	-	-	-	-	-	-	273
NL	465	0	-	-	-	-	-	-	-	-	-	-	-	-	-	-	-	-	-	-	-	465
A	-	500	-	-	138	278	-	-	-	-	-	-	-	-	476	0	25	-	-	-	-	1417
P	-	-	338	-	-	-	-	-	-	-	-	-	-	-	-	-	-	-	-	-	-	338
CH	-	104	-	103	-	2128	-	-	-	-	22	-	-	-	-	-	-	-	-	-	-	2357
CZ	-	929	-	-	-	-	-	-	-	-	-	-	497	-	-	-	-	4	330	-	-	1760
H	-	-	-	-	-	-	639	-	187	-	-	-	29	-	-	-	-	-	0	0	-	855
PL	-	48	-	-	-	-	-	-	-	-	-	-	-	-	-	756	-	-	201	0	-	1005
SK	-	-	-	-	-	-	-	-	-	-	-	-	-	-	-	860	0	-	-	3	-	891
III ¹	-	569	0	75	312	-	-	-	-	230	-	-	-	-	-	-	199	309	23	-	-	1717
Σ Import	1082	3556	1165	363	360	4185	609	890	216	670	541	1747	1150	352	3196	793	1084	407	554	1223	-	24143

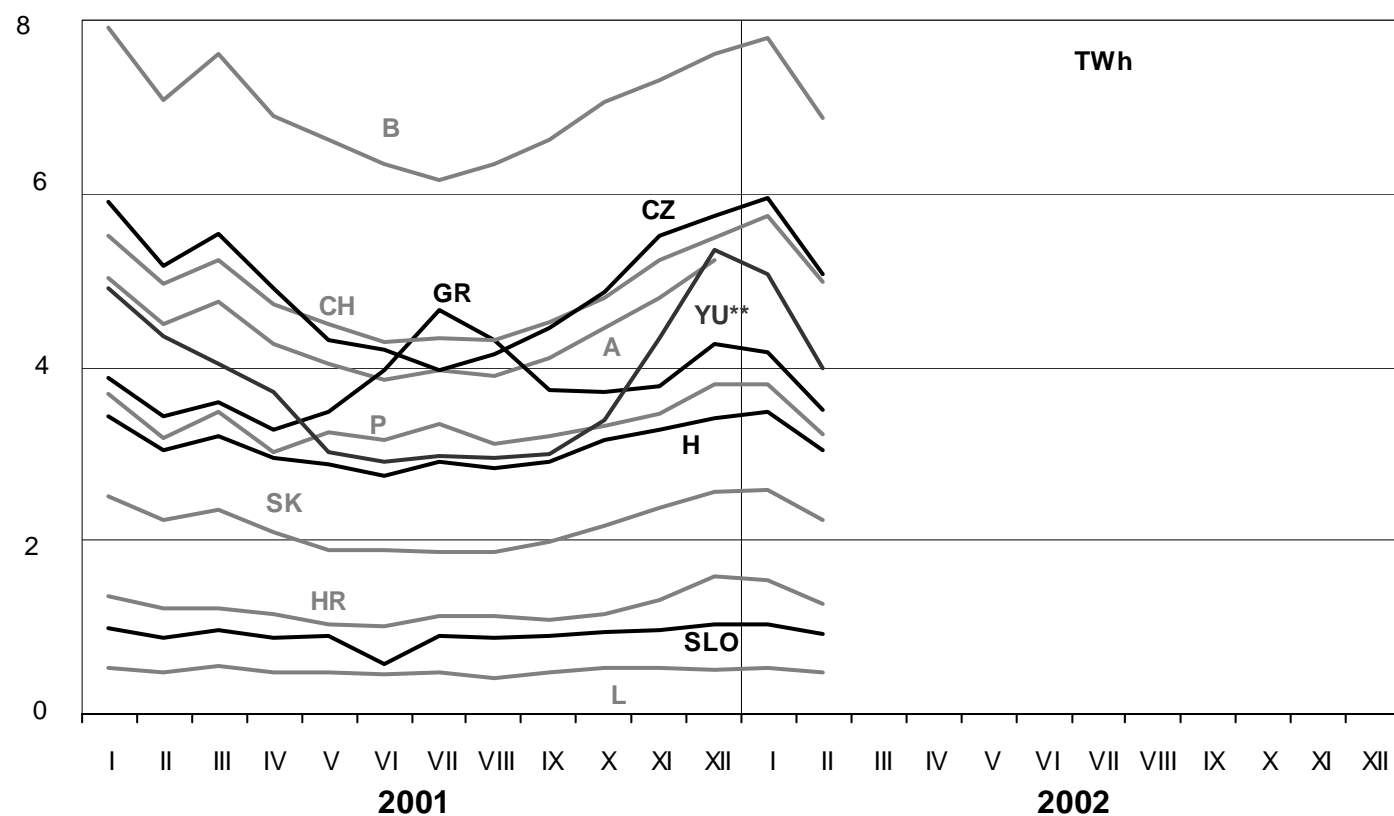
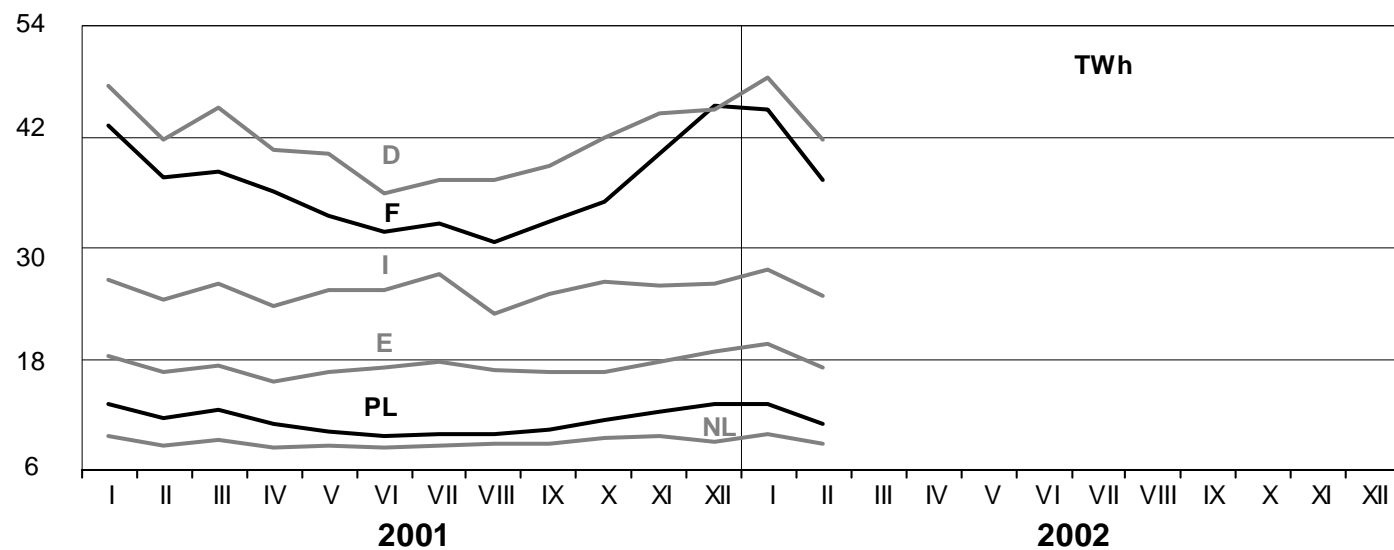
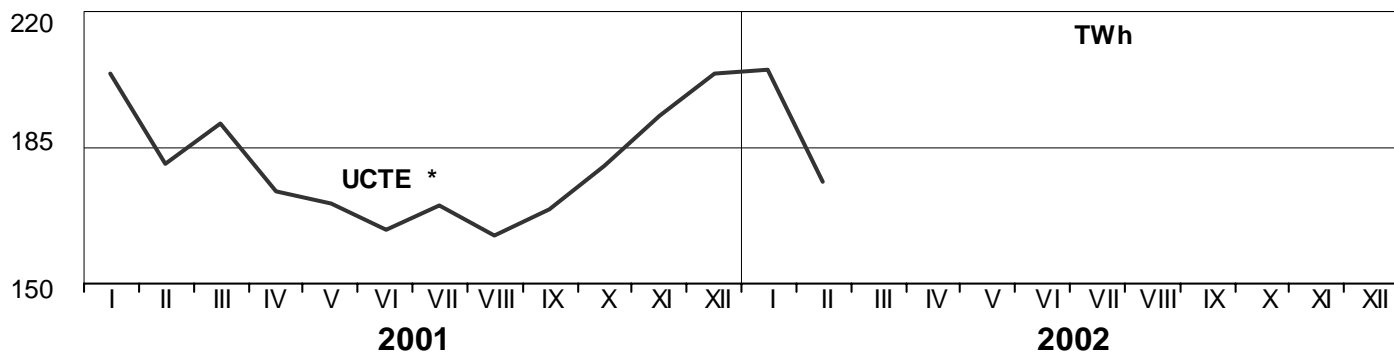
Sum of physical energy flows between UCTE countries = 21203 GWh ¹ III = Third countries
 Total physical energy flows = 24143 GWh

These physical energy flows were measured on the cross-frontier transmission lines (≥ 110 kV) listed in table 9 of the Statistical Yearbook. These values may differ from the official statistics and the exchange balances in chapter 1.

3

Monthly consumption

February 2002



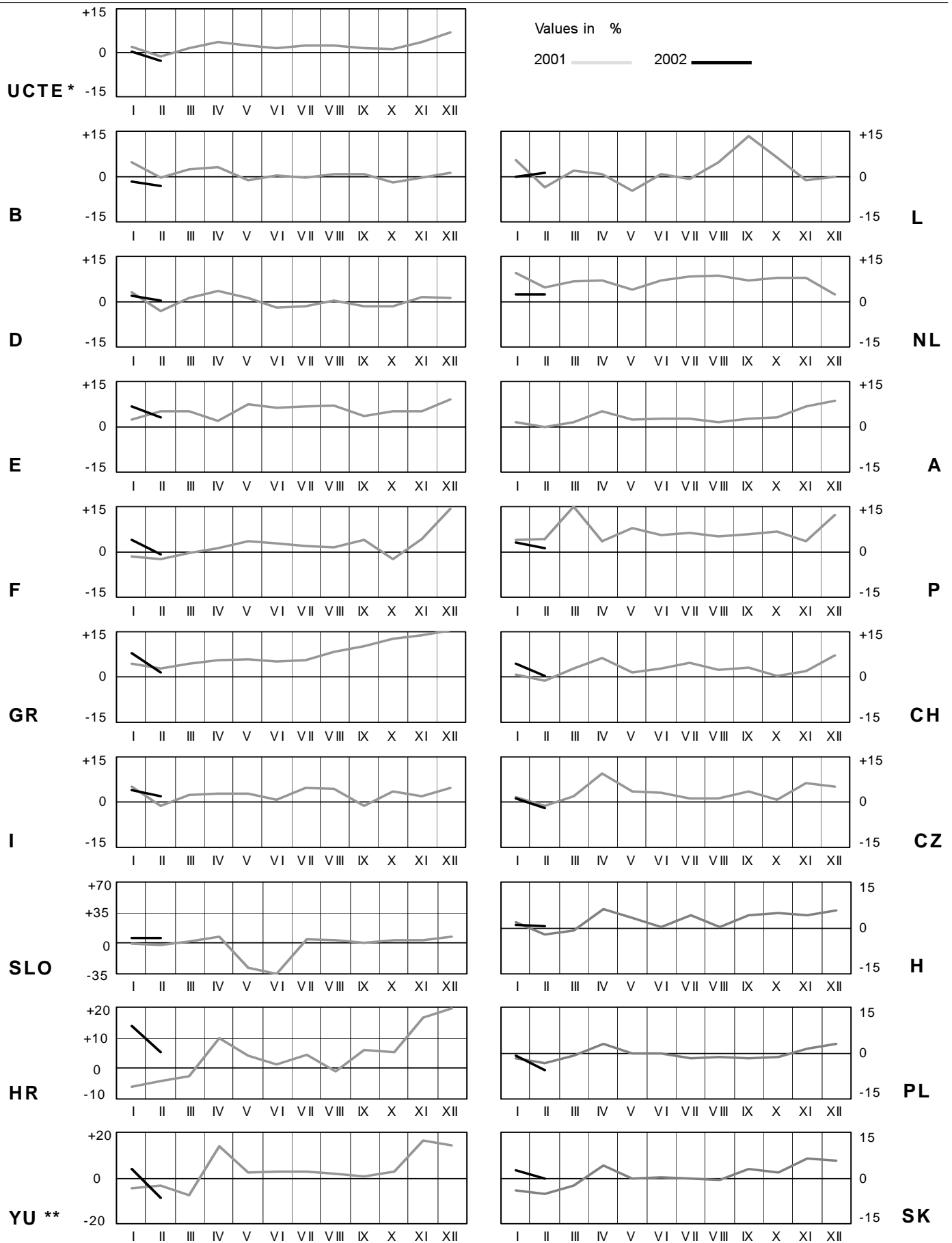
* Without consumption values for Austria in January and February 2002

** YU = FRY + FYROM (Federal Republic of Yugoslavia and Former Yugoslav Republic of Macedonia)

4

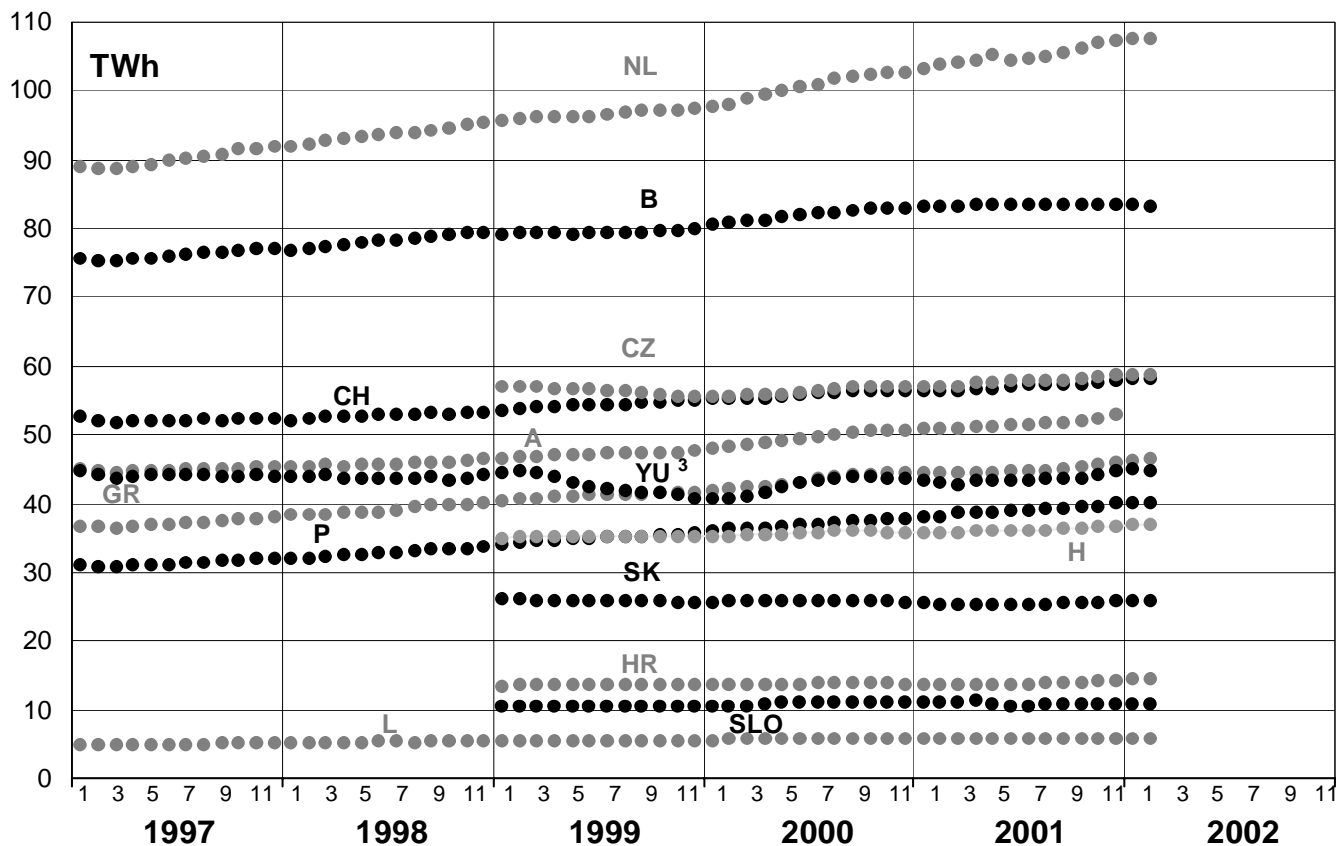
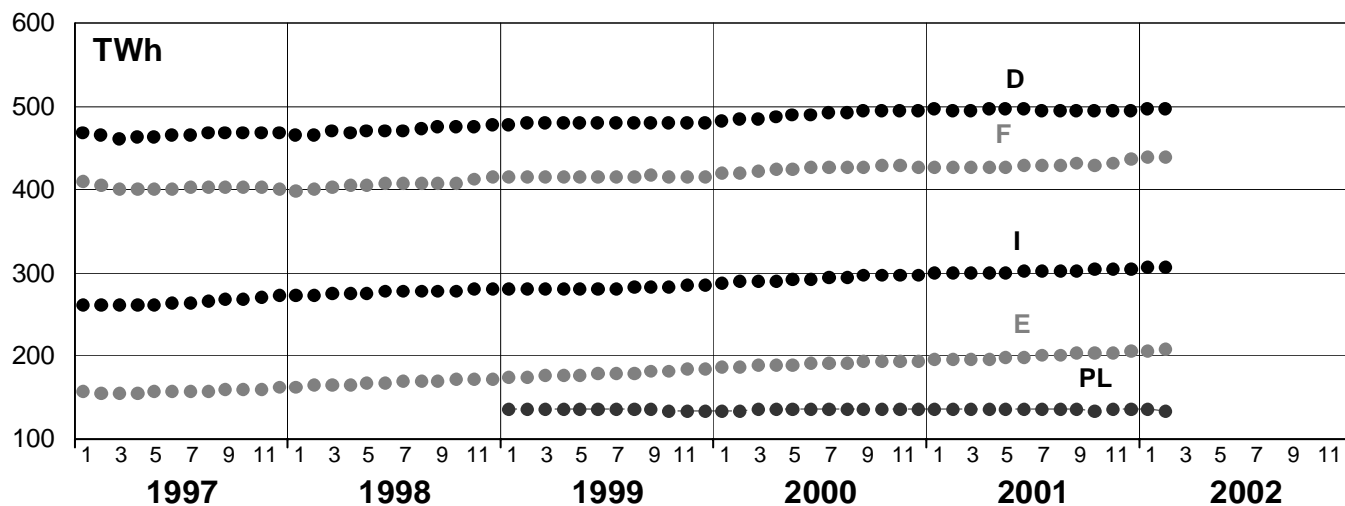
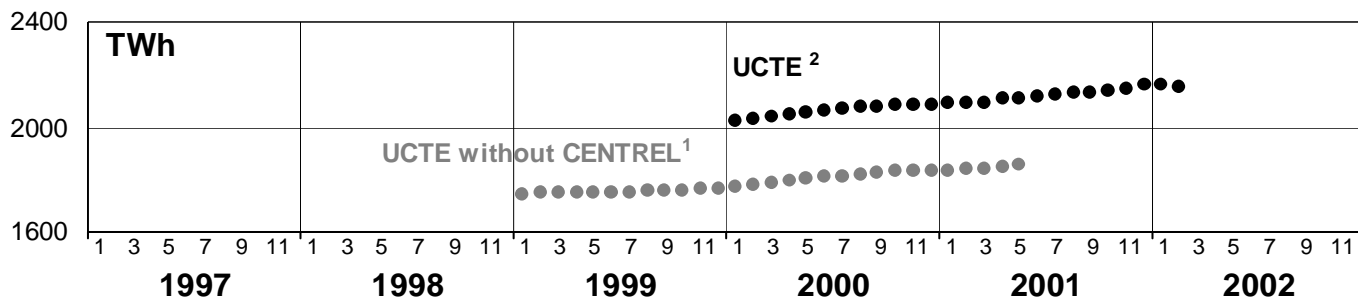
Monthly consumption variation

February 2002



* Without consumption values for Austria in January and February 2002

** YU = FRY + FYROM (Federal Republic of Yugoslavia and Former Yugoslav Republic of Macedonia)



¹ CENTREL countries CZ, H, PL, SK member of UCTE from May 2001

² Without consumption values for Austria in January and February 2002

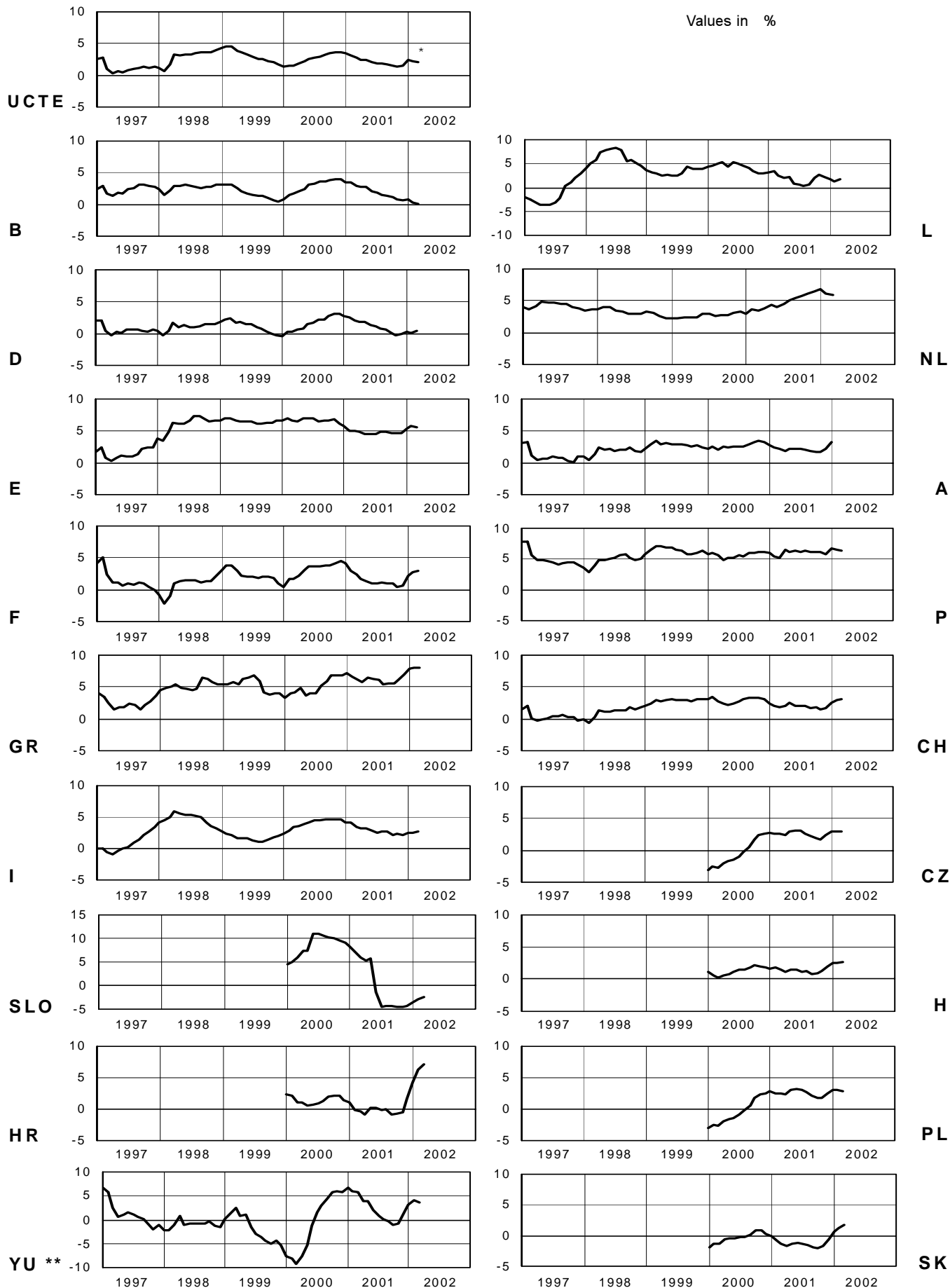
³ YU = FRY + FYROM (Federal Republic of Yugoslavia and Former Yugoslav Republic of Macedonia)

6

Variation of the last 12 months' consumption

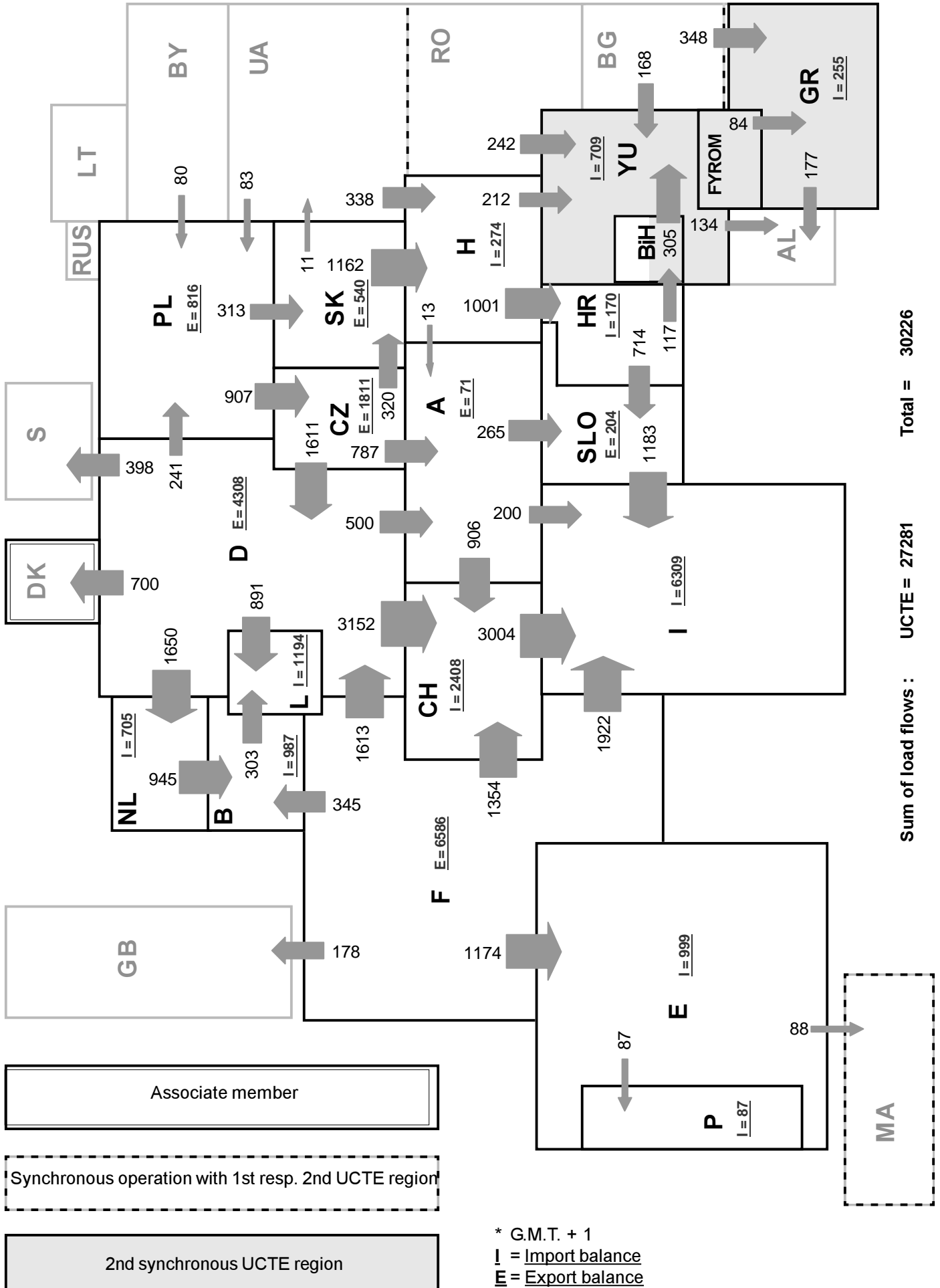
February 2002

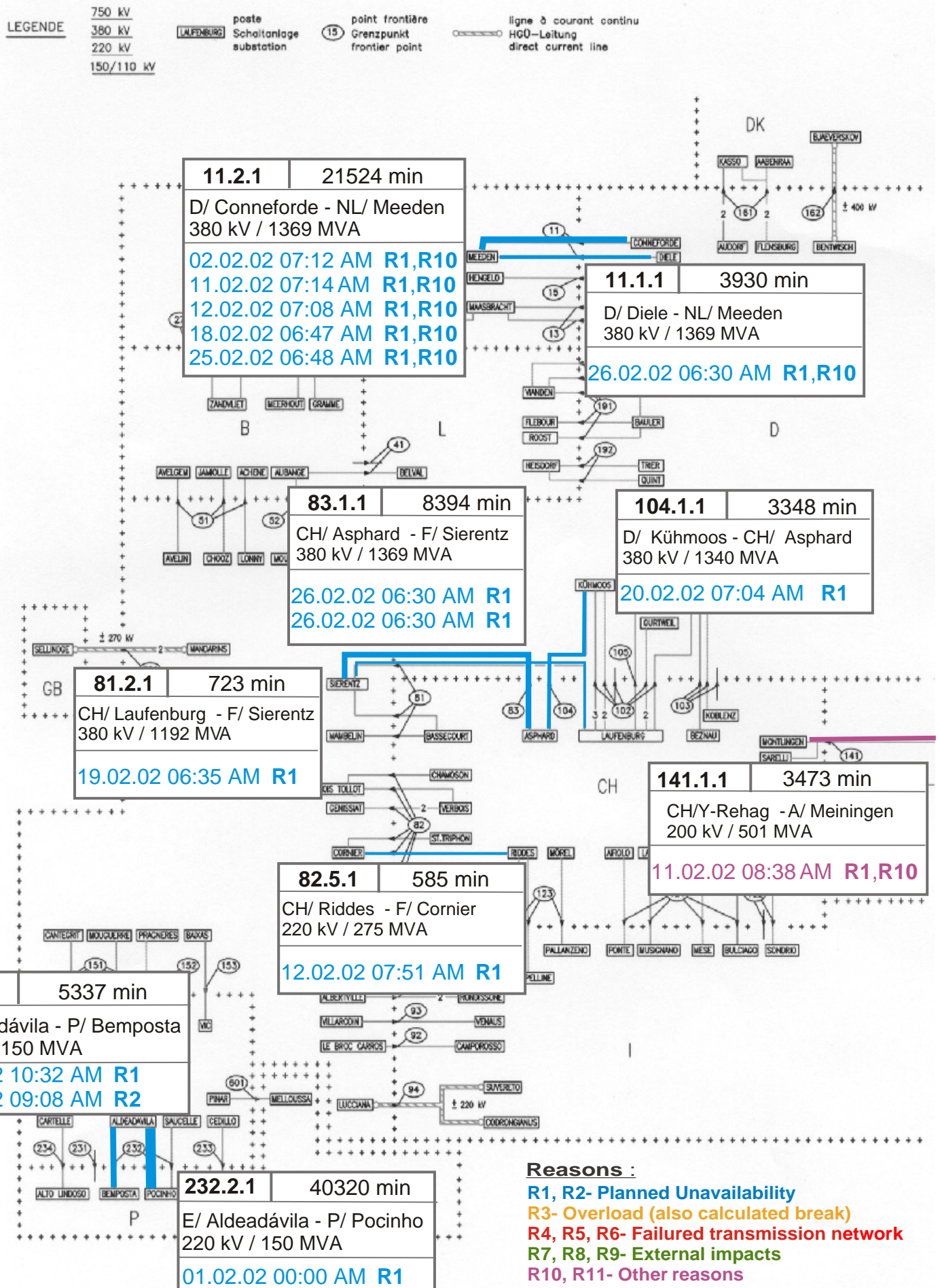
Values in %

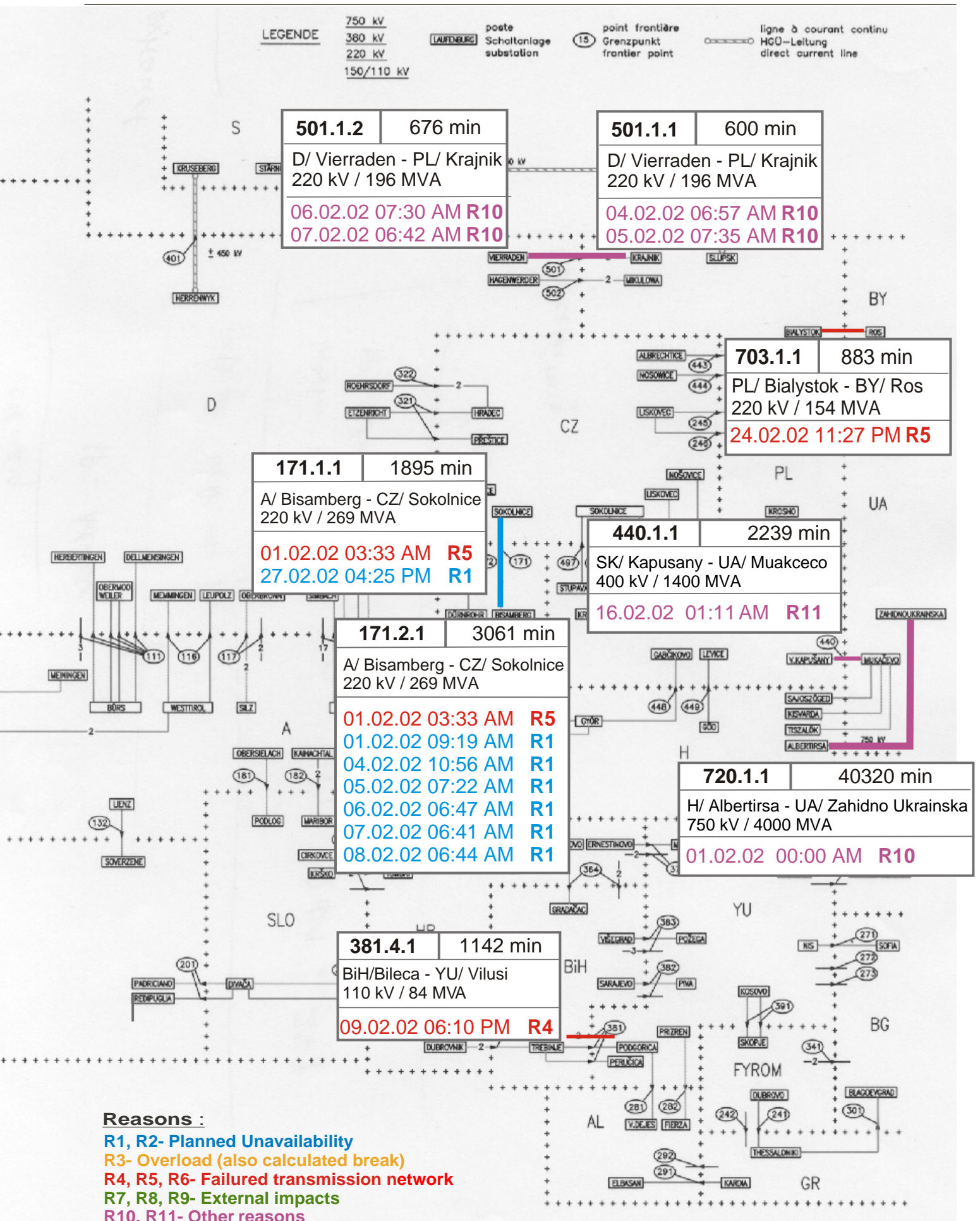


* Without consumption values for Austria in January and February 2002

** YU = FRY + FYROM (Federal Republic of Yugoslavia and Former Yugoslav Republic of Macedonia)

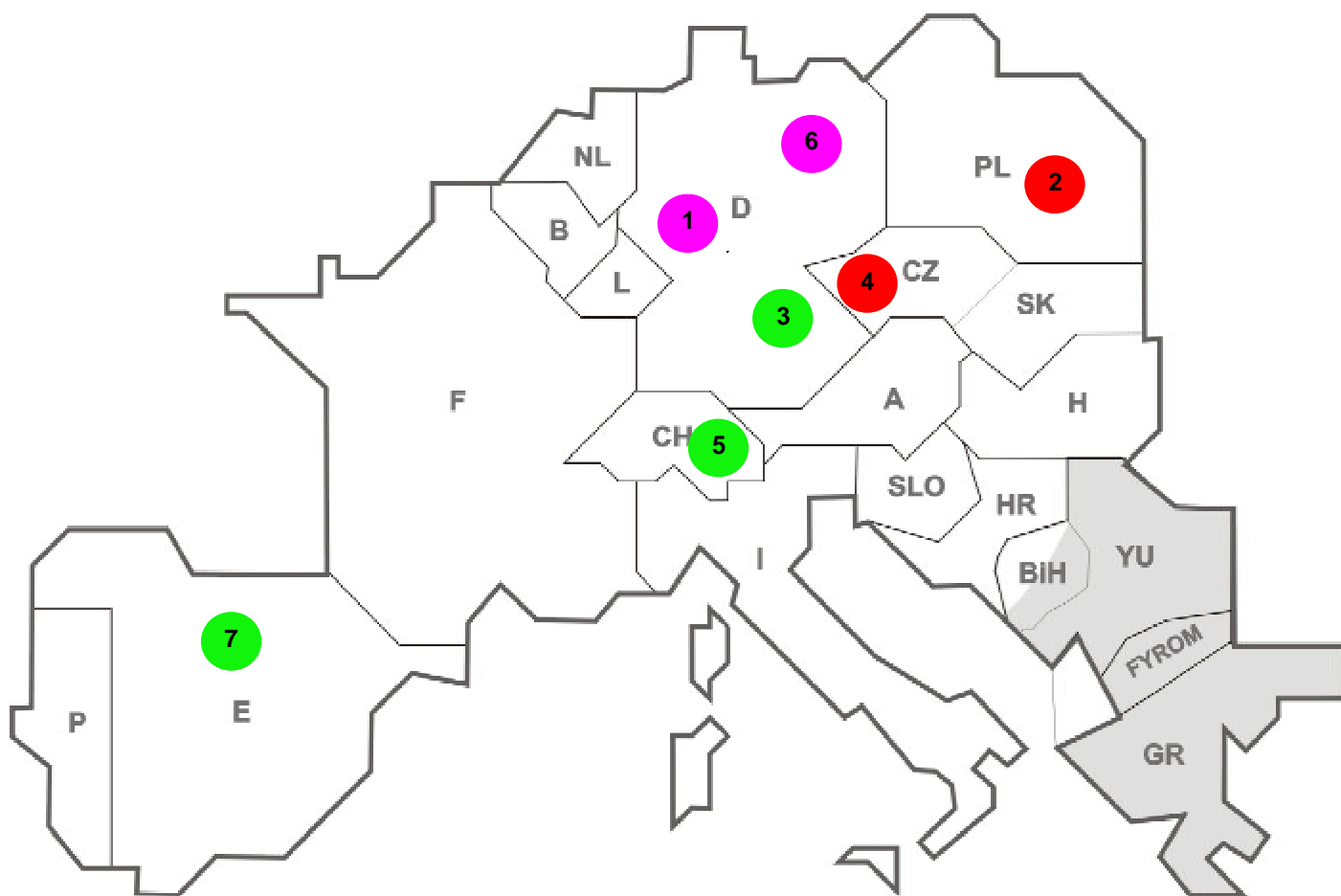






Reasons :

- R1, R2- Planned Unavailability
- R3- Overload (also calculated break)
- R4, R5, R6- Failed transmission network
- R7, R8, R9- External impacts
- R10, R11- Other reasons



Reasons:

R3 Overload

R7, R8, R9 External impacts (animals...)

R4, R5, R6 Failure in the transmission network

R10, R11 Other reasons

nbr	Country	Substation	Reason	Energie not supplied [MWh]	Total loss of power [MW]	Restoration time [min]	Equivalent time of interruption ¹
1	D	Rommerskirchen	R11	758	278	165	0,29
2	PL	Starno	R6	240	600	48	2,35
3	D	Witten	R8	51	150	34	0,16
4	CZ	Otrokovice	R4	4	0	4	0,00
5	CH	Bavona	R7	0	120	71	1,08
6	D	UW Mitte	R10	0	0	37486	0,00
7	E	Onuba	R8	0	77	6	0,20

¹ (year [in min] * power loss) / consumption last 12 months

Control area	Prog_exp	Prog_imp	Prog_exp3	Prog_imp3	Prog_exp11	Prog_imp11
B	357255	1029019	0	1411	312	1237
D	3219099	1874340	5250	2572	4149	3261
E	162289	810048	224	1200	319	1200
F	7563279	2106307	10249	3737	9889	4085
GR	6700	235973	0	311	0	455
I	39257	4182317	3	6312	3	5930
SLO	n.a.	n.a.	n.a.	n.a.	n.a.	n.a.
HR	144676	538459	461	605	604	835
YU	310177	770956	340	840	395	1255
NL	363402	1655702	1287	2004	167	2970
A	767369	664478	914	992	805	1033
P	63161	78389	0	75	50	178
CH	2023911	2884163	2959	5395	3318	2393
CZ	1628350	573424	2816	828	2401	887
H	730025	935330	1030	1260	1125	1550
PL	819220	197811	905	83	1888	326
SK	568830	227552	750	240	940	410

- Control areas can differ from national borders (i.e. German block which includes parts of A, L and DK).
- Values are calculated on an hourly base (MWh).
- This values are not the provisional values entered in the VULCANUS system, but the definitive values after an eventual correction during the actual date.
- Prog_exp: Sum of all positive values of every hour of every border
- Prog_imp: Sum of all negative values of every hour of every border
- Prog_exp3: Sum of all positive values the third Wednesday from 02:00 to 03:00 a.m.
- Prog_imp3: Sum of all negative values the third Wednesday from 02:00 to 03:00 a.m.
- Prog_exp11: Sum of all positive values the third Wednesday from 10:00 to 11:00 a.m.
- Prog_imp11: Sum of all negative values the third Wednesday from 10:00 to 11:00 a.m.
- YU = FRY + FYROM (Federal Republic of Yugoslavia and Former Yugoslav Republic of Macedonia)

Consumption load¹

16.01.02	B	D ⁶	E	F	GR	I	SLO	HR	YU ⁵	L	NL	A	P	CH	CZ	H	PL	SK	UCTE ⁸
3 ⁰⁰ h MW	9759	49900	22960	56625	5152	28768	1137	1579	6247	756	7236	n.a.	3563	n.a.	8155	4402	17524	3539	227302
11 ⁰⁰ h MW	11773	69500	31636	69552	7050	49641	1690	2572	7705	800	13138	n.a.	6117	n.a.	9086	5697	20462	4025	310444

Peak load on 3rd Wednesday¹

16.01.02	B	D	E	F	GR	I	SLO	HR	YU ⁵	L	NL	A	P	CH	CZ	H	PL	SK	UCTE ⁸
MW	12435	71100	33771	72024	7102	50910	1782	2623	8020	892	13622	n.a.	6484	n.a.	9407	5875	21738	4158	317565
Δ % ²	-4,2	1,0	9,0	5,0	6,5	3,6	5,1	10,4	-0,5	1,5	2,1	n.a.	1,7	n.a.	-2,1	5,4	-1,1	1,8	-1,9

Power produced in parallel operation³

16.01.02	B	D	E	F	GR	I	SLO	HR	YU ⁵	L	NL	A	P	CH	CZ	H	PL	SK	Others ⁴	UCTE ⁸
MW	10796	76400	30661	77771	6762	43939	1795	2572	5665	800	10999	n.a.	6066	n.a.	10623	5179	22462	4586	2400	317076

¹ Percentage as referred to total values in %

B	D	E	F	GR ⁷	I	SLO	HR	YU ⁵	L	NL	A	P	CH	CZ	H	PL	SK
100	91	94	97	91	100	95	100	96	99	90	n.a.	87	100	100	100	100	100

² Variation as compared to corresponding month of the previous year

³ Including autoproduction

⁴ Denmark (Jutland)

⁵ YU = FRY + FYROM (Federal Republic of Yugoslavia and Former Yugoslav Republic of Macedonia)

⁶ Provisional values

⁷ The representativity of data referring to the whole country including the isolated systems of the Greek island is 91%.
The representativity of data referring to the mainland interconnected system is 98%.

⁸ Without values for Austria and Switzerland

Existing lines with towers for lines with 2 circuits mounted

	B	D	E	F	GR	I	SLO	HR	JIEL	L	NL	A	P	CH	CZ	H	PL	SK	CX	
201	204	52	200	2751	228	443	1707	200	140	121	205	1708	140	10	294	200	115	704	201	203
200	203	100	1707	2003	100	443	134	207	100	110	207	1019	175	22	222	1031	100	211	201	200

	F	I	SLO	HR	JIEL	L	NL	A	P	CH	CZ	H	PL	SK
B	2/2					2/-	-/4							
D	2/4					8/-	-/8	9/3		5/7	2/4			
E	2/2								3/2					
	F	3/3								5/5				
	GR	-/1			-/1									
		I	1/1					1/-		6/2				
			SLO	2/3				1/2						
				HR	7/3									
									JIEL					
									A	1/2	2/1	2/1		
													CZ	2/2
													H	2/2
													PL	2/2



Contact

Boulevard Saint-Michel, 15
 B-1040 Brussels – Belgium
 Tel +32 2 741 69 40 – Fax +32 2 741 69 49

info@ucte.org
 www.ucte.org