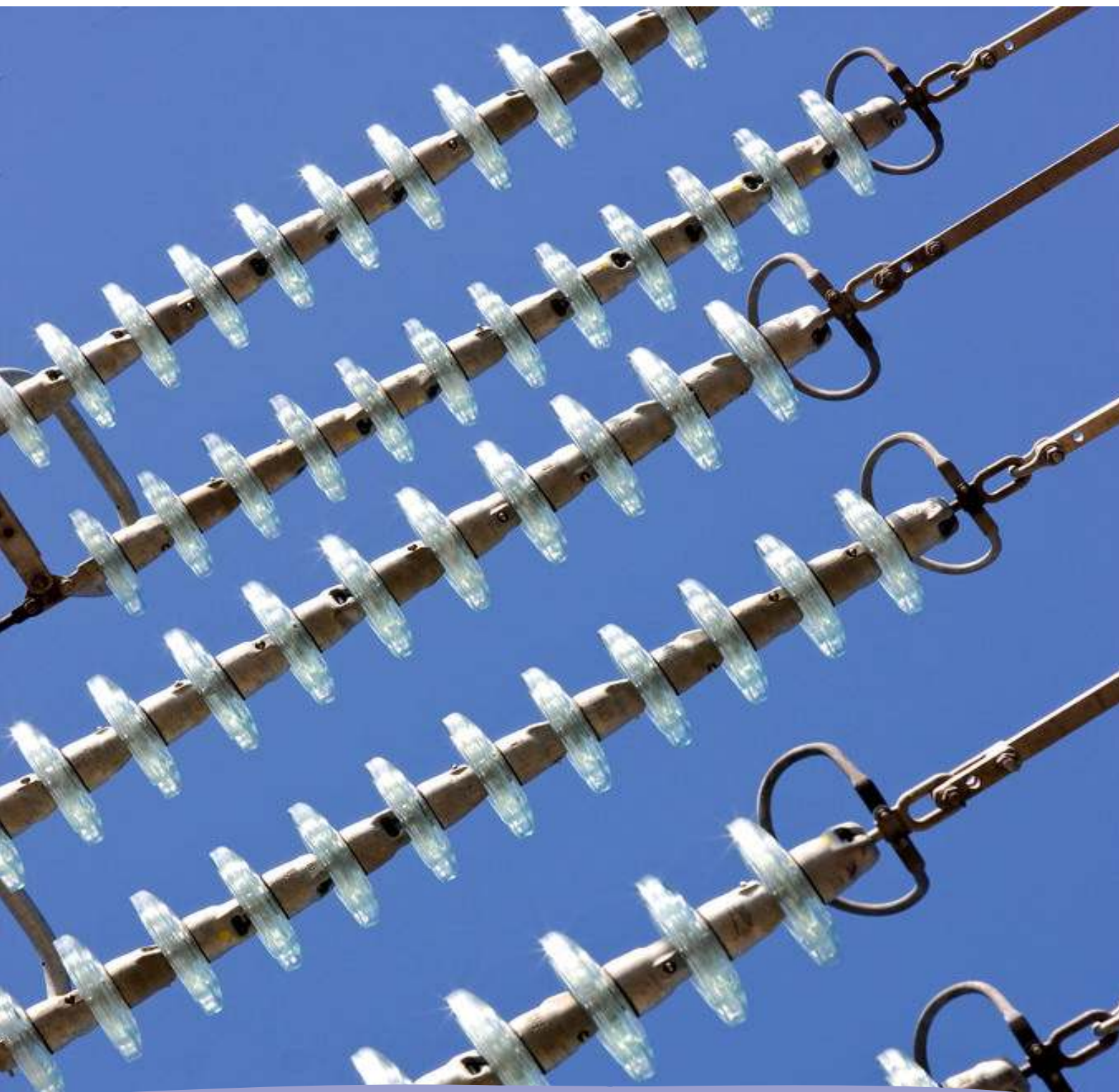


Monthly statistics



October 2013

Monthly provisional values as of 03 February 2014

European Network of
Transmission System Operators
for Electricity



Table of contents		Page
1	Electricity supply situation of the countries	2
2	Electricity supply representativity of the countries	3
3	Physical energy flows	4
4	Overview of the detailed physical energy flows	5
5	Load flows (night)	6
6	Load flows (day)	7
7	Unavailability of international tie lines (major events)	8
8	Network reliability (major events)	10
9	Highest and lowest load on the 3 rd Wednesday	11
10	Load diagrams on the 3 rd Wednesday	12
11	Water reservoirs Nordic	13

General remarks and abbreviations used in the tables

- All values of generation and consumption on page 2, 11 and 12 are calculated to represent 100% of the national values.
- All data with the country code GB represents monthly statistical data as sum of England, Scotland and Wales.
- All data with the country code NI represents the monthly statistical data of the Northern Ireland.
- CET Central European Time

Countries	Net generation in GWh									Exchange balance in GWh	Pump in GWh	Consumption	
	Therm. nuclear	Fossil fuels	Hydro power	Other renew.	of which wind	of which solar	of which bio-mass	Non identifiable	Total			monthly [GWh]	var. [%]
AT	0	1181	3032	379	n.a.	n.a.	n.a.	655	5247	1135	482	5900	1,1
BA	0	853	290	0	0	0	0	0	1143	-141	0	1002	1,2
BE ²	4394	1910	143	825	421	151	253	0	7272 ¹	361	163	7470	6,1
BG	755	2300	241	202	85	107	0	0	3498	-753	97	2649	11,0
CH	2455	172	2953	126	9	0	0	0	5706 ¹	-218	199	5289	-2,9
CY	0	299	0	19	19	0	0	0	318	0	0	318	-12,4
CZ	2802	3908	275	207	49	159	130	0	7192 ¹	-1734	139	5319	-1,2
DE ³	8238	25802	1819	7673	5419	1811	444	0	43532	-4461	619	38452	-16,6
DK	0	1477	1	1404	1211	0	193	0	2882 ¹	-53	0	2829	-4,2
EE	0	926	1	112	59	0	53	0	1039	-378	0	661	-3,5
ES	4339	10104	2073	5565	4054	1009	502	24	22105	-679	306	21120	1,3
FI	1990	1927	696	1035	82	0	953	84	5732 ¹	1338	0	7070	-1,4
FR	31092	3388	4861	2414	1609	307	498	0	41755	-4101	606	37048	-4,1
GB	5535	16861	597	3124	2061	0	0	0	26117	1020	321	26816	-4,4
GR	0	2840	295	736	228	490	18	0	3871 ¹	175	1	4045	1,0
HR	0	443	500	40	40	0	0	0	983	365	9	1339	-0,6
HU	1135	1244	0	0	0	0	0	0	2379	1215	0	3594	11,1
IE	0	1512	78	428	418	0	0	10	2028 ¹	241	49	2220	1,4
IS	0	0	1079	427	0	0	0	0	1506	0	0	1506	2,8
IT	0	15915	3589	2639	746	1440	0	0	22143	4447	228	26362	-2,8
LT	0	237	74	100	60	3	36	0	411 ¹	563	64	910	-0,3
LU	0	184	92	27	9	7	3	0	303	374	117	560	3,5
LV	0	371	63	62	14	0	21	0	496	134	0	630	-5,3
ME	0	122	129	0	0	0	0	0	251	2	0	253	0,8
MK	0	340	69	0	0	0	0	0	409	230	0	639	8,1
NI	0	465	1	138	130	0	5	0	604	144	0	748	-13,5
NL	0	7050	0	1234	627	n.a.	n.a.	0	8284	1579	0	9863	0,4
NO	0	310	10383	182	182	0	0	0	10875 ¹	-287	65	10523	-4,2
PL ⁴	0	11855	194	1174	622	0	551	0	13223 ¹	-435	77	12711	1,3
PT	0	1523	953	1133	873	34	226	0	3609 ¹	530	128	4011	1,1
RO	829	2417	1090	508	426	53	29	0	4844	-379	19	4446	0,6
RS	0	2893	615	0	0	0	0	0	3508	-179	81	3248	5,6
SE	4765	249	5031	1822	1079	0	743	0	11867 ¹	-512	0	11355	-5,2
SI	0	448	323	0	0	0	0	0	771	323	0	1094	5,4
SK	1263	401	294	113	1	42	53	85	2156 ¹	154	39	2271	-1,4
ENTSO-E	69592	121927	41834	33848	20533	5613	4711	858	268059¹	20	3809	264271	-4,0

¹ Including deliveries from industry

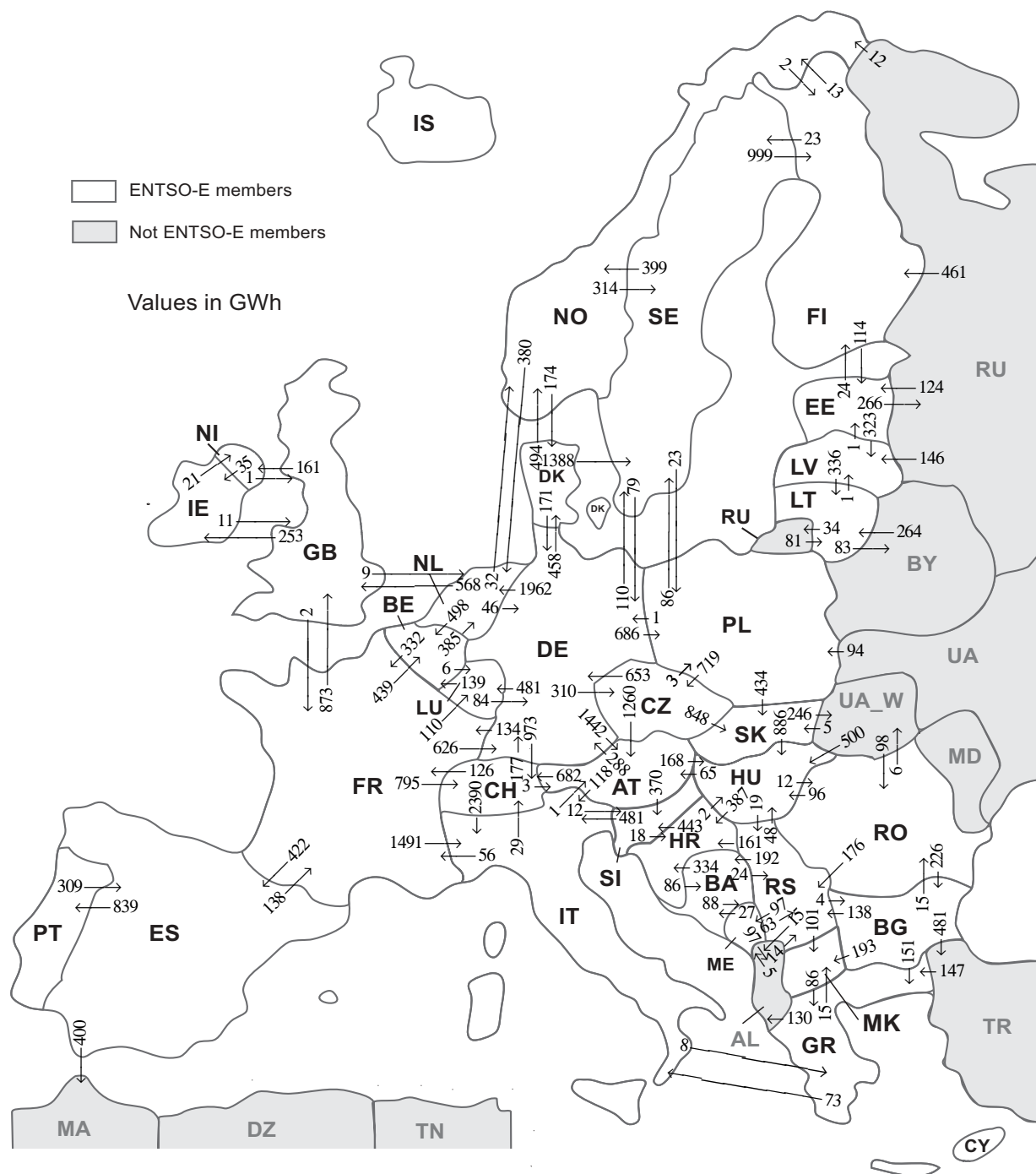
² The reported figures are best estimates based on actual measurements and extrapolations.

³ Wind and PV from TSO data, rest from official statistics.

⁴ Operational data. Other renewable includes energy from biomass co-firing in conventional thermal units.

All representativities of the national generation and consumption values on page 2 used to calculate values at a representativity of 100% as stated in the table above:

Countries	Representativities of the national values in %					Consumption
	Thermal nuclear	Fossil fuels	Hydro power	Other renewable except hydro	Non identifiable	
AT	100	100	100	100	100	100
BA	100	100	100	100	100	100
BE	100	100	100	100	100	100
BG	100	100	99	95	100	99
CH	100	100	100	100	100	100
CY	100	100	100	100	100	100
CZ	100	100	100	100	100	100
DE	100	100	100	100	100	100
DK	100	100	100	100	100	100
EE	100	100	100	100	100	100
ES	100	100	100	100	100	100
FI	100	100	100	100	100	100
FR	100	100	100	100	100	100
GB	100	96	87	67	100	100
GR	100	100	100	100	100	100
HR	100	100	100	100	100	100
HU	100	100	100	100	100	100
IE	100	100	100	100	100	100
IS	100	100	100	100	100	100
IT	100	100	100	100	100	100
LT	100	100	100	100	100	100
LU	100	100	100	100	100	100
LV	100	100	100	100	100	100
ME	100	100	100	100	100	100
MK	100	100	100	100	100	100
NI	100	100	100	100	100	100
NL	100	100	100	100	100	100
NO	100	100	100	100	100	100
PL	100	100	100	100	100	100
PT	100	100	100	100	100	100
RO	100	100	100	100	100	100
RS	100	100	100	100	100	100
SE	100	100	100	100	100	100
SI	100	100	100	100	100	100
SK	100	100	100	100	100	100



Sum of physical energy flows between ENTSO-E countries: **33205 GWh**

Total physical energy flows: **36914 GWh**

Not ENTSO-E members:

Albania, Belarus, Morocco, Republic of Moldavia, Republic of Turkey, Russia, Ukraine and Ukraine West

These physical energy flows were measured on the cross-frontier transmission lines (≤ 110 kV) listed in table characteristics of the cross-frontier lines published in the Statistical Yearbook. These values may differ from the official statistics and the exchange balances on page 2.

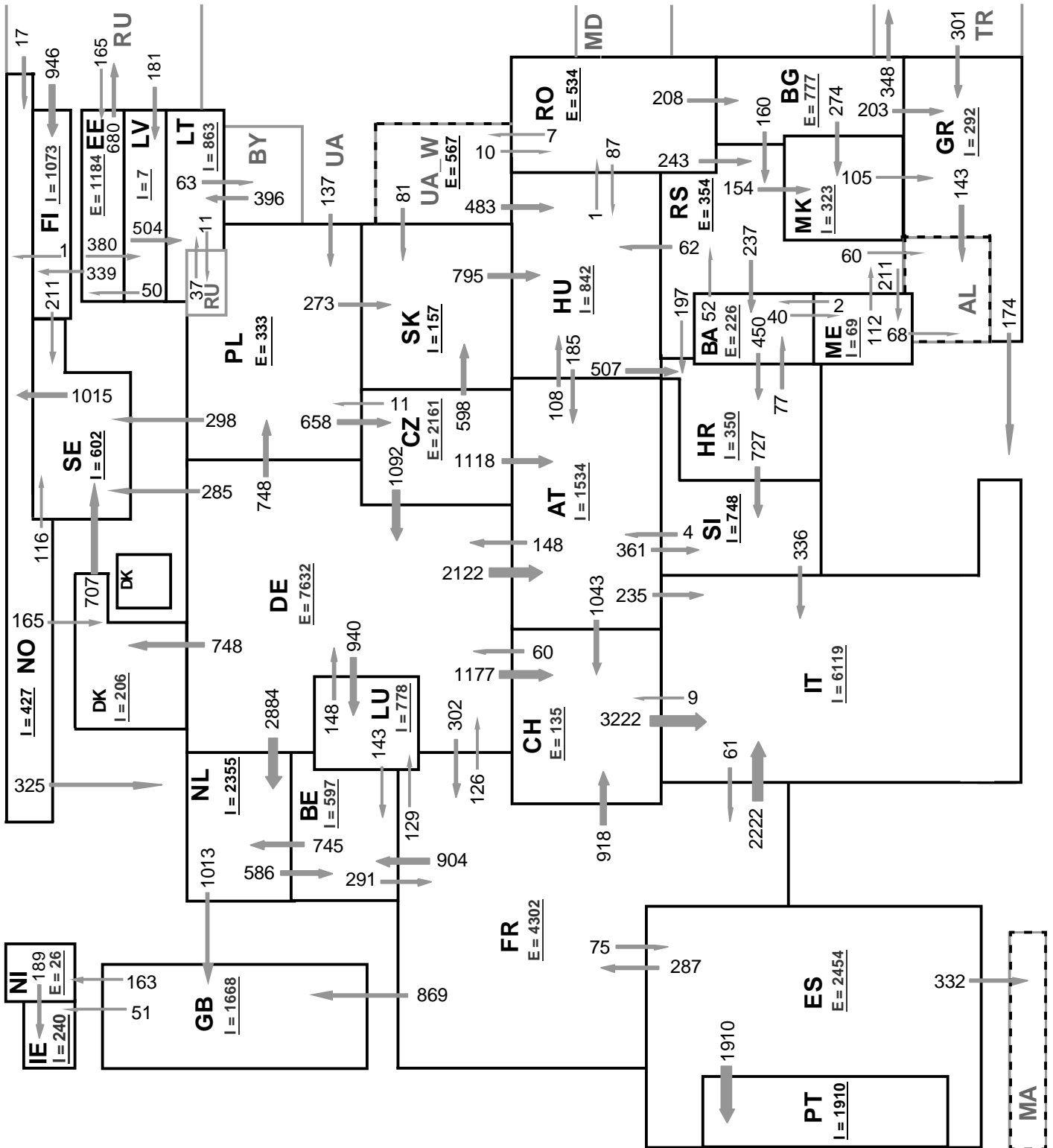
Outside flows countries	Inside flows of the countries																																		
	AT	BA	BE	BG	CH	CZ	DE	DK	EE	ES	FI	FR	GB	GR	HR	HU	IE	IT	LT	LU	LV	ME	MK	NI	NL	NO	PL	PT	RO	RS	SE	SI	SK	Other III ¹	
AT	-	-	-	-	682	0	288	-	-	-	-	-	-	-	168	-	118	-	-	-	-	-	-	-	-	-	-	-	-	-	-	-	370	-	-
BA	-	-	-	-	-	-	-	-	-	-	-	-	-	334	-	-	-	-	-	-	-	88	-	-	-	-	-	-	-	24	-	-	-	-	
BE	-	-	-	-	-	-	-	-	-	-	-	332	-	-	-	-	-	-	6	-	-	-	-	385	-	-	-	-	-	-	-	-	-	-	
BG	-	-	-	-	-	-	-	-	-	-	-	-	151	-	-	-	-	-	-	-	-	193	-	-	-	-	-	15	138	-	-	-	-	481	
CH	3	-	-	-	-	177	-	-	-	-	126	-	-	-	-	-	-	-	-	-	-	-	-	-	-	-	-	-	-	-	-	-	-	-	
CZ	1260	-	-	-	-	653	-	-	-	-	-	-	-	-	-	-	-	-	-	-	-	-	-	-	-	3	-	-	-	-	-	-	848	-	
DE	1442	-	-	-	973	310	458	-	-	-	134	-	-	-	-	-	-	481	-	-	-	-	-	1962	686	-	-	-	110	-	-	-	-	-	
DK	-	-	-	-	-	121	-	-	-	-	-	-	-	-	-	-	-	-	481	-	-	-	-	-	171	-	-	-	-	1388	-	-	-	-	
EE	-	-	-	-	-	-	-	-	-	24	-	-	-	-	-	-	-	-	-	323	-	-	-	-	-	-	-	-	-	-	-	-	-	266	
ES	-	-	-	-	-	-	-	-	-	-	138	-	-	-	-	-	-	-	-	-	-	-	-	-	-	-	839	-	-	-	-	-	-	400	
FI	-	-	-	-	-	-	-	114	-	-	-	-	-	-	-	-	-	-	-	-	-	-	-	-	13	-	-	-	23	-	-	-	-	0	
FR	-	439	-	795	-	626	-	422	-	-	873	-	-	-	-	-	1491	110	-	-	-	-	-	-	-	-	-	-	-	-	-	-	-	-	
GB	-	-	-	-	-	-	-	-	-	-	2	-	-	-	-	253	-	-	-	-	-	-	-	161	9	-	-	-	-	-	-	-	-	-	
GR	-	-	0	-	-	-	-	-	-	-	-	-	-	-	-	-	-	73	-	-	-	15	-	-	-	-	-	-	-	-	-	-	-	130	
HR	-	86	-	-	-	-	-	-	-	-	-	-	-	-	2	-	-	-	-	-	-	-	-	-	-	-	-	0	-	443	-	-	-	-	
HU	65	-	-	-	-	-	-	-	-	-	-	-	-	387	-	-	-	-	-	-	-	-	-	-	-	-	-	12	19	-	-	0	0	-	
IE	-	-	-	-	-	-	-	-	-	-	-	11	-	-	-	-	-	-	-	-	-	-	-	21	-	-	-	-	-	-	-	-	-	-	
IT	1	-	-	29	-	-	-	-	-	-	56	-	8	-	-	-	-	-	-	-	-	-	-	-	-	-	-	-	-	-	-	12	-	-	
LT	-	-	-	-	-	-	-	-	-	-	-	-	-	-	-	-	-	-	-	-	-	-	-	-	-	-	-	-	-	-	-	-	-	117	
LU	-	139	-	-	-	84	-	-	-	0	-	-	-	-	-	-	-	-	-	-	-	-	-	-	-	-	-	-	-	-	-	-	-	-	
LV	-	-	-	-	-	-	-	1	-	-	-	-	-	-	-	-	-	336	-	-	-	-	-	-	-	-	-	-	-	-	-	-	-	0	
ME	-	27	-	-	-	-	-	-	-	-	-	-	-	-	-	-	-	-	-	-	-	-	-	-	-	-	-	-	-	-	-	-	-	97	
MK	-	-	0	-	-	-	-	-	-	-	-	-	86	-	-	-	-	-	-	-	-	-	-	-	-	-	-	-	-	-	63	-	-	-	
NL	-	-	-	-	-	-	-	-	-	-	-	1	-	-	35	-	-	-	-	-	-	-	-	-	-	-	-	-	-	-	-	-	-	-	
NL	-	498	-	-	-	46	-	-	-	-	-	568	-	-	-	-	-	-	-	-	-	-	-	-	-	-	-	-	-	-	-	-	-	-	
NO	-	-	-	-	-	174	-	-	2	-	-	-	-	-	-	-	-	-	-	-	-	-	-	380	-	-	-	-	-	-	314	-	-	0	
PL	-	-	-	-	719	1	-	-	-	-	-	-	-	-	-	-	-	-	-	-	-	-	-	-	-	-	-	-	-	-	86	-	434	0	
PT	-	-	-	-	-	-	-	309	-	-	-	-	-	-	-	-	-	-	-	-	-	-	-	-	-	-	-	-	-	-	-	-	-	-	
RO	-	-	226	-	-	-	-	-	-	-	-	-	-	96	-	-	-	-	-	-	-	-	-	-	-	-	-	-	-	-	-	176	-	6	
RS	-	192	-	4	-	-	-	-	-	-	-	-	161	48	-	-	-	-	-	-	-	97	101	-	-	-	-	0	-	-	-	-	-	15	
SE	-	-	-	-	-	79	0	-	999	-	-	-	-	-	-	-	-	-	-	-	-	-	-	-	399	23	-	-	-	-	-	-	-	-	
SI	0	-	-	-	-	-	-	-	-	-	-	-	18	-	-	-	481	-	-	-	-	-	-	-	-	-	-	-	-	-	-	-	-	-	
SK	-	-	-	-	0	-	-	-	-	-	-	-	-	886	-	-	-	-	-	-	-	-	-	-	-	0	-	-	-	-	-	-	-	246	
Other III ¹	-	-	-	0	-	-	-	124	0	461	-	147	-	500	-	-	345	-	146	5	-	-	-	-	12	94	-	98	14	-	-	-	5	-	

Other III¹: Albania, Belarus, Morocco, Republic of Moldavia, Republic of Turkey, Russia, Ukraine and Ukraine-West

Sum of the monthly energy flows inside and outside of each country in GWh

	flows inside	flows outside
AT	2771	1626
BA	305	446
BE	1076	723
BG	230	978
CH	2479	2696
CZ	1029	2764
DE	2075	6556
DK	632	1680
EE	239	613
ES	731	1377
FI	1486	150
FR	788	4756
GB	1453	425
GR	392	218
HR	900	531
HU	1700	483
IE	288	32

	flows inside	flows outside
IT	4553	106
LT	681	118
LU	597	223
LV	470	337
ME	190	187
MK	309	86
NI	182	36
NL	2736	1144
NO	627	870
PL	806	1240
PT	839	309
RO	125	504
RS	434	618
SE	1921	1500
SI	825	499
SK	1287	1132
ENTSO-E	30664	30625



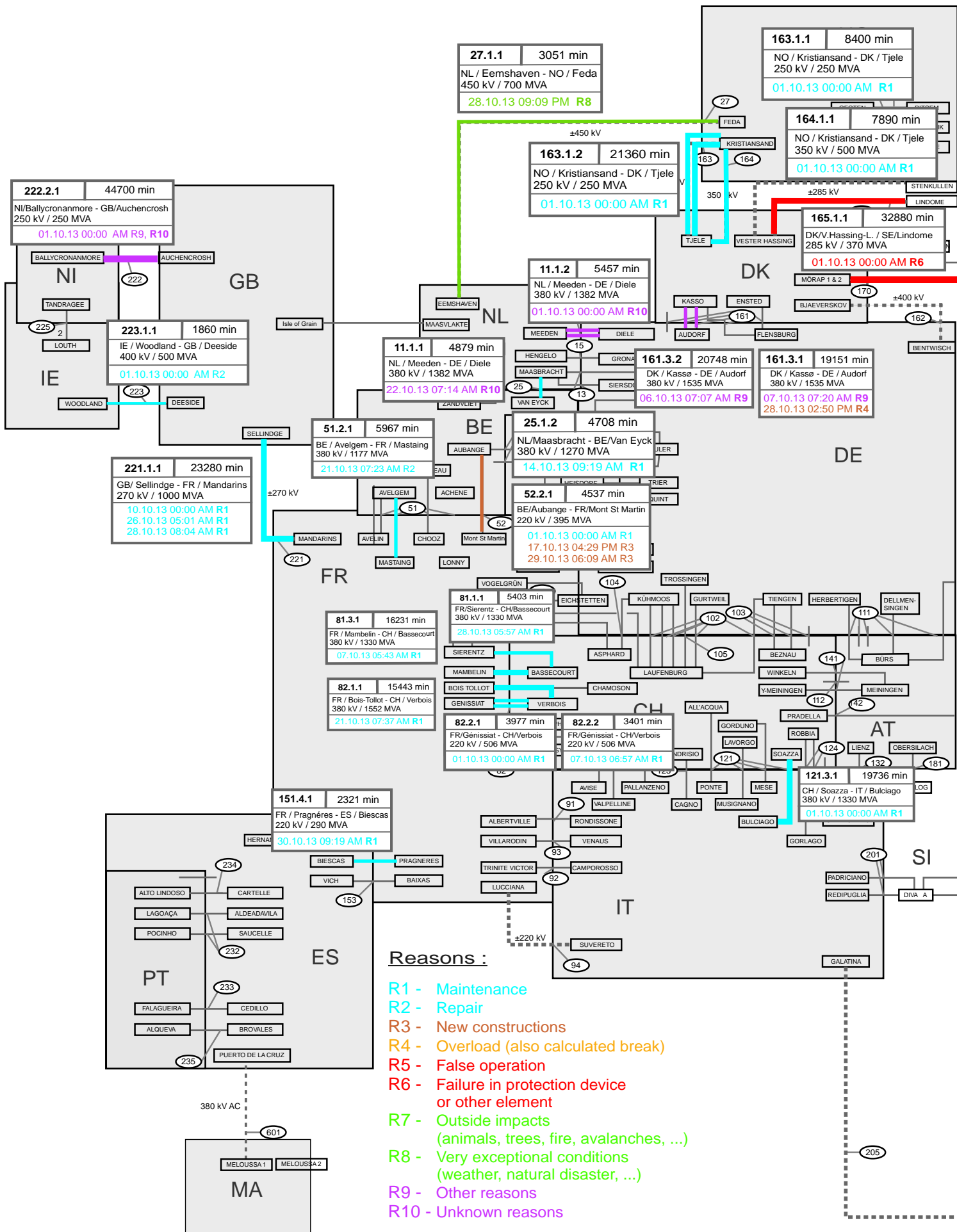
Sum of load flows in MW

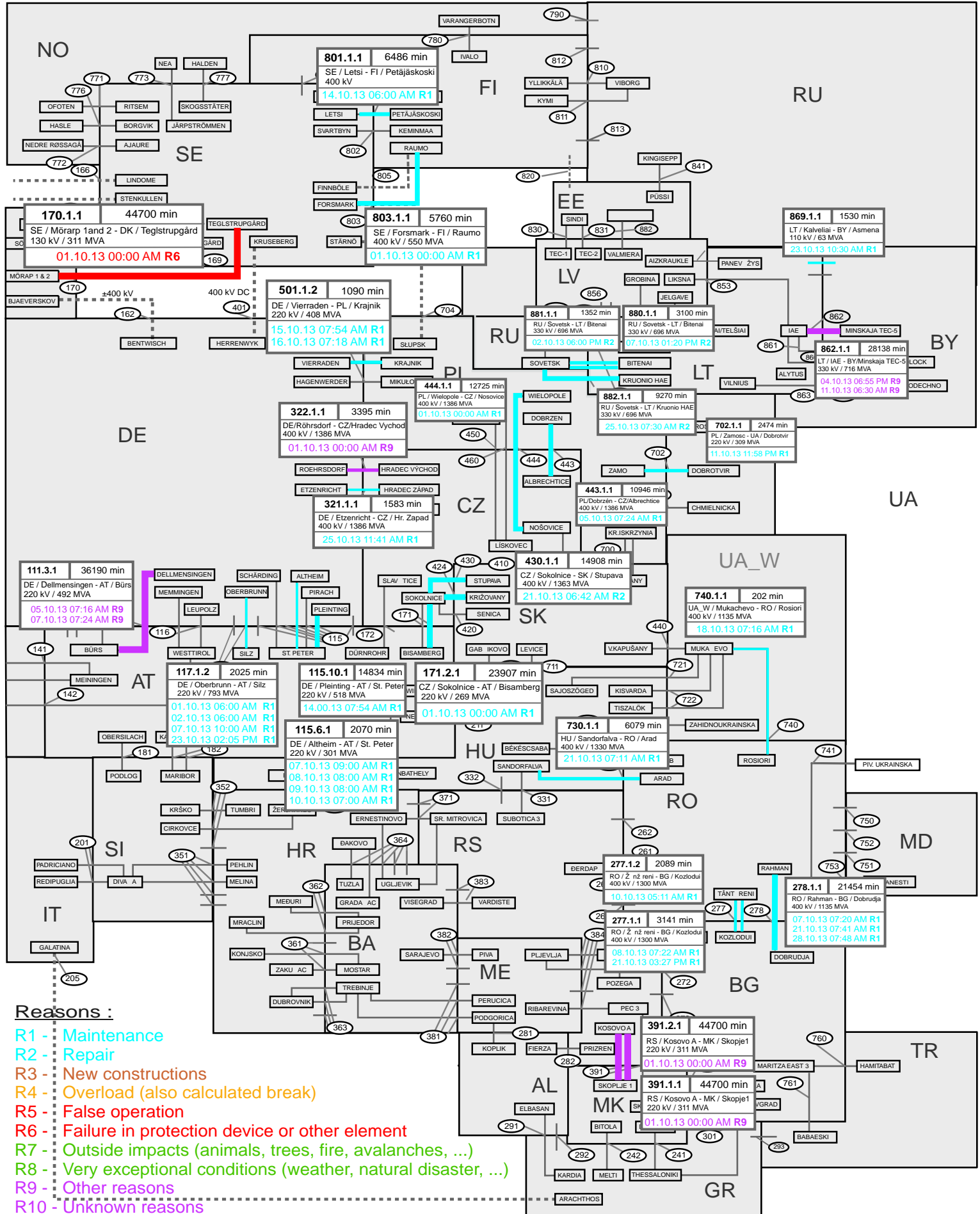
ENTSO-E = 38686 MW

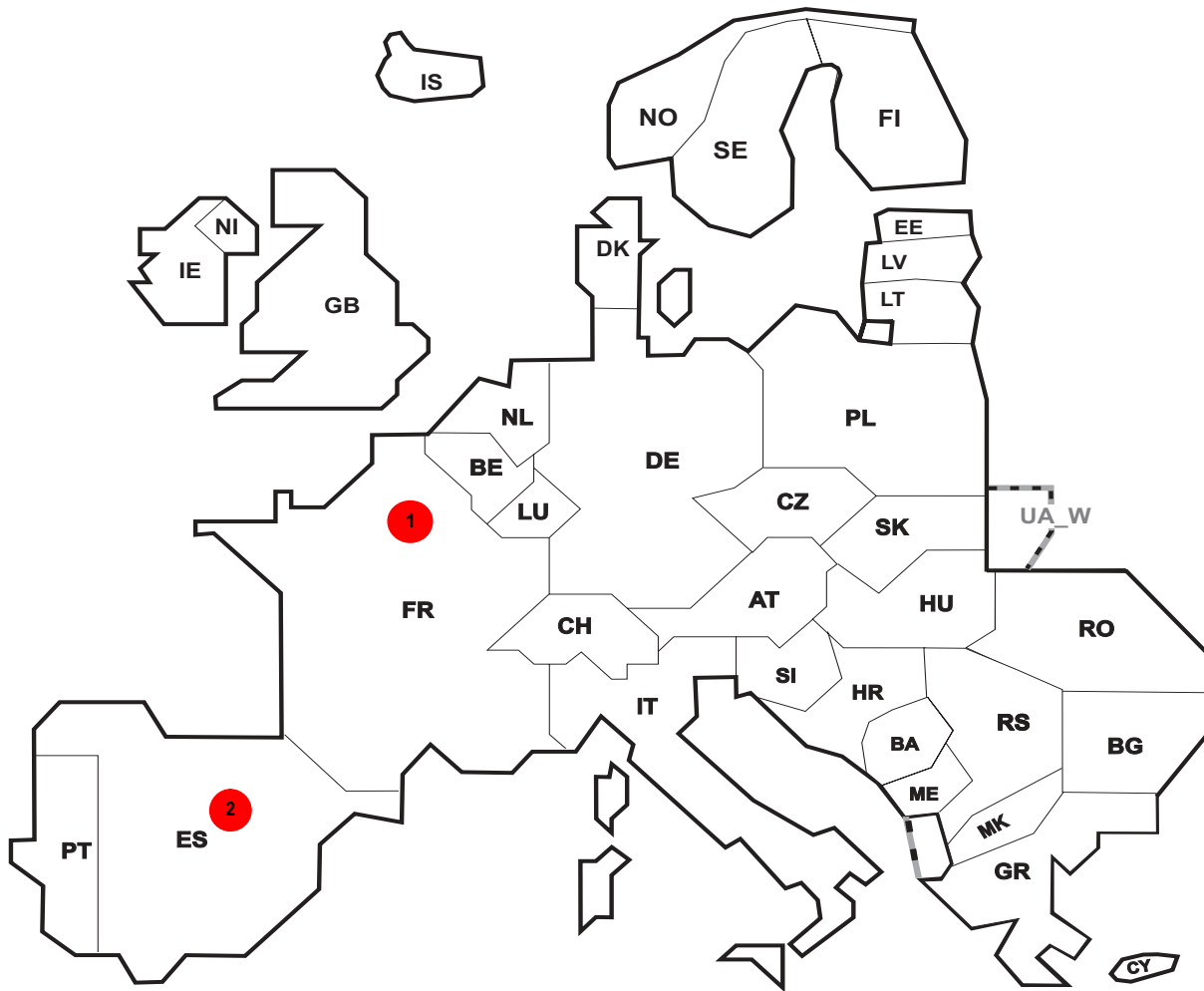
Total = 43152 MW

Synchronous operation with ENTSO-E region

I = Import balance
E = Export balance







Reasons:

R4 Overload (also calculated break)

R5 False operation

R6 Failure in protection device or other element

R7 Outside impacts (animals, trees, fire, avalanches, ...)

R8 Very exceptional conditions (weather, natural disaster, ...)

R9 Other reasons

R10 Unknown reasons

No	Country	Substation	Reason	Energy not supplied [MWh]	Total loss of power [MW]	Average interruption duration [min]	Equivalent time of interruption ¹
1	FR	DA RBLAY	R6	95	27	210	0,101
2	ES	COSLADA	R5	6	0	5	0,013

Information about incidents in other countries are not shown with energy not supply equal zero or unavailable in the database.

¹ (year [in min] * energy not supplied) / consumption last 12 months

Highest and lowest load on the 16.10.2013 CET of each country

	Highest load MW	variation % ¹	Low est load MW	variation % ¹	Load representativity %
AT	9771	5,9	6231	-0,4	100
BA	1716	-0,2	983	0,1	100
BE ²	12264	10,8	8175	3,4	100
BG	5010	8,1	3095	7,8	99
CH	8665	0,0	6007	0,0	100
CY	580	-7,2	308	-5,2	100
CZ	9256	9,4	6011	-2,0	100
DE	73166	-2,4	46925	0,9	91
DK	4711	-2,9	2797	-3,6	100
EE	1056	-3,1	651	-1,1	100
ES	32736	-1,8	21436	0,9	100
FI	10786	0,4	8178	1,1	100
FR	61907	-0,7	43147	-2,5	100
GB	47639	-1,4	27031	-0,5	100
GR	6269	-2,3	3951	-0,2	100
HR	2353	0,9	1290	-6,0	100
HU	5445	3,0	3560	3,1	100
IE	3818	-1,2	2059	-1,5	100
IS	2096	2,3	1960	4,1	100
IT	45222	0,2	26704	-2,0	100
LT	1473	-5,8	880	-3,8	100
LU	727	-14,2	494	-18,3	100
LV	1056	1,5	596	-0,7	100
ME	405	-5,2	235	-4,1	100
MK	983	4,7	635	15,5	100
NI	1403	-0,8	672	-6,0	100
NL	14140	-6,2	8856	-2,8	100
NO	16242	0,5	12365	-1,9	100
PL ³	21290	1,7	14055	1,0	100
PT	6888	1,3	4357	0,5	100
RO	7011	-1,8	4777	-4,0	100
RS	5451	3,3	3082	5,3	100
SE	18079	3,1	12754	2,2	100
SI	1838	5,1	1286	19,6	100
SK	3735	-0,8	2725	-2,4	100
ENTSO-E	438682	-1,0	290699	-0,4	

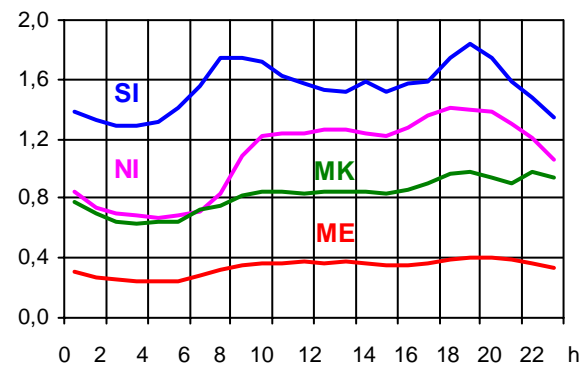
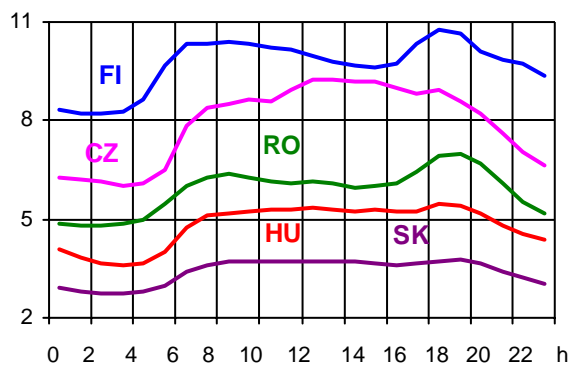
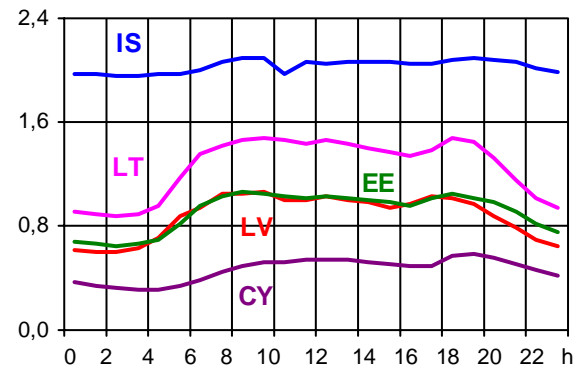
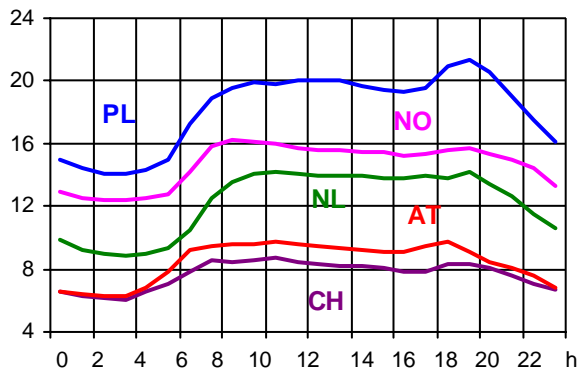
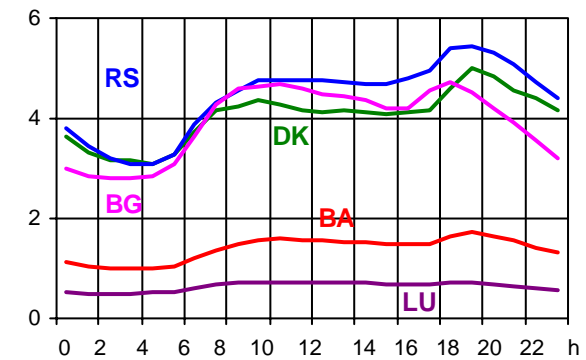
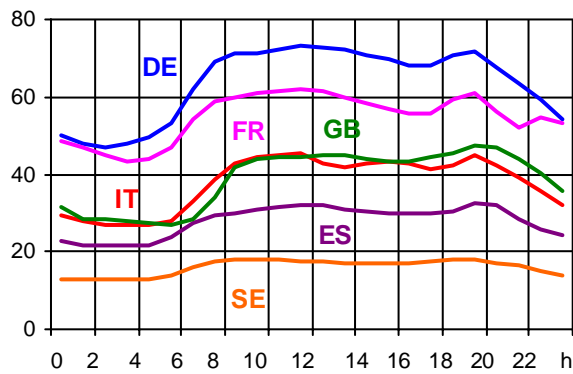
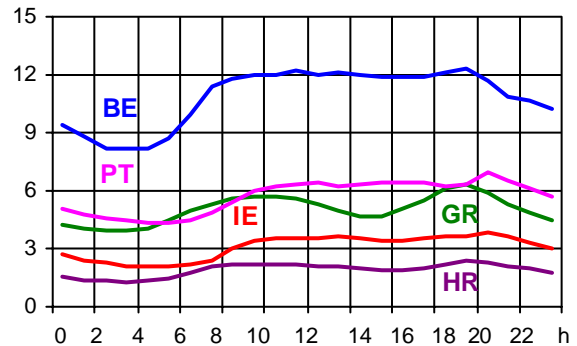
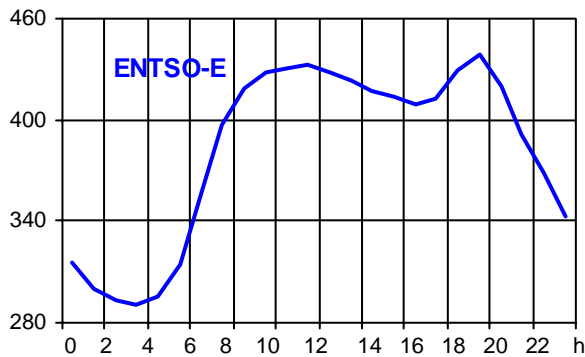
¹ Variation as compared to corresponding month of the previous year

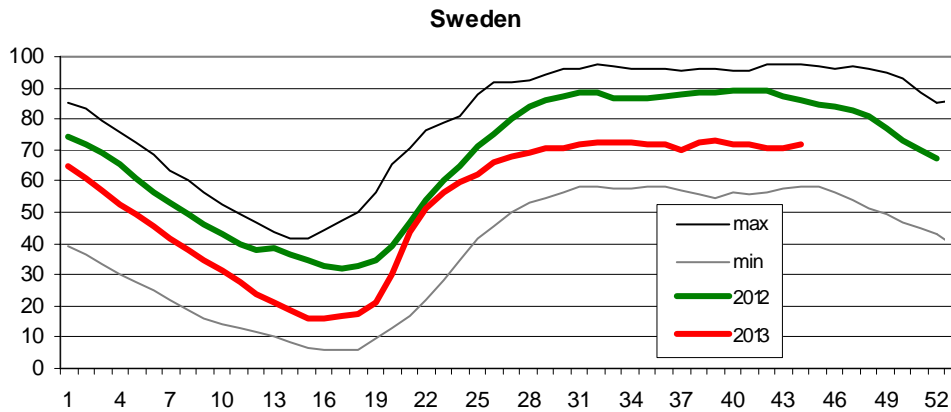
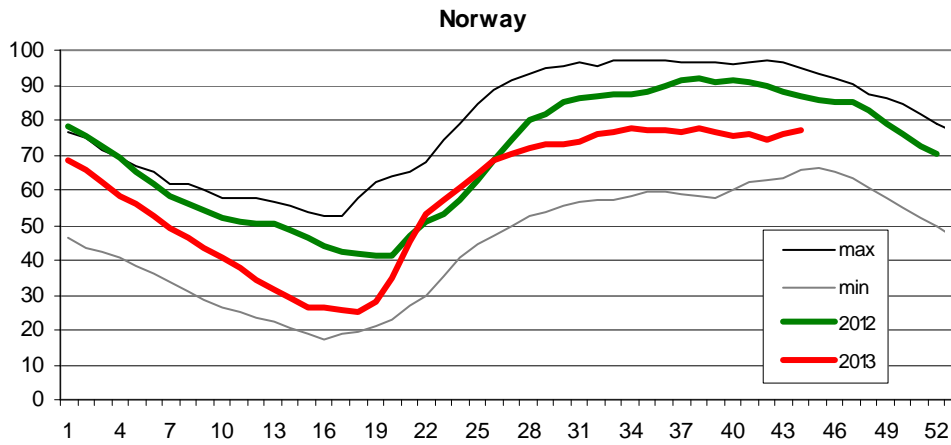
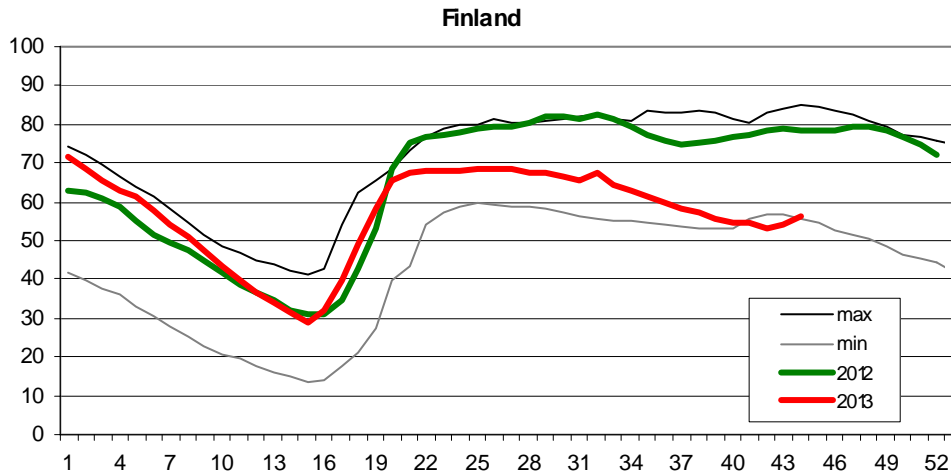
² The reported figures are best estimates based on actual measurements and extrapolations.

³ Operational data

Consumption hourly load curves on 16.10.2013 CET

Values in GW





Finland: Reservoir capacity: 5.530 GWh
 Minimum and maximum limits are based on values for the years 1990-2002

Norway: Reservoir capacity: 81.729 GWh
 The statistics are supposed to cover 97.1 percent of the total reservoir capacity.
 The total reservoir capacity is 84 147 GWh
 Minimum and maximum limits are based on values for the years 1990-2003

Sweden: Reservoir capacity: 33.758 GWh
 Minimum and maximum limits are based on values for the years 1950-2006

Contact

Avenue de Cortenbergh, 100
B-1000 Brussels – Belgium
Tel + 32 2 741 0950
Fax + 32 2 741 0951

info@entsoe.eu
www.entsoe.eu

