

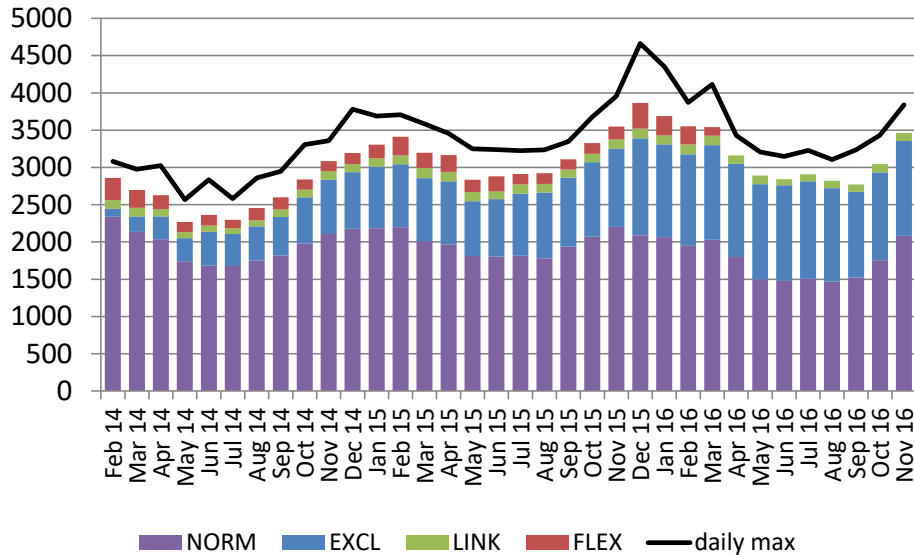
Euphemia Performance

MESC

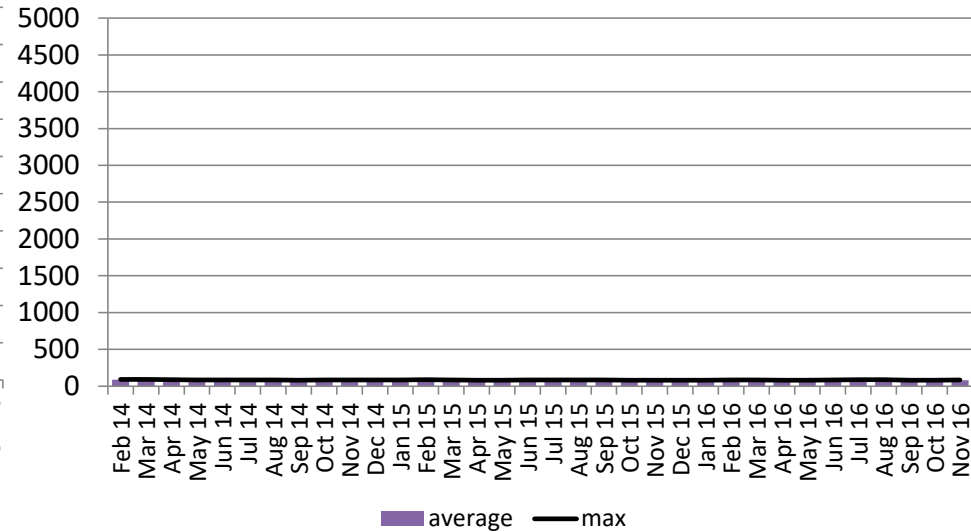
9 December 2016

MRC Orderbook Growth – Block and Complex Orders

MRC - Daily average number of submitted block orders



Daily average number of submitted complex orders

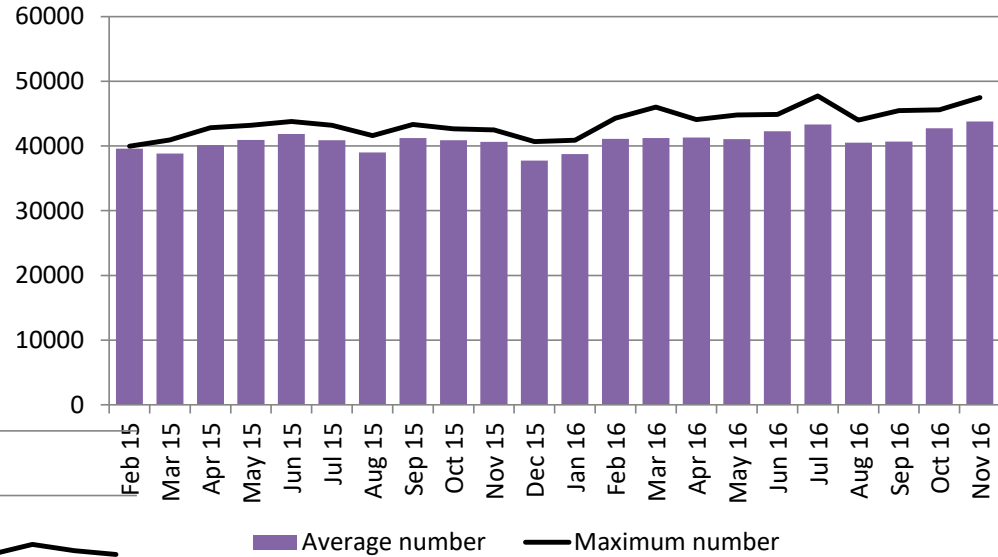


#daily MRC Blocks continues to vary; Since 2015 the trend is an increase in the number of exclusive blocks

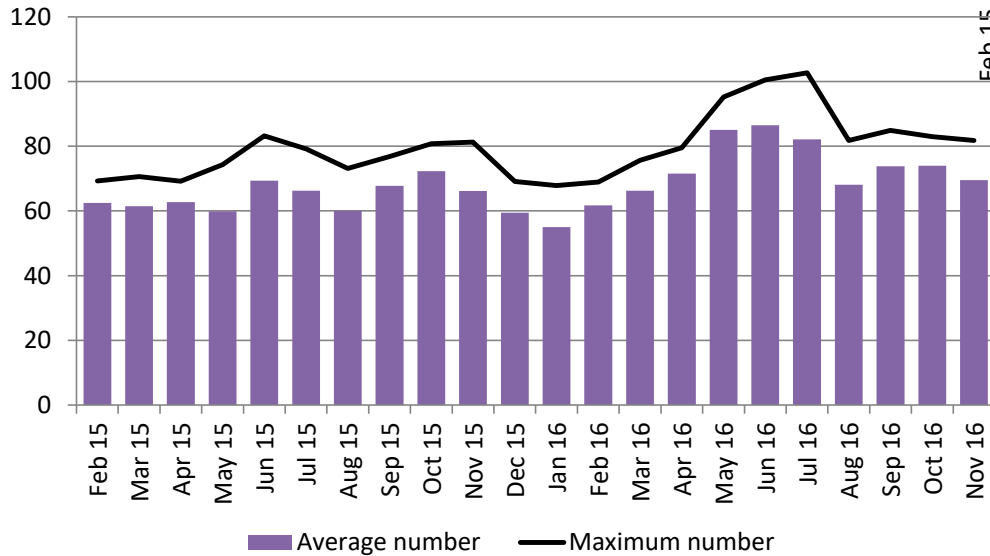
#Complex orders stable (approx. 100 per day)

MRC Orderbook Growth – Merit/PUN orders

Number of PUN/Merit Orders

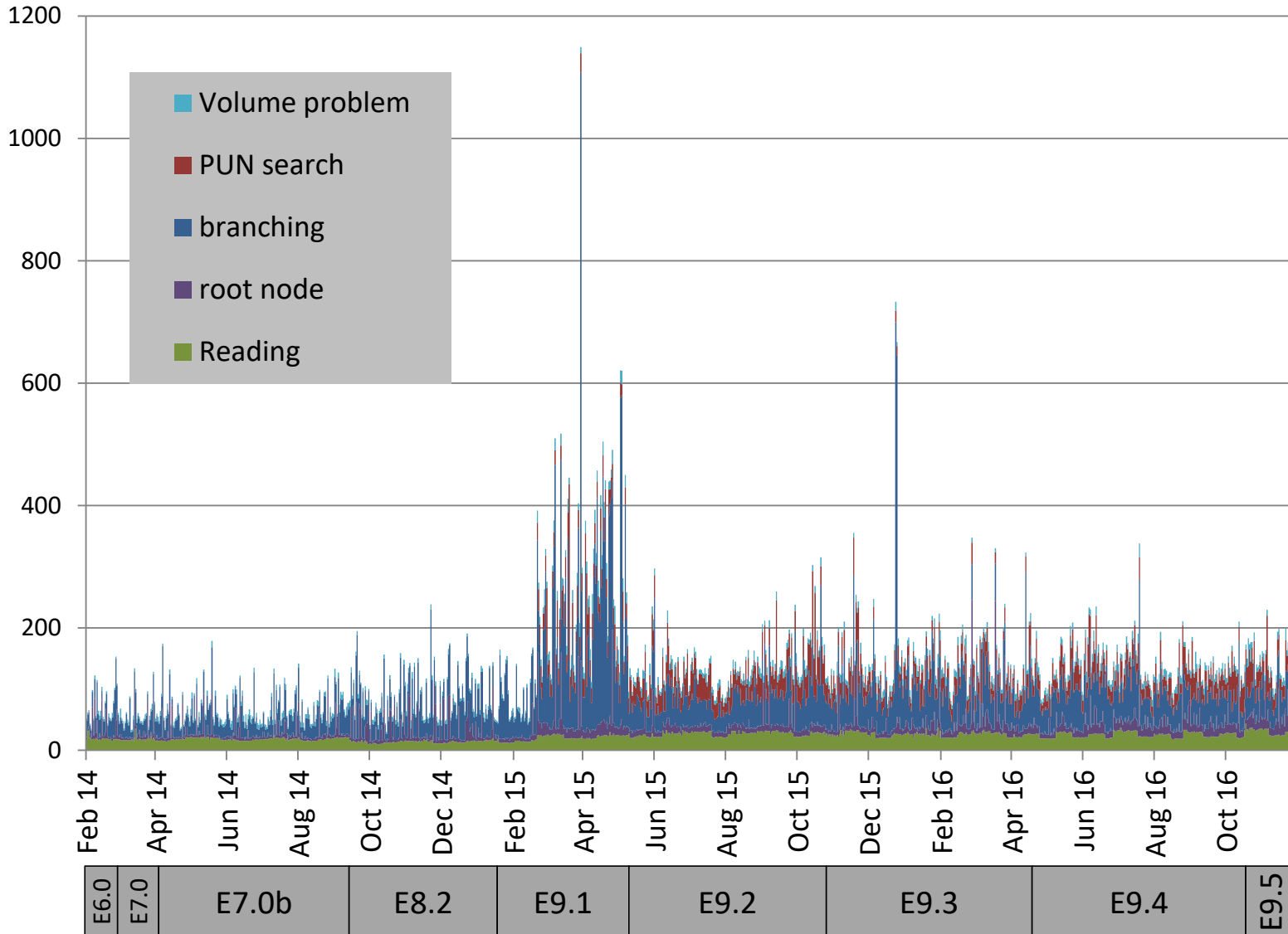


Hourly number of PUN steps



Statistics - PCR Algorithmic Performance

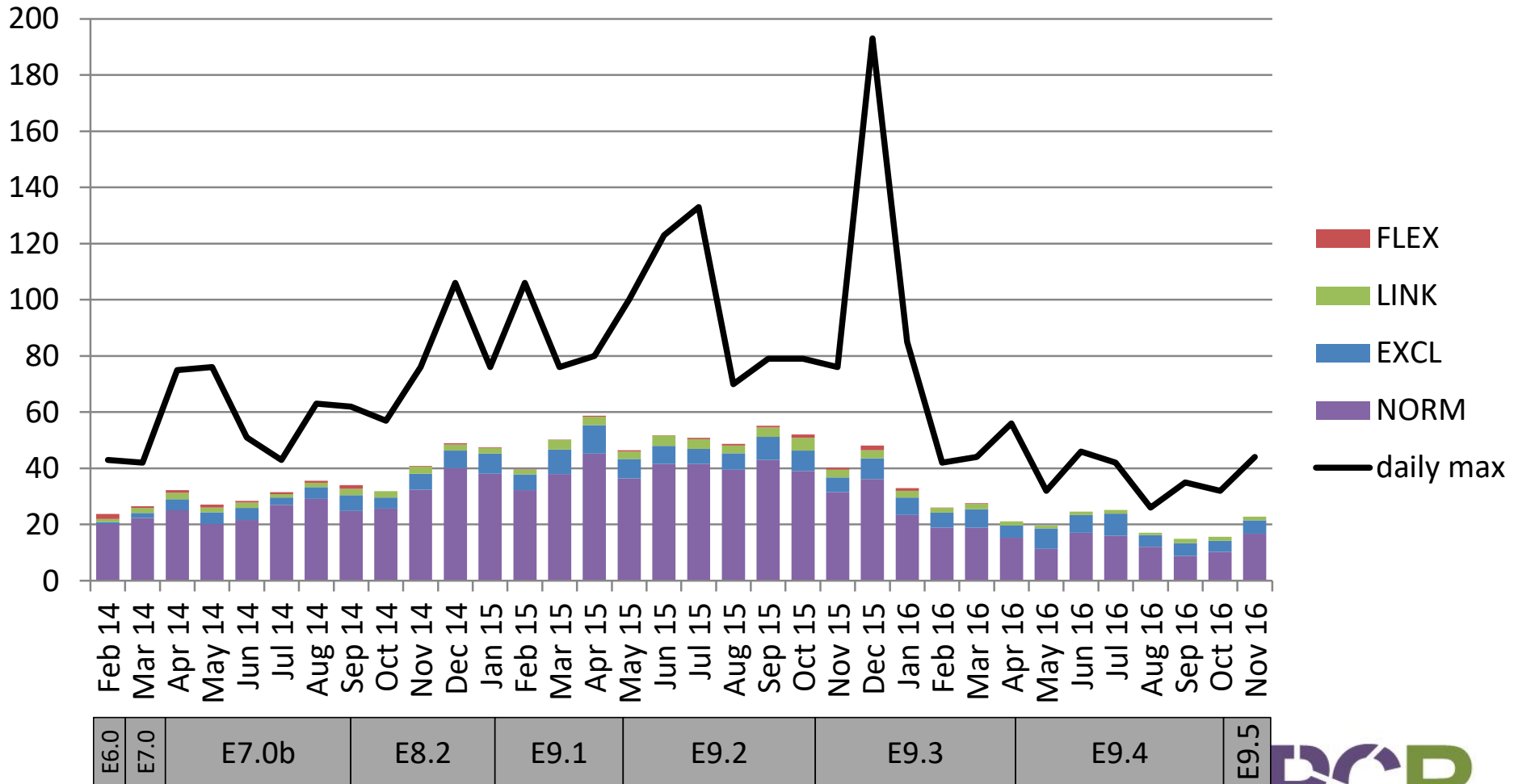
PCR algorithm performance update – Time to first solution (s) on MRC scope



Statistics - PCR Algorithmic Performance

PCR algorithm performance update – Number of PRBs on MRC scope

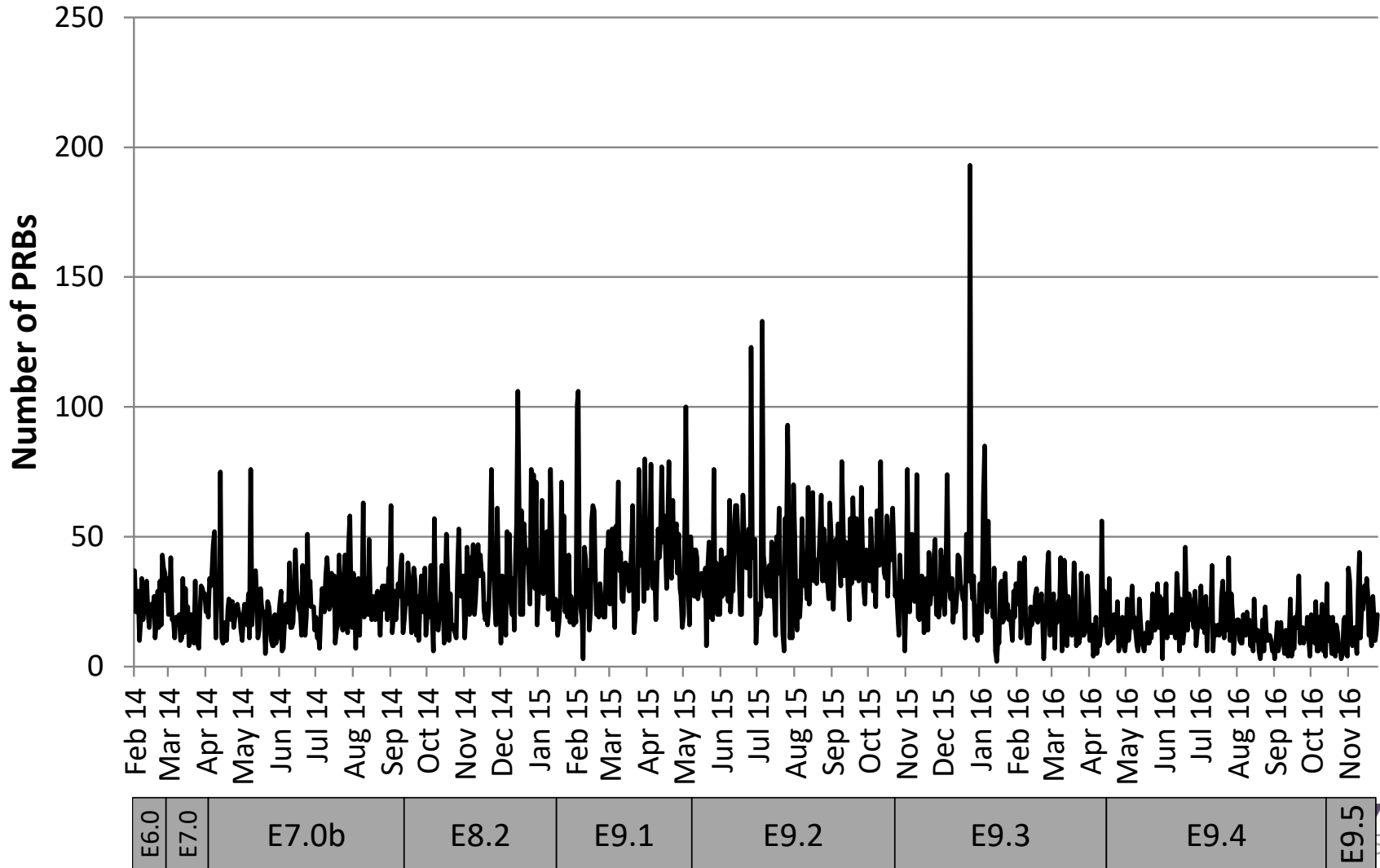
Daily average number of PRBs



Statistics - PCR Algorithmic Performance

PCR algorithm performance update – Number of PRBs (on MRC scope)

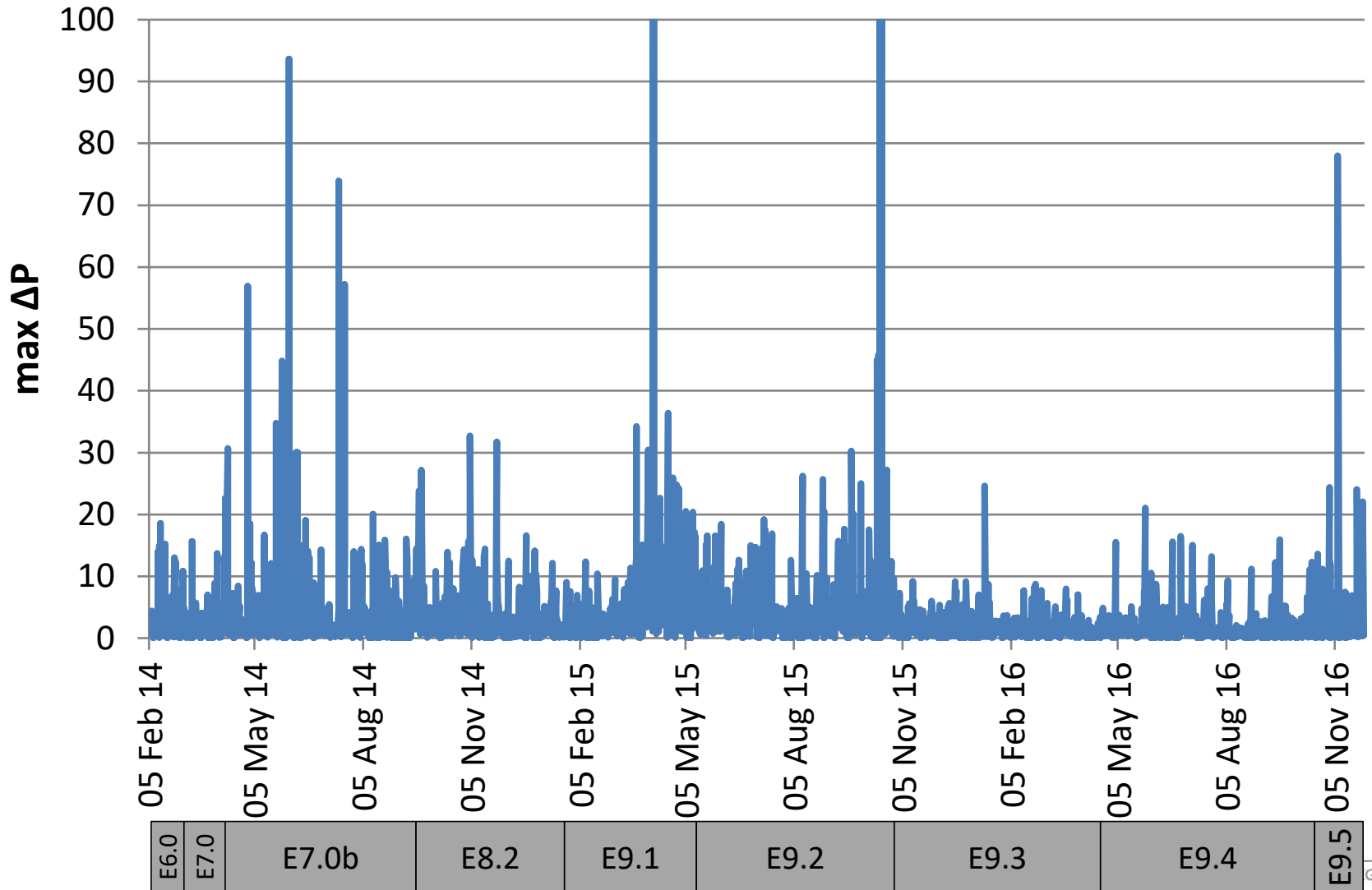
Number of PRBs



Statistics - PCR Algorithmic Performance

PCR algorithm performance update – Max ΔP (on MRC scope)

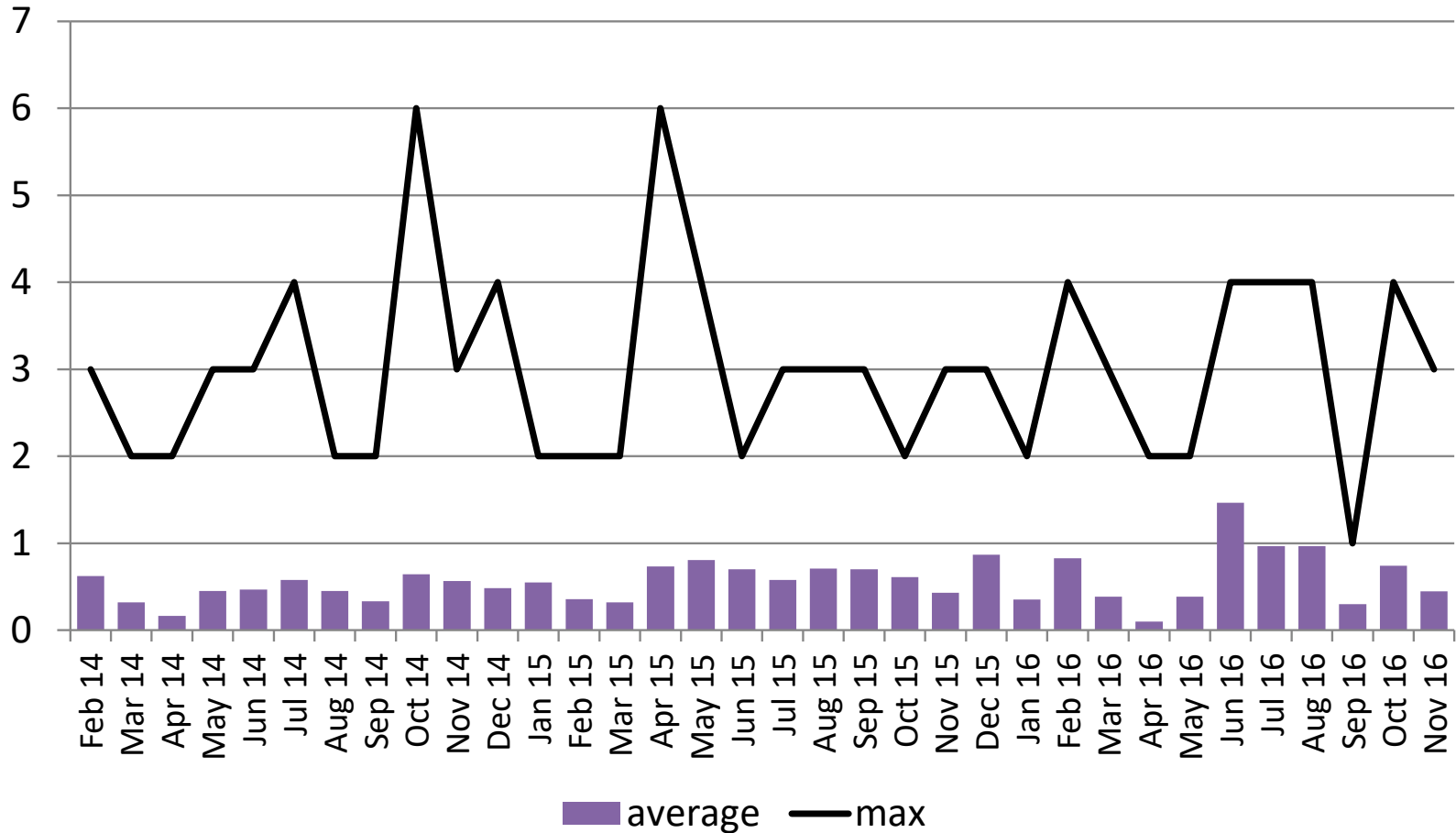
max ΔP



Statistics - PCR Algorithmic Performance

PCR algorithm performance update – PRMICs (on MRC scope)

Number of PRMICs

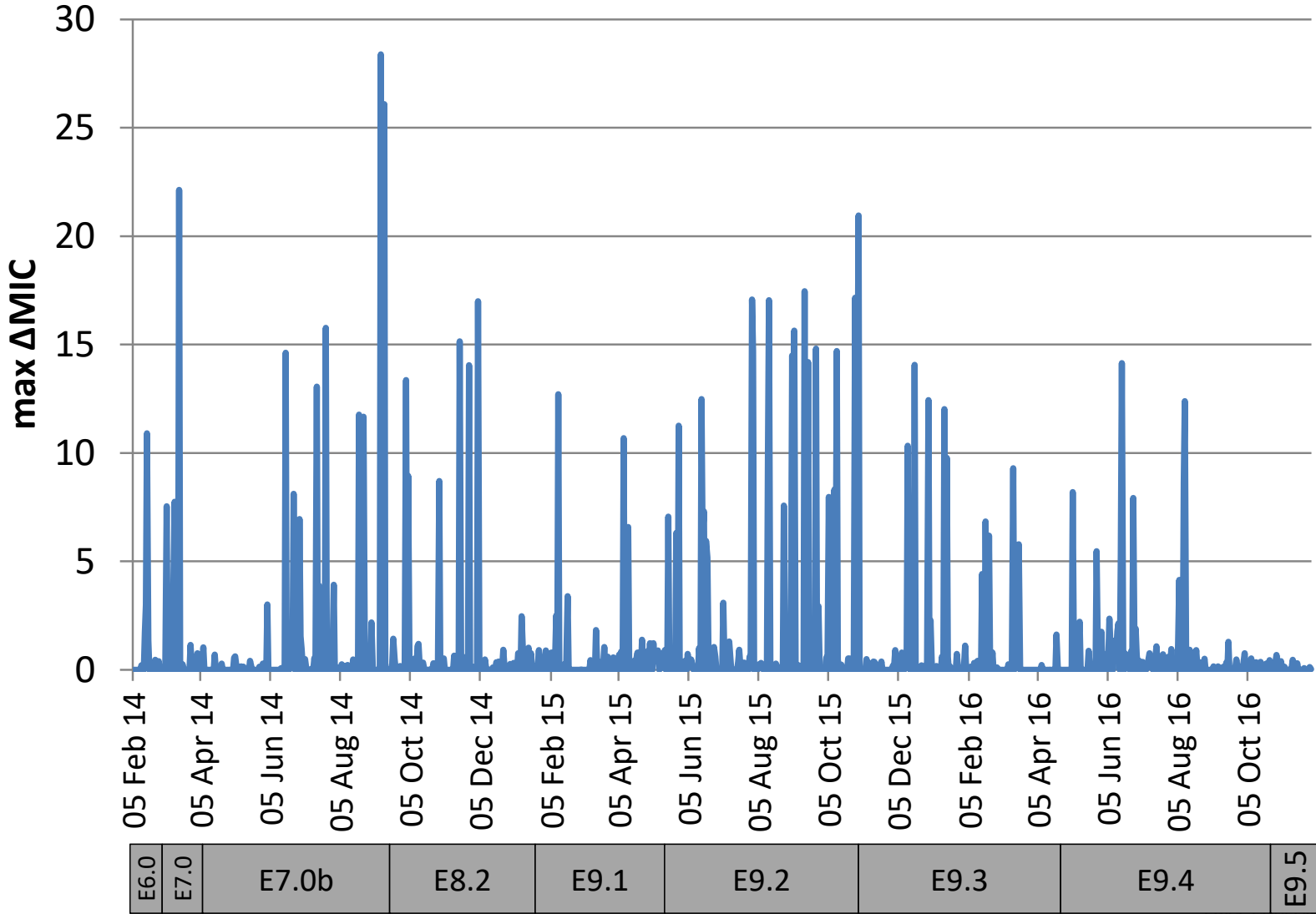


E6.0	E7.0	E7.0b	E8.2	E9.1	E9.2	E9.3	E9.4	E9.5
------	------	-------	------	------	------	------	------	------

Statistics - PCR Algorithmic Performance

PCR algorithm performance update – Max Δ MIC (on MRC scope)

max Δ MIC



Euphemia – Release Plan

In order to cope with the expanding perimeter and the increasing number and complexities of the products that are used, significant performance improvements have been and are continued to be implemented within Euphemia.

