

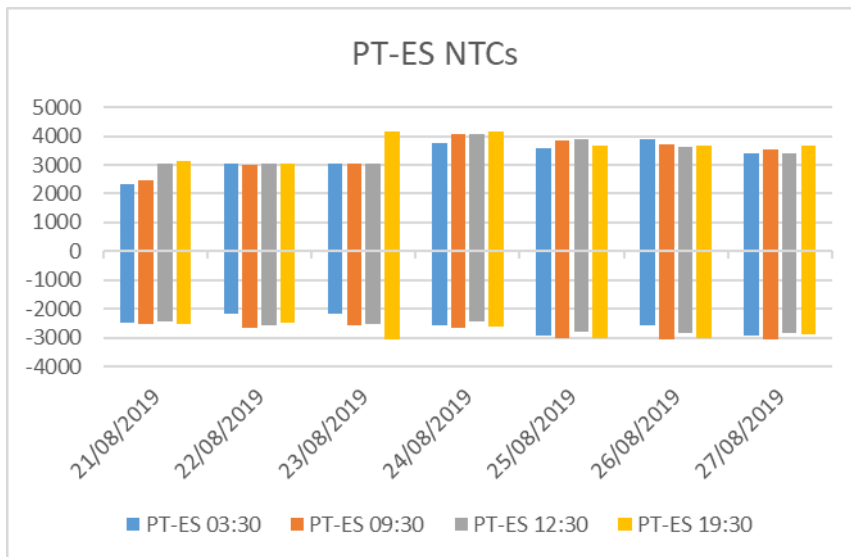
SWE Capacity Calculation report for Stakeholders

The elements in this report are based on ongoing experimentation with continuous tool improvement. The values/limiting elements can still evolve a bit until Go-Live.

This document reports results of the external parallel run from the 21/08/2019 to the 27/08/2019.

PT-ES NTCs

	NTC PT-ES															
	3:30				9:30				12:30				19:30			
	ES>PT		PT>ES		ES>PT		PT>ES		ES>PT		PT>ES		ES>PT		PT>ES	
	D-2	Weekly	D-2	Weekly	D-2	Weekly	D-2	Weekly	D-2	Weekly	D-2	Weekly	D-2	Weekly	D-2	Weekly
27/08/2019	3416	2900	2927	3000	3525	3750	3074	3000	3394	3750	2835	3000	3692	3750	2873	3000
26/08/2019	3904	2900	2587	3000	3704	3750	3049	3000	3632	3750	2860	3000	3686	3750	3021	3000
25/08/2019	3590	2900	2917	3000	3870	2900	3021	3000	3892	2900	2817	3000	3685	3750	3022	3000
24/08/2019	3767	2900	2588	3000	4051	3750	2664	3000	4083	3750	2424	3000	4145	3750	2612	3000
23/08/2019	3035	2700	2160	2600	3061	3550	2559	2500	3055	3550	2511	2500	4154	3550	3067	2500
22/08/2019	3035	2700	2160	2600	3013	2700	2655	2600	3025	2700	2594	2600	3053	3550	2506	2500
21/08/2019	2314	2700	2475	2600	2453	3550	2543	2500	3056	3550	2462	2500	3114	3550	2519	2500



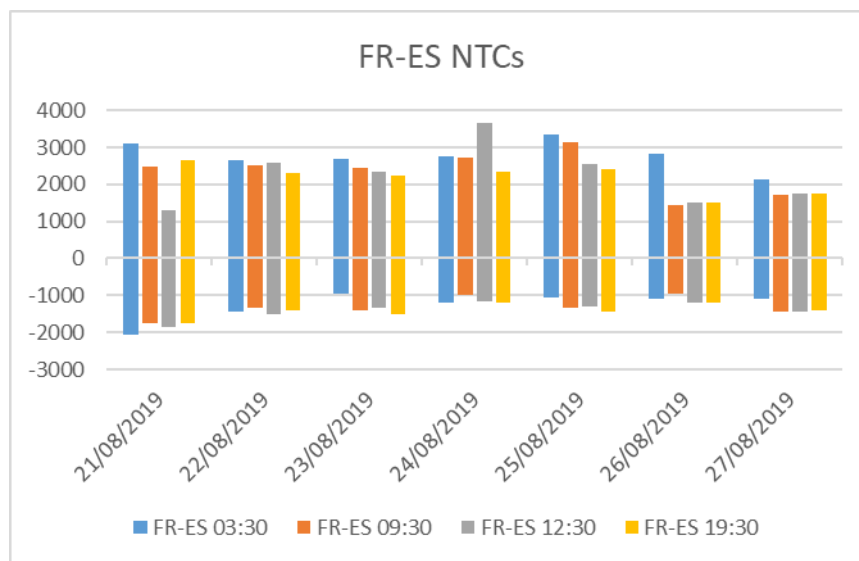
Comments:

No computation failed for the PT-ES border over this sixth week of External parallel run with generally good results. Please note that not all the hours have been validated by TSOs at this moment.

Please keep in mind that today only one voltage angle is monitored during the computation. Multiple voltage angle monitoring should be tackled before Go-Live.

FR-ES NTCs

	NTC FR-ES															
	3:30				9:30				12:30				19:30			
	ES>FR		FR>ES		ES>FR		FR>ES		ES>FR		FR>ES		ES>FR		FR>ES	
	D-2	Weekly	D-2	Weekly	D-2	Weekly	D-2	Weekly	D-2	Weekly	D-2	Weekly	D-2	Weekly	D-2	Weekly
27/08/2019	2150	2450	1100	1350	1700	2100	1450	1700	1750	2100	1450	1700	1750	2100	1400	1700
26/08/2019	2841	3000	1100	1350	1450	2100	950	1700	1500	2100	1200	1700	1500	2100	1200	1700
25/08/2019	3330	3000	1050	1350	3145	3000	1350	1350	2550	3000	1300	1350	2400	2400	1450	1700
24/08/2019	2759	3000	1200	1350	2729	2400	1000	1700	3654	2400	1150	1700	2350	2400	1200	1700
23/08/2019	2683	2900	950	1400	2450	1600	1400	1600	2350	1600	1350	1600	2250	1600	1500	1600
22/08/2019	2636	2900	1450	1400	2500	2900	1350	1400	2590	2900	1500	1400	2300	1600	1400	1600
21/08/2019	3099	2900	2050	1400	2473	1600	1750	1600	1300	1600	1850	1600	2659	1600	1750	1600



Comments:

No computation failed for the FR-ES border over this fifth week of External parallel run with generally good results. Please note that not all the hours have been validated by TSOs at this moment.

For the moment, the voltage is monitored in the computation but cannot limit the capacity. During External parallel run voltage will be monitored through the local validation of results by TSOs even if it is a common task.

Limiting elements PT-ES

Please find below the 5 limiting elements appearing more often over the period:

Critical Network Elements and Contingencies	Location CNE	Frequency
#1 L-400 kV Interconnector	PT-ES	83%
N-2 Interconnector 400 kV (ES-PT)		83%
#2 L-220 kV Interconnector	PT-ES	7%
N-1 Interconnector 220 kV (ES-PT)		3%
N-2 Interconnector 400 kV (ES-PT)		3%
#3 GLSK limitation	PT	5%
Basecase		5%
#4 L-220 kV	ES	2%
N-2 400 kV (ES-ES)		2%
#5 L-220 kV	PT	2%
N-1 220 kV (PT-PT)		2%

Limiting elements FR-ES

Please find below the 5 limiting elements appearing more often over the period:

Critical Network Elements and Contingencies	Location CNE	Frequency
#1 L-400 kV	FR-FR	43%
N-1 Power Plant (ES)		39%
N-1 Interconnector 400 kV (ES-FR)		2%
N-1 220 kV (FR-FR)		2%
#2 L-220 kV	FR-FR	21%
N-1 400 kV (FR-FR)		20%
N-1 220 kV (FR-FR)		1%
#3 L-220 kV Interconnector	FR-ES	21%
N-1 400 kV (FR-FR)		9%
N-1 220 kV (FR-FR)		7%
N-1 Interconnector 400 kV (FR-ES)		5%
#4 L-220 kV Interconnector	FR-ES	5%
N-1 400 kV (FR-FR)		4%
N-1 Power Plant (ES)		2%
#5 L-220 kV	ES-ES	2%
N-2 400 kV (ES-ES)		2%