

Business Requirements Specification
Corrigendum 1.0
17 March 2014

CONTENT

1	INTRODUCTION	4
2	VERSION 1 RELEASE 0 – 17TH OF MARCH 2014.....	4
7.19	TOTAL CAPACITY ALREADY ALLOCATED [12.1.C].....	5
11.2	PLANNED UNAVAILABILITY OF CONSUMPTION UNITS [7.1.A]	8
11.3	CHANGES IN ACTUAL AVAILABILITY OF CONSUMPTION UNITS [7.1.B].....	12

Note concerning wording used in this document:

The force of the following words is modified by the requirement level of the document in which they are used.

- **MUST:** This word, or the terms “REQUIRED” or “SHALL”, means that the definition is an absolute requirement of the specification.
- **MUST NOT:** This phrase, or the phrase “SHALL NOT”, means that the definition is an absolute prohibition of the specification.
- **SHOULD:** This word, or the adjective “RECOMMENDED”, means that there may exist valid reasons in particular circumstances to ignore a particular item, but the full implications must be understood and carefully weighed before choosing a different course.
- **SHOULD NOT:** This phrase, or the phrase “NOT RECOMMENDED”, means that there may exist valid reasons in particular circumstances when the particular behaviour is acceptable or even useful, but the full implications should be understood and the case carefully weighed before implementing any behaviour described with this label.

MAY: This word, or the adjective «OPTIONAL», means that an item is truly optional. One vendor may choose to include the item because a particular marketplace requires it or because the vendor feels that it enhances the product while another vendor may omit the same item. An implementation which does not include a particular option **MUST** be prepared to interoperate with another implementation which does include the option, though perhaps with reduced functionality. In the same vein an implementation which does include a particular option **MUST** be prepared to interoperate with another implementation which does not include the option (except, of course, for the feature the option provides.)

Diagrams are for illustrative purposes only and do not constitute fully detailed definition of data structures.

1 INTRODUCTION

The objective of this corrigendum is to correct anomalies that have been identified in the business requirements specification during the course of the design and implementation of the central transparency platform.

This document will be updated to resolve inconsistencies and fill any gaps that were not identified during the analysis and review that preceded the drafting of the business requirements specification and other documents in the manual of procedures. More versions of this document may be issued as further issues are detected by the project implementing the central transparency platform at the ENTSO-E secretariat and by local projects at data providers.

Local projects shall therefore refer to the business requirements specification approved by ENTSO-E Market Committee in March 2014 and take into account the changes identified in this corrigendum.

With each update of this corrigendum a news flash will be published on the ENTSO-E web site along with the latest version of this document.

2 VERSION 1 RELEASE 0 – 17TH OF MARCH 2014

Regarding article 12.1.c of the Regulation on the publication of total capacity already allocated, calculations on the central transparency platform taking into account earlier allocations and explicit resales or UIOSI (use it or sell it) are not deemed as feasible. The Market Information and Transparency Working Group has therefore decided that the sender (i.e. the capacity allocator), will make all calculations and submit a single document to the central transparency platform. Platform will publish whatever is being submitted, without making any calculations.

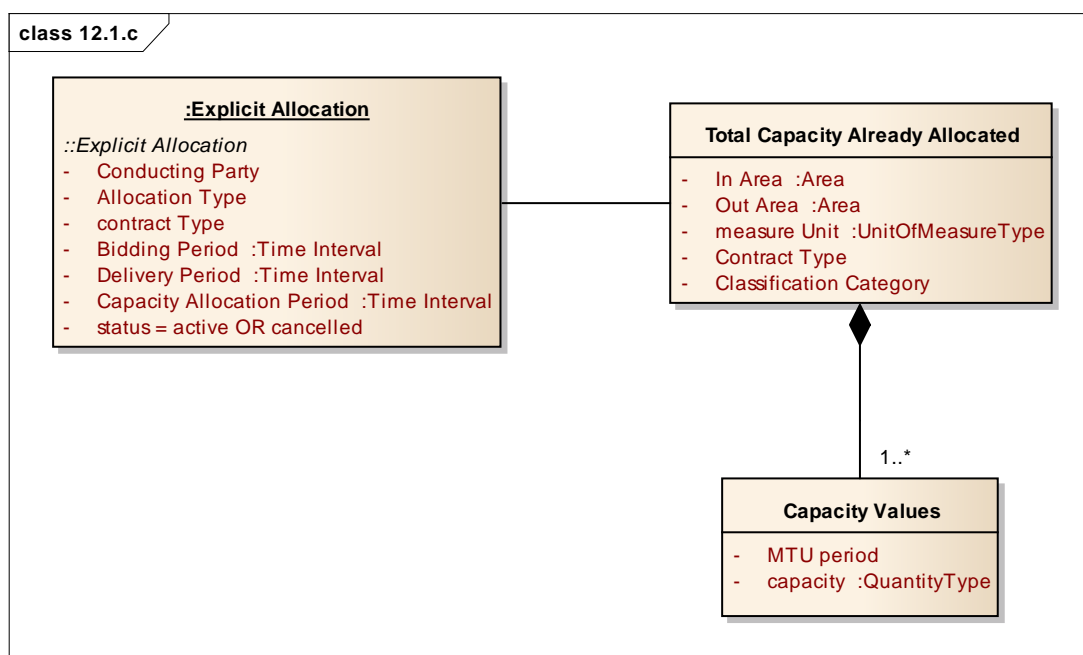
Regarding article 7 of the Regulation on information relating to the unavailability of consumption units, some Data Providers may have a preference to submit to the central transparency platform the unavailable capacity rather than the available capacity. The Transparency Platform Coordinators sub-group has therefore decided that both submission modes shall be supported.

Below please find the corrected chapters 7.19, 11.2 and 11.3 of the BRS.

7.19 TOTAL CAPACITY ALREADY ALLOCATED [12.1.c]

7.19.1 DATA DESCRIPTION

This item can be described by the following class diagram:



The document shall contain data related to exactly one auction instance. The total capacity already allocated is described by In and Out Areas and per Contract Type and Classification Category, with one capacity value in measure Unit for each Market Time Unit period within a time interval corresponding to the auction’s Delivery Period.

This data item is relevant for explicit allocations only. It is not applicable to allocations of yearly capacity products since in that case there is no previously allocated capacity.

Example: Before a daily base auction, a single document shall be submitted to the platform, containing the total capacity already allocated, taking into account earlier allocations (i.e. yearly, monthly and weekly auctions) and explicit resales or use it or sell it (UIOSI). Capacity values shall be provided for each MTU period of the delivery period of the daily auction. Contract Type of document is Daily and Classification Category is Base.

7.19.2 PRE-CONFIGURATION

For each Explicit Allocation instance (except for yearly), the data item “Total Capacity Already Allocated” shall be expected by the transparency platform. Refer to chapter 7.26.1.2 for details on the configuration of a capacity allocation.

- For each Explicit Allocation instance, the unique allowed data provider is the one indicated in the capacity allocation configuration. Refer to chapter 7.26.1.3 for details.

- For a given allocation, the submission deadline depends on the Contract Type (monthly, weekly, etc.) and is the same as for the offered transfer capacity [11.1], refer to sections 7.10.2 through 7.11.2.

7.19.3 ASSUMPTIONS

Data providers have performed all calculations, taking into account earlier allocations and explicit resales or use it or sell it (UIOSI). Platform will not perform any calculation.

7.19.4 INTEGRATION

The data provider shall be consistent with the configuration of the capacity allocation, refer to chapter 7.26.1.3 for details

The time interval described in the document shall be complete (e.g. a whole day for a Daily auction)

7.19.5 MONITORING

For a given instance of an Explicit Allocation (except for yearly), the transparency platform shall monitor that the data item "Total Capacity Already Allocated" is submitted.

Submission deadlines depend on the auction as explained in chapter 7.19.2.

7.19.6 PROCESSING

No processing performed on this data item.

7.19.7 PUBLICATION

7.19.7.1 PUBLICATION BEHAVIOUR

Standard publication behaviour applies.

7.19.7.2 FILTERING AND SORTING CRITERIA

Data shall be visually accessed by selecting the following:

- Contract Type (Selection is Mandatory)
- Country (selection is optional: If selected, Areas will be filtered to include only those that partially or completely cover the Country)

- Areas couple (Selection is Mandatory)
- Direction (both by default) (Selection is Mandatory)
- Time window (Start and End date) (Selection is mandatory)

7.19.7.3 DISPLAY

This data shall be displayed in the following section:

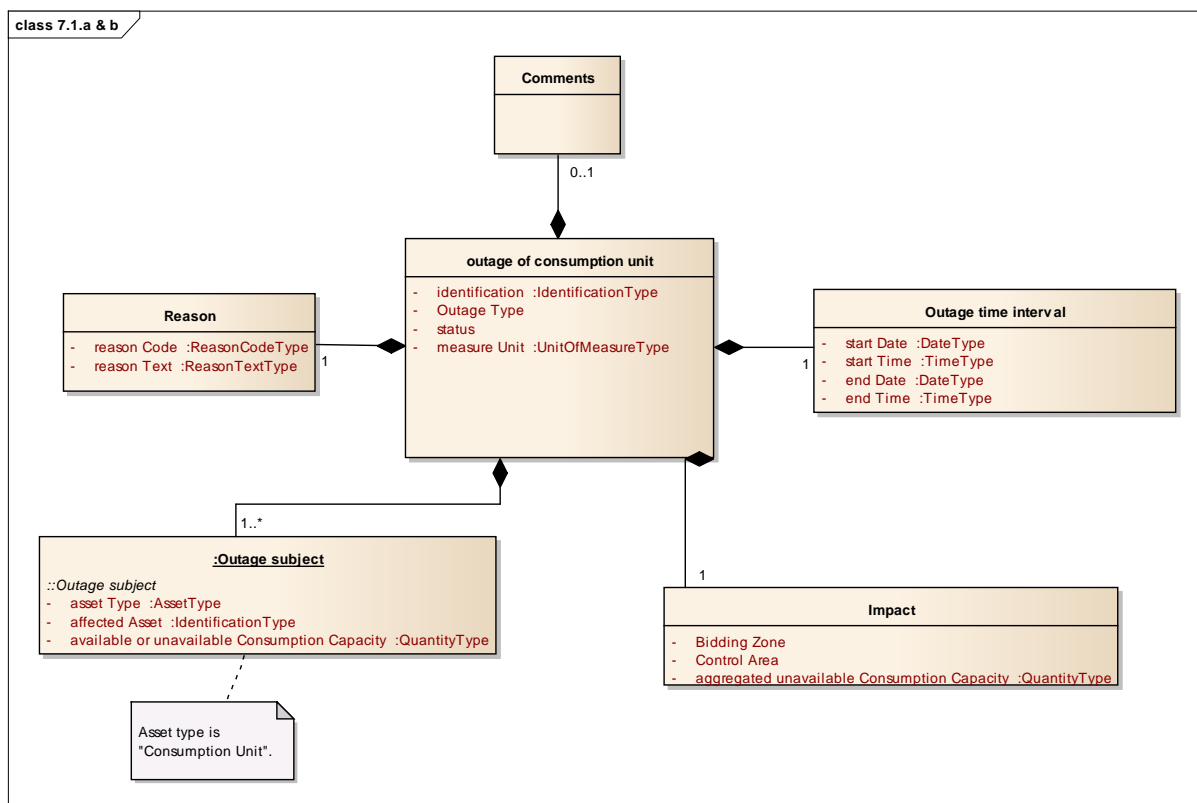
- Explicit Auctions / Total Capacity Already Allocated

The following attributes of data shall be displayed:

- Title
- Areas name
- Contract Type
- Classification Category
- Time window
- Measurement Unit
- For each MTU Period within the time window, the total capacity already allocated. This is repeated per direction.

11.2 PLANNED UNAVAILABILITY OF CONSUMPTION UNITS [7.1.A]

11.2.1 DATA DESCRIPTION



A planned unavailability on consumption unit is described by the following:

- An identification of the outage, having a status (active or cancelled)
- Bidding Zone and Control Area
- The outage subject, defined by the asset Type (Consumption Unit) and its unique code
- The estimated unavailability time interval
- For each outage subject, the available or unavailable consumption capacity in Measure Unit
- The reason for the planned unavailability
- Optionally, a free-text comment may be provided
- Measure Unit is fixed to megawatt (MW)

- Type of outage is “planned”

11.2.2 PRE-CONFIGURATION

For each data provider, an indicator whether available or unavailable capacity is being submitted.

11.2.3 ASSUMPTIONS

Unavailability of consumption units is submitted per Bidding Zone and Control Area.

For a given unavailability, there will be only one data provider.

The transparency platform shall calculate unavailable capacity in bidding zone per market time unit, based on the submitted available capacity values.

Available consumption capacity is static during the outage time interval.

11.2.4 INTEGRATION

- The outage subject (asset) described in the document shall be recognised by the transparency platform
- Data provider shall be consistent with the identified outage subject.
- The Bidding Zone and Control Area described in the document shall be recognised by the transparency platform
- Data provider shall be consistent with the identified Bidding Zone and Control Area

11.2.5 PROCESSING

Unavailability marked for cancellation shall be marked as cancelled in the transparency platform database.

The transparency platform establishes unavailable consumption capacity per MTU period based on the submitted available or unavailable capacity during the outage time interval and the installed capacity of the Consumption Unit (as recorded per chapter 11.12). In case MTU period only partially coincides with outage start or end time, the submitted available consumption capacity will apply also for those MTU periods.

The transparency platform aggregates the unavailable consumption capacity in each Bidding Zone and Country by Market Time Unit period. A single value per Country, Bidding Zone and MTU period shall be calculated, taking all planned unavailability into account.

Likewise, a single value shall be established per Country, Bidding Zone and MTU period taking all changes in actual availability into account (refer to chapter 11.3 regarding changes in actual availability of consumption units).

Finally, a grand total per Country, Bidding Zone and MTU period shall be calculated, taking both planned unavailability and changes in actual availability into account.

The unavailability marked for cancellation is marked as such in the transparency platform database and not taken into account in the aggregation calculation.

Pre-configuration [C-OTG-9] will be used to aggregate values per Country.

11.2.6 PUBLICATION

11.2.6.1 PUBLICATION BEHAVIOUR

An outage marked for cancellation at submission shall be accessible on the transparency platform but marked explicitly as cancelled.

11.2.6.2 FILTERING AND SORTING CRITERIA

Data shall be visually accessed by selecting the following:

For all options:

- Date or date range (selection is mandatory)
- Country or Bidding Zone (selection is mandatory – if Country is selected, pre-configuration [C-OTG-9] will be used to identify the corresponding Control Area and filter Outages accordingly)
- Type of unavailability: planned, actual or both, selection is optional

Unavailability for which time interval is either completely or partially on the selected date (or possibly date range) will be displayed.

11.2.6.3 DISPLAY

This data shall be displayed in the following section:

- **Load / Unavailability**

The following attributes of data shall be displayed:

- Title
- Measure Unit

- MTU

For each outage that falls within the selected date or date range, the following details are displayed:

- Status (active or cancelled)
- Type of unavailability (planned or actual)
- The reason for the outage
- Country or Bidding Zone
- Start date and time
- End date and time
- The aggregated unavailable consumption capacity per MTU period, by country or Bidding Zone: Separate values for planned unavailability, changes in actual availability and a grand total

11.3 CHANGES IN ACTUAL AVAILABILITY OF CONSUMPTION UNITS [7.1.B]

11.3.1 DATA DESCRIPTION

Data description is almost identical to data item “Planned unavailability of consumption units [7.1.a]”, refer to chapter 11. The differences are:

- outage type is “actual”
- status is always “active”
- not more than one outage subject is permitted

11.3.2 PRE-CONFIGURATION

Same pre-configuration as for planned unavailability of consumption units [7.1.a] applies to this data item, refer to chapter 11.2.2.

11.3.3 ASSUMPTIONS

Unavailability of consumption units is submitted per Bidding Zone and Control Area.

For a given unavailability, there will be only one data provider.

11.3.4 INTEGRATION

- The document date and time of the submitted document should be posterior to the start date and time of the unavailability. This will trigger a warning only.

All other validations are the same as for planned outages of consumption units, refer to chapter 11.2.4.

11.3.5 PROCESSING

Same processing as for planned outages of consumption units, refer to chapter 11.2.5.

11.3.6 PUBLICATION

11.3.6.1 PUBLICATION BEHAVIOUR

No specific publication behaviour applies to this data item.

11.3.6.2 FILTERING AND SORTING CRITERIA

Data shall be displayed together with planned unavailability on the same page. Filter and sorting criteria are the same as for planned unavailability. It shall be possible to use type of unavailability (planned or actual) as a criterion. Refer to section 11.2.6.2.

11.3.6.3 DISPLAY

Data shall be displayed together with planned unavailability on the same page. The type of unavailability (planned or actual) shall be displayed. Refer to section 11.2.6.3.