



European Network of
Transmission System Operators
for Electricity

ENTSO-E
CGMA DATA EXCHANGES
IMPLEMENTATION GUIDE

2018-11-08

APPROVED DOCUMENT

VERSION 2.0

2

Table of Contents

3	1	Scope.....	8
4	2	Terms and Definitions	8
5	3	The common grid model alignment (CGMA) business processes.....	11
6	3.1	Overview	11
7	3.2	Overall business context.....	11
8	3.3	Use cases.....	12
9	3.4	Document exchange processes	13
10	3.4.1	Overview	13
11	3.4.2	Submit pre-processing data	15
12	3.4.3	Send escalation notification on pre-processing data.....	16
13	3.4.4	Send input data and CGMA results	16
14	3.4.5	Request substitute data	17
15	3.4.6	Request CGMA results	18
16	3.4.7	Submit pole split and loss calculation data	19
17	3.4.8	Send escalation notification on pole split and loss calculation data	19
18	3.4.9	Send PSLC results	19
19	3.4.10	Request PSLC results	19
20	4	General rules for document exchange.....	20
21	4.1	General rules.....	20
22	4.2	Notes about using StatusRequest_MarketDocument in CGMA document exchange.....	22
24	4.3	Notes about using ProblemStatement_MarketDocument as an escalation notification.....	23
26	4.4	Notes about using Reporting_MarketDocument to submit pole split and loss calculation data	24
28	5	Using the ReportingInformation_MarketDocument in CGMA	25
29	5.1	Overview.....	25
30	5.2	Rules governing ReportingInformation_MarketDocument to submit pre- processing data.....	25
32	5.3	Rules governing ReportingInformation_MarketDocument to reply substitute data	28
34	5.4	Rules governing ReportingInformation_MarketDocument to send input data and CGMA results	29
36	5.5	Rules governing ReportingInformation_MarketDocument to reply CGMA results	32
38	5.6	Rules governing ReportingInformation_MarketDocument to send PSLC results	33
39	5.7	Rules governing ReportingInformation_MarketDocument to reply PSLC results.....	35
40	5.8	Additional rules governing the use of TimeSeries	37
41	5.9	ReportingInformation_MarketDocument XML schema.....	37

42	6	References.....	38
43		List of figures	
44		Figure 1 – Use cases	12
45		Figure 2 – Sequence diagram for submission of PPD.....	14
46		Figure 3 – Sequence diagram for submission of PSLCD	15
47		Figure 4 – Sequence diagram for request substitute data.....	17
48		Figure 5 – Sequence diagram for request CGMA results	18
49		Figure 6 – Sequence diagram for request PSLC results.....	20
50		List of tables	
51		Table 1 – Actor labels and descriptions.....	12
52		Table 2 – CGMA data exchange.....	13
53		Table 3 – Time series of pre-processing data.....	15
54		Table 4 – Time series of input data	16
55		Table 5 – Time series of CGMA results.....	16
56		Table 6 – Time series of substitute data	18
57		Table 7 – Time series of CGMA results.....	18
58		Table 8 – Time series of pole split and loss calculation data	19
59		Table 9 – Time series of PSLC	19
60		Table 10 – Time series of PSLC	20
61		Table 11 – List of documents for CGMA process exchanges.....	21
62		Table 12 – StatusRequest_MarketDocument header values.....	22
63		Table 13 – StatusRequest_MarketDocument AttributeInstanceComponent values.....	22
64		Table 14 – ProblemStatement_MarketDocument header values	23
65		Table 15 – Reporting_MarketDocument header	24
66		Table 16 – Reporting_MarketDocument.TimeSeries elements.....	24
67		Table 17 – ReportingInformation_MarketDocument header	25
68		Table 18 – ReportingInformation_MarketDocument.TimeSeries elements.....	27
69		Table 19 – ReportingInformation_MarketDocument header	28
70		Table 20 – ReportingInformation_MarketDocument.TimeSeries elements.....	28
71		Table 21 – ReportingInformation_MarketDocument header	29
72		Table 22 – ReportingInformation_MarketDocument.TimeSeries elements.....	30
73		Table 23 – ReportingInformation_MarketDocument header	32
74		Table 24 – ReportingInformation_MarketDocument.TimeSeries elements.....	32
75		Table 25 – ReportingInformation_MarketDocument header	33
76		Table 26 – ReportingInformation_MarketDocument.TimeSeries elements.....	34
77		Table 27 – ReportingInformation_MarketDocument header.....	35

78 Table 28 – ReportingInformation_MarketDocument.TimeSeries elements..... 36
79

80 **Copyright notice:**

81 **Copyright © ENTSO-E. All Rights Reserved.**

82 This document and its whole translations may be copied and furnished to others, and
83 derivative works that comment on or otherwise explain it or assist in its implementation may
84 be prepared, copied, published and distributed, in whole or in part, without restriction of any
85 kind, provided that the above copyright notice and this paragraph are included on all such
86 copies and derivative works. However, this document itself may not be modified in any way,
87 except for literal and whole translation into languages other than English and under all
88 circumstances, the copyright notice or references to ENTSO-E may not be removed.

89 This document and the information contained herein is provided on an "as is" basis.

90 **ENTSO-E DISCLAIMS ALL WARRANTIES, EXPRESS OR IMPLIED, INCLUDING BUT NOT**
91 **LIMITED TO ANY WARRANTY THAT THE USE OF THE INFORMATION HEREIN WILL NOT**
92 **INFRINGE ANY RIGHTS OR ANY IMPLIED WARRANTIES OF MERCHANTABILITY OR**
93 **FITNESS FOR A PARTICULAR PURPOSE.**

94 **Maintenance notice:**

95 **This document is maintained by the ENTSO-E WG EDI. Comments or remarks are to be**
96 **provided at EDI.Library@entsoe.eu**

97

Revision History

Version	Release	Date	Comments
1	0	2016-12-07	Approved by MC
2	0	2018-11-08	Enhancements to support external pole splitting and loss calculation process Corrections Approved by MC.

98

99

NOTE CONCERNING WORDING USED IN THIS DOCUMENT

100 The force of the following words is modified by the requirement level of the document in which
101 they are used.

102 **MUST:** This word, or the terms “REQUIRED” or “SHALL”, means that the definition is an
103 absolute requirement of the specification.

104 **MUST NOT:** This phrase, or the phrase “SHALL NOT”, means that the definition is an
105 absolute prohibition of the specification.

106 **SHOULD:** This word, or the adjective “RECOMMENDED”, means that there may exist valid
107 reasons in particular circumstances to ignore a particular item, but the full implications must
108 be understood and carefully weighed before choosing a different course.

109 **SHOULD NOT:** This phrase, or the phrase “NOT RECOMMENDED”, means that there may
110 exist valid reasons in particular circumstances when the particular behaviour is acceptable or
111 even useful, but the full implications should be understood, and the case carefully weighed
112 before implementing any behaviour described with this label.

113 **MAY:** This word, or the adjective “OPTIONAL”, means that an item is truly optional. One
114 vendor may choose to include the item because a particular marketplace requires it or
115 because the vendor feels that it enhances the product while another vendor may omit the
116 same item. An implementation which does not include a particular option **MUST** be prepared
117 to interoperate with another implementation which does include the option, though perhaps
118 with reduced functionality. In the same vein an implementation which does include a particular
119 option **MUST** be prepared to interoperate with another implementation which does not include
120 the option (except, of course, for the feature the option provides.)

121 **DEPRECATED:** this word means that a previously permitted entity should no longer be used
122 in new implementations as in a future release the object in question may be suppressed.

123

124 1 Scope

125 The scope of this implementation guide is to describe how to implement the data exchanges
126 related to the Common Grid Model Alignment (CGMA) platform. These data exchanges can be
127 split in two larger parts: the first is the core CGMA process ending with the provision of
128 balanced netted area positions and balanced gross flows on all (unsplit) DC lines. The second
129 supports the external pole splitting and loss calculation for TSOs connected to DC lines
130 linking different synchronous areas.

131 2 Terms and Definitions

132 **CGM:** Common Grid Model

133 **CGMA:** Common Grid Model Alignment; a process that ensures the availability of a set of
134 balanced netted area positions and balanced DC flows for all optimisation areas covered for
135 those target time-horizons for which CGMs are built but for which market schedules are not
136 available. CGMA involves applying a set of rules and methods, notably including the CGMA
137 algorithm, to the CGMA input data in order to obtain the CGMA output data (which include the
138 CGMA results).

139 **CGMA input data:** For the purposes of this implementation guide, the terms "CGMA input
140 data" and "PPD" can be used interchangeably.

141 **CGMA output data:** The CGMA output data have three components: 1. the CGMA results; 2.
142 the CGMA input data originally sent to the CGMA platform; 3. the substituted and / or modified
143 CGMA input data (if applicable).

144 **CGMA results:** The CGMA results are the outcome of applying the CGMA algorithm to the
145 CGMA input data (the PPD) and consist of, for each relevant optimisation area and for each
146 relevant scenario, the following elements:

147 --balanced netted area position

148 --balanced gross flows on all DC lines (where applicable)

149 Also, part of the CGMA results are

150 --indicative AC flows per electrical border

151 --AC net positions

152 CGMA results are a subset of the CGMA output data.

153 **CGMA target time-horizon:** The time period for which CGMA results are to be obtained. In
154 the case of the (D-2) target time-horizon, for example, this will typically encompass the
155 twenty-four individual hours (respectively twenty-three or twenty-five for daylight saving) from
156 00:00h two days after the day on which the CGMA calculations are run until 24:00h of that
157 day. The CGMA target time-horizon will thus typically encompass multiple scenarios.

158 **CGMA platform:** The IT System which, among other tasks, runs the CGMA algorithm.

159 **Optimisation area:** Basic geographical reference unit for the CGMA process. CGMA input
160 data are provided on the level of optimisation areas and so are the CGMA results. Each
161 optimisation area corresponds exactly to a geographical area for which an individual grid
162 model is prepared; i.e., there is a one-to-one correspondence between optimisation areas and
163 IGMs.

164 **CGMA area:** The CGMA area corresponds to the CGM area. The CGM area is the set of (i)
165 bidding zones whose TSOs contribute their individual grid model (IGM) to the CGM plus (ii)
166 the interconnections linking these bidding zones with bidding zones that do not contribute an
167 IGM to the CGM (i.e., are not part of the CGM Area). Note that in the context of CGMA the
168 term "optimisation area" (rather than "bidding zone") is used. [1] explains the relevant area
169 concepts.

170 **Netted area position:** The term "netted area position" (which is used in, for example, the
171 ENTSO-E RG CE Schedule Reporting Process Implementation Guide; version for approval as
172 of 2016-08-10) corresponds to the term "net position" used in [1]. The net position is defined
173 as the "the netted sum of electricity exports and imports for each market time unit for a
174 bidding zone" (Article 2(5) of Regulation 2015/1222). Implicit in this definition is that a "net
175 position" (as opposed to an "AC net position") always comprises both AC and DC flows into
176 and out of a bidding zone. Note that in the context of the CGMA platform and the CGMA
177 algorithm, the term "optimisation area" (rather than "bidding zone") is used. [1] explains the
178 relevant area concepts. The "netted area position" (net position) is expressed in the unit MW.
179 Note that a number of additional concepts are derived from the concept of "netted area
180 position"; namely the preliminary "netted area position"; the "netted area AC position" (see
181 below), the absolute maximum netted area position, the absolute minimum netted area
182 position, and the balanced netted area position.

183 **Netted area AC position:** The term "netted area AC position" (which is used in, for example,
184 the ENTSO-E RG CE Schedule Reporting Process Implementation Guide; version for
185 approval as of 2016-08-10) corresponds to the term "AC net position" used in [1]. The "netted
186 area AC position" is obtained by subtracting from the "netted area position" (net position) for
187 an optimisation area all DC flows into and out of that optimisation area.

188 **Feasibility range:** A set of two figures expressed in the unit MW that, together with the
189 preliminary netted area position, indicate the range of balanced netted area positions (weakly
190 greater than and (weakly) smaller than the preliminary netted area position that a TSO
191 accepts ex ante for a given scenario.

192 **DC flow:** Flow on a DC line (i.e., direct current line). Any DC flow – i.e., including both
193 preliminary and balanced DC flows – can be stated in terms of the flow at the exporting end of
194 the DC line or the importing end of the DC line. The difference between the export and the
195 import value corresponds to losses on the DC line. DC flows are expressed in the unit MW. In
196 the PPD all DC flows are provided as gross values (flow at the exporting end) for unsplit links
197 whereas the PSLCD contain split poles (where applicable) and implicit losses (when using
198 virtual scheduling areas).

199 **PPD:** Pre-processing data. A set of data that serve as input for the CGMA algorithm. For each
200 scenario and for each optimisation area a separate set of pre-processing data needs to be
201 provided. The following types of data make up the pre-processing data:

202 --preliminary netted area position (mandatory)

203 --feasibility range (mandatory)

204 --preliminary gross DC flows (mandatory for optimisation areas linked to another optimisation
205 area in a different synchronous area by DC line) at the exporting end

206 --maximum gross DC flows (export/import) (mandatory for optimisation areas linked to another
207 optimisation area in a different synchronous area by DC line) at the exporting end

208 --absolute minimum and/or maximum netted area position (optional)

209 **PPD gate closure time:** The PPD gate closure time is that time after which the CGMA
210 platform will, in principle, no longer accept pre-processing data for a given set of scenarios.
211 [1] states the PPD gate closure times.

212 **PSLC:** Pole split and loss calculation. Refers to the process of external pole split and loss
213 calculation after the CGMA platform has delivered balanced gross DC flows.

214 **PSLCD:** Pole split and loss calculation data. Based on the results of the CGMA optimisation
215 all TSOs connected to DC lines linking different synchronous areas will have to submit
216 externally calculated flows for their DC lines (on the level of single poles if applicable).
217 Depending on the way the TSO has modelled the DC line in its individual grid model the
218 results might contain both gross and net values for DC flows (when using the simplified
219 modelling approach) or not (when using the embedded modelling approach).

220 PSLCD gate closure time: The PSLCD gate closure time is that time after which the CGMA
221 platform will, in principle, no longer accept pole split and loss calculation data for a given set
222 of scenarios. [1] states the PSLCD gate closure times.

223 PSLC results: After validation of the PSLCD by the CGMA platform the PSLC results will be
224 provided. They contain the netted area AC position and values for each DC line (on the level
225 of split poles if applicable). Depending on the way the TSO has modelled the DC line in its
226 individual grid model the results might contain both gross and net values for DC flows (when
227 using the simplified modelling approach) or not (when using the embedded modelling
228 approach).

229 **RSC:** Regional Security Coordinator. An organisation providing certain services for and/or on
230 behalf of TSOs. RSCs are also involved in the CGMA business processes and, in this context,
231 are referred to as "Alignment Agents" in [1].

232 **Substitute data:** If one or more elements of the PPD are missing at PPD gate closure time,
233 the missing elements are replaced by substitute (pre-processing) data.

234

235 3 The common grid model alignment (CGMA) business processes

236 1. Overview

237 The business requirements of CGMA, refer to reference [1], lead to several use cases of data
238 exchange which are described in this chapter. Each use case is supported by one or more
239 document exchange processes, as it is described in later subsections of this chapter.

240 2. Overall business context

241 CGMA provides, for all relevant target time-horizons, a set of balanced netted area positions
242 and balanced gross DC flows which are consistent for the entire CGMA area. It does so by
243 applying the CGMA algorithm to the pre-processing data (CGMA input data).

244 For each scenario and for each optimisation area a separate set of pre-processing data needs
245 to be provided. The following types of data make up the pre-processing data:

- 246 • preliminary netted area position (mandatory)
- 247 • feasibility range (mandatory)
- 248 • preliminary gross DC flows (mandatory for optimisation areas linked to another
249 optimisation area in a different synchronous area by DC line) at the exporting end
- 250 • maximum gross DC flows (export/import) (mandatory for optimisation areas linked to
251 another optimisation area in a different synchronous area by DC line) at the exporting
252 end
- 253 • absolute minimum and/or maximum netted area position (optional)

254 PPD are created by TSOs or by parties acting on behalf of TSOs and are collected by the
255 CGMA platform. There is a gate closure time after which the CGMA platform will, in principle,
256 no longer accept pre-processing data for a given set of scenarios. ("PPD gate closure time").

257 The set of PPD is complete when PPD are available for all optimisation areas (i.e., the entire
258 CGMA area). The CGMA platform may request substitute data from the Pan European
259 Verification Function (PEVF) if PPD are missing after PPD gate closure time. Substitute data
260 then serve to complete the set of PPD.

261 The CGMA platform calculates the CGMA results, which consist of a set of

- 262 • balanced netted area positions;
- 263 • balanced netted area AC positions;
- 264 • indicative AC flows per electrical border;
- 265 • balanced gross DC flows at the exporting end.

266 The CGMA results can be used by a TSO or by a party acting on behalf of a TSO to update an
267 individual grid model.

268 For TSOs connected to DC lines linking different synchronous areas the core CGMA process
269 is followed by an additional set of activities called the external pole splitting and loss
270 calculation.

271 After the CGMA platform has provided the CGMA results these TSOs will externally calculate
272 the flows on their DC lines by splitting the DC lines into single poles (if applicable) and
273 calculate the losses. The results from this calculation will then be sent back to the CGMA
274 platform by respecting the PSLCD gate closure time and be validated by the CGMA platform.

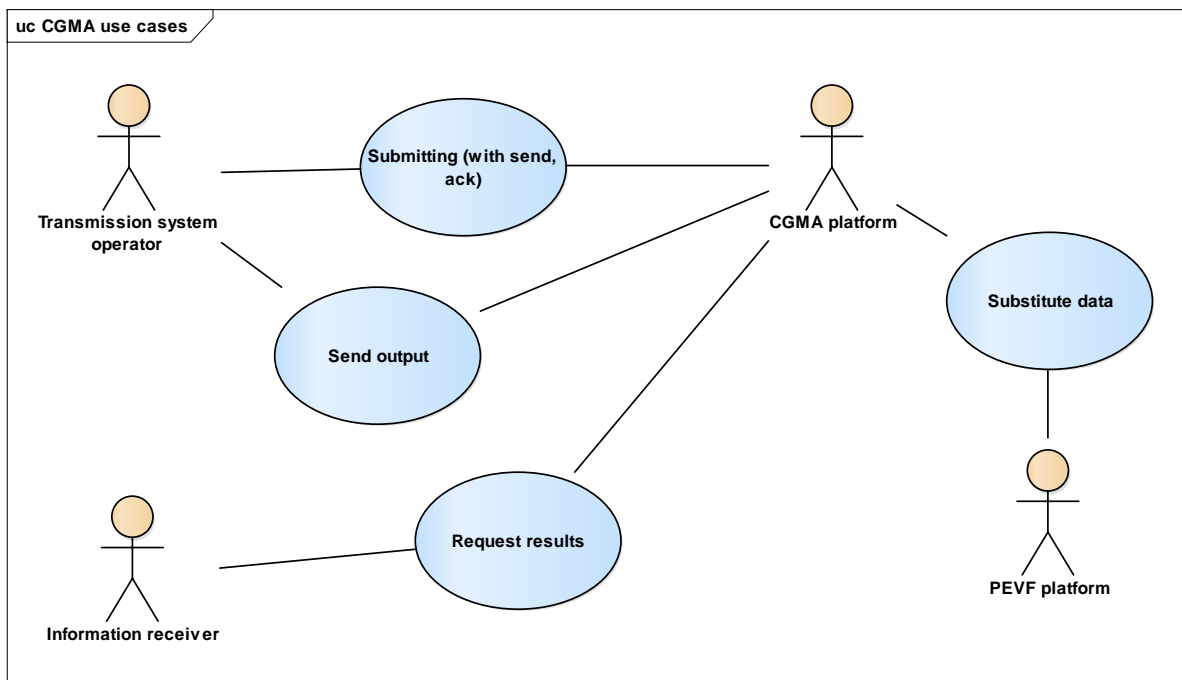
275 The PSLC results provided by the CGMA platform contain

- 276 • balanced netted area AC positions

- 277 • balanced DC flows on the level of split poles (if applicable): Depending on the
278 modelling approach of the DC lines these DC flows implicitly contain both gross and
279 net values (when using the simplified modelling approach) or not (when using the
280 embedded modelling approach).

281 **3. Use cases**

282 Use cases of CGMA data exchange are schematically presented in Figure 1. More detailed
283 descriptions of individual use cases and the actors involved can be found in Table 1 and
284 Table 2.



285

286 **Figure 1 – Use cases**

287 Table 1 gives a list of actors involved in CGMA data exchange.

288 **Table 1 – Actor labels and descriptions**

Actor label	Actor description
Transmission system operator	A TSO, or any other actor on behalf of a TSO, who is responsible for providing pre-processing data of a particular optimisation area.
CGMA platform	The Common Grid Model Alignment platform is responsible for collecting and validating pre-processing data as well as pole split and loss calculation data. It executes the CGMA algorithm and provides the results. It maintains input and output data of algorithm runs.
PEVF platform	The Pan European Verification Function platform holds matched schedules of exchanges between areas. It may provide netted area positions and DC flows, which serve as substitute data for missing CGMA PPD.
Information receiver	Any actor, e. g. a TSO or RSC, who wants to use CGMA or PSLC results.

289

290 Table 2 gives a list of use cases for CGMA data exchange.

291

Table 2 – CGMA data exchange

Use case label	Actors involved	Action description and assertions
Submitting PPD (with send, ack)	TSO, CGMA platform	A TSO or RSC submits a complete set of pre-processing data (PPD) for a particular optimisation area. The CGMA platform checks submitted PPD. It fully accepts or rejects a set of PPD. The action shall be executed only before PPD gate closure time.
Send CGMA output	TSO, CGMA platform	The CGMA platform provides the TSO with a detailed set of its PPD originally transmitted to the CGMA platform, substituted / modified PPD (if applicable), and CGMA results. In addition, the CGMA platform is generating a similar output for the entire CGMA area containing all optimisation areas. The action shall be executed only after the CGMA algorithm run successfully terminated with final results for the target time horizon.
Submitting PSLCD (with send, ack)	TSO, CGMA platform	A TSO or RSC submits a complete set of pole split and loss calculation data (PSLCD) for a particular optimisation area which is linked by one or more DC lines. The CGMA platform checks submitted PSLCD. It fully accepts or rejects a set of PSLCD. The action shall be executed only before PSLCD gate closure time.
Send PSLC output	TSO, CGMA platform	The CGMA platform provides the TSO with the results from its validated PSLCD. In addition, the CGMA platform is generating a similar output for the entire CGMA area containing all optimisation areas.
Substitute data	CGMA platform, PEVF platform	The CGMA platform requests netted area positions and DC flows of a particular optimisation area. The action may be executed only after PPD gate closure time.
Request CGMA results	CGMA platform, Information receiver	An information receiver, e. g. a TSO or RSC, requests CGMA results of any particular optimisation area within the entire CGMA area or for the entire CGMA area. The action shall be executed only after the CGMA algorithm run successfully terminated with final results for the target time horizon.
Request PSLC results	CGMA platform, Information receiver	An information receiver, e. g. a TSO or RSC, requests PSLC results for any particular optimisation area within the entire CGMA area or for the entire CGMA area. The action shall be executed only after PSLCD have been validated.

292

293 3.1 Document exchange processes

294 1. Overview

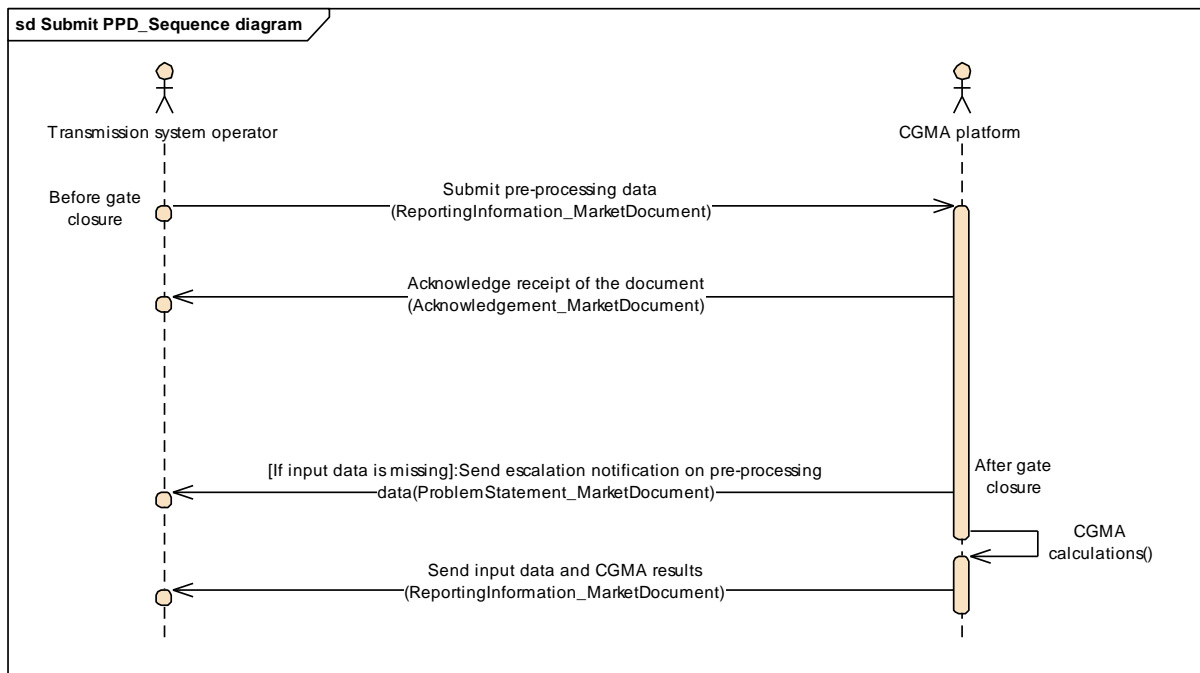
295 The use cases are supported by nine document exchange processes:

- 296 • Submit pre-processing data
- 297 • Send escalation notification on pre-processing data
- 298 • Send input data and CGMA results
- 299 • Request substitute data
- 300 • Request CGMA results

- 301 • Submit pole split and loss calculation data
- 302 • Send escalation notification on pole split and loss calculation data
- 303 • Send PSLC results
- 304 • Request PSLC results

305 Figure 2 shows a sequence diagram of the three document exchange processes 3.1.1 Submit
306 pre-processing data, 3.1.2 Send escalation notification on pre-processing data, and 3.1.3
307 Send input data and CGMA results .

308
309



310
311

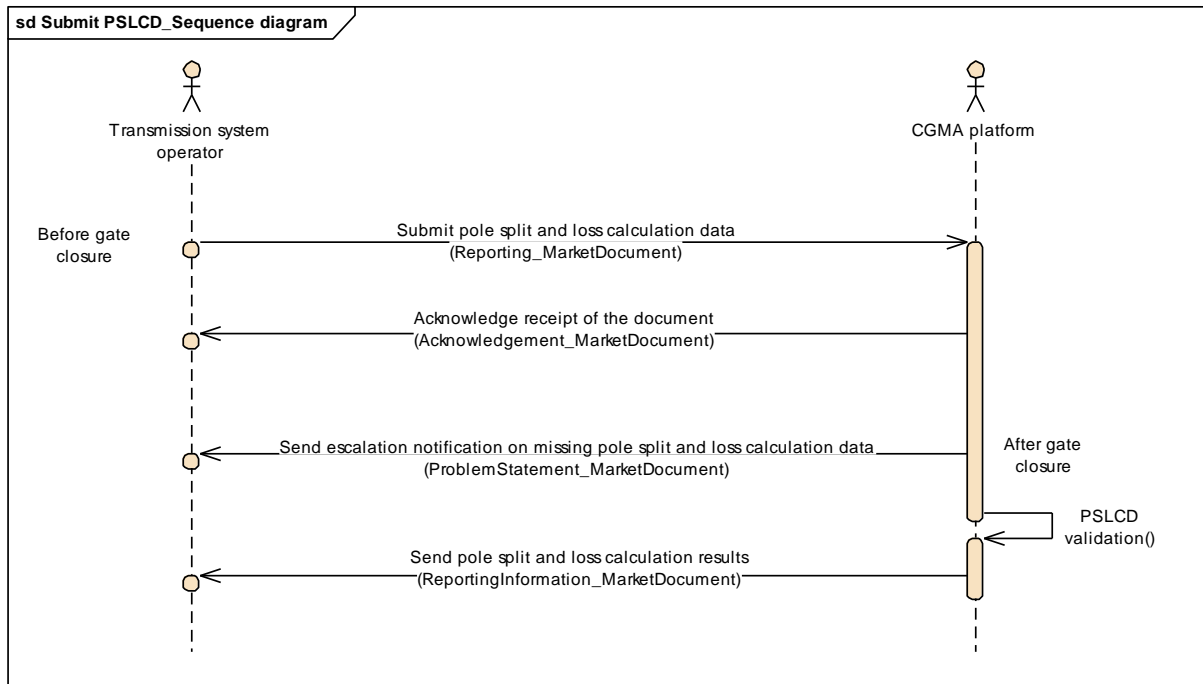
Figure 2 – Sequence diagram for submission of PPD

312 Figure 3 shows a sequence diagram of the three document exchange processes 0

313 Submit pole split and loss calculation data, 0

314 Send escalation notification on pole split and loss calculation data and 3.1.8 Send PSLC
315 results.

316 Note that in contrast to the submission of PPD by TSOs/RSCs and the provision of
317 optimisation output by the CGMA platform (called the core CGMA process) the provision of
318 validated PSLC results by the CGMA platform is based on the
319 ReportingInformation_MarketDocument dependency tables used by PEVF to support a unique
320 interface for subsequent IGM creation tools from both platforms with different scenarios
321 (CGMA: D-2, PEVF: D-1, ID). Please refer to [6] for more details on this specific
322 implementation of the Reporting Information Market Document.



323

324

Figure 3 – Sequence diagram for submission of PSLCD

325 **3.1.1 Submit pre-processing data**

326 Before PPD gate closure time, a TSO should initiate document exchange by submitting PPD
327 to the CGMA platform. The platform acknowledges the receipt of a document. If PPD
328 contained in the submitted document were rejected by the platform, it sends a negative
329 acknowledgement to the TSO, which gives a list of rejected PPD and reasons for rejection.

330 This process may be executed more than once.

331 A complete set of PPD consists of the time series listed in Table 3.

332

Table 3 – Time series of pre-processing data

Label	Description	BusinessType
Preliminary netted area position	A TSO's best forecast of the netted area position for an optimisation area. The feasibility range of adjustments must also be given and is part of the PPD. However, it is not transmitted as a separate business type. Mandatory.	B65
Minimum value of netted area position	That value which a balanced netted area position must not fall below for a given optimisation area. Optional.	B69
Maximum value of netted area position	That value which a balanced netted area position must not exceed for a given optimisation area. Optional.	B70
Preliminary DC gross flow	A TSO's best forecast of the DC gross flow at the exporting end for a given DC line. Mandatory for each given DC line.	B68
Minimum value of gross DC flow	That value which a balanced DC gross flow must not fall below for a given DC line. Optional.	B72
Maximum value of gross DC flow	That value which a balanced DC gross flow must not exceed for a given DC line. Mandatory for each given DC line.	B71

333 **3.1.2 Send escalation notification on pre-processing data**

334 After PPD gate closure time, the CGMA platform sends notification to a TSO if PPD are
335 missing, which is relevant for the TSO's optimisation area.

336 **3.1.3 Send input data and CGMA results**

337 After the CGMA platform has successfully terminated a CGMA run with final results for the
338 target time horizon, it sends to the TSO the CGMA algorithm input and CGMA results which
339 are relevant for the TSO's optimisation area. In case of any modification of PPD provided by a
340 TSO (by CGMA platform and/or RSC) the document will contain both the original input data
341 and the modified input data reporting the changes using the marketObjectStatus entity.

342 The time series of input data and CGMA results are listed in Table 4 and Table 5.

343 **Table 4 – Time series of input data**

Label	Description	BusinessType
Preliminary netted area position	The netted area position of an optimisation area used as input to the CGMA algorithm. It may be substituted with values from PEVF (if applicable for the target time horizon) or modified by a RSC. A feasibility range of adjustments must also be given. However, it is not transmitted as a separate business type. It may be modified by a RSC or CGMA platform. Mandatory. Repeated occurrence in case of modifications.	B65
Minimum value of netted area position	The minimum netted area position of an optimisation area used as input to the CGMA algorithm. It may be modified by a RSC or CGMA platform. Optional. Repeated occurrence in case of modifications.	B69
Maximum value of netted area position	The maximum netted area position of an optimisation area used as input to the CGMA algorithm. It may be modified by a RSC or CGMA platform. Optional. Repeated occurrence in case of modifications.	B70
Preliminary DC gross flow	A DC gross flow at the exporting end for a given DC line used as input to the CGMA algorithm. It may be substituted with values from PEVF (only D-2) or modified by a RSC or CGMA platform. Mandatory for each given DC line. Repeated occurrence in case of modifications.	B68
Minimum value of gross DC flow	A minimum DC gross flow for a given DC line used as input to the CGMA algorithm. It may be modified by a RSC or CGMA platform. Optional. Repeated occurrence in case of modifications.	B72
Maximum value of gross DC flow	A maximum DC gross flow for a given DC line used as input to the CGMA algorithm. It may be modified by a RSC or CGMA platform. Mandatory for each given DC line. Repeated occurrence in case of modifications.	B71

344

345 **Table 5 – Time series of CGMA results**

Label	Description	BusinessType
Balanced netted area position	The balanced netted area position of an optimisation area. A balanced netted area position is characterised by the fact that the sum of all netted area positions of the entire CGMA area is zero. Mandatory.	B65
Balanced netted area AC position	The balanced netted area AC position of an optimisation area is obtained by subtracting from the balanced netted area position all balanced DC flows into and out of that optimisation area. Mandatory.	B64

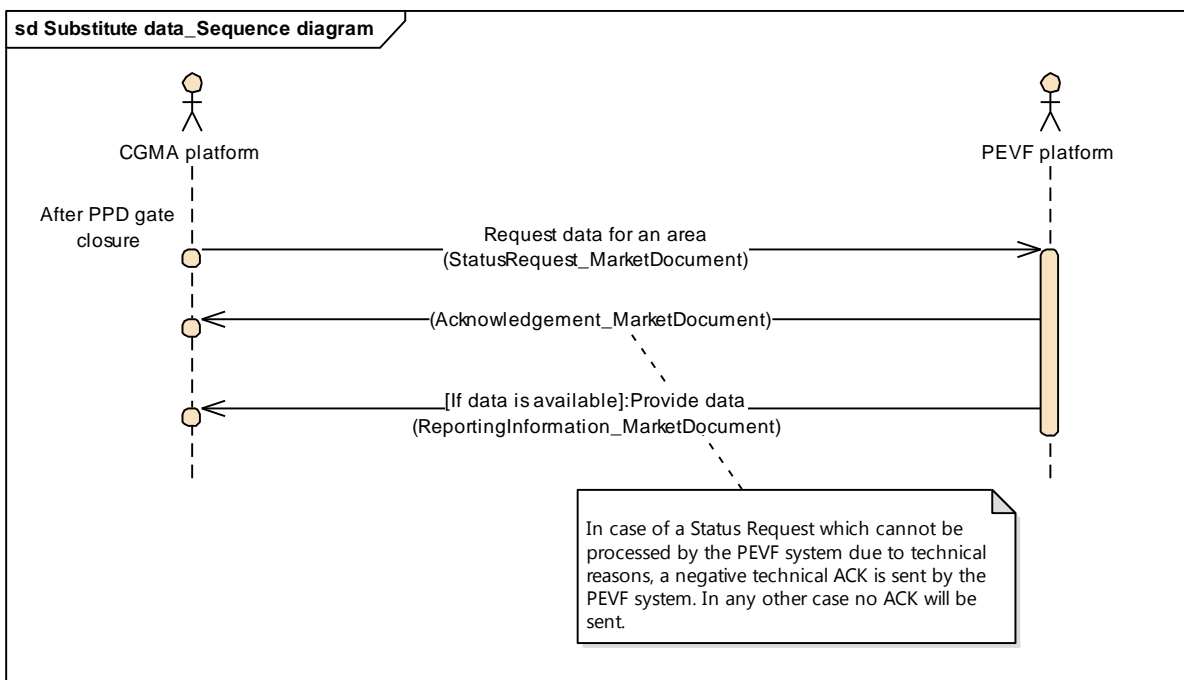
Label	Description	BusinessType
Indicative AC flow	It is the hypothetical flow on the aggregate of all AC tie lines of an electrical border between two optimisation areas. It results from the adjustments to the preliminary netted area positions of all optimisation areas made by the CGMA algorithm. Indicative AC flows are an artefact of the CGMA algorithm, and do not correspond to physical flows. Mandatory.	B73
Balanced DC gross flow	The flow at the exporting end of the DC line. Balanced flows on DC lines have the following properties: (i) the sum of all balanced netted area positions of the entire CGMA area is zero; (ii) the flow at the exporting end of each DC line is consistent with the flow at the importing end of the DC line corrected for losses on the DC line. Mandatory for each given DC line.	B68

346

347 **3.1.4 Request substitute data**

348 Figure 4 shows the sequence diagram.

349



350

351 **Figure 4 – Sequence diagram for request substitute data**

352 The process may only be executed after PPD gate closure time.

353 Document exchange is initiated by the CGMA platform requesting data from PEVF platform.
354 PEVF platform replies by sending the netted area AC position and DC flows of the requested
355 area, if these data are available.

356 The time series of substitute data are listed in Table 6.

357

Table 6 – Time series of substitute data

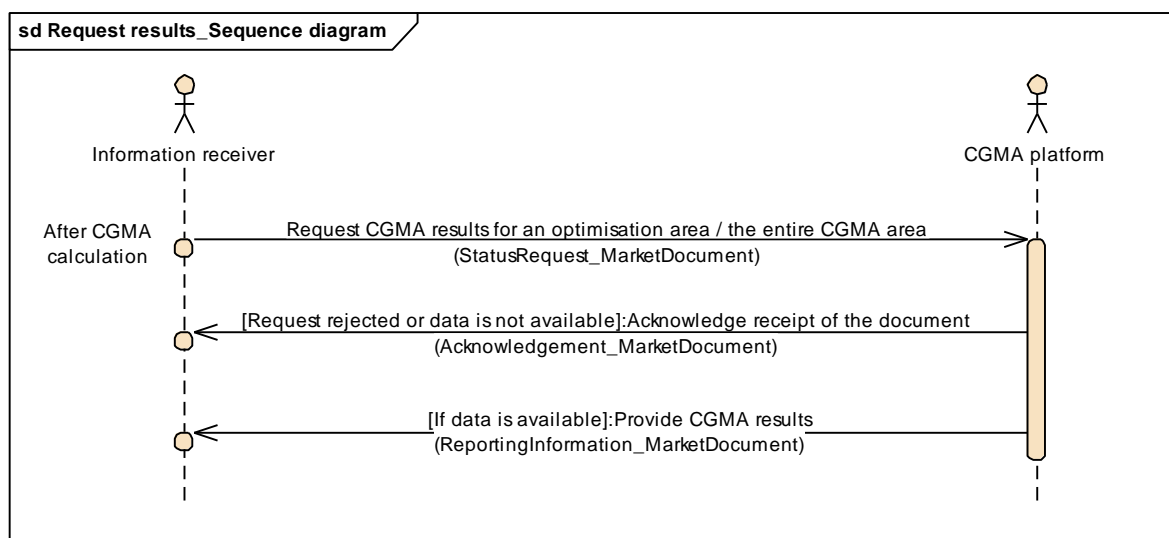
Label	Description	BusinessType
Netted area AC position	The netted AC area position for an optimisation area. Mandatory.	B64
Aggregated netted external schedule	The aggregated netted external schedule for each boundary point of a DC link. Mandatory for each given boundary point.	B63

358

359 **3.1.5 Request CGMA results**

360 Figure 5 shows a sequence diagram.

361



362

363

Figure 5 – Sequence diagram for request CGMA results

364 The process may only be executed after the CGMA algorithm run successfully terminated with
365 status final.

366 Document exchange is initiated by the Information receiver requesting CGMA result data from
367 CGMA platform. CGMA platform replies by sending CGMA results, if these data are available.
368 In any other case, CGMA platform replies an Acknowledgement_MarketDocument with
369 problem details.

370 CGMA results consist of the time series listed below in the table.

371

Table 7 – Time series of CGMA results

Label	Description	BusinessType
Balanced netted area position	The netted area position of an optimisation area. A balanced netted area position is characterised by the fact that the sum of all netted area positions of the entire CGMA area is zero. Mandatory.	B65
Balanced netted area AC position	The balanced netted area AC position of an optimisation area is obtained by subtracting from the balanced netted area position all balanced DC flows into and out of that optimisation area. Mandatory.	B64

Indicative AC flow	It is the hypothetical flow on the aggregate of all AC tie lines of an electrical border between two optimisation areas. It results from the adjustments to the preliminary netted area positions of all optimisation areas made by the CGMA algorithm. Indicative AC flows are an artefact of the CGMA algorithm, and do not correspond to physical flows. Mandatory.	B73
Balanced DC gross flow	The flow at the exporting end of the DC line. Balanced flows on DC lines have the following properties: (i) the sum of all balanced netted area positions of the entire CGMA area is zero; (ii) the flow at the exporting end of each DC line is consistent with the flow at the importing end of the DC line corrected for losses on the DC line. Mandatory for each given DC line.	B68

372

373 **3.1.6 Submit pole split and loss calculation data**

374 Before PSLC gate closure time, only TSOs with DC lines linking different synchronous areas
375 should initiate document exchange by submitting PSLCD containing the DC flows (the
376 document type is Reporting_MarketDocument labelled as “B26 = Aggregated netted external
377 schedules” for consistency with PEVF data formats) per boundary point for each DC link to
378 the CGMA platform. The platform acknowledges the receipt of a document. If PSLCD
379 contained in the submitted document were rejected by the platform, it sends a negative
380 acknowledgement to the TSO, which gives a list of rejected PSLCD and reasons for rejection.

381 This process may be executed more than once.

382 A complete set of PSLCD consists of the time series listed in Table 11.

383 **Table 8 – Time series of pole split and loss calculation data**

Label	Description	BusinessType
Aggregated netted external schedule	The DC flow (labelled as aggregated netted external schedule) for each boundary point of a DC link. Mandatory.	B63

384

385 **3.1.7 Send escalation notification on pole split and loss calculation data**

386 After PSLCD gate closure time, the CGMA platform sends notification to a TSO if PSLCD are
387 missing, which is relevant for the TSO's optimisation area.

388 **3.1.8 Send PSLC results**

389 After the CGMA platform has validated all PSLC input data it will create a final document with
390 the following time series.

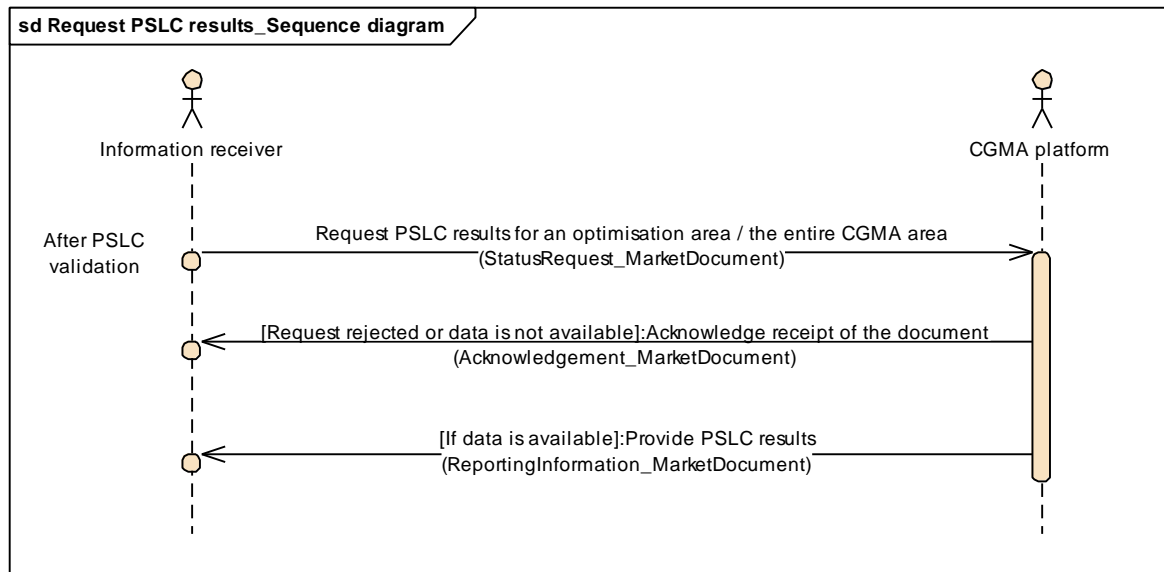
391 **Table 9 – Time series of PSLC**

Label	Description	BusinessType
Balanced netted area AC position	The netted AC area position for an optimisation area. Mandatory.	B64
Aggregated netted external schedule	The DC flow (labelled as aggregated netted external schedule) for each boundary point of a DC link. Mandatory for each given boundary point.	B63

392

393 **3.1.9 Request PSLC results**

394 Figure 6 shows a sequence diagram.



395

396

Figure 6 – Sequence diagram for request PSLC results

397 The process may only be executed after the CGMA algorithm run successfully terminated with
398 status final and all pole split and loss calculation data were successfully validated (or
399 computed by the CGMA platform by using fixed quotations and percentage values in case
400 they were not submitted or successfully validated).

401 Document exchange is initiated by the Information receiver requesting PSLC result data from
402 CGMA platform. CGMA platform replies by sending PSLC results, if these data are available.
403 In any other case, CGMA platform replies an Acknowledgement_MarketDocument with
404 problem details.

405 PSLC results consist of the time series listed below in the table.

406

Table 10 – Time series of PSLC

Label	Description	BusinessType
Balanced netted area AC position	The netted AC area position for an optimisation area. Mandatory.	B64
Aggregated netted external schedule	The DC flow (labelled as aggregated netted external schedule) for each boundary point of a DC link. Mandatory for each given boundary point.	B63

407

408 4 General rules for document exchange

409 4. General rules

410 The document exchange processes of CGMA described in the previous chapter require
411 sending and receiving various EDI documents. The EDI documents to be used are

- 412 • Reporting_MarketDocument, refer to reference [5];
- 413 • ReportingInformation_MarketDocument, refer to reference [7];
- 414 • Acknowledgement_MarketDocument IEC62325-451-1, refer to reference [2];
- 415 • ProblemStatement_MarketDocument IEC62325-451-5, refer to reference [3];
- 416 • StatusRequest_MarketDocument IEC62325-451-5, refer to reference [4].

417 These EDI documents shall be used to carry out the communication tasks

- 418 • **submit** - The document contains data to be processed by the receiver.

419 • **get** - The document specifies a request for data to be provided by the receiver.

420 • **reply** - It is the reaction to receiving a submit or get document.

421 • **send** - The document contains data which may be processed by the receiver.

422 Table 11 gives an overview, which EDI document shall be used to carry out the
423 communication tasks of document exchange processes (DEP). Note that dependency tables
424 of using ReportingInformation_MarketDocument are provided in chapter 5 of this document.
425 The abbreviations used in the table (e.g., RID) are explained below the table.

426 **Table 11 – List of documents for CGMA process exchanges**

DEP chapter	DEP label	send/submit/get document	reply document	reply conditions
3.1.1	Submit pre-processing data	RID	EAD	RID fully accepted.
				Syntax error or fully rejected due to semantic error in PPD or fully rejected due to closed PPD submission gate.
3.1.2	Send escalation notification on pre-processing data	EPSD	none	
3.1.3	Send input data and CGMA results	RID	none	
3.1.4	Request substitute data	ESR	RID	ESR fully accepted and requested data is available.
			EAD	Negative EAD in case the ESR cannot be processed due to a technical reason.
3.1.5	Request CGMA results	ESR	RID	ESR fully accepted and requested data available.
			EAD	Syntax error or semantic error in ESR header or error in request attributes.
			EAD	Requested data not available.
3.1.6	Submit pole split and loss calculation data	RD	EAD	RD fully accepted.
				Syntax error or fully rejected due to semantic error in PSLCD or fully rejected due to closed PSLCD submission gate.
3.1.7	Send escalation notification on pole split and loss calculation data	EPSD	none	
3.1.8	Send PSLC results	RID	none	
3.1.9	Request PSLC results	ESR	RID	ESR fully accepted and requested data available.
			EAD	Syntax error or semantic error in ESR header or error in request attributes.

DEP chapter	DEP label	send/submit/get document	reply document	reply conditions
			EAD	Requested data not available.

427 Note: RD - Reporting_MarketDocument; **RID** - ReportingInformation_MarketDocument; **EAD** - Acknowledgement_MarketDocument; **EPSD**
428 - ProblemStatement_MarketDocument; **ESR** - StatusRequest_MarketDocument

429 **4.1 Notes about using StatusRequest_MarketDocument in CGMA document exchange**

430 The header of StatusRequest_MarketDocument shall contain the information listed in Table
431 12.

432 **Table 12 – StatusRequest_MarketDocument header values**

Attribute	Value
mRID	Identification of the request
type	B20: Status request for a reporting information market document
sender_MarketParticipant.mRID	The identification of the sender.
sender_MarketParticipant.marketRole.type	The role of the sender.
receiver_MarketParticipant.mRID	The identification of the receiver.
receiver_MarketParticipant.marketRole.type	The role of the receiver. A39: Data provider
createdDateTime	UTC time.

433

434 The body of StatusRequest_MarketDocument shall contain a list of attribute-value pairs.
435 Allowed attributes and their dependencies are listed in Table 13.

436 **Table 13 – StatusRequest_MarketDocument AttributeInstanceComponent values**

attribute	values dependencies	description
type	B19: Reporting information market document. B29: PS&LC results document Mandatory.	Type of the reply document. Can be either CGMA results or PSLC results.
domain.mRID	EIC of single optimisation area / EIC of CGMA area. Mandatory.	Reply document shall contain data relevant for that optimisation area / the entire CGMA area.
Process.processType	A33: Year ahead. A32: Month ahead. A31: Week ahead. A45: Two days ahead. Mandatory.	
time_Period.timeInterval	UTC time. Mandatory.	Start time of CGMA target time interval.

437

438 **4.2** Notes about using ProblemStatement_MarketDocument as an escalation notification

439 The header of ProblemStatement_MarketDocument shall contain the information listed in
440 Table 14.

441 **Table 14 – ProblemStatement_MarketDocument header values**

Attribute	Value
mRID	Unique identification of the document.
revisionNumber	Version of the document.
type	A34: Escalation document
sender_MarketParticipant.mRID	The identification of the sender.
sender_MarketParticipant.marketRole.type	The role of the sender. A39: Data provider (CGMA platform)
receiver_MarketParticipant.mRID	The identification of the receiver.
receiver_MarketParticipant.marketRole.type	The role of the receiver. A04: System operator A44: RSC
createdDateTime	UTC time.
period.timeInterval	CGMA target time horizon covered by the document
expected_MarketDocument.type	B19: Reporting information market document B26: Aggregated netted external schedule document
expected_MarketDocument.createdDateTime	UTC time. The gate closure time.
expected_MarketDocument.process.processType	A33: Year ahead. A32: Month ahead. A31: Week ahead. A45: Two days ahead.
domain.mRID	The optimisation area of concern.
Reason.code	A91: Expected document not received.

442

443 **4.3** Notes about using Reporting_MarketDocument to submit pole split and loss calculation
444 data

445 **Error! Reference source not found.** gives the rules governing attributes and elements of R
446 eporting_MarketDocument header. Please refer to [5] for more details on the implementation
447 of the Reporting Market Document.

448

449

Table 15 – Reporting_MarketDocument header

	Attribute	Description and dependencies
Reporting_MarketDocument	mRID	Document identification.
	revisionNumber	Version of the document.
	type	B26: Aggregated netted external schedule document
	process.processType	A45: Two days ahead.
	sender_MarketParticipant.mRID	The identification of the sender.
	sender_MarketParticipant.marketRole.type	The role of the sender. A04: System operator A44: RSC
	receiver_MarketParticipant.mRID	The identification of the receiver.
	receiver_MarketParticipant.marketRole.type	The role of the receiver. A39: Data provider (CGMA platform)
	createdDateTime	UTC time.
	time_Period.timeInterval	CGMA target time horizon covered by the document.
	domain.mRID	The optimisation area of concern.
	Subject_Domain.mRID	The optimisation area of concern.

450

451 The document should contain one or more elements of TimeSeries class.

452 Table 16 gives the rules governing the attributes and sub-elements of
453 Reporting_MarketDocument.TimeSeries elements.

454

Table 16 – Reporting_MarketDocument.TimeSeries elements

	Attribute	Description and dependencies	
TimeSeries		DC flow	
	mRID	Identification of the time series.	
	businessType	B63 = Aggregated netted external schedule	
	product	8716867000016: Active Power	
		import	export
	in_Domain.mRID	Identification of the optimisation area. Must match both domain.mRID and Subject_Domain.mRID. Mandatory.	Identification of the importing area. Mandatory.
	out_Domain.mRID	Identification of the exporting area . Mandatory.	Identification of the optimisation area. Must match both domain.mRID and Subject_Domain.mRID. Mandatory.
	connectingLine_RegisteredResource.mRID	Identification of the DC link. Mandatory.	

TimeSeries	Attribute	Description and dependencies
		DC flow
	quantity_Measure_Unit.name	MAW: MW
	curveType	A01: Sequential fixed size block A02: Point. A03: Variable block.
.Period	timeInterval	Time interval covered by elements of Point class.
	resolution	Resolution used in the Point class.
.Period.Point	position	Position in the time series. Mandatory.
	quantity	Value of the flow (no signed value). Mandatory.

455 5 Using the ReportingInformation_MarketDocument in CGMA

456 5. Overview

457 According to Table 11, the ReportingInformation_MarketDocument is used in six different
458 processes of CGMA document exchange. For each process, specific rules for using
459 ReportingInformation_MarketDocument, so called dependencies, are defined in subsections
460 of this chapter.

461 6. Rules governing ReportingInformation_MarketDocument to submit pre-processing data

462 Table 17 gives the rules governing attributes and elements of
463 ReportingInformation_MarketDocument header.

464 **Table 17 – ReportingInformation_MarketDocument header**

ReportingInformation_MarketDocument	Attribute	Description and dependencies
		mRID
	revisionNumber	Version of the document.
	type	B19: Reporting information market document.
	process.processType	A33: Year ahead. A32: Month ahead. A31: Week ahead. A45: Two days ahead.
	sender_MarketParticipant.mRID	The identification of the sender.
	sender_MarketParticipant.marketRole.type	The role of the sender. A04: System operator A44: RSC
	receiver_MarketParticipant.mRID	The identification of the receiver.
	receiver_MarketParticipant.marketRole.type	The role of the receiver. A39: Data provider (CGMA platform)
	createdDateTime	UTC time.
	time_Period.timeInterval	CGMA target time horizon covered by the document.
	domain.mRID	The optimisation area of concern.
	dataset_MarketDocument.mRID	Not used.
	dataset_MarketDocument.revisionNumber	Not used.
	docStatus	Not used.
	referenced_DateAndOrTime.date	Not used.
	referenced_DateAndOrTime.time	Not used.

Req	Attribute	Description and dependencies
	Reason	Not used.

465

466 The document should contain one or more elements of TimeSeries class.

467

468 Table 18 gives the rules governing the attributes and sub-elements of
469 ReportingInformation_MarketDocument.TimeSeries elements.

470 **Table 18 – ReportingInformation_MarketDocument.TimeSeries elements**

	Attribute	Description and dependencies			
		Netted area position or maximum and minimum netted area position values		DC flow or maximum and minimum DC flow values	
TimeSeries	mRID	Identification of the time series.			
	businessType	B65: Netted area position. The net AC and DC position of the optimisation area.		B68: DC gross flow	
		B70: Maximum netted area position. B69: Minimum netted area position.		B71: Maximum DC gross flow. B72: Minimum DC gross flow.	
	product	8716867000016: Active Power			
		import	export	import	export
	in_Domain.mRID	Identification of optimisation area. Mandatory.	Not used.	Identification of optimisation area. Mandatory.	Identification of the importing area. Mandatory.
	out_Domain.mRID	Not used.	Identification of optimisation area. Mandatory.	Identification of the exporting area. Mandatory.	Identification of optimisation area. Mandatory.
	connectingLine_RegisteredResource.mRID	Not used.		Identification of the DC link. Mandatory.	
	measurement_Unit.name	MAW: MW			
	curveType	A02: Point.			
	marketObjectStatus.status	Not used.			
	Reason	Not used.			
.Period					
	timeInterval	Time interval covered by elements of Point class.			
	resolution	Resolution used in the Point class.			
.Period.Point	position	Position in the time series. Mandatory.			
	quantity	Value of the netted area position, flow or minimum / maximum (no signed value). Mandatory.			
	posFR_Quantity.quantity	Positive feasibility range (no signed value). Mandatory for BusinessType B65. Not used otherwise.		Not used.	
	negFR_Quantity.quantity	Negative feasibility range (signed value). Mandatory for BusinessType B65. Not used otherwise.		Not used.	
	Reason	Not used.			

471

472 7. Rules governing ReportingInformation_MarketDocument to reply substitute data
473 Table 19 gives the rules governing attributes and elements of
474 ReportingInformation_MarketDocument header.

475 **Table 19 – ReportingInformation_MarketDocument header**

ReportingInformation_MarketDocument	Attribute	Description and dependencies
	mRID	Document identification.
	revisionNumber	Version of the document.
	type	B19: Reporting information market document.
	process.processType	A01: Day ahead
	sender_MarketParticipant.mRID	The identification of the sender.
	sender_MarketParticipant.marketRole.type	The role of the sender. A32: Market Information Aggregator (PEVF platform)
	receiver_MarketParticipant.mRID	The identification of the receiver.
	receiver_MarketParticipant.marketRole.type	The role of the receiver. A33: Information Receiver (CGMA platform)
	createdDateTime	UTC time.
	time_Period.timeInterval	CGMA target time horizon covered by the document.
	domain.mRID	The optimisation area of concern.
	dataset_MarketDocument.mRID	Not used.
	dataset_MarketDocument.revisionNumber	Not used.
	docStatus	A01 = Intermediate A02 = Final
	referenced_DateAndOrTime.date	Not used.
	referenced_DateAndOrTime.time	Not used.
Reason	B08 = Data not yet available.	

476
477 The document should contain one or more elements of TimeSeries class.
478 Table 20 gives the rules governing the attributes and sub-elements of
479 ReportingInformation_MarketDocument.TimeSeries elements.

480 **Table 20 – ReportingInformation_MarketDocument.TimeSeries elements**

	Attribute	Description and dependencies			
		Netted area position		DC flow	
TimeSeries	mRID	Identification of the time series.			
	businessType	B64: Netted area AC position. The net AC position of the optimisation area.		B63 = Aggregated netted external schedule	
	product	8716867000016: Active Power			
		import	export	import	export
	in_Domain.mRID	Identification of the optimisation area. Mandatory.	Identification of the synchronous area. Mandatory.	Identification of the optimisation area. Mandatory.	Identification of the importing area. Mandatory.

TimeSeries	Attribute	Description and dependencies			
		Netted area position		DC flow	
	out_Domain.mRID	Identification of the synchronous area. Mandatory.	Identification of the optimisation area. Mandatory.	Identification of the exporting area. Mandatory.	Identification of the optimisation area. Mandatory.
	connectingLine_RegisteredResource.mRID	Not used.		Identification of the DC link. Mandatory.	
	measurement_Unit.name	MAW: MW			
	curveType	A01: Sequential fixed size block A03: Variable block.			
	marketObjectStatus.status	Not used.			
	Reason	B30 = Data unverified B31 = Data verified A26 = Default Time Series applied A30 = Imposed Time Series from nominated party's Time Series A54 = Global position not in balance			
.Period					
	timeInterval	Time interval covered by elements of Point class.			
	resolution	Resolution used in the Point class.			
.Period.Point	position	Position in the time series. Mandatory.			
	quantity	Value of the netted area position or flow (no signed value). Mandatory.			
	posFR_Quantity.quantity	Not used.		Not used.	
	negFR_Quantity.quantity	Not used.		Not used.	
	Reason	Not used.			

481

482 **5.1 Rules governing ReportingInformation_MarketDocument to send input data and CGMA**
483 **results**

484 Table 21 gives the rules governing attributes and elements of
485 ReportingInformation_MarketDocument header.

486 **Table 21 – ReportingInformation_MarketDocument header**

ReportingInformation_MarketDocument	Attribute	Description and dependencies	
		mRID	Document identification.
revisionNumber	Version of the document.		
type	B19: Reporting information market document.		
process.processType	A33: Year ahead. A32: Month ahead. A31: Week ahead. A45: Two days ahead.		
sender_MarketParticipant.mRID	The identification of the sender.		
sender_MarketParticipant.marketRole.type	The role of the sender. A39: Data provider (CGMA platform)		

Rep	Attribute	Description and dependencies
	receiver_MarketParticipant.mRID	The identification of the receiver.
	receiver_MarketParticipant.marketRole.type	The role of the receiver. A04: System operator A44: RSC
	createdDateTime	UTC time.
	time_Period.timeInterval	CGMA target time horizon covered by the document.
	domain.mRID	The optimisation area of concern.
	dataset_MarketDocument.mRID	Not used.
	dataset_MarketDocument.revisionNumber	Not used.
	docStatus	Not used.
	referenced_DateAndOrTime.date	Not used.
	referenced_DateAndOrTime.time	Not used.
Reason	Not used.	

487

488 The document should contain one or more elements of TimeSeries class.

489 Table 22 gives the rules governing the attributes and sub-elements of
490 ReportingInformation_MarketDocument.TimeSeries elements.

491

Table 22 – ReportingInformation_MarketDocument.TimeSeries elements

	Attribute	Description and dependencies			
		netted (AC) area position or maximum and minimum netted area position values		DC flow or maximum and minimum DC flow values or indicative AC flow	
TimeSeries	mRID	Identification of the time series.			
	businessType	B64: Netted AC area position. B65: Netted area position. The net AC and DC position of the optimisation area. B69: Minimum netted area position. B70: Maximum netted area position.	B68: DC gross flow B71: Maximum DC gross flow. B72: Minimum DC gross flow. B73: Indicative AC flow.		
	product	8716867000016: Active Power.			
		import	export	import	export
	in_Domain.mRID	Identification of the optimisation area. Mandatory.	Not used.	Identification of the optimisation area. Mandatory.	Identification of the importing area. Mandatory.
	out_Domain.mRID	Not used.	Identification of the optimisation area. Mandatory.	Identification of the exporting area. Mandatory.	Identification of the optimisation area. Mandatory.
	connectingLine_RegisteredResource.mRID	Not used.		Identification of the DC link. Mandatory for B68: DC gross flow, Not used for indicative AC flow (B73).	
	measurement_Unit.name	MAW: MW			

	Attribute	Description and dependencies	
		netted (AC) area position or maximum and minimum netted area position values	DC flow or maximum and minimum DC flow values or indicative AC flow
TimeSeries	curveType	A02: Point.	
	marketObjectStatus.status	Coded description of a time series. To be used for providing information about life cycle status. A29: Submitted. (The object was submitted to be processed by CGMA platform.) A30: Substituted. (CGMA platform used data originating from PEVF platform.) A31: Modified. (The values were modified by RSC or CGMA platform.) A32: Result. (The object is the final result of CGMA algorithm.) Mandatory.	
	Reason	Not used.	
.Period	timeInterval	Time interval covered by elements of Point class.	
	resolution	Resolution used in the Point class.	
.Period.Point	position	Position in the time series. Mandatory.	
	quantity	Value of the netted (AC) area position, flow or minimum / maximum (no signed value). Mandatory.	
	posFR_Quantity.quantity	Positive feasibility range (no signed value). Mandatory for BusinessType B65. Not used otherwise.	Not used.
	negFR_Quantity.quantity	Negative feasibility range (signed value). Mandatory for BusinessType B65. Not used otherwise.	Not used.
	Reason.code	May optionally be provided. A63 = Time Series modified.	
	Reason.text	Optionally used to provide additional information about the reason for modification in case of marketObjectStatus.status A30: Substituted, or A31: Modified.	

493 **5.2 Rules governing ReportingInformation_MarketDocument to reply CGMA results**

494 Table 23 gives the rules governing attributes and elements of
495 ReportingInformation_MarketDocument header.

496 **Table 23 – ReportingInformation_MarketDocument header**

ReportingInformation_MarketDocument	Attribute	Description and dependencies
	mRID	Document identification.
	revisionNumber	Version of the document.
	type	B19: Reporting information market document.
	process.processType	A33: Year ahead. A32: Month ahead. A31: Week ahead. A45: Two days ahead.
	sender_MarketParticipant.mRID	The identification of the sender.
	sender_MarketParticipant.marketRole.type	The role of the sender. A39: Data provider (CGMA platform)
	receiver_MarketParticipant.mRID	The identification of the receiver.
	receiver_MarketParticipant.marketRole.type	The role of the receiver. A04: System operator A44: RSC
	createdDateTime	UTC time.
	time_Period.timeInterval	CGMA target time horizon covered by the document.
	domain.mRID	The optimisation area of concern.
	dataset_MarketDocument.mRID	Not used.
	dataset_MarketDocument.revisionNumber	Not used.
	docStatus	Not used.
	referenced_DateAndOrTime.date	Not used.
	referenced_DateAndOrTime.time	Not used.
Reason	Not used.	

497

498 The document should contain one or more elements of TimeSeries class.

499 Table 24 gives the rules governing the attributes and sub-elements of
500 ReportingInformation_MarketDocument.TimeSeries elements.

501 **Table 24 – ReportingInformation_MarketDocument.TimeSeries elements**

TimeSeries	Attribute	Description and dependencies			
		Netted (AC) area position		DC flow or indicative AC flow	
mRID		Identification of the time series.			
businessType		B64: Netted AC area position. B65: Netted area position. The net AC and DC position of the optimisation area.		B68: DC gross flow B73: Indicative AC flow.	
product		8716867000016: Active Power.			
		import	export	import	export

TimeSeries	Attribute	Description and dependencies			
		Netted (AC) area position		DC flow or indicative AC flow	
	in_Domain.mRID	Identification of the optimisation area. Mandatory.	Not used.	Identification of the optimisation area. Mandatory.	Identification of the importing area. Mandatory.
	out_Domain.mRID	Not used.	Identification of the optimisation area. Mandatory.	Identification of the exporting area. Mandatory.	Identification of the optimisation area. Mandatory.
	connectingLine_RegisteredResource.mRID	Not used.		Identification of the DC link. Mandatory for B68: DC gross flow Not used for B73: Indicative AC flow.	
	measurement_Unit.name	MAW: MW.			
	curveType	A02: Point.			
	marketObjectStatus.status	A32: Result. (The object is the final result of CGMA algorithm.) Mandatory.			
	Reason	Not used.			
	.Period	timeInterval	Time interval covered by elements of Point class.		
resolution		Resolution used in the Point class.			
position		Position in the time series. Mandatory.			
.Period.Point	quantity	Value of the netted (AC) area position or flow (no signed value). Mandatory.			
	posFR_Quantity.quantity	Not used.			
	negFR_Quantity.quantity	Not used.			
	Reason	Not used.			

502

503 5.3 Rules governing ReportingInformation_MarketDocument to send PSLC results

504 Table 25 gives the rules governing attributes and elements of
505 ReportingInformation_MarketDocument header.

506

Table 25 – ReportingInformation_MarketDocument header

ReportingInformation_MarketDocu	Attribute	Description and dependencies
	mRID	Document identification.
	revisionNumber	Version of the document.
	type	B29: PS&LC results document
	process.processType	A45: Two days ahead.
	sender_MarketParticipant.mRID	The identification of the sender.
	sender_MarketParticipant.marketRole.type	The role of the sender. A39: Data provider (CGMA platform)
	receiver_MarketParticipant.mRID	The identification of the receiver.

Rep	Attribute	Description and dependencies
	receiver_MarketParticipant.marketRole.type	The role of the receiver. A04: System operator A44: RSC
	createdDateTime	UTC time.
	time_Period.timeInterval	CGMA target time horizon covered by the document.
	domain.mRID	The optimisation area of concern.
	dataset_MarketDocument.mRID	Not used.
	dataset_MarketDocument.revisionNumber	Not used.
	docStatus	A02 = Final
	referenced_DateAndOrTime.date	Not used.
	referenced_DateAndOrTime.time	Not used.
	Reason	Not used.

507

508 The document should contain one or more elements of TimeSeries class.

509 Table 26 gives the rules governing the attributes and sub-elements of
510 ReportingInformation_MarketDocument.TimeSeries elements.

511 **Table 26 – ReportingInformation_MarketDocument.TimeSeries elements**

	Attribute	Description and dependencies			
		Netted area position		DC flow	
TimeSeries	mRID	Identification of the time series.			
	businessType	B64: Netted area AC position. The net AC position of the optimisation area.		B63 = Aggregated netted external schedule	
	product	8716867000016: Active Power			
		import	export	import	export
	in_Domain.mRID	Identification of the optimisation area. Mandatory.	Identification of the synchronous area. Mandatory.	Identification of the optimisation area. Mandatory.	Identification of the importing area. Mandatory.
	out_Domain.mRID	Identification of the synchronous area. Mandatory.	Identification of the optimisation area. Mandatory.	Identification of the exporting area. Mandatory.	Identification of the optimisation area. Mandatory.
	connectingLine_RegisteredResource.mRID	Not used.		Identification of the DC link. Mandatory.	
	measurement_Unit.name	MAW: MW			
	curveType	A01: Sequential fixed size block A03: Variable block.			

TimeSeries	Attribute	Description and dependencies	
		Netted area position	DC flow
TimeSeries	marketObjectStatus.status		Coded description of a time series. To be used for providing information about life cycle status. A29: Submitted. (The object was submitted to be processed by CGMA platform.) A30: Substituted. (The values were computed by the CGMA platform.)
	Reason	Not used.	
.Period	timeInterval	Time interval covered by elements of Point class.	
	resolution	Resolution used in the Point class.	
.Period.Point	position	Position in the time series. Mandatory.	
	quantity	Value of the netted area position or flow (no signed value). Mandatory.	
	posFR_Quantity.quantity	Not used.	
	negFR_Quantity.quantity	Not used.	
	Reason		Optionally used to provide additional information about the reason for modification in case of marketObjectStatus.status A30: Substituted.

512

513 5.4 Rules governing ReportingInformation_MarketDocument to reply PSLC results

514 Table 27 gives the rules governing attributes and elements of
515 ReportingInformation_MarketDocument header.

516

Table 27 – ReportingInformation_MarketDocument header

ReportingInformation_MarketDocument	Attribute	Description and dependencies
		mRID
revisionNumber	Version of the document.	
type	B29: PS&LC results document	
process.processType	A45: Two days ahead.	
sender_MarketParticipant.mRID	The identification of the sender.	
sender_MarketParticipant.marketRole.type	The role of the sender. A39: Data provider (CGMA platform)	
receiver_MarketParticipant.mRID	The identification of the receiver.	
receiver_MarketParticipant.marketRole.type	The role of the receiver. A04: System operator A44: RSC	
createdDateTime	UTC time.	
time_Period.timeInterval	CGMA target time horizon covered by the document.	
domain.mRID	The optimisation area of concern.	
dataset_MarketDocument.mRID	Not used.	
dataset_MarketDocument.revisionNumber	Not used.	

Rep	Attribute	Description and dependencies
	docStatus	A02 = Final
	referenced_DateAndOrTime.date	Not used.
	referenced_DateAndOrTime.time	Not used.
	Reason	Not used.

517

518 The document should contain one or more elements of TimeSeries class.

519 Table 28 gives the rules governing the attributes and sub-elements of
520 ReportingInformation_MarketDocument.TimeSeries elements.

521 **Table 28 – ReportingInformation_MarketDocument.TimeSeries elements**

	Attribute	Description and dependencies			
		Netted area position		DC flow	
TimeSeries	mRID	Identification of the time series.			
	businessType	B64: Netted area AC position. The net AC position of the optimisation area.		B63 = Aggregated netted external schedule	
	product	8716867000016: Active Power			
		import	export	import	export
	in_Domain.mRID	Identification of the optimisation area. Mandatory.	Identification of the synchronous area. Mandatory.	Identification of the optimisation area. Mandatory.	Identification of the importing area. Mandatory.
	out_Domain.mRID	Identification of the synchronous area. Mandatory.	Identification of the optimisation area. Mandatory.	Identification of the exporting area. Mandatory.	Identification of the optimisation area. Mandatory.
	connectingLine_RegisteredResource.mRID	Not used.		Identification of the DC link. Mandatory.	
	measurement_Unit.name	MAW: MW			
	curveType	A01: Sequential fixed size block A03: Variable block.			
	marketObjectStatus.status			Coded description of a time series. To be used for providing information about life cycle status. A29: Submitted. (The object was submitted to be processed by CGMA platform.) A30: Substituted. (The values were computed by the CGMA platform.)	
Reason	Not used.				
.Period	timeInterval	Time interval covered by elements of Point class.			
	resolution	Resolution used in the Point class.			
.Perio	position	Position in the time series. Mandatory.			

TimeSeries	Attribute	Description and dependencies	
		Netted area position	DC flow
	quantity	Value of the netted area position or flow (no signed value). Mandatory.	
	posFR_Quantity.quantity	Not used.	
	negFR_Quantity.quantity	Not used.	
	Reason		Optionally used to provide additional information about the reason for modification in case of marketObjectStatus.status A30: Substituted.

522

523 8. Additional rules governing the use of TimeSeries

524 For the time series data used in the data exchanges as being described in chapters 6, 5.1 and
525 5.2 the netted AC area position and netted area position of an optimisation area are always
526 provided using two time series.

527 • One time series for import into the optimisation area A with in_Domain.mRID =
528 "mRID_A", out_Domain.mRID = "" (empty).

529 • One time series for export from the optimisation area A with in_Domain.mRID = ""
530 (empty), out_Domain.mRID = "mRID_A".

531 • These two time series shall have the same Period.resolution and the same
532 Period.timeInterval. For a given Point.position, the Point.quantity of one time series
533 must be zero, whereas the Point.quantity of the other time series may have a value
534 larger than zero (pair of netted values). Point.quantity of both time series must be zero
535 when the netted area position of the optimisation area is zero for the given
536 Point.position.

537 • A feasibility range (Point.posFR_Quantity.quantity and Point.negFR_Quantity.quantity)
538 shall be provided for every point.quantity. If PPD contain more than one time series of
539 BusinessType A65 (import and export values in one document), the TSO has to make
540 sure that the feasibility ranges for a given Point have the same values in both time
541 series. Otherwise the PPD will be rejected due to inconsistency. This applies to all
542 kinds of net positions (zero, import, export).

543 DC flows as well as indicative AC flows of an optimisation area A towards another area B are
544 always provided through the use of two time series.

545 • One time series for import into the optimisation area A with in_Domain.mRID =
546 "mRID_A", out_Domain.mRID = "mRID_B".

547 • One time series for export from the optimisation area A with in_Domain.mRID
548 = "mRID_B", out_Domain.mRID = "mRID_A".

549 • These two time series shall have the same Period.resolution and the same
550 Period.timeInterval. For a given Point.position, the Point.quantity of one time series
551 must be zero, whereas the Point.quantity of the other time series may have a value
552 larger than zero (pair of netted values). Point.quantity of both timeseries must be zero
553 when there is no flow between the two areas for the given target time interval.

554 9. ReportingInformation_MarketDocument XML schema

555 The XSD file to be used with this implementation guide is urn:iec62325.351:tc57wg16:451-n:
556 reportinginformationdocument:2:1. Further details on the UML model and schema can be
557 found in [7].

558 **6 References**

- 559 [1] All TSO's Common Grid Model Alignment Methodology in accordance with Article 25 (3)(c)
560 of the Common Grid Model Methodology
- 561 [2] Acknowledgement_MarketDocument (EAD) IEC 62325-451-1
- 562 [3] ProblemStatement_MarketDocument (EPSD) IEC 62325-451-5
- 563 [4] StatusRequest_MarketDocument (ESR) IEC62325-451-5
- 564 [5] Reporting Document UML Model and Schema Version 1.0 (19th January 2017)
- 565 [6] PEVF Implementation Guide Version 01 / Release 00 (11th April 2018)
- 566 [7] Reporting Information Document UML Model and Schema Version 1.0 (19th January 2017)